



SUPERIOR
Hays,
Kansas

COMPENSATED
DENSITY / NEUTRON
PE LOG

Company LOTUS OPERATING CO. LLC.
Well #4 SUZIE
Field STRANATHAN
County BARBER
State KANSAS

Company LOTUS OPERATING COMPANY, LLC.
Well #4 SUZIE
Field STRANATHAN
County BARBER State KANSAS

Location: API # : 15-007-23591-0000
495' FSL & 495' FWL
SEC 30 TWP 34S RGE 11W
Permanent Datum GROUND LEVEL Elevation 1392
Log Measured From KELLY BUSHING 8' A.G.L.
Drilling Measured From KELLY BUSHING
Other Services
DIL/MEL
SONIIC
Elevation
K.B. 1400
D.F. 1398
G.L. 1392

Date	10/7/10
Run Number	ONE
Depth Driller	5290
Depth Logger	5290
Bottom Logged Interval	5266
Top Log Interval	3600
Casing Driller	10 3/4" @ 275'
Casing Logger	276
Bit Size	7 7/8"
Type Fluid in Hole	CHEMICAL MUD
Density / Viscosity	9.3/48
pH / Fluid Loss	10.0/9.6
Source of Sample	FLOWLINE
Rim @ Meas. Temp	1.00 @ 86F
Rmf @ Meas. Temp	.750 @ 86F
Rmc @ Meas. Temp	1.20 @ 86F
Source of Rmf / Rmc	MEASUREMENT
Rim @ BHT	.672 @ 128F
Time Circulation Stopped	3 HOURS
Time Logger on Bottom	7:30 P.M.
Maximum Recorded Temperature	128F
Equipment Number	0836
Location	HAYS, KANSAS
Recorded By	JEFF LUEBBERS
Witnessed By	TIM HELLMAN

<<< Fold Here >>>

All interpretations are opinions based on inferences from electrical or other measurements and we cannot and do not guarantee the accuracy or correctness of any interpretation, and we shall not, except in the case of gross or willful negligence on our part, be liable or responsible for any loss, costs, damages, or expenses incurred or sustained by anyone resulting from any interpretation made by any of our officers, agents or employees. These interpretations are also subject to our general terms and conditions set out in our current Price Schedule.

Comments

THANK YOU FOR USING SUPERIOR WELL SERVICE HAYS, KANSAS (785) 628-6395
DIRECTIONS
MEDICINE LODGE, KS. (HWY 281 & 160 JUNCTION) 16S. TO "MM #8" (RATTLESNAKE TRAIL RD.) 1/8E.,
N. INTO

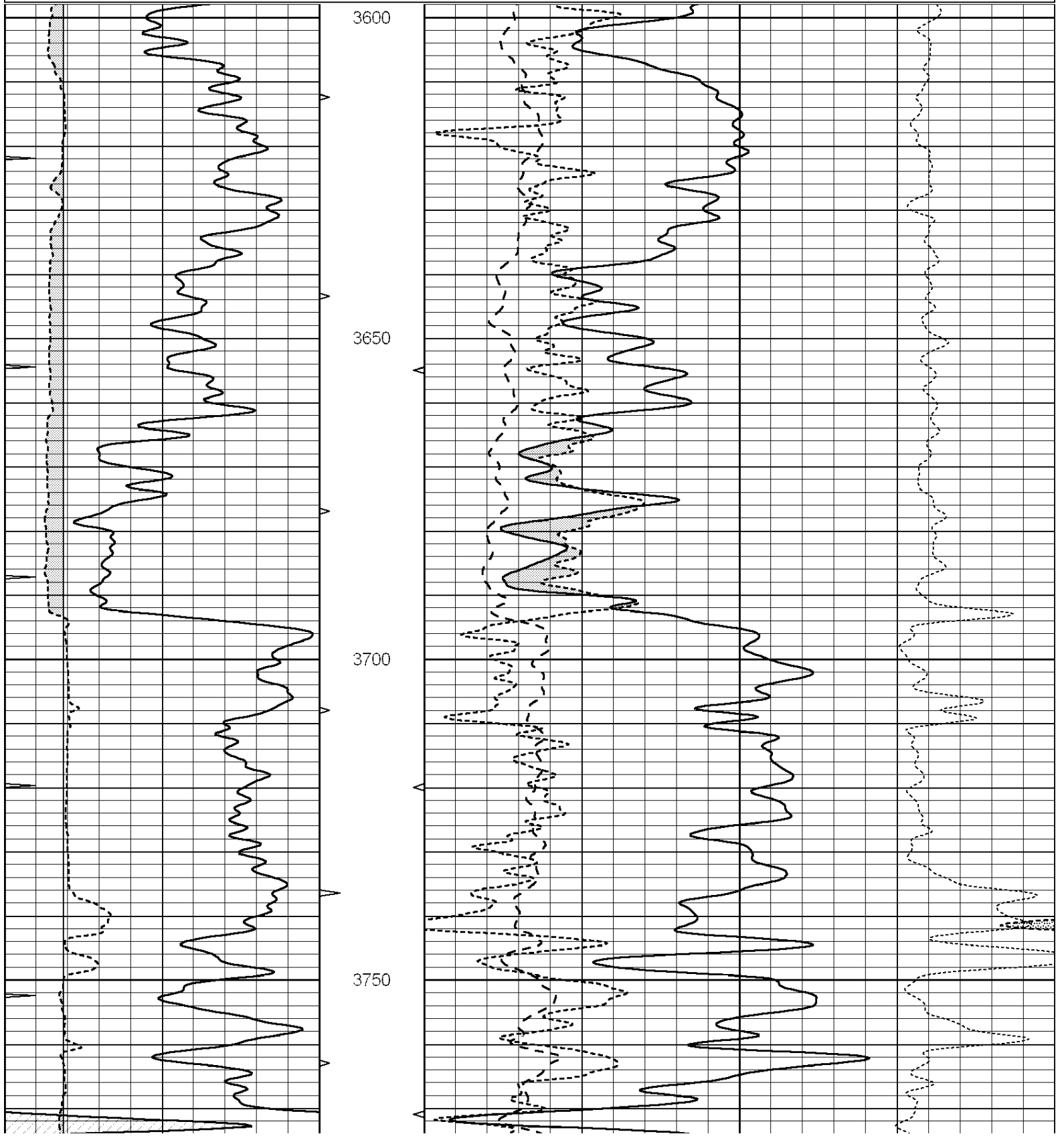


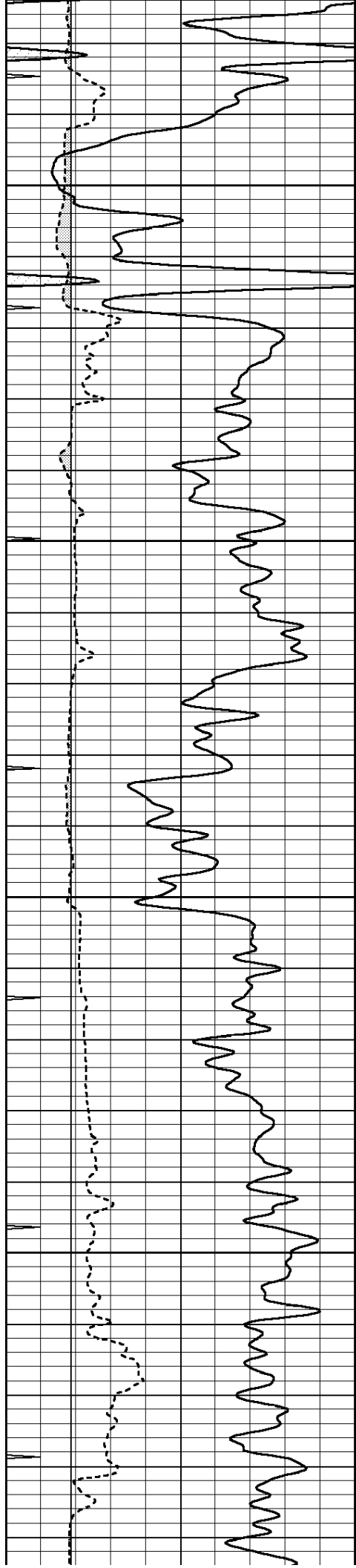
SUPERIOR
Hays,
Kansas

MAIN SECTION

Database File: 005990pe.db
 Dataset Pathname: pass3.2
 Presentation Format: ldt_neu
 Dataset Creation: Thu Oct 07 21:14:56 2010
 Charted by: Depth in Feet scaled 1:240

0	GAMMA RAY (GAPI)	150	ABHV	30	COMPENSATED DENSITY (pu)	-10			
6	CALIPER (in)	16	10 (ft3)	0	30	COMPENSATED NEUTRON (pu)	-10		
0	MINMK	10	TBHV	0	PE	10	-0.25	CORRECTION (g/cc)	0.25
			0 (ft3)	10					



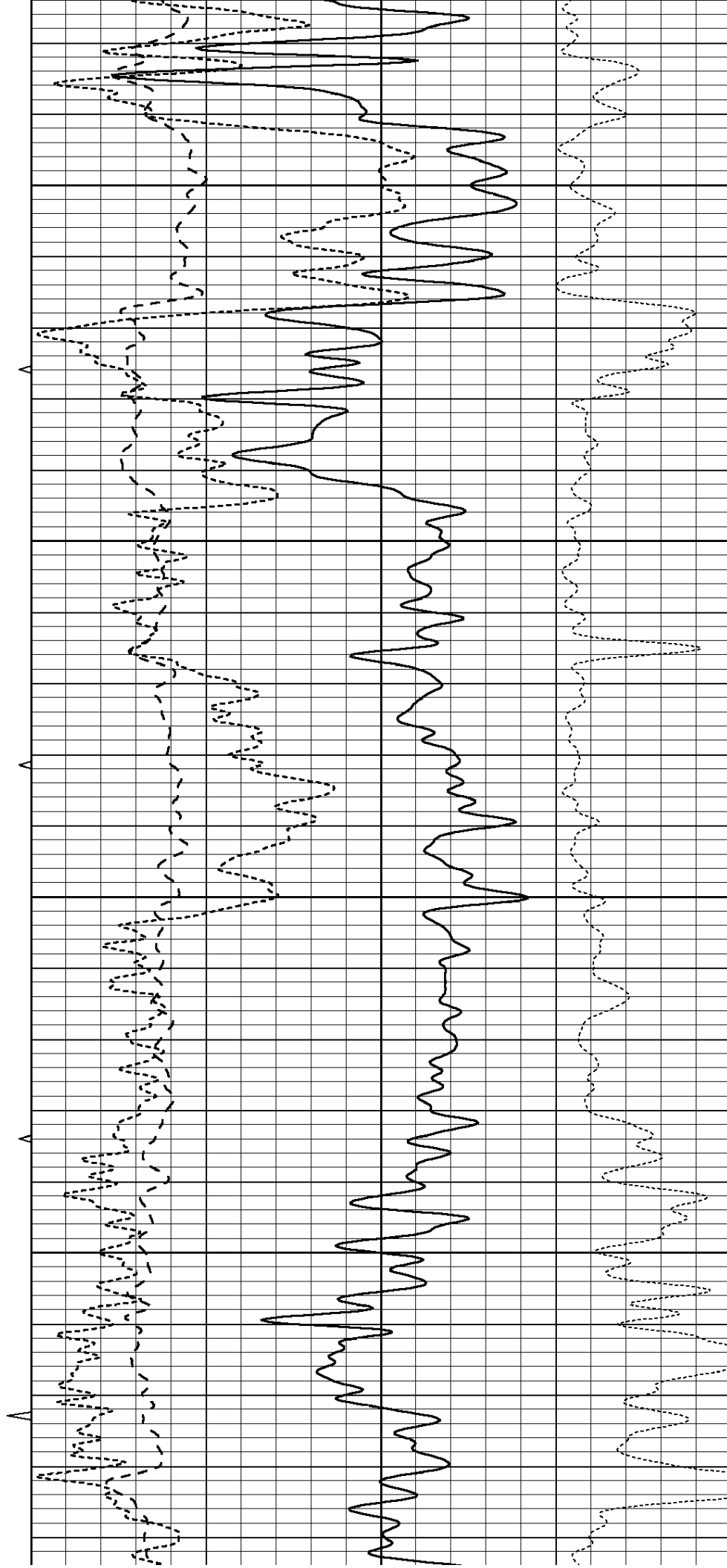


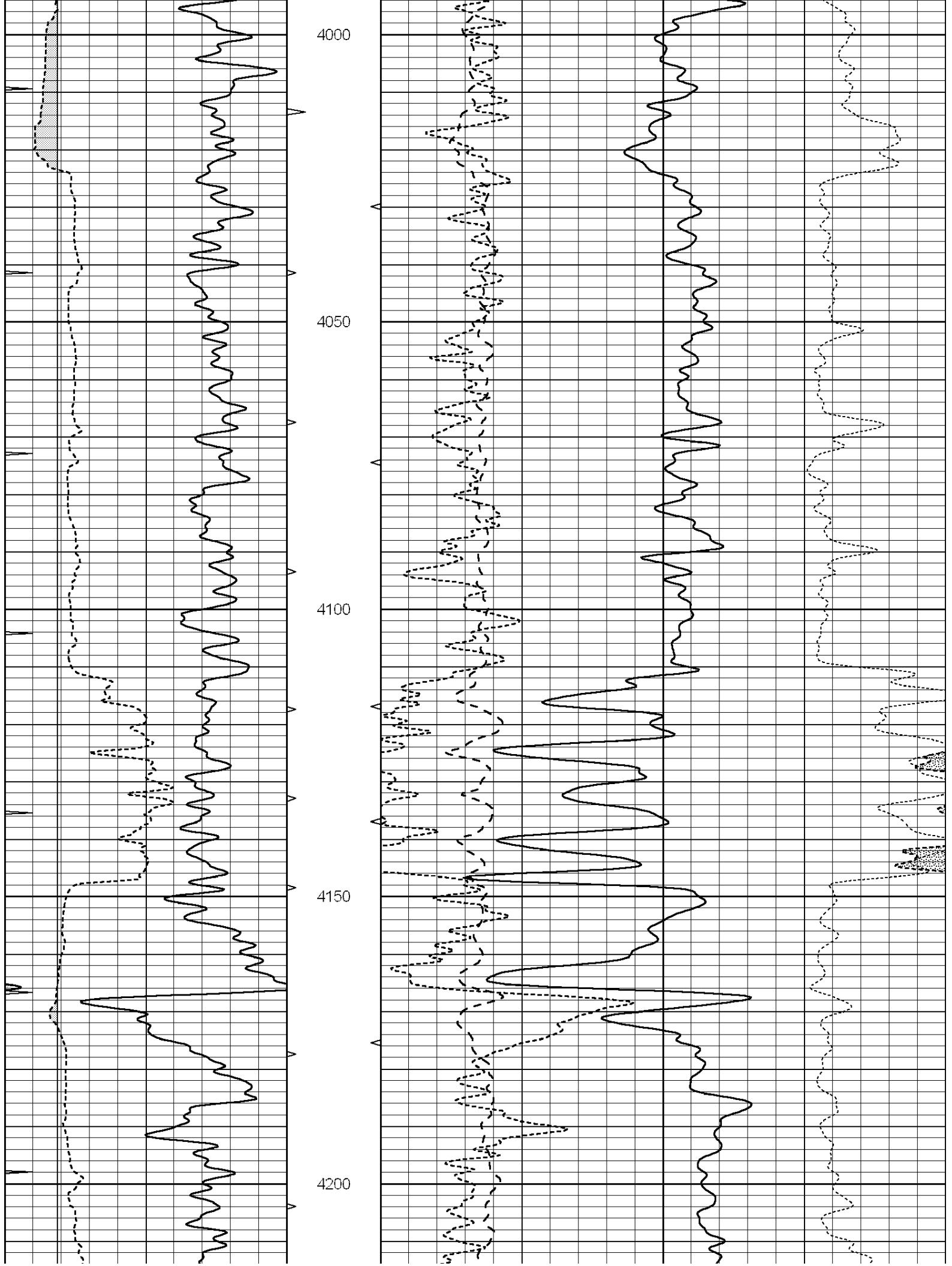
3800

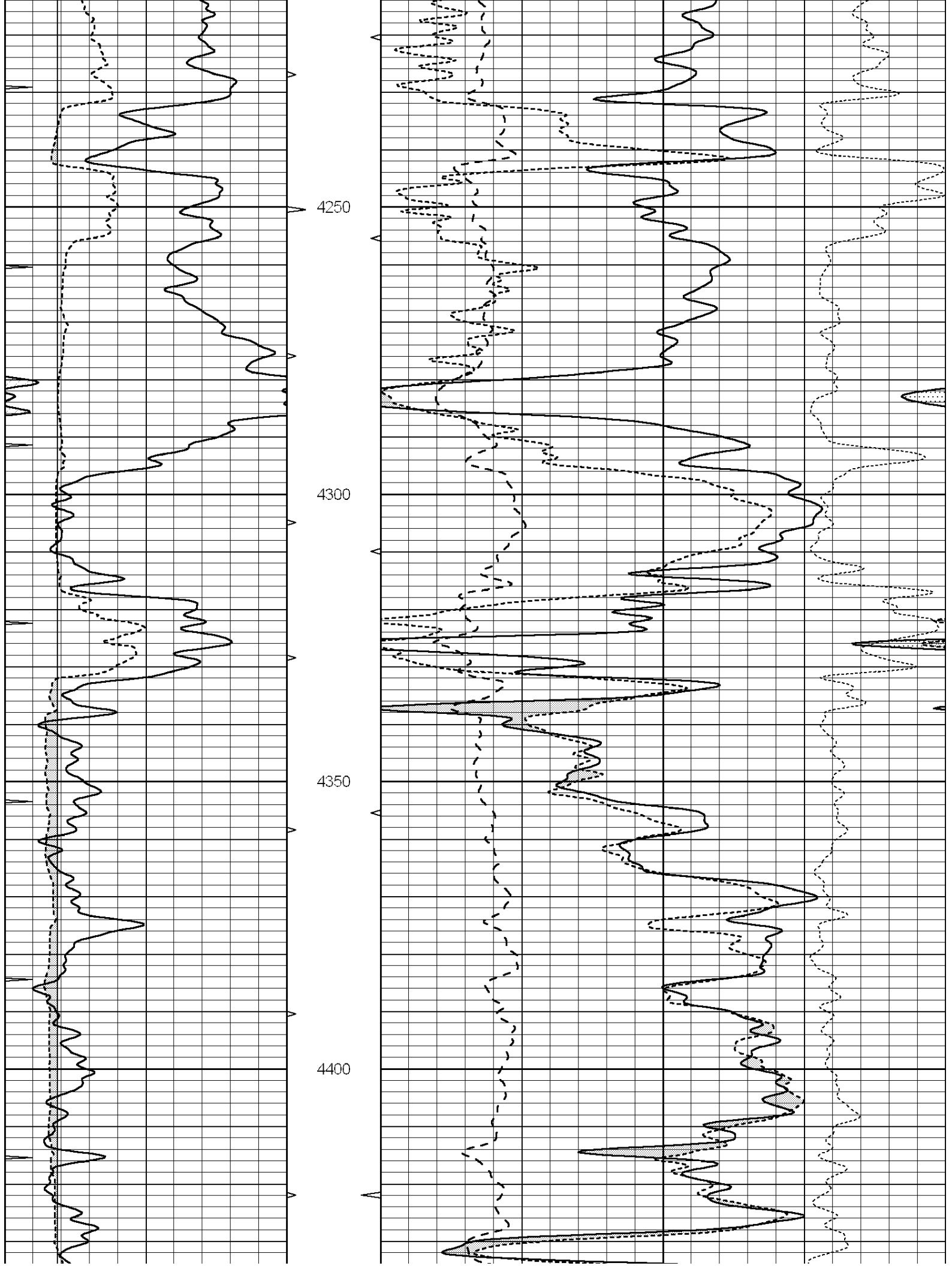
3850

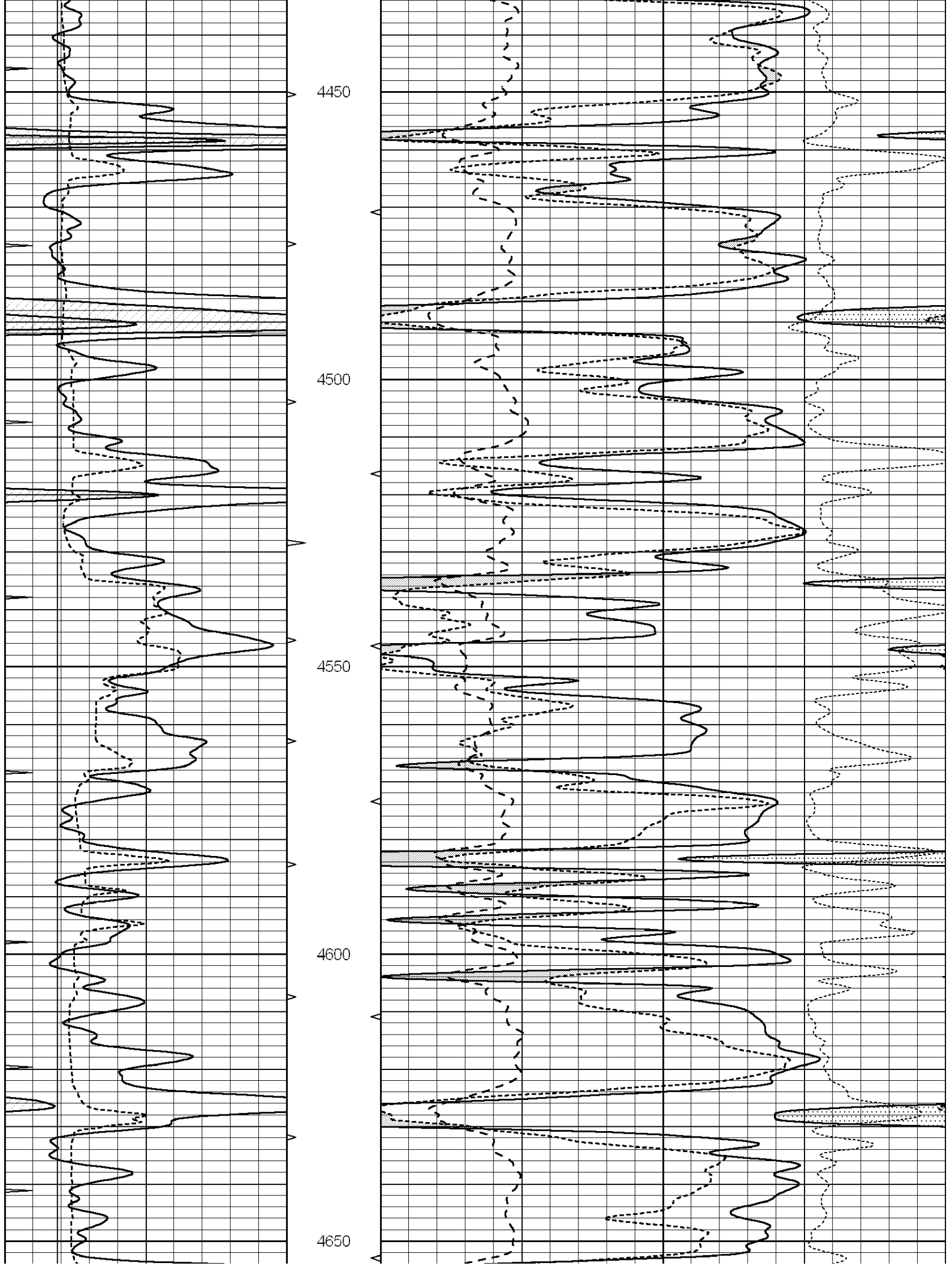
3900

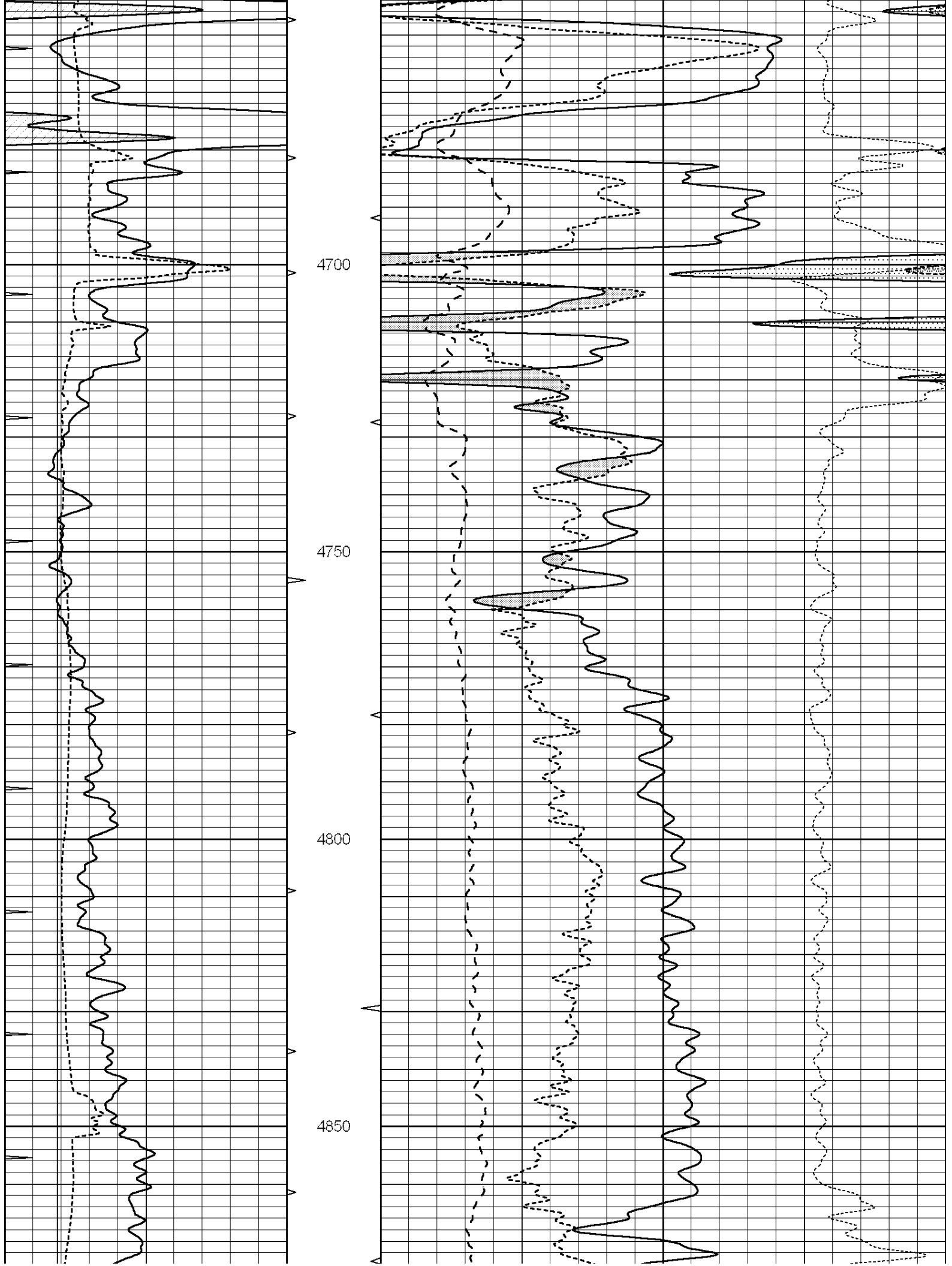
3950

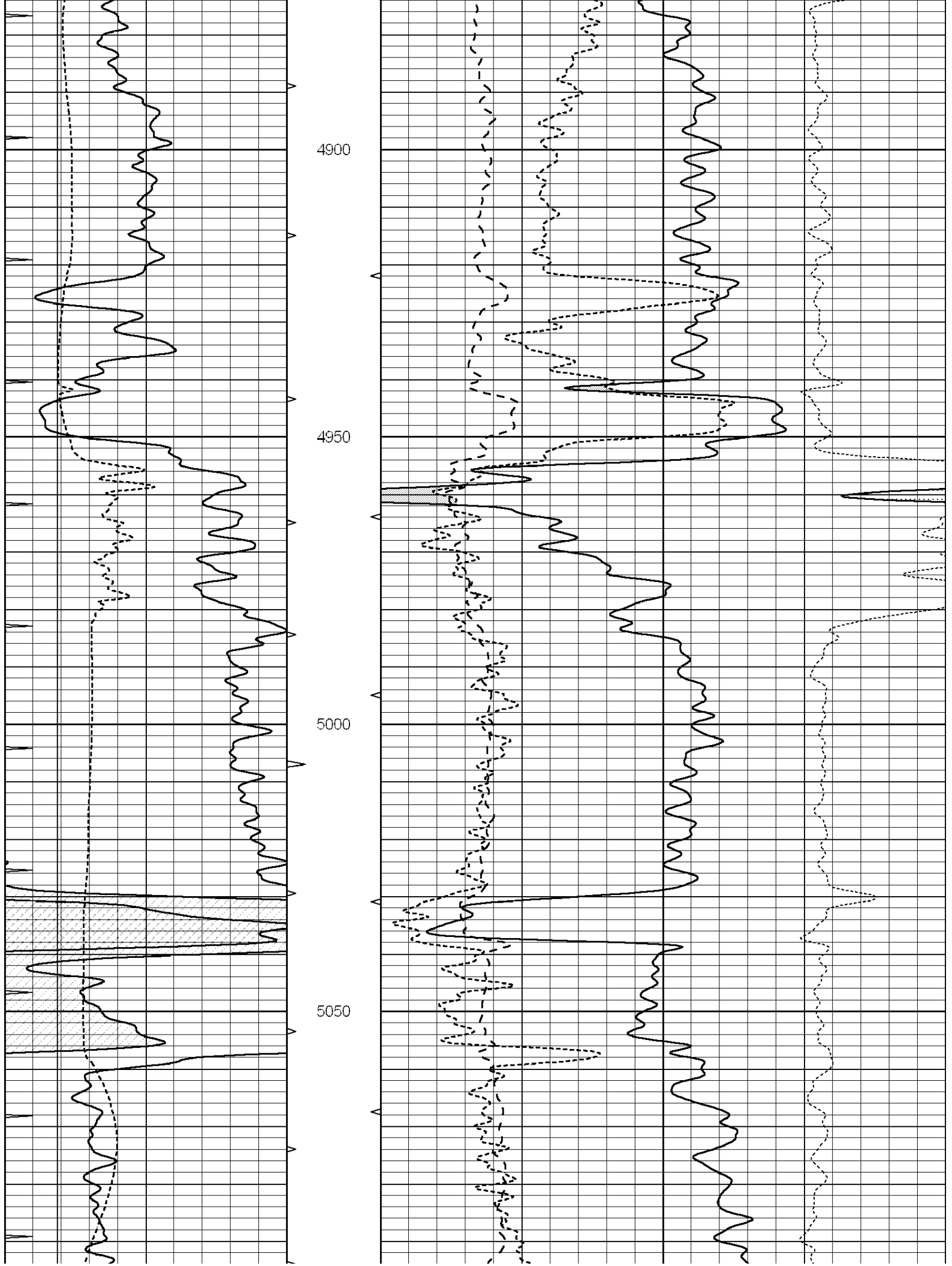


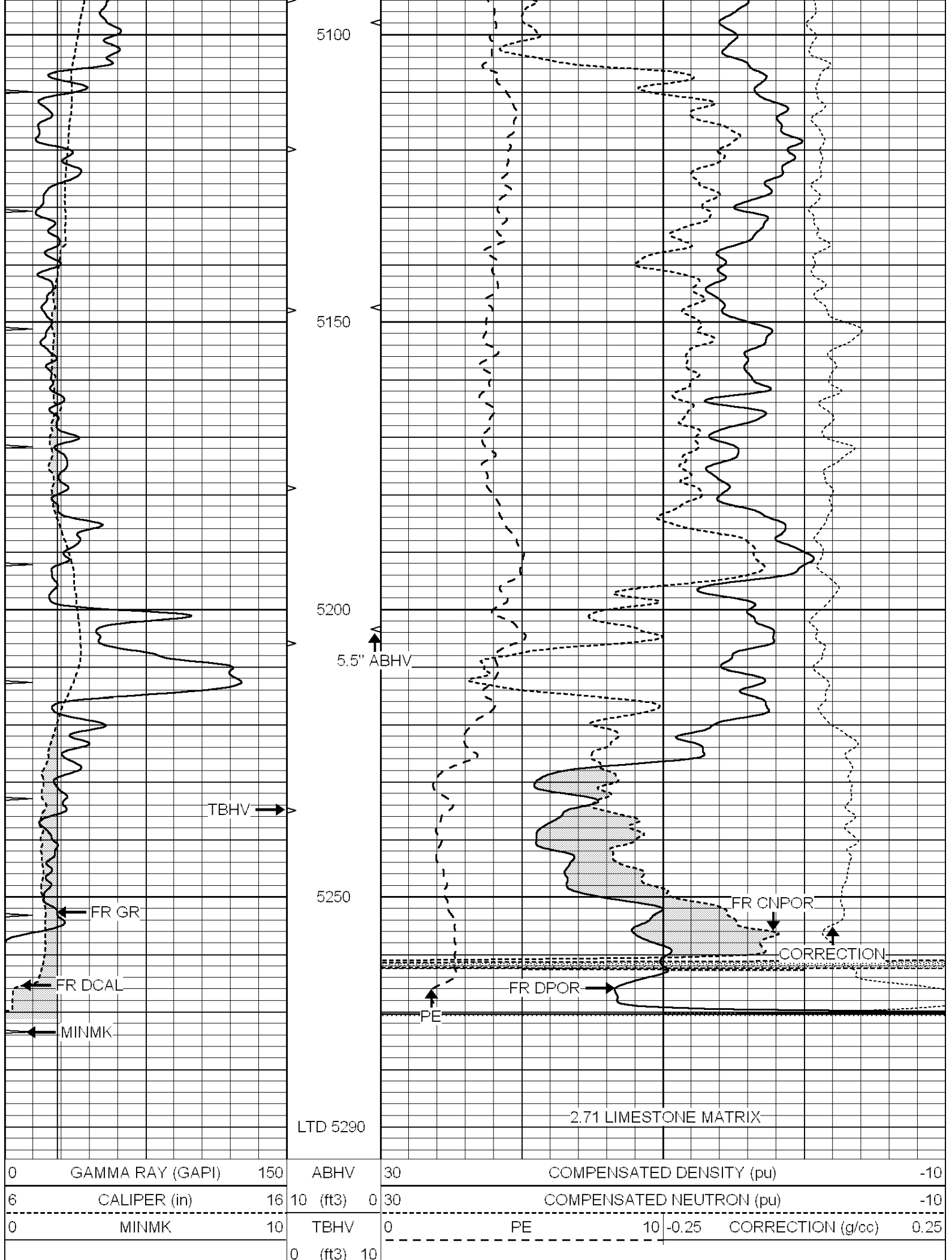












0	GAMMA RAY (GAPI)	150	ABHV	30	COMPENSATED DENSITY (pu)	-10
6	CALIPER (in)	16	10 (ft3)	0 30	COMPENSATED NEUTRON (pu)	-10
0	MINMK	10	TBHV	0	PE	10 -0.25
			0 (ft3)	10		CORRECTION (g/cc) 0.25

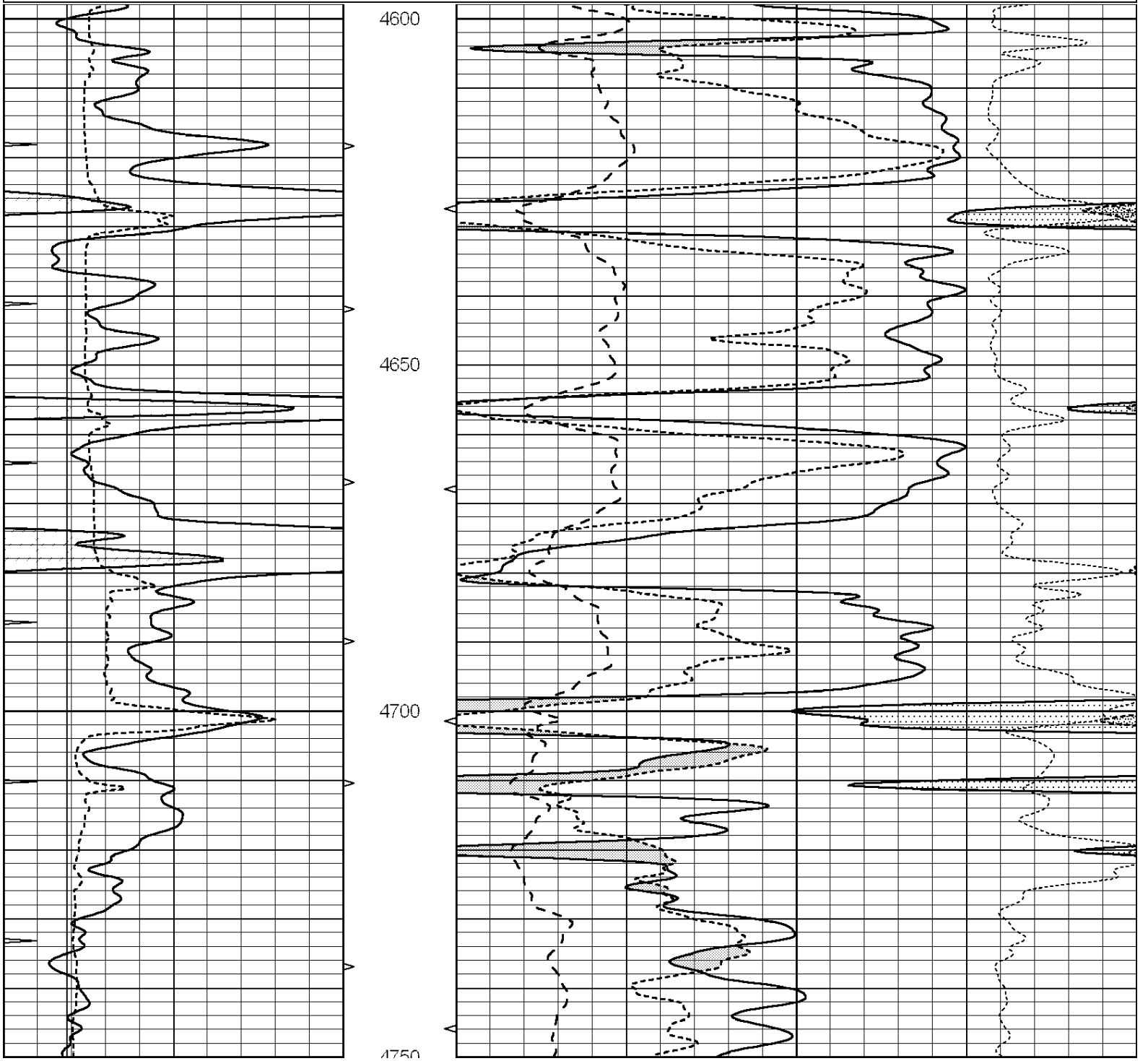


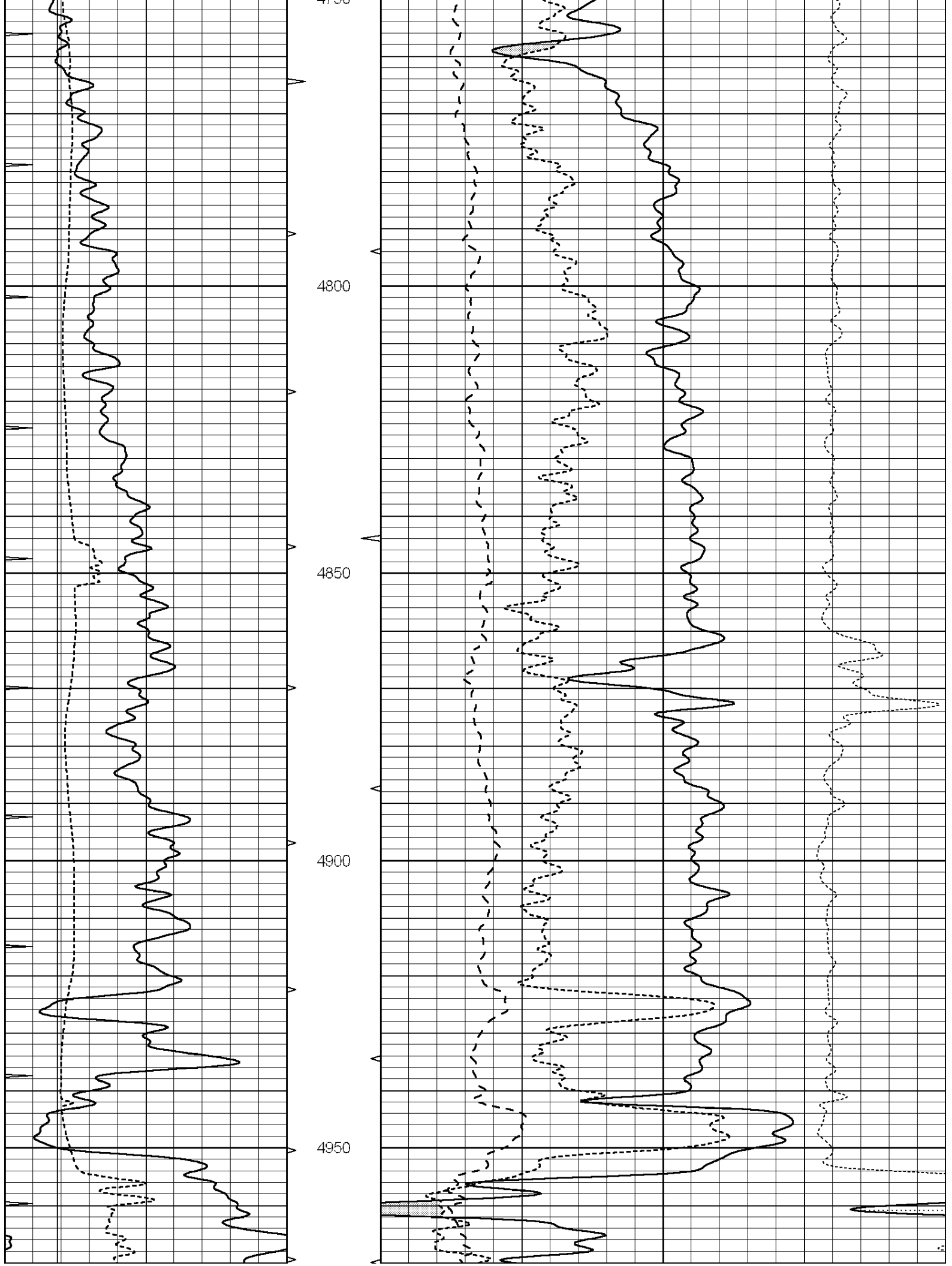
SUPERIOR
Hays,
Kansas

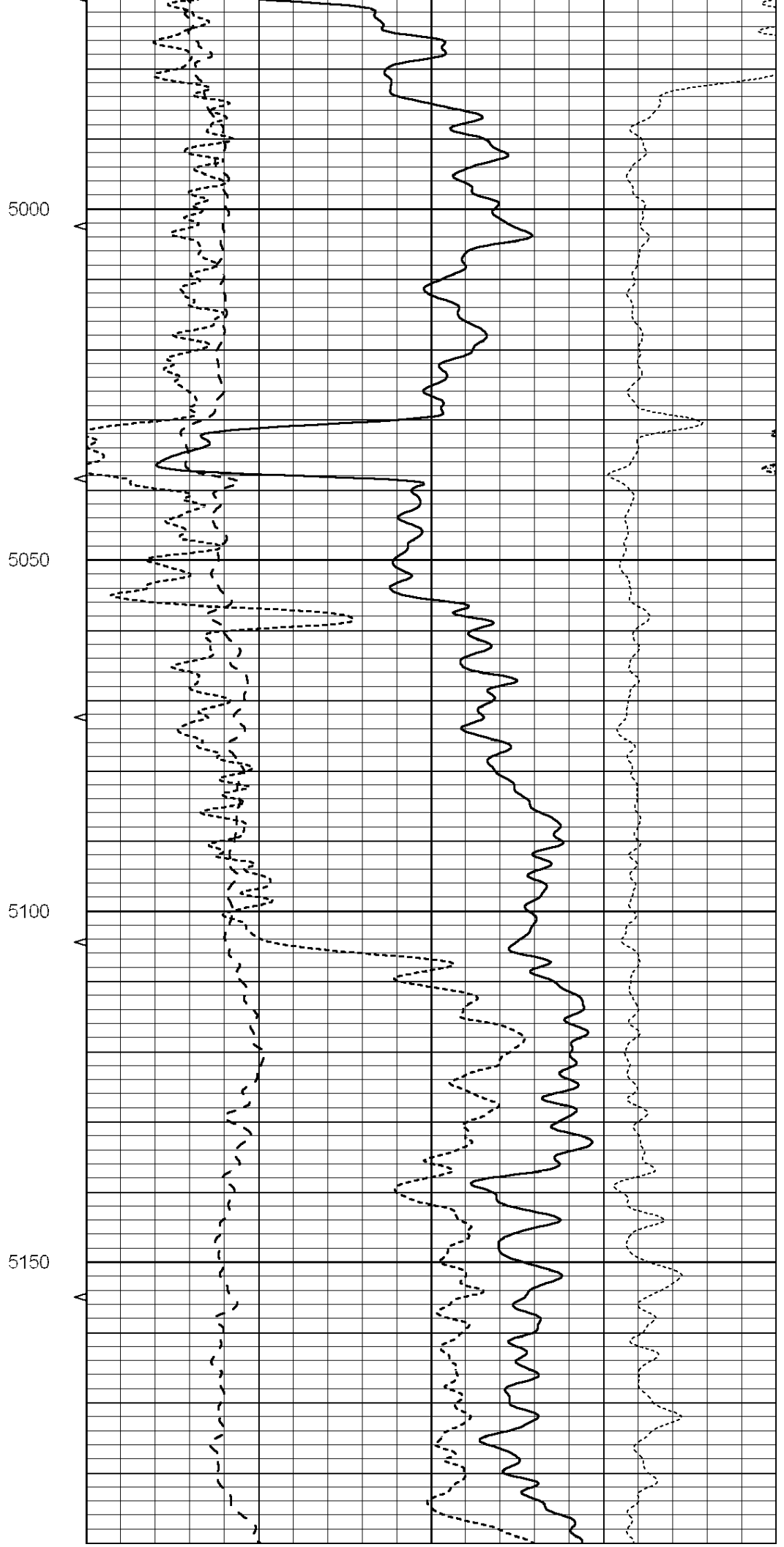
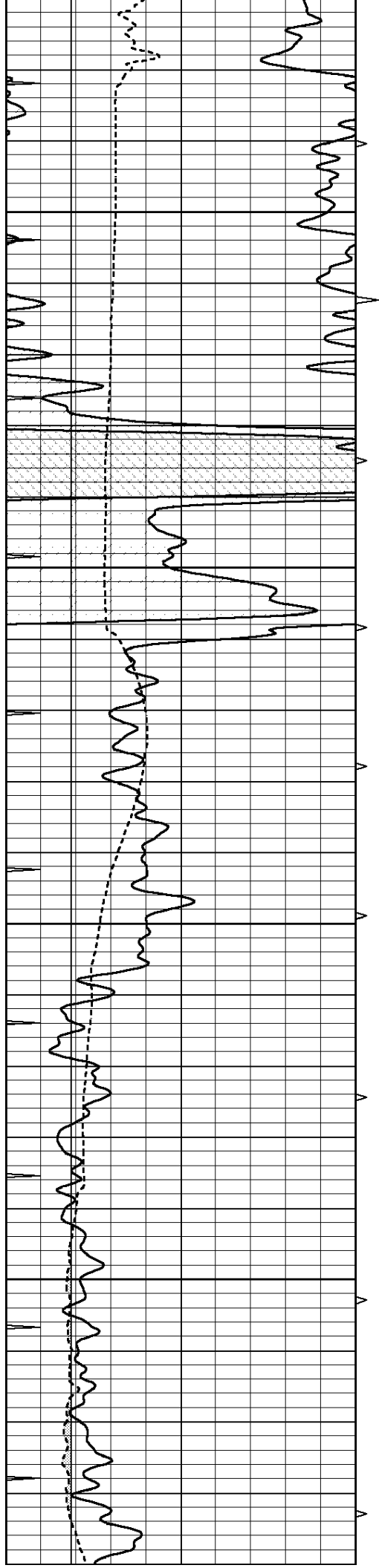
REPEAT SECTION

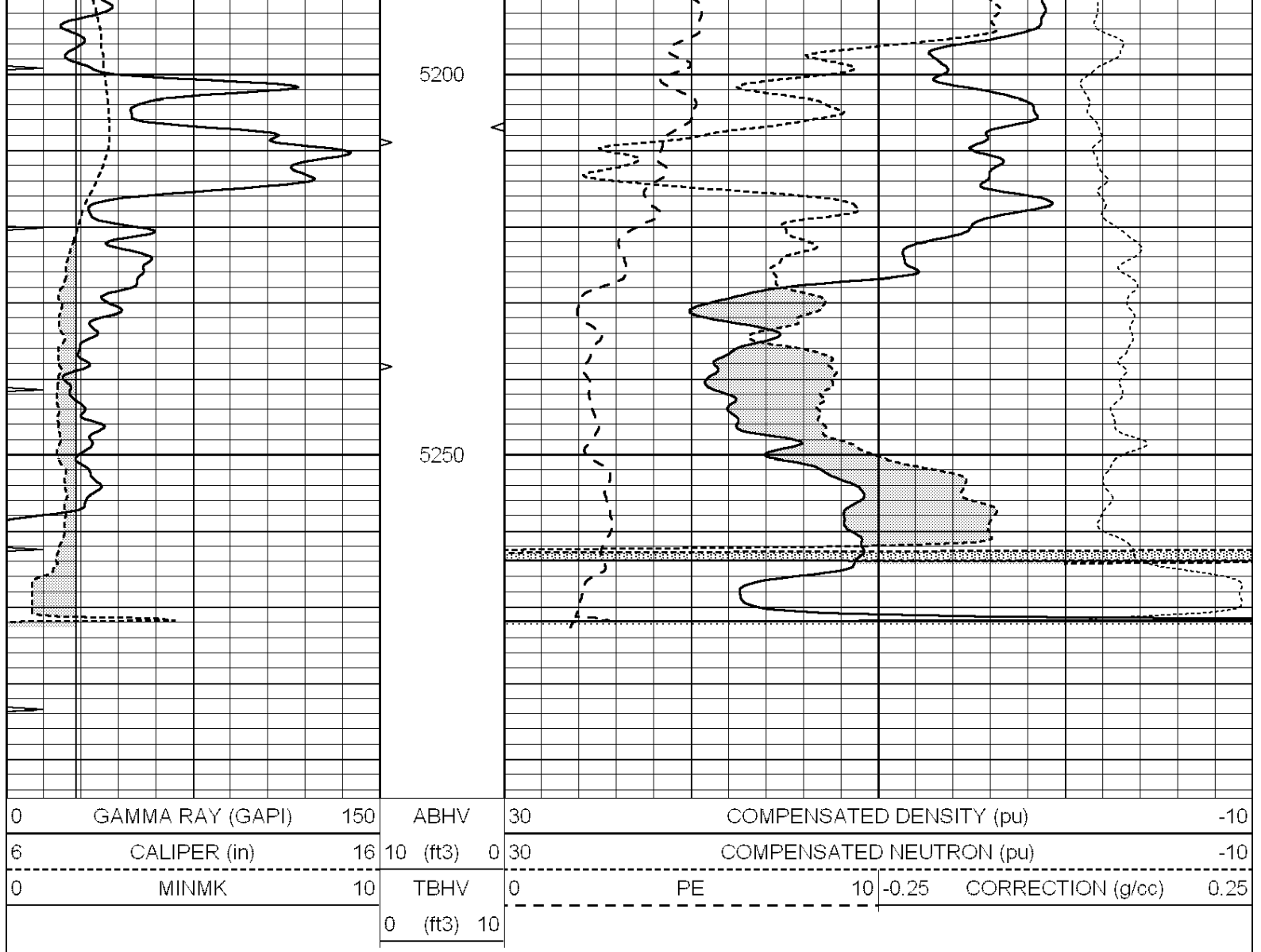
Database File: 005990pe.db
 Dataset Pathname: pass2.4
 Presentation Format: ldt_neu
 Dataset Creation: Thu Oct 07 20:48:12 2010 by Calc Open-Cased 090629
 Charted by: Depth in Feet scaled 1:240

0	GAMMA RAY (GAPI)	150	ABHV	30	COMPENSATED DENSITY (pu)	-10			
6	CALIPER (in)	16	10 (ft3)	0	30	COMPENSATED NEUTRON (pu)	-10		
0	MINMK	10	TBHV	0	PE	10	-0.25	CORRECTION (g/cc)	0.25
			0 (ft3)	10					









Calibration Report

Database File: 005990pe.db
 Dataset Pathname: pass3.2
 Dataset Creation: Thu Oct 07 21:14:56 2010

Dual Induction Calibration Report

Serial-Model: DIL3-GEAR
 Performed: Thu Oct 07 17:54:37 2010

Loop:	Readings				References		Results	
	Air	Loop			Air	Loop	m	b
Deep	0.011	0.656	V	0.000	400.000	mmho/m	640.000	0.000
Medium	0.013	0.740	V	0.000	462.500	mmho/m	700.000	-14.000
Internal:	Zero	Cal		Zero	Cal		m	b
Deep	0.002	0.645	V	0.000	400.000	mmho/m	622.059	-1.071
Medium	0.007	0.740	V	0.000	462.500	mmho/m	631.393	-4.555

Litho Density Calibration Report
 Serial: 006 Model: PRB
 Performed Sun Aug 15 09:48:41 2010

	Background	Magnesium	Aluminum	Sandstone	
Window 1	1686.6	11612.8	3932.0	12718.8	cps
Window 2	1531.4	9204.7	3267.8	9851.9	cps
Window 3	1198.3	4733.6	1952.5	4920.6	cps
Window 4	317.3	321.2	325.9	303.6	cps
Long Space	0.0	7673.3	1736.4	8320.4	cps
Short Space	1.7	2548.5	1657.2	2628.8	cps
Rho		1.7100	2.5900	1.3800	g/cc
Pe			2.5700	1.5500	
Rib Angle	: 43.8	Rib Slope	: 0.961	Density/Spine Ratio	: 0.569
Spine Angle	: 73.8	Spine Slope	: 3.453	Spine Intercept	: -18.1

Caliper	Readings	Reference	
Low Ref	3.2	6.5	
High Ref	6.2	14.0	
	Gain: 2.4		Offset: -1.3

Compensated Neutron Calibration Report

Serial Number:	NEU_3I
Tool Model:	G

CALIBRATION						
Detector	Readings		Target		Normalization	
Short Space	997.00	cps	1000.00	cps	1.0000	
Long Space	986.00	cps	1000.00	cps	1.0000	

Gamma Ray Calibration Report

Serial Number:	GR4
Tool Model:	OPEN
Performed:	Thu Oct 07 19:58:59 2010
Calibrator Value:	200.0 GAPI
Background Reading:	0.0 cps
Calibrator Reading:	189.0 cps
Sensitivity:	0.7000 GAPI/cps