



SUPERIOR
Hays,
Kansas

SONIC
LOG

Company	LOTUS OPERATING CO. LLC.	
Well	#4 SUZIE	
Field	STRANATHAN	
County	BARBER	State KANSAS
Company	LOTUS OPERATING COMPANY, LLC.	
Well	#4 SUZIE	
Field	STRANATHAN	
County	BARBER	State KANSAS
Location:	API # : 15-007-23591-0000	Other Services CDL/CNL/PE DIL/MEL
	495' FSL & 495' FWL	Elevation
	SEC 30 TWP 34S RGE 11W	K.B. 1400
Permanent Datum	GROUND LEVEL	Elevation 1392
Log Measured From	KELLY BUSHING 8' A.G.L.	D.F. 1398
Drilling Measured From	KELLY BUSHING	G.L. 1392

Date	10/7/10
Run Number	TWO
Depth Driller	5290
Depth Logger	5290
Bottom Logged Interval	5277
Top Log Interval	3600
Casing Driller	10 3/4" @ 275'
Casing Logger	276
Bit Size	7 7/8"
Type Fluid in Hole	CHEMICAL MUD
Density / Viscosity	9.3/48
pH / Fluid Loss	10.0/9.6
Source of Sample	FLOWLINE
Rim @ Meas. Temp	1.00 @ 86F
Rmf @ Meas. Temp	.750 @ 86F
Rmc @ Meas. Temp	1.20 @ 86F
Source of Rmf / Rmc	MEASUREMENT
Rim @ BHT	.672 @ 128F
Time Circulation Stopped	5.5 HOURS
Time Logger on Bottom	7:30 P.M.
Maximum Recorded Temperature	128F
Equipment Number	0836
Location	HAYS, KANSAS
Recorded By	JEFF LUEBBERS
Witnessed By	TIM HELLMAN

<<< Fold Here >>>

All interpretations are opinions based on inferences from electrical or other measurements and we cannot and do not guarantee the accuracy or correctness of any interpretation, and we shall not, except in the case of gross or willful negligence on our part, be liable or responsible for any loss, costs, damages, or expenses incurred or sustained by anyone resulting from any interpretation made by any of our officers, agents or employees. These interpretations are also subject to our general terms and conditions set out in our current Price Schedule.

Comments

THANK YOU FOR USING SUPERIOR WELL SERVICE HAYS, KANSAS (785) 628-6395
 DIRECTIONS
 MEDICINE LODGE, KS. (HWY 281 & 160 JUNCTION) 16S. TO "MM #8" (RATTLESNAKE TRAIL RD.) 1/8E.,
 N. INTO

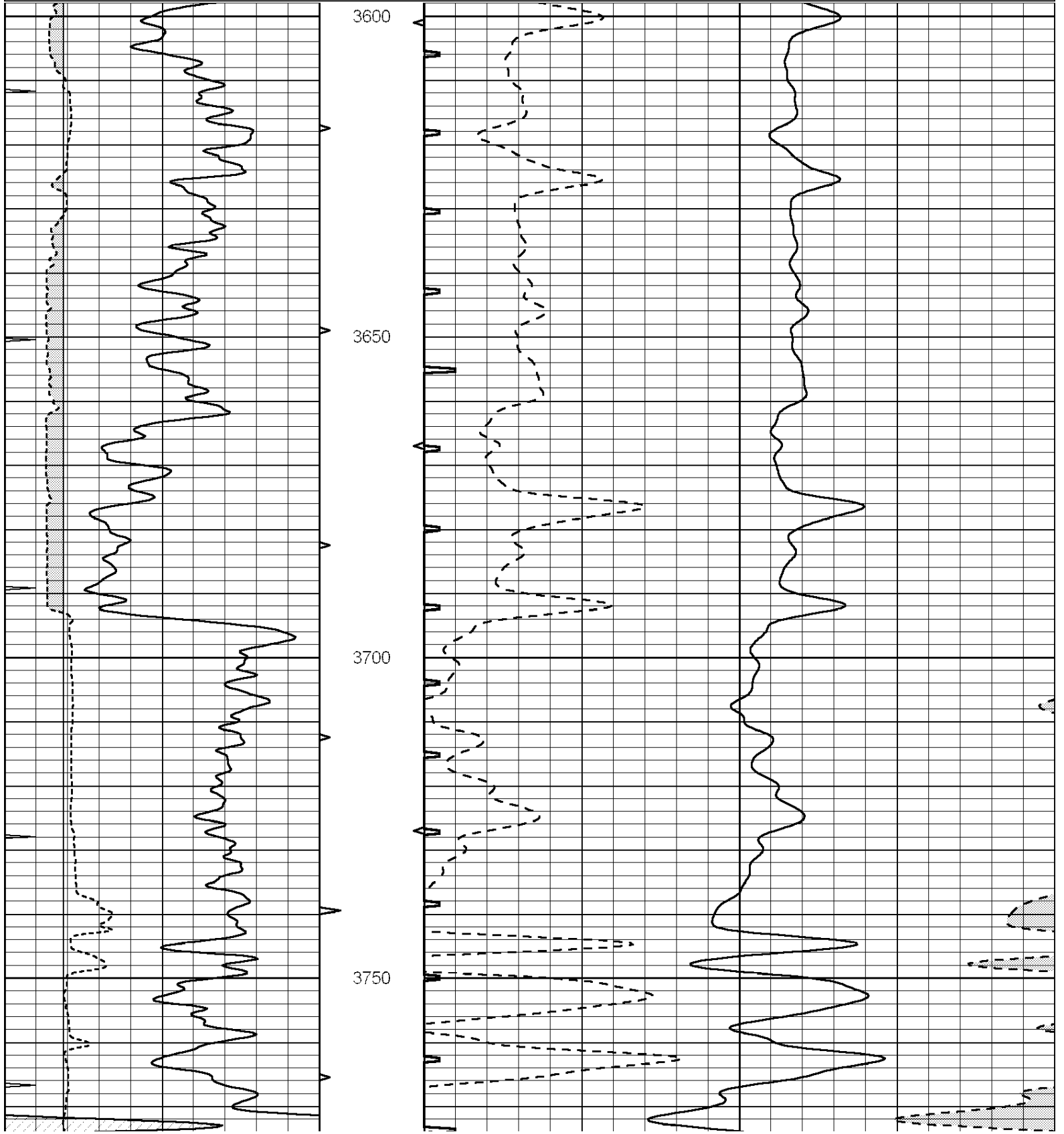


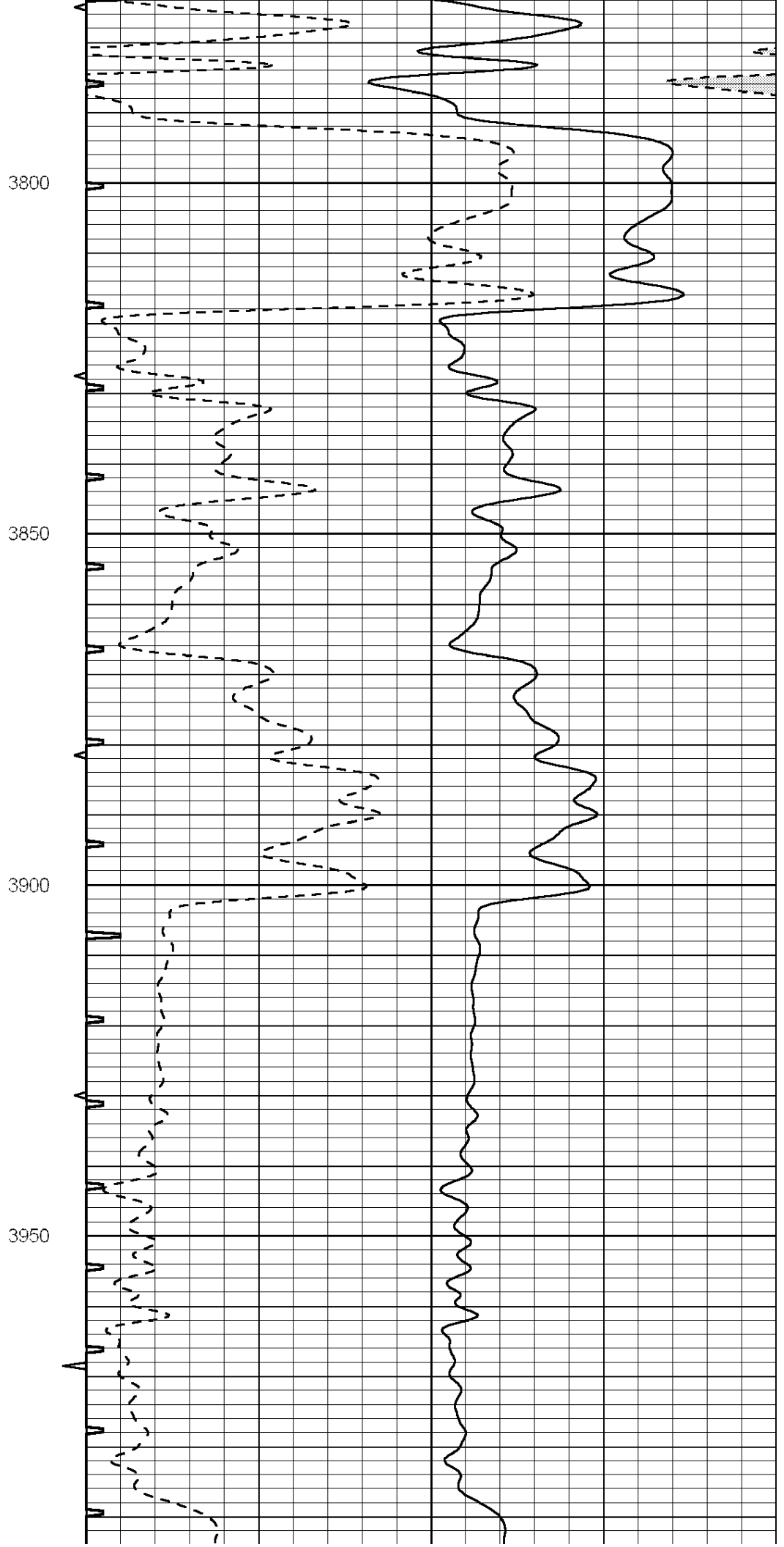
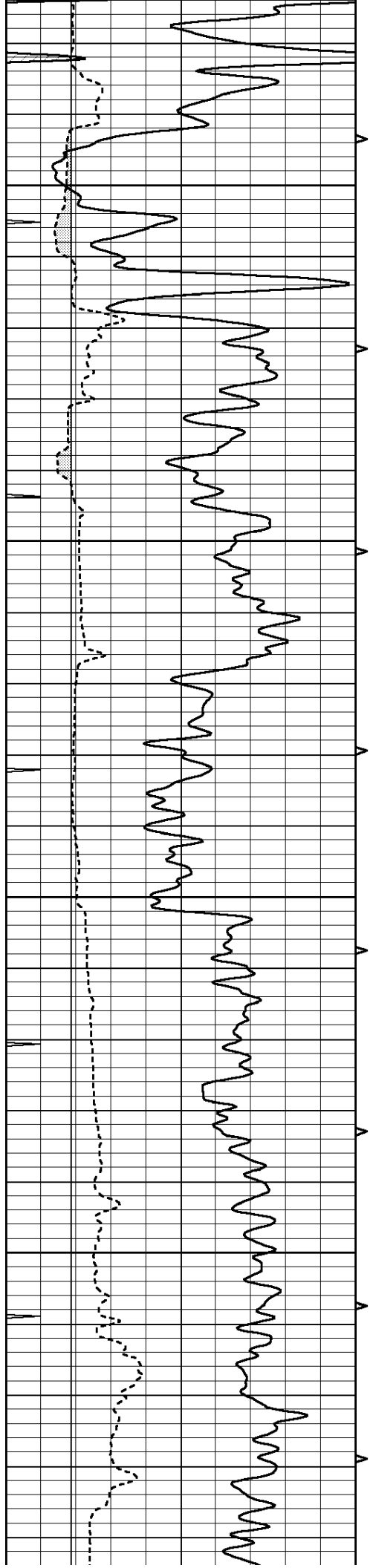
SUPERIOR
Hays,
Kansas

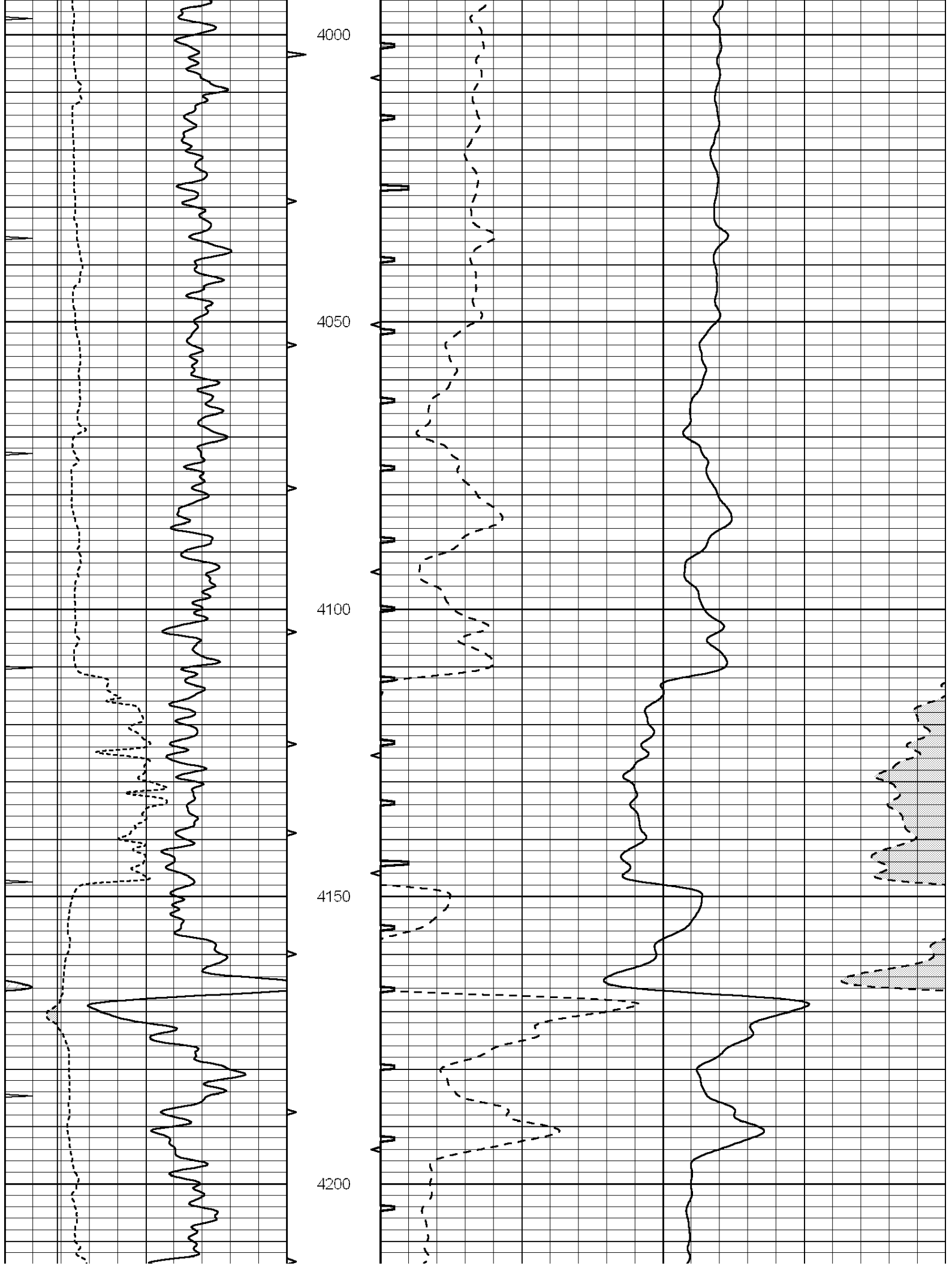
MAIN SECTION

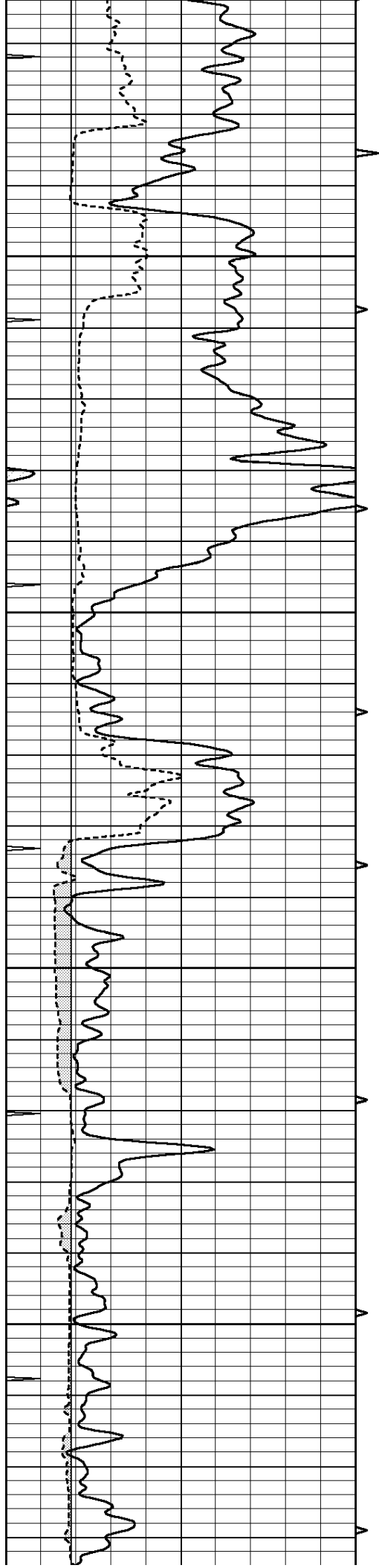
Database File: 005990pe.db
 Dataset Pathname: pass6.5
 Presentation Format: slt
 Dataset Creation: Thu Oct 07 23:46:27 2010
 Charted by: Depth in Feet scaled 1:240

0	GAMMA RAY (GAPI)	150	ABHV	140	DELTA TIME (usec/ft)	40
6	CALIPER (in)	16	10 (ft3)	0	30	SONIC POROSITY (pu)
0	MINMK	10	TBHV	0	ITT (msec)	20
			0 (ft3)	10		







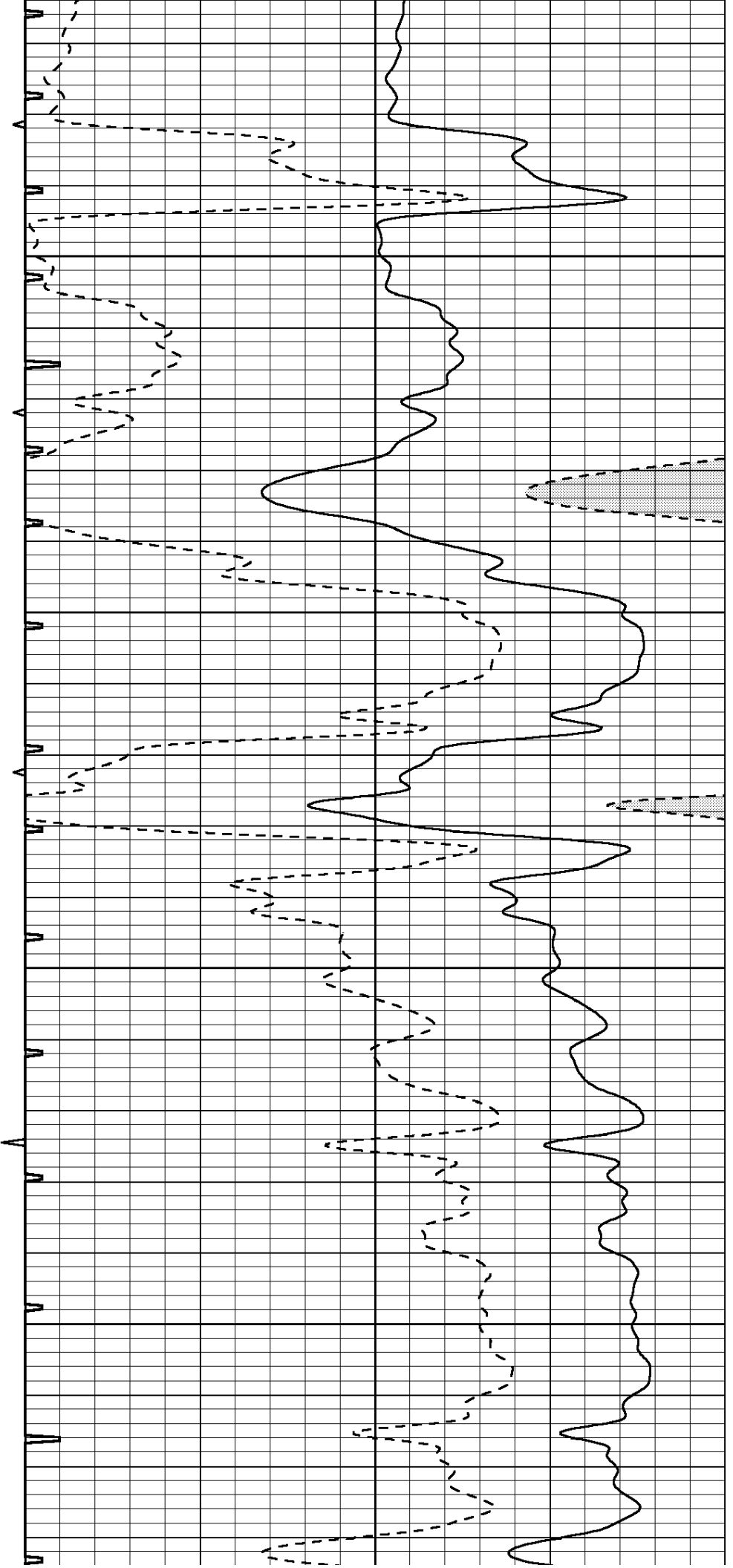


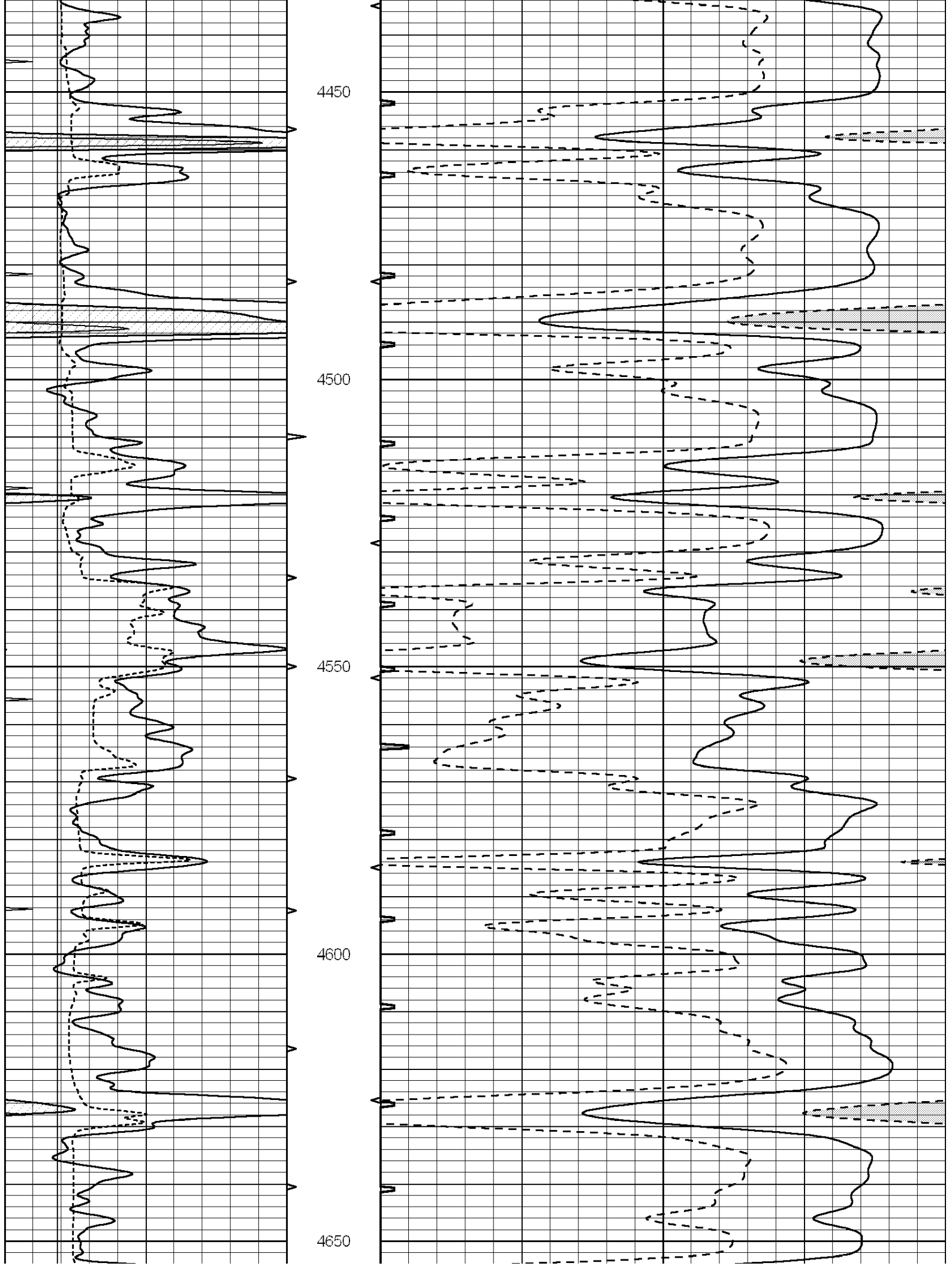
4250

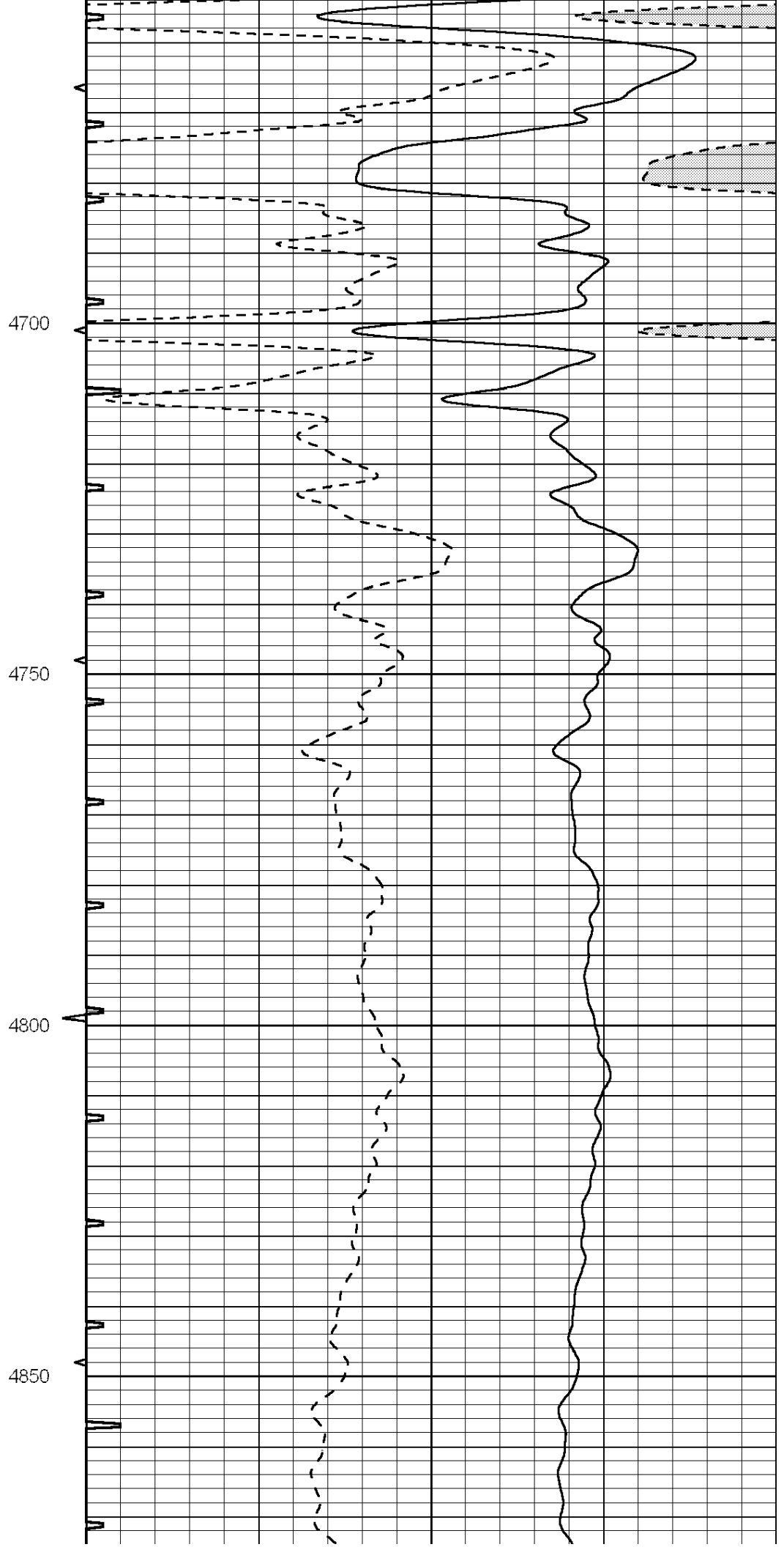
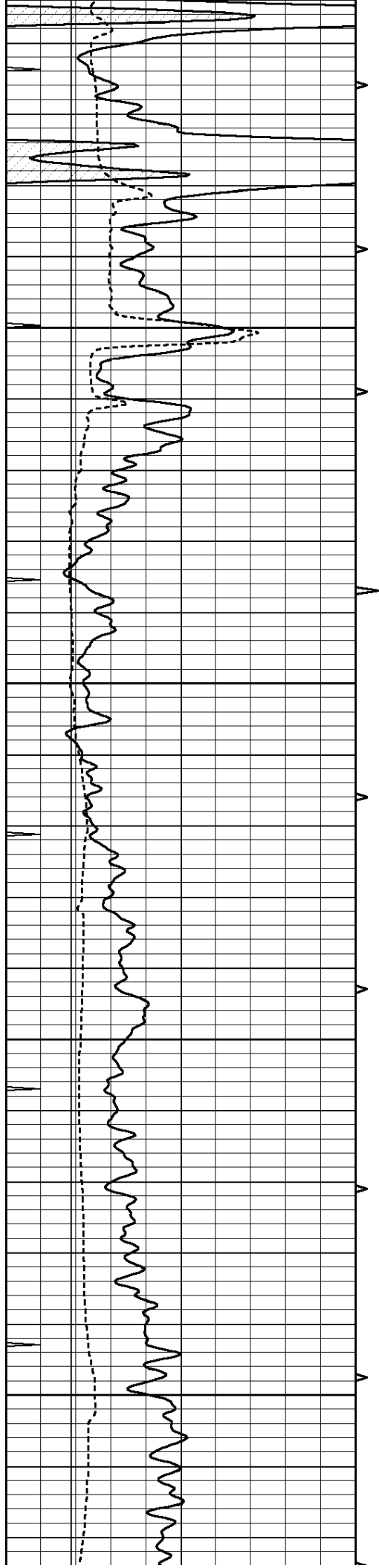
4300

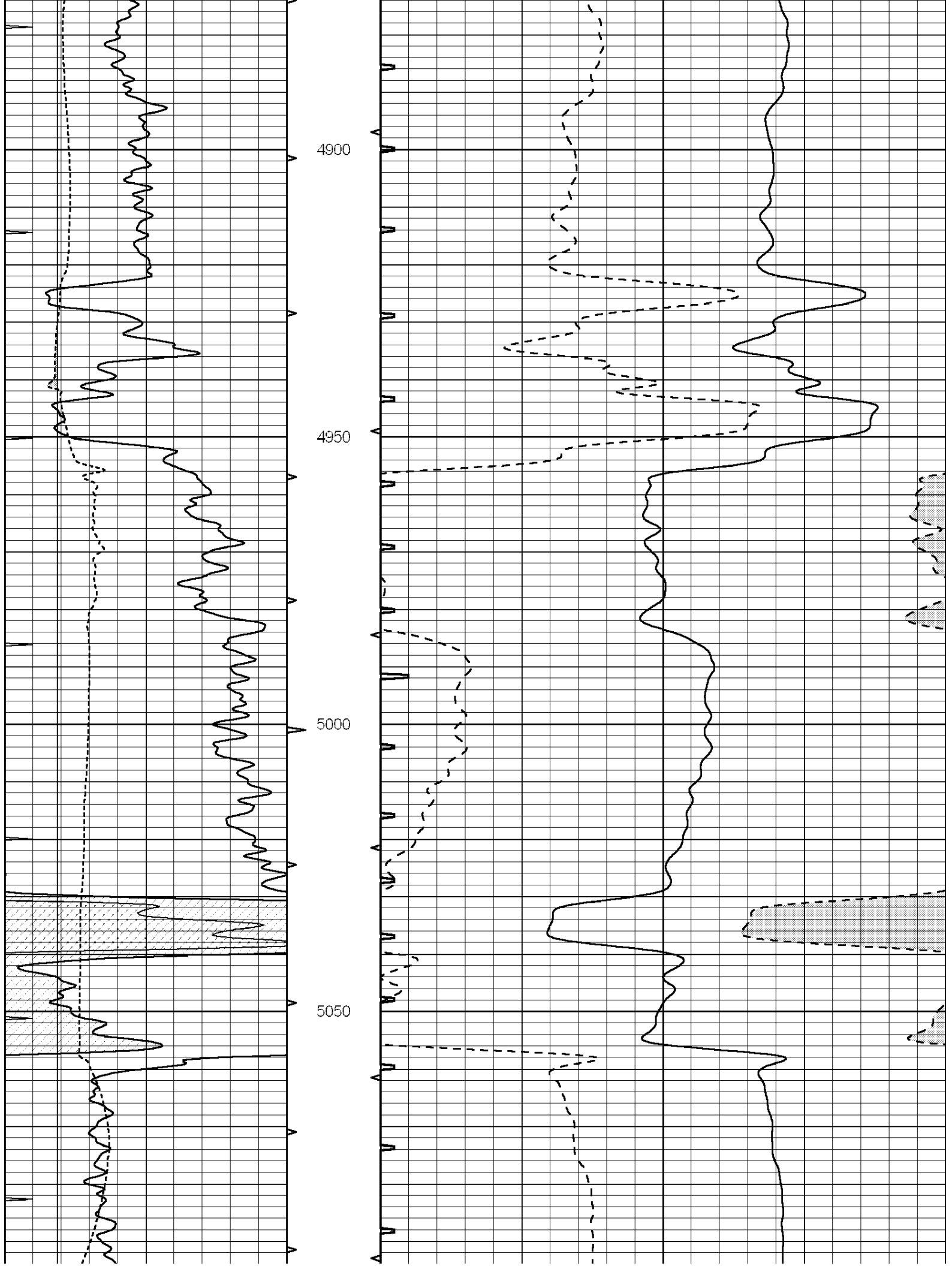
4350

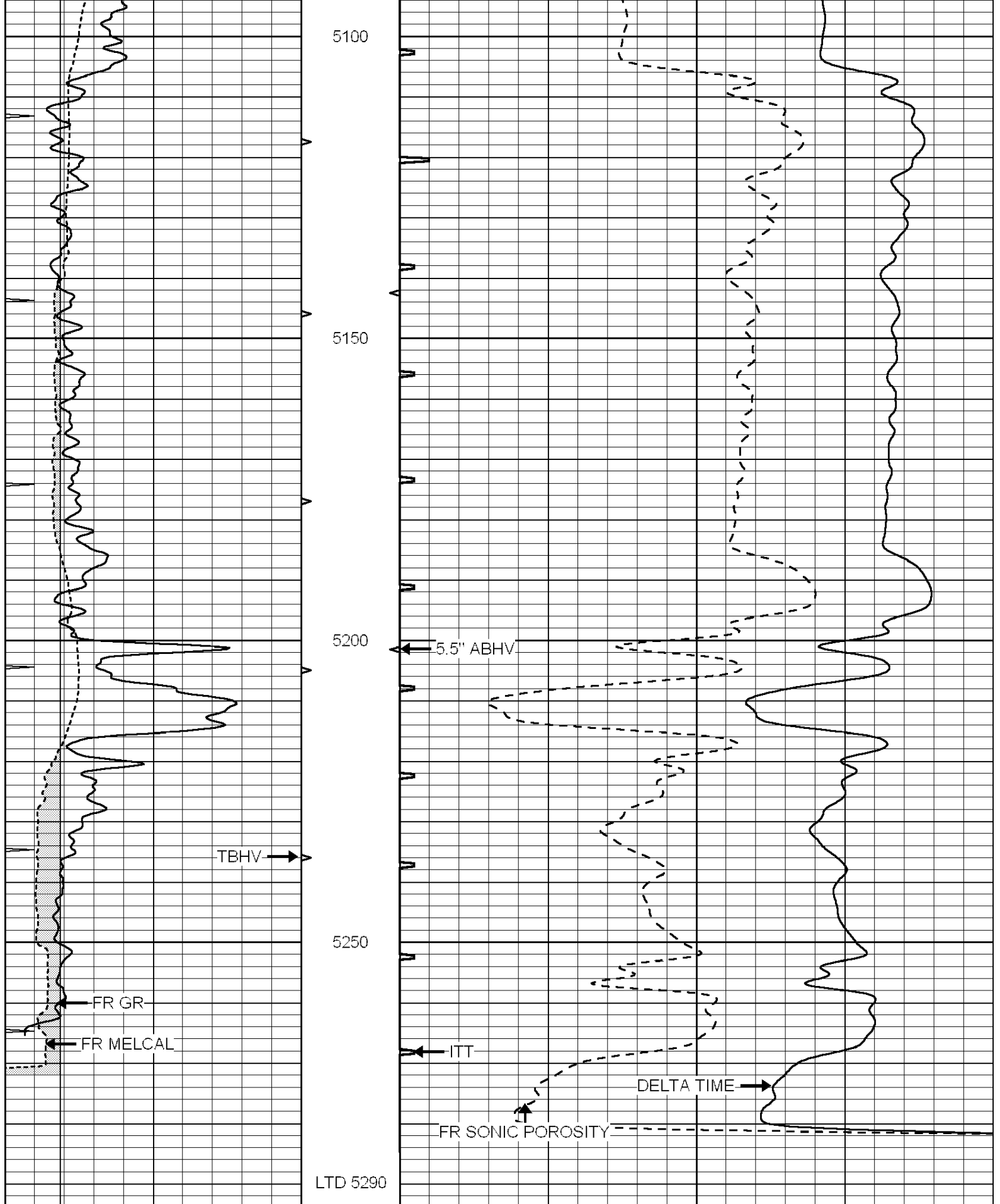
4400











LTD 5290

0	GAMMA RAY (GAPI)	150	ABHV	140	DELTA TIME (usec/ft)	40	
6	CALIPER (in)	16	10 (ft3)	0	30	SONIC POROSITY (pu)	-10
0	MINMK	10	TBHV	0	ITT (msec)	20	
			0 (ft3)	10			

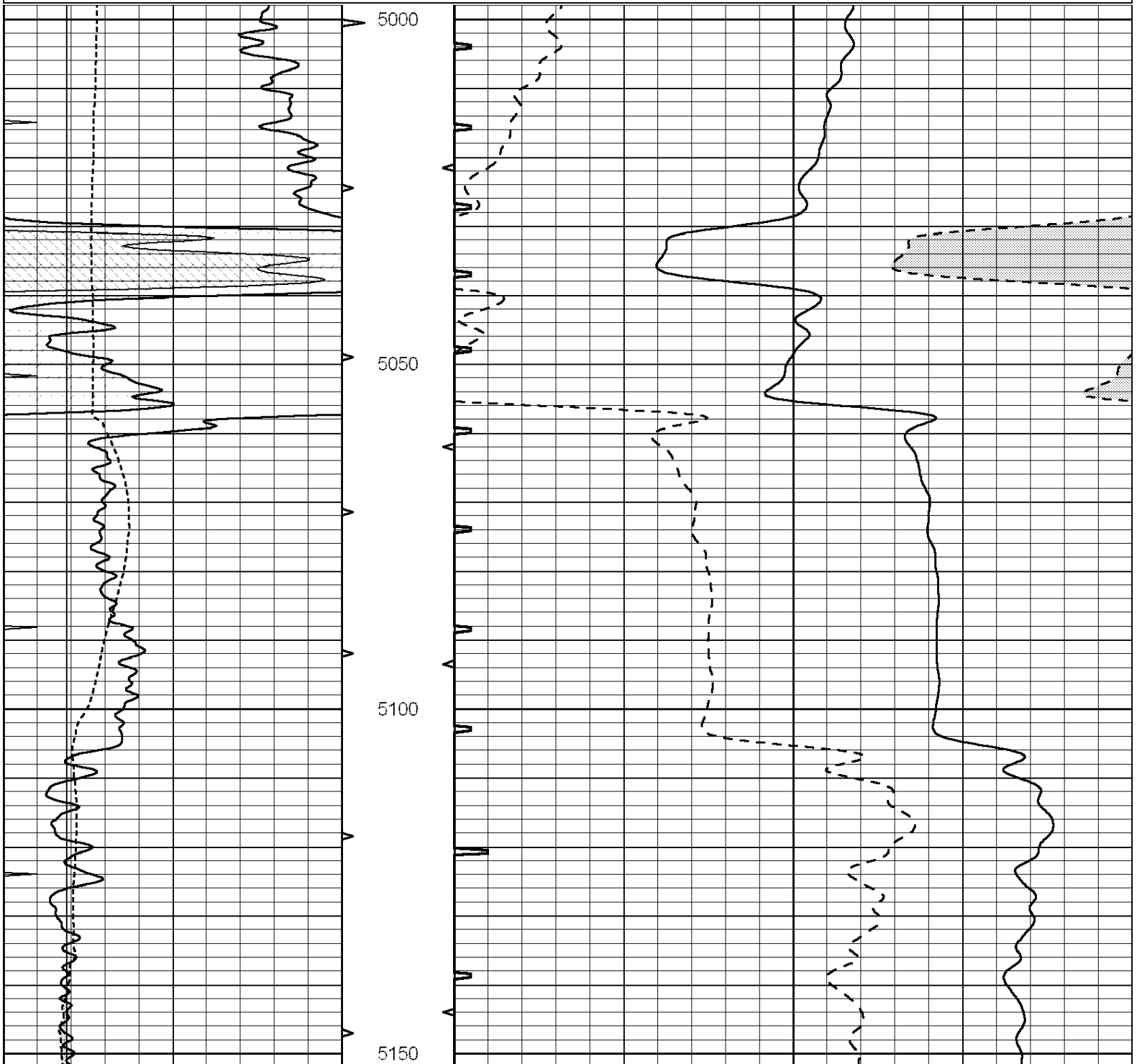


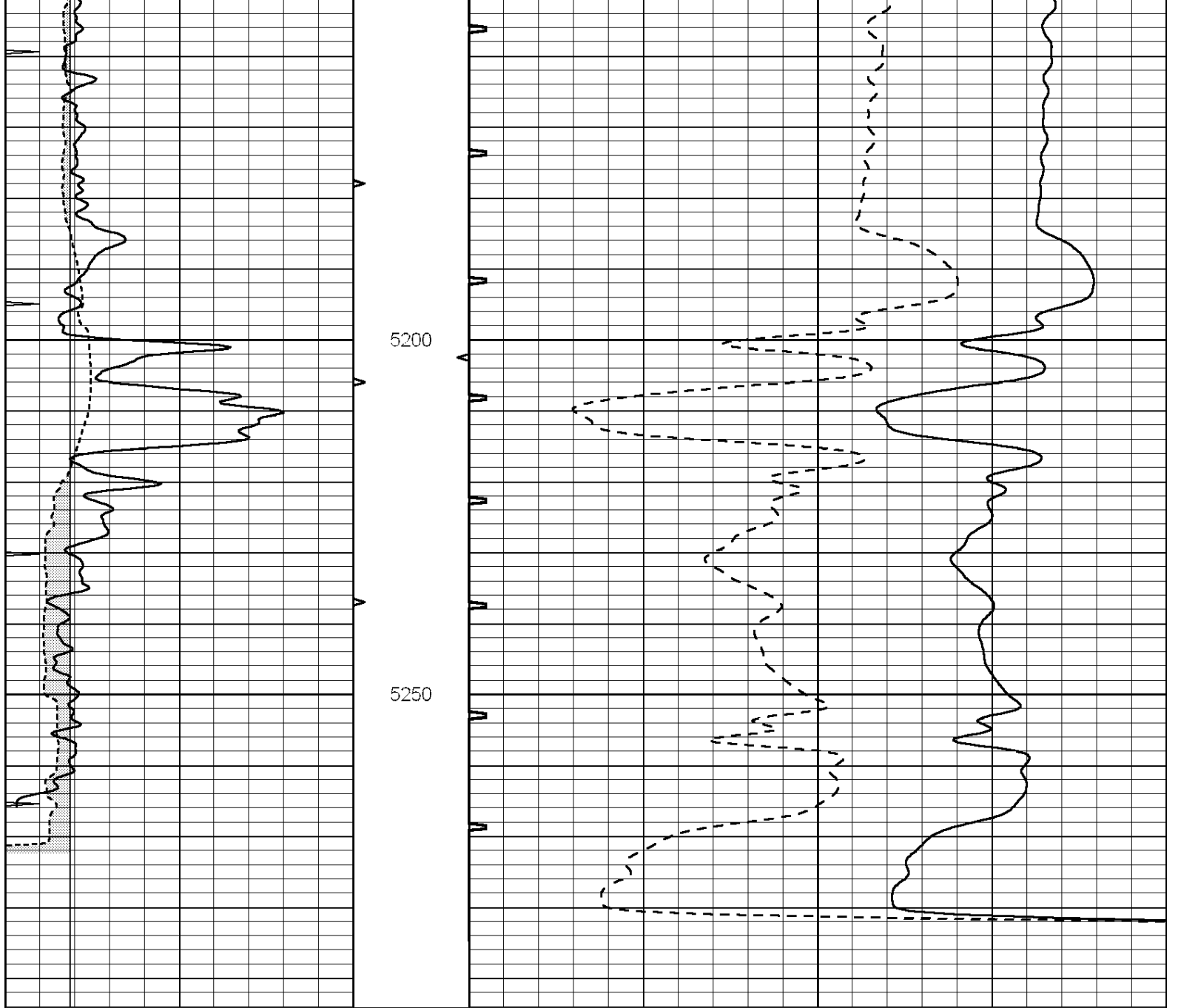
SUPERIOR
Hays,
Kansas

REPEAT SECTION

Database File: 005990pe.db
 Dataset Pathname: pass5.3
 Presentation Format: slt
 Dataset Creation: Thu Oct 07 23:42:26 2010 by Calc Open-Cased 090629
 Charted by: Depth in Feet scaled 1:240

0	GAMMA RAY (GAPI)	150	ABHV	140	DELTA TIME (usec/ft)	40	
6	CALIPER (in)	16	10 (ft3)	0	30	SONIC POROSITY (pu)	-10
0	MINMK	10	TBHV	0	ITT (msec)	20	
			0 (ft3)	10			





0	GAMMA RAY (GAPI)	150	ABHV	140	DELTA TIME (uSec/ft)	40
6	CALIPER (in)	16	10 (ft3)	0 30	SONIC POROSITY (pu)	-10
0	MINMK	10	TBHV	0	ITT (msec)	20
			0 (ft3)	10		