



**SUPERIOR**  
Hays,  
Kansas

**MICRO  
LOG**

Company LOTUS OPERATING CO. LLC.  
Well #4 SUZIE  
Field STRANATHAN  
County BARBER  
State KANSAS

Company LOTUS OPERATING COMPANY, LLC.  
Well #4 SUZIE  
Field STRANATHAN  
County BARBER State KANSAS

Location: API # : 15-007-23591-0000  
495' FSL & 495' FWL  
SEC 30 TWP 34S RGE 11W  
Permanent Datum GROUND LEVEL Elevation 1392  
Log Measured From KELLY BUSHING 8' A.G.L.  
Drilling Measured From KELLY BUSHING  
Other Services  
CDL/CNL/PE  
DIL/SONIC  
Elevation  
K.B. 1400  
D.F. 1398  
G.L. 1392

|                              |                |
|------------------------------|----------------|
| Date                         | 10/7/10        |
| Run Number                   | TWO            |
| Depth Driller                | 5290           |
| Depth Logger                 | 5290           |
| Bottom Logged Interval       | 5267           |
| Top Log Interval             | 3600           |
| Casing Driller               | 10 3/4" @ 275' |
| Casing Logger                | 276            |
| Bit Size                     | 7 7/8"         |
| Type Fluid in Hole           | CHEMICAL MUD   |
| Density / Viscosity          | 9.3/48         |
| pH / Fluid Loss              | 10.0/9.6       |
| Source of Sample             | FLOWLINE       |
| Rim @ Meas. Temp             | 1.00 @ 86F     |
| Rmf @ Meas. Temp             | .750 @ 86F     |
| Rmc @ Meas. Temp             | 1.20 @ 86F     |
| Source of Rmf / Rmc          | MEASUREMENT    |
| Rim @ BHT                    | .672 @ 128F    |
| Time Circulation Stopped     | 5.5 HOURS      |
| Time Logger on Bottom        | 7:30 P.M.      |
| Maximum Recorded Temperature | 128F           |
| Equipment Number             | 0836           |
| Location                     | HAYS, KANSAS   |
| Recorded By                  | JEFF LUEBBERS  |
| Witnessed By                 | TIM HELLMAN    |

<<< Fold Here >>>

All interpretations are opinions based on inferences from electrical or other measurements and we cannot and do not guarantee the accuracy or correctness of any interpretation, and we shall not, except in the case of gross or willful negligence on our part, be liable or responsible for any loss, costs, damages, or expenses incurred or sustained by anyone resulting from any interpretation made by any of our officers, agents or employees. These interpretations are also subject to our general terms and conditions set out in our current Price Schedule.

Comments

THANK YOU FOR USING SUPERIOR WELL SERVICE HAYS, KANSAS (785) 628-6395  
DIRECTIONS  
MEDICINE LODGE, KS. (HWY 281 & 160 JUNCTION) 16S. TO "MM #8" (RATTLESNAKE TRAIL RD.) 1/8E.,  
N. INTO

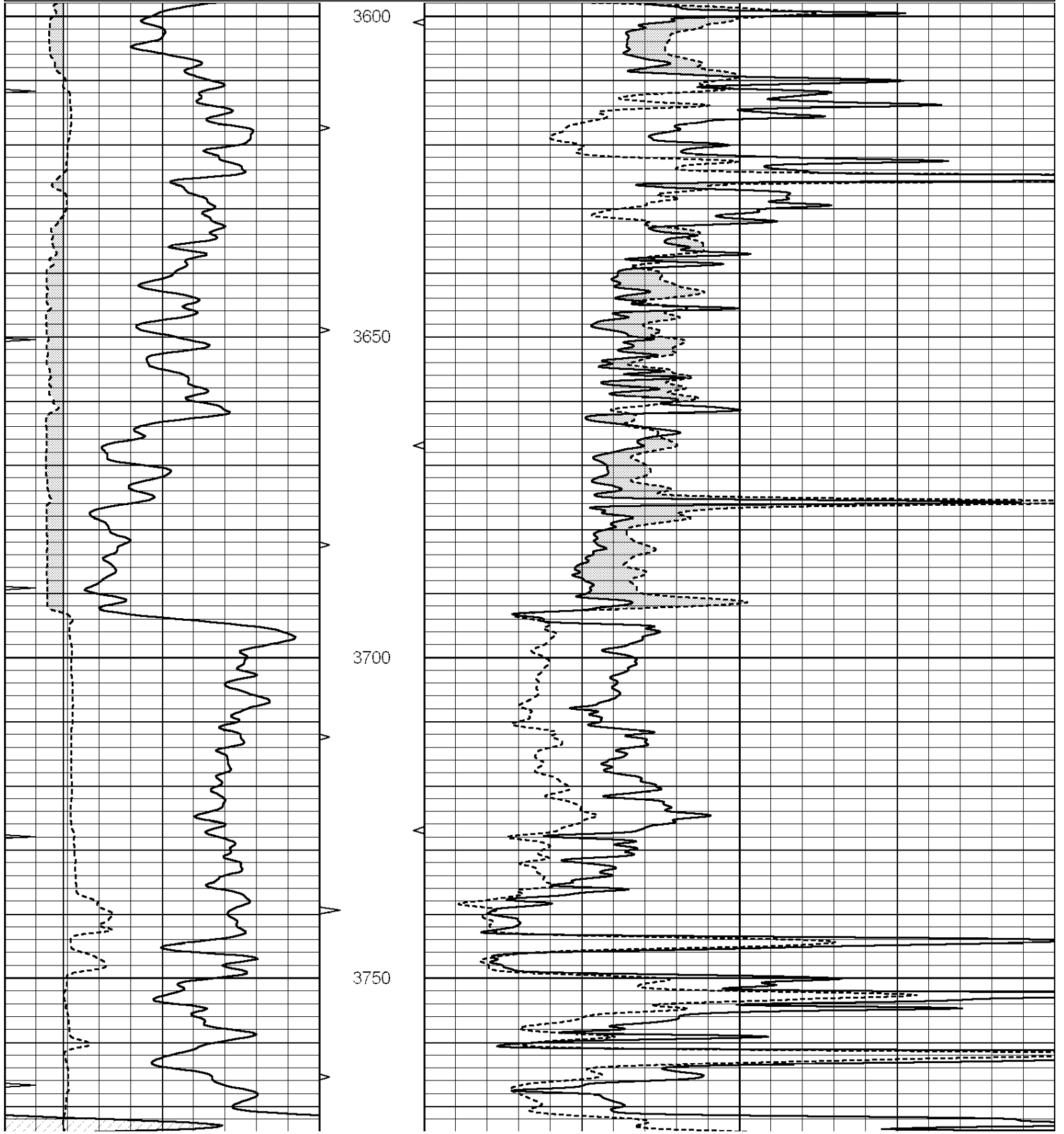


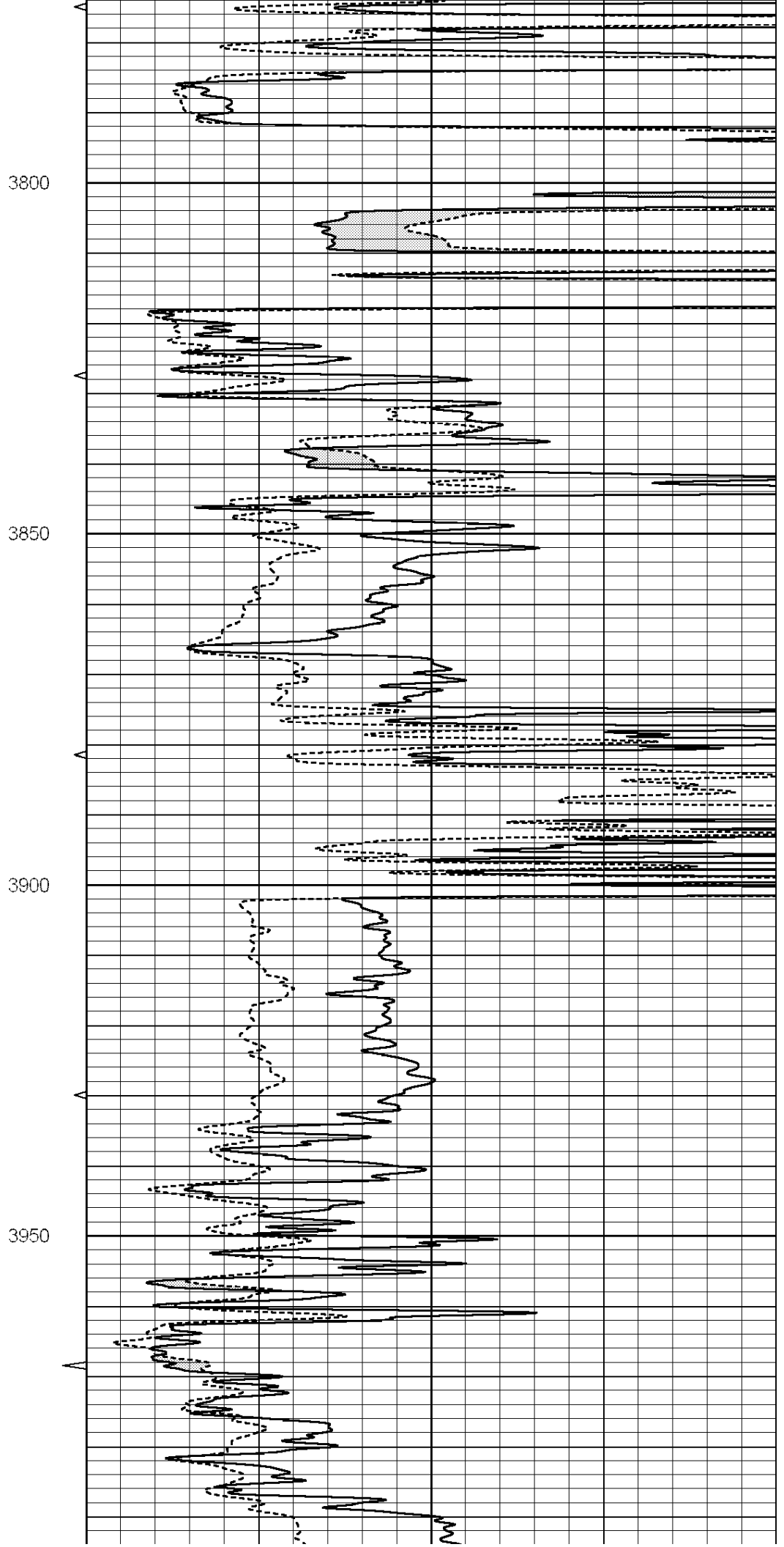
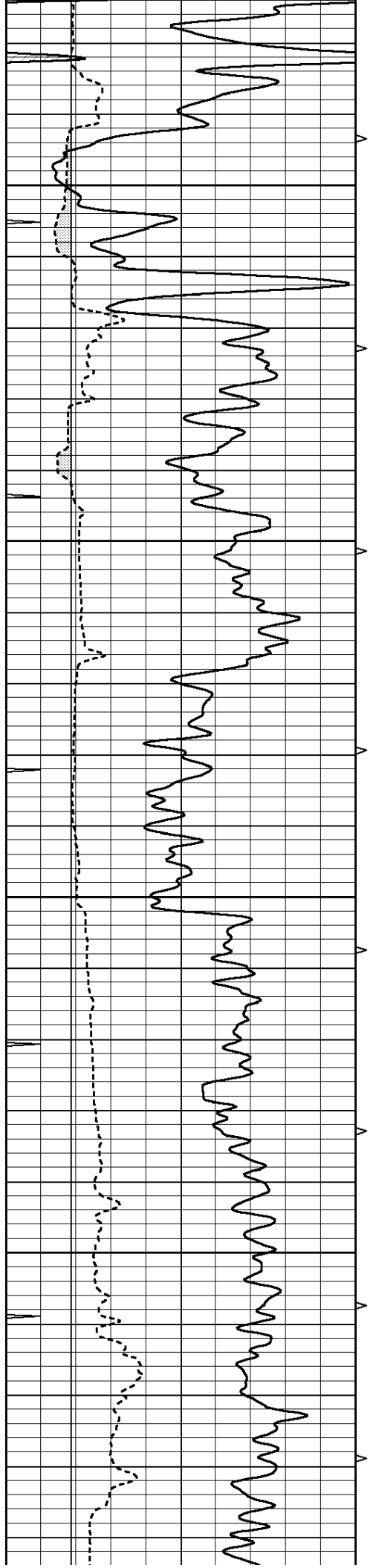
**SUPERIOR**  
Hays,  
Kansas

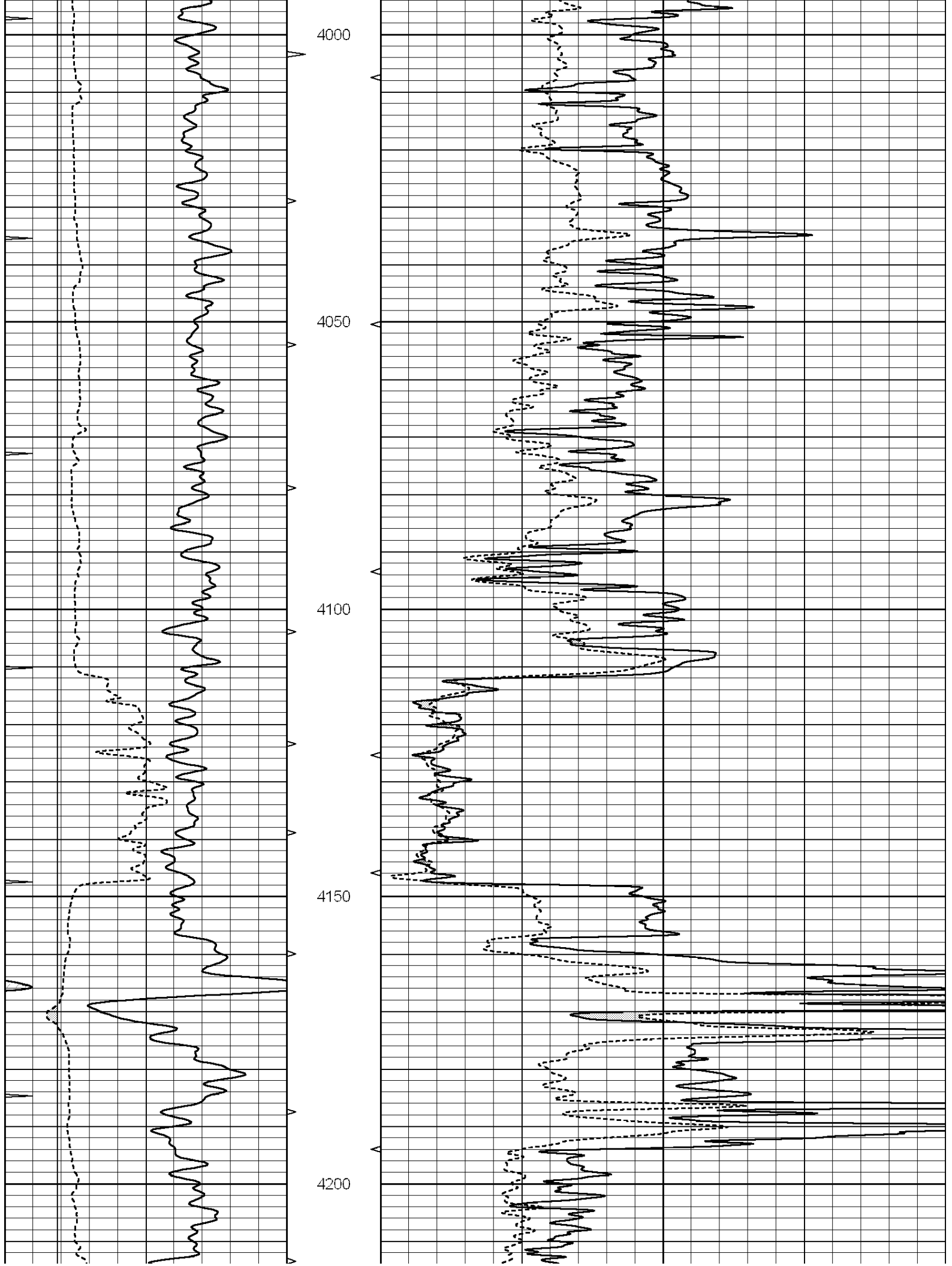
**MAIN SECTION**

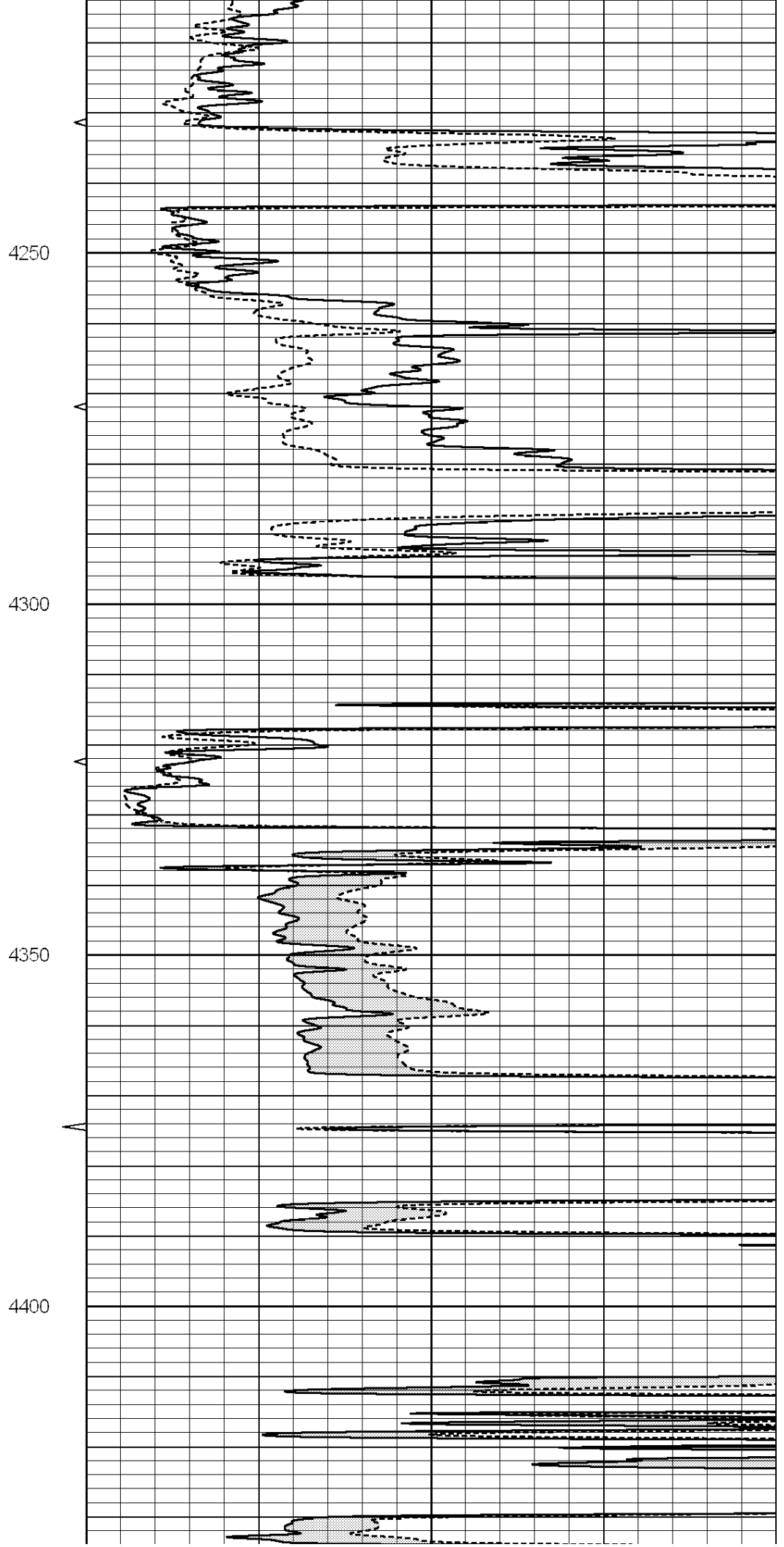
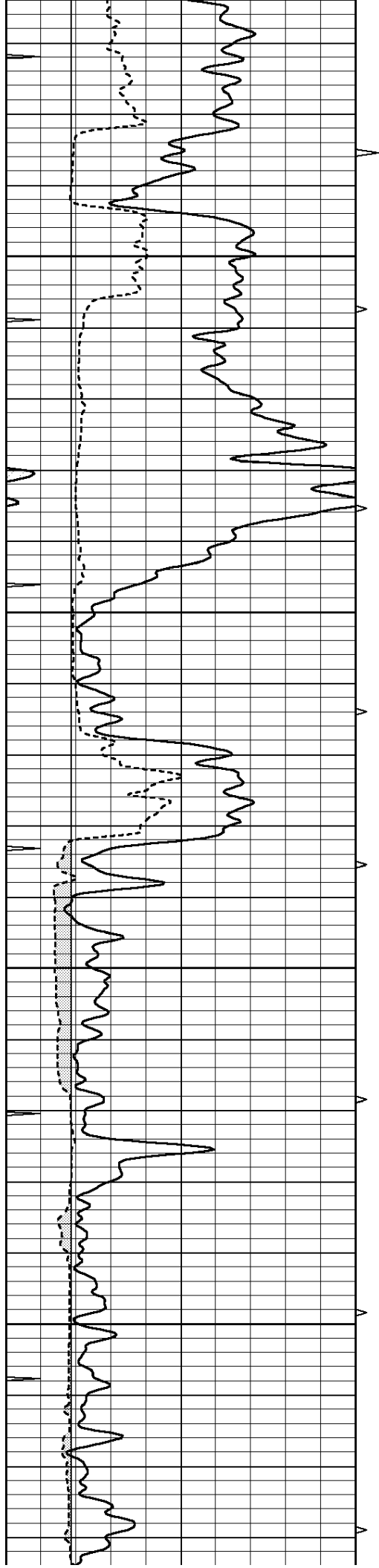
Database File: 005990pe.db  
 Dataset Pathname: pass6.5  
 Presentation Format: micro  
 Dataset Creation: Thu Oct 07 23:46:27 2010  
 Charted by: Depth in Feet scaled 1:240

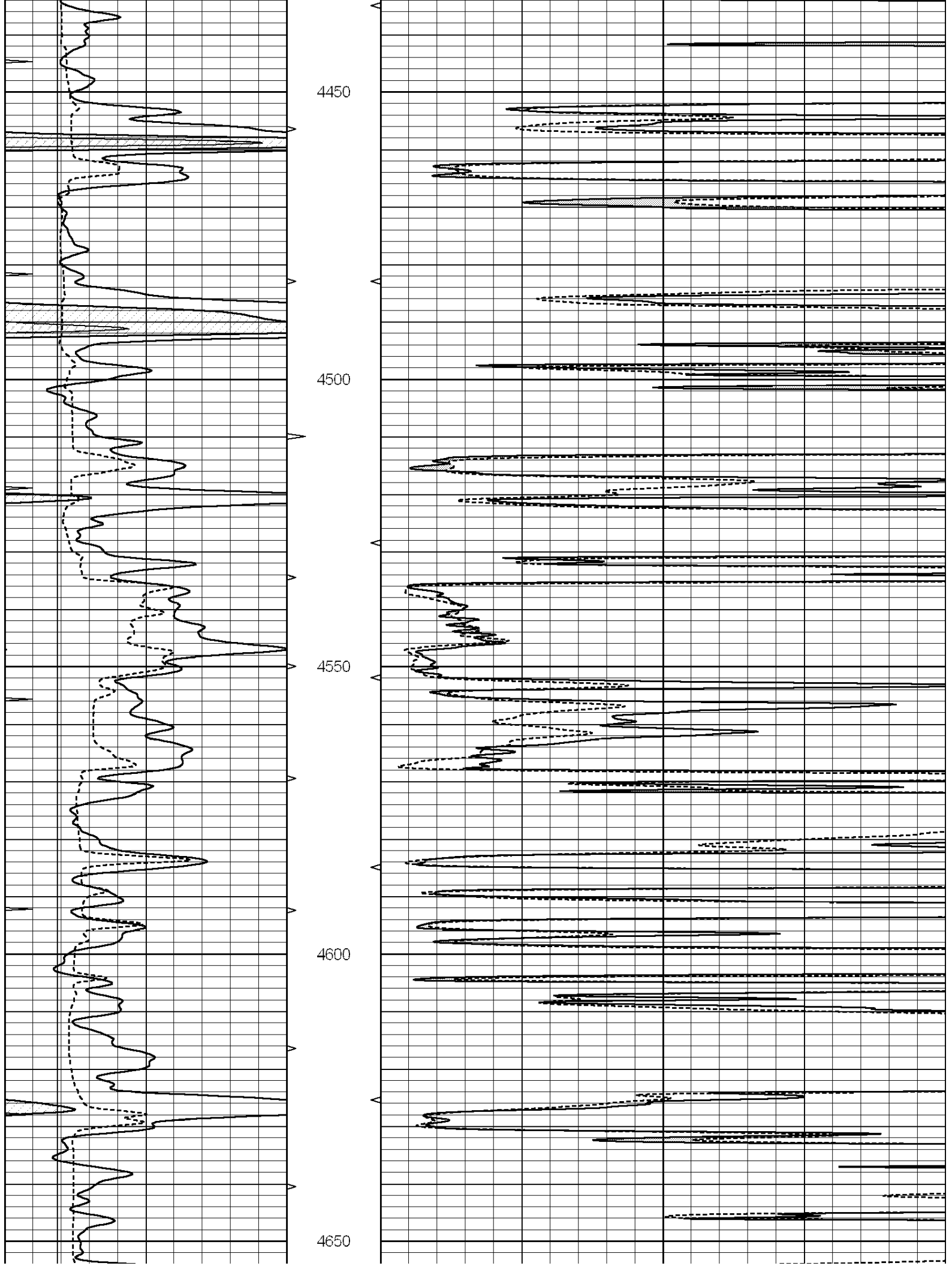
|   |                  |     |          |    |                |    |
|---|------------------|-----|----------|----|----------------|----|
| 0 | GAMMA RAY (GAPI) | 150 | ABHV     | 0  | MEL1.5 (Ohm-m) | 20 |
| 6 | CALIPER (in)     | 16  | 10 (ft3) | 0  | MEL2.0 (Ohm-m) | 20 |
| 0 | MINMK            | 10  | TBHV     |    |                |    |
|   |                  |     | 0 (ft3)  | 10 |                |    |

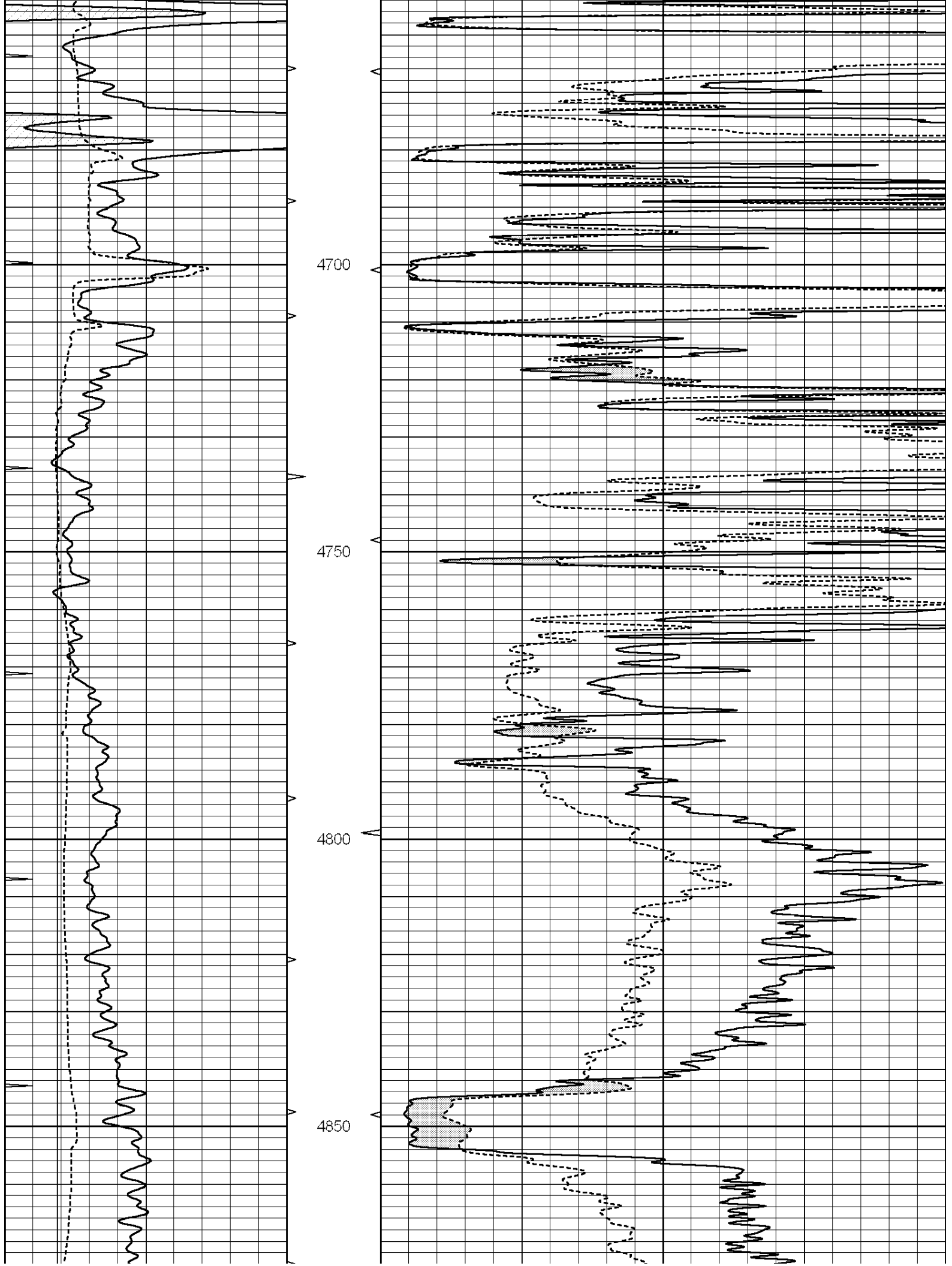


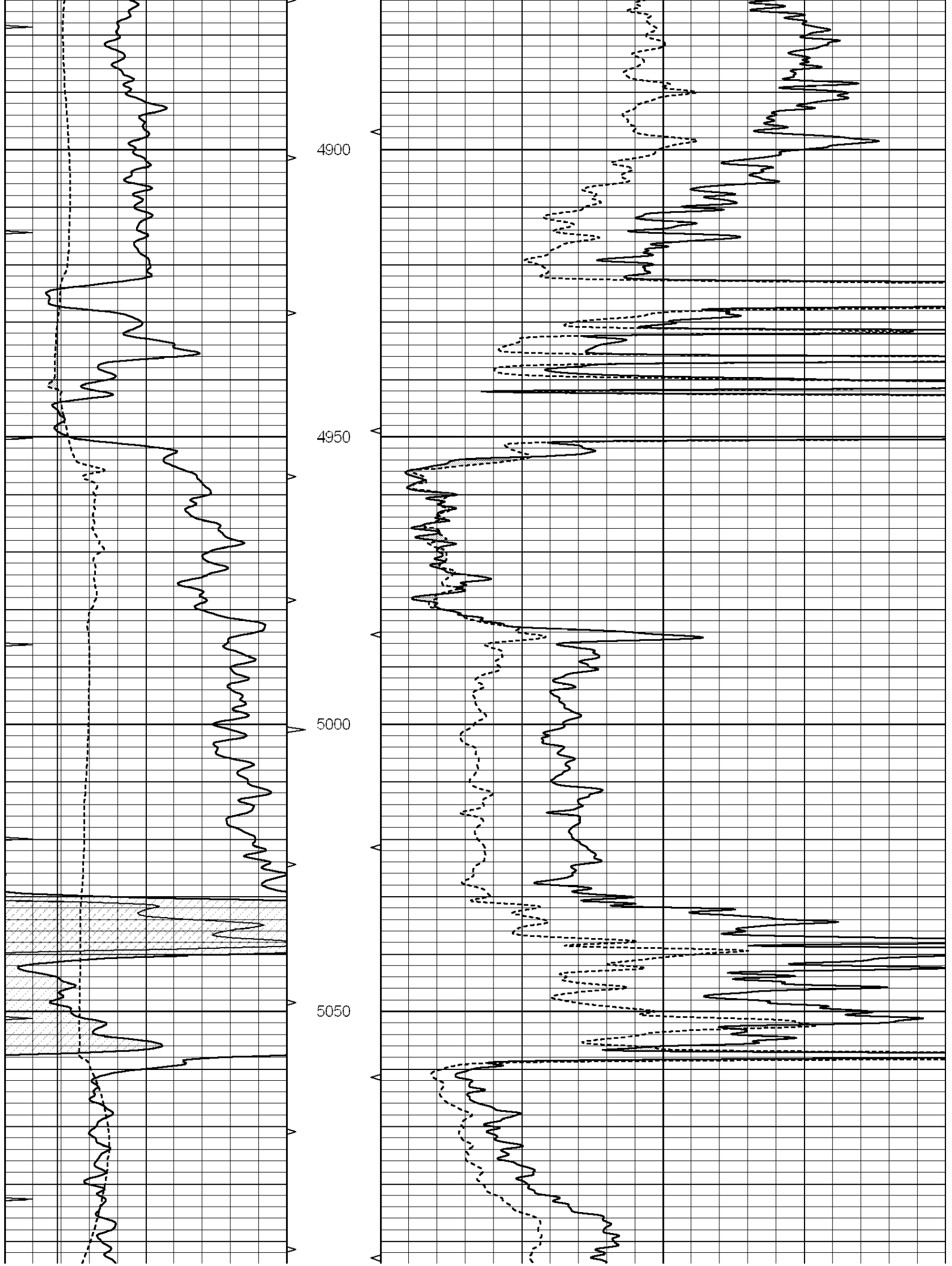


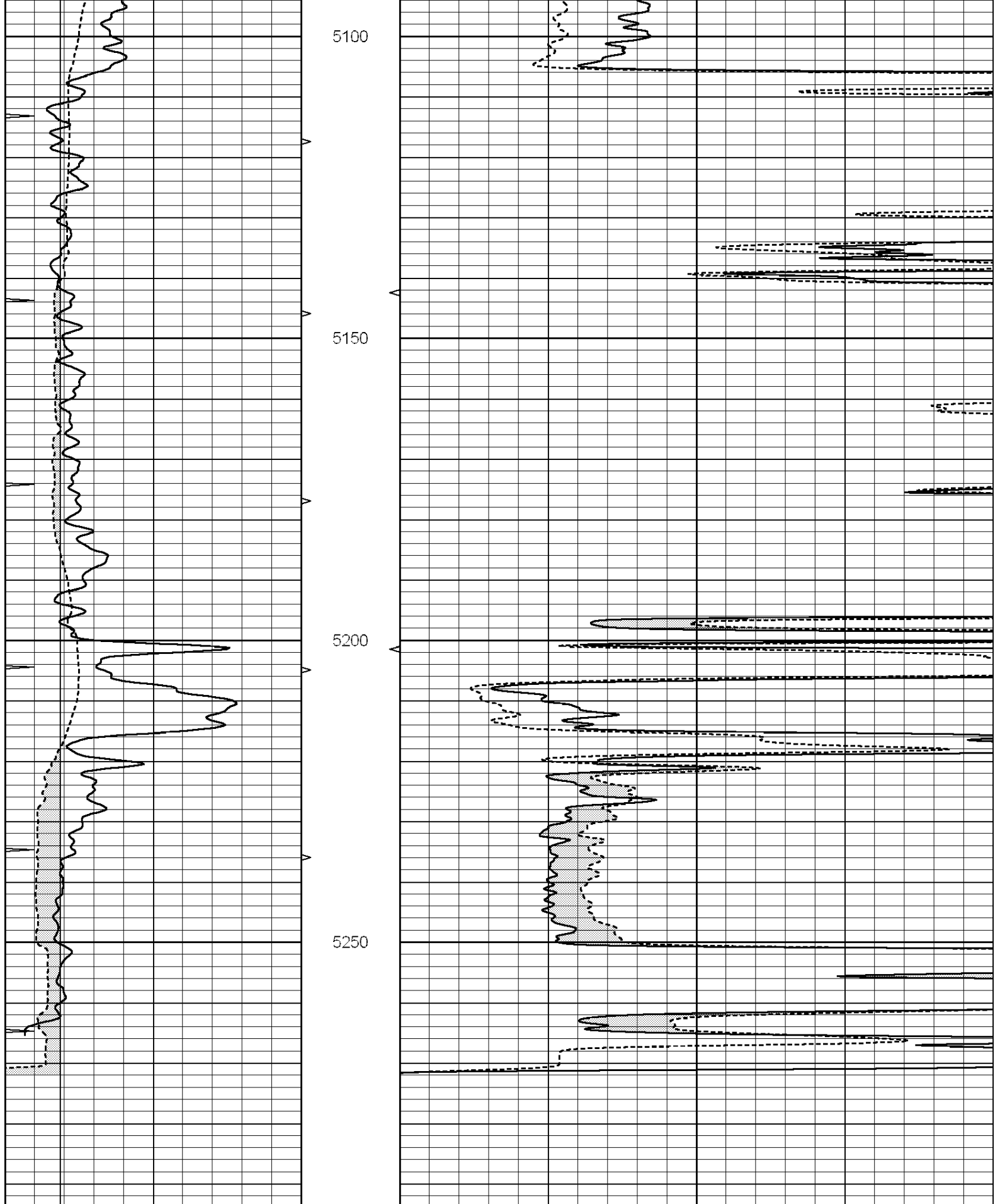












|   |                  |     |          |    |                |    |
|---|------------------|-----|----------|----|----------------|----|
| 0 | GAMMA RAY (GAPI) | 150 | ABHV     | 0  | MEL1.5 (Ohm-m) | 20 |
| 6 | CALIPER (in)     | 16  | 10 (ft3) | 0  | MEL2.0 (Ohm-m) | 20 |
| 0 | MINMK            | 10  | TBHV     |    |                |    |
|   |                  |     | 0 (ft3)  | 10 |                |    |

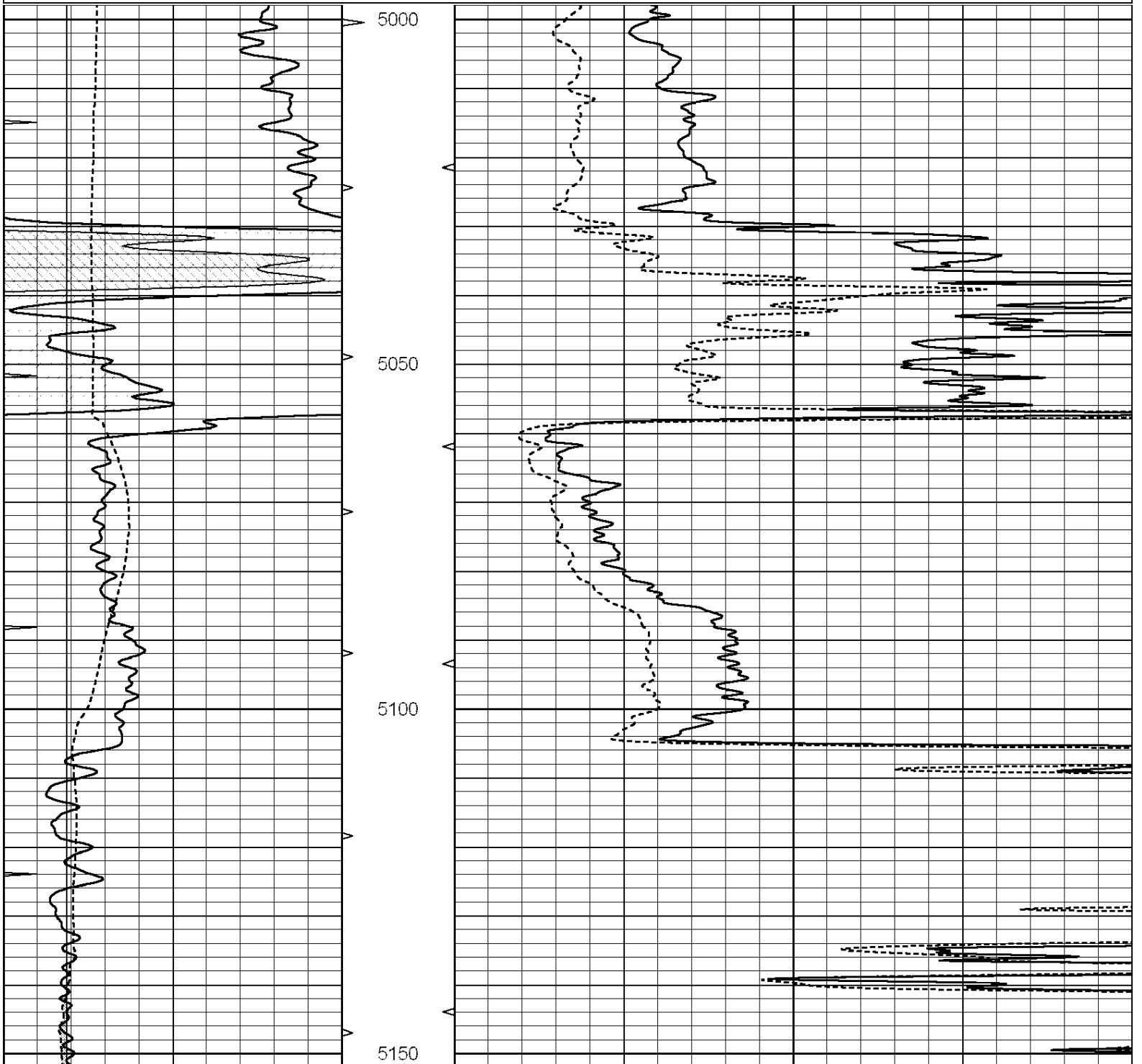


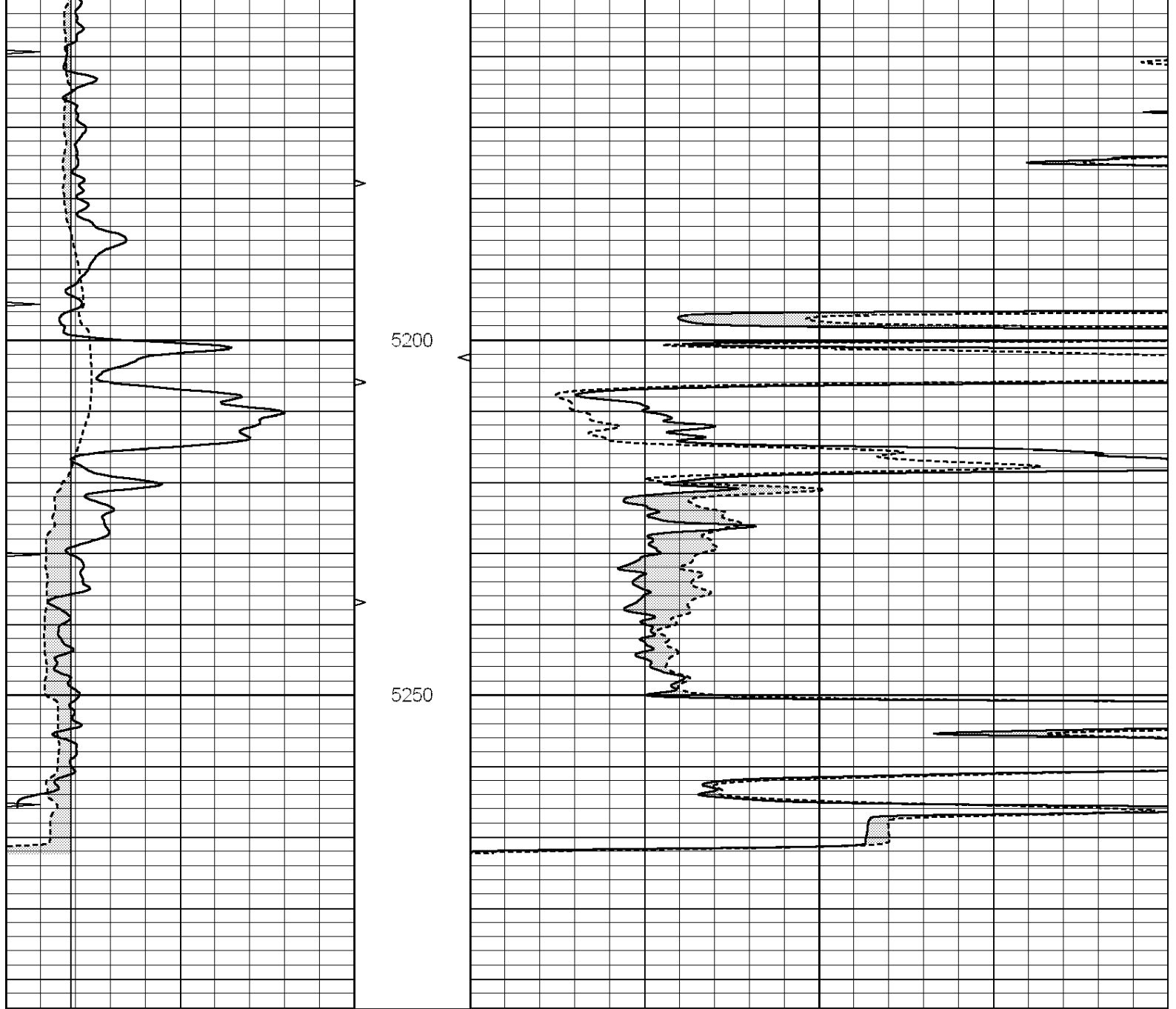
SUPERIOR  
Hays,  
Kansas

# REPEAT SECTION

Database File: 005990pe.db  
 Dataset Pathname: pass5.3  
 Presentation Format: micro  
 Dataset Creation: Thu Oct 07 23:42:26 2010 by Calc Open-Cased 090629  
 Charted by: Depth in Feet scaled 1:240

|   |                  |     |            |     |                |    |
|---|------------------|-----|------------|-----|----------------|----|
| 0 | GAMMA RAY (GAPI) | 150 | ABHV       | 0   | MEL1.5 (Ohm-m) | 20 |
| 6 | CALIPER (in)     | 16  | 10 (ft3)   | 0 0 | MEL2.0 (Ohm-m) | 20 |
| 0 | MINMK            | 10  | TBHV       |     |                |    |
|   |                  |     | 0 (ft3) 10 |     |                |    |





|   |                  |     |          |    |                |    |
|---|------------------|-----|----------|----|----------------|----|
| 0 | GAMMA RAY (GAPI) | 150 | ABHV     | 0  | MEL1.5 (Ohm-m) | 20 |
| 6 | CALIPER (in)     | 16  | 10 (ft3) | 0  | MEL2.0 (Ohm-m) | 20 |
| 0 | MINMK            | 10  | TBHV     |    |                |    |
|   |                  |     | 0 (ft3)  | 10 |                |    |

### Calibration Report

Database File: 005990pe.db  
 Dataset Pathname: pass6.5  
 Dataset Creation: Thu Oct 07 23:46:27 2010

### MICRO Calibration Report

Serial Number: MICRO5  
 Tool Model: PROBE  
 Performed: Thu Oct 07 22:01:57 2010

Caliper Calibration: Gain=3.127      Offset=-1.512

|            |         |          |
|------------|---------|----------|
| References | Low Cal | High Cal |
| Readings   | 6.100   | 13.000   |
|            | 2.435   | 4.641    |

|                   |                  |                    |
|-------------------|------------------|--------------------|
| 1.5" Calibration: | Gain=33.000      | Offset=-0.600      |
| References        | Low Cal<br>0.000 | High Cal<br>20.000 |
| Readings          | 0.008            | 0.991              |

|                 |                  |                    |
|-----------------|------------------|--------------------|
| 2" Calibration: | Gain=36.000      | Offset=-0.800      |
| References      | Low Cal<br>0.000 | High Cal<br>20.000 |
| Readings        | 0.014            | 0.905              |

|                              |  |  |
|------------------------------|--|--|
| Gamma Ray Calibration Report |  |  |
|------------------------------|--|--|

|                     |                          |          |
|---------------------|--------------------------|----------|
| Serial Number:      | GR4                      |          |
| Tool Model:         | OPEN                     |          |
| Performed:          | Thu Oct 07 23:12:33 2010 |          |
| Calibrator Value:   | 200.0                    | GAPI     |
| Background Reading: | 0.0                      | cps      |
| Calibrator Reading: | 189.0                    | cps      |
| Sensitivity:        | 0.9000                   | GAPI/cps |