



**SUPERIOR**  
Hays,  
Kansas

**DUAL INDUCTION  
LOG**

Company LOTUS OPERATING CO. LLC.  
Well #4 SUZIE  
Field STRANATHAN  
County BARBER  
State KANSAS

Company LOTUS OPERATING COMPANY, LLC.  
Well #4 SUZIE  
Field STRANATHAN  
County BARBER State KANSAS

Location: API # : 15-007-23591-0000  
495' FSL & 495' FWL  
SEC 30 TWP 34S RGE 11W  
Permanent Datum GROUND LEVEL Elevation 1392  
Log Measured From KELLY BUSHING 8' A.G.L.  
Drilling Measured From KELLY BUSHING  
Elevation  
K.B. 1400  
D.F. 1398  
G.L. 1392

Date	10/7/10
Run Number	ONE
Depth Driller	5290
Depth Logger	5290
Bottom Logged Interval	5288
Top Log Interval	00
Casing Driller	10 3/4" @ 275'
Casing Logger	276
Bit Size	7 7/8"
Type Fluid in Hole	CHEMICAL MUD
Density / Viscosity	9.3/48
pH / Fluid Loss	10.0/9.6
Source of Sample	FLOWLINE
Rin @ Meas. Temp	1.00 @ 86F
Rmf @ Meas. Temp	.750 @ 86F
Rmc @ Meas. Temp	1.20 @ 86F
Source of Rmf / Rmc	MEASUREMENT
Rin @ BHT	.672 @ 128F
Time Circulation Stopped	3 HOURS
Time Logger on Bottom	7:30 P.M.
Maximum Recorded Temperature	128F
Equipment Number	0836
Location	HAYS, KANSAS
Recorded By	JEFF LUEBBERS
Witnessed By	TIM HELLMAN

<<< Fold Here >>>

All interpretations are opinions based on inferences from electrical or other measurements and we cannot and do not guarantee the accuracy or correctness of any interpretation, and we shall not, except in the case of gross or willful negligence on our part, be liable or responsible for any loss, costs, damages, or expenses incurred or sustained by anyone resulting from any interpretation made by any of our officers, agents or employees. These interpretations are also subject to our general terms and conditions set out in our current Price Schedule.

Comments

THANK YOU FOR USING SUPERIOR WELL SERVICE HAYS, KANSAS (785) 628-6395  
DIRECTIONS  
MEDICINE LODGE, KS. (HWY 281 & 160 JUNCTION) 16S. TO "MM #8" (RATTLESNAKE TRAIL RD.) 1/8E.,  
N. INTO



**SUPERIOR**  
Hays,  
Kansas

**MAIN SECTION**

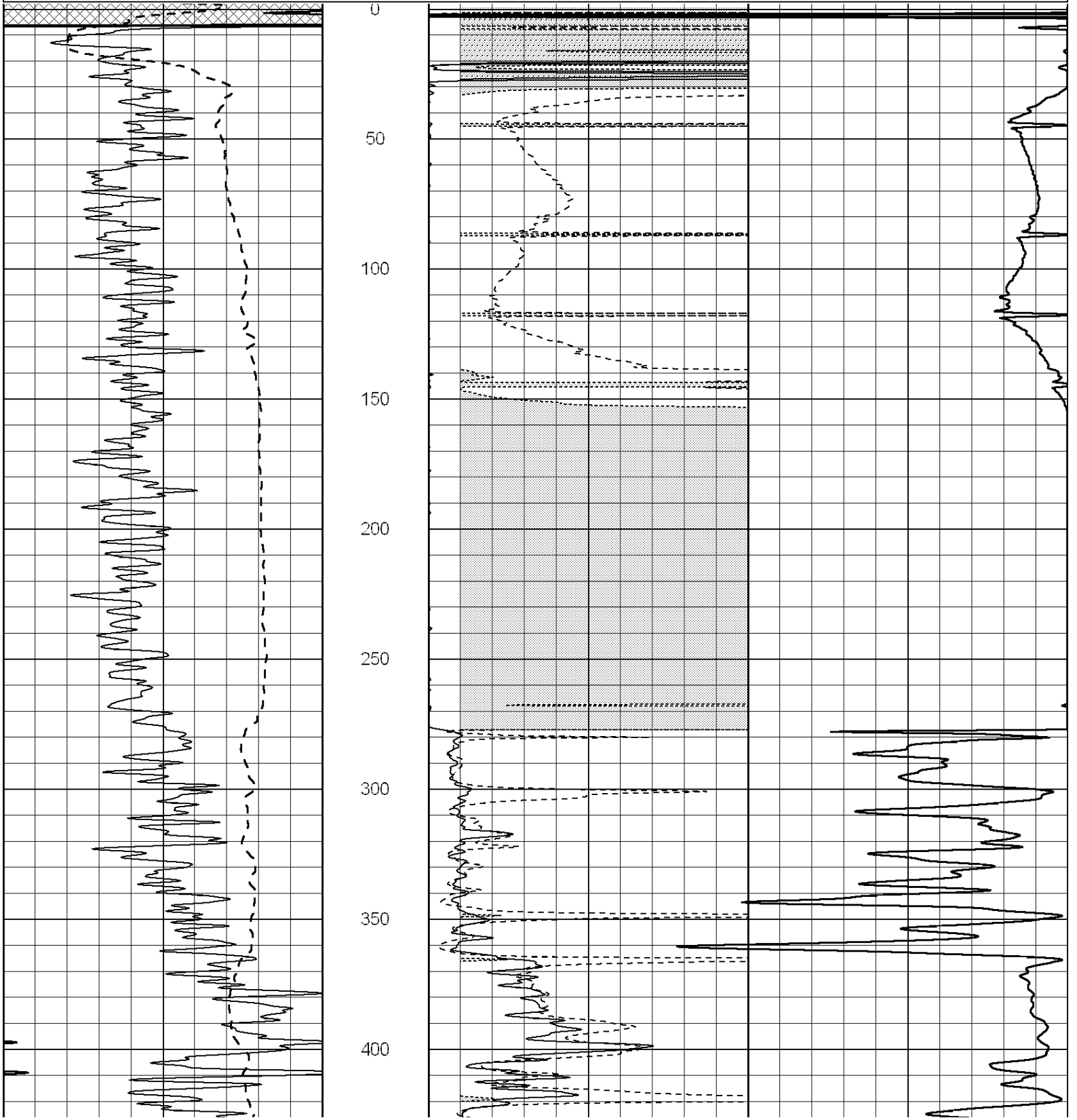
Database File: 005990pe.db  
 Dataset Pathname: pass3.6  
 Presentation Format: dil2  
 Dataset Creation: Thu Oct 07 21:44:10 2010 by Calc Open-Cased 090629  
 Charted by: Depth in Feet scaled 1:600

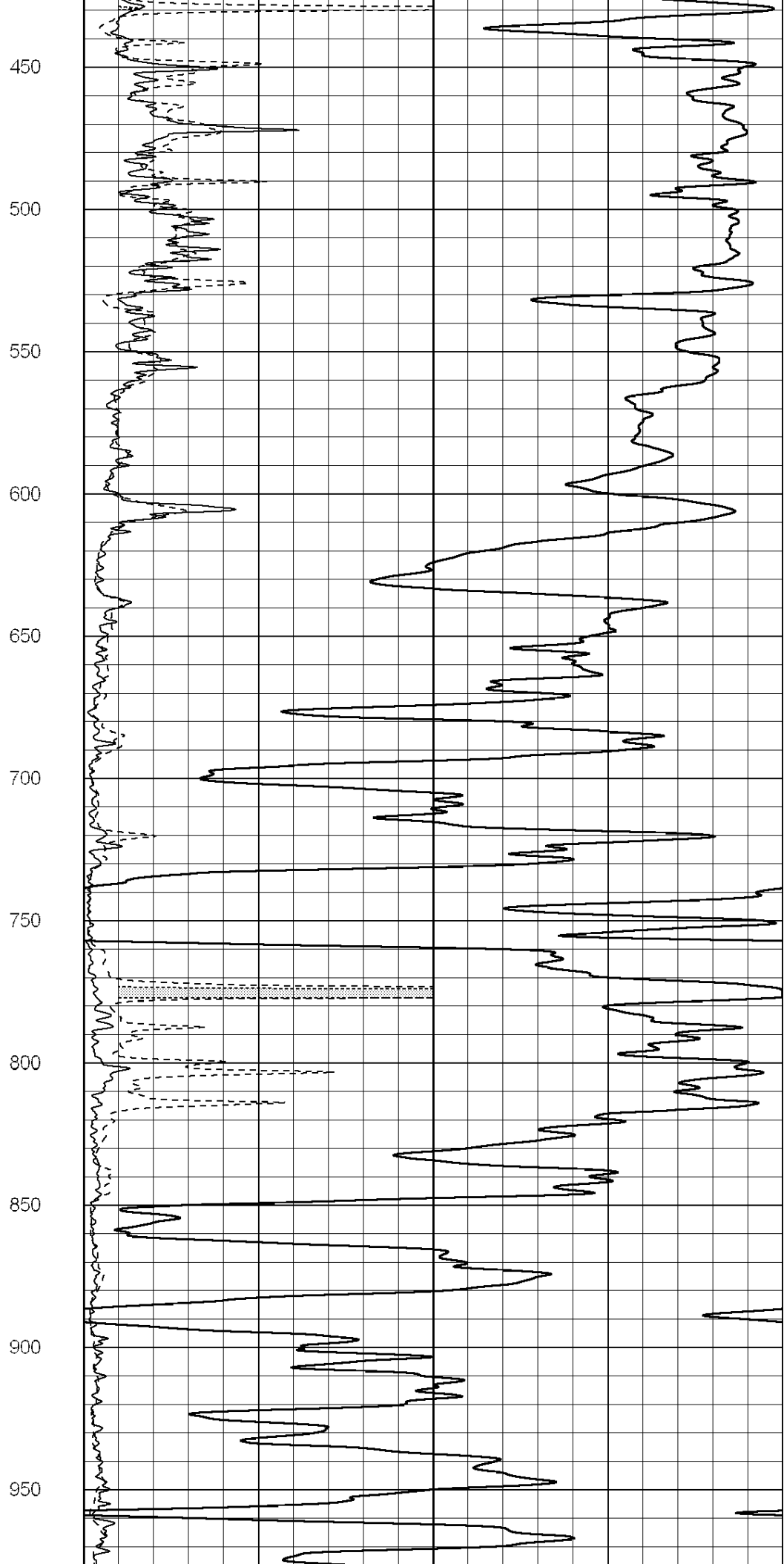
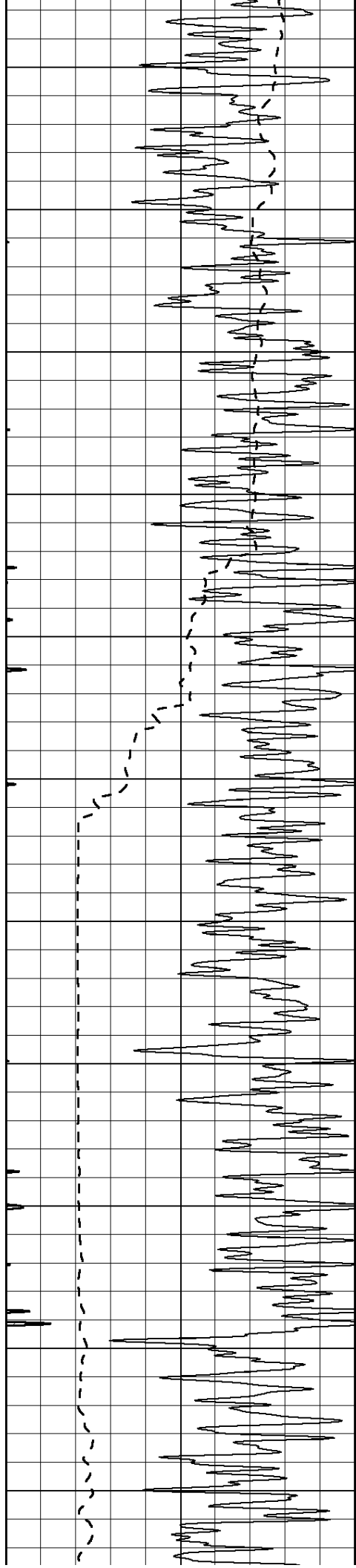
0	Gamma Ray (GAPI)	150
-100	SP (mV)	100

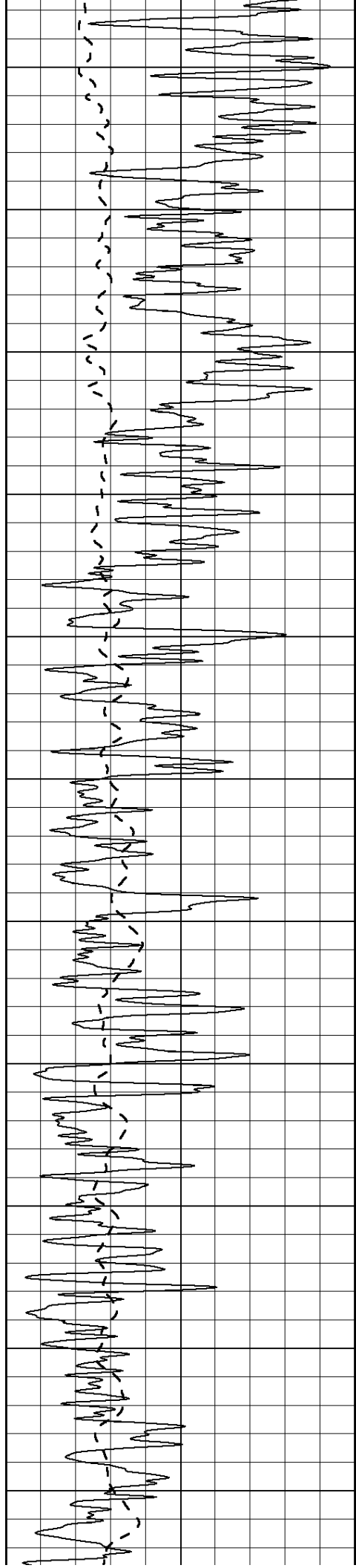
0	RLL3 (Ohm-m)	50
0	RILD (Ohm-m)	50

1000	CILD (mmho/m)	0
------	---------------	---

50	RILD X10 (Ohm-m)	500
50	RLL3 X10 (Ohm-m)	500







1000

1050

1100

1150

1200

1250

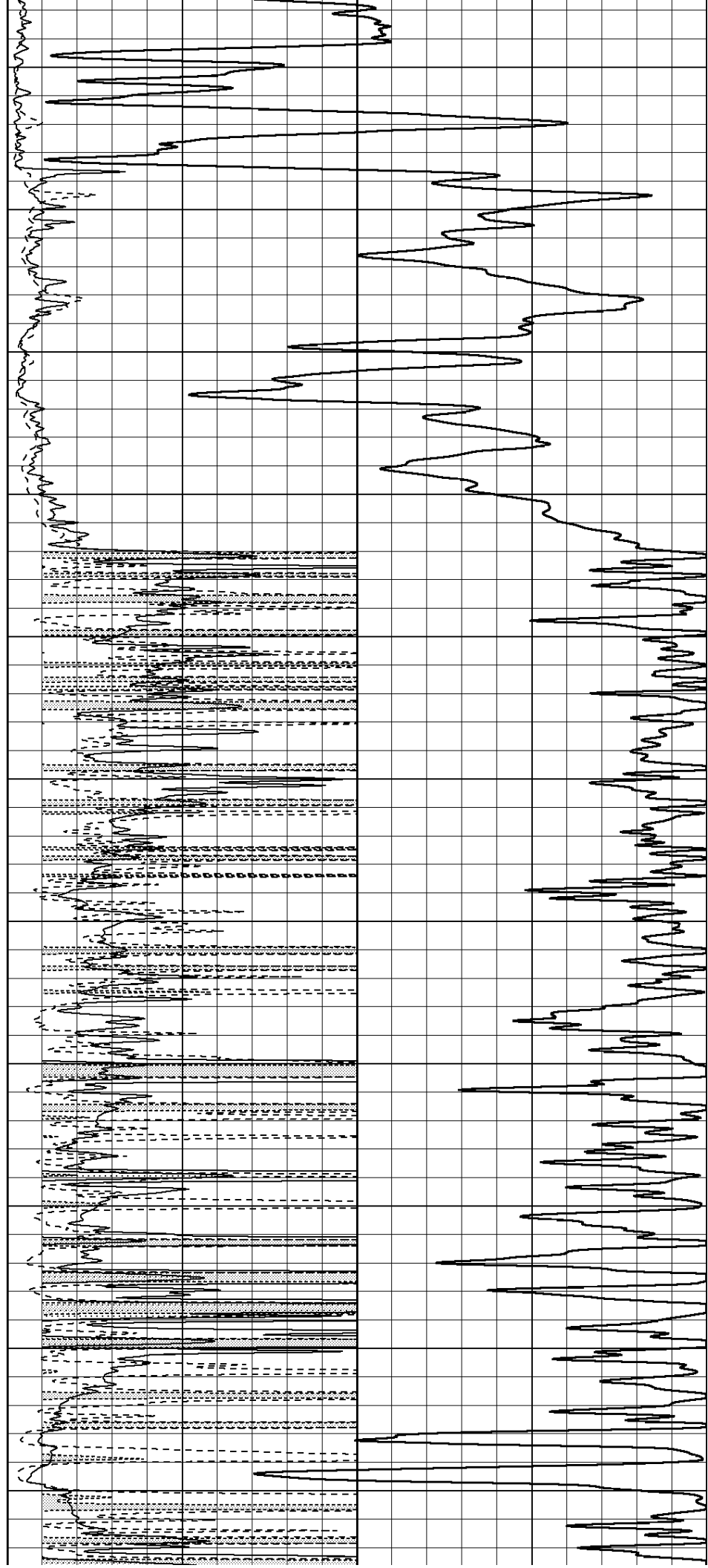
1300

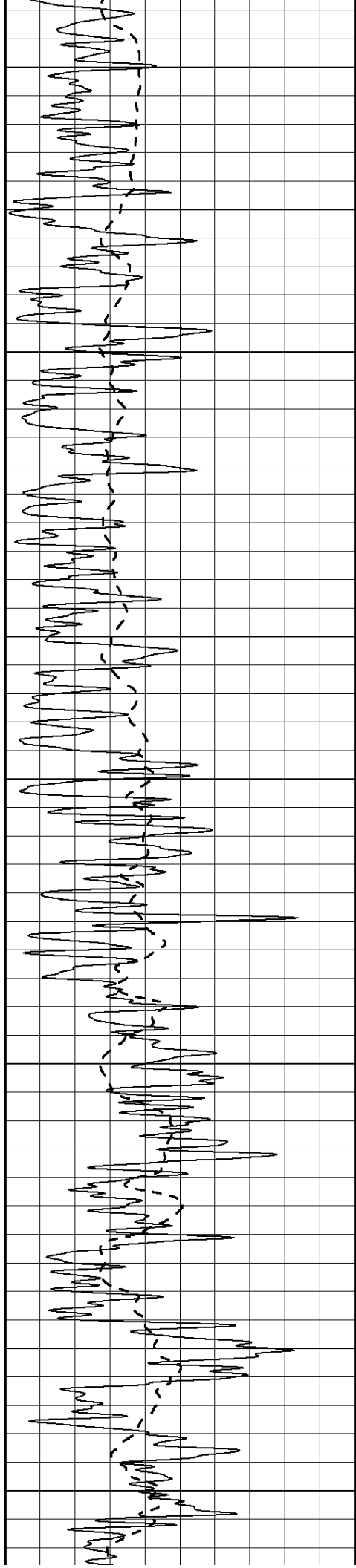
1350

1400

1450

1500





1550

1600

1650

1700

1750

1800

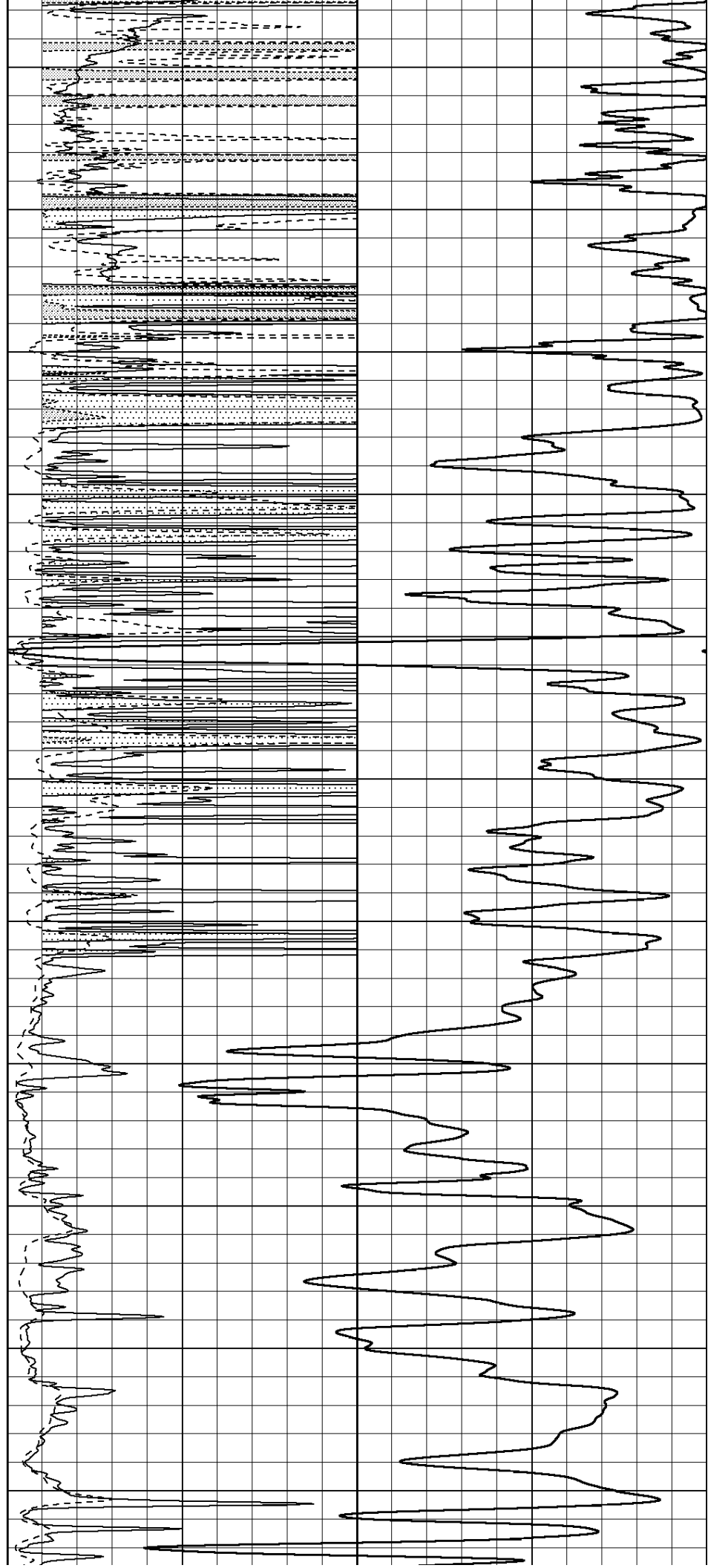
1850

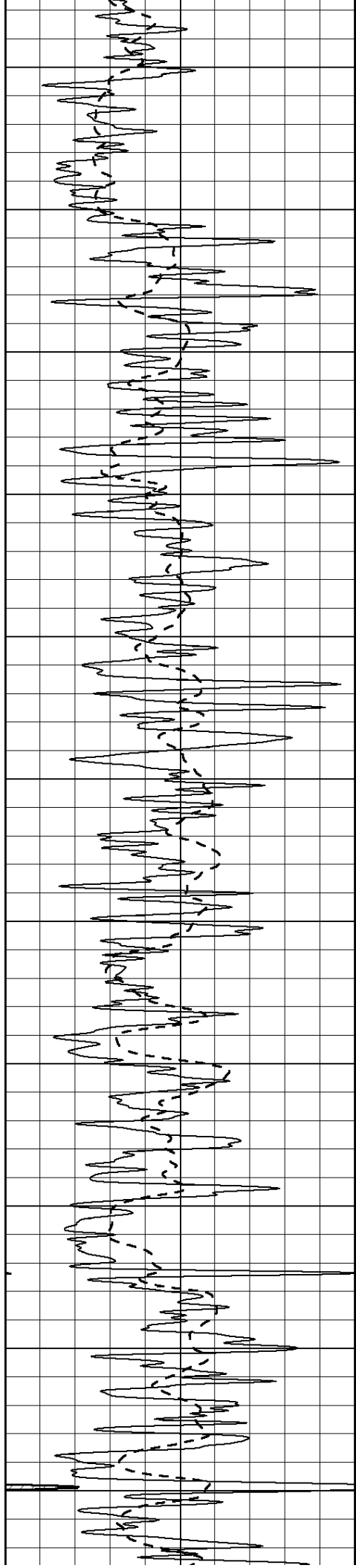
1900

1950

2000

2050





2100

2150

2200

2250

2300

2350

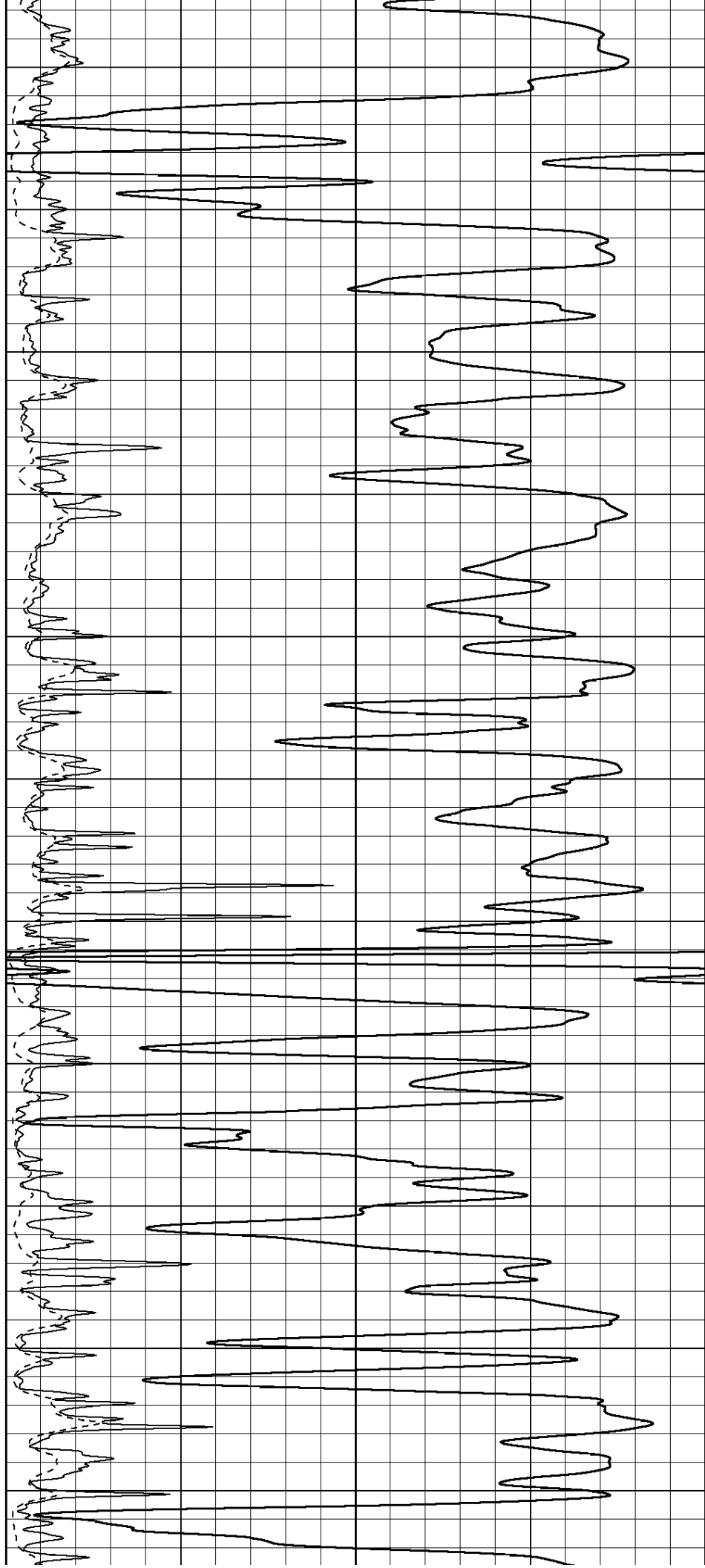
2400

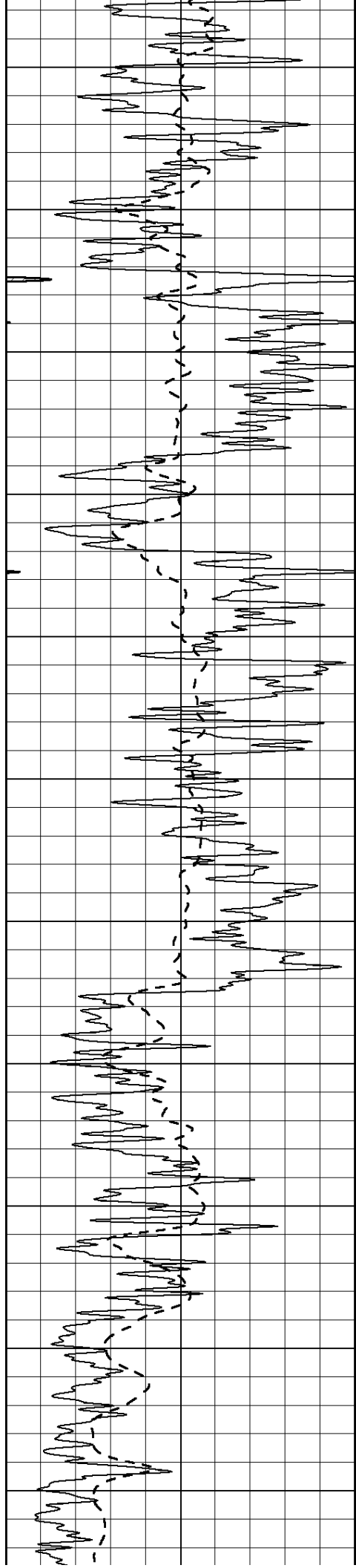
2450

2500

2550

2600





2650

2700

2750

2800

2850

2900

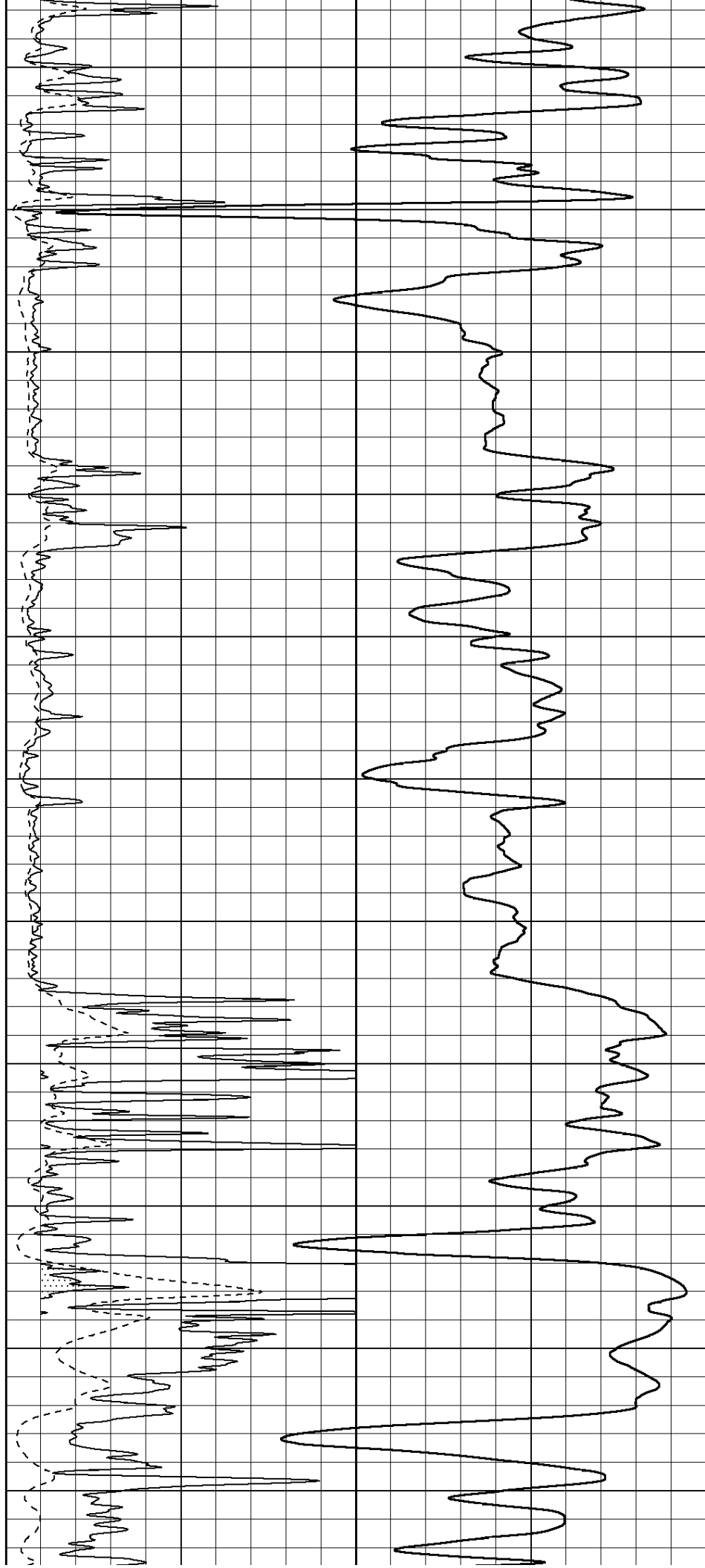
2950

3000

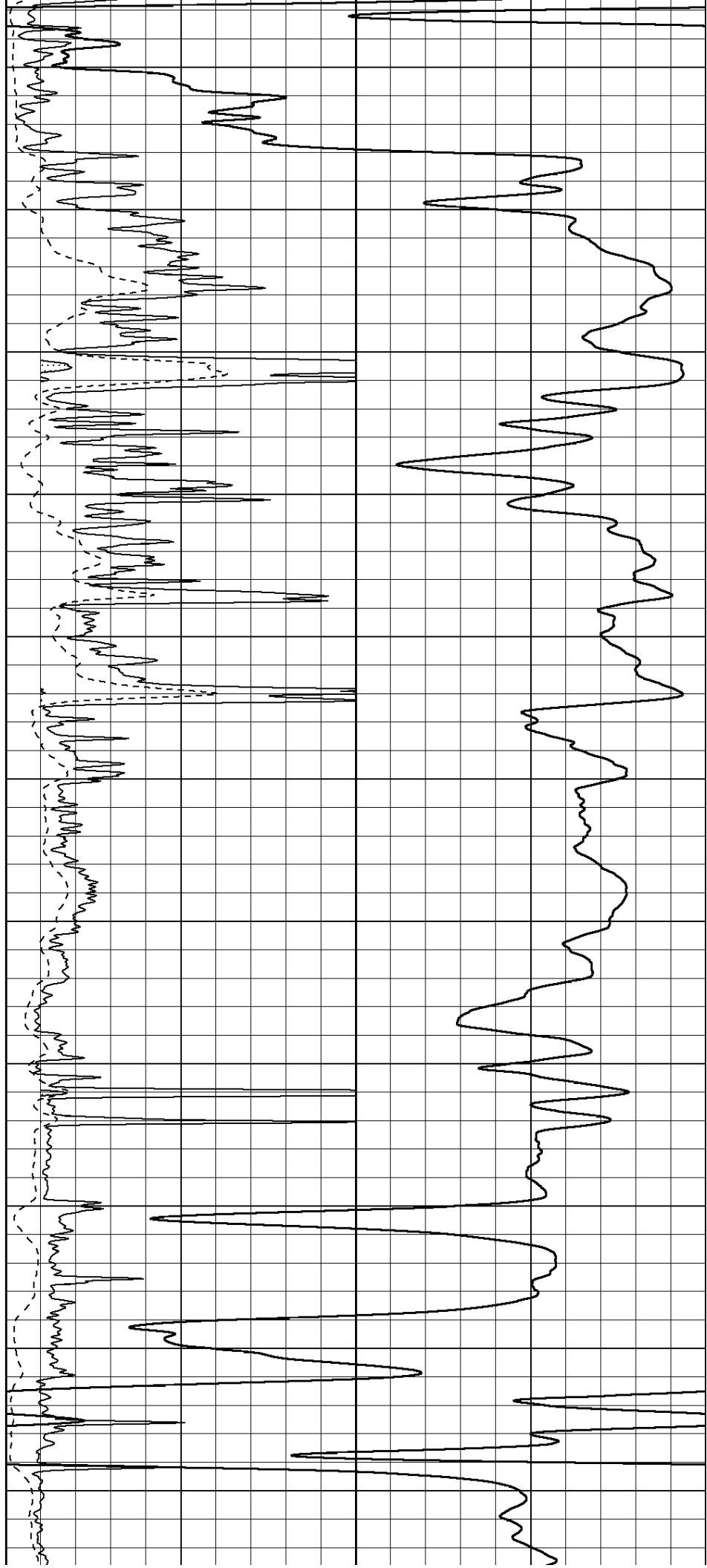
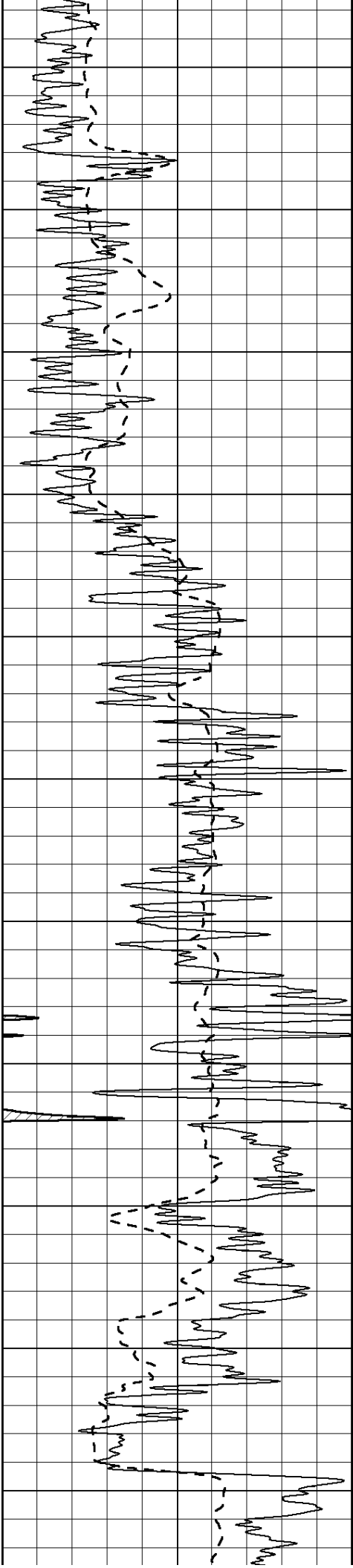
3050

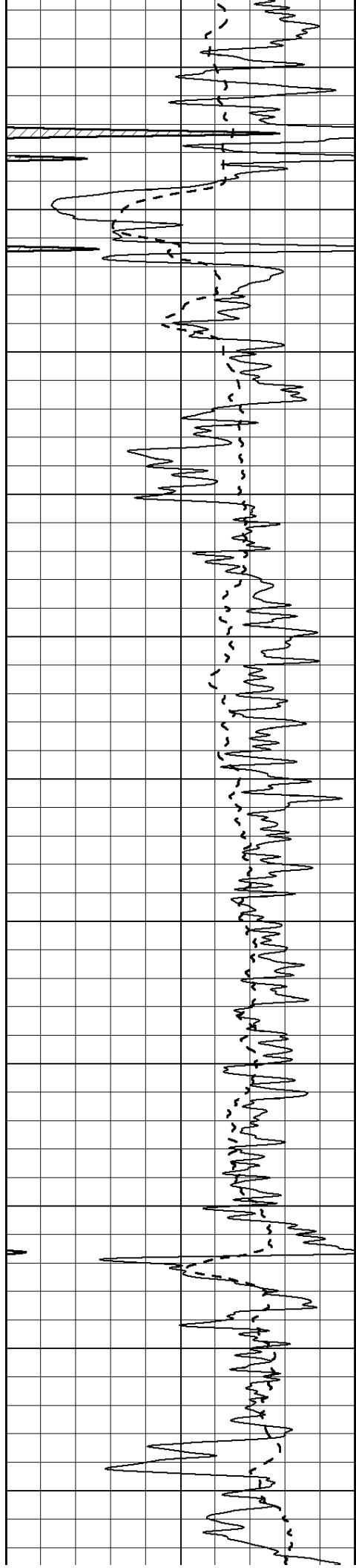
3100

3150



3200  
3250  
3300  
3350  
3400  
3450  
3500  
3550  
3600  
3650  
3700





3750

3800

3850

3900

3950

4000

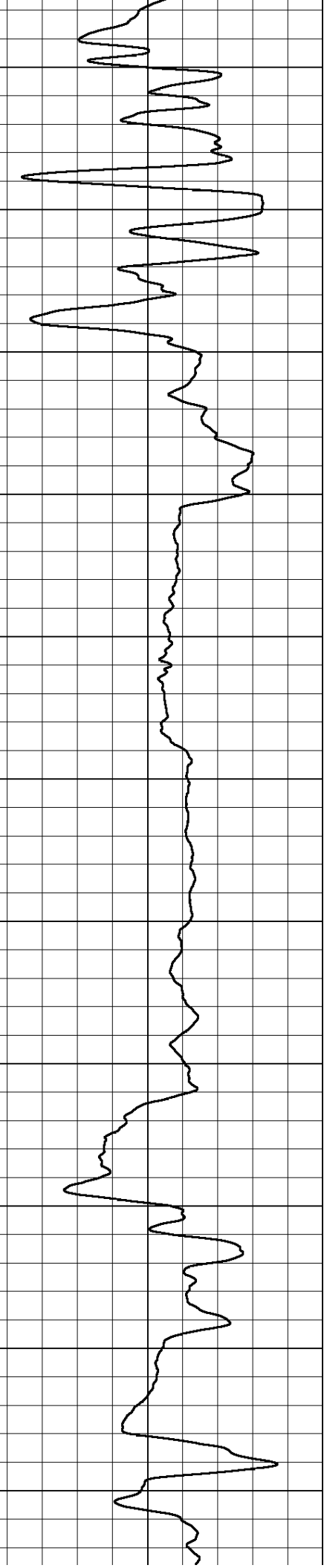
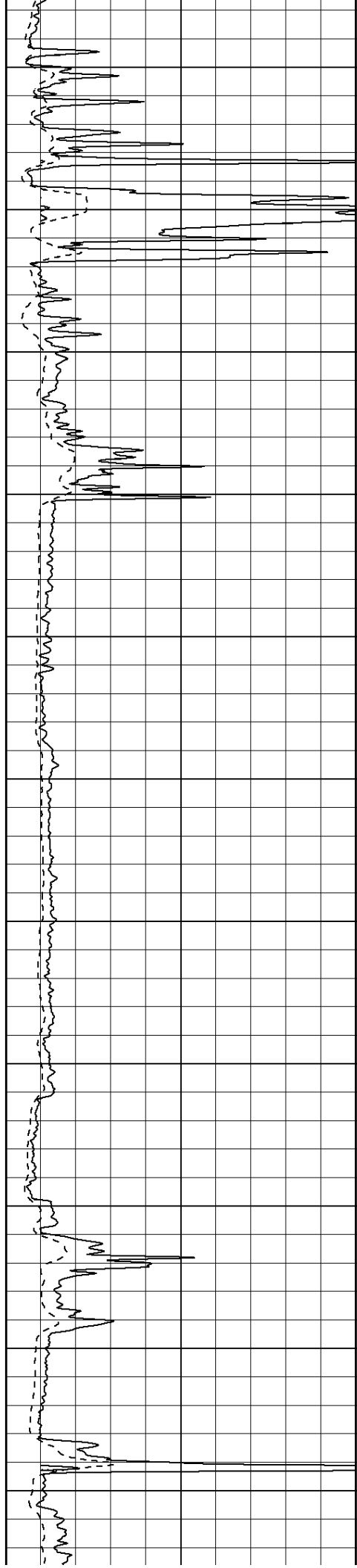
4050

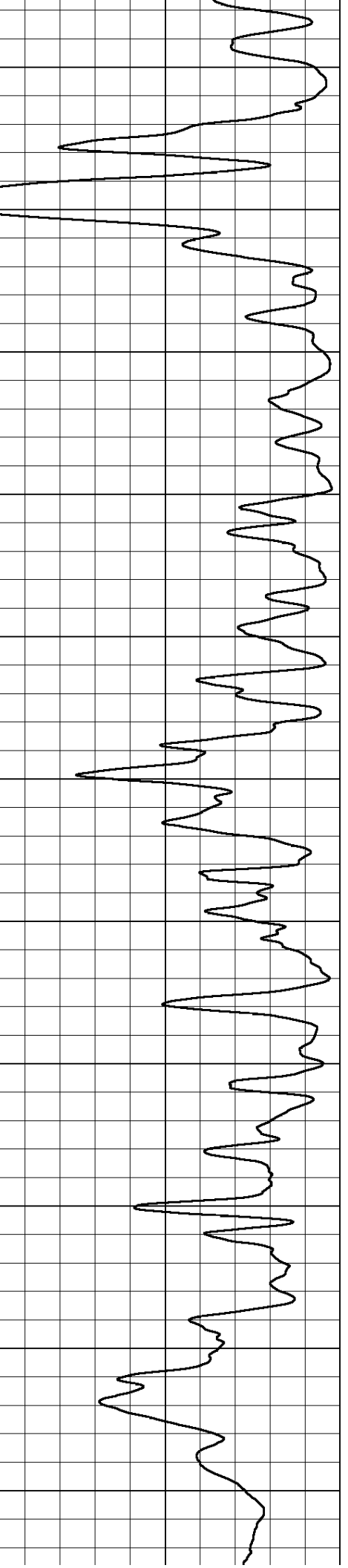
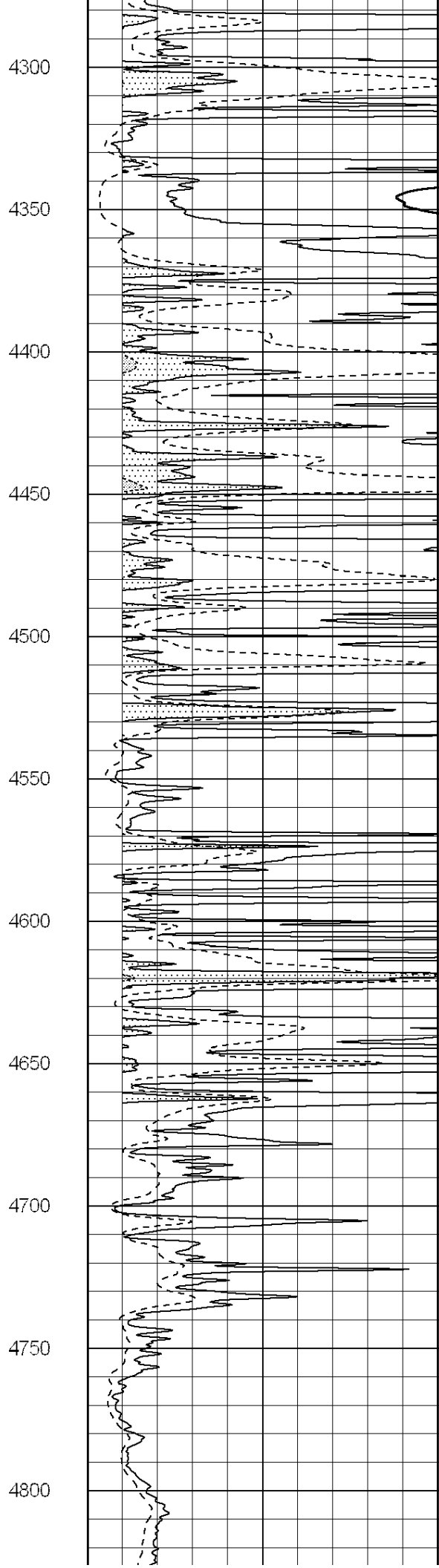
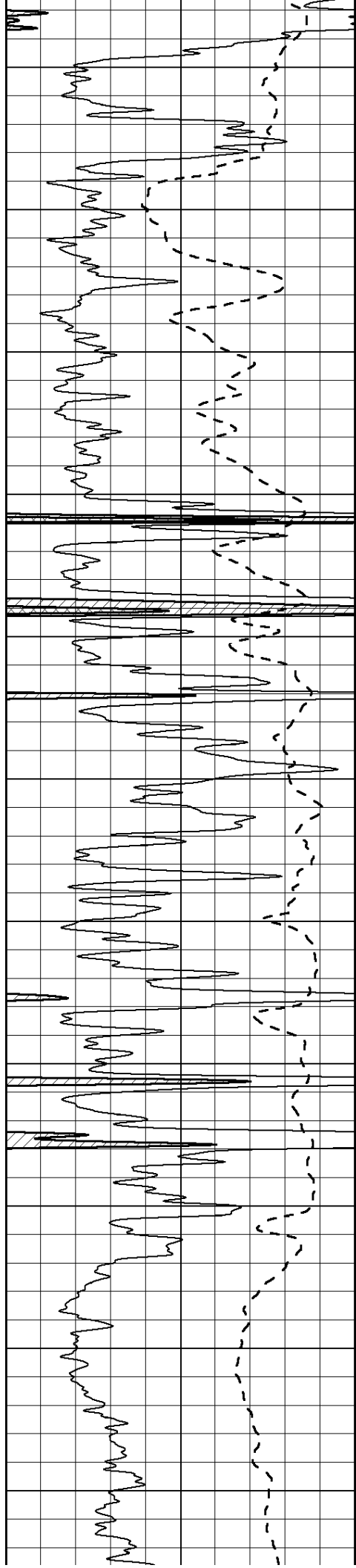
4100

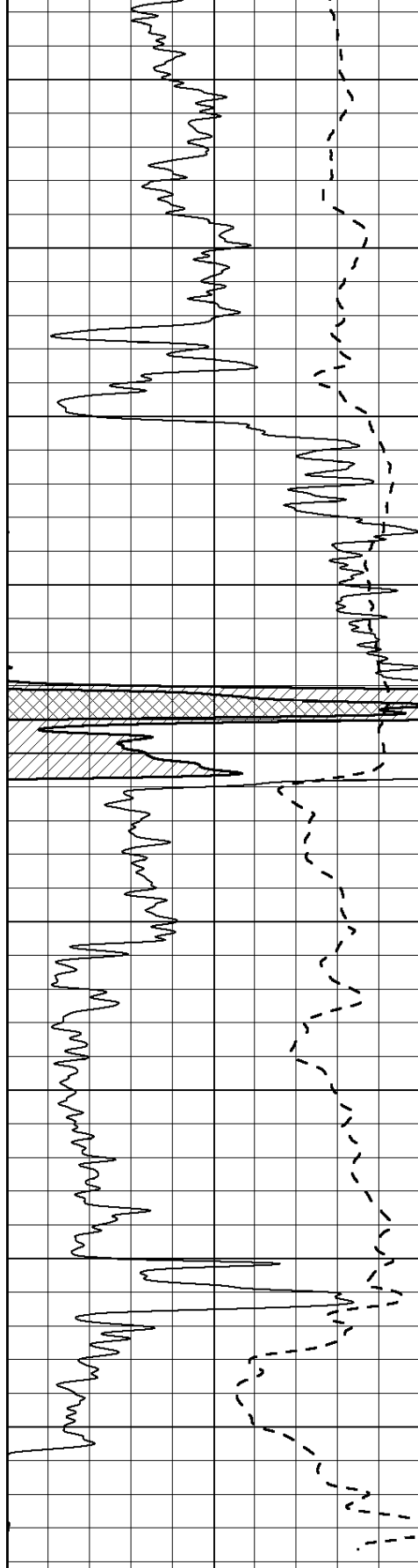
4150

4200

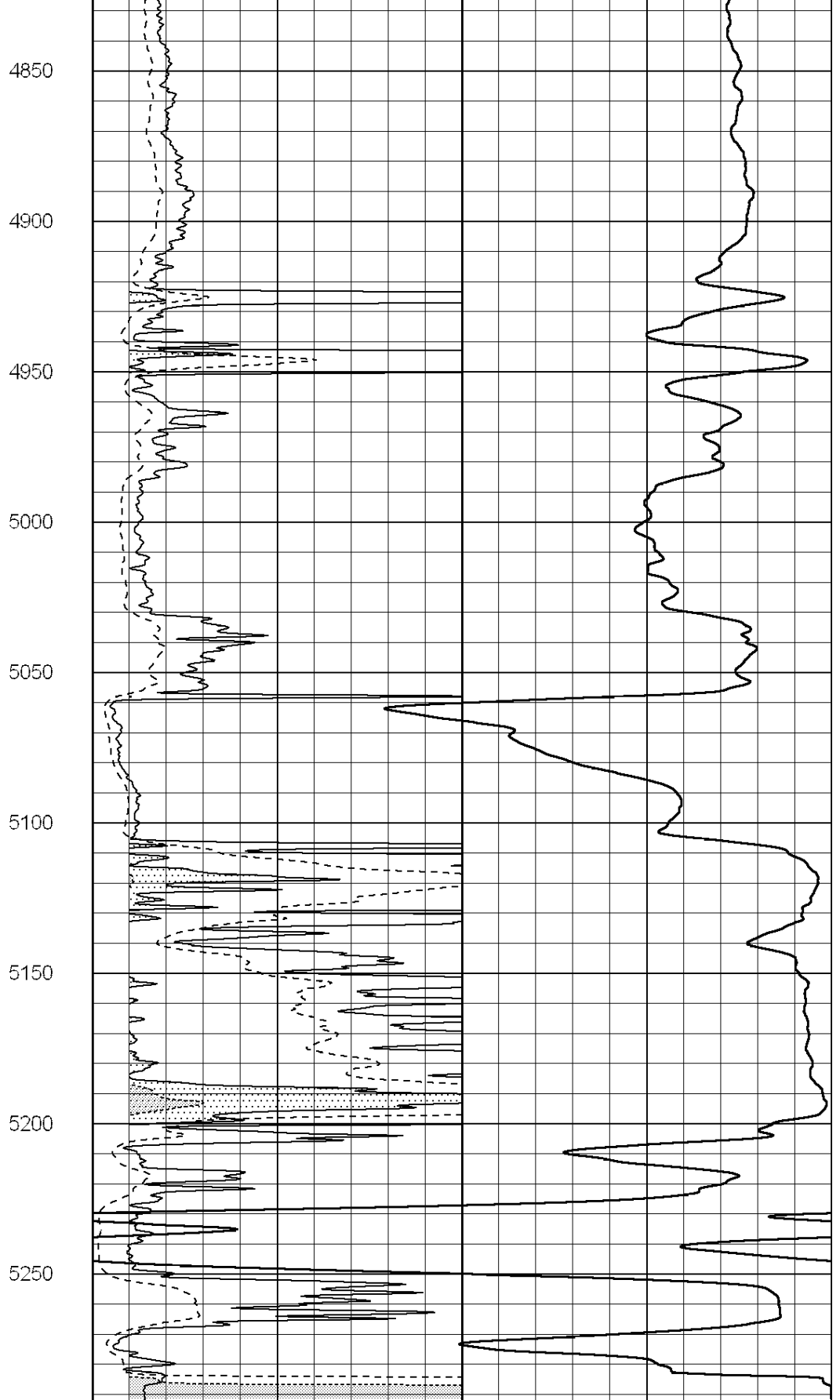
4250







0      Gamma Ray (GAPI)      150  
 -100      SP (mV)      100



0      RLL3 (Ohm-m)      50  
 0      RILD (Ohm-m)      50  
 1000      CILD (mmho/m)      0

50      RILD X10 (Ohm-m)      500  
 50      RLL3 X10 (Ohm-m)      500



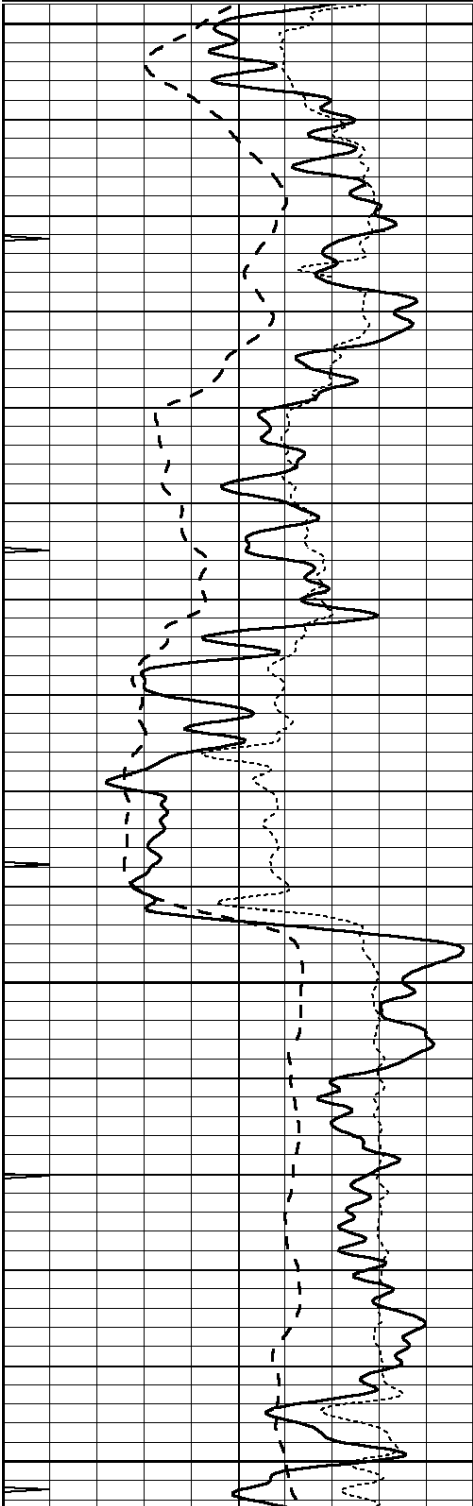
SUPERIOR  
Hays,  
Kansas

# MAIN SECTION

Database File: 005990pe.db  
Dataset Pathname: pass3.6  
Presentation Format: dil  
Dataset Creation: Thu Oct 07 21:44:10 2010 by Calc Open-Cased 090629  
Charted by: Depth in Feet scaled 1:240

0	GAMMA RAY (GAPI)	150
-100	SP (mV)	100
-250	Rxo/Rt	50
0	MINMK	10

0.2	SHALLOW GUARD (Ohm-m)	2000
0.2	DEEP INDUCTION (Ohm-m)	2000
0.2	MEDIUM INDUCTION (Ohm-m)	2000

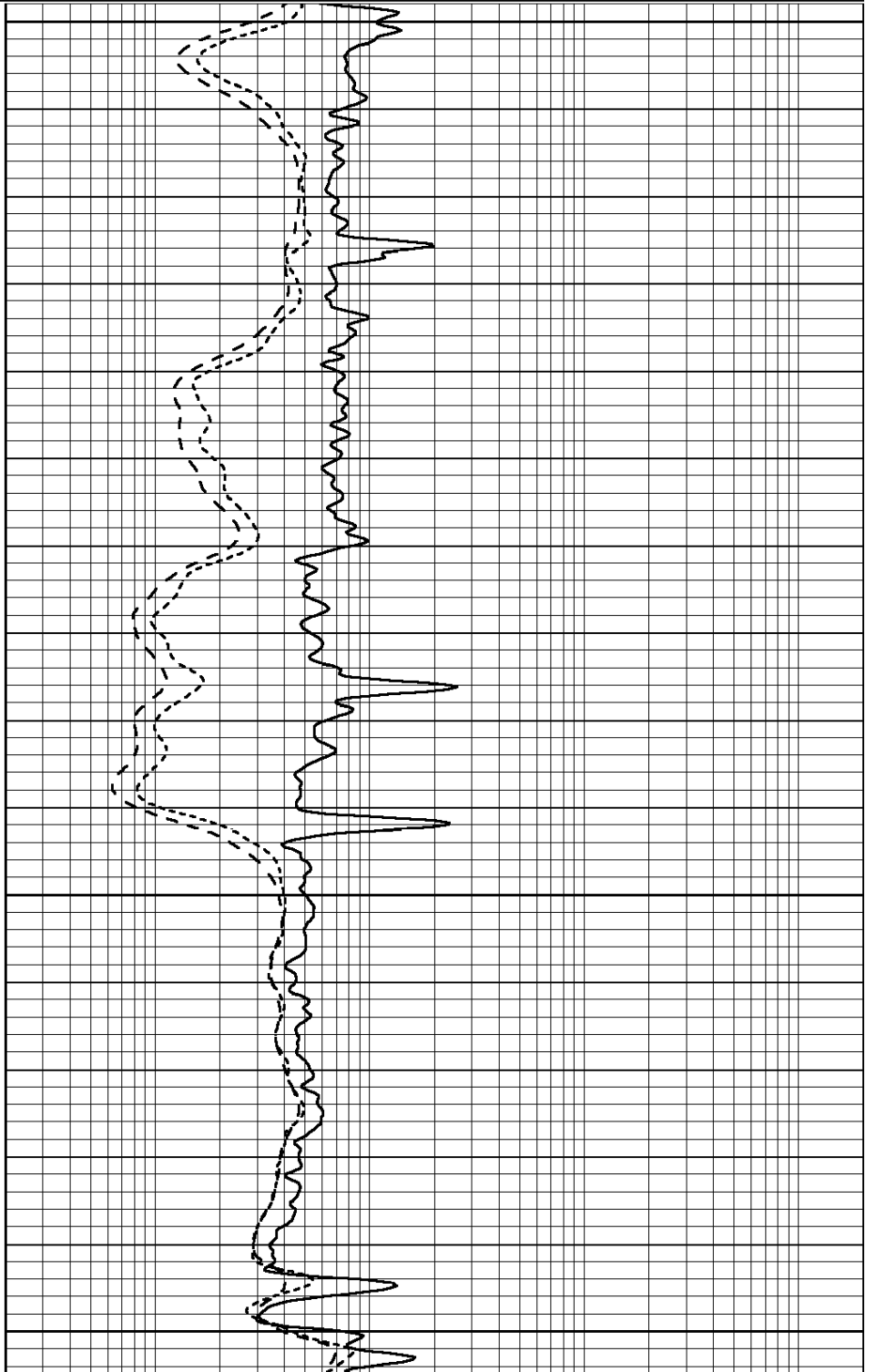


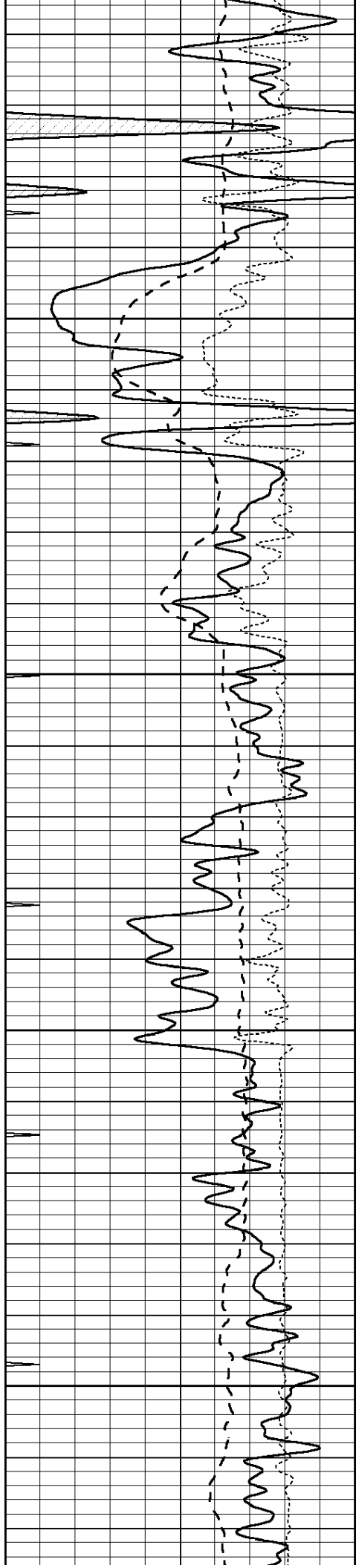
3600

3650

3700

3750



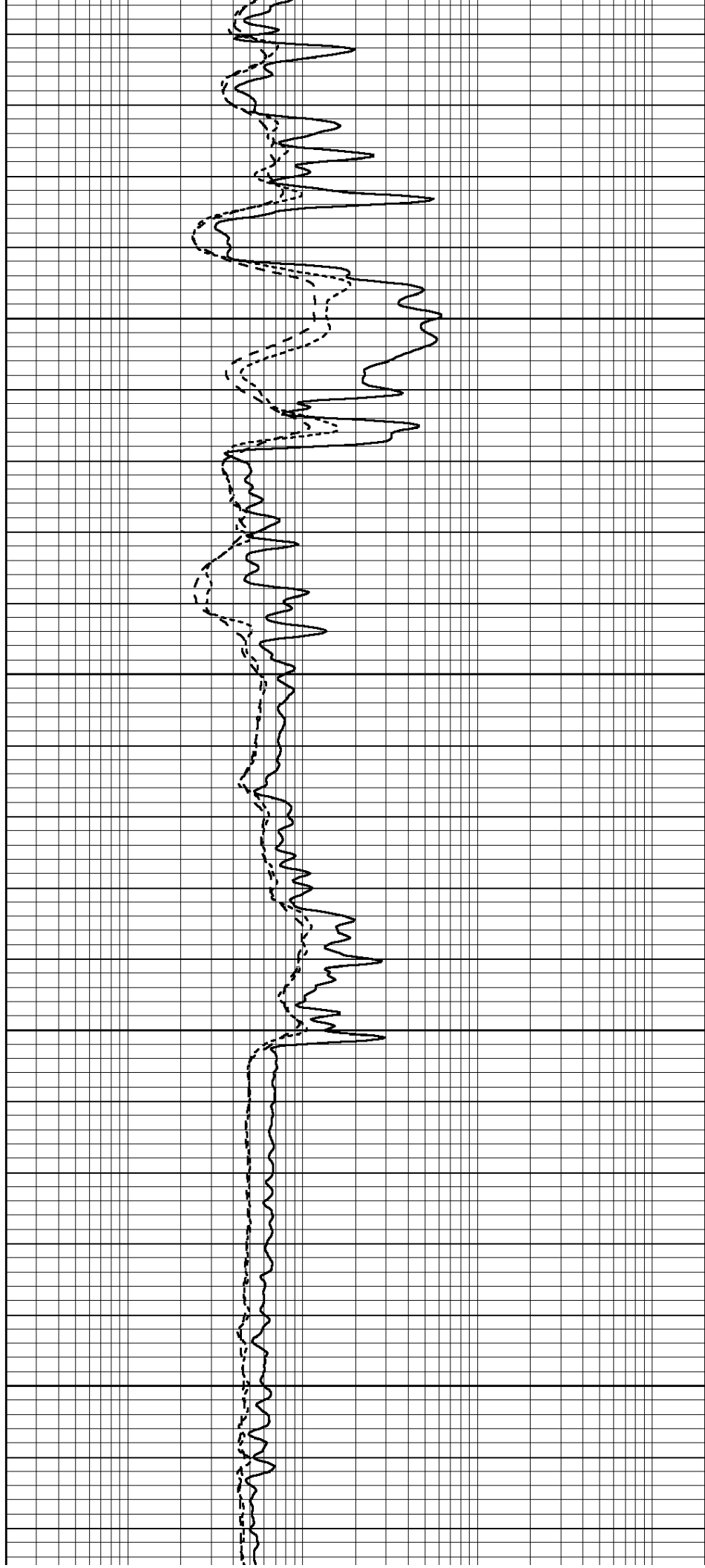


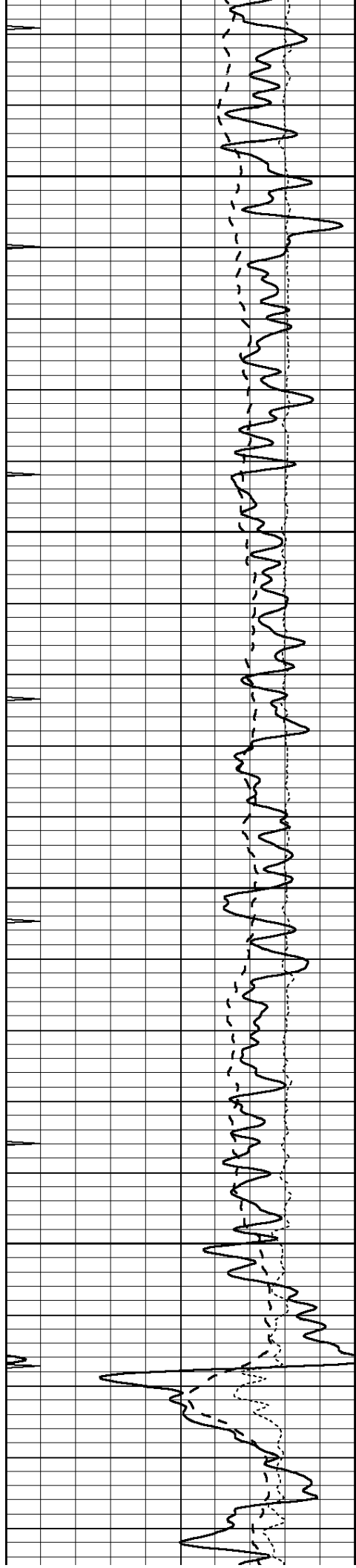
3800

3850

3900

3950



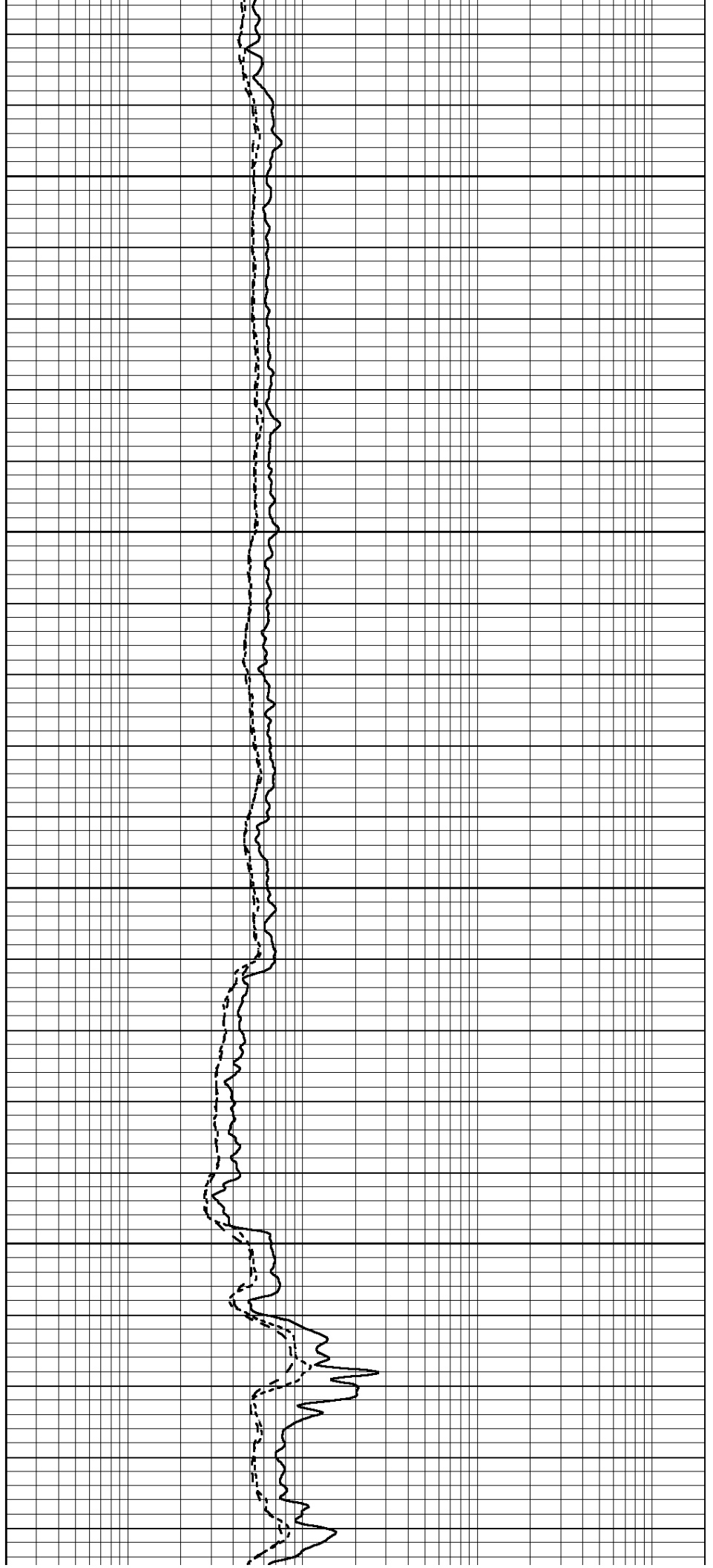


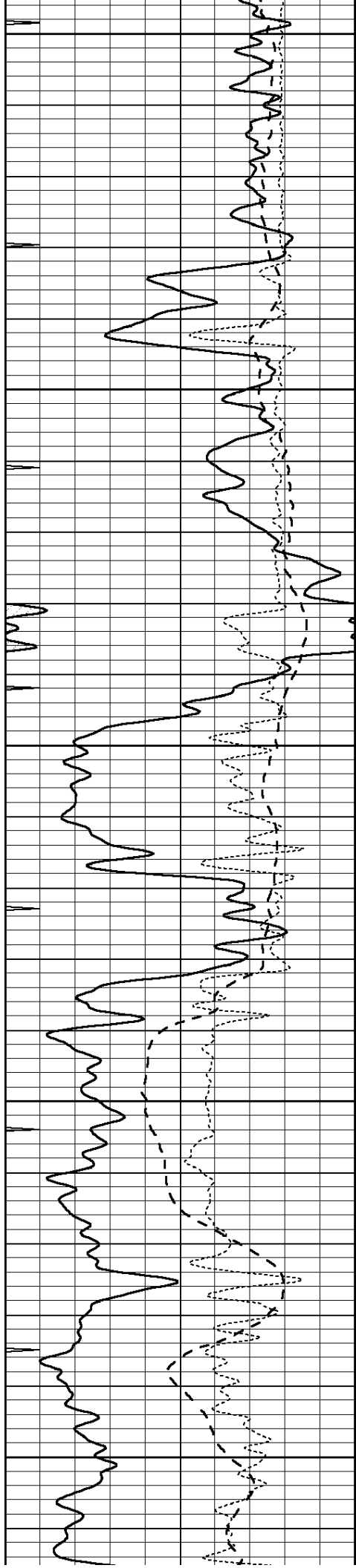
4000

4050

4100

4150





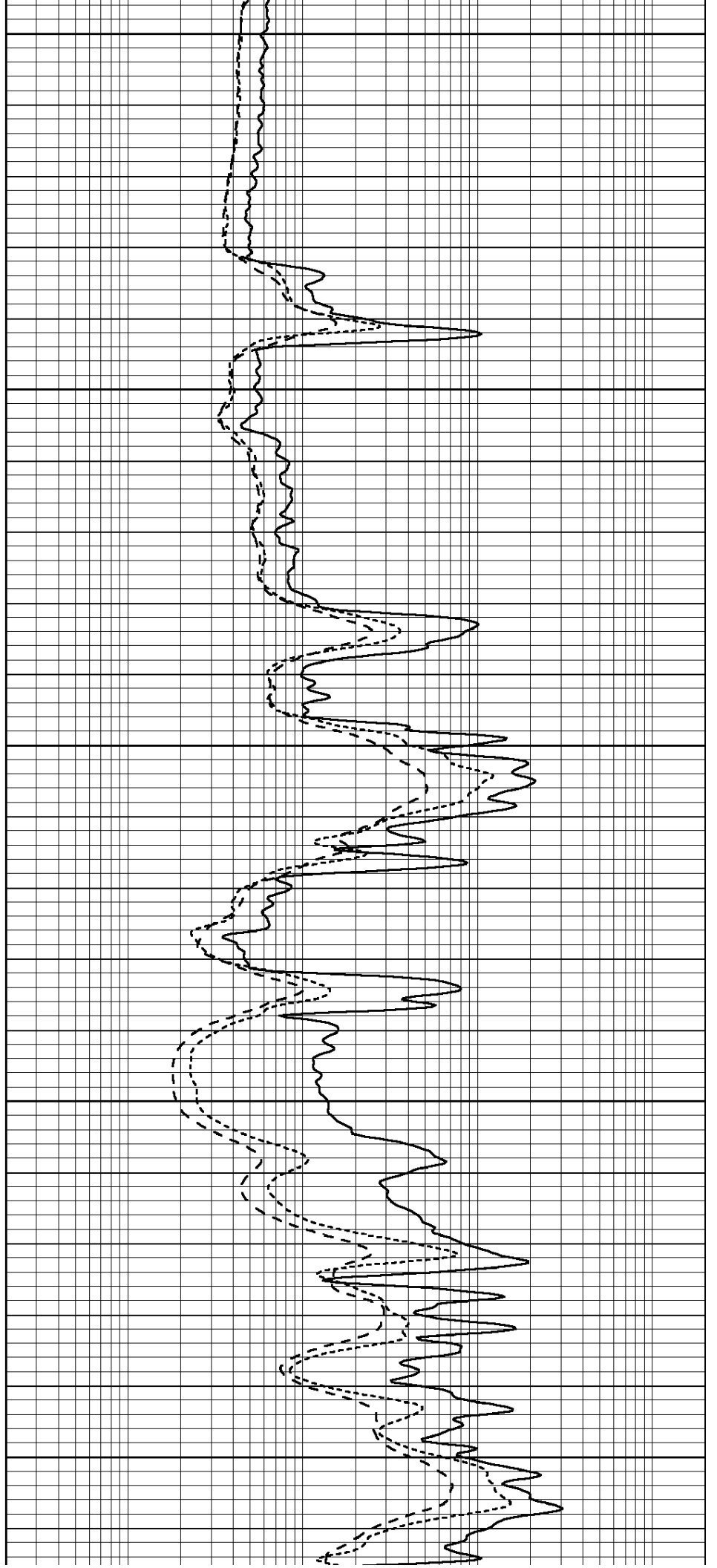
4200

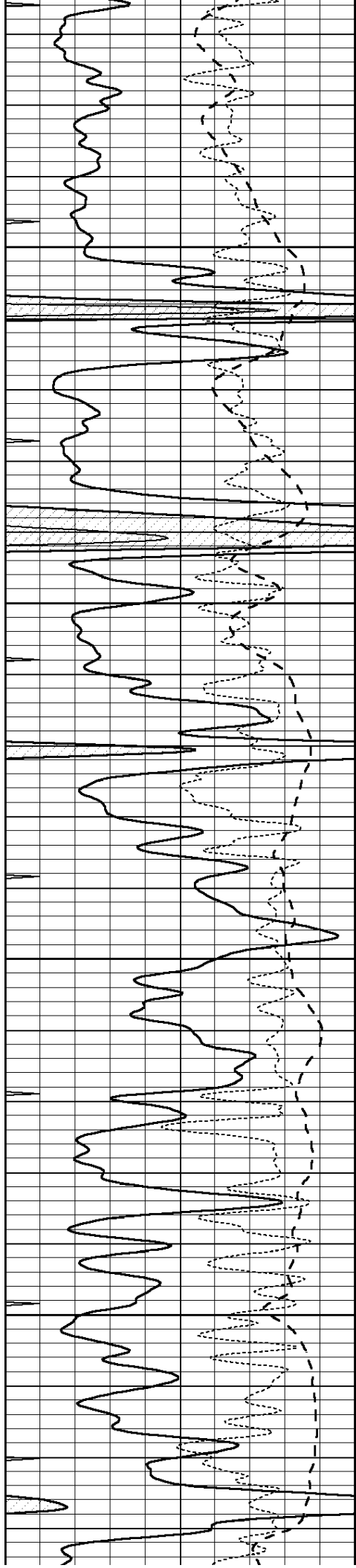
4250

4300

4350

4400



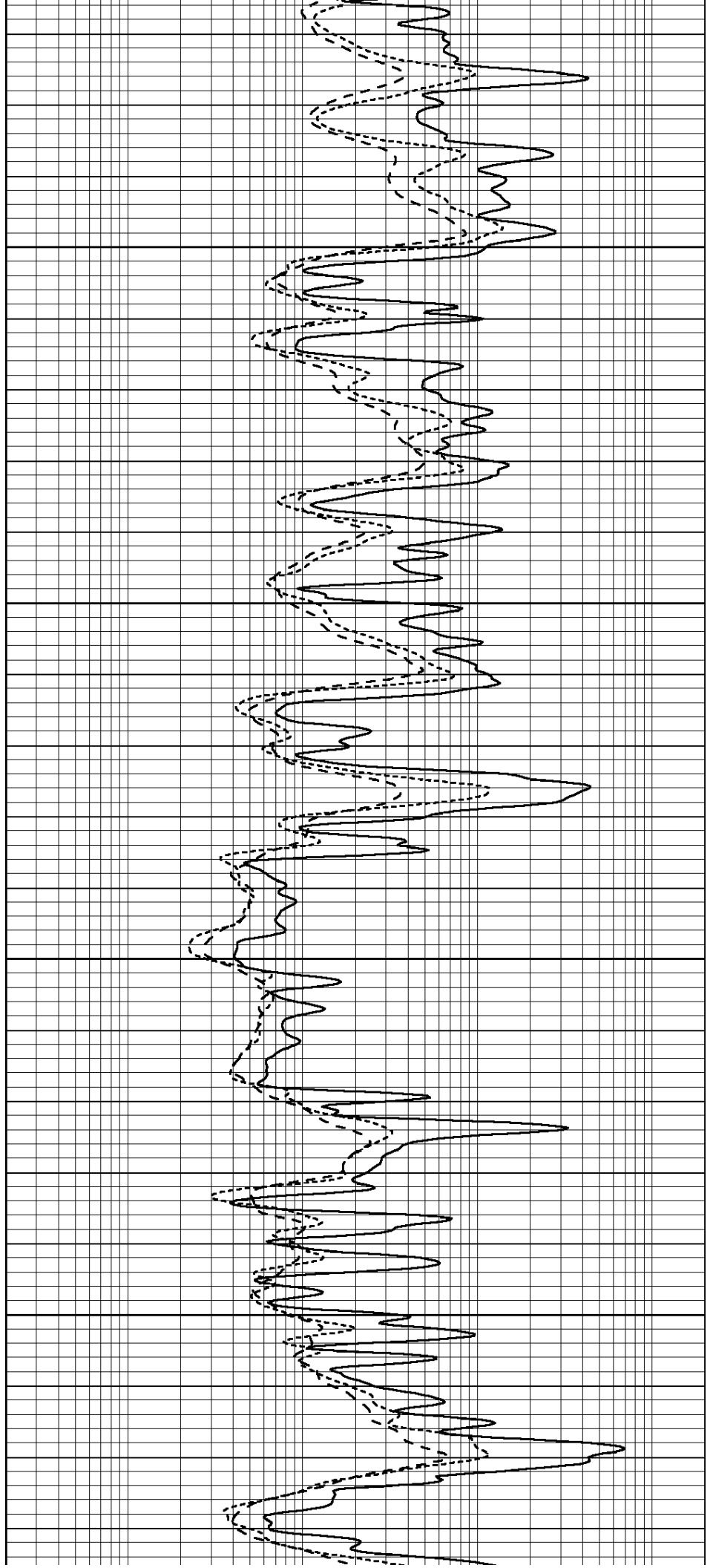


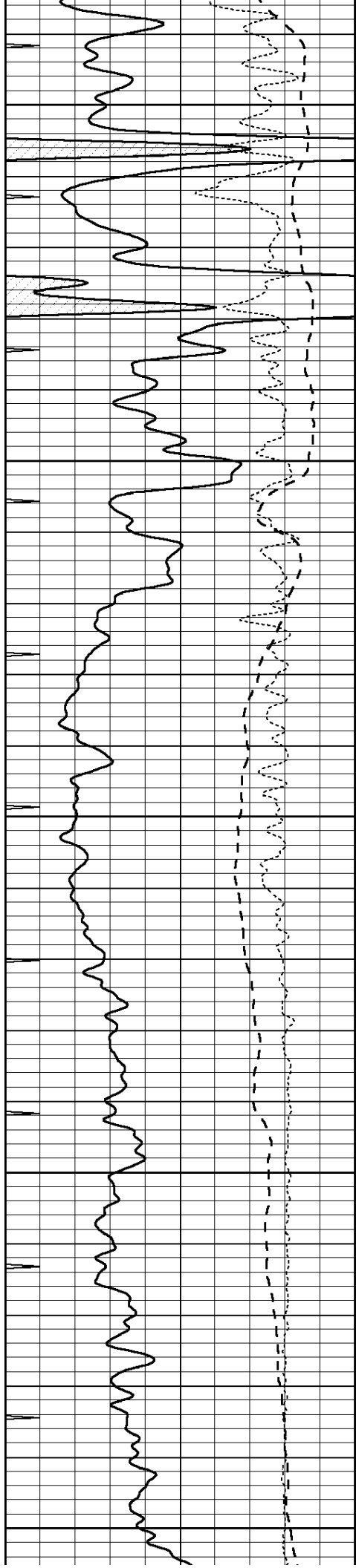
4450

4500

4550

4600





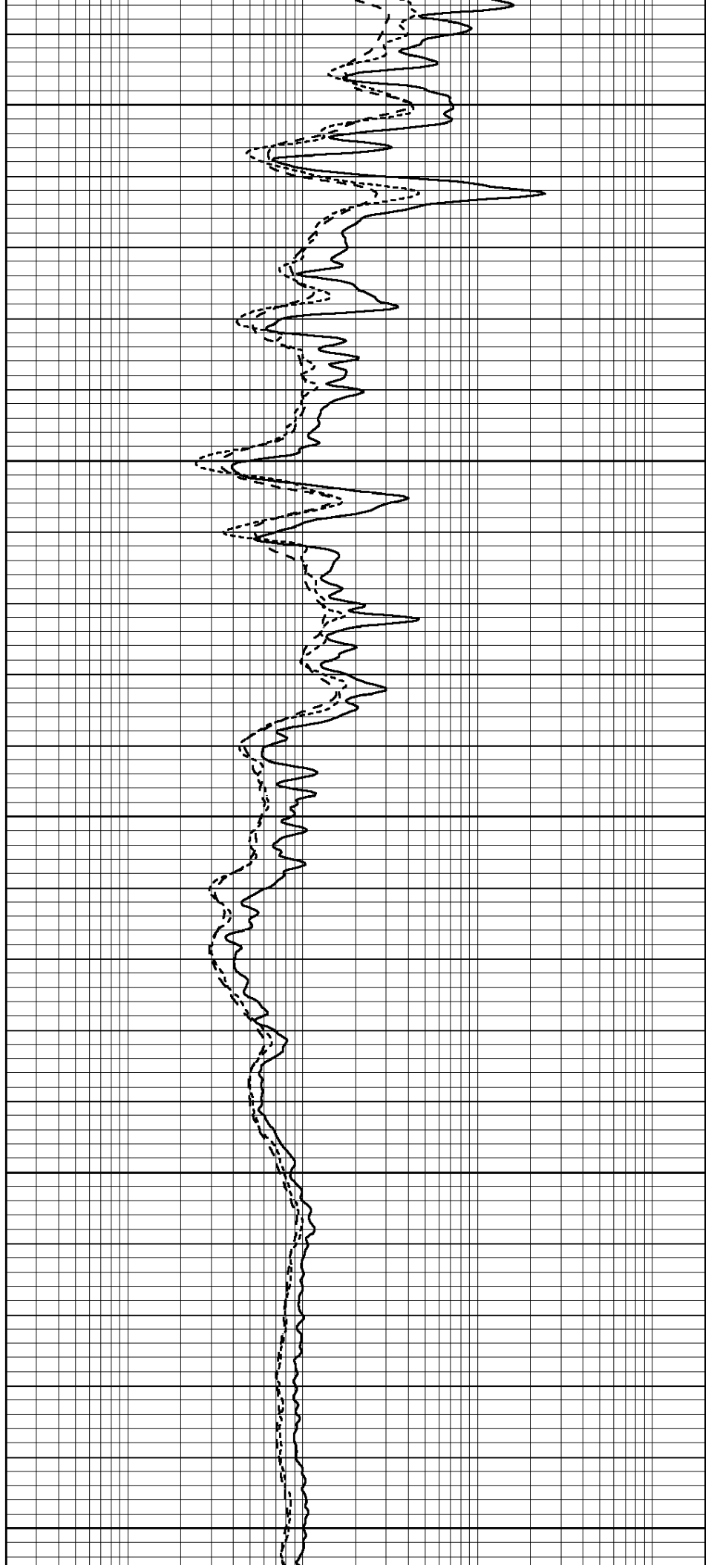
4650

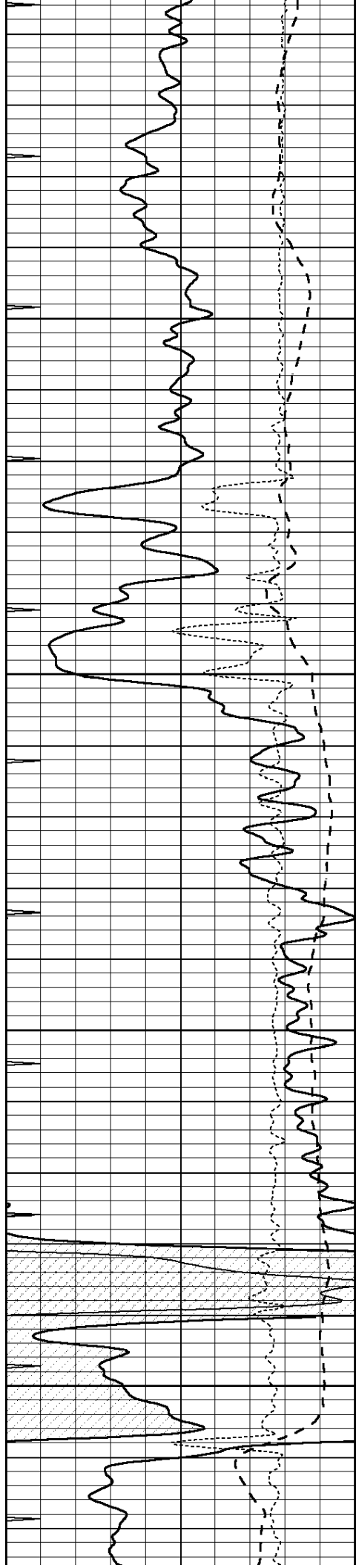
4700

4750

4800

4850



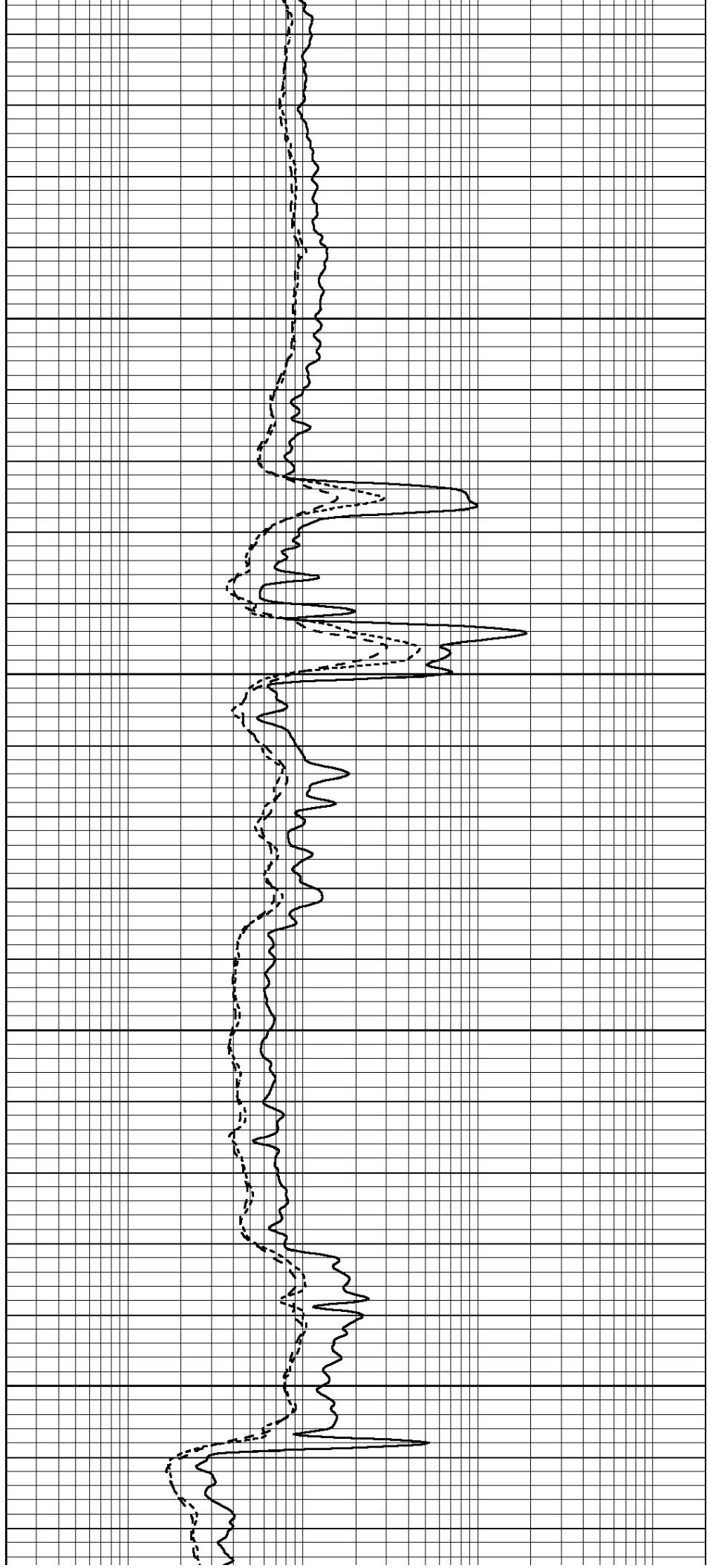


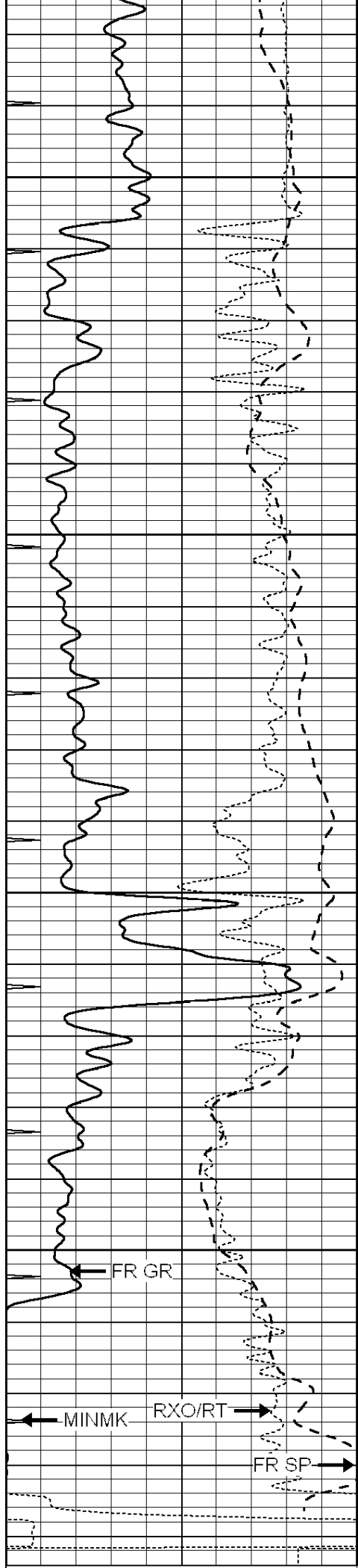
4900

4950

5000

5050





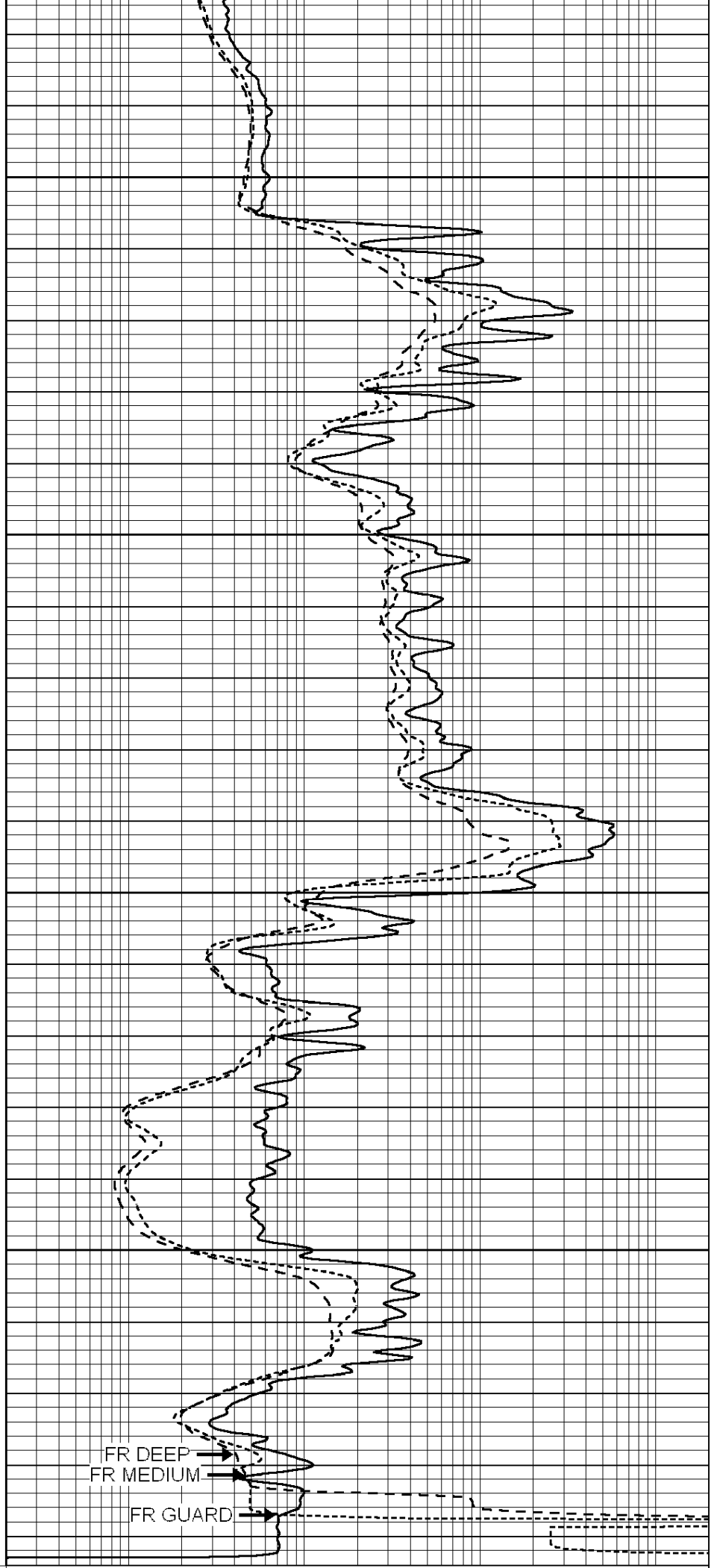
5100

5150

5200

5250

LTD 5290



0	GAMMA RAY (GAPI)	150
-100	SP (mV)	100
-250	Rxo/Rt	50
0	MINMK	10

0.2	SHALLOW GUARD (Ohm-m)	2000
0.2	DEEP INDUCTION (Ohm-m)	2000
0.2	MEDIUM INDUCTION (Ohm-m)	2000



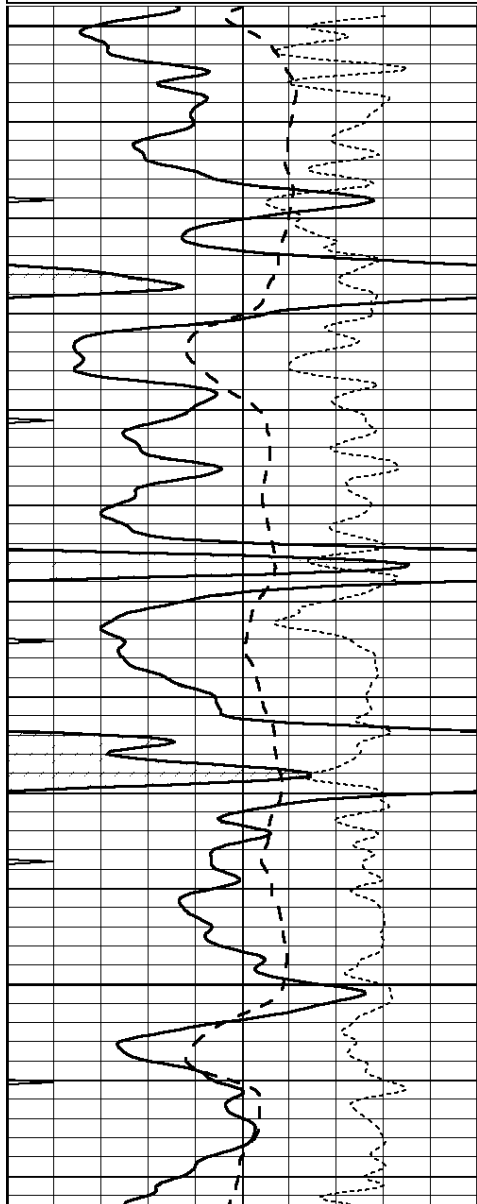
SUPERIOR  
Hays,  
Kansas

# REPEAT SECTION

Database File: 005990pe.db  
 Dataset Pathname: pass2.4  
 Presentation Format: dil  
 Dataset Creation: Thu Oct 07 20:48:12 2010 by Calc Open-Cased 090629  
 Charted by: Depth in Feet scaled 1:240

0	GAMMA RAY (GAPI)	150
-100	SP (mV)	100
-250	Rxo/Rt	50
0	MINMK	10

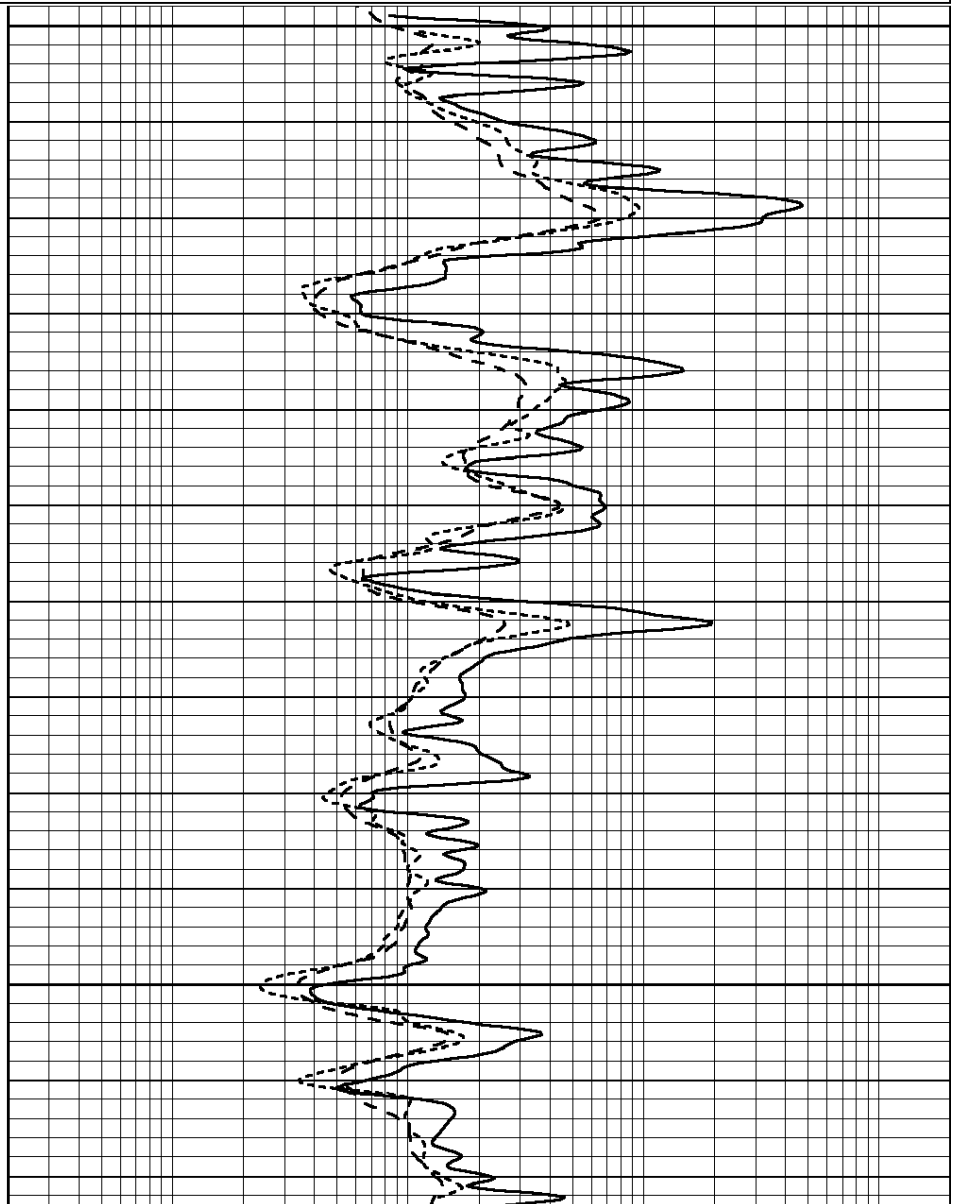
0.2	SHALLOW GUARD (Ohm-m)	2000
0.2	DEEP INDUCTION (Ohm-m)	2000
0.2	MEDIUM INDUCTION (Ohm-m)	2000

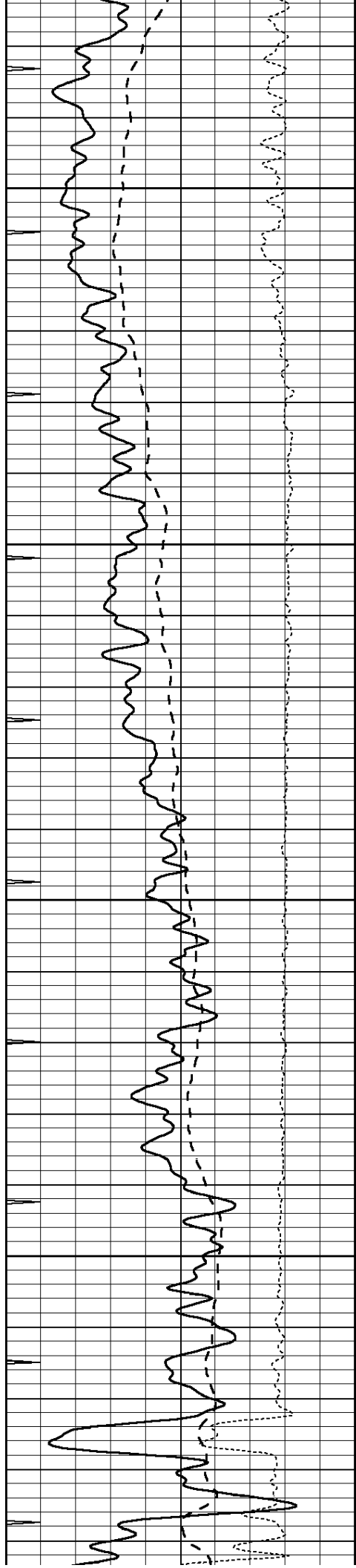


4600

4650

4700



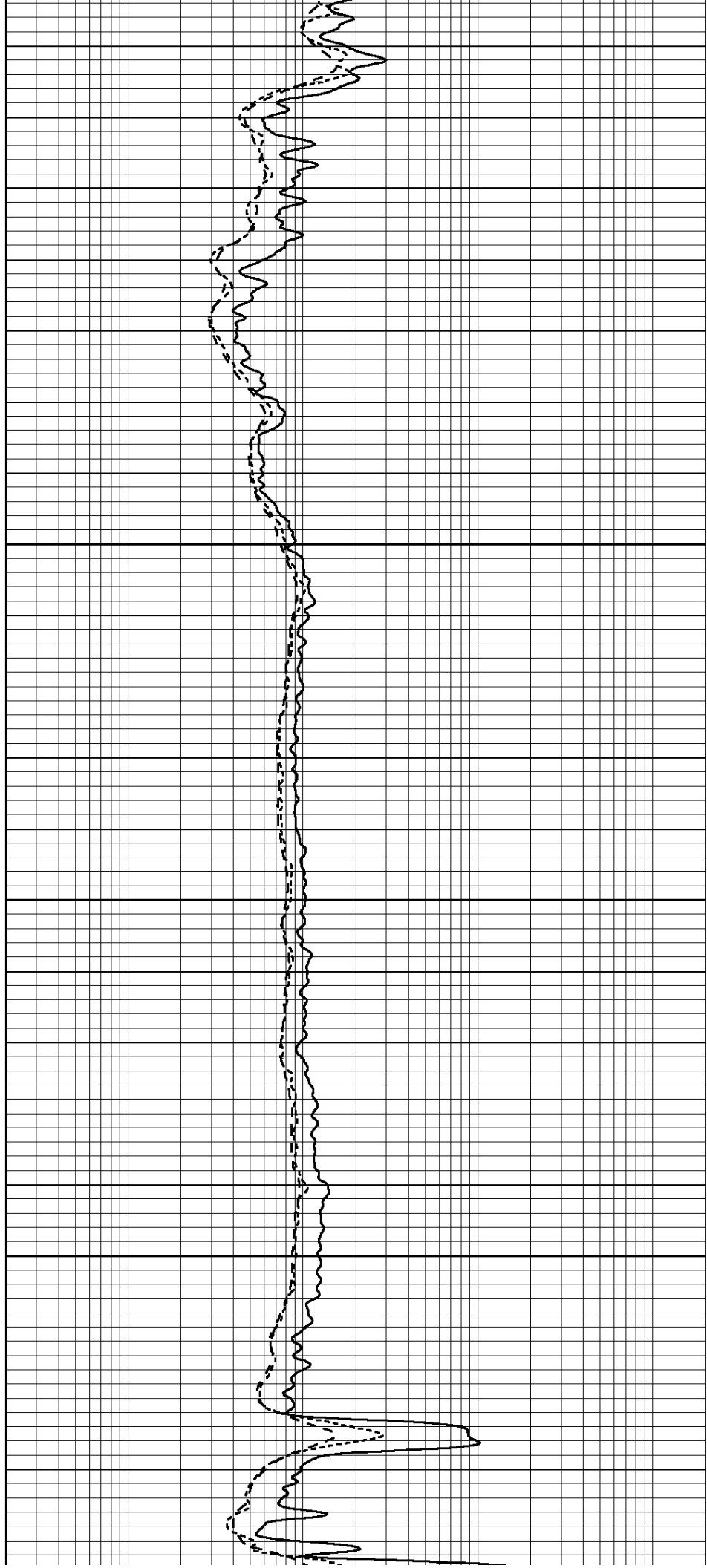


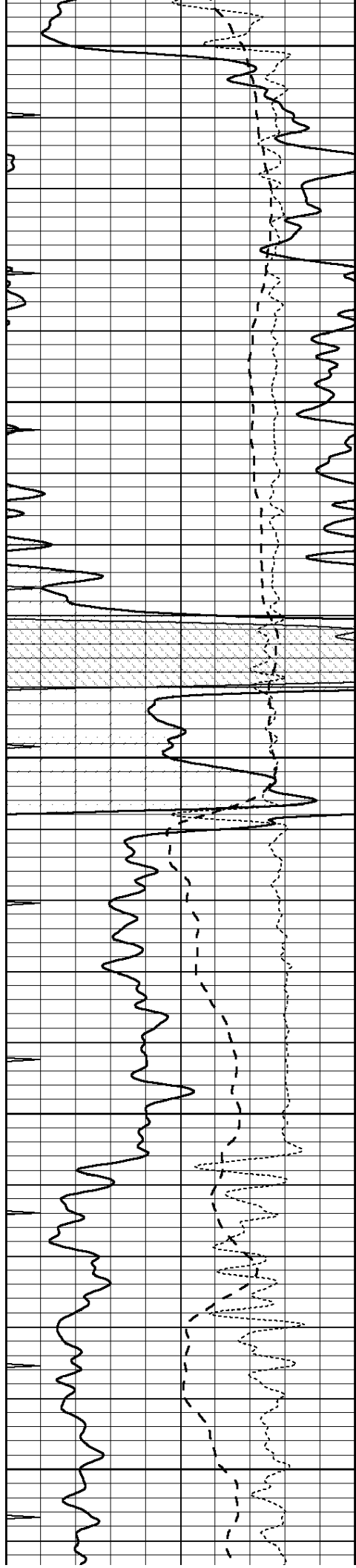
4750

4800

4850

4900





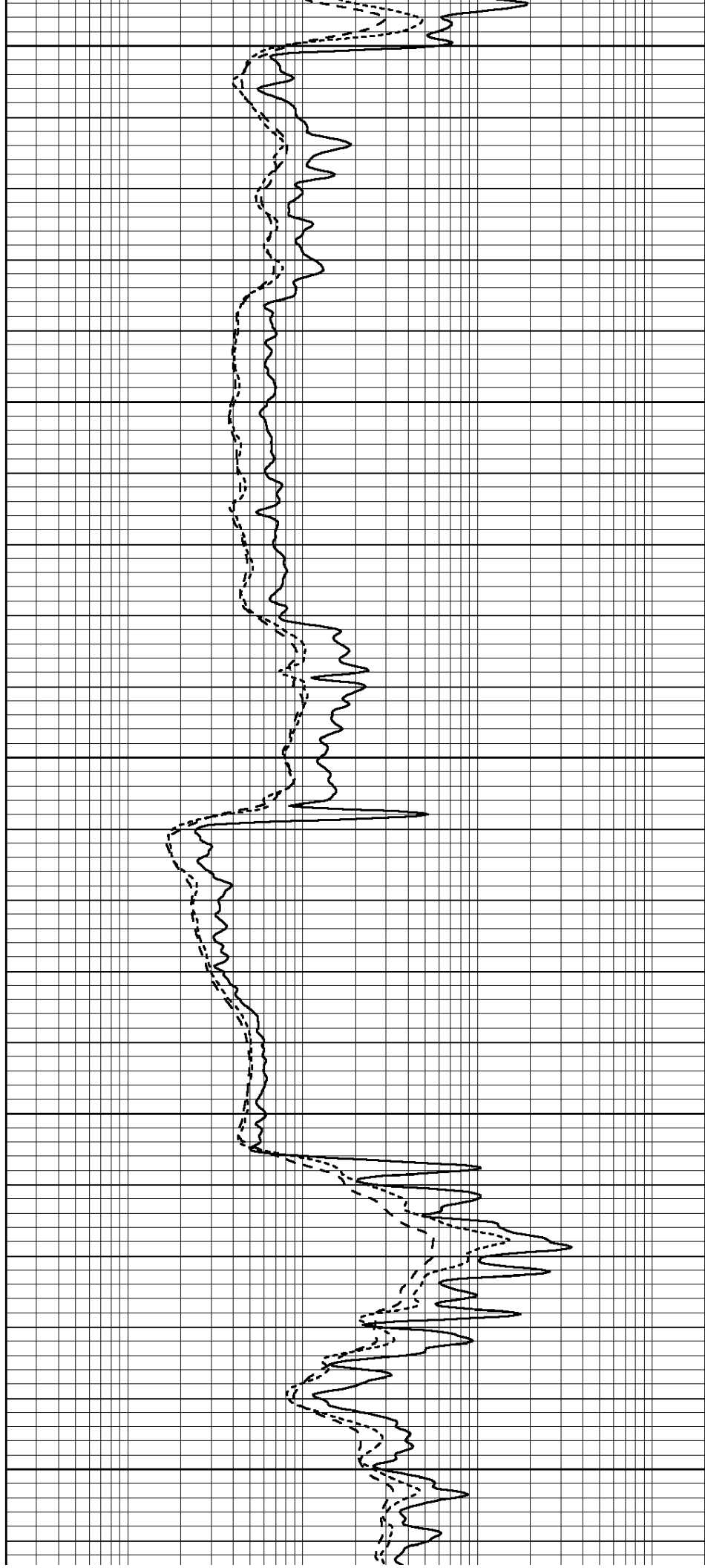
4950

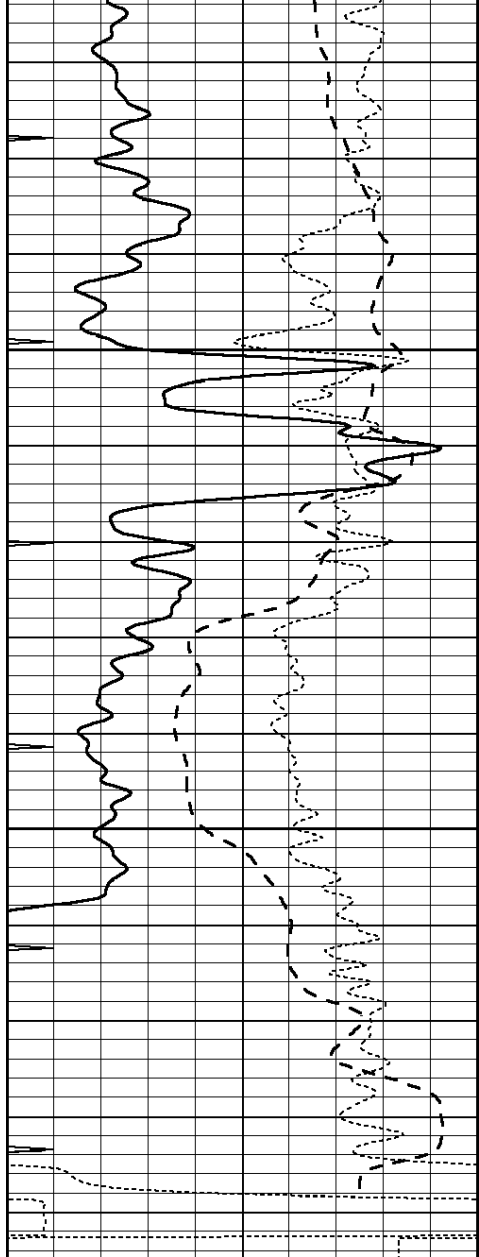
5000

5050

5100

5150

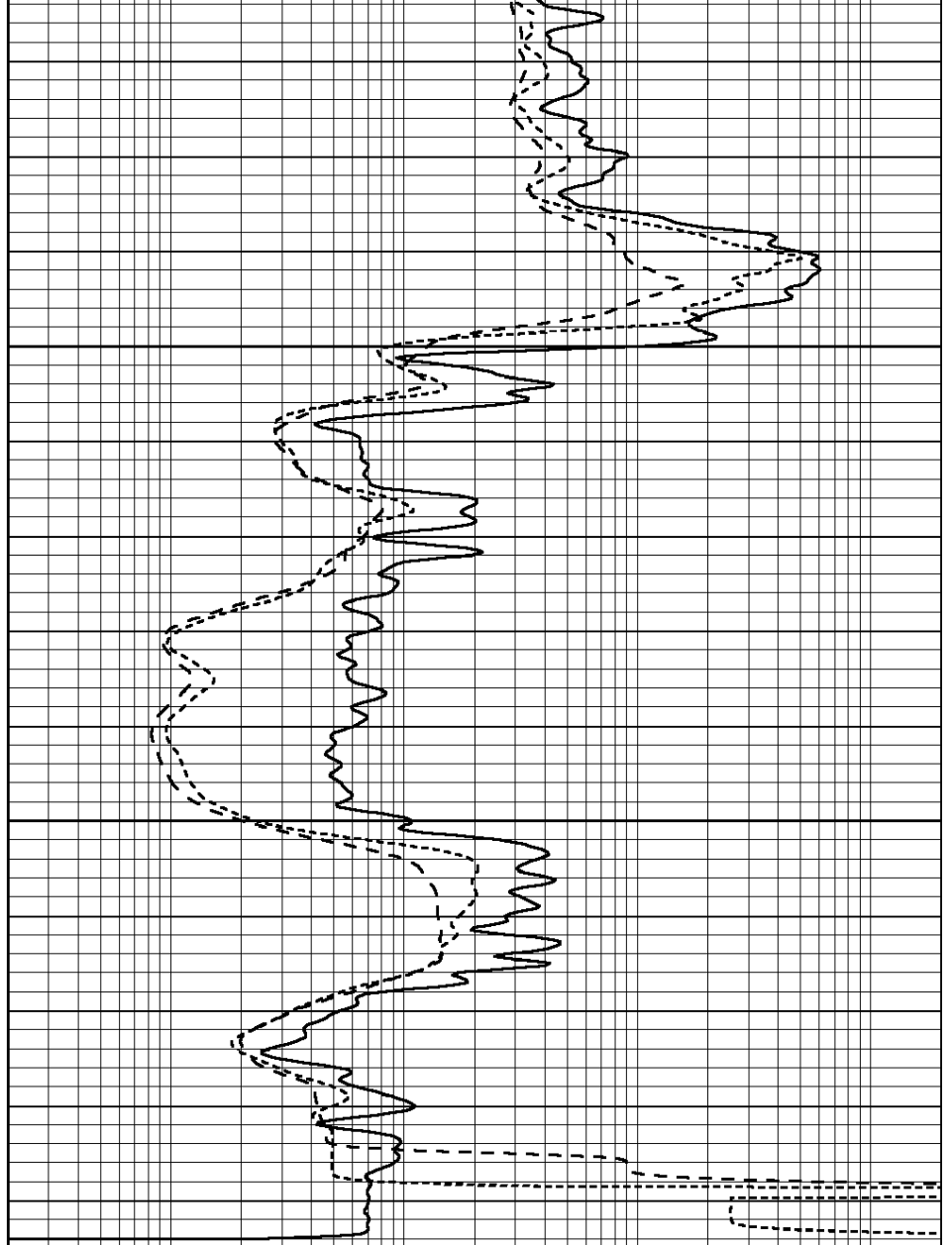




0	GAMMA RAY (GAPI)	150
-100	SP (mV)	100
-250	Rxo/Rt	50
0	MINMK	10

5200

5250



0.2	SHALLOW GUARD (Ohm-m)	2000
0.2	DEEP INDUCTION (Ohm-m)	2000
0.2	MEDIUM INDUCTION (Ohm-m)	2000

### Calibration Report

Database File: 005990pe.db  
 Dataset Pathname: pass3.6  
 Dataset Creation: Thu Oct 07 21:44:10 2010 by Calc Open-Cased 090629

### Dual Induction Calibration Report

Serial-Model: DIL3-GEAR  
 Performed: Thu Oct 07 17:54:37 2010

Loop:	Readings			References			Results	
	Air	Loop		Air	Loop		m	b
Deep	0.011	0.656	V	0.000	400.000	mmho/m	640.000	0.000
Medium	0.013	0.740	V	0.000	462.500	mmho/m	700.000	-14.000
Internal:	Zero	Cal		Zero	Cal		m	b

Deep	0.002	0.645	V	0.000	400.000	mmho/m	622.059	-1.071
Medium	0.007	0.740	V	0.000	462.500	mmho/m	631.393	-4.555

Litho Density Calibration Report  
Serial: 006    Model: PRB  
Performed Sun Aug 15 09:48:41 2010

Litho Density Calibration

	Background	Magnesium	Aluminum	Sandstone	
Window 1	1686.6	11612.8	3932.0	12718.8	cps
Window 2	1531.4	9204.7	3267.8	9851.9	cps
Window 3	1198.3	4733.6	1952.5	4920.6	cps
Window 4	317.3	321.2	325.9	303.6	cps
Long Space	0.0	7673.3	1736.4	8320.4	cps
Short Space	1.7	2548.5	1657.2	2628.8	cps
Rho		1.7100	2.5900	1.3800	g/cc
Pe			2.5700	1.5500	
Rib Angle	: 43.8	Rib Slope	: 0.961	Density/Spine Ratio	: 0.569
Spine Angle	: 73.8	Spine Slope	: 3.453	Spine Intercept	: -18.1

Caliper

	Readings	Reference	
Low Ref	3.2	6.5	
High Ref	6.2	14.0	
Gain: 2.4			Offset: -1.3

Compensated Neutron Calibration Report

Serial Number:    NEU\_3I  
Tool Model:        G

CALIBRATION

Detector	Readings	Target	Normalization
Short Space	997.00 cps	1000.00 cps	1.0000
Long Space	986.00 cps	1000.00 cps	1.0000

Gamma Ray Calibration Report

Serial Number:    GR4  
Tool Model:        OPEN  
Performed:        Thu Oct 07 19:58:59 2010

Calibrator Value:    200.0            GAPI

Background Reading:    0.0                cps  
Calibrator Reading:    189.0             cps

Sensitivity:            0.7000            GAPI/cps