

**SUPERIOR
Hays,
Kansas**

**COMPENSATED
DENSITY / NEUTRON
PE LOG**

Company MULL DRILLING CO., INC.
Well HINEMAN TRUST #1-6
Field
County LANE
State KANSAS

Company MULL DRILLING COMPANY, INC.
Well HINEMAN TRUST #1-6
Field
County LANE State KANSAS

Location: API #: 15-101-22260
1724' FSL & 1718' FEL
SEC 6 TWP 19S RGE 28W
Permanent Datum GROUND LEVEL Elevation 2781
Log Measured From KELLY BUSHING 9' A.G.L.
Drilling Measured From KELLY BUSHING
Other Services
DIL
SONIC/MEL
Elevation
K.B. 2790
D.F.
G.L. 2781

Date	10-22-10
Run Number	ONE
Depth Driller	4700
Depth Logger	4702
Bottom Logged Interval	4678
Top Log Interval	3700
Casing Driller	230
Casing Logger	228
Bit Size	7.875
Type Fluid in Hole	CHEMICAL MUD
Density / Viscosity	9.3 / 52
pH / Fluid Loss	7.2 / 10.5
Source of Sample	FLOWLINE
Rm @ Meas. Temp	1.10 @ 85F
Rmf @ Meas. Temp	0.83 @ 85F
Rmc @ Meas. Temp	1.32 @ 85F
Source of Rmf / Rmc	MEASURED
Rm @ BHT	.770 @ 122F
Time Circulation Stopped	3 HOURS
Time Logger on Bottom	10:15 A.M.
Maximum Recorded Temperature	122F
Equipment Number	860
Location	HAYS, KS.
Recorded By	RUPP
Witnessed By	KEVIN KESSLER

<<< Fold Here >>>

All interpretations are opinions based on inferences from electrical or other measurements and we cannot and do not guarantee the accuracy or correctness of any interpretation, and we shall not, except in the case of gross or willful negligence on our part, be liable or responsible for any loss, costs, damages, or expenses incurred or sustained by anyone resulting from any interpretation made by any of our officers, agents or employees. These interpretations are also subject to our general terms and conditions set out in our current Price Schedule.

Comments

SUPERIOR WELL SERVICES
785-628-6395
THANK YOU FOR YOUR BUSINESS
DIRECTIONS: DIGHTON, 3S TO 120TH RD., 1E, 1S, W INTO.

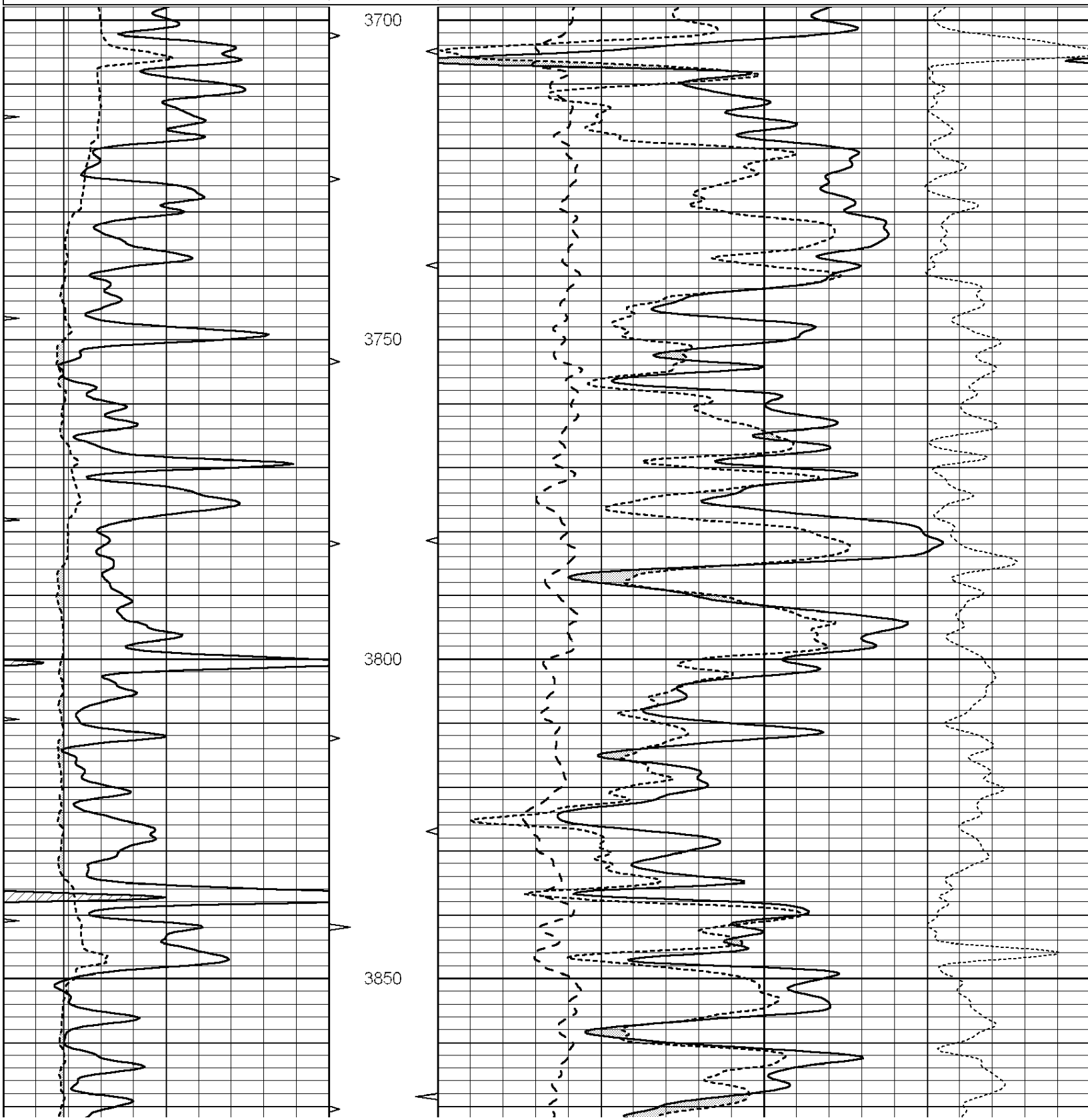


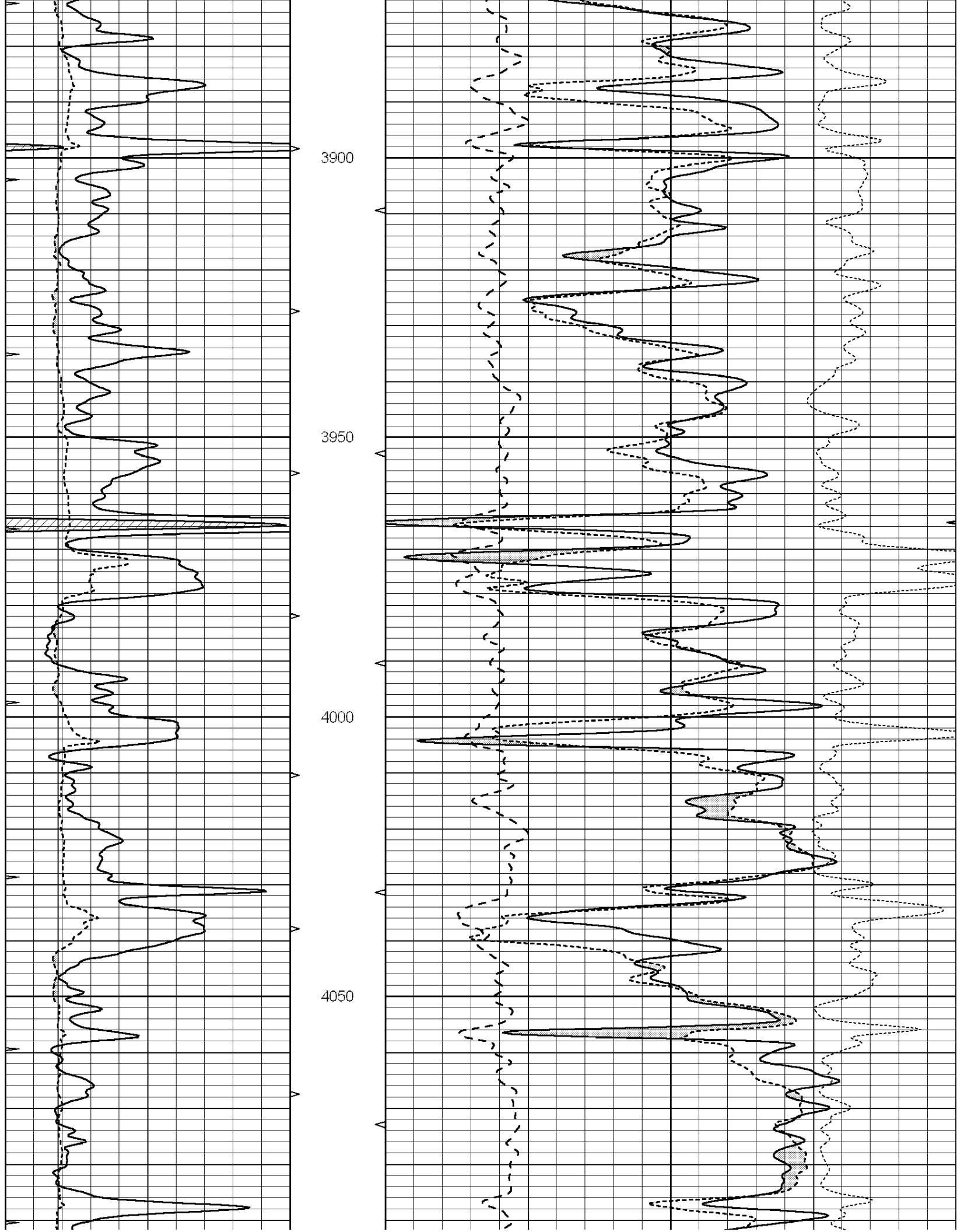
**SUPERIOR
Hays,
Kansas**

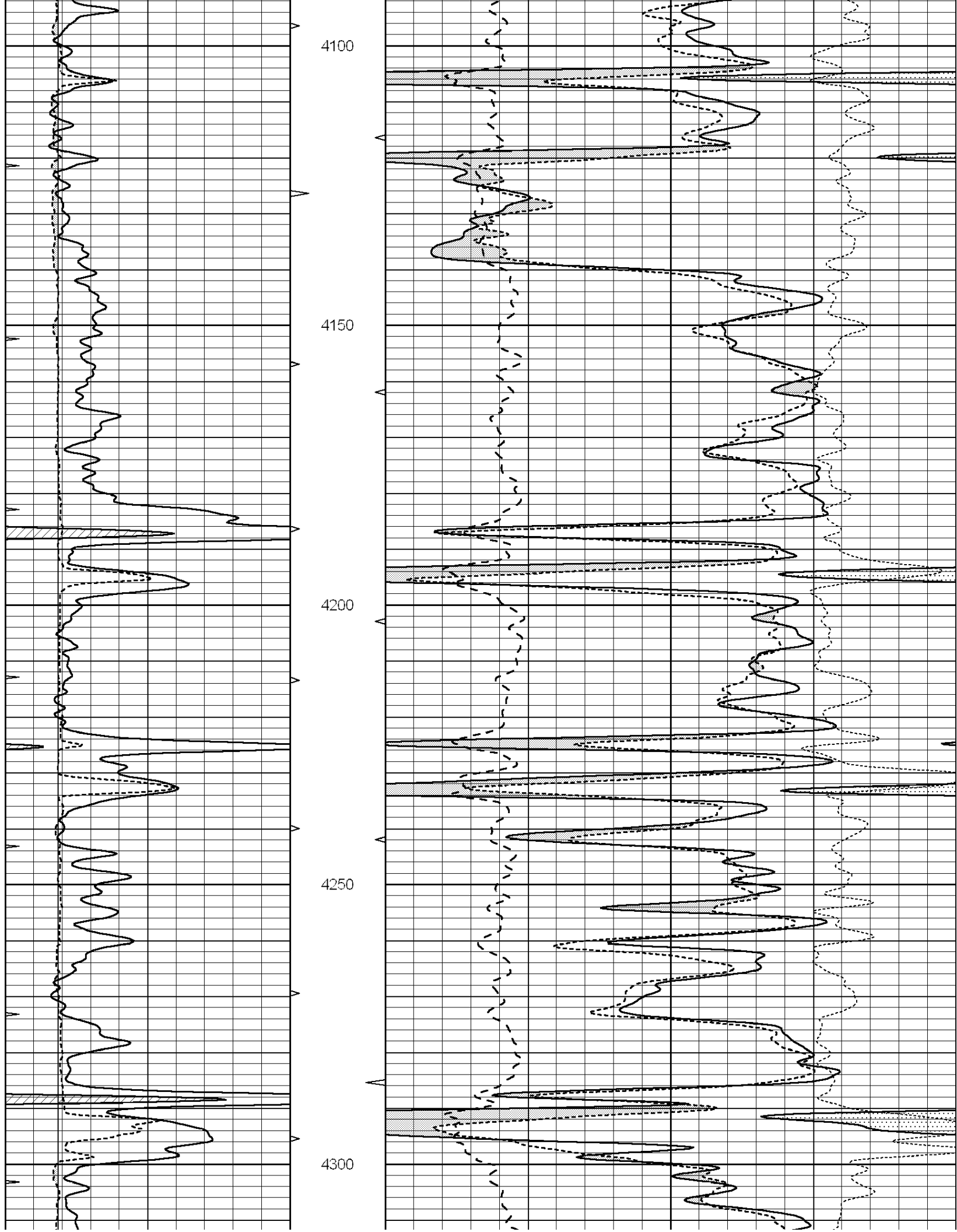
MAIN SECTION

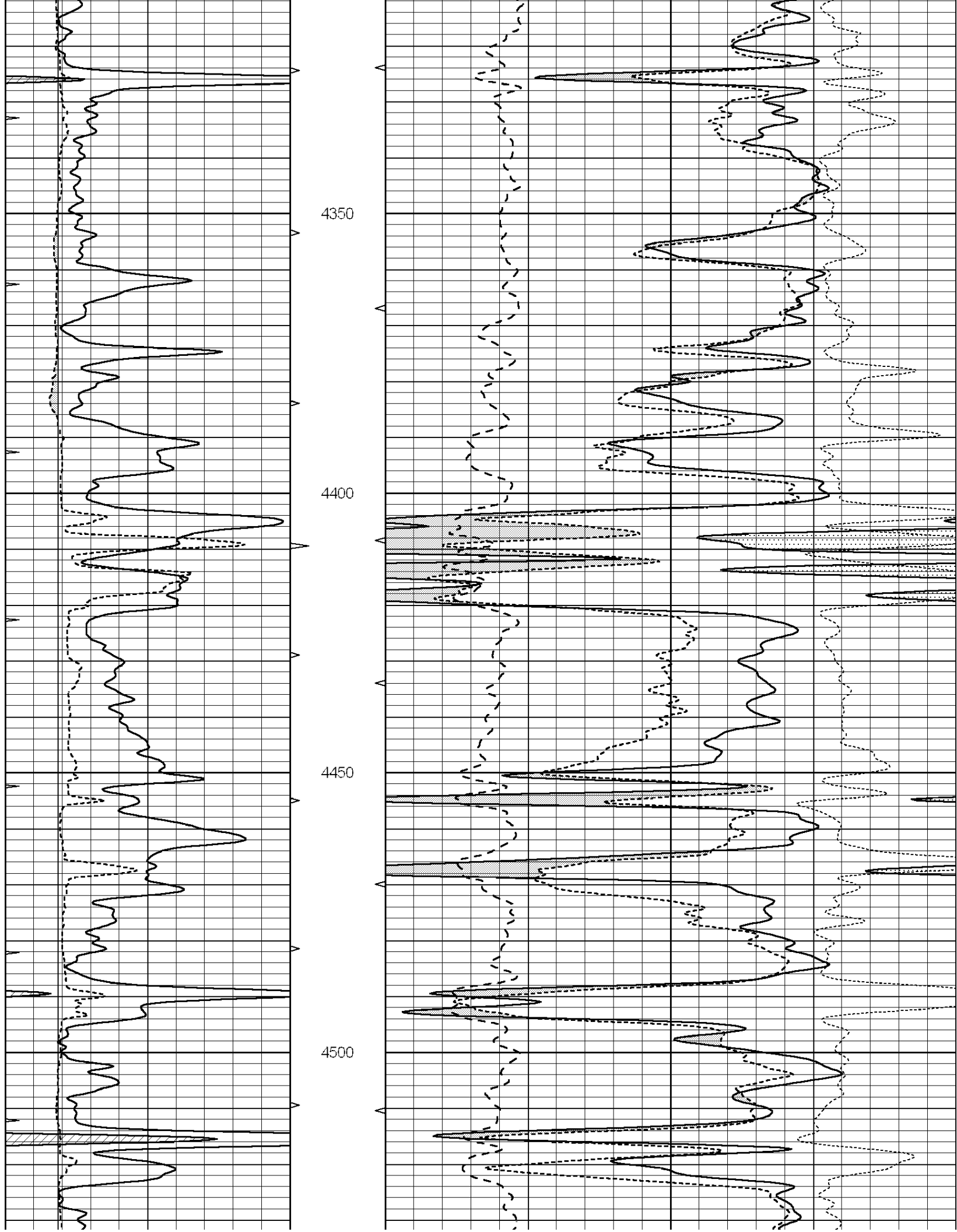
Database File: 005906pdm.db
 Dataset Pathname: pass3.A
 Presentation Format: ldt_neu
 Dataset Creation: Fri Oct 22 11:40:16 2010
 Charted by: Depth in Feet scaled 1:240

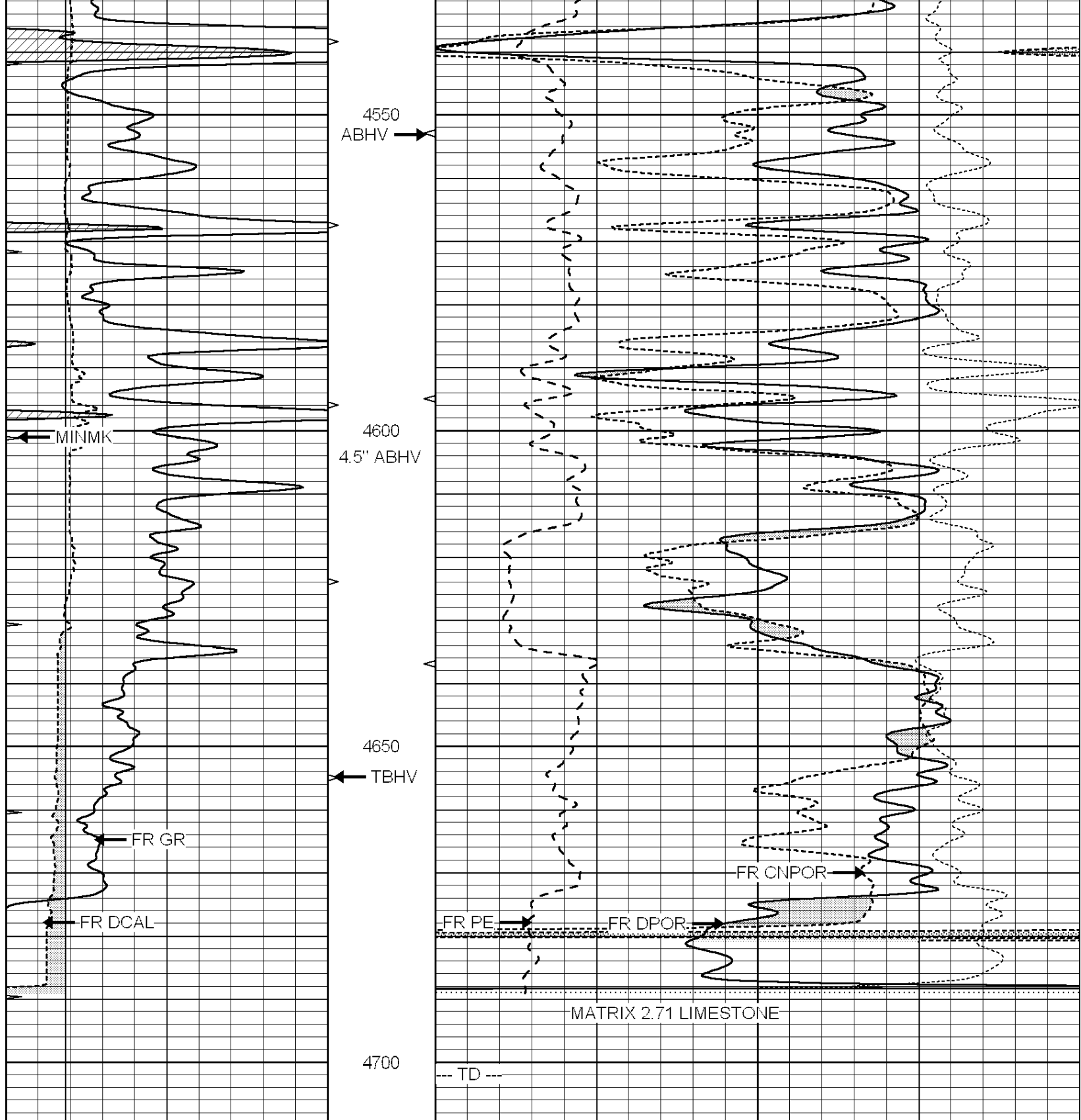
0	GAMMA RAY (GAPI)	150	ABHV	30	COMPENSATED DENSITY (pu)		-10
6	CALIPER (in)	16	10 (ft3)	0	COMPENSATED NEUTRON (pu)		-10
0	MINMK	20	TBHV	0	PE	10	-0.25 CORRECTION (g/cc) 0.25
			0 (ft3)	10			







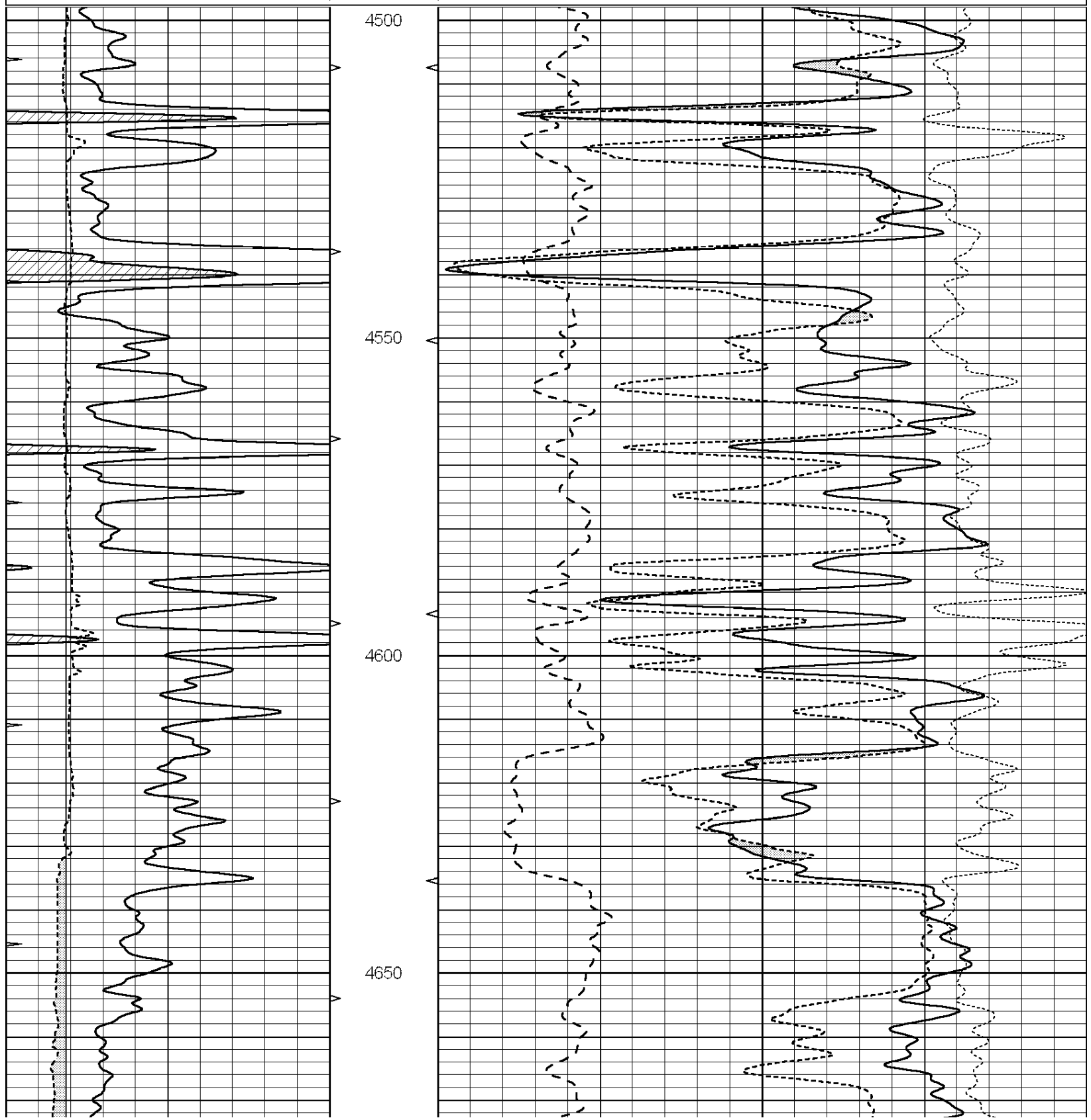


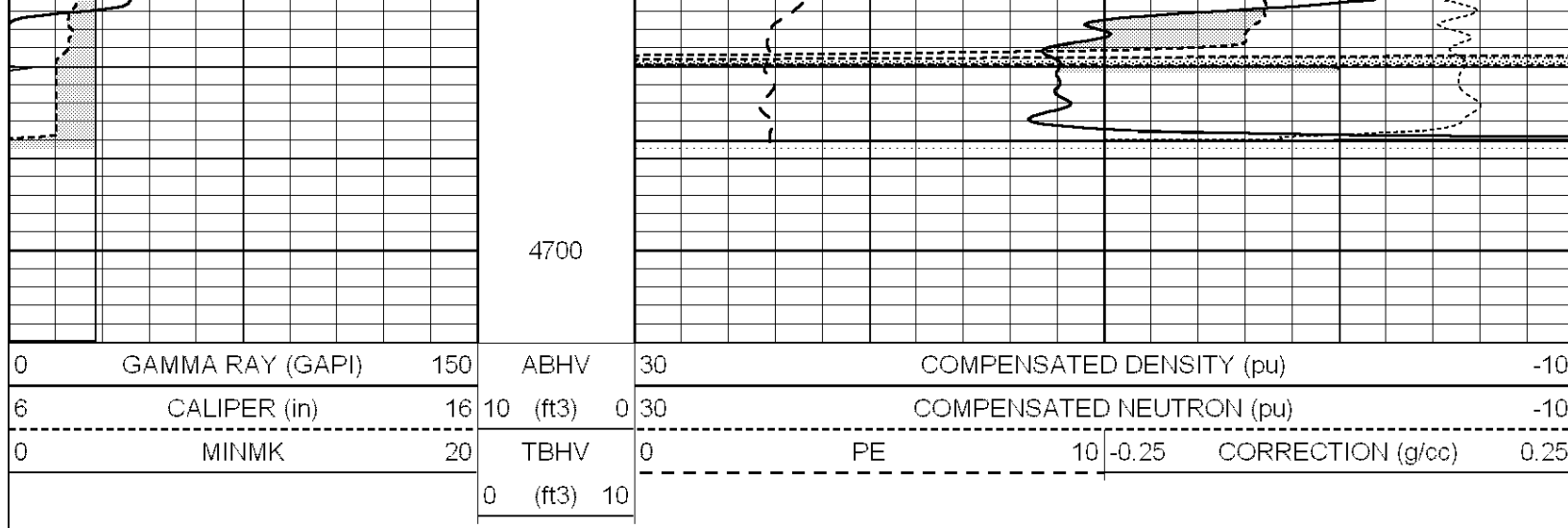


0	GAMMA RAY (GAPI)	150	ABHV	30	COMPENSATED DENSITY (pu)	-10
6	CALIPER (in)	16	10 (ft3)	0 30	COMPENSATED NEUTRON (pu)	-10
0	MINMK	20	TBHV	0	PE	10 -0.25
			0 (ft3)	10	CORRECTION (g/cc)	0.25

Database File: 005906pdn.db
 Dataset Pathname: pass2.A
 Presentation Format: ldt_neu
 Dataset Creation: Fri Oct 22 11:47:03 2010
 Charted by: Depth in Feet scaled 1:240

0	GAMMA RAY (GAPI)	150	ABHV	30	COMPENSATED DENSITY (pu)		-10
6	CALIPER (in)	16	10 (ft3)	0	COMPENSATED NEUTRON (pu)		-10
0	MINMK	20	TBHV	0	PE	10	-0.25 CORRECTION (g/cc) 0.25
			0 (ft3)	10			





Calibration Report

Database File: 005906pdn.db
 Dataset Pathname: pass3.A
 Dataset Creation: Fri Oct 22 11:40:16 2010

Dual Induction Calibration Report

Serial-Model: DIL5-GEAR
 Performed: Fri Oct 22 10:29:16 2010

Loop:	Readings			References			Results	
	Air	Loop		Air	Loop		m	b
Deep	0.004	0.654	V	0.000	400.000	mmho/m	540.000	-6.000
Medium	-0.005	0.737	V	0.000	462.500	mmho/m	520.000	-8.000
Internal:	Zero	Cal		Zero	Cal		m	b
Deep	0.006	0.655	V	0.000	400.000	mmho/m	615.668	-3.483
Medium	0.010	0.747	V	0.000	462.500	mmho/m	627.607	-6.064

Litho Density Calibration Report
 Serial: 002 Model: PRB
 Performed Tue Jul 03 11:12:28 2007

Litho Density Calibration

	Background	Magnesium	Aluminum	Sandstone	
Window 1	1059.5	9172.0	2859.6	10210.6	cps
Window 2	976.0	7793.2	2486.1	8515.6	cps
Window 3	689.8	2930.5	1159.0	3096.2	cps
Window 4	231.9	237.2	231.1	234.0	cps
Long Space	0.0	6817.1	1510.1	7539.6	cps
Short Space	1.6	1758.1	1188.6	1898.8	cps
Rho		1.7100	2.5960	1.3800	g/cc
Pe			2.5700	1.5500	
Rib Angle	: 45.4	Rib Slope	: 1.015	Density/Spine Ratio	: 0.569
Spine Angle	: 75.4	Spine Slope	: 3.850	Spine Intercept	: -19.9

Caliper

	Readings	Reference
Low Ref	2.8	7.9
High Ref	4.8	14.0
Gain:	3.0	Offset: -0.5

Compensated Neutron Calibration Report

Serial Number: NEU_11
 Tool Model: G

CALIBRATION

Detector	Readings	Target	Normalization
Short Space	1.00 cps	1.00 cps	1.0000
Long Space	1.00 cps	1.00 cps	1.0000

Gamma Ray Calibration Report

Serial Number: GR5
 Tool Model: OPEN
 Performed: Thu Oct 21 16:40:45 2010

Calibrator Value: 1.0 GAPI

Background Reading: 0.0 cps
 Calibrator Reading: 1.0 cps

Sensitivity: 0.6500 GAPI/cps