



SUPERIOR
Hays,
Kansas

**DUAL
INDUCTION
LOG**

Company	TRANS PACIFIC OIL CORP.	Location:	API # : 15-167-23679-0000	Other Services CDL/CNL
Well	#1-1 CEDERBERG "A"	Well	#1-1 CEDERBERG "A"	
Field	WILDCAT	Field	WILDCAT	
County	RUSSELL	County	RUSSELL	
State	KANSAS	State	KANSAS	
Permanent Datum	GROUND LEVEL	Elevation	1782	
Log Measured From	KELLY BUSHING 5' A.G.L.	Elevation	1785	
Drilling Measured From	KELLY BUSHING	Elevation	1782	
SEC 1 TWP 11S RGE 14W				
1199' FNL & 779' FWL				
SW - SE - NW - NW				

Date	12/18/10
Run Number	ONE
Depth Driller	3367
Depth Logger	3371
Bottom Logged Interval	3369
Top Log Interval	00
Casing Driller	8 5/8" @ 261
Casing Logger	
Bit Size	7 7/8
Type Fluid in Hole	CHEMICAL MUD
Density / Viscosity	9.3/50
pH / Fluid Loss	10.0/8.8
Source of Sample	FLOWLINE
Rim @ Meas. Temp	.85 @ 60F
Rmf @ Meas. Temp	.63 @ 60F
Rmc @ Meas. Temp	1.02 @ 60F
Source of Rmf / Rmc	MEASURED
Rim @ BHT	.45 @ 112F
Time Circulation Stopped	2 HOURS
Time Logger on Bottom	
Maximum Recorded Temperature	112F
Equipment Number	680
Location	HAYS, KS.
Recorded By	JASON CAPPELLUCCI
Witnessed By	TED JOCHEMS

<<< Fold Here >>>

All interpretations are opinions based on inferences from electrical or other measurements and we cannot and do not guarantee the accuracy or correctness of any interpretation, and we shall not, except in the case of gross or willful negligence on our part, be liable or responsible for any loss, costs, damages, or expenses incurred or sustained by anyone resulting from any interpretation made by any of our officers, agents or employees. These interpretations are also subject to our general terms and conditions set out in our current Price Schedule.

Comments

THANK YOU FOR USING SUPERIOR WELL SERVICE (785) 628-6395
 DIRECTIONS
 RUSSELL KS. - N. TO 281 & 18 JCT. - 1/2 E. TO RD 186 - 1 N. - 3/4 E. - S. INTO



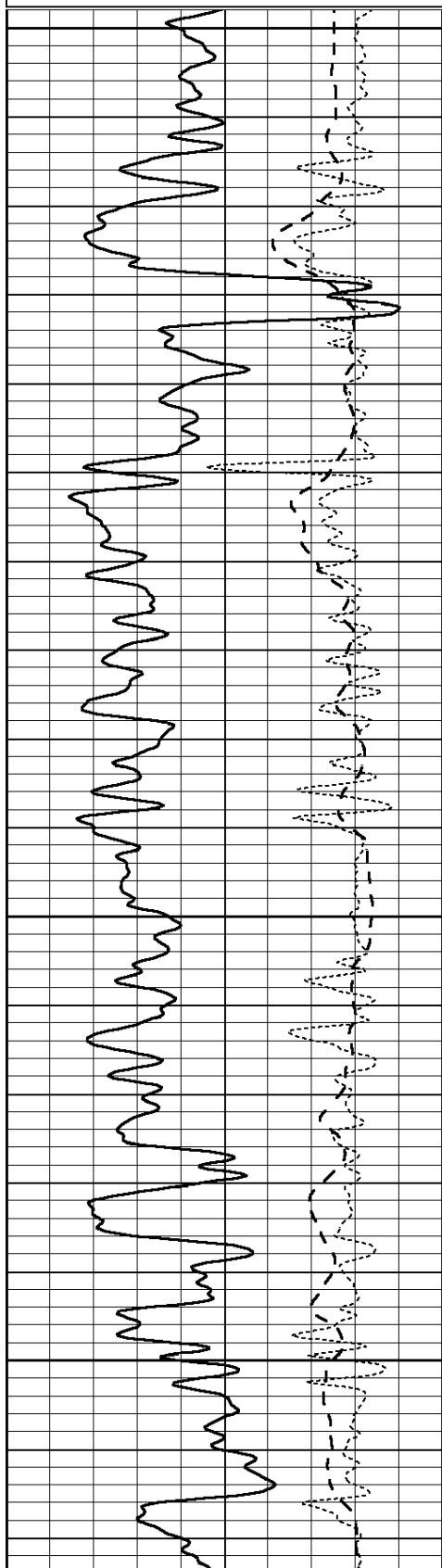
SUPERIOR
Hays,
Kansas

MAIN SECTION

Database File: 006434ddn.db
 Dataset Pathname: pass3.1
 Presentation Format: _dil
 Dataset Creation: Sat Dec 18 08:16:57 2010 by Calc Open-Cased 090629
 Charted by: Depth in Feet scaled 1:240

0	GAMMA RAY (GAPI)	150
-100	SP (mV)	100
-250	Rxo/Rt	50

0.2	SHALLOW GUARD (Ohm-m)	2000
0.2	MEDIUM INDUCTION (Ohm-m)	2000
0.2	DEEP INDUCTION (Ohm-m)	2000

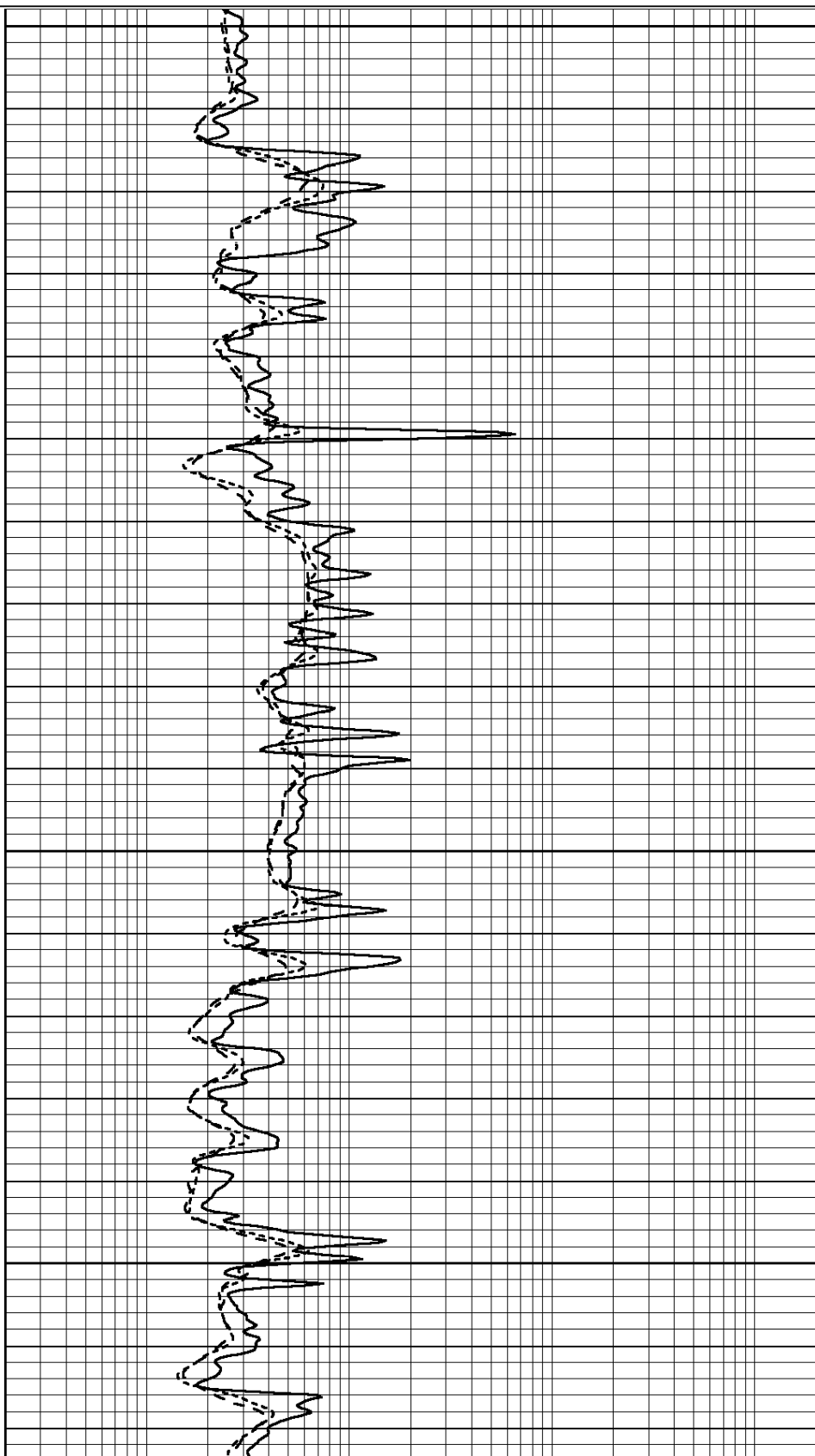


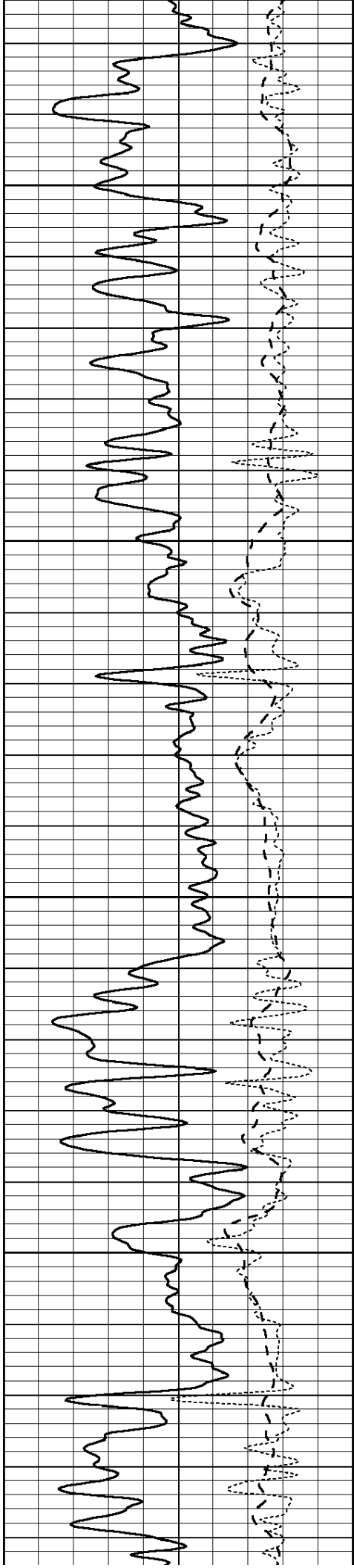
2200

2250

2300

2350



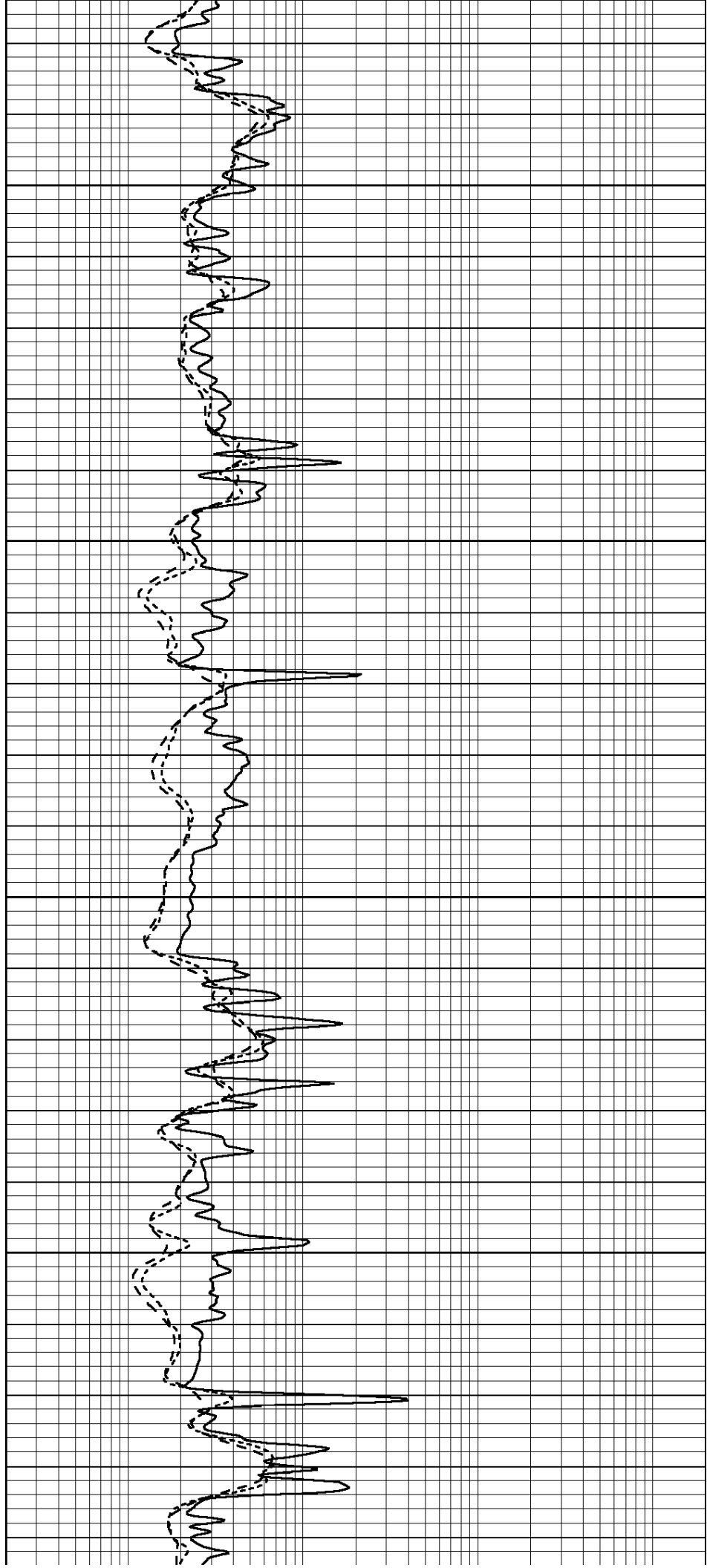


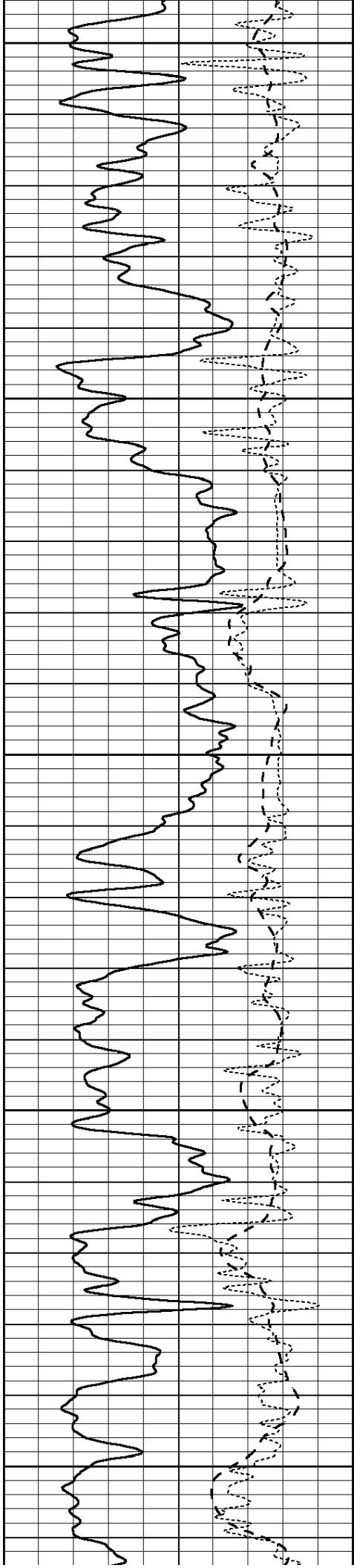
2400

2450

2500

2550





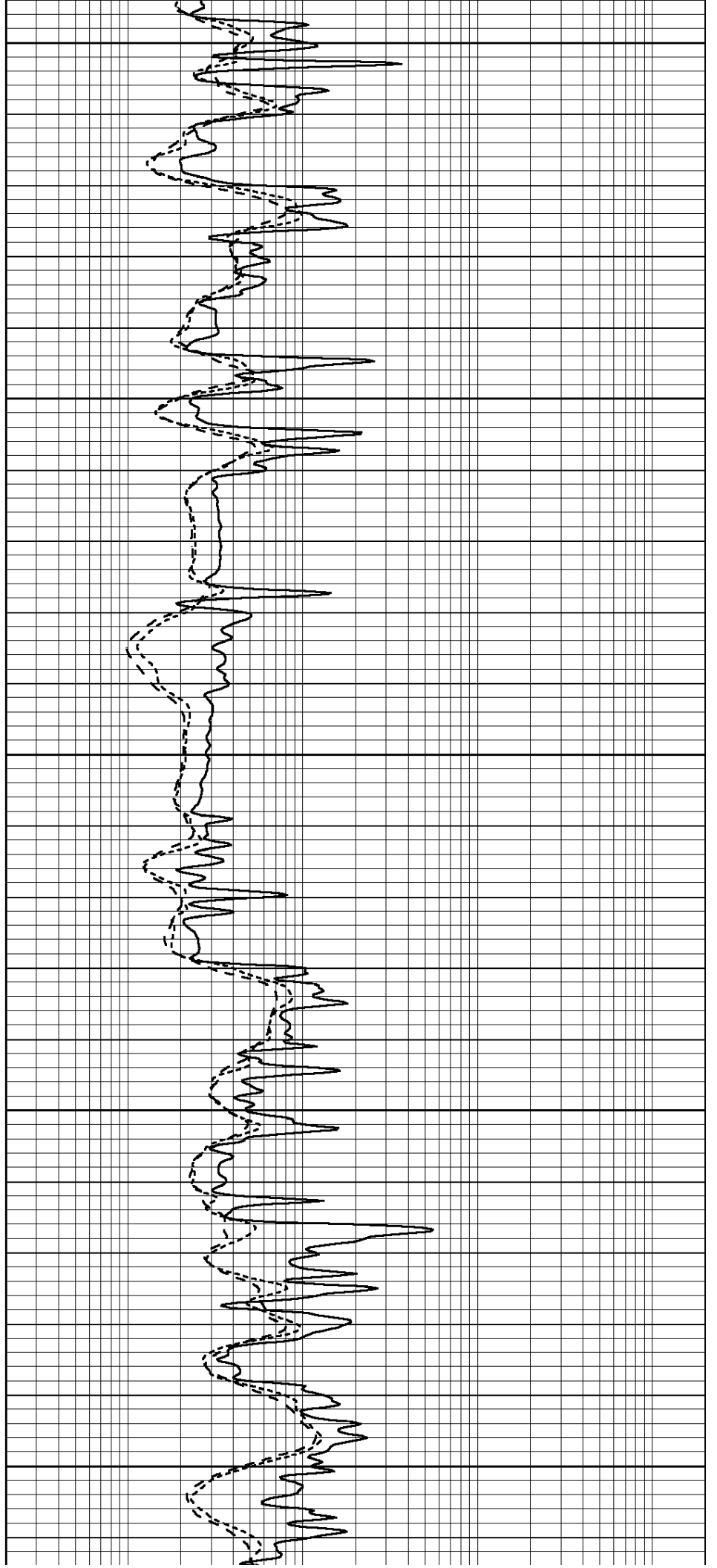
2600

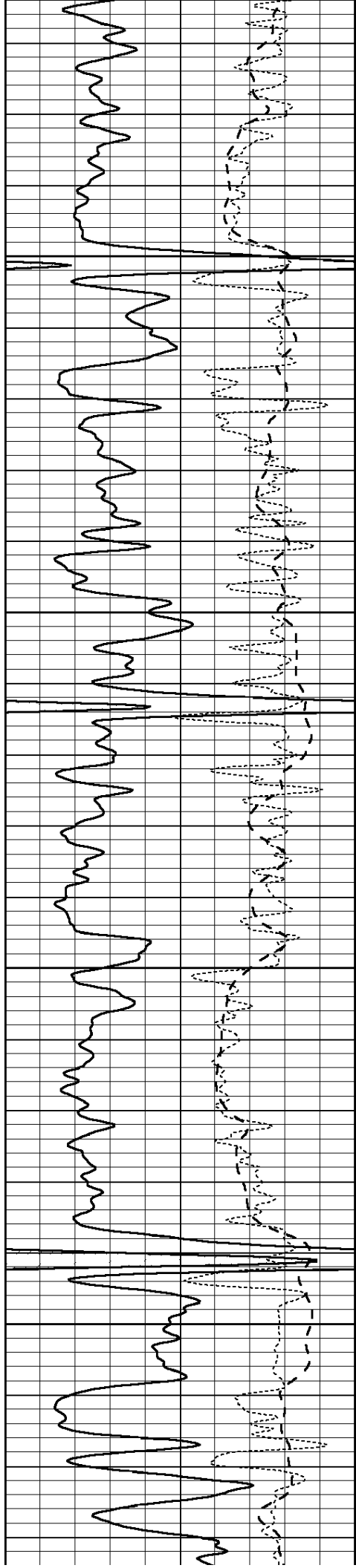
2650

2700

2750

2800



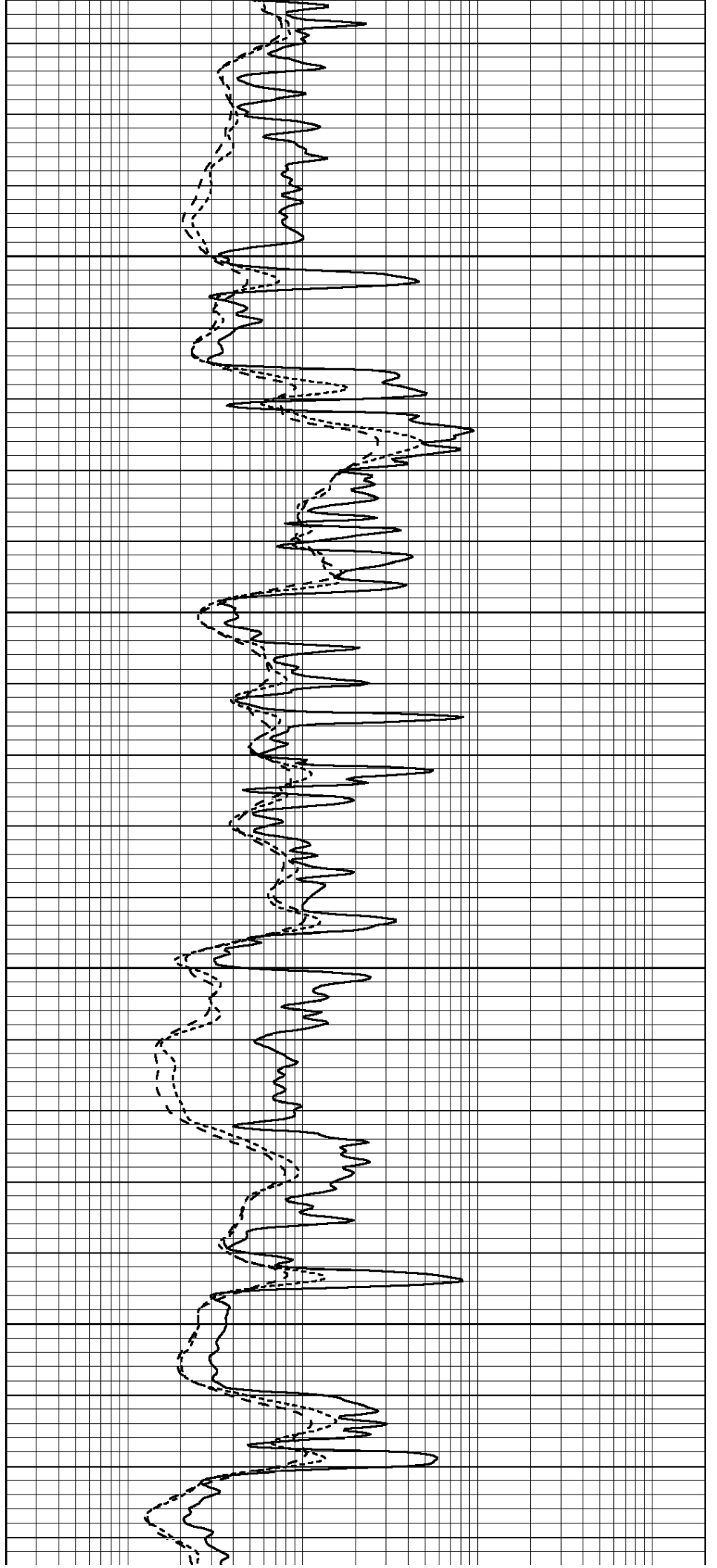


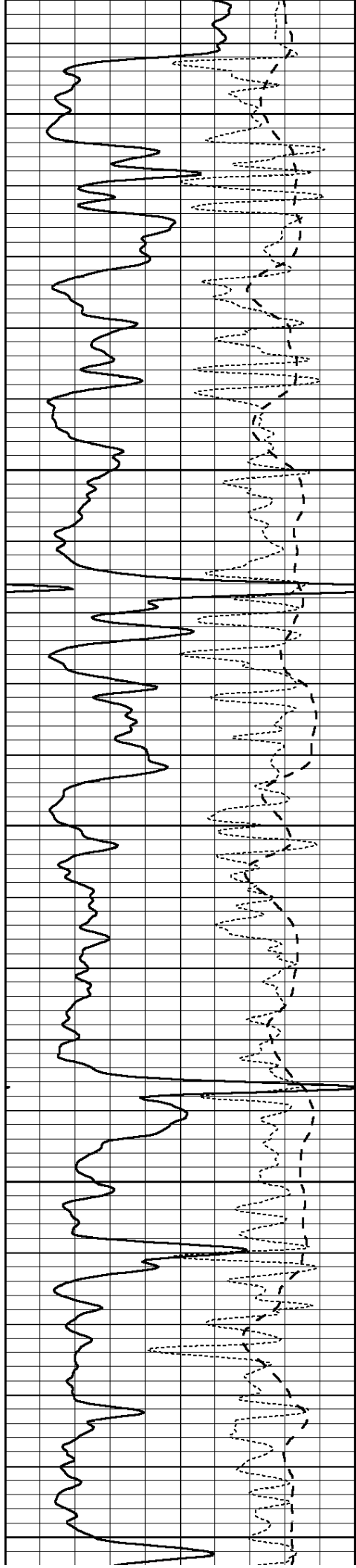
2850

2900

2950

3000





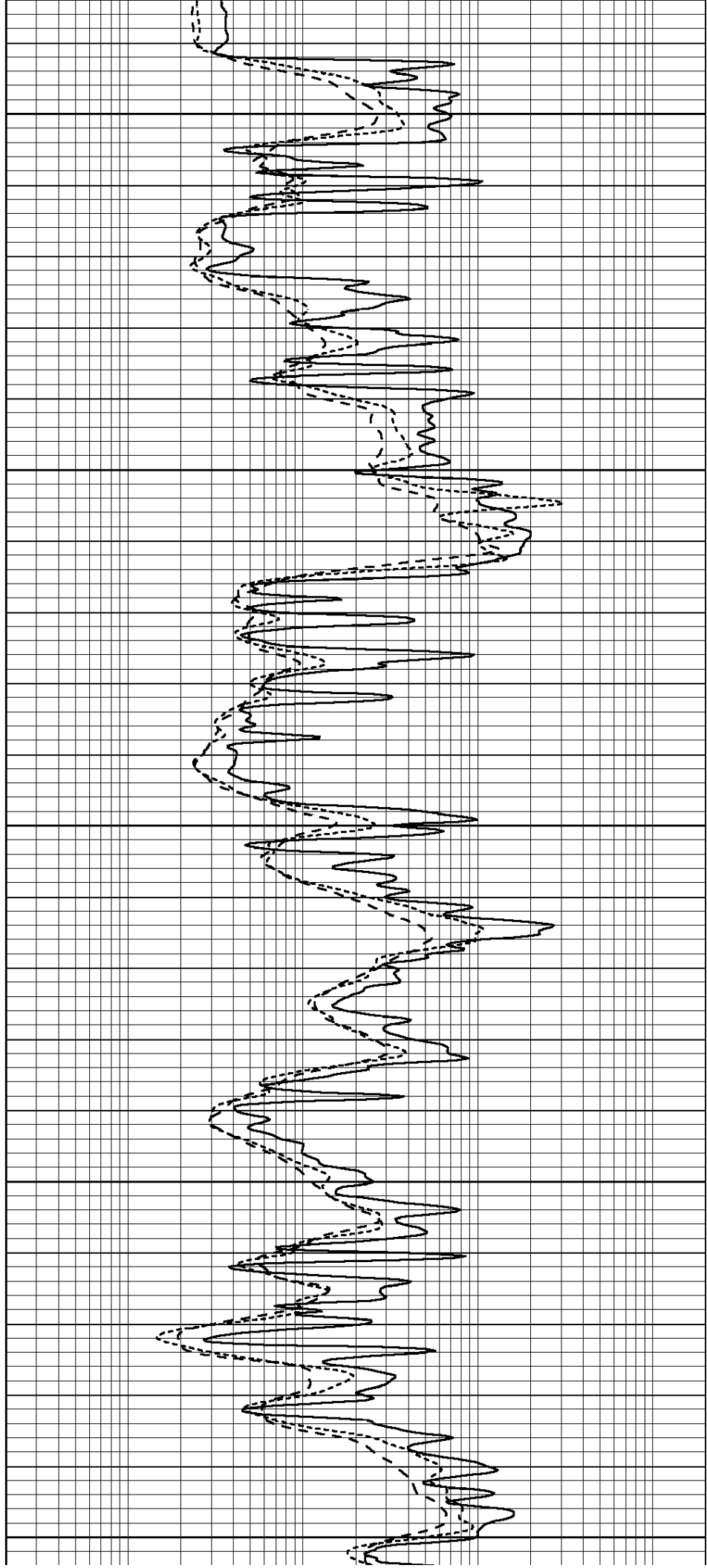
3050

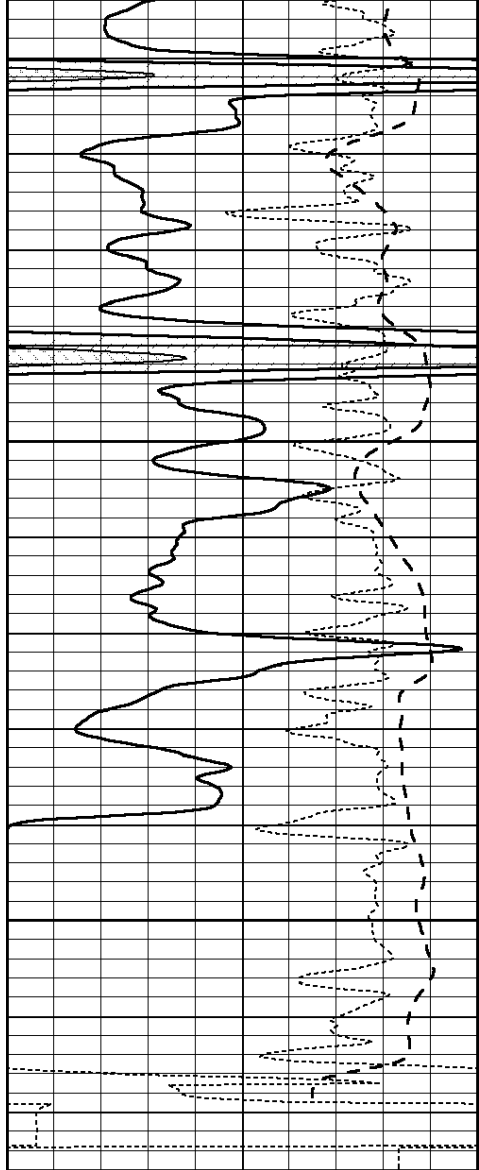
3100

3150

3200

3250

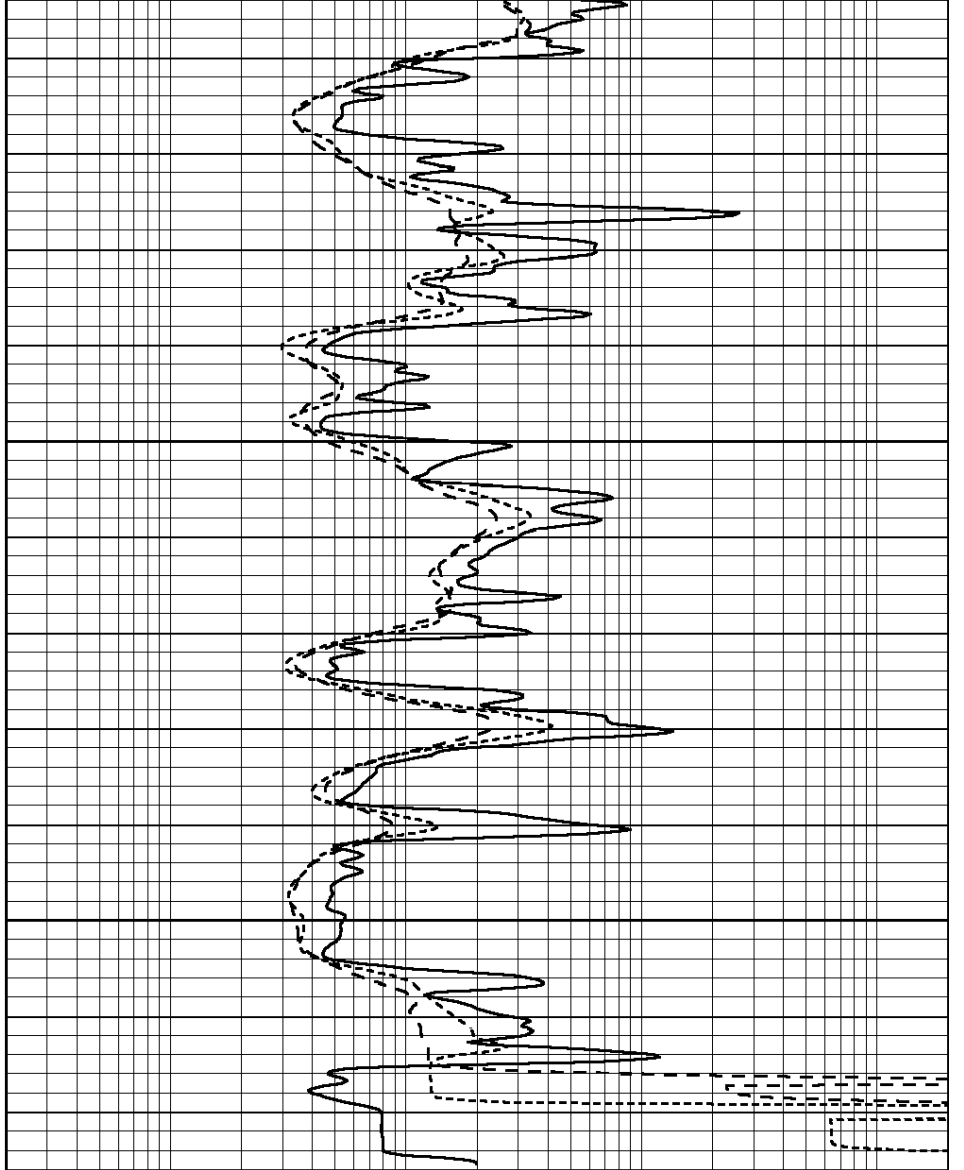




3300

3350

0	GAMMA RAY (GAPI)	150
-100	SP (mV)	100
-250	Rxo/Rt	50



0.2	SHALLOW GUARD (Ohm-m)	2000
0.2	MEDIUM INDUCTION (Ohm-m)	2000
0.2	DEEP INDUCTION (Ohm-m)	2000