



**SUPERIOR**  
Hays,  
Kansas

**COMPENSATED  
NEUTRON / DENSITY  
LOG**

Company TRANS PACIFIC OIL CORP.  
Well #1-1 CEDERBERG "A"  
Field WILDCAT  
County RUSSELL  
State KANSAS

Company TRANS PACIFIC OIL CORPORATION  
Well #1-1 CEDERBERG "A"  
Field WILDCAT  
County RUSSELL State KANSAS

Location: API # : 15-167-23679-0000  
1199' FNL & 779' FWL  
SW - SE - NW - NW  
SEC 1 TWP 11S RGE 14W  
Permanent Datum GROUND LEVEL Elevation 1782  
Log Measured From KELLY BUSHING 5' A.G.L.  
Drilling Measured From KELLY BUSHING  
Other Services  
DIL  
Elevation  
K.B. 1787  
D.F. 1785  
G.L. 1782

Date	12/18/10
Run Number	ONE
Depth Driller	3367
Depth Logger	3371
Bottom Logged Interval	3347
Top Log Interval	2200
Casing Driller	8 5/8" @ 261
Casing Logger	
Bit Size	7 7/8
Type Fluid in Hole	CHEMICAL MUD
Density / Viscosity	9.3/50
pH / Fluid Loss	10.0/8.8
Source of Sample	FLOWLINE
Rim @ Meas. Temp	.85 @ 60F
Rmf @ Meas. Temp	.63 @ 60F
Rmc @ Meas. Temp	1.02 @ 60F
Source of Rmf / Rmc	MEASURED
Rim @ BHT	.45 @ 112F
Time Circulation Stopped	2 HOURS
Time Logger on Bottom	
Maximum Recorded Temperature	112F
Equipment Number	680
Location	HAYS, KS.
Recorded By	JASON CAPPELLUCCI
Witnessed By	TED JOCHEMS

<<< Fold Here >>>

All interpretations are opinions based on inferences from electrical or other measurements and we cannot and do not guarantee the accuracy or correctness of any interpretation, and we shall not, except in the case of gross or willful negligence on our part, be liable or responsible for any loss, costs, damages, or expenses incurred or sustained by anyone resulting from any interpretation made by any of our officers, agents or employees. These interpretations are also subject to our general terms and conditions set out in our current Price Schedule.

**Comments**

THANK YOU FOR USING SUPERIOR WELL SERVICE (785) 628-6395  
DIRECTIONS  
RUSSELL KS. - N. TO 281 & 18 JCT. - 1/2 E. TO RD 186 - 1 N. - 3/4 E. - S. INTO

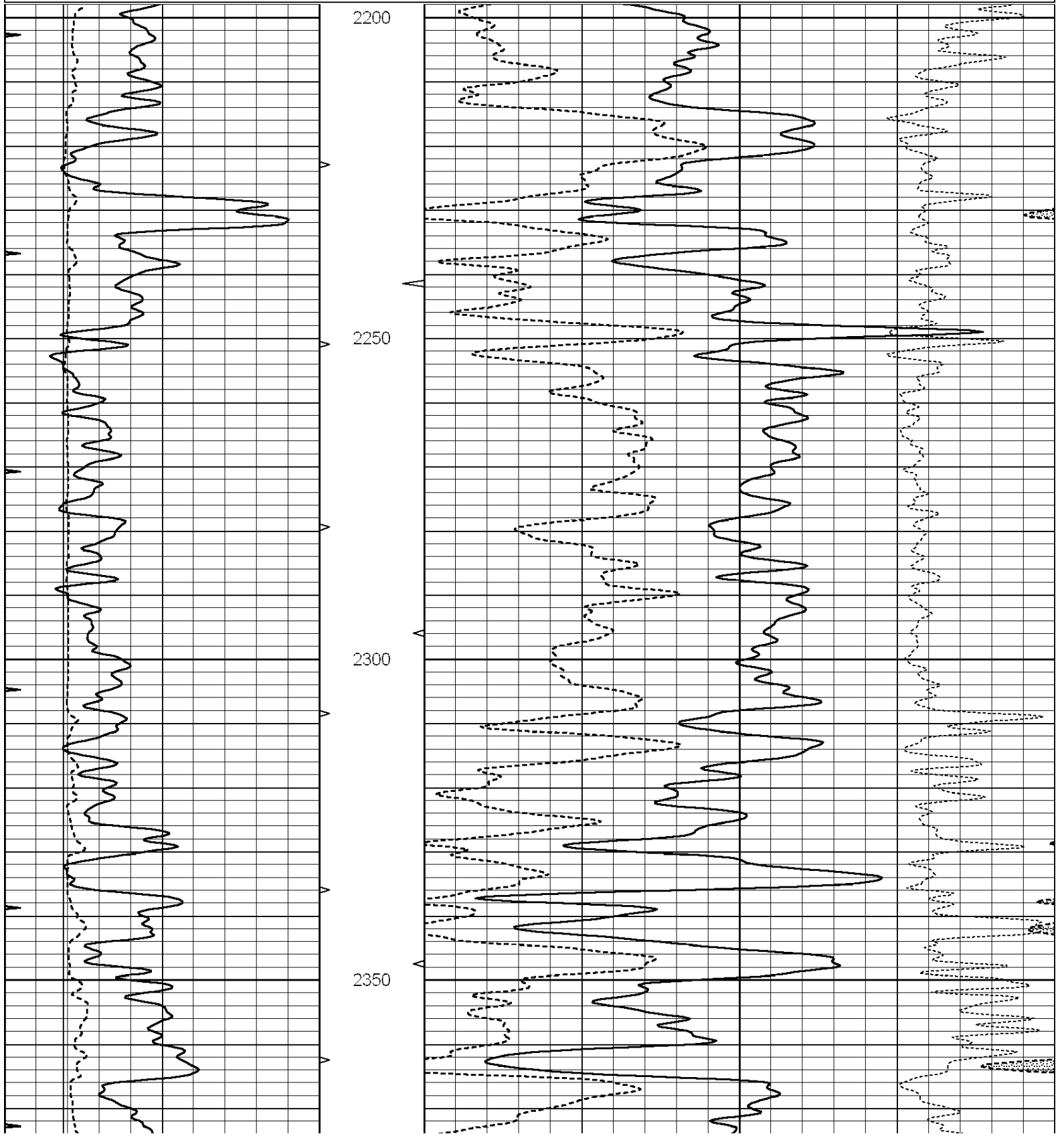


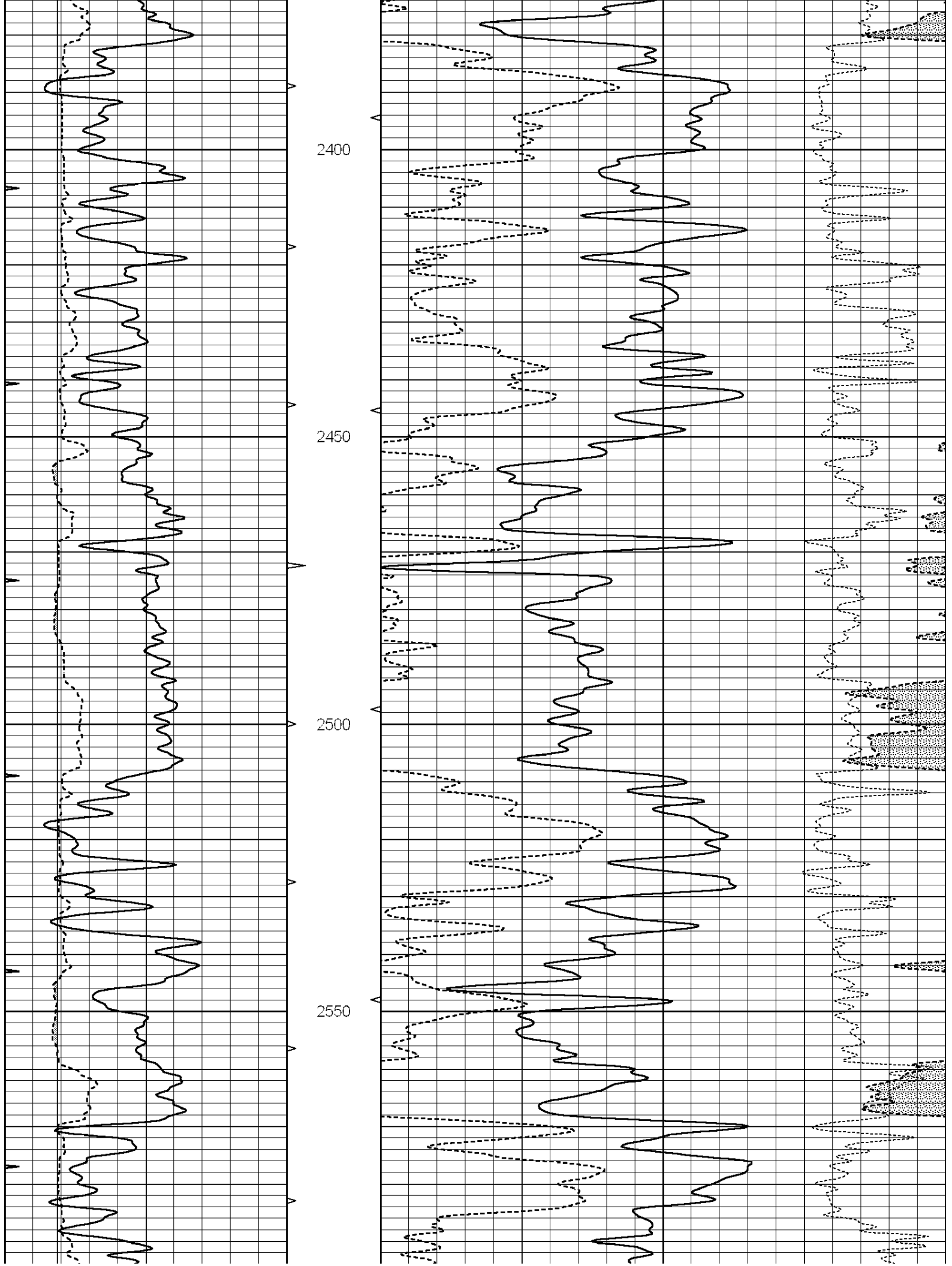
**SUPERIOR**  
Hays,  
Kansas

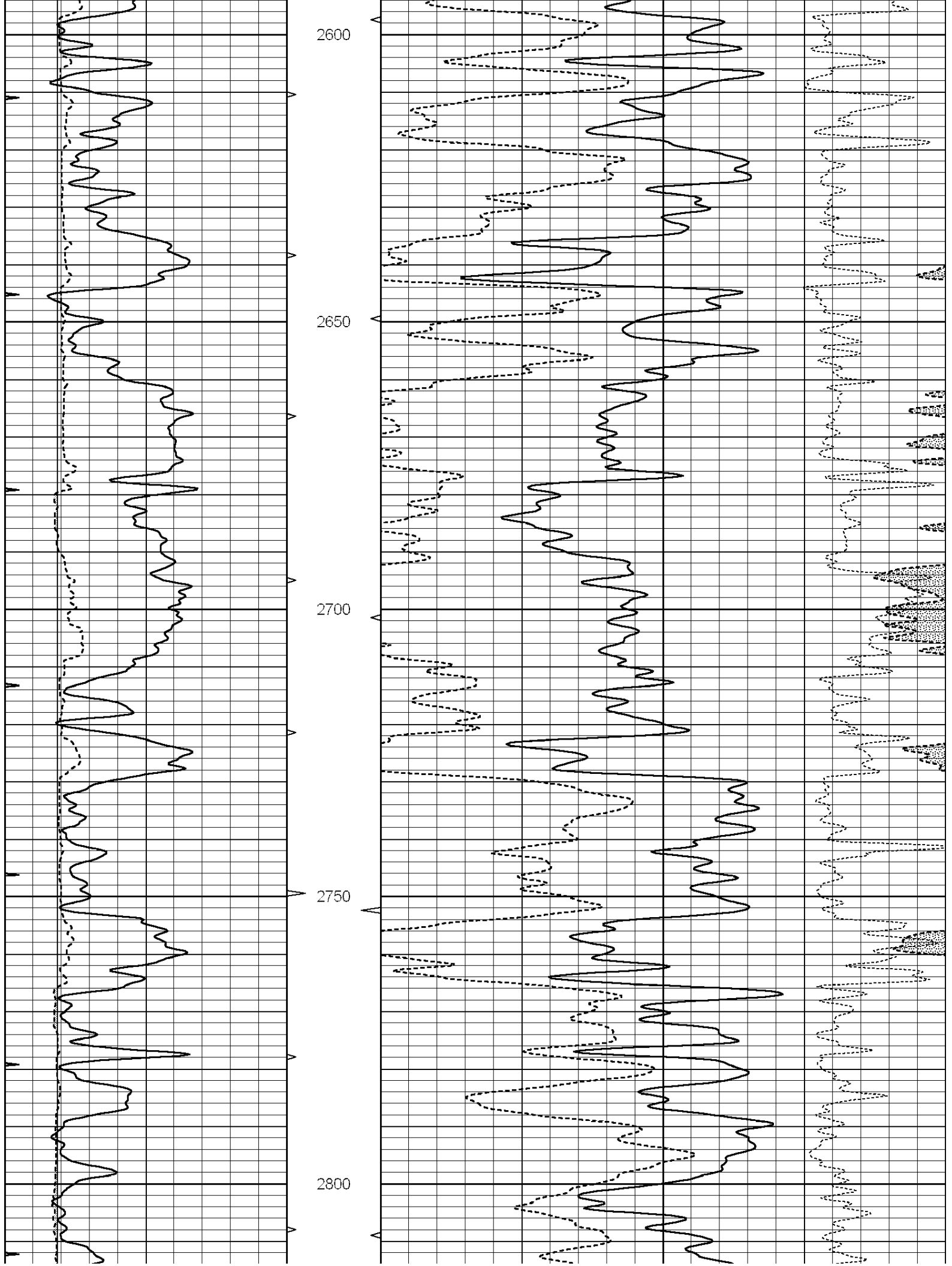
**MAIN SECTION**

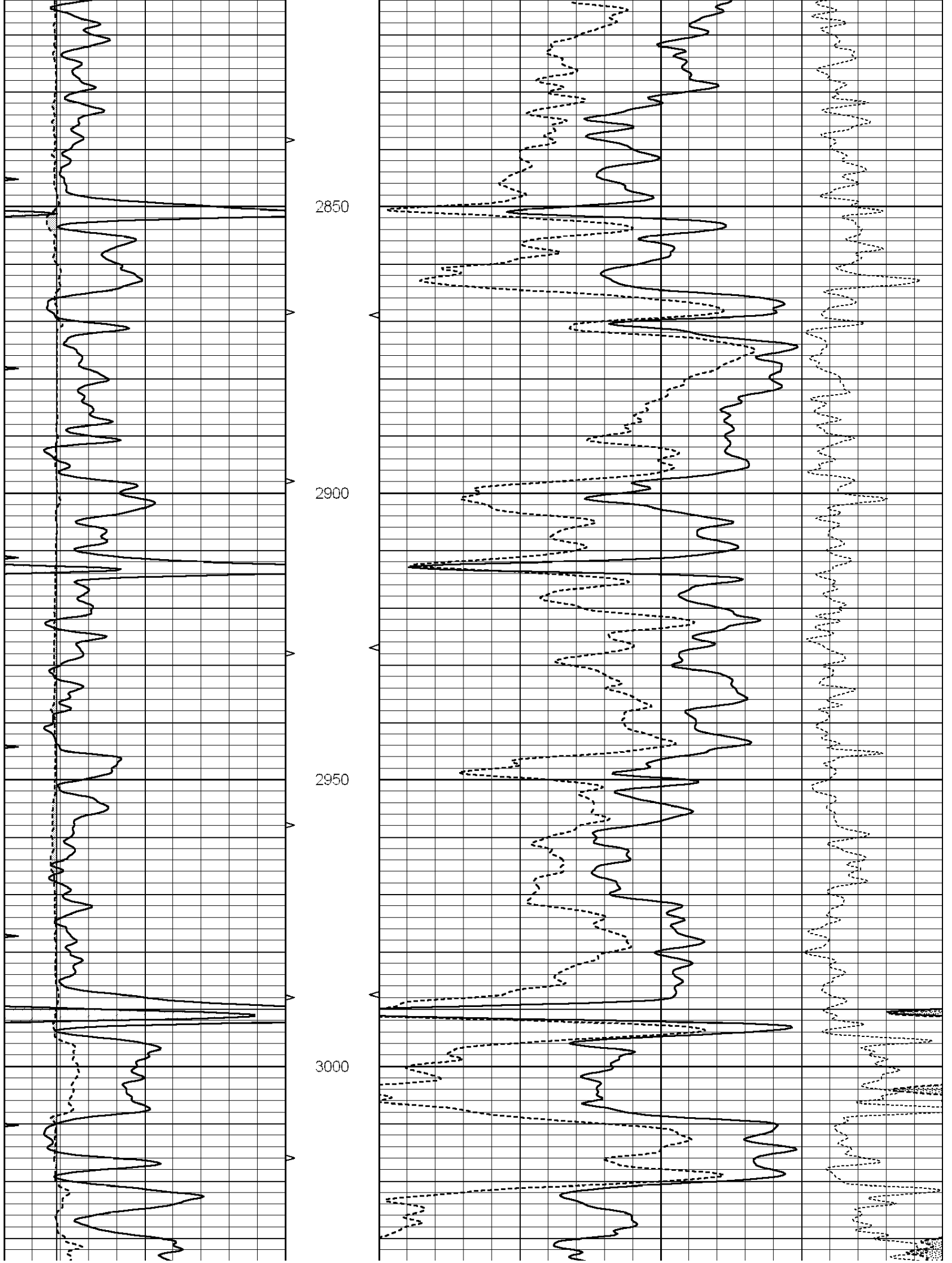
Database File: 006434ddn.db  
 Dataset Pathname: pass3.1  
 Presentation Format: \_den\_neu  
 Dataset Creation: Sat Dec 18 08:16:57 2010 by Calc Open-Cased 090629  
 Charted by: Depth in Feet scaled 1:240

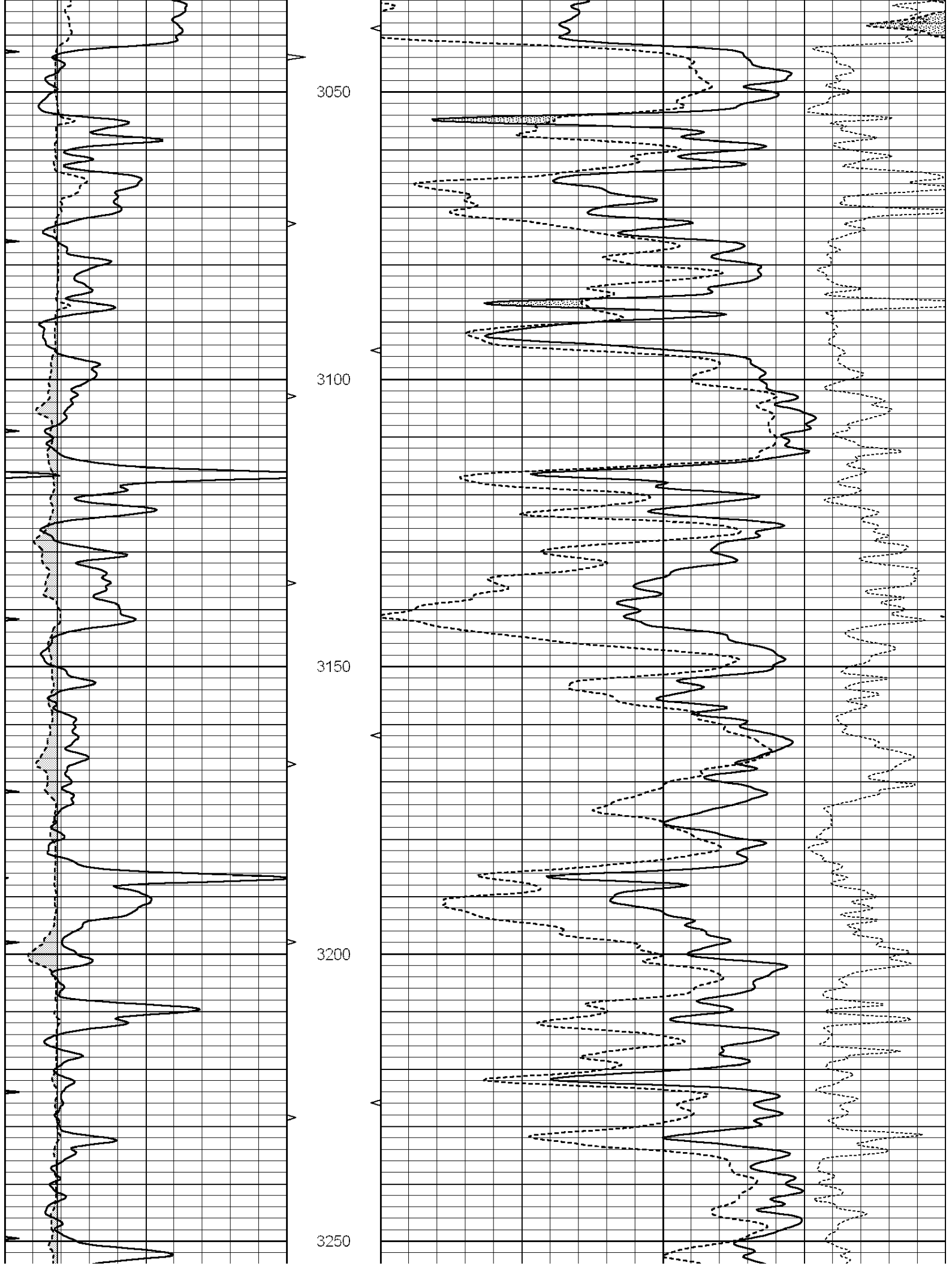
0	GAMMA RAY (GAPI)	150	AVTX	30	COMPENSATED DENSITY (pu)	-10
6	CALIPER (in)	16	10 (ft3)	0 30	COMPENSATED NEUTRON (pu)	-10
0	MINMK	20	BVTX		-0.25 CORRECTION (g/cc)	0.25
			0 (ft3)	10		

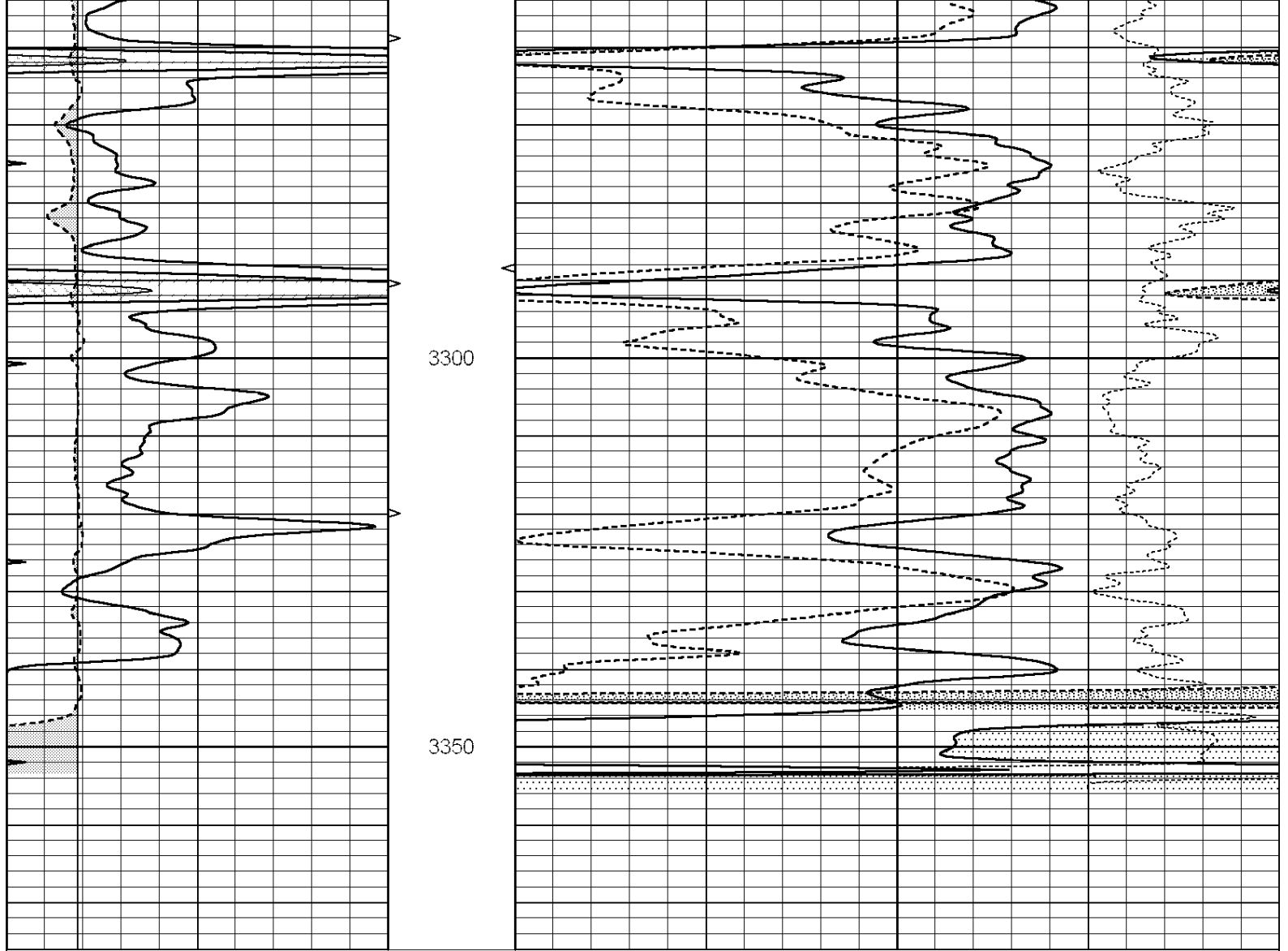












0	GAMMA RAY (GAPI)	150	AVTX	30	COMPENSATED DENSITY (pu)	-10	
6	CALIPER (in)	16	10 (ft3)	0	30	COMPENSATED NEUTRON (pu)	-10
0	MINMK	20	BVTX		-0.25	CORRECTION (g/cc)	0.25
			0 (ft3)	10			