



DIGITAL LOG (785) 625-3858

**Microresistivity
Log**

API No.	15-145-21618-00-00		
Company	Downing-Nelson Oil Company, Inc.		
Well	Frantz-Saxton Unit No. 1-19		
Field	Wildcat		
County	Pawnee	State	Kansas
Location	N/2 - S/2 - S/2 - N/2 2210' FNL & 2607' FEL		
Sec: 19	Twp: 20 S	Rge: 20 W	
Permanent Datum	Ground Level	Elevation	2182
Log Measured From	Kelly Bushing	6 Ft. Above Perm. Datum	
Drilling Measured From	Kelly Bushing		
		Other Services	CNL/CDL DIL/BHCS
		Elevation	K.B. 2188 D.F. 2182 G.L. 2182

Date	11/22/2010
Run Number	Two
Depth Driller	4337
Depth Logger	4339
Bottom Logged Interval	4338
Top Log Interval	3500
Casing Driller	8.625 @ 1161
Casing Logger	1154
Bit Size	7.875
Type Fluid in Hole	Chemical
Salinity, ppm CL	3.000
Density / Viscosity	9.2 57
pH / Fluid Loss	10.0 8.8
Source of Sample	Flowline
Rm @ Meas. Temp	1.70 @ 60
Rmf @ Meas. Temp	1.28 @ 60
Rmc @ Meas. Temp	2.30 @ 60
Source of Rmf / Rmc	Charts
Rm @ BHT	0.85 @ 119
Operating Rig Time	5 Hours
Max Rec. Temp. F	119
Equipment Number	15
Location	Hays
Recorded By	B. Becker
Witnessed By	Marc Downing

<<< Fold Here >>>

All interpretations are opinions based on inferences from electrical or other measurements and we cannot and do not guarantee the accuracy or correctness of any interpretation, and we shall not, except in the case of gross or willful negligence on our part, be liable or responsible for any loss, costs, damages, or expenses incurred or sustained by anyone resulting from any interpretation made by any of our officers, agents or employees. These interpretations are also subject to our general terms and conditions set out in our current Price Schedule.

Comments

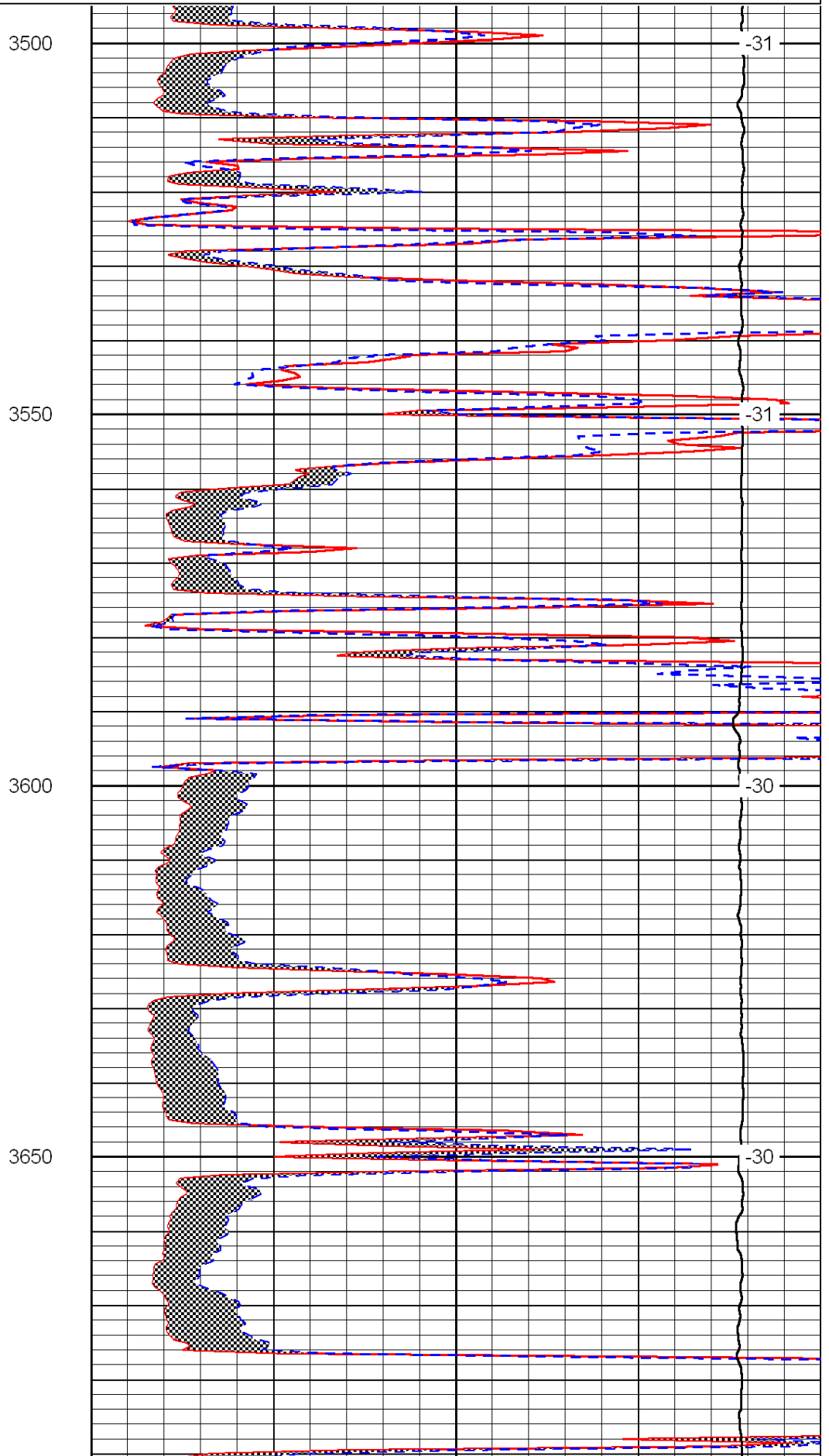
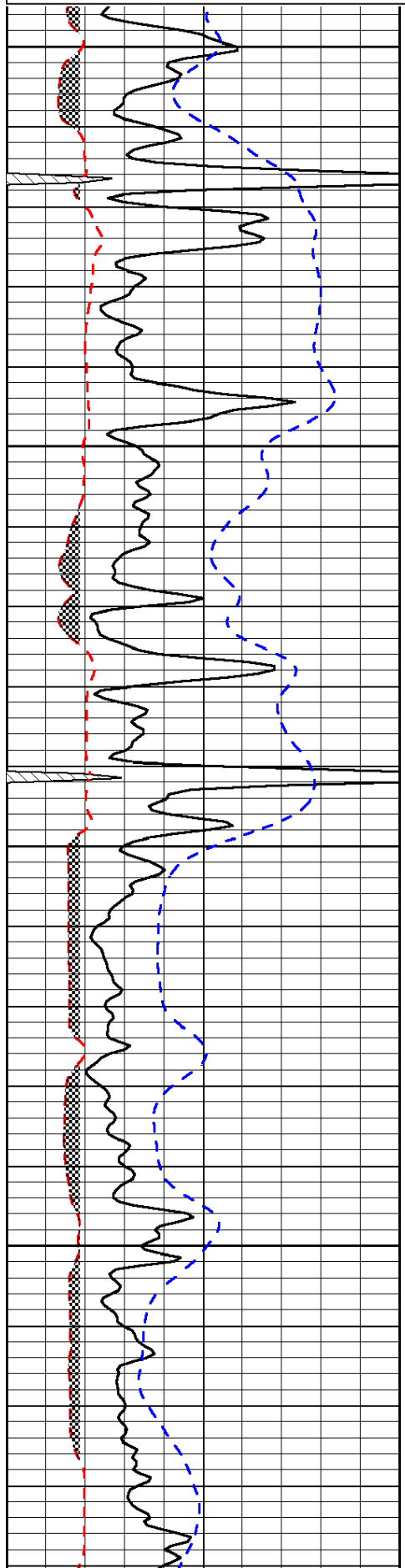
Thank you for using Log-Tech, Inc.
(785) 625-3858

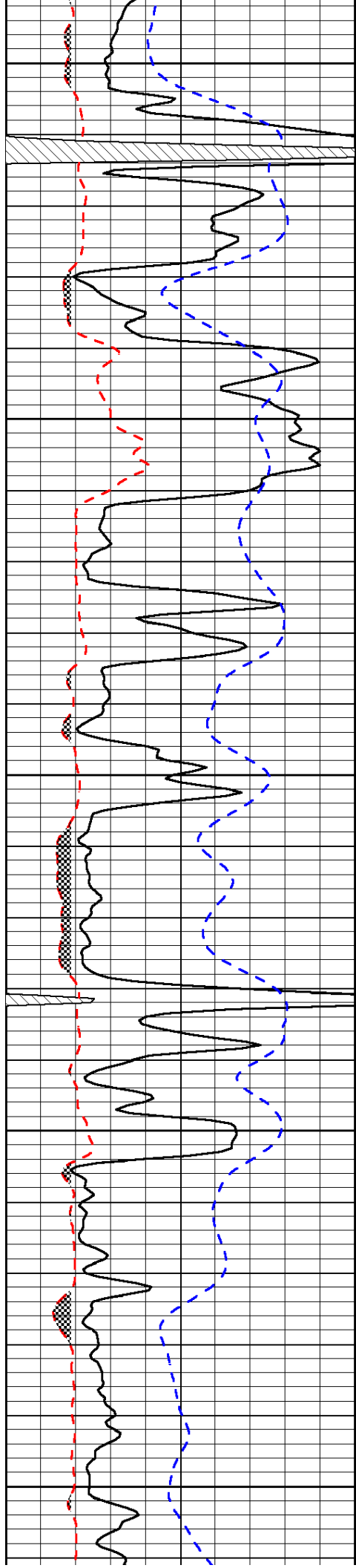
Alexander, Ks;
11 South to W Rd;
1-1/2 West; South Into

0	Gamma Ray	150
6	Micro Log Caliper (GAPI)	16
-200	SP (mV)	0

0	Micro Inverse 1 X 1	40
0	Micro Normal 2"	40
15000	Line Weight	0

LSPD





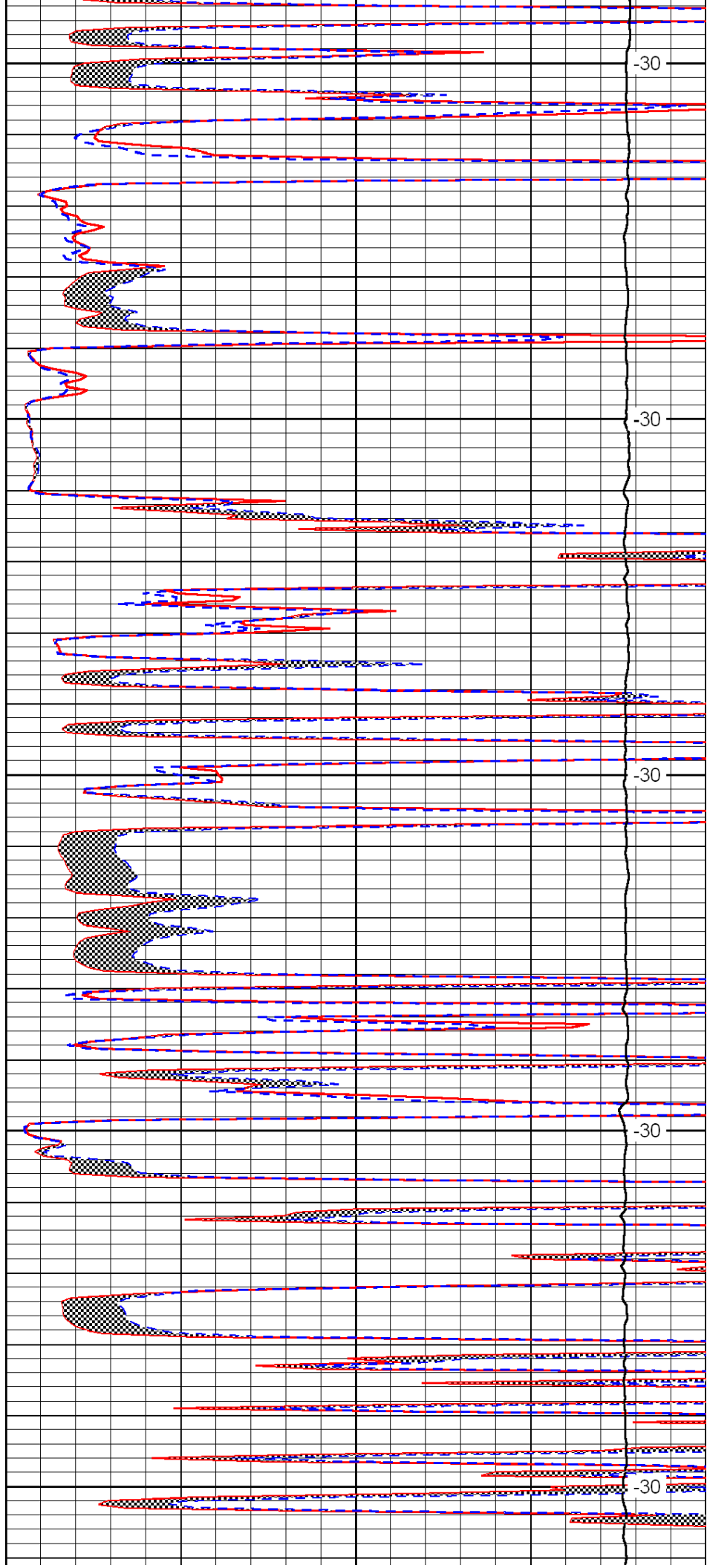
3700

3750

3800

3850

3900



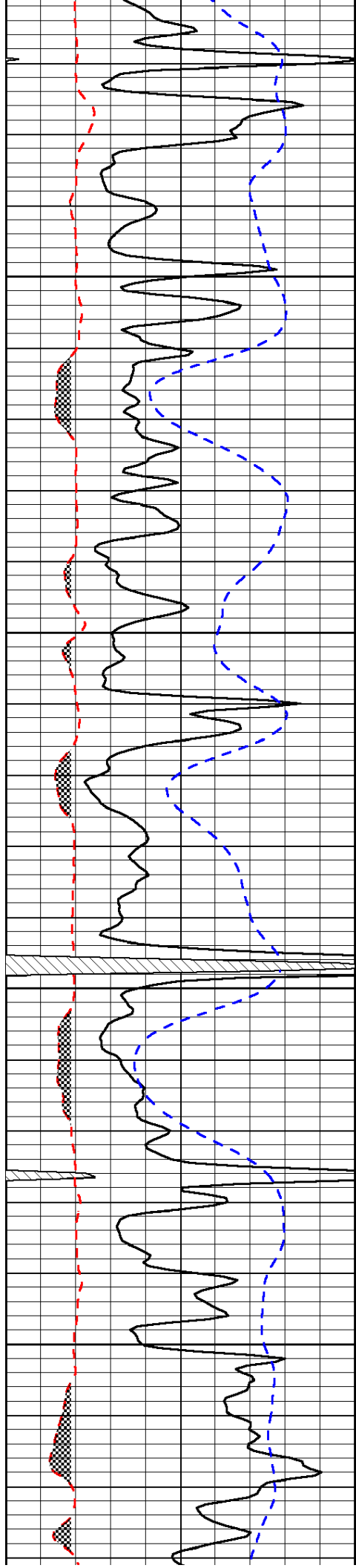
-30

-30

-30

-30

-30

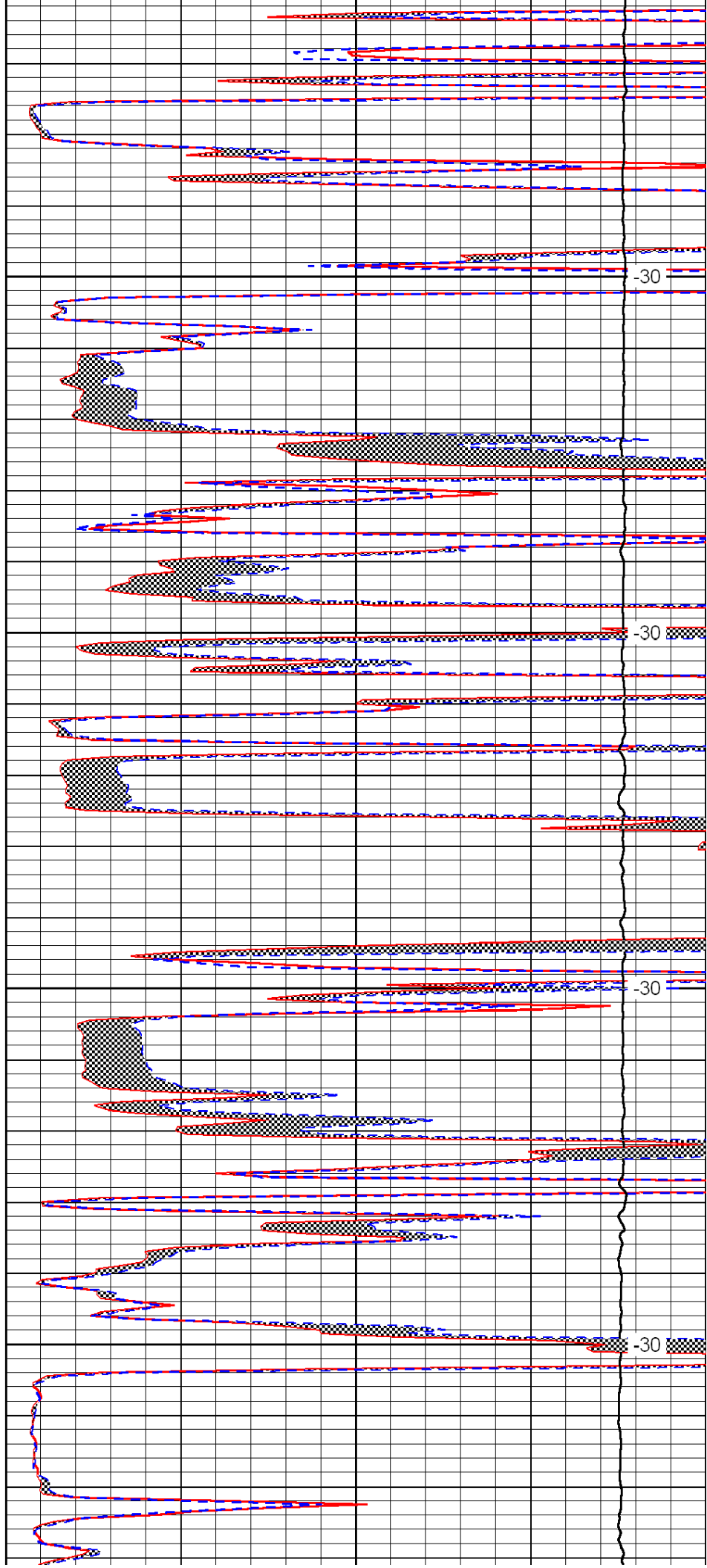


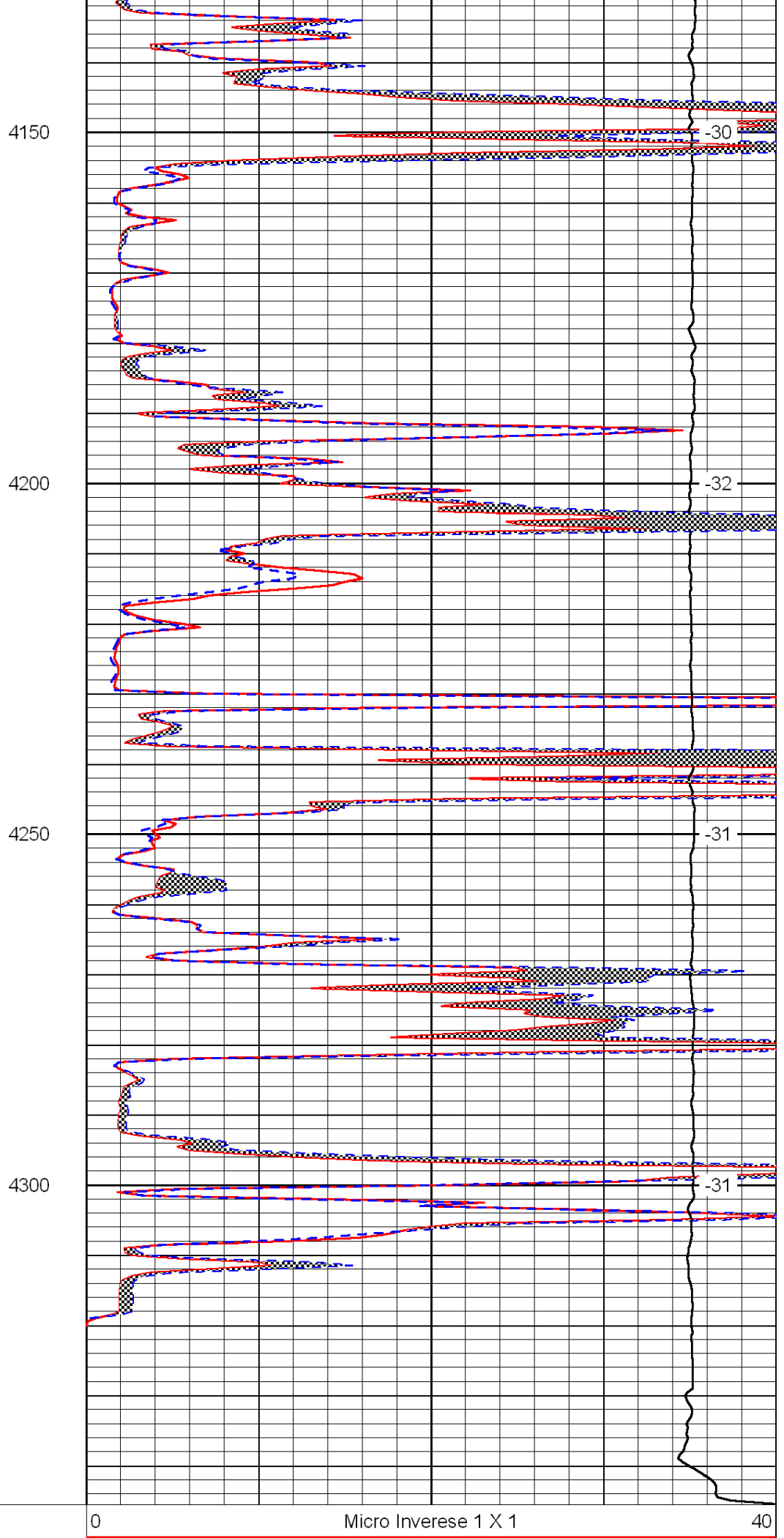
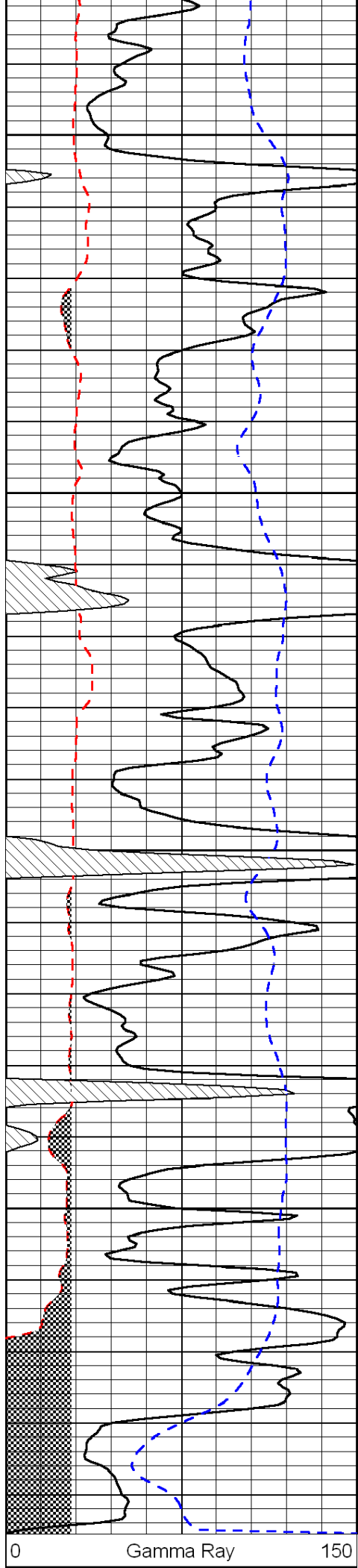
3950

4000

4050

4100





6	Micro Log Caliper (GAPI)	16
-200	SP (mV)	0

0	Micro Normal 2"	40
15000	Line Weight	0

LSPD
