



DIGITAL LOG (785) 625-3858

Dual Induction Log

API No. 15-145-21618-00-00

Company **Downing-Nelson Oil Company, Inc.**
 Well **Frantz-Saxton Unit No. 1-19**
 Field **Wildcat**
 County **Pawnee** State **Kansas**

Location **N/2 - S/2 - S/2 - N/2
2210' FNL & 2607' FEL**

Sec: **19** Twp: **20 S** Rge: **20 W**

Permanent Datum **Ground Level** Elevation **2182**
 Log Measured From **Kelly Bushing** 6 Ft. Above Perm. Datum
 Drilling Measured From **Kelly Bushing**

Other Services
 CNL/CDL
 MEL/BHCS
 Elevation
 K.B. 2188
 D.F. 2182
 G.L. 2182

Date	11/22/2010
Run Number	One
Depth Driller	4337
Depth Logger	4339
Bottom Logged Interval	4338
Top Log Interval	1150
Casing Driller	8.625 @ 1161
Casing Logger	1154
Bit Size	7.875
Type Fluid in Hole	Chemical
Salinity, ppm CL	3.000
Density / Viscosity	9.2 57
pH / Fluid Loss	10.0 8.8
Source of Sample	Flowline
Rm @ Meas. Temp	1.70 @ 60
Rmf @ Meas. Temp	1.28 @ 60
Rmc @ Meas. Temp	2.30 @ 60
Source of Rmf / Rmc	Charts
Rm @ BHT	0.85 @ 119
Operating Rig Time	5 Hours
Max Rec. Temp. F	119
Equipment Number	15
Location	Hays
Recorded By	B. Becker
Witnessed By	Marc Downing

<<< Fold Here >>>

All interpretations are opinions based on inferences from electrical or other measurements and we cannot and do not guarantee the accuracy or correctness of any interpretation, and we shall not, except in the case of gross or willful negligence on our part, be liable or responsible for any loss, costs, damages, or expenses incurred or sustained by anyone resulting from any interpretation made by any of our officers, agents or employees. These interpretations are also subject to our general terms and conditions set out in our current Price Schedule.

Comments

Thank you for using Log-Tech, Inc.
 (785) 625-3858

Alexander, Ks;
 11 South to W Rd;
 1-1/2 West; South Into

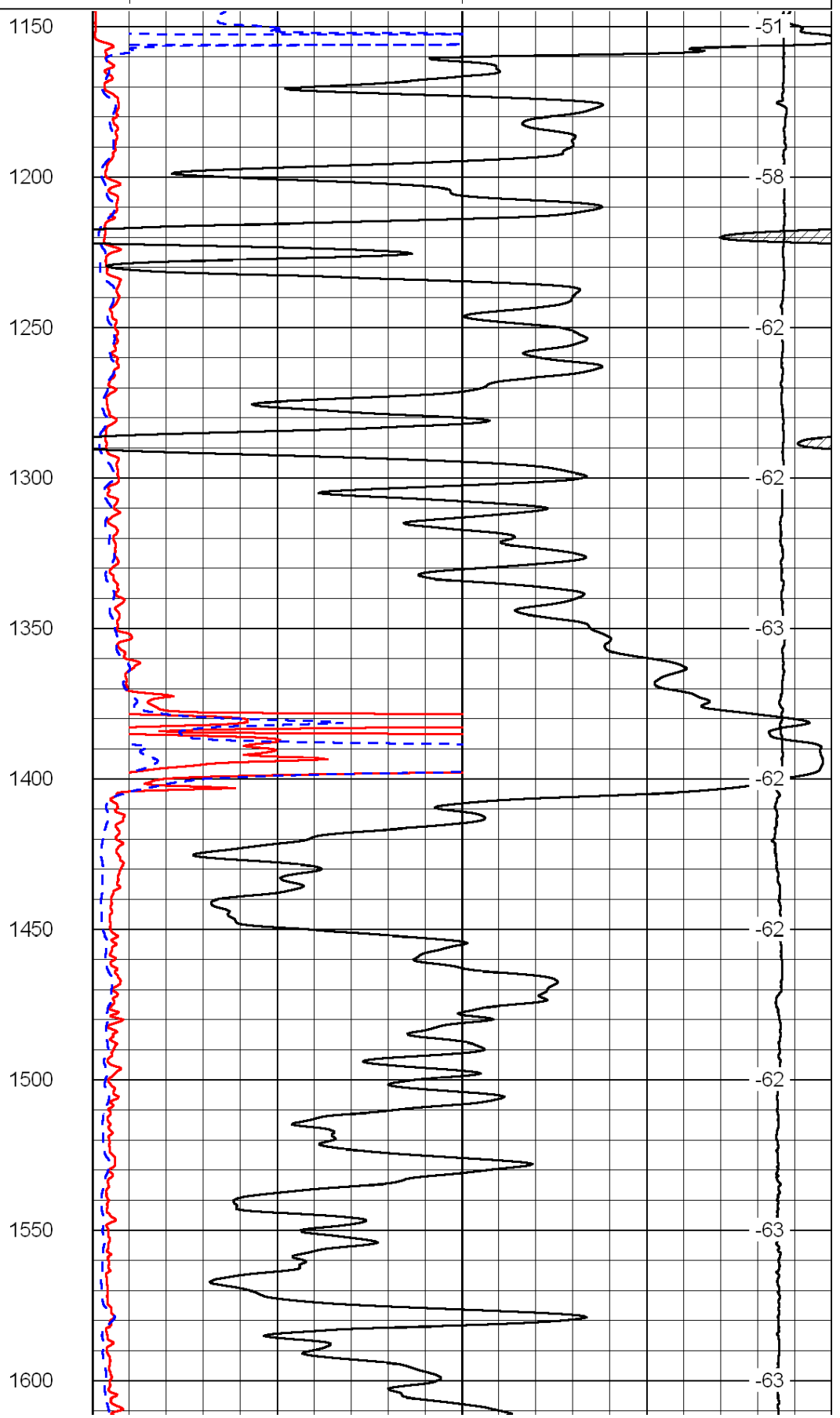
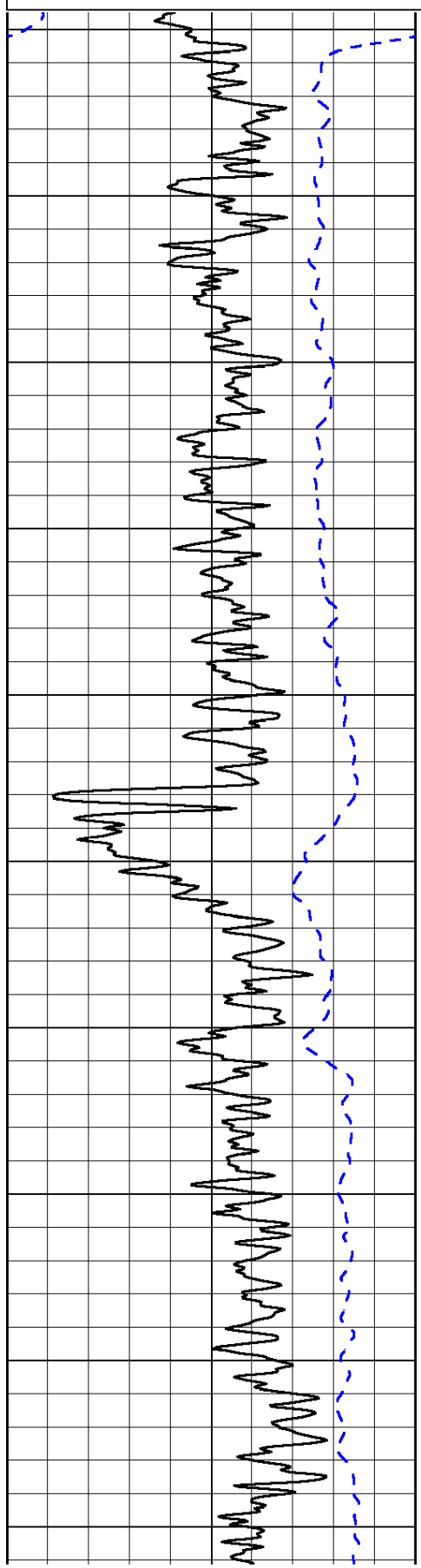
0	Gamma Ray	150
-200	SP (mV)	0

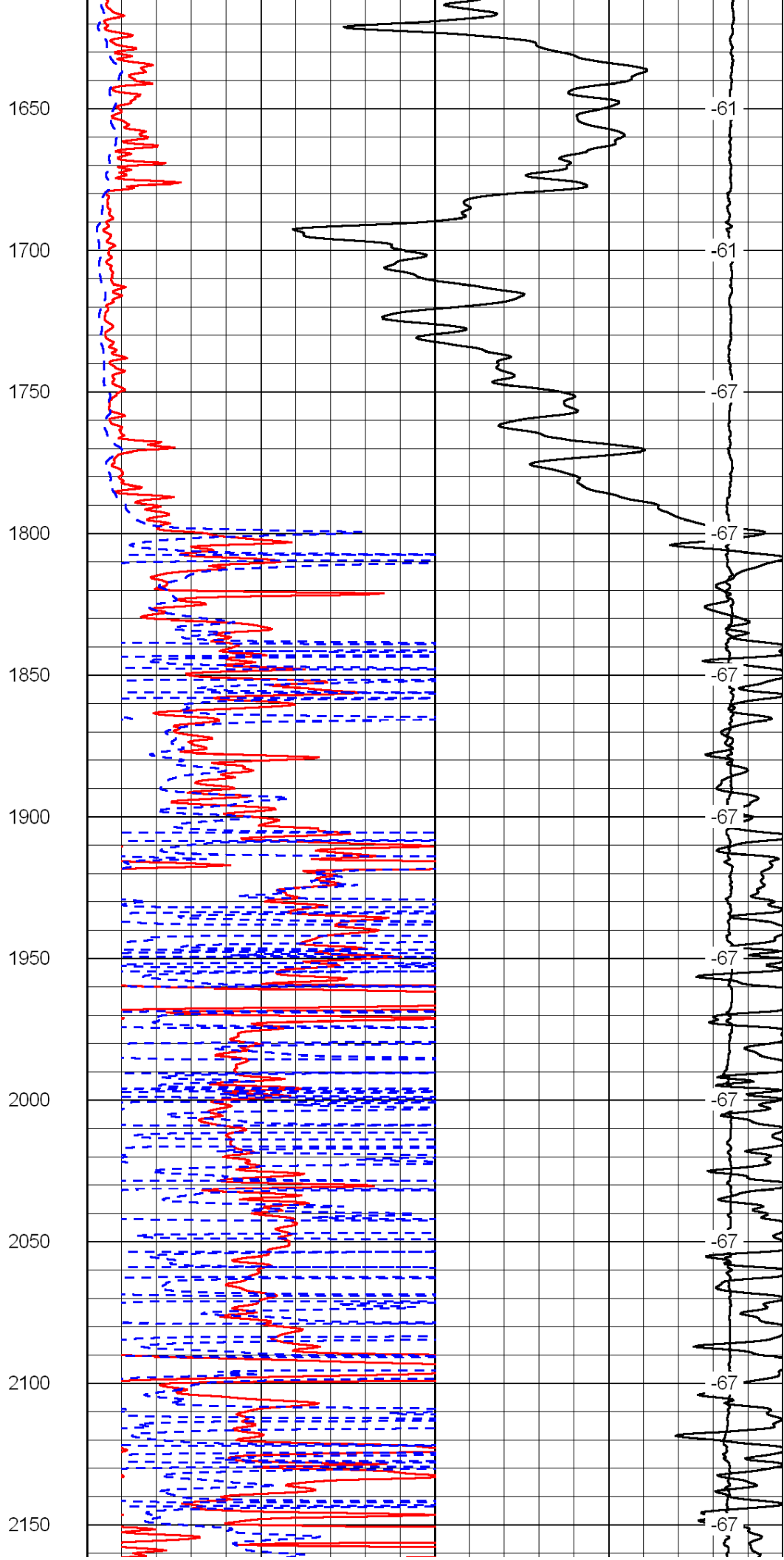
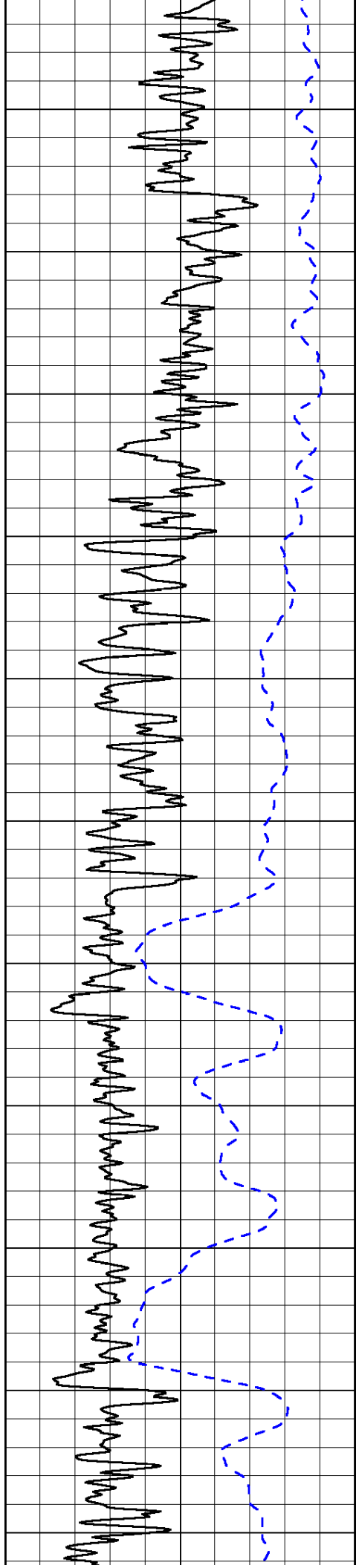
0	Shallow Resistivity	50
0	Deep Resistivity	50

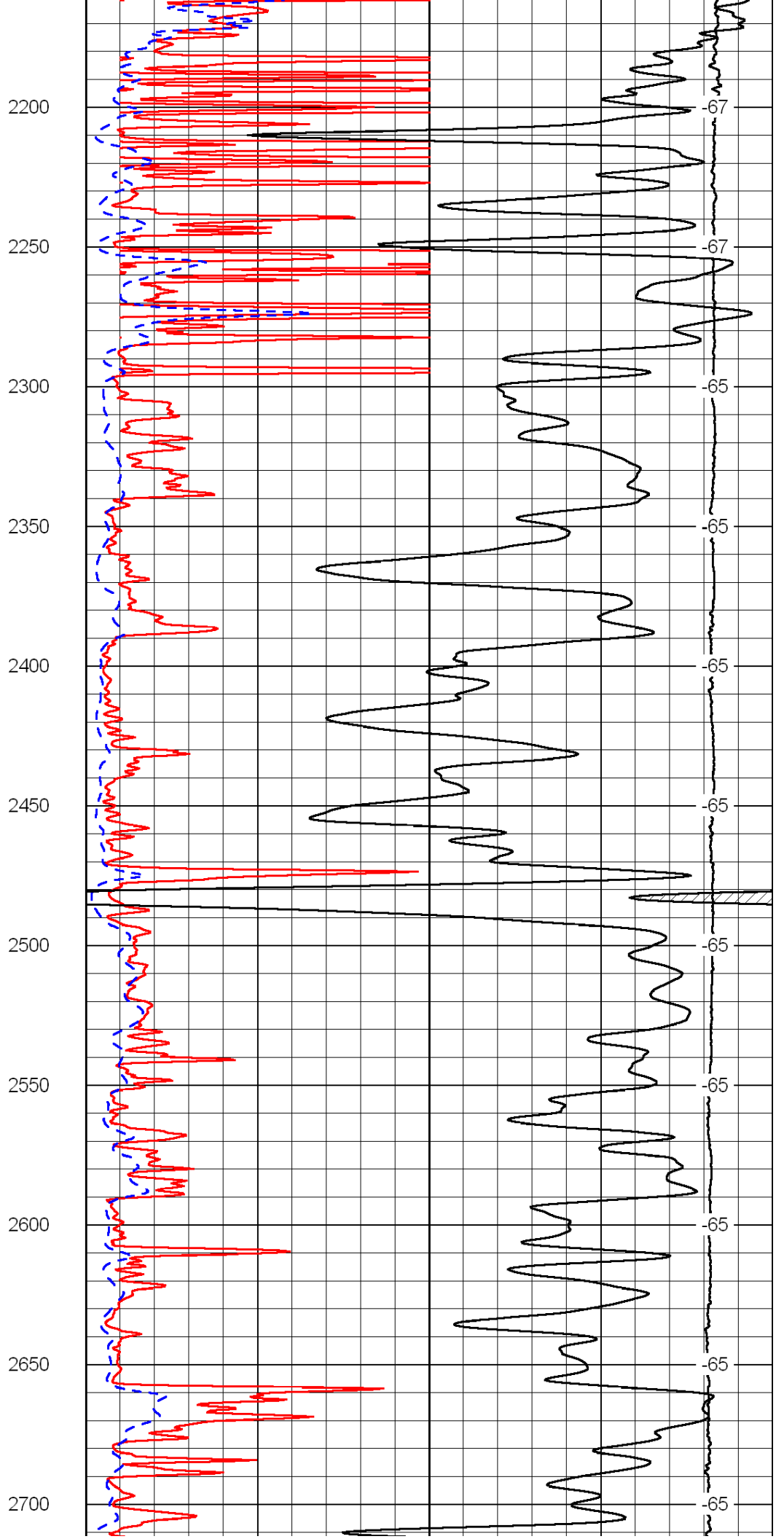
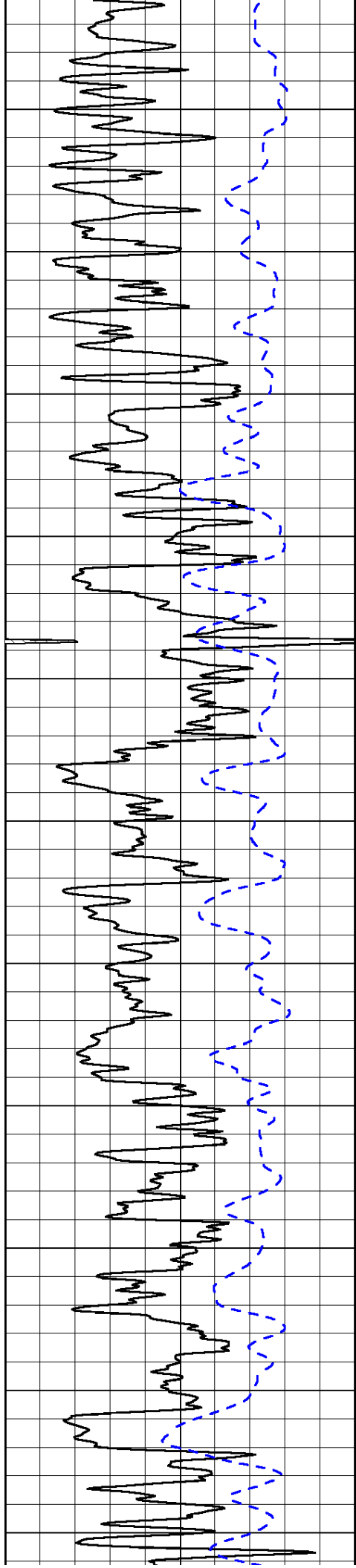
LSPD

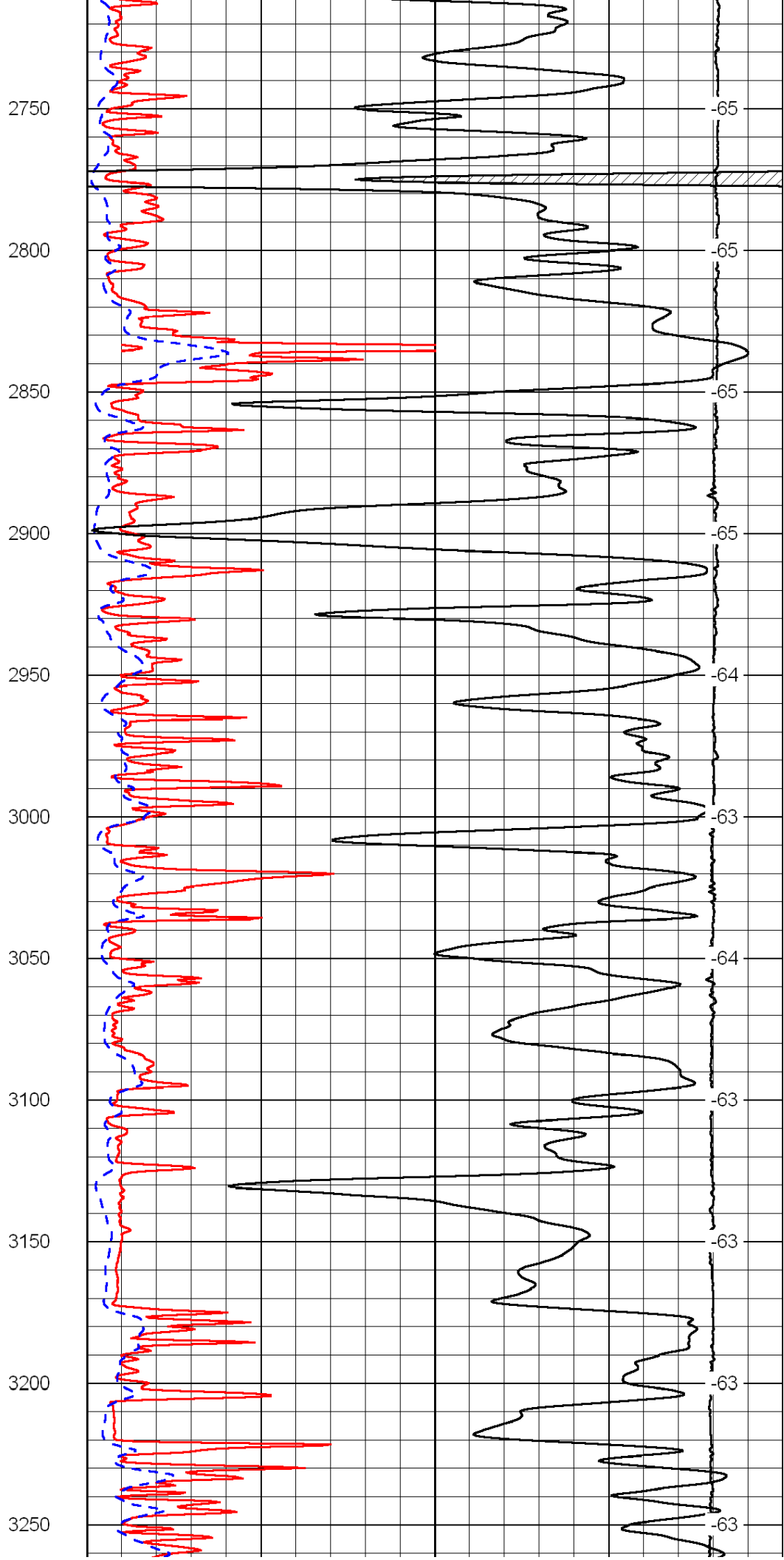
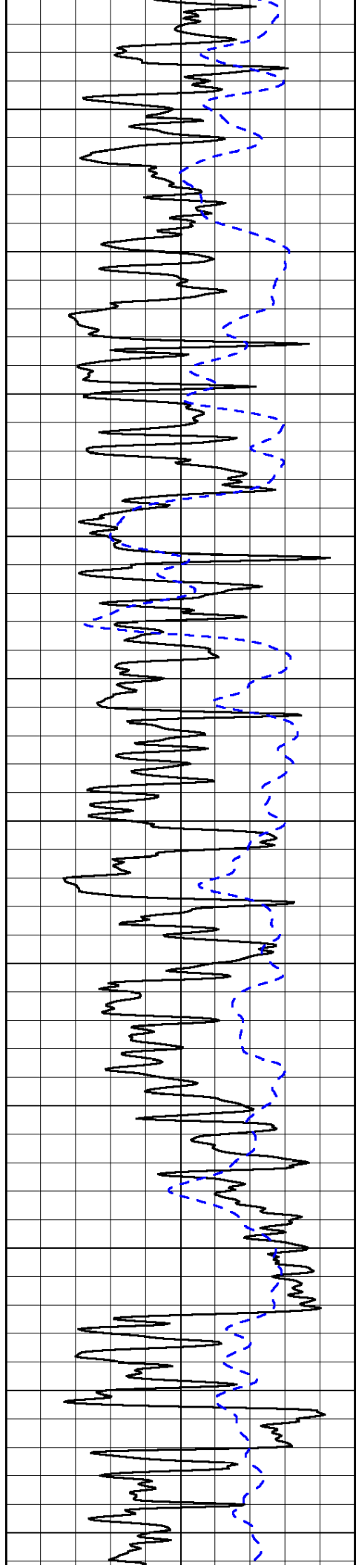
1000	Conductivity	0
15000	Line Tension	0

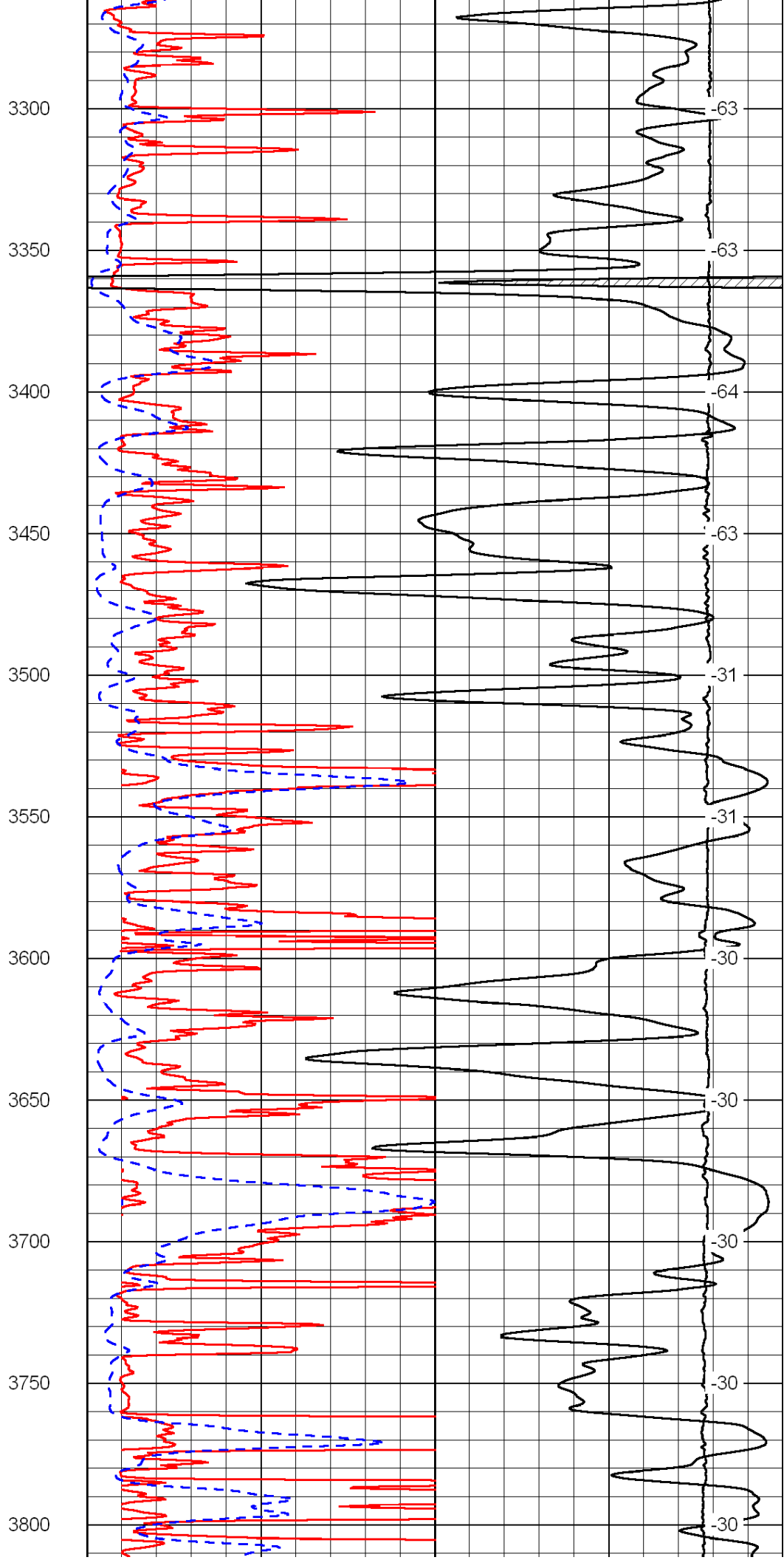
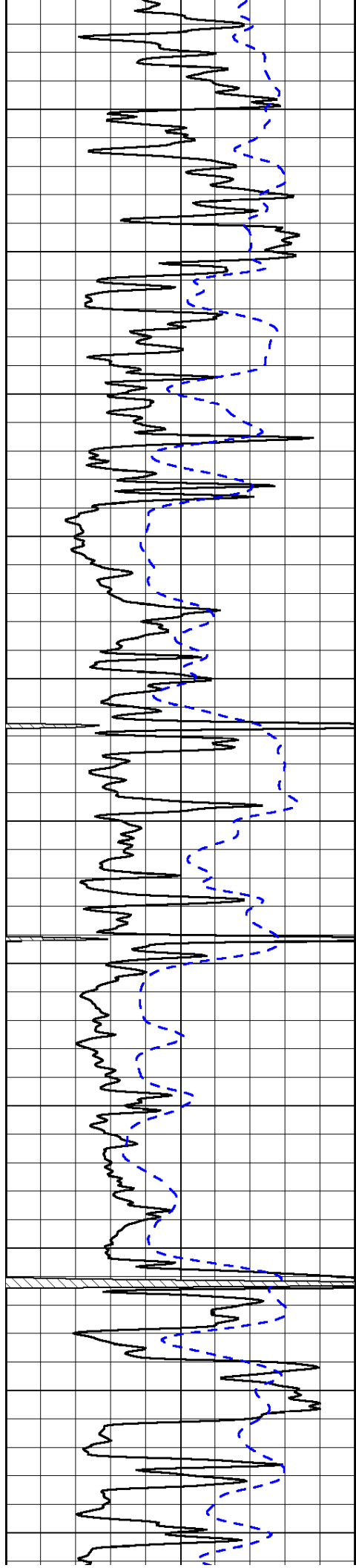
50	Shallow Resistivity	500
50	Deep Resistivity	500











-200	SP (mV)	0
------	---------	---

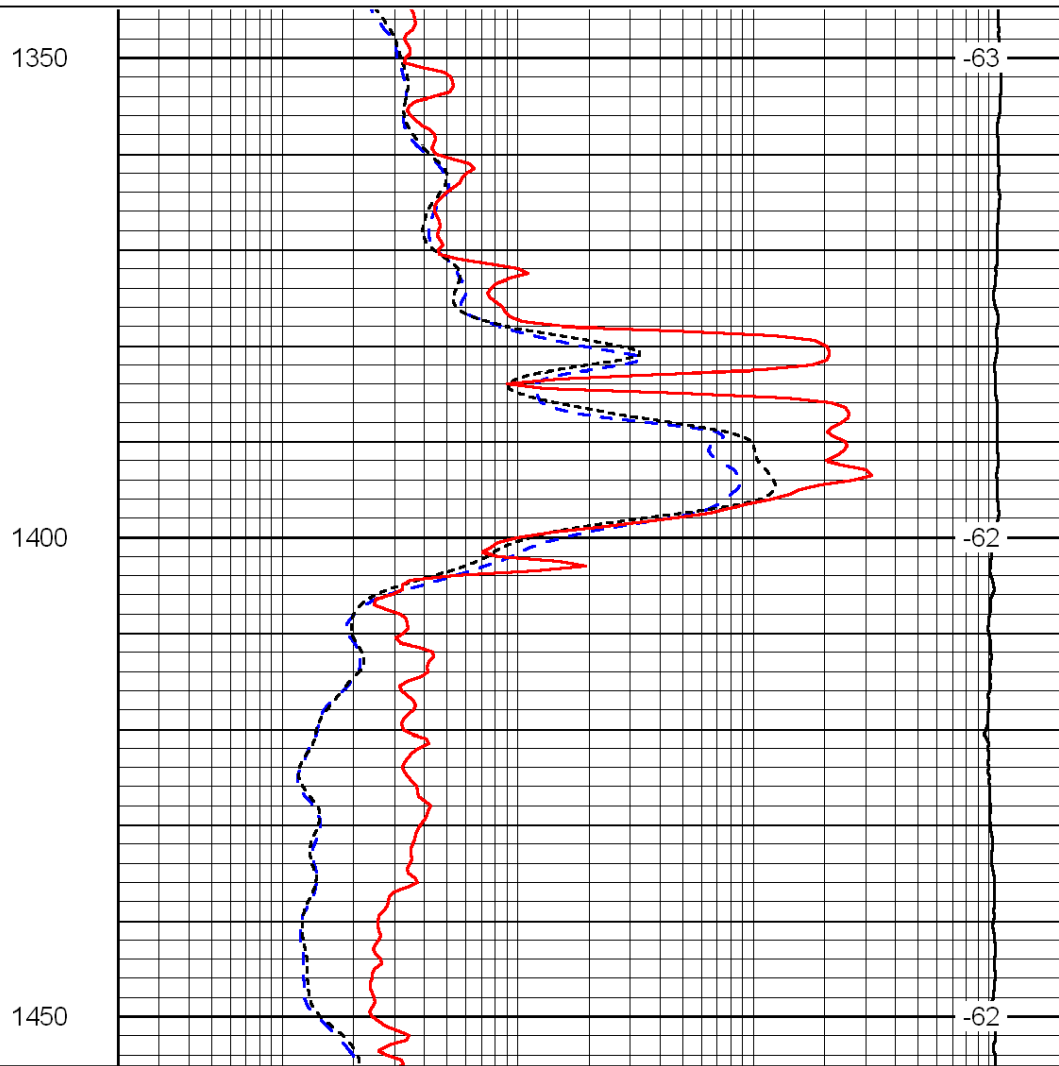
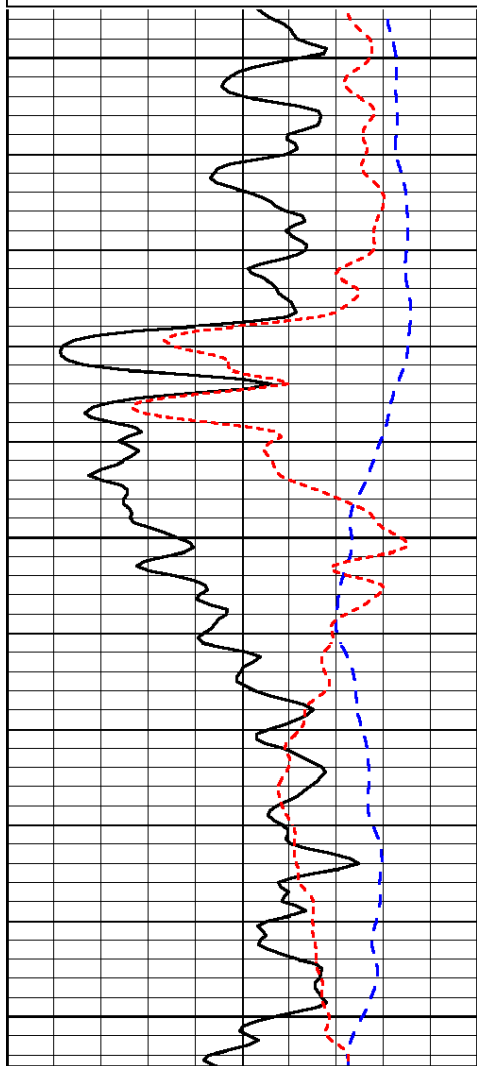
0	Deep Resistivity	50
1000	Conductivity	0
15000	Line Tension	0
50	Shallow Resistivity	500
50	Deep Resistivity	500

Database File: c:\warrior\data\downing-nelson_frantz-saxton unit no. 1-19\downelhd.db
 Dataset Pathname: DIL/dnstk
 Presentation Format: dil
 Dataset Creation: Mon Nov 22 08:16:02 2010
 Charted by: Depth in Feet scaled 1:240

0	Gamma Ray	150
-200	SP (mV)	0
-160	Rxo / Rt	40

0.2	Deep Resistivity	2000
0.2	Medium Resistivity	2000
0.2	Shallow Resistivity	2000
15000	Line Tension	0

LSPD



0	Gamma Ray	150
-200	SP (mV)	0
-160	Rxo / Rt	40

0.2	Deep Resistivity	2000
0.2	Medium Resistivity	2000
0.2	Shallow Resistivity	2000
15000	Line Tension	0

LSPD

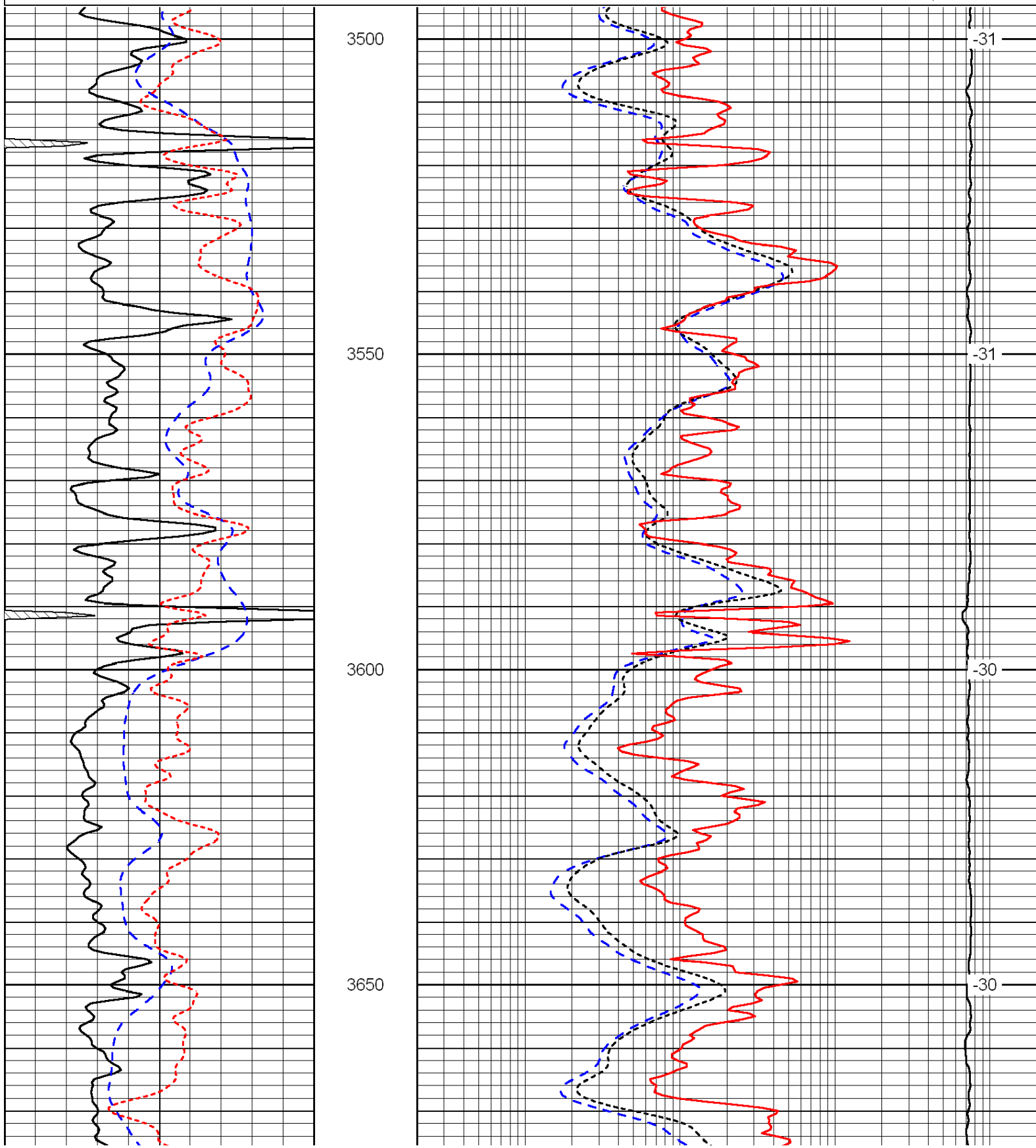
Database File: c:\warrior\data\downing-nelson_frantz-saxton unit no. 1-19\downelhd.db

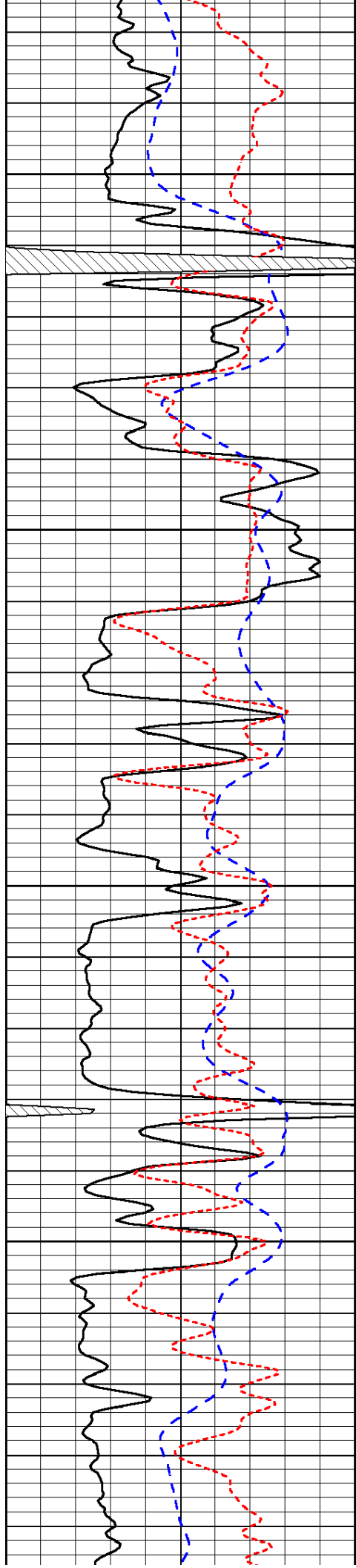
Dataset Pathname: DIL/dnstk
 Presentation Format: dil
 Dataset Creation: Mon Nov 22 08:16:02 2010
 Charted by: Depth in Feet scaled 1:240

0	Gamma Ray	150
-200	SP (mV)	0
-160	Rxo / Rt	40

0.2	Deep Resistivity	2000
0.2	Medium Resistivity	2000
0.2	Shallow Resistivity	2000
15000	Line Tension	0

LSPD



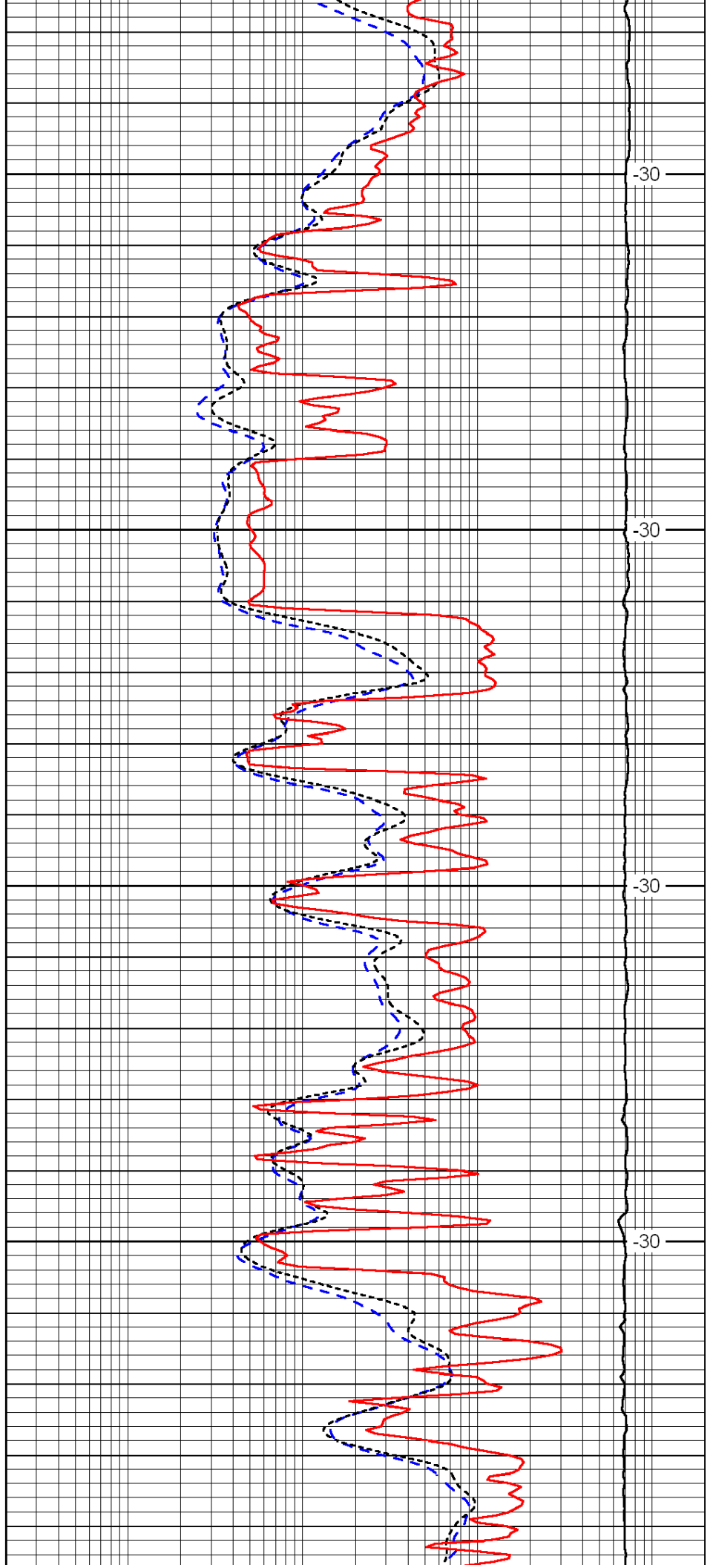


3700

3750

3800

3850

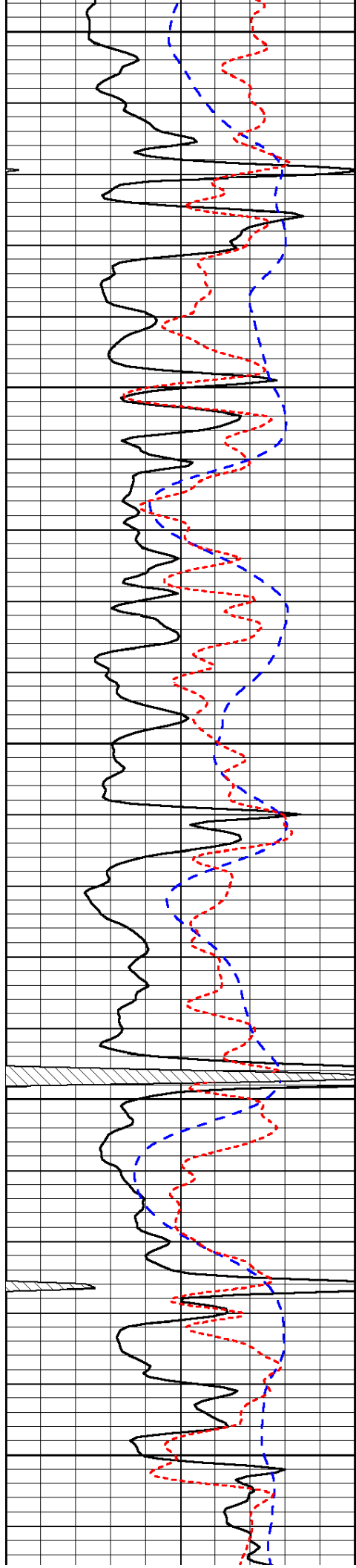


-30

-30

-30

-30



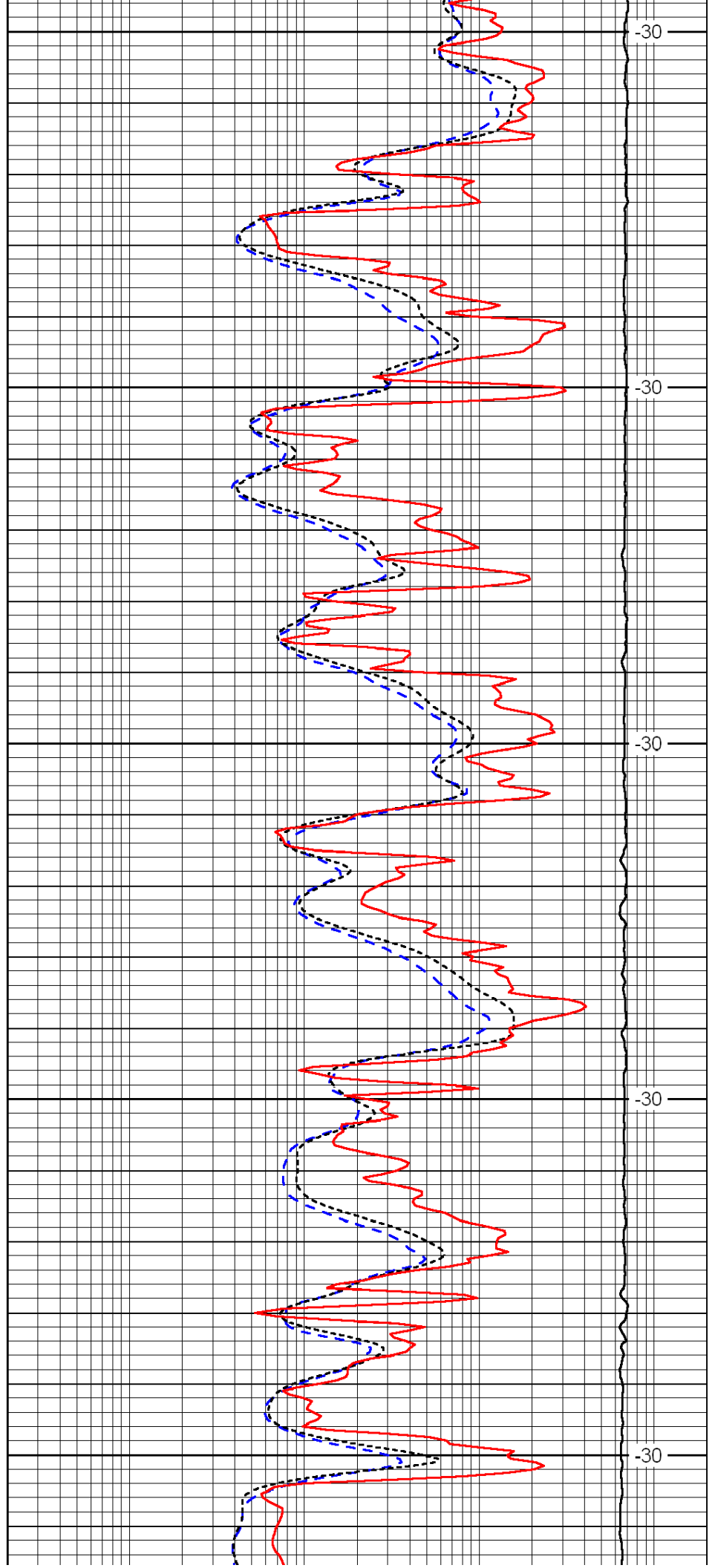
3900

3950

4000

4050

4100



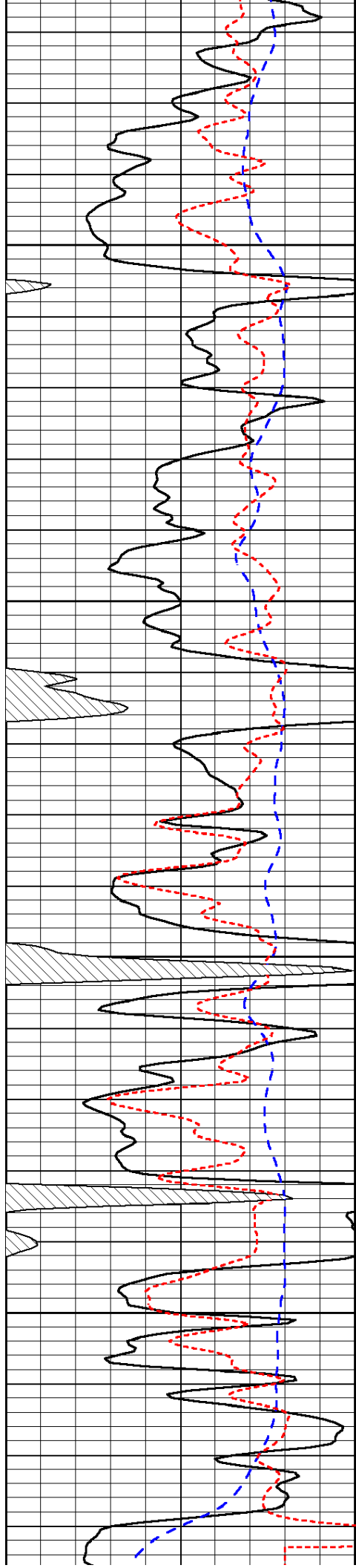
-30

-30

-30

-30

-30

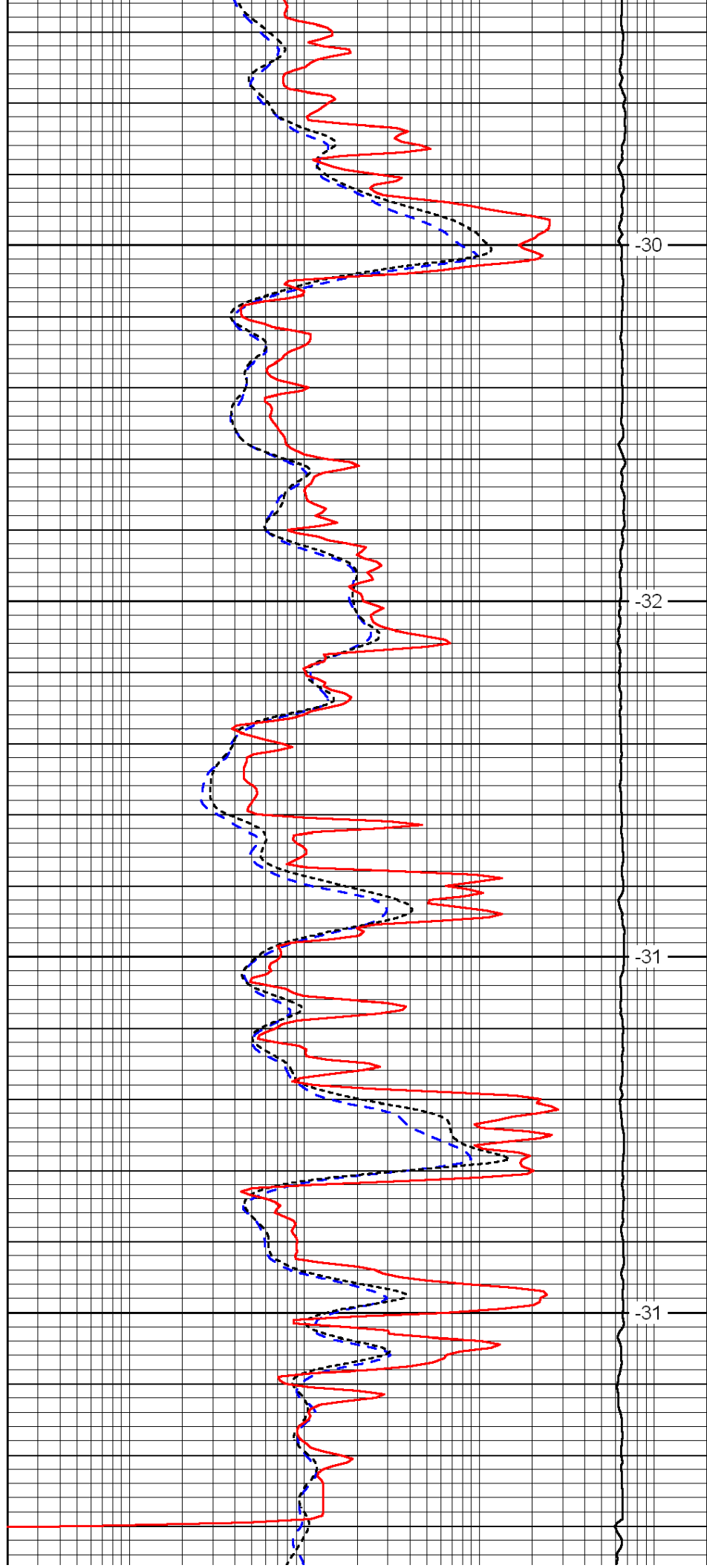


4150

4200

4250

4300

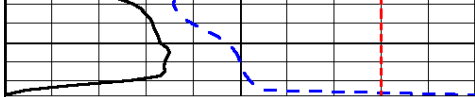


-30

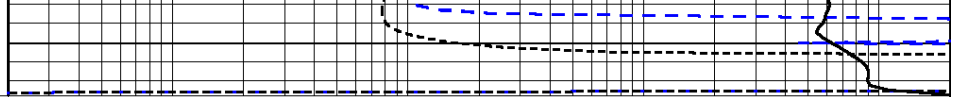
-32

-31

-31



0	Gamma Ray	150
-200	SP (mV)	0
-160	Rxo / Rt	40



0.2	Deep Resistivity	2000
0.2	Medium Resistivity	2000
0.2	Shallow Resistivity	2000
15000	Line Tension	0

LSPD