



Dual Compensated Porosity Log

DIGITAL LOG (785) 625-3858

API No. 15-145-21618-00-00

Company: Downing-Nelson Oil Company, Inc.
 Well: Frantz-Saxton Unit No. 1-19
 Field: Wildcat
 County: Pawnee State Kansas

Location: N/2 - S/2 - S/2 - N/2
 2210' FNL & 2607' FEL

Other Services: DIL, MEI/BHCS

Permanent Datum: Ground Level Elevation 2182
 Log Measured From: Kelly Bushing 6 Ft. Above Perm. Datum
 Drilling Measured From: Kelly Bushing

Sec: 19 Twp: 20 S Rge: 20 W
 Date: 11/22/2010

Run Number: One
 Type Log: CNL / CDL
 Depth Driller: 4337
 Depth Logger: 4339
 Bottom Logged Interval: 4318
 Top Logged Interval: 3500
 Type Fluid In Hole: Chemical
 Salinity, PPM CL: 3,000
 Density: 9.2
 Level: Full
 Max. Rec. Temp. F: 119
 Operating Rig Time: 5 Hours
 Equipment -- Location: 15 Hays
 Recorded By: B. Becker
 Witnessed By: Marc Downing

Borehole Record				Casing Record			
Run No.	Bit	From	To	Size	Wgt.	From	To
1	12.25	00	1161	8.625	24#	00	1161
2	7.875	1161	4337				

<<< Fold Here >>>

All interpretations are opinions based on inferences from electrical or other measurements and we cannot and do not guarantee the accuracy or correctness of any interpretation, and we shall not, except in the case of gross or willful negligence on our part, be liable or responsible for any loss, costs, damages, or expenses incurred or sustained by anyone resulting from any interpretation made by any of our officers, agents or employees. These interpretations are also subject to our general terms and conditions set out in our current Price Schedule.

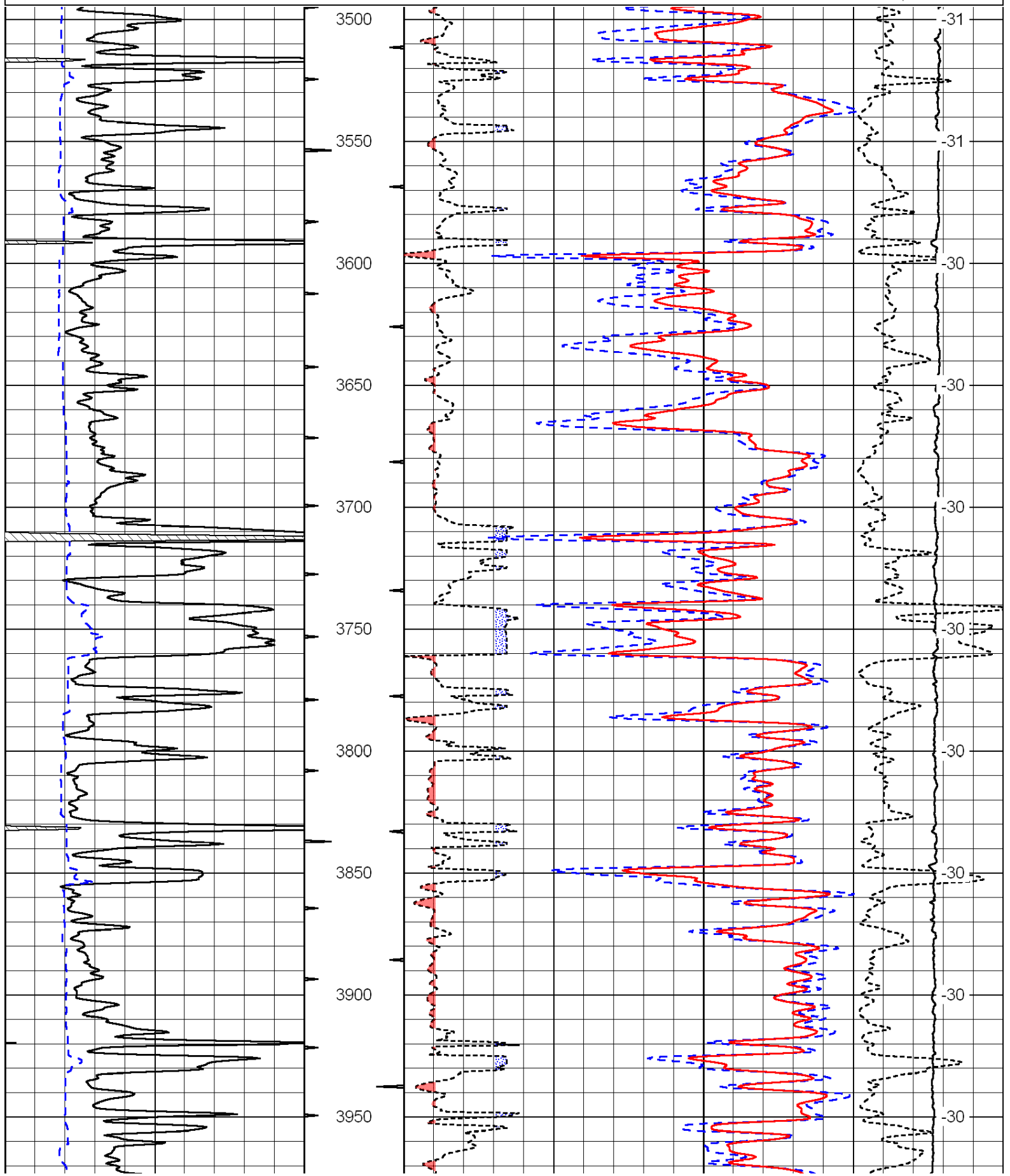
Comments

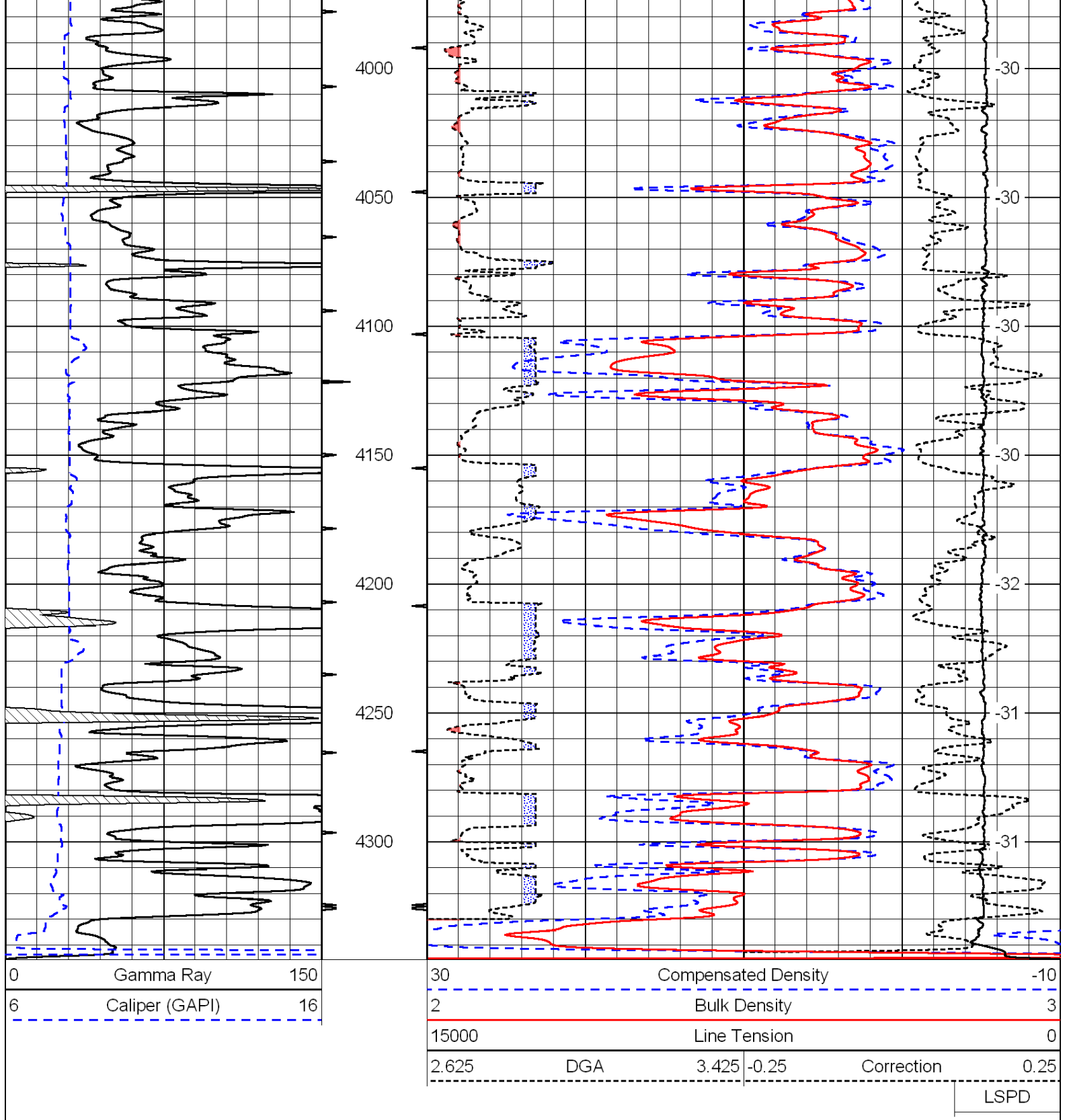
Thank you for using Log-Tech, Inc.
 (785) 625-3858

Alexander, Ks;
 11 South to W Rd;
 1-1/2 West; South Into

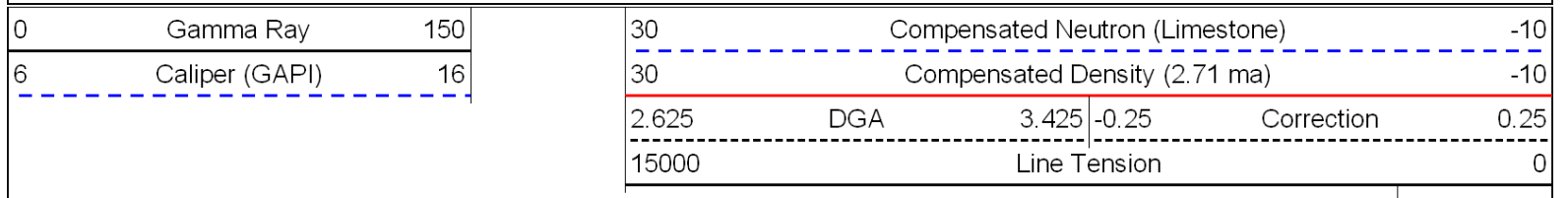
0	Gamma Ray	150
6	Caliper (GAPI)	16

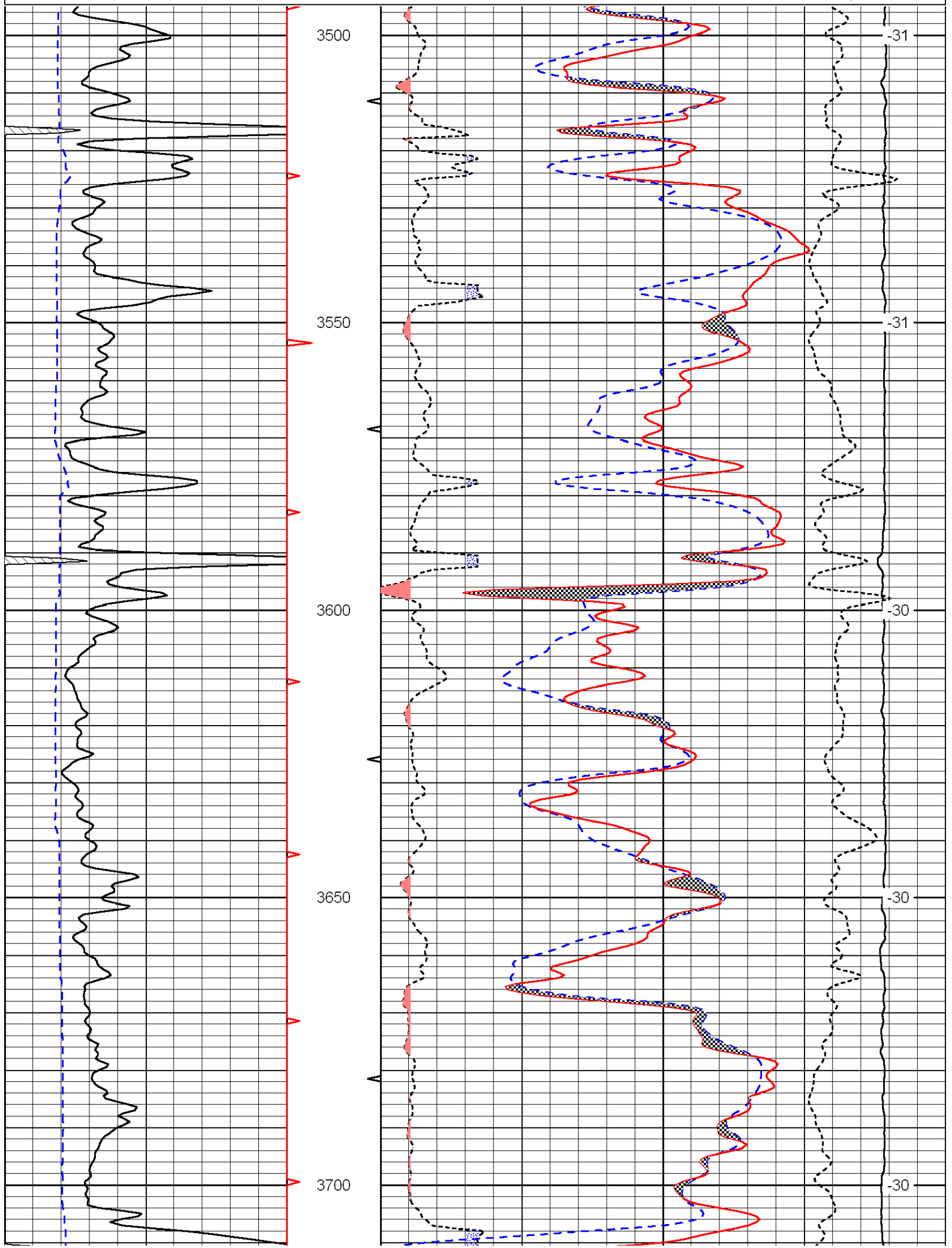
30	Compensated Density		-10
2	Bulk Density		3
15000	Line Tension		0
2.625	DGA	3.425	-0.25
			Correction
			0.25
LSPD			

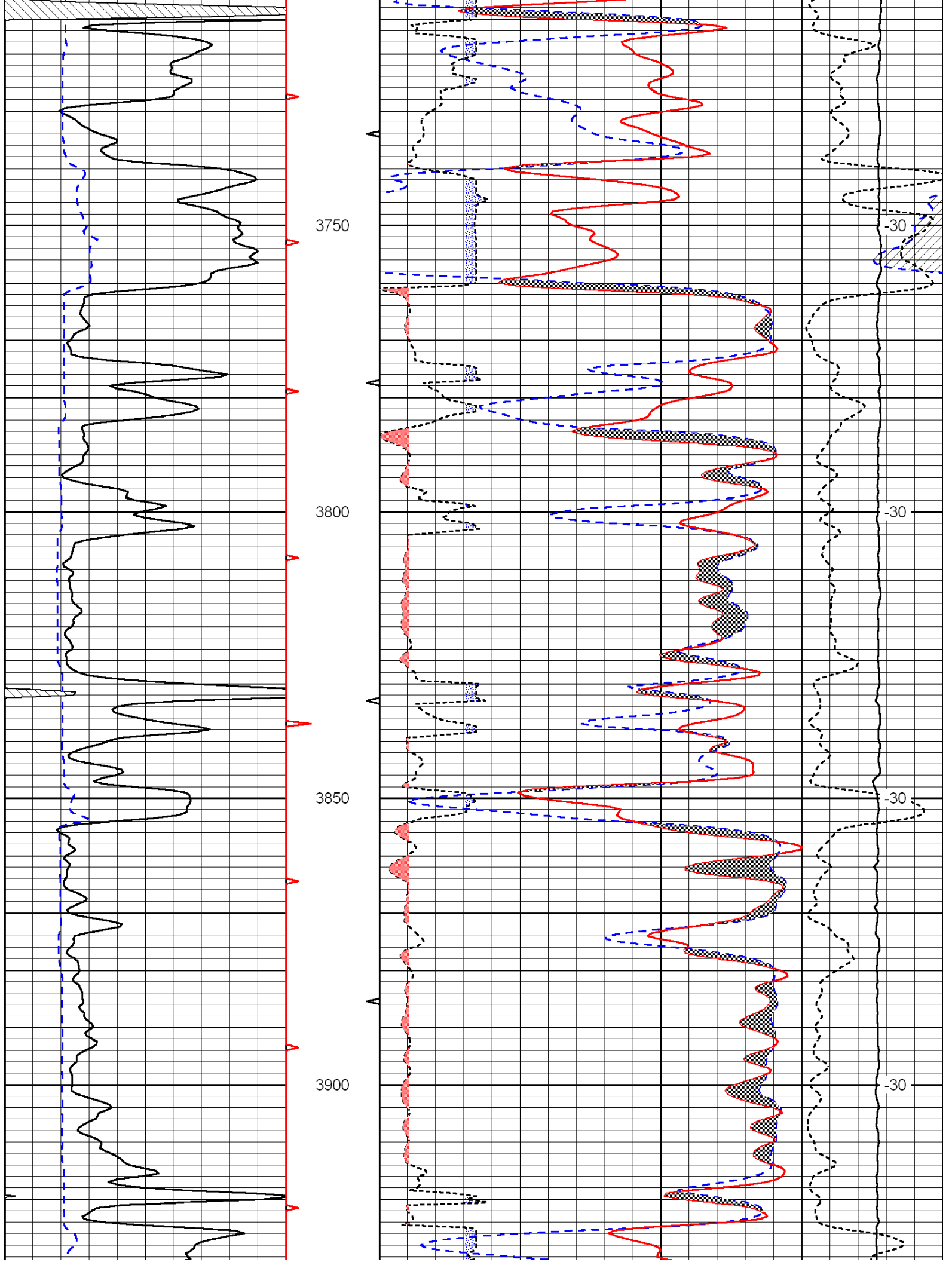


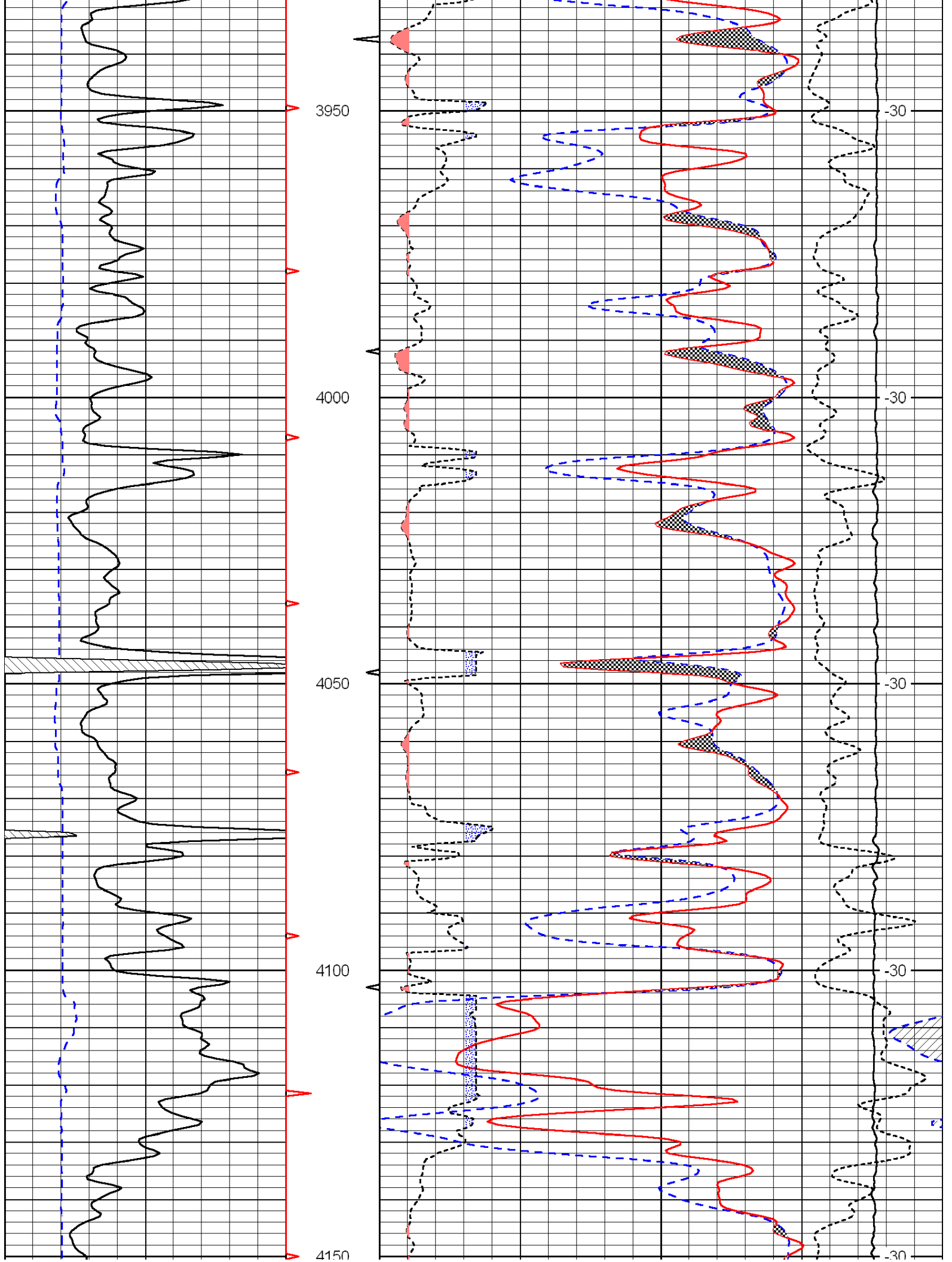


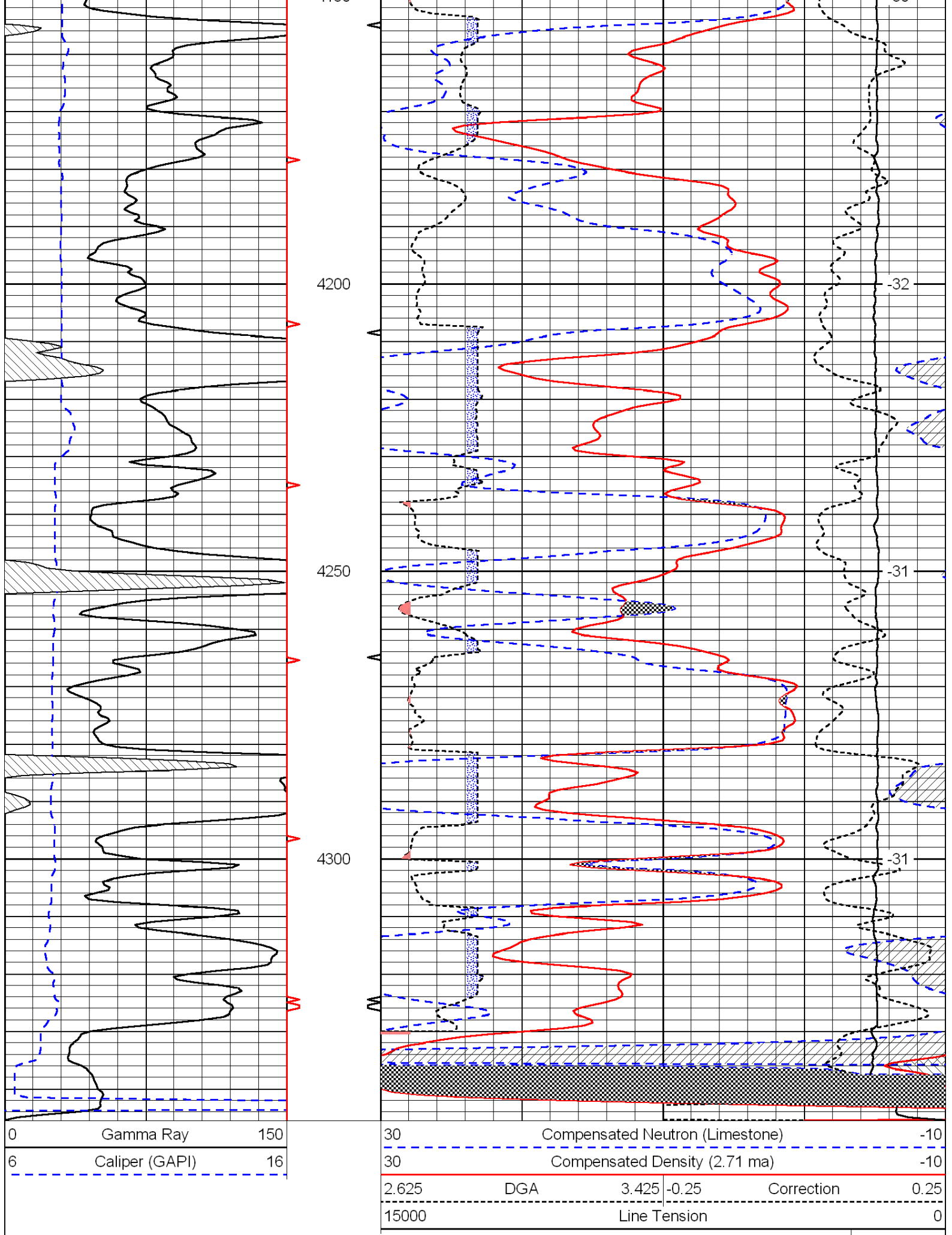
Database File: c:\warrior\data\downing-nelson_frantz-saxton unit no. 1-19\downelhd.db
 Dataset Pathname: DIL/dnstk
 Presentation Format: cndlspec
 Dataset Creation: Mon Nov 22 08:16:02 2010
 Charted by: Depth in Feet scaled 1:240











LSPD

