



Dual Compensated
Porosity Log

DIGITAL LOG (785) 625-3858

API No. 15-145-21,614-00-00

Company: Downing-Nelson Oil Co., Inc.
Well: Marvin Saxton Unit No. 1-30
Field: Steffen Field
County: Pawnee State Kansas

Location: 210' FNL & 1835' FWL

Sec: 30 Twp: 20 S Rge: 20 W

Other Services: DIL, MEI/BHCS

Permanent Datum: Ground Level Elevation 2180
Log Measured From: Kelly Bushing 8 Ft. Above Perm. Datum
Drilling Measured From: Kelly Bushing

K.B. 2188
D.F. G.L. 2180

Date: 11/15/2010

Run Number: One

Type Log: CNL / CDL

Depth Driller: 4343

Depth Logger: 4344

Bottom Logged Interval: 4323

Top Logged Interval: 3300

Type Fluid In Hole: Chemical

Salinity, PPM CL: 5,000

Density: 9.2

Level: Full

Max. Rec. Temp. F: 121

Operating Rig Time: 5 1/2 Hours

Equipment -- Location: 4 Hays

Recorded By: K. Bange

Witnessed By: Ron Nelson

Borehole Record				Casing Record			
Run No.	Bit	From	To	Size	Wgt.	From	To
1	12.25	00	1160	8.625	24#	00	1160
2	7.875	1160	4343				

<<< Fold Here >>>

All interpretations are opinions based on inferences from electrical or other measurements and we cannot and do not guarantee the accuracy or correctness of any interpretation, and we shall not, except in the case of gross or willful negligence on our part, be liable or responsible for any loss, costs, damages, or expenses incurred or sustained by anyone resulting from any interpretation made by any of our officers, agents or employees. These interpretations are also subject to our general terms and conditions set out in our current Price Schedule.

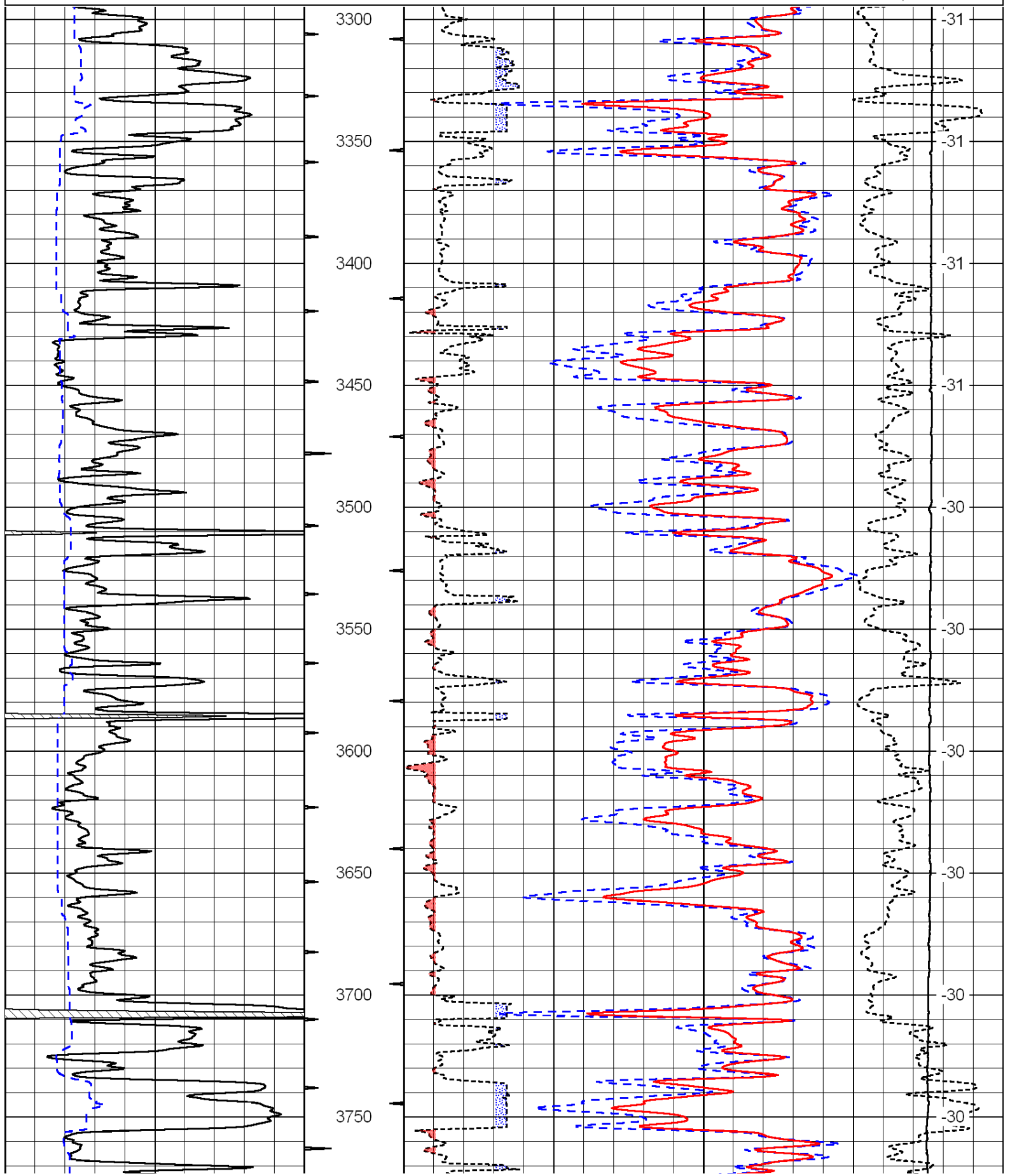
Comments

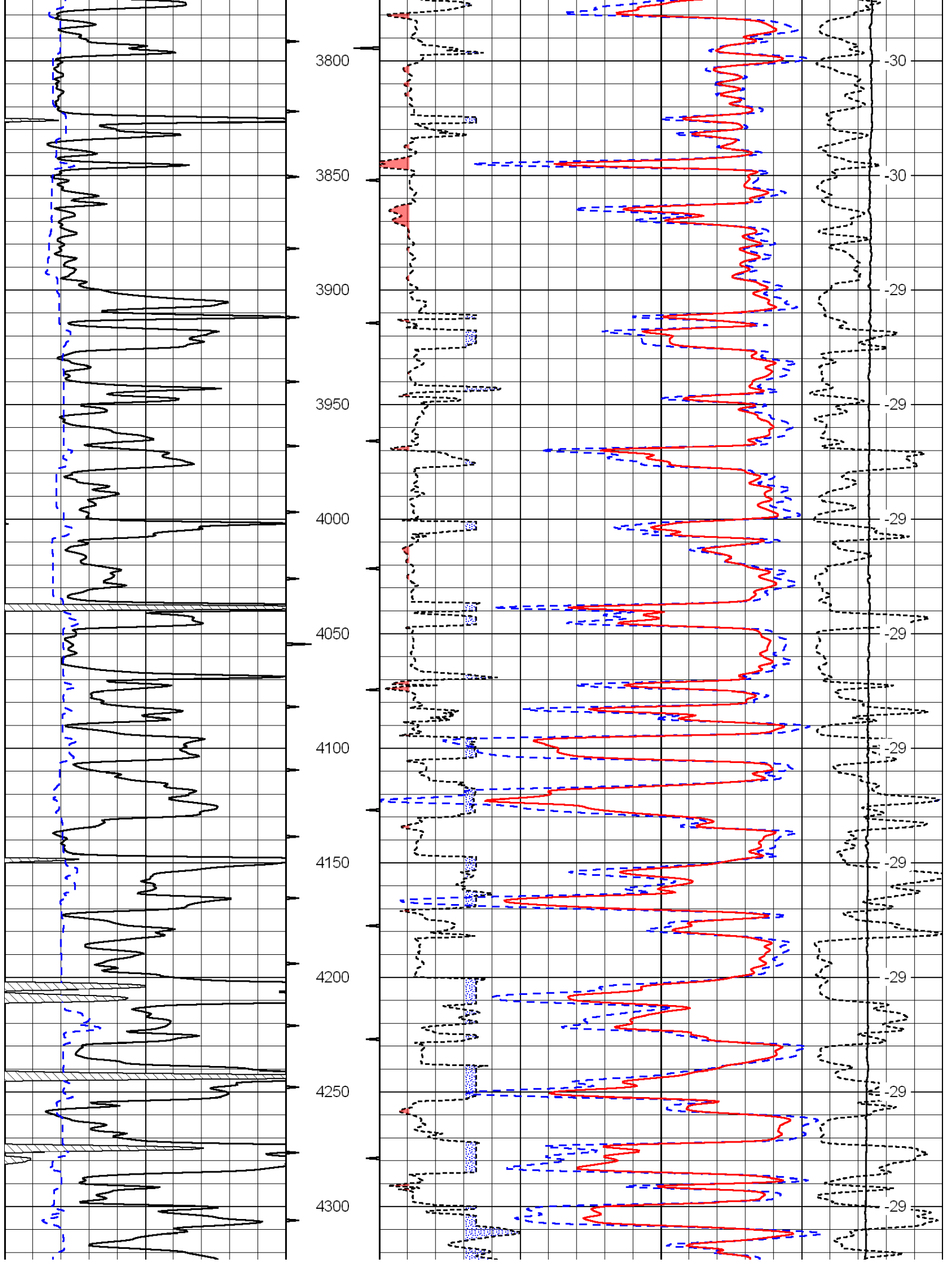
Thank you for using Log-Tech, Inc.
(785) 625-3858

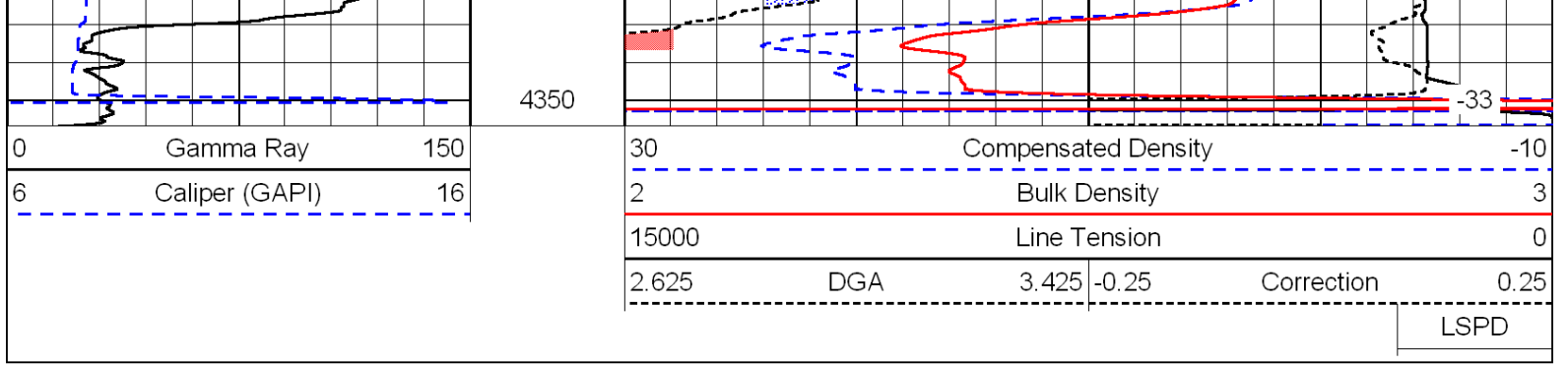
Alexander, S 11 to W rd, 1 W, 1 S, 1/2 W into

0	Gamma Ray	150
6	Caliper (GAPI)	16

30	Compensated Density		-10
2	Bulk Density		3
15000	Line Tension		0
2.625	DGA	3.425	-0.25
Correction			0.25
LSPD			







Database File: c:\warrior\data\downing-nelson_marvin saxton unit #1-30\downel111510hd.db
 Dataset Pathname: dil/dnelstack
 Presentation Format: cndlspec
 Dataset Creation: Mon Nov 15 05:58:11 2010
 Charted by: Depth in Feet scaled 1:240

