



**Borehole Compensated  
Sonic Log**

**DIGITAL LOG (785) 625-3858**

API No.	15-145-21,614-00-00		
Company	Downing-Nelson Oil Co., Inc.		
Well	Marvin Saxton Unit No. 1-30		
Field	Steffen Field		
County	Pawnee	State	Kansas
Location	210' FNL & 1835' FWL		
Sec:	30	Twp:	20 S
		Rge:	20 W
Permanent Datum	Ground Level	Elevation	2180
Log Measured From	Kelly Bushing	8 Ft. Above Perm. Datum	
Drilling Measured From	Kelly Bushing		
Date	11/15/2010	Other Services	CNL/CDL MEL/DIL
Run Number	Two	Elevation	K.B. 2188 D.F. 2188 G.L. 2180
Type Log	BHC Sonic		
Depth Driller	4343		
Depth Logger	4344		
Bottom Logged Interval	4333		
Top Logged Interval	1150		
Type Fluid In Hole	Chemical		
Salinity, PPM CL	5,000		
Density	9.2		
Level	Full		
Max. Rec. Temp. F	121		
Operating Rig Time	5 1/2 Hours		
Equipment -- Location	4 Hays		
Recorded By	K. Bange		
Witnessed By	Ron Nelson		

Borehole Record				Casing Record			
Run No.	Bit	From	To	Size	Wgt.	From	To
1	12.25	00	1160	8.625	24#	00	1160
2	7.875	1160	4343				

<<< Fold Here >>>

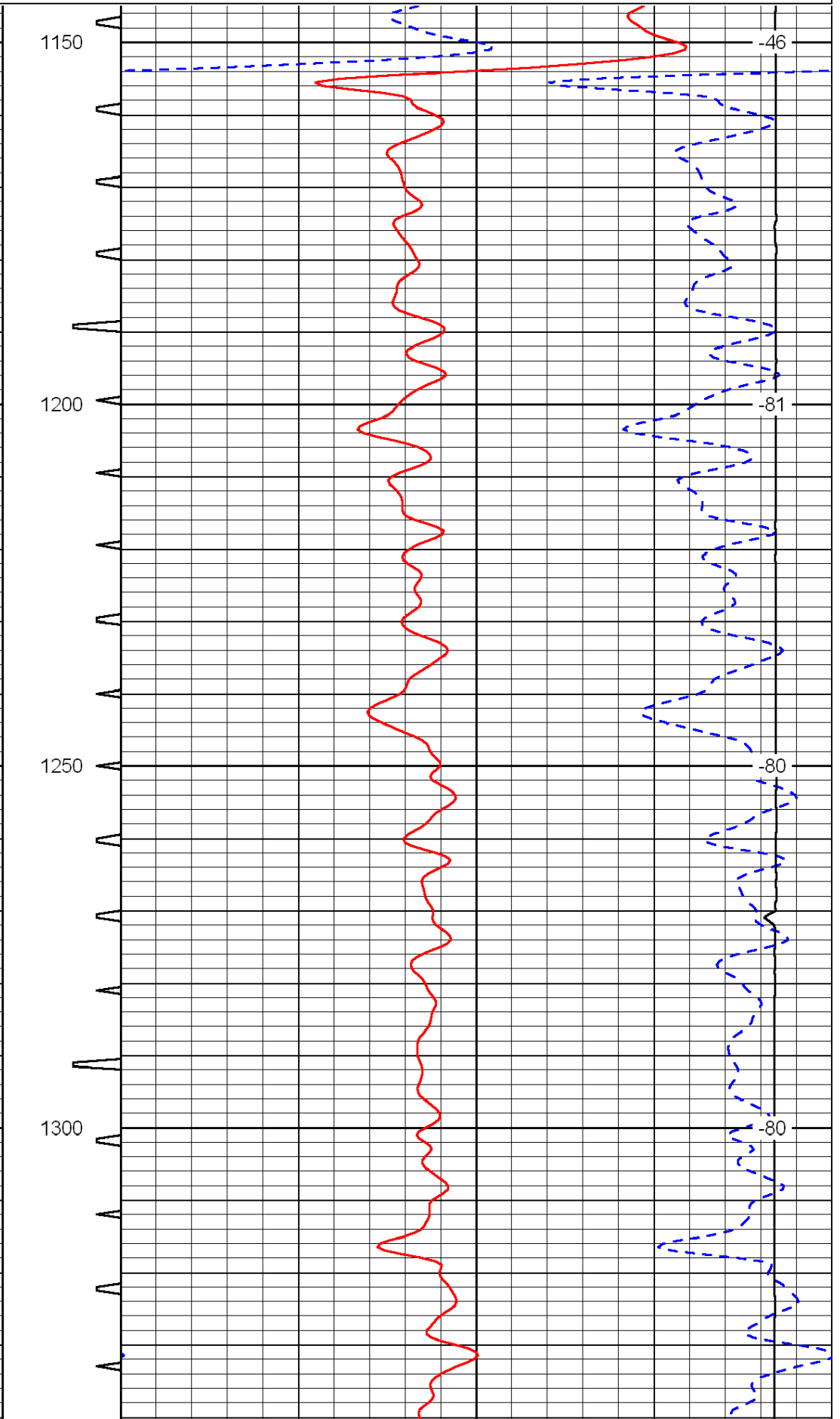
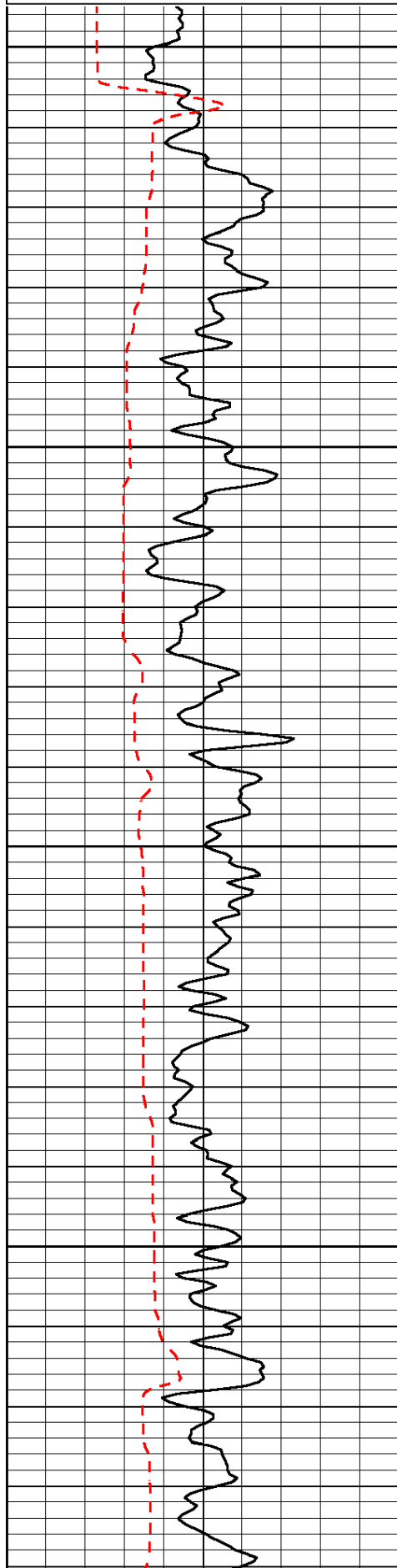
All interpretations are opinions based on inferences from electrical or other measurements and we cannot and do not guarantee the accuracy or correctness of any interpretation, and we shall not, except in the case of gross or willful negligence on our part, be liable or responsible for any loss, costs, damages, or expenses incurred or sustained by anyone resulting from any interpretation made by any of our officers, agents or employees. These interpretations are also subject to our general terms and conditions set out in our current Price Schedule.

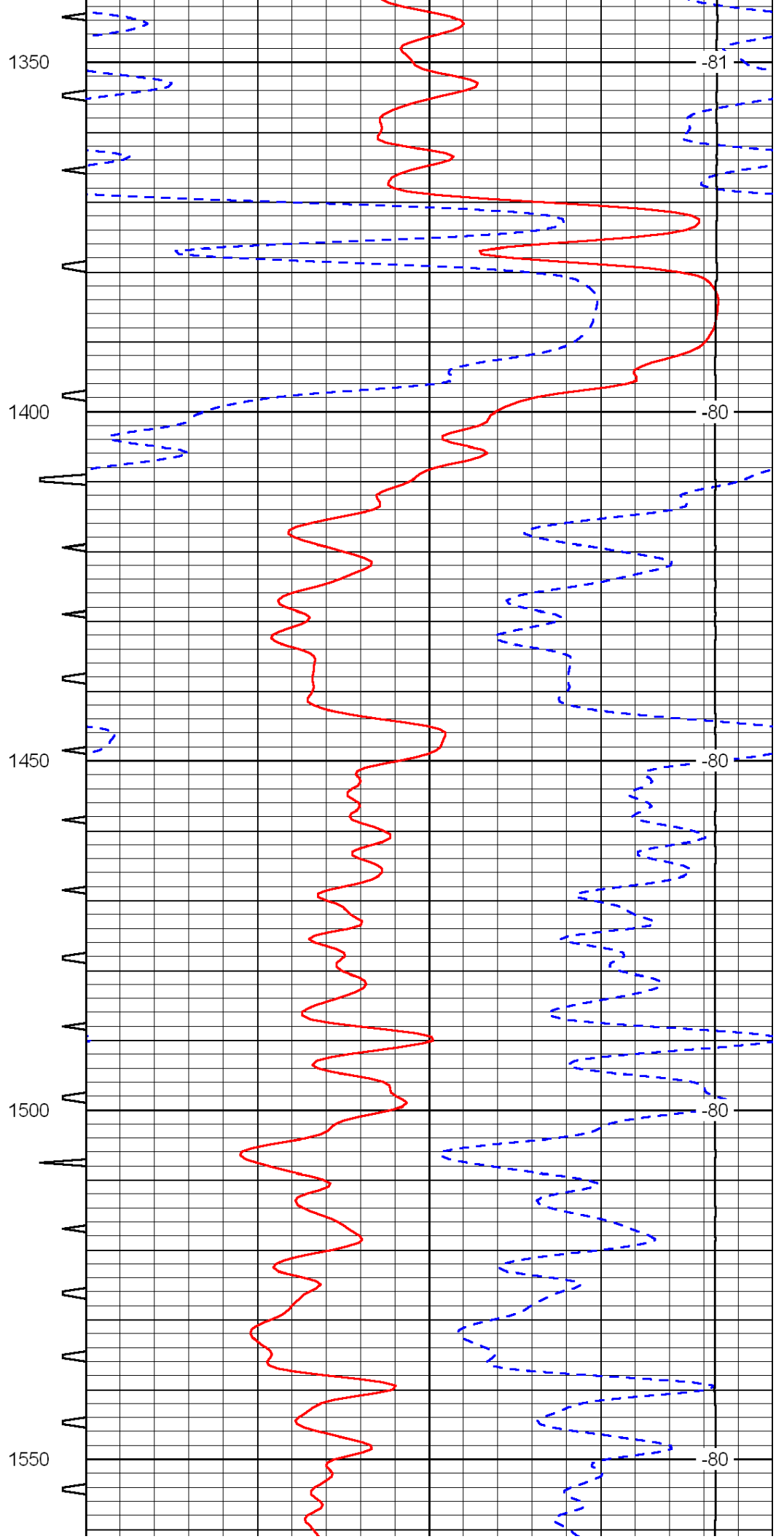
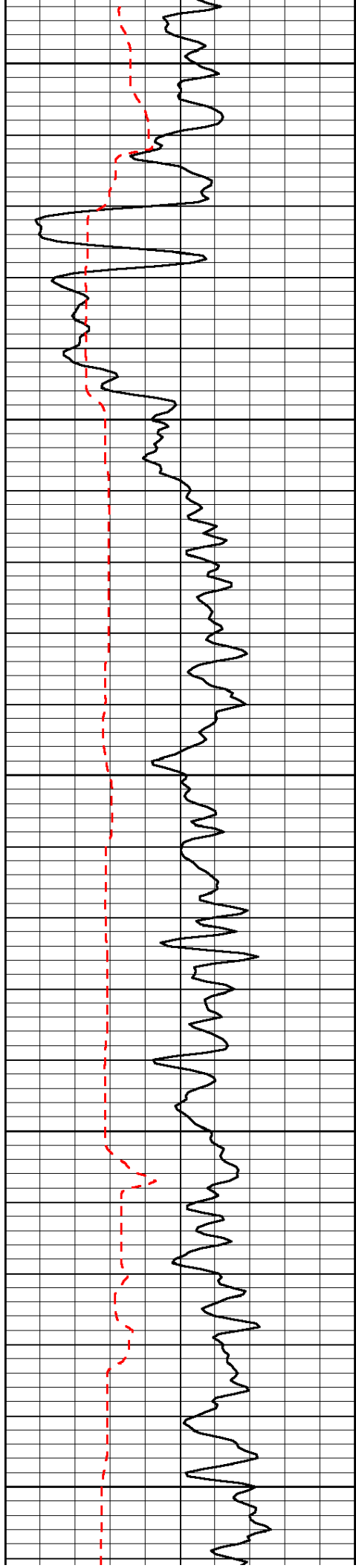
**Comments**

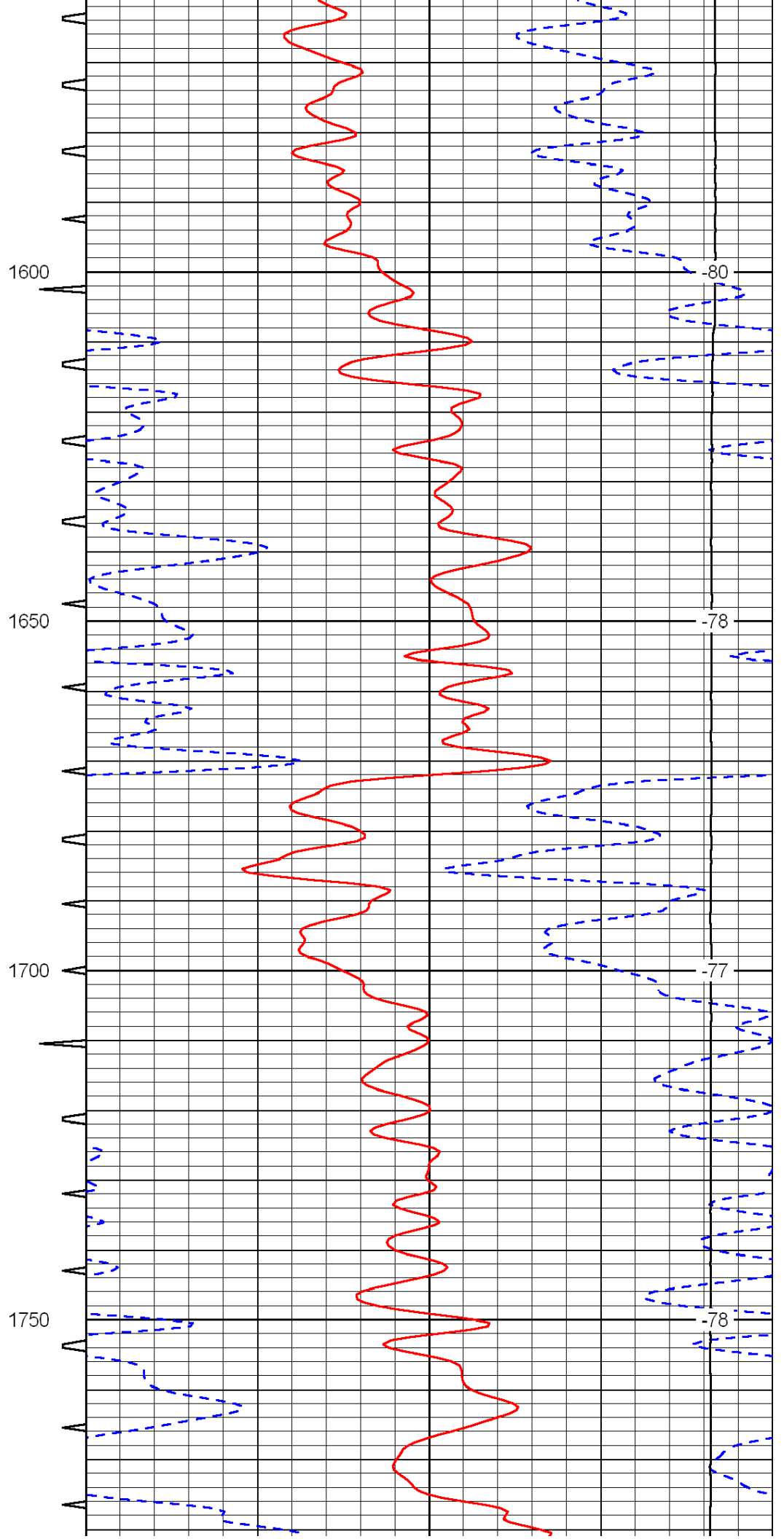
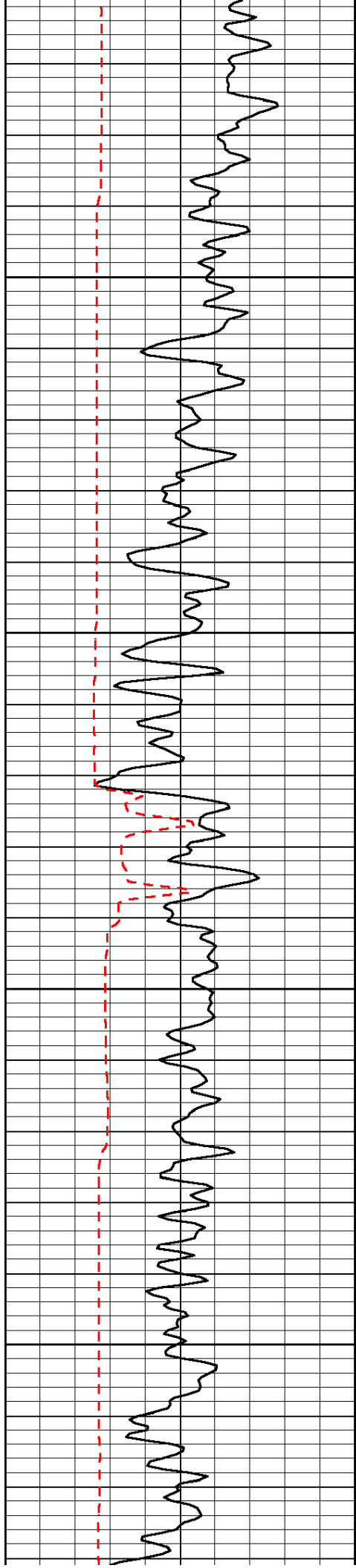
Thank you for using Log-Tech, Inc.  
(785) 625-3858  
  
Alexander, S 11 to W rd, 1 W, 1 S, 1/2 W into

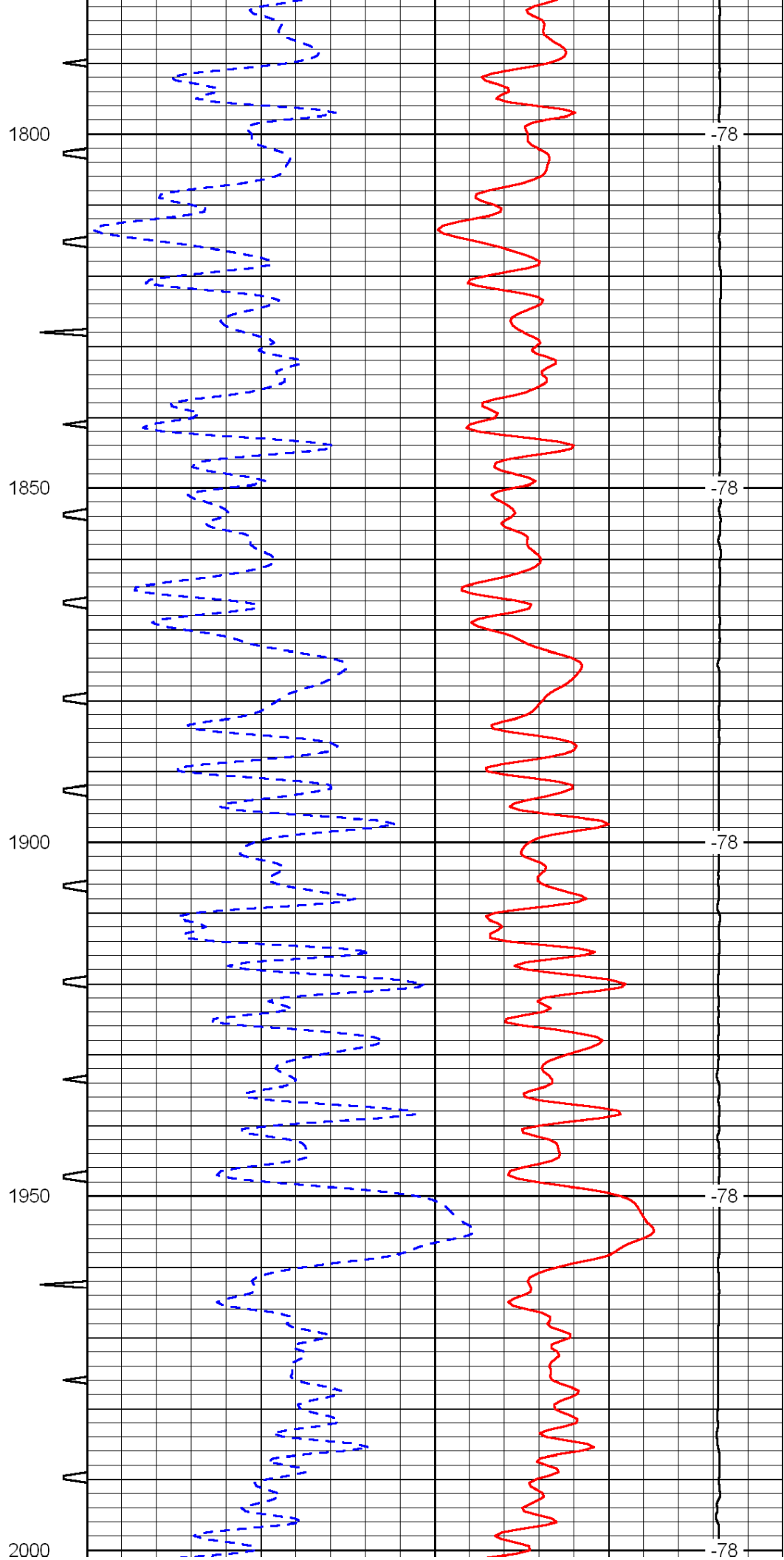
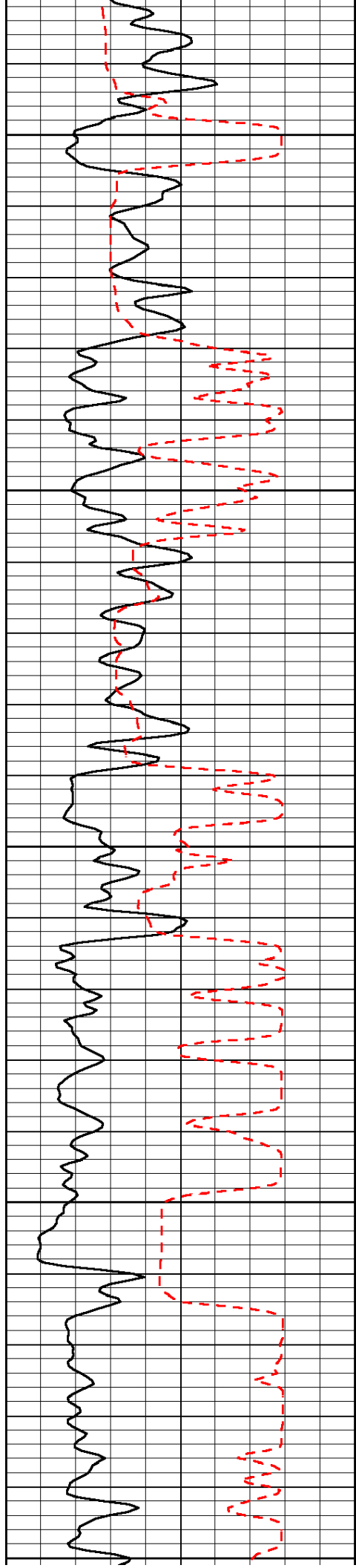
0	Gamma Ray	150	Sonic Int	140	Delta Time (usec/ft)	40
150	Gamma Ray	300	5	0	SPOR	-10
6	Caliper (GAPI)	16		15000	LTEN (lb)	0

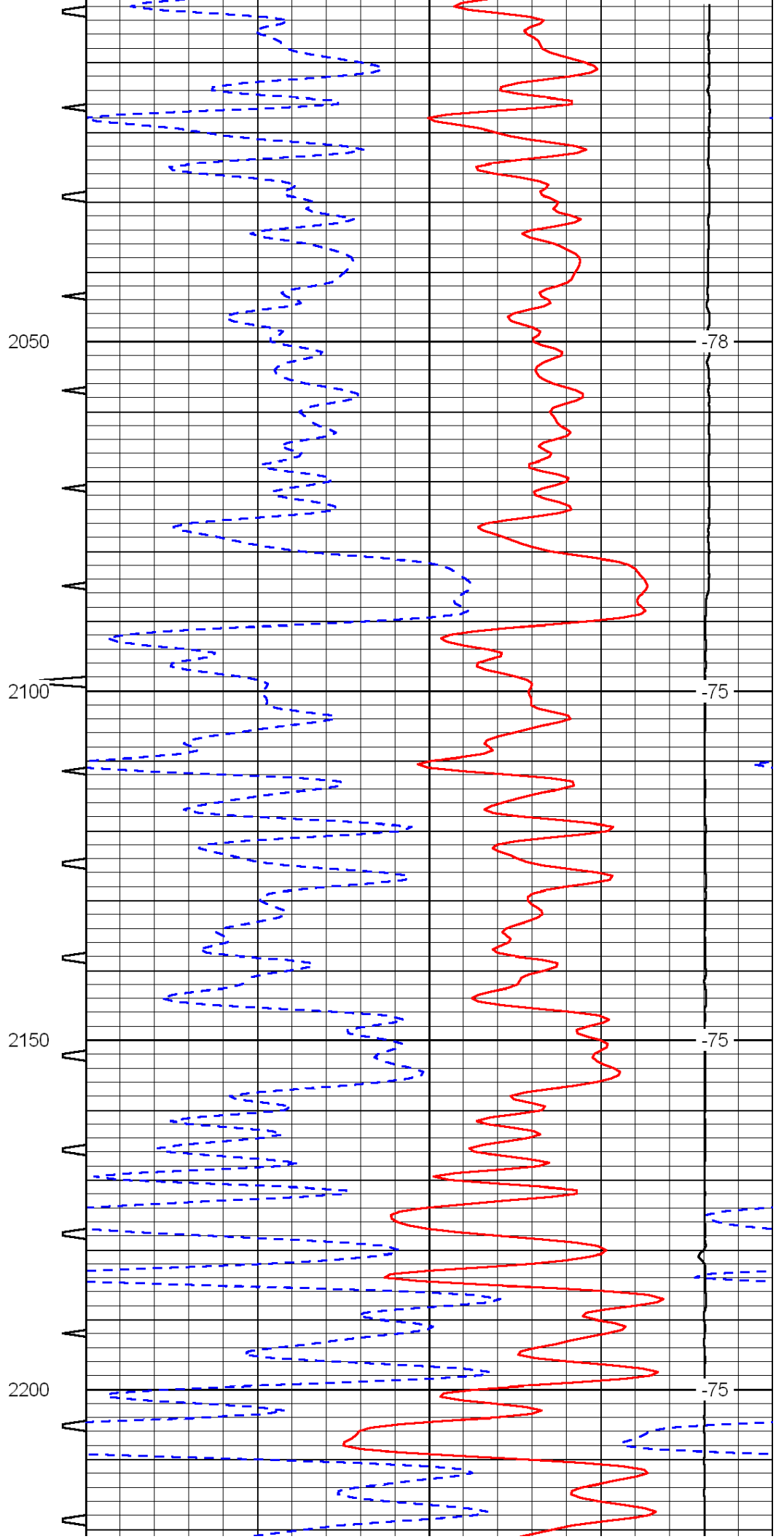
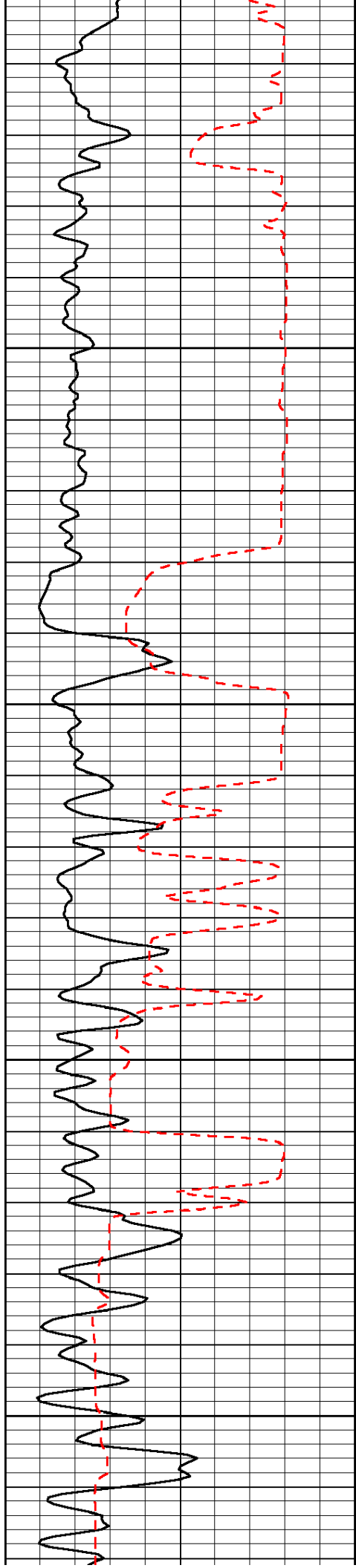
LSPD

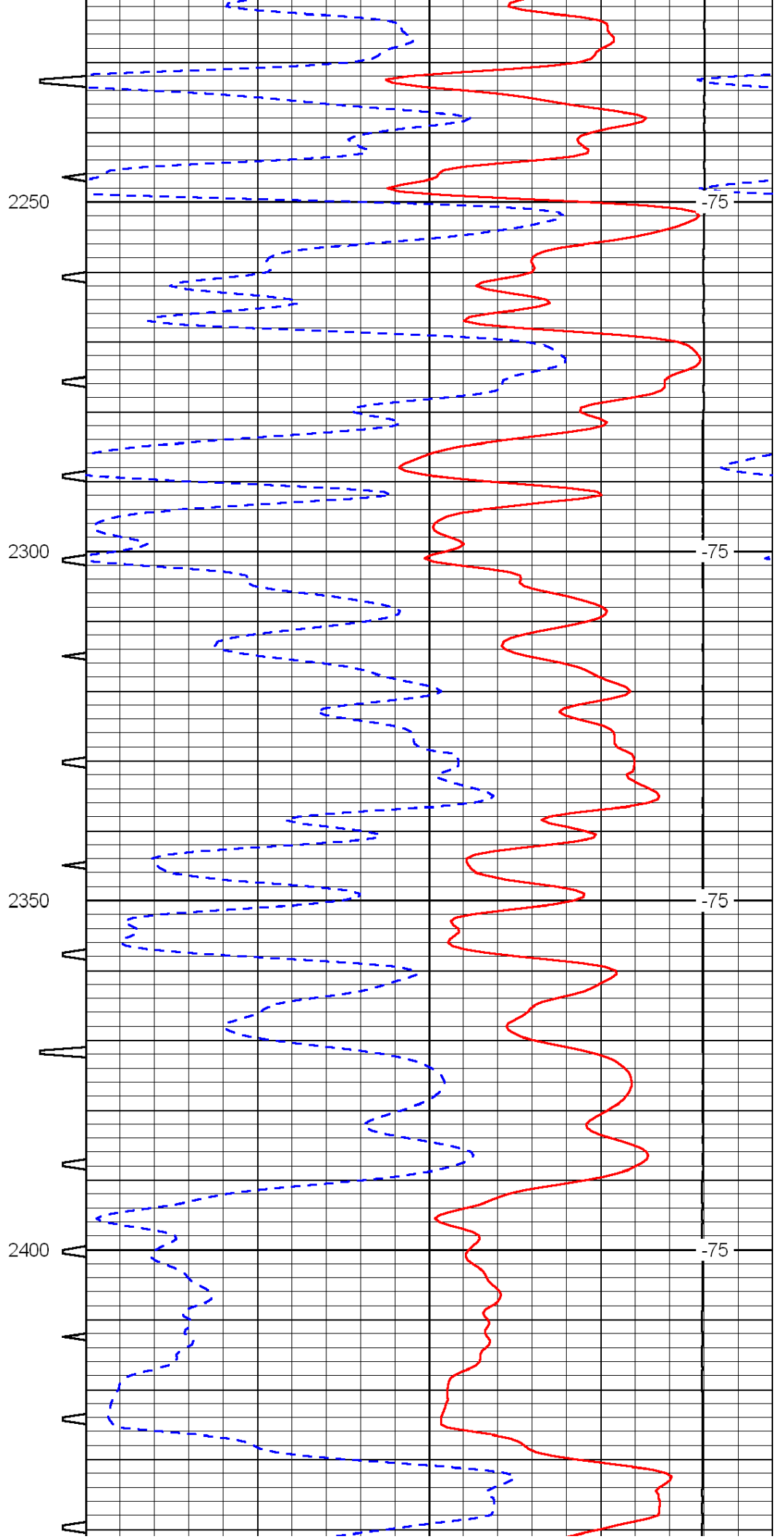
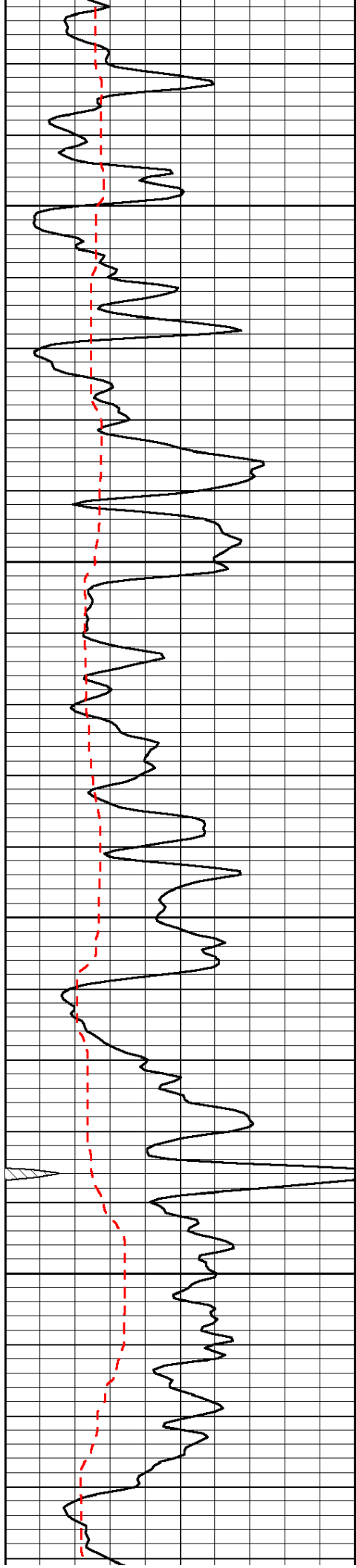


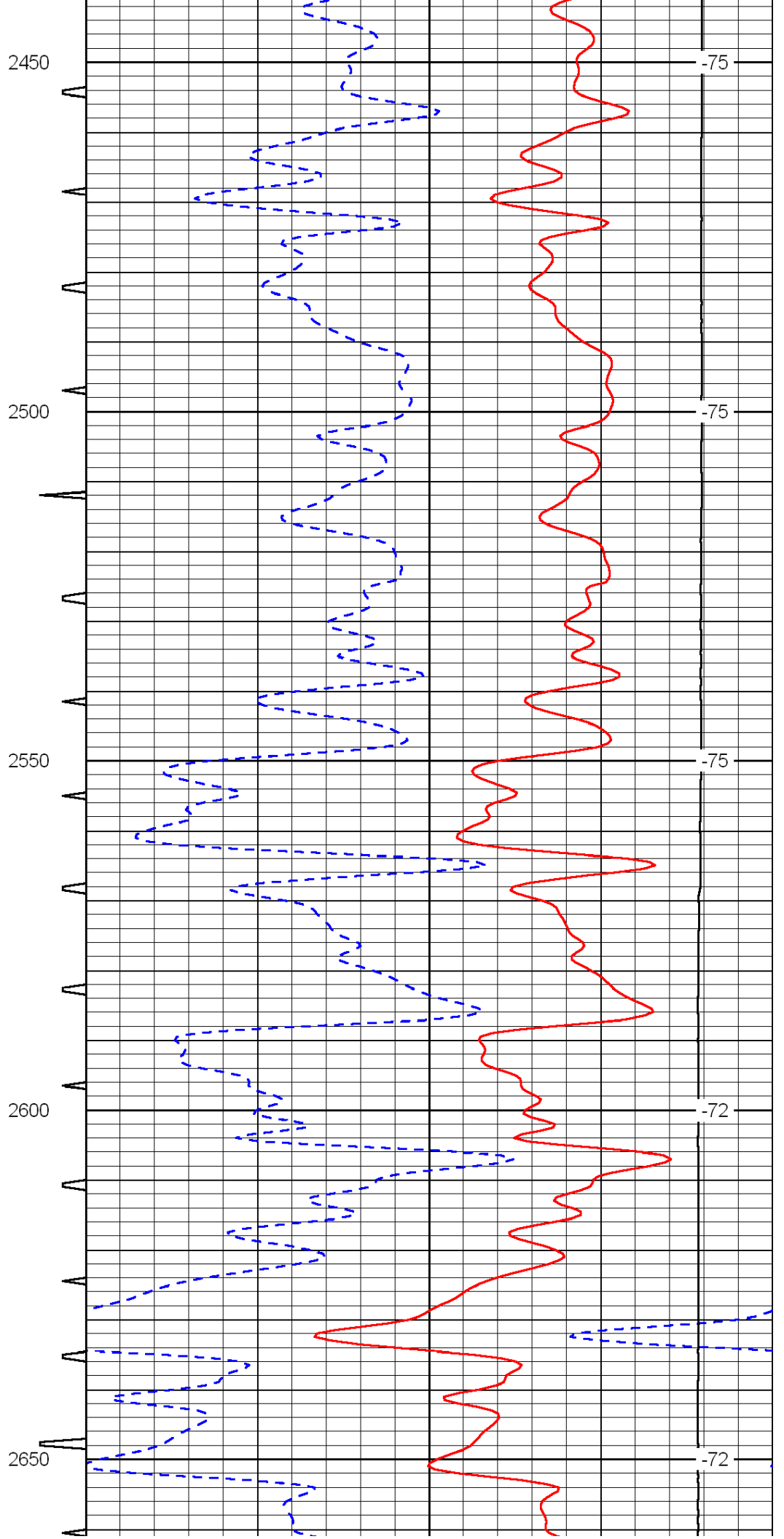
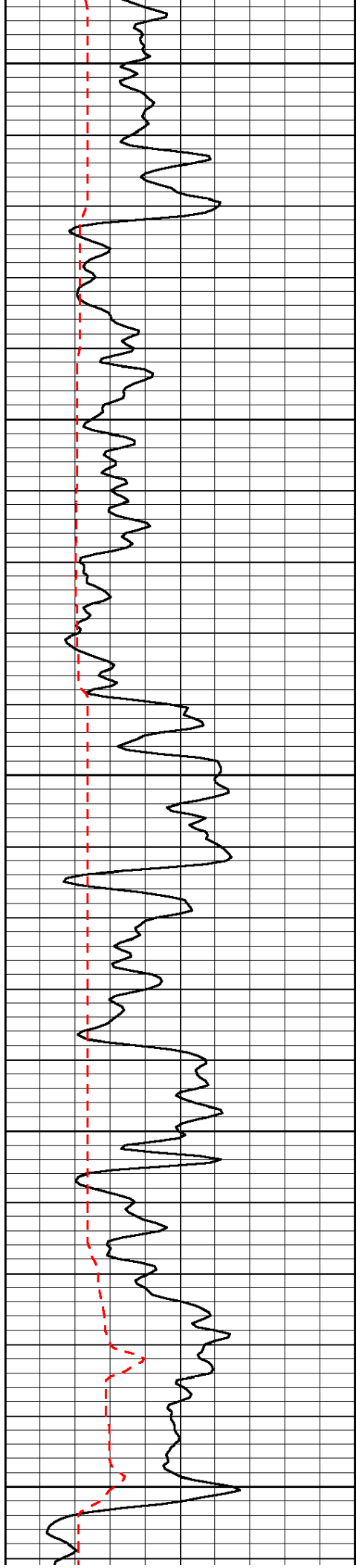


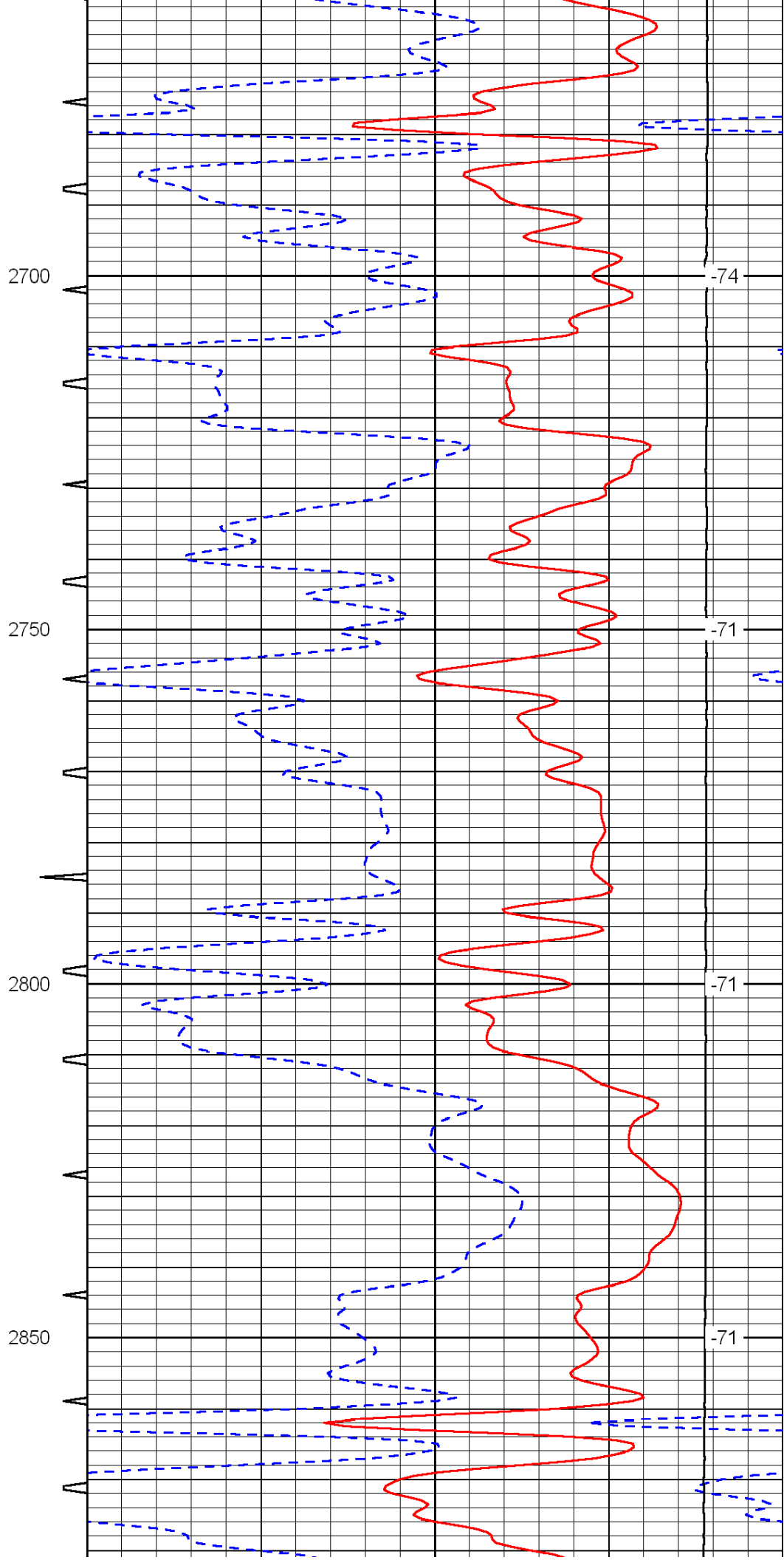
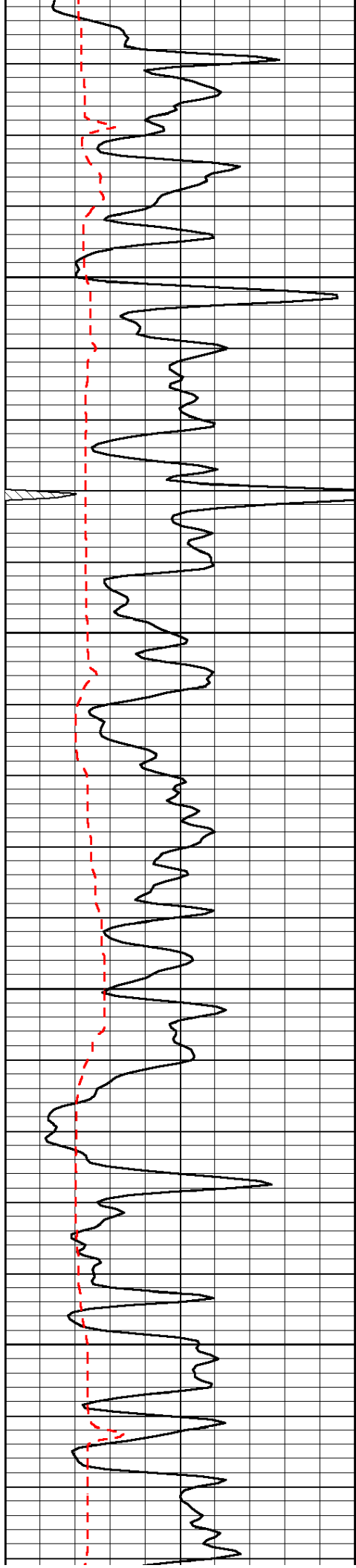


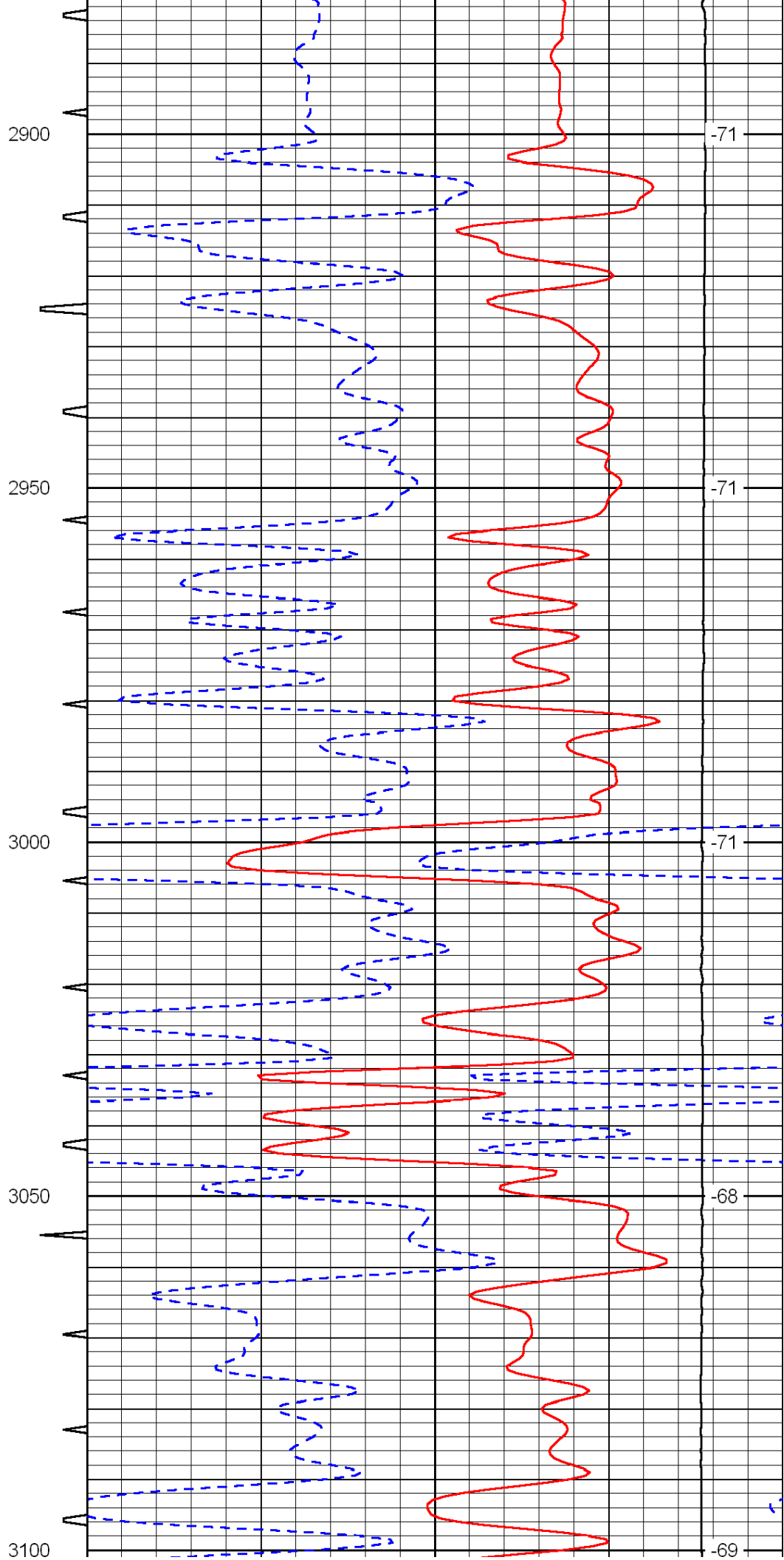
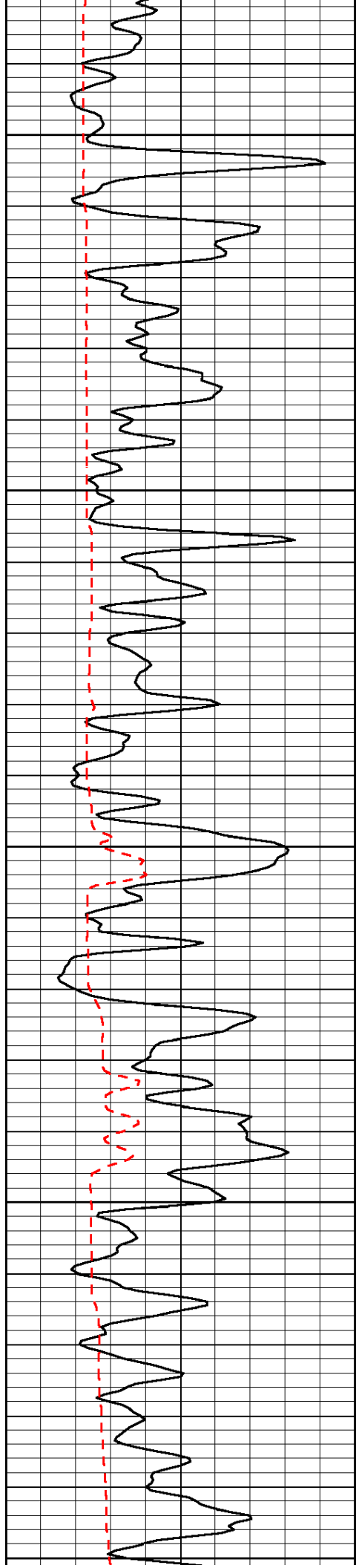


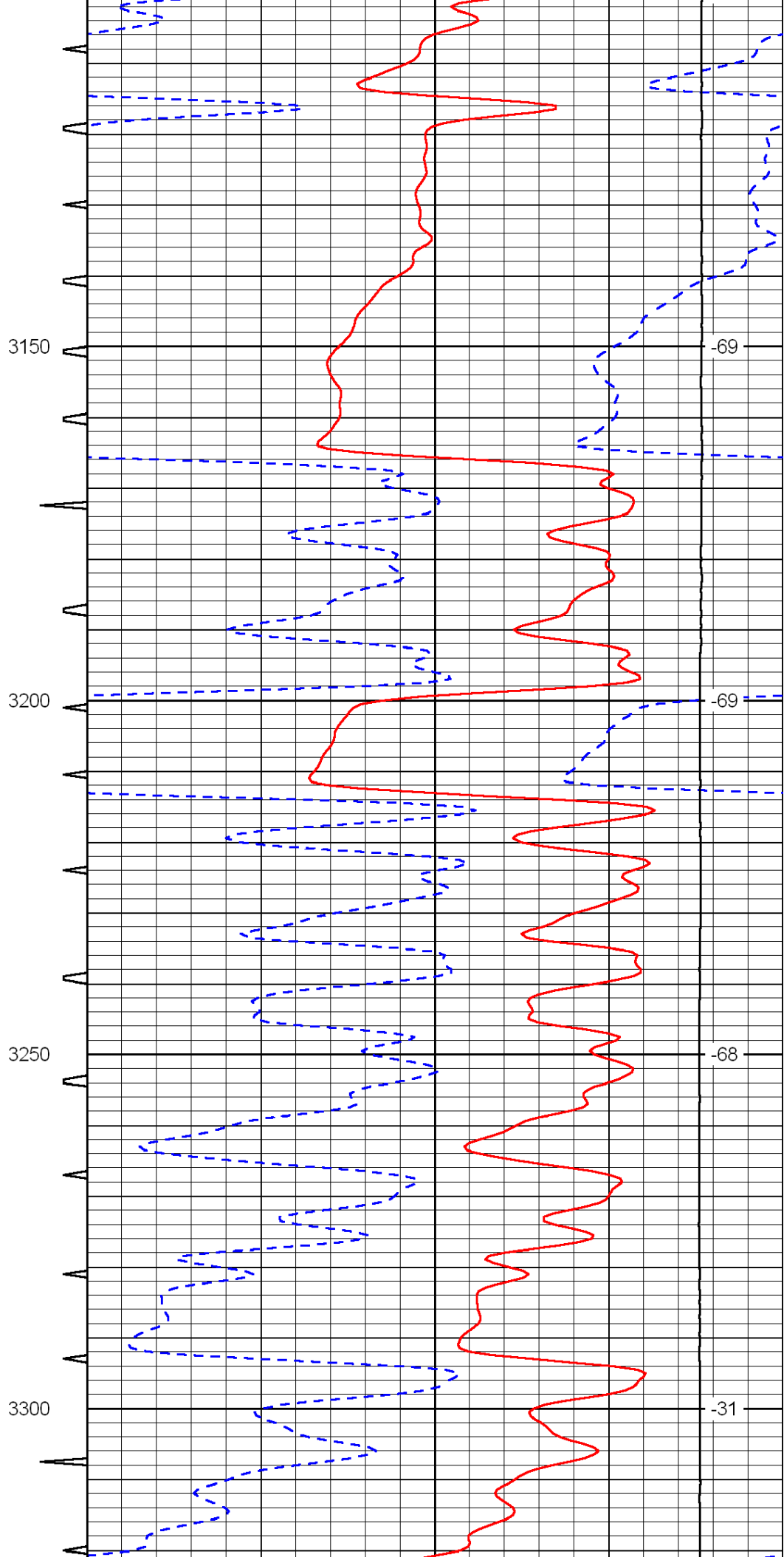
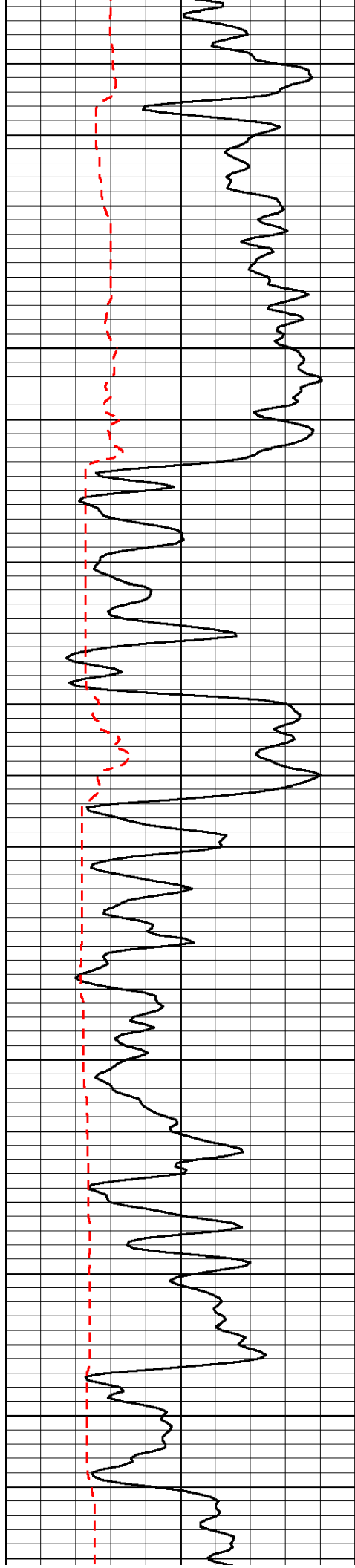


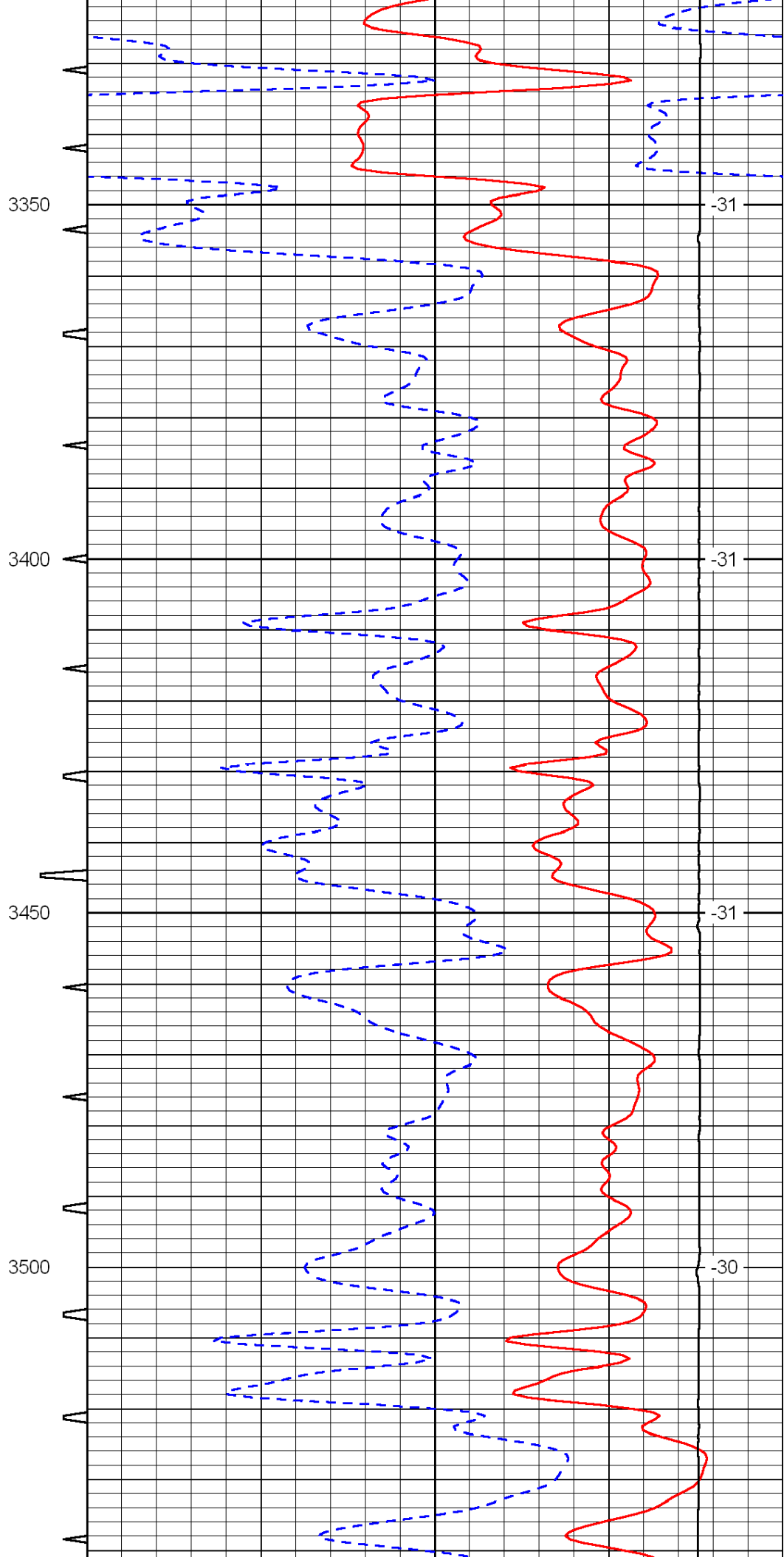
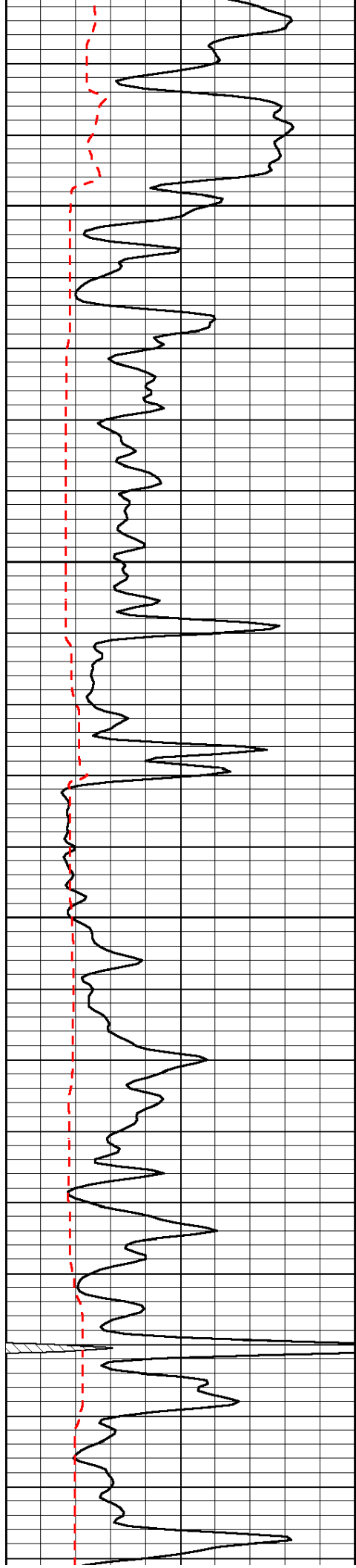


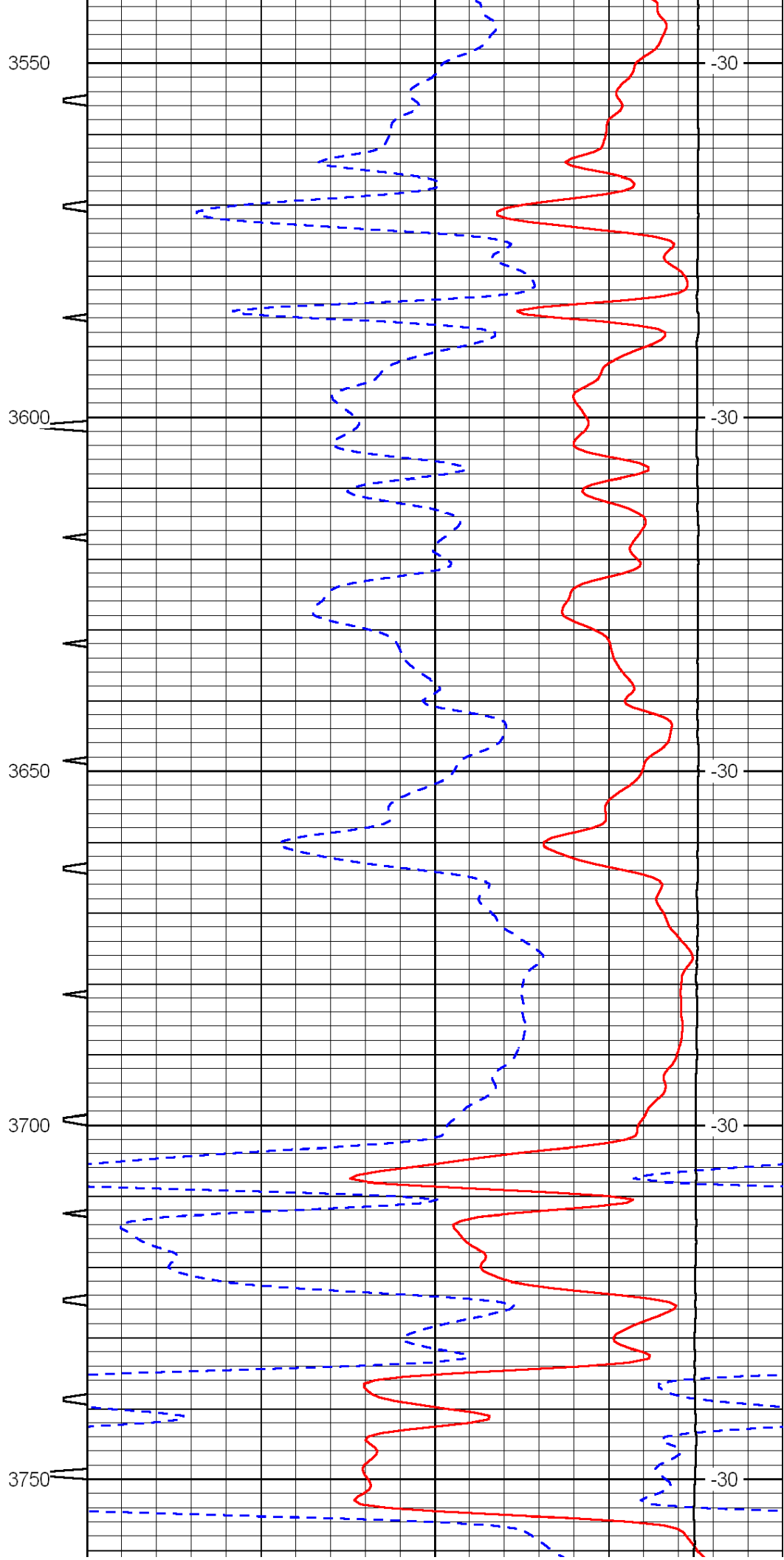
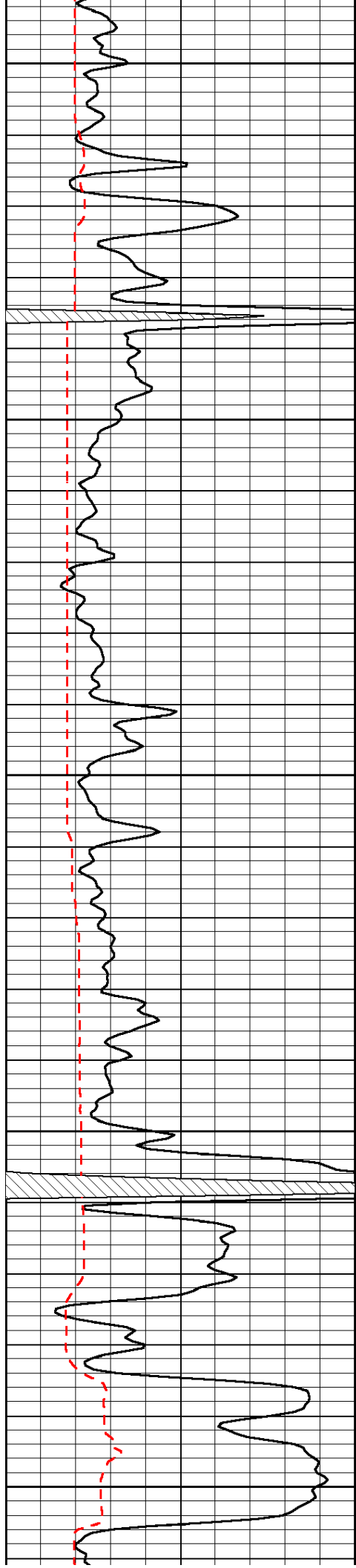


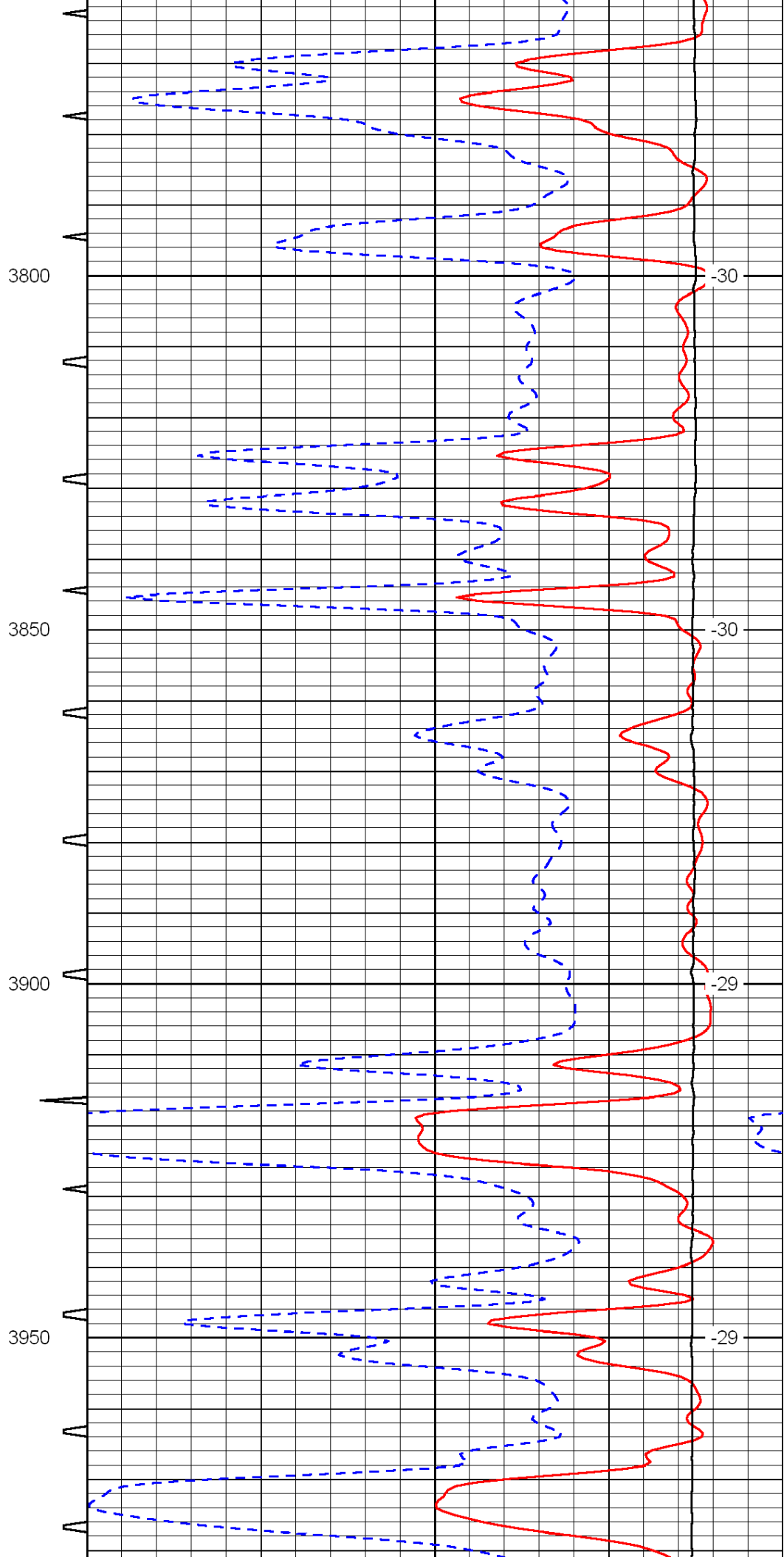
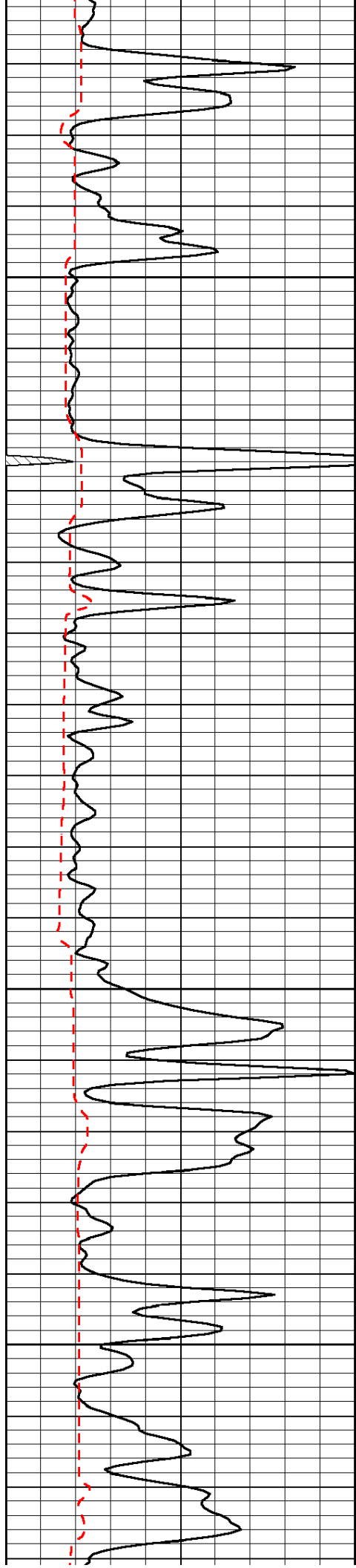


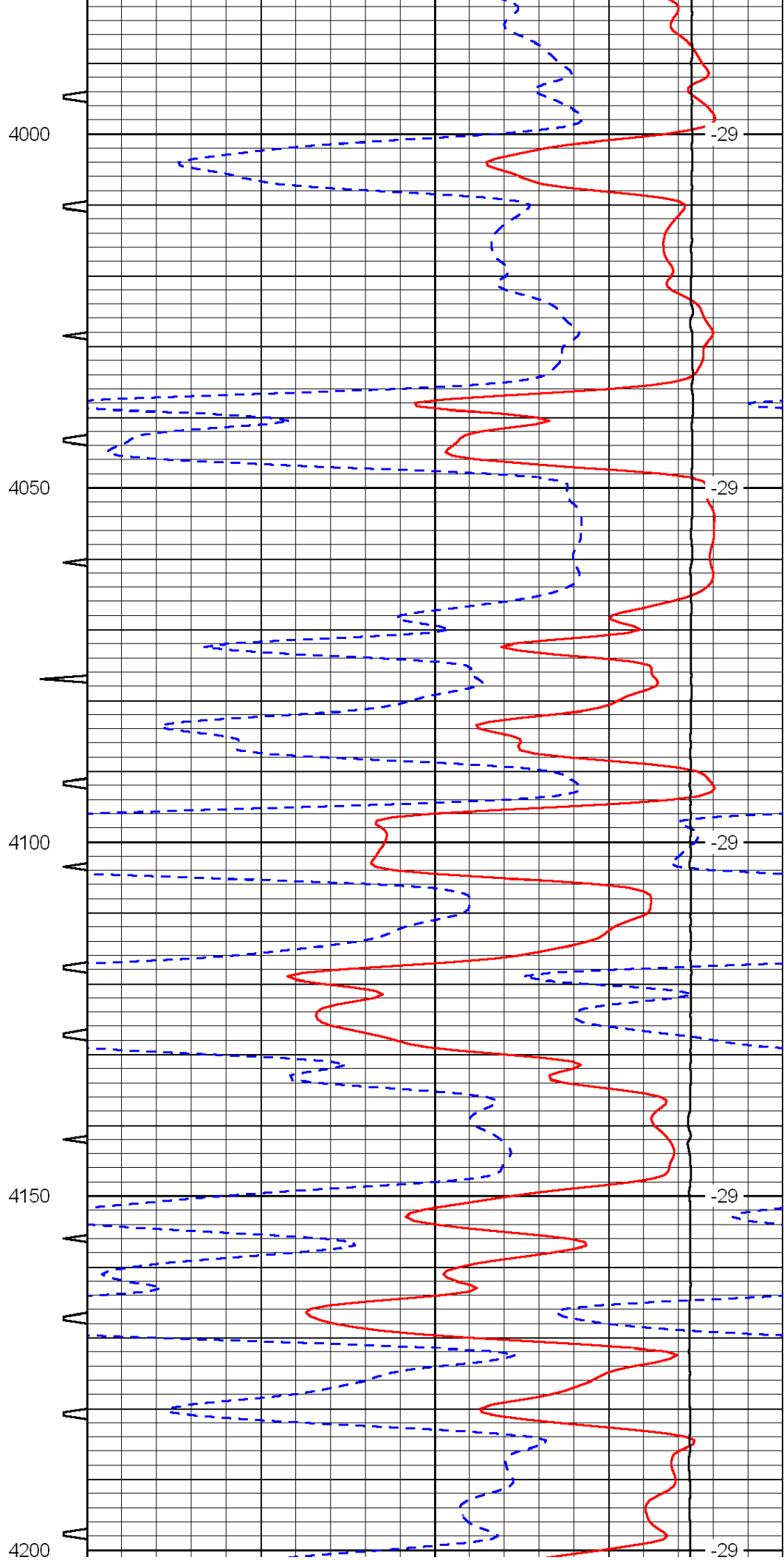
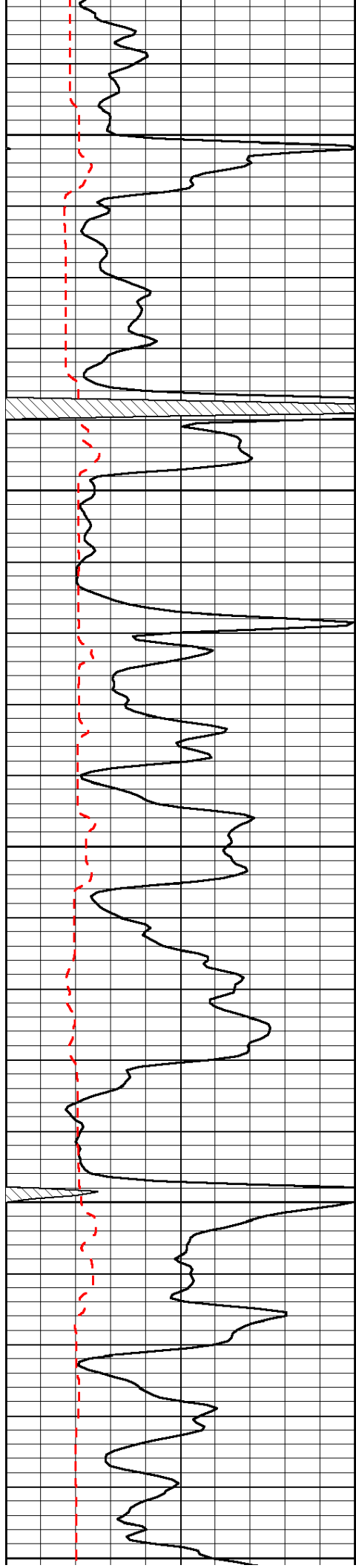


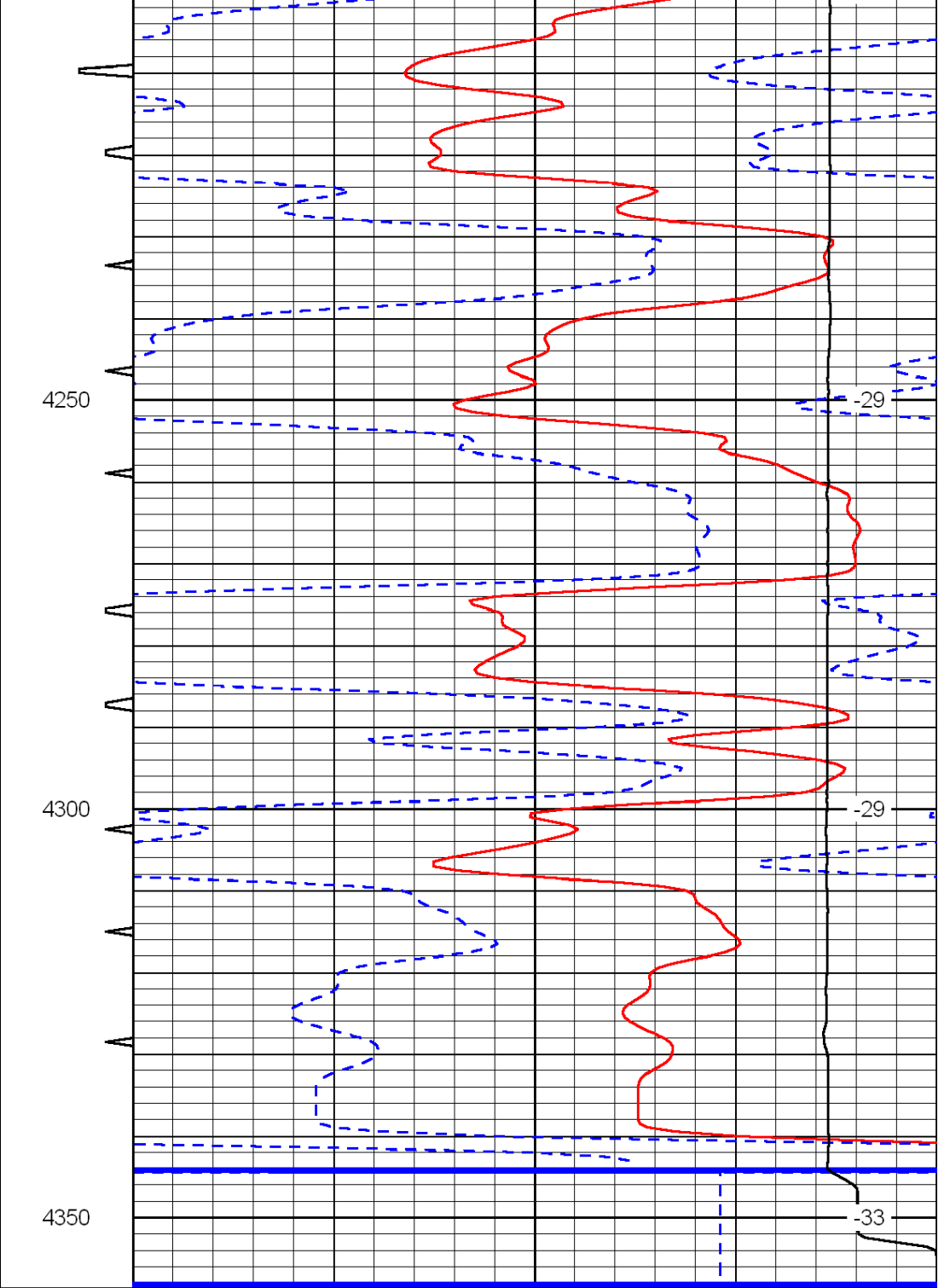
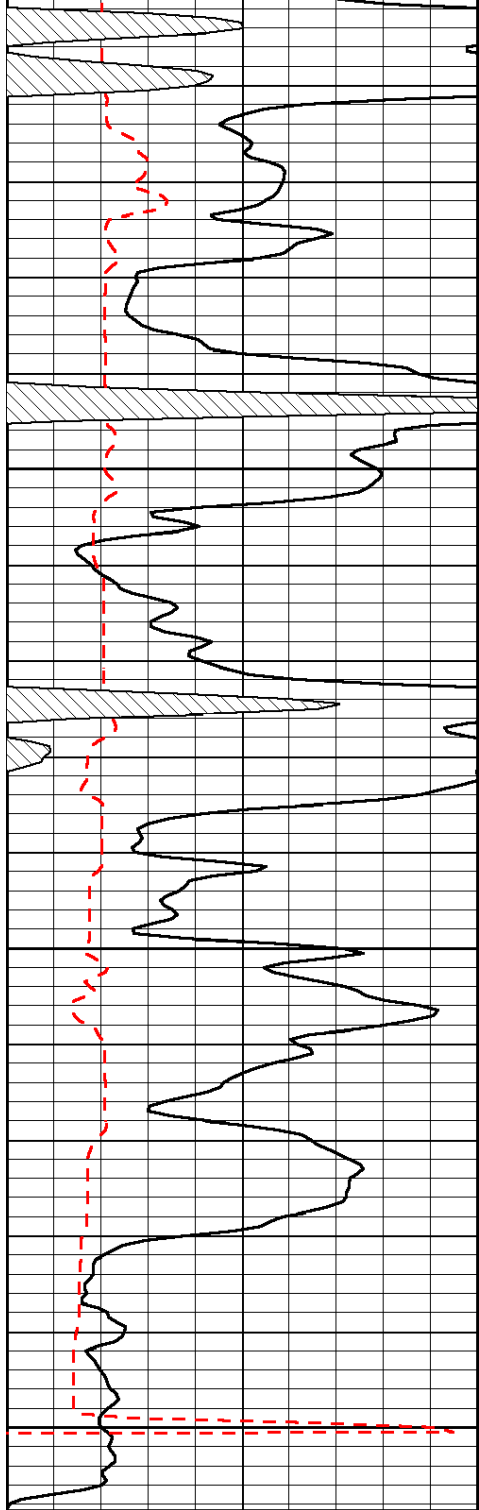












0	Gamma Ray	150	Sonic Int	140	Delta Time (usec/ft)	40
150	Gamma Ray	300	5	0	SPOR	-10
6	Caliper (GAPI)	16		15000	LTEN (lb)	0
LSPD						