



DIGITAL LOG (785) 625-3858

Microresistivity Log

API No.	15-145-21,614-00-00		
Company	Downing-Nelson Oil Co., Inc.		
Well	Marvin Saxton Unit No. 1-30		
Field	Steffen Field		
County	Pawnee	State	Kansas
Location	210' FNL & 1835' FWL		
Sec: 30	Twp: 20 S	Rge: 20 W	
Permanent Datum	Ground Level	Elevation 2180	Other Services CNL/CDL DIL/BHCS
Log Measured From	Kelly Bushing	8 Ft. Above Perm. Datum	
Drilling Measured From	Kelly Bushing		Elevation K.B. 2188 D.F. 2180 G.L. 2180

Date	11/15/2010
Run Number	Two
Depth Driller	4343
Depth Logger	4344
Bottom Logged Interval	4343
Top Log Interval	3300
Casing Driller	8.625 @ 1160
Casing Logger	1154
Bit Size	7.875
Type Fluid in Hole	Chemical
Salinity, ppm CL	5.000
Density / Viscosity	9.2   59
pH / Fluid Loss	10.0   11.2
Source of Sample	Flowline
Rm @ Meas. Temp	.85 @ 60
Rmf @ Meas. Temp	.64 @ 60
Rmc @ Meas. Temp	1.15 @ 60
Source of Rmf / Rmc	Charts
Rm @ BHT	.42 @ 121
Operating Rig Time	5 1/2 Hours
Max Rec. Temp. F	121
Equipment Number	4
Location	Hays
Recorded By	K. Bange
Witnessed By	Ron Nelson

<<< Fold Here >>>

All interpretations are opinions based on inferences from electrical or other measurements and we cannot and do not guarantee the accuracy or correctness of any interpretation, and we shall not, except in the case of gross or willful negligence on our part, be liable or responsible for any loss, costs, damages, or expenses incurred or sustained by anyone resulting from any interpretation made by any of our officers, agents or employees. These interpretations are also subject to our general terms and conditions set out in our current Price Schedule.

Comments

Thank you for using Log-Tech, Inc.  
(785) 625-3858

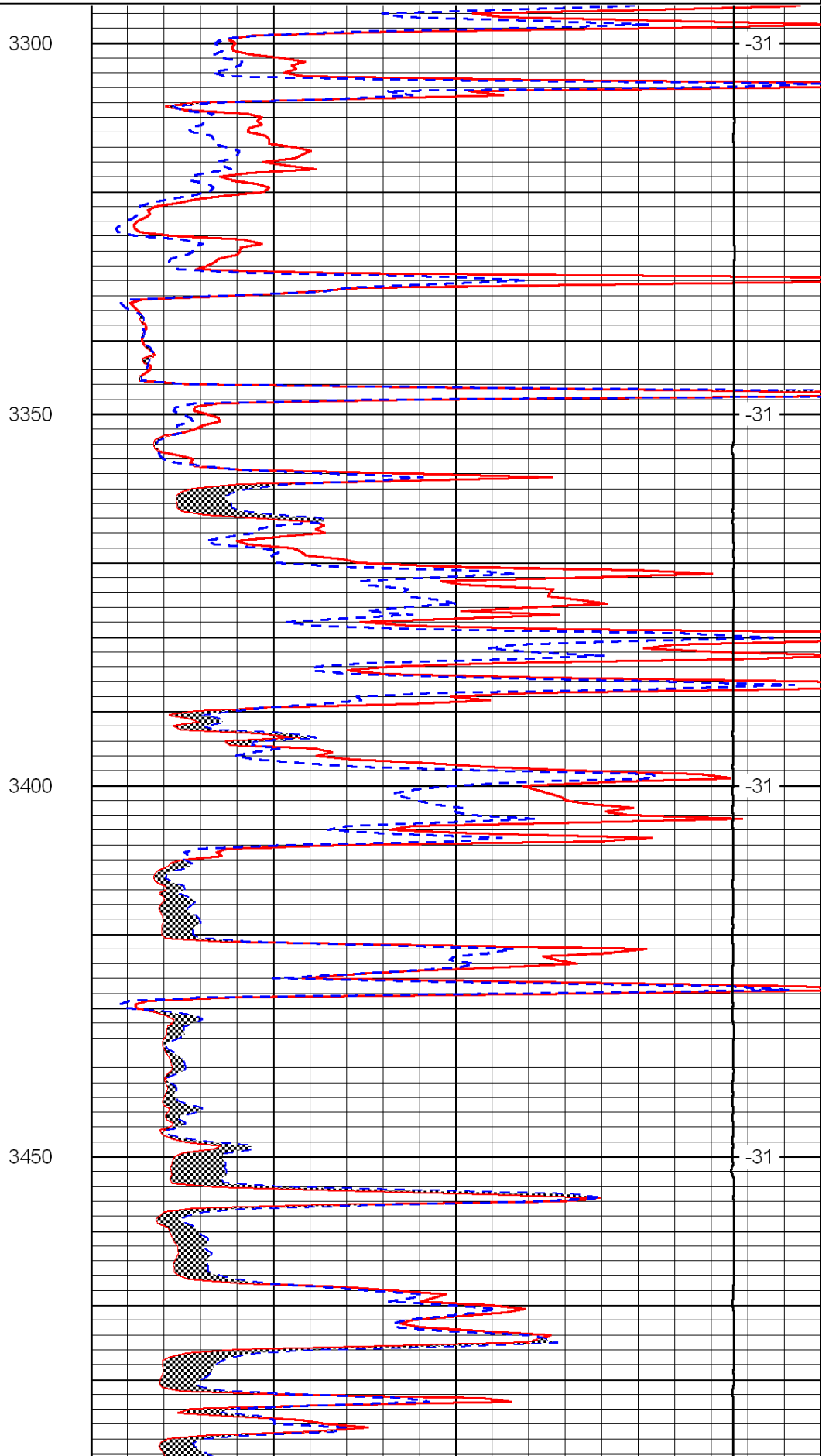
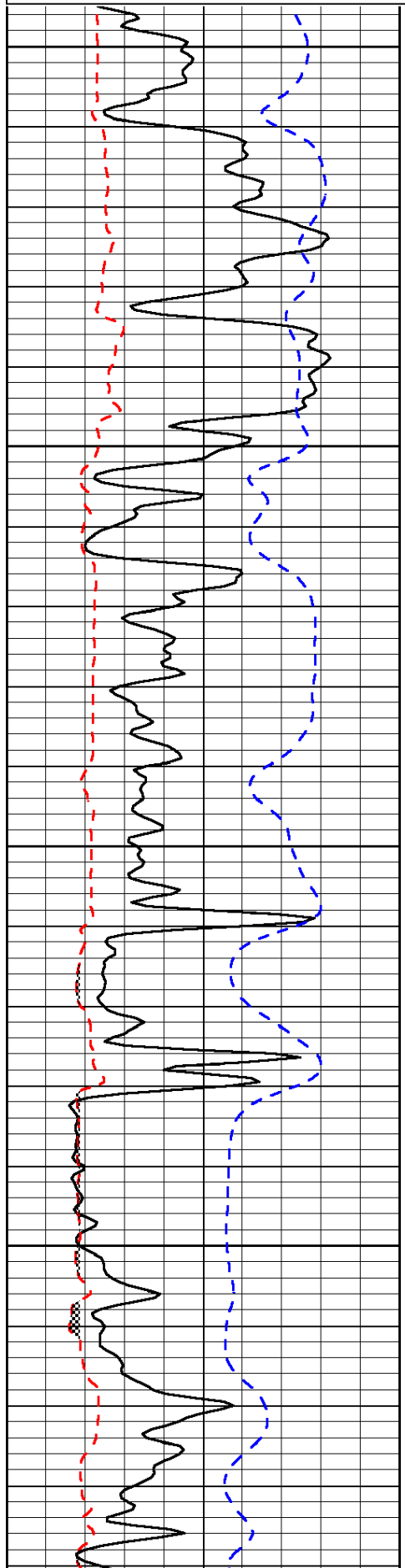
Alexander, S 11 to W rd, 1 W, 1 S, 1/2 W into

Database File: c:\warrior\data\downing-nelson\_marvin saxton unit #1-30\downel111510hd.db  
 Dataset Pathname: dil/dnelstack  
 Presentation Format: micro  
 Dataset Creation: Mon Nov 15 05:58:11 2010  
 Charted by: Depth in Feet scaled 1:240

0	Gamma Ray	150
6	Micro Log Caliper (GAPI)	16
-200	SP (mV)	0

0	Micro Inverse 1 X 1	40
0	Micro Normal 2"	40
15000	Line Weight	0

LSPD



3300

-31

3350

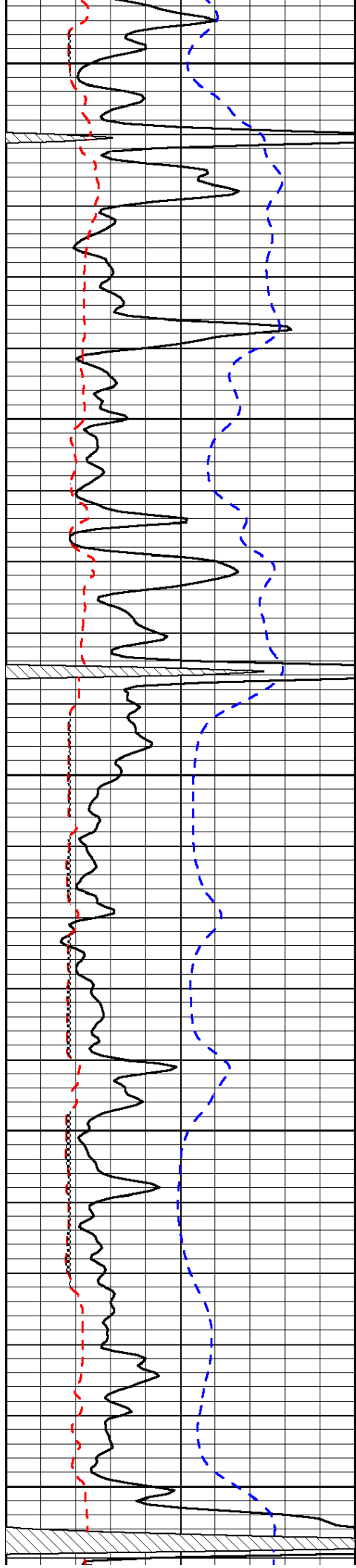
-31

3400

-31

3450

-31



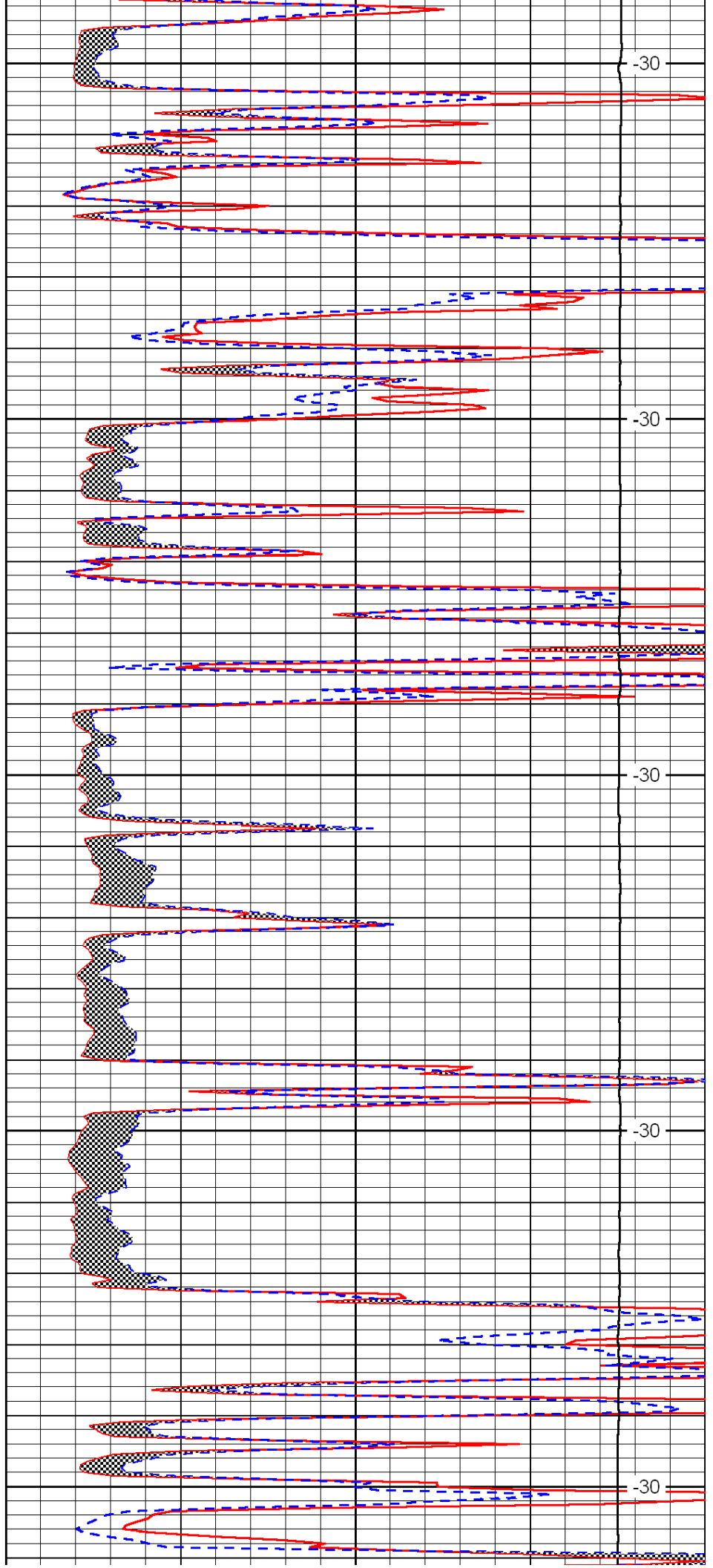
3500

3550

3600

3650

3700



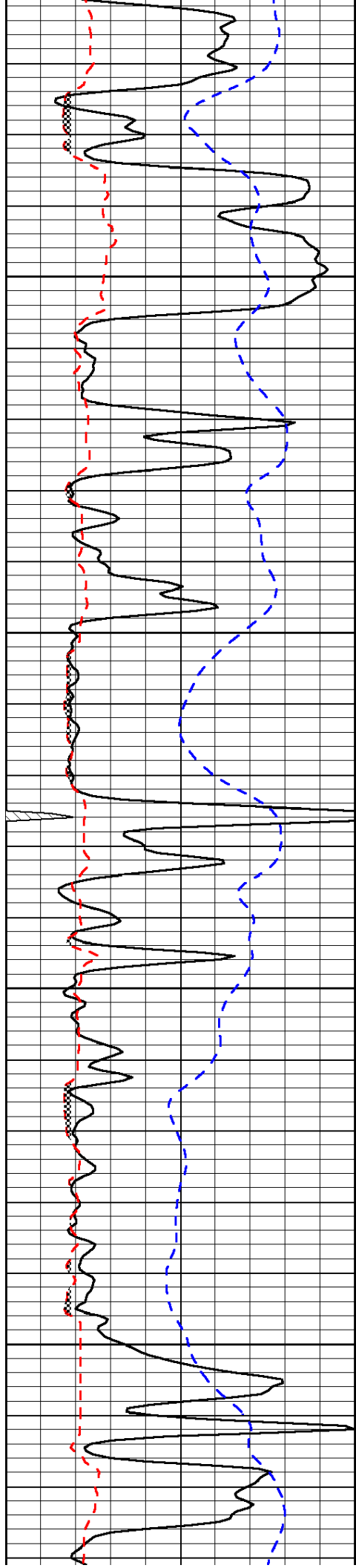
-30

-30

-30

-30

-30

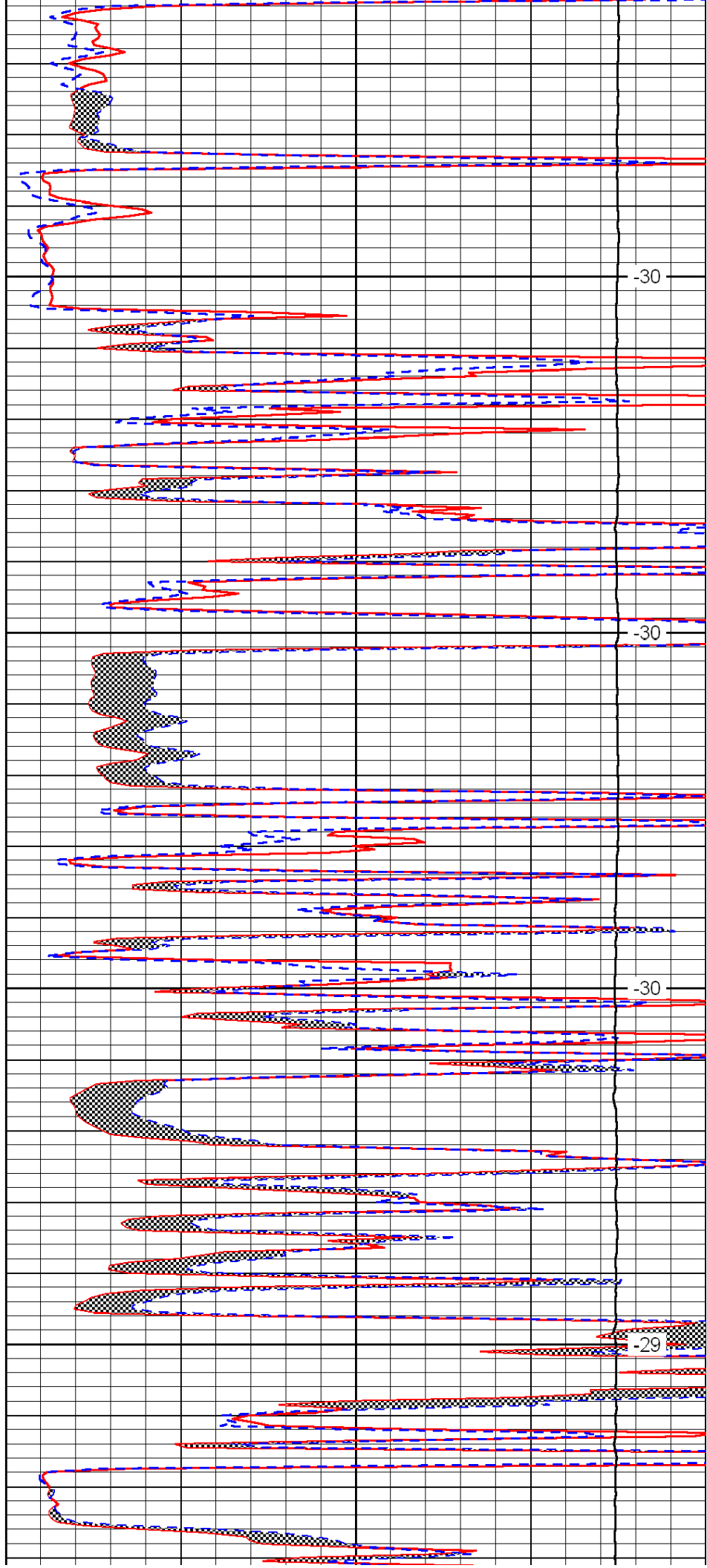


3750

3800

3850

3900

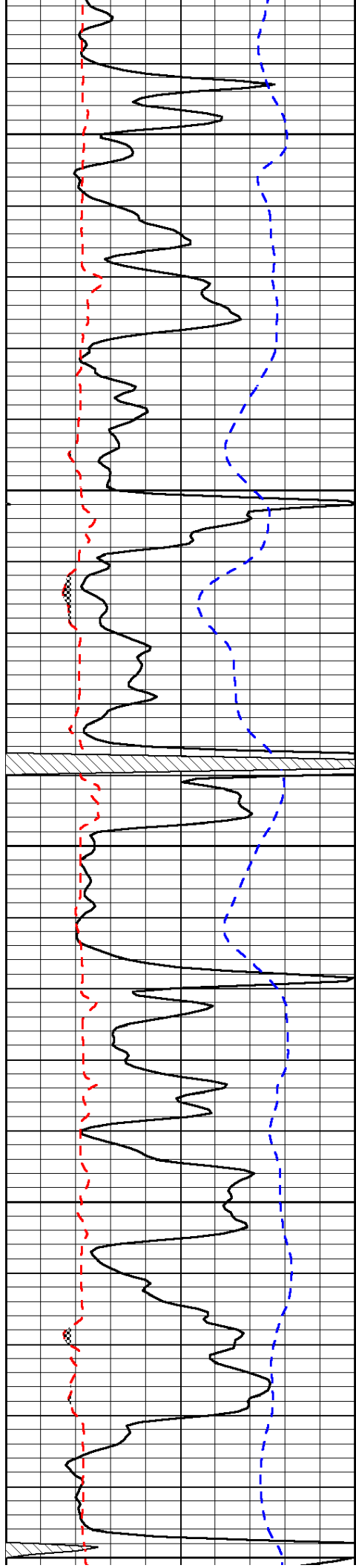


-30

-30

-30

-29



3950

4000

4050

4100

4150

