



Microresistivity Log

DIGITAL LOG (785) 625-3858

API No. 15-083-21682-00-00	Company American Warrior, Inc.	Other Services CNL/CDL DIL
	Well Borger No. 2-3	
	Field Wildcat	
	County Hodgeman State	
		Kansas
	Location SE - NE - SE - SW 719' FSL & 2501' FWL	
	Sec: 3 Twp: 21 S Rge: 25 W	
Permanent Datum Log Measured From Drilling Measured From	Ground Level Kelly Bushing Kelly Bushing	Elevation 2332 11 Ft. Above Perm. Datum K.B. 2343 D.F. G.L. 2332

Date	11/16/2010
Run Number	Two
Depth Driller	4520
Depth Logger	4520
Bottom Logged Interval	4519
Top Log Interval	3600
Casing Driller	8.625 @ 234
Casing Logger	234
Bit Size	7.875
Type Fluid in Hole	Chemical
Salinity, ppm CL	4100
Density / Viscosity	9.2 60
pH / Fluid Loss	8.5 9.6
Source of Sample	Flowline
Rm @ Meas. Temp	1.80 @ 60
Rmf @ Meas. Temp	1.35 @ 60
Rmc @ Meas. Temp	2.43 @ 60
Source of Rmf / Rmc	Charts
Rm @ BHT	0.89 @ 121
Operating Rig Time	3 1/2 Hours
Max Rec. Temp. F	121
Equipment Number	15
Location	Hays
Recorded By	B. Becker
Witnessed By	Harley Sayles

<<< Fold Here >>>

All interpretations are opinions based on inferences from electrical or other measurements and we cannot and do not guarantee the accuracy or correctness of any interpretation, and we shall not, except in the case of gross or willful negligence on our part, be liable or responsible for any loss, costs, damages, or expenses incurred or sustained by anyone resulting from any interpretation made by any of our officers, agents or employees. These interpretations are also subject to our general terms and conditions set out in our current Price Schedule.

Comments

Thank you for using Log-Tech, Inc.
 (785) 625-3858

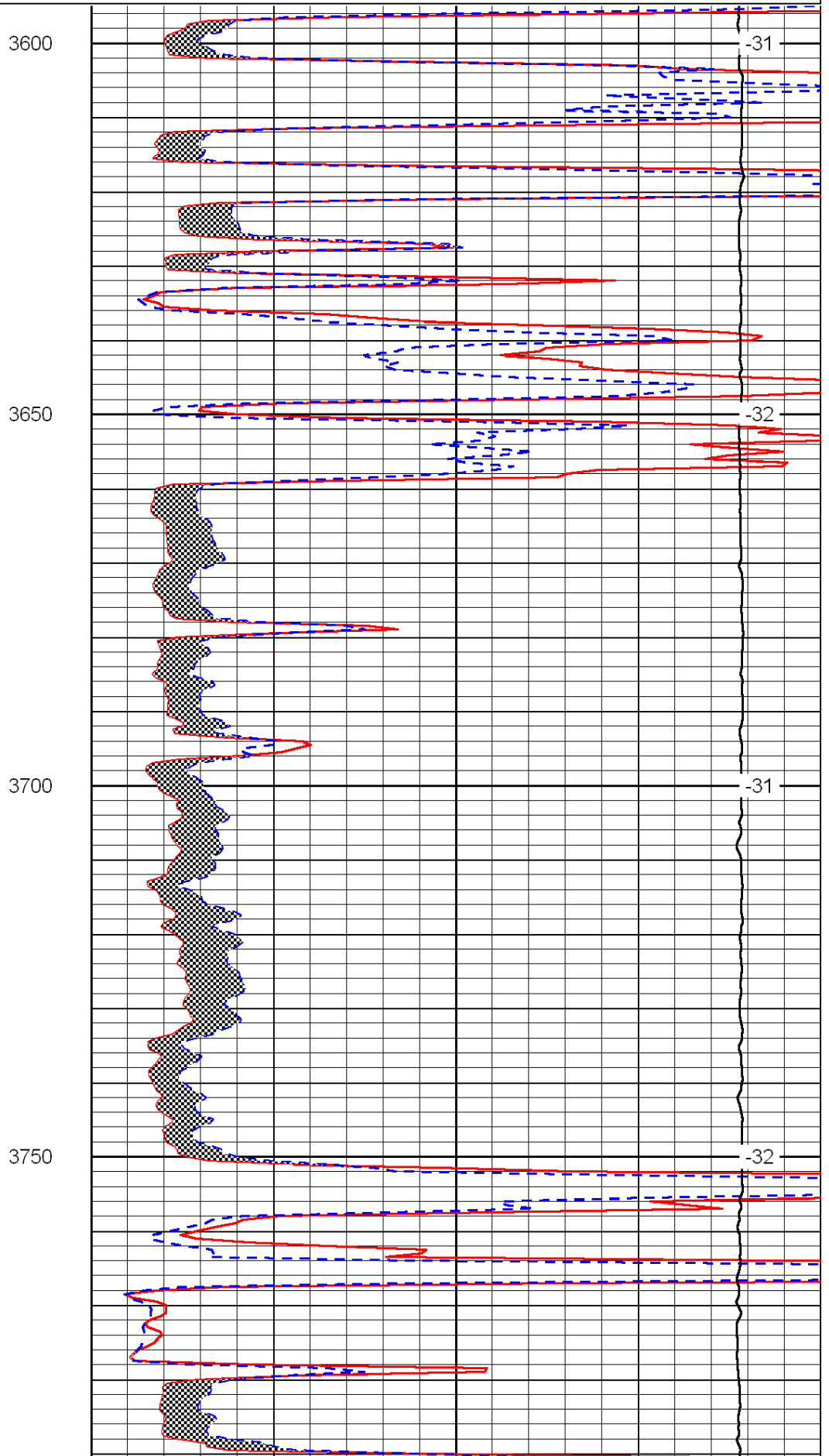
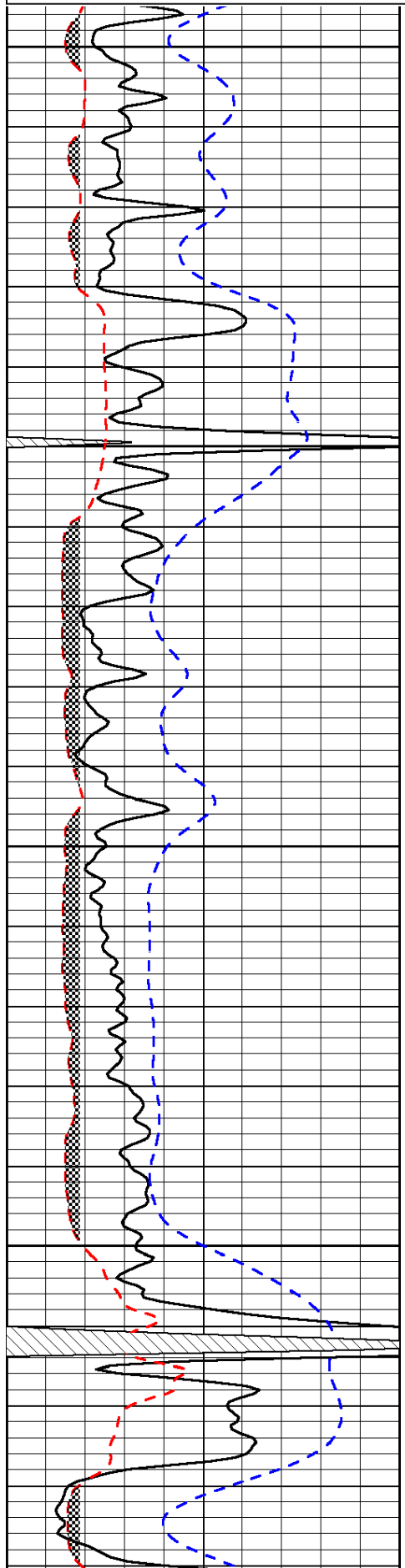
 Ness City, Ks;
 13 South to X Rd;
 8.6 West; North Into

Database File: c:\warrior\data\amwar_borger no. 2-3\amwarhd.db
 Dataset Pathname: DIL\awstk
 Presentation Format: micro
 Dataset Creation: Tue Nov 16 08:35:50 2010
 Charted by: Depth in Feet scaled 1:240

0	Gamma Ray	150
6	Micro Log Caliper (GAPI)	16
-200	SP (mV)	0

0	Micro Inverse 1 X 1	40
0	Micro Normal 2"	40
15000	Line Weight	0

LSPD



3600

3650

3700

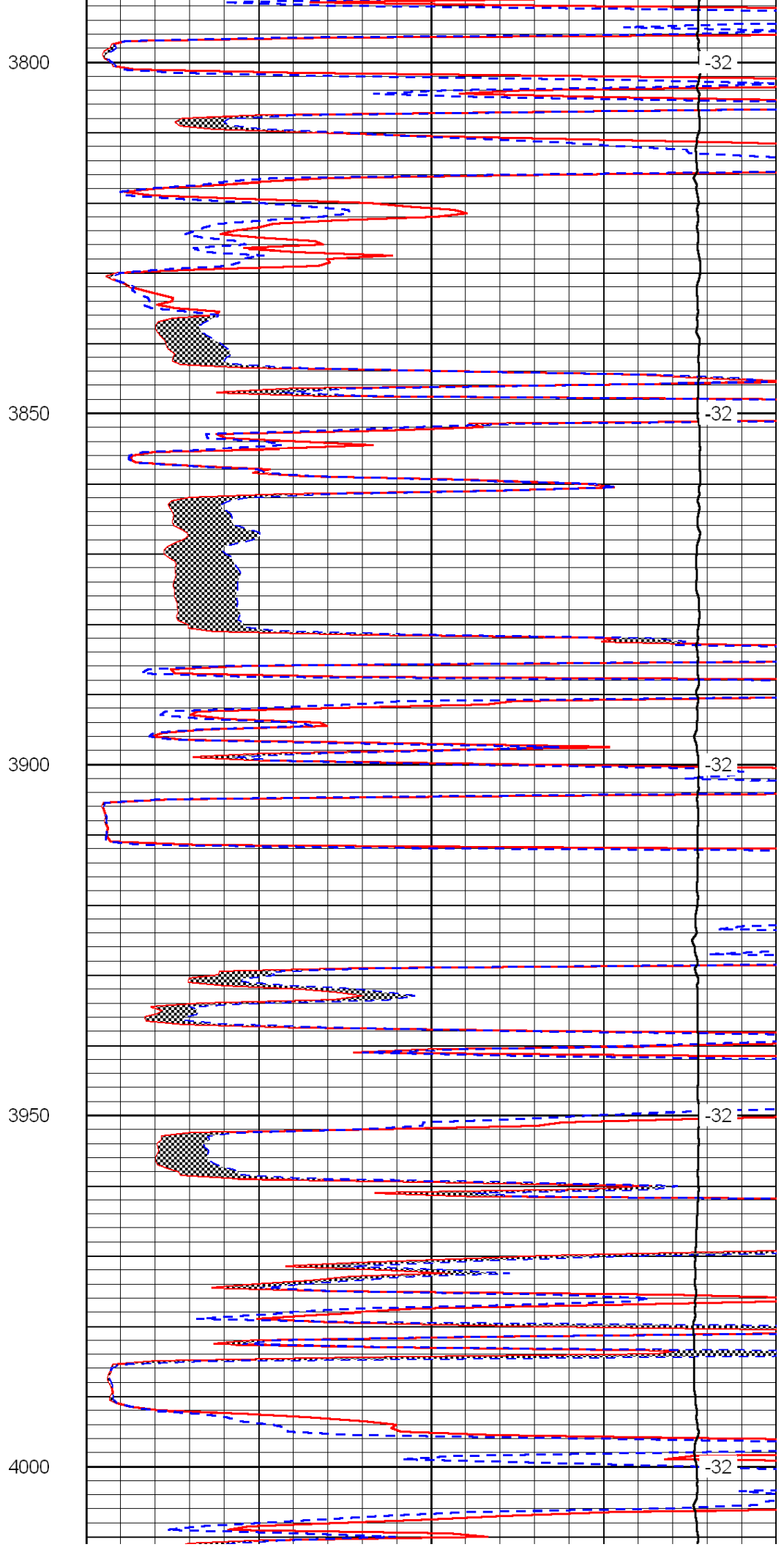
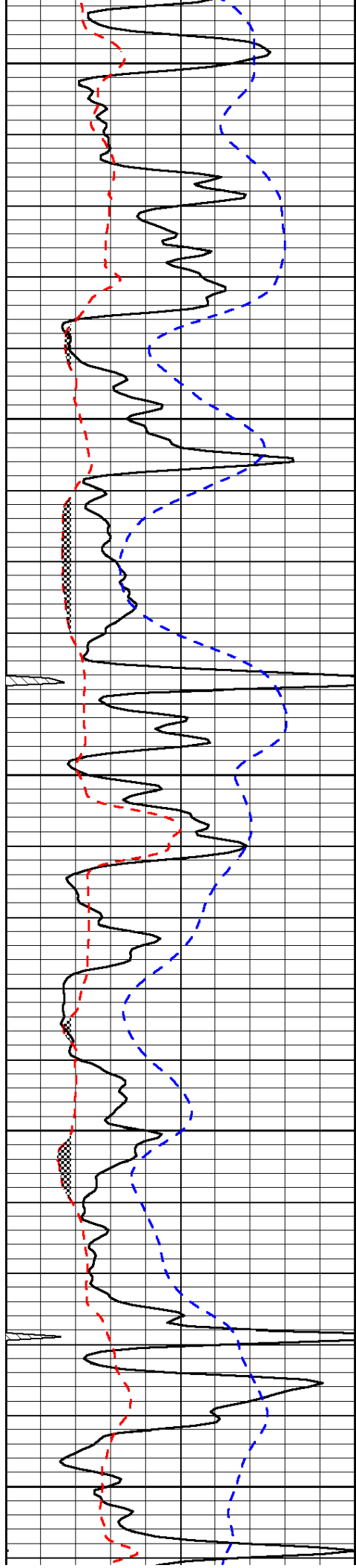
3750

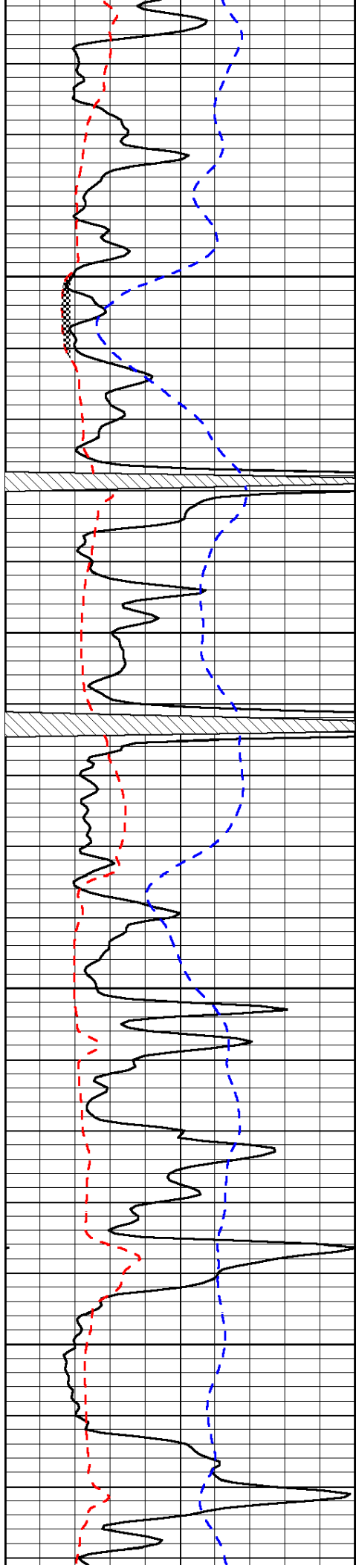
-31

-32

-31

-32



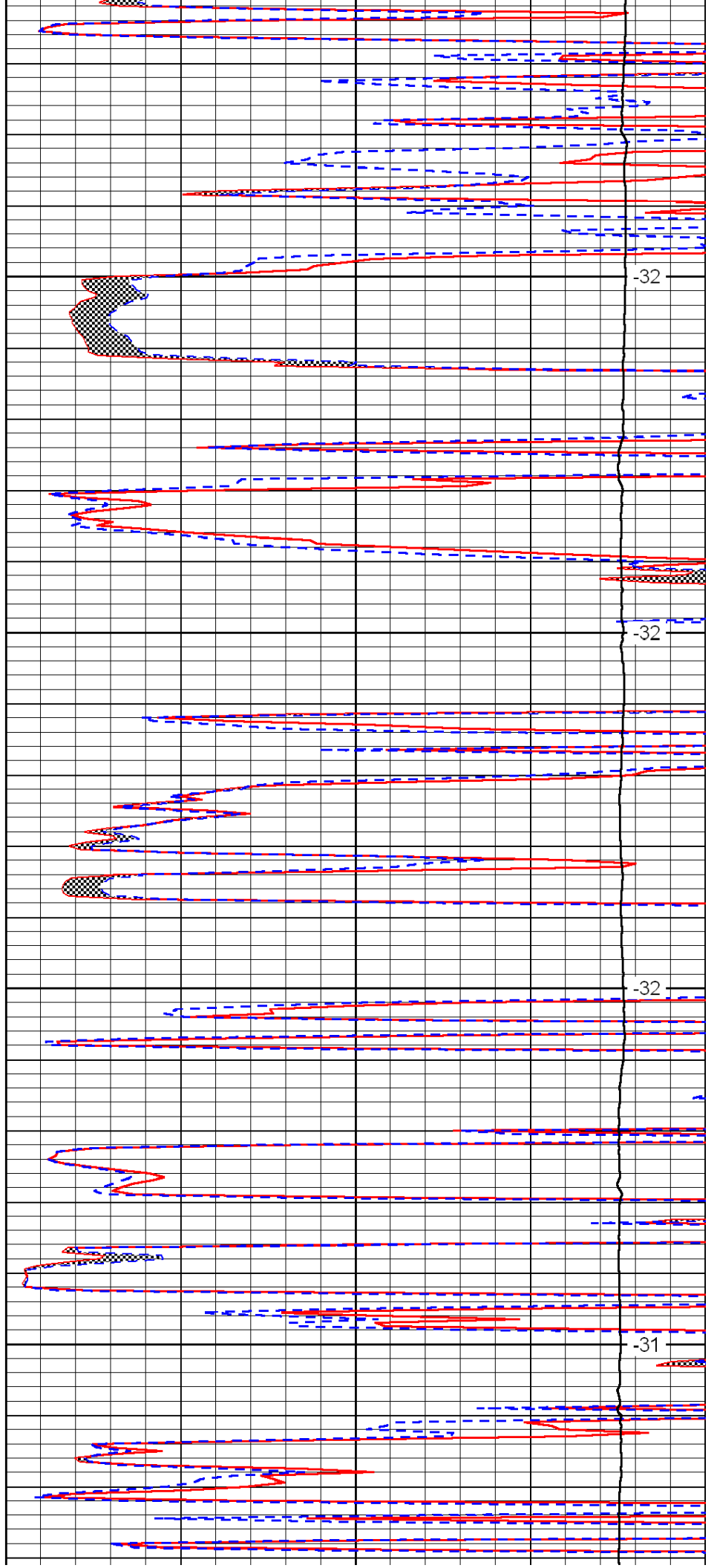


4050

4100

4150

4200

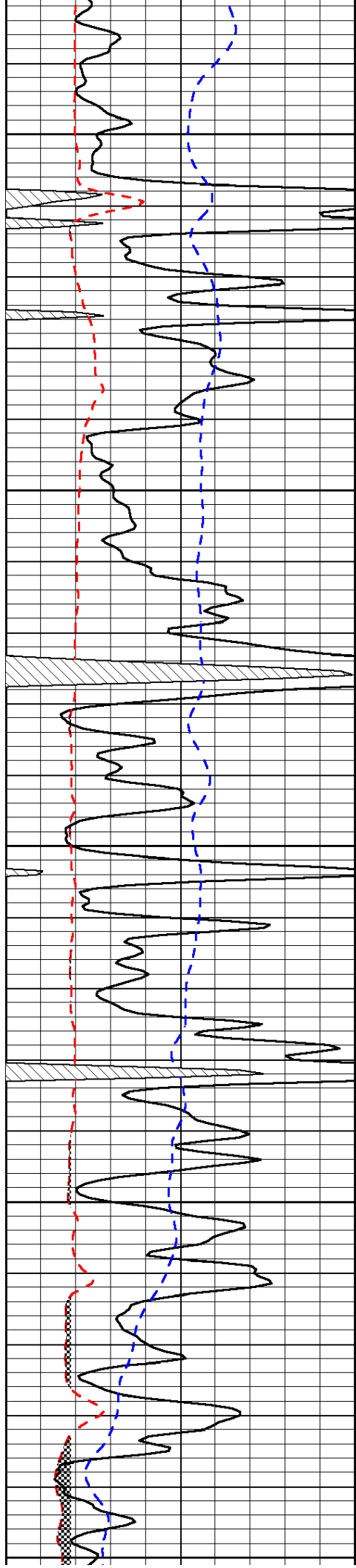


-32

-32

-32

-31



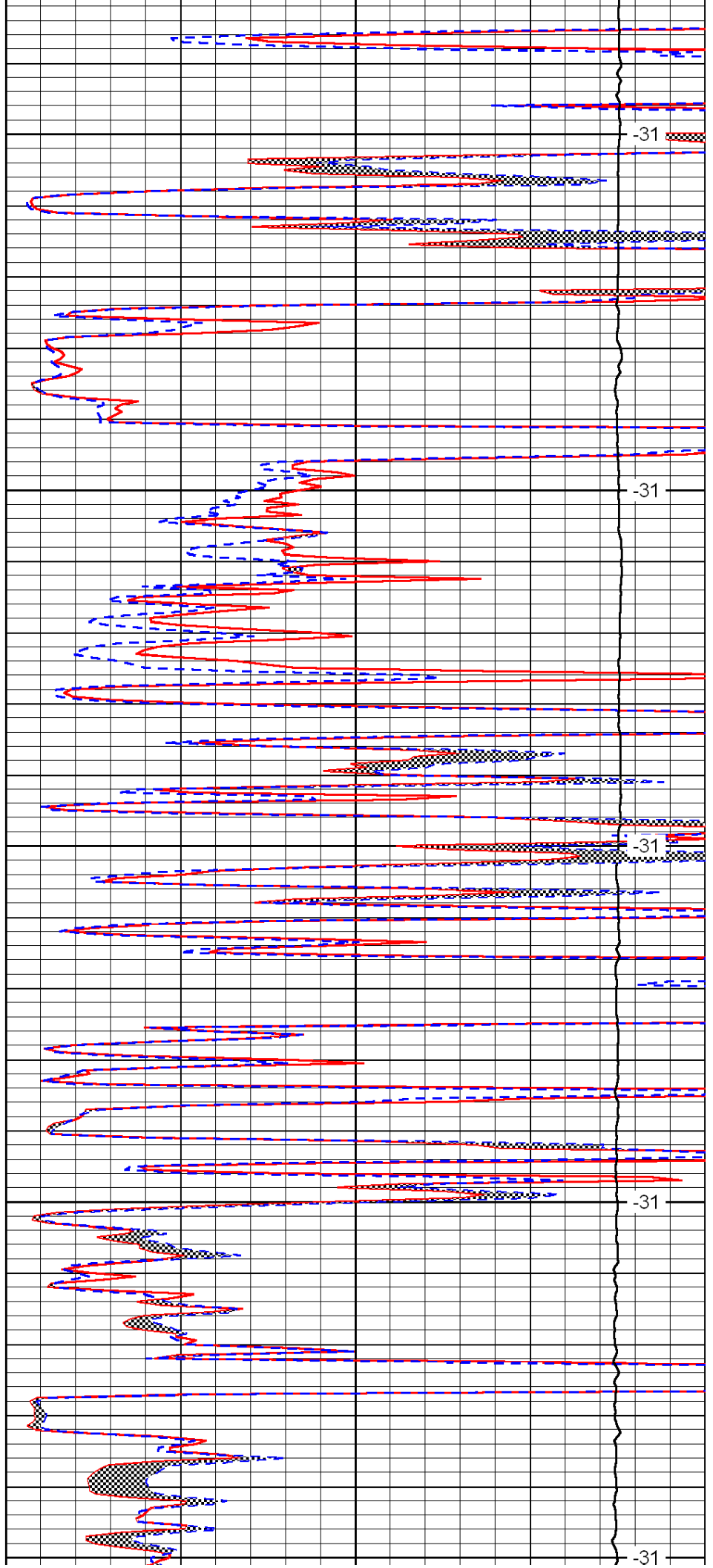
4250

4300

4350

4400

4450



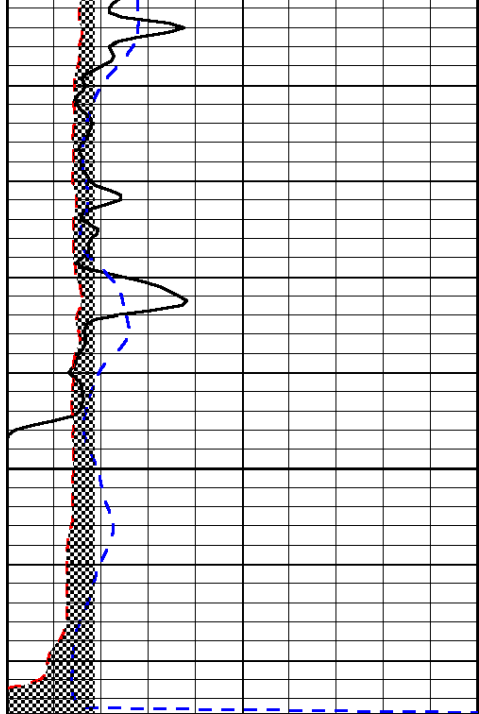
-31

-31

-31

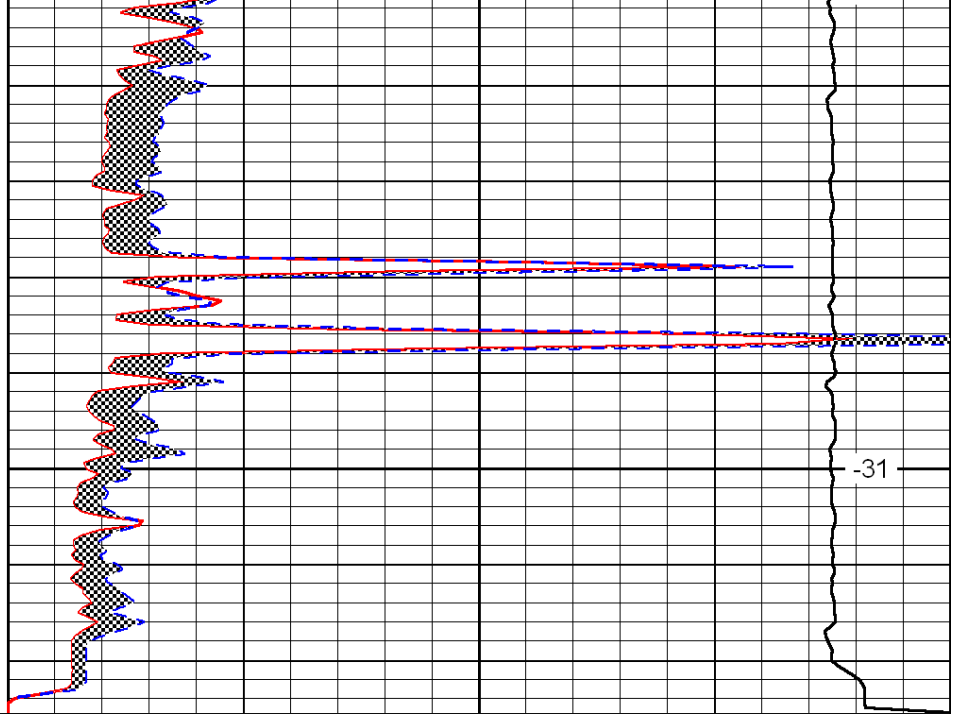
-31

-31



0	Gamma Ray	150
6	Micro Log Caliper (GAPI)	16
-200	SP (mV)	0

4500



0	Micro Inverse 1 X 1	40
0	Micro Normal 2''	40
15000	Line Weight	0

-31

LSPD