



DIGITAL LOG (785) 625-3858

Dual Induction Log

API No.	15-083-21682-00-00	
Company	American Warrior, Inc.	
Well	Borger No. 2-3	
Field	Wildcat	
County	Hodgeman State	Kansas
Location	SE - NE - SE - SW 719' FSL & 2501' FWL	
Sec: 3	Twp: 21 S	Rge: 25 W
Permanent Datum	Ground Level	Elevation 2332
Log Measured From	Kelly Bushing	11 Ft. Above Perm. Datum
Drilling Measured From	Kelly Bushing	
		Other Services CNL/CDL MEL
		Elevation K.B. 2343 D.F. G.L. 2332

Date	11/16/2010
Run Number	One
Depth Driller	4520
Depth Logger	4520
Bottom Logged Interval	4519
Top Log Interval	200
Casing Driller	8.625 @ 234
Casing Logger	234
Bit Size	7.875
Type Fluid in Hole	Chemical
Salinity, ppm CL	4100
Density / Viscosity	9.2 60
pH / Fluid Loss	8.5 9.6
Source of Sample	Flowline
Rm @ Meas. Temp	1.80 @ 60
Rmf @ Meas. Temp	1.35 @ 60
Rmc @ Meas. Temp	2.43 @ 60
Source of Rmf / Rmc	Charts
Rm @ BHT	0.89 @ 121
Operating Rig Time	3 1/2 Hours
Max Rec. Temp. F	121
Equipment Number	15
Location	Hays
Recorded By	B. Becker
Witnessed By	Harley Sayles

<<< Fold Here >>>

All interpretations are opinions based on inferences from electrical or other measurements and we cannot and do not guarantee the accuracy or correctness of any interpretation, and we shall not, except in the case of gross or willful negligence on our part, be liable or responsible for any loss, costs, damages, or expenses incurred or sustained by anyone resulting from any interpretation made by any of our officers, agents or employees. These interpretations are also subject to our general terms and conditions set out in our current Price Schedule.

Comments

Thank you for using Log-Tech, Inc.
 (785) 625-3858
 Ness City, Ks;
 13 South to X Rd;
 8.6 West; North Into

Database File: c:\warrior\data\amwar_borger no. 2-3\amwarhd.db
 Dataset Pathname: DIL\awstc
 Presentation Format: dil2in
 Dataset Creation: Tue Nov 16 08:35:50 2010
 Charted by: Depth in Feet scaled 1:600

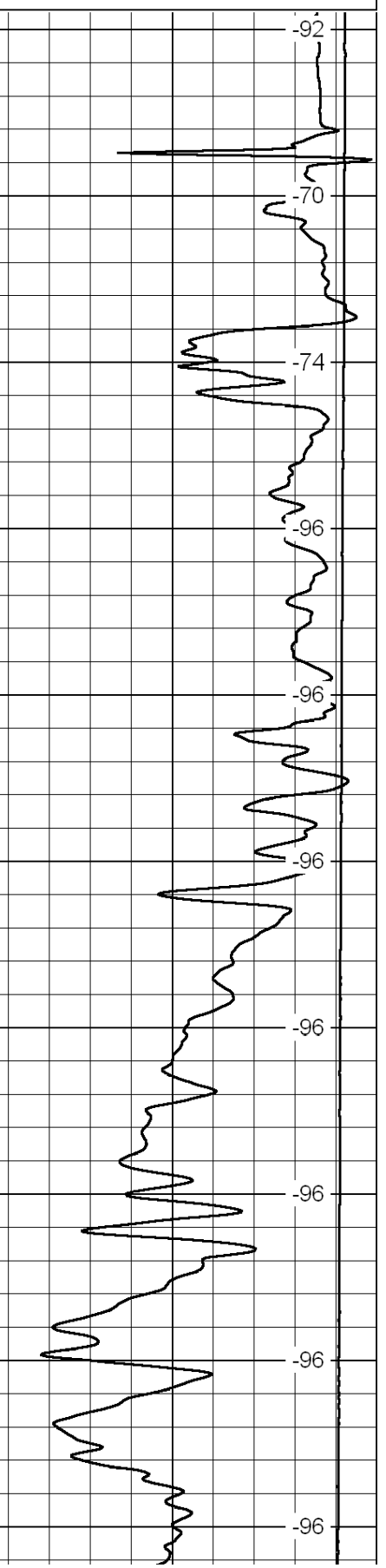
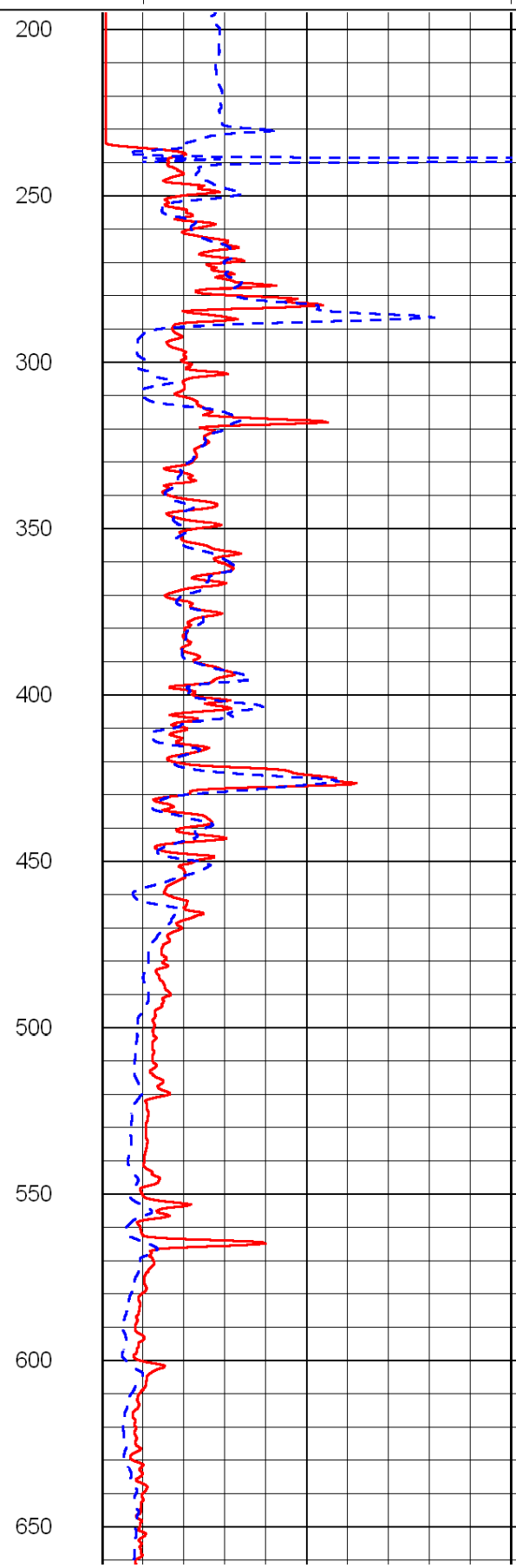
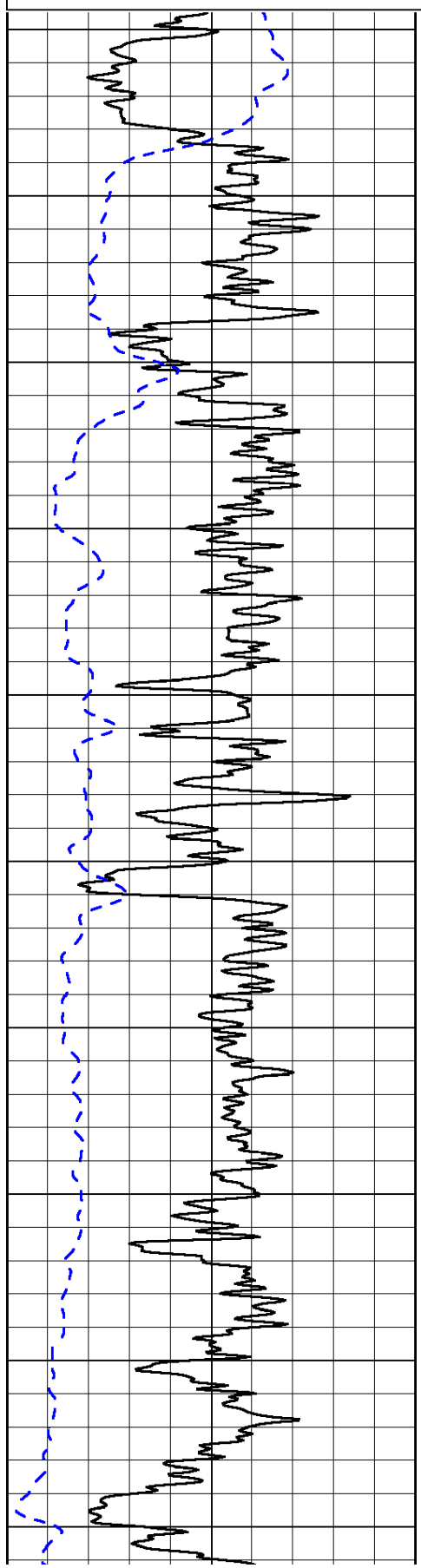
0	Gamma Ray	150
-200	SP (mV)	0

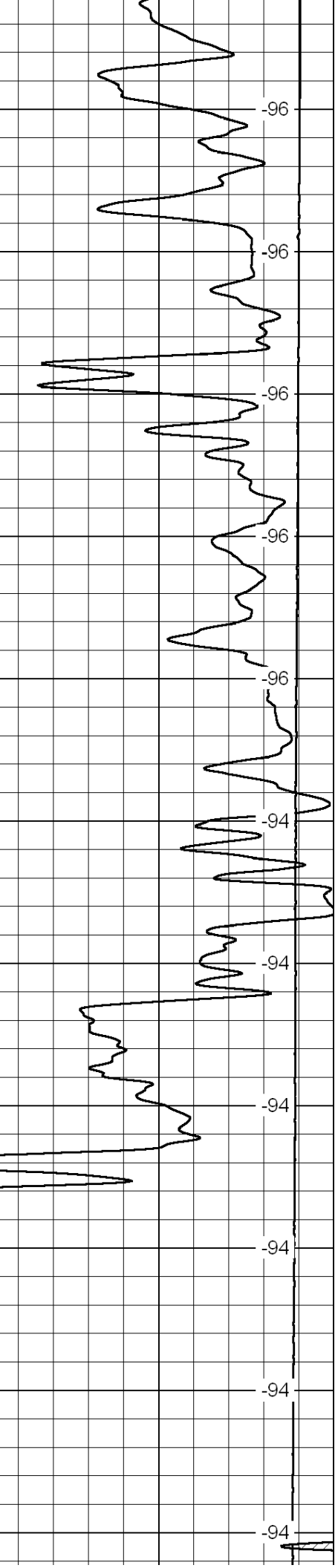
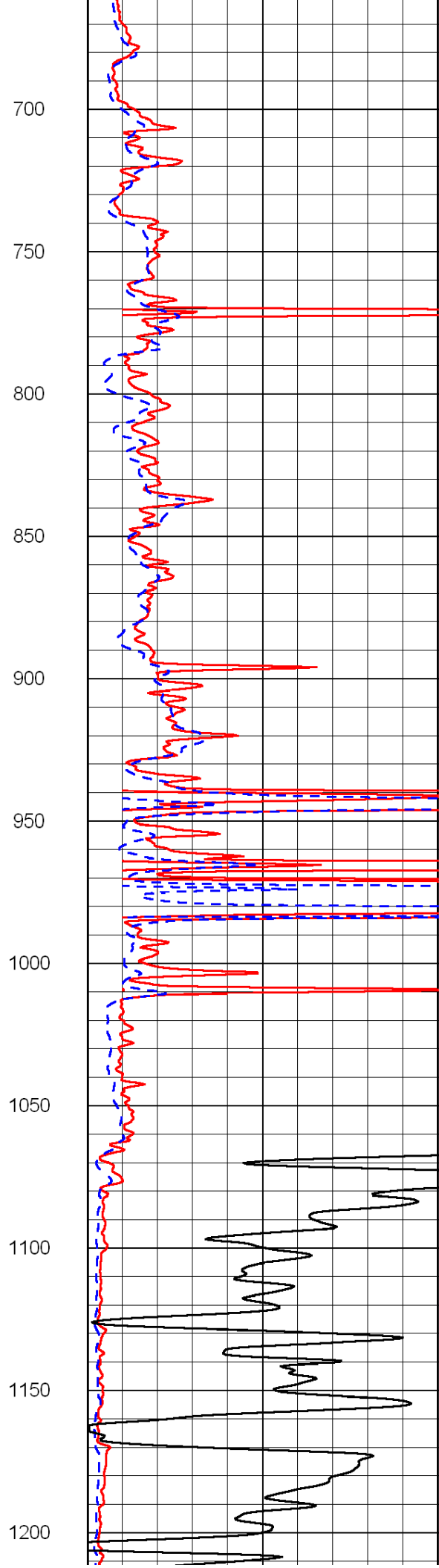
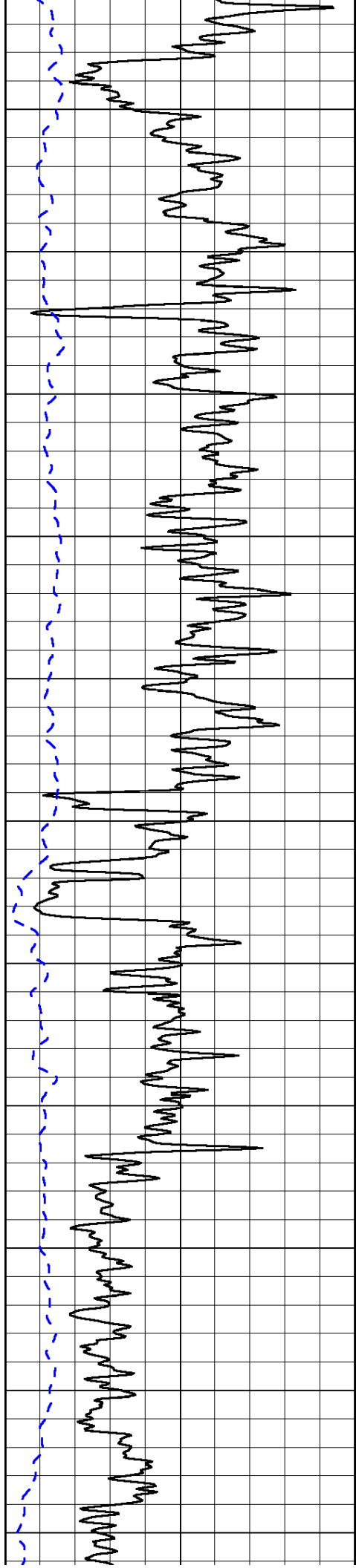
0	Shallow Resistivity	50
0	Deep Resistivity	50

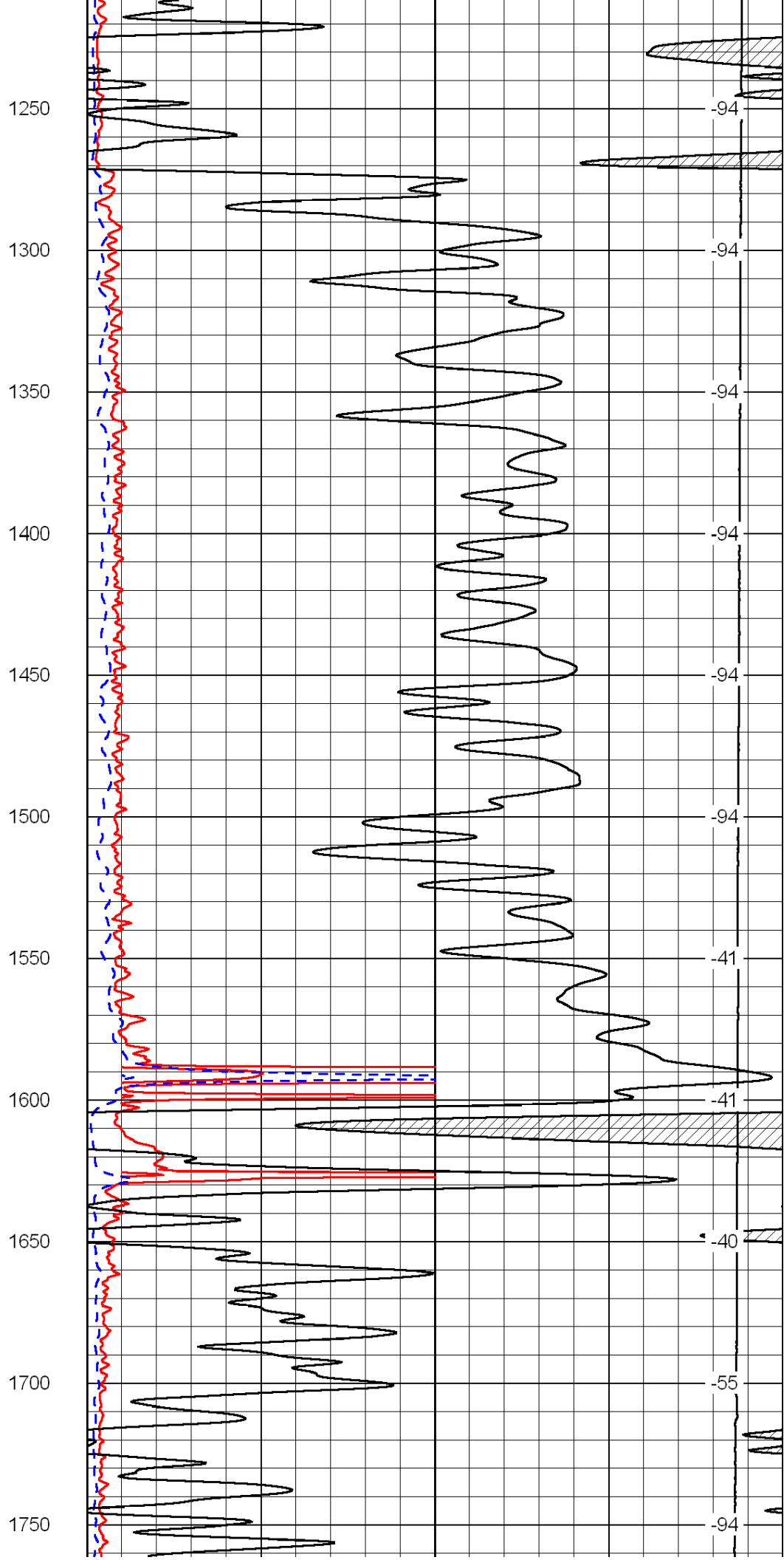
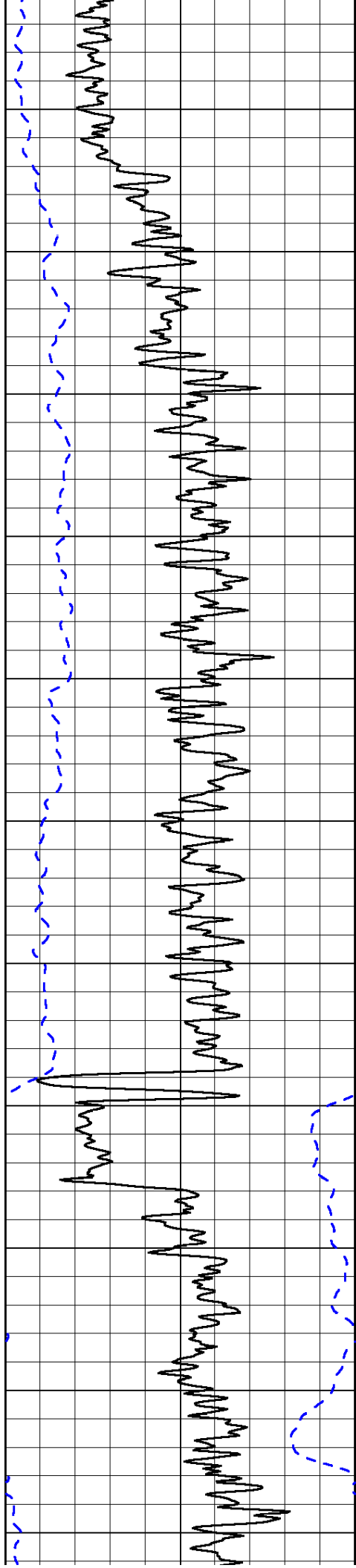
LSPD

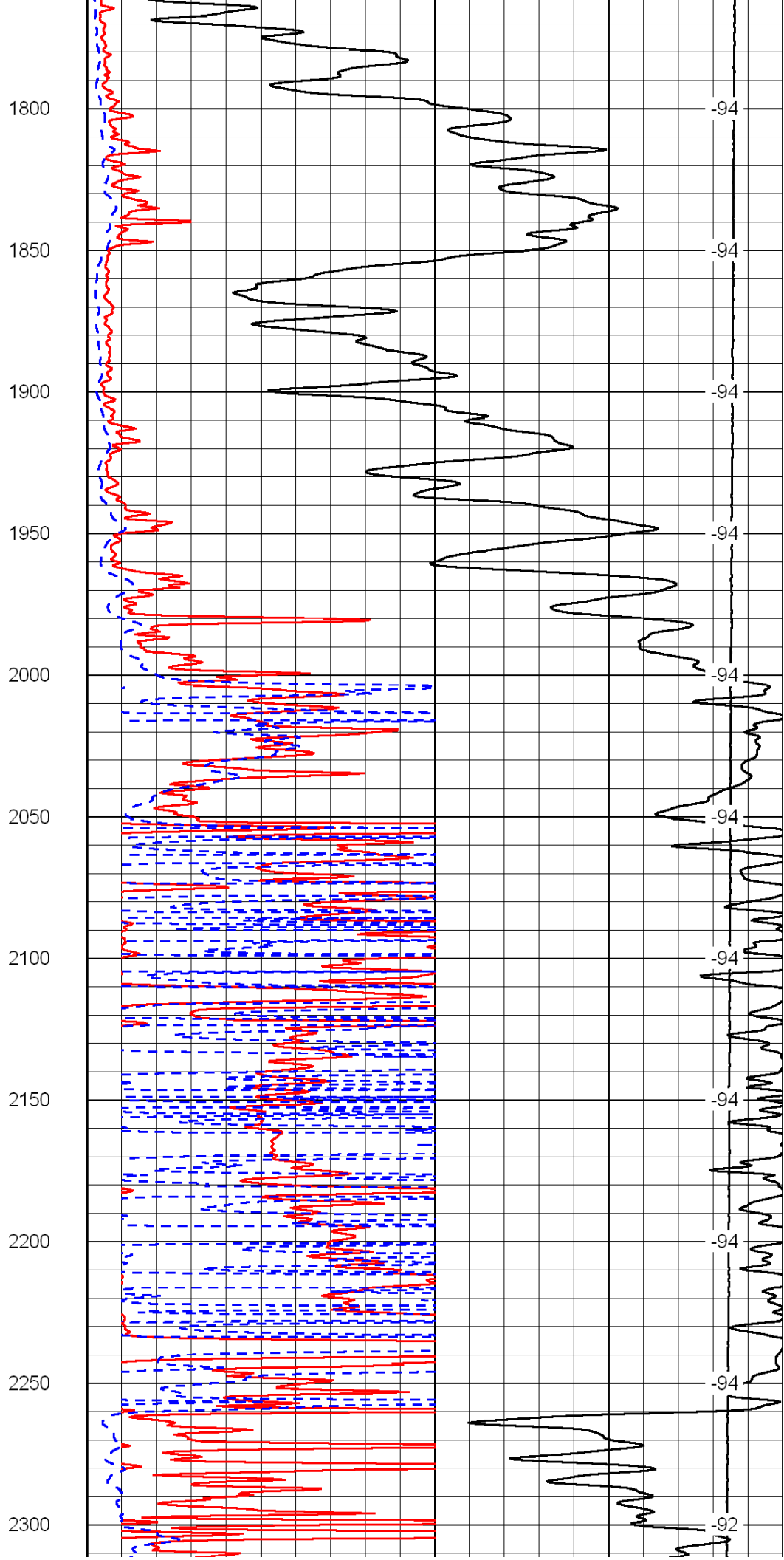
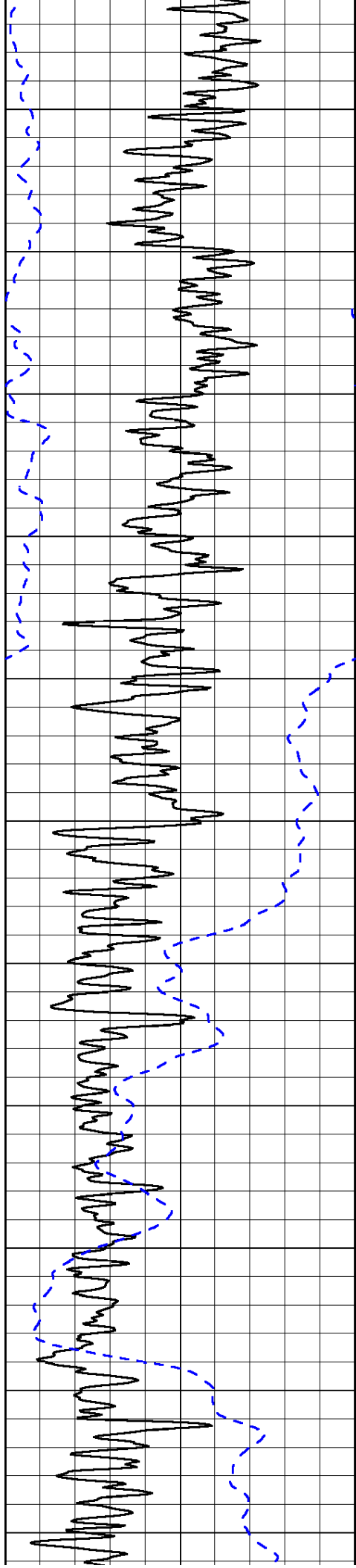
1000	Conductivity	0
15000	Line Tension	0

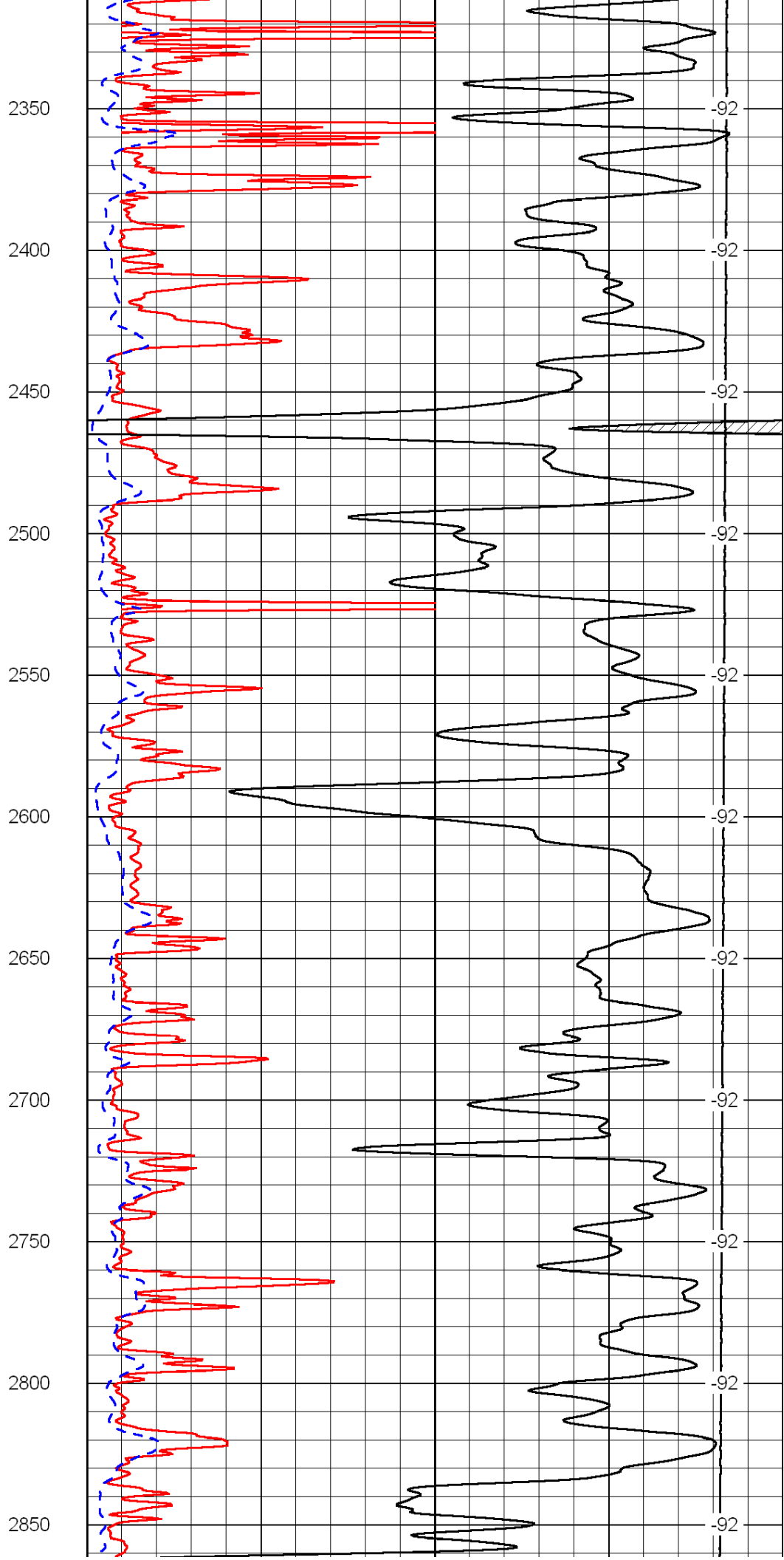
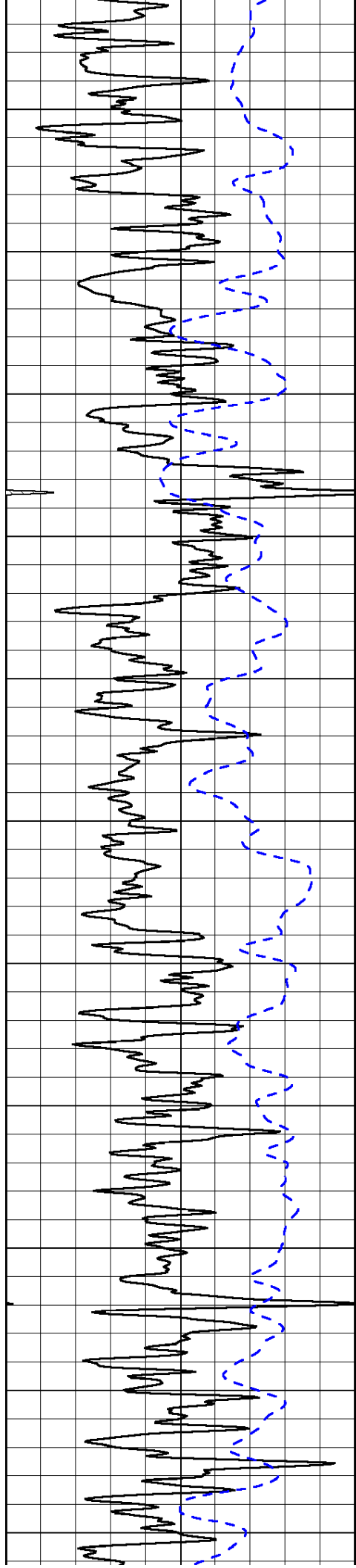
50	Shallow Resistivity	500
50	Deep Resistivity	500

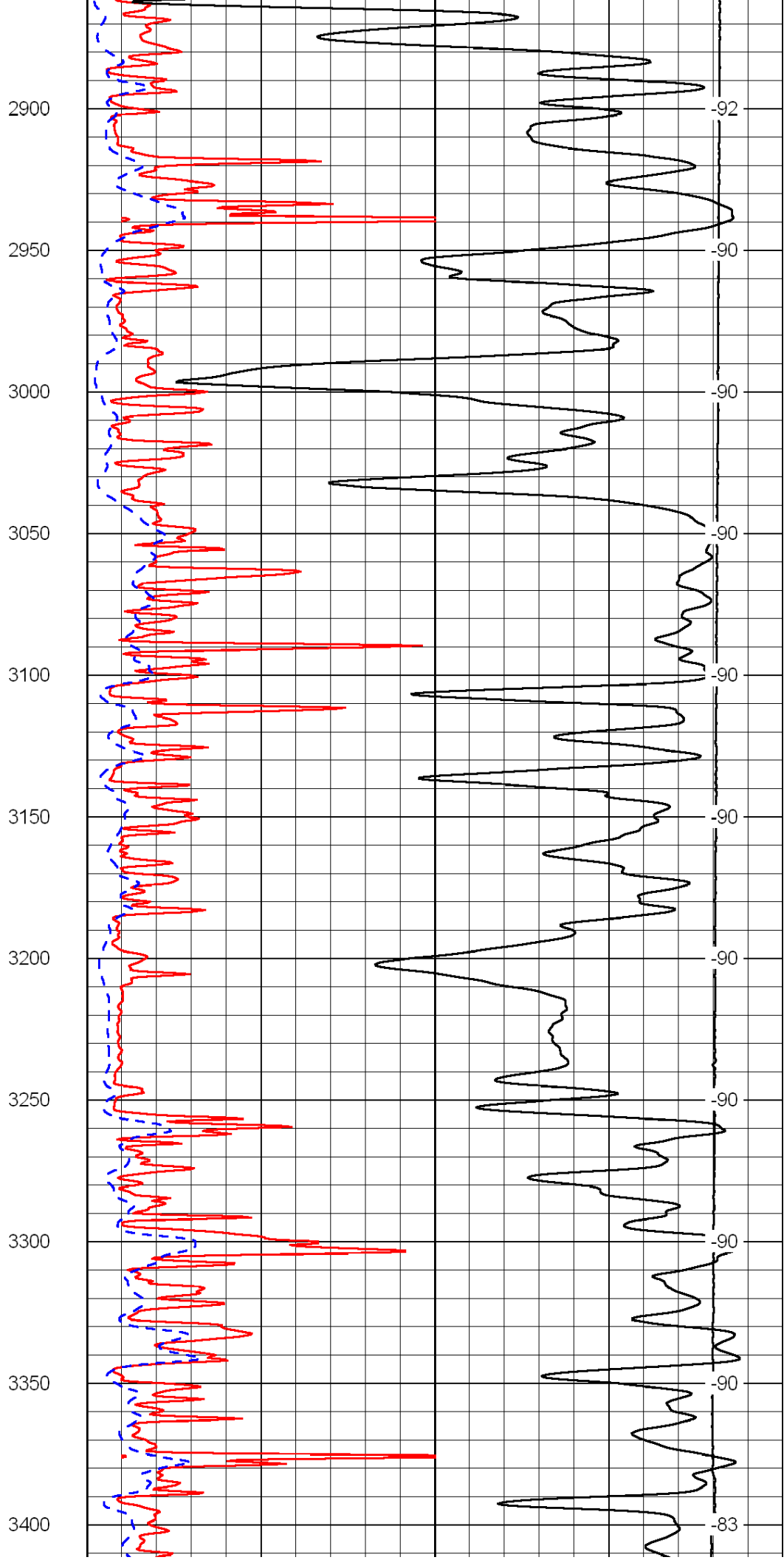
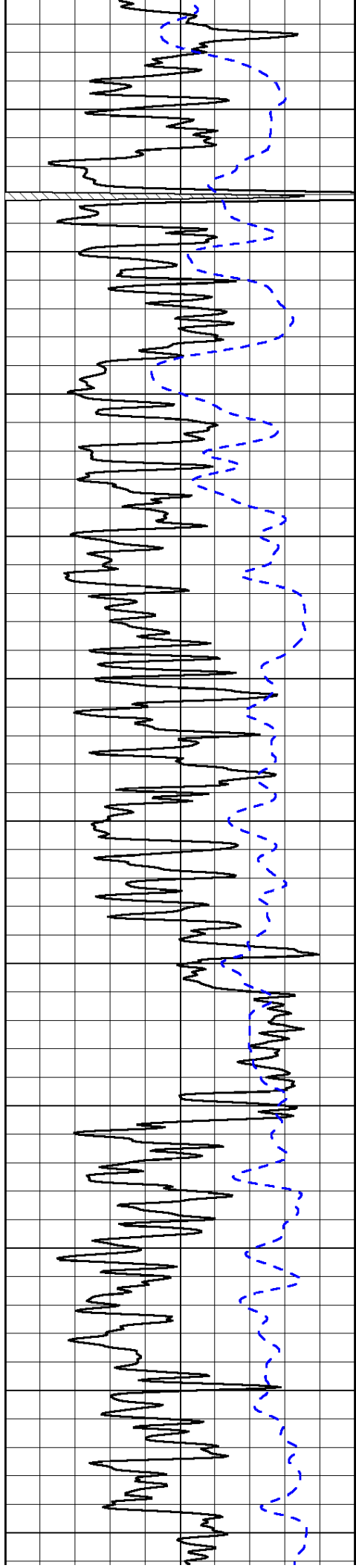


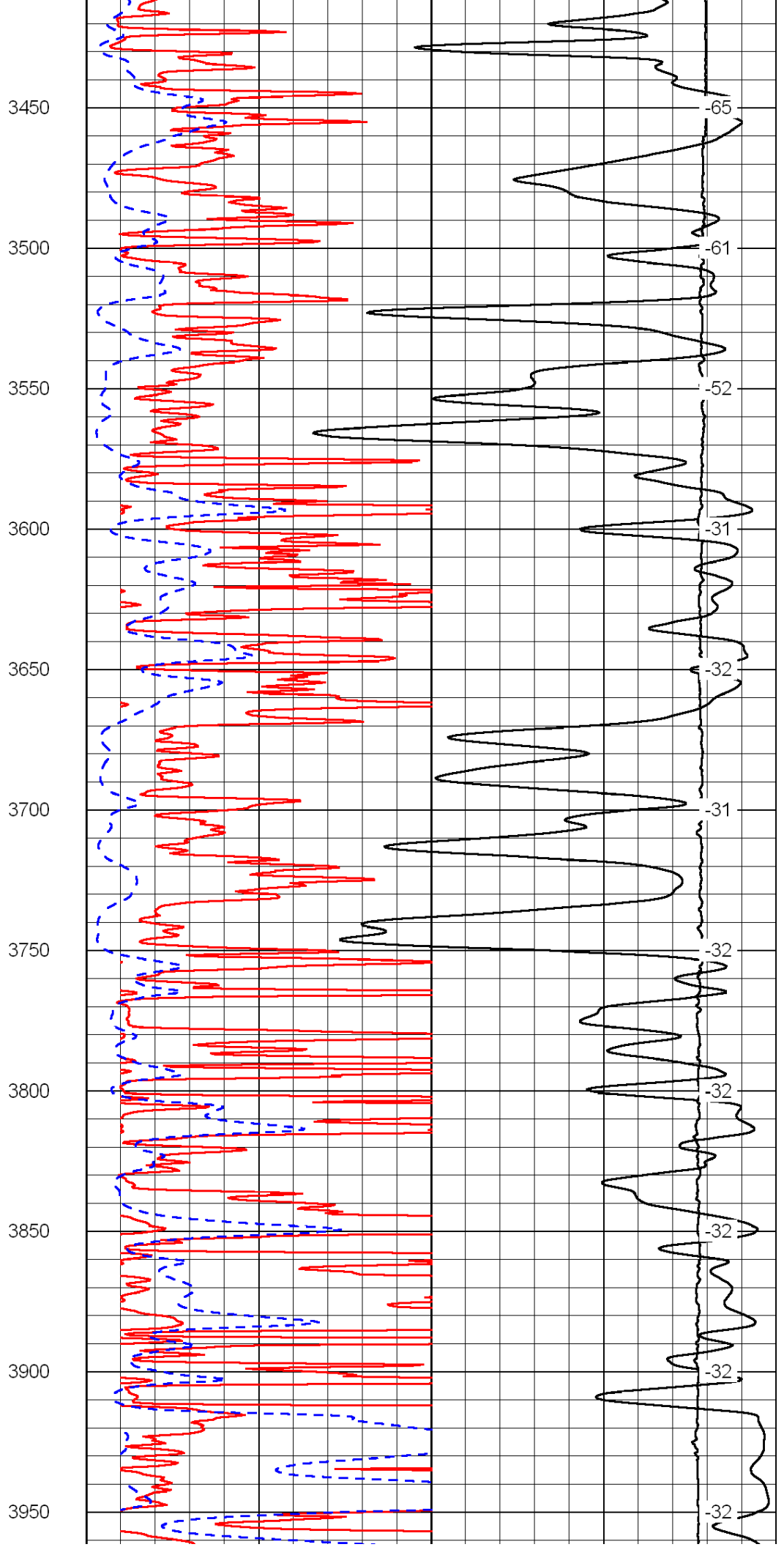
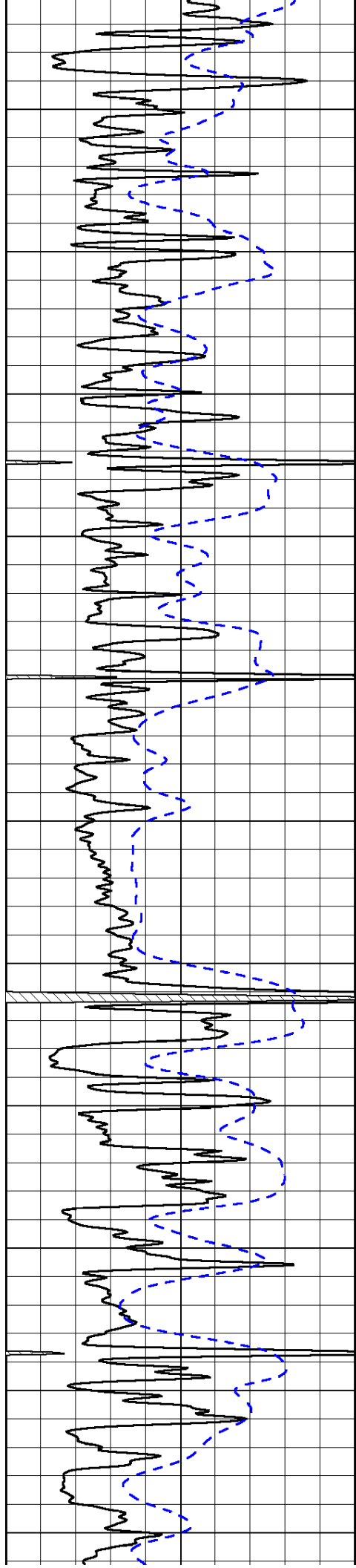


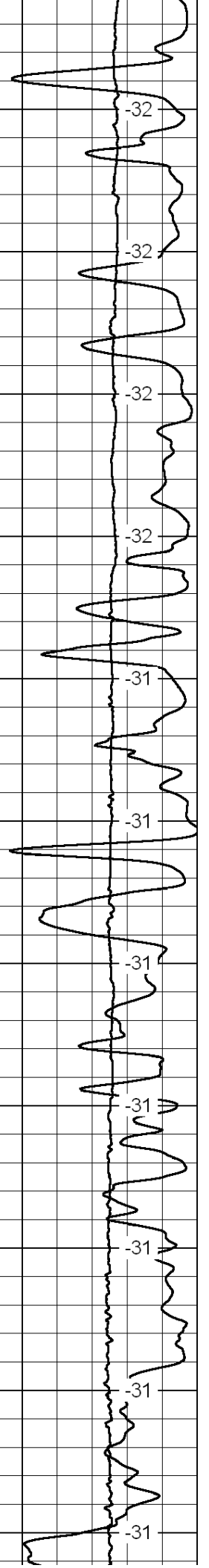
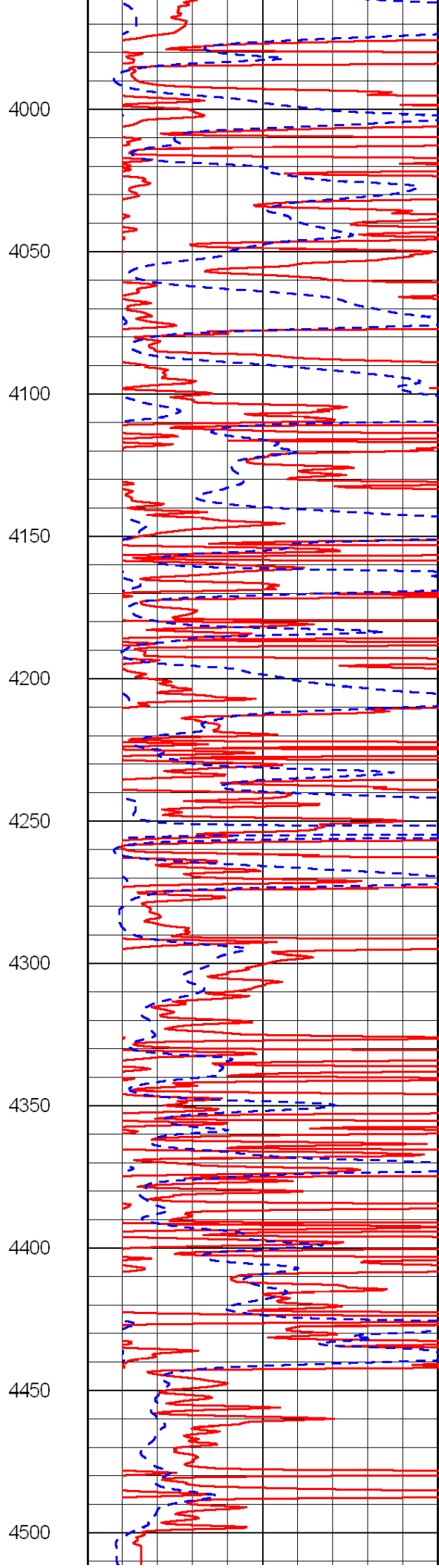
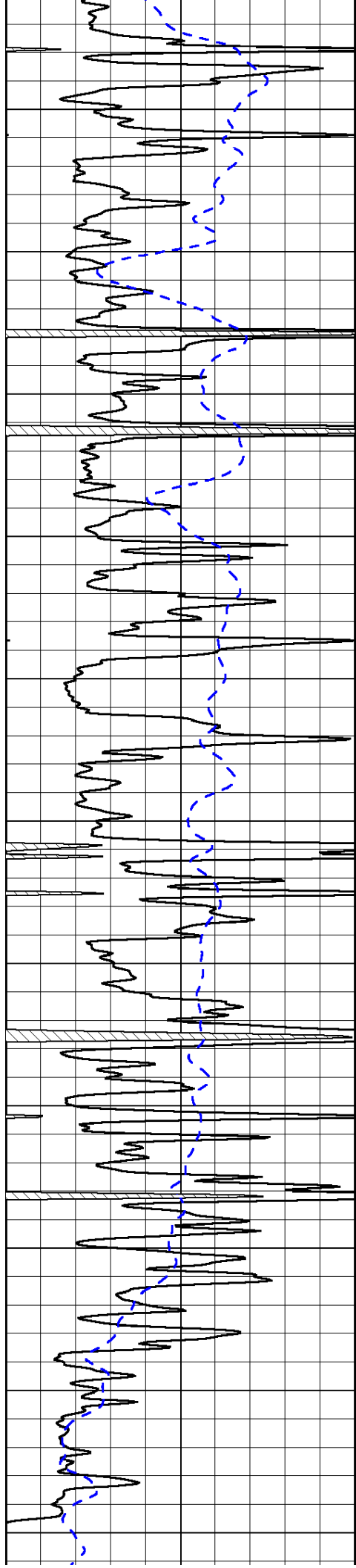


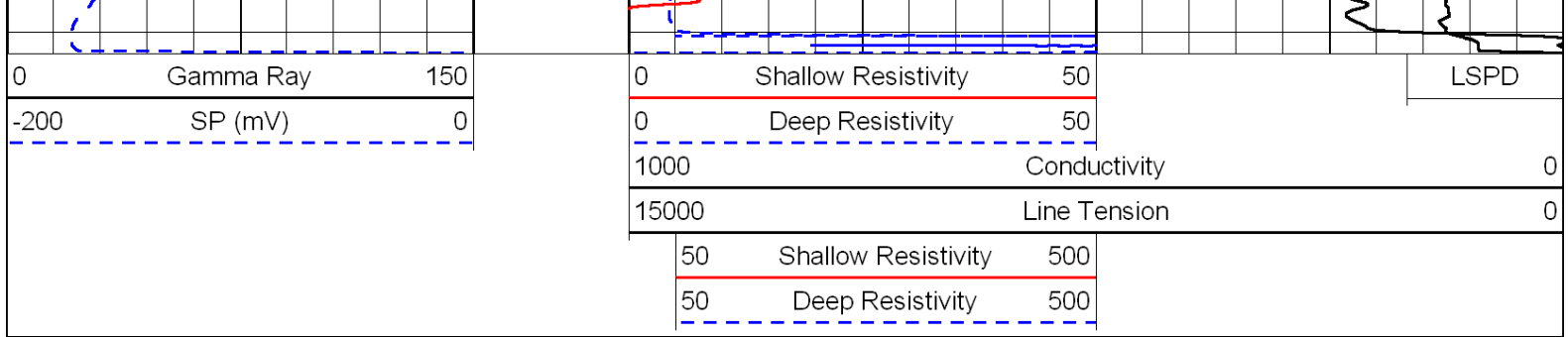




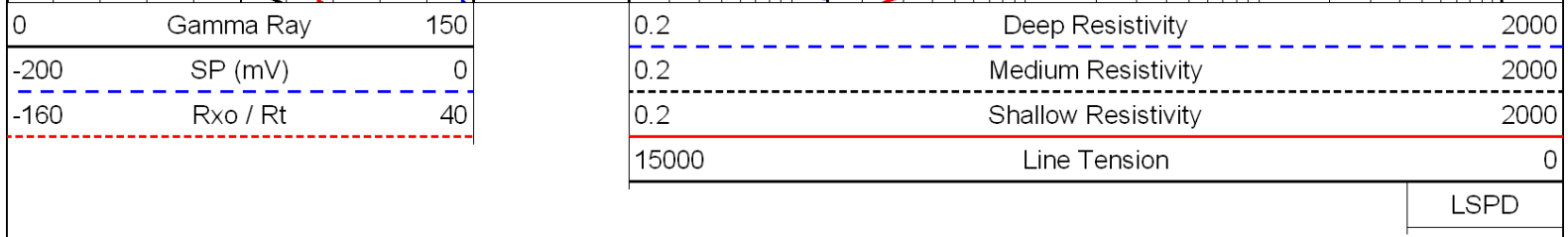
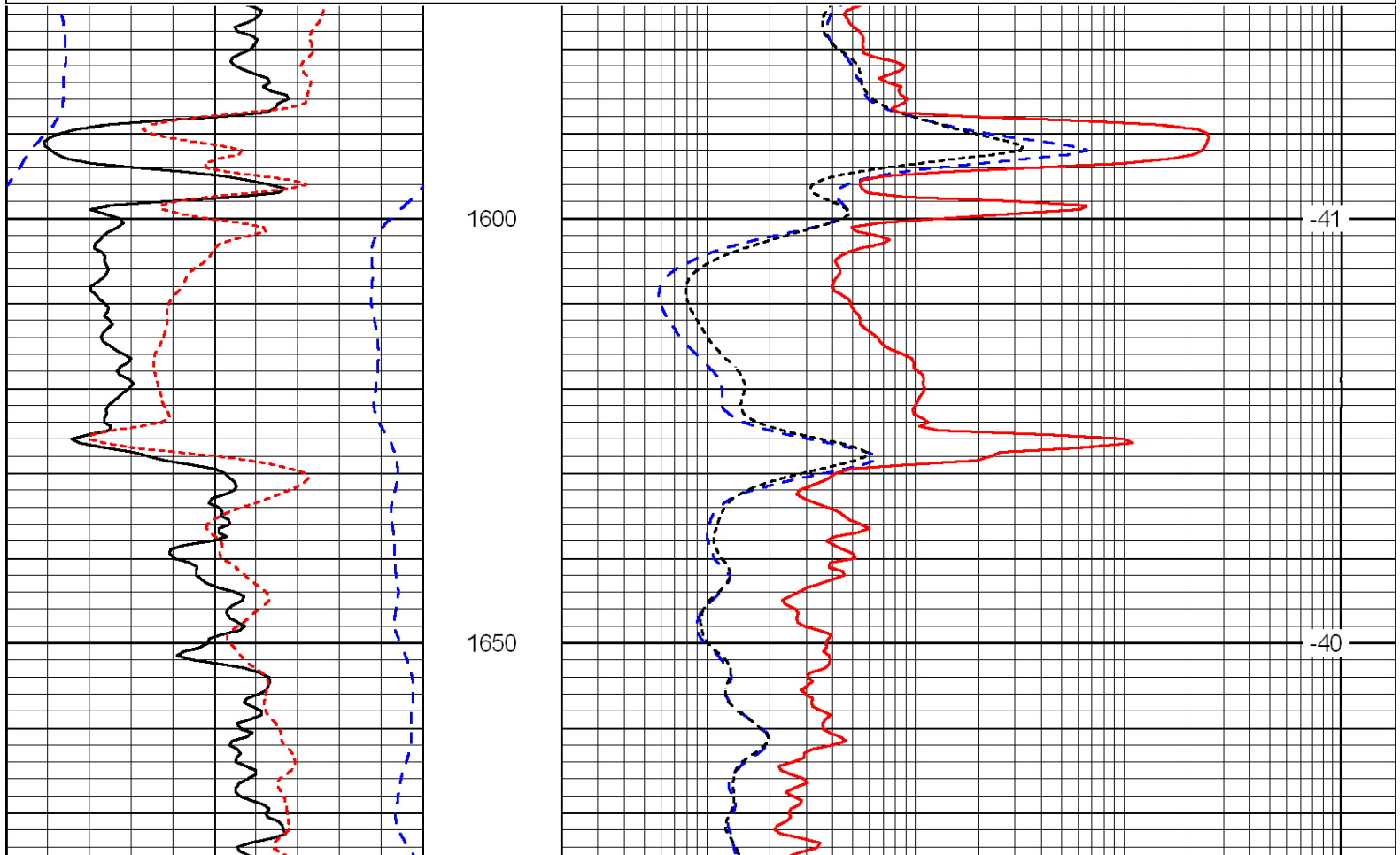
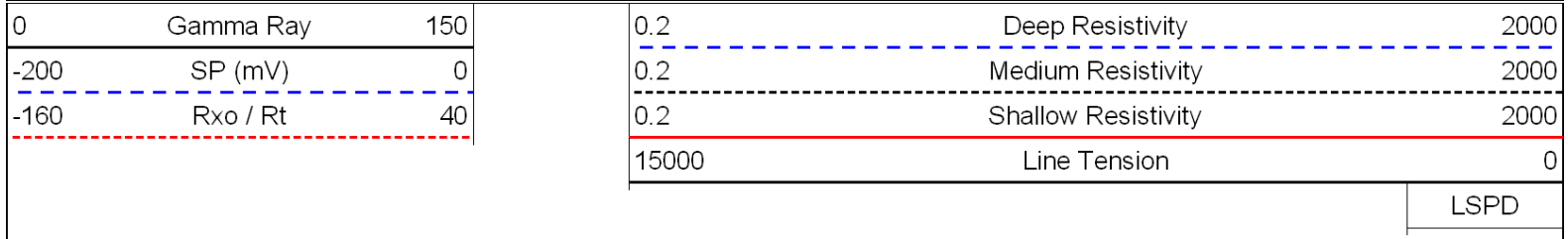








Database File: c:\warrior\data\amwar_borger no. 2-3\amwarhd.db
 Dataset Pathname: DIL/awstk
 Presentation Format: dil
 Dataset Creation: Tue Nov 16 08:35:50 2010
 Charted by: Depth in Feet scaled 1:240



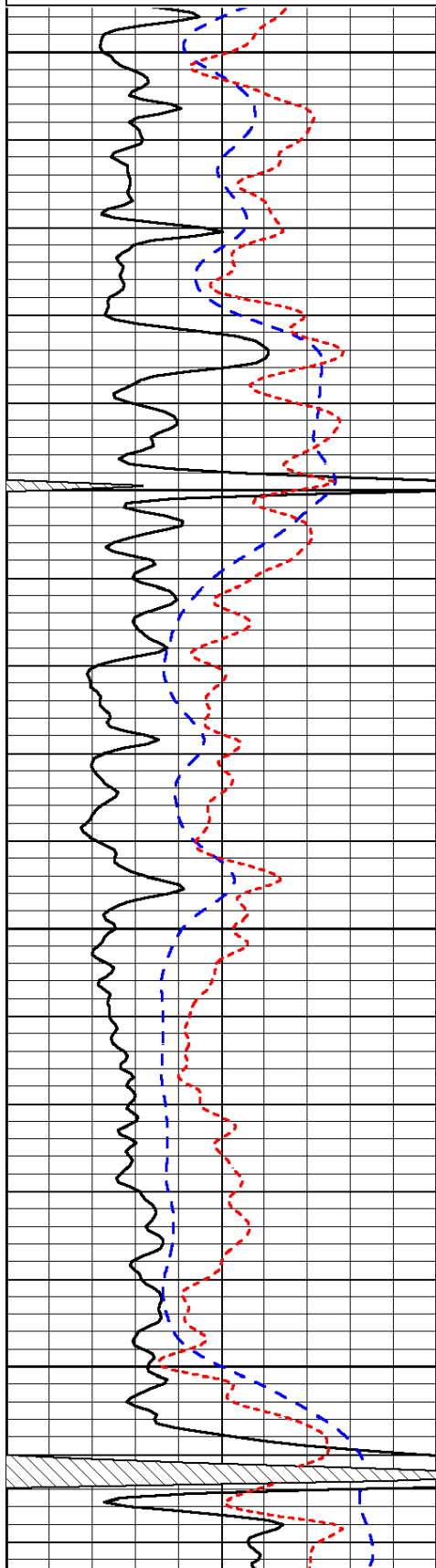
Database File: c:\warrior\data\amwar_borger no. 2-3\amwarhd.db

Database File: c:\wamond\data\amwdr_borger no. 2\amwamda.db
 Dataset Pathname: DIL\awstk
 Presentation Format: dil
 Dataset Creation: Tue Nov 16 08:35:50 2010
 Charted by: Depth in Feet scaled 1:240

0	Gamma Ray	150
-200	SP (mV)	0
-160	Rxo / Rt	40

0.2	Deep Resistivity	2000
0.2	Medium Resistivity	2000
0.2	Shallow Resistivity	2000
15000	Line Tension	0

LSPD

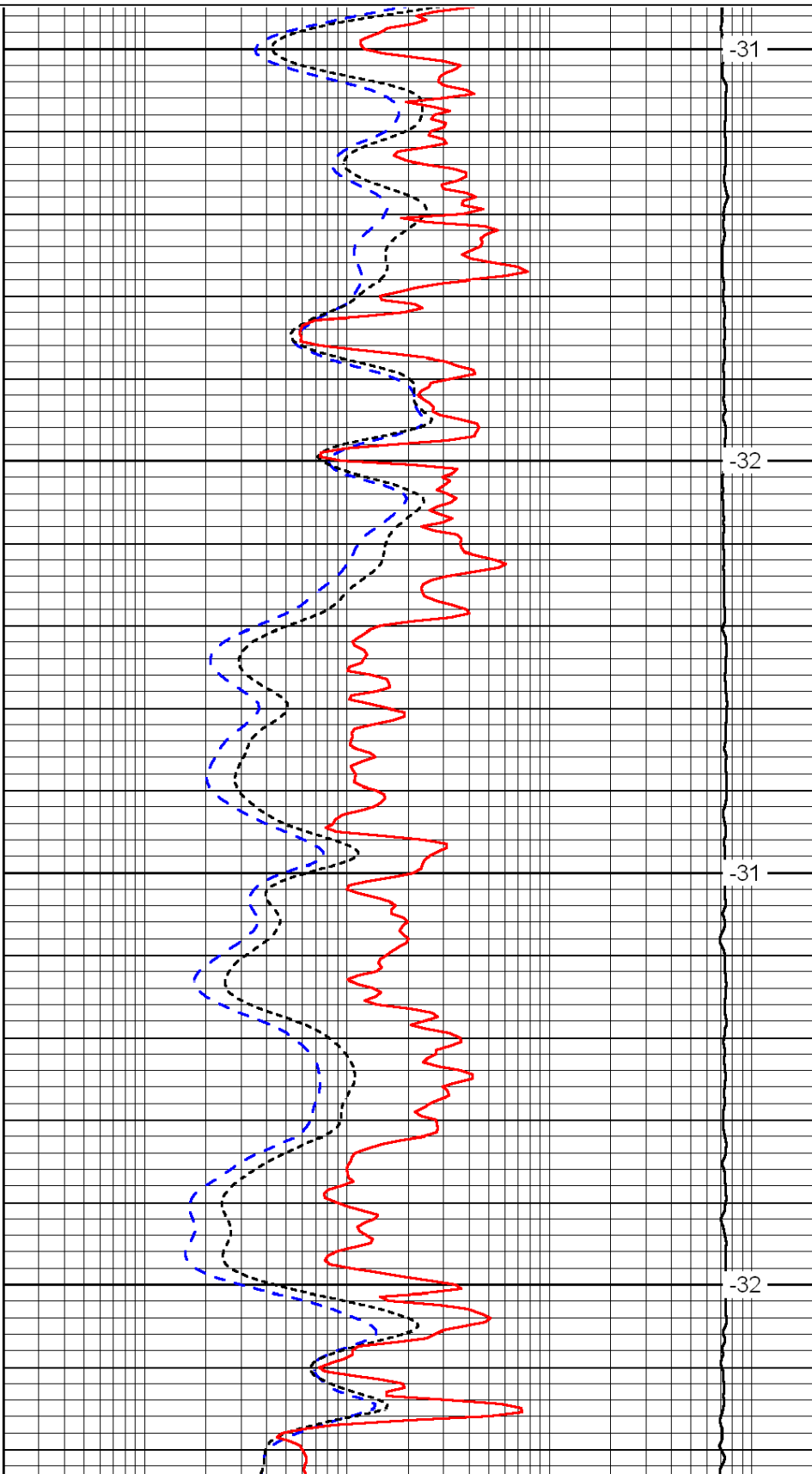


3600

3650

3700

3750

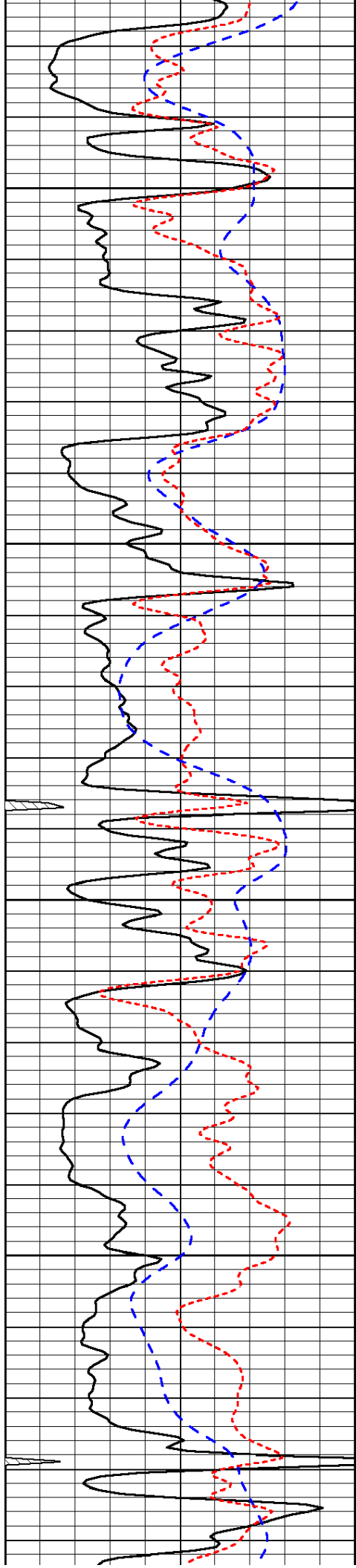


-31

-32

-31

-32

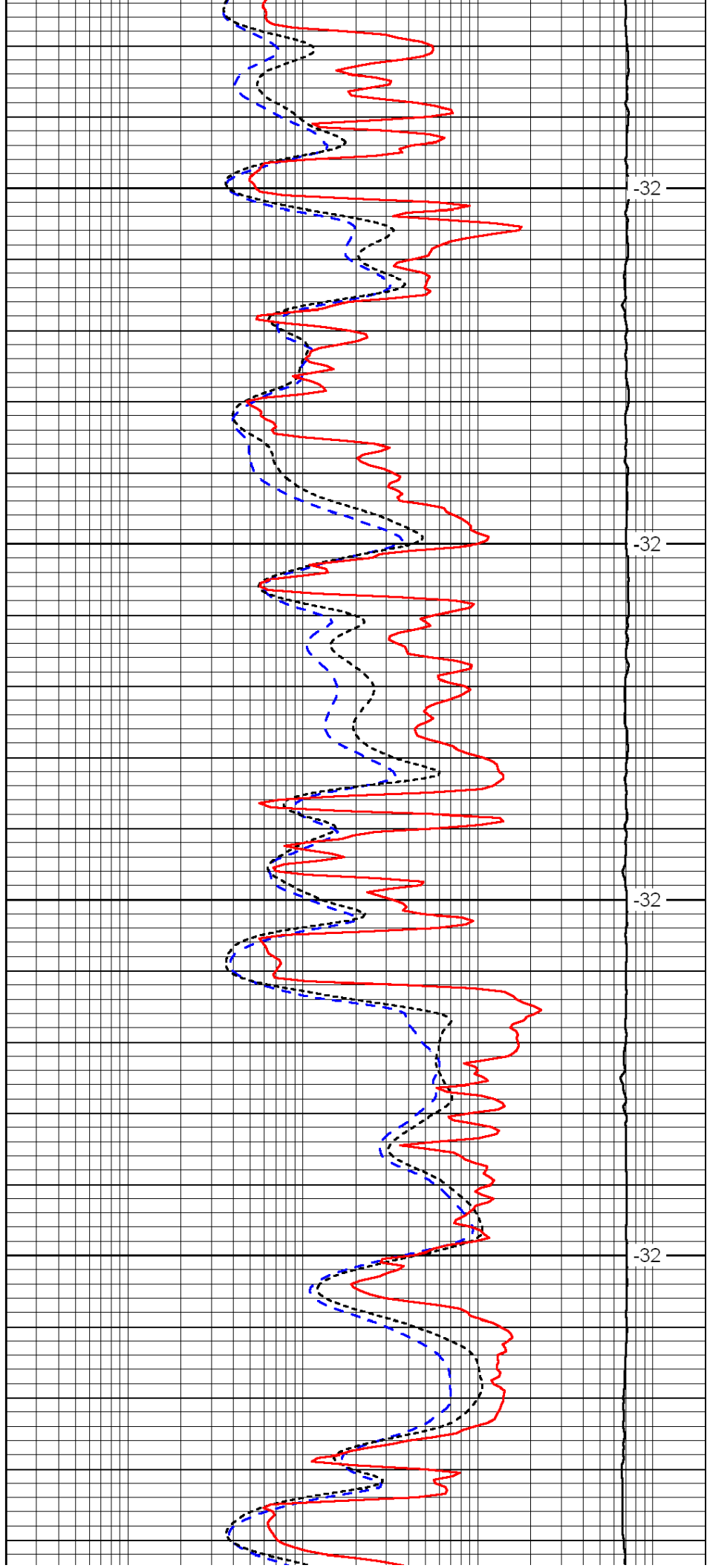


3800

3850

3900

3950

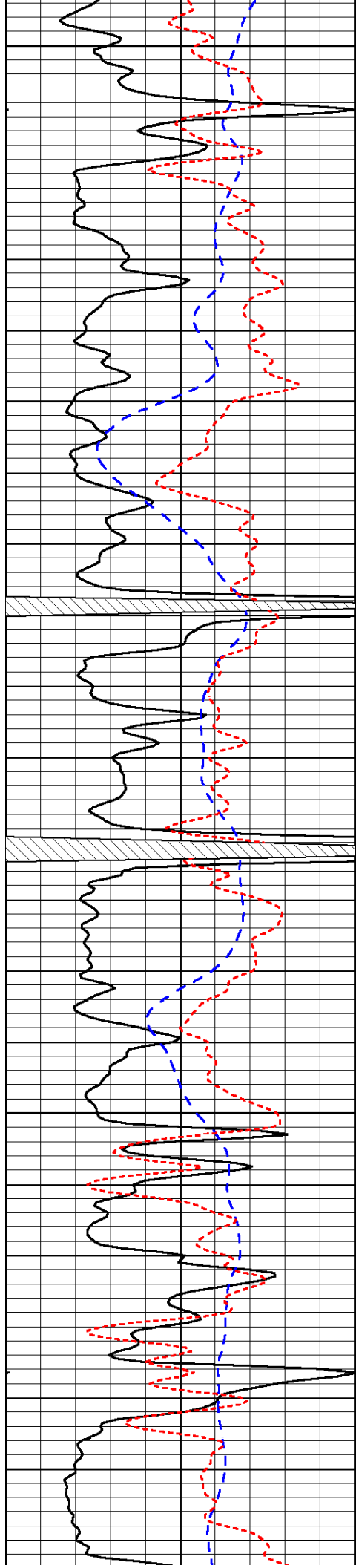


-32

-32

-32

-32



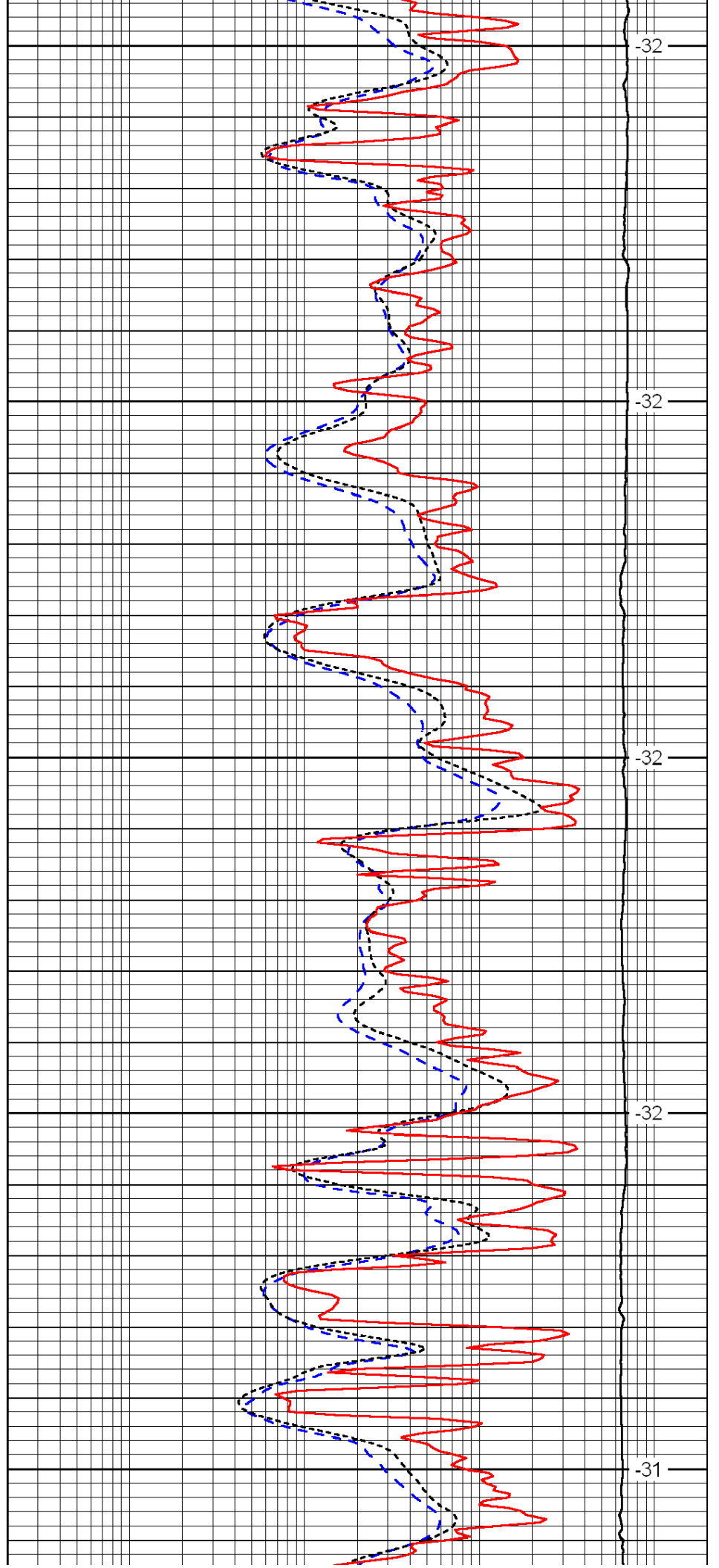
4000

4050

4100

4150

4200



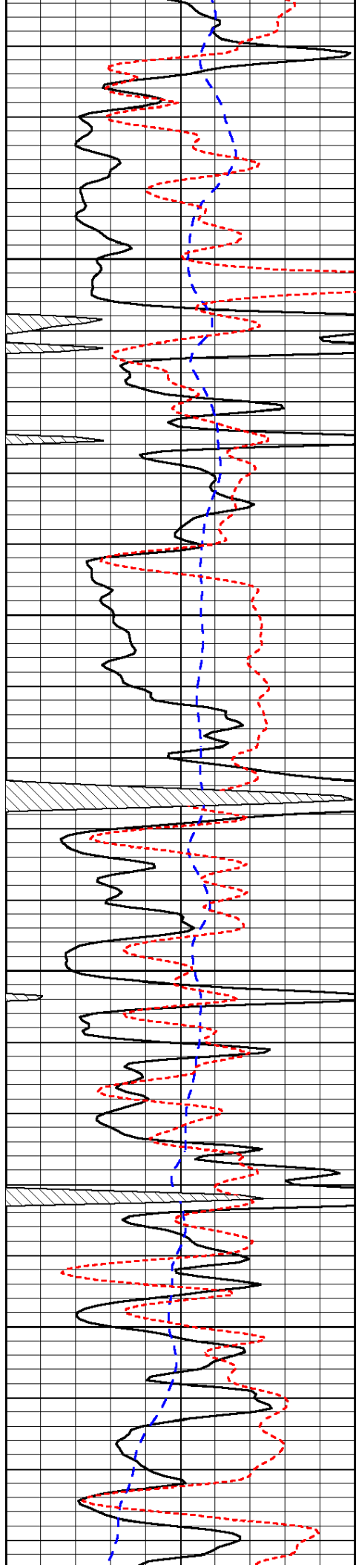
-32

-32

-32

-32

-31

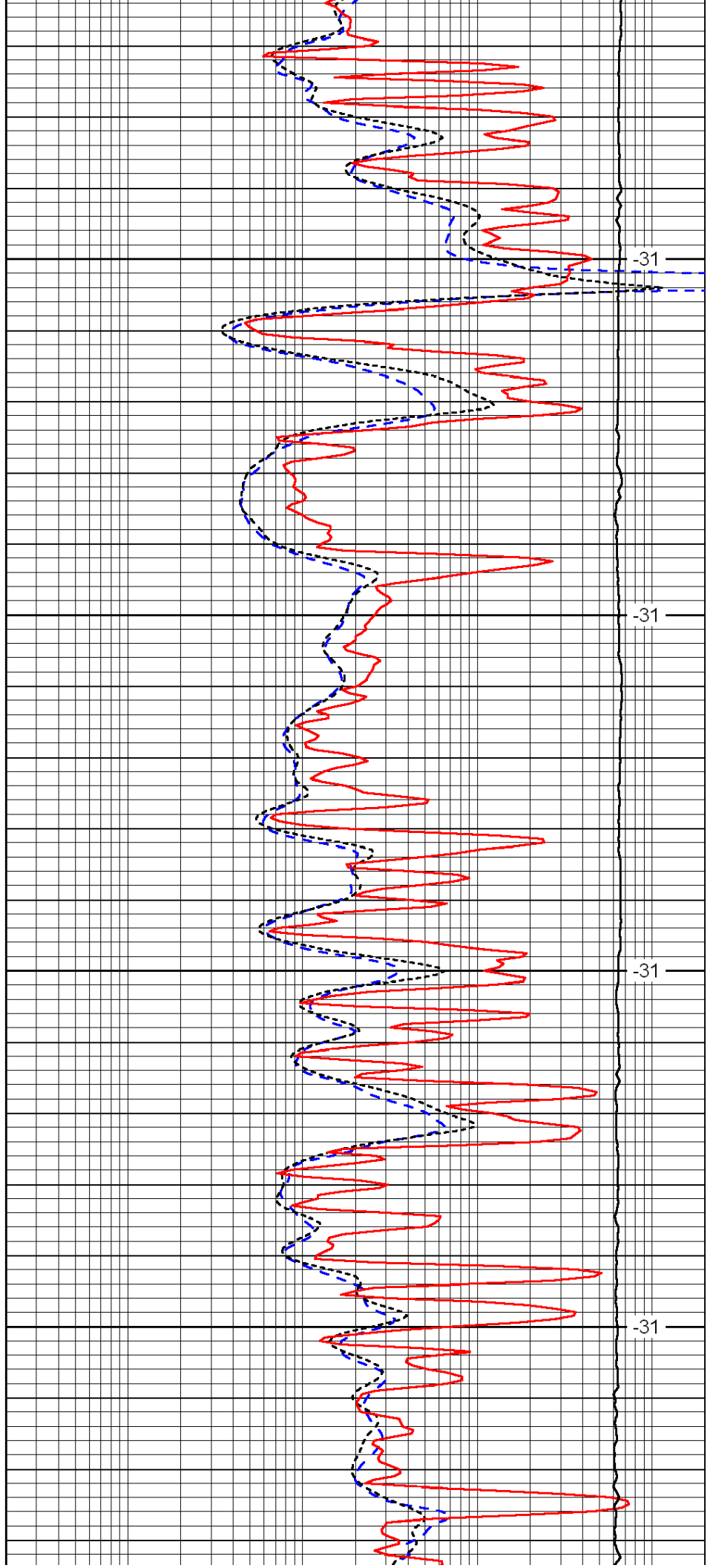


4250

4300

4350

4400

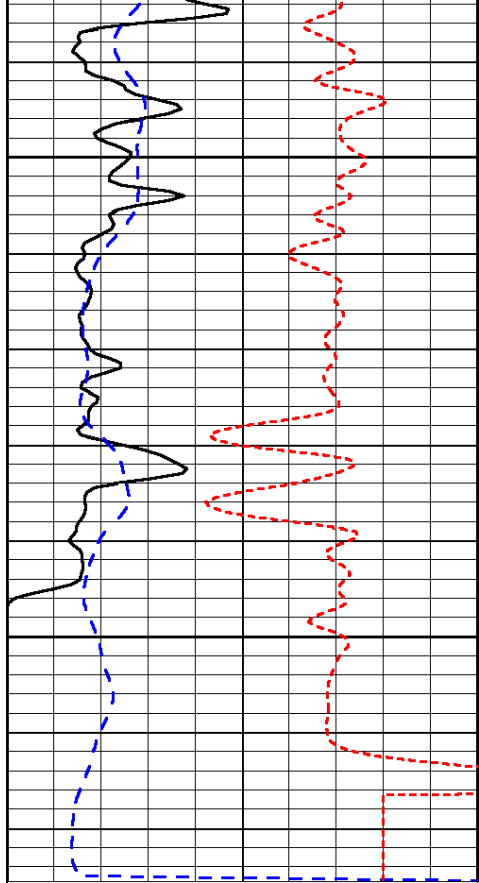


-31

-31

-31

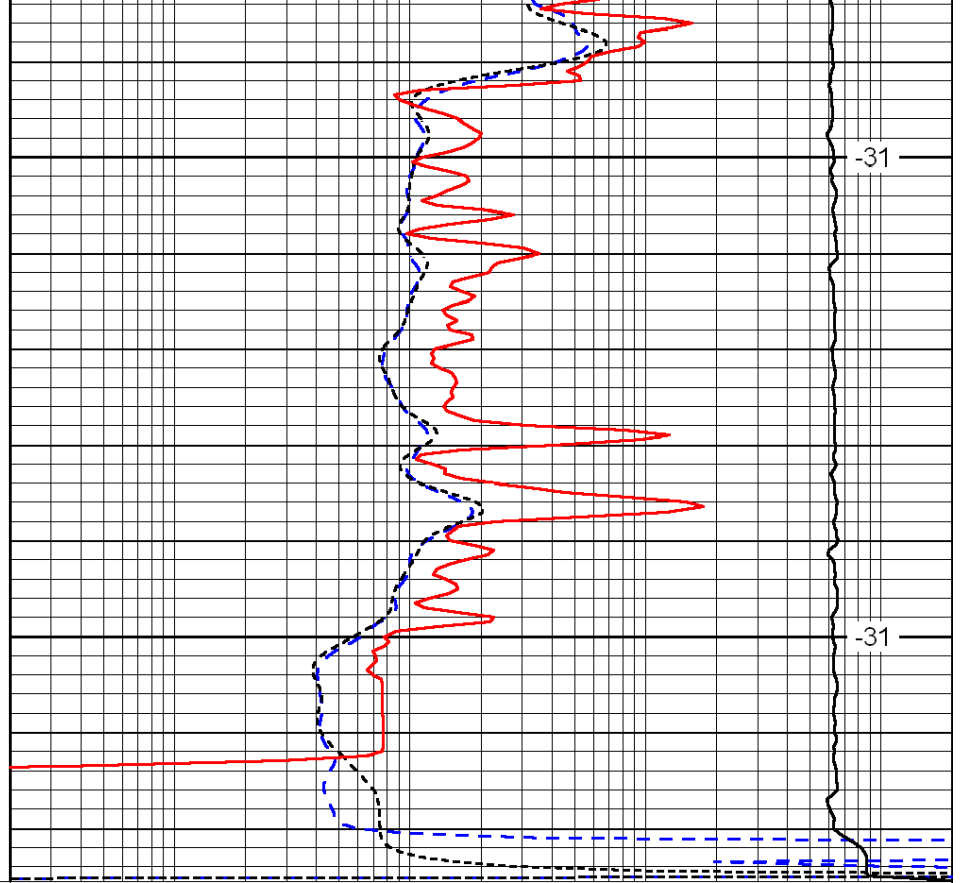
-31



0	Gamma Ray	150
-200	SP (mV)	0
-160	Rxo / Rt	40

4450

4500



-31

-31

0.2	Deep Resistivity	2000
0.2	Medium Resistivity	2000
0.2	Shallow Resistivity	2000
15000	Line Tension	0

LSPD