



Dual Compensated Porosity Log

DIGITAL LOG (785) 625-3858

API No. 15-083-21682-00-00

Company American Warrior, Inc.
 Well Borger No. 2-3
 Field Wildcat
 County Hodgeman State Kansas

Location SE - NE - SE - SW
 719' FSL & 2501' FWL

Other Services
 DIL
 MEL

Permanent Datum Ground Level Elevation 2332
 Log Measured From Kelly Bushing 11 Ft. Above Perm. Datum
 Drilling Measured From Kelly Bushing

Sec: 3 Twp: 21 S Rge: 25 W

Elevation
 K.B. 2343
 D.F.
 G.L. 2332

Date 11/16/2010

Run Number One

Type Log CNL / CDL

Depth Driller 4520

Depth Logger 4520

Bottom Logged Interval 4499

Top Logged Interval 3600

Type Fluid In Hole Chemical

Salinity, PPM CL 4100

Density 9.2

Level Full

Max. Rec. Temp. F 121

Operating Rig Time 3 1/2 Hours

Equipment -- Location 15 Hays

Recorded By B. Becker

Witnessed By Harley Sayles

Borehole Record				Casing Record			
Run No.	Bit	From	To	Size	Wgt.	From	To
1	12.25	00	234	8.625	24#	00	234
2	7.875	234	4520				

<<< Fold Here >>>

All interpretations are opinions based on inferences from electrical or other measurements and we cannot and do not guarantee the accuracy or correctness of any interpretation, and we shall not, except in the case of gross or willful negligence on our part, be liable or responsible for any loss, costs, damages, or expenses incurred or sustained by anyone resulting from any interpretation made by any of our officers, agents or employees. These interpretations are also subject to our general terms and conditions set out in our current Price Schedule.

Comments

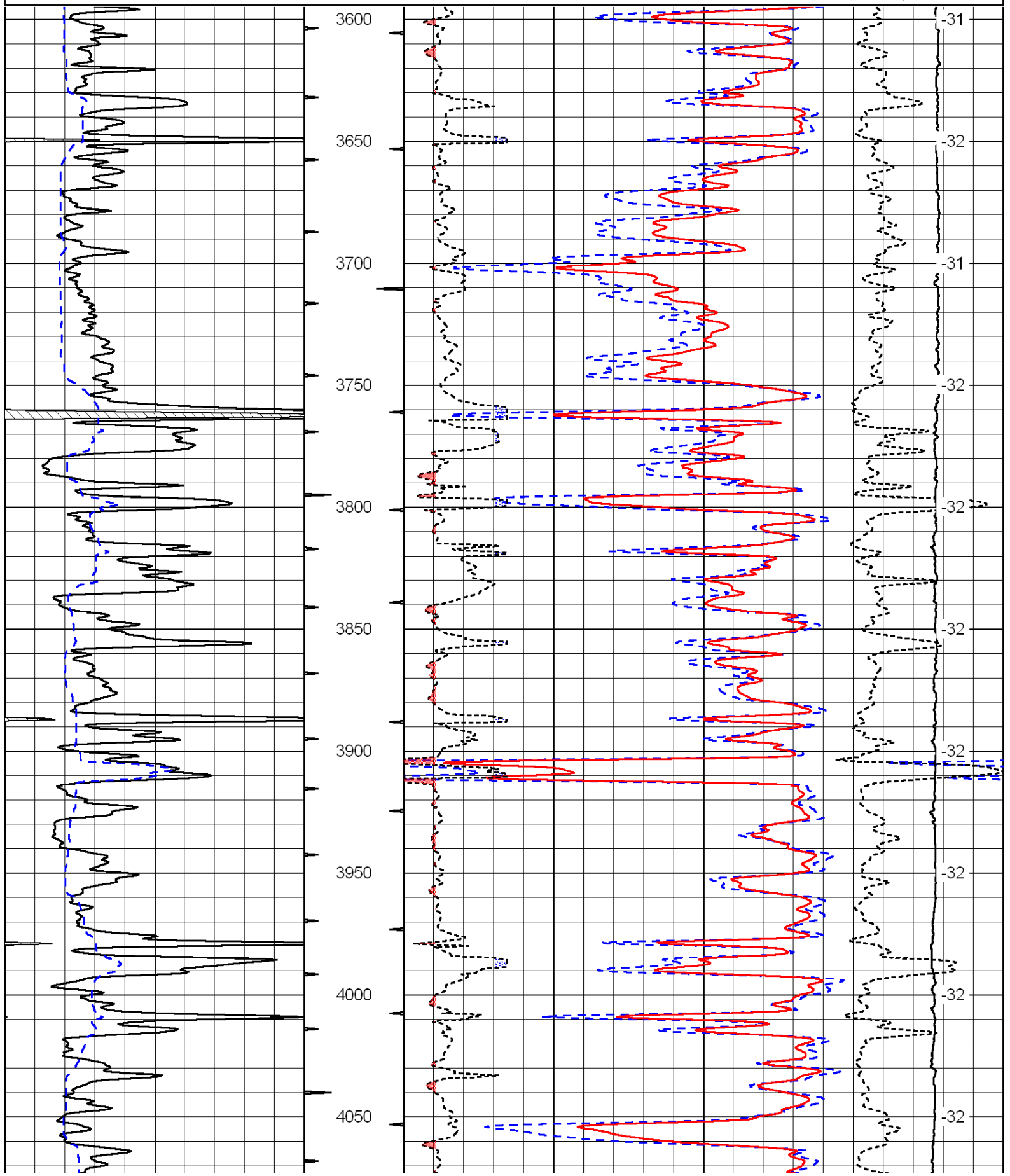
Thank you for using Log-Tech, Inc.
 (785) 625-3858

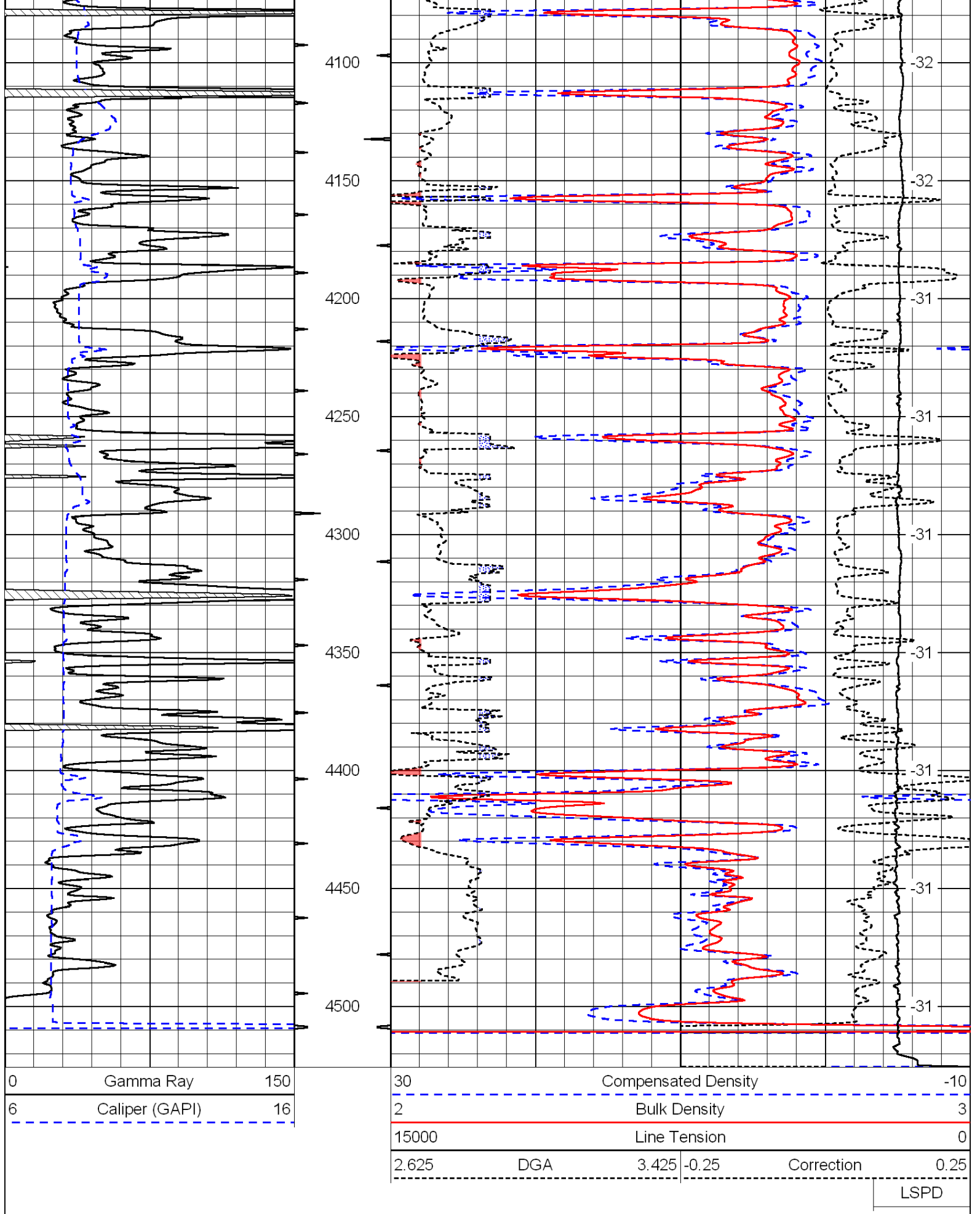
Ness City, Ks;
 13 South to X Rd;
 8.6 West; North Into

Database File: c:\warrior\data\amwar_borger no. 2-3\amwarhd.db
 Dataset Pathname: DIL\awstc
 Presentation Format: cdl
 Dataset Creation: Tue Nov 16 08:35:50 2010
 Charted by: Depth in Feet scaled 1:600

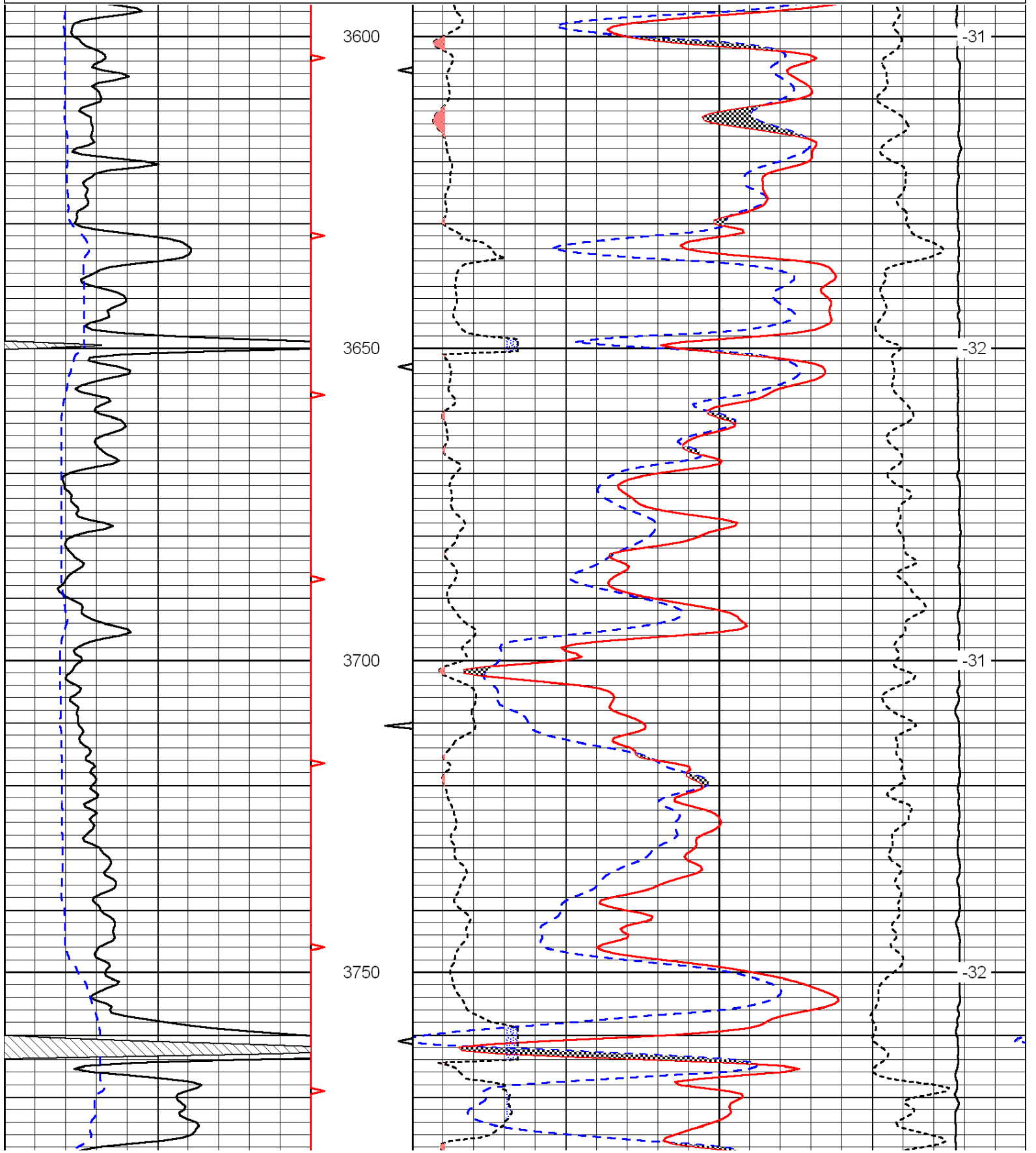
0	Gamma Ray	150
6	Caliper (GAPI)	16

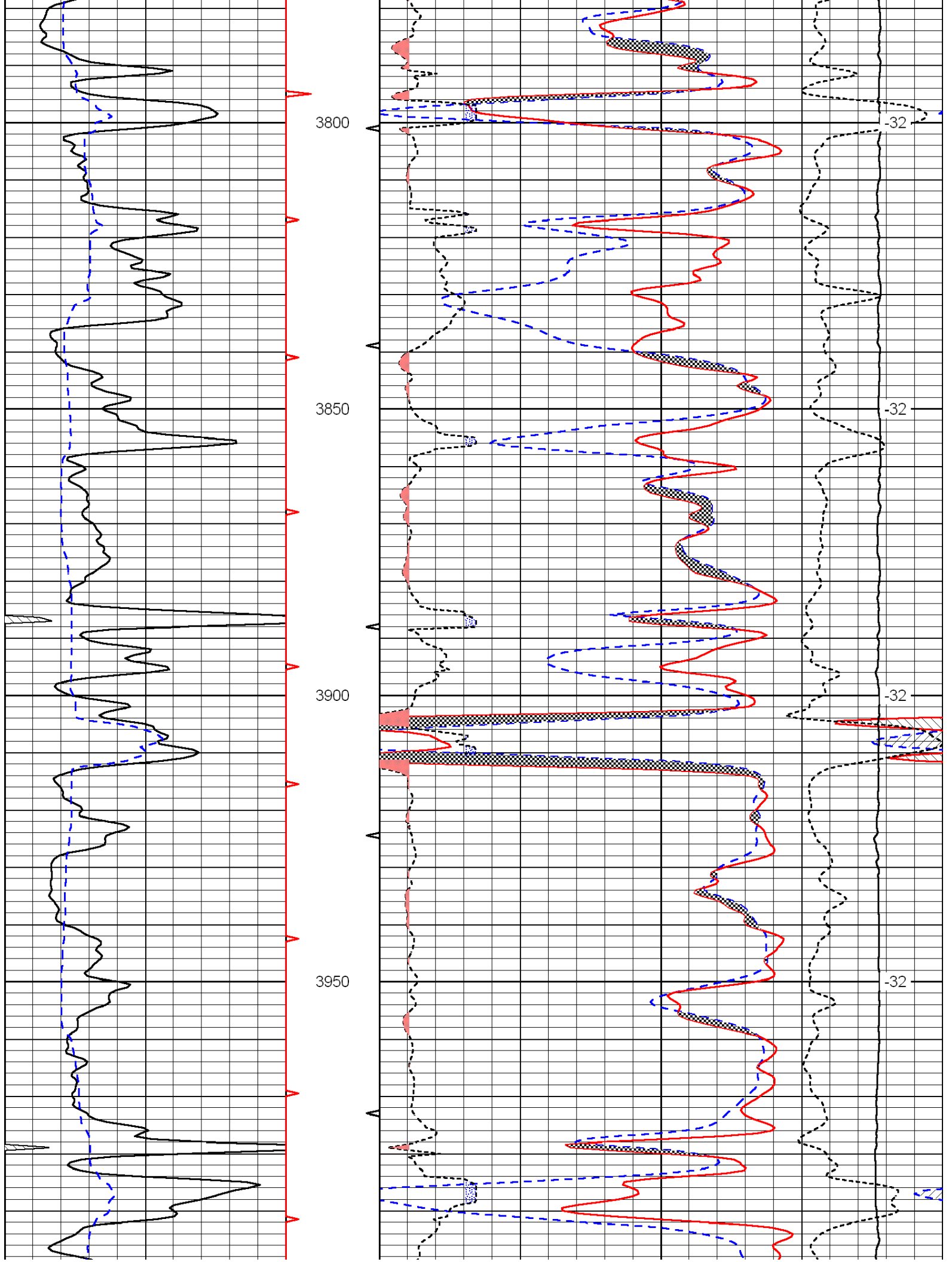
30	Compensated Density		-10
2	Bulk Density		3
15000	Line Tension		0
2.625	DGA	3.425	-0.25
			Correction
			0.25
LSPD			

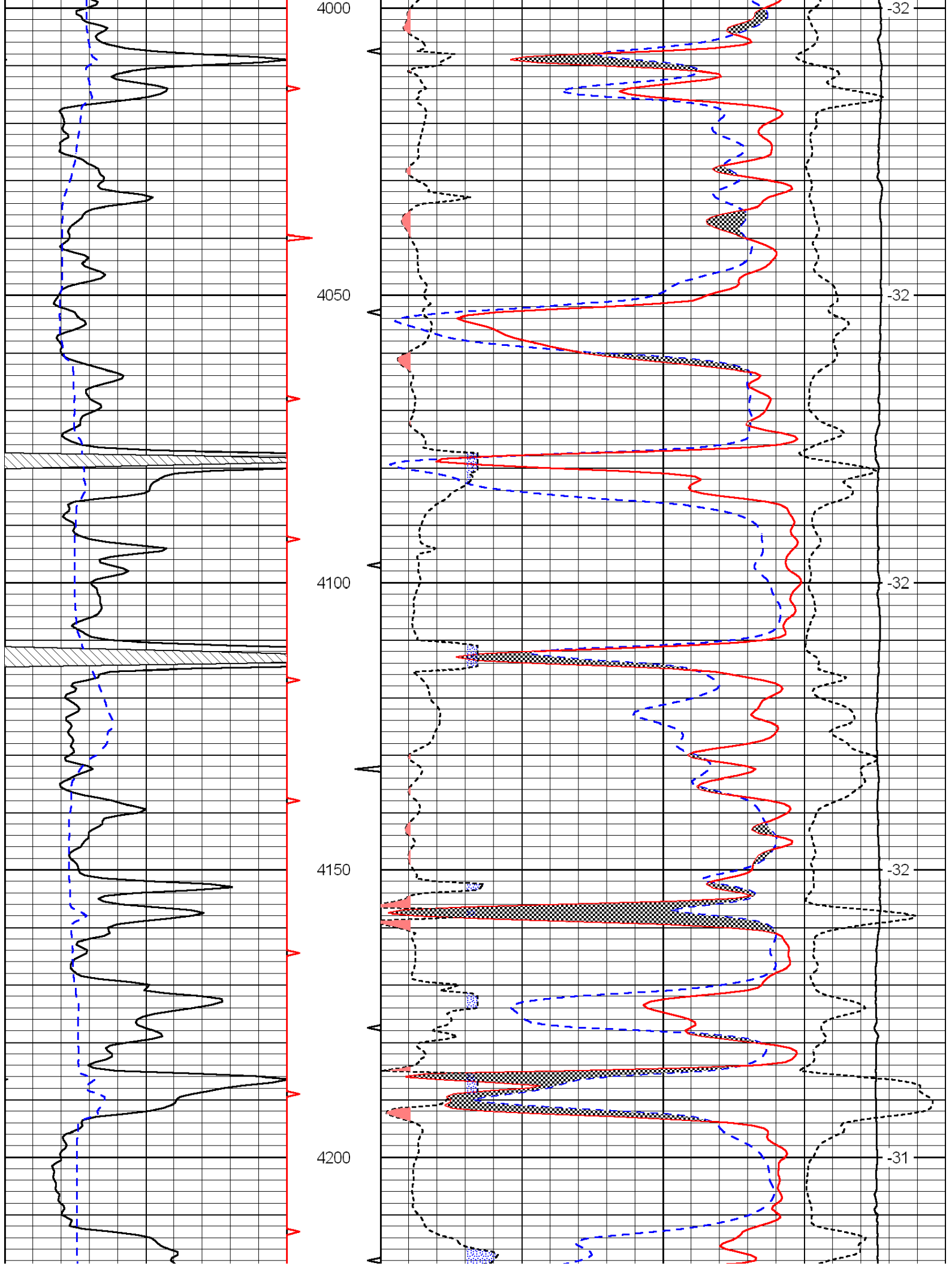


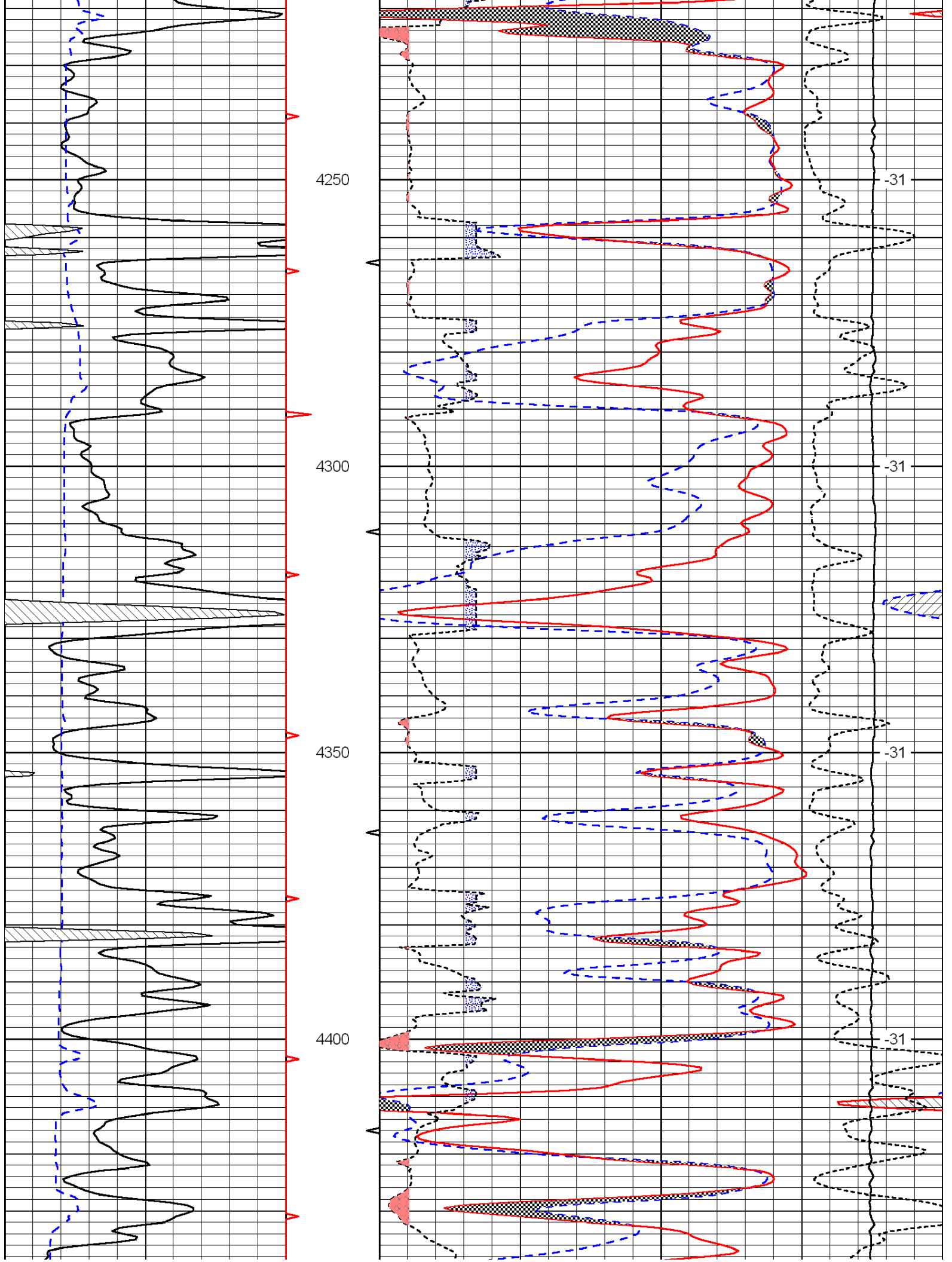


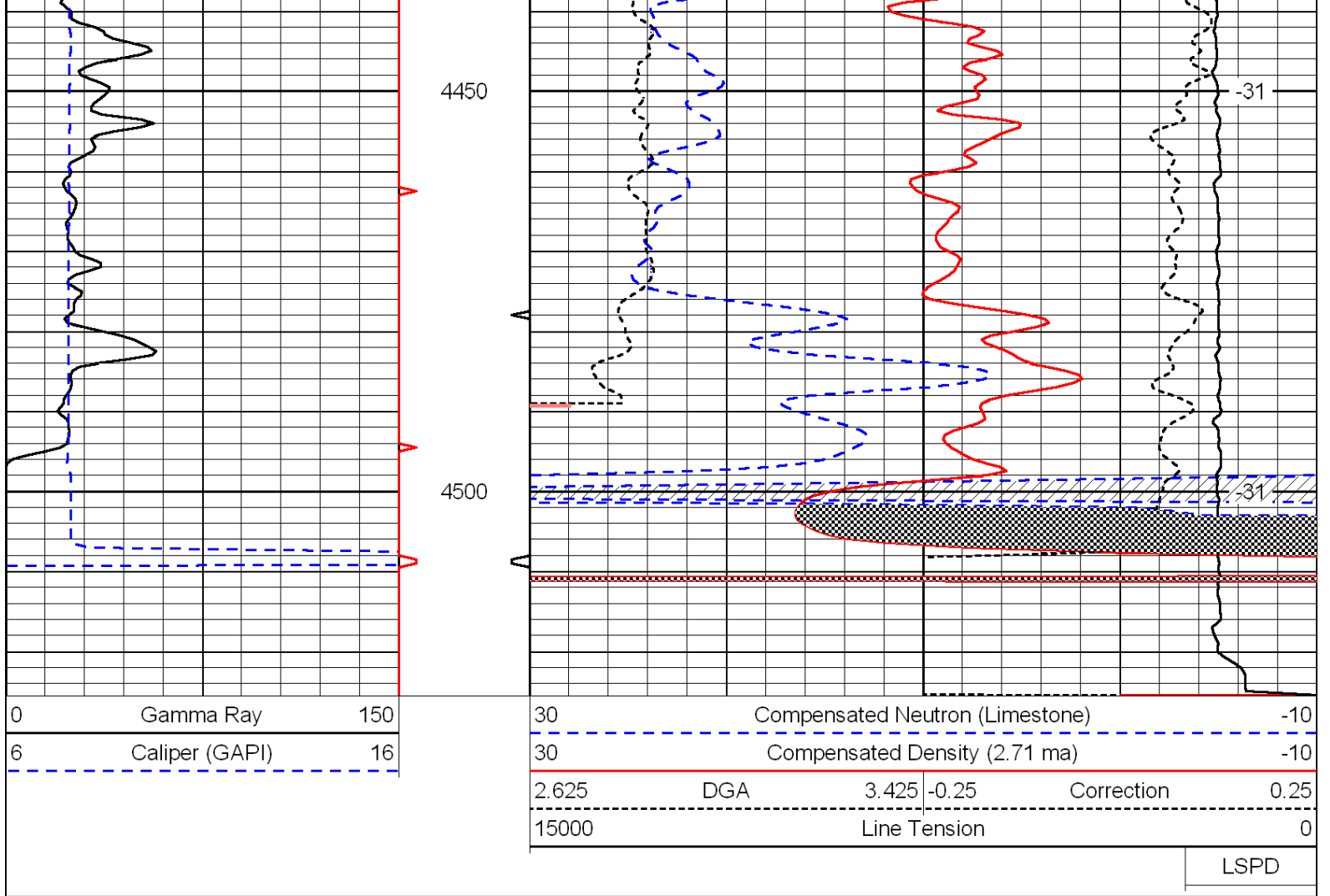
0	Gamma Ray	150	30	Compensated Neutron (Limestone)		-10
6	Caliper (GAPI)	16	30	Compensated Density (2.71 ma)		-10
			2.625	DGA	3.425	-0.25
			Correction		0.25	
			15000	Line Tension		0
						LSPD











LSPD