



**DIGITAL LOG** (785) 625-3858

**Borehole Compensated  
Sonic Log**

API No. 15-051-26,027-00-00

Company **Meridian Energy Inc.**  
Well **Triumph Trust No. 1**  
Field **Fort Hays State College**  
County **Ellis** State **Kansas**

Location **330' FNL & 2100' FEL**

Sec: **2** Twp: **14S** Rge: **19W**

Other Services  
DIL  
CNL/CDL

Permanent Datum **Ground Level** Elevation **2155**  
Log Measured From **Kelly Bushing** **8** Ft. Above Perm. Datum  
Drilling Measured From **Kelly Bushing**

K.B. 2163  
D.F. G.L. 2155

Date **10/25/2010**

Run Number **Two**

Type Log **BHC Sonic**

Depth Driller **3860**

Depth Logger **3867**

Bottom Logged Interval **3856**

Top Logged Interval **200**

Type Fluid In Hole **Chemical**

Salinity, PPM CL **6,100**

Density **8.8**

Level **Full**

Max. Rec. Temp. F **117**

Operating Rig Time **4 Hours**

Equipment -- Location **17 Hays**

Recorded By **Mike Garrison**

Witnessed By **Neal LaFon**

Borehole Record				Casing Record			
Run No.	Bit	From	To	Size	Wgt.	From	To
1	12.25	00	221	8.625	24#	00	221
2	7.875	221	3860				

<<< Fold Here >>>

All interpretations are opinions based on inferences from electrical or other measurements and we cannot and do not guarantee the accuracy or correctness of any interpretation, and we shall not, except in the case of gross or willful negligence on our part, be liable or responsible for any loss, costs, damages, or expenses incurred or sustained by anyone resulting from any interpretation made by any of our officers, agents or employees. These interpretations are also subject to our general terms and conditions set out in our current Price Schedule.

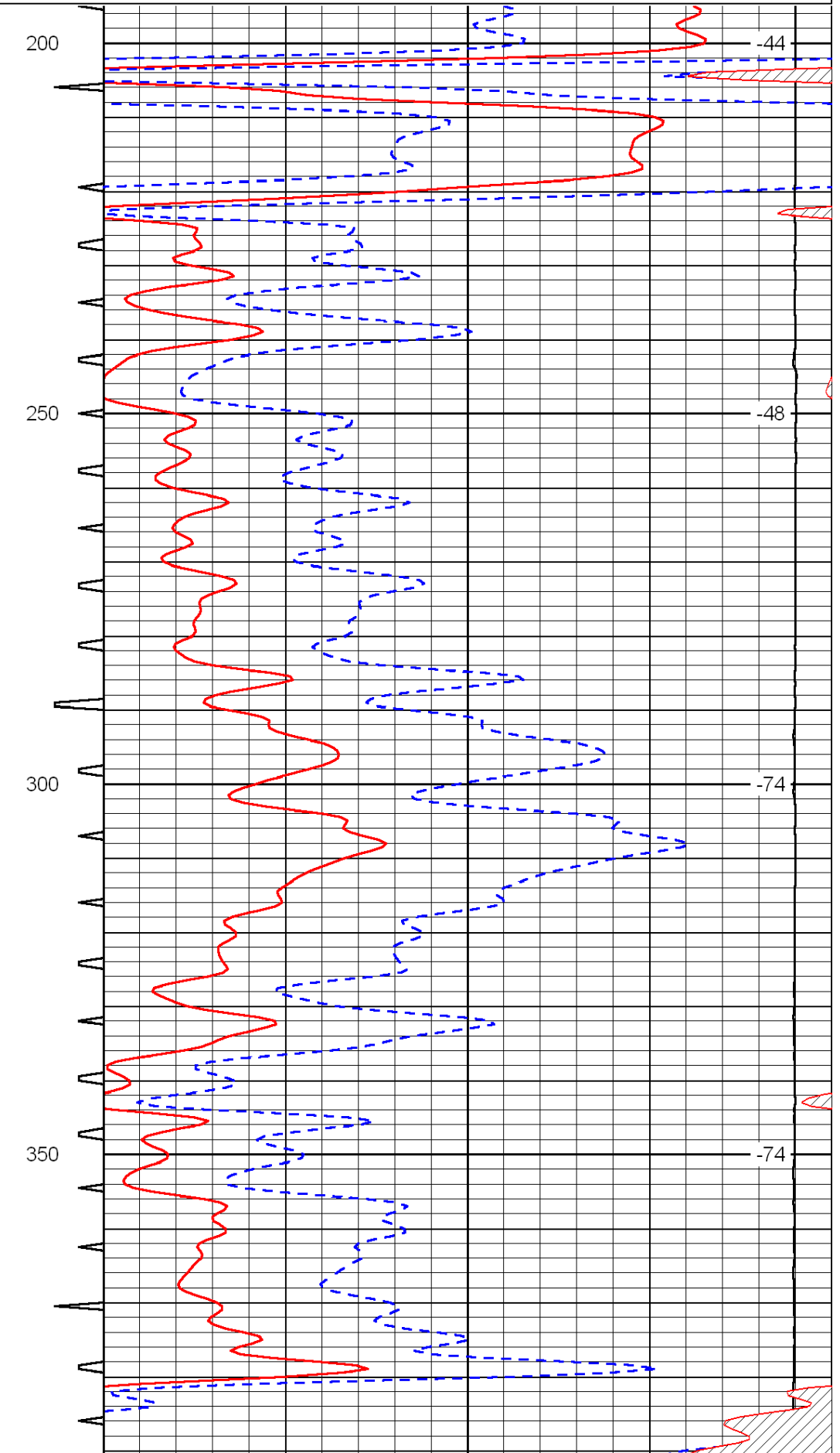
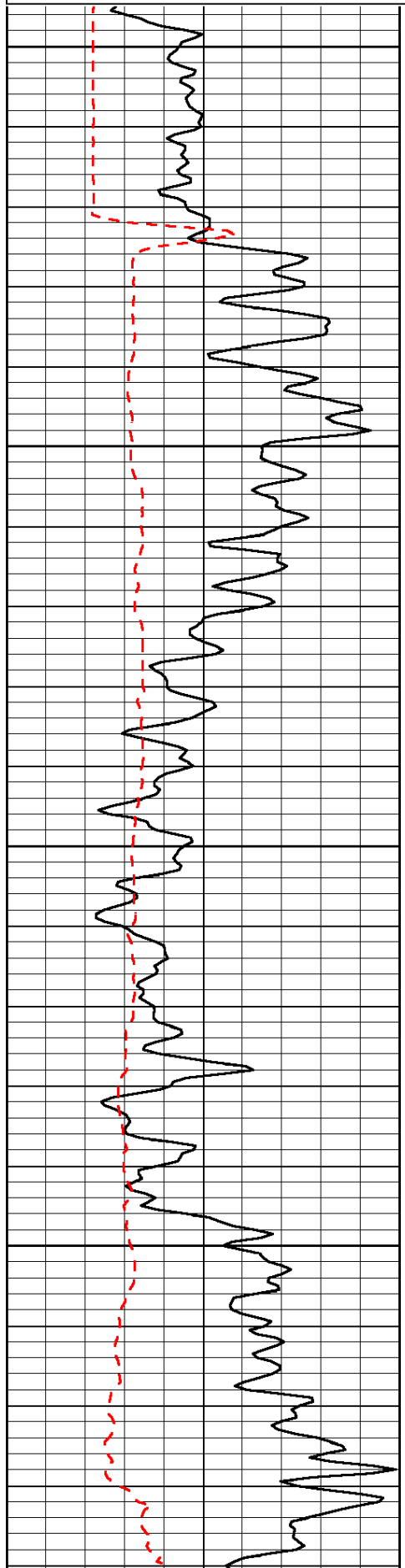
**Comments**

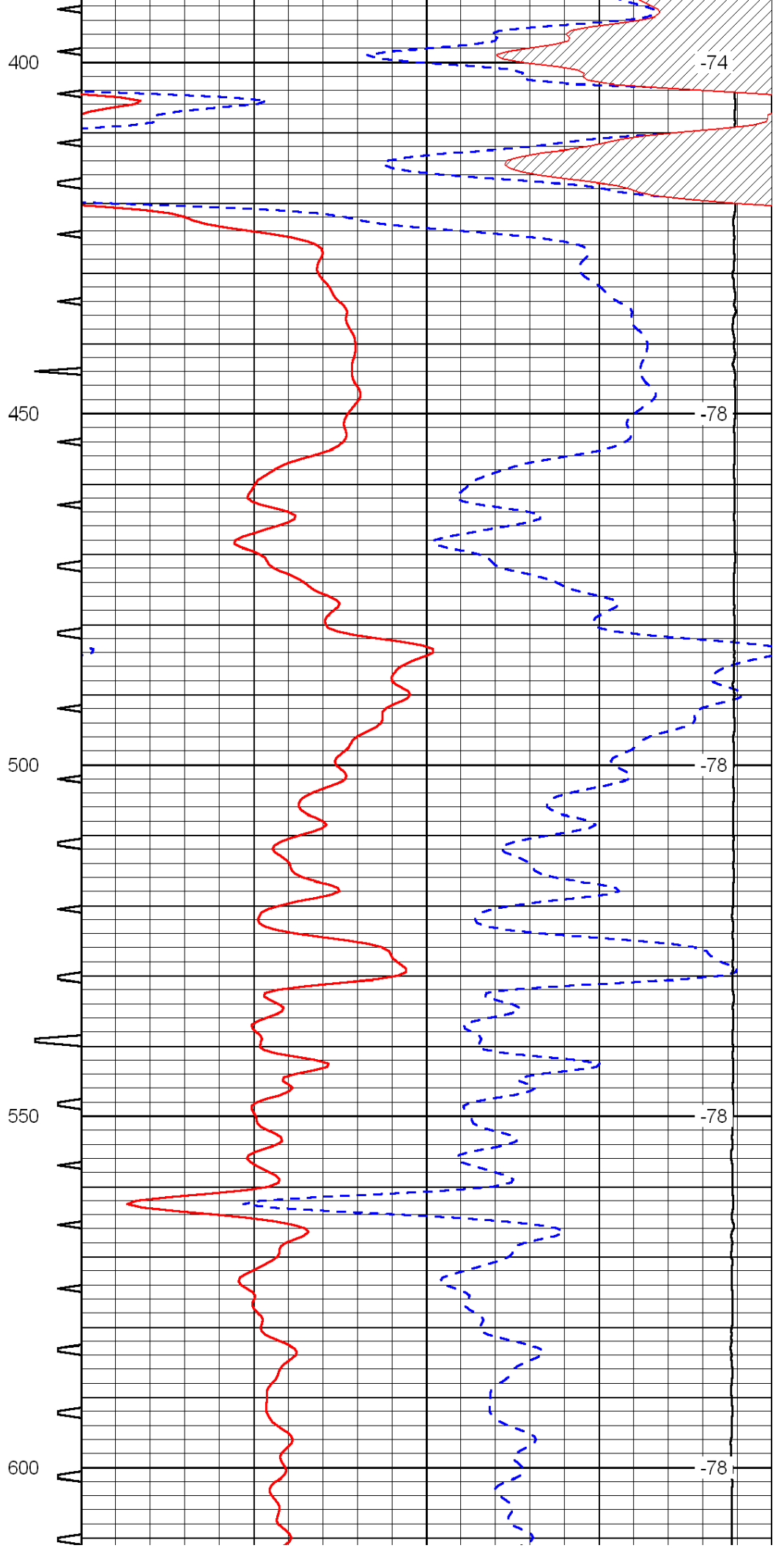
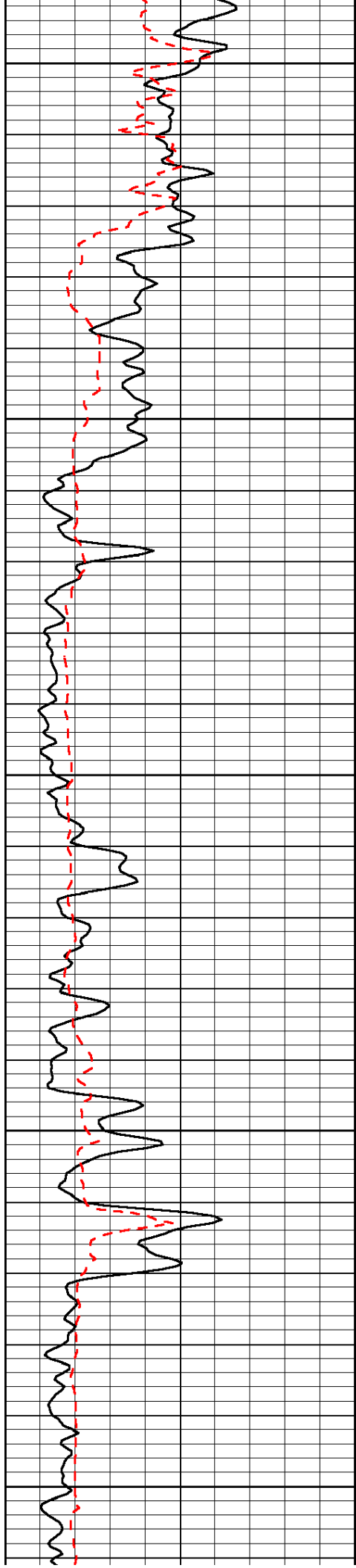
Thank you for using Log-Tech, Inc.  
(785) 625-3858

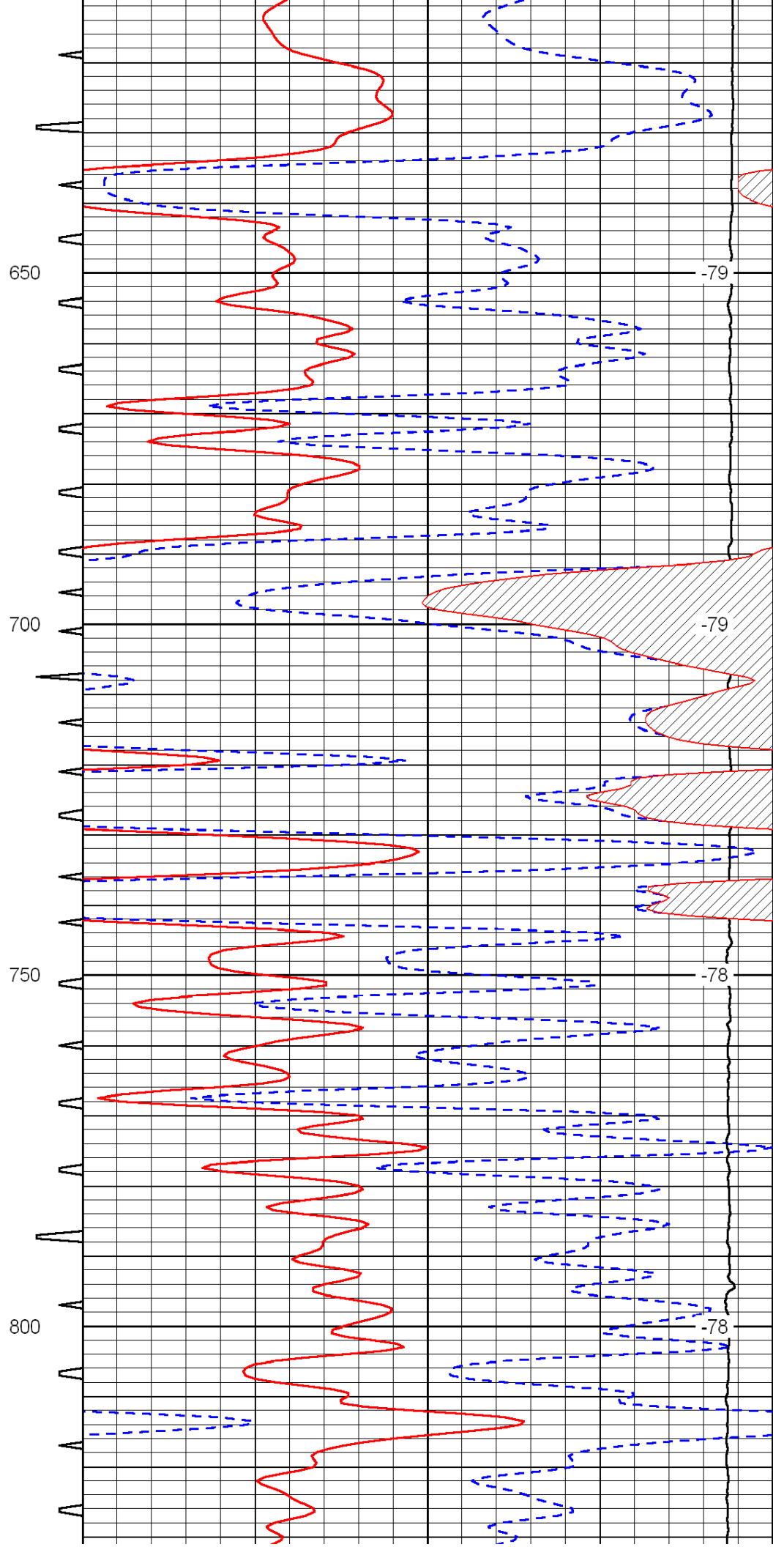
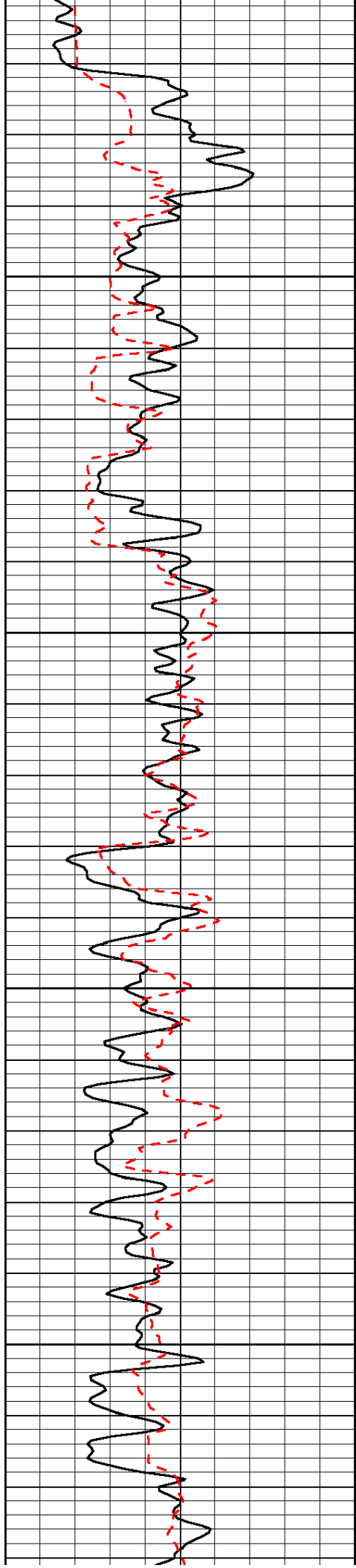
Hays, 3 West on Golf Course Rd, 1/2 North, Northwest Into

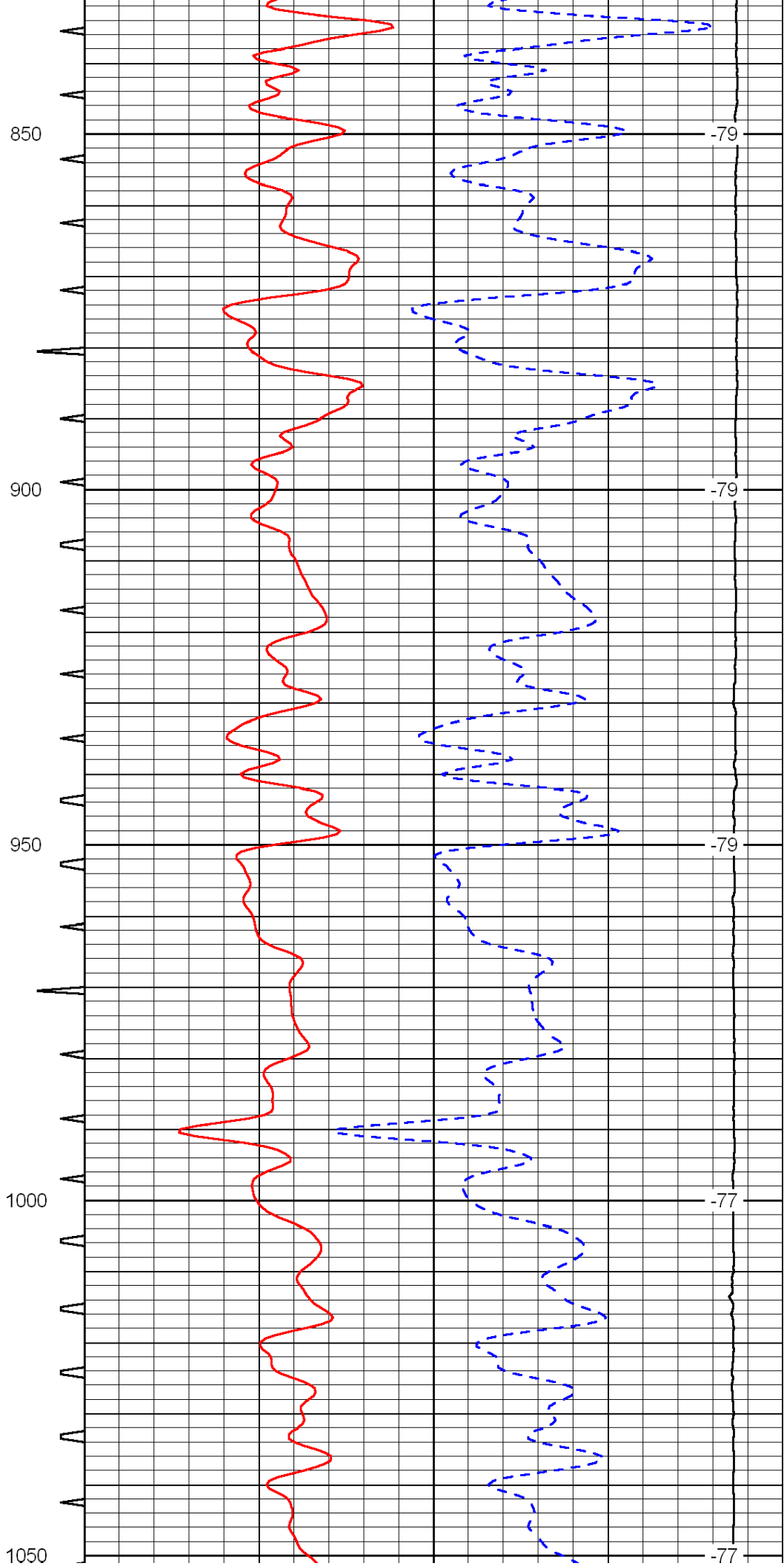
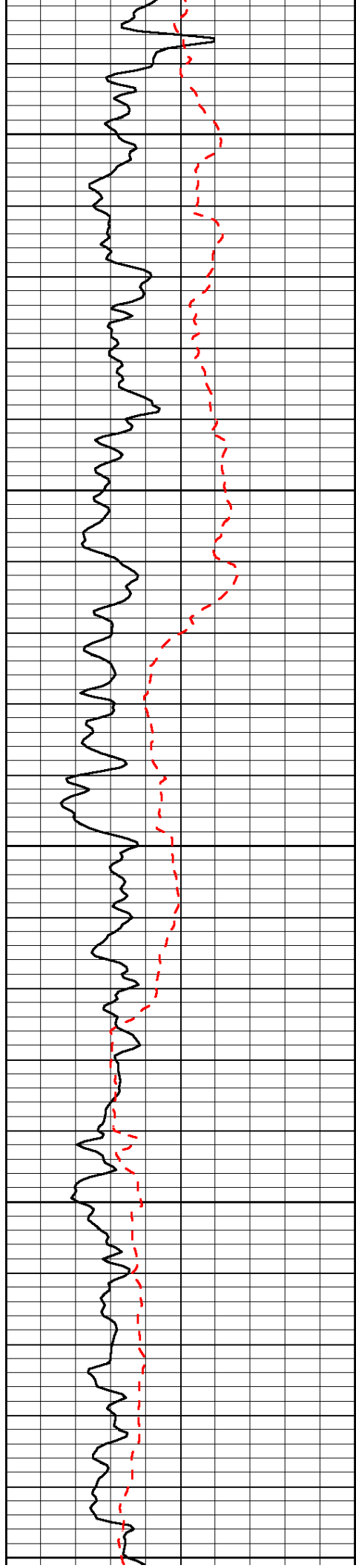
0	Gamma Ray	150	Sonic Int	140	Delta Time (usec/ft)	40
150	Gamma Ray	300	5	0	SPOR	-10
6	Caliper (GAPI)	16		15000	LTEN (lb)	0

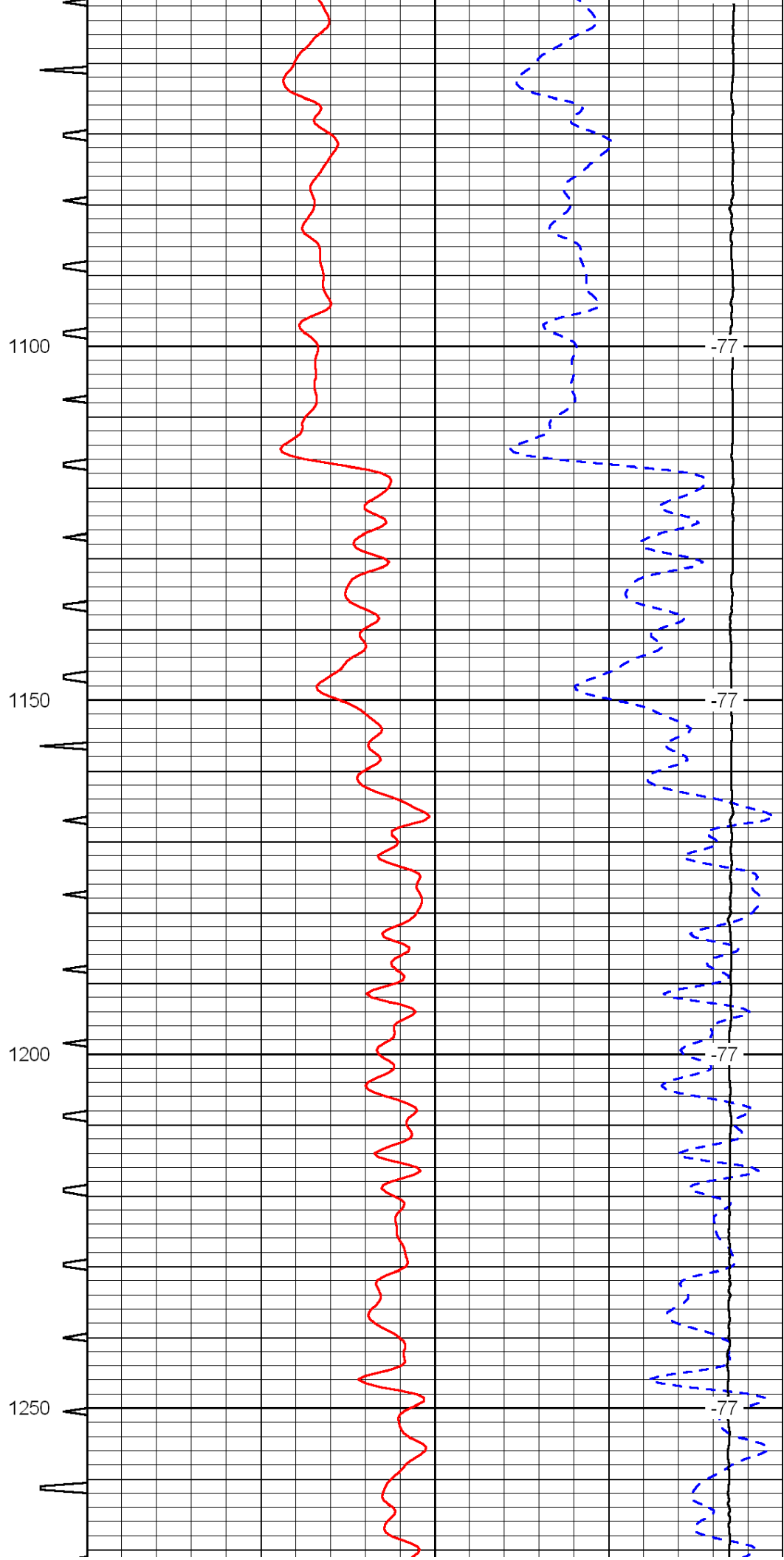
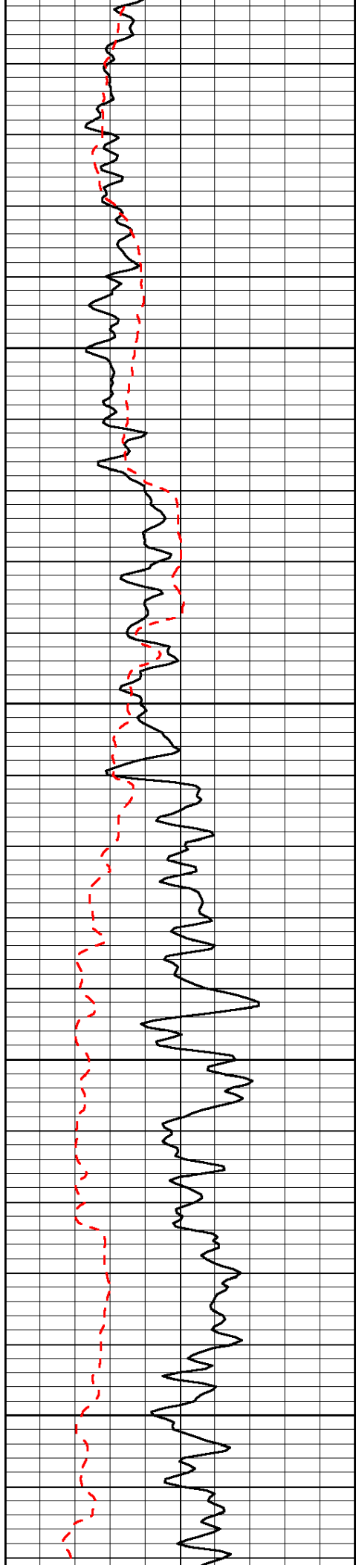
LSPD

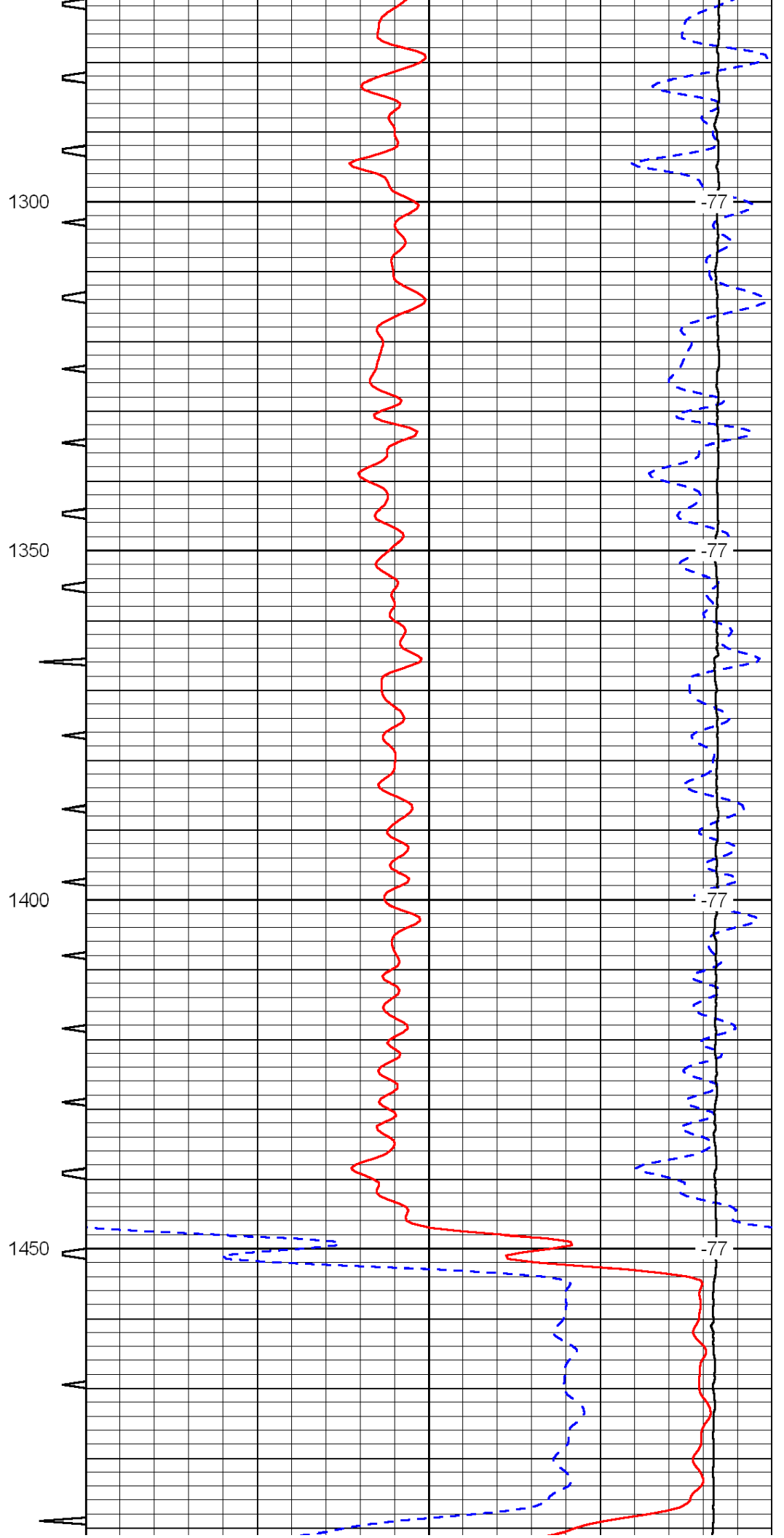
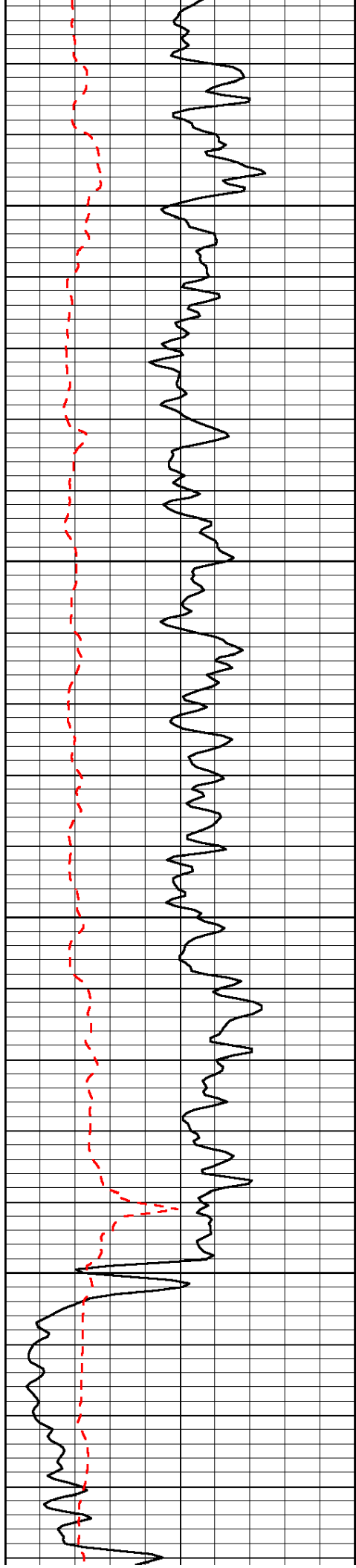


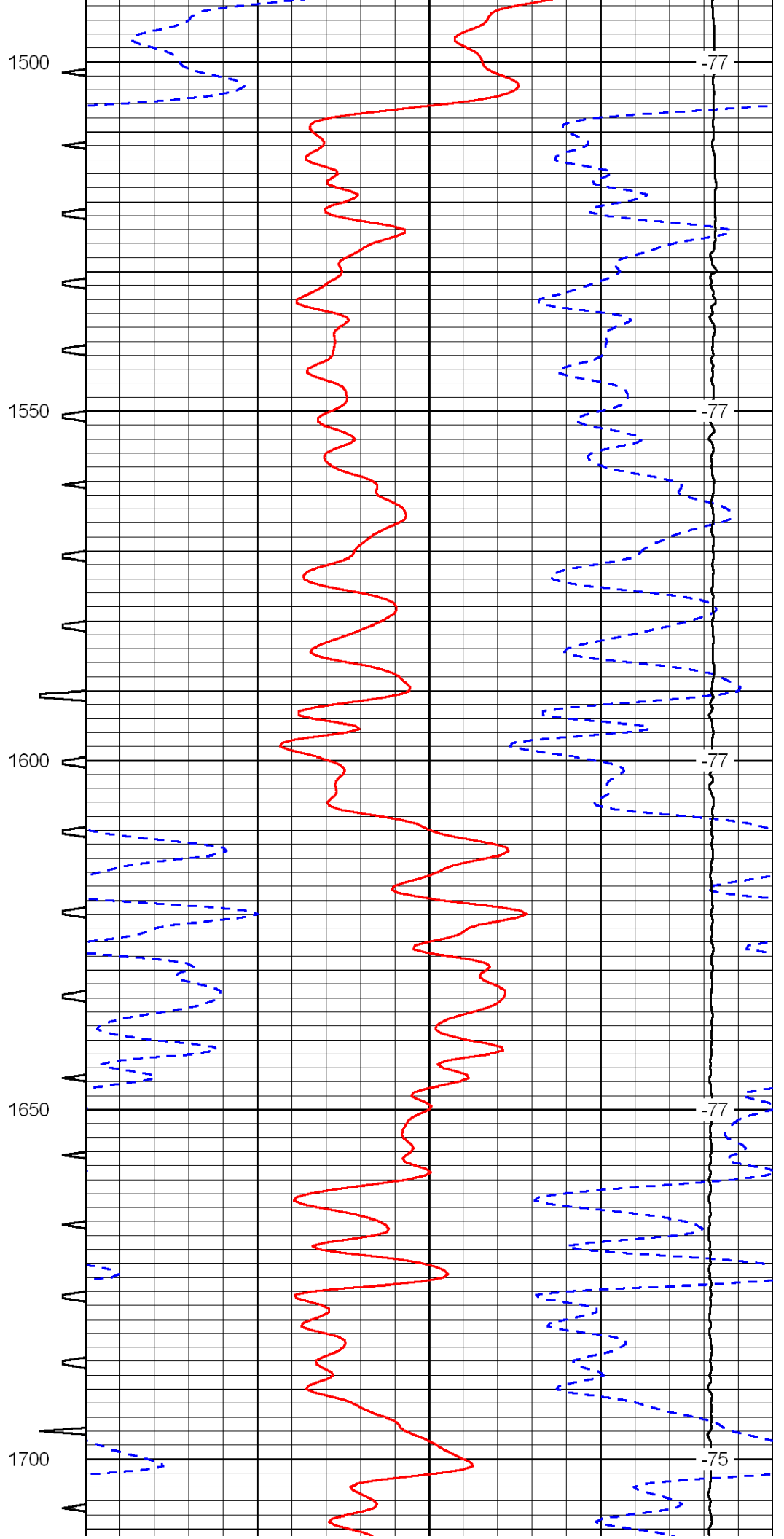
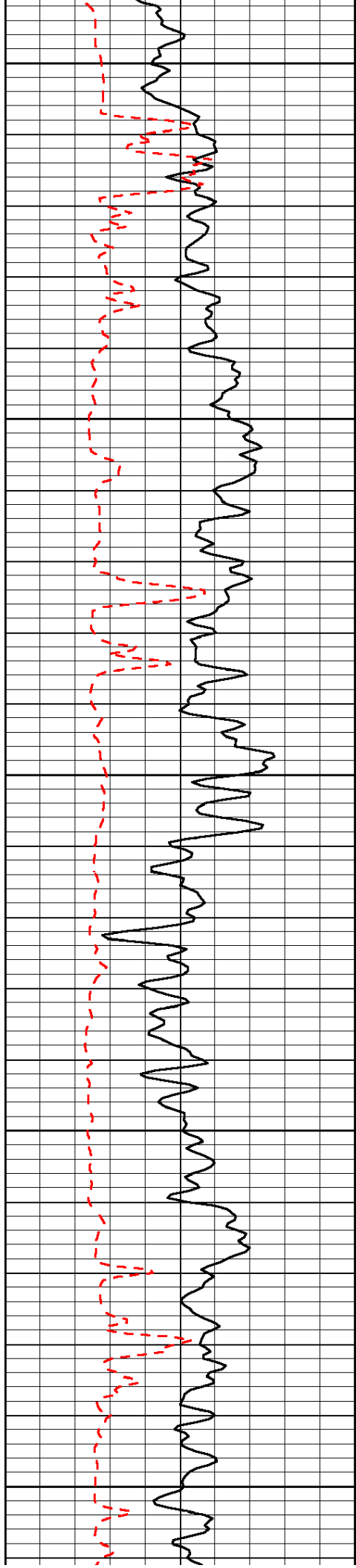


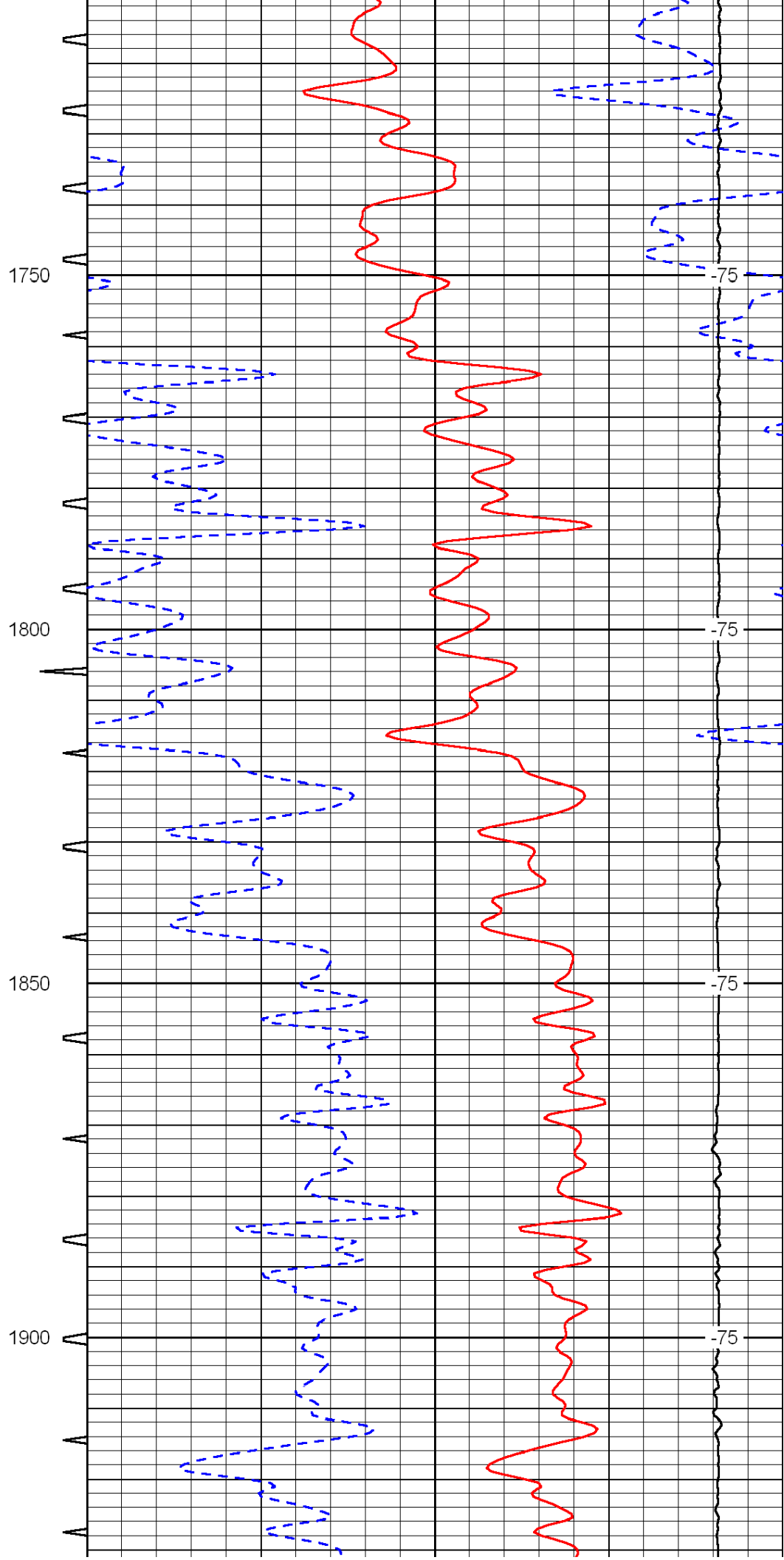
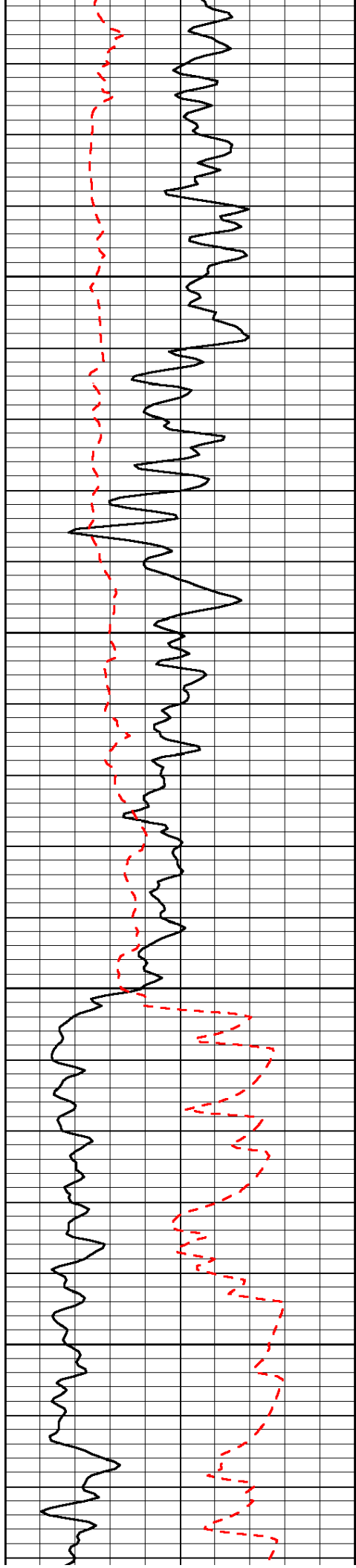


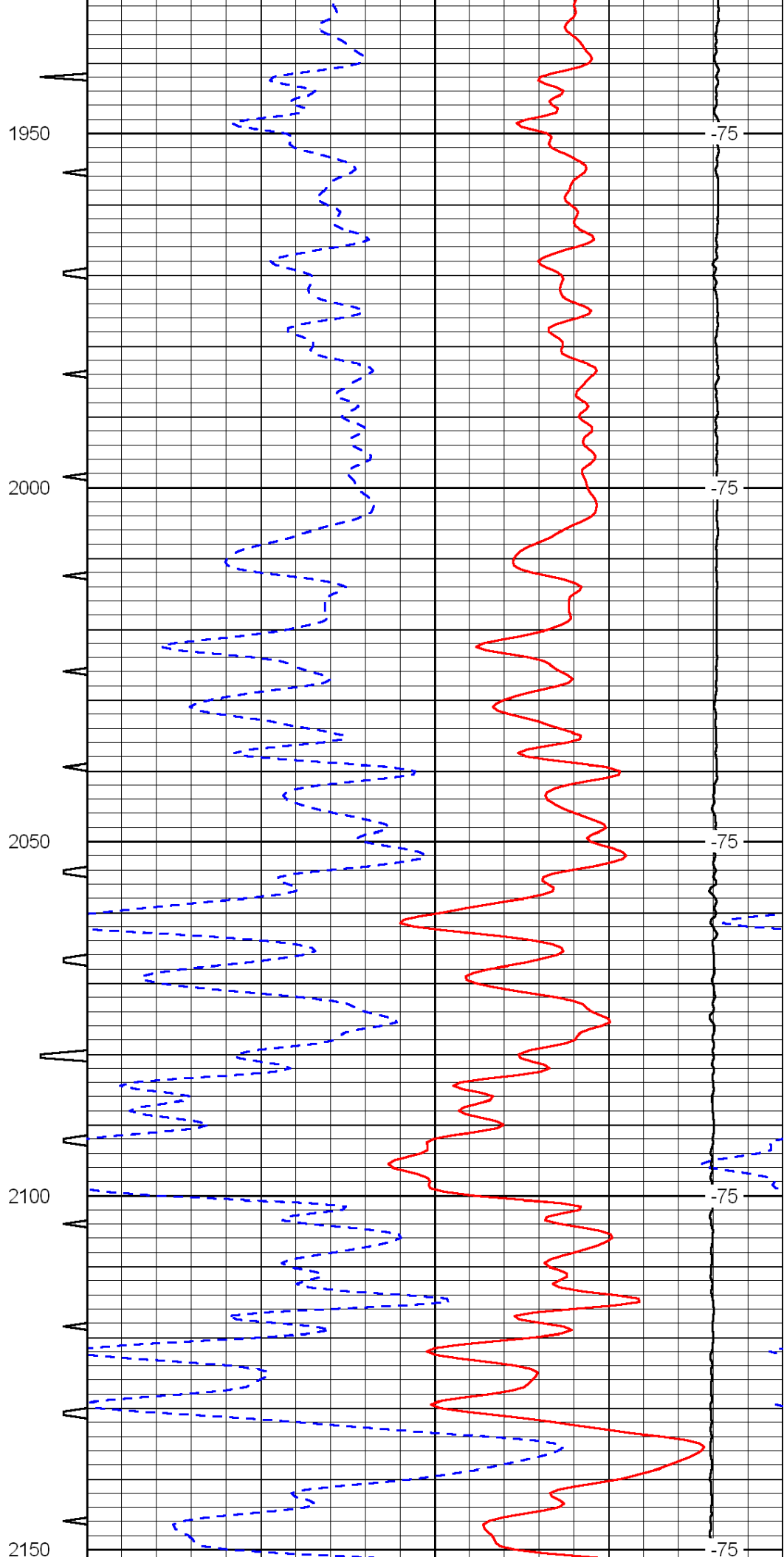
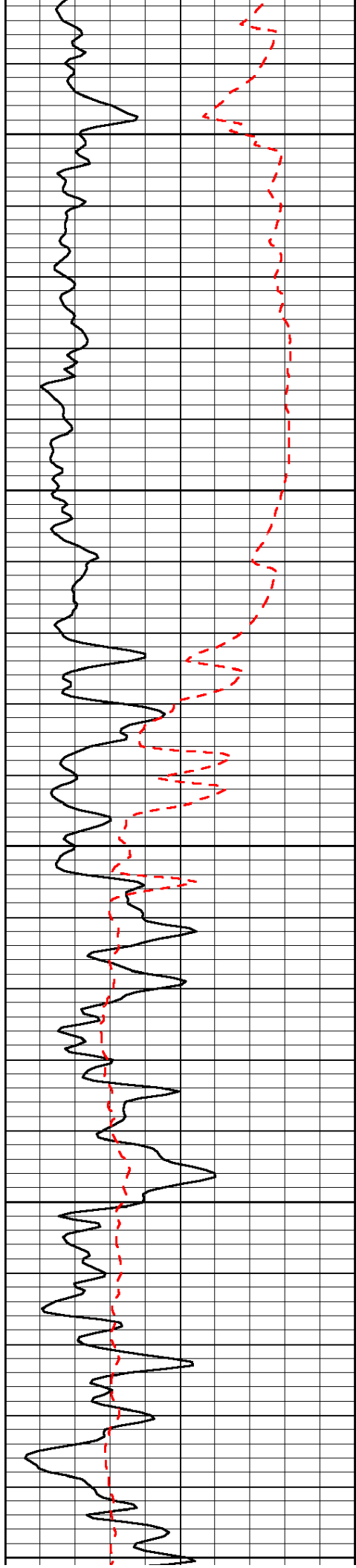


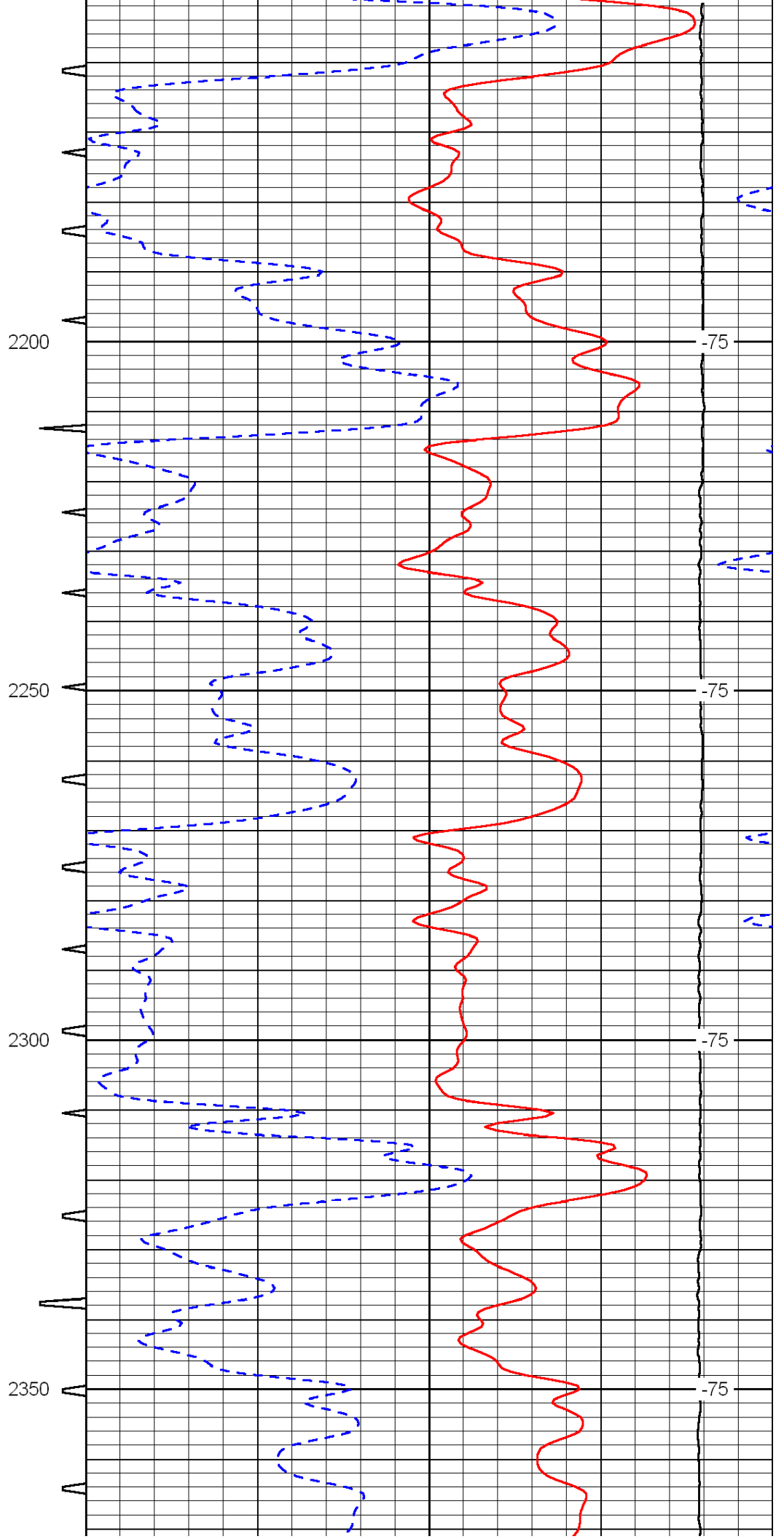
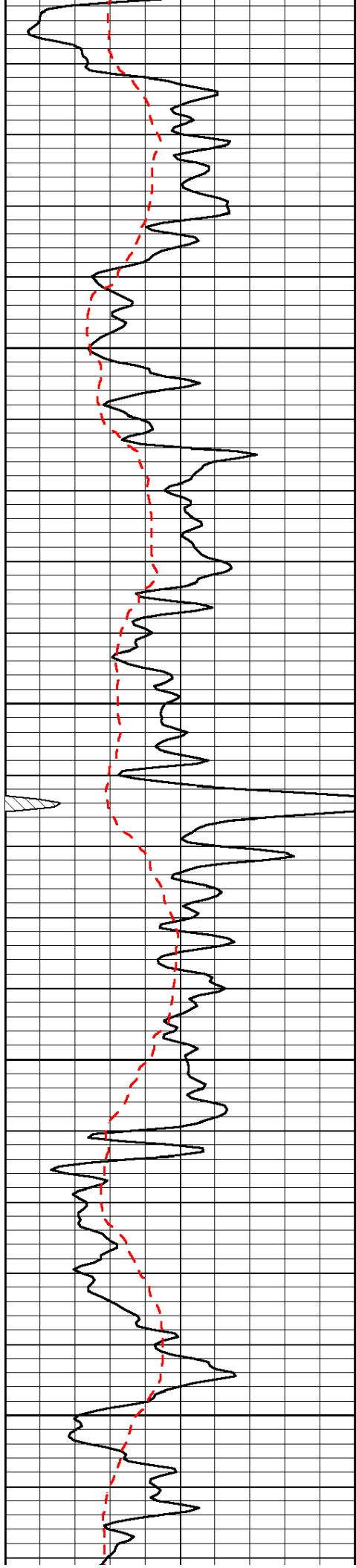


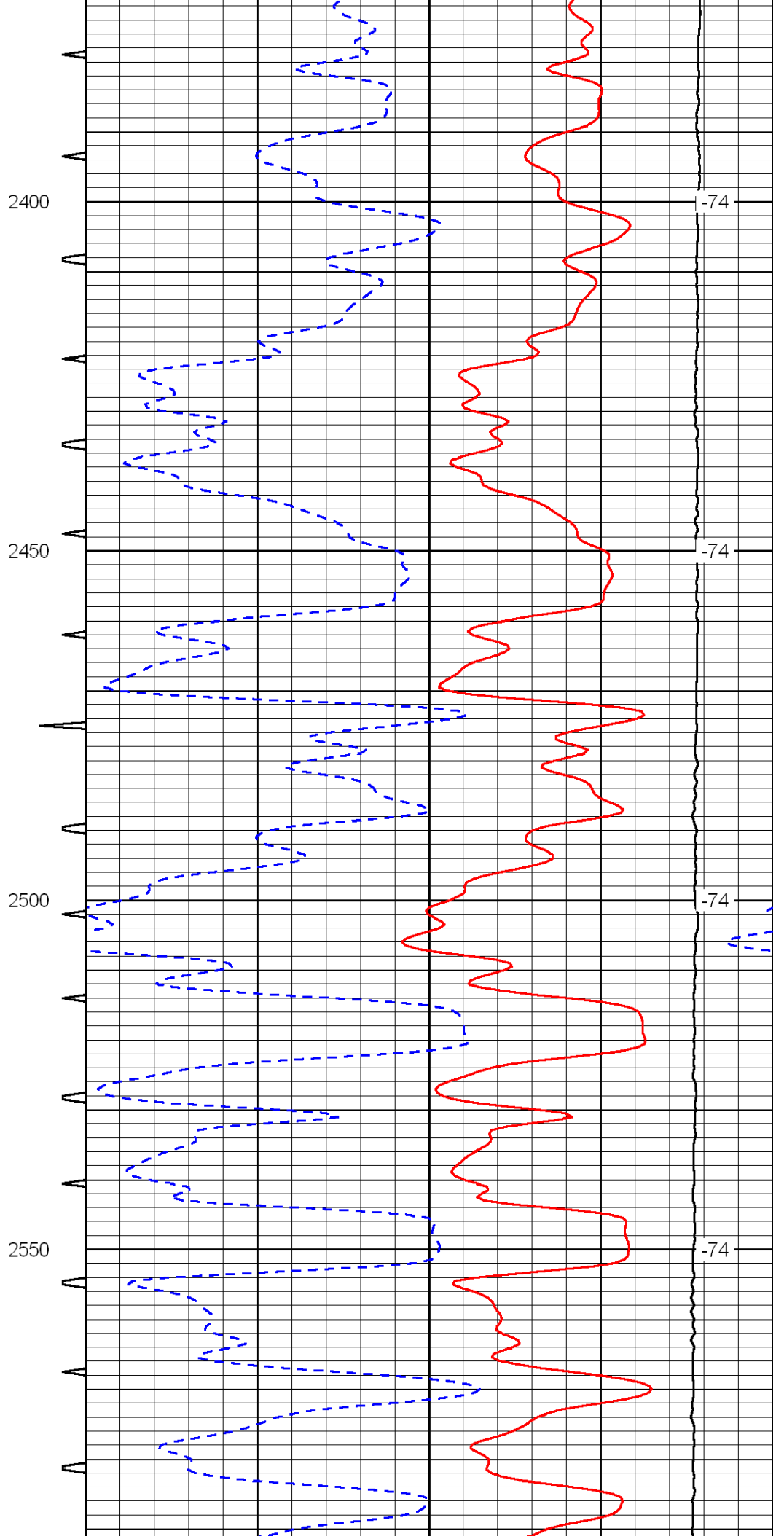
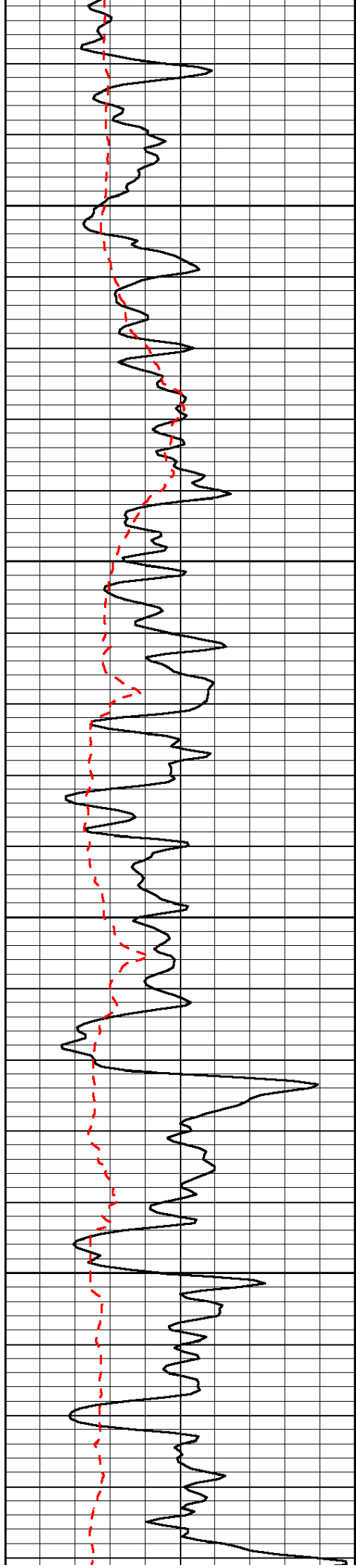


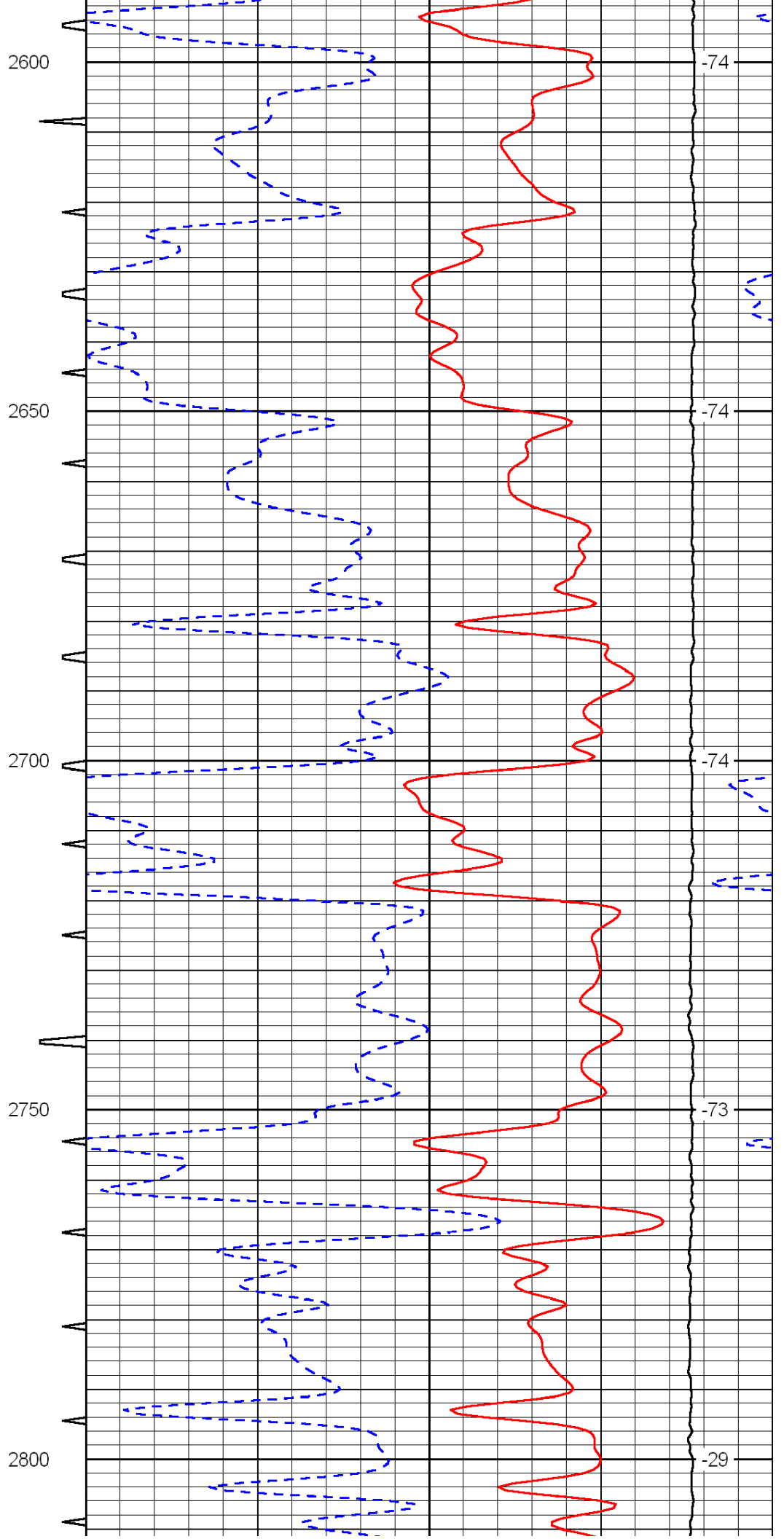
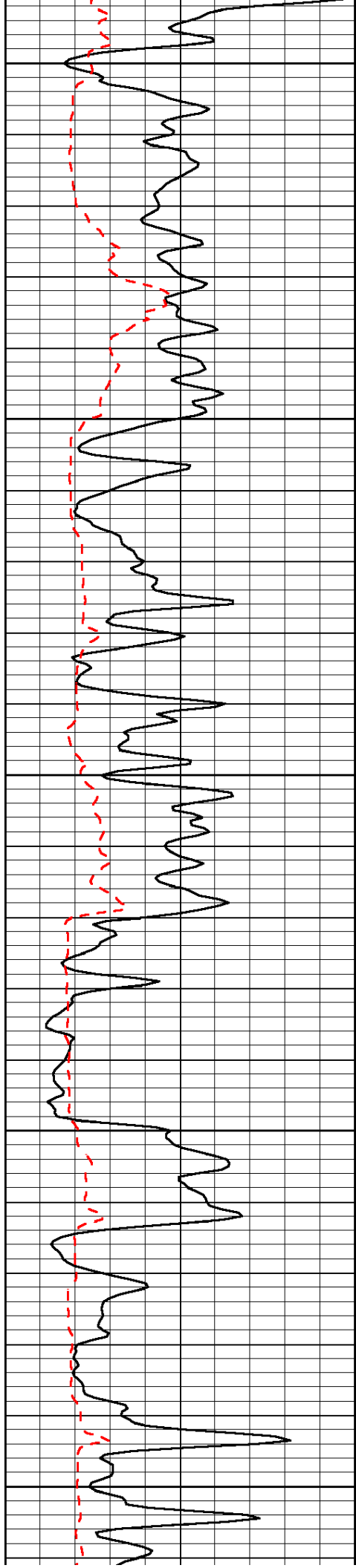


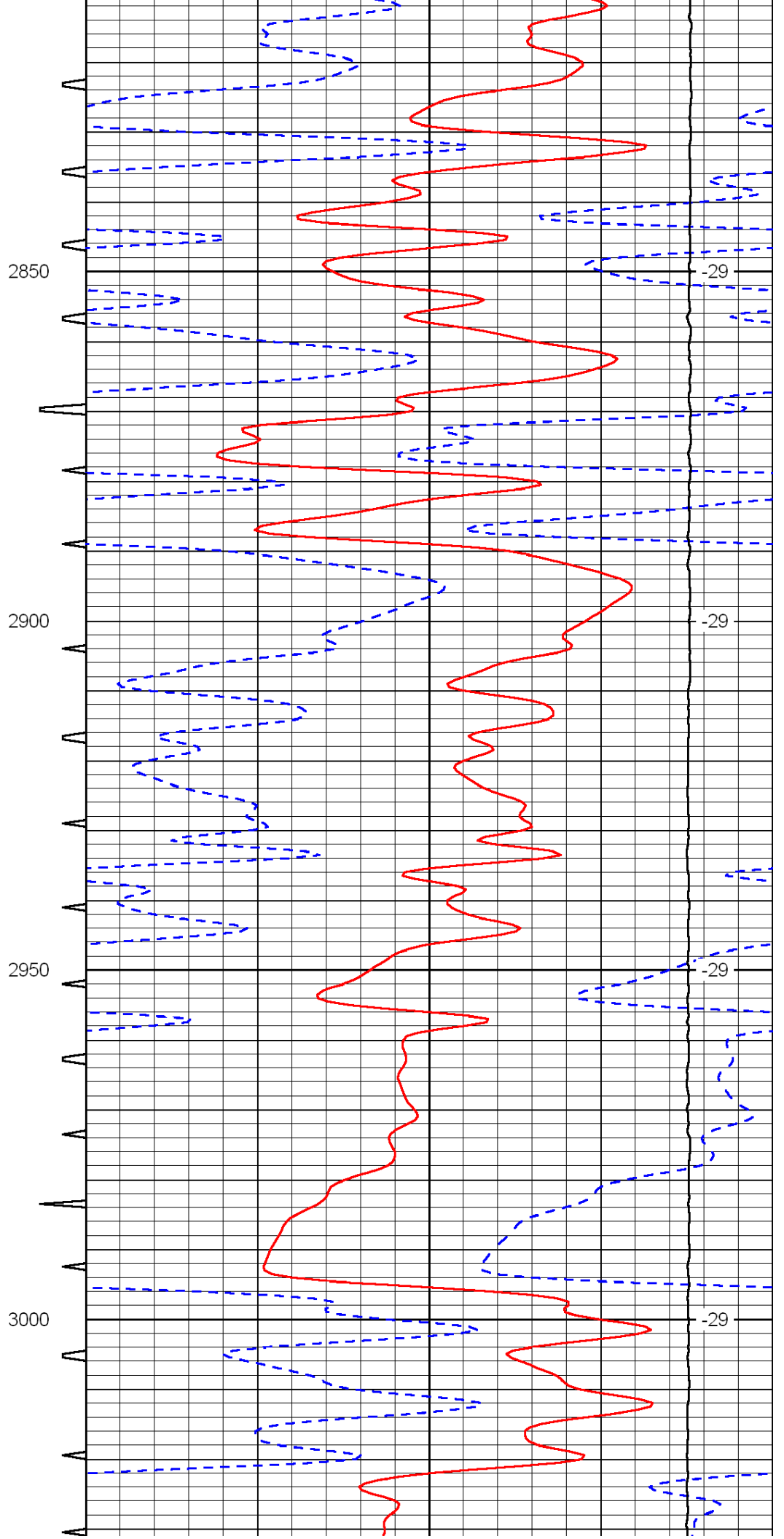
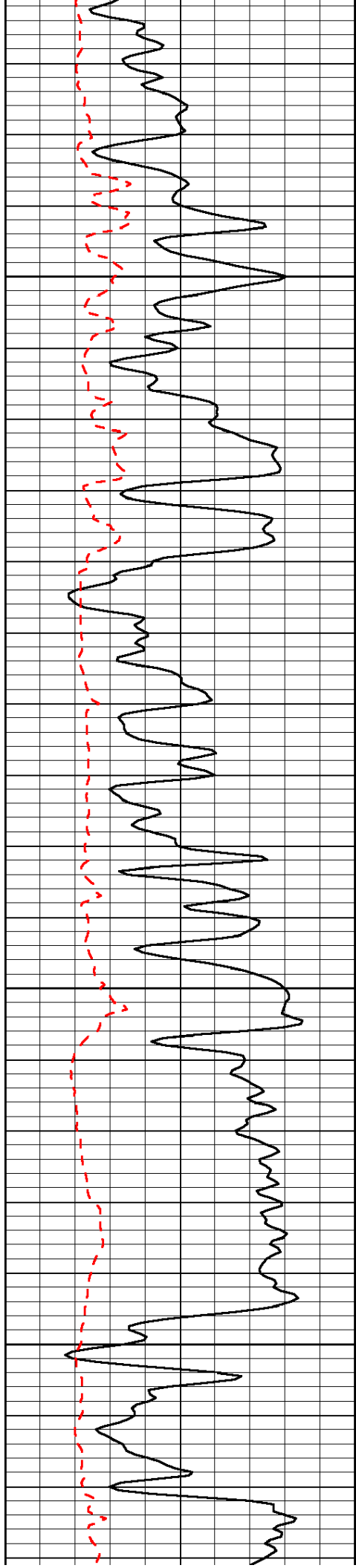


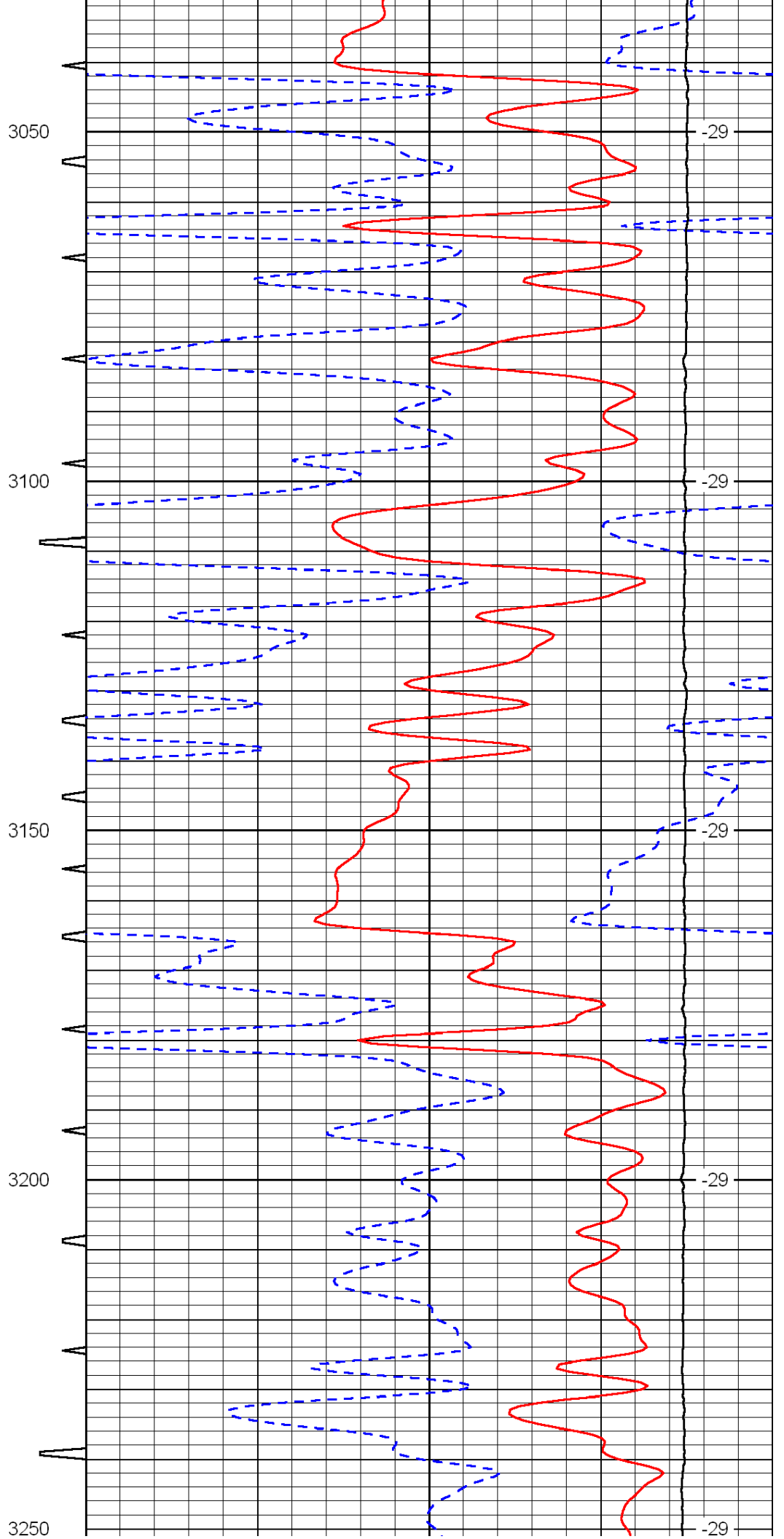
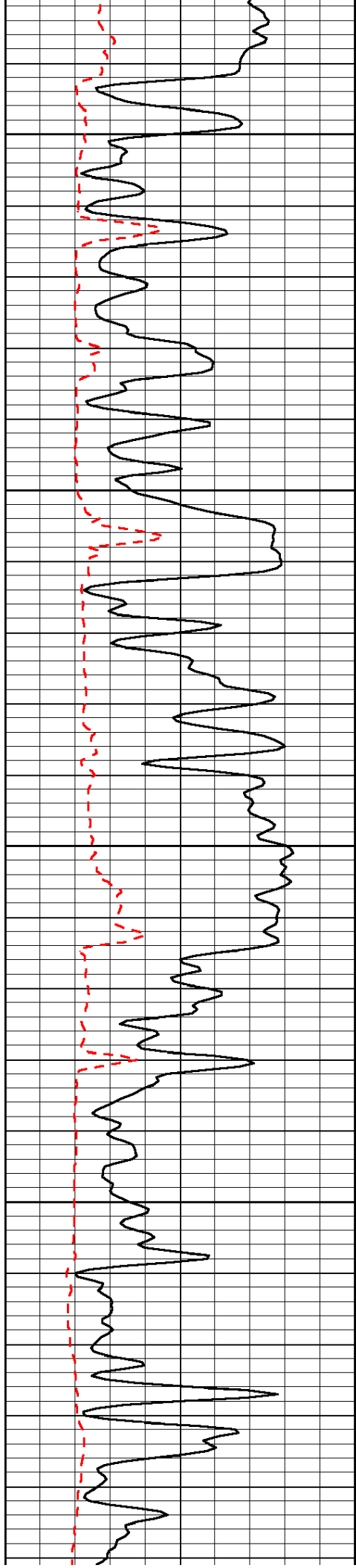


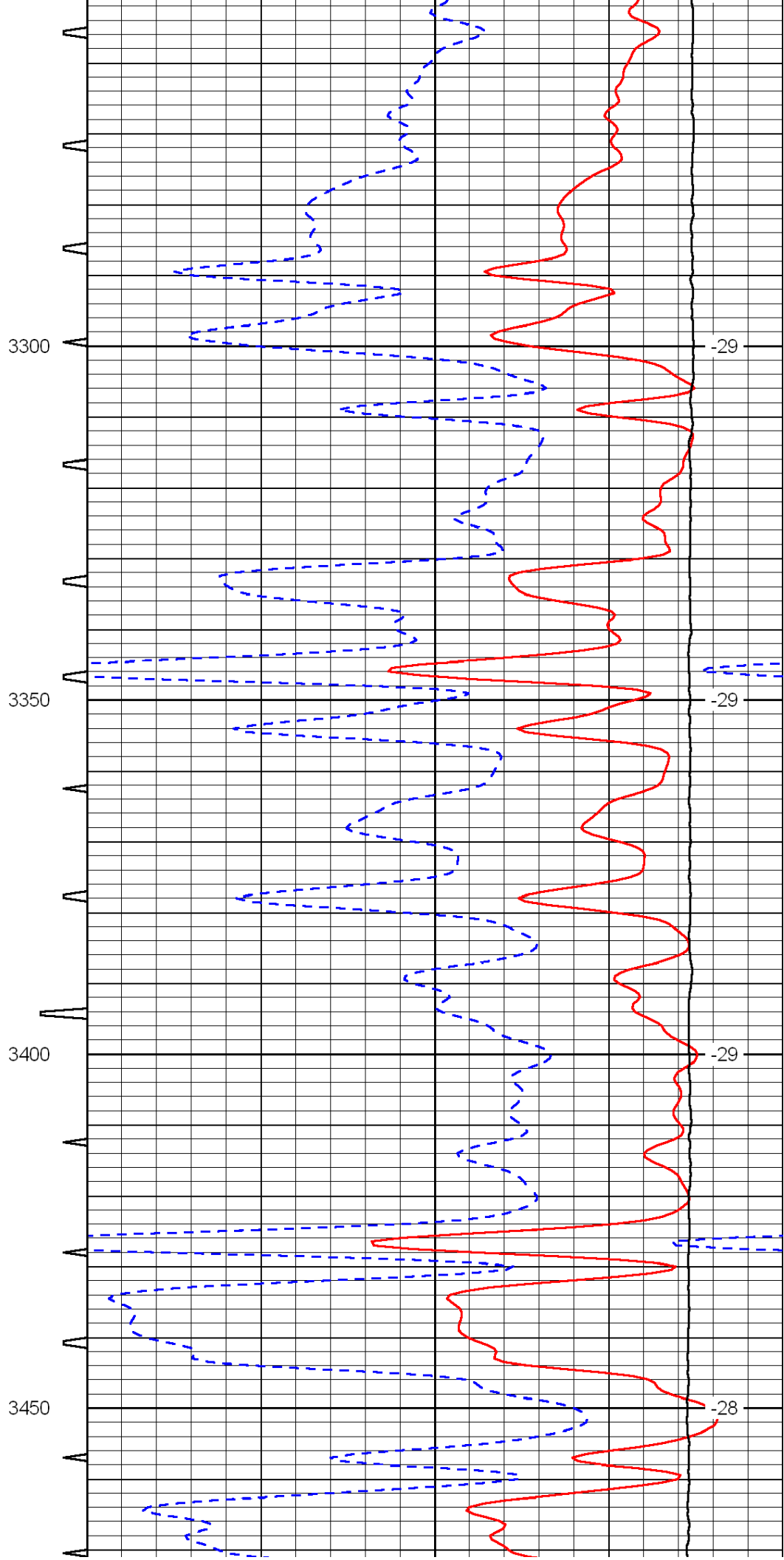
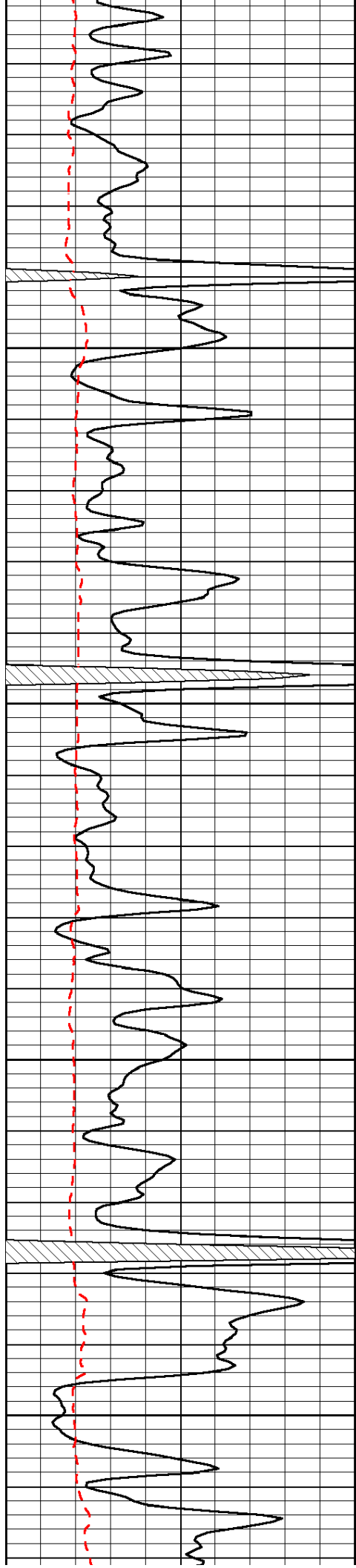


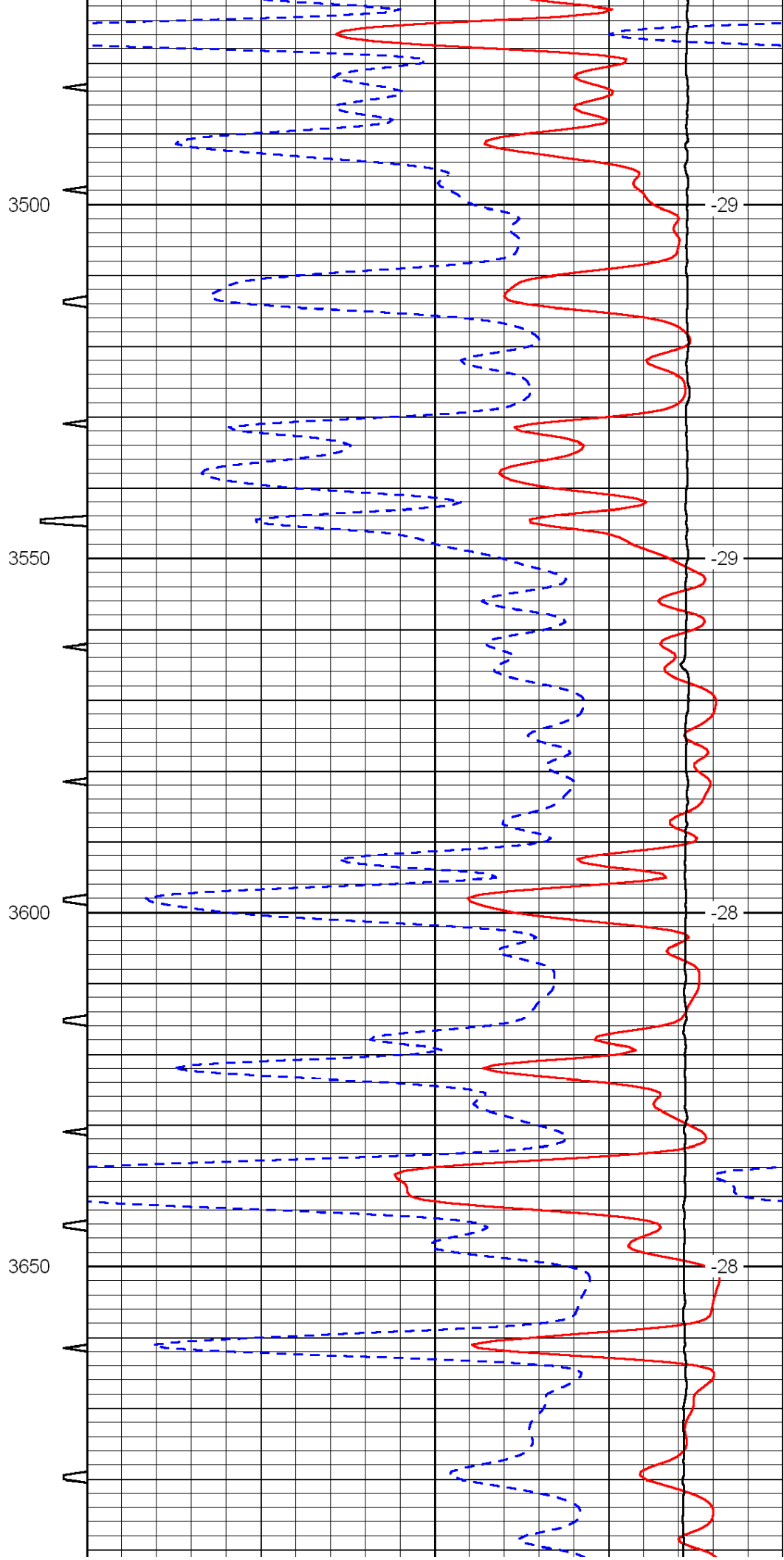
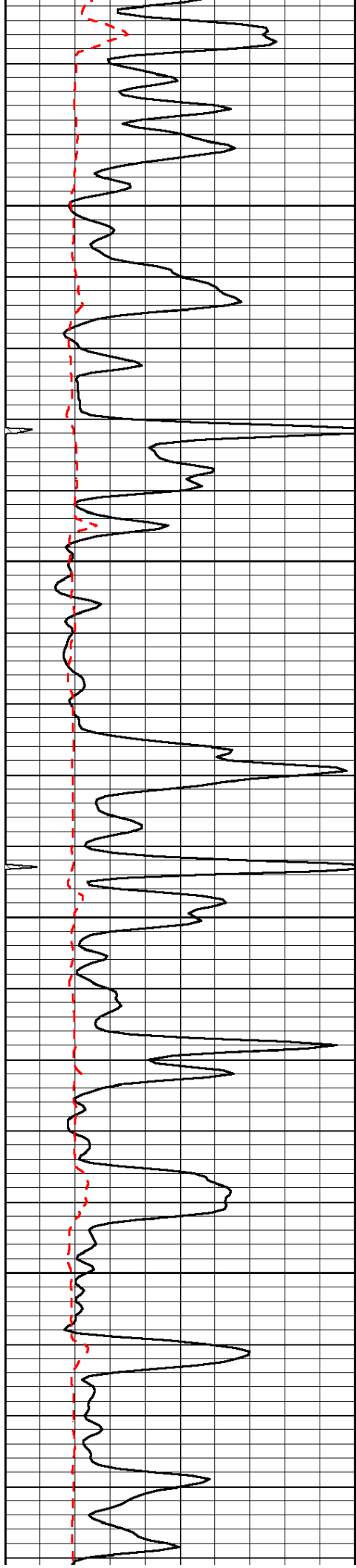


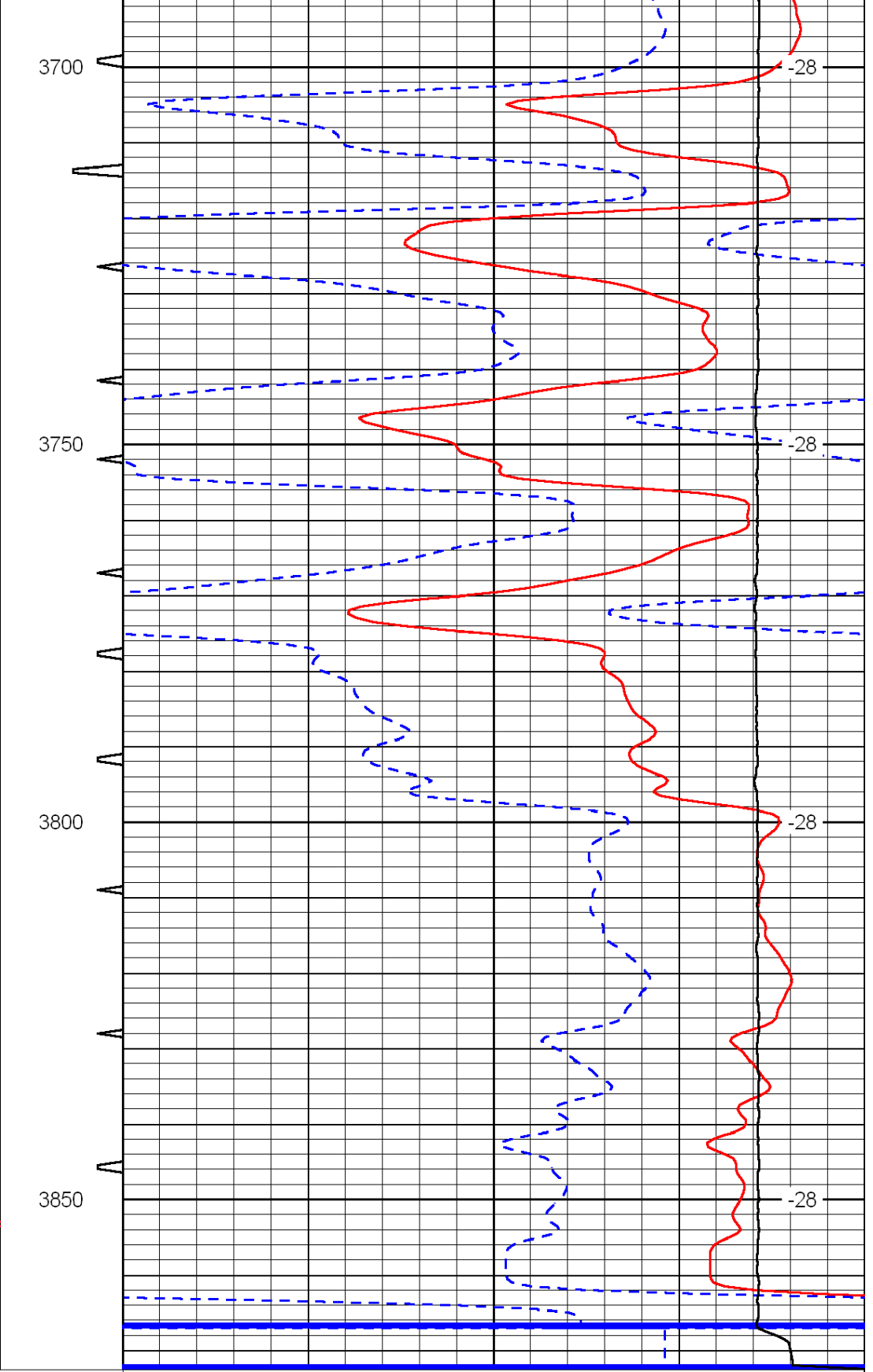
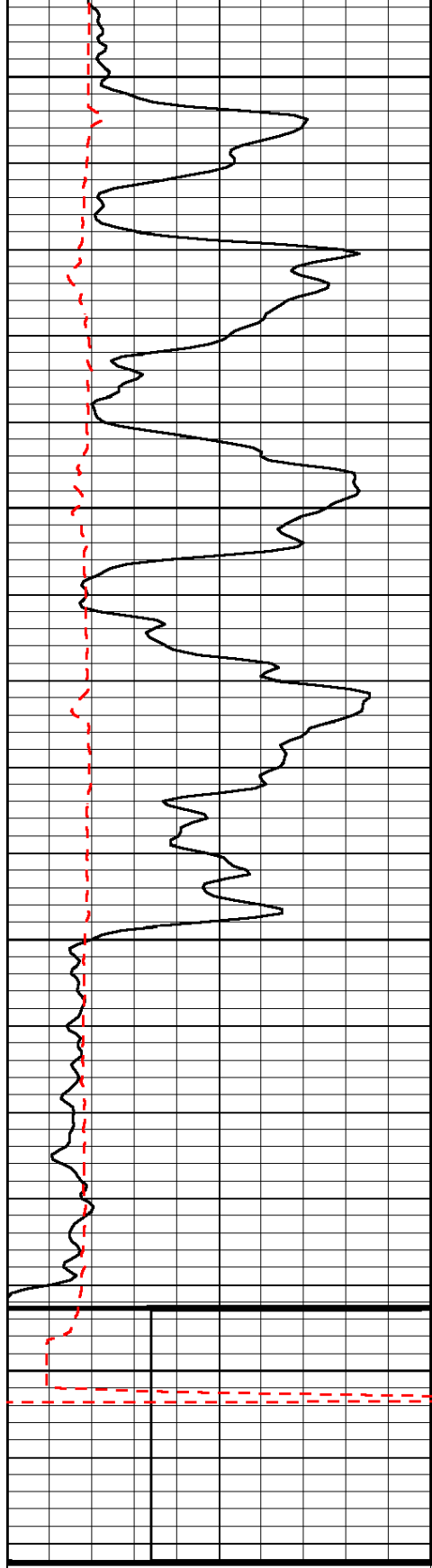












0	Gamma Ray	150	Sonic Int	140	Delta Time (usec/ft)	40
150	Gamma Ray	300	5	0	SPOR	-10
6	Caliper (GAPI)	16		15000	LTEN (lb)	0
LSPD						