



**DIGITAL LOG** (785) 625-3858

Dual Induction Log

API No. 15-051-26,027-00-00

Company Meridian Energy Inc.  
 Well Triumph Trust No. 1  
 Field Fort Hays State College  
 County Ellis State Kansas

Location 330' FNL & 2100' FEL

Sec: 2 Twp: 14S Rge: 19W

Other Services  
 CNL/CDL  
 BHCS

Permanent Datum	Ground Level	Elevation 2155	K.B. 2163
Log Measured From	Kelly Bushing	8 Ft. Above Perm. Datum	D.F. 2155
Drilling Measured From	Kelly Bushing		G.L. 2155
Date	10/25/2010		
Run Number	One		
Depth Driller	3860		
Depth Logger	3867		
Bottom Logged Interval	3866		
Top Log Interval	200		
Casing Driller	8.625 @ 221		
Casing Logger	220		
Bit Size	7.875		
Type Fluid in Hole	Chemical		
Salinity, ppm CL	6.100		
Density / Viscosity	8.8 50		
pH / Fluid Loss	11.0 7.6		
Source of Sample	Flowline		
Rm @ Meas. Temp	1.1 @ 60		
Rmf @ Meas. Temp	.83 @ 60		
Rmc @ Meas. Temp	1.49 @ 60		
Source of Rmf / Rmc	Charts		
Rm @ BHT	.57 @ 117		
Operating Rig Time	4 Hours		
Max Rec. Temp. F	117		
Equipment Number	17		
Location	Hays		
Recorded By	Mike Garrison		
Witnessed By	Neal LaFon		

<<< Fold Here >>>

All interpretations are opinions based on inferences from electrical or other measurements and we cannot and do not guarantee the accuracy or correctness of any interpretation, and we shall not, except in the case of gross or willful negligence on our part, be liable or responsible for any loss, costs, damages, or expenses incurred or sustained by anyone resulting from any interpretation made by any of our officers, agents or employees. These interpretations are also subject to our general terms and conditions set out in our current Price Schedule.

Comments

Thank you for using Log-Tech, Inc.  
 (785) 625-3858

Hays, 3 West on Golf Course Rd, 1/2 North, Northwest Into

Database File: c:\warrior\data\meridian\_triumph trust no. 1\meridianhd.db  
 Dataset Pathname: dil\merstck  
 Presentation Format: dil2in  
 Dataset Creation: Mon Oct 25 02:11:12 2010  
 Charted by: Depth in Feet scaled 1:600

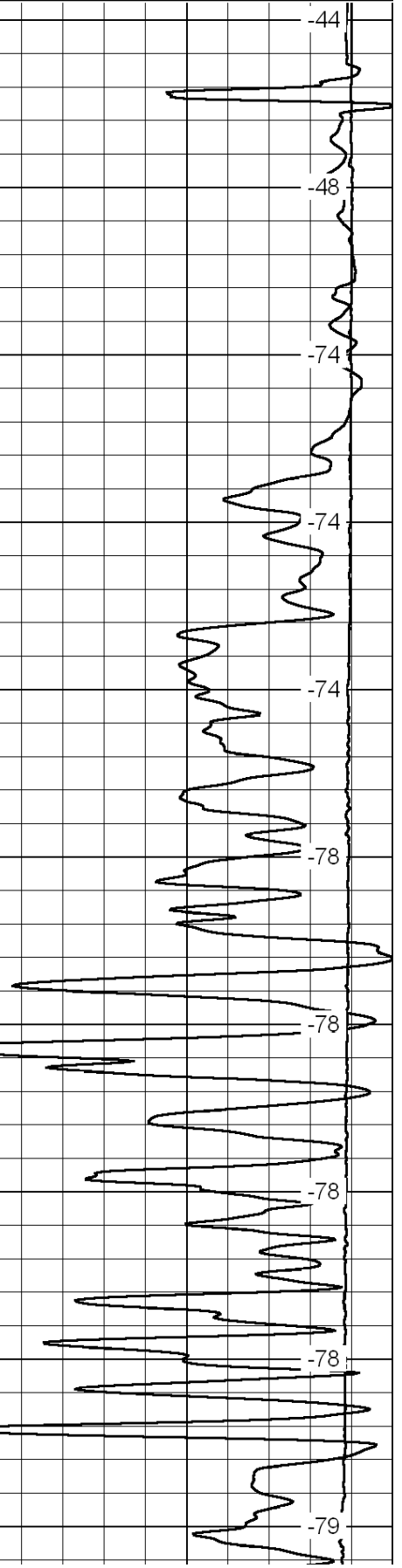
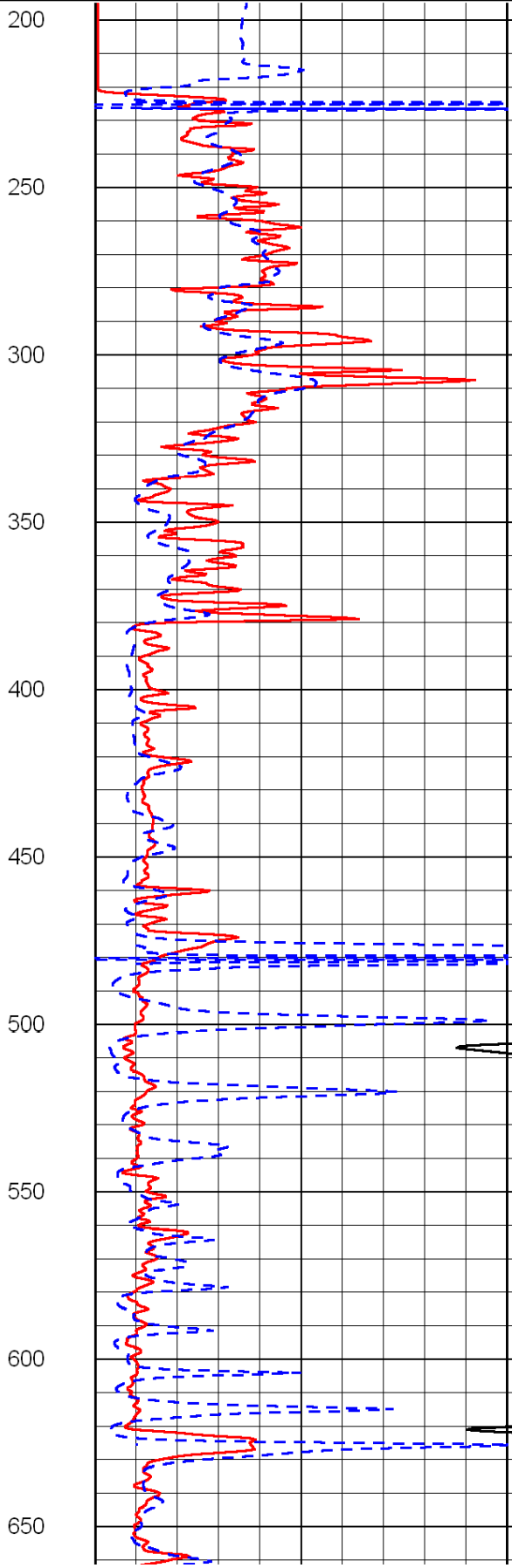
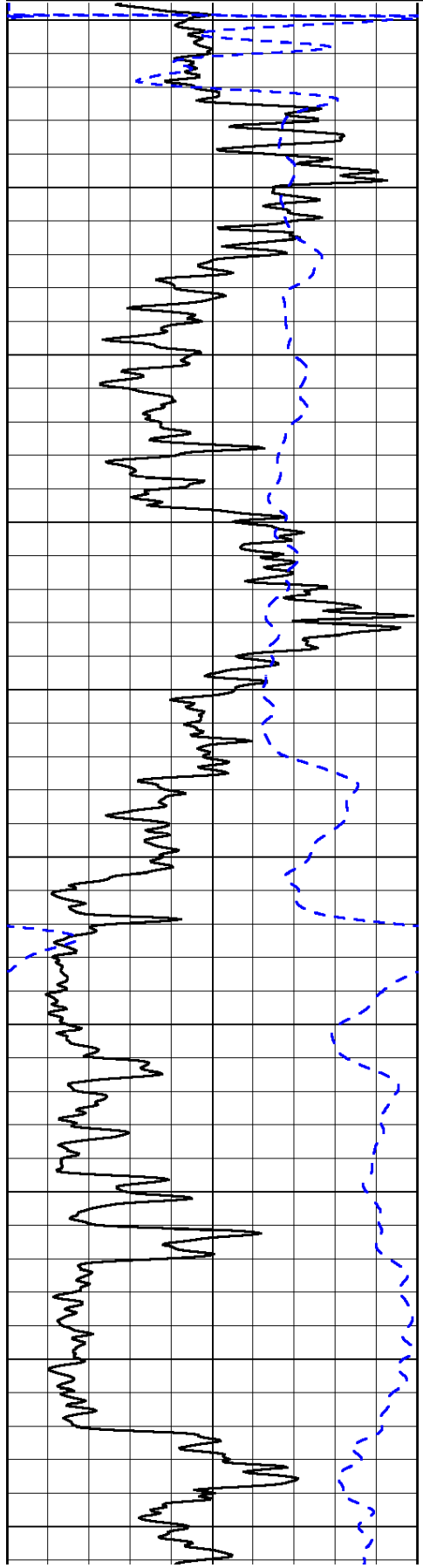
0	Gamma Ray	150
-200	SP (mV)	0

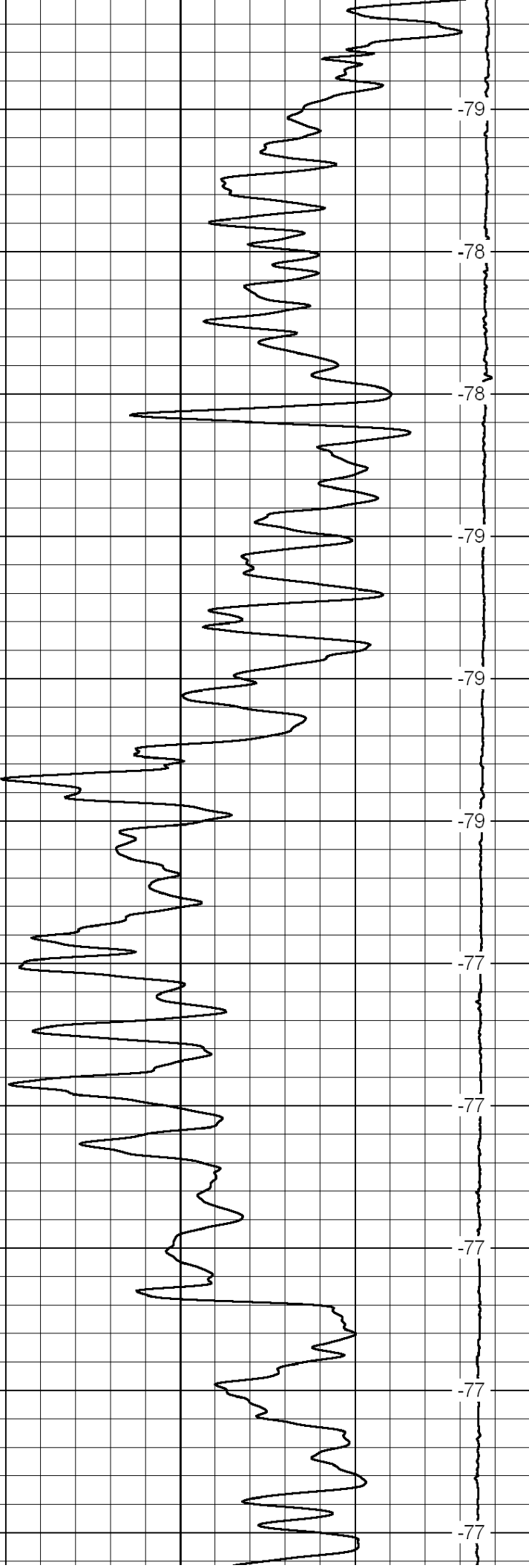
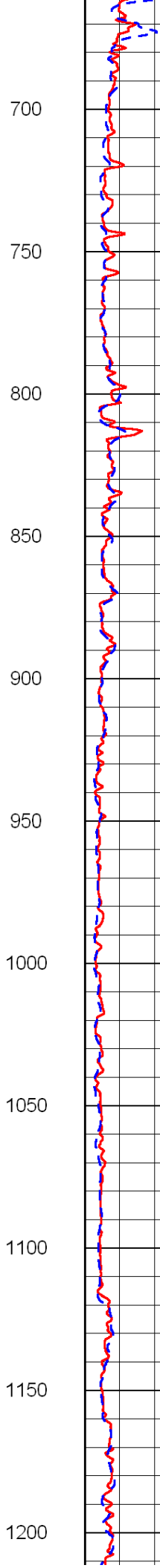
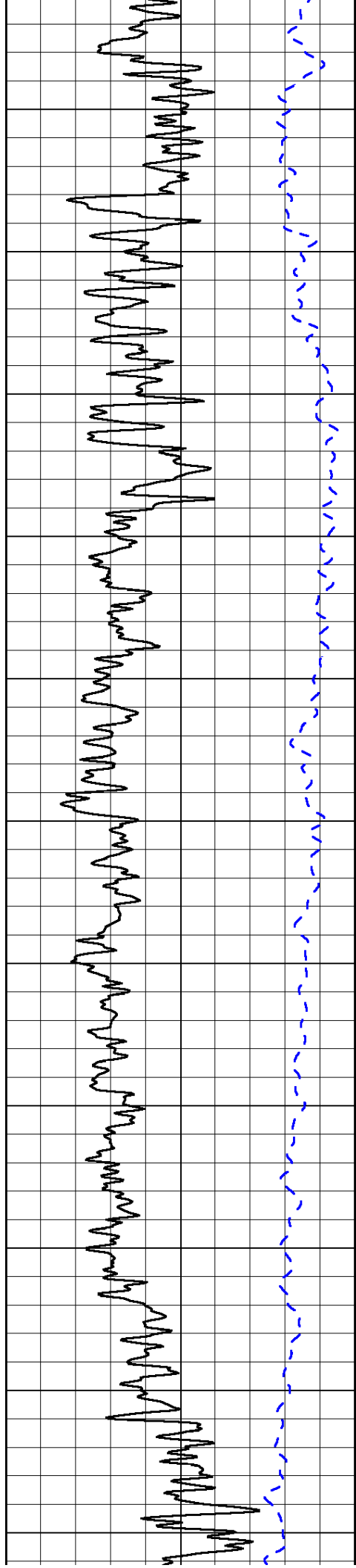
0	Shallow Resistivity	50
0	Deep Resistivity	50

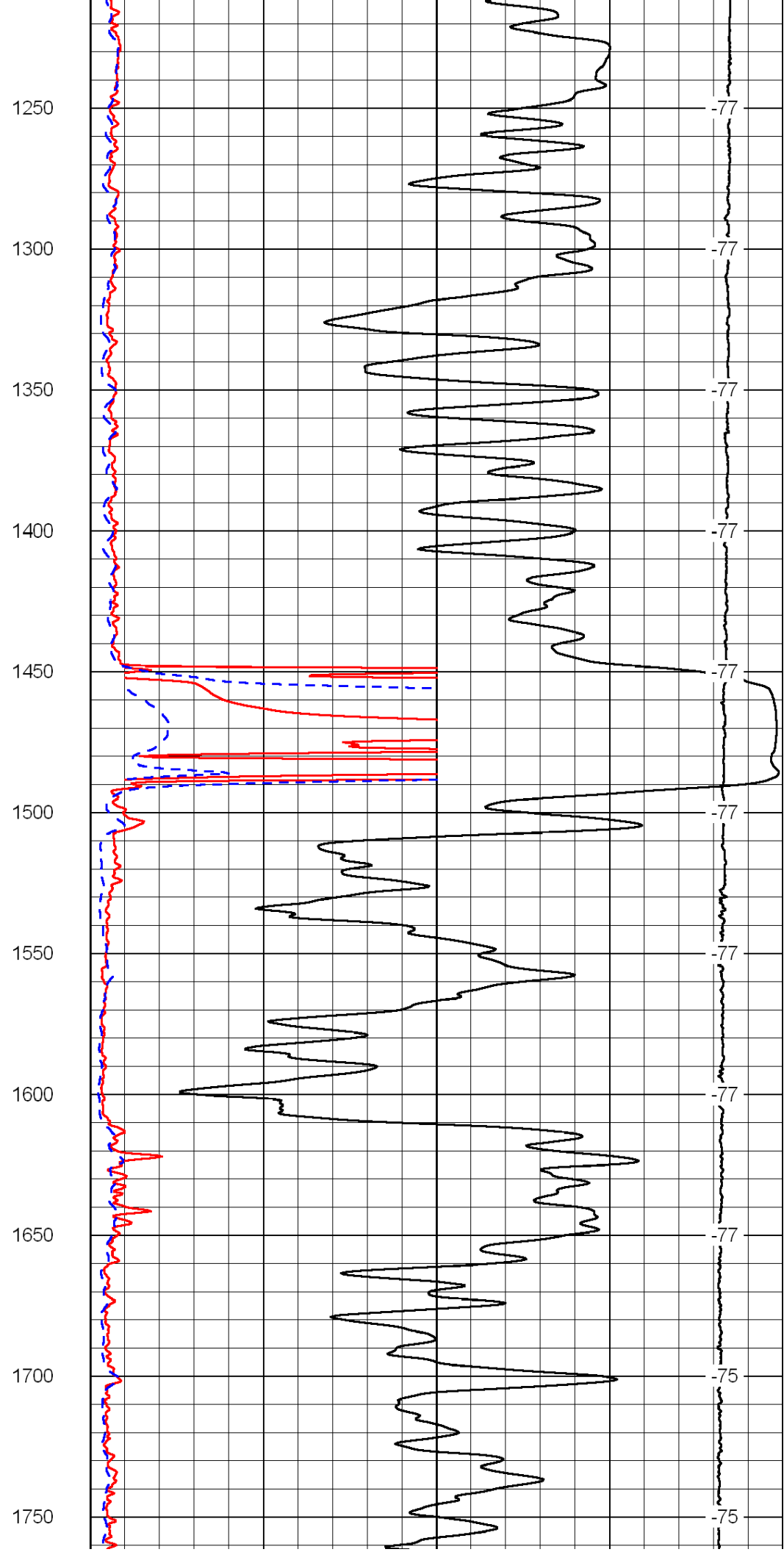
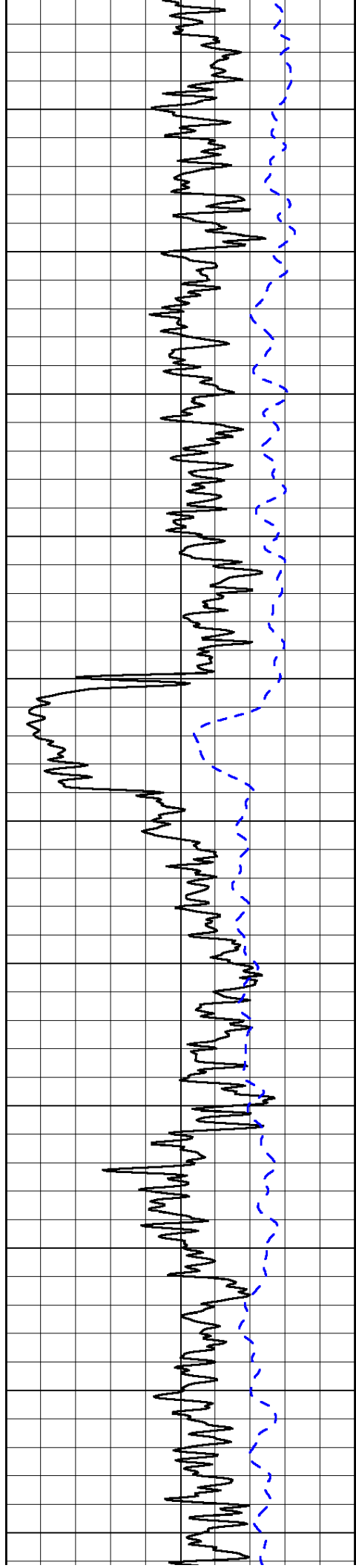
LSPD

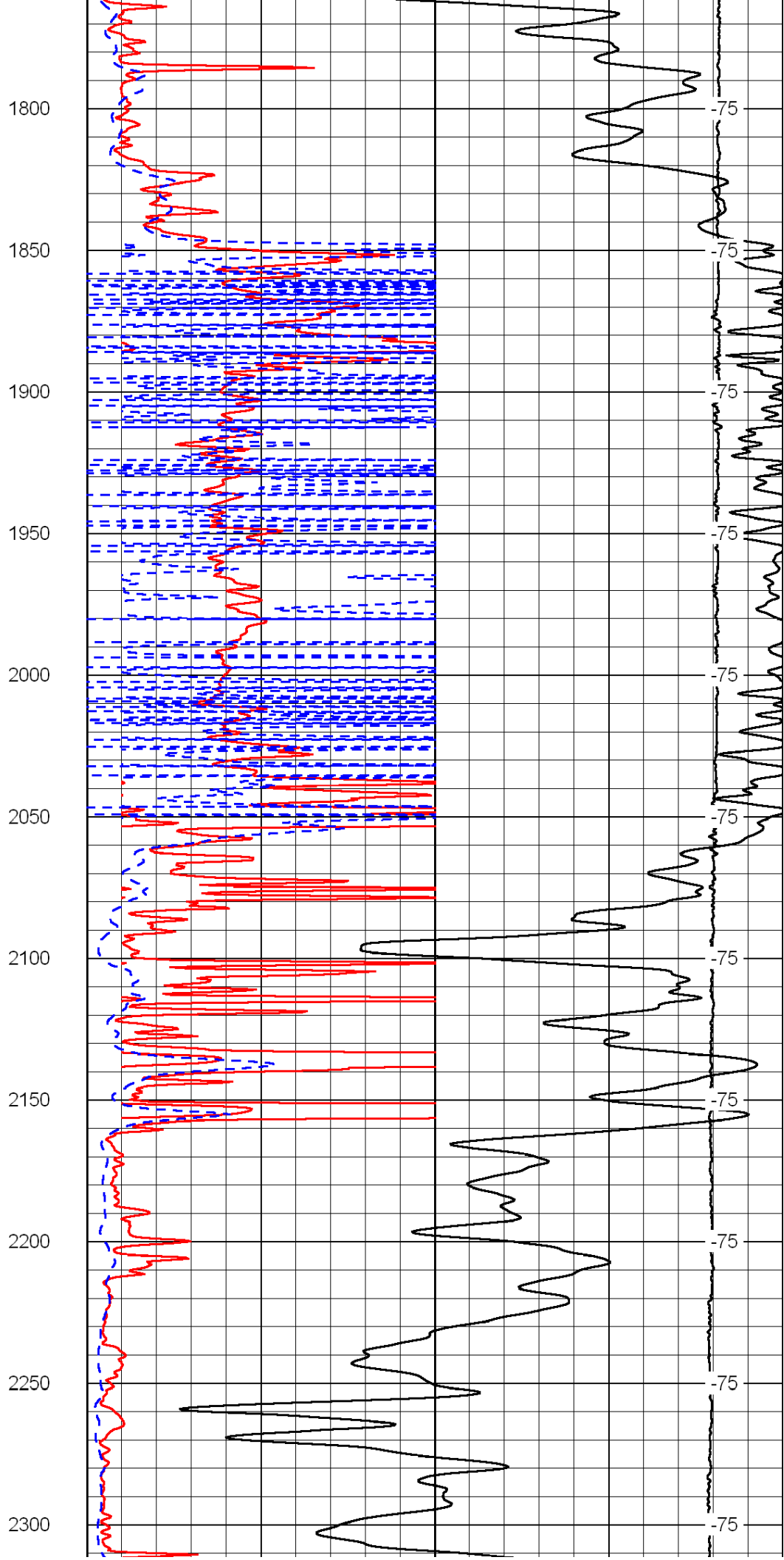
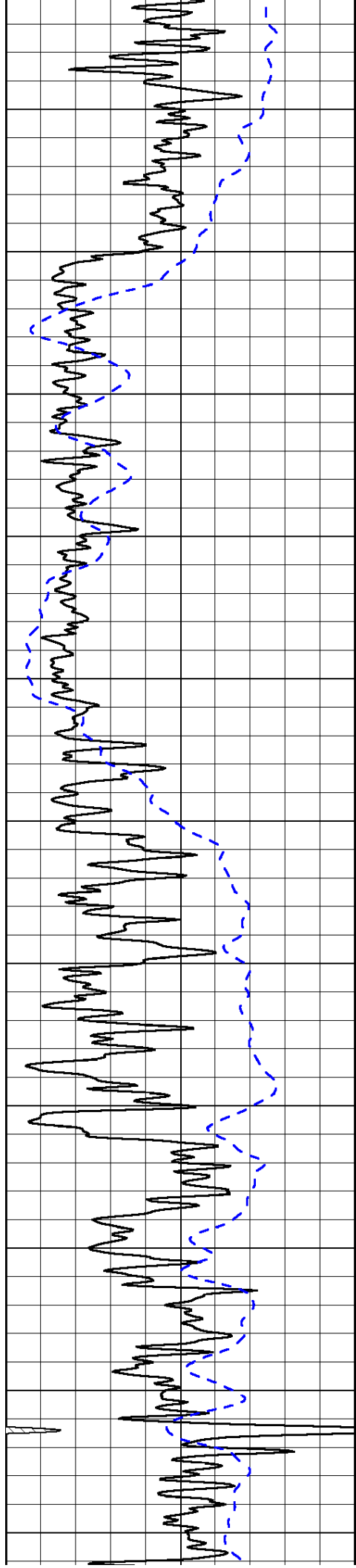
1000	Conductivity	0
15000	Line Tension	0

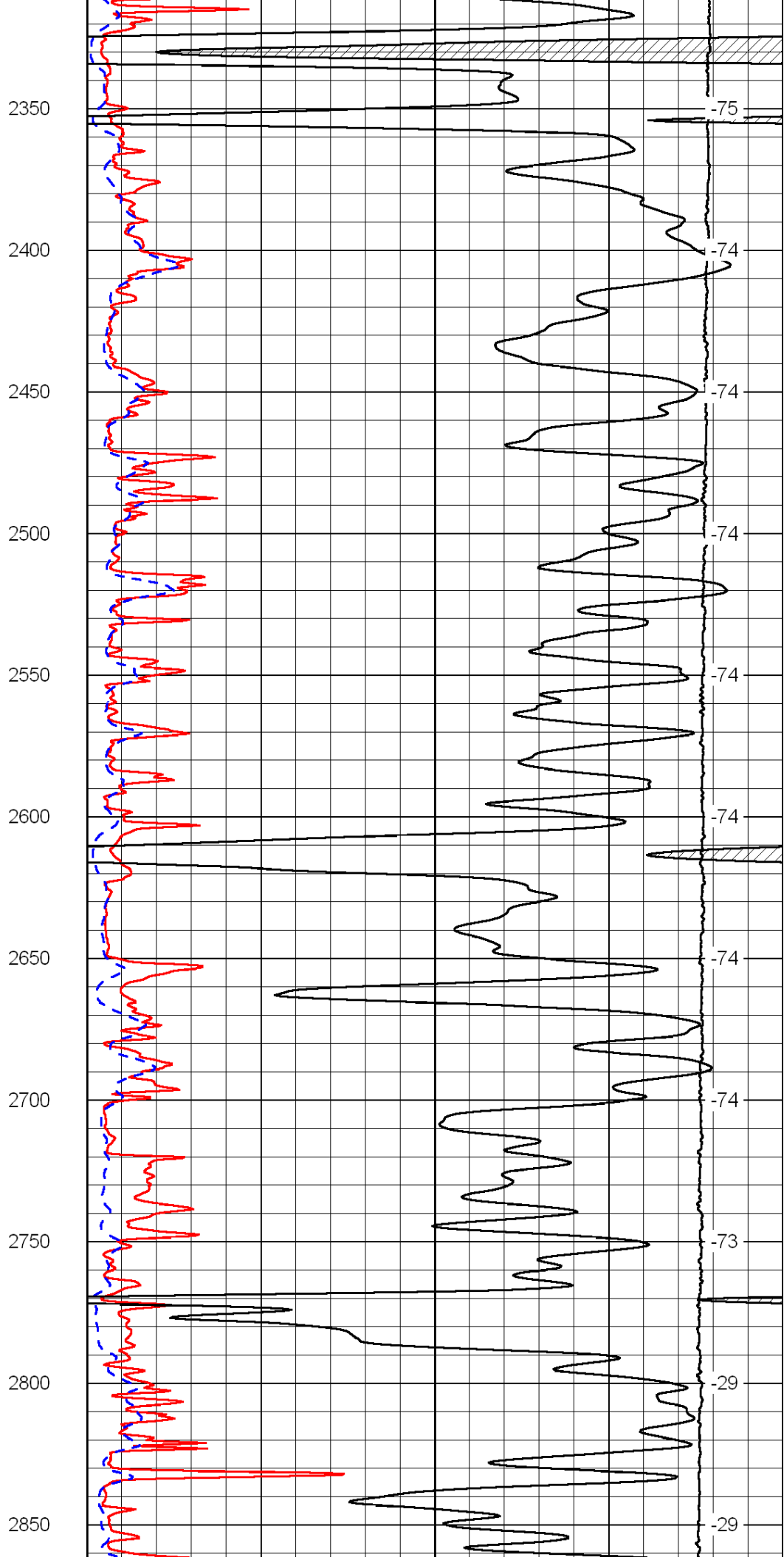
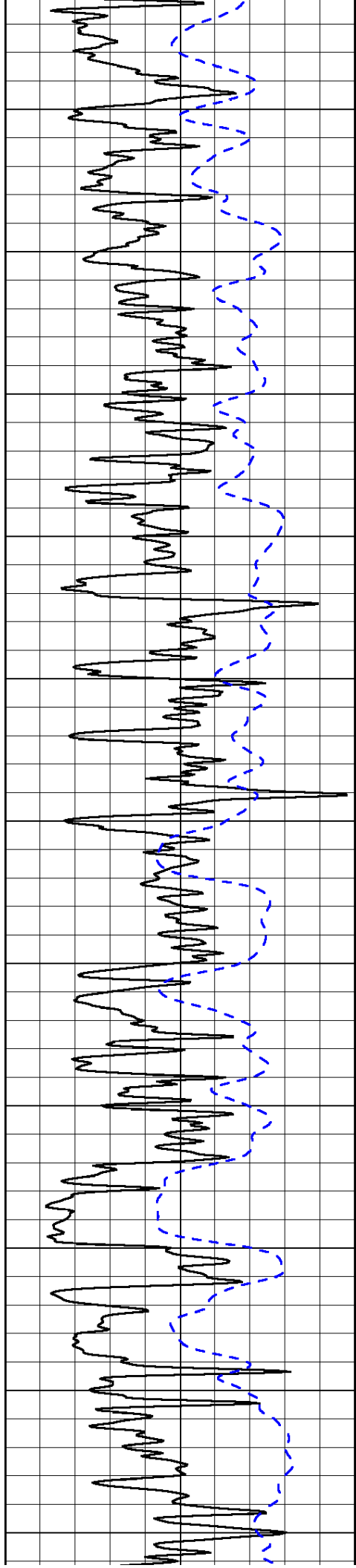
50	Shallow Resistivity	500
50	Deep Resistivity	500

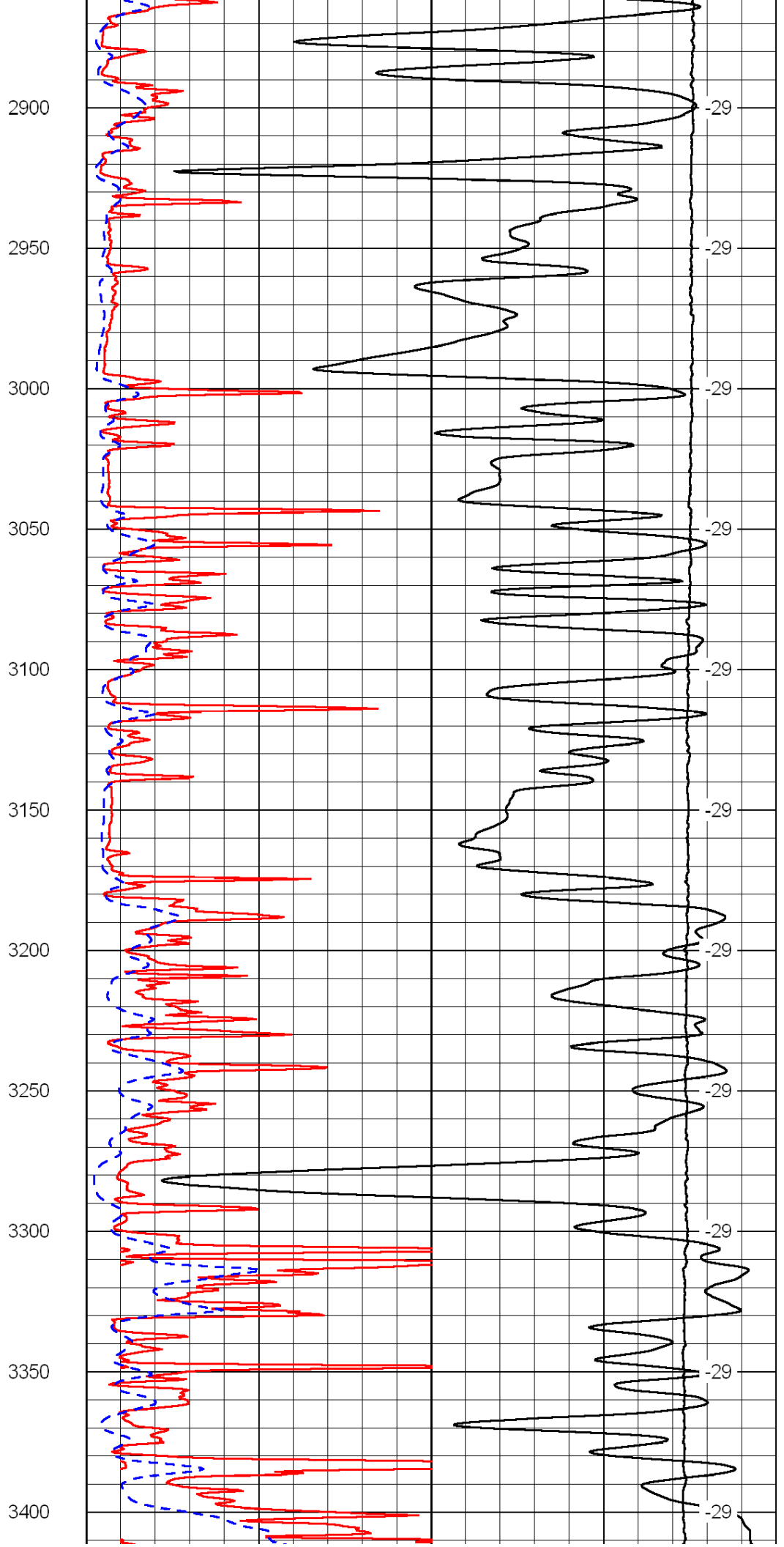
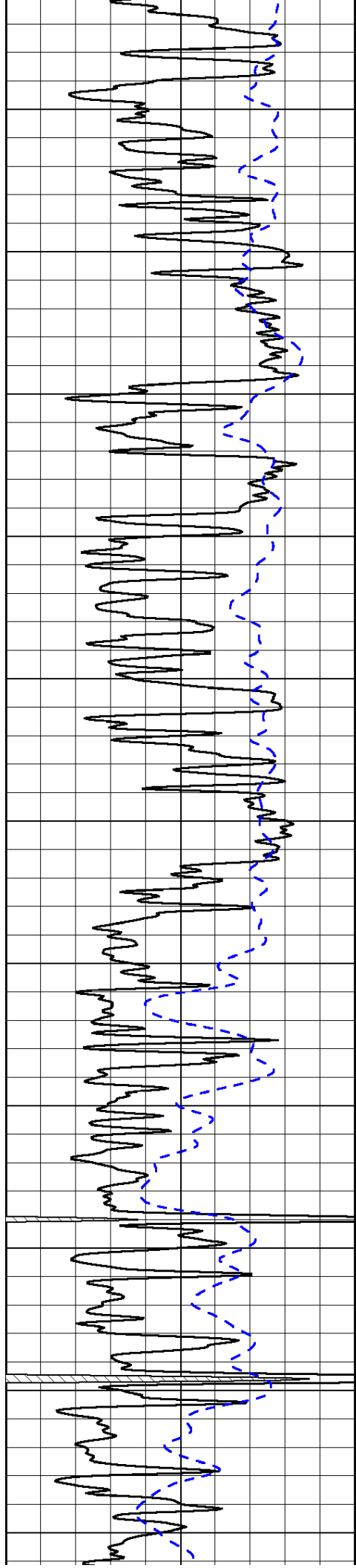


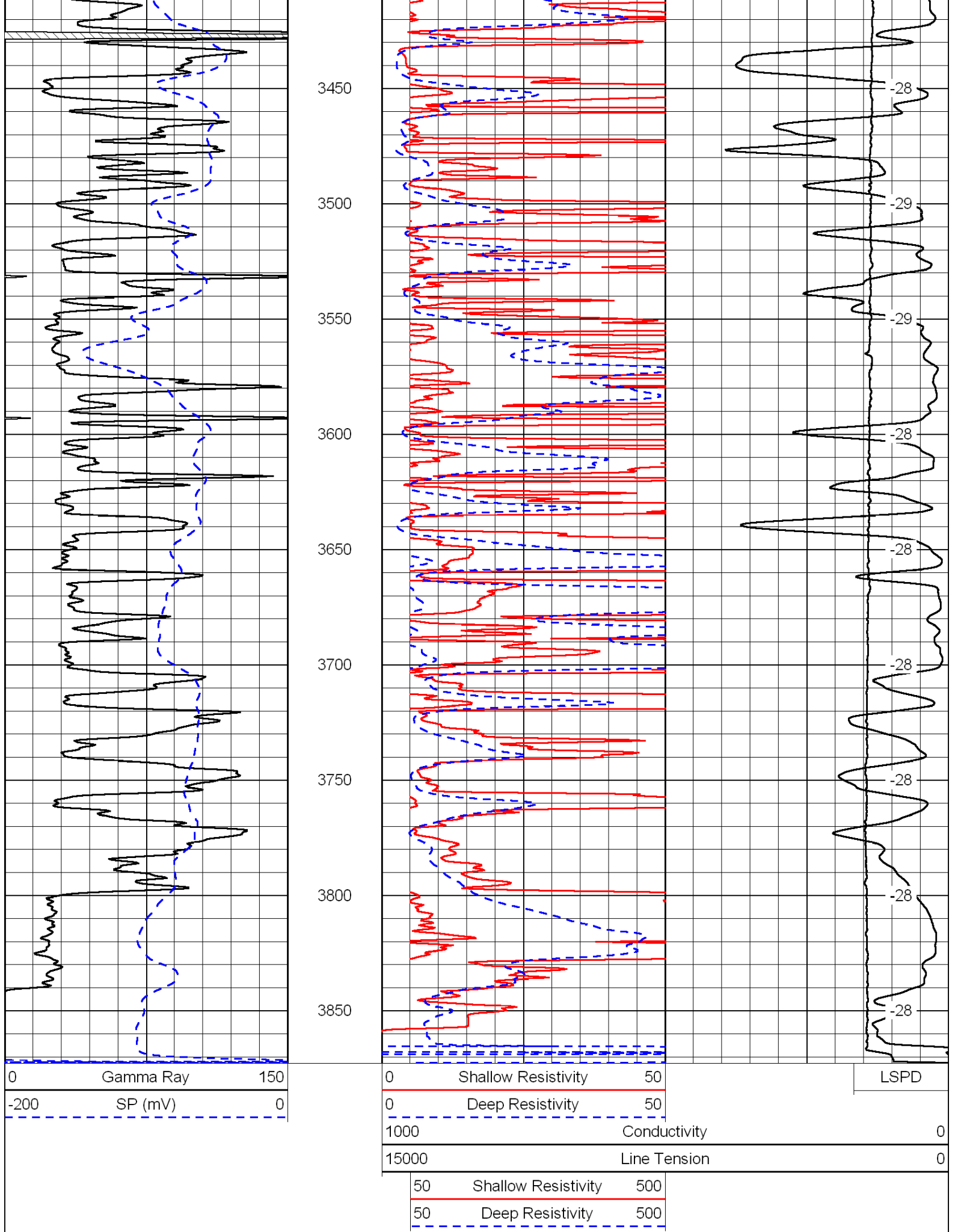










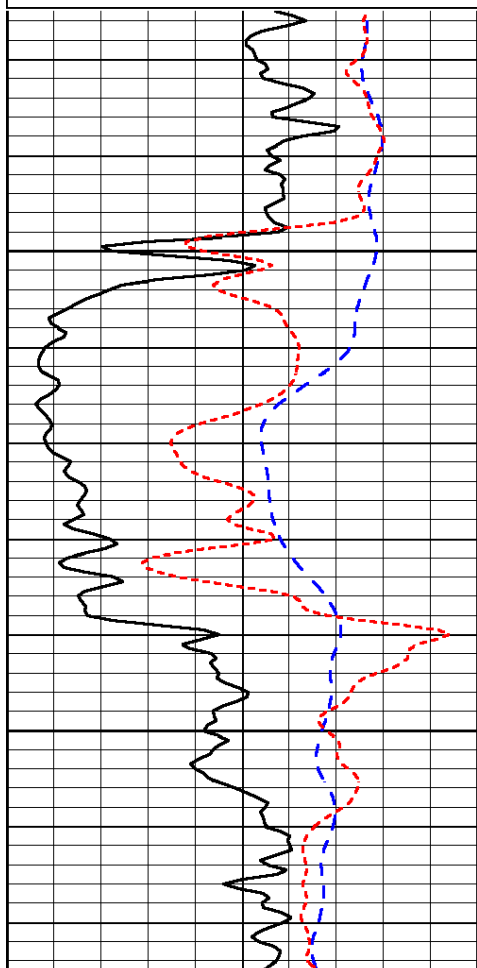


Database File: c:\warrior\data\meridian\_triumph trust no. 1\meridianhd.db  
 Dataset Pathname: dil/merstck  
 Presentation Format: dil  
 Dataset Creation: Mon Oct 25 02:11:12 2010  
 Charted by: Depth in Feet scaled 1:240

0	Gamma Ray	150
-200	SP (mV)	0
-160	Rxo / Rt	40

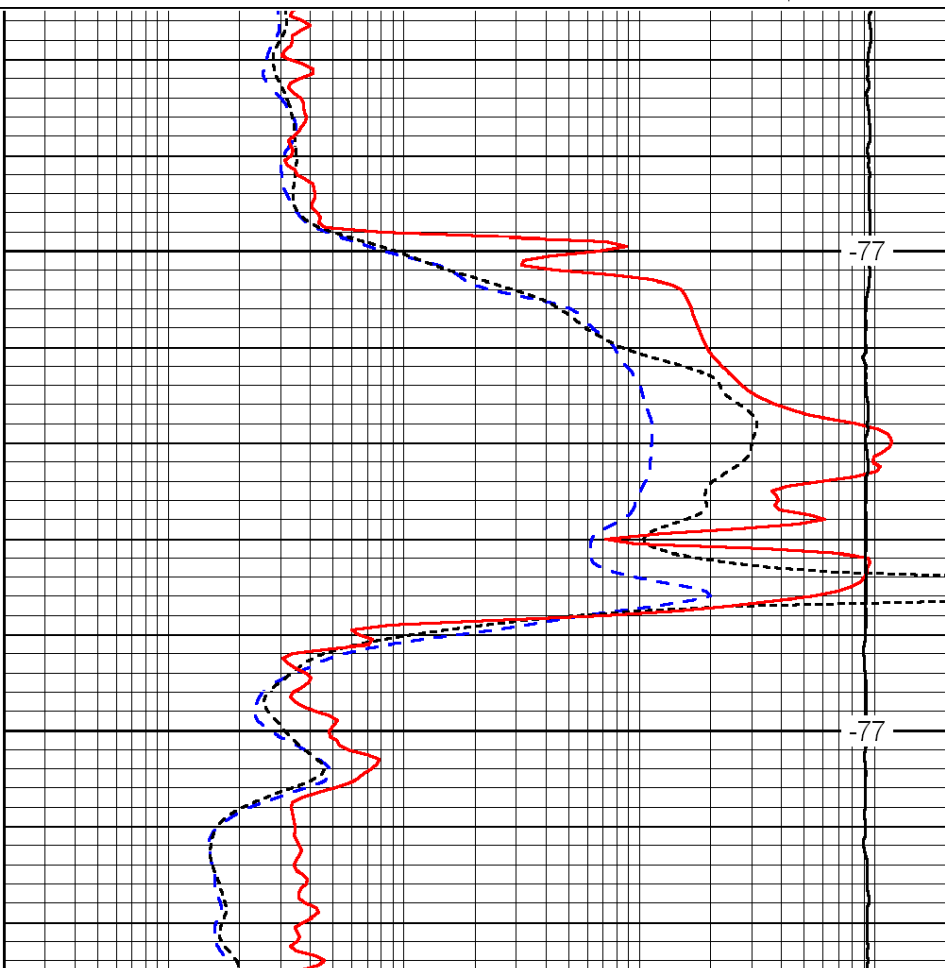
0.2	Deep Resistivity	2000
0.2	Medium Resistivity	2000
0.2	Shallow Resistivity	2000
15000	Line Tension	0

LSPD



1450

1500



-77

-77

0	Gamma Ray	150
-200	SP (mV)	0
-160	Rxo / Rt	40

0.2	Deep Resistivity	2000
0.2	Medium Resistivity	2000
0.2	Shallow Resistivity	2000
15000	Line Tension	0

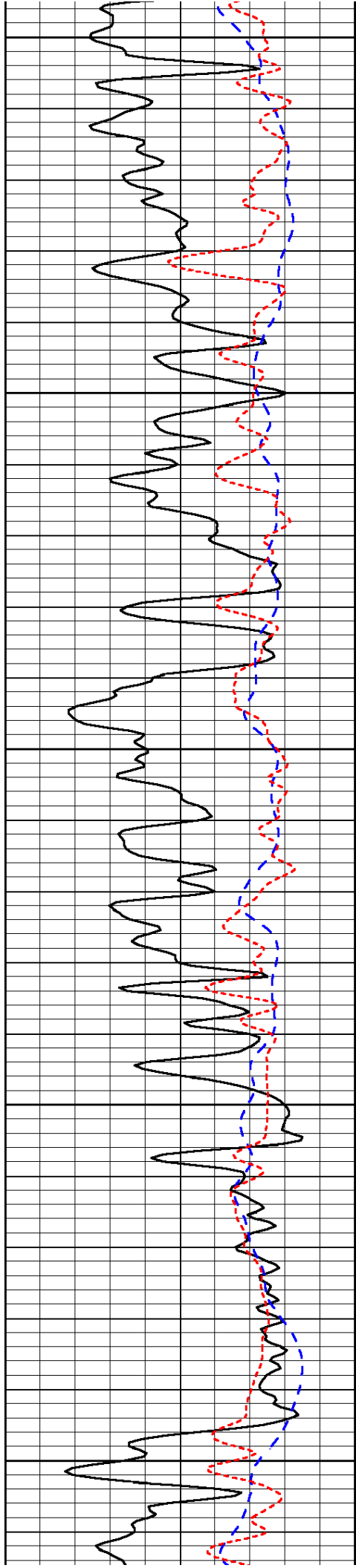
LSPD

Database File: c:\warrior\data\meridian\_triumph trust no. 1\meridianhd.db  
 Dataset Pathname: dil/merstck  
 Presentation Format: dil  
 Dataset Creation: Mon Oct 25 02:11:12 2010  
 Charted by: Depth in Feet scaled 1:240

0	Gamma Ray	150
-200	SP (mV)	0
-160	Rxo / Rt	40

0.2	Deep Resistivity	2000
0.2	Medium Resistivity	2000
0.2	Shallow Resistivity	2000
15000	Line Tension	0

LSPD



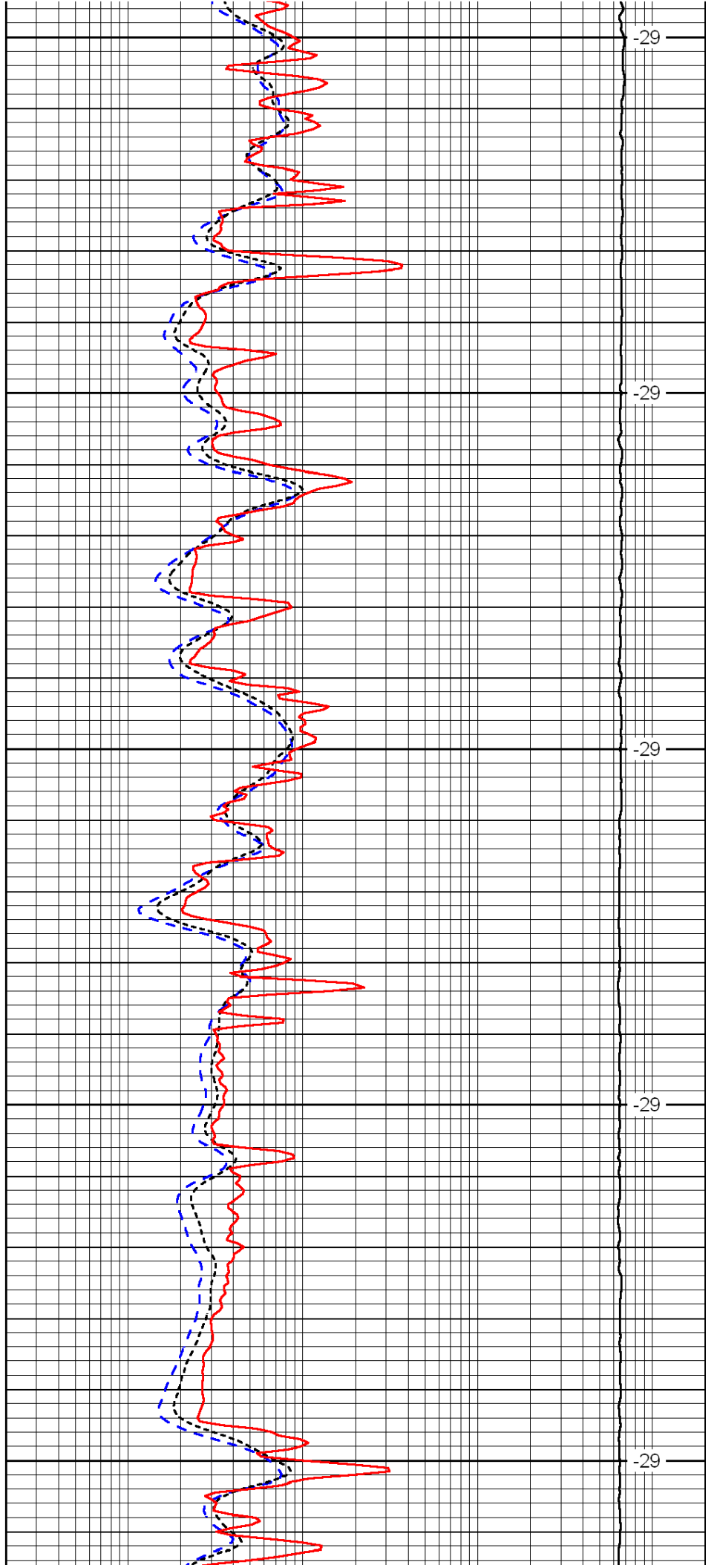
2800

2850

2900

2950

3000



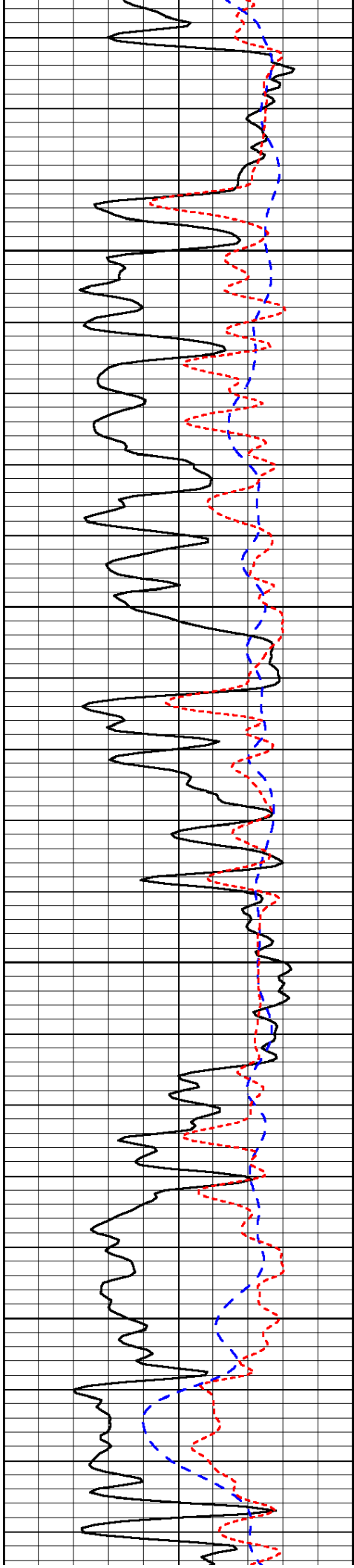
-29

-29

-29

-29

-29

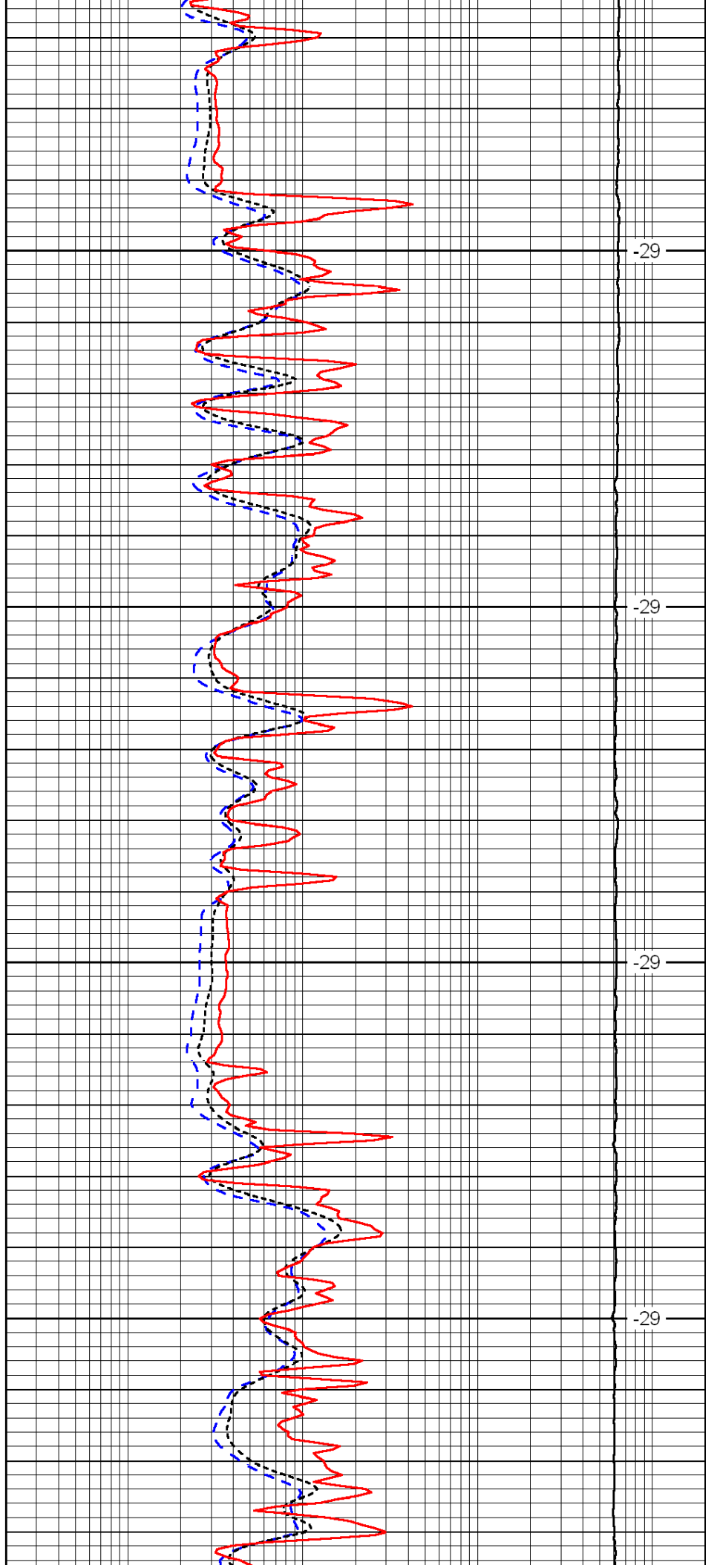


3050

3100

3150

3200

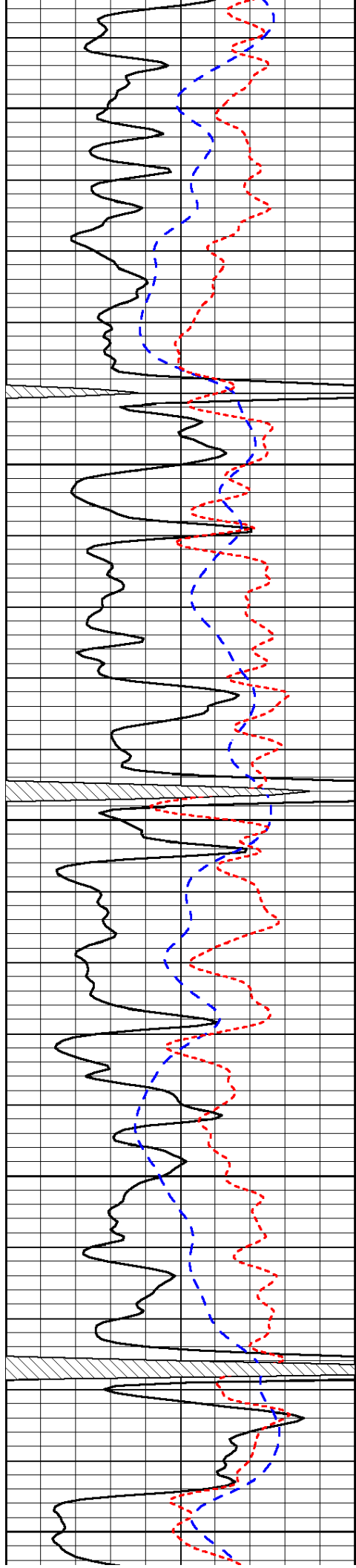


-29

-29

-29

-29



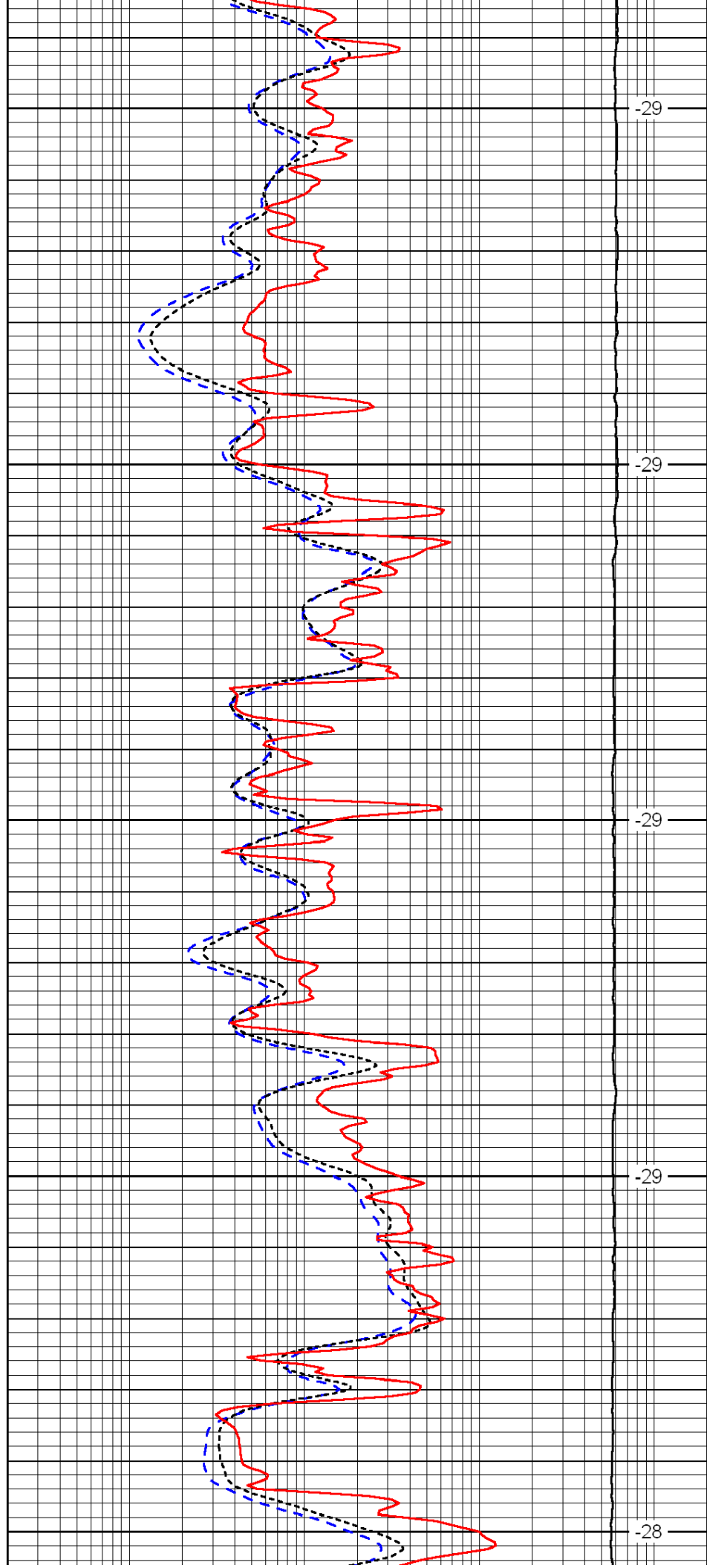
3250

3300

3350

3400

3450



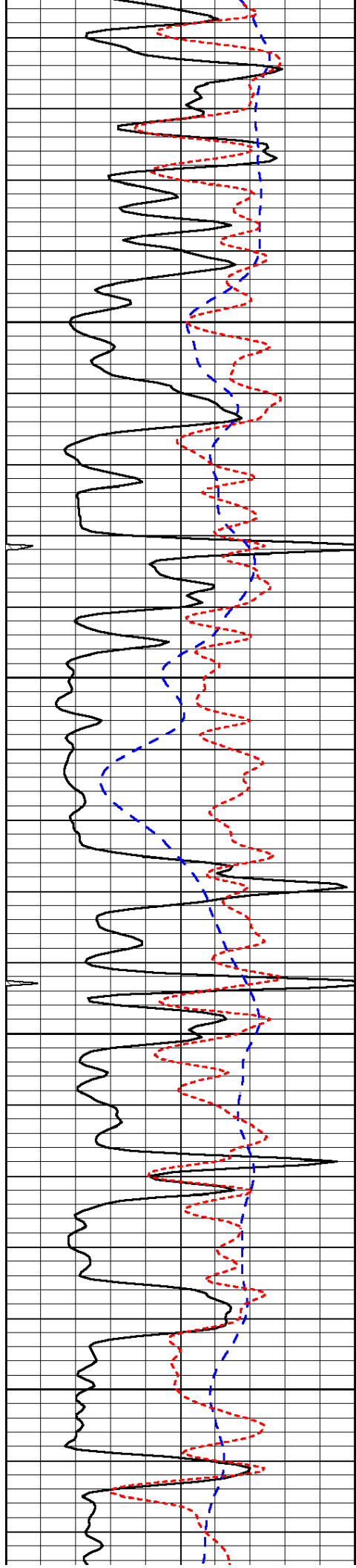
-29

-29

-29

-29

-28

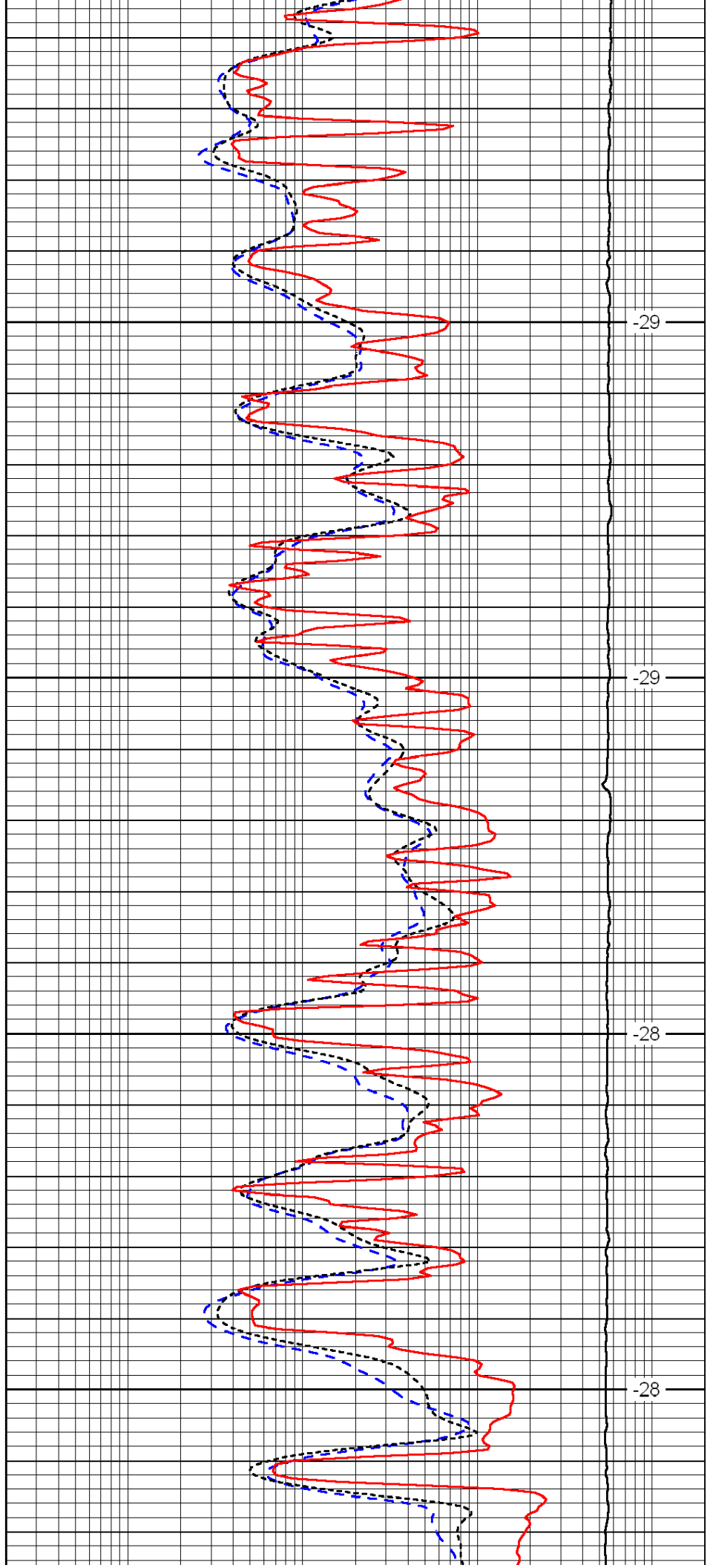


3500

3550

3600

3650

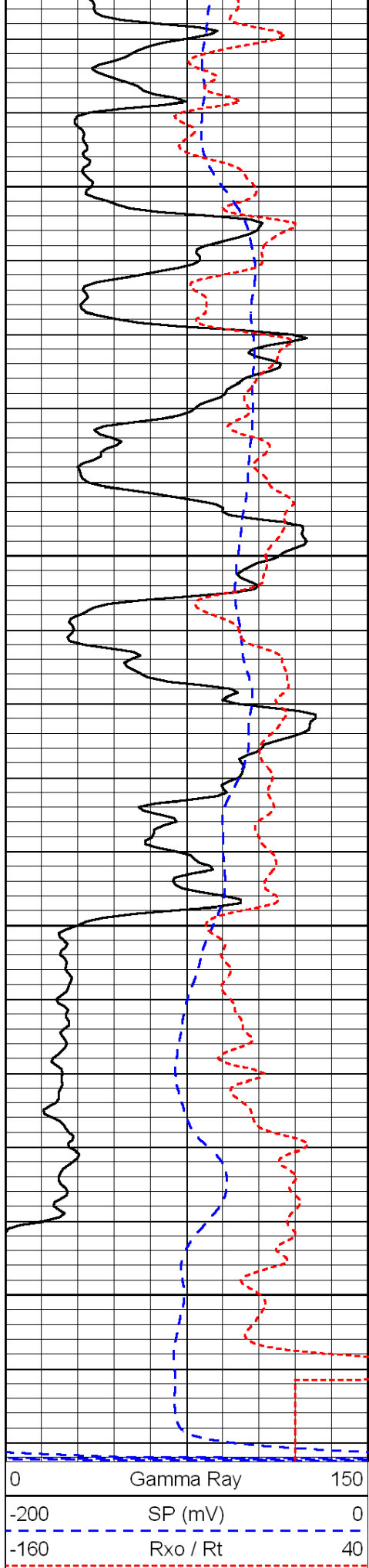


-29

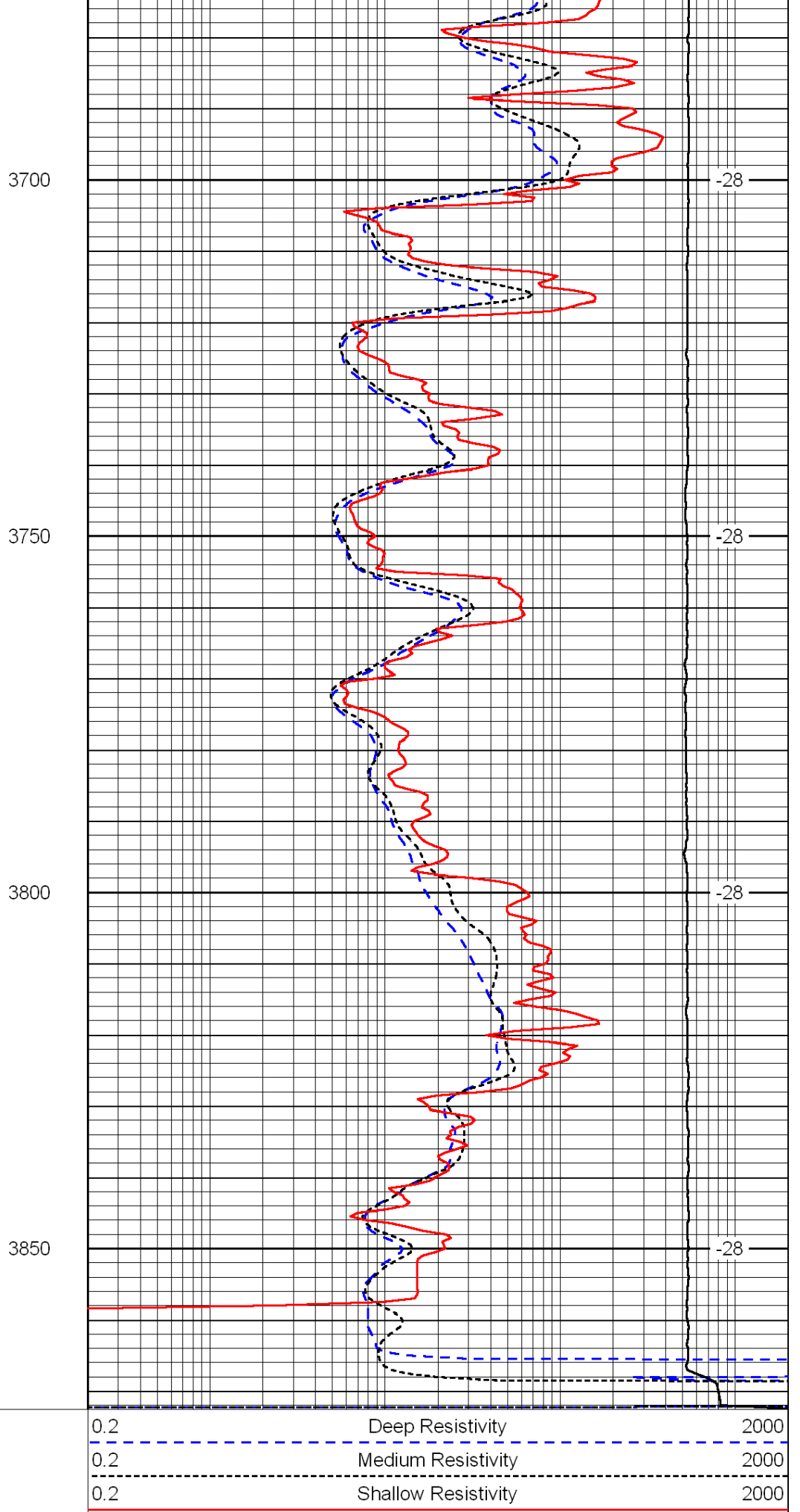
-29

-28

-28



0	Gamma Ray	150
-200	SP (mV)	0
-160	Rxo / Rt	40



0.2	Deep Resistivity	2000
0.2	Medium Resistivity	2000
0.2	Shallow Resistivity	2000
15000	Line Tension	0

