



Dual Compensated  
Porosity Log

DIGITAL LOG (785) 625-3858

API No. 15-051-26,027-00-00

Company Meridian Energy Inc.  
Well Triumph Trust No. 1  
Field Fort Hays State College  
County Ellis  
State Kansas

Location 330' FNL & 2100' FEL

Sec: 2 Twp: 14S Rge: 19W

Other Services  
DIL  
BHCS

Permanent Datum Ground Level Elevation 2155  
Log Measured From Kelly Bushing 8 Ft. Above Perm. Datum  
Drilling Measured From Kelly Bushing

K.B. 2163  
D.F. G.L. 2155

Date 10/25/2010

Run Number One

Type Log CNL / CDL

Depth Driller 3860

Depth Logger 3867

Bottom Logged Interval 3846

Top Logged Interval 2800

Type Fluid In Hole Chemical

Salinity, PPM CL 6,100

Density 8,8

Level Full

Max. Rec. Temp. F 117

Operating Rig Time 4 Hours

Equipment -- Location 17 Hays

Recorded By Mike Garrison

Witnessed By Neal LaFon

Borehole Record				Casing Record			
Run No.	Bit	From	To	Size	Wgt.	From	To
1	12.25	00	221	8.625	24#	00	221
2	7.875	221	3860				

<<< Fold Here >>>

All interpretations are opinions based on inferences from electrical or other measurements and we cannot and do not guarantee the accuracy or correctness of any interpretation, and we shall not, except in the case of gross or willful negligence on our part, be liable or responsible for any loss, costs, damages, or expenses incurred or sustained by anyone resulting from any interpretation made by any of our officers, agents or employees. These interpretations are also subject to our general terms and conditions set out in our current Price Schedule.

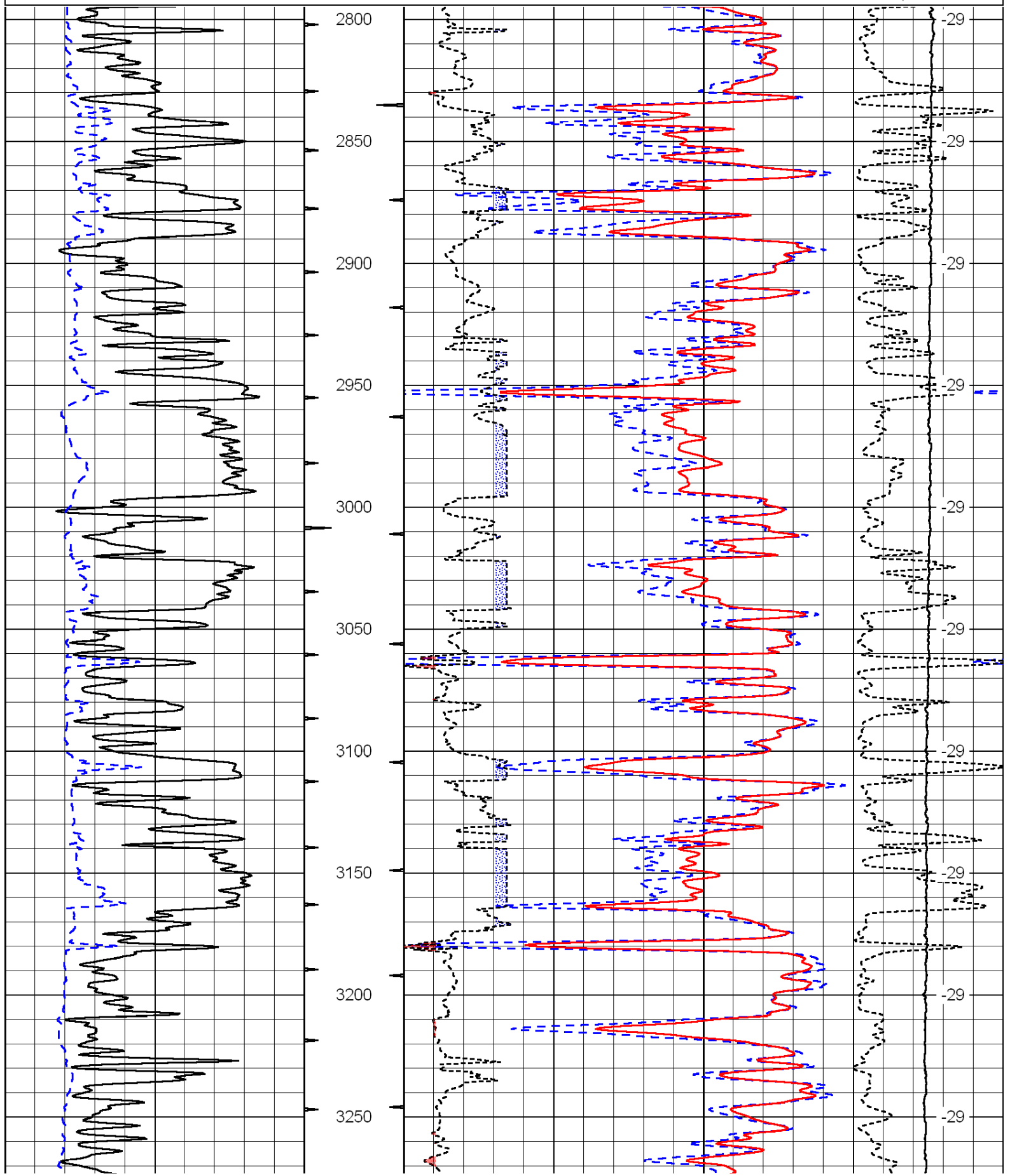
Comments

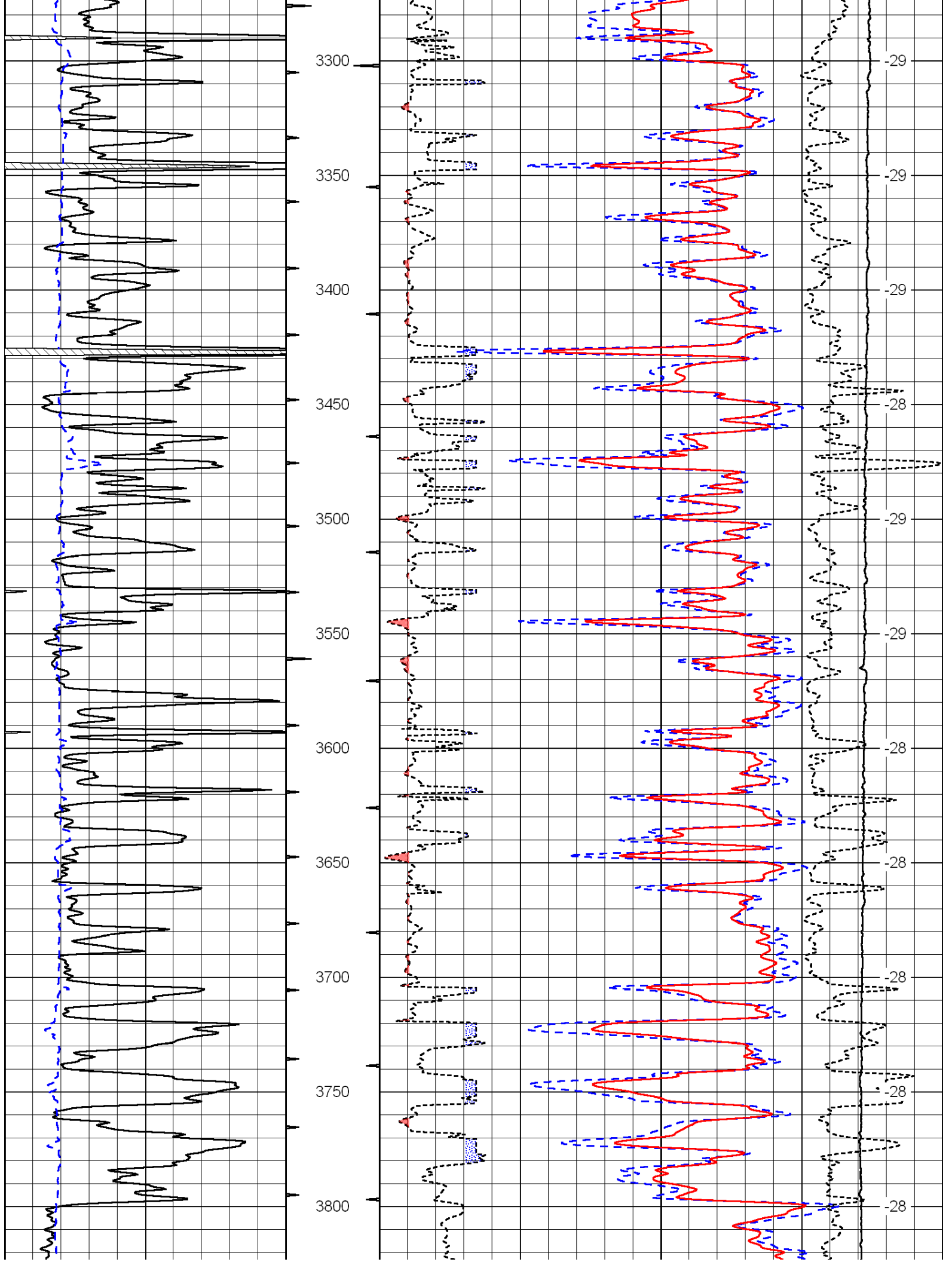
Thank you for using Log-Tech, Inc.  
(785) 625-3858

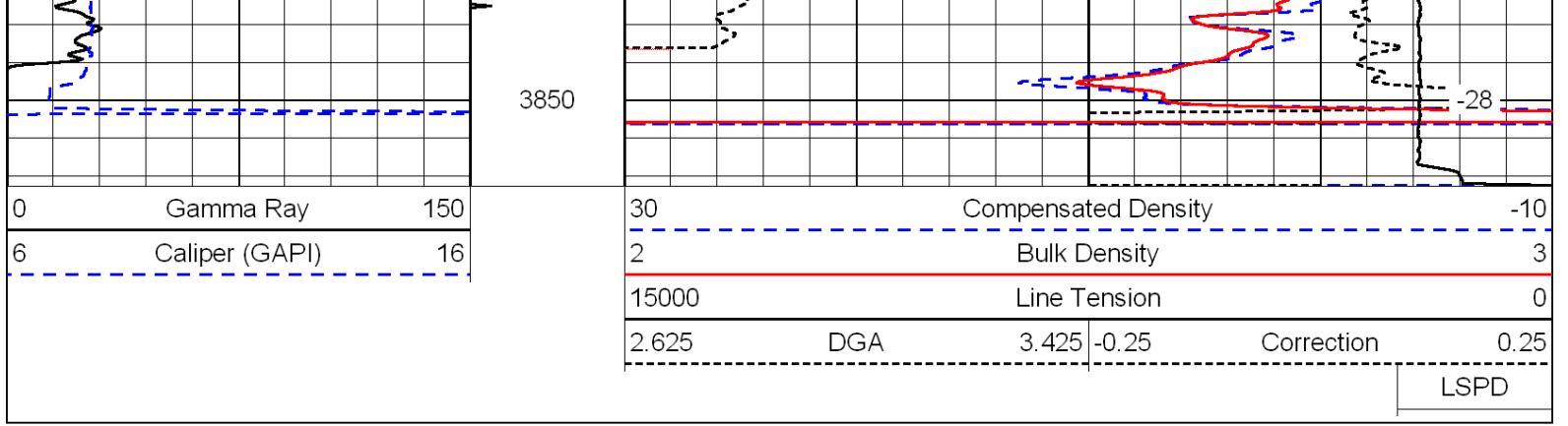
Hays, 3 West on Golf Course Rd, 1/2 North, Northwest Into

0	Gamma Ray	150
6	Caliper (GAPI)	16

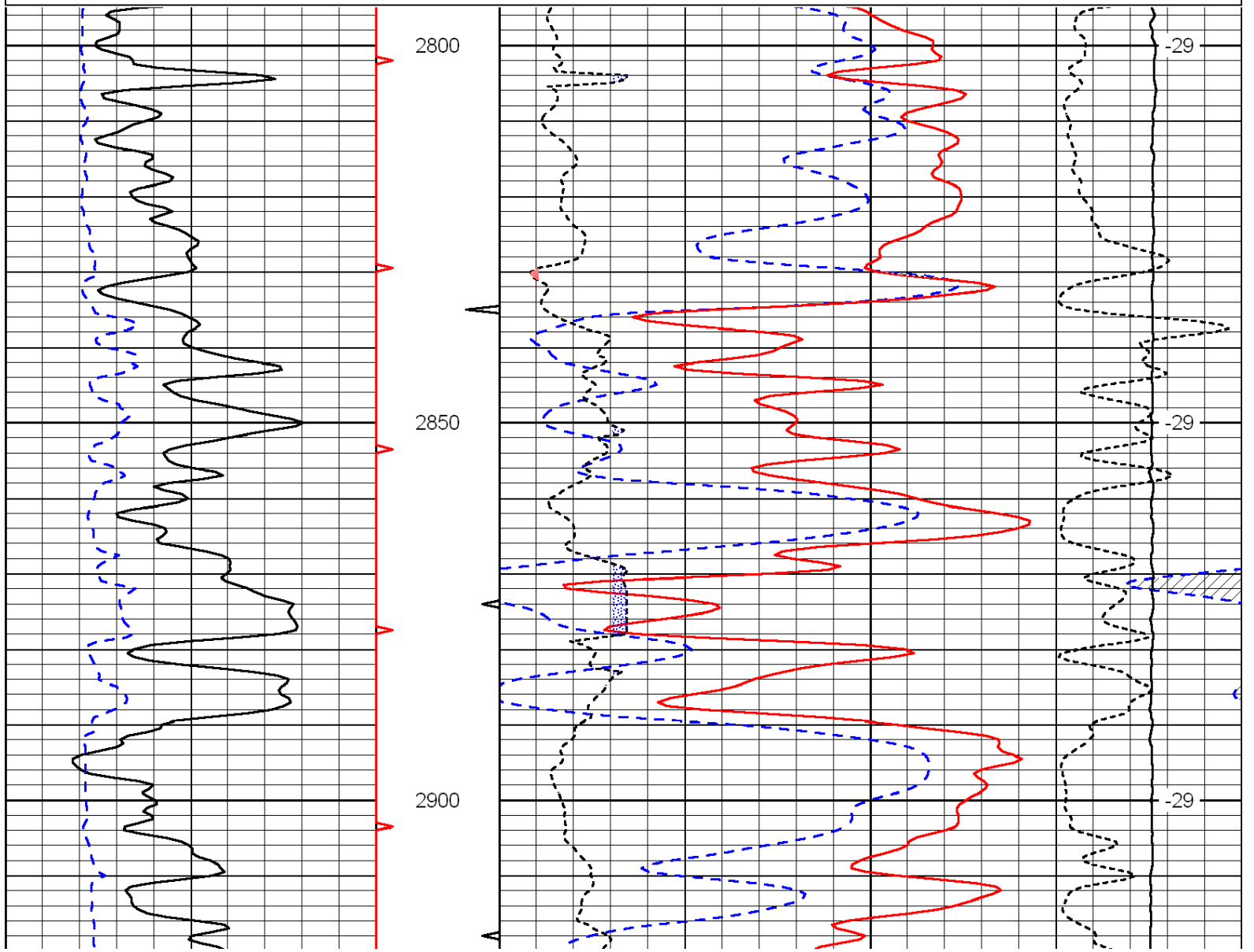
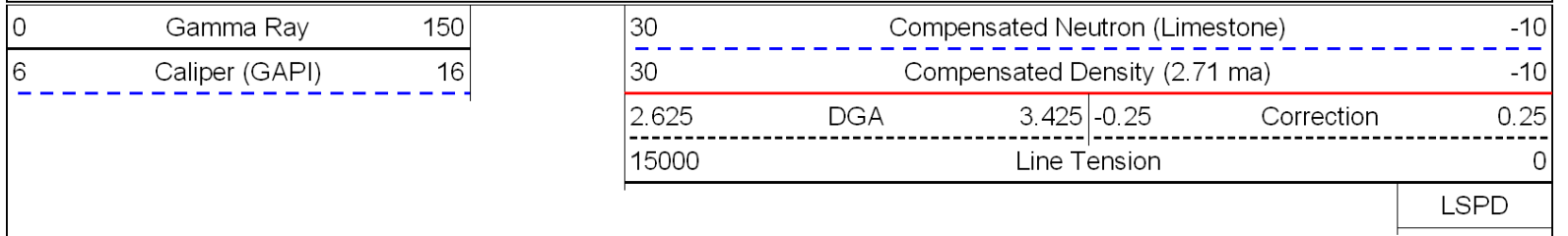
30	Compensated Density		-10
2	Bulk Density		3
15000	Line Tension		0
2.625	DGA	3.425	-0.25
			Correction
			0.25
LSPD			

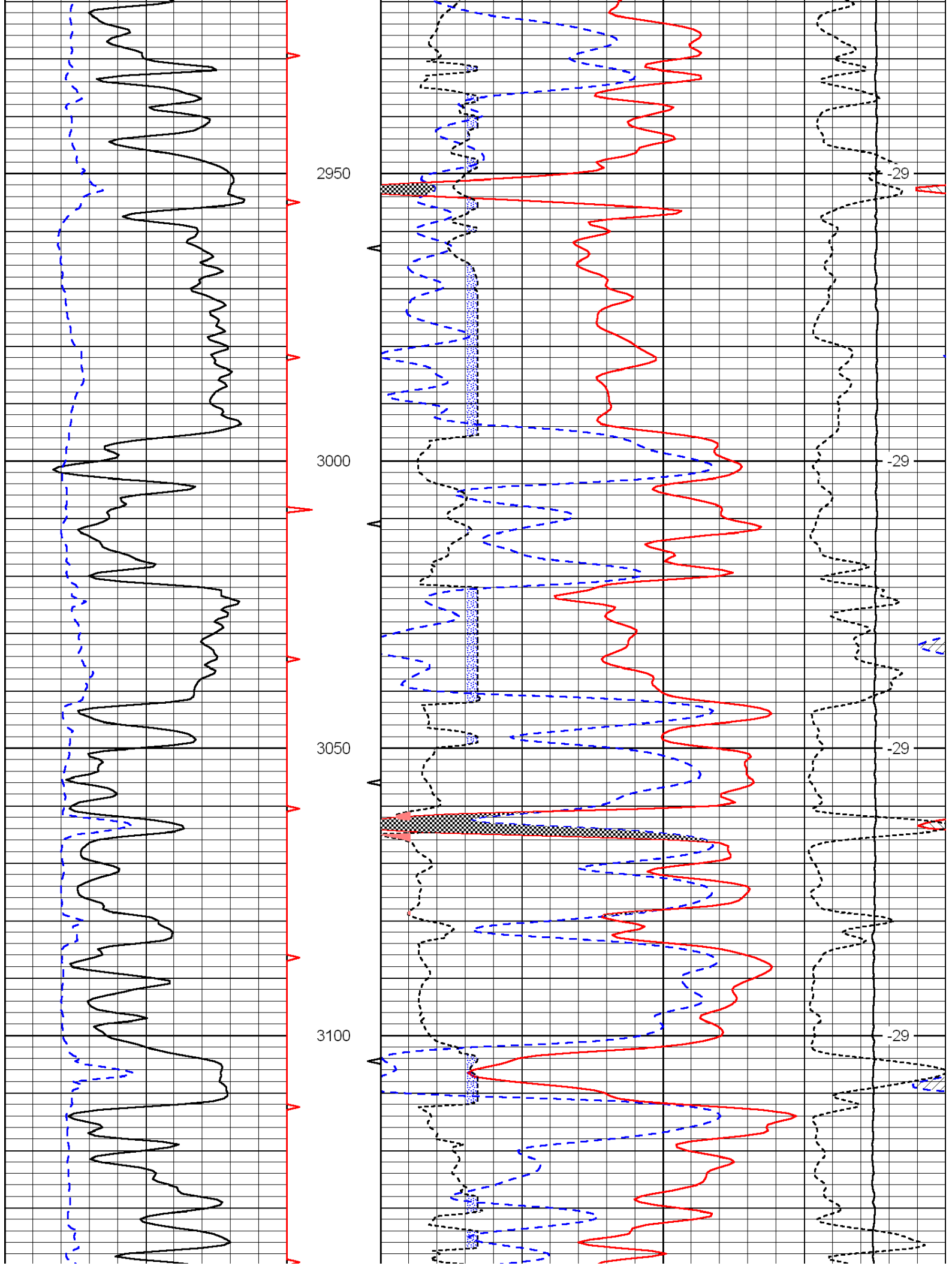


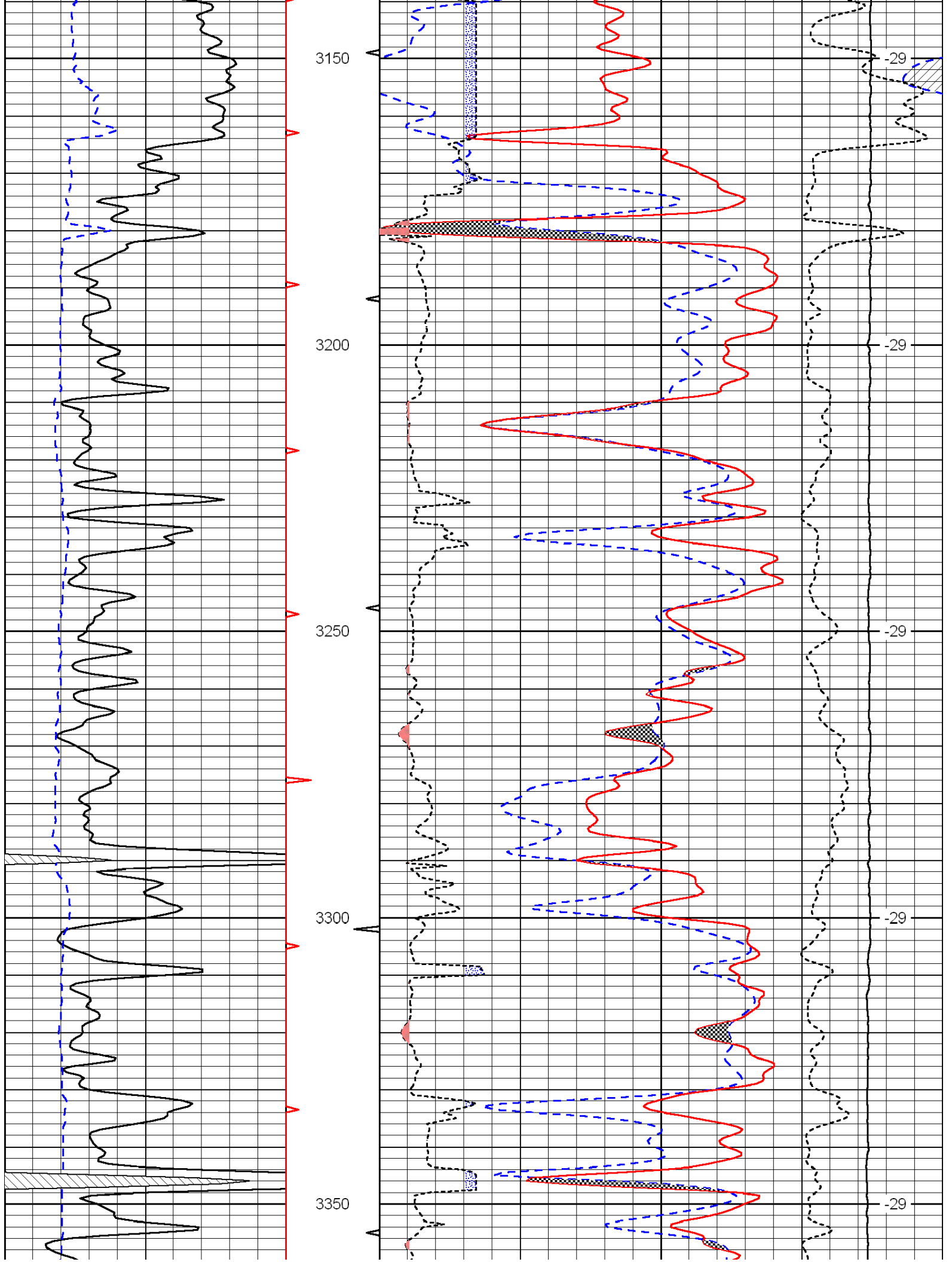


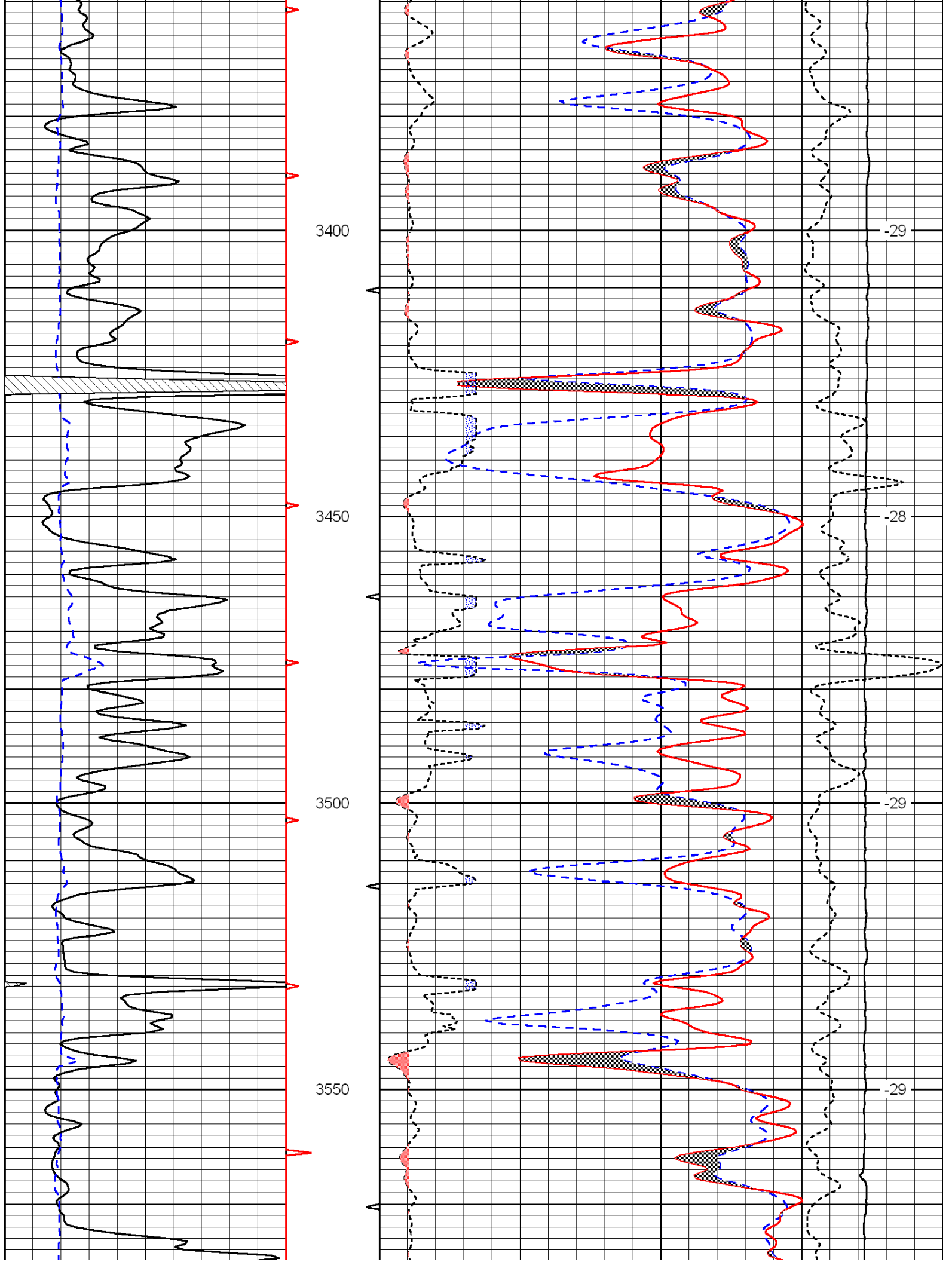


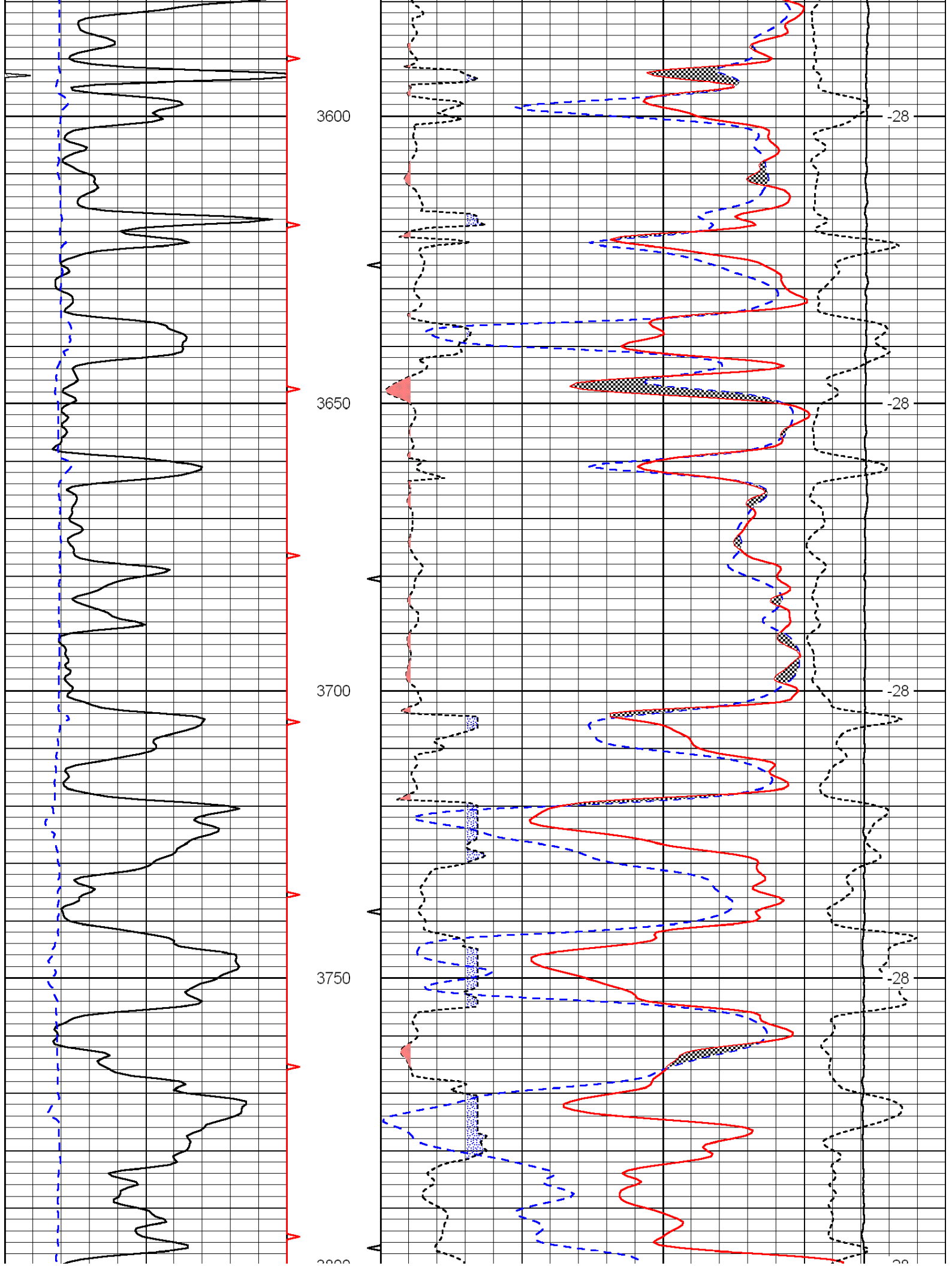
Database File: c:\warrior\data\meridian\_triumph trust no. 1\meridianhd.db  
 Dataset Pathname: dil/merstck  
 Presentation Format: cndlspec  
 Dataset Creation: Mon Oct 25 02:11:12 2010  
 Charted by: Depth in Feet scaled 1:240

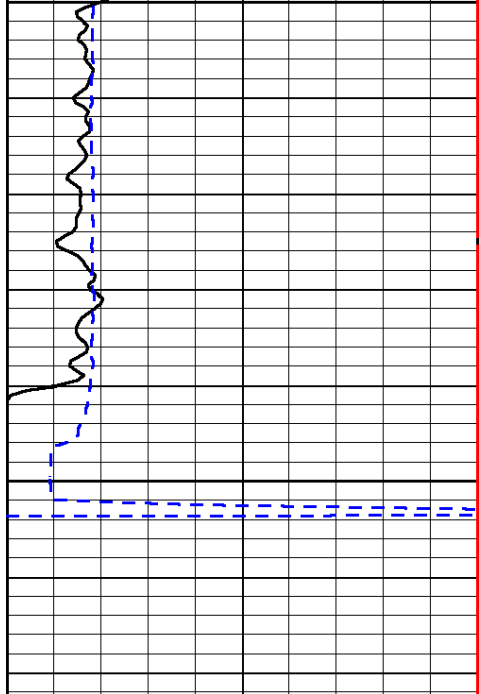




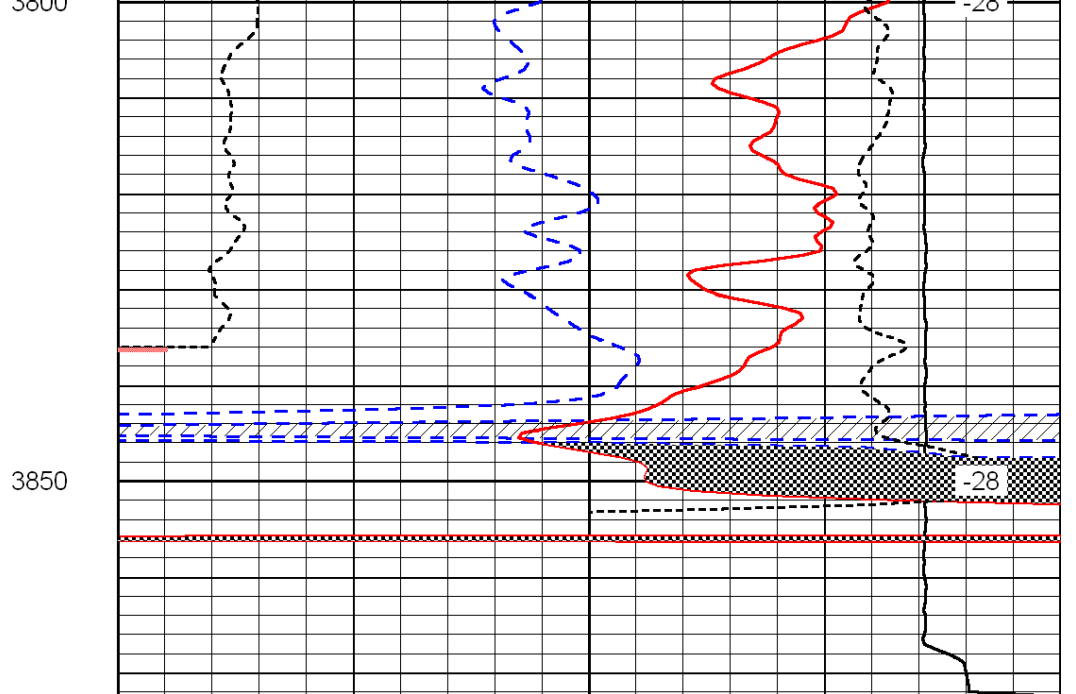








0	Gamma Ray	150
6	Caliper (GAPI)	16



30	Compensated Neutron (Limestone)	-10			
30	Compensated Density (2.71 ma)	-10			
2.625	DGA	3.425	-0.25	Correction	0.25
15000	Line Tension	0			

LSPD