



# Microresistivity Log

**DIGITAL LOG** (785) 625-3858

API No.	15-159-22,616-00-00		
Company	American Warrior, Inc.		
Well	Link-Beneke No.1-13		
Field	Chase-Silica		
County	Rice	State	Kansas
Location	2310' FSL & 2600' FEL		
Sec: 13	Twp: 19S	Rge: 10W	Other Services CNL/CDL DIL
Permanent Datum	Ground Level	Elevation	Elevation
Log Measured From	Kelly Bushing	1749	K.B. 1757
Drilling Measured From	Kelly Bushing	8 Ft. Above Perm. Datum	D.F. 1749

Date	10/10/2010
Run Number	Two
Depth Driller	3380
Depth Logger	3382
Bottom Logged Interval	3381
Top Log Interval	2600
Casing Driller	8.625 @ 313
Casing Logger	308
Bit Size	7.875
Type Fluid in Hole	Chemical
Salinity, ppm CL	5.700
Density / Viscosity	9.4   54
pH / Fluid Loss	11.0   9.2
Source of Sample	Flowline
Rm @ Meas. Temp	.4 @ 72
Rmf @ Meas. Temp	.3 @ 72
Rmc @ Meas. Temp	.54 @ 72
Source of Rmf / Rmc	Charts
Rm @ BHT	.26 @ 112
Operating Rig Time	3 1/2 Hours
Max Rec. Temp. F	112
Equipment Number	4
Location	Hays
Recorded By	C. Desaire
Witnessed By	Josh Austin

<<< Fold Here >>>

All interpretations are opinions based on inferences from electrical or other measurements and we cannot and do not guarantee the accuracy or correctness of any interpretation, and we shall not, except in the case of gross or willful negligence on our part, be liable or responsible for any loss, costs, damages, or expenses incurred or sustained by anyone resulting from any interpretation made by any of our officers, agents or employees. These interpretations are also subject to our general terms and conditions set out in our current Price Schedule.

### Comments

Thank you for using Log-Tech, Inc.  
(785) 625-3858

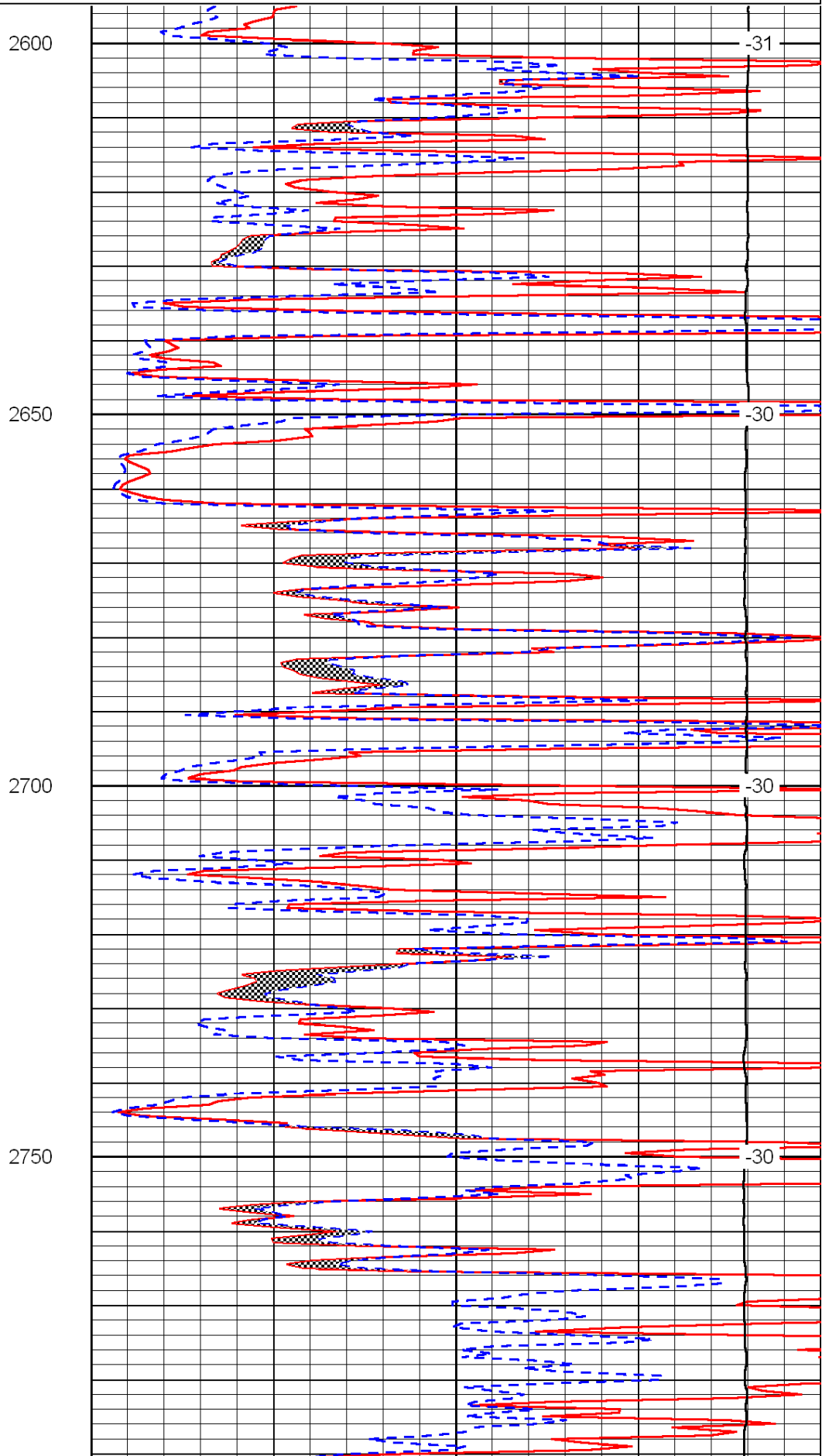
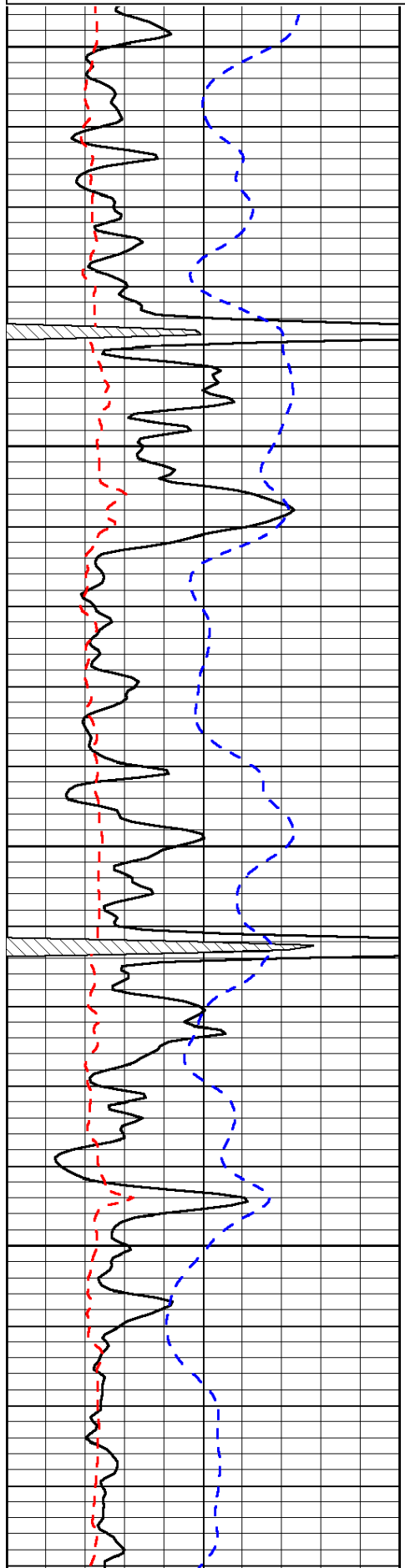
Chase, 1 W,  
4 1/2 N, W Into

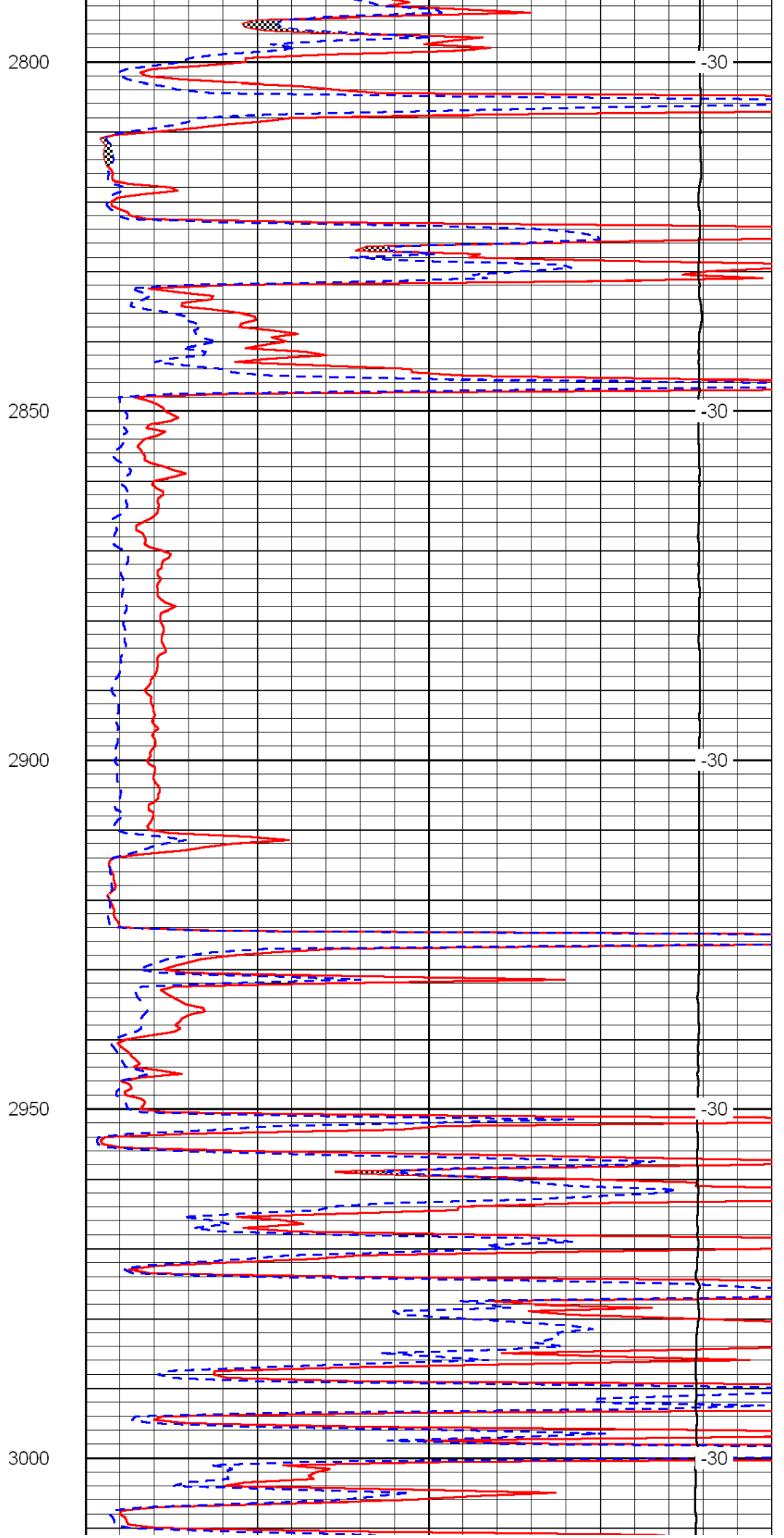
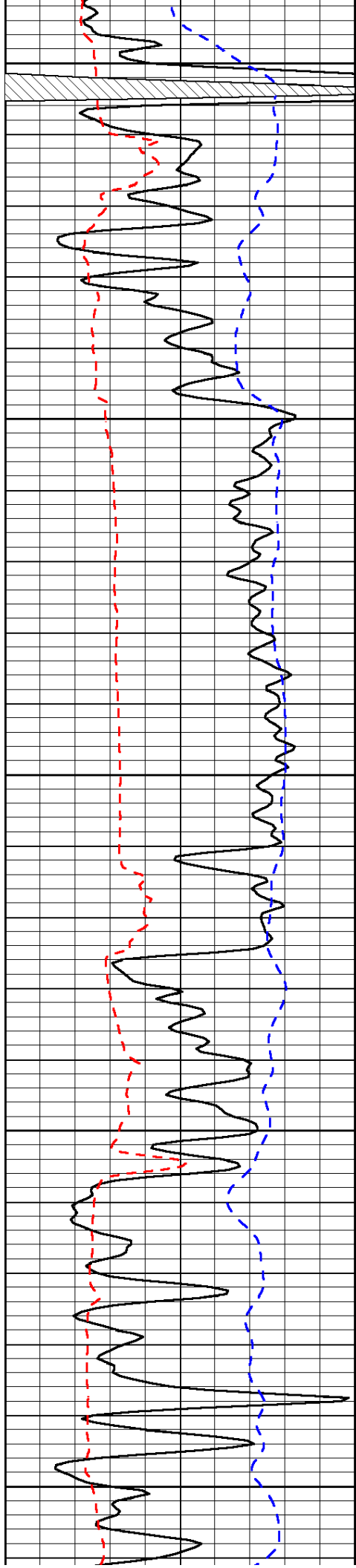
Database File: c:\warrior\data\amwar\_link-beneke no.1-13\amwrhd.db  
 Dataset Pathname: dil/amwrstk  
 Presentation Format: micro  
 Dataset Creation: Sun Oct 10 23:13:09 2010  
 Charted by: Depth in Feet scaled 1:240

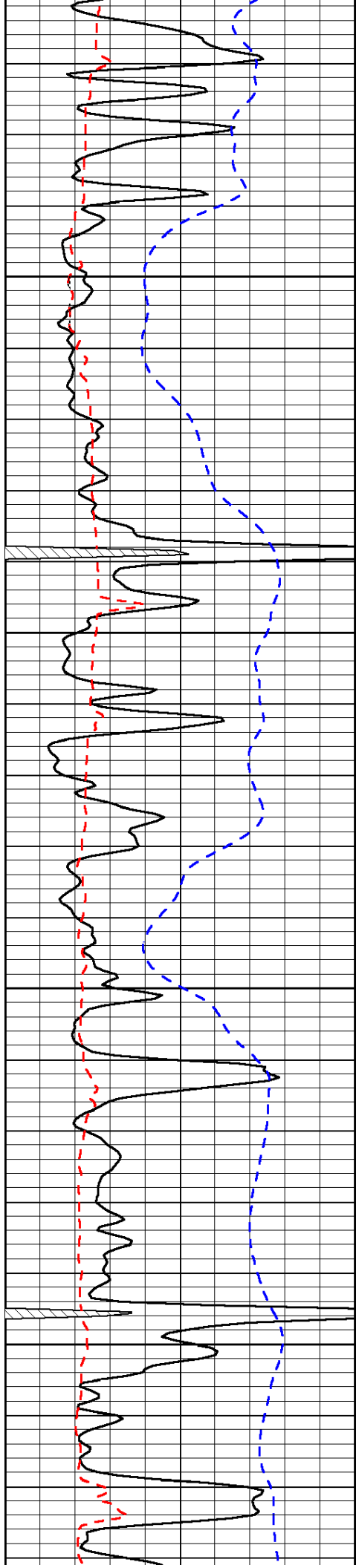
0	Gamma Ray	150
6	Micro Log Caliper (GAPI)	16
-200	SP (mV)	0

0	Micro Inverse 1 X 1	40
0	Micro Normal 2"	40
15000	Line Weight	0

LSPD





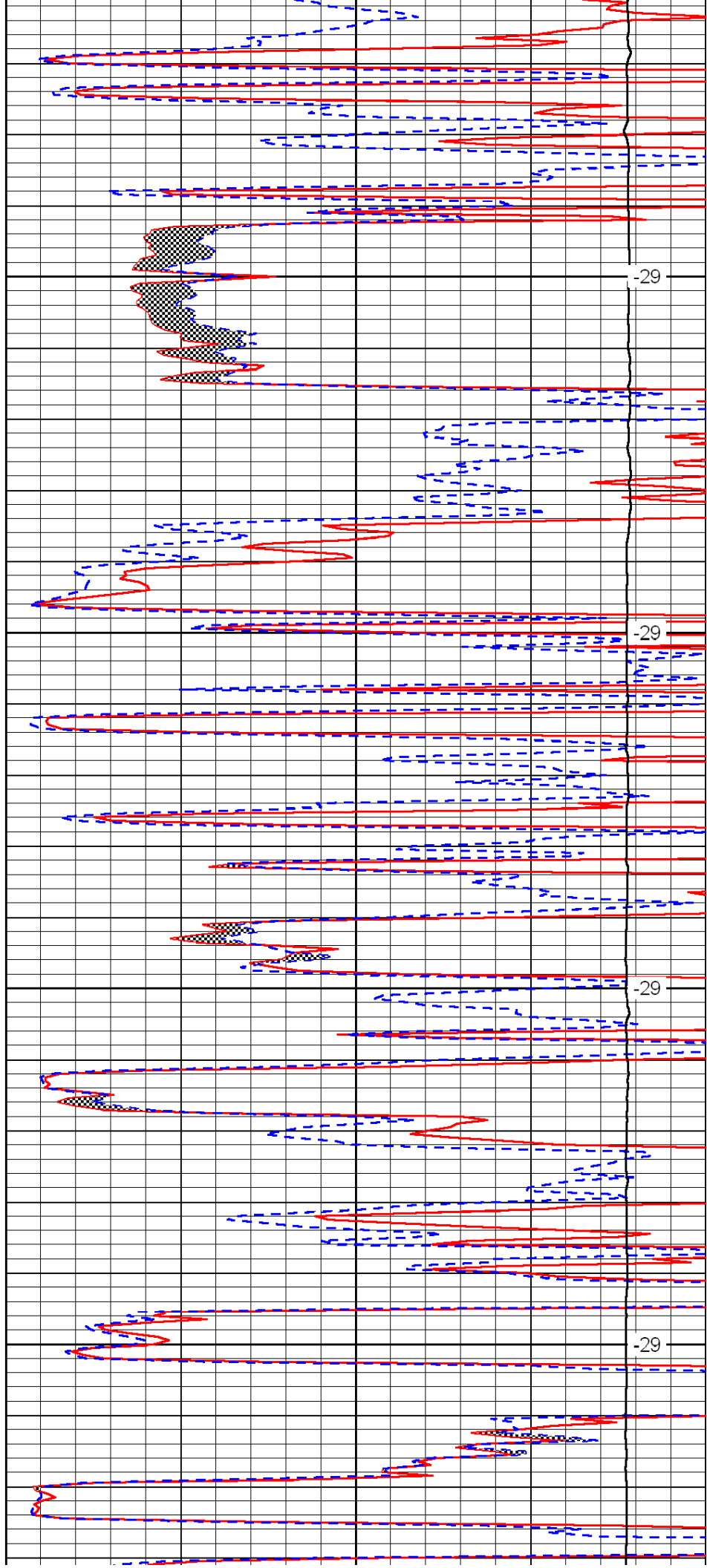


3050

3100

3150

3200

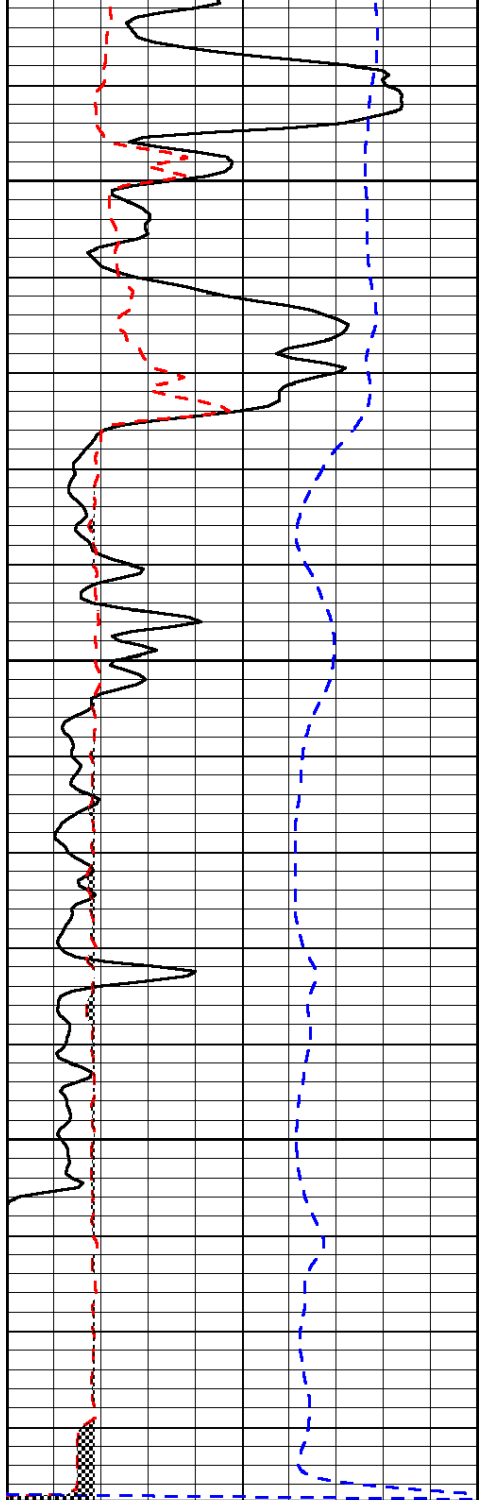


-29

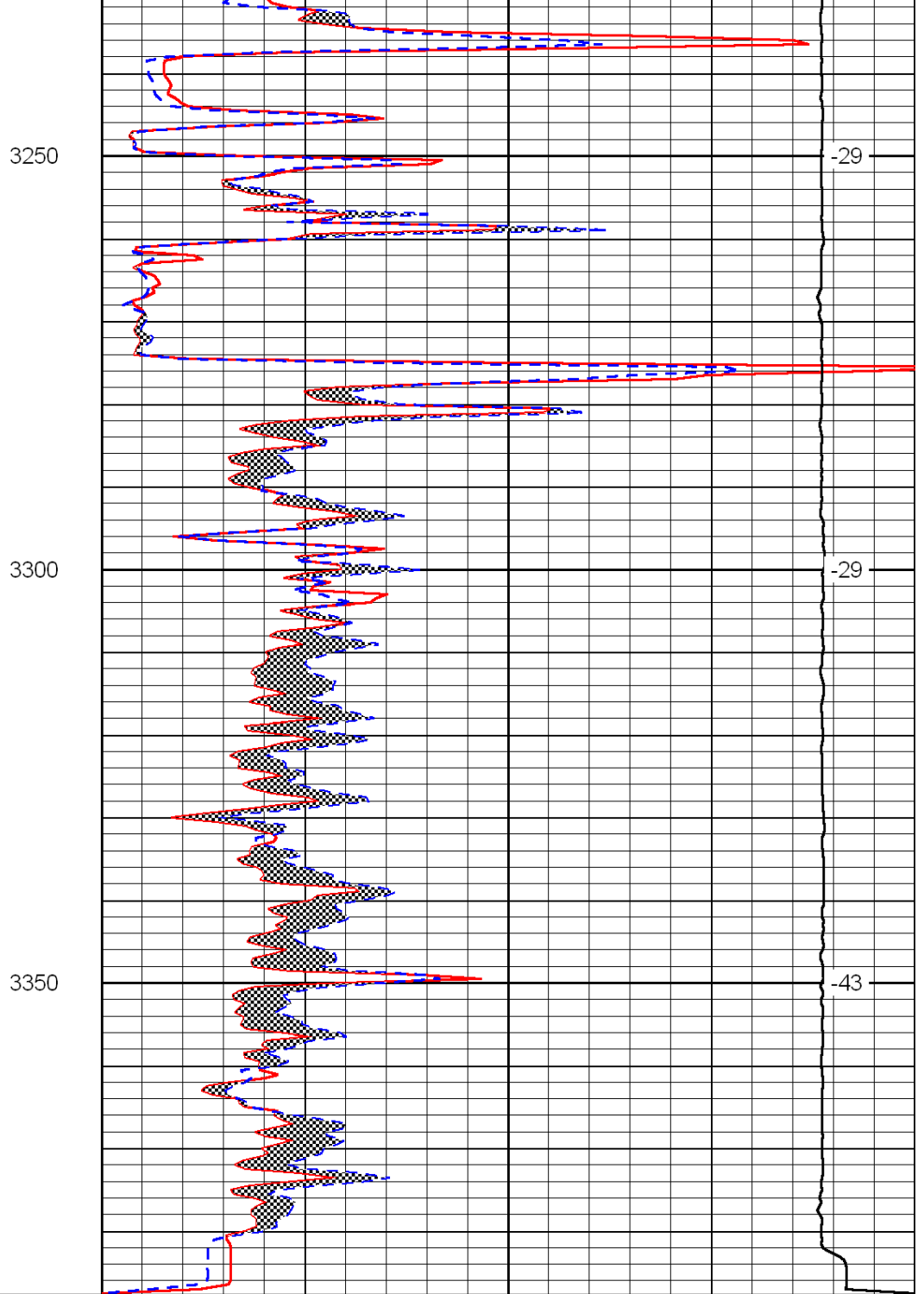
-29

-29

-29



0	Gamma Ray	150
6	Micro Log Caliper (GAPI)	16
-200	SP (mV)	0



0	Micro Inverse 1 X 1	40
0	Micro Normal 2''	40
15000	Line Weight	0

LSPD