



DIGITAL LOG (785) 625-3858

Dual Induction Log

API No.	15-159-22,616-00-00		
Company	American Warrior, Inc.		
Well	Link-Beneke No.1-13		
Field	Chase-Silica		
County	Rice	State	Kansas
Location	2310' FSL & 2600' FEL		
Sec: 13	Twp: 19S	Rge: 10W	Other Services CNL/CDL MEL
Permanent Datum	Ground Level	Elevation	K.B. 1757
Log Measured From	Kelly Bushing	8 Ft. Above Perm. Datum	D.F. 1749
Drilling Measured From	Kelly Bushing		G.L. 1749

Date	10/10/2010
Run Number	One
Depth Driller	3380
Depth Logger	3382
Bottom Logged Interval	3381
Top Log Interval	300
Casing Driller	8.625 @ 313
Casing Logger	308
Bit Size	7.875
Type Fluid in Hole	Chemical
Salinity, ppm CL	5.700
Density / Viscosity	9.4 54
pH / Fluid Loss	11.0 9.2
Source of Sample	Flowline
Rm @ Meas. Temp	.4 @ 72
Rmf @ Meas. Temp	.3 @ 72
Rmc @ Meas. Temp	.54 @ 72
Source of Rmf / Rmc	Charts
Rm @ BHT	.26 @ 112
Operating Rig Time	3 1/2 Hours
Max Rec. Temp. F	112
Equipment Number	4
Location	Hays
Recorded By	C. Desaire
Witnessed By	Josh Austin

<<< Fold Here >>>

All interpretations are opinions based on inferences from electrical or other measurements and we cannot and do not guarantee the accuracy or correctness of any interpretation, and we shall not, except in the case of gross or willful negligence on our part, be liable or responsible for any loss, costs, damages, or expenses incurred or sustained by anyone resulting from any interpretation made by any of our officers, agents or employees. These interpretations are also subject to our general terms and conditions set out in our current Price Schedule.

Comments

Thank you for using Log-Tech, Inc.
 (785) 625-3858

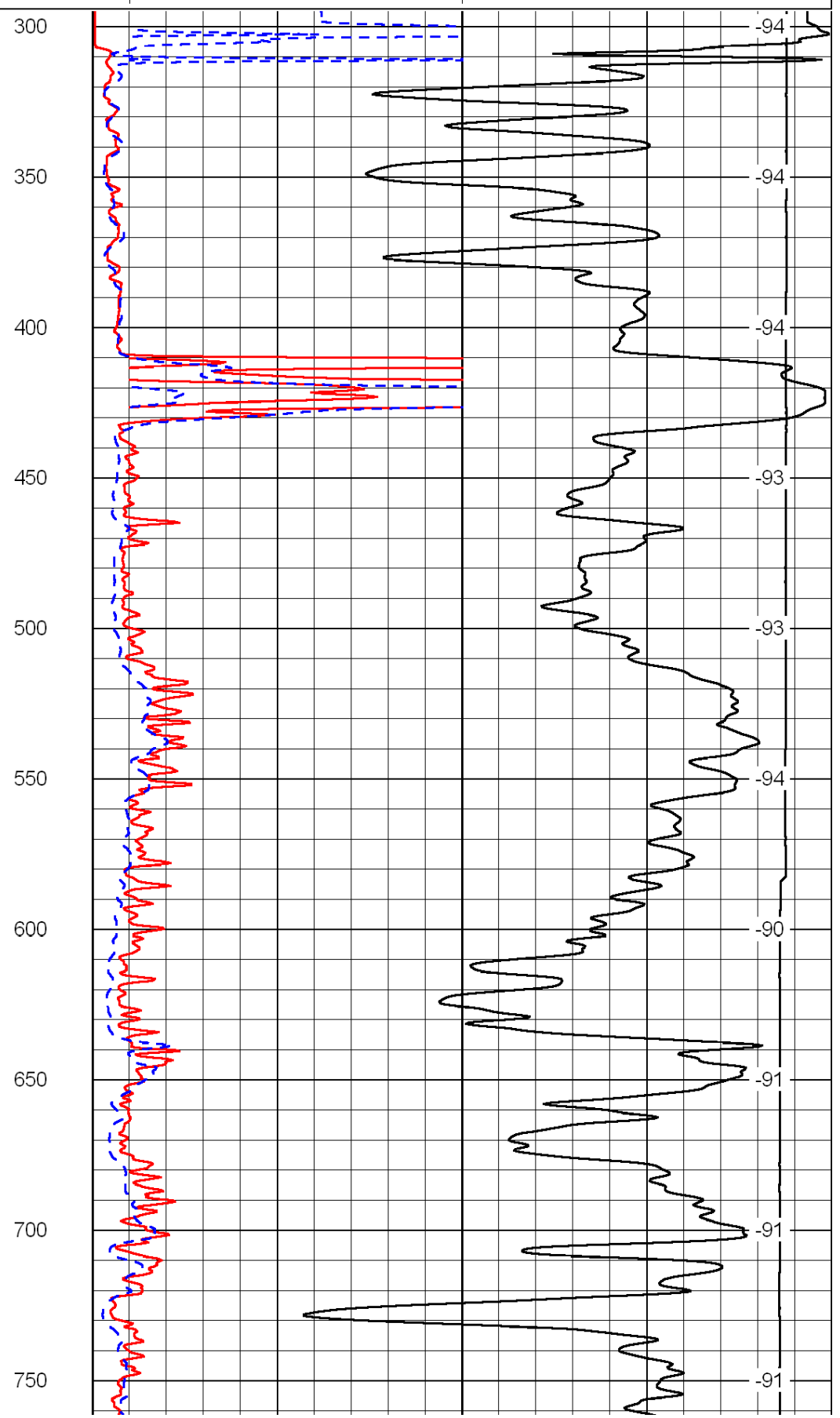
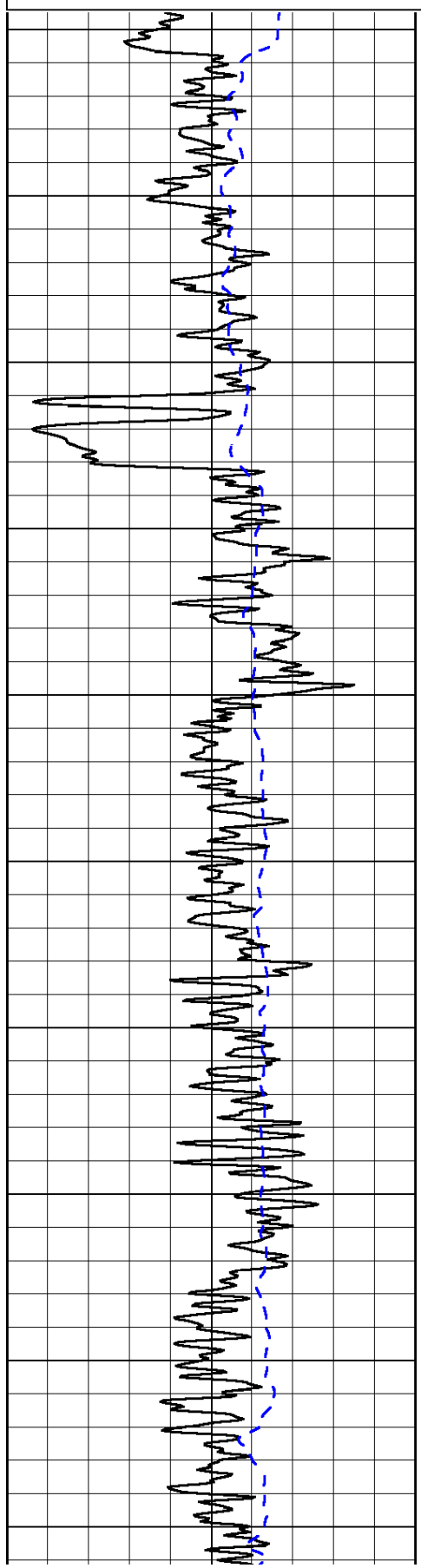
 Chase, 1 W,
 4 1/2 N, W Into

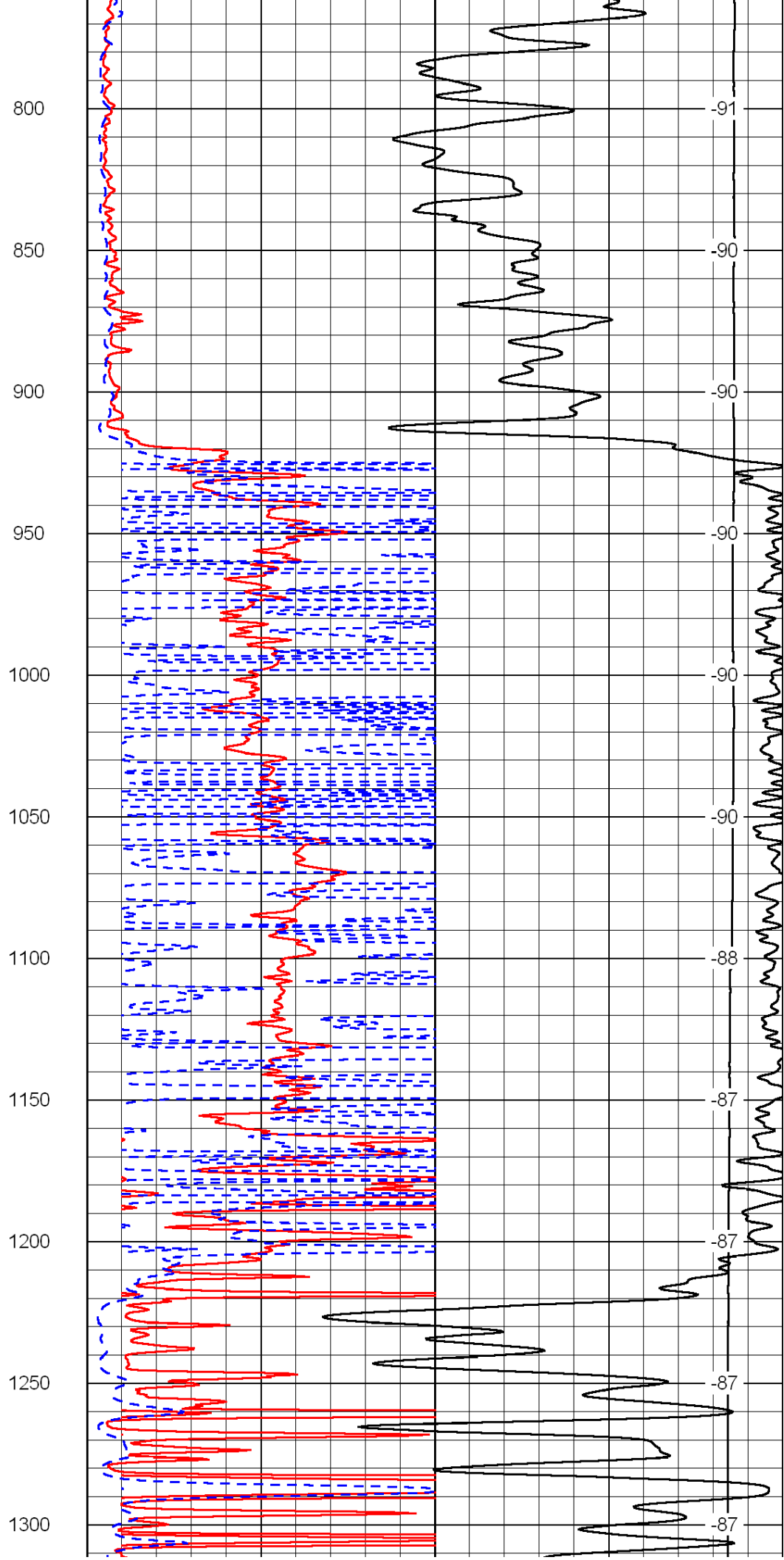
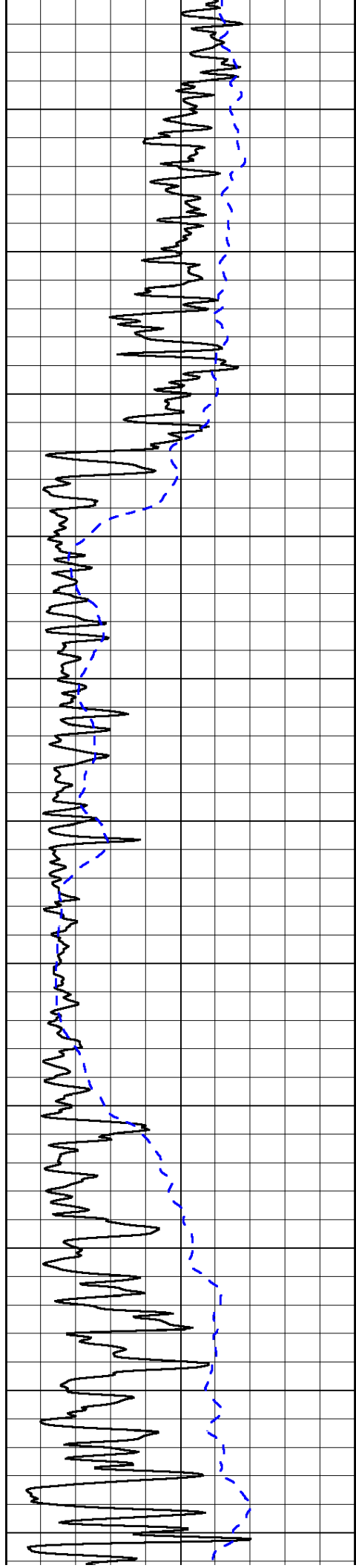
Database File: c:\warrior\data\amwar_link-beneke no.1-13\amwrhd.db
 Dataset Pathname: dil/amwrstk
 Presentation Format: dil2in
 Dataset Creation: Sun Oct 10 23:13:09 2010
 Charted by: Depth in Feet scaled 1:600

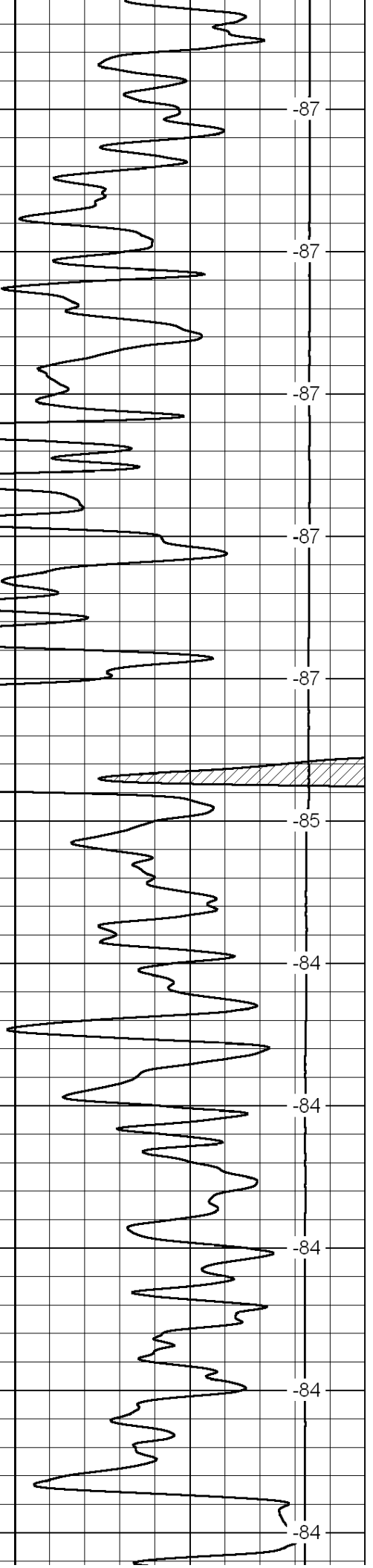
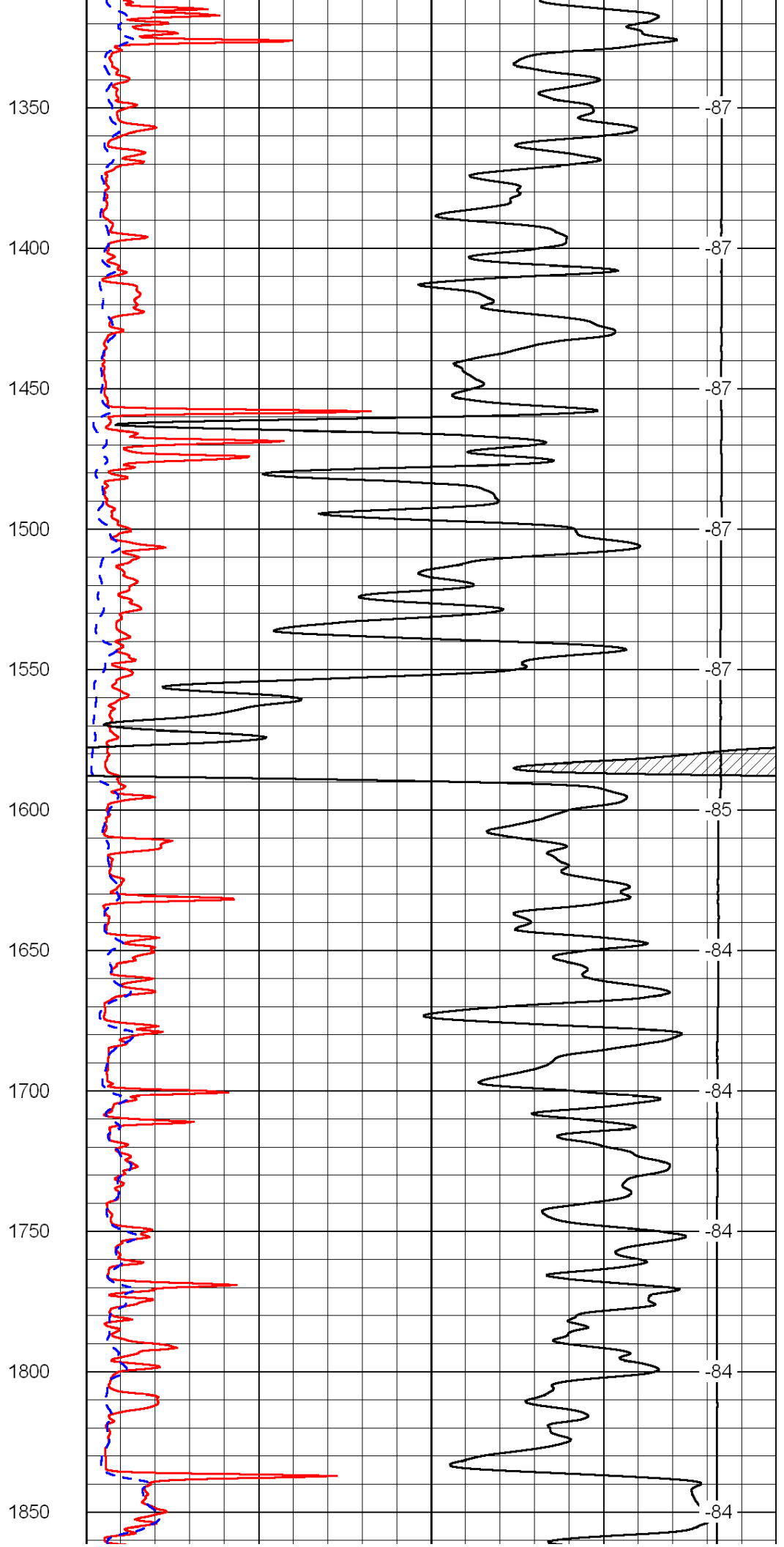
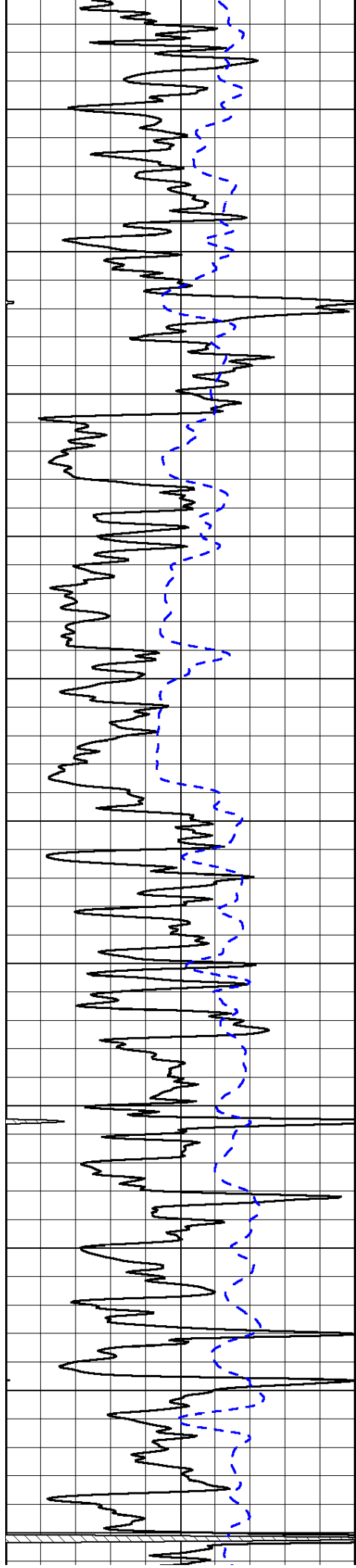
0	Gamma Ray	150
-200	SP (mV)	0

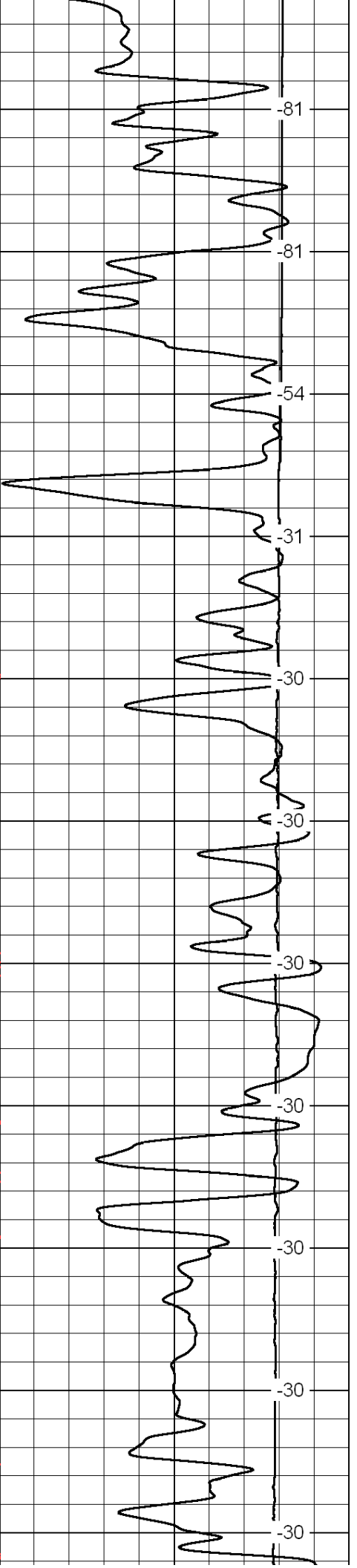
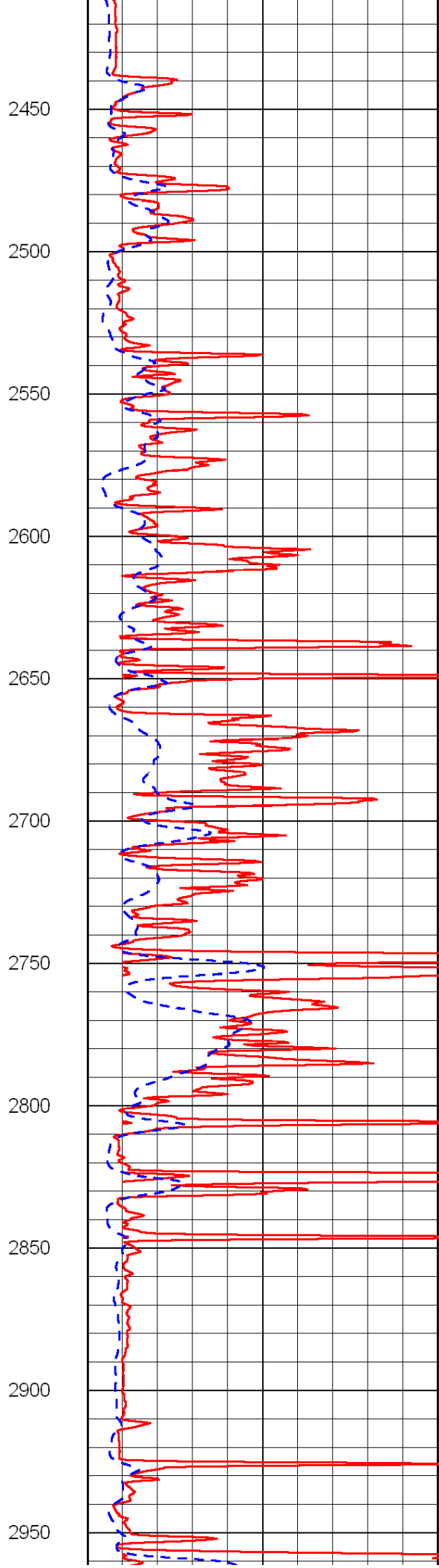
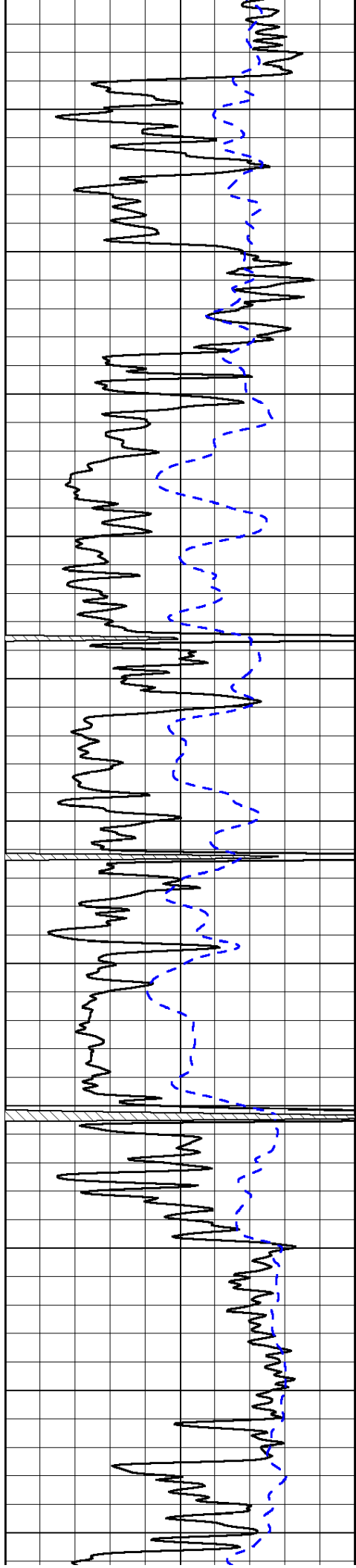
0	Shallow Resistivity	50
0	Deep Resistivity	50
1000	Conductivity	0
15000	Line Tension	0
50	Shallow Resistivity	500
50	Deep Resistivity	500

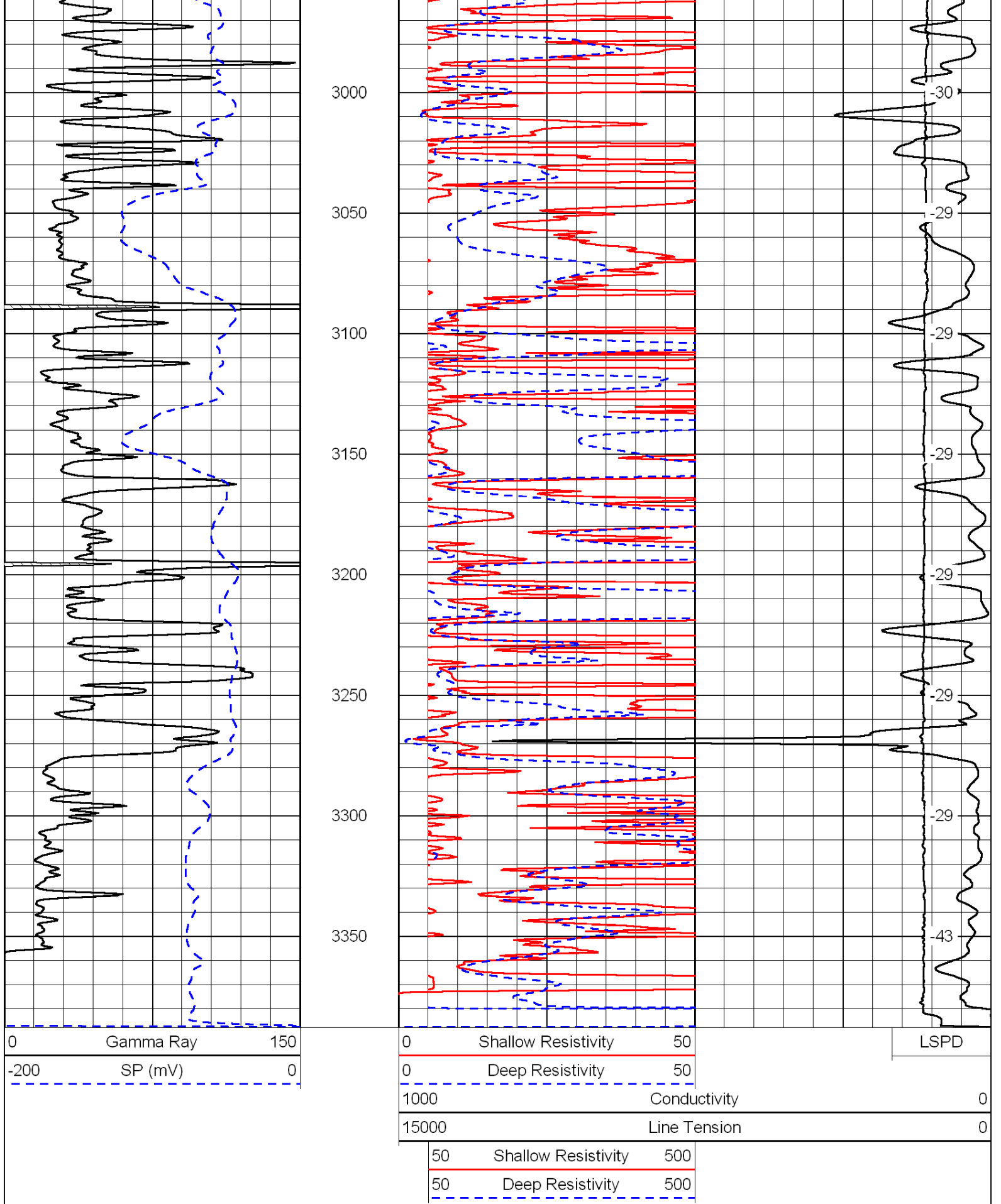
LSPD











Database File: c:\warrior\data\amwar_link-beneke no.1-13\amwrhd.db
 Dataset Pathname: dil/amwrstk
 Presentation Format: dil
 Dataset Creation: Sun Oct 10 23:13:09 2010

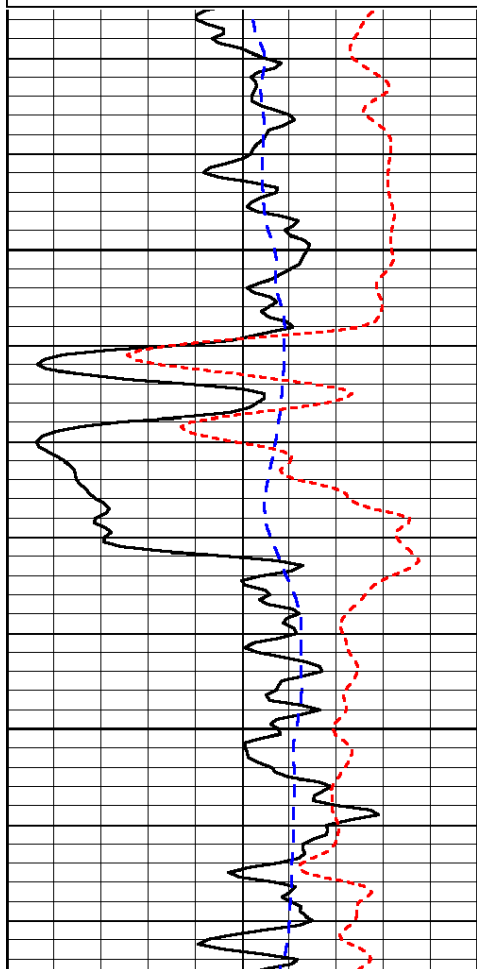
Charted by:

Depth in Feet scaled 1:240

0	Gamma Ray	150
-200	SP (mV)	0
-160	Rxo / Rt	40

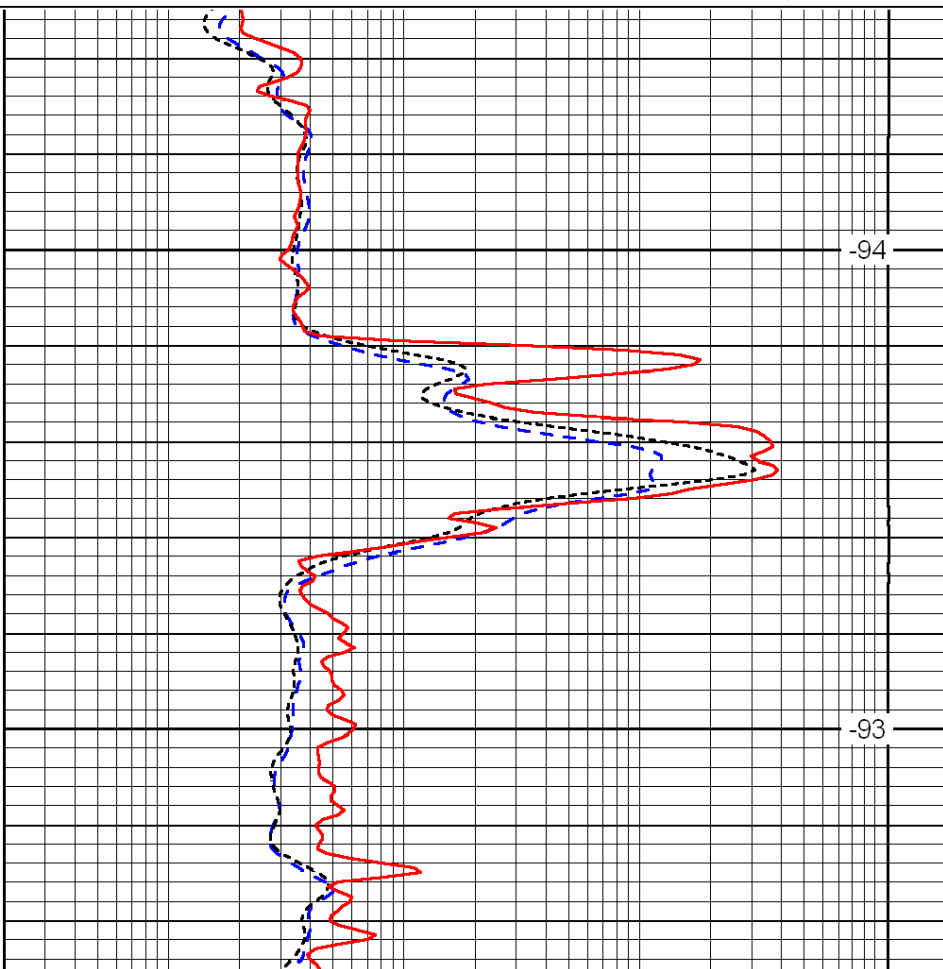
0.2	Deep Resistivity	2000
0.2	Medium Resistivity	2000
0.2	Shallow Resistivity	2000
15000	Line Tension	0

LSPD



400

450



-94

-93

0	Gamma Ray	150
-200	SP (mV)	0
-160	Rxo / Rt	40

0.2	Deep Resistivity	2000
0.2	Medium Resistivity	2000
0.2	Shallow Resistivity	2000
15000	Line Tension	0

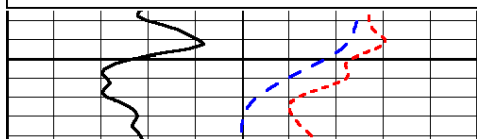
LSPD

Database File: c:\warrior\data\amwar_link-beneke no.1-13\amwrhd.db
 Dataset Pathname: dil/amwrstk
 Presentation Format: dil
 Dataset Creation: Sun Oct 10 23:13:09 2010
 Charted by: Depth in Feet scaled 1:240

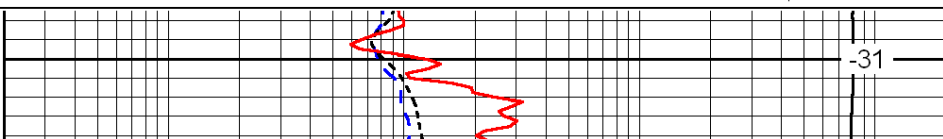
0	Gamma Ray	150
-200	SP (mV)	0
-160	Rxo / Rt	40

0.2	Deep Resistivity	2000
0.2	Medium Resistivity	2000
0.2	Shallow Resistivity	2000
15000	Line Tension	0

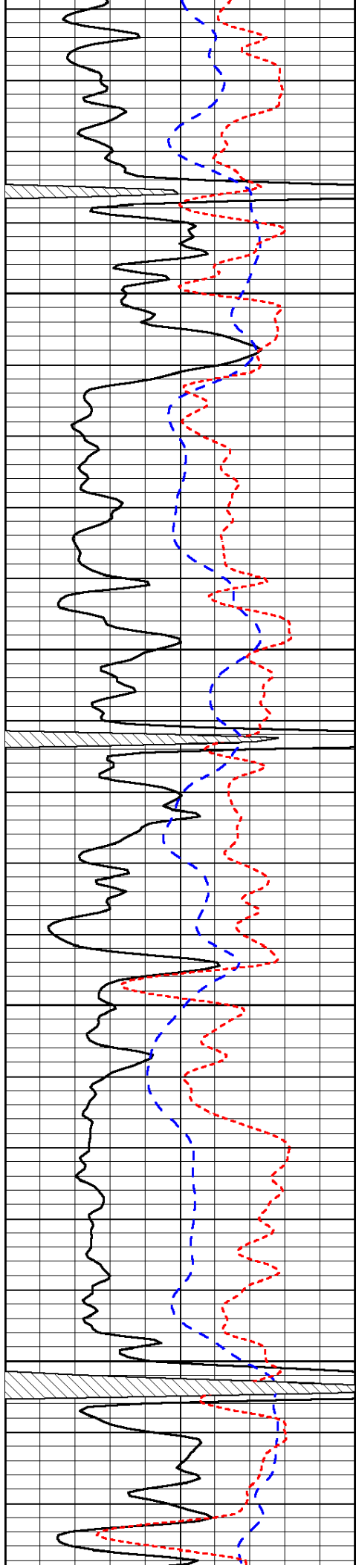
LSPD



2600



-31

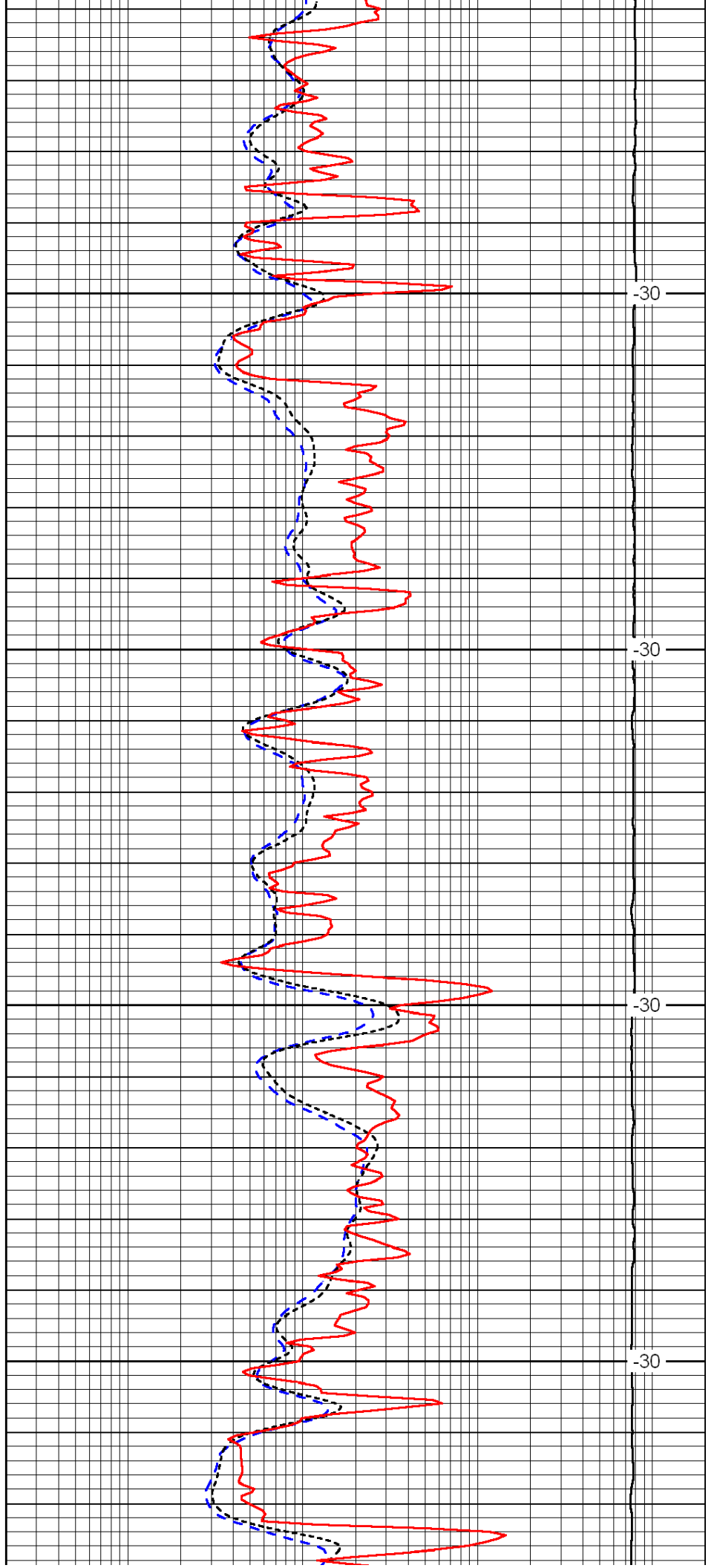


2650

2700

2750

2800

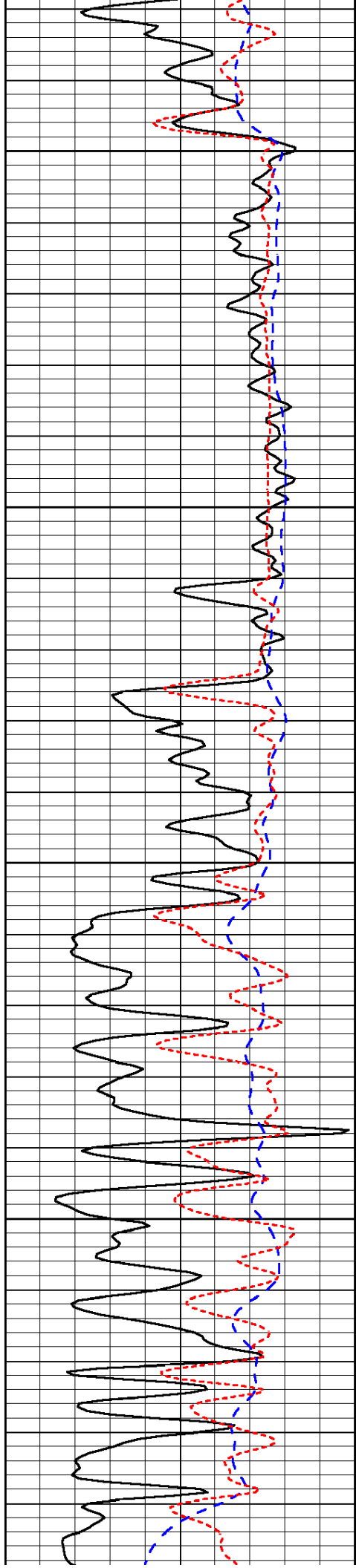


-30

-30

-30

-30

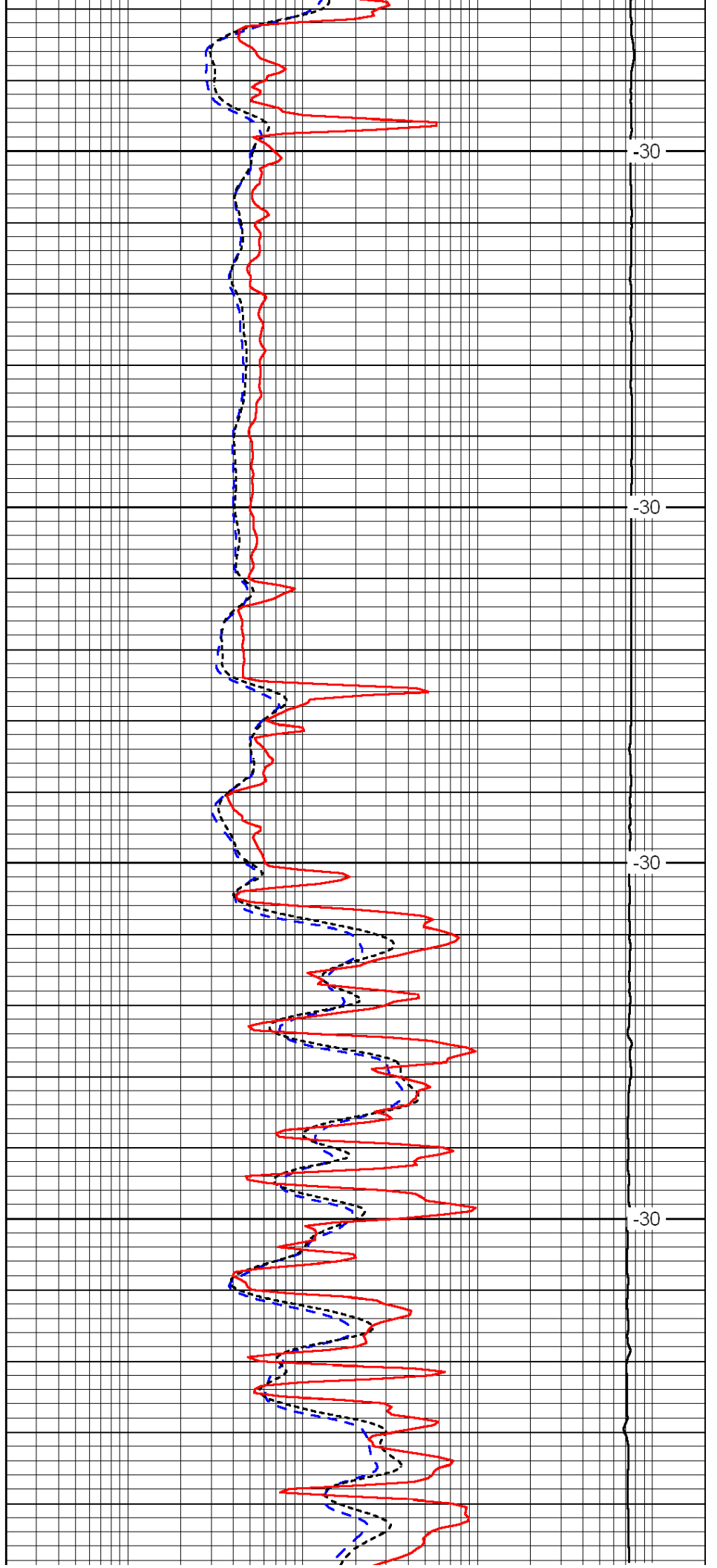


2850

2900

2950

3000

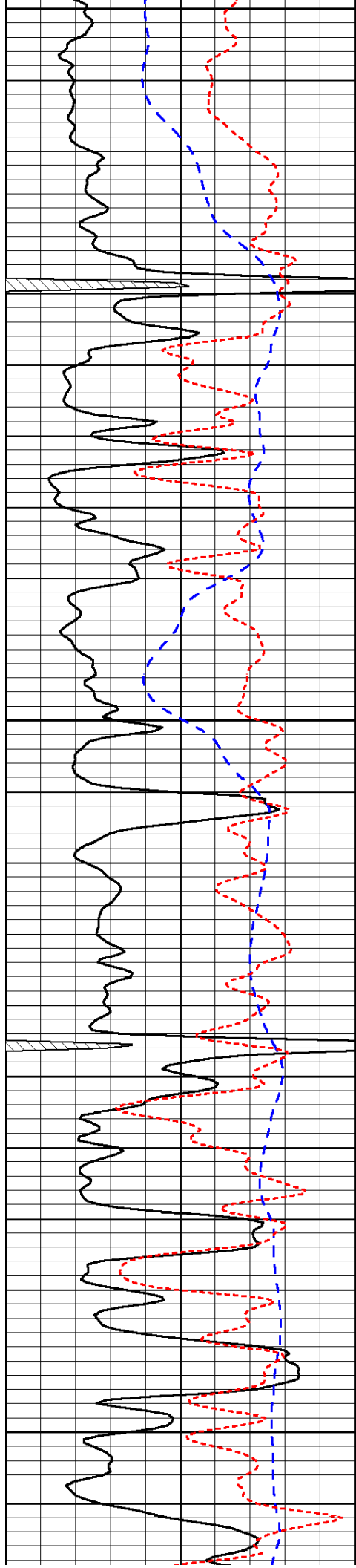


-30

-30

-30

-30



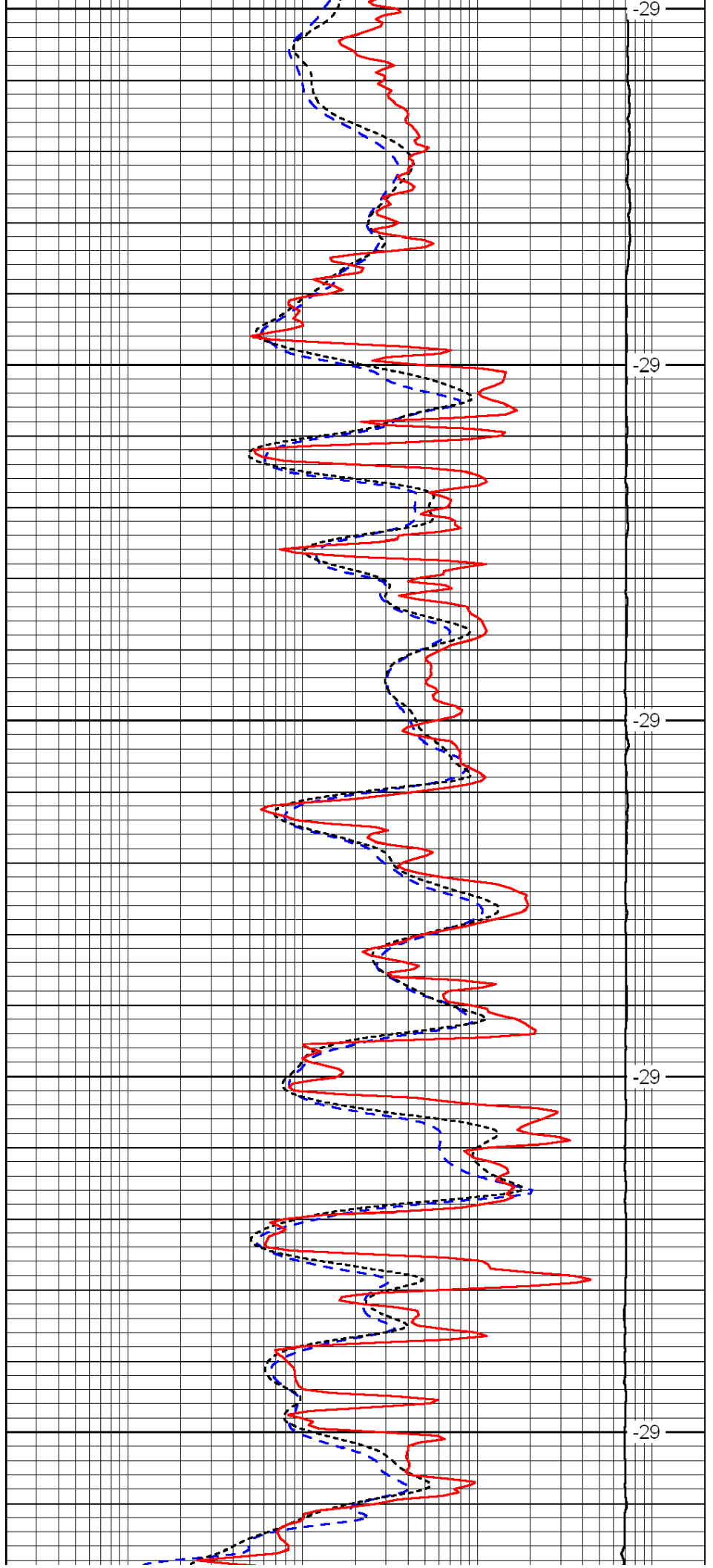
3050

3100

3150

3200

3250



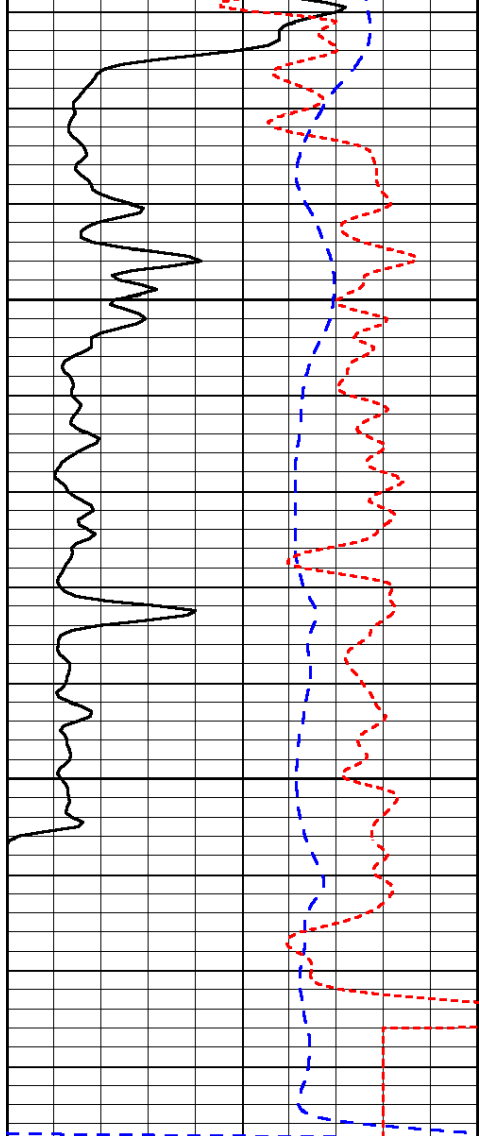
-29

-29

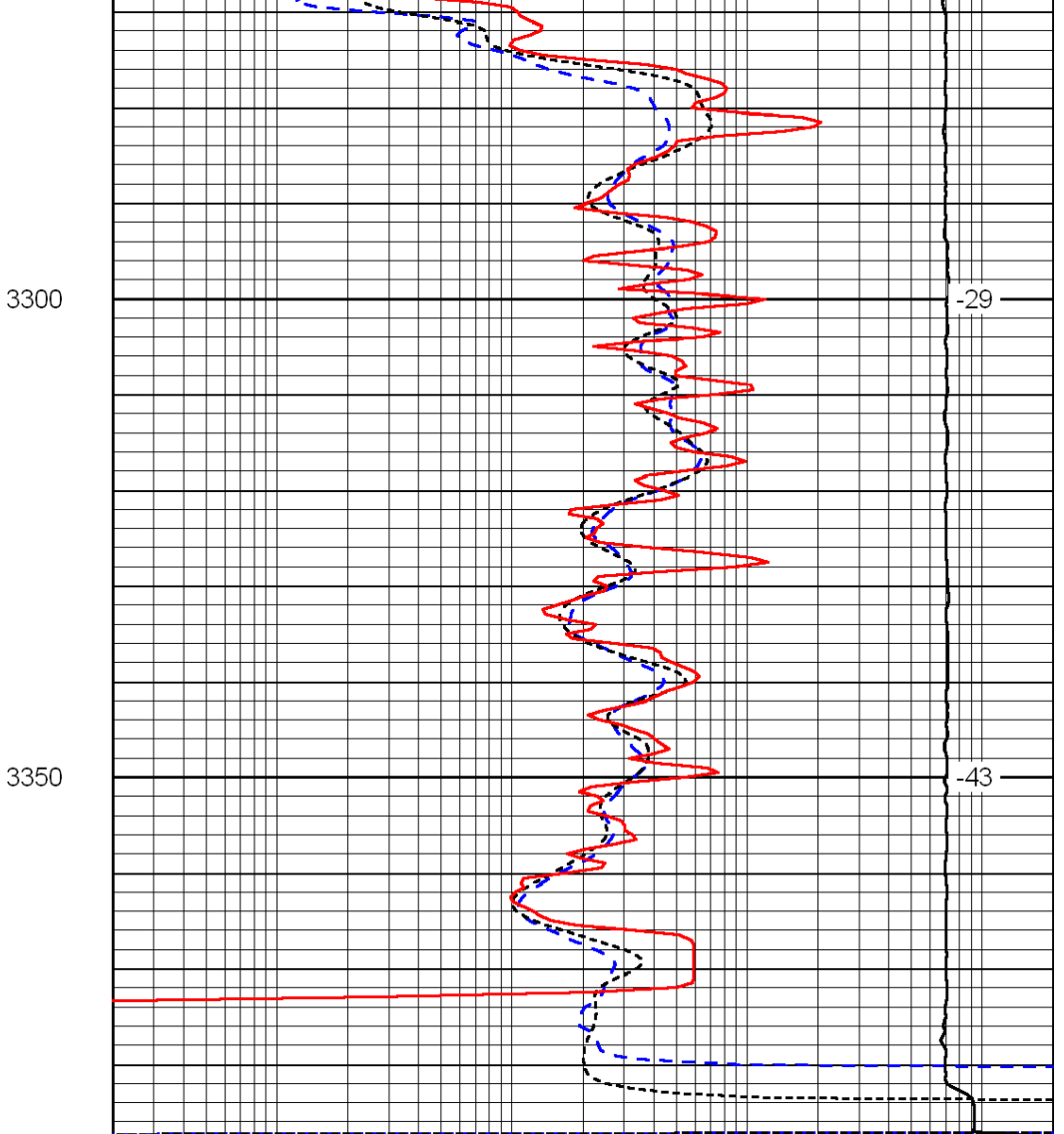
-29

-29

-29



0	Gamma Ray	150
-200	SP (mV)	0
-160	Rxo / Rt	40



0.2	Deep Resistivity	2000
0.2	Medium Resistivity	2000
0.2	Shallow Resistivity	2000
15000	Line Tension	0

LSPD