



DIGITAL LOG (785) 625-3858

Dual Induction Log

API No.	15-135-25,172-00-00		
Company	DaMar Resources, Inc.		
Well	Petersilie Unit No. 1		
Field	Wildcat		
County	Ness	State	Kansas
Location	280' FNL & 1128' FWL		
Sec:	14	Twp:	20S Rge: 24W
Permanent Datum	Ground Level	Elevation	2330
Log Measured From	Kelly Bushing	5	Ft. Above Perm. Datum
Drilling Measured From	Kelly Bushing		
		Other Services	CNL/CDL MEL
		Elevation	K.B. 2335 D.F. 2330 G.L. 2330

Date	10/06/2010
Run Number	One
Depth Driller	4520
Depth Logger	4523
Bottom Logged Interval	4522
Top Log Interval	750
Casing Driller	8.625 @ 772
Casing Logger	768
Bit Size	7.875
Type Fluid in Hole	Chemical
Salinity, ppm CL	5.000
Density / Viscosity	9.2 50
pH / Fluid Loss	8.0 10.4
Source of Sample	Flowline
Rm @ Meas. Temp	1.3 @ 68
Rmf @ Meas. Temp	.98 @ 68
Rmc @ Meas. Temp	1.76 @ 68
Source of Rmf / Rmc	Charts
Rm @ BHT	.72 @ 123
Operating Rig Time	3 Hours
Max Rec. Temp. F	123
Equipment Number	17
Location	Hays
Recorded By	Mike Garrison
Witnessed By	Jim Musgrove

<<< Fold Here >>>

All interpretations are opinions based on inferences from electrical or other measurements and we cannot and do not guarantee the accuracy or correctness of any interpretation, and we shall not, except in the case of gross or willful negligence on our part, be liable or responsible for any loss, costs, damages, or expenses incurred or sustained by anyone resulting from any interpretation made by any of our officers, agents or employees. These interpretations are also subject to our general terms and conditions set out in our current Price Schedule.

Comments

Thank you for using Log-Tech, Inc.
 (785) 625-3858

 Ness City, 9 South, 2.8 West, South Into

Database File: c:\warrior\data\damar_petersilie unit no. 1\damar_petersilie-1hd.db
 Dataset Pathname: dil\damarstock
 Presentation Format: dil2in
 Dataset Creation: Wed Oct 06 07:21:51 2010
 Charted by: Depth in Feet scaled 1:600

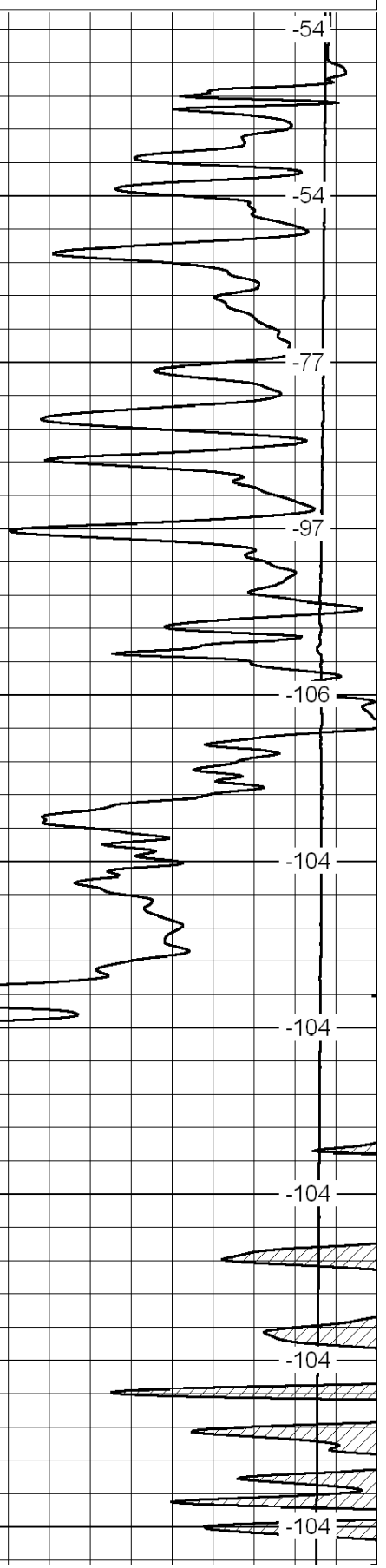
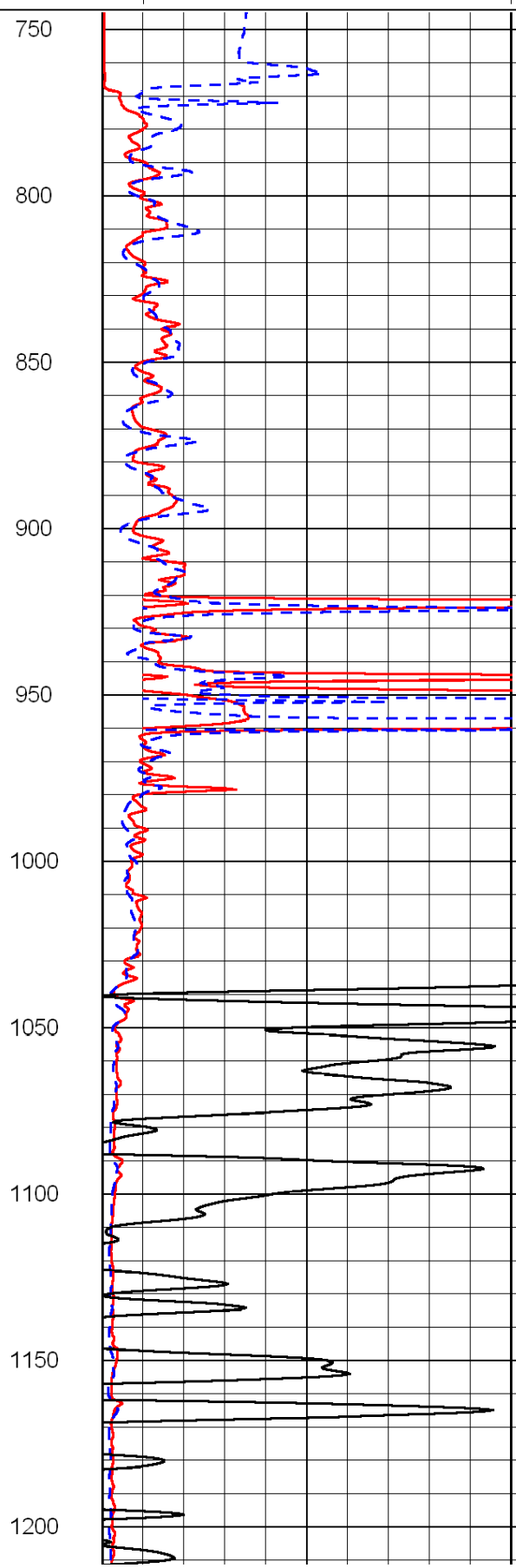
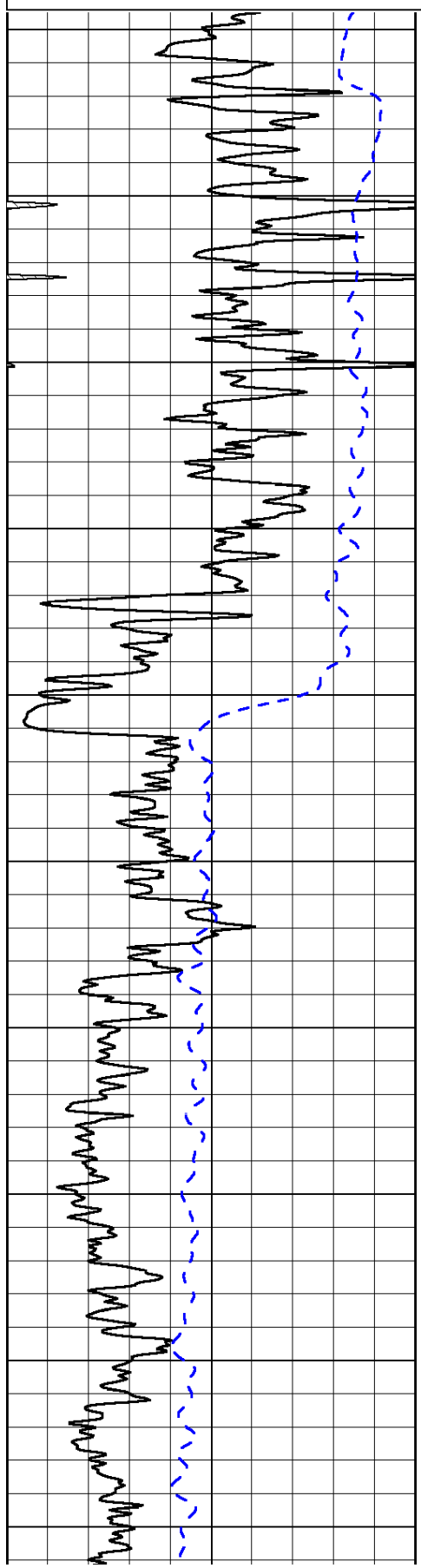
0	Gamma Ray	150
-200	SP (mV)	0

0	Shallow Resistivity	50
0	Deep Resistivity	50

LSPD

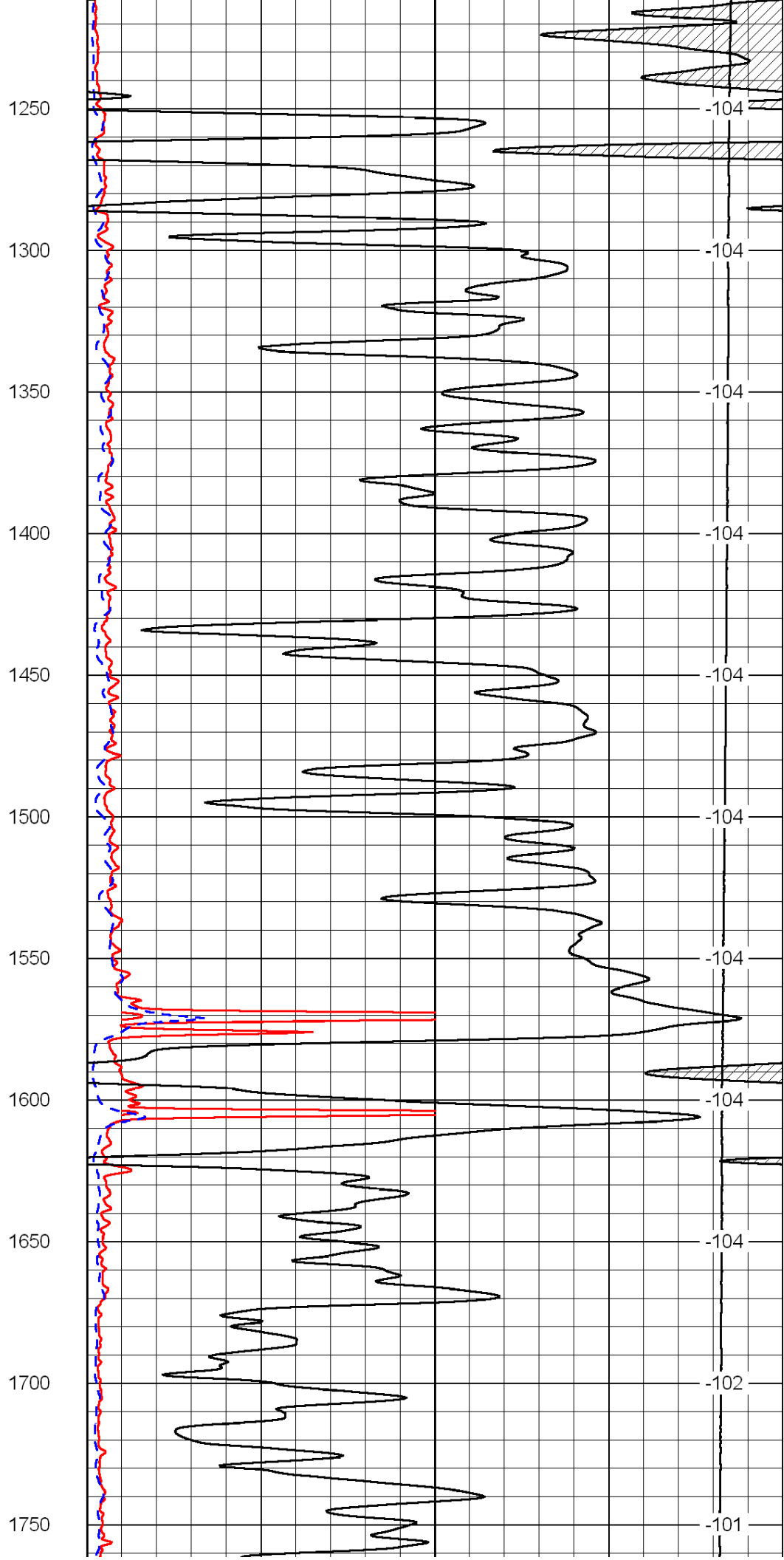
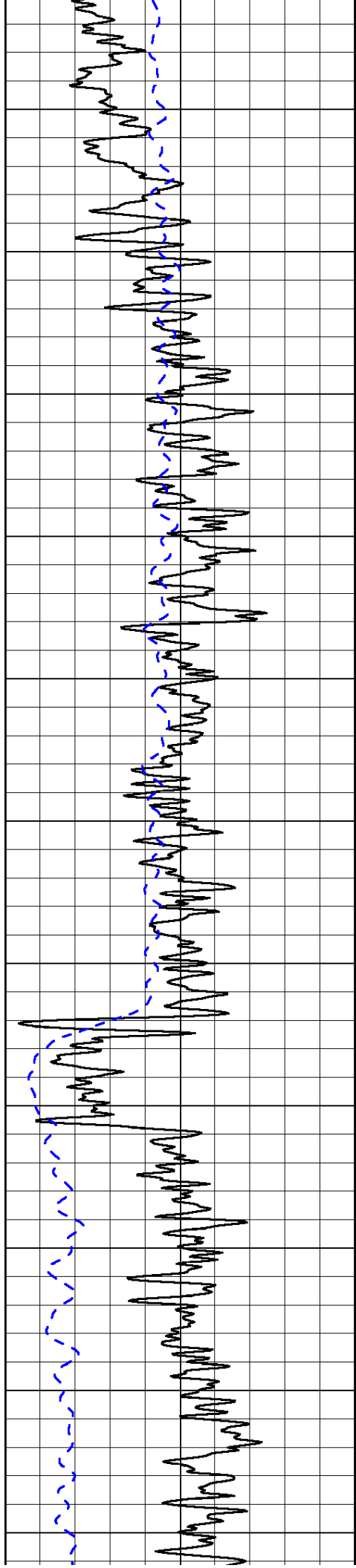
1000	Conductivity	0
15000	Line Tension	0

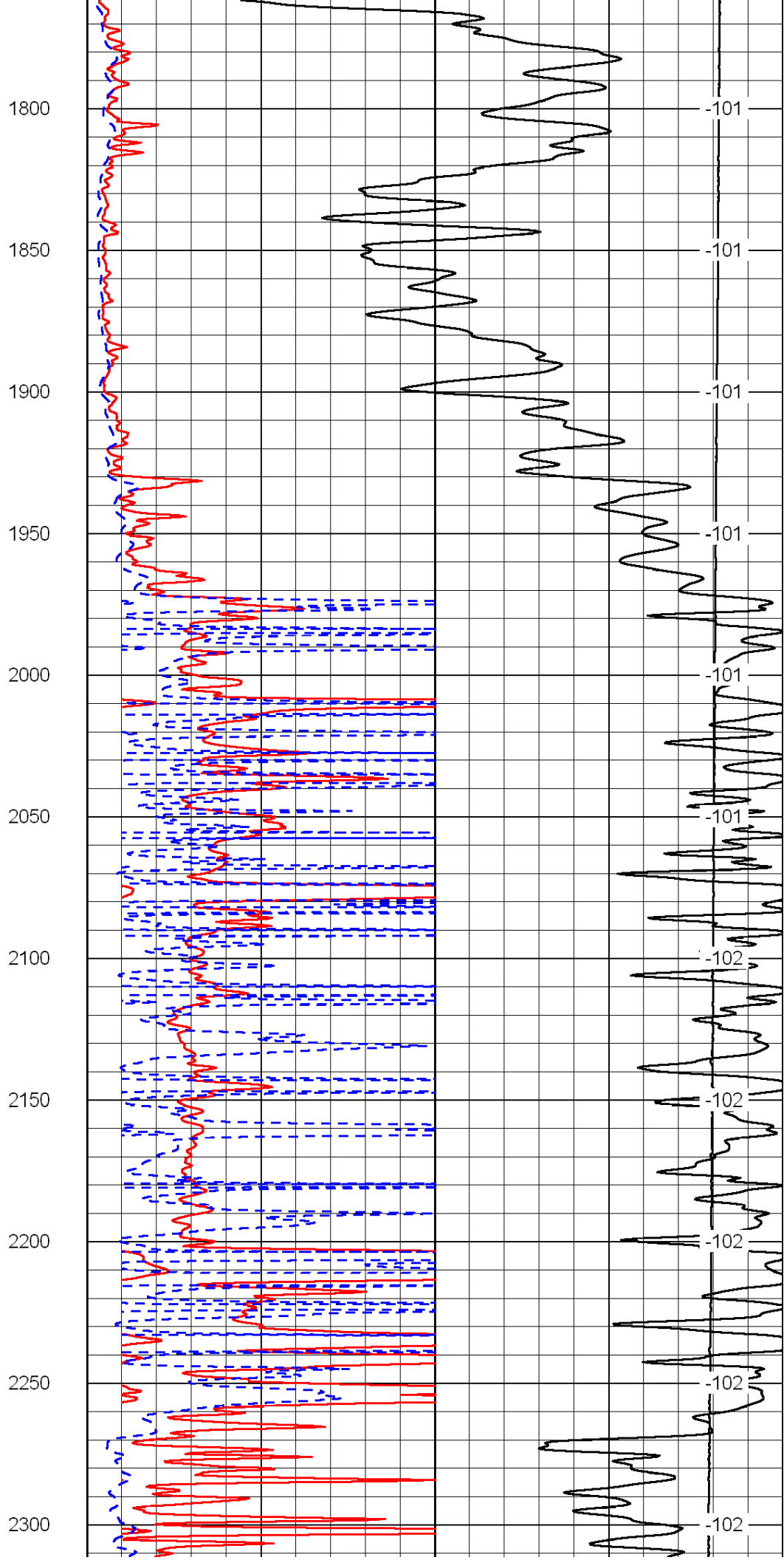
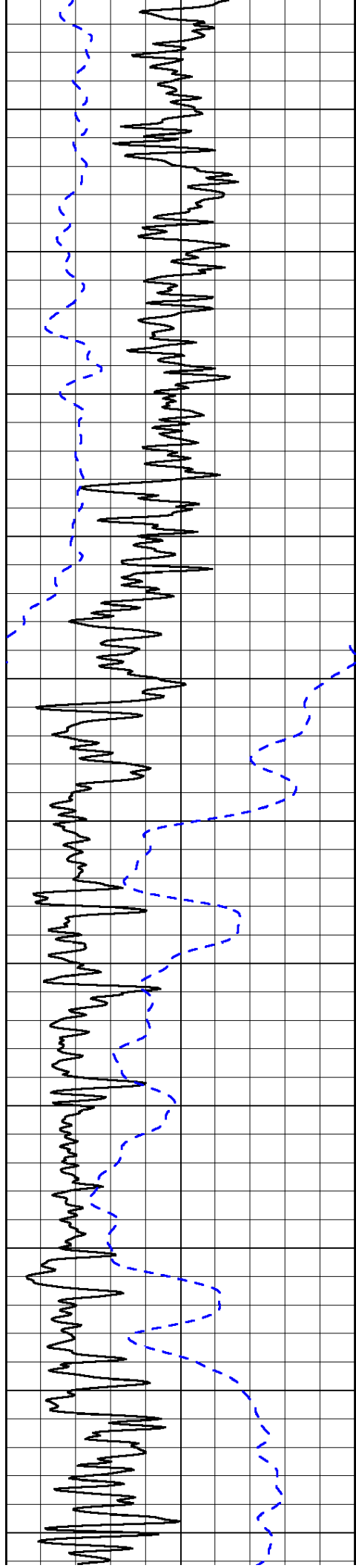
50	Shallow Resistivity	500
50	Deep Resistivity	500

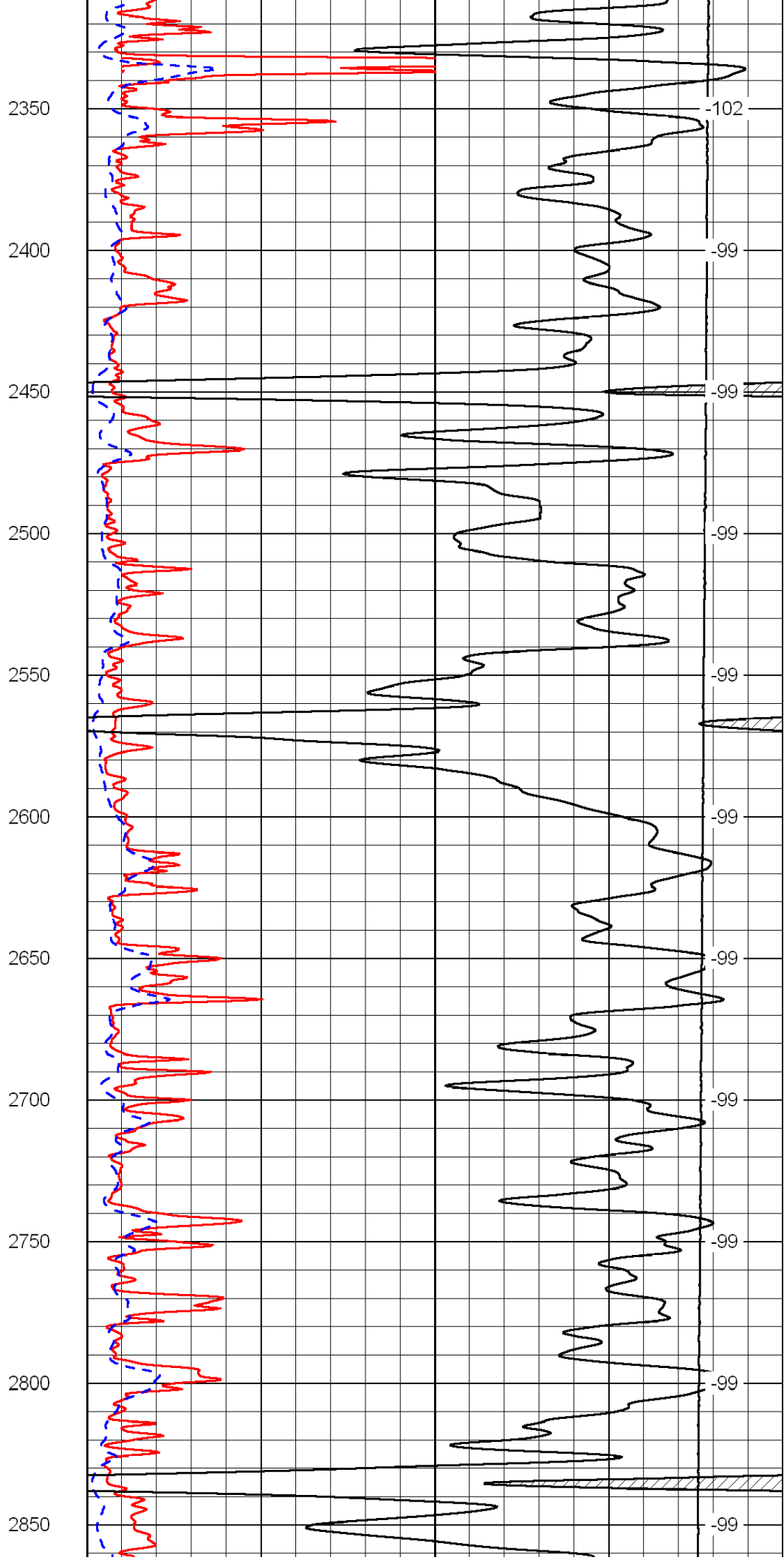
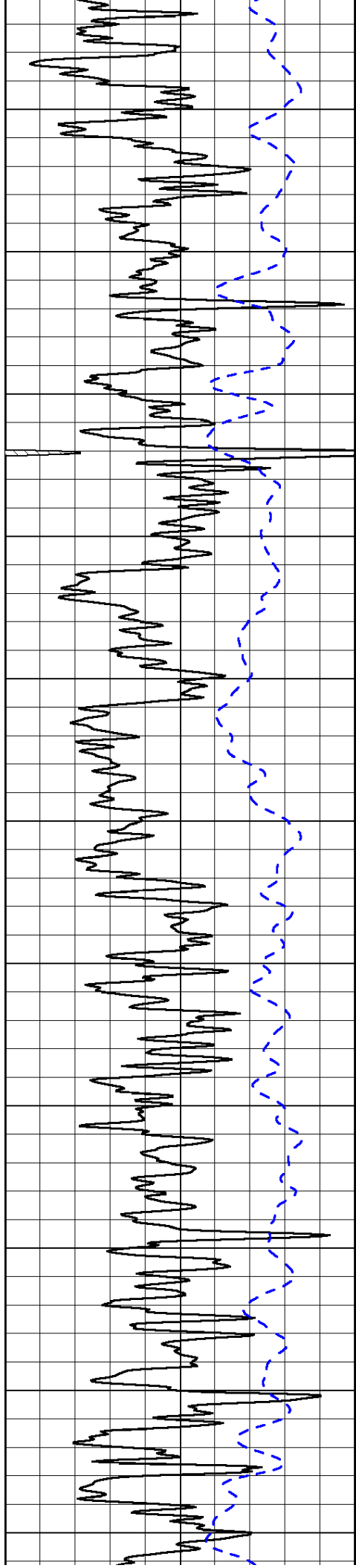


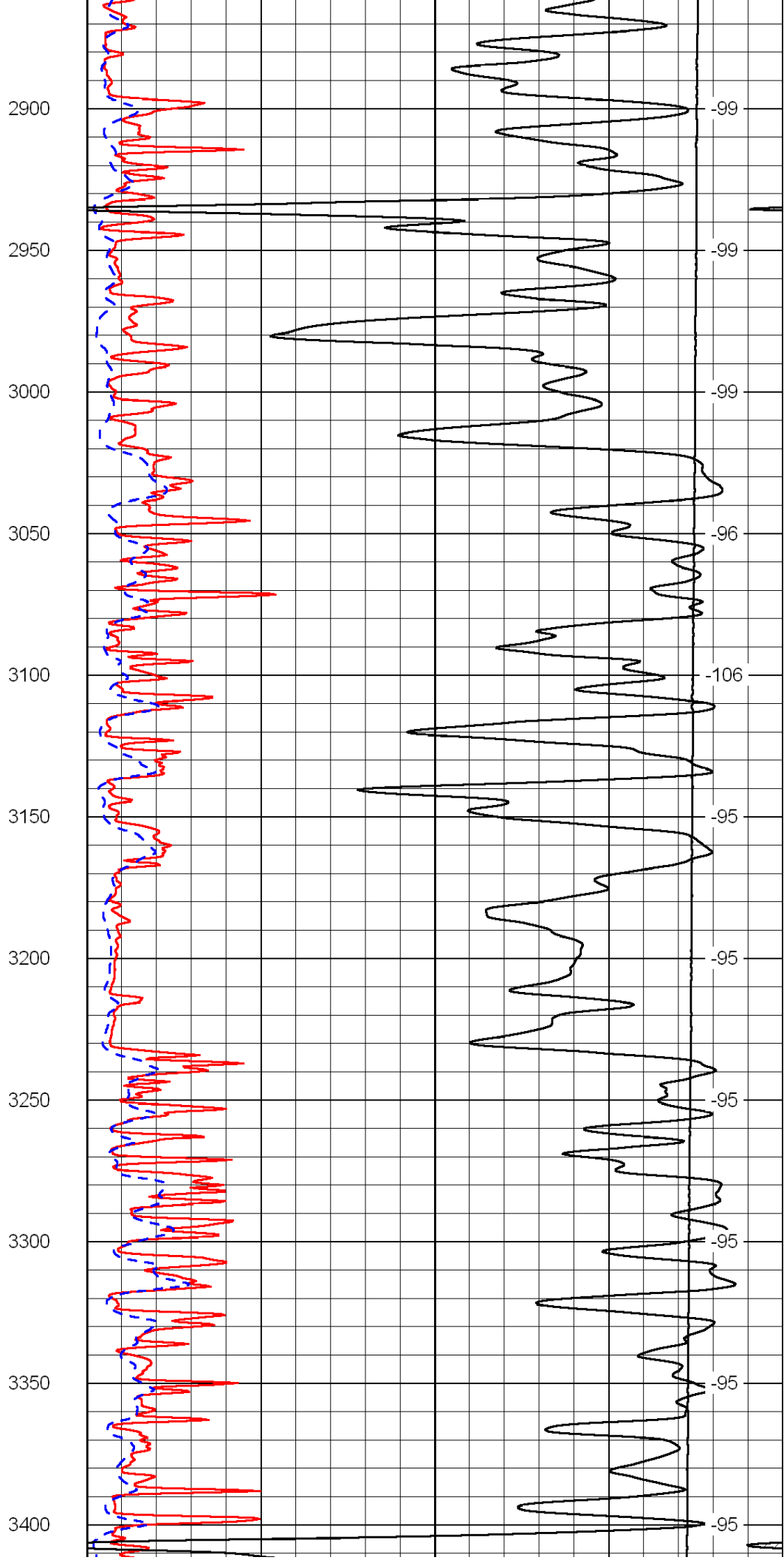
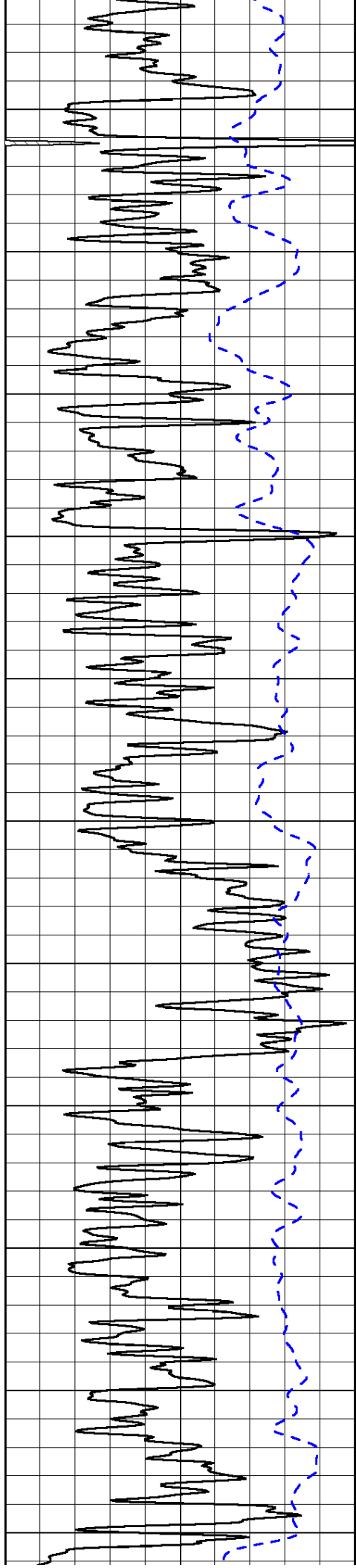
750
800
850
900
950
1000
1050
1100
1150
1200

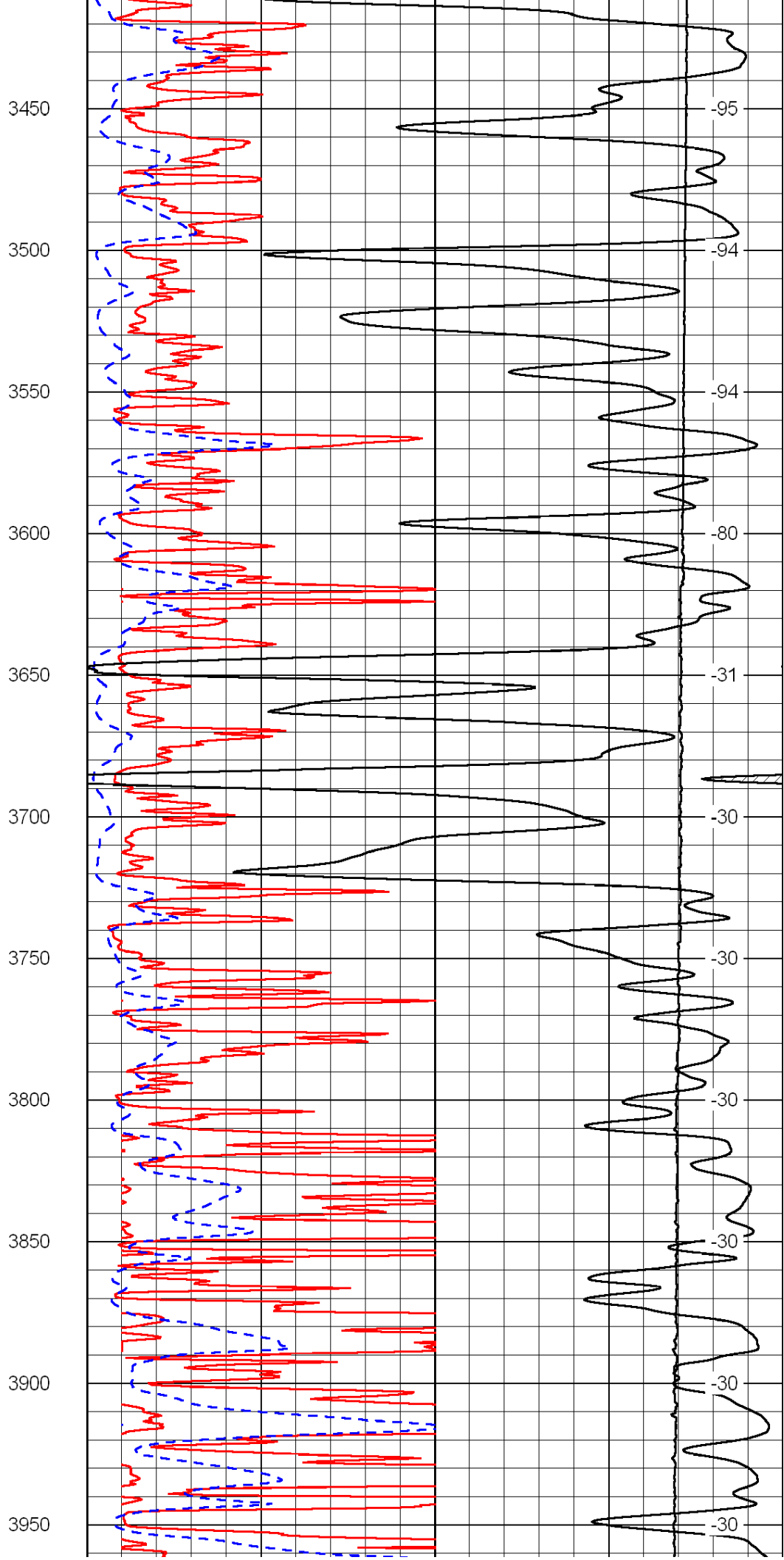
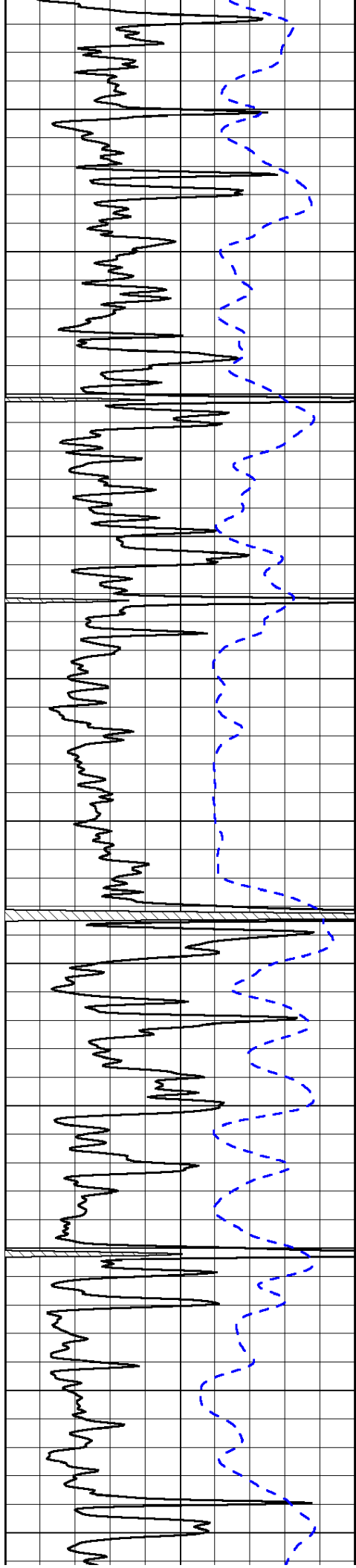
-54
-54
-77
-97
-106
-104
-104
-104
-104

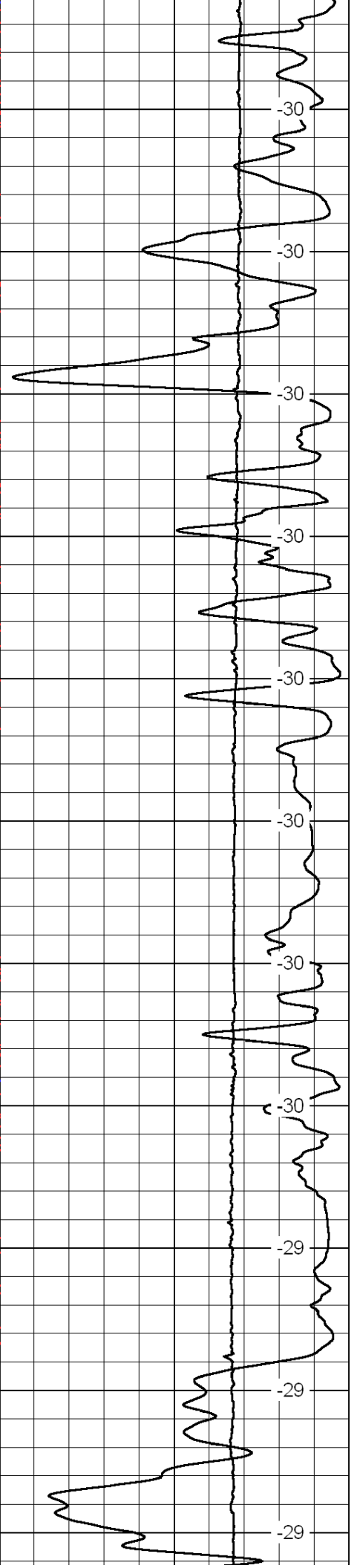
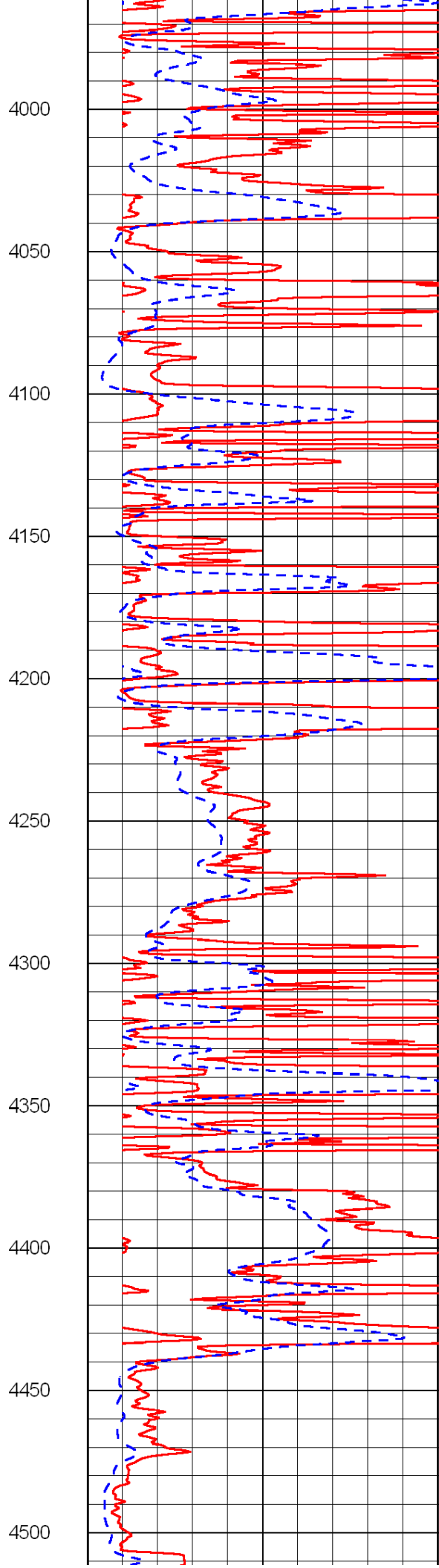
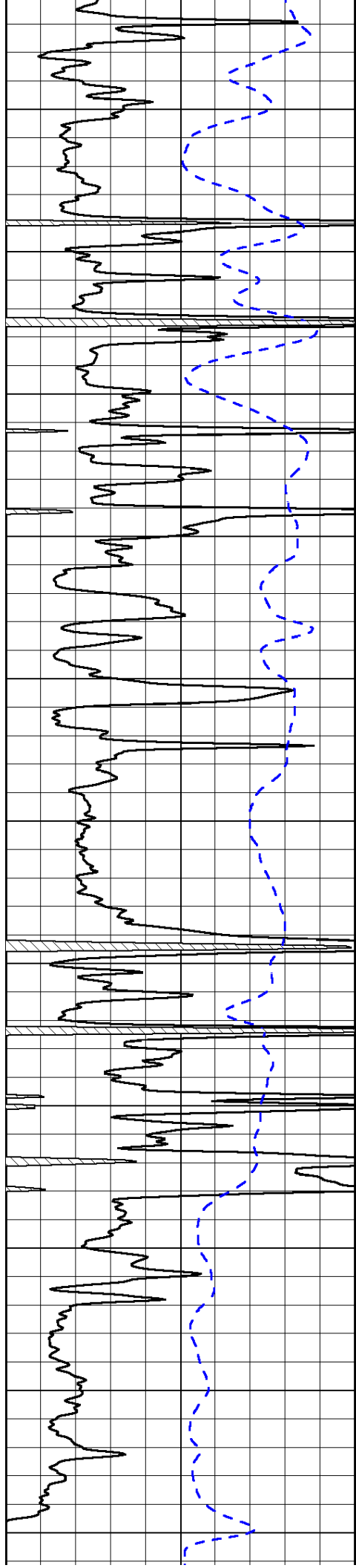


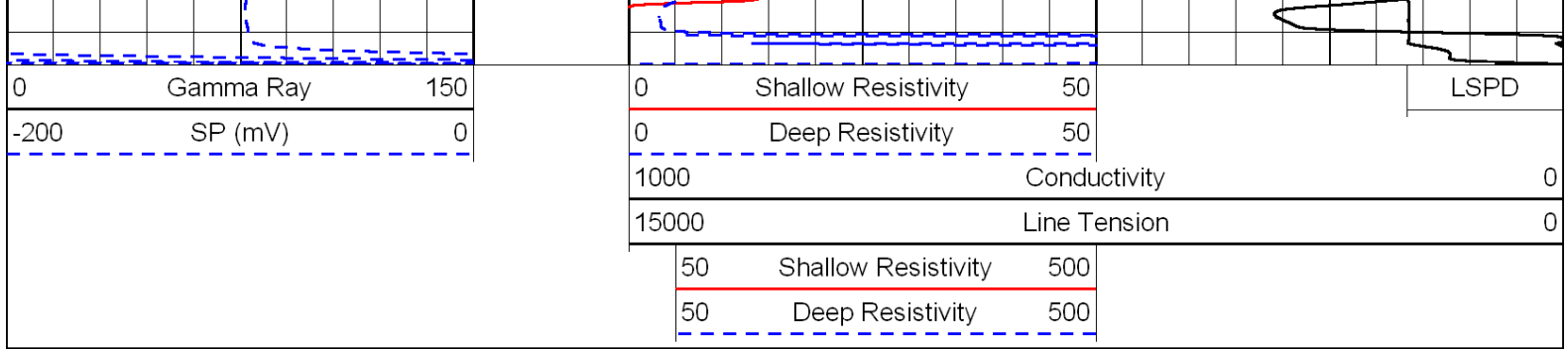




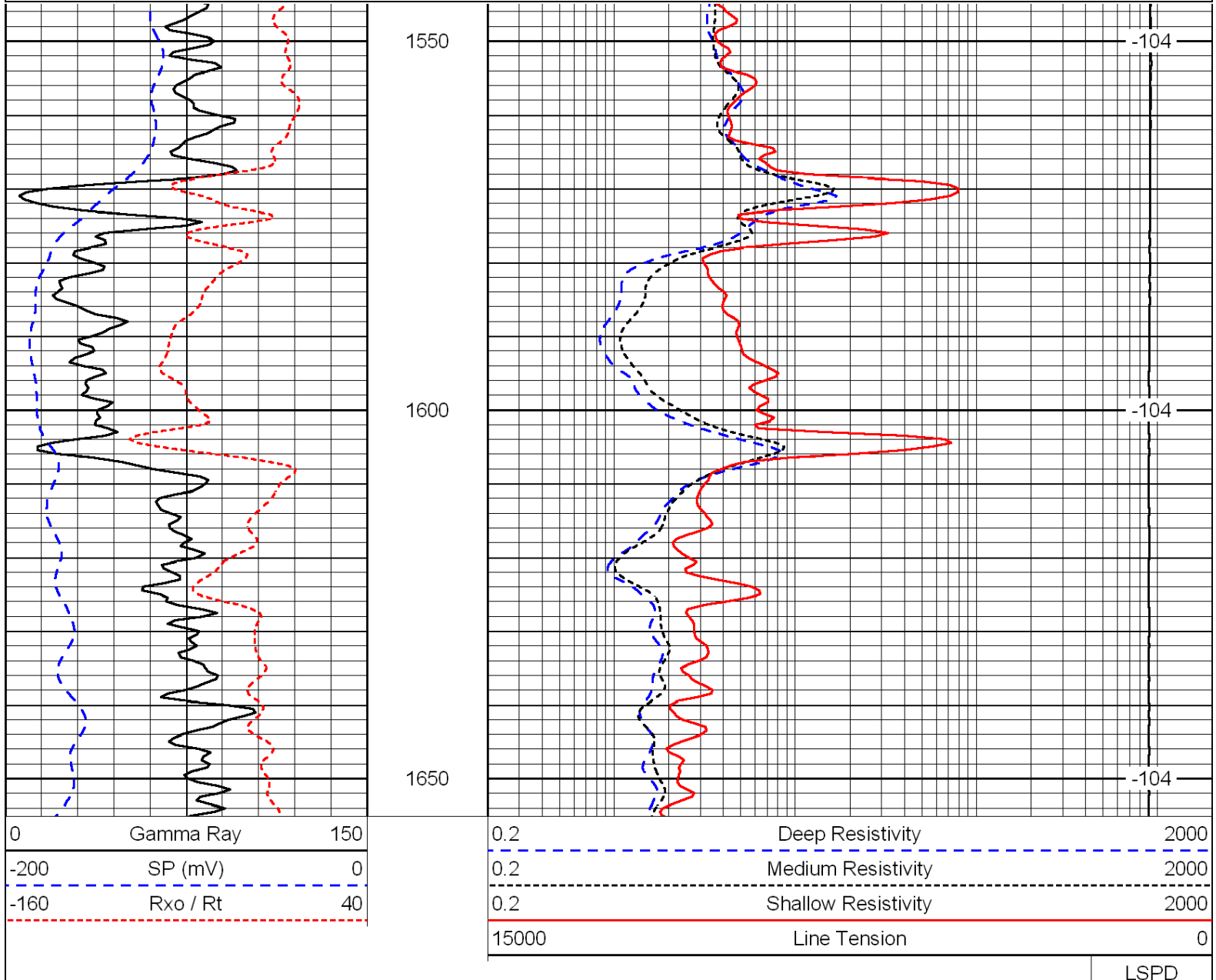
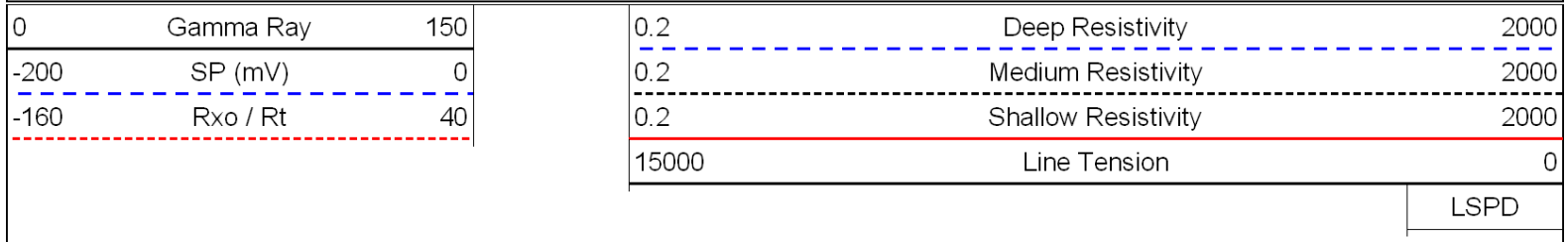








Database File: c:\warrior\data\damar_petersilie unit no. 1\damar_petersilie-1hd.db
 Dataset Pathname: dil/damarstck
 Presentation Format: dil
 Dataset Creation: Wed Oct 06 07:21:51 2010
 Charted by: Depth in Feet scaled 1:240

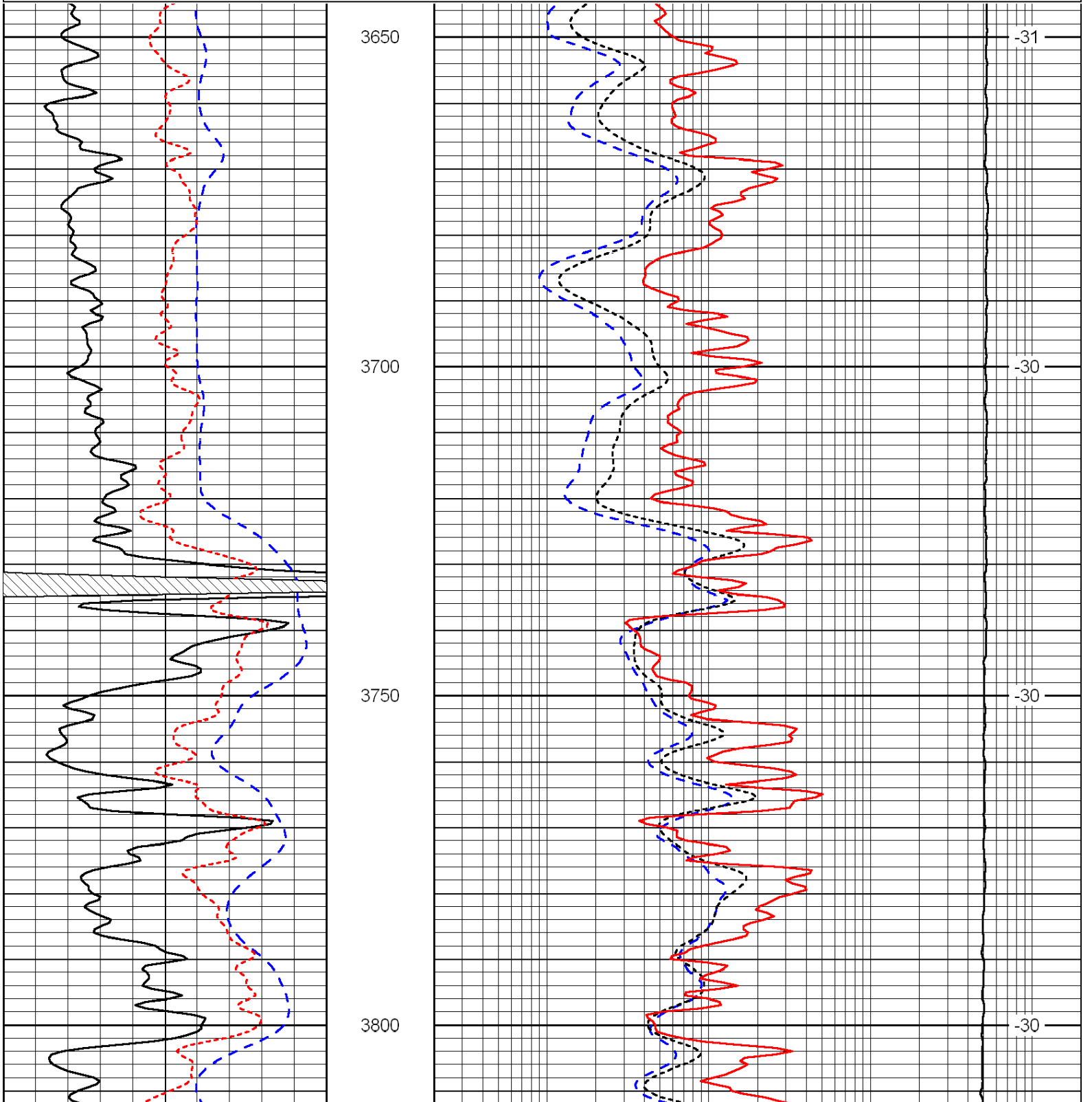


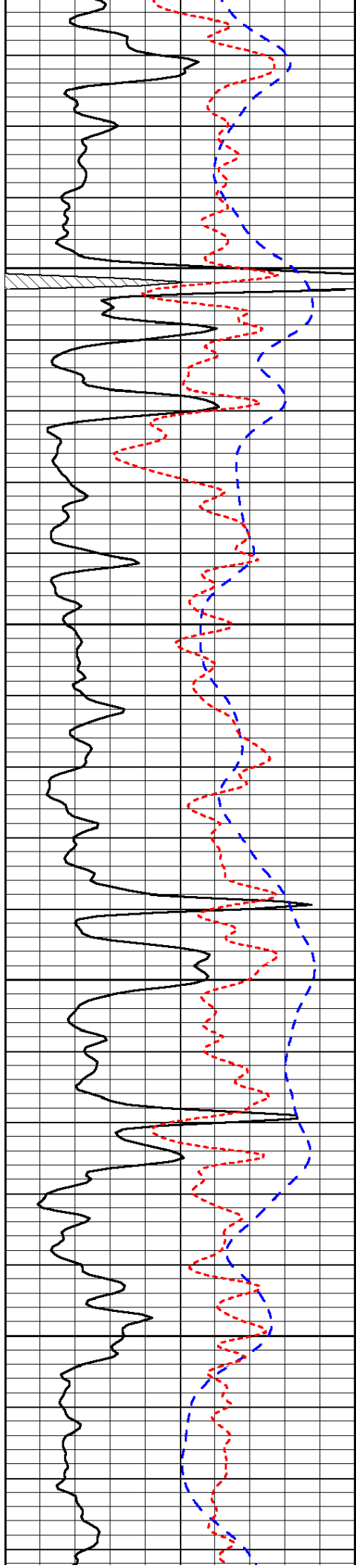
Database File: c:\warrior\data\damar_petersilie unit no. 1\damar_petersilie-1hd.db
 Dataset Pathname: dil/damarstck
 Presentation Format: dil
 Dataset Creation: Wed Oct 06 07:21:51 2010
 Charted by: Depth in Feet scaled 1:240

0	Gamma Ray	150
-200	SP (mV)	0
-160	Rxo / Rt	40

0.2	Deep Resistivity	2000
0.2	Medium Resistivity	2000
0.2	Shallow Resistivity	2000
15000	Line Tension	0

LSPD



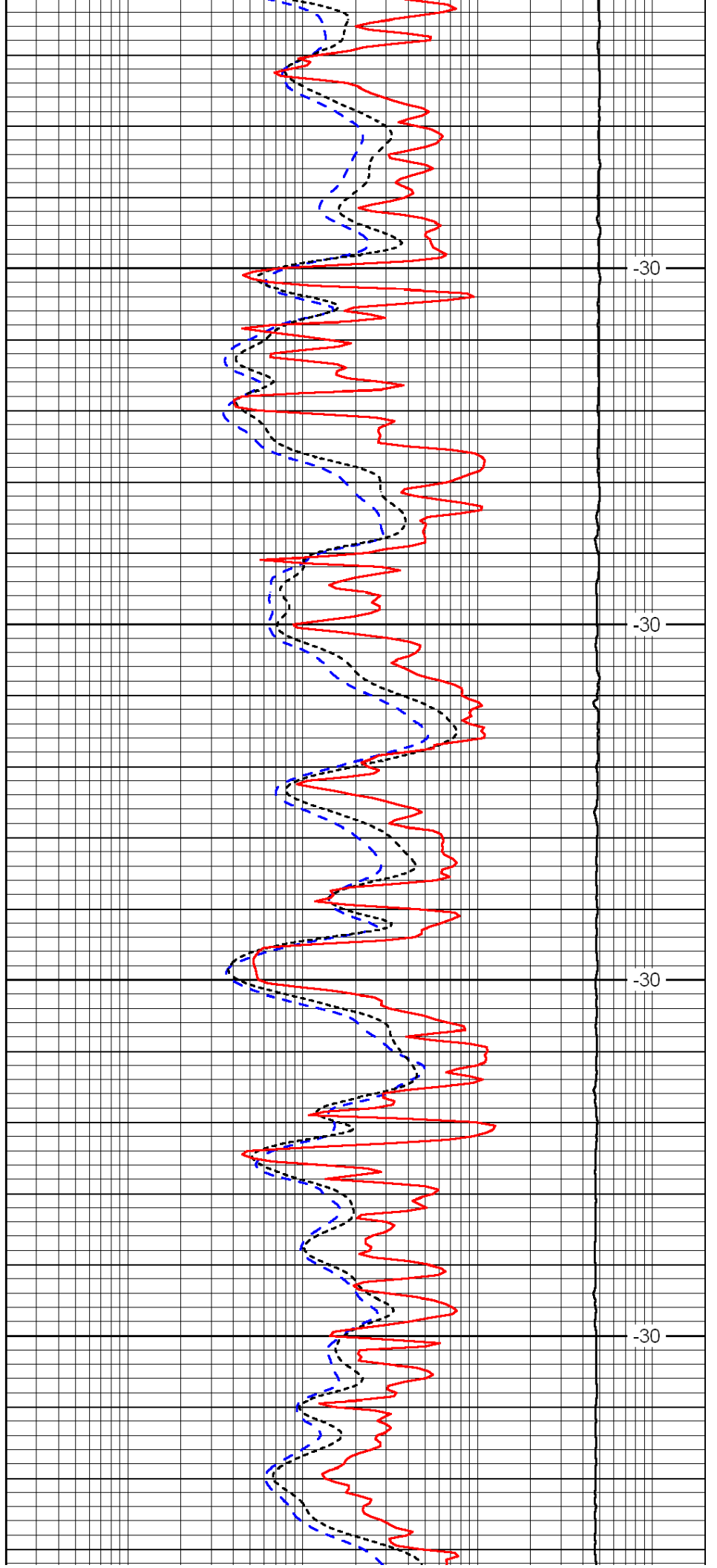


3850

3900

3950

4000

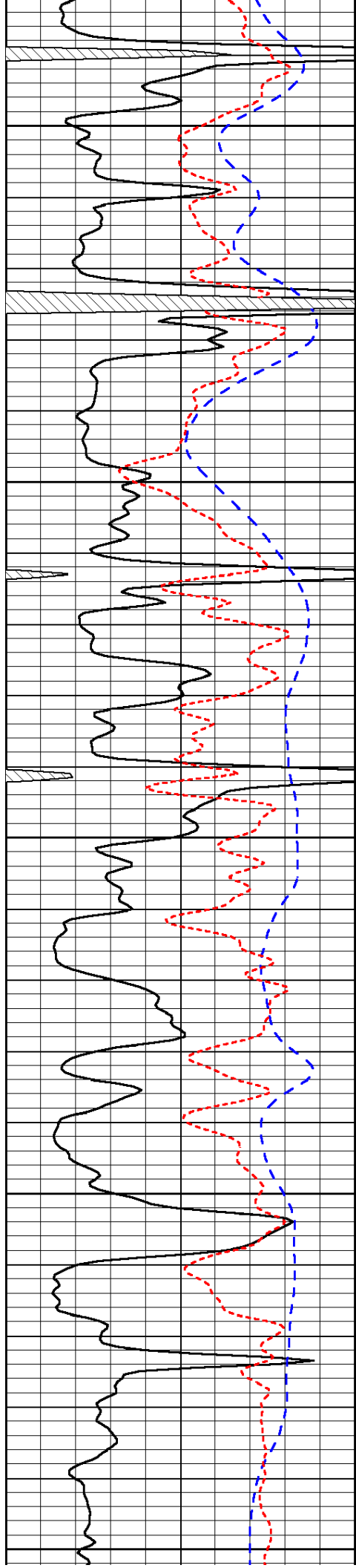


-30

-30

-30

-30



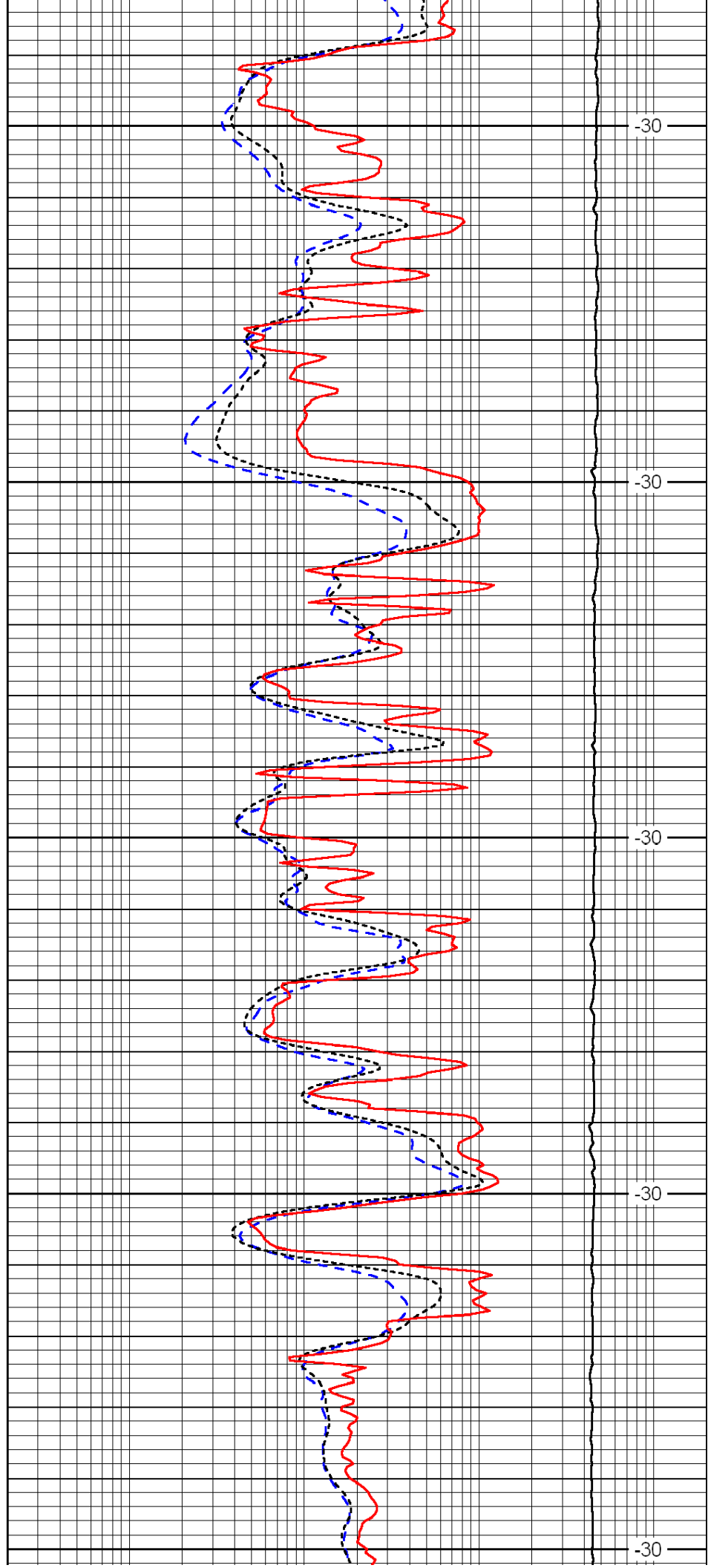
4050

4100

4150

4200

4250



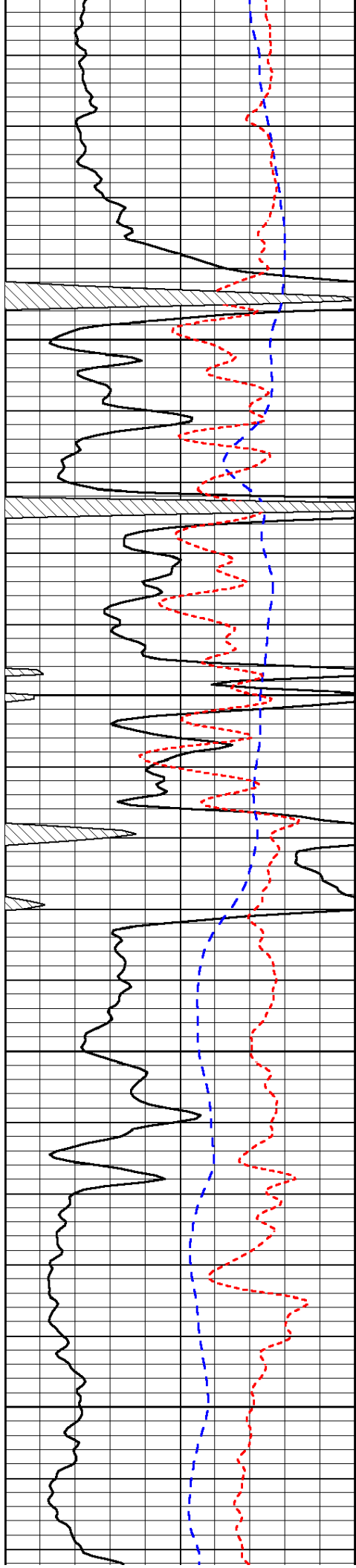
-30

-30

-30

-30

-30

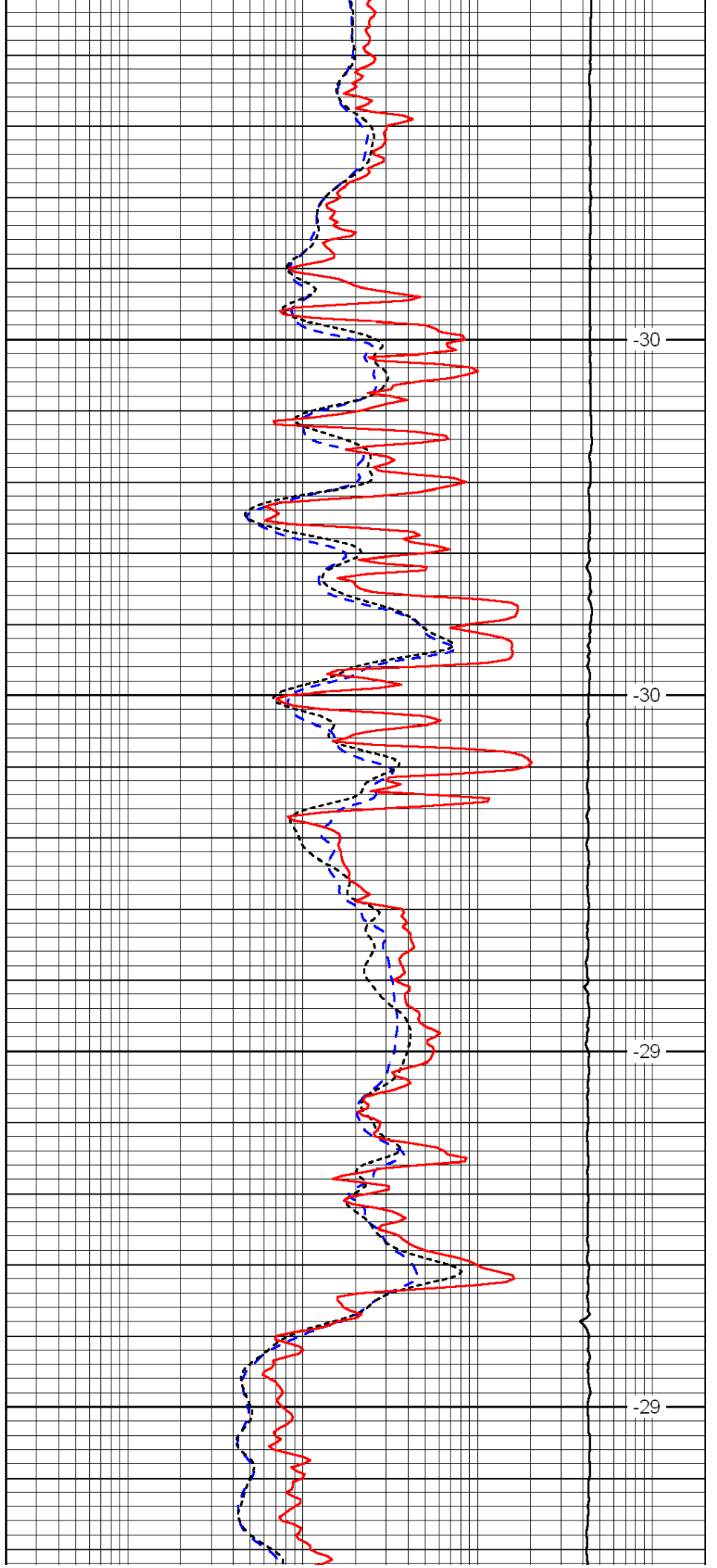


4300

4350

4400

4450

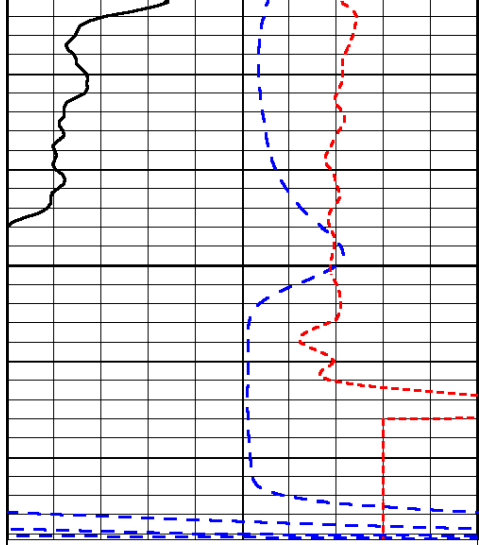


-30

-30

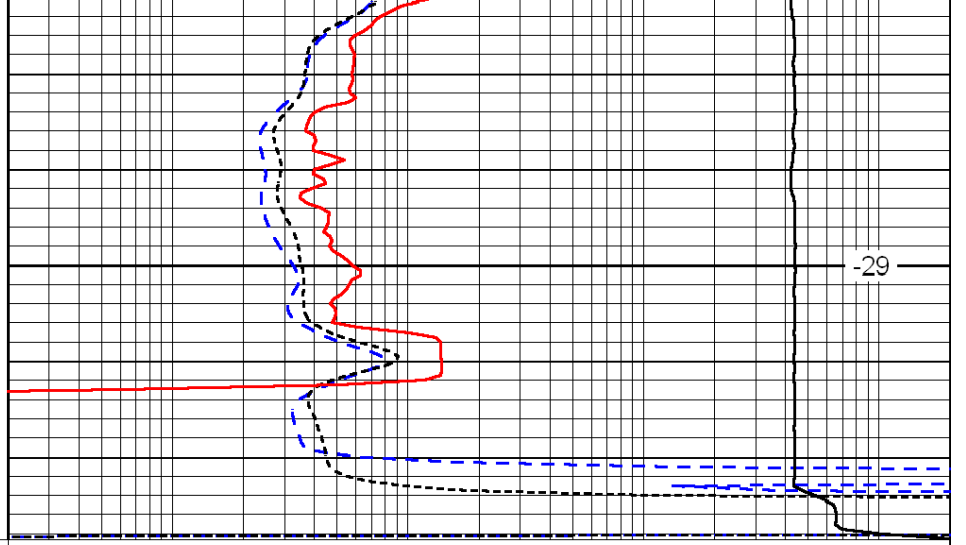
-29

-29



0	Gamma Ray	150
-200	SP (mV)	0
-160	Rxo / Rt	40

4500



0.2	Deep Resistivity	2000
0.2	Medium Resistivity	2000
0.2	Shallow Resistivity	2000
15000	Line Tension	0

-29

LSPD