



Microresistivity Log

DIGITAL LOG (785) 625-3858

API No.	15-135-25,172-00-00		
Company	DaMar Resources, Inc.		
Well	Petersilie Unit No. 1		
Field	Wildcat		
County	Ness	State	Kansas
Location	280' FNL & 1128' FWL		
Sec:	14	Twp:	20S Rge: 24W
Other Services CNL/CDL DIL			

Permanent Datum	Ground Level	Elevation	2330
Log Measured From	Kelly Bushing	5	Ft. Above Perm. Datum
Drilling Measured From	Kelly Bushing		
Date	10/06/2010		
Run Number	Two		
Depth Driller	4520		
Depth Logger	4523		
Bottom Logged Interval	4522		
Top Log Interval	3650		
Casing Driller	8.625 @ 772		
Casing Logger	768		
Bit Size	7.875		
Type Fluid in Hole	Chemical		
Salinity, ppm CL	5.000		
Density / Viscosity	9.2	50	
pH / Fluid Loss	8.0	10.4	
Source of Sample	Flowline		
Rm @ Meas. Temp	1.3	@	68
Rmf @ Meas. Temp	.98	@	68
Rmc @ Meas. Temp	1.76	@	68
Source of Rmf / Rmc	Charts		
Rm @ BHT	.72	@	123
Operating Rig Time	3 Hours		
Max Rec. Temp. F	123		
Equipment Number	17		
Location	Hays		
Recorded By	Mike Garrison		
Witnessed By	Jim Musgrove		

<<< Fold Here >>>

All interpretations are opinions based on inferences from electrical or other measurements and we cannot and do not guarantee the accuracy or correctness of any interpretation, and we shall not, except in the case of gross or willful negligence on our part, be liable or responsible for any loss, costs, damages, or expenses incurred or sustained by anyone resulting from any interpretation made by any of our officers, agents or employees. These interpretations are also subject to our general terms and conditions set out in our current Price Schedule.

Comments

Thank you for using Log-Tech, Inc.
 (785) 625-3858

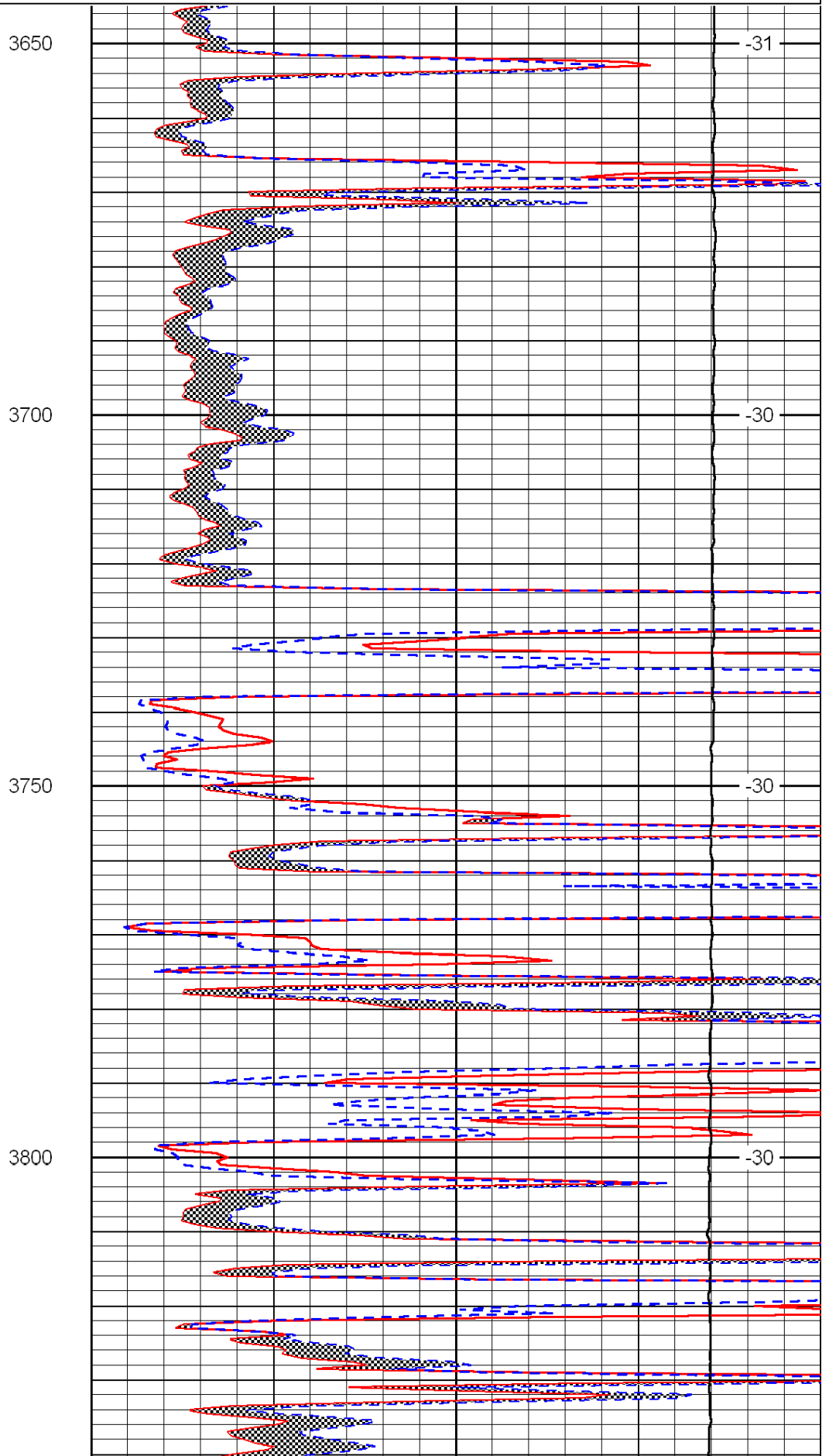
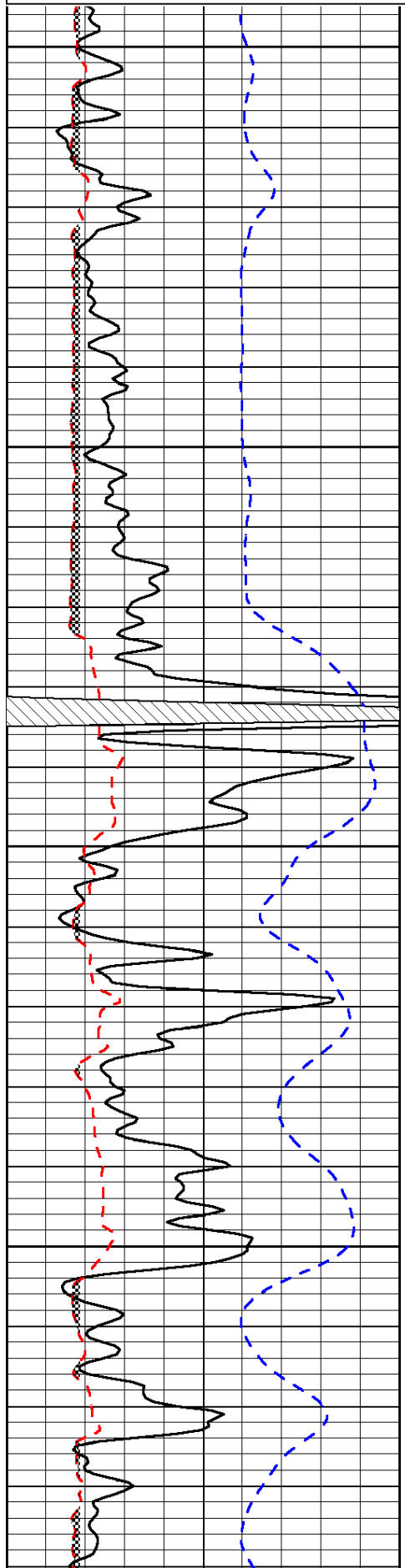
 Ness City, 9 South, 2.8 West, South Into

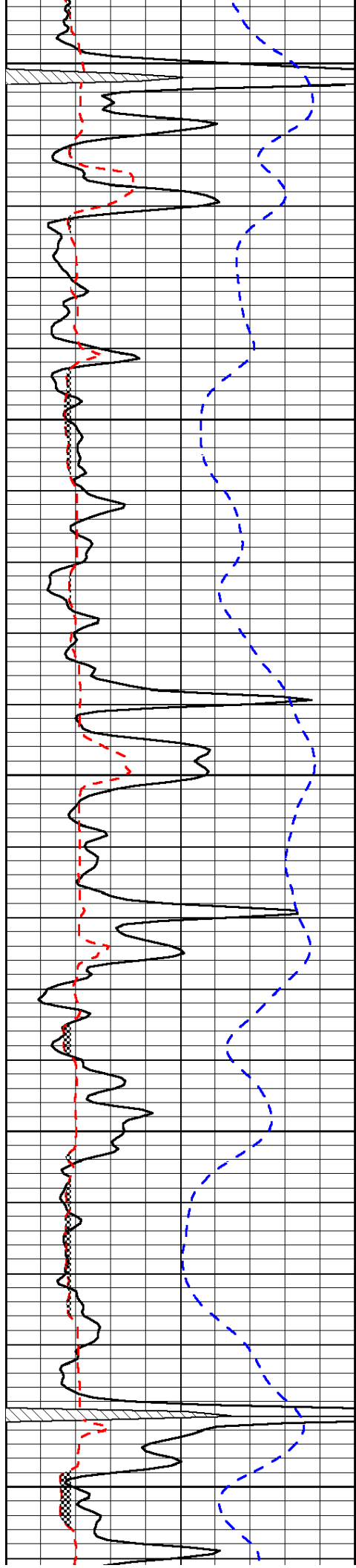
Database File:	c:\warrior\data\damar_petersilie unit no. 1\damar_petersilie-1hd.db
Dataset Pathname:	dil\damarstock
Presentation Format:	micro
Dataset Creation:	Wed Oct 06 07:21:51 2010
Charted by:	Depth in Feet scaled 1:240

0	Gamma Ray	150
6	Micro Log Caliper (GAPI)	16
-200	SP (mV)	0

0	Micro Inverse 1 X 1	40
0	Micro Normal 2"	40
15000	Line Weight	0

LSPD





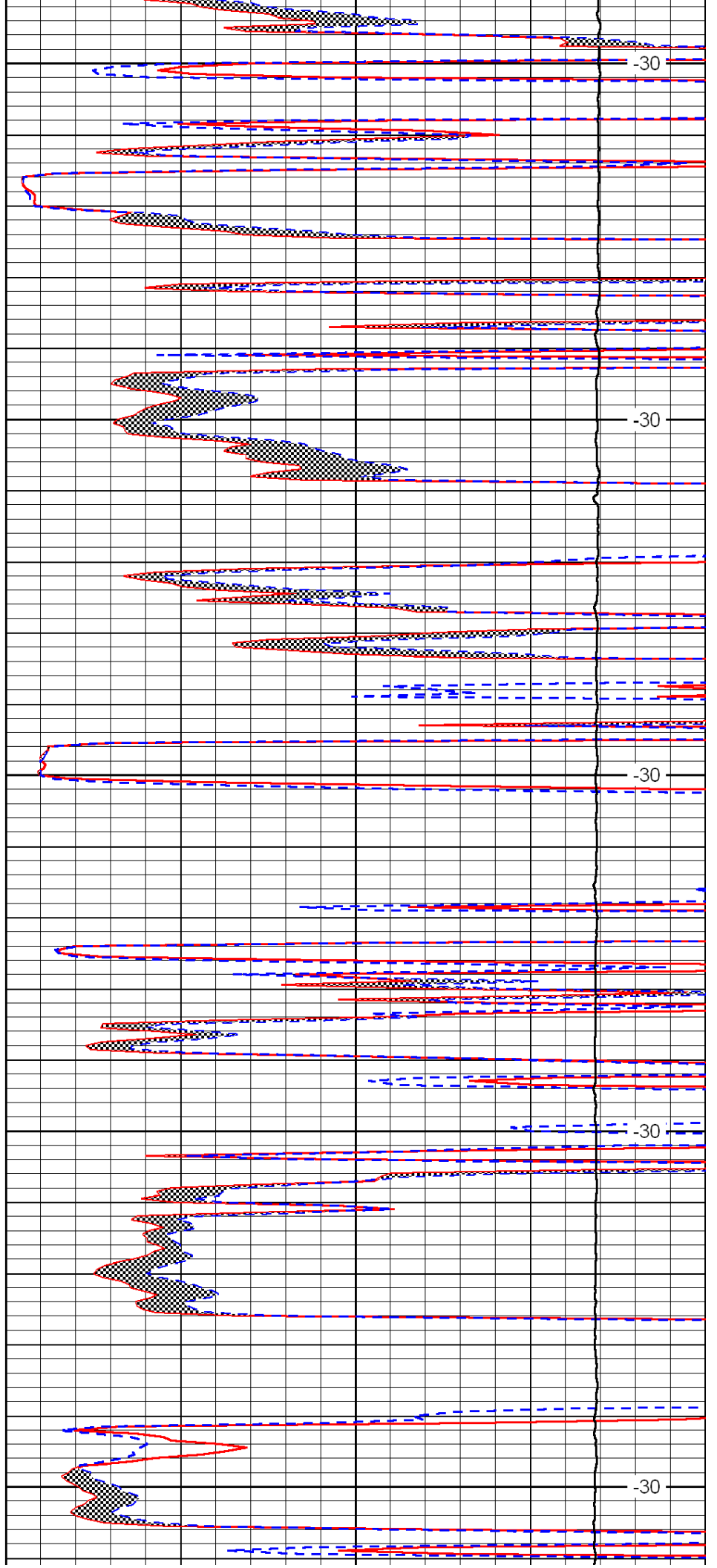
3850

3900

3950

4000

4050



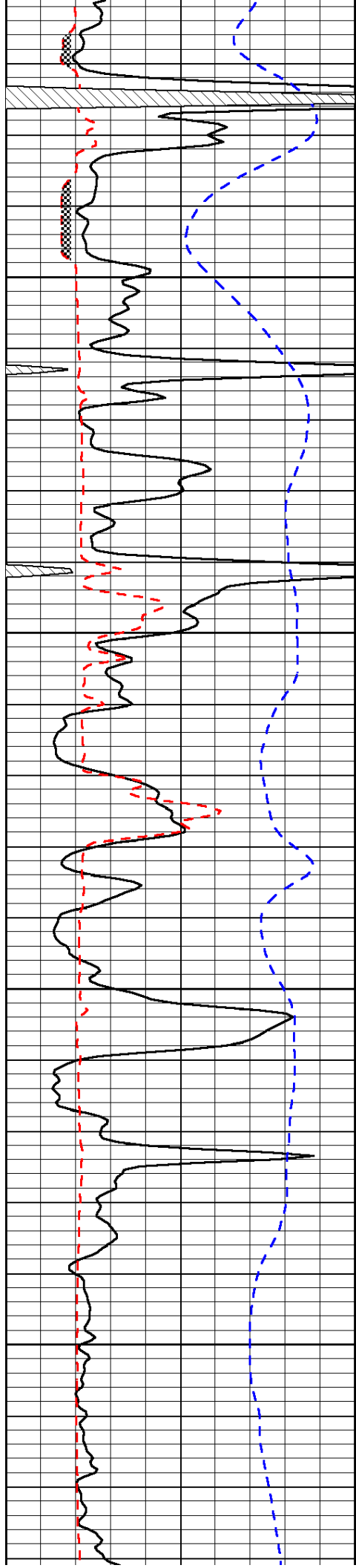
-30

-30

-30

-30

-30

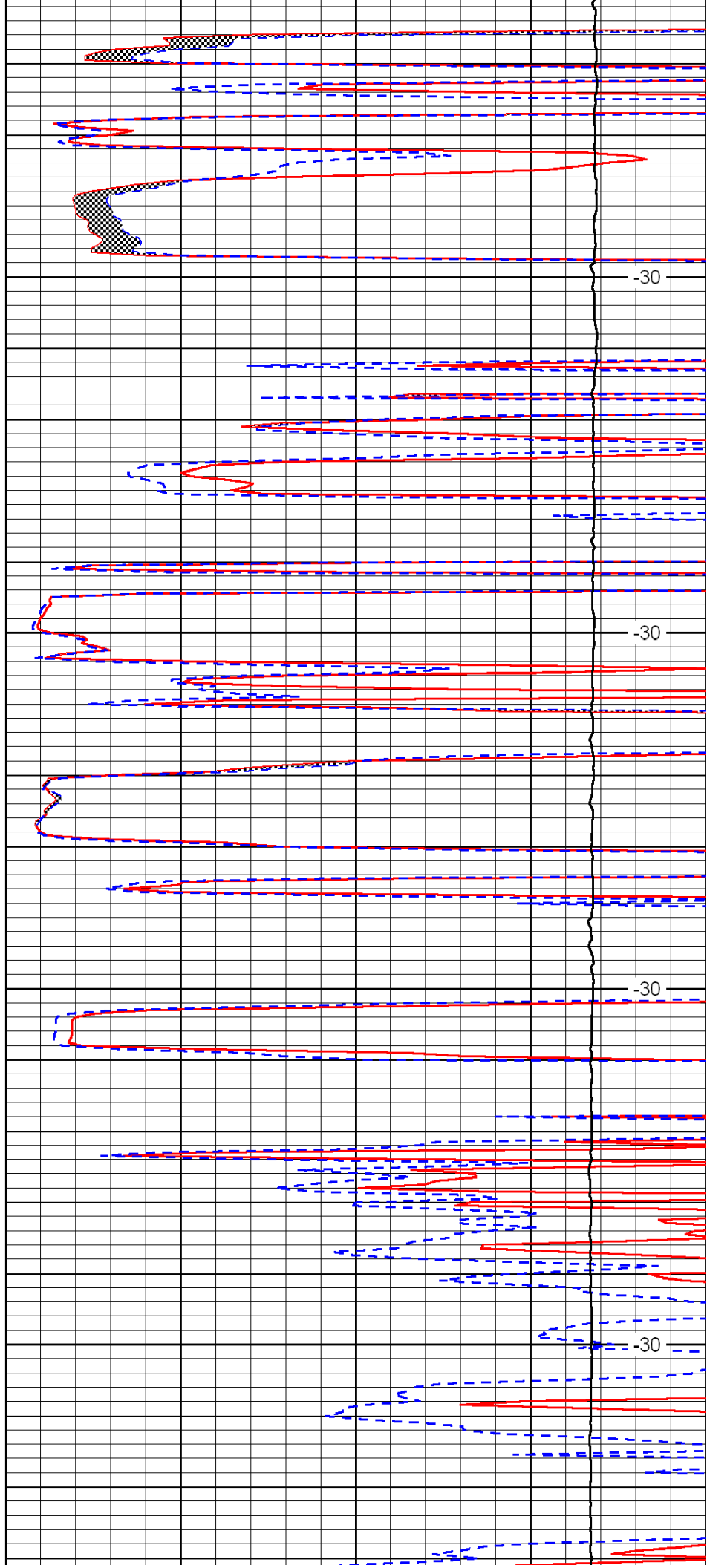


4100

4150

4200

4250

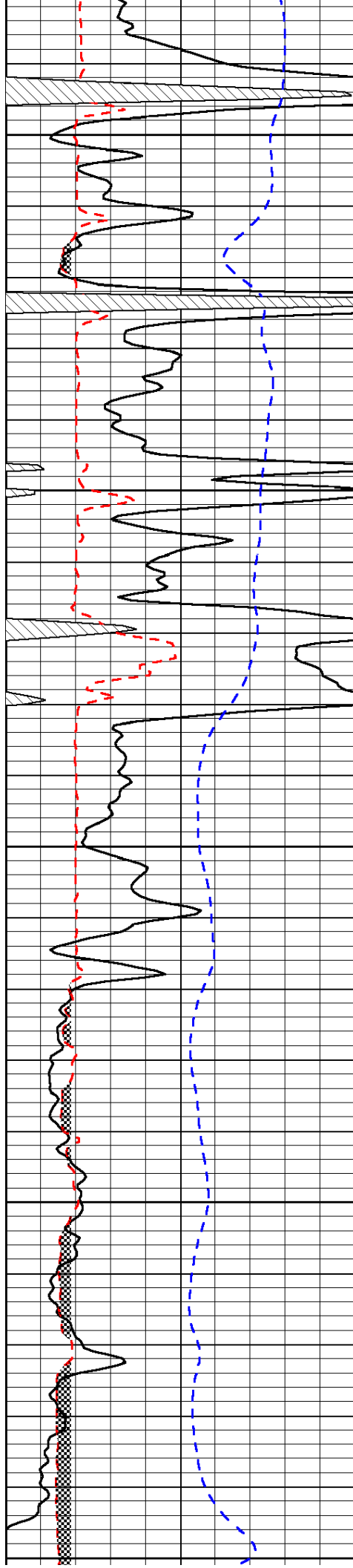


-30

-30

-30

-30



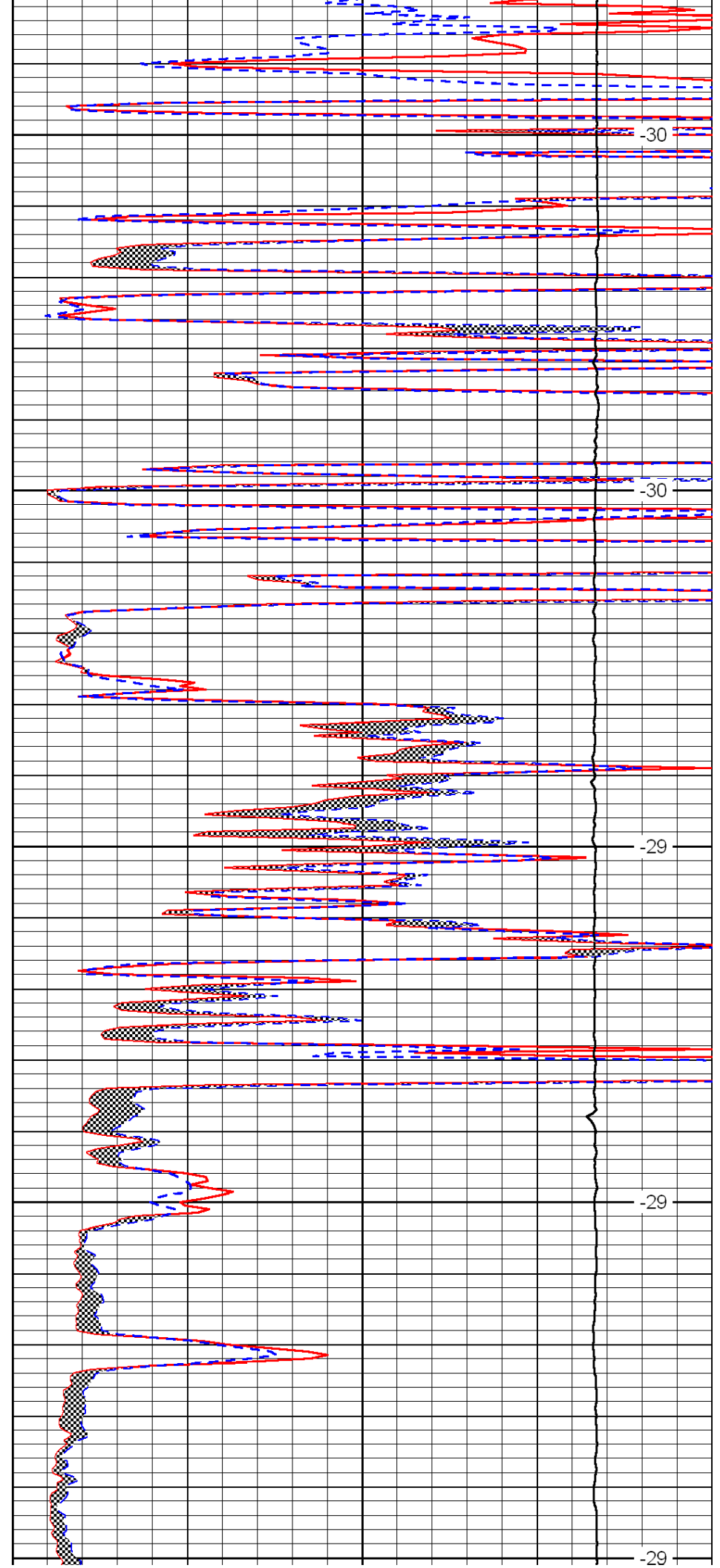
4300

4350

4400

4450

4500



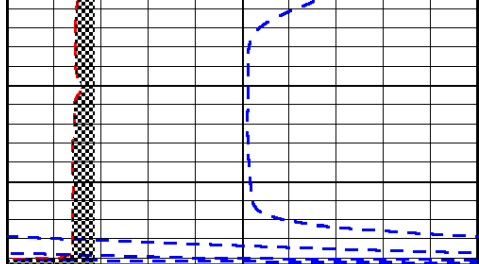
-30

-30

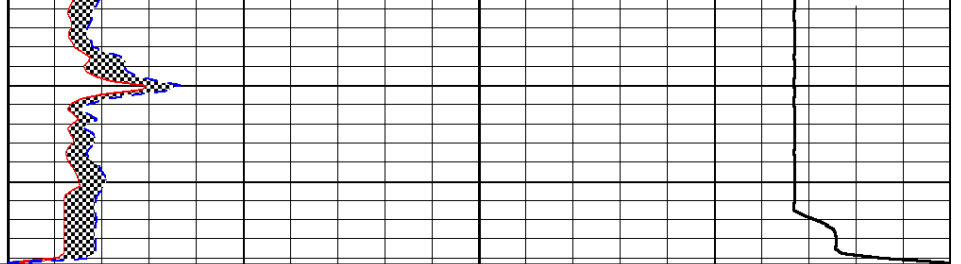
-29

-29

-29



0	Gamma Ray	150
6	Micro Log Caliper (GAPI)	16
-200	SP (mV)	0



0	Micro Inverse 1 X 1	40
0	Micro Normal 2''	40
15000	Line Weight	0

LSPD