



**DIGITAL LOG** (785) 625-3858

**Microresistivity  
Log**

API No. 15-159-22,622-00-00

Company **Gilbert-Stewart Operating, L.L.C.**  
 Well **Lincoln No. 8**  
 Field **Chase - Silica**  
 County **Rice** State **Kansas**

Location **960' FSL & 1,210' FWL**

Sec: **6** Twp: **19S** Rge: **9W**

Other Services  
 CNL/CDL  
 DIL/BHCS

Permanent Datum	Ground Level	Elevation	1712
Log Measured From	Kelly Bushing	8	Ft. Above Perm. Datum
Drilling Measured From	Kelly Bushing		
Date		9/15/2010	
Run Number	Two		
Depth Driller	3350		
Depth Logger	3351		
Bottom Logged Interval	3350		
Top Log Interval	2400		
Casing Driller	8.625 @ 303		
Casing Logger	302		
Bit Size	7.875		
Type Fluid in Hole	Chemical		
Salinity, ppm CL	8600		
Density / Viscosity	9.0	54	
pH / Fluid Loss	9.5	8.8	
Source of Sample	Flowline		
Rm @ Meas. Temp	.22 @ 72		
Rmf @ Meas. Temp	.17 @ 72		
Rmc @ Meas. Temp	.30 @ 72		
Source of Rmf / Rmc	Charts		
Rm @ BHT	.14 @ 110		
Operating Rig Time	4 1/2 Hours		
Max Rec. Temp. F	110		
Equipment Number	10		
Location	Hays		
Recorded By	J. Long		
Witnessed By	Derek Patterson		

<<< Fold Here >>>

All interpretations are opinions based on inferences from electrical or other measurements and we cannot and do not guarantee the accuracy or correctness of any interpretation, and we shall not, except in the case of gross or willful negligence on our part, be liable or responsible for any loss, costs, damages, or expenses incurred or sustained by anyone resulting from any interpretation made by any of our officers, agents or employees. These interpretations are also subject to our general terms and conditions set out in our current Price Schedule.

**Comments**

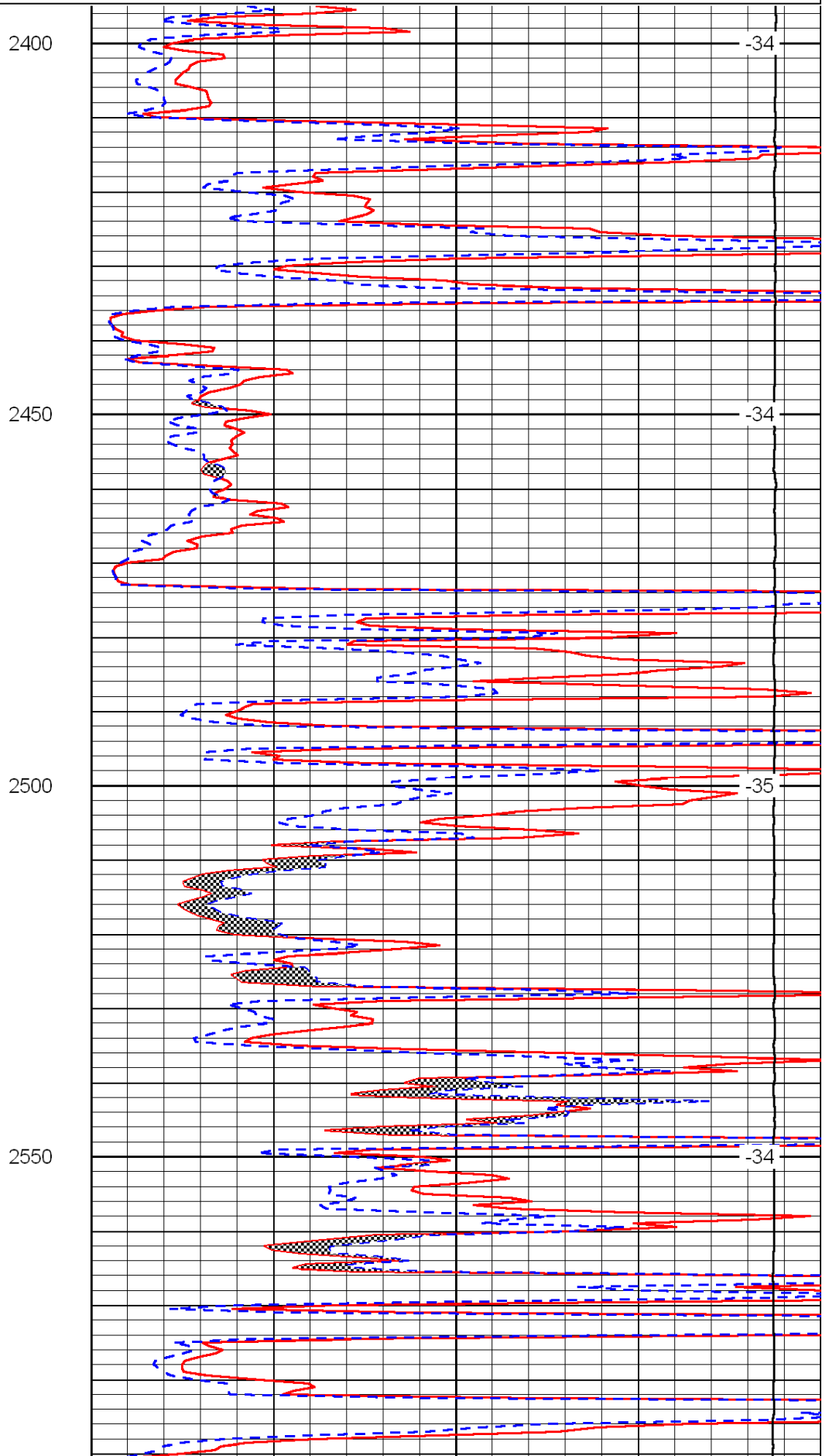
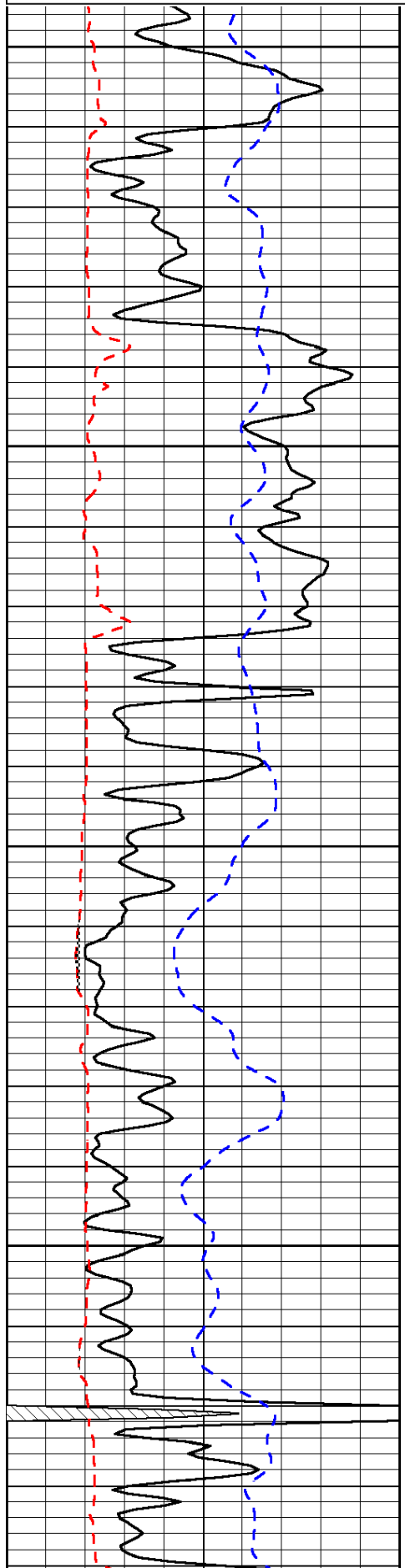
Thank you for using Log-Tech, Inc.  
(785) 625-3858

Clafin, East to Chase Blacktop, South to H Rd, 1 West, 1/2 North, East Into

0	Gamma Ray	150
6	Micro Log Caliper (GAPI)	16
-200	SP (mV)	0

0	Micro Inverse 1 X 1	40
0	Micro Normal 2"	40
15000	Line Weight	0

LSPD



2400

-34

2450

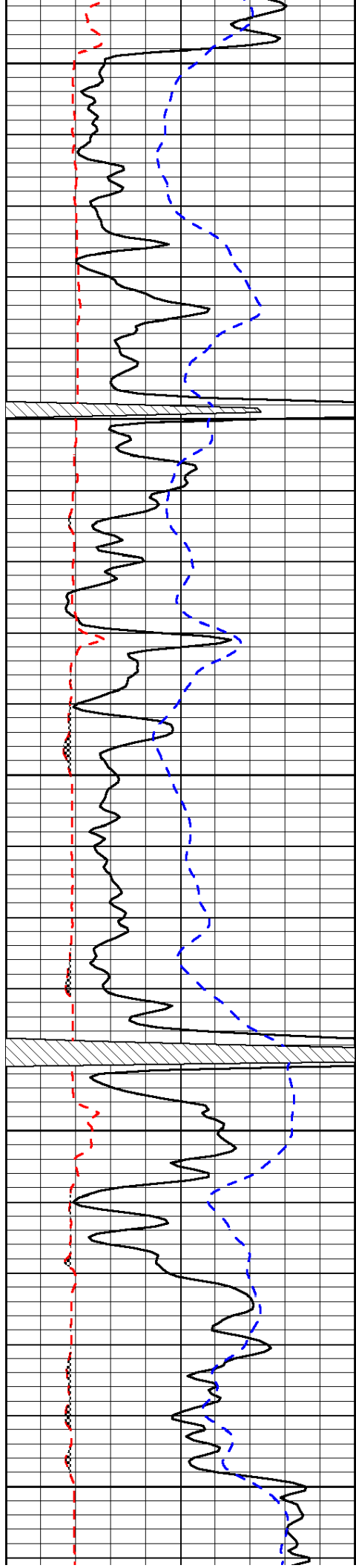
-34

2500

-35

2550

-34



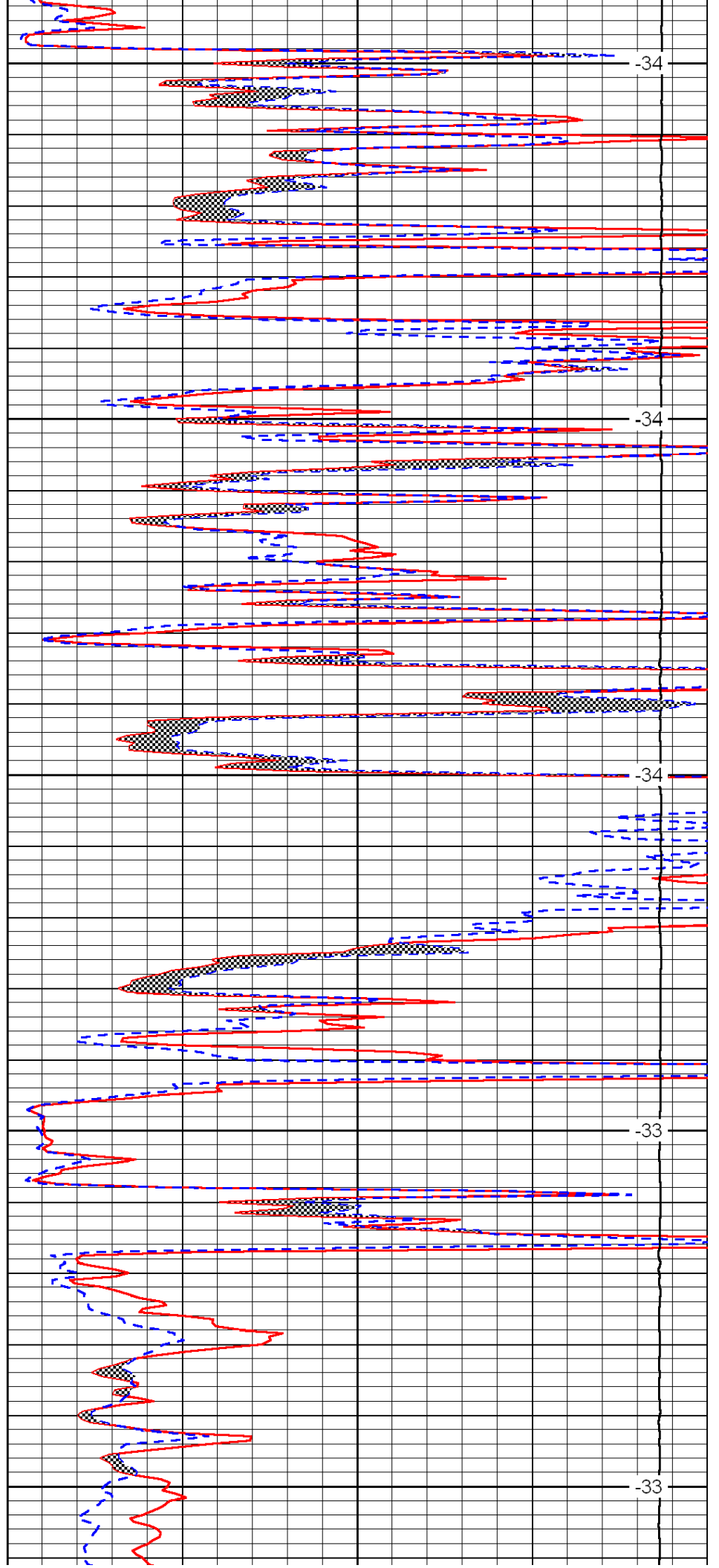
2600

2650

2700

2750

2800



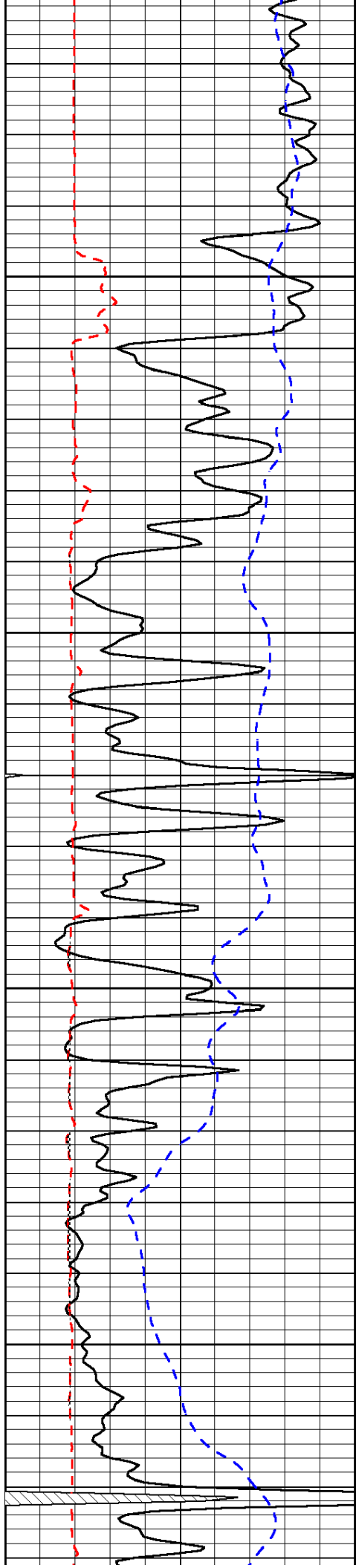
-34

-34

-34

-33

-33



2850

2900

2950

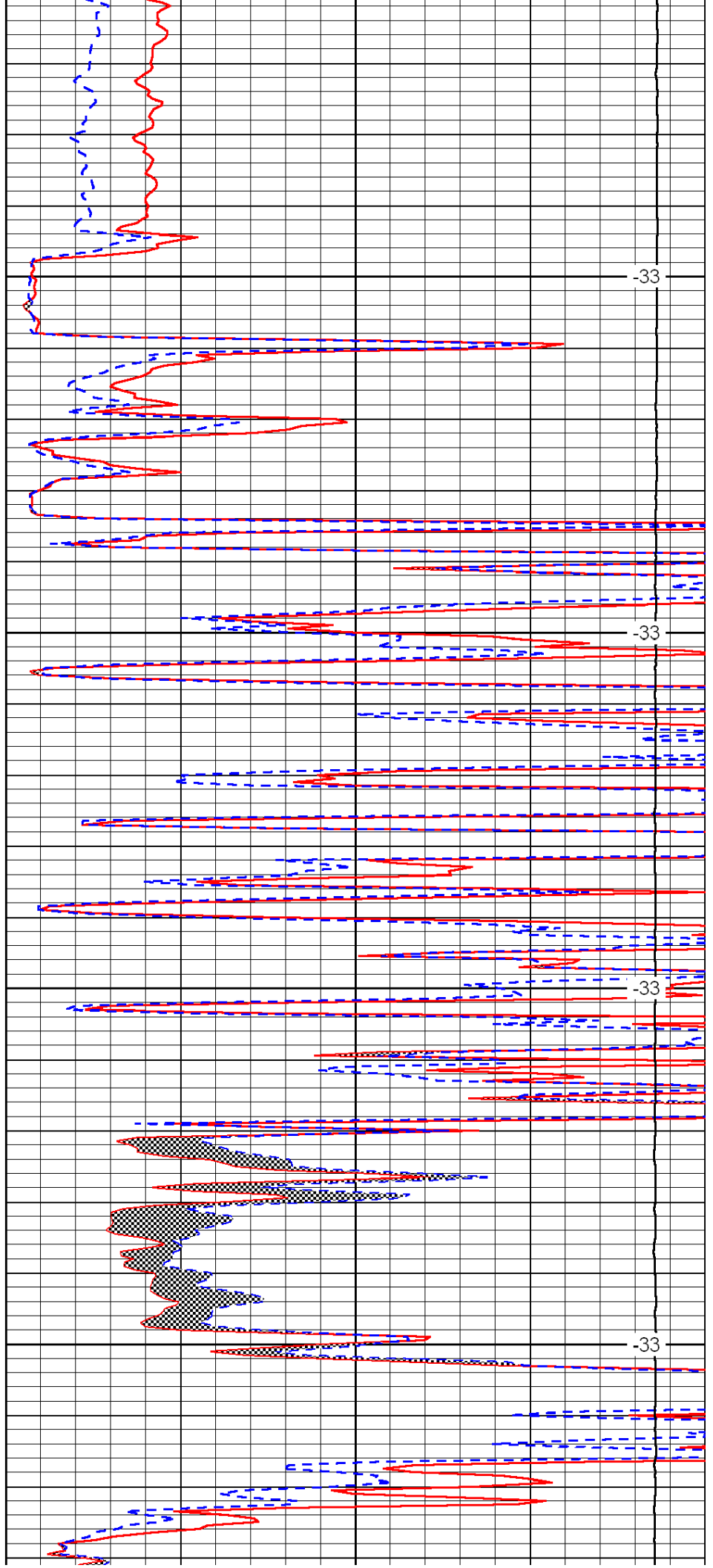
3000

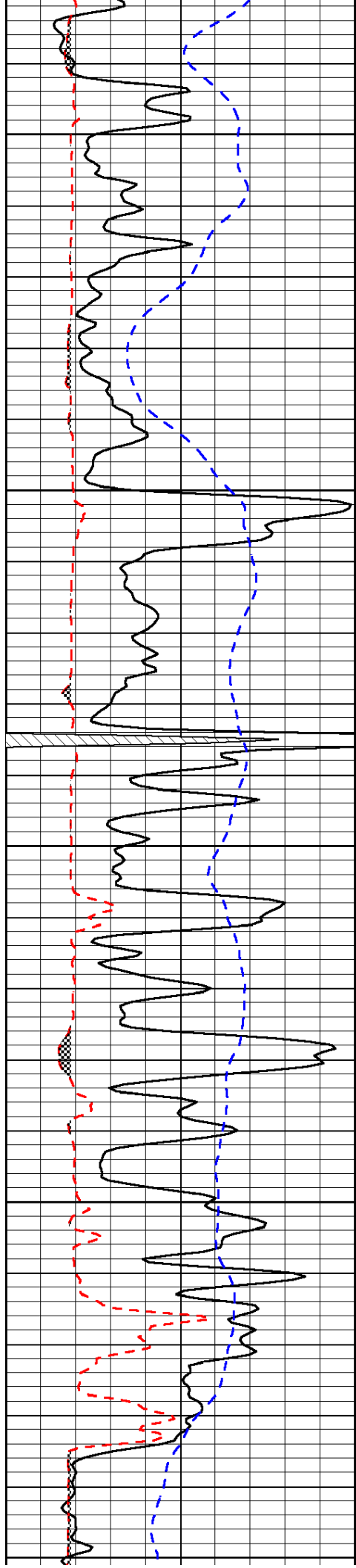
-33

-33

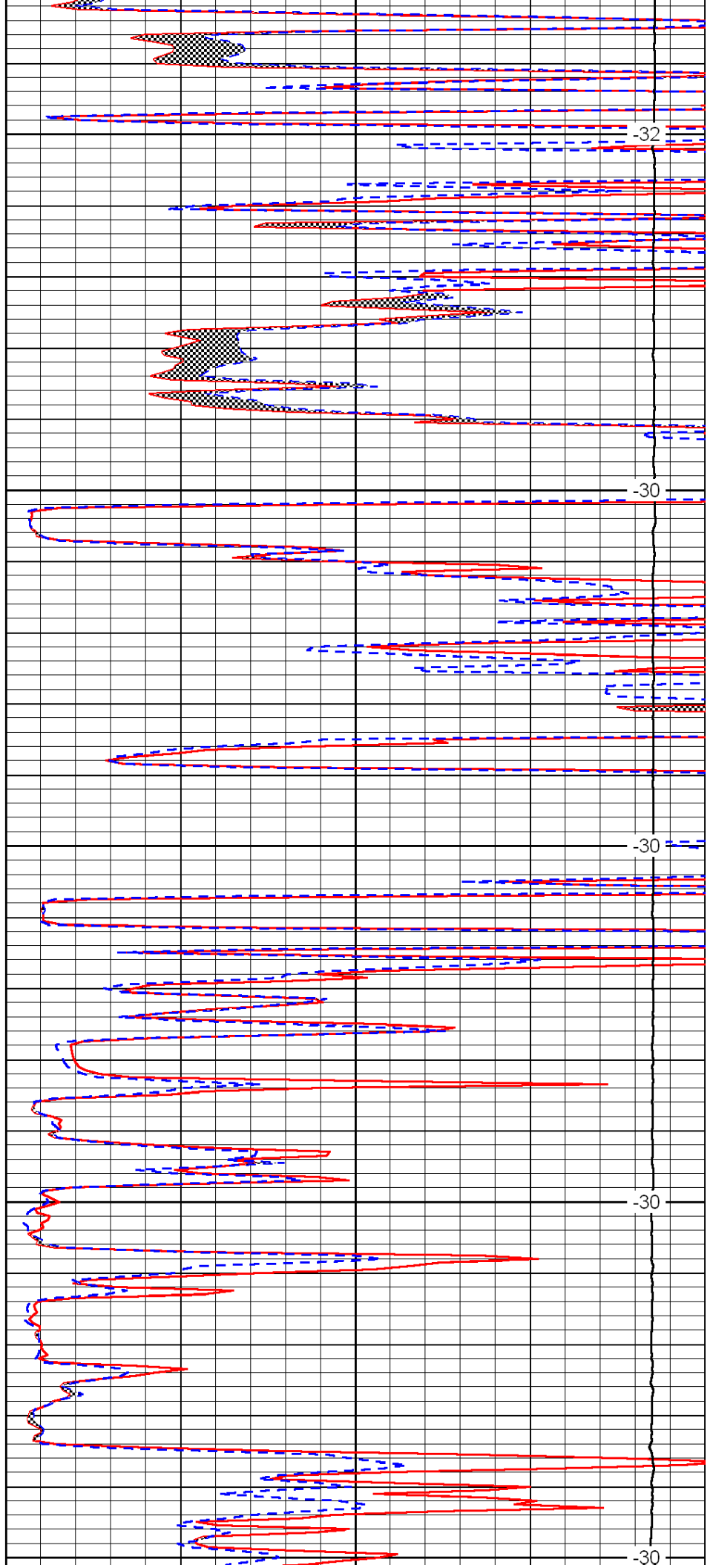
-33

-33

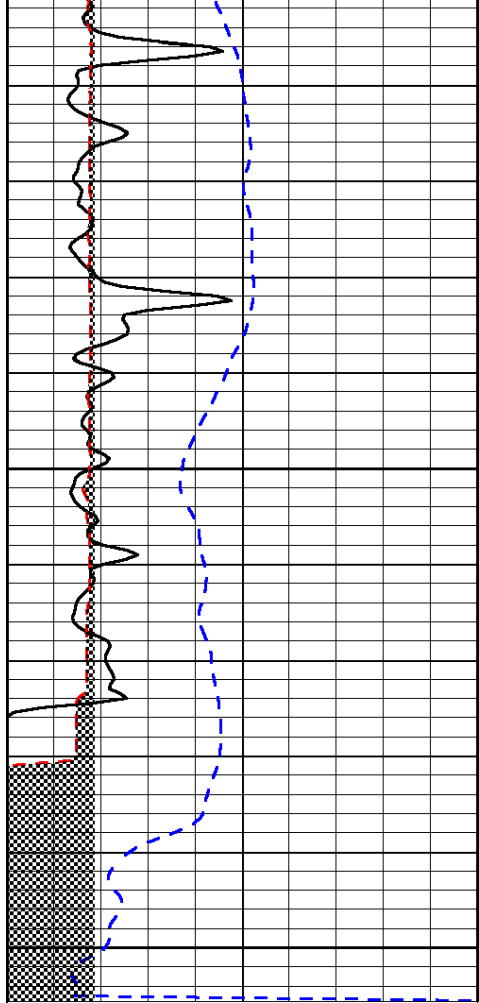




3050  
3100  
3150  
3200  
3250



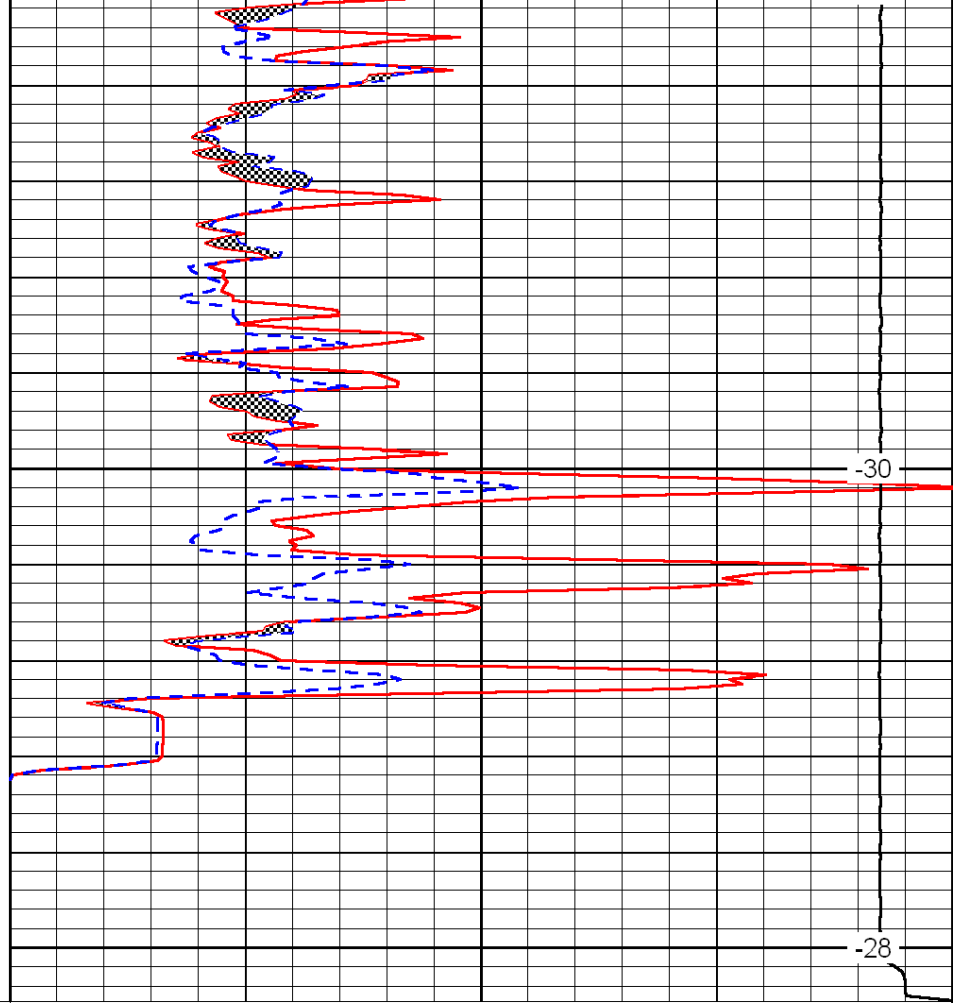
-32  
-30  
-30  
-30  
-30



0	Gamma Ray	150
6	Micro Log Caliper (GAPI)	16
-200	SP (mV)	0

3300

3350



0	Micro Inverse 1 X 1	40
0	Micro Normal 2''	40
15000	Line Weight	0

-30

-28

LSPD