



DIGITAL LOG (785) 625-3858

**Dual Compensated
Porosity Log**

API No. 15-051-26,022-00-00

Company **McCoy Petroleum Corporation**
 Well **Holcim "A" No. 1-21**
 Field **Wildcat**
 County **Ellys** State **Kansas**

Location **2260' FSL & 2260' FWL**

Sec: **21** Twp: **13S** Rge: **19W**

Other Services
DIL
MEL

Permanent Datum **Ground Level** Elevation **2161**
 Log Measured From **Kelly Bushing** 11 Ft. Above Perm. Datum
 Drilling Measured From **Kelly Bushing**

Date **08/25/2010**

Run Number **One**

Type Log **CNL / CDL**

Depth Driller **3837**

Depth Logger **3840**

Bottom Logged Interval **3819**

Top Logged Interval **3100**

Type Fluid In Hole **Chemical**

Salinity, PPM CL **5,800**

Density **9.0**

Level **Full**

Max. Rec. Temp. F **116**

Operating Rig Time **3 Hours**

Equipment -- Location **17 Hays**

Recorded By **Jason Wellbrock**

Witnessed By **Robert Hendrix**

Borehole Record				Casing Record			
Run No.	Bit	From	To	Size	Wgt.	From	To
1	12.25	00	215	8.625	24#	00	215
2	7.875	215	3837				

<<< Fold Here >>>

All interpretations are opinions based on inferences from electrical or other measurements and we cannot and do not guarantee the accuracy or correctness of any interpretation, and we shall not, except in the case of gross or willful negligence on our part, be liable or responsible for any loss, costs, damages, or expenses incurred or sustained by anyone resulting from any interpretation made by any of our officers, agents or employees. These interpretations are also subject to our general terms and conditions set out in our current Price Schedule.

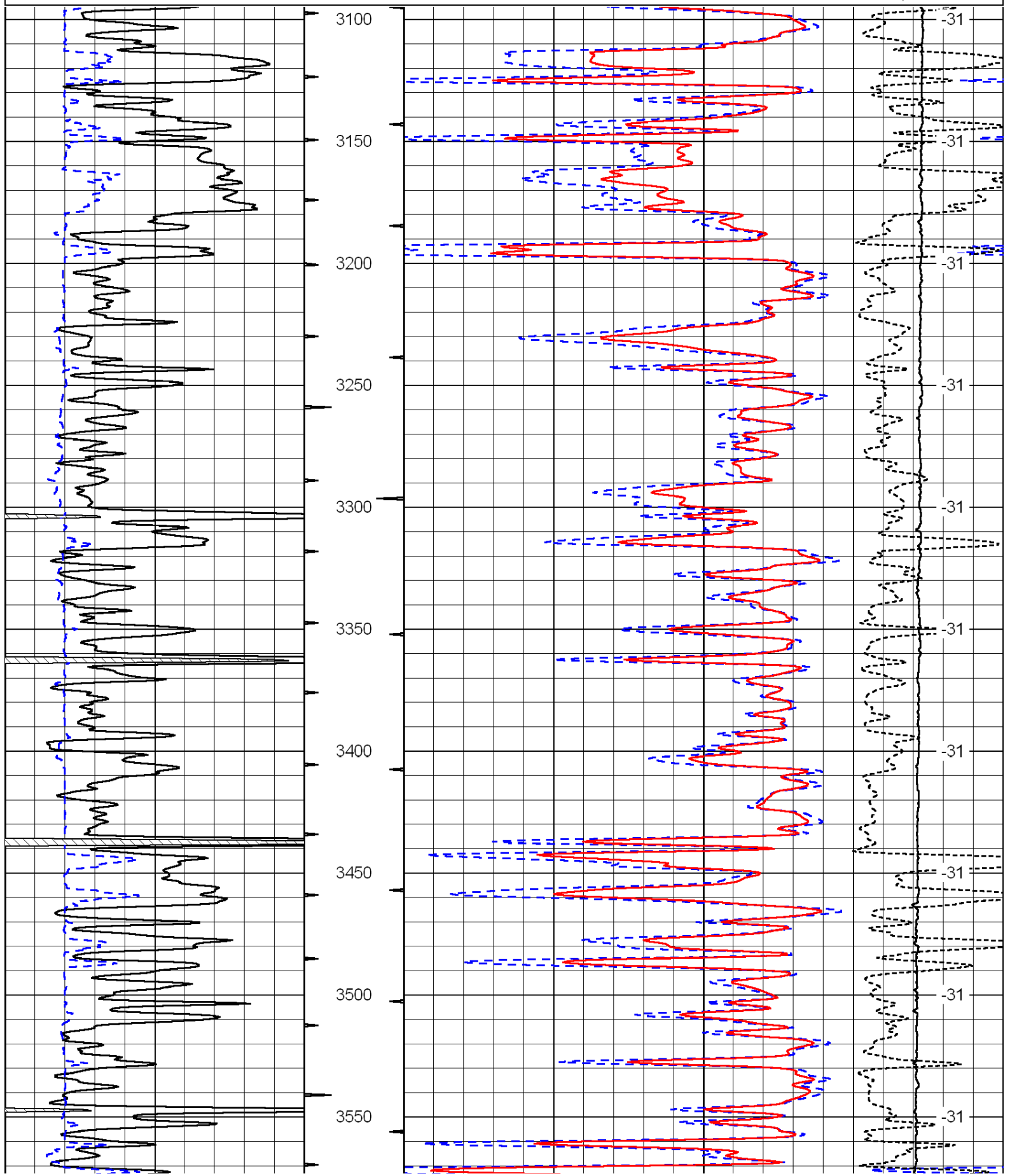
Comments

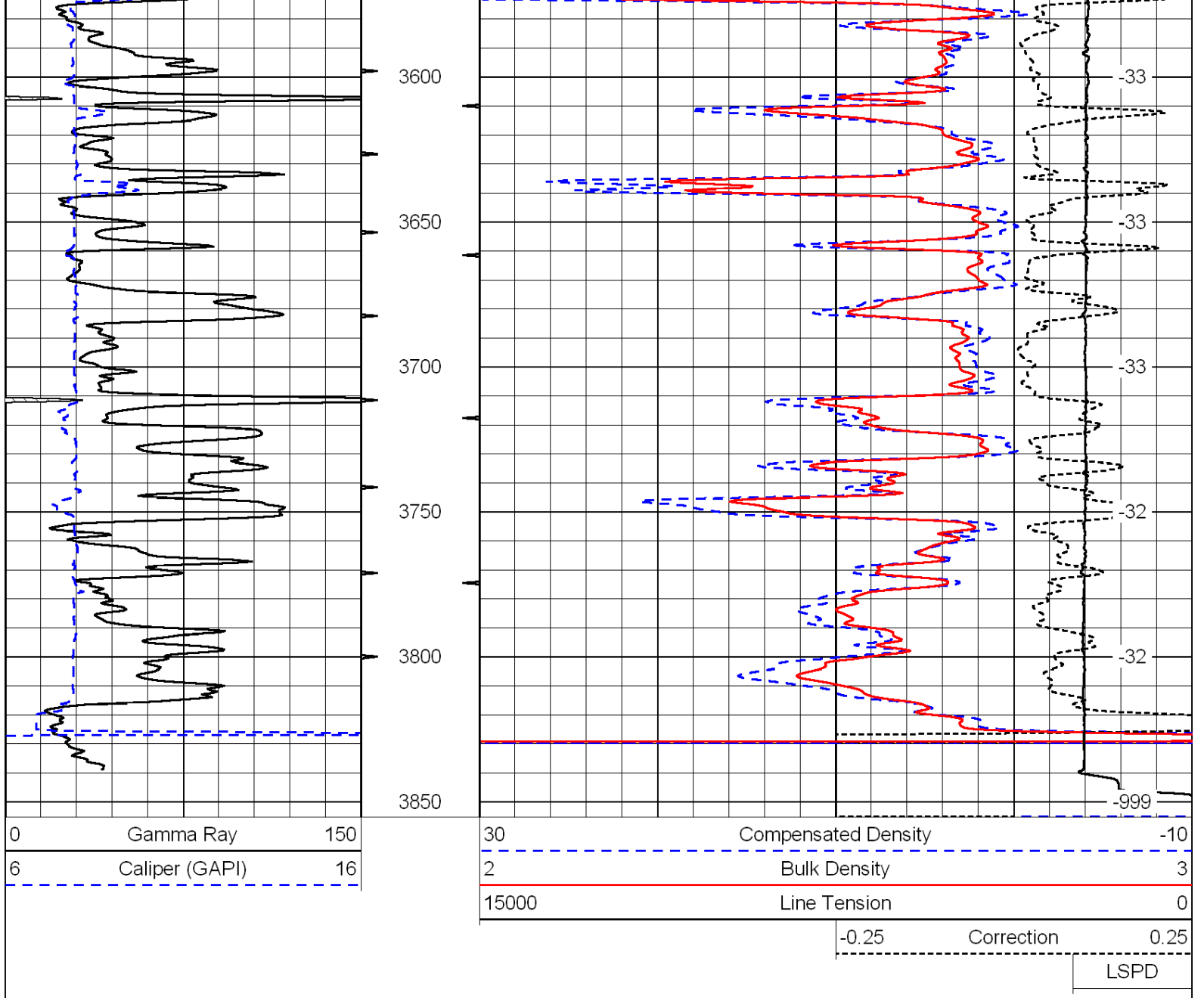
Thank you for using Log-Tech, Inc.
(785) 625-3858

Yocemento 1W, S Into

0	Gamma Ray	150
6	Caliper (GAPI)	16

30	Compensated Density	-10
2	Bulk Density	3
15000	Line Tension	0
	Correction	0.25
	LSPD	





Database File: c:\warrior\data\mccoy_holcim a no. 1-21\mccoypetrohd.db
 Dataset Pathname: dil/mccoy2in
 Presentation Format: cndlspec
 Dataset Creation: Wed Aug 25 21:45:07 2010
 Charted by: Depth in Feet scaled 1:240

