



# Microresistivity Log

**DIGITAL LOG (785) 625-3858**

API No.	15-051-26,022-00-00		
Company	McCoy Petroleum Corporation		
Well	Holcim "A" No. 1-21		
Field	Widcat		
County	Elis	State	Kansas
Location	2260' FSL & 2260' FWL		
Sec: 21	Twp: 13S	Rge: 19W	
Permanent Datum	Ground Level	Elevation	2161
Log Measured From	Kelly Bushing	11 Ft. Above Perm. Datum	
Drilling Measured From	Kelly Bushing		
		Other Services	CNL/CDL DIL
		Elevation	K.B. 2172 D.F. 2161 G.L. 2161

Date	08/25/2010
Run Number	Two
Depth Driller	3837
Depth Logger	3840
Bottom Logged Interval	3839
Top Log Interval	3100
Casing Driller	8.625 @ 215
Casing Logger	216
Bit Size	7.875
Type Fluid in Hole	Chemical
Salinity, ppm CL	5.800
Density / Viscosity	9.0   50
pH / Fluid Loss	10.5   8.0
Source of Sample	Flowline
Rm @ Meas. Temp	.85 @ 75
Rmf @ Meas. Temp	.63 @ 75
Rmc @ Meas. Temp	1.14 @ 75
Source of Rmf / Rmc	Charts
Rm @ BHT	.55 @ 116
Operating Rig Time	3 Hours
Max Rec. Temp. F	116
Equipment Number	17
Location	Hays
Recorded By	Jason Wellbrock
Witnessed By	Robert Hendrix

<<< Fold Here >>>

All interpretations are opinions based on inferences from electrical or other measurements and we cannot and do not guarantee the accuracy or correctness of any interpretation, and we shall not, except in the case of gross or willful negligence on our part, be liable or responsible for any loss, costs, damages, or expenses incurred or sustained by anyone resulting from any interpretation made by any of our officers, agents or employees. These interpretations are also subject to our general terms and conditions set out in our current Price Schedule.

**Comments**

Thank you for using Log-Tech, Inc.  
(785) 625-3858

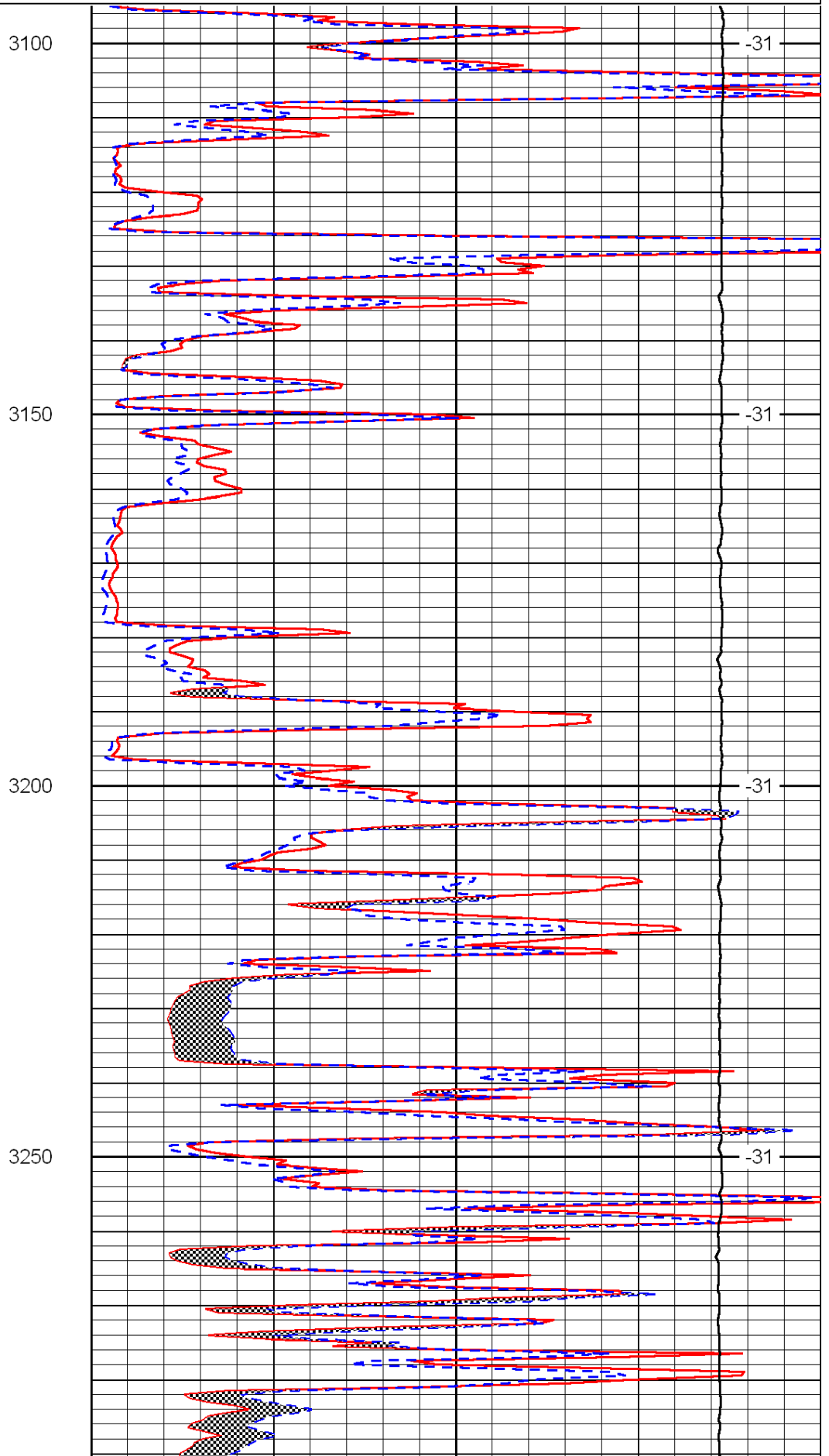
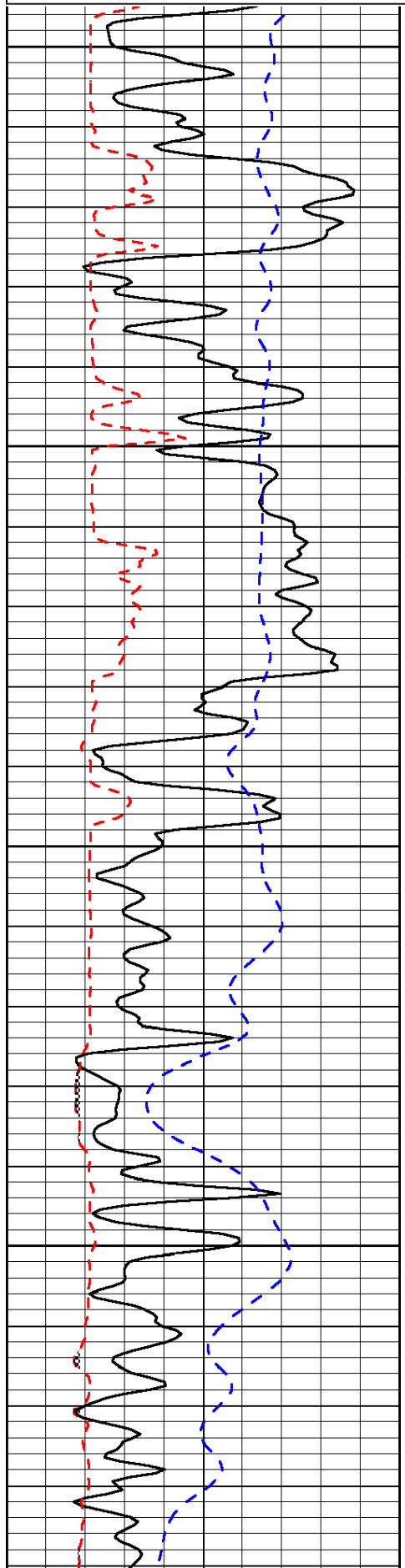
Yocemento 1W, S Into

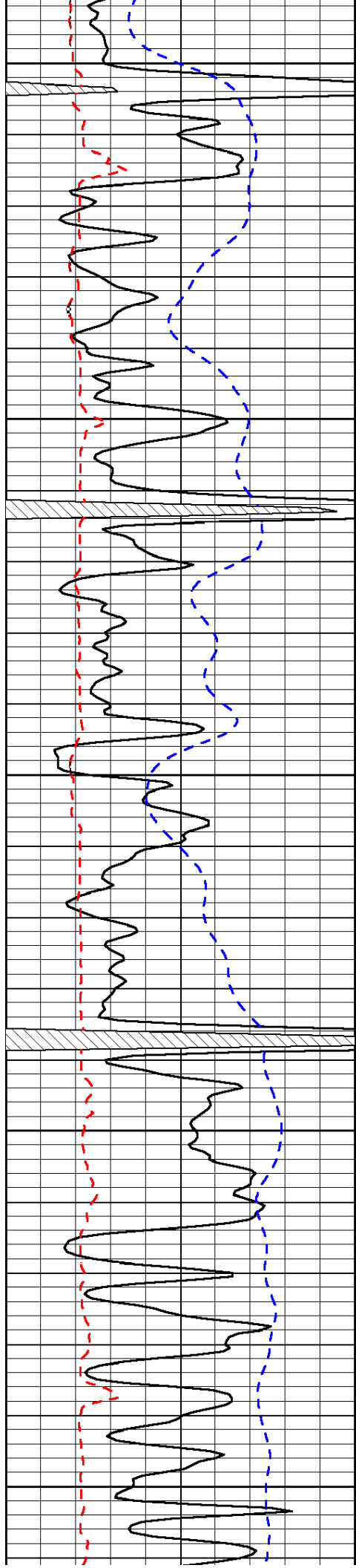
Database File: c:\warrior\data\mccoy\_holcim a no. 1-21\mccoypetrohd.db  
 Dataset Pathname: dil/mccoy2in  
 Presentation Format: micro  
 Dataset Creation: Wed Aug 25 21:45:07 2010  
 Charted by: Depth in Feet scaled 1:240

0	Gamma Ray	150
6	Micro Log Caliper (GAPI)	16
-200	SP (mV)	0

0	Micro Inverse 1 X 1	40
0	Micro Normal 2"	40
15000	Line Weight	0

LSPD





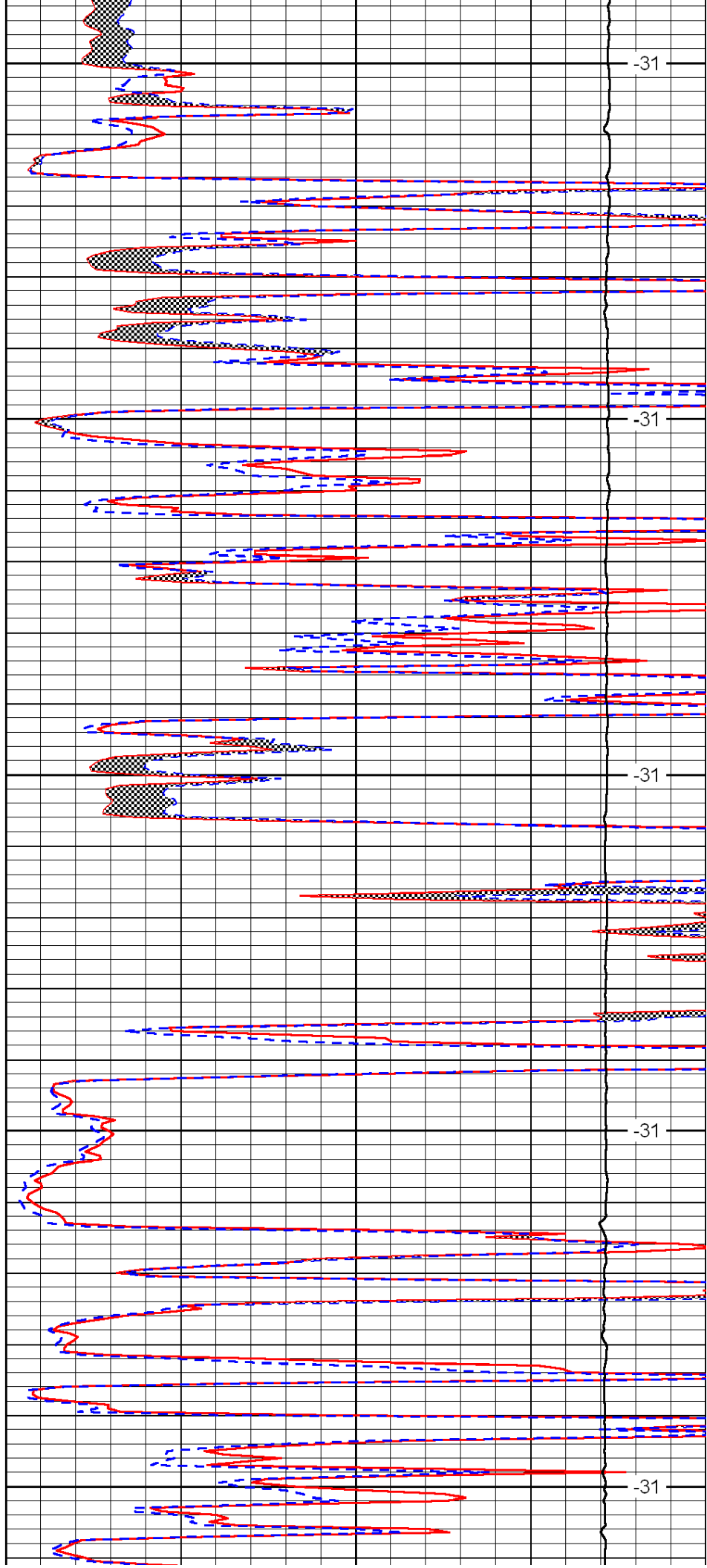
3300

3350

3400

3450

3500



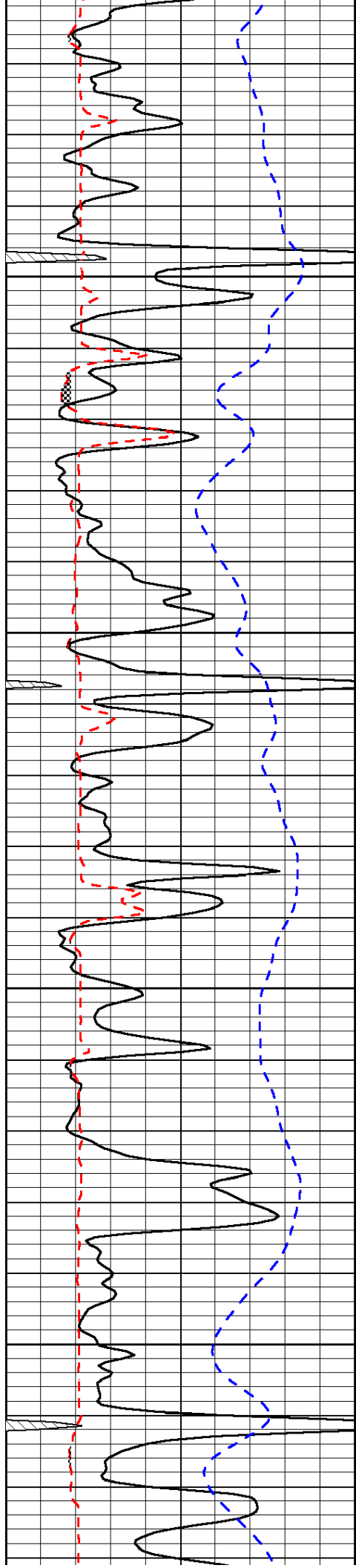
-31

-31

-31

-31

-31

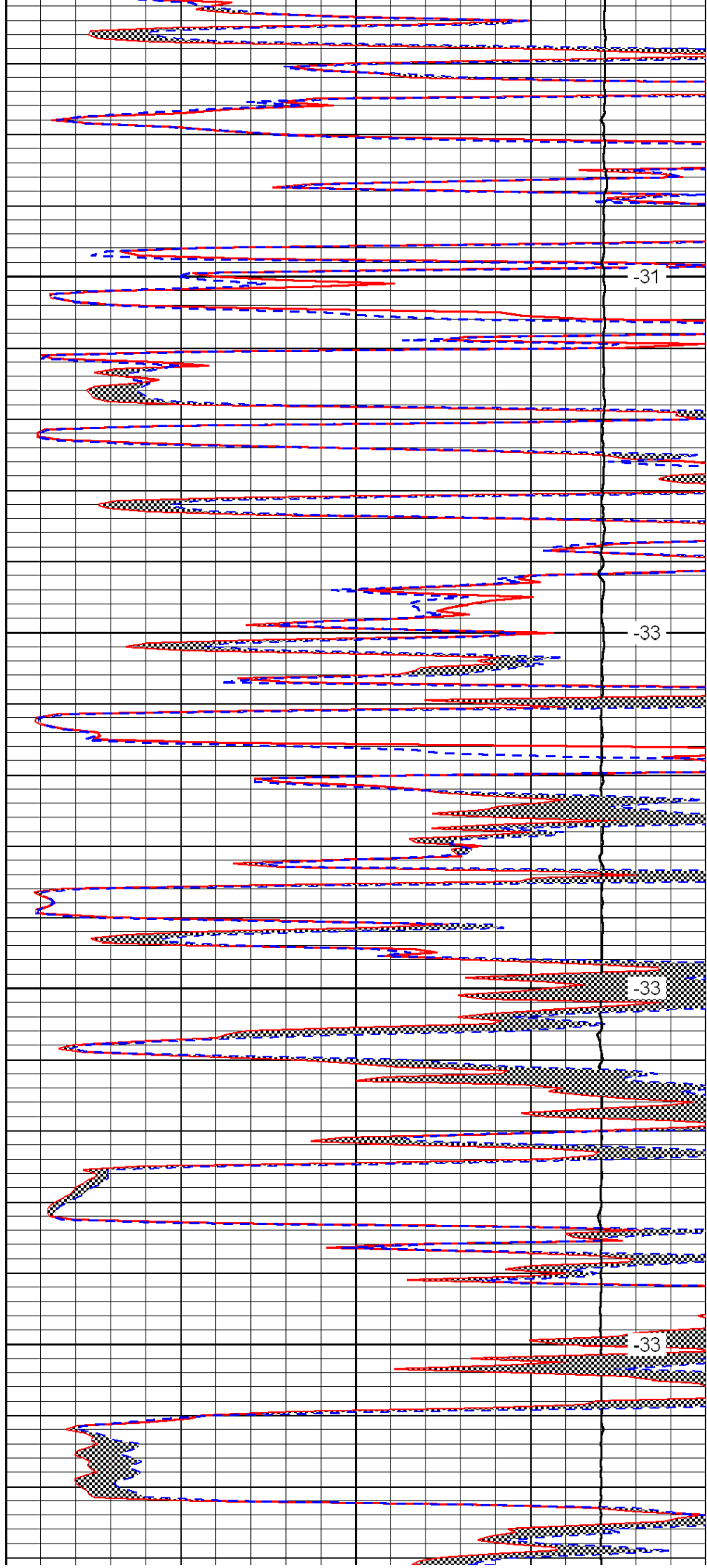


3550

3600

3650

3700

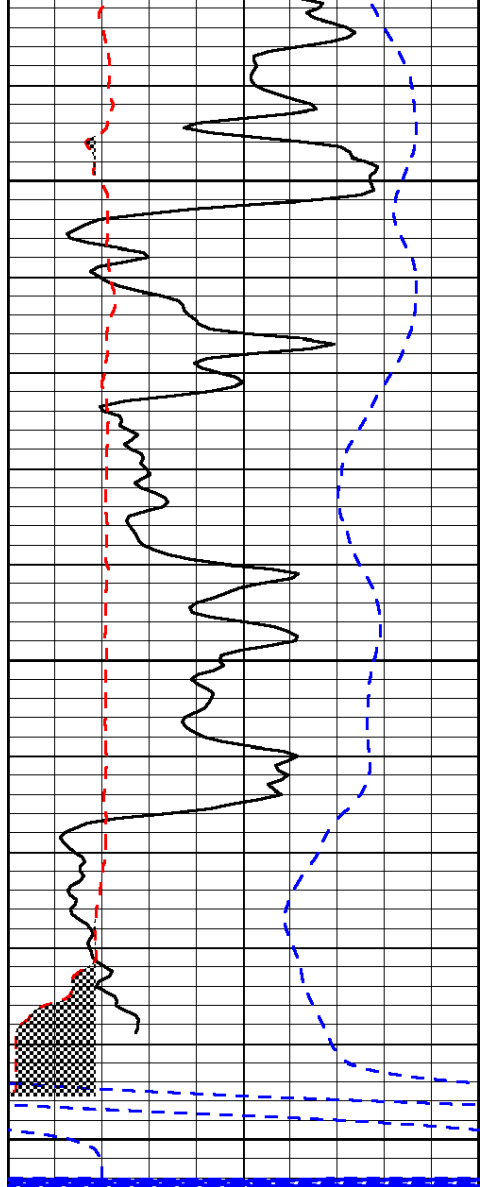


-31

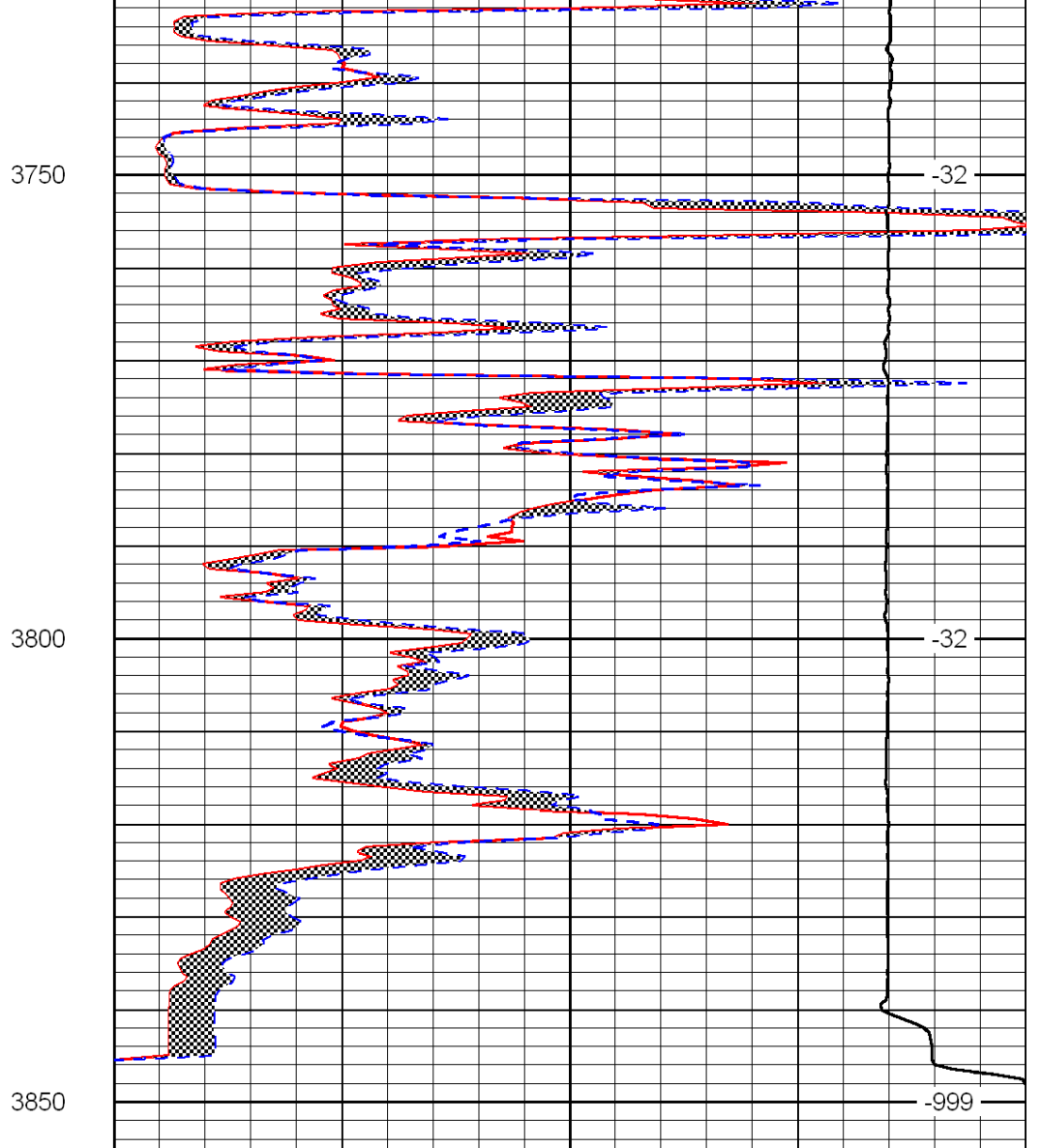
-33

-33

-33



0	Gamma Ray	150
6	Micro Log Caliper (GAPI)	16
-200	SP (mV)	0



0	Micro Inverse 1 X 1	40
0	Micro Normal 2''	40
15000	Line Weight	0

LSPD