



Dual Induction Log

DIGITAL LOG (785) 625-3858

API No.	15-009-25,454-00-00	
Company	Reif Oil & Gas Inc.	
Well	Huslig No. 1	
Field	Huslig	
County	Barton	State Kansas
Location	NW SE SW SE 360' FSL & 1830' FEL	
Sec: 13	Twp: 17S	Rge: 12W
Other Services	CNL/CDL MEL/BHCS	

Permanent Datum	Ground Level	Elevation	1851
Log Measured From	Kelly Bushing	5	Ft. Above Perm. Datum
Drilling Measured From	Kelly Bushing		
Date	07/29/2010		
Run Number	One		
Depth Driller	3415		
Depth Logger	3412		
Bottom Logged Interval	3411		
Top Log Interval	350		
Casing Driller	8.625 @ 367		
Casing Logger	362		
Bit Size	7.875		
Type Fluid in Hole	Chemical		
Salinity, ppm CL	8.800		
Density / Viscosity	9.3	47	
pH / Fluid Loss	10.0	10.4	
Source of Sample	Flowline		
Rm @ Meas. Temp	.85	@	78
Rmf @ Meas. Temp	.64	@	78
Rmc @ Meas. Temp	1.15	@	78
Source of Rmf / Rmc	Charts		
Rm @ BHT	.59	@	112
Operating Rig Time	4 Hours		
Max Rec. Temp. F	112		
Equipment Number	17		
Location	Hays		
Recorded By	Mike Garrison		
Witnessed By	Jim Musgrove		

<<< Fold Here >>>

All interpretations are opinions based on inferences from electrical or other measurements and we cannot and do not guarantee the accuracy or correctness of any interpretation, and we shall not, except in the case of gross or willful negligence on our part, be liable or responsible for any loss, costs, damages, or expenses incurred or sustained by anyone resulting from any interpretation made by any of our officers, agents or employees. These interpretations are also subject to our general terms and conditions set out in our current Price Schedule.

Comments

Thank you for using Log-Tech, Inc.
(785) 625-3858

Ogden, 3/4 East, North Into

Database File: c:\warrior\data\reif_huslig no. 1\reifhd.db
 Dataset Pathname: dil/reifstck
 Presentation Format: dil2in
 Dataset Creation: Thu Jul 29 03:31:51 2010
 Charted by: Depth in Feet scaled 1:600

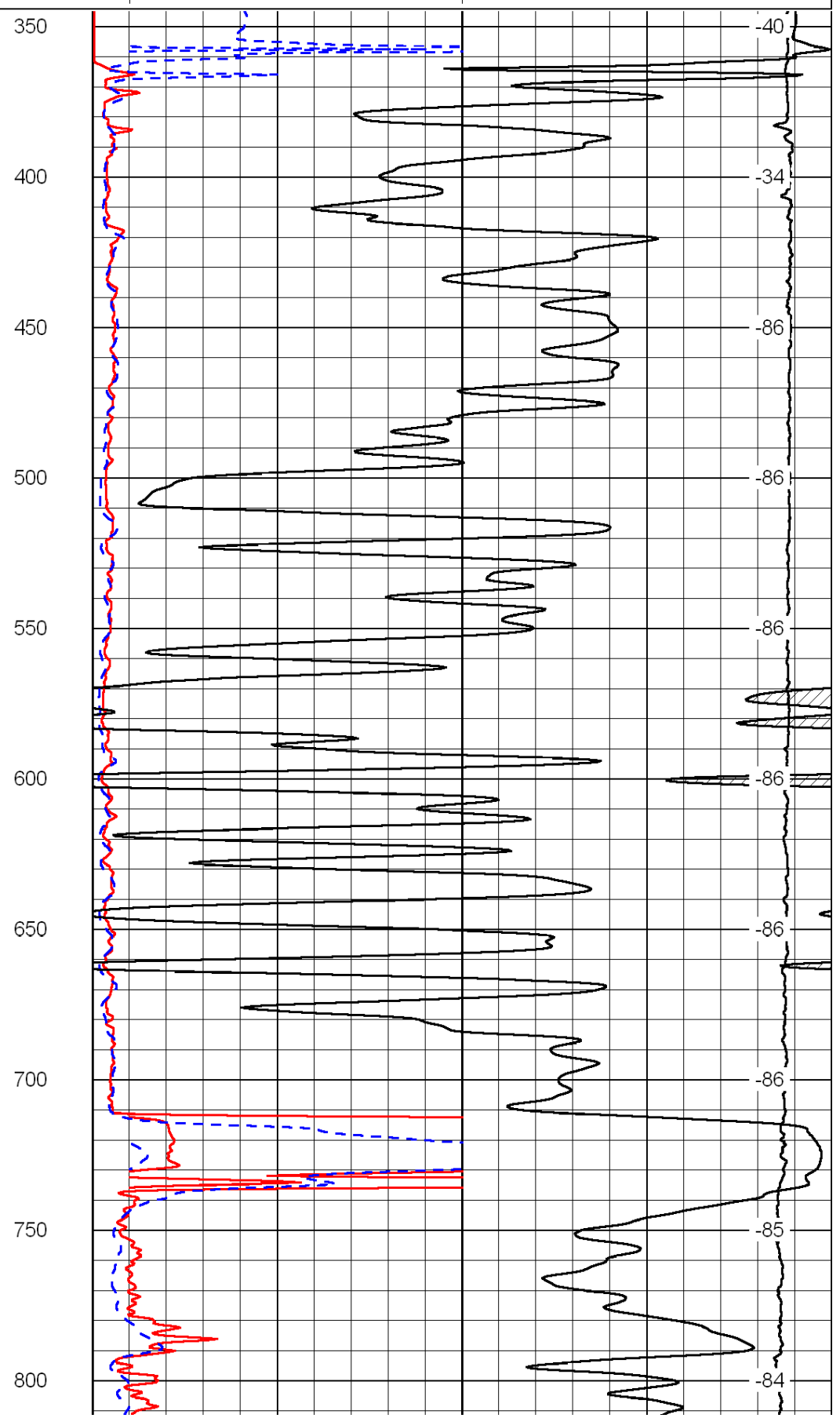
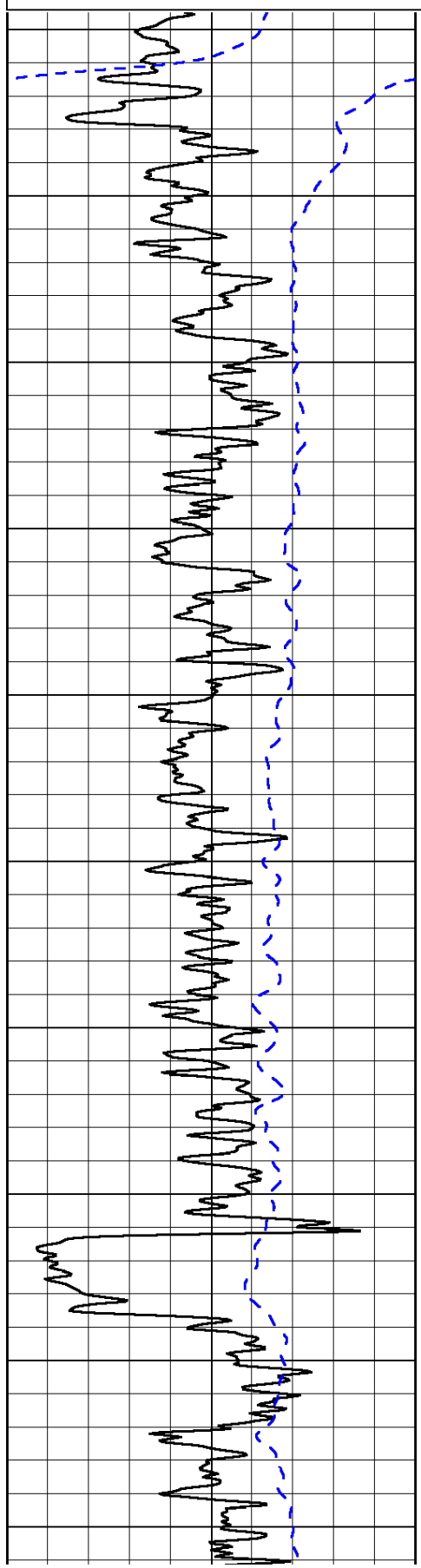
0	Gamma Ray	150
-200	SP (mV)	0

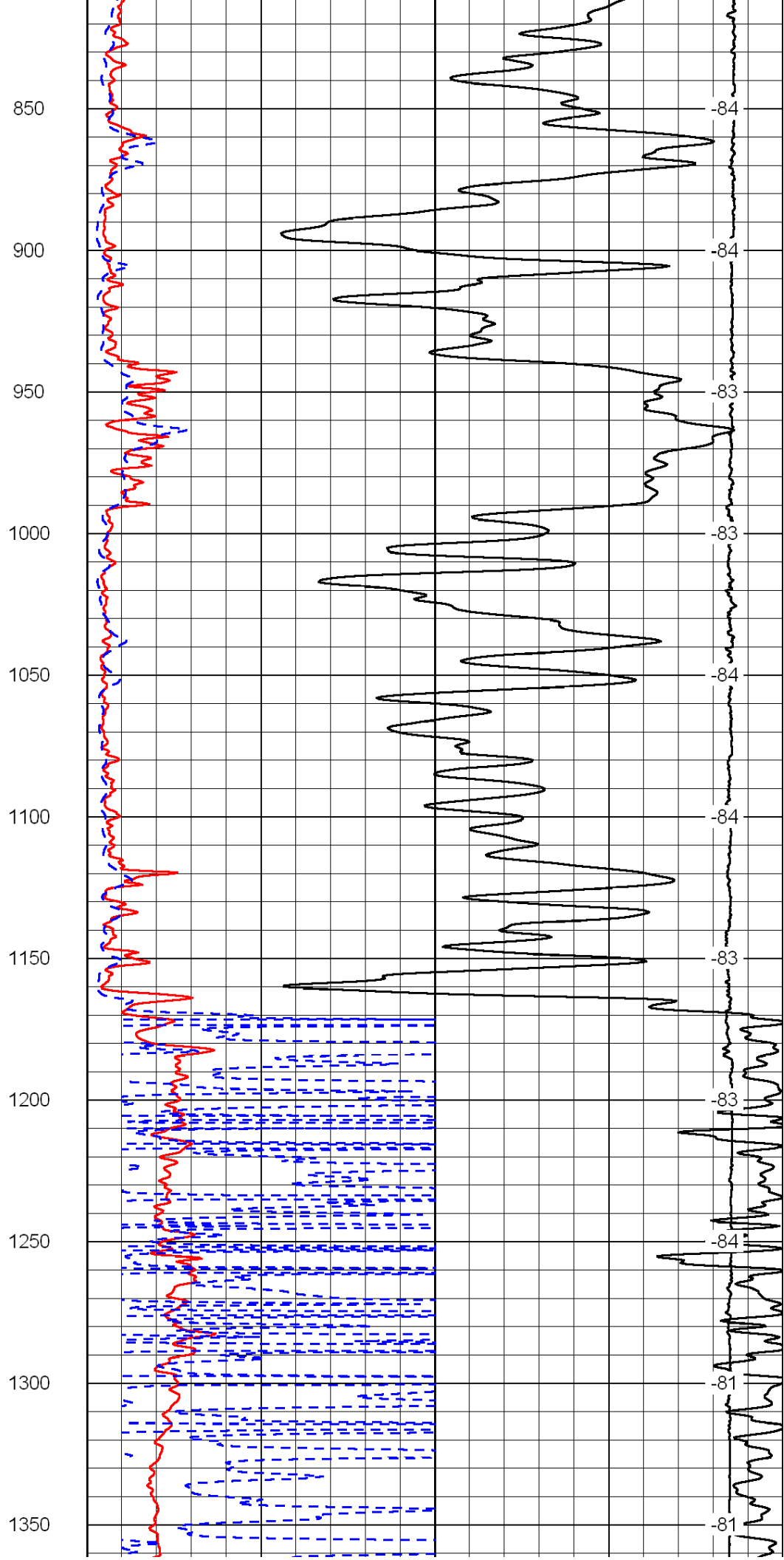
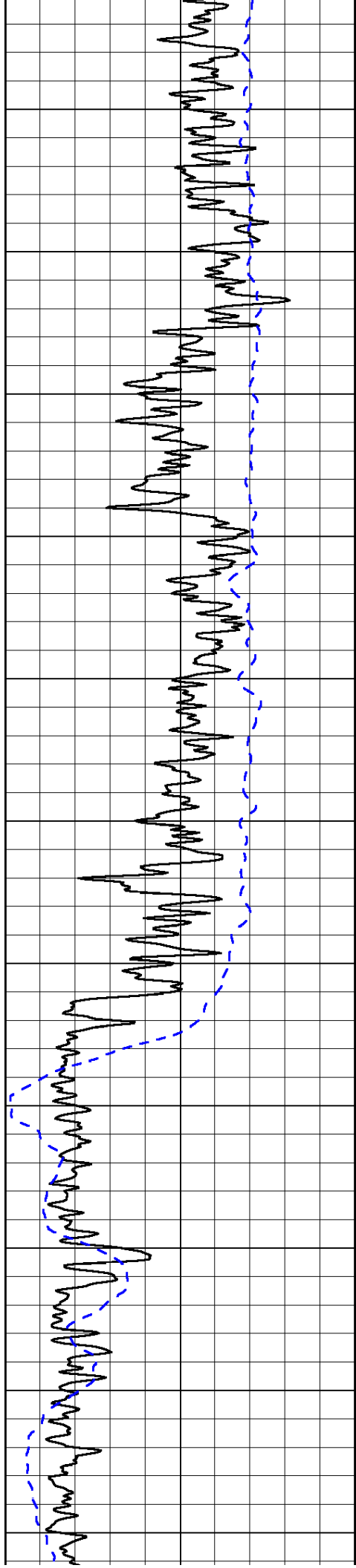
0	Shallow Resistivity	50
0	Deep Resistivity	50

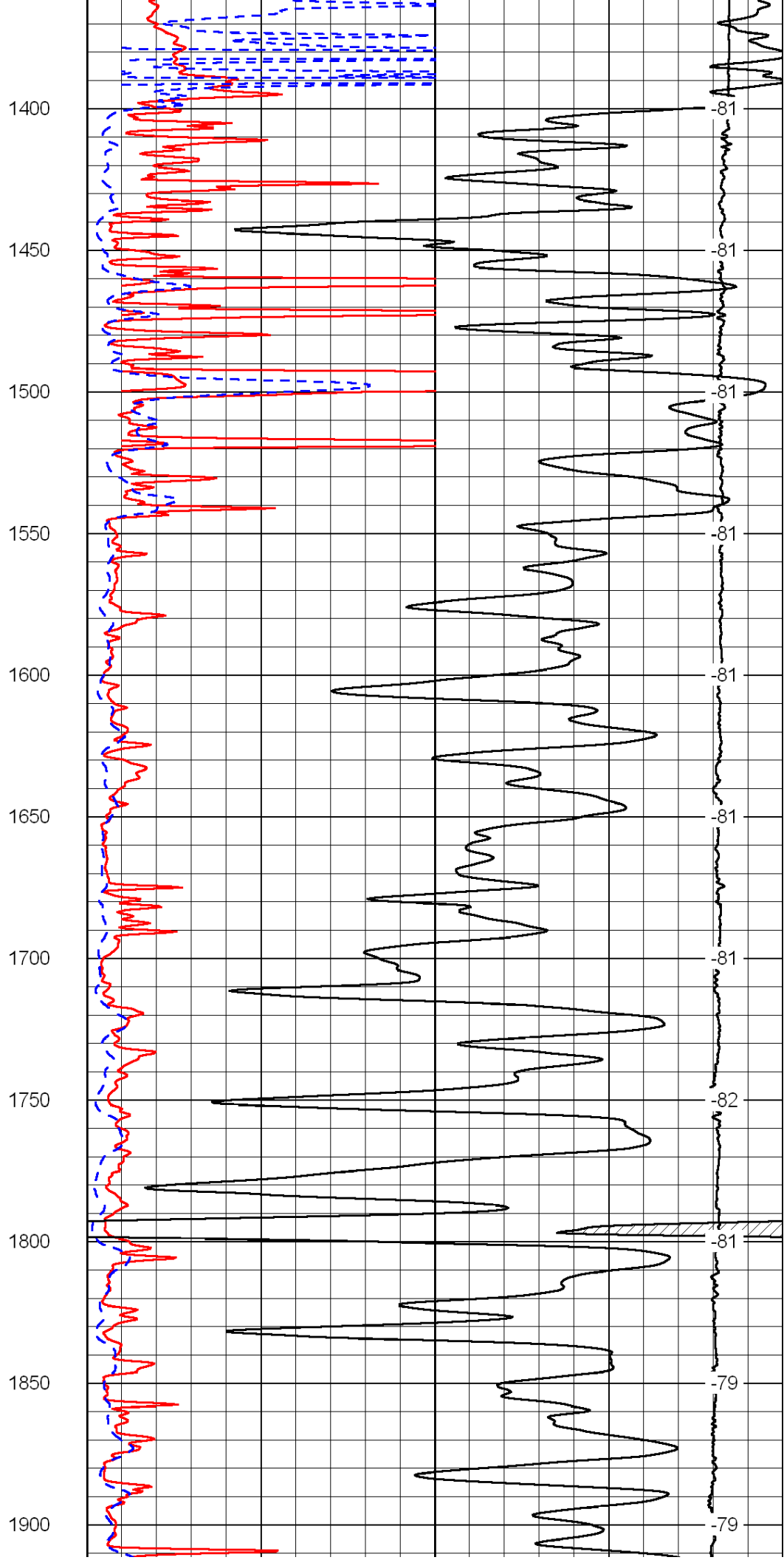
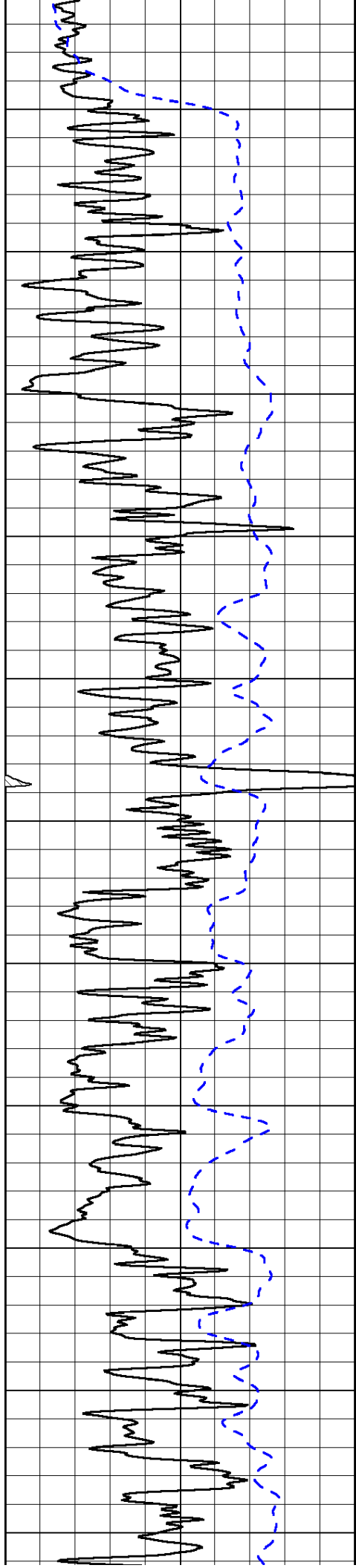
LSPD

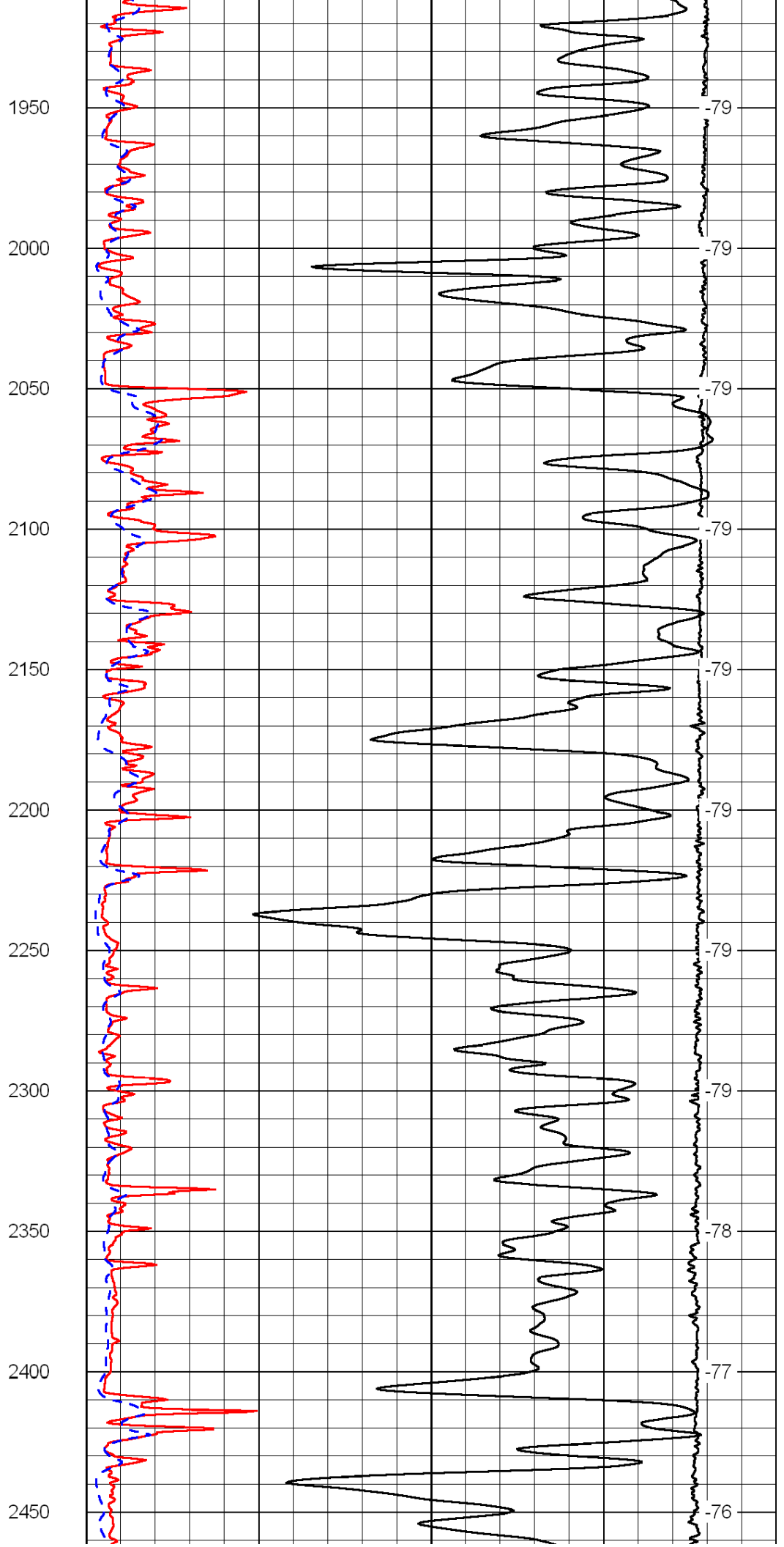
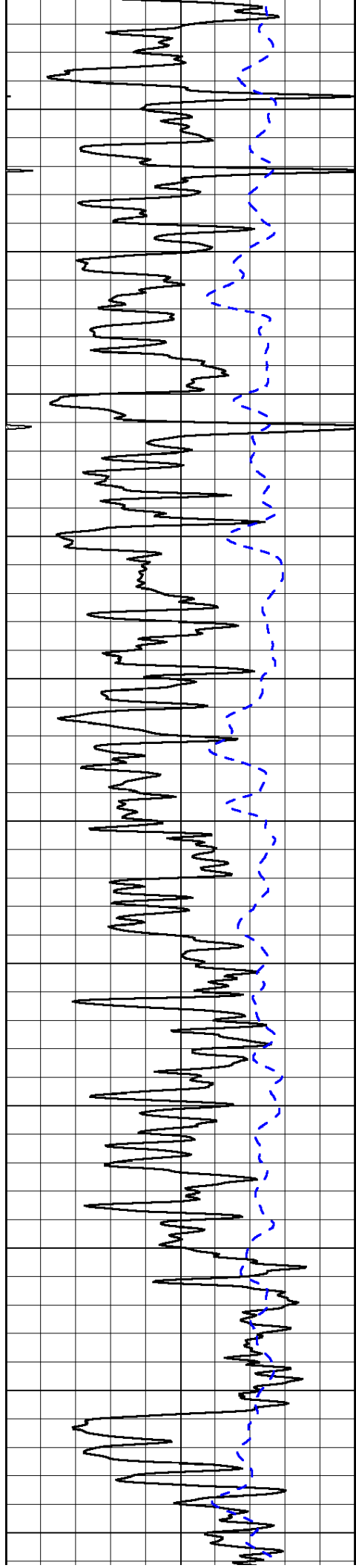
1000	Conductivity	0
15000	Line Tension	0

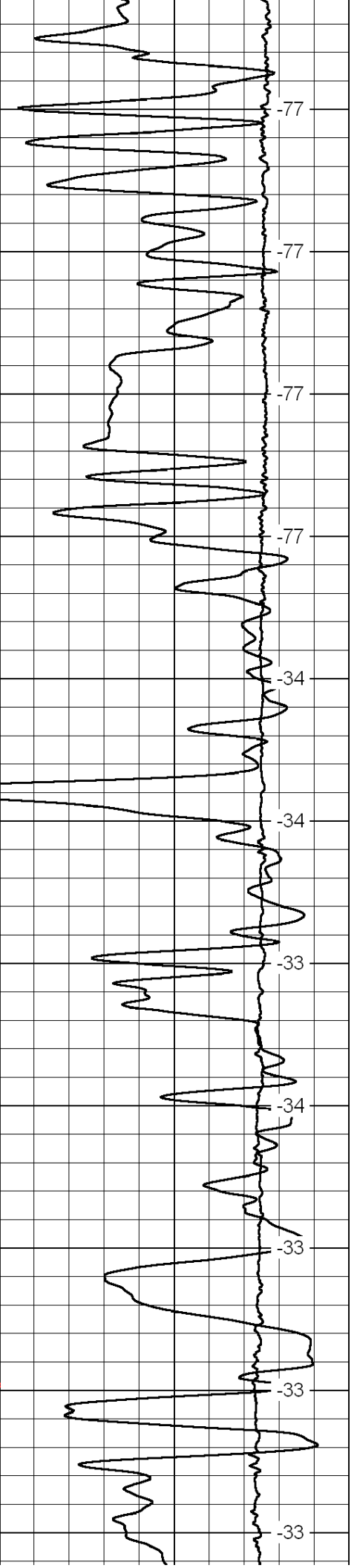
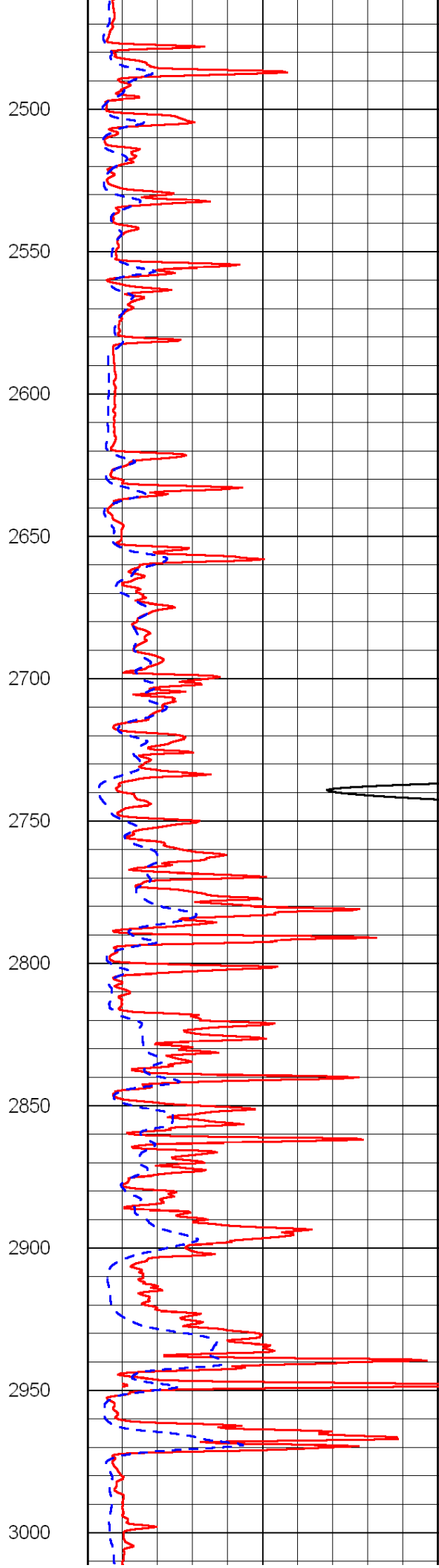
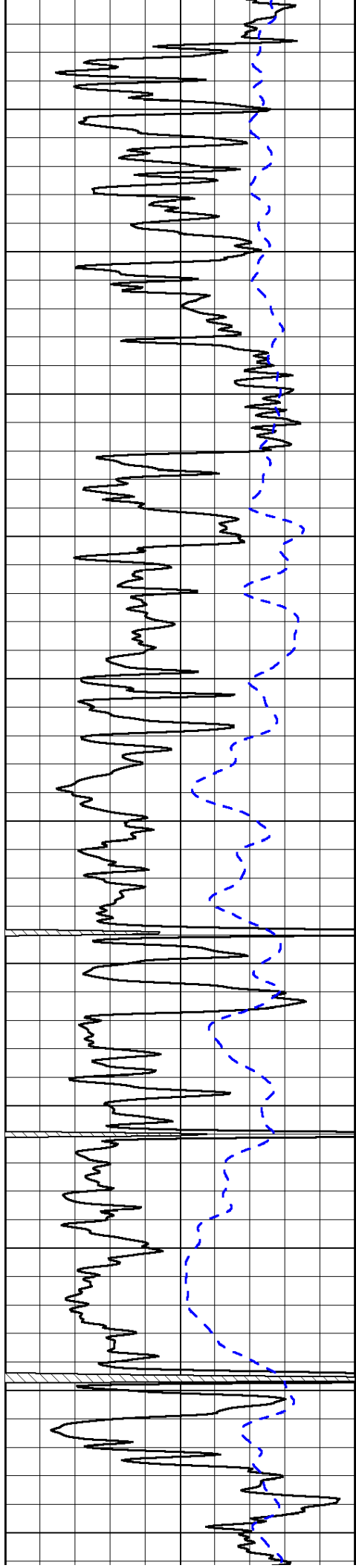
50	Shallow Resistivity	500
50	Deep Resistivity	500

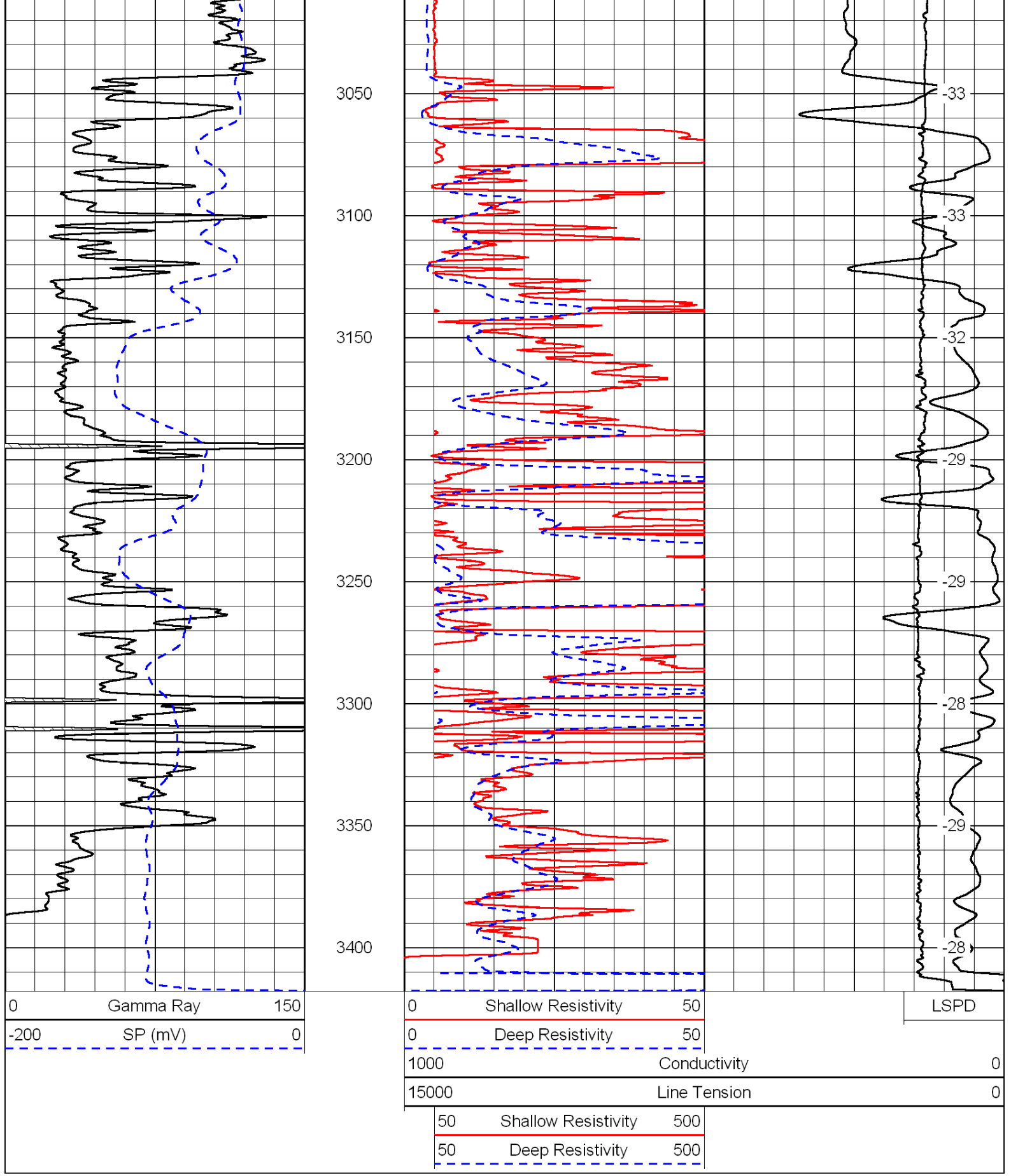










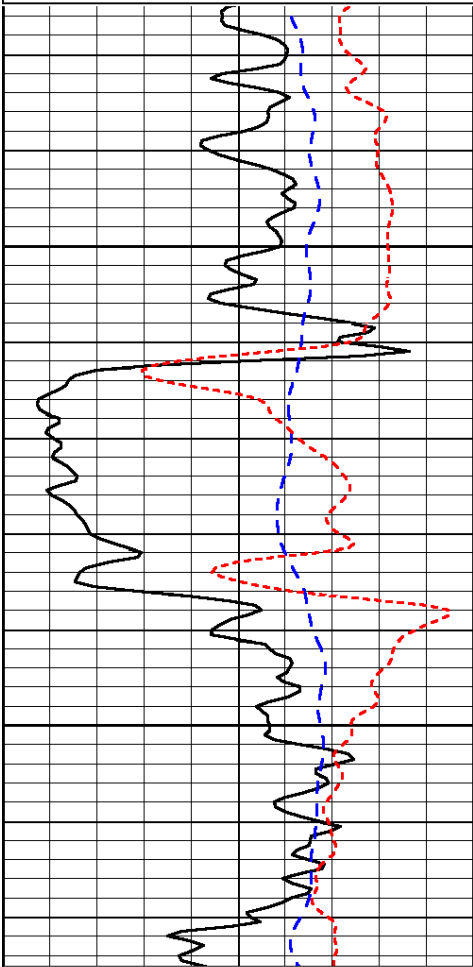


Database File: c:\warrior\data\reif_huslig no. 1\reifhd.db
 Dataset Pathname: dil/reifstck
 Presentation Format: dil
 Dataset Creation: Thu Jul 29 03:31:51 2010
 Charted by: Depth in Feet scaled 1:240

0	Gamma Ray	150
-200	SP (mV)	0
-160	Rxo / Rt	40

0.2	Deep Resistivity	2000
0.2	Medium Resistivity	2000
0.2	Shallow Resistivity	2000
15000	Line Tension	0

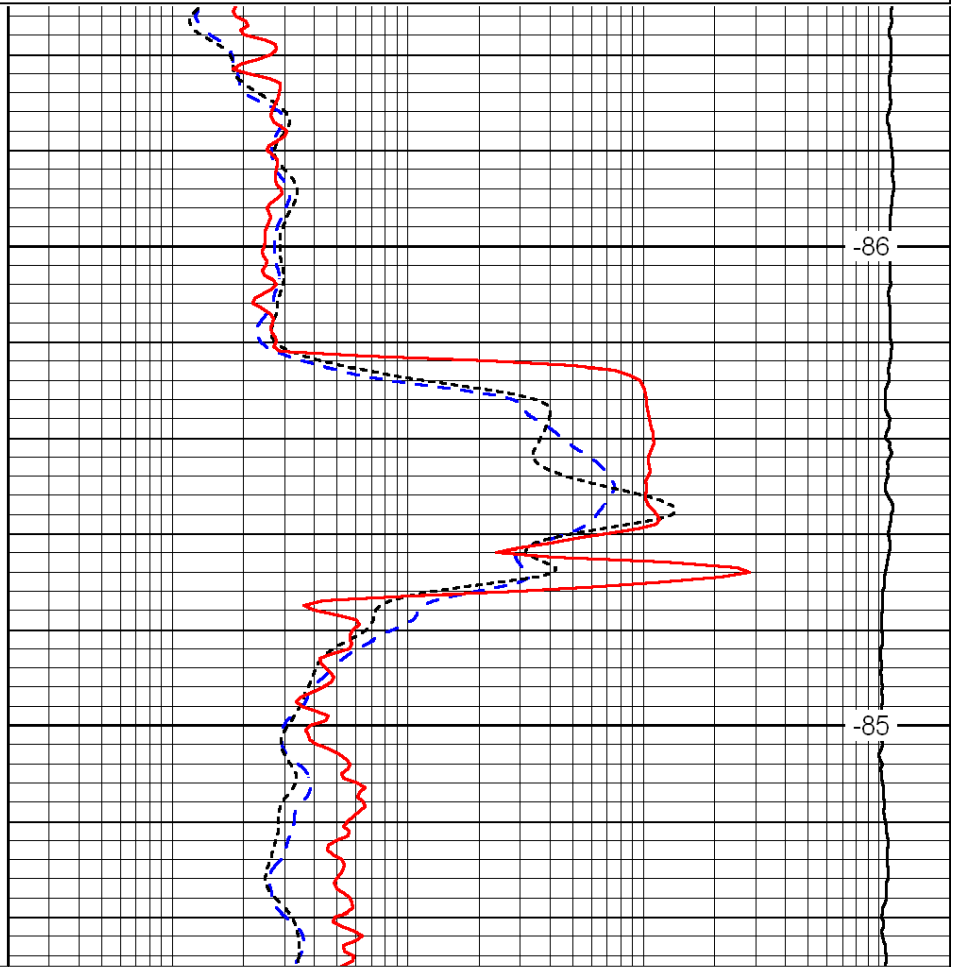
LSPD



700

750

0	Gamma Ray	150
-200	SP (mV)	0
-160	Rxo / Rt	40



-86

-85

0.2	Deep Resistivity	2000
0.2	Medium Resistivity	2000
0.2	Shallow Resistivity	2000
15000	Line Tension	0

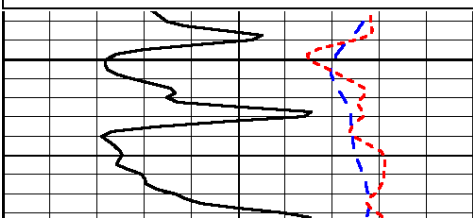
LSPD

Database File: c:\warrior\data\reif_huslig no. 1\reifhd.db
 Dataset Pathname: dil/reifstck
 Presentation Format: dil
 Dataset Creation: Thu Jul 29 03:31:51 2010
 Charted by: Depth in Feet scaled 1:240

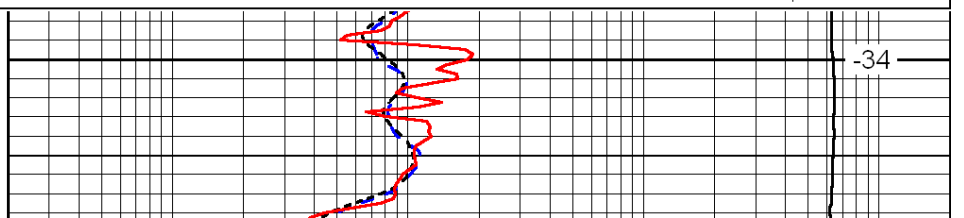
0	Gamma Ray	150
-200	SP (mV)	0
-160	Rxo / Rt	40

0.2	Deep Resistivity	2000
0.2	Medium Resistivity	2000
0.2	Shallow Resistivity	2000
15000	Line Tension	0

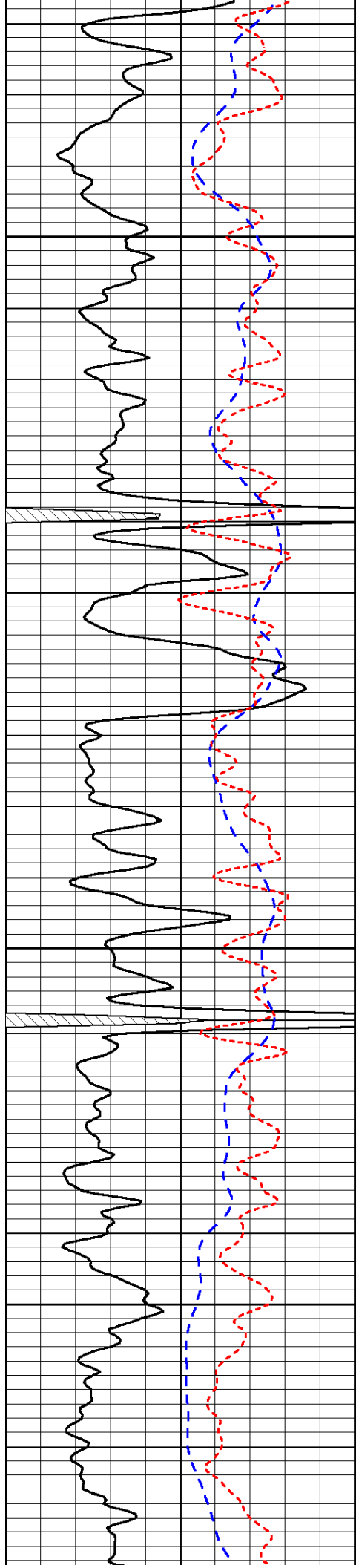
LSPD



2700



-34

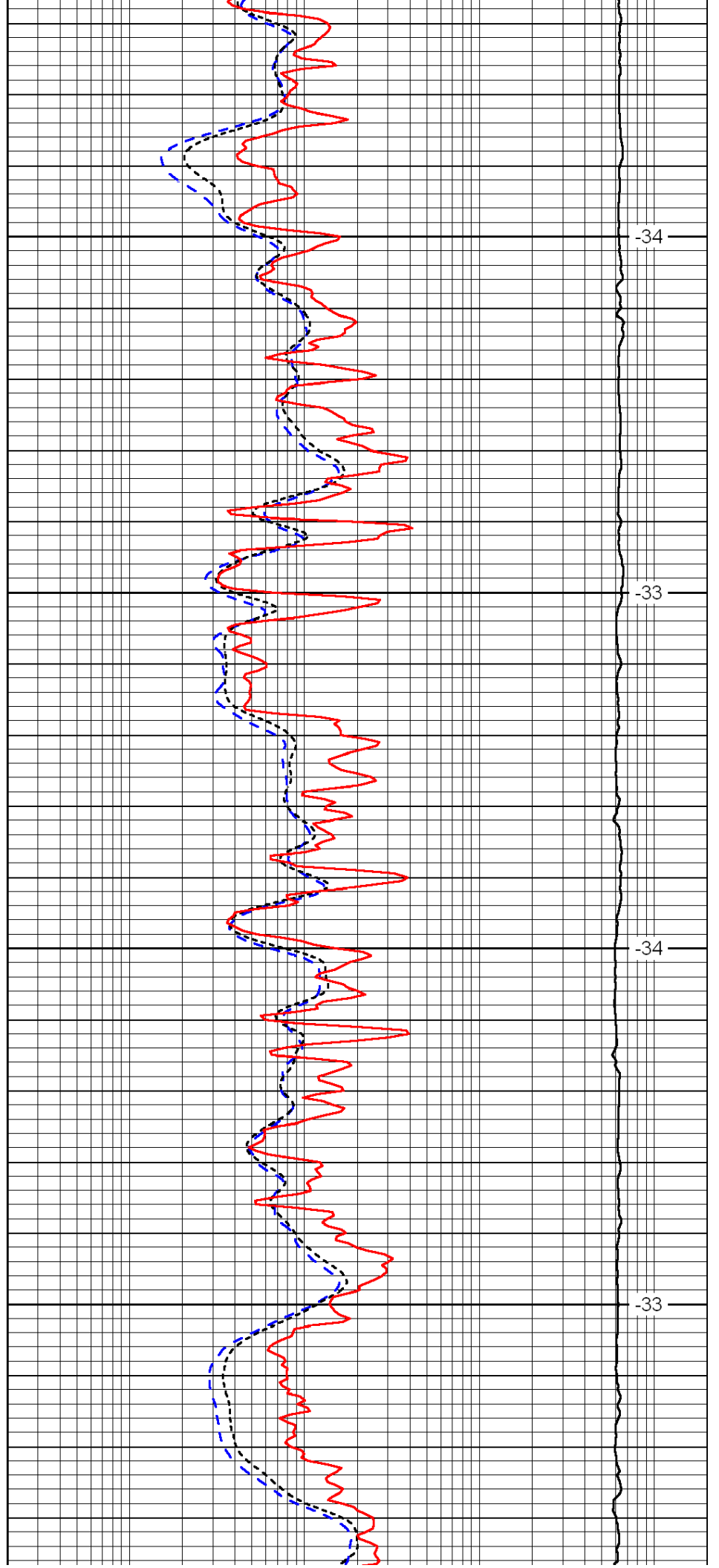


2750

2800

2850

2900

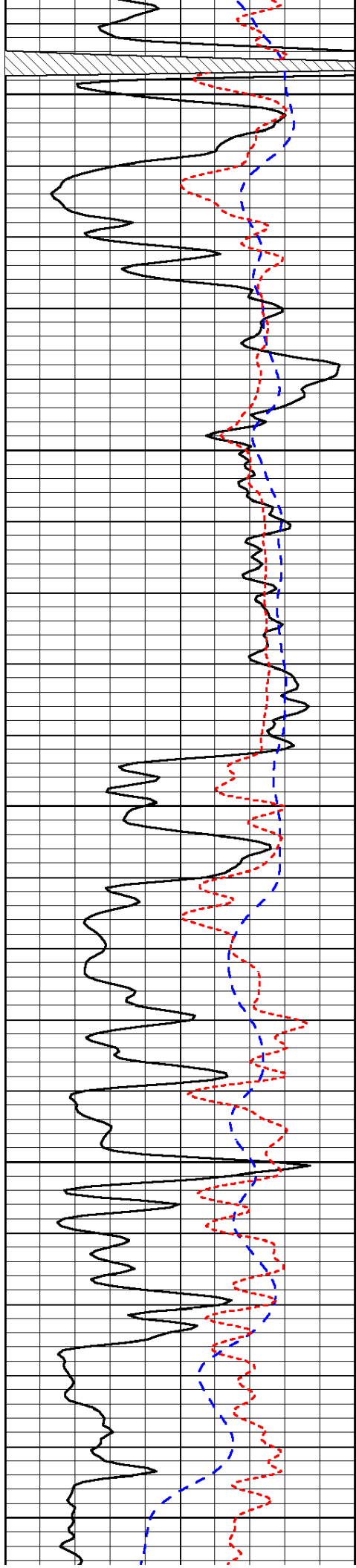


-34

-33

-34

-33



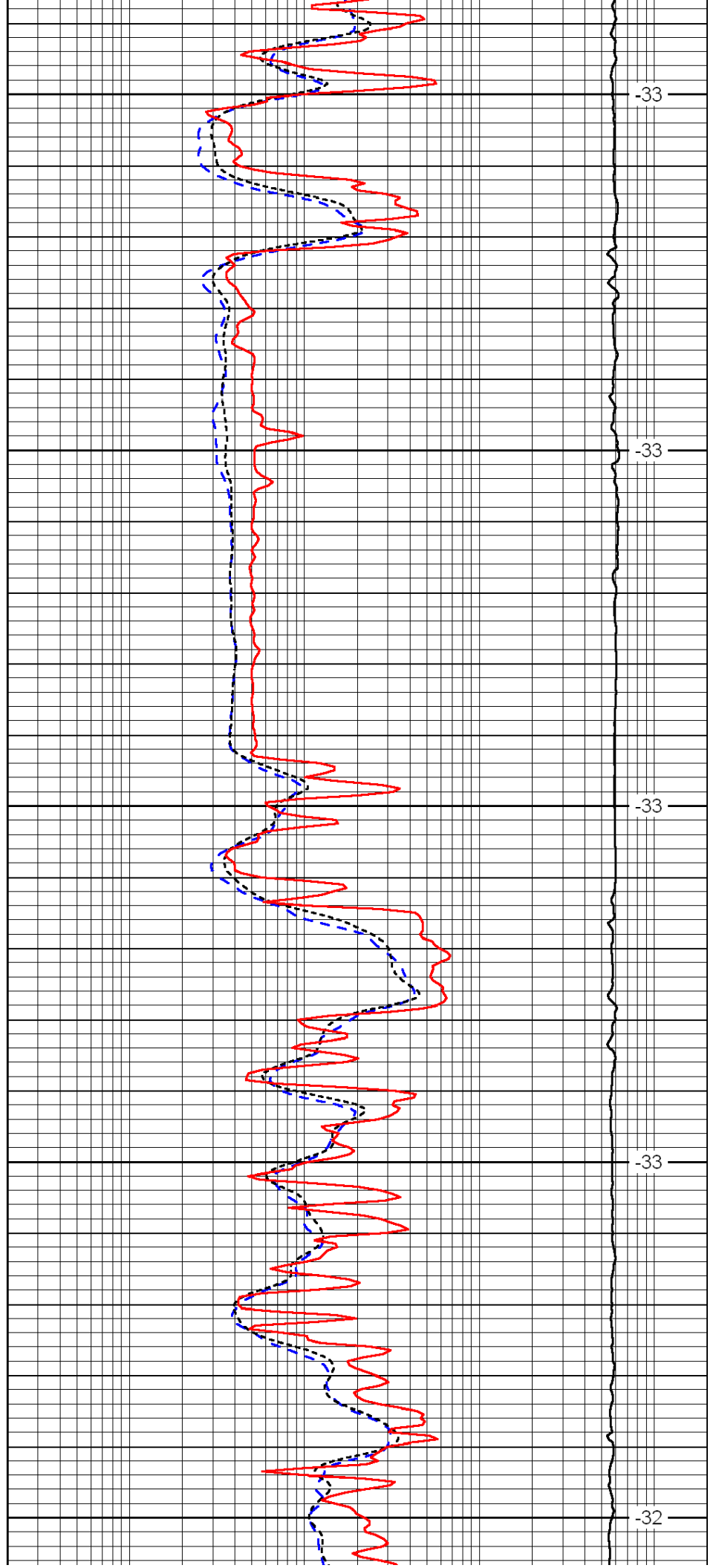
2950

3000

3050

3100

3150



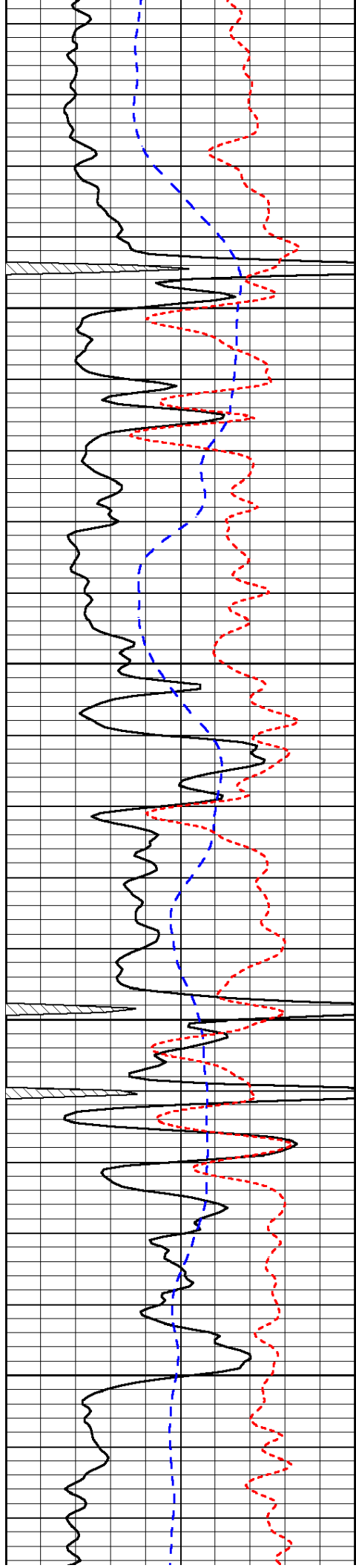
-33

-33

-33

-33

-32

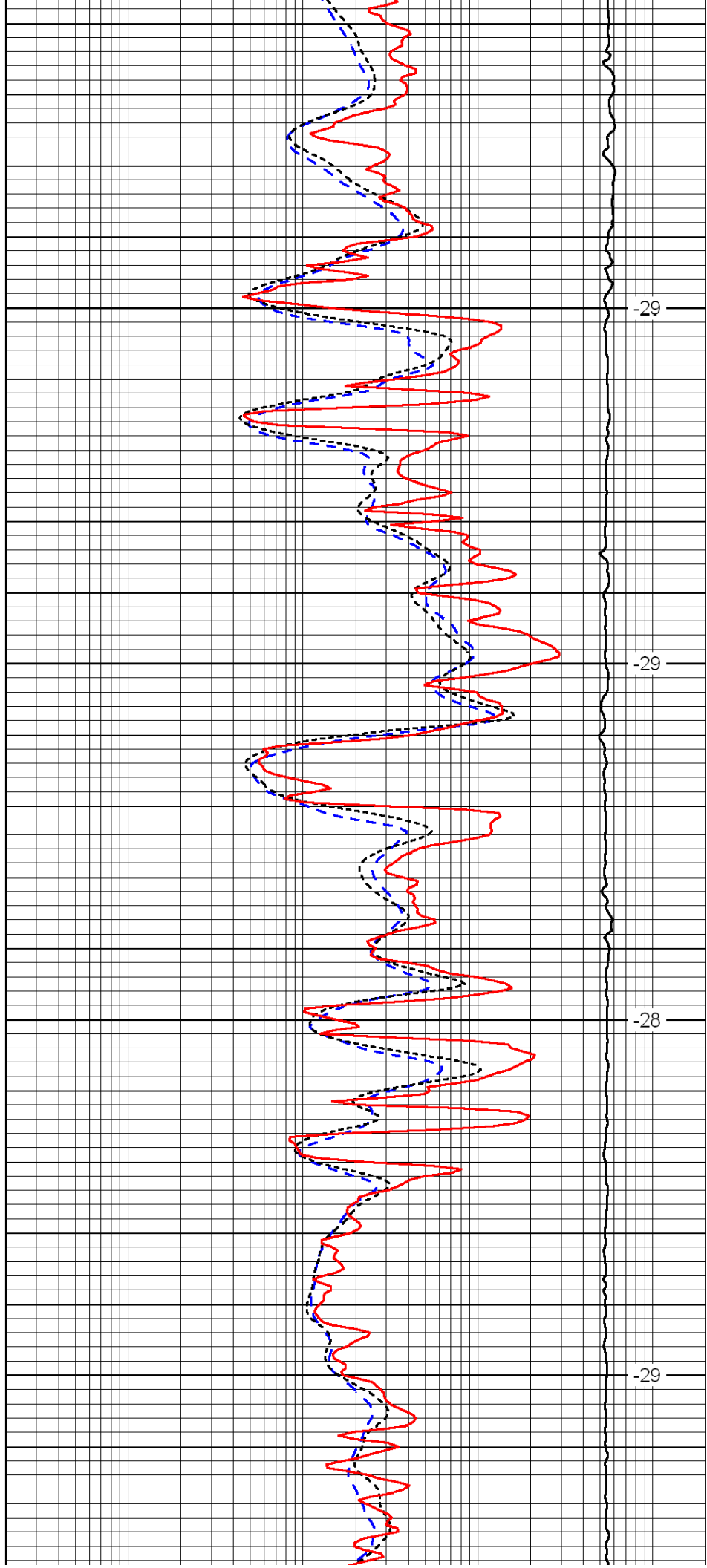


3200

3250

3300

3350

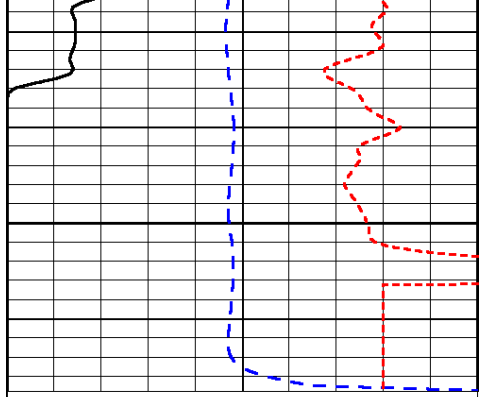


-29

-29

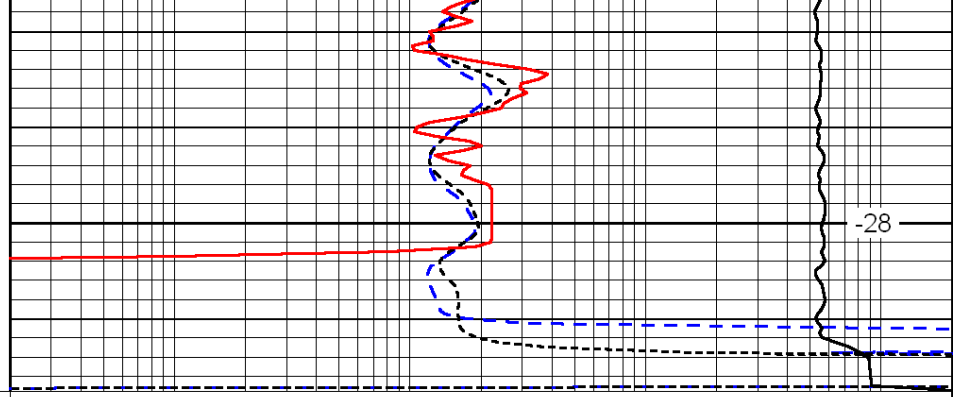
-28

-29



0	Gamma Ray	150
-200	SP (mV)	0
-160	Rxo / Rt	40

3400



0.2	Deep Resistivity	2000
0.2	Medium Resistivity	2000
0.2	Shallow Resistivity	2000
15000	Line Tension	0

LSPD