



# Microresistivity Log

**DIGITAL LOG (785) 625-3858**

API No. 15-009-25,454-00-00	Company <b>Reif Oil &amp; Gas Inc.</b>	Well <b>Huslig No. 1</b>	Location <b>NW SE SW SE 360' FSL &amp; 1830' FEL</b>
	Field <b>Huslig</b>	County <b>Barton</b>	State <b>Kansas</b>
	Sec: <b>13</b>	Twp: <b>17S</b>	Rge: <b>12W</b>
Permanent Datum Log Measured From Drilling Measured From	Ground Level Kelly Bushing From Kelly Bushing	Elevation 1851 5 Ft. Above Perm. Datum	Other Services CNL/CDL DIL/BHCS
Date	Elevation K.B. 1856 D.F. 1851 G.L. 1851		

Run Number	Two
Depth Driller	3415
Depth Logger	3412
Bottom Logged Interval	3411
Top Log Interval	2700
Casing Driller	8.625 @ 367
Casing Logger	362
Bit Size	7.875
Type Fluid in Hole	Chemical
Salinity, ppm CL	8.800
Density / Viscosity	9.3   47
pH / Fluid Loss	10.0   10.4
Source of Sample	Flowline
Rm @ Meas. Temp	.85 @ 78
Rmf @ Meas. Temp	.64 @ 78
Rmc @ Meas. Temp	1.15 @ 78
Source of Rmf / Rmc	Charts
Rm @ BHT	.59 @ 112
Operating Rig Time	4 Hours
Max Rec. Temp. F	112
Equipment Number	17
Location	Hays
Recorded By	Mike Garrison
Witnessed By	Jim Musgrove

<<< Fold Here >>>

All interpretations are opinions based on inferences from electrical or other measurements and we cannot and do not guarantee the accuracy or correctness of any interpretation, and we shall not, except in the case of gross or willful negligence on our part, be liable or responsible for any loss, costs, damages, or expenses incurred or sustained by anyone resulting from any interpretation made by any of our officers, agents or employees. These interpretations are also subject to our general terms and conditions set out in our current Price Schedule.

**Comments**

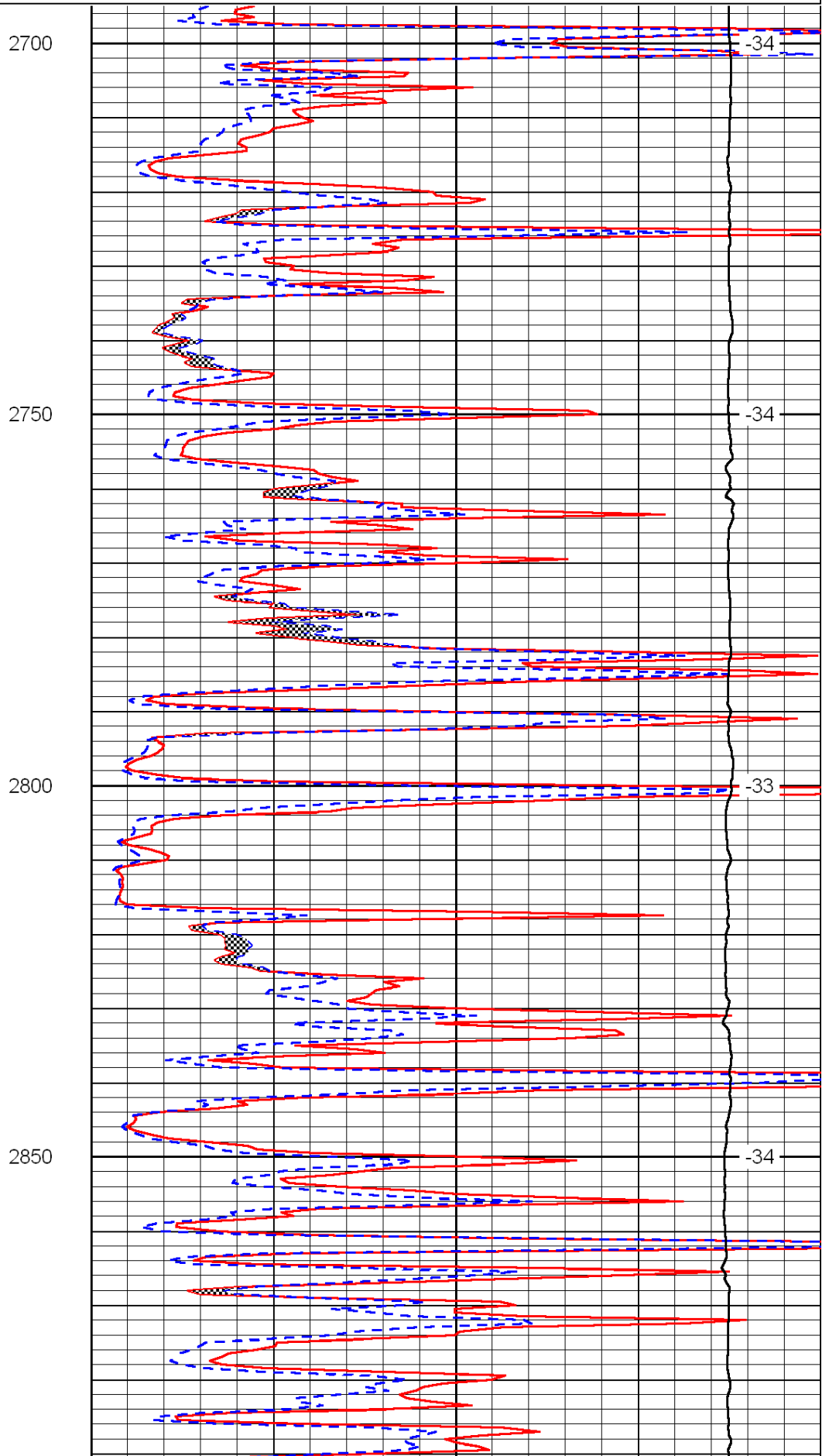
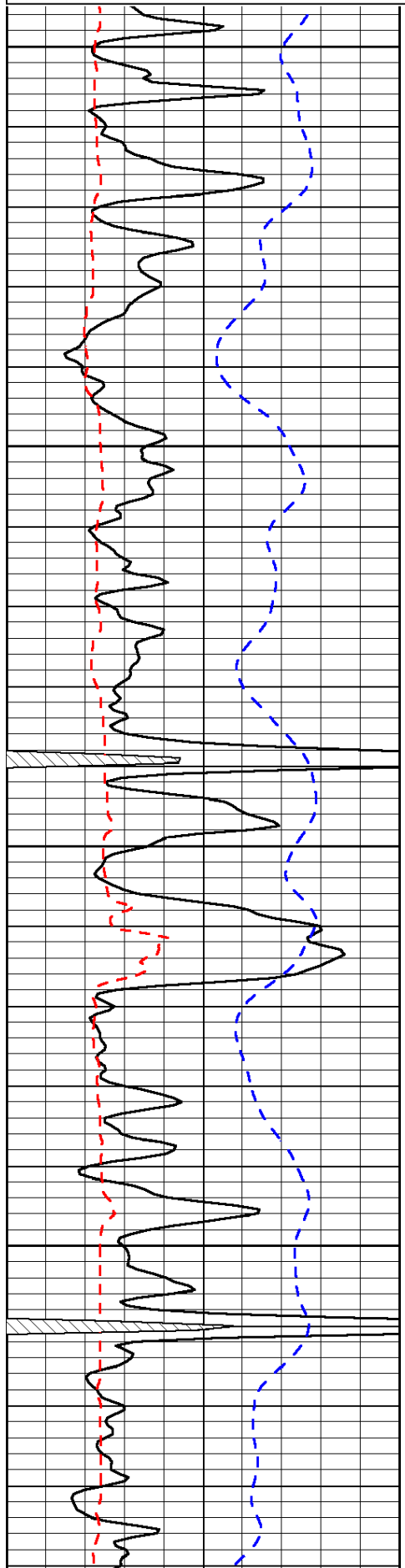
Thank you for using Log-Tech, Inc.  
(785) 625-3858

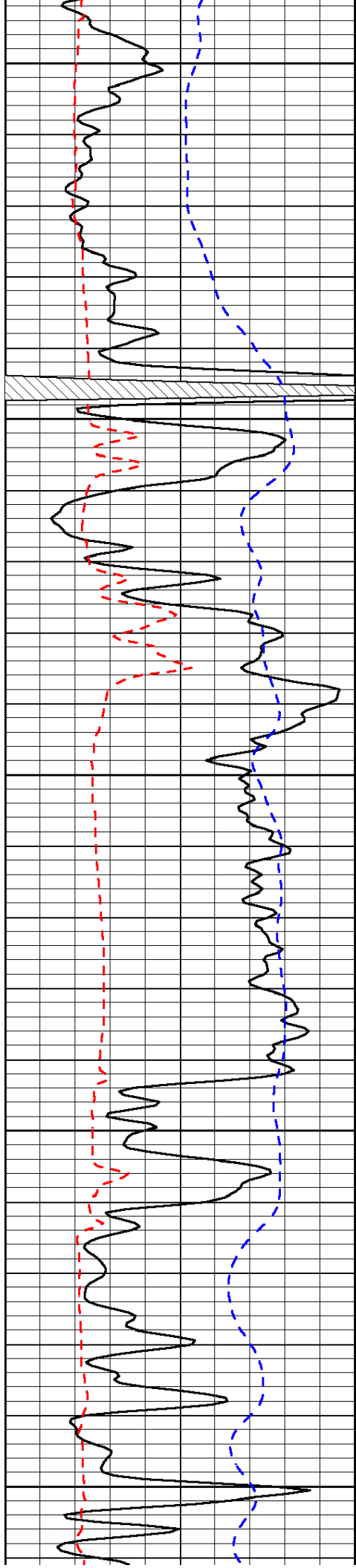
Ogden, 3/4 East, North Into

0	Gamma Ray	150
6	Micro Log Caliper (GAPI)	16
-200	SP (mV)	0

0	Micro Inverse 1 X 1	40
0	Micro Normal 2"	40
15000	Line Weight	0

LSPD





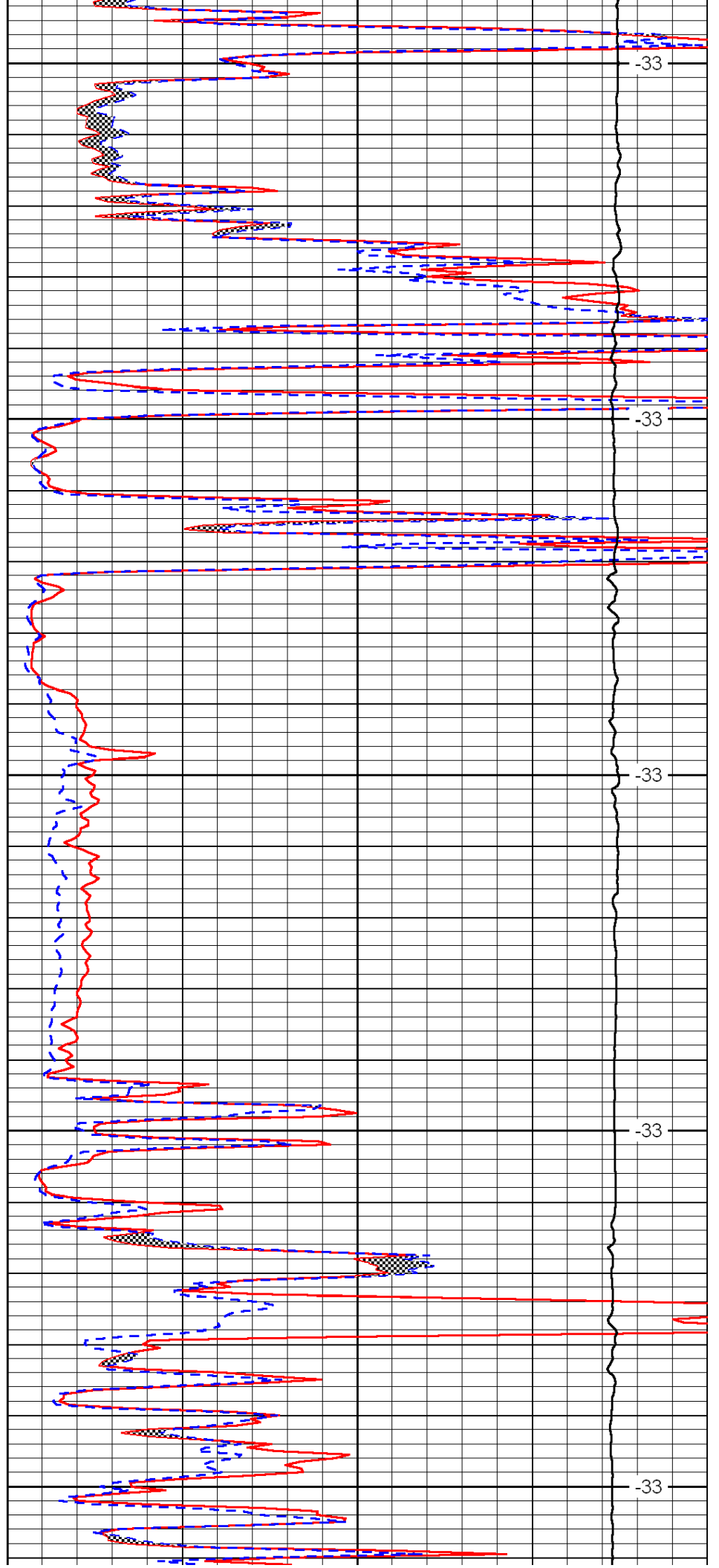
2900

2950

3000

3050

3100



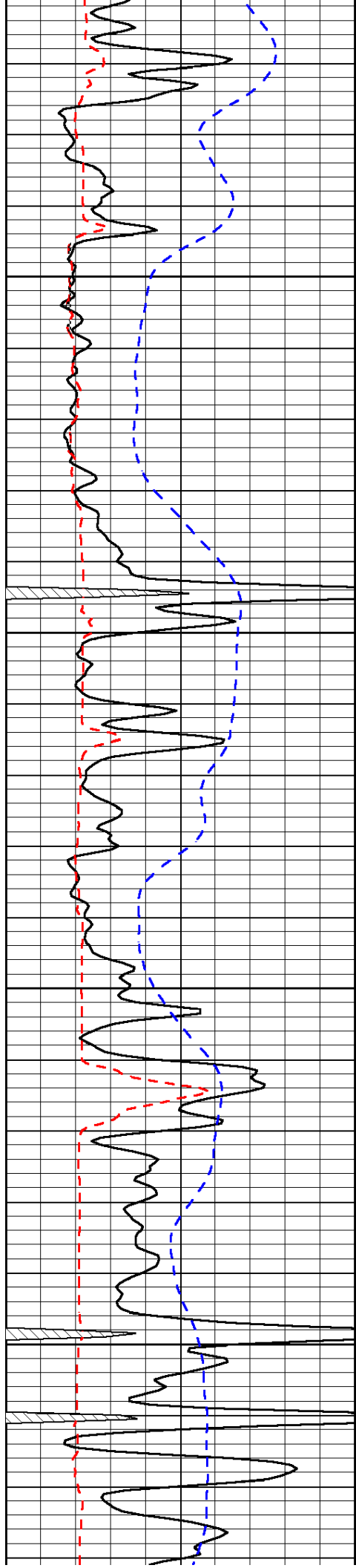
-33

-33

-33

-33

-33

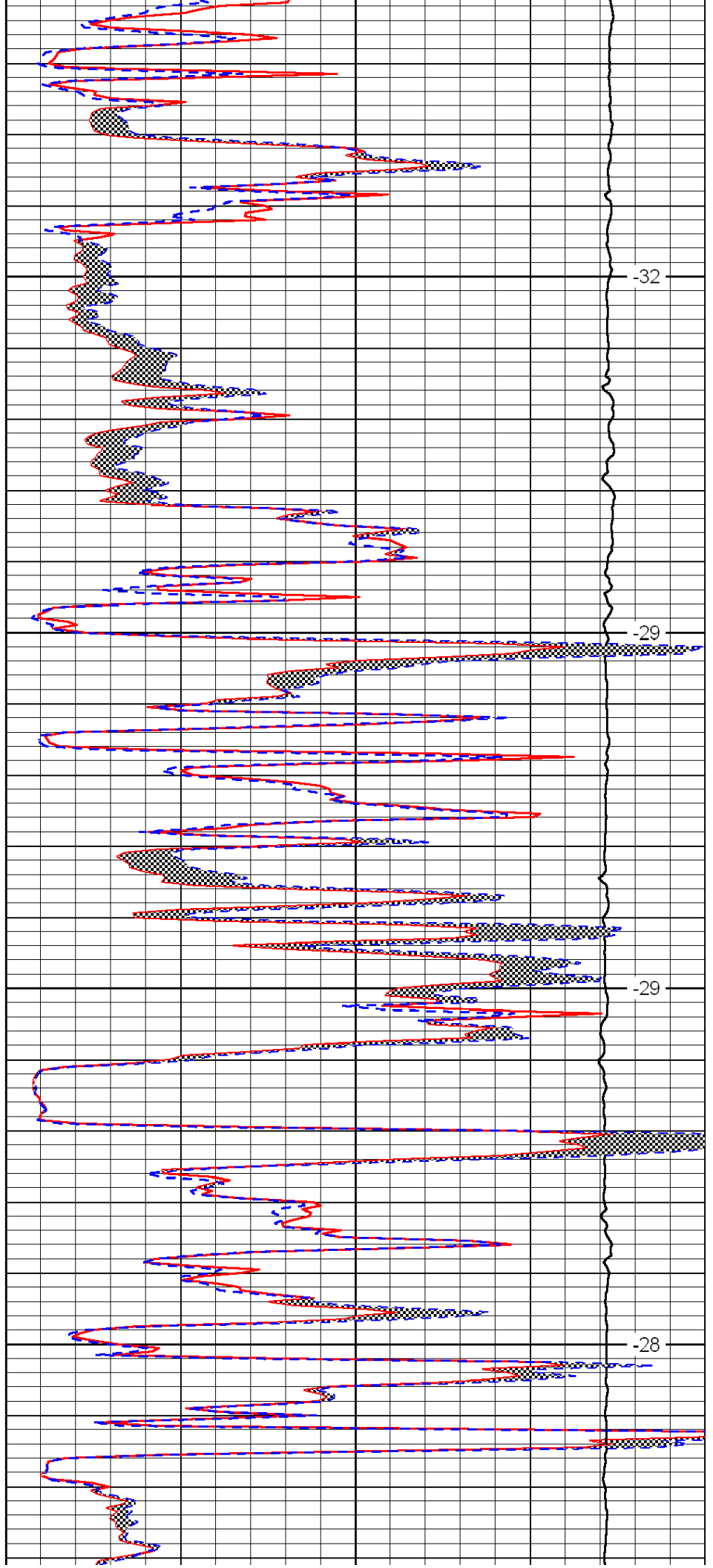


3150

3200

3250

3300

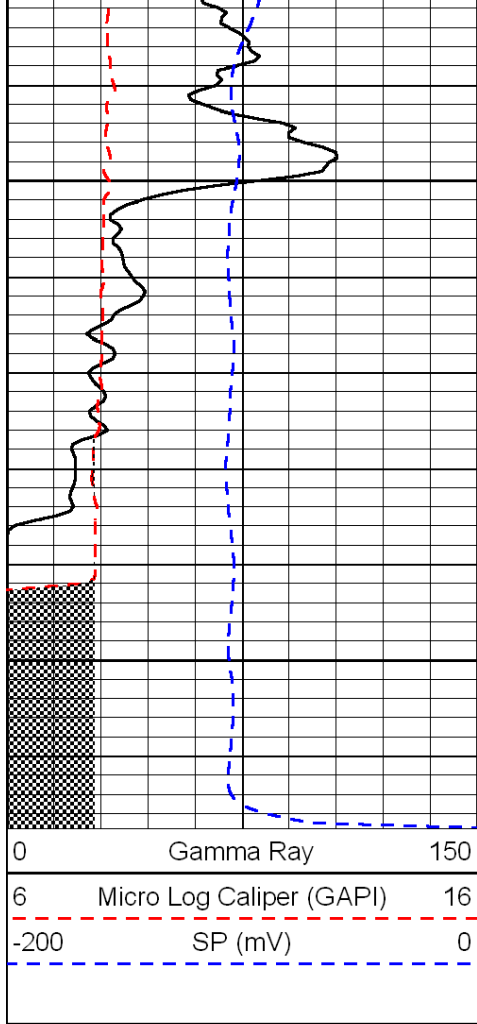


-32

-29

-29

-28

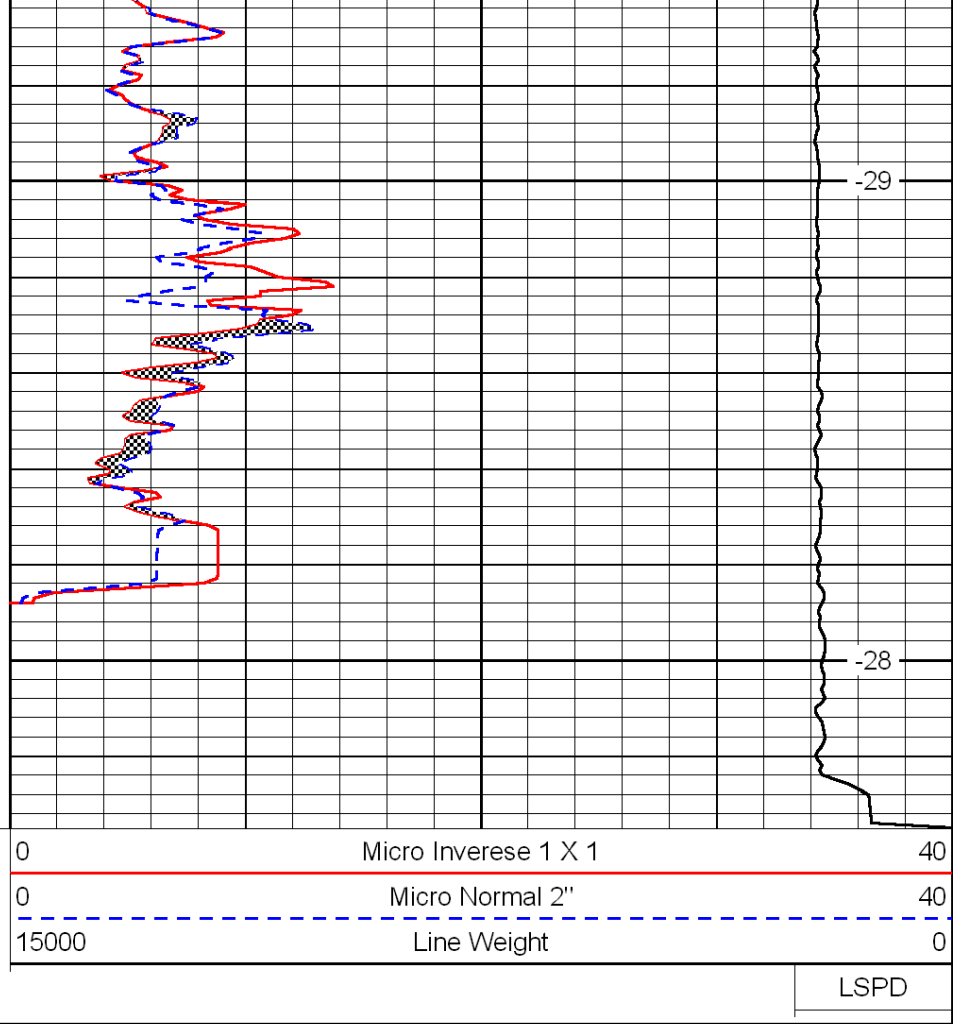


3350

-29

3400

-28



LSPD