



DIGITAL LOG (785) 625-3858

Dual Induction Log

| | | | |
|------------------------|-----------------------|-------------------------|---------------------------|
| API No. | 15-009-25430-00-00 | | |
| Company | L. D. Drilling, Inc. | | |
| Well | Maurice No. 1-4 | | |
| Field | Otis - Albert | | |
| County | Barton | State | Kansas |
| Location | 2210' FNL & 2310' FEL | | |
| Sec: 4 | Twp: 19 S | Rge: 15 W | Other Services CNL/CDL |
| Permanent Datum | Ground Level | Elevation 1976 | Elevation |
| Log Measured From | Kelly Bushing | 5 Ft. Above Perm. Datum | K.B. 1981 |
| Drilling Measured From | Kelly Bushing | | D.F. 1976 |
| Date | 8/19/2010 | | |

| | |
|------------------------|---------------|
| Run Number | One |
| Depth Driller | 3630 |
| Depth Logger | 3633 |
| Bottom Logged Interval | 3632 |
| Top Log Interval | 1000 |
| Casing Driller | 8.625 @ 1011 |
| Casing Logger | 1014 |
| Bit Size | 7.875 |
| Type Fluid in Hole | Chemical |
| Salinity, ppm CL | 7.800 |
| Density / Viscosity | 9.2 58 |
| pH / Fluid Loss | 9.0 11.2 |
| Source of Sample | Flowline |
| Rm @ Meas. Temp | 1.10 @ 80 |
| Rmf @ Meas. Temp | 0.83 @ 80 |
| Rmc @ Meas. Temp | 1.49 @ 80 |
| Source of Rmf / Rmc | Charts |
| Rm @ BHT | 0.78 @ 112 |
| Operating Rig Time | 2 Hours |
| Max Rec. Temp. F | 112 |
| Equipment Number | 15 |
| Location | Hays |
| Recorded By | B. Becker |
| Witnessed By | Kim Shoemaker |

<<< Fold Here >>>

All interpretations are opinions based on inferences from electrical or other measurements and we cannot and do not guarantee the accuracy or correctness of any interpretation, and we shall not, except in the case of gross or willful negligence on our part, be liable or responsible for any loss, costs, damages, or expenses incurred or sustained by anyone resulting from any interpretation made by any of our officers, agents or employees. These interpretations are also subject to our general terms and conditions set out in our current Price Schedule.

Comments

Thank you for using Log-Tech, Inc.
 (785) 625-3858
 Albert, Ks; 2 East;
 1 South; 1/4 West
 South Into

Database File: c:\warrior\data\ld_drilling_maurice no. 1-4\ld_hd.db
 Dataset Pathname: DIL\@00001c08
 Presentation Format: dil2in
 Dataset Creation: Mon Aug 23 09:43:53 2010
 Charted by: Depth in Feet scaled 1:600

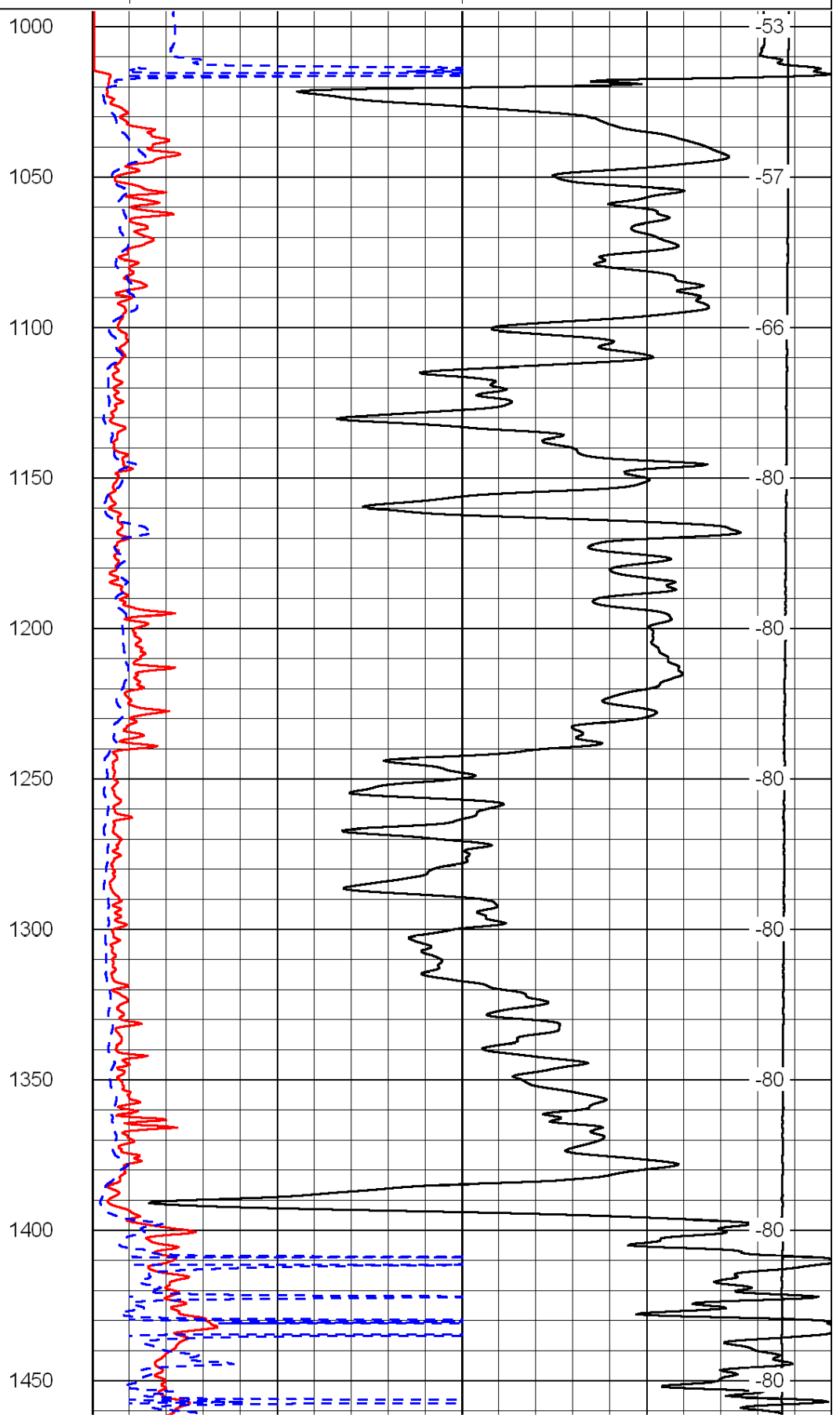
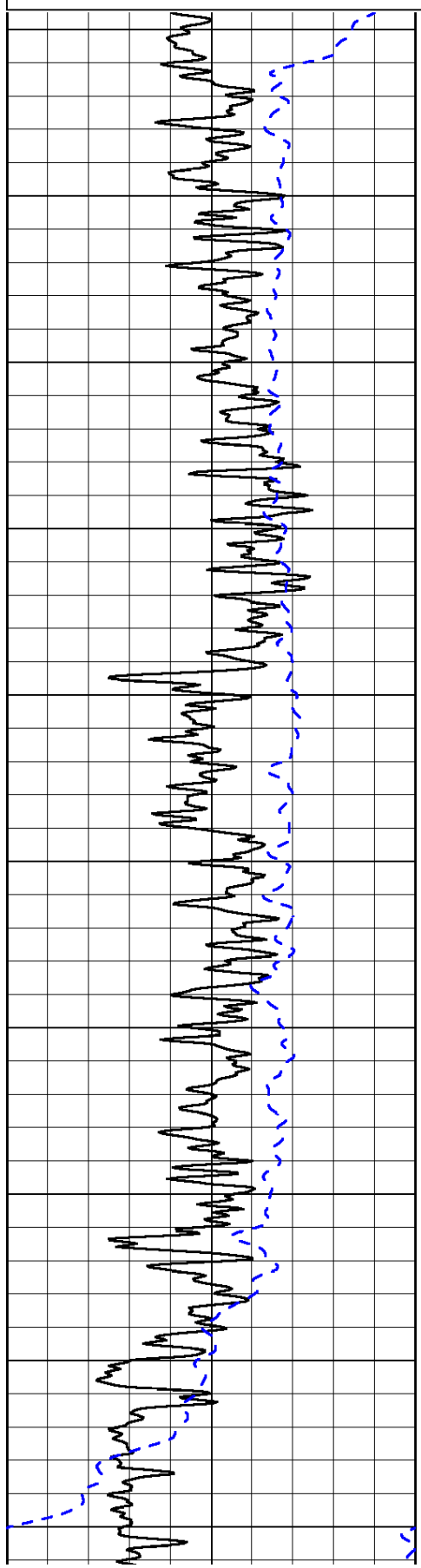
| | | |
|------|-----------|-----|
| 0 | Gamma Ray | 150 |
| -200 | SP (mV) | 0 |

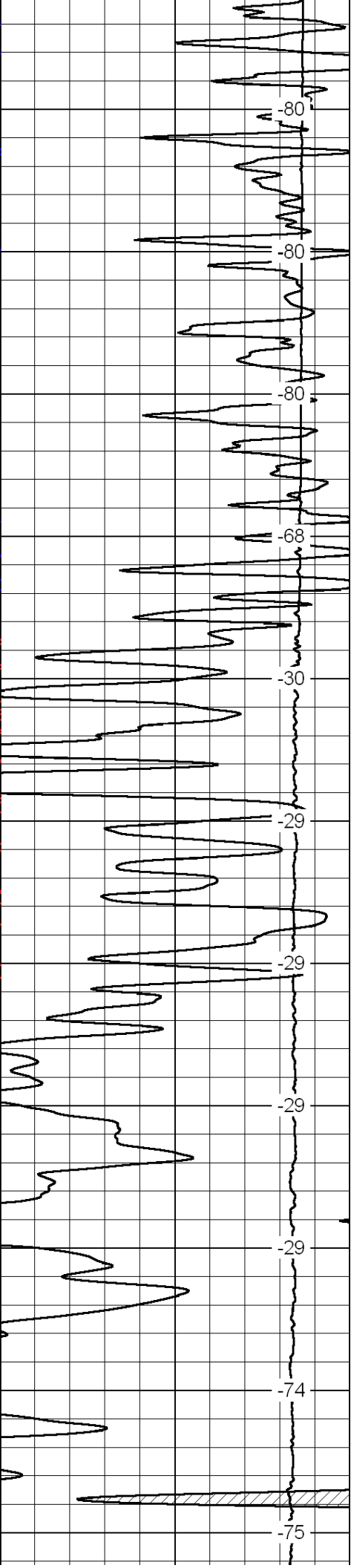
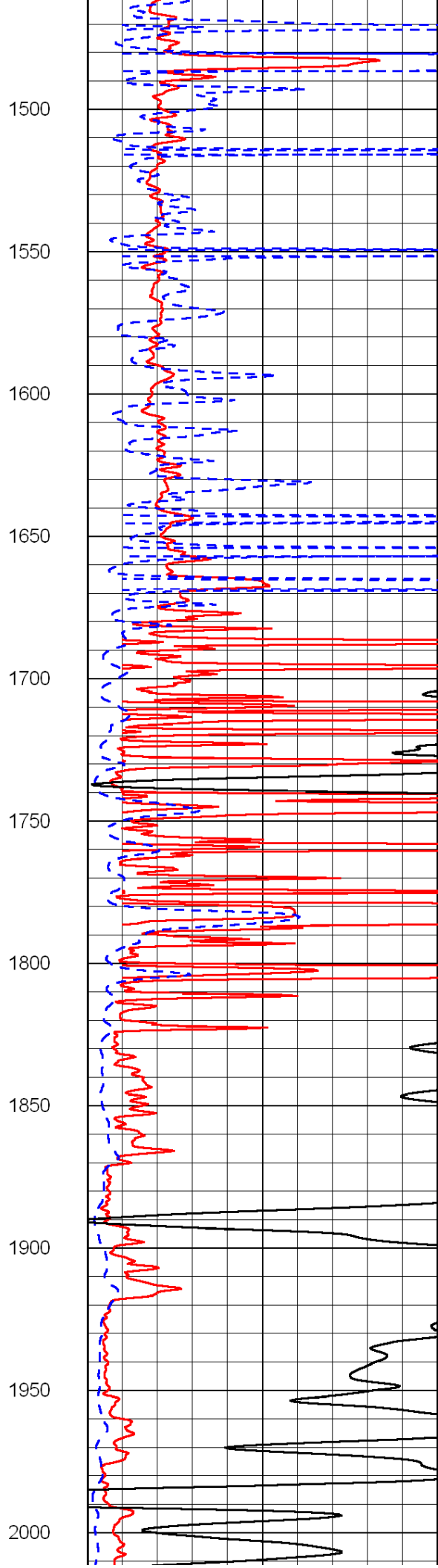
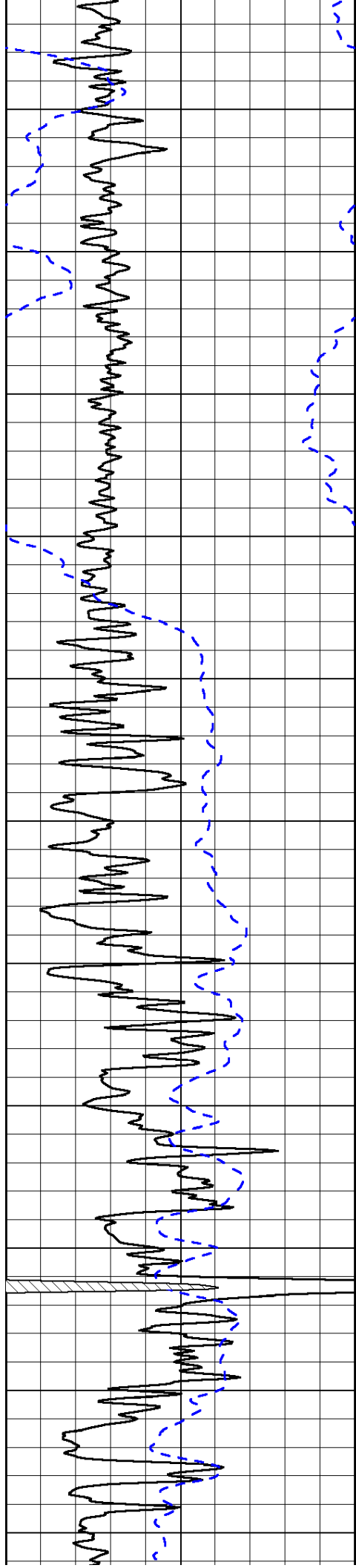
| | | |
|---|---------------------|----|
| 0 | Shallow Resistivity | 50 |
| 0 | Deep Resistivity | 50 |

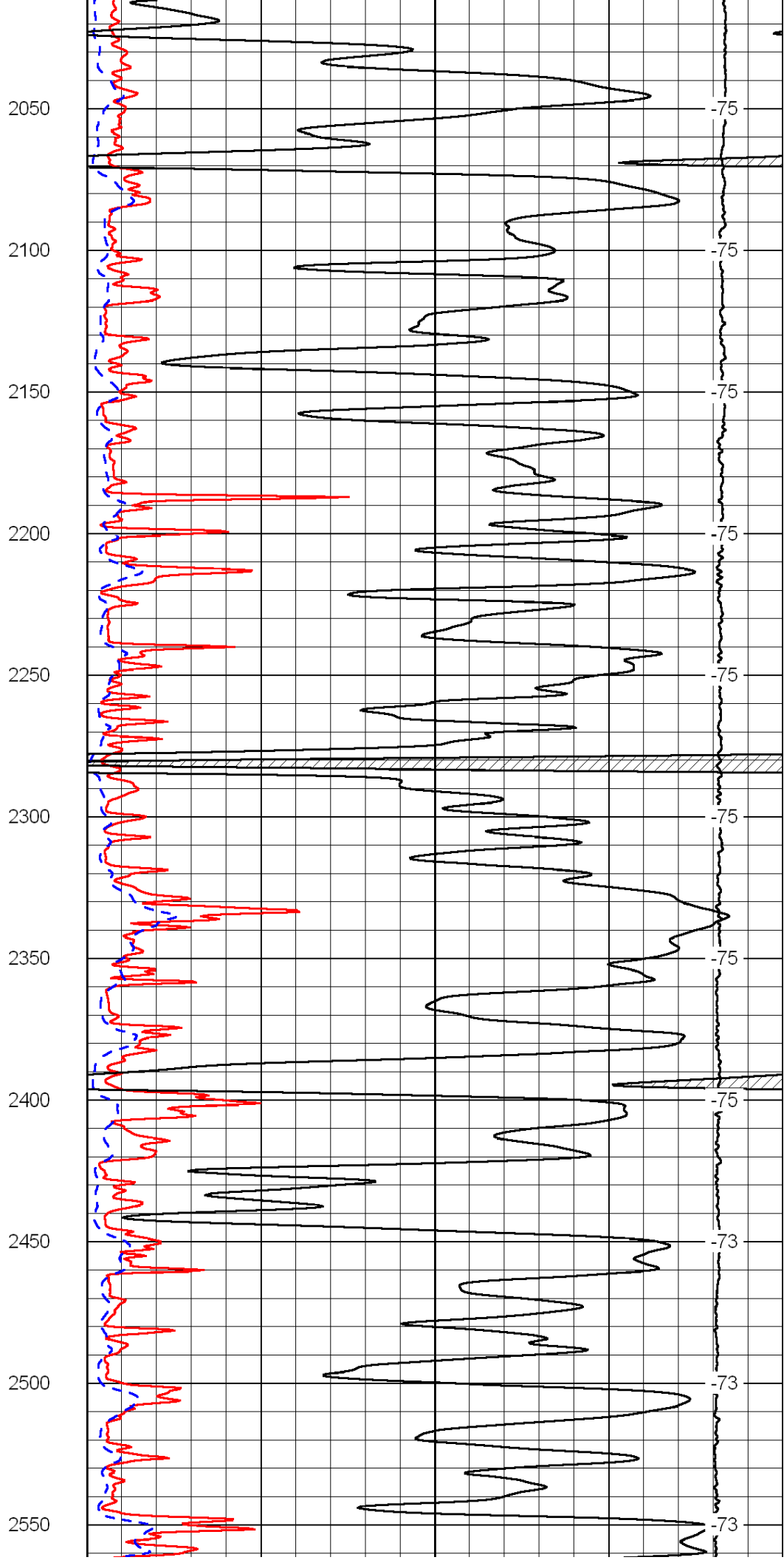
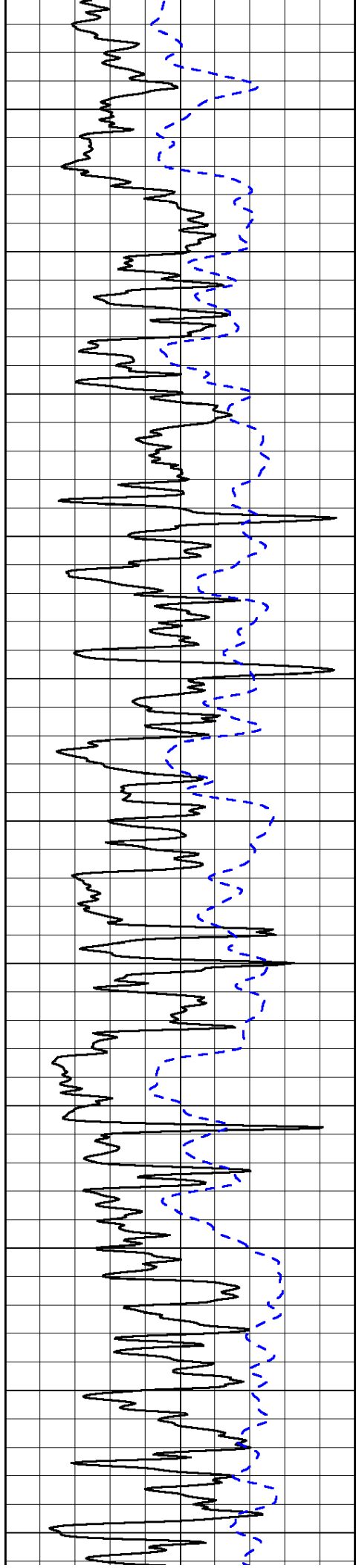
LSPD

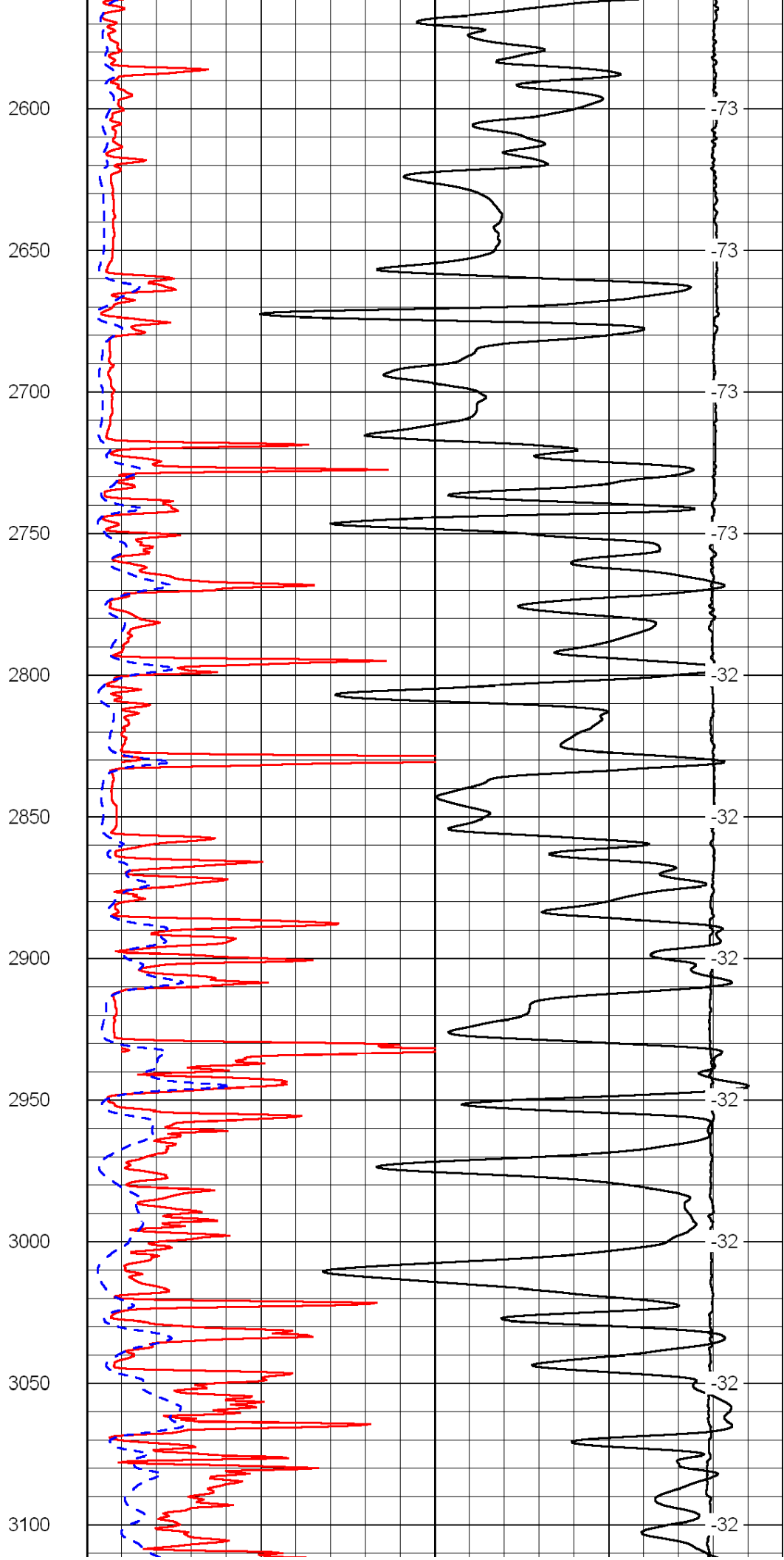
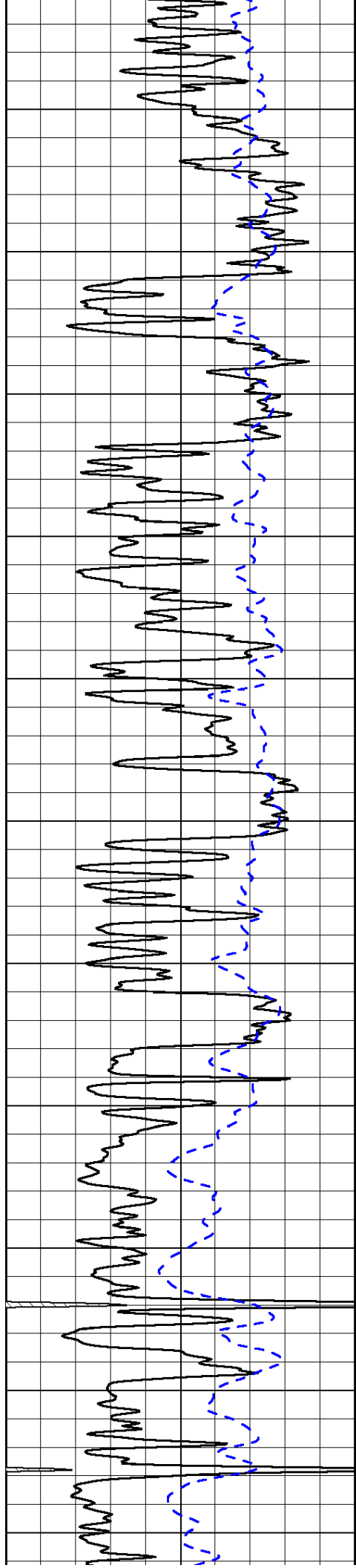
| | | |
|-------|--------------|---|
| 1000 | Conductivity | 0 |
| 15000 | Line Tension | 0 |

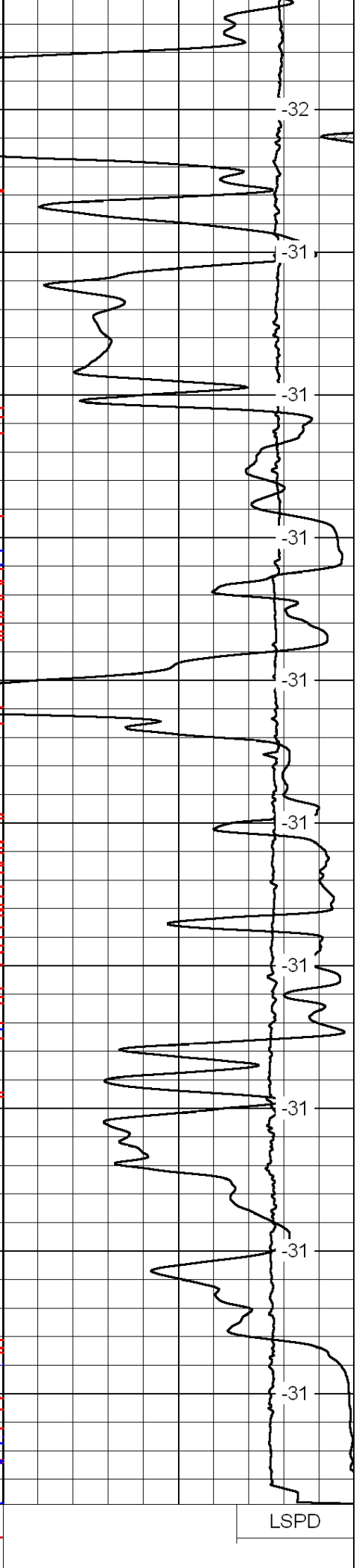
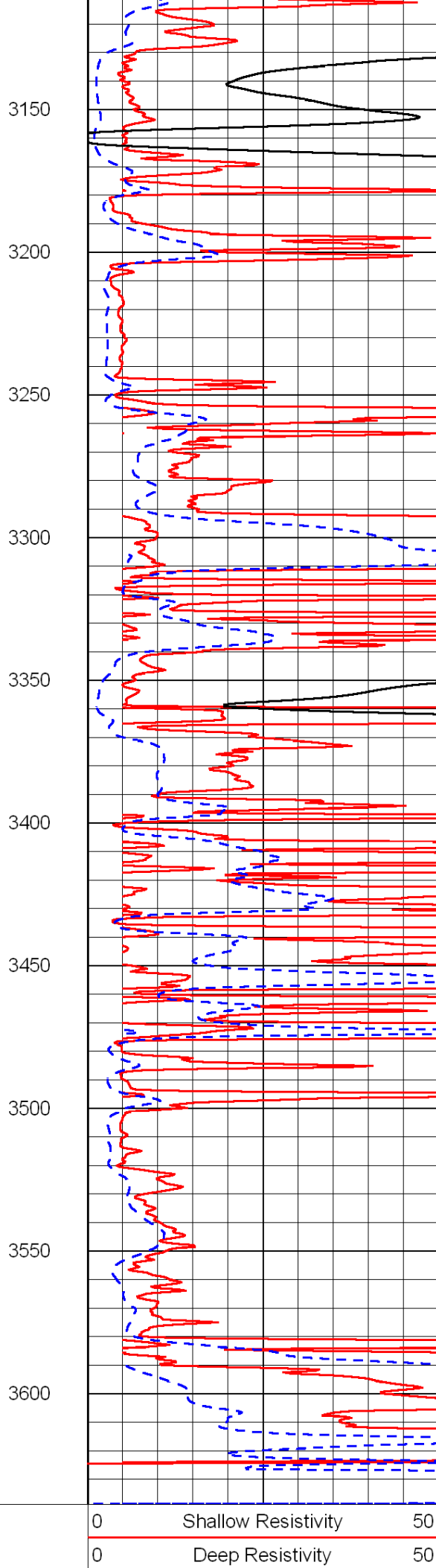
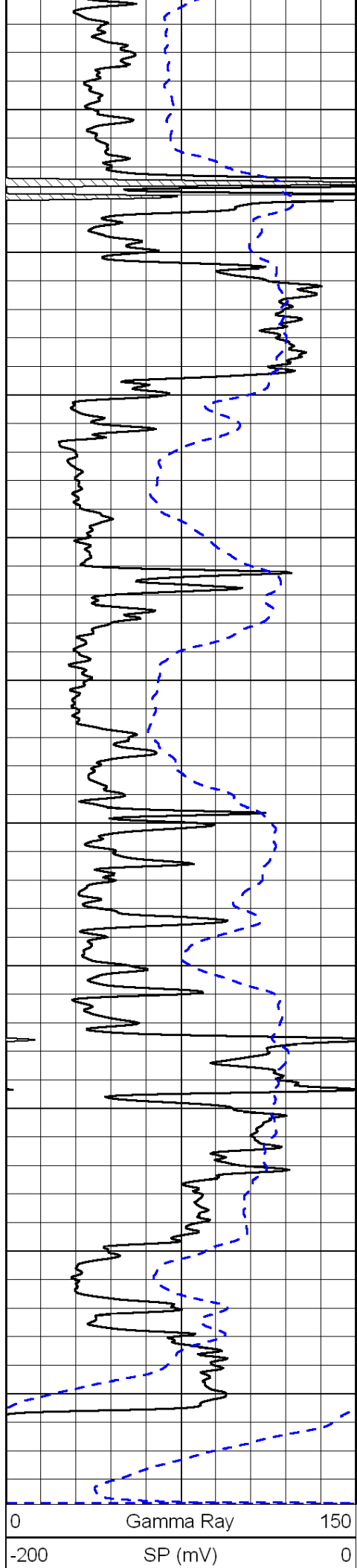
| | | |
|----|---------------------|-----|
| 50 | Shallow Resistivity | 500 |
| 50 | Deep Resistivity | 500 |









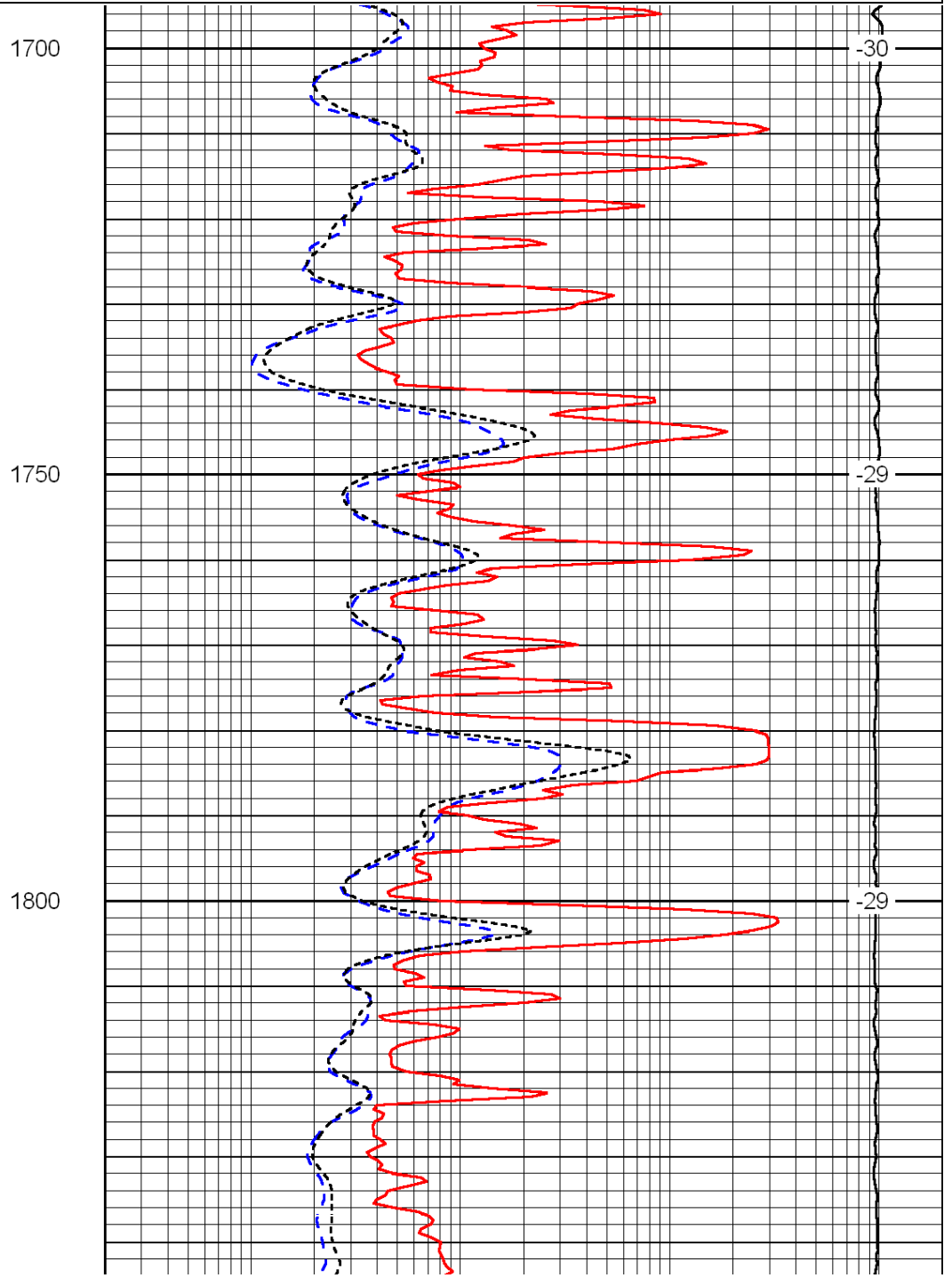
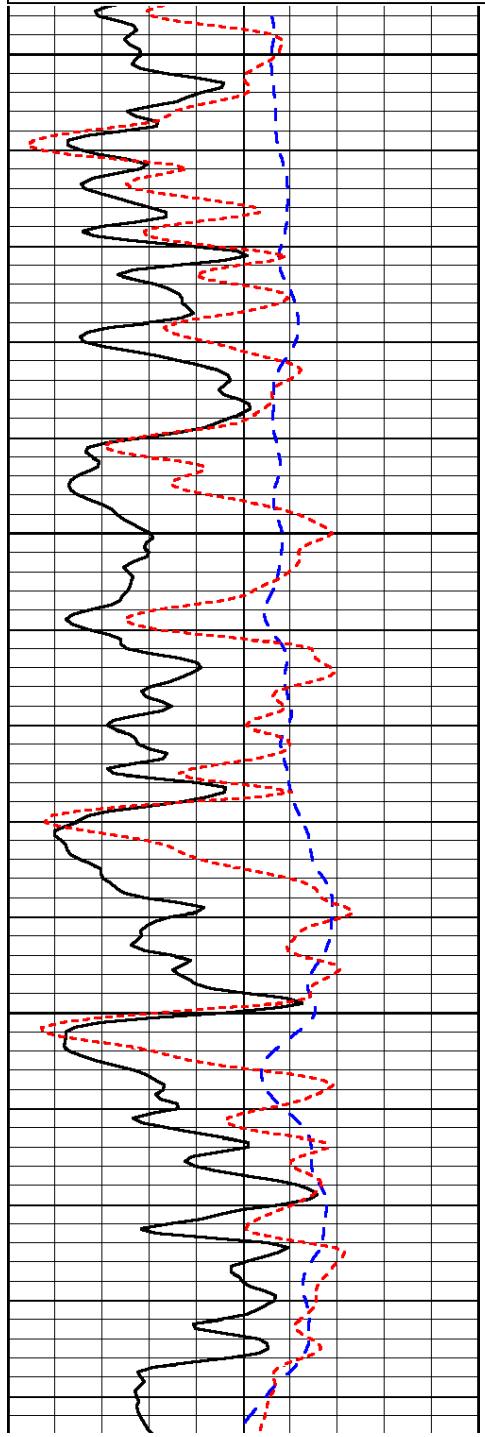


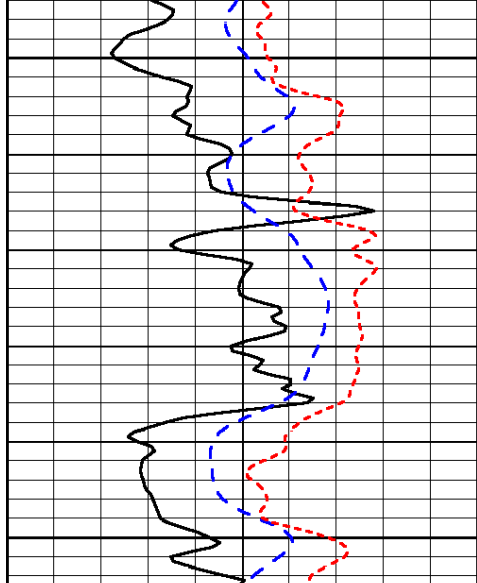
| | | |
|-------|---------------------|-----|
| 1000 | Conductivity | 0 |
| 15000 | Line Tension | 0 |
| 50 | Shallow Resistivity | 500 |
| 50 | Deep Resistivity | 500 |

Database File: c:\warrior\data\ld_drilling_maurice no. 1-4\ld_hd.db
 Dataset Pathname: DIL/@00001c08
 Presentation Format: dil
 Dataset Creation: Mon Aug 23 09:43:53 2010
 Charted by: Depth in Feet scaled 1:240

| | | | | | |
|------|-----------|-----|-------|---------------------|------|
| 0 | Gamma Ray | 150 | 0.2 | Deep Resistivity | 2000 |
| -200 | SP (mV) | 0 | 0.2 | Medium Resistivity | 2000 |
| -160 | Rxo / Rt | 40 | 0.2 | Shallow Resistivity | 2000 |
| | | | 15000 | Line Tension | 0 |

LSPD

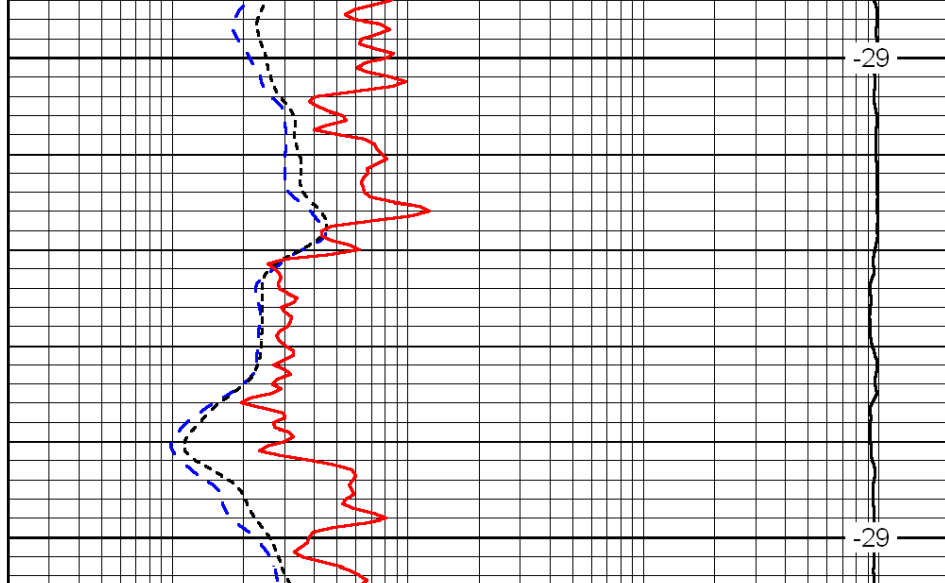




| | | |
|------|-----------|-----|
| 0 | Gamma Ray | 150 |
| -200 | SP (mV) | 0 |
| -160 | Rxo / Rt | 40 |

1850

1900



| | | |
|-------|---------------------|------|
| 0.2 | Deep Resistivity | 2000 |
| 0.2 | Medium Resistivity | 2000 |
| 0.2 | Shallow Resistivity | 2000 |
| 15000 | Line Tension | 0 |

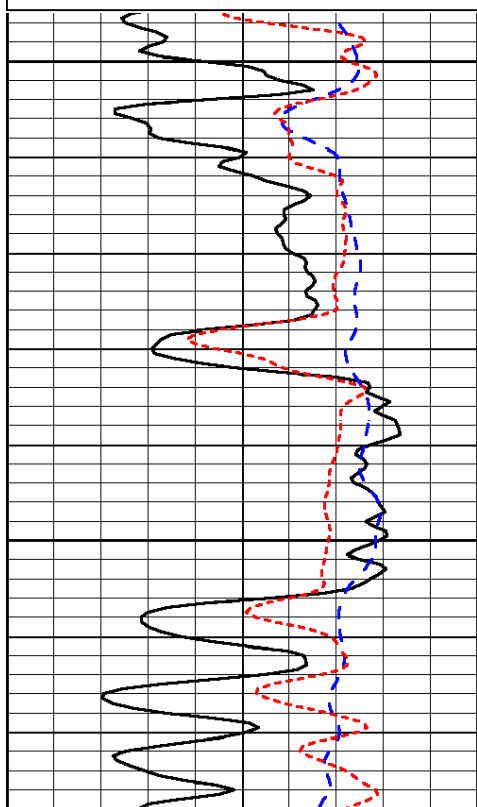
LSPD

Database File: c:\warrior\data\ld drilling_maurice no. 1-4\ld_hd.db
 Dataset Pathname: DIL/@00001c08
 Presentation Format: dil
 Dataset Creation: Mon Aug 23 09:43:53 2010
 Charted by: Depth in Feet scaled 1:240

| | | |
|------|-----------|-----|
| 0 | Gamma Ray | 150 |
| -200 | SP (mV) | 0 |
| -160 | Rxo / Rt | 40 |

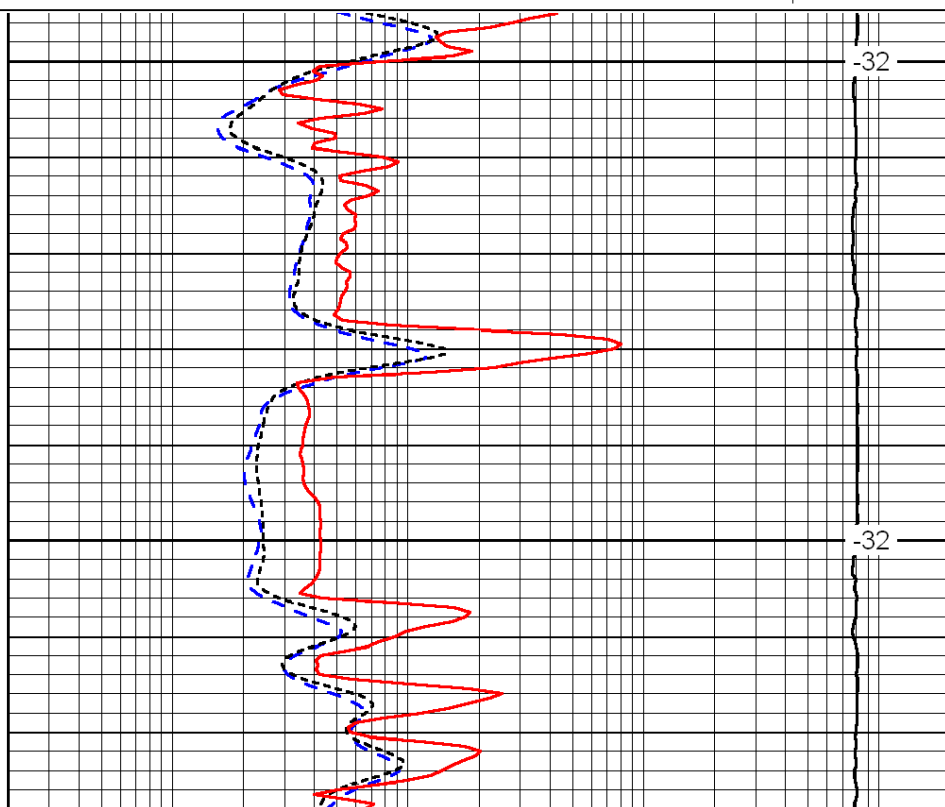
| | | |
|-------|---------------------|------|
| 0.2 | Deep Resistivity | 2000 |
| 0.2 | Medium Resistivity | 2000 |
| 0.2 | Shallow Resistivity | 2000 |
| 15000 | Line Tension | 0 |

LSPD



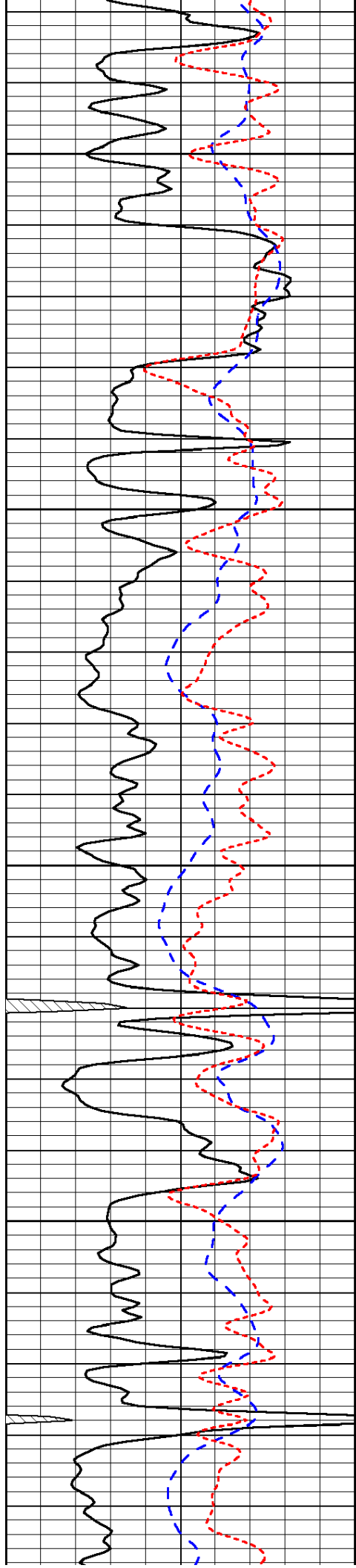
2800

2850



-32

-32

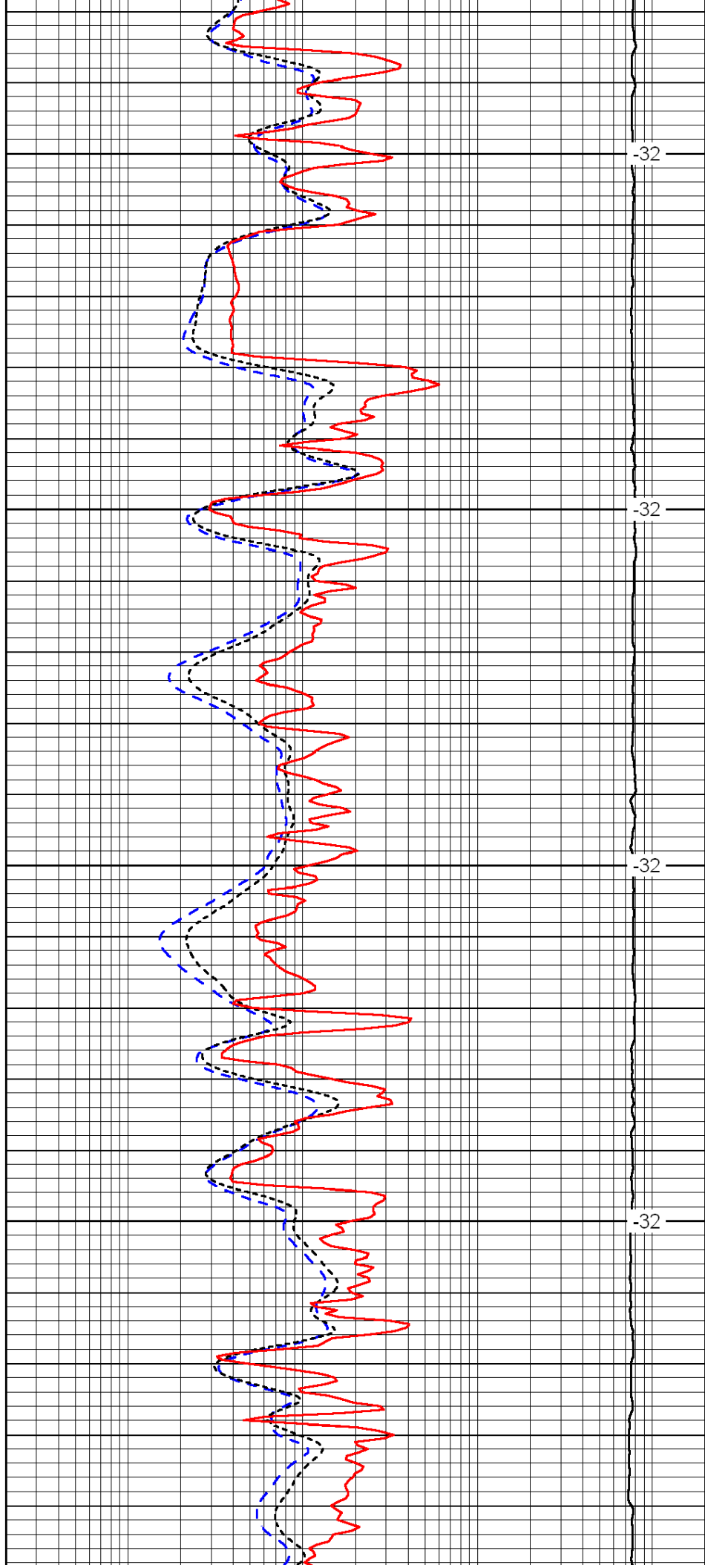


2900

2950

3000

3050

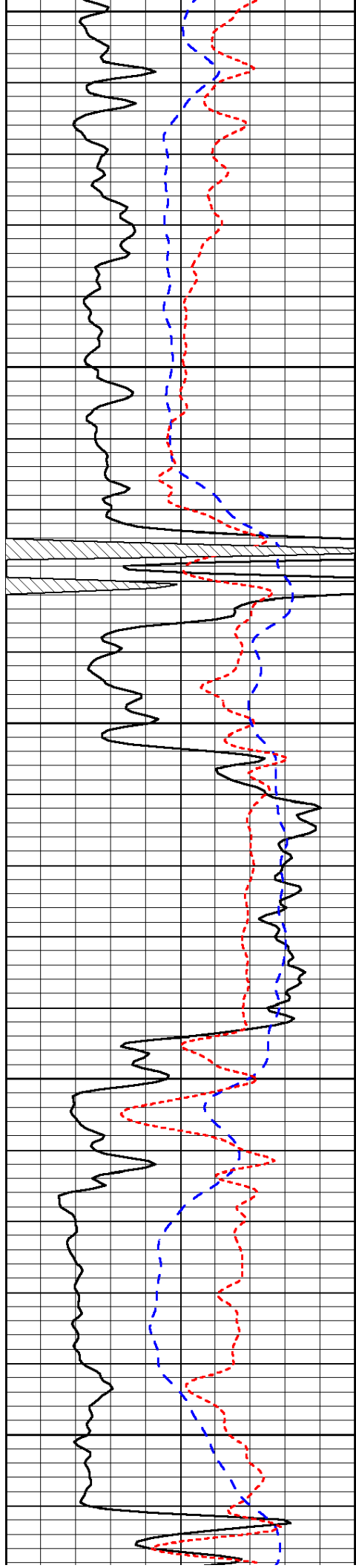


-32

-32

-32

-32



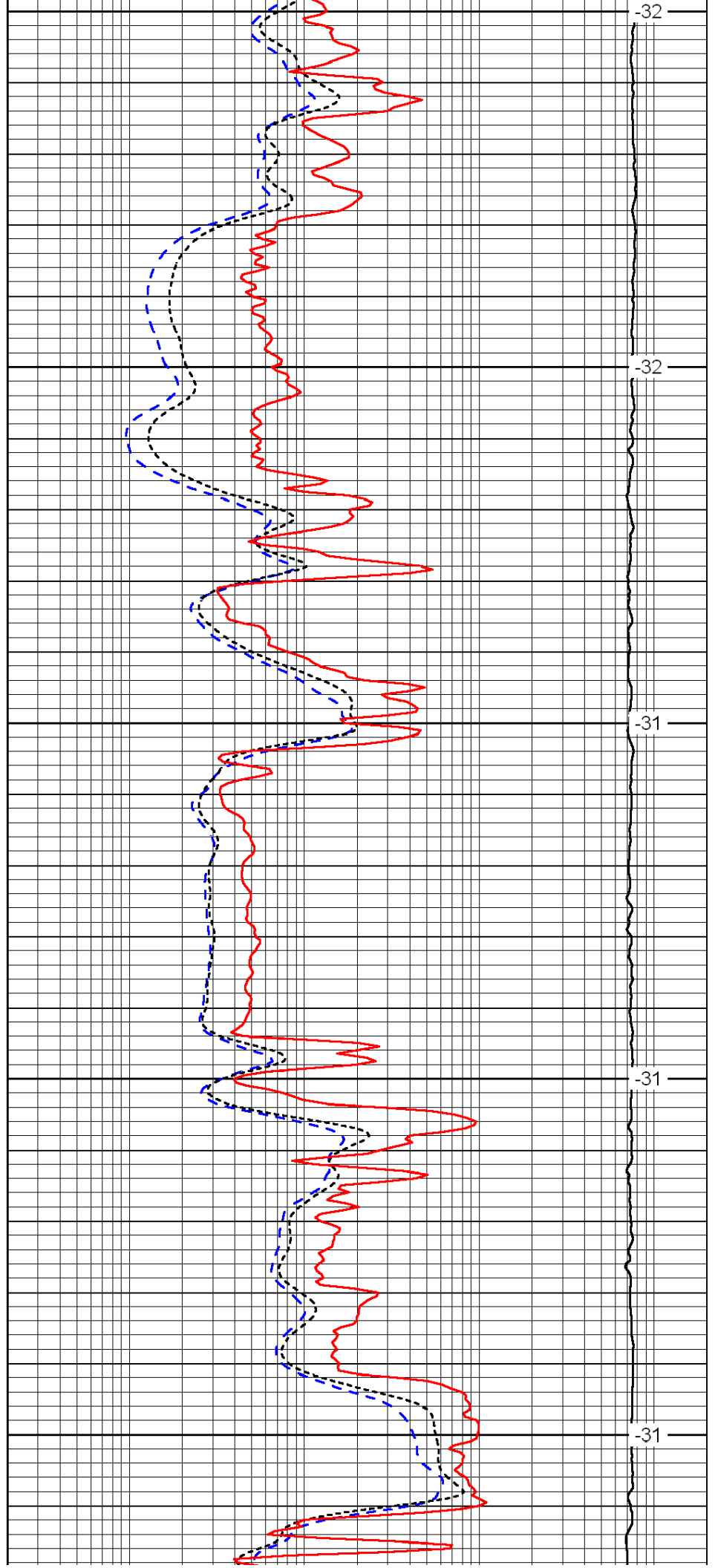
3100

3150

3200

3250

3300



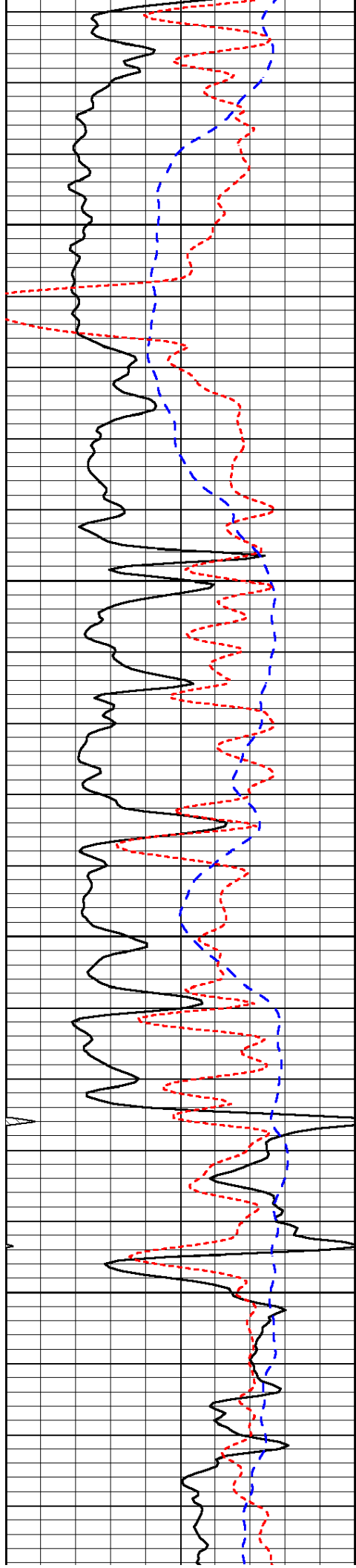
-32

-32

-31

-31

-31

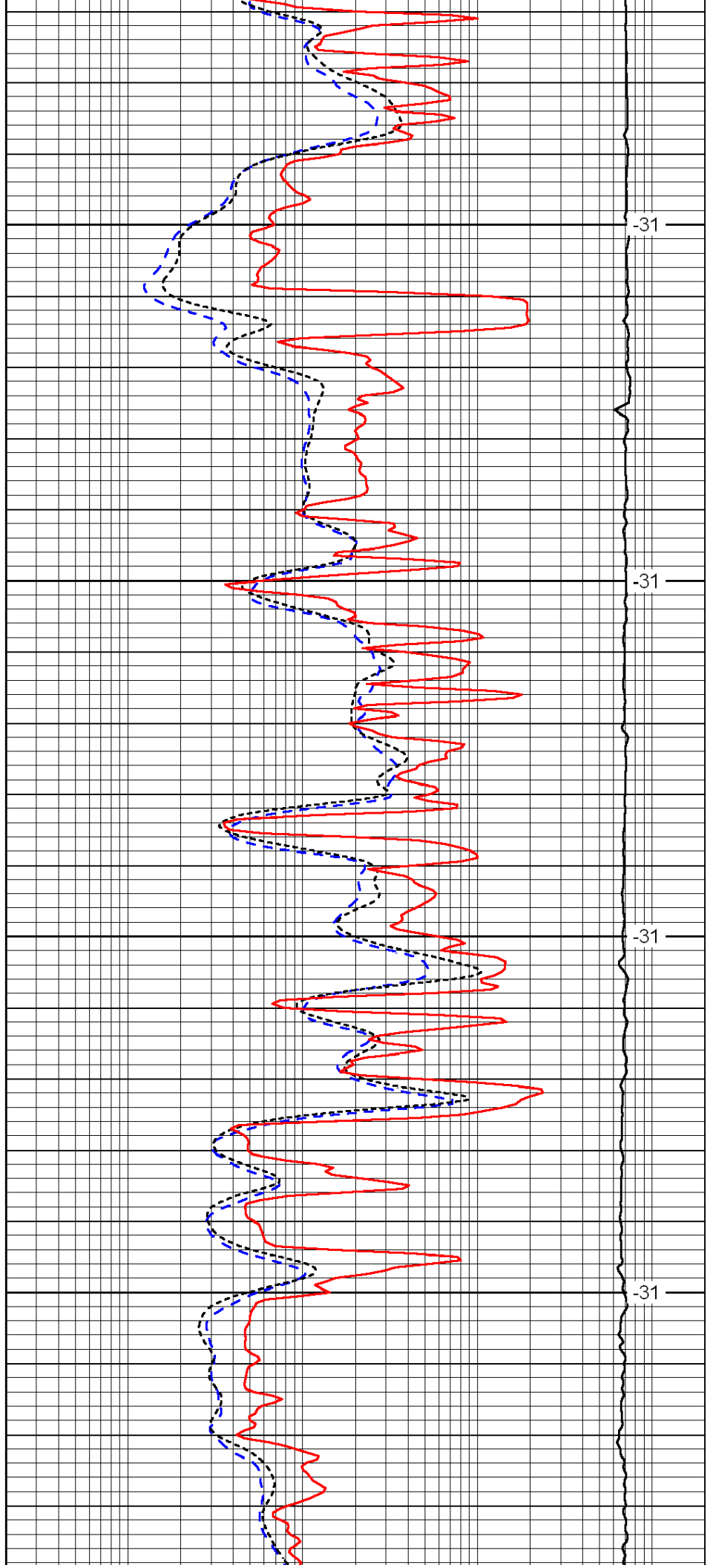


3350

3400

3450

3500

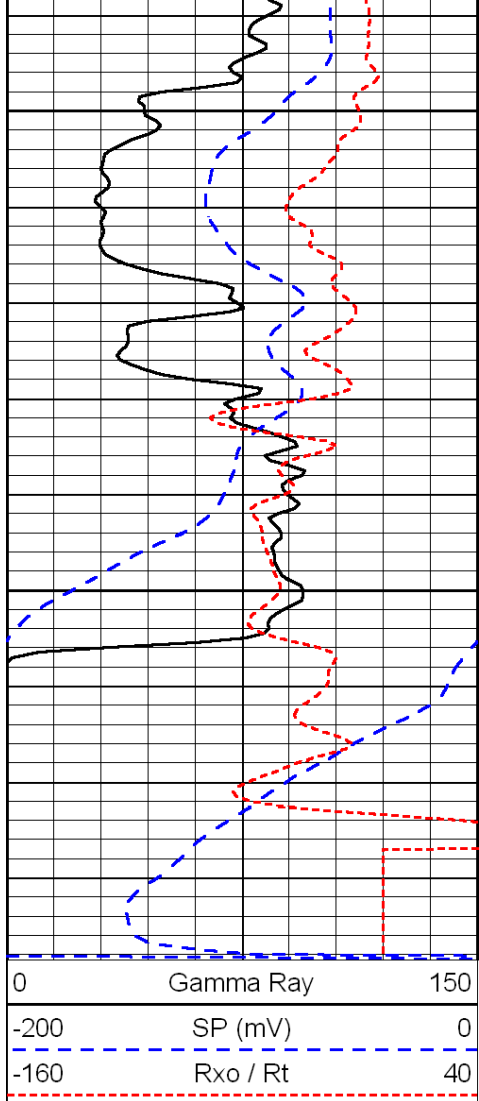


-31

-31

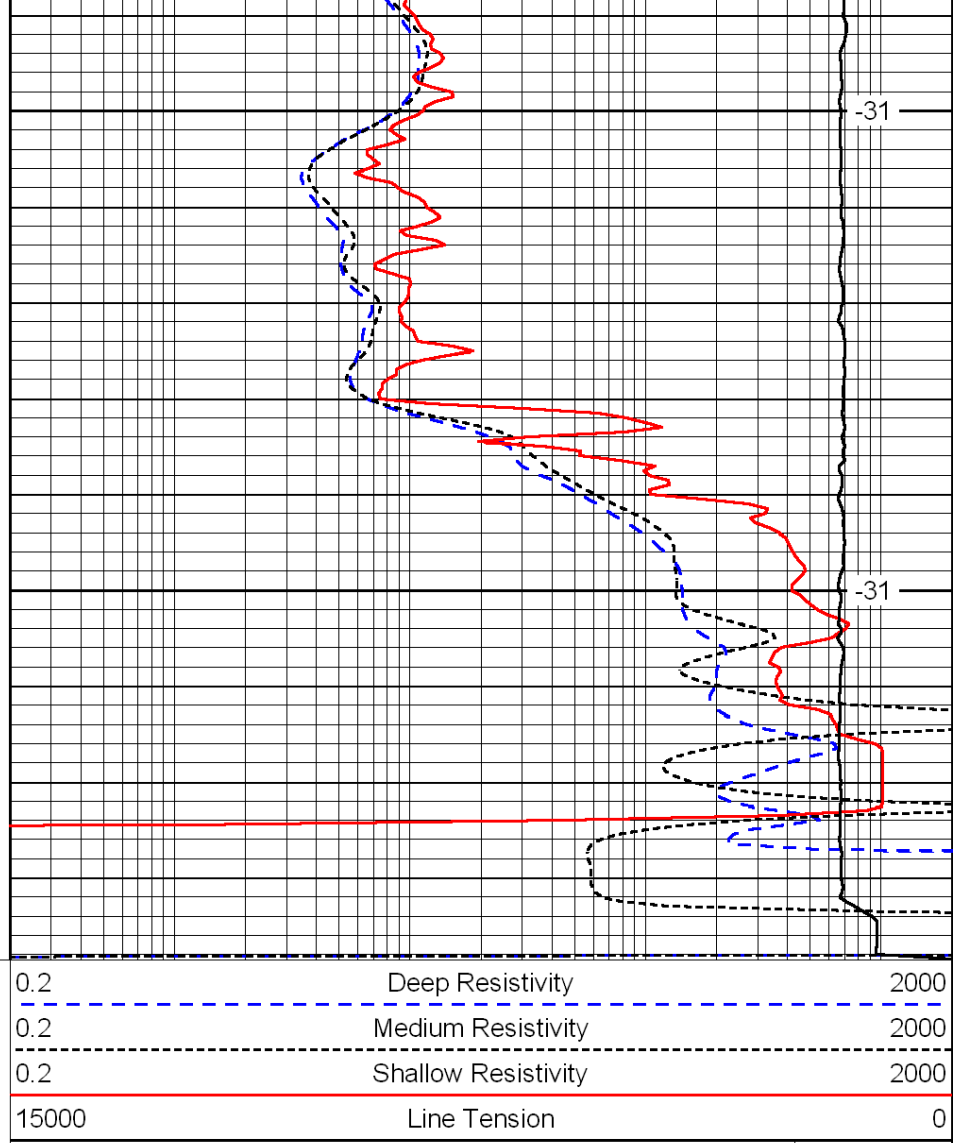
-31

-31



3550

3600



-31

-31

LSPD