



Dual Compensated
Porosity Log

DIGITAL LOG (785) 625-3858

API No. 15-159-22,620-00-00

Company Gilbert-Stewart Operating
Well Lincoln No.9
Field Chase-Silica
County Rice
State Kansas

Location 860' FNL & 2400' FWL
Sec: 16 Twp: 19S Rge: 9W
Other Services DIL MEL/BHCS

Permanent Datum Ground Level Elevation 1696
Log Measured From Kelly Bushing 8 Ft. Above Perm. Datum
Drilling Measured From Kelly Bushing

K.B. 1704
D.F. 1696
G.L. 1696

Date 8/7/2010

Run Number One
Type Log CNL / CDL
Depth Driller 3325
Depth Logger 3325
Bottom Logged Interval 3304
Top Logged Interval 2400
Type Fluid In Hole Chemical
Salinity, PPM CL 5,900
Density 9.15
Level Full
Max. Rec. Temp. F 109
Operating Rig Time 3 1/2 Hours
Equipment -- Location 10 Hays
Recorded By C. Desaire
Witnessed By Adam Kennedy

Borehole Record				Casing Record			
Run No	Bit	From	To	Size	Wgt. 23#	From	To
One	12.25	00	302	8.625		00	302
Two	7.875	302	TD				

<<< Fold Here >>>

All interpretations are opinions based on inferences from electrical or other measurements and we cannot and do not guarantee the accuracy or correctness of any interpretation, and we shall not, except in the case of gross or willful negligence on our part, be liable or responsible for any loss, costs, damages, or expenses incurred or sustained by anyone resulting from any interpretation made by any of our officers, agents or employees. These interpretations are also subject to our general terms and conditions set out in our current Price Schedule.

Comments

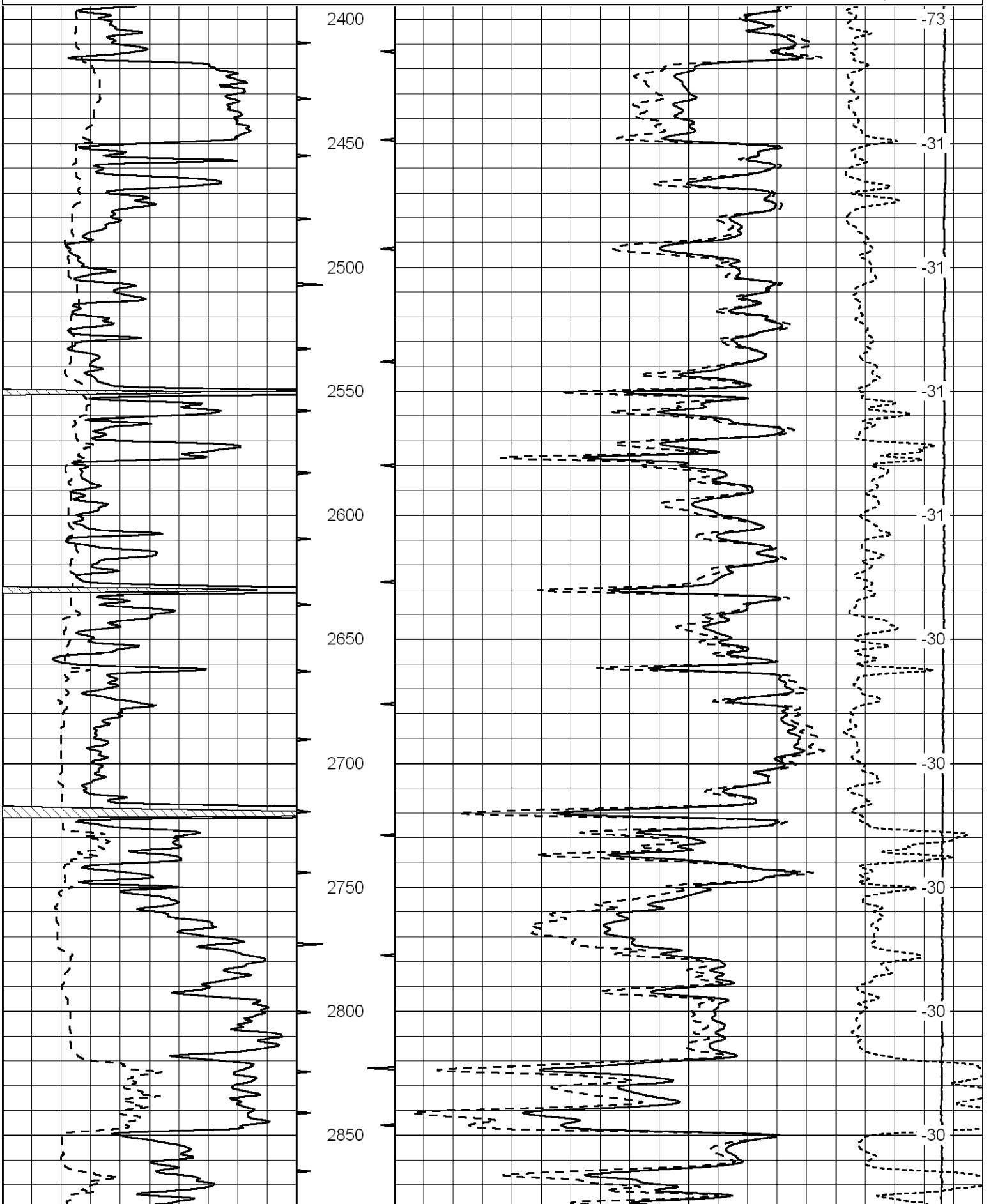
Thank you for using Log-Tech, Inc.
(785) 625-3858

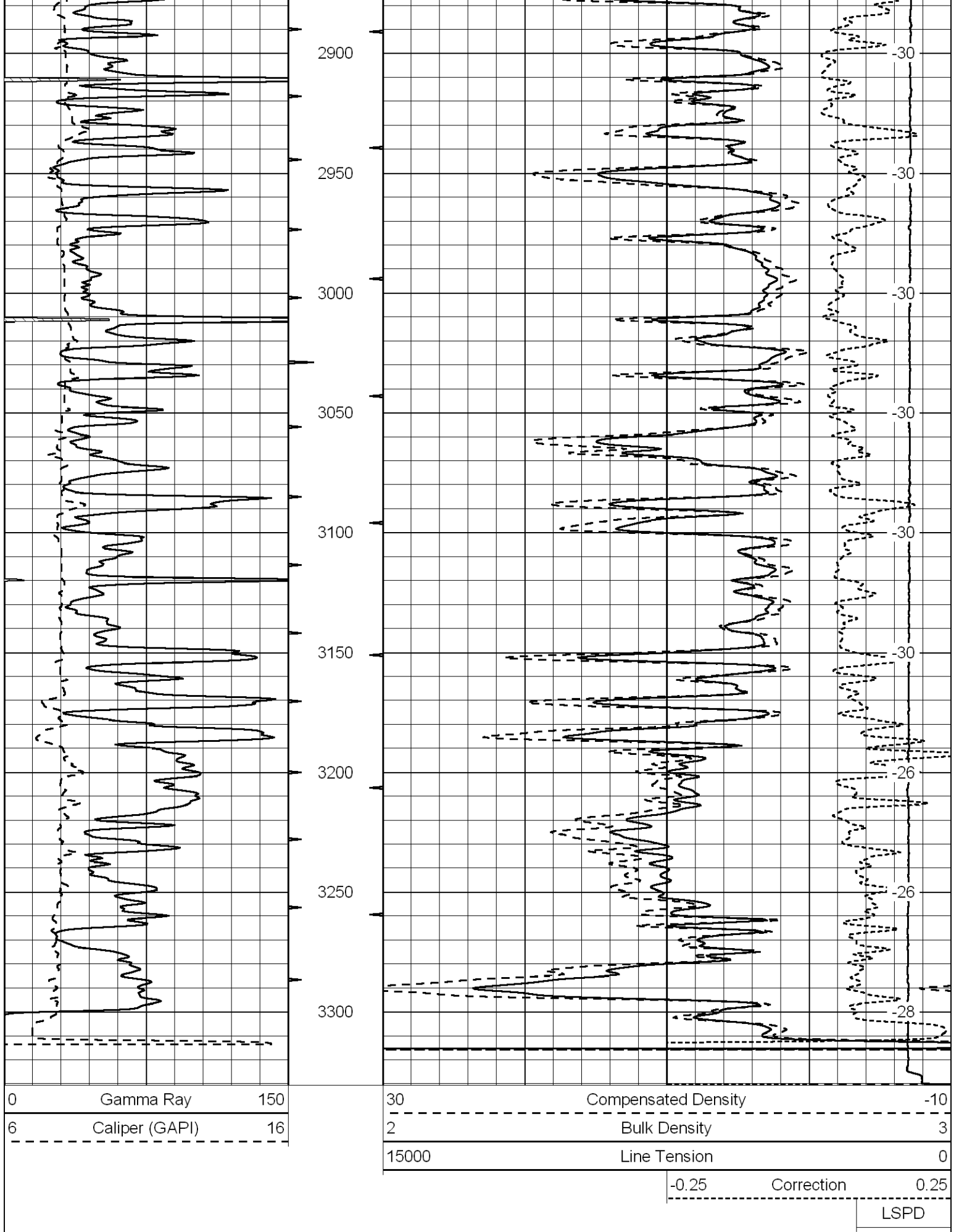
Bushton, 3 E,
8 S, 1 1/2 E, S Into

Database File: gshd.db
Dataset Pathname: dil/gsstk2
Presentation Format: cdl
Dataset Creation: Sat Aug 07 17:57:10 2010
Charted by: Depth in Feet scaled 1:600

0	Gamma Ray	150
6	Caliper (GAPI)	16

30	Compensated Density	-10
2	Bulk Density	3
15000	Line Tension	0
	-0.25	0.25
	Correction	
		LSPD





Dataset Pathname: dll/gsstk2
Presentation Format: cndlspec
Dataset Creation: Sat Aug 07 17:57:10 2010
Charted by: Depth in Feet scaled 1:240

0	Gamma Ray	150
6	Caliper (GAPI)	16

30	CNLS	-10
30	Compensated Density (2.71 ma)	-10
10000	Line Tension	0
	-0.25 Correction	0.25

