



Dual Induction Log

DIGITAL LOG (785) 625-3858

API No.	15-159-22,620-00-00		
Company	Gilbert-Stewart Operating		
Well	Lincoln No.9		
Field	Chase-Silica		
County	Rice	State	Kansas
Location	860' FNL & 2400' FWL		
Sec: 16	Twp: 19S	Rge: 9W	Other Services CNL/CDL MEL/BHCS
Permanent Datum	Ground Level	Elevation 1696	Elevation
Log Measured From	Kelly Bushing	8 Ft. Above Perm. Datum	K.B. 1704
Drilling Measured From	Kelly Bushing		D.F. 1696
			G.L. 1696

Date	8/7/2010	
Run Number	One	
Depth Driller	3325	
Depth Logger	3325	
Bottom Logged Interval	3324	
Top Log Interval	300	
Casing Driller	8.625 @ 302	
Casing Logger	303	
Bit Size	7.875	
Type Fluid in Hole	Chemical	
Salinity, ppm CL	5.900	
Density / Viscosity	9.15	57
pH / Fluid Loss	11.0	9.2
Source of Sample	Flowline	
Rm @ Meas. Temp	.36 @	90
Rmf @ Meas. Temp	.27 @	90
Rmc @ Meas. Temp	.49 @	90
Source of Rmf / Rmc	Charts	
Rm @ BHT	.3 @	109
Operating Rig Time	3 1/2 Hours	
Max Rec. Temp. F	109	
Equipment Number	10	
Location	Hays	
Recorded By	C. Desaire	
Witnessed By	Adam Kennedy	

<<< Fold Here >>>

All interpretations are opinions based on inferences from electrical or other measurements and we cannot and do not guarantee the accuracy or correctness of any interpretation, and we shall not, except in the case of gross or willful negligence on our part, be liable or responsible for any loss, costs, damages, or expenses incurred or sustained by anyone resulting from any interpretation made by any of our officers, agents or employees. These interpretations are also subject to our general terms and conditions set out in our current Price Schedule.

Comments

Thank you for using Log-Tech, Inc.
 (785) 625-3858
 Bushton, 3 E,
 8 S, 1 1/2 E, S Into

Database File: gshd.db
 Dataset Pathname: dil/gsstk2
 Presentation Format: dil2in
 Dataset Creation: Sat Aug 07 17:57:10 2010
 Charted by: Depth in Feet scaled 1:600

0 Gamma Ray 150
-200 SP 0

0 Shallow Resistivity 50
0 Deep Resistivity 50

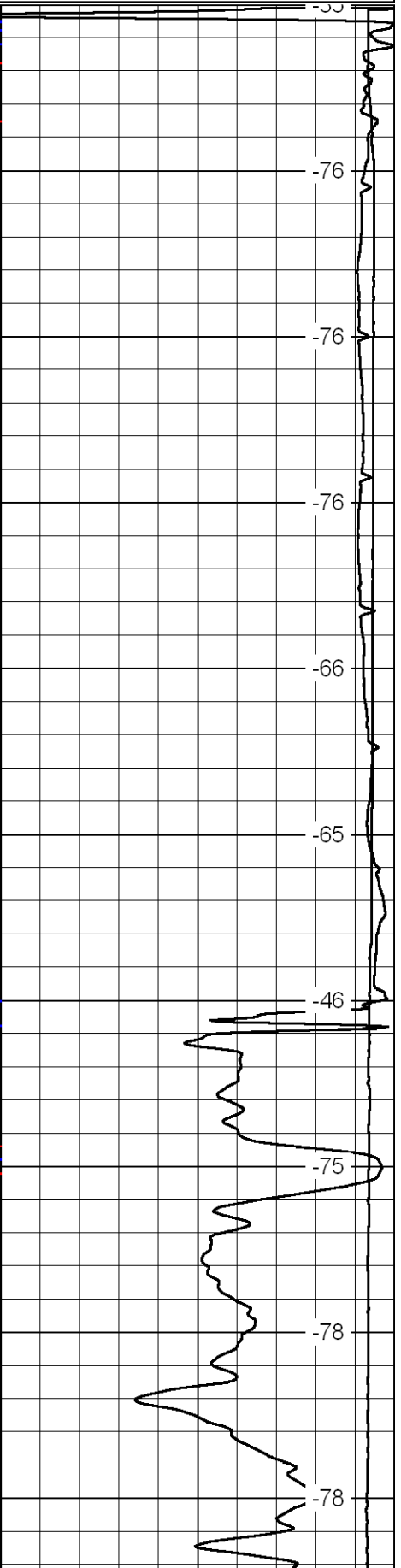
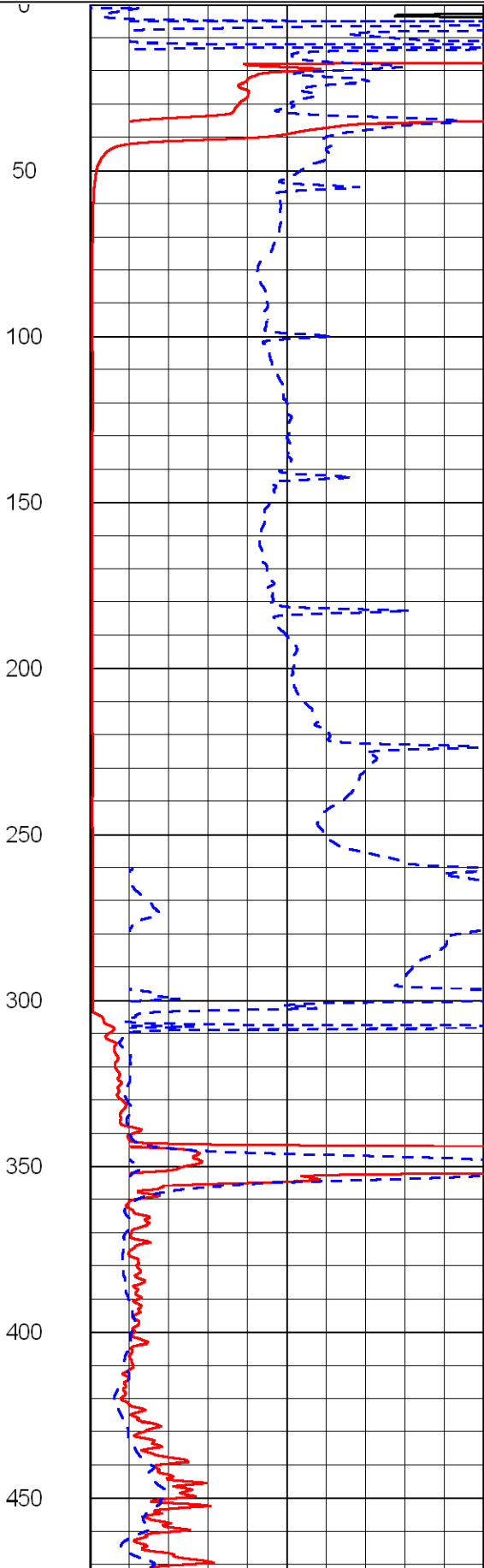
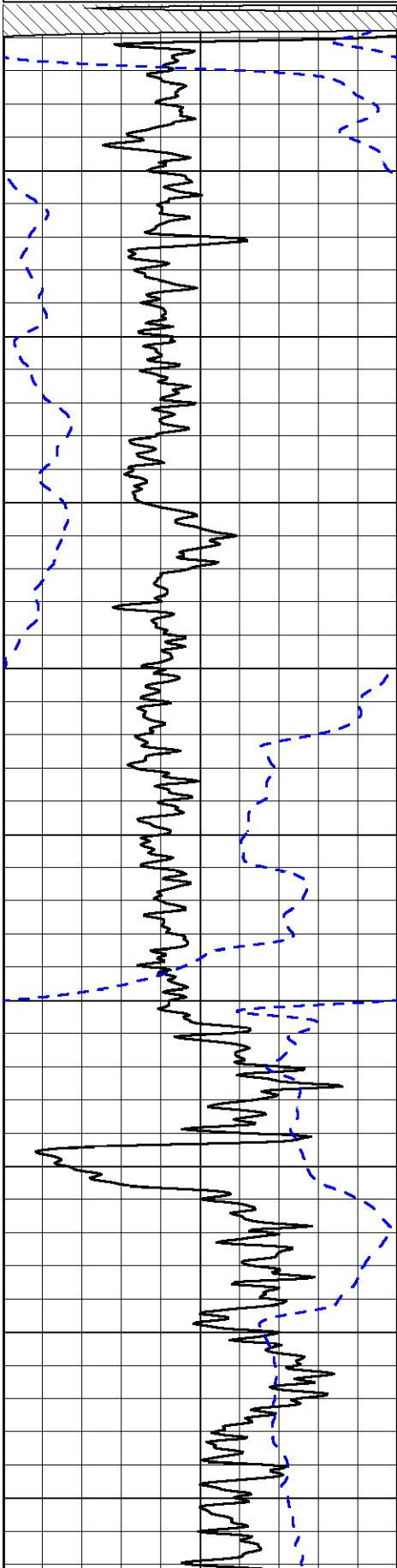
LSPD

1000 Conductivity 0

15000 Line Tension 0

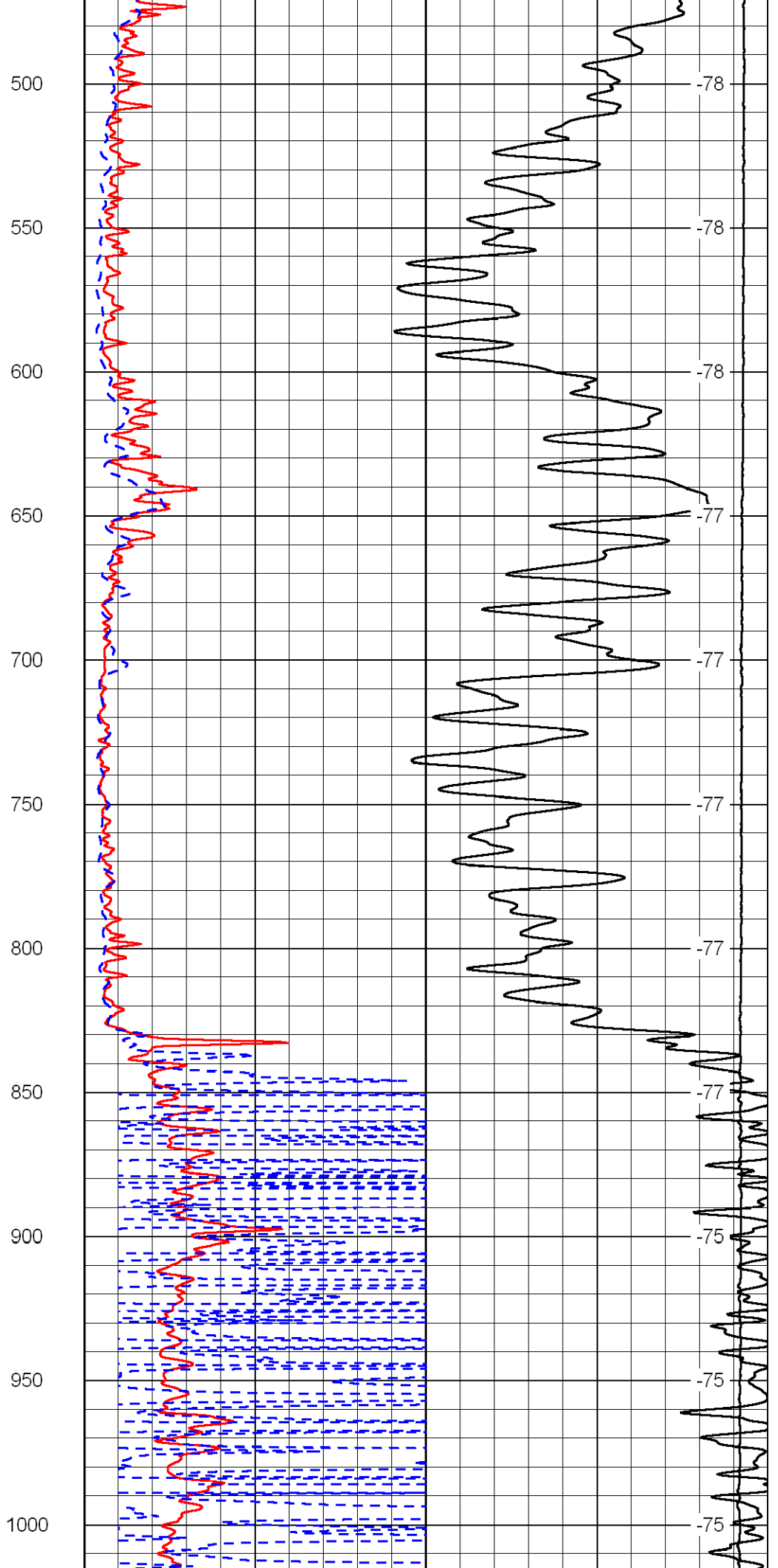
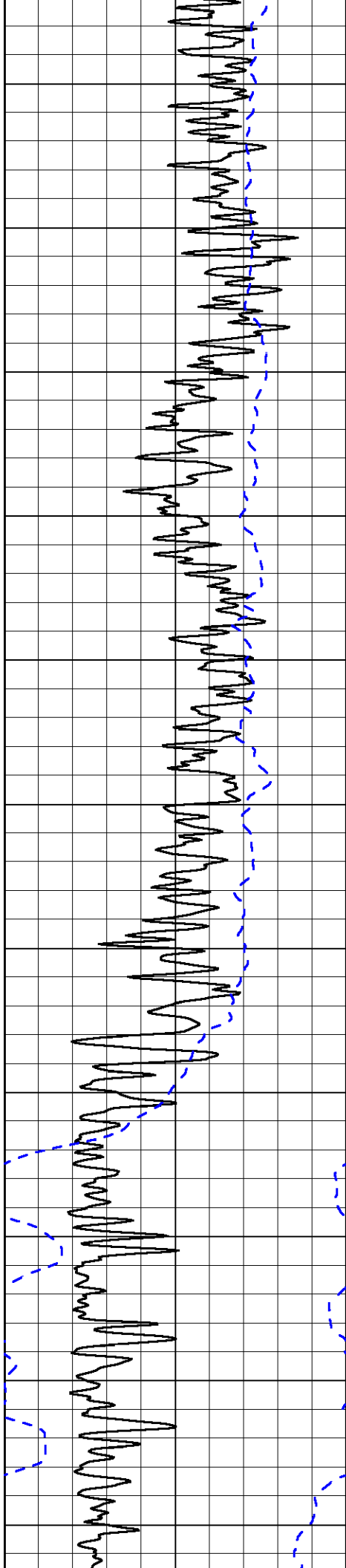
50 Shallow Resistivity 500

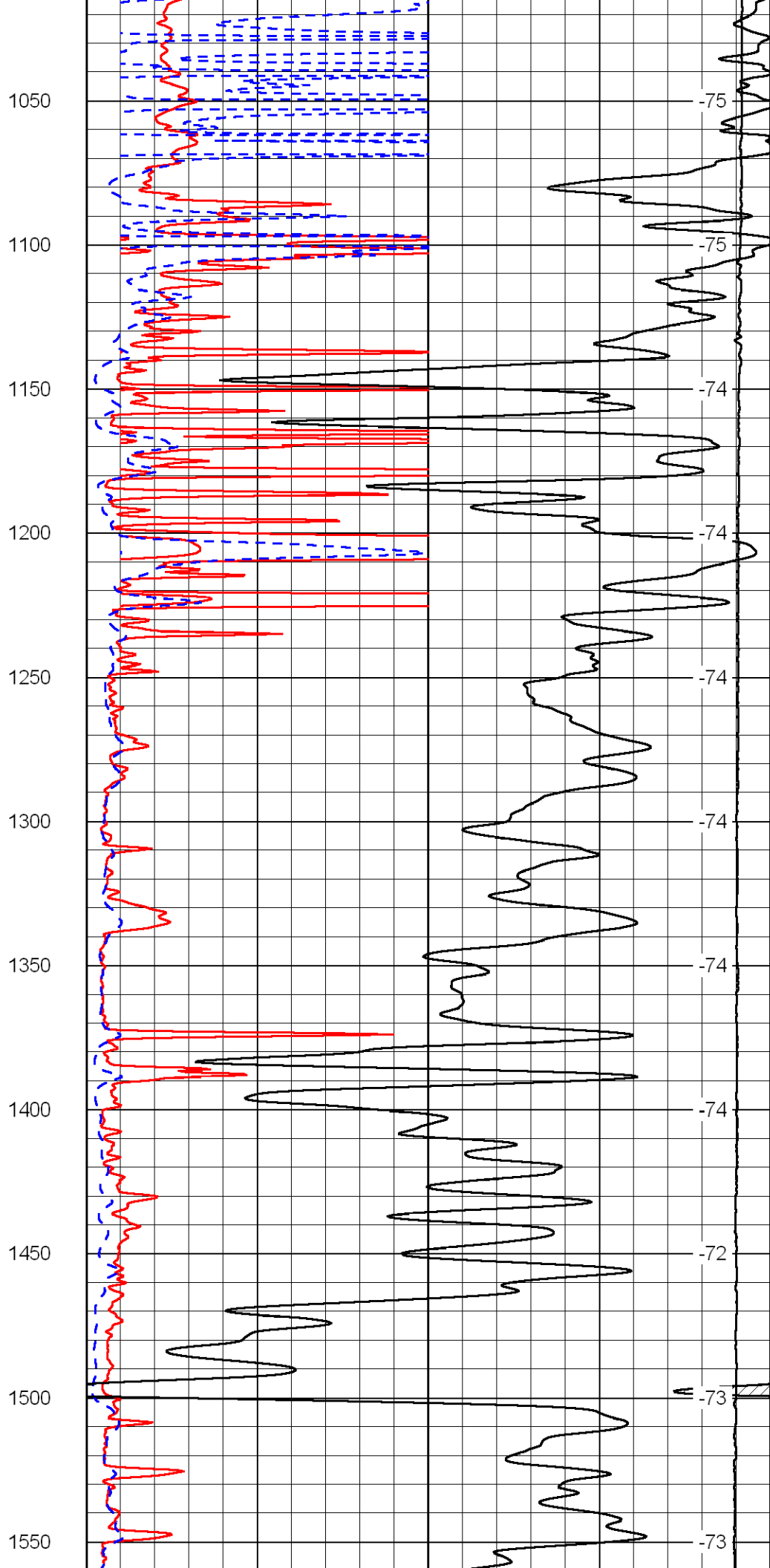
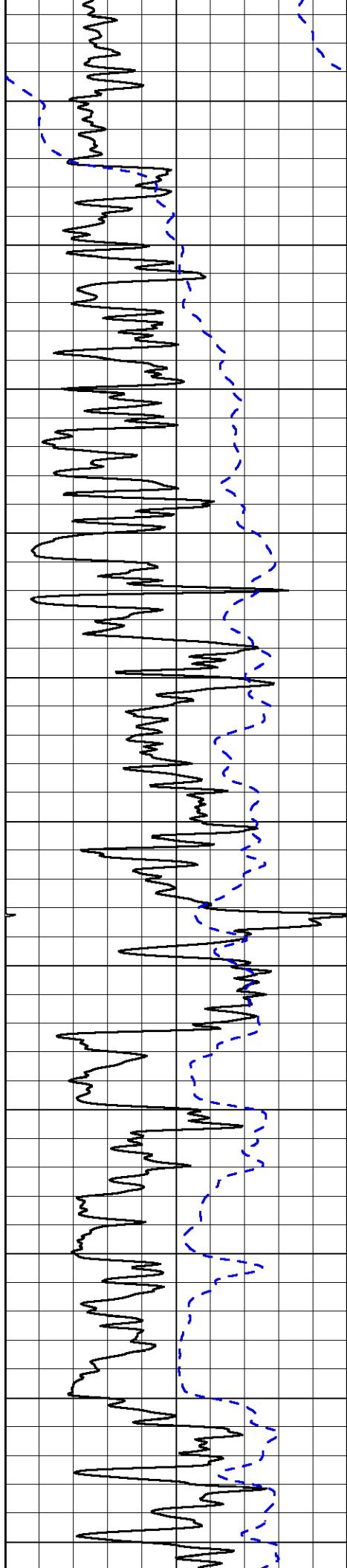
50 Deep Resistivity 500

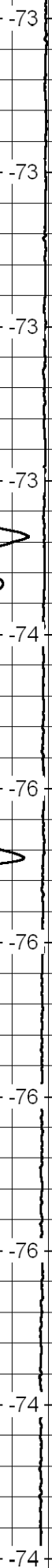
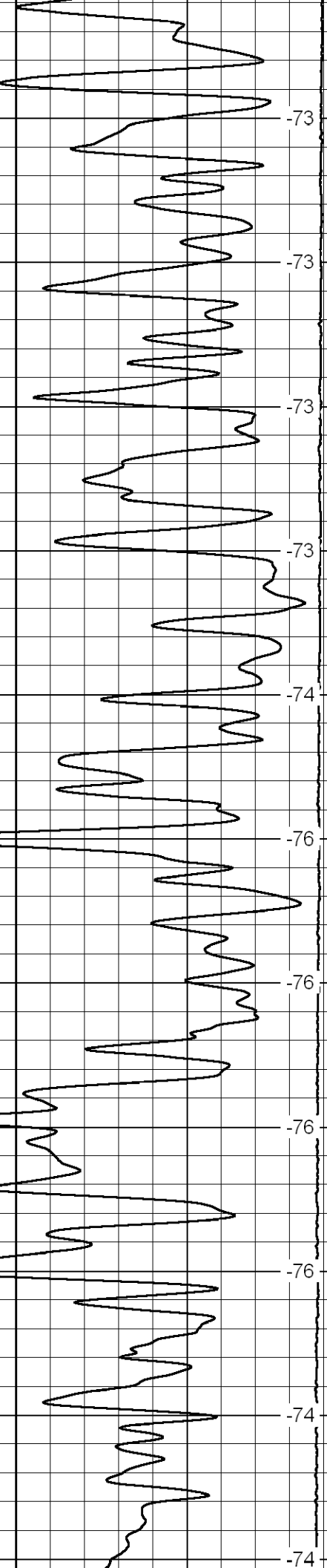
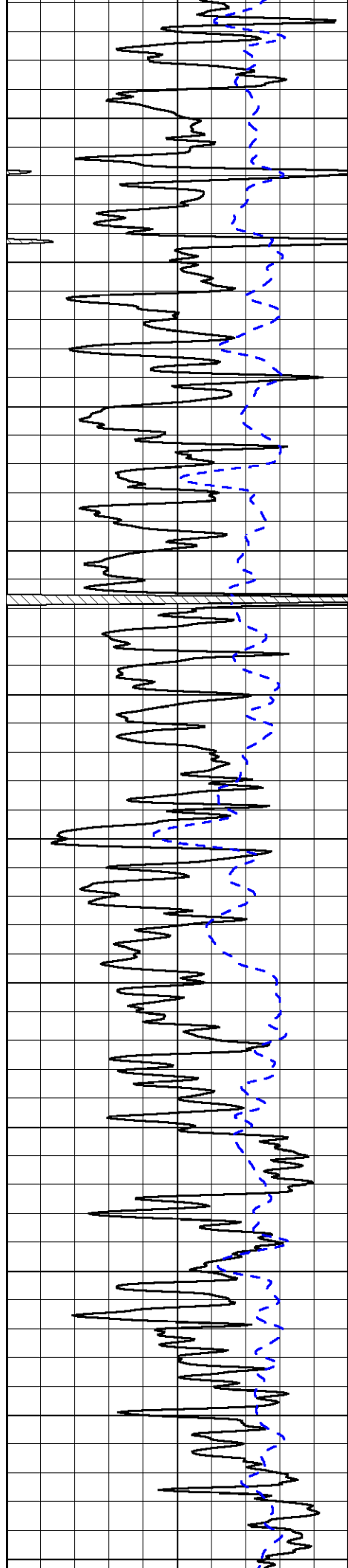


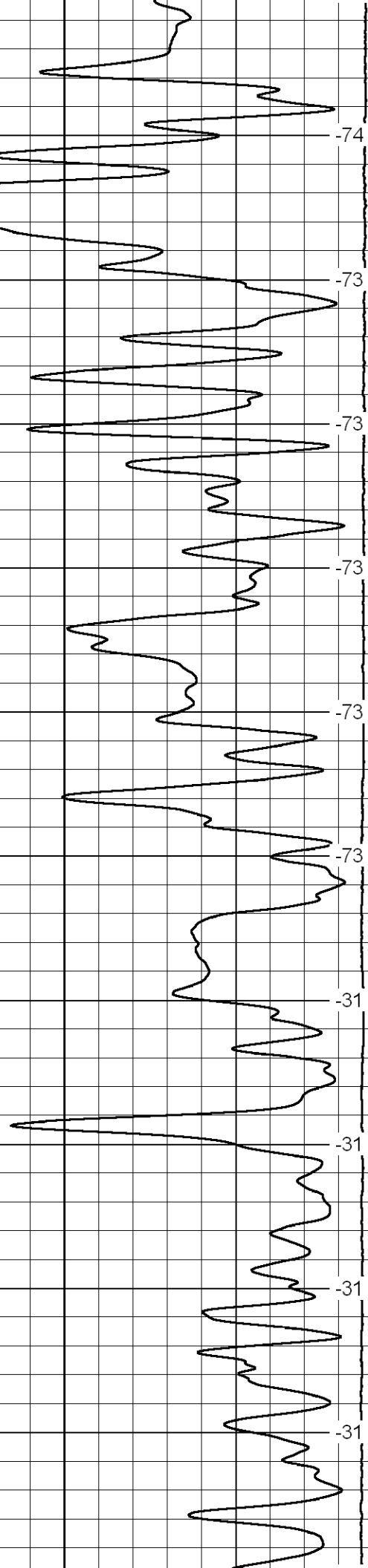
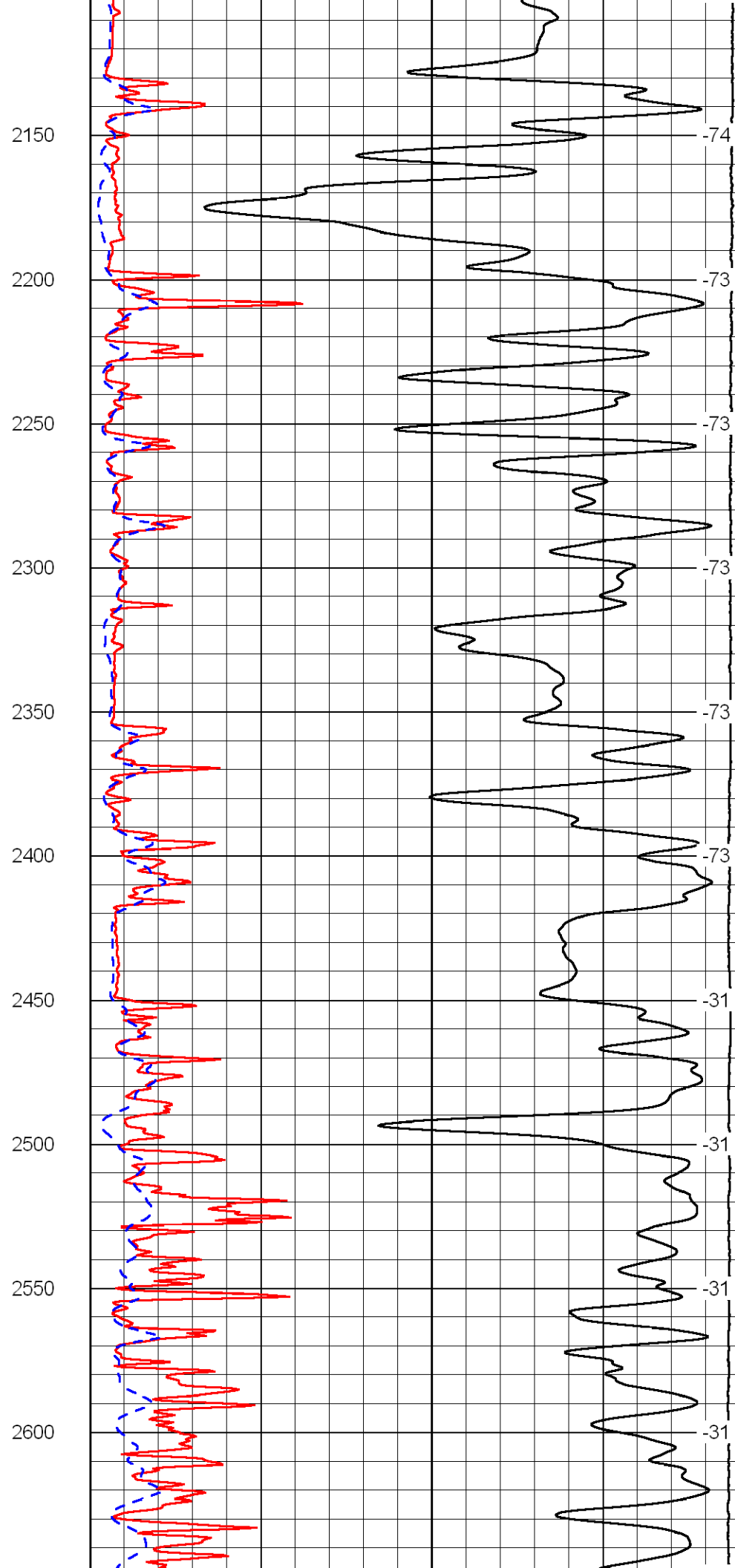
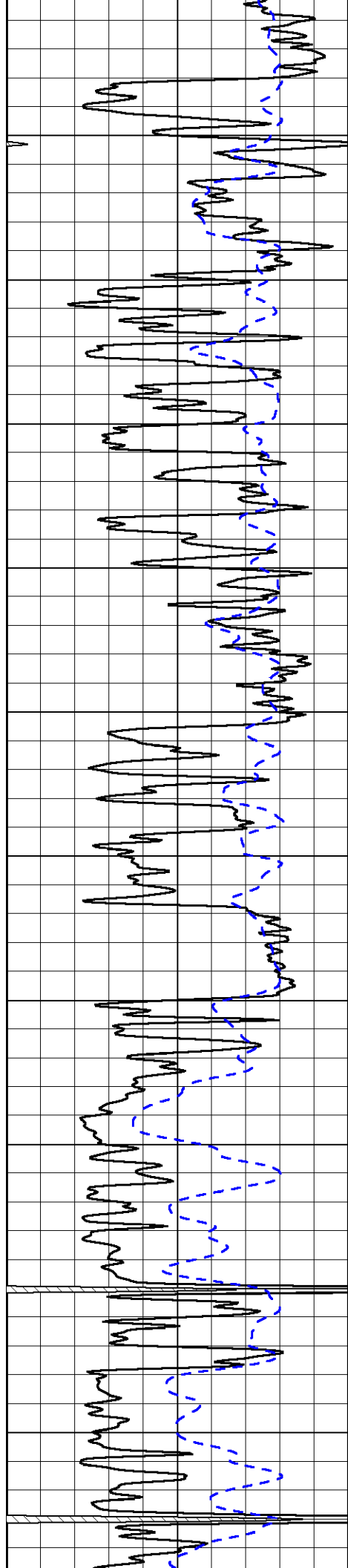
0
50
100
150
200
250
300
350
400
450

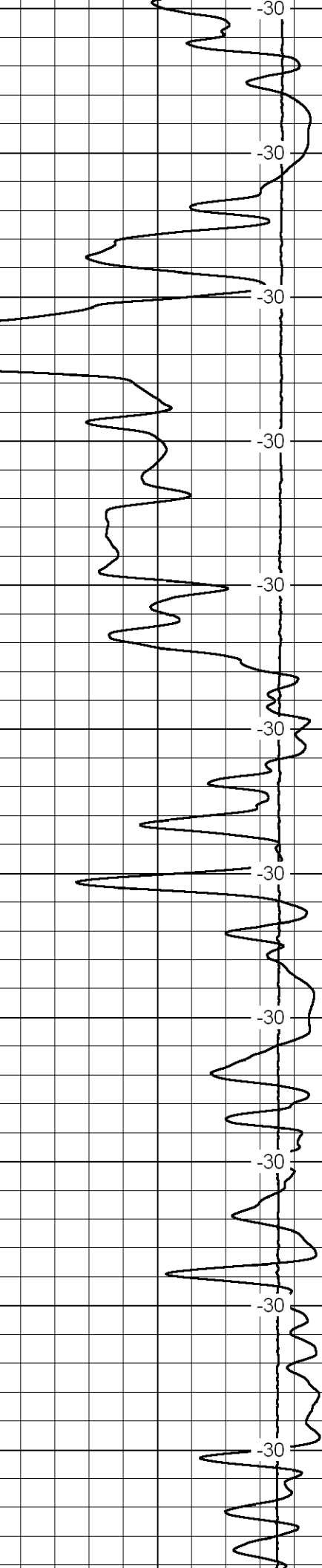
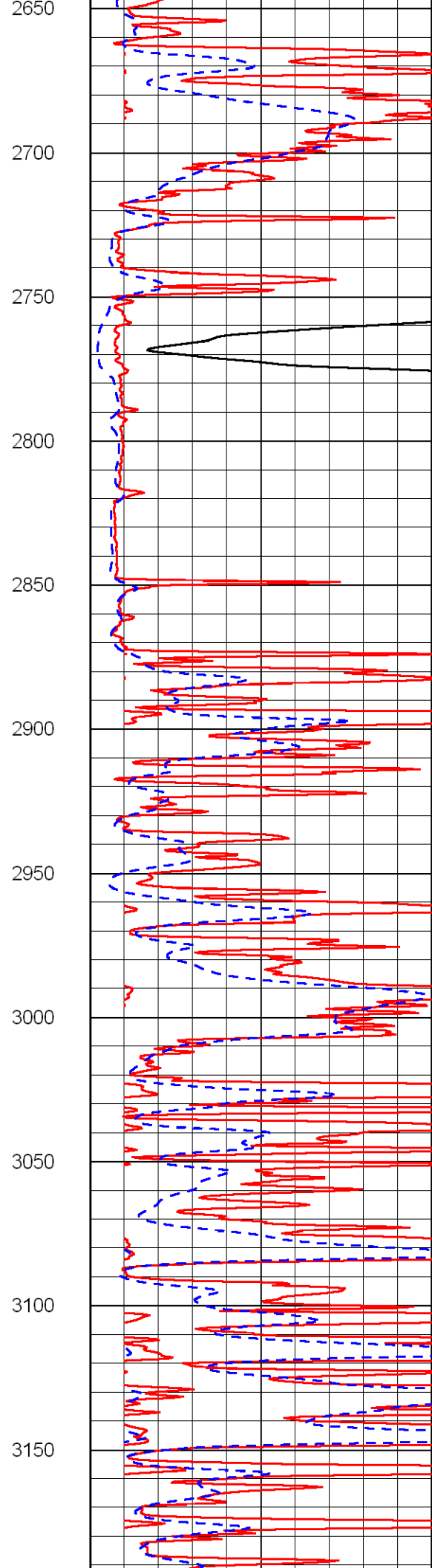
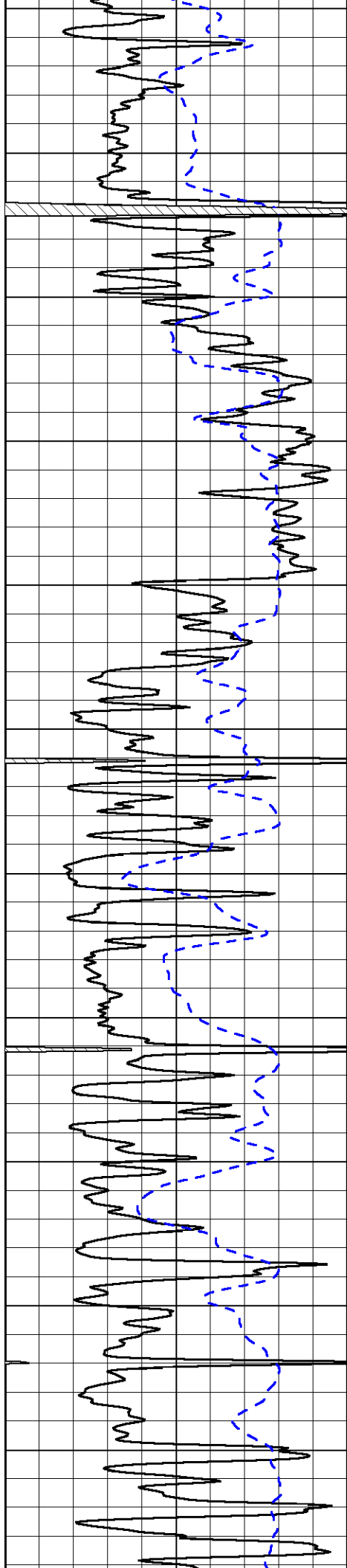
0
-76
-76
-76
-66
-65
-46
-75
-78
-78

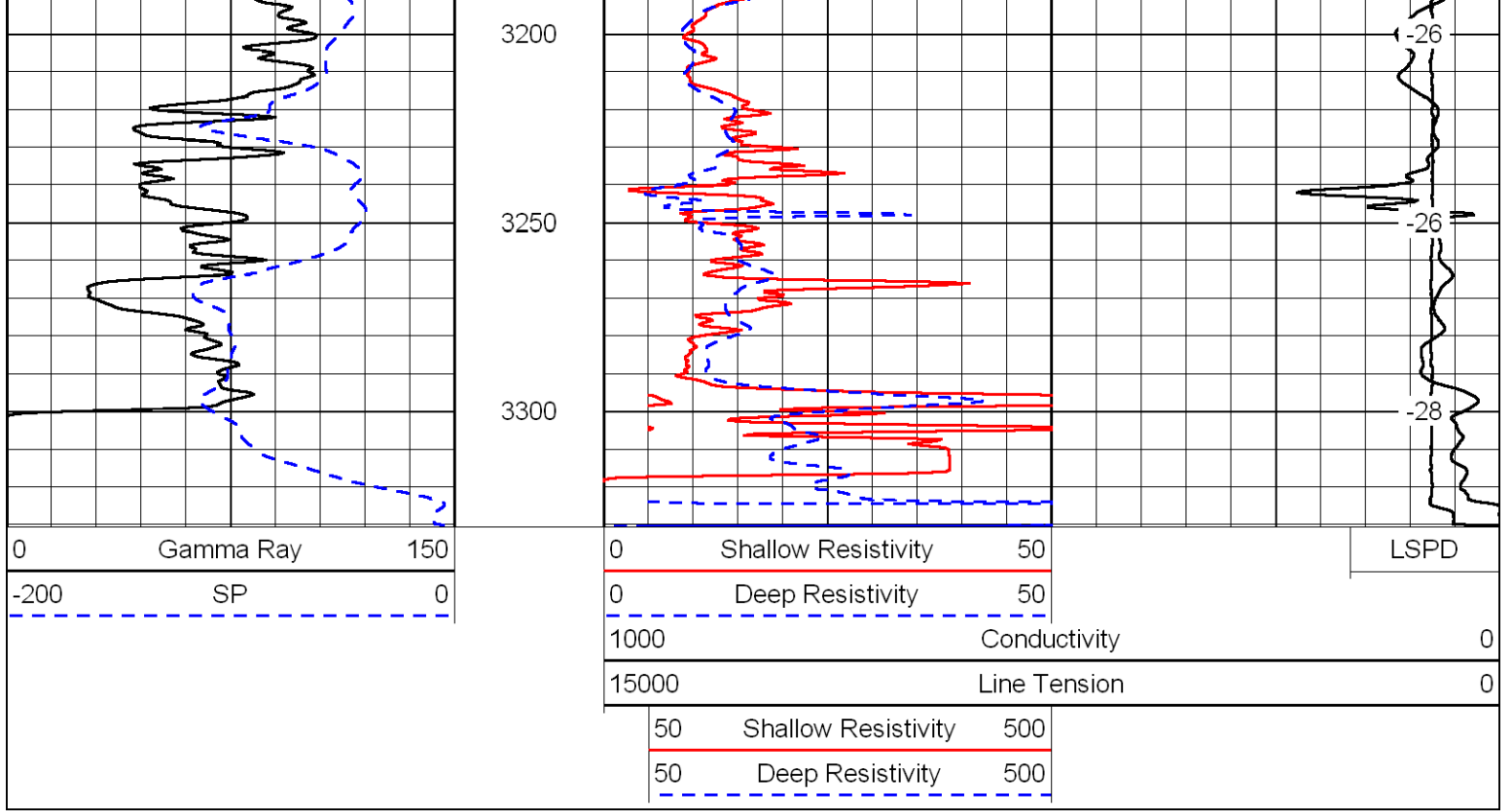




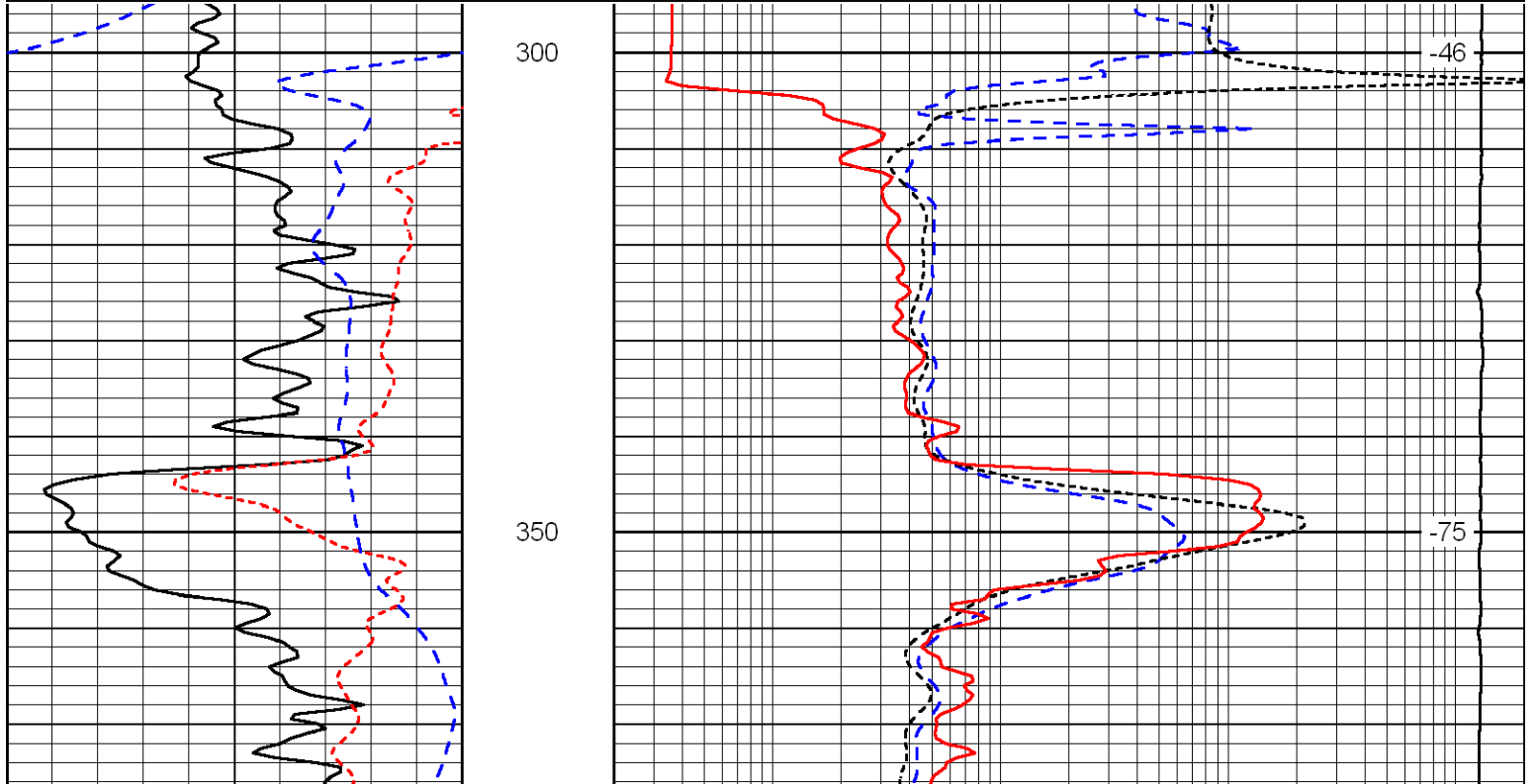
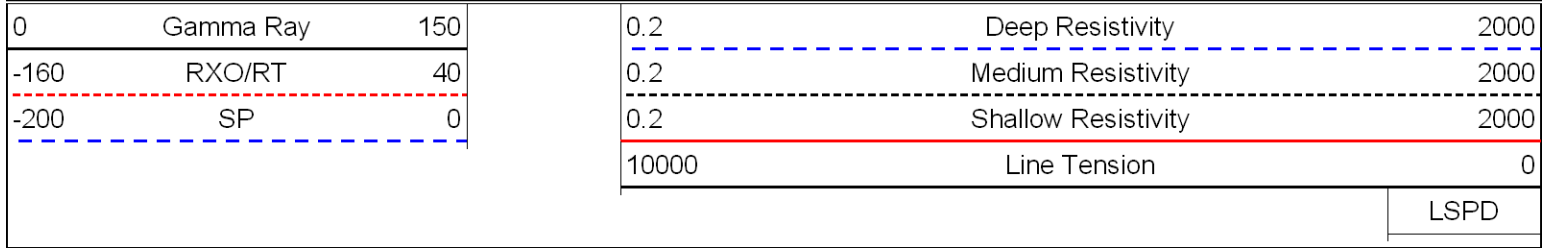


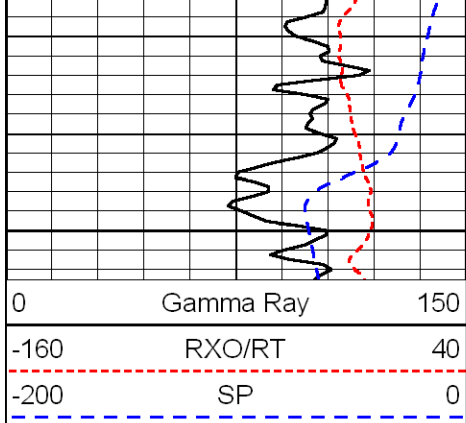






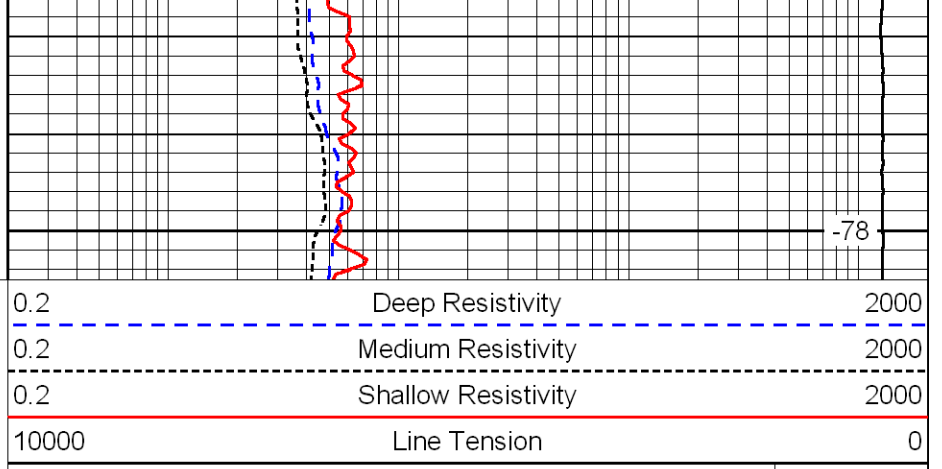
Database File: gshd.db
 Dataset Pathname: dil/gsstk
 Presentation Format: dil
 Dataset Creation: Sat Aug 07 17:28:36 2010
 Charted by: Depth in Feet scaled 1:240





400

0	Gamma Ray	150
-160	RXO/RT	40
-200	SP	0



-78

0.2	Deep Resistivity	2000
0.2	Medium Resistivity	2000
0.2	Shallow Resistivity	2000
10000	Line Tension	0

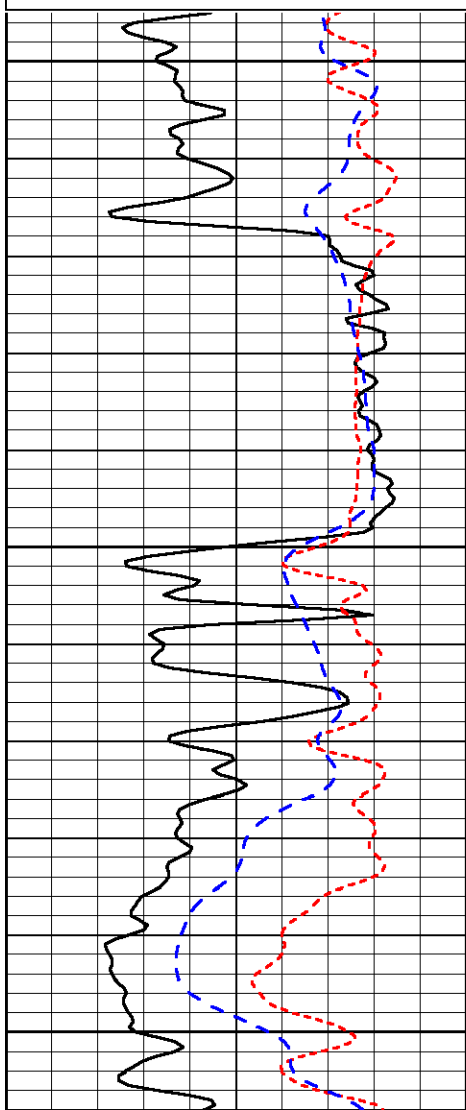
LSPD

Database File: gshd.db
 Dataset Pathname: dil/gsstk2
 Presentation Format: dil
 Dataset Creation: Sat Aug 07 17:57:10 2010
 Charted by: Depth in Feet scaled 1:240

0	Gamma Ray	150
-160	RXO/RT	40
-200	SP	0

0.2	Deep Resistivity	2000
0.2	Medium Resistivity	2000
0.2	Shallow Resistivity	2000
10000	Line Tension	0

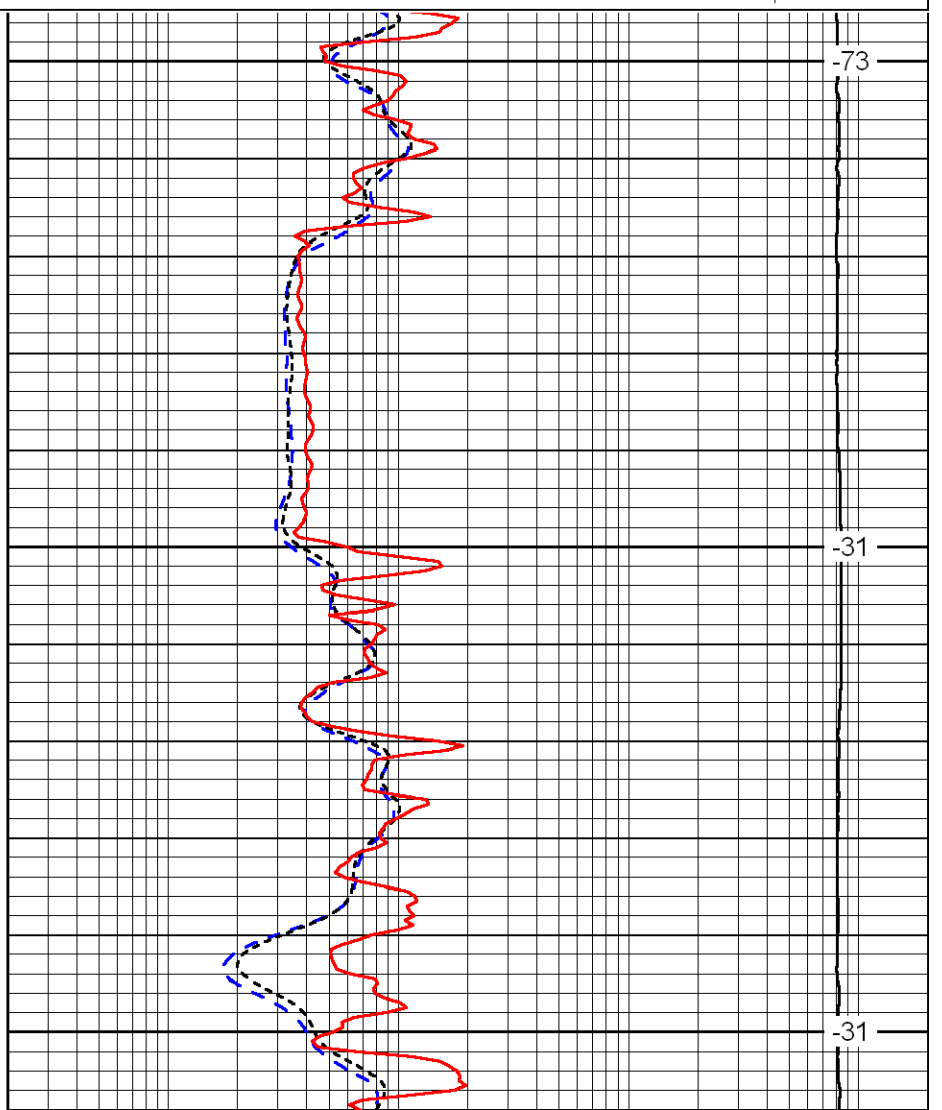
LSPD



2400

2450

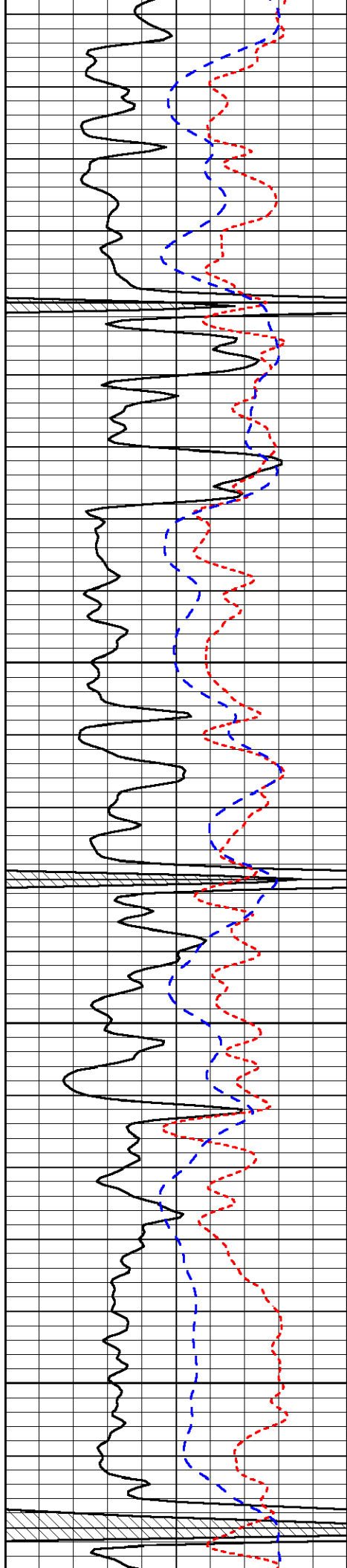
2500



-73

-31

-31

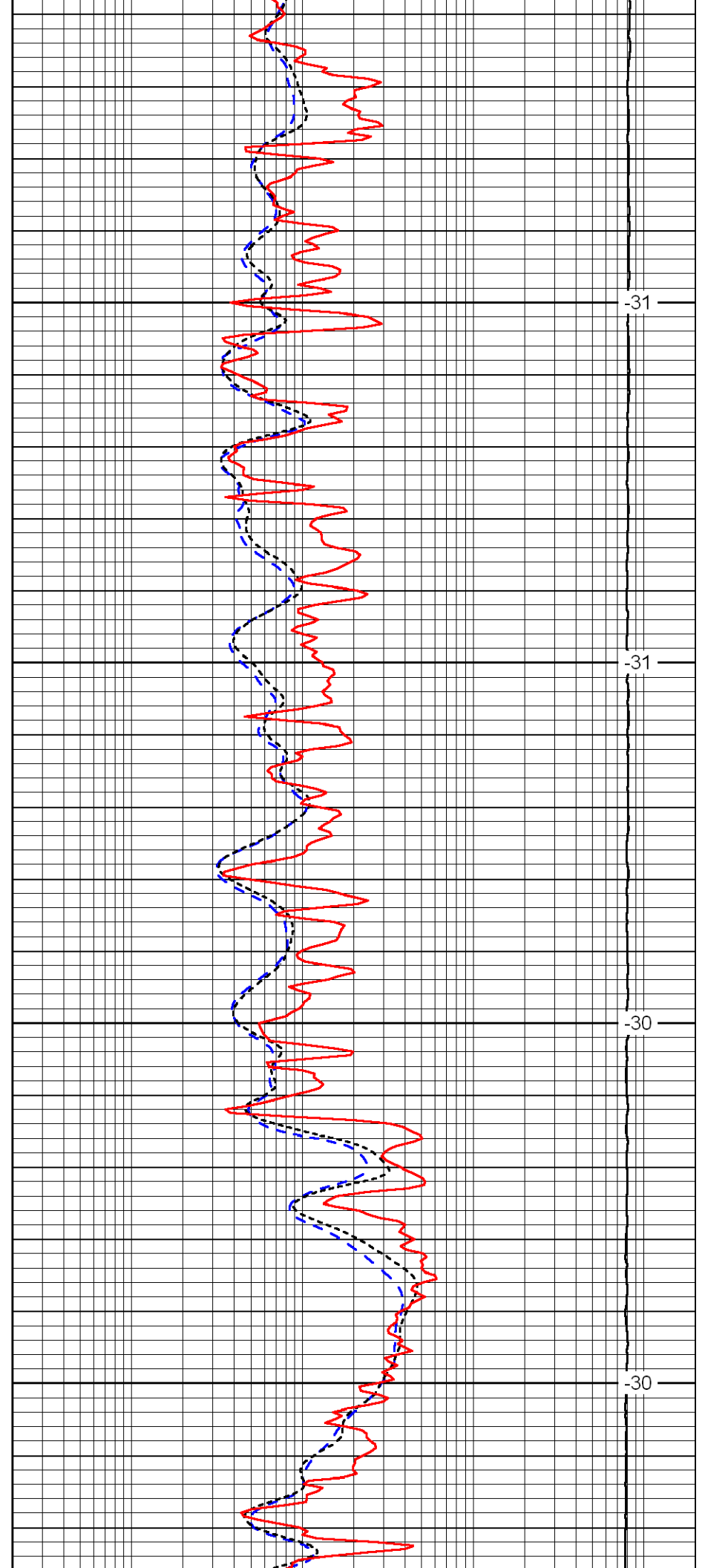


2550

2600

2650

2700

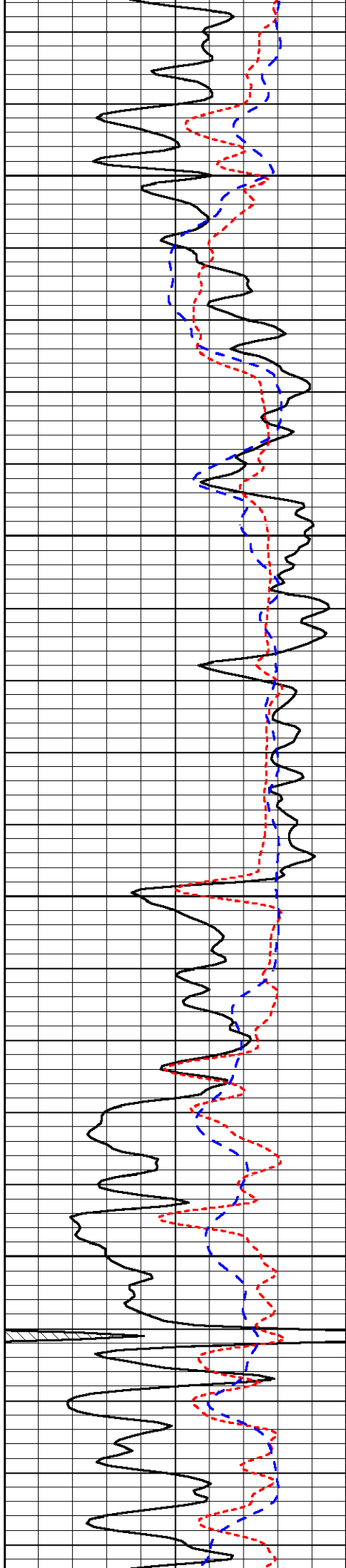


-31

-31

-30

-30

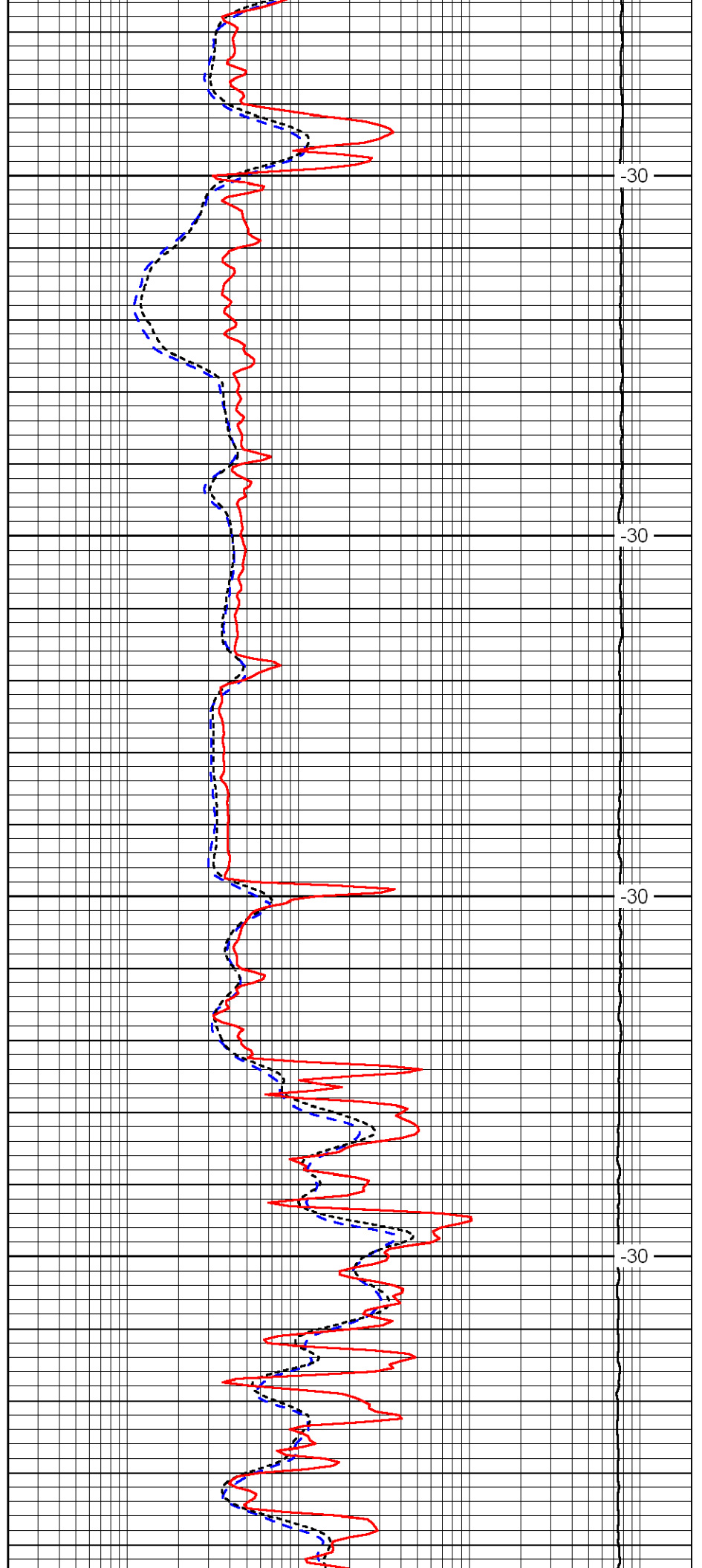


2750

2800

2850

2900

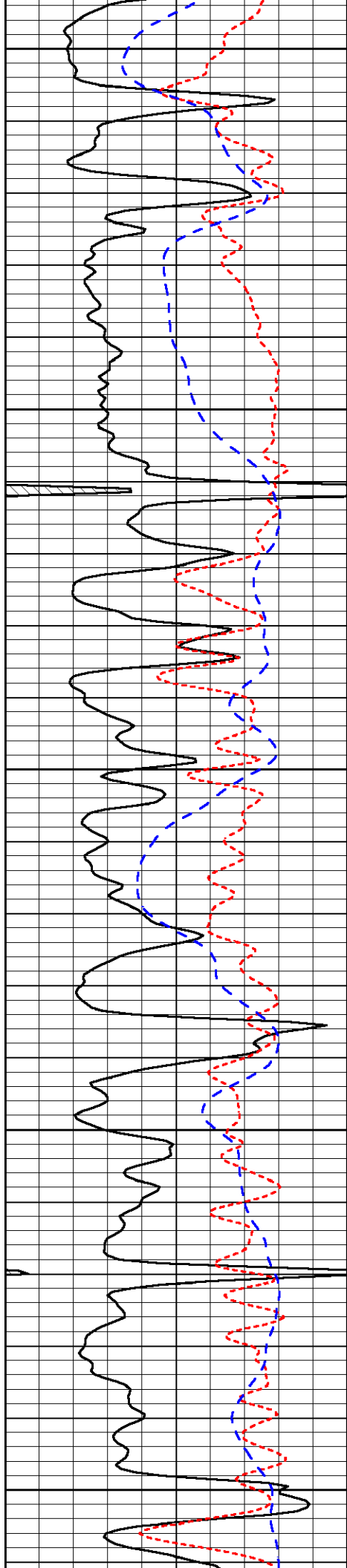


-30

-30

-30

-30



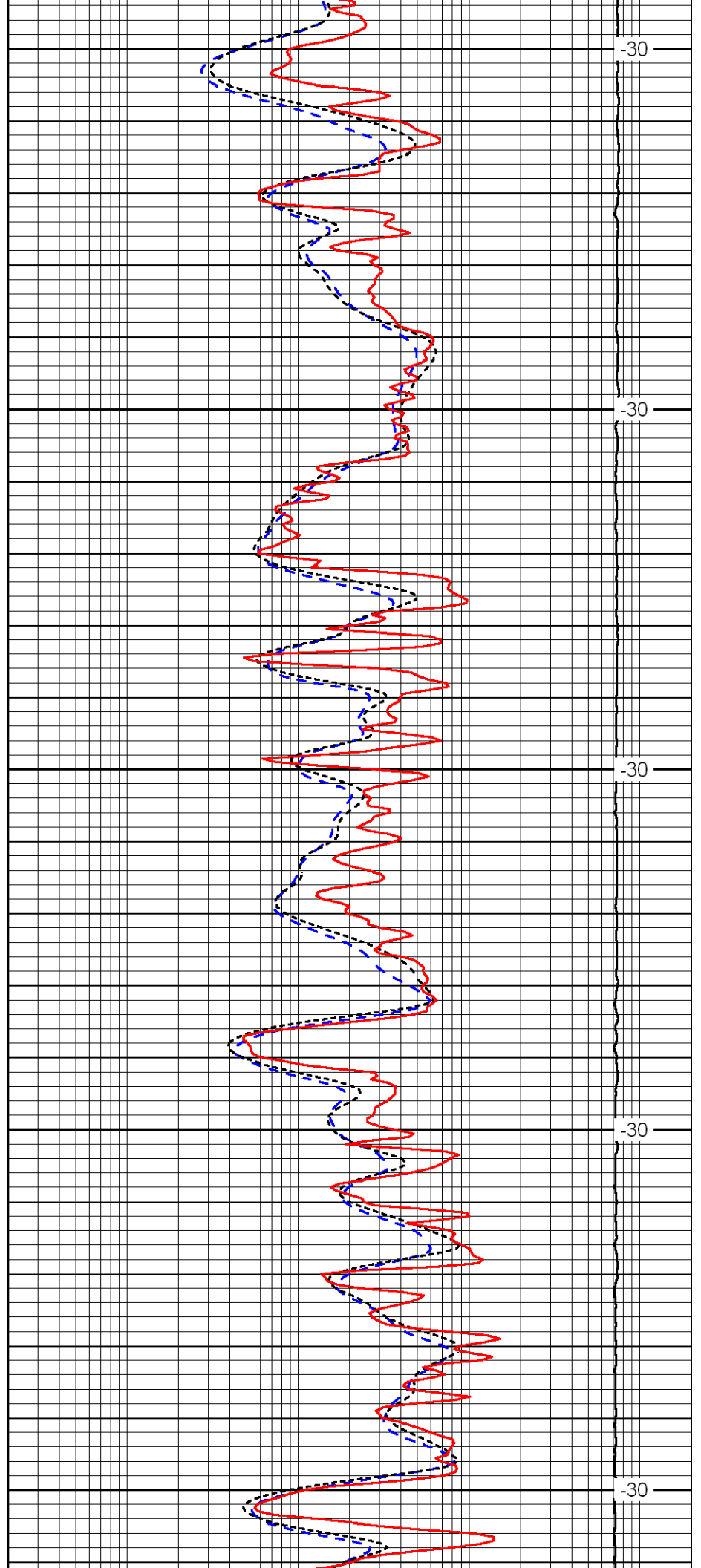
2950

3000

3050

3100

3150



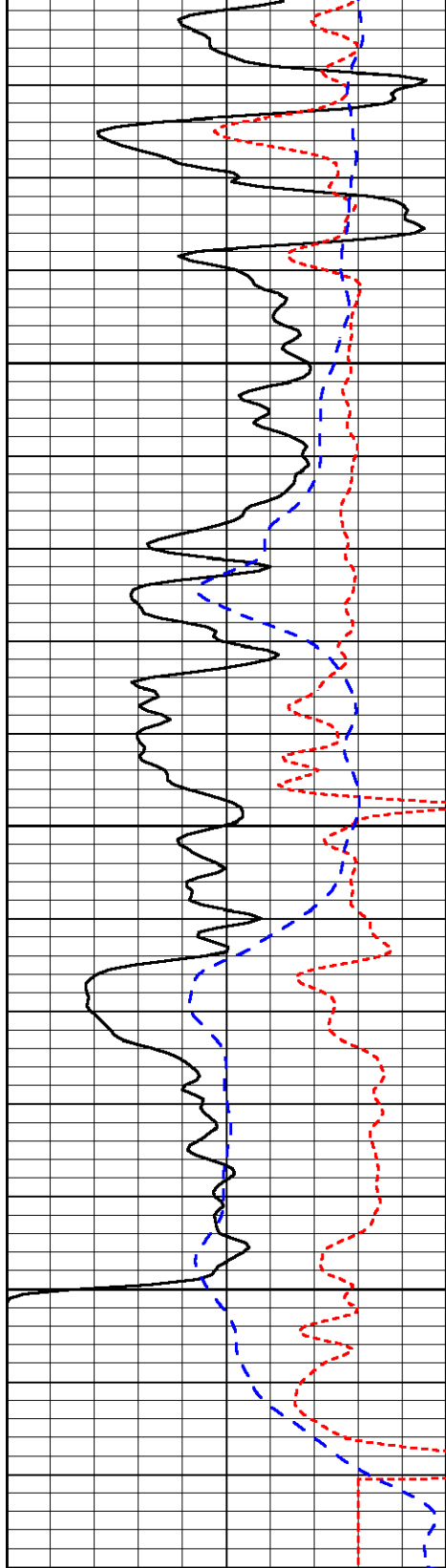
30

30

30

30

30

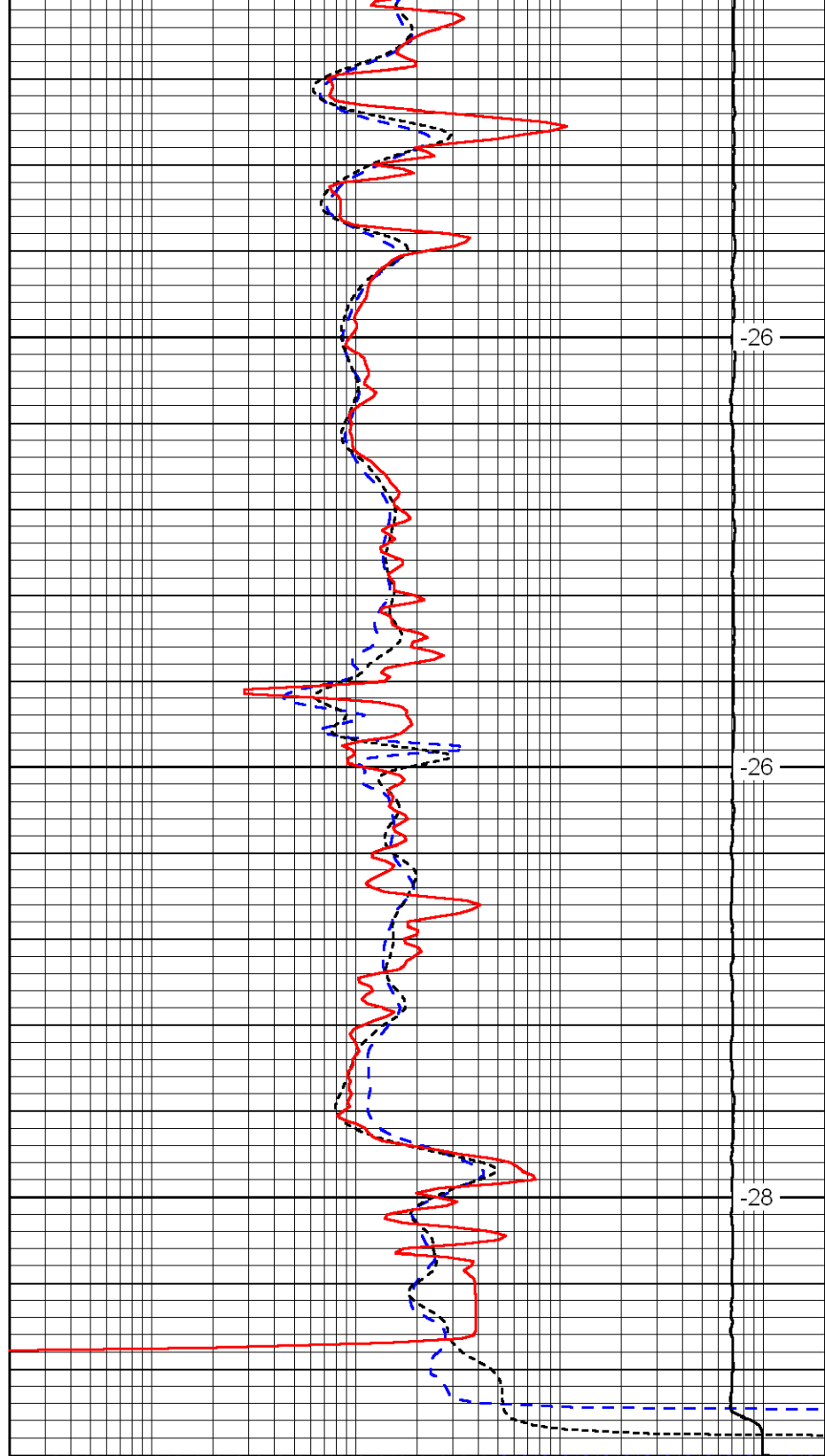


0	Gamma Ray	150
-160	RXO/RT	40
-200	SP	0

3200

3250

3300



0.2	Deep Resistivity	2000
0.2	Medium Resistivity	2000
0.2	Shallow Resistivity	2000
10000	Line Tension	0

-26

-26

-28

LSPD