



Dual Compensated Porosity Log

DIGITAL LOG (785) 625-3858

API No. 15-009-25,450-00-00	Company L.D. Drilling, Inc.	Elevation 1830
	Well Voth No.1-19	K.B. 1835
	Field Fort Zarah North	D.F. 1830
	County Barton	G.L. 1830
	State Kansas	
Location 1520' FNL & 1020' FEL	Other Services DIL/MEL	
Sec: 19 Twp: 19s Rge: 12w		

Permanent Datum	Ground Level	Elevation
Log Measured From	Kelly Bushing	5 Ft. Above Perm. Datum
Drilling Measured From	Kelly Bushing	

Date	7/25/2010
Run Number	One
Type Log	CNL / CDL
Depth Driller	3520
Depth Logger	3519
Bottom Logged Interval	3499
Top Logged Interval	2600
Type Fluid In Hole	Chemical
Salinity, PPM CL	8,000
Density	9.2
Level	Full
Max. Rec. Temp. F	113
Operating Rig Time	3 1/2 Hours
Equipment -- Location	17 Hays
Recorded By	C. Desaire
Witnessed By	Kim Shoemaker

Borehole Record				Casing Record			
Run No	Bit	From	To	Size	Wgt.	From	To
One	12.25	0	338	8.625	24#	0	338
Two	7.875	338	TD				

<<< Fold Here >>>

All interpretations are opinions based on inferences from electrical or other measurements and we cannot and do not guarantee the accuracy or correctness of any interpretation, and we shall not, except in the case of gross or willful negligence on our part, be liable or responsible for any loss, costs, damages, or expenses incurred or sustained by anyone resulting from any interpretation made by any of our officers, agents or employees. These interpretations are also subject to our general terms and conditions set out in our current Price Schedule.

Comments

Thank you for using Log-Tech, Inc.
(785) 625-3858

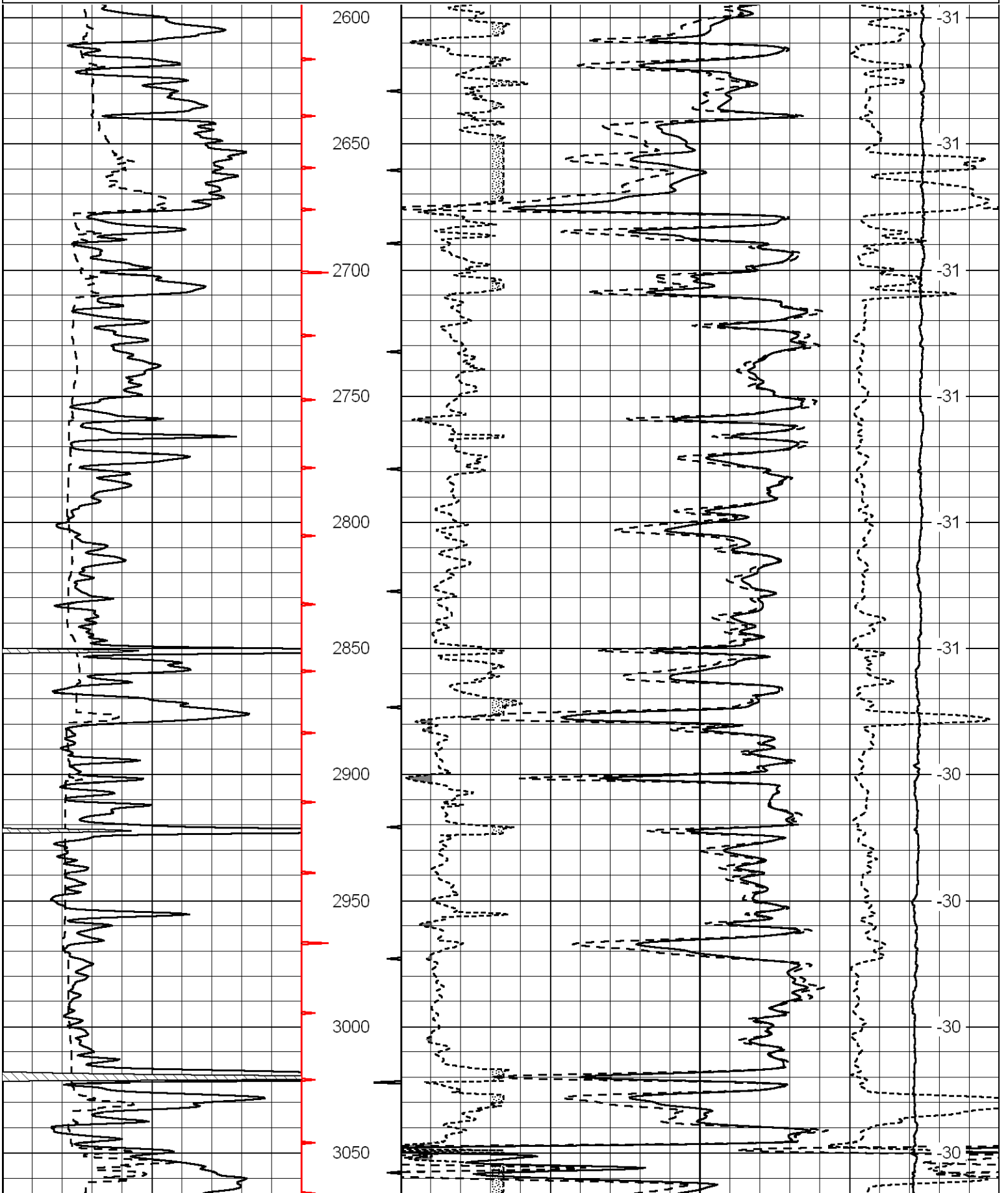
Great Bend, E to Doonans,
2 N, 1/2 W, S Into

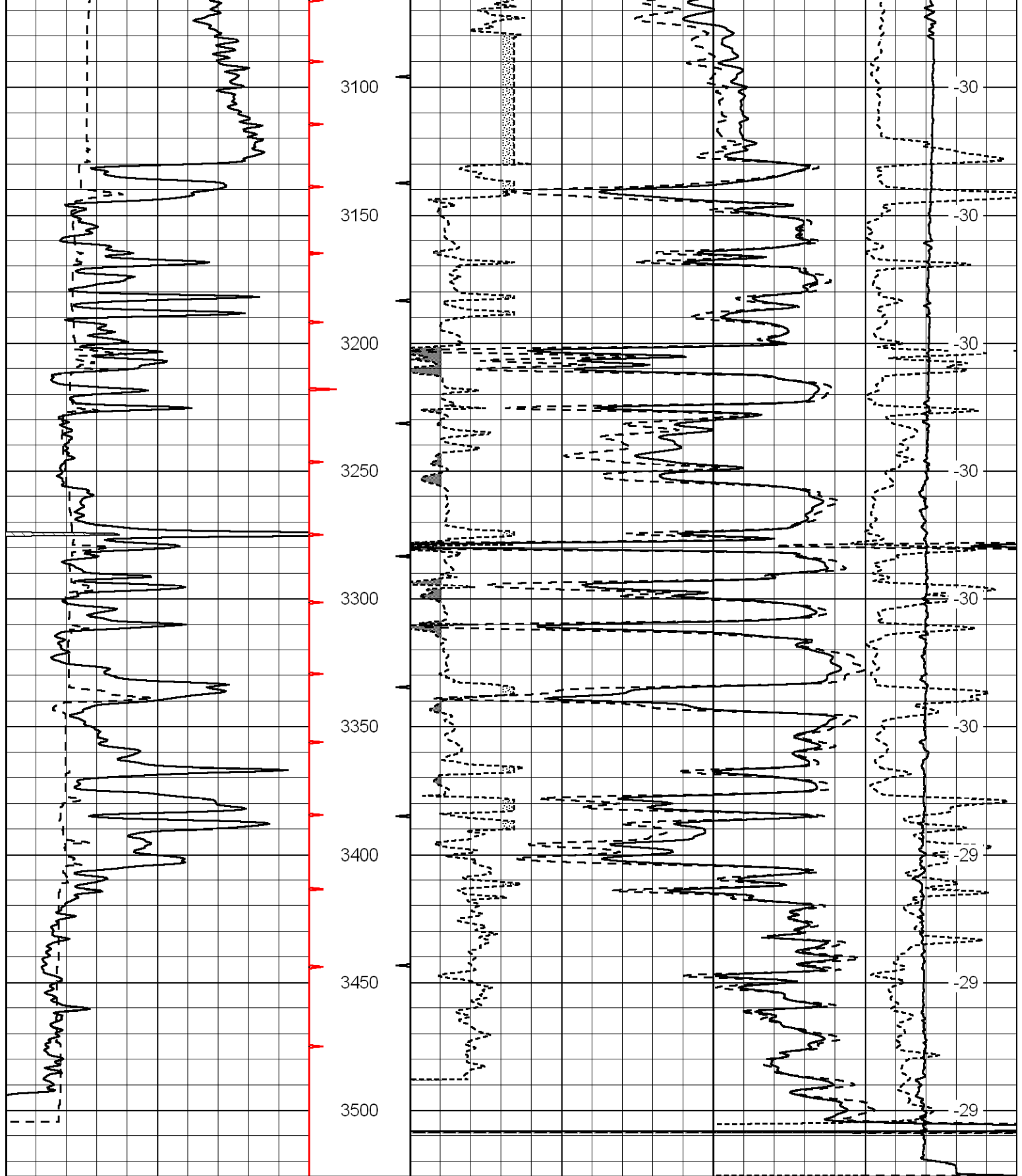
Database File:	ldhd.db
Dataset Pathname:	dil/ldstk
Presentation Format:	cdl
Dataset Creation:	Sun Jul 25 21:47:28 2010
Charted by:	Depth in Feet scaled 1:600

0	Gamma Ray	150
6	Caliper (GAPI)	16

30	Compensated Density (pu)			-10	
2	Bulk Density (g/cc)			3	
15000	Line Tension (lb)			0	
2.625	DGA (g/cc)	3.425	-0.25	Correction (g/cc)	0.25

LSPD
(ft/min)





0	Gamma Ray	150
6	Caliper (GAPI)	16

30	Compensated Density (pu)			-10	
2	Bulk Density (g/cc)			3	
15000	Line Tension (lb)			0	
2.625	DGA (g/cc)	3.425	-0.25	Correction (g/cc)	0.25

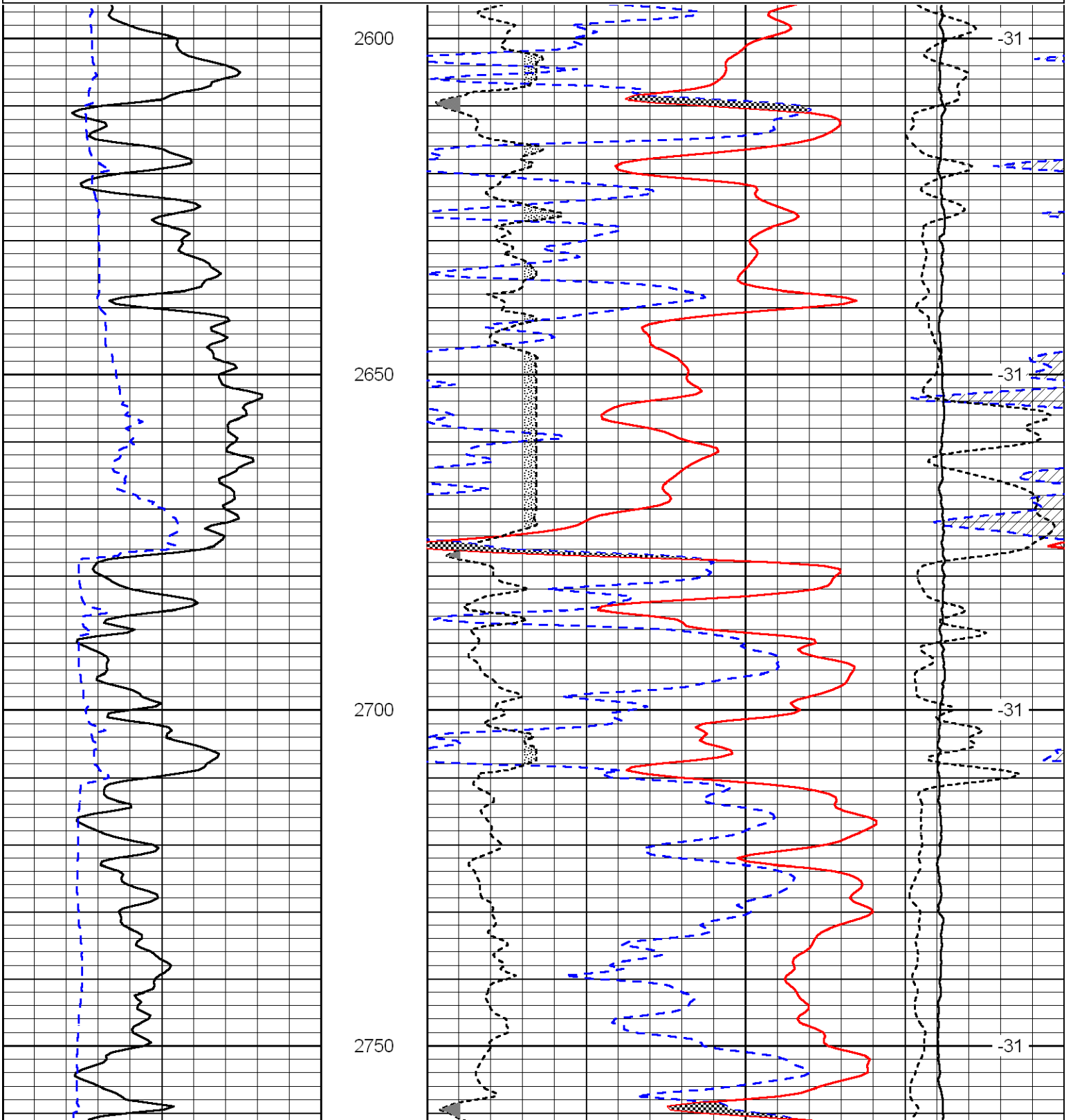
LSPD
(ft/min)

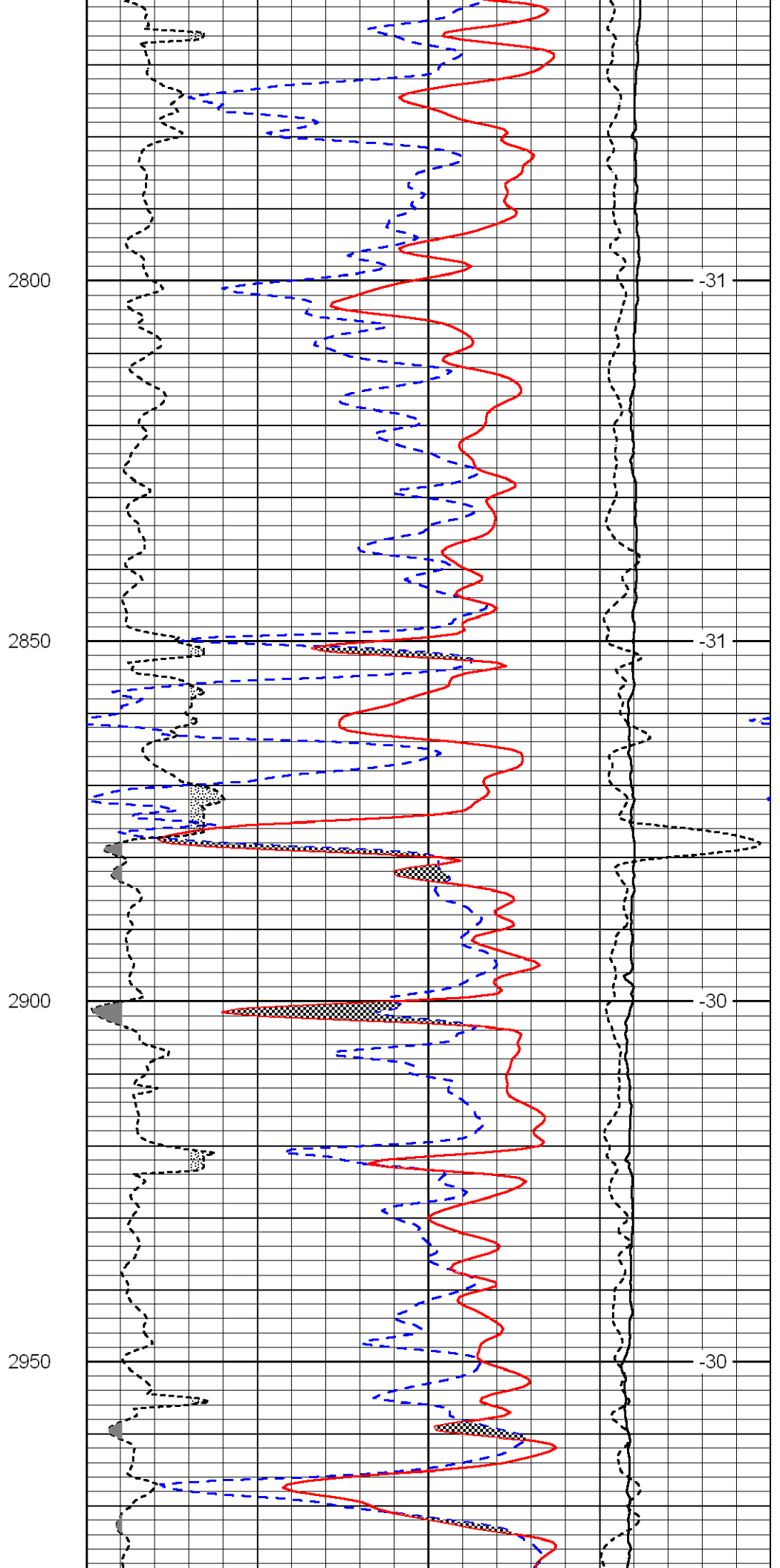
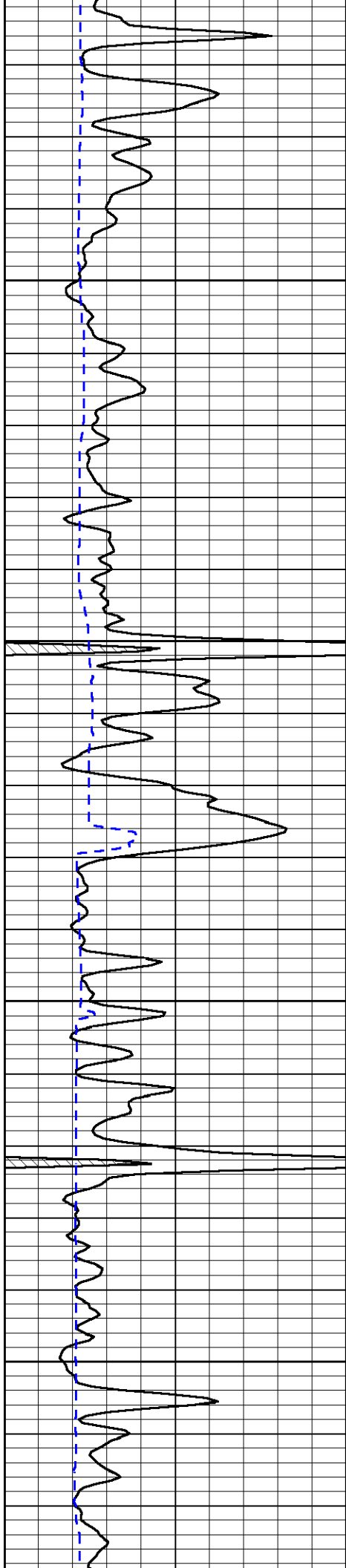
Database File: ldhd.db
 Dataset Pathname: dil/ldstk
 Presentation Format: cndlSpec
 Dataset Creation: Sun Jul 25 21:47:28 2010
 Charted by: Depth in Feet scaled 1:240

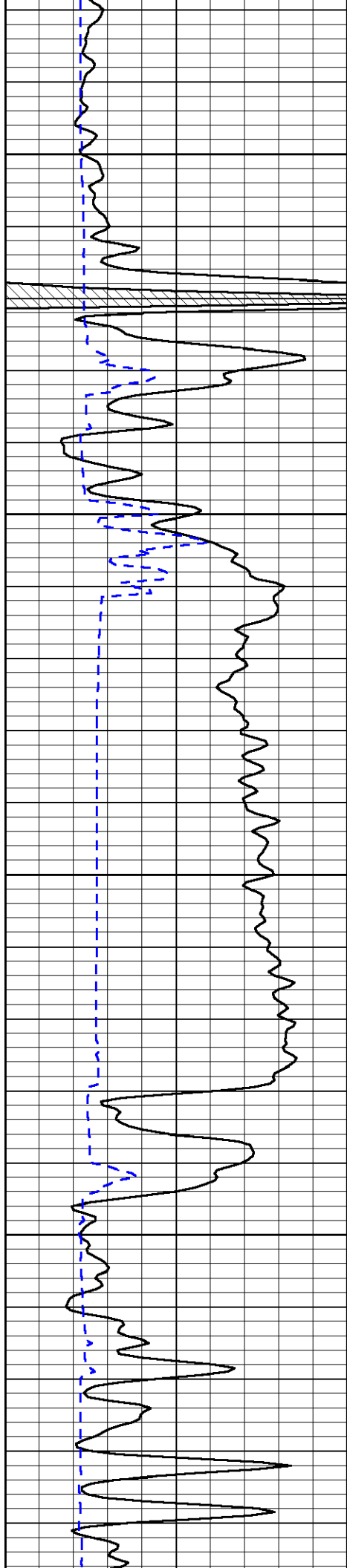
0	Gamma Ray	150
6	Caliper (GAPI)	16

30	Compensated Neutron (pu)		-10
30	Compensated Density (2.71 ma) (pu)		-10
2.625	DGA (g/cc)	3.425	-0.25
		Correction (g/cc)	0.25
10000	Line Tension (lb)		0

LSPD
(ft/min)





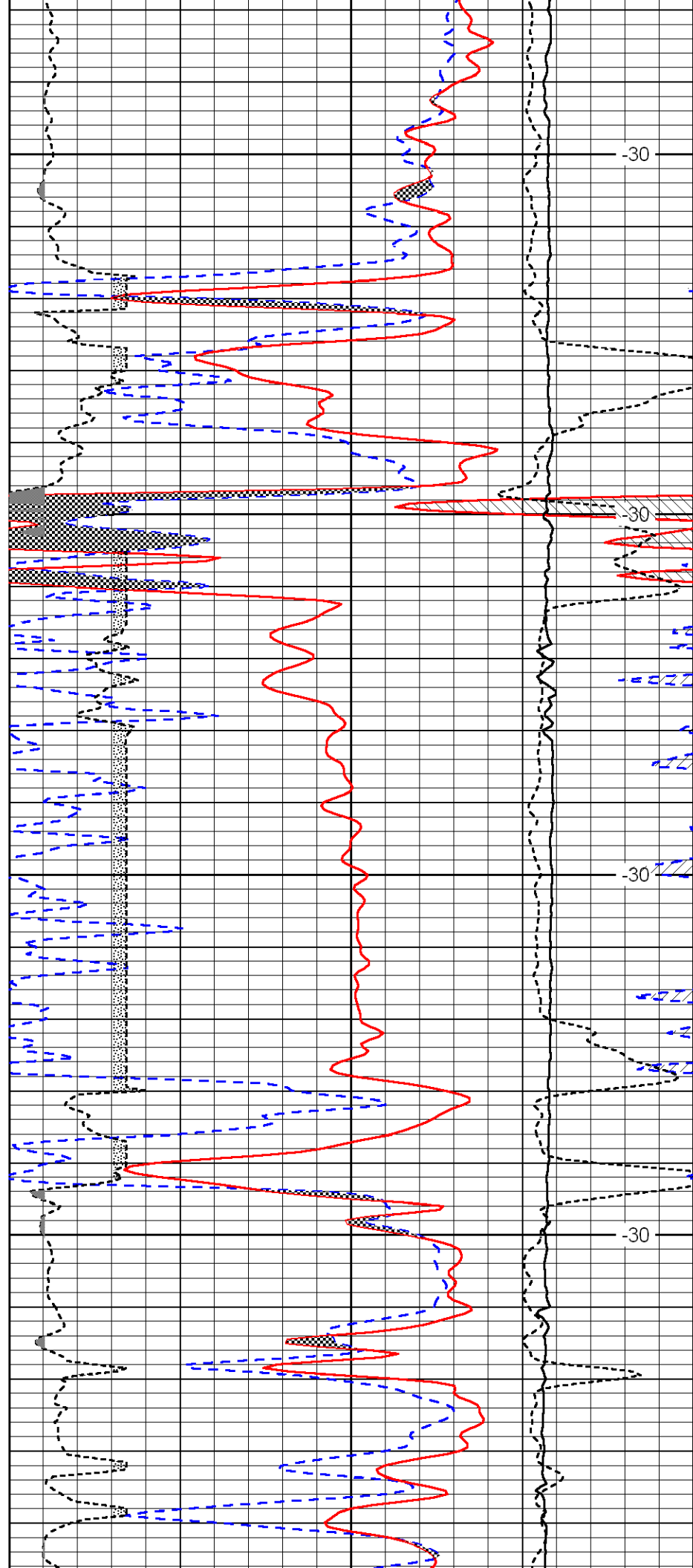


3000

3050

3100

3150

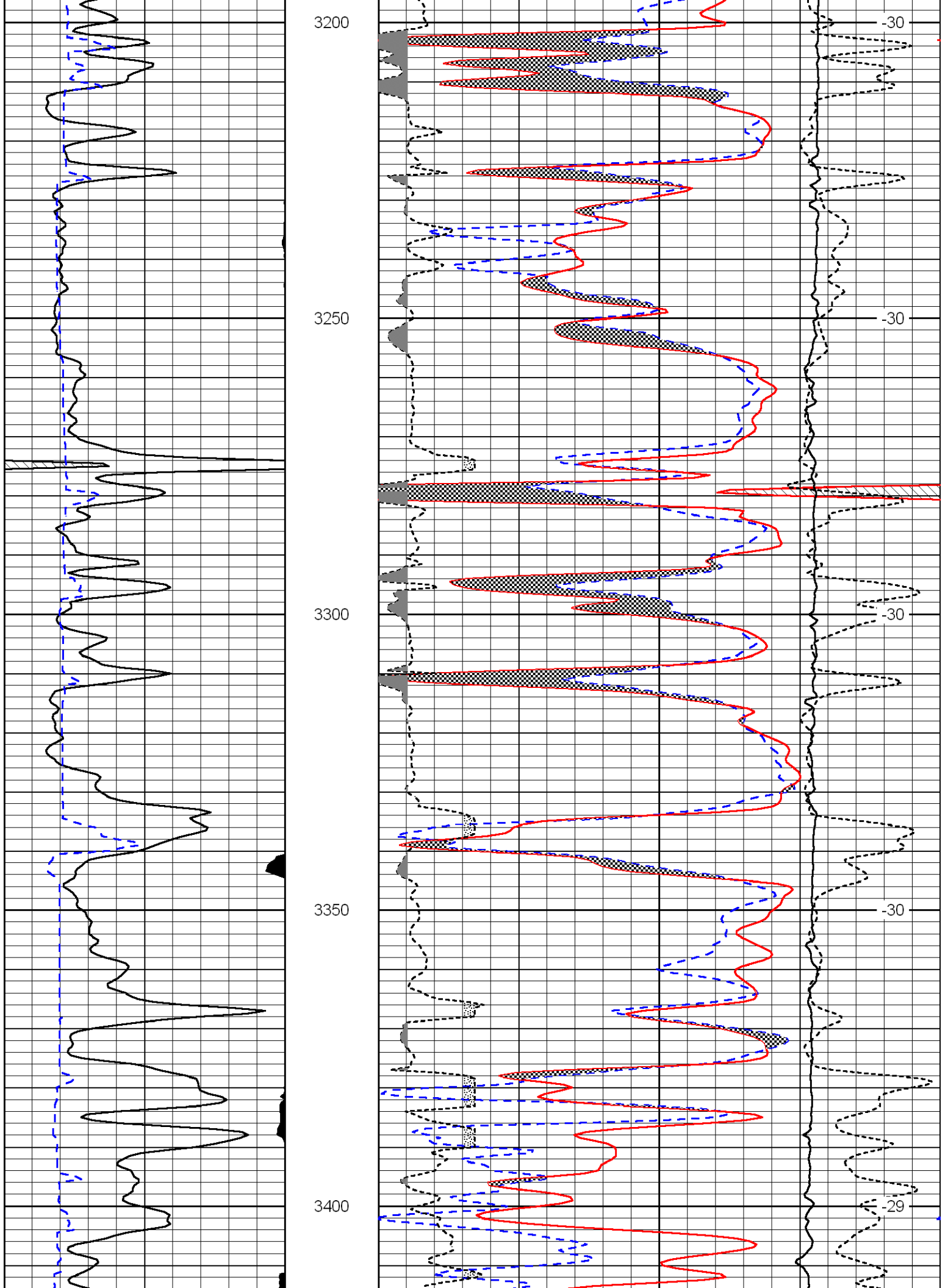


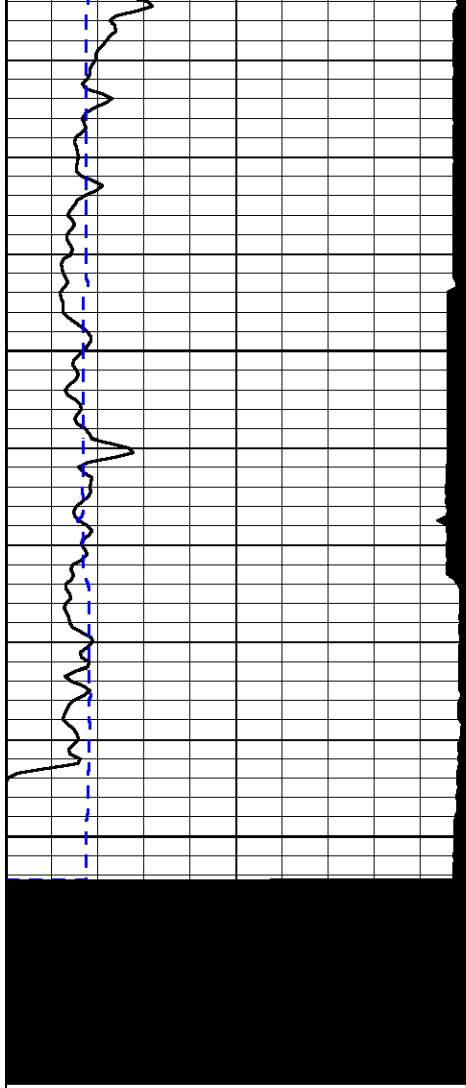
-30

-30

-30

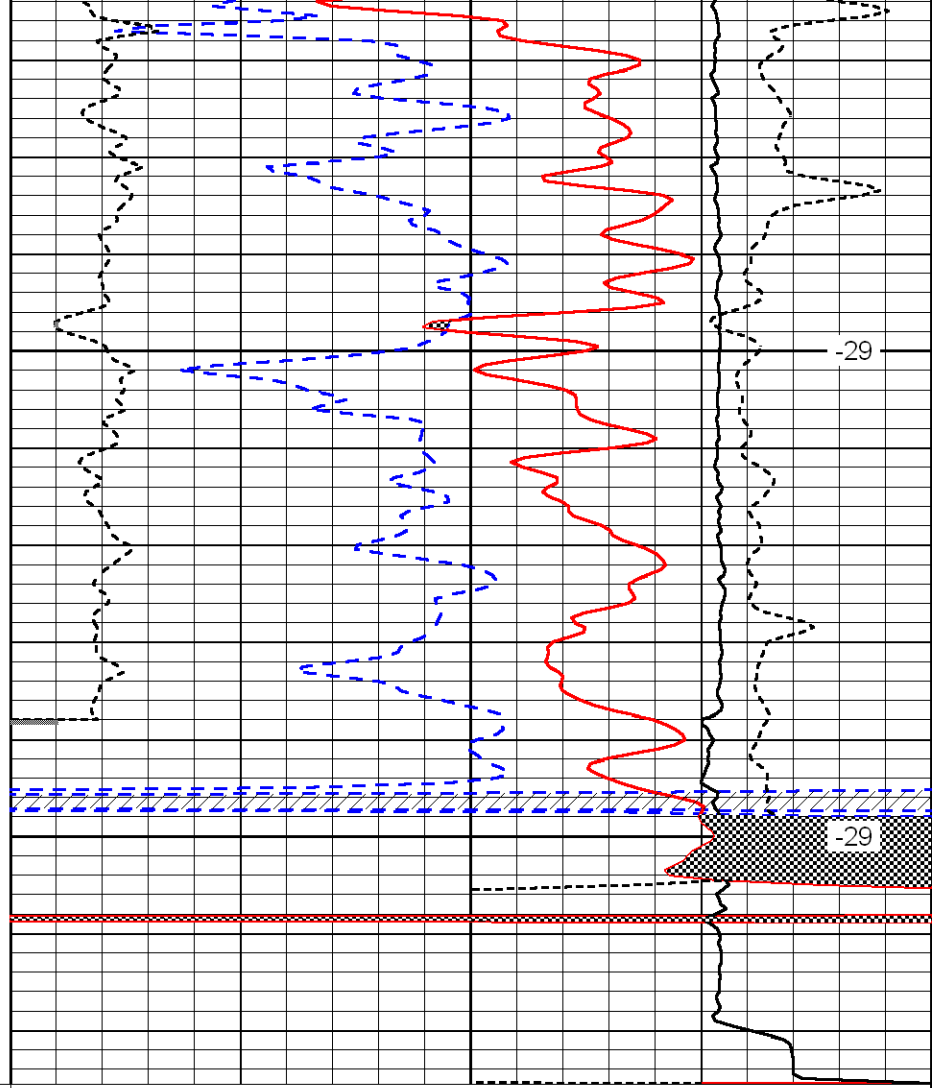
-30





3450

3500



-29

-29

0	Gamma Ray	150
6	Caliper (GAPI)	16

30	Compensated Neutron (pu)			-10	
30	Compensated Density (2.71 ma) (pu)			-10	
2.625	DGA (g/cc)	3.425	-0.25	Correction (g/cc)	0.25
10000	Line Tension (lb)			0	

LSPD
(ft/min)