



Dual Induction Log

DIGITAL LOG (785) 625-3858

API No.	15-009-25,450-00-00		
Company	L.D. Drilling, Inc.		
Well	Voth No.1-19		
Field	Fort Zarah North		
County	Barton	State	Kansas
Location	1520' FNL & 1020' FEL		
Sec: 19	Twp: 19s	Rge: 12w	Other Services CNL/CDL MEL
Permanent Datum	Ground Level	Elevation 1830	Elevation
Log Measured From	Kelly Bushing	5 Ft. Above Perm. Datum	K.B. 1835
Drilling Measured From	Kelly Bushing		D.F. 1830
			G.L. 1830

Date	7/25/2010	
Run Number	One	
Depth Driller	3520	
Depth Logger	3519	
Bottom Logged Interval	3518	
Top Log Interval	300	
Casing Driller	8.625 @ 338	
Casing Logger	343	
Bit Size	7.875	
Type Fluid in Hole	Chemical	
Salinity, ppm CL	8,000	
Density / Viscosity	9.2	43
pH / Fluid Loss	9.5	11.2
Source of Sample	Flowline	
Rm @ Meas. Temp	.55	@ 82
Rmf @ Meas. Temp	.41	@ 82
Rmc @ Meas. Temp	.74	@ 82
Source of Rmf / Rmc	Charts	
Rm @ BHT	.4	@ 113
Operating Rig Time	3 1/2 Hours	
Max Rec. Temp. F	113	
Equipment Number	17	
Location	Hays	
Recorded By	C. Desaire	
Witnessed By	Kim Shoemaker	

<<< Fold Here >>>

All interpretations are opinions based on inferences from electrical or other measurements and we cannot and do not guarantee the accuracy or correctness of any interpretation, and we shall not, except in the case of gross or willful negligence on our part, be liable or responsible for any loss, costs, damages, or expenses incurred or sustained by anyone resulting from any interpretation made by any of our officers, agents or employees. These interpretations are also subject to our general terms and conditions set out in our current Price Schedule.

Comments

Thank you for using Log-Tech, Inc.
 (785) 625-3858

Great Bend, E to Doonans,
 2 N, 1/2 W, S Into

Database File: ldhd.db
 Dataset Pathname: dil/ldstk
 Presentation Format: dil2in
 Dataset Creation: Sun Jul 25 21:47:28 2010
 Charted by: Depth in Feet scaled 1:600

0 Gamma Ray 150
-200 SP (mV) 0

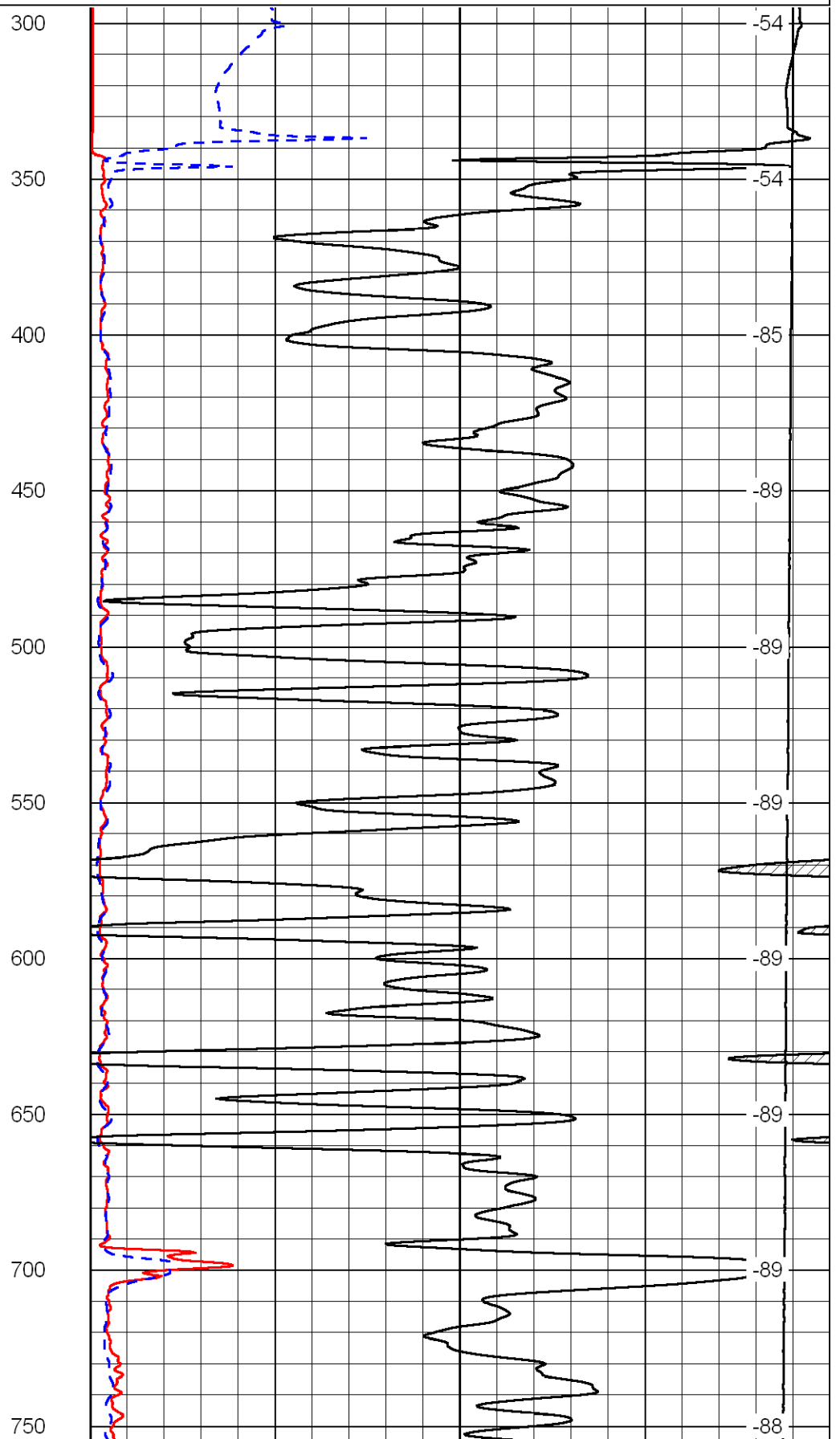
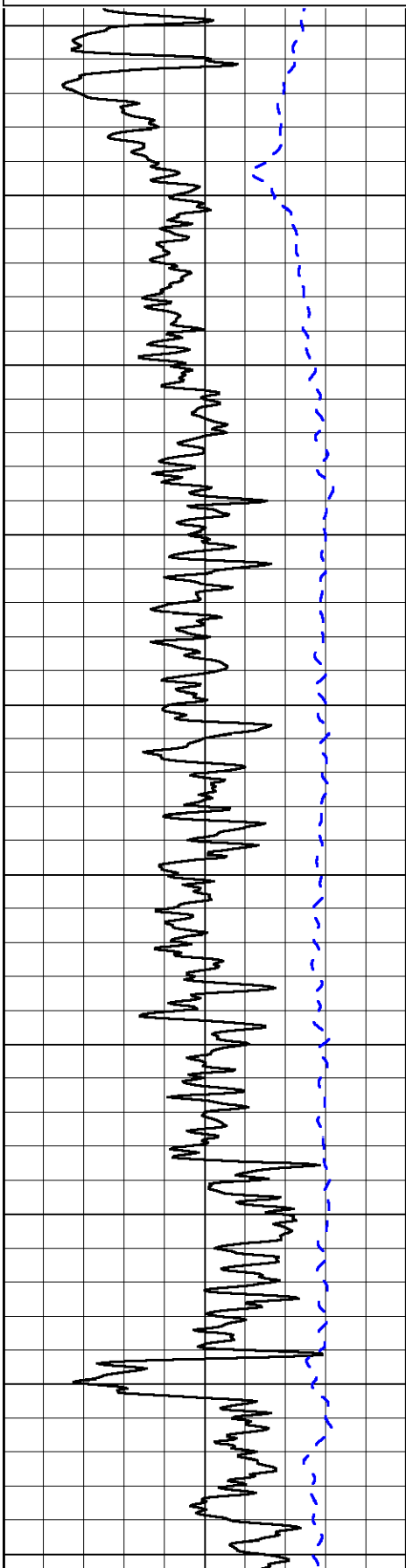
0 Shallow Resistivity (Ohm-m) 50
0 Deep Resistivity (Ohm-m) 50

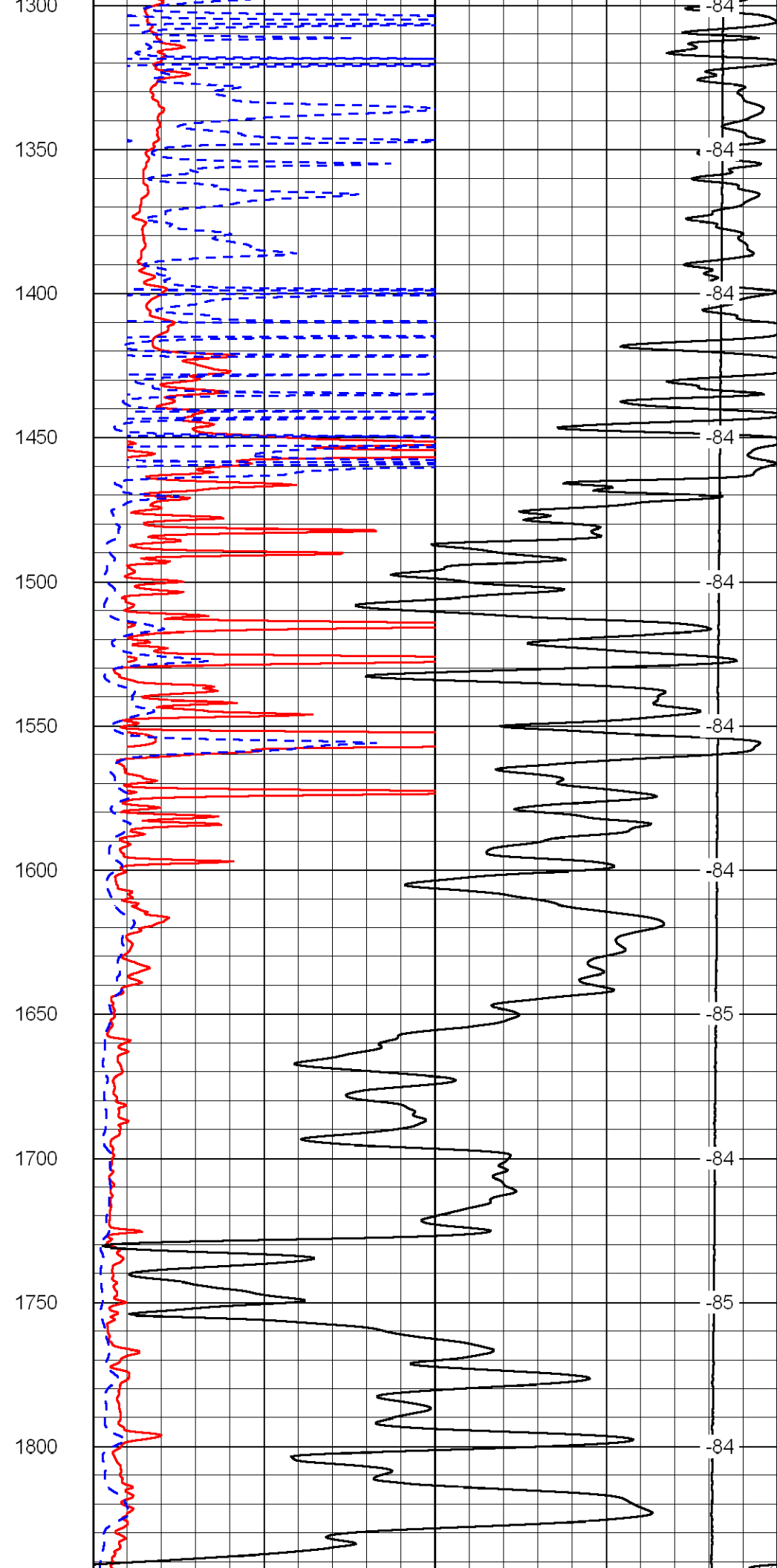
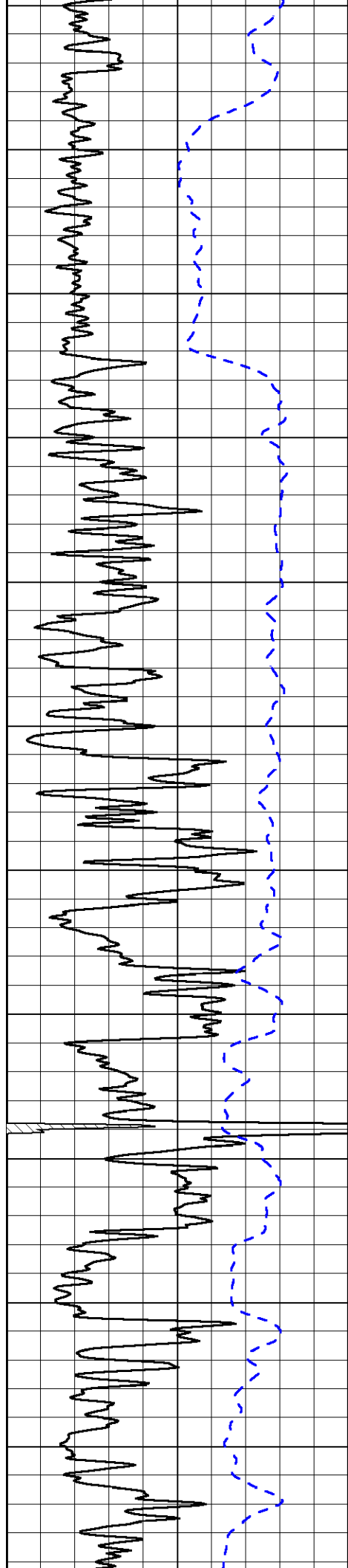
LSPD
(ft/min)

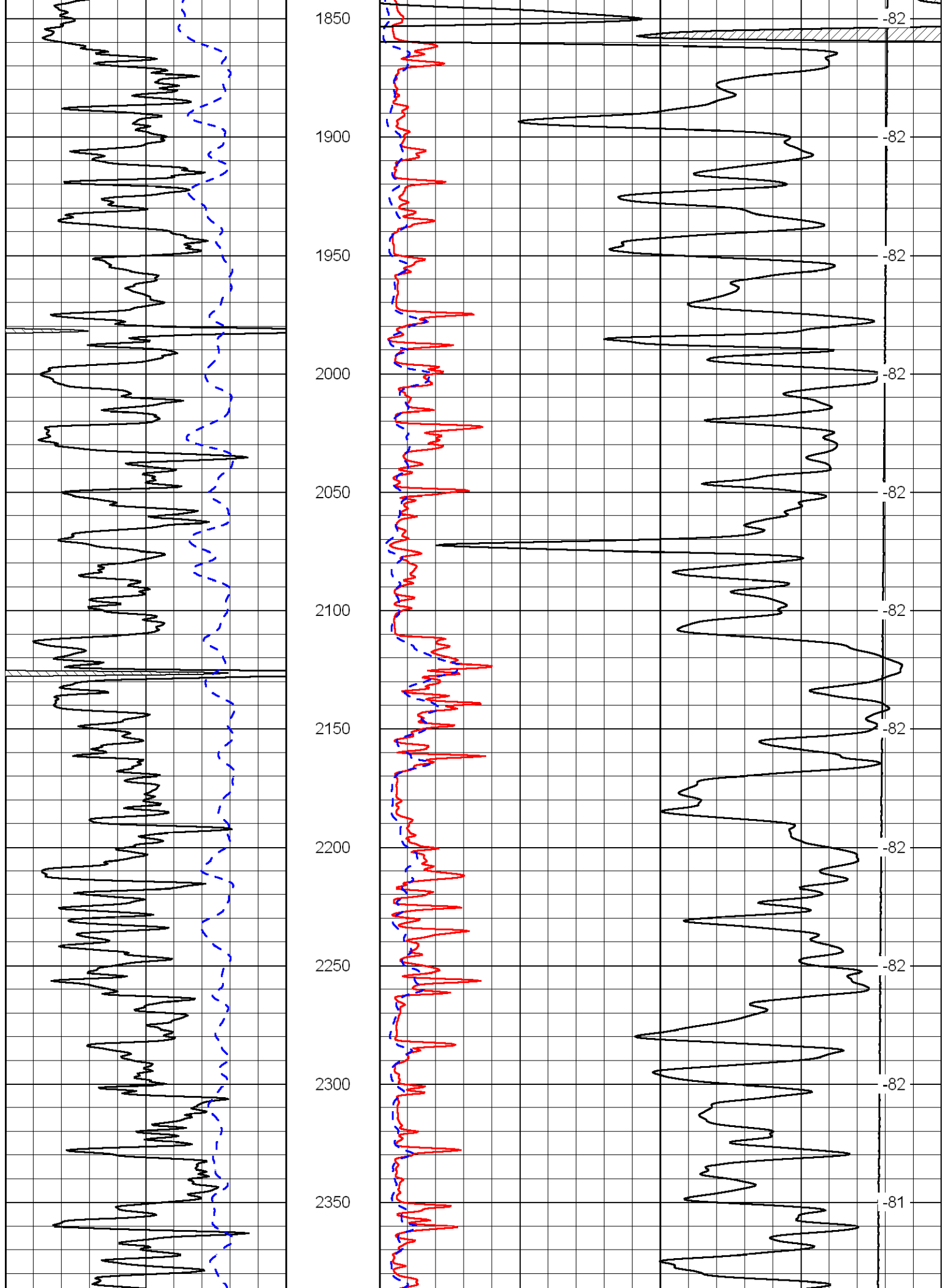
1000 Conductivity (mmho/m) 0

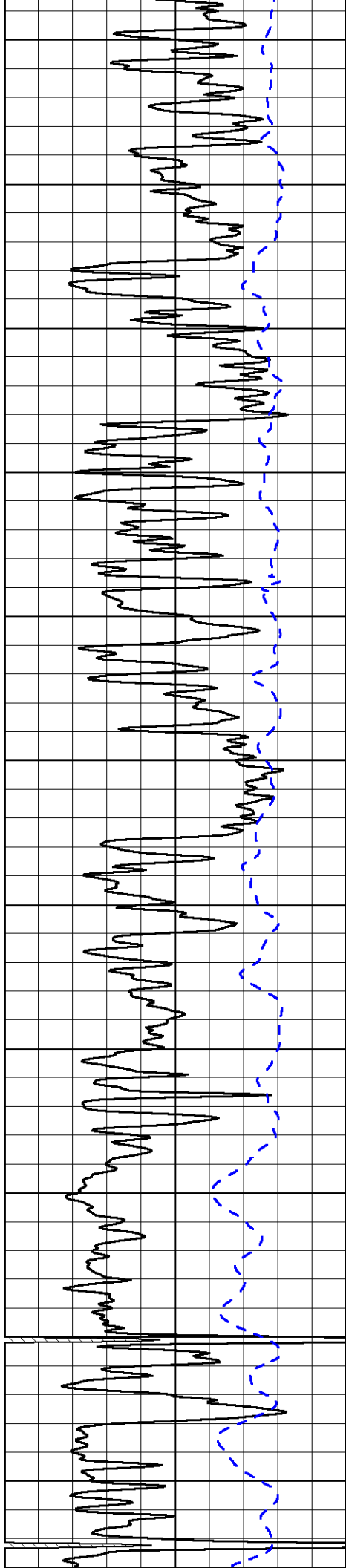
15000 Line Tension (lb) 0

Shallow Resistivity
50 (Ohm-m) 500
50 Deep Resistivity (Ohm-m) 500

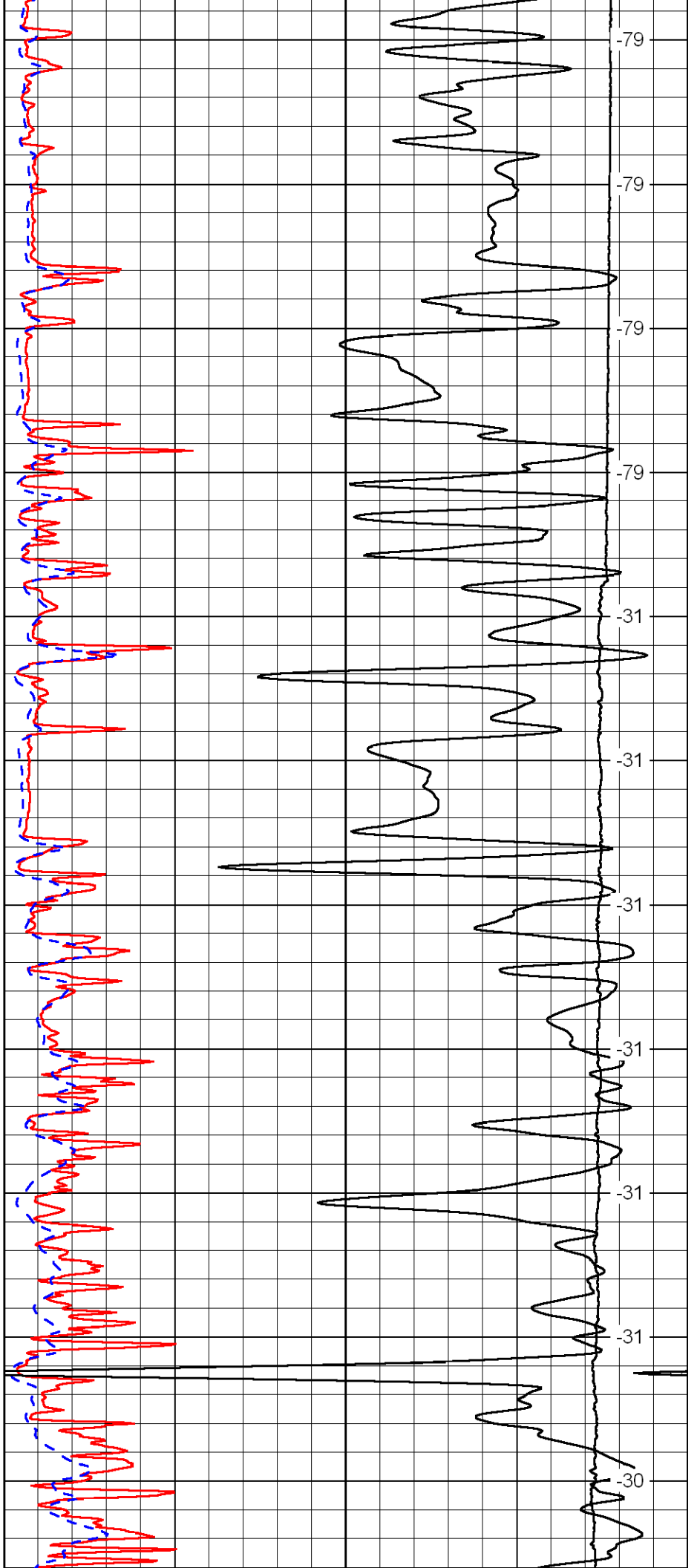




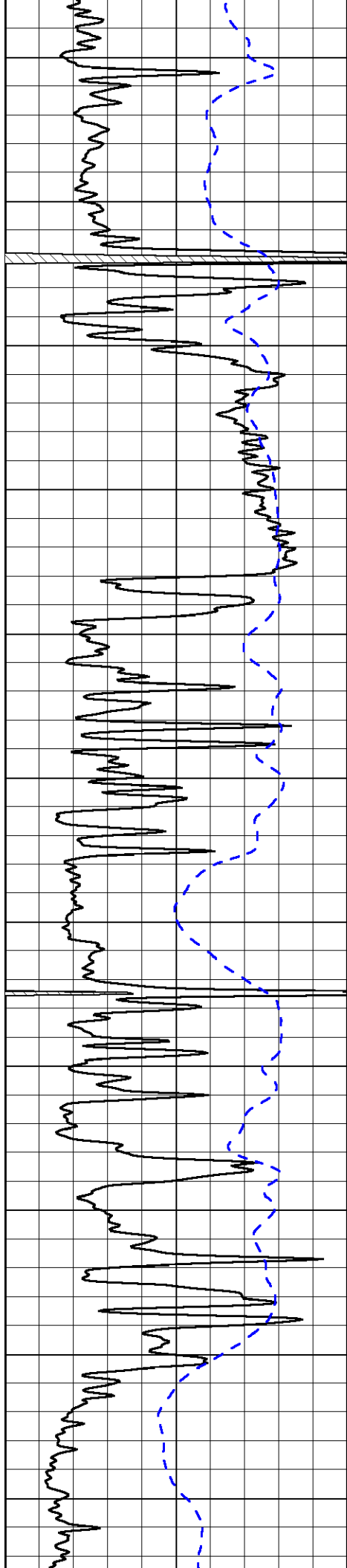




2400
2450
2500
2550
2600
2650
2700
2750
2800
2850
2900



-79
-79
-79
-79
-31
-31
-31
-31
-31
-31
-31
-30



2950

3000

3050

3100

3150

3200

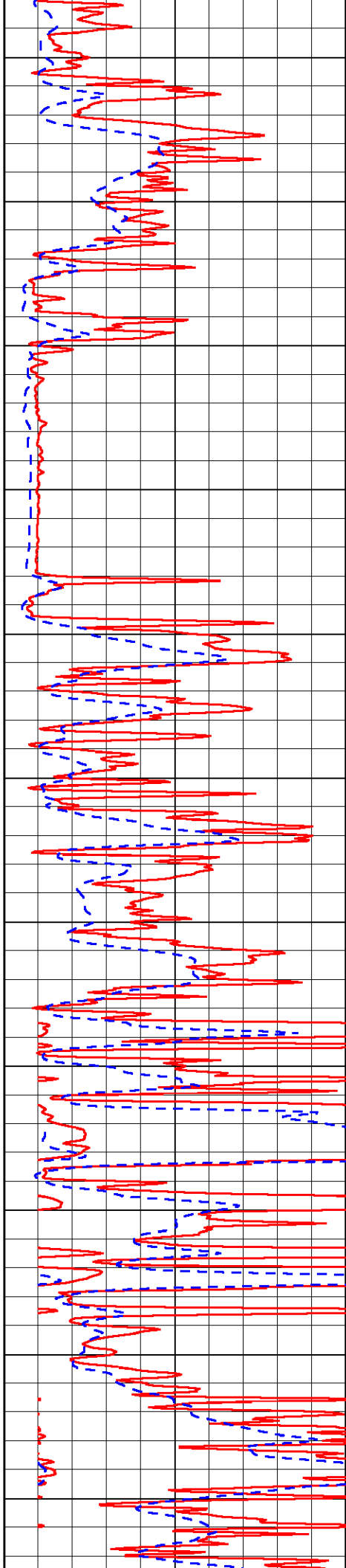
3250

3300

3350

3400

3450



-30

-30

-30

-30

-30

-30

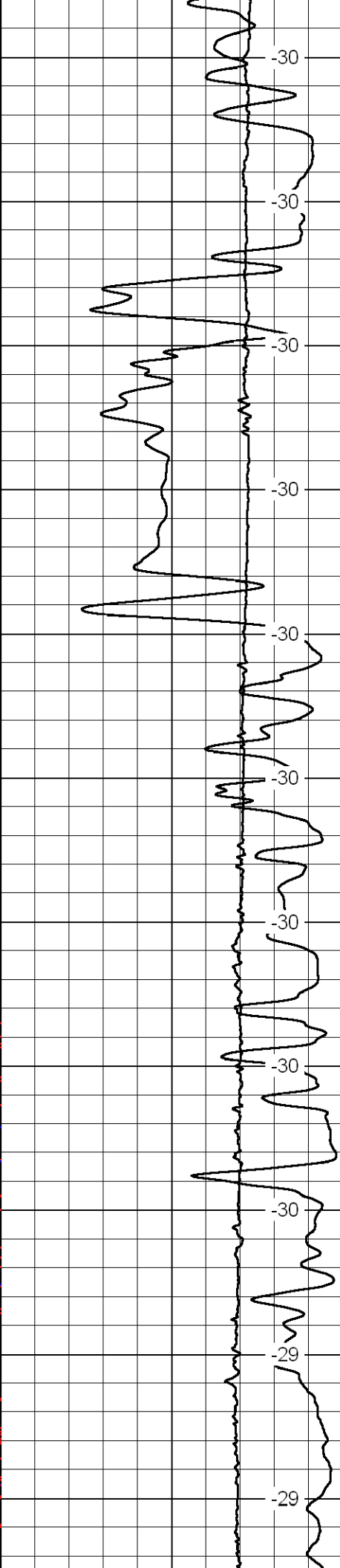
-30

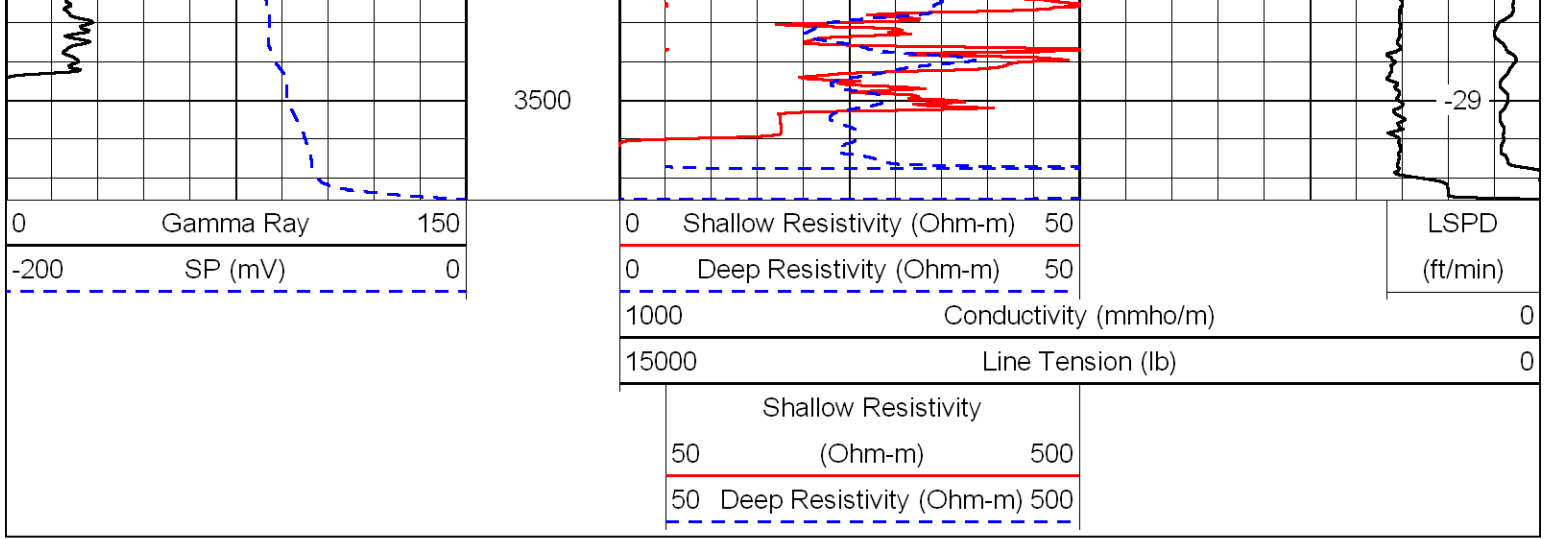
-30

-30

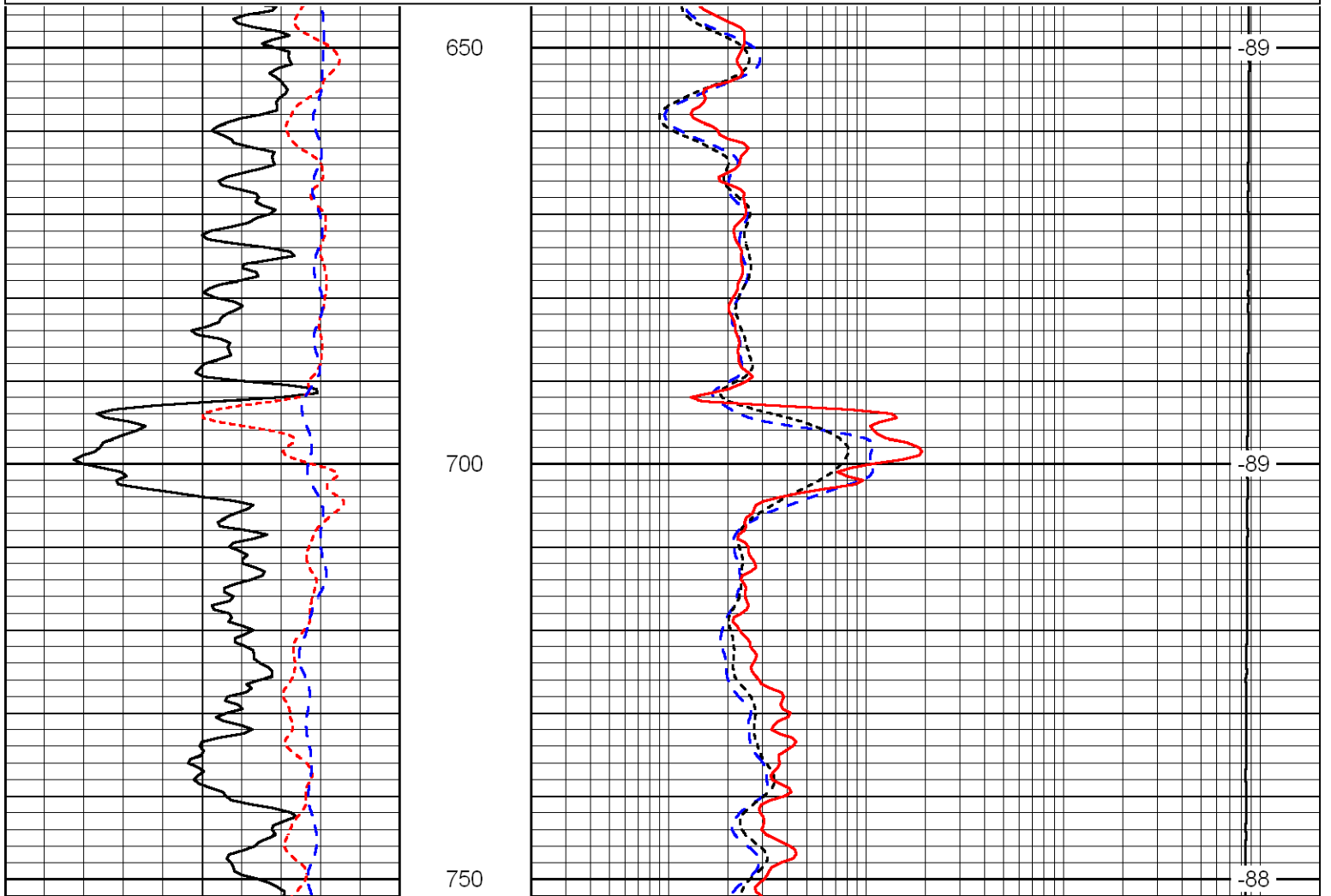
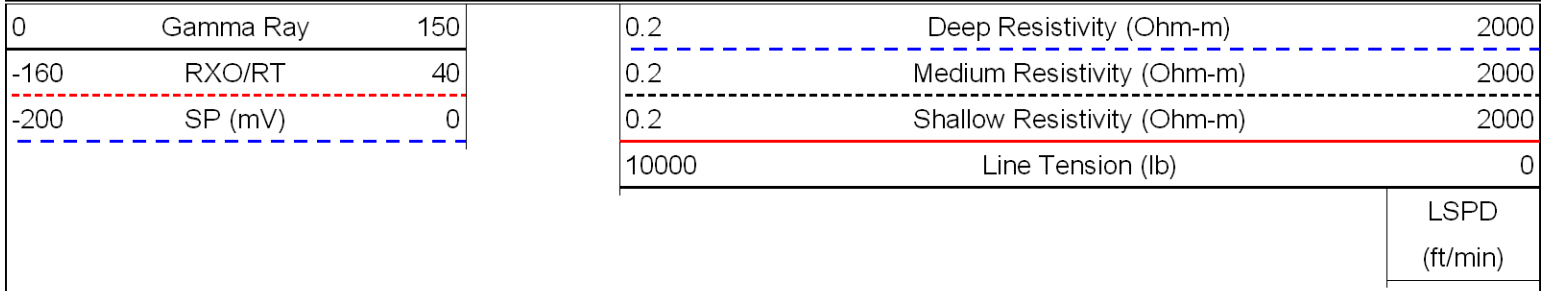
-29

-29





Database File: Idhd.db
 Dataset Pathname: dil/ldstk
 Presentation Format: dil
 Dataset Creation: Sun Jul 25 21:47:28 2010
 Charted by: Depth in Feet scaled 1:240



0	Gamma Ray	150
-160	RXO/RT	40
-200	SP (mV)	0

0.2	Deep Resistivity (Ohm-m)	2000
0.2	Medium Resistivity (Ohm-m)	2000
0.2	Shallow Resistivity (Ohm-m)	2000
10000	Line Tension (lb)	0

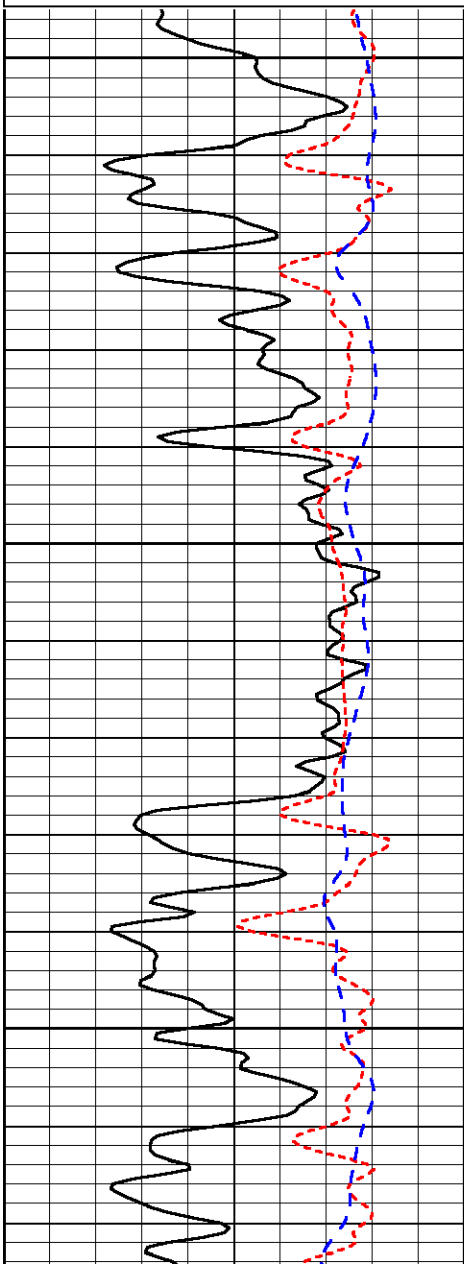
LSPD
(ft/min)

Database File: ldhd.db
 Dataset Pathname: dil/ldstk
 Presentation Format: dil
 Dataset Creation: Sun Jul 25 21:47:28 2010
 Charted by: Depth in Feet scaled 1:240

0	Gamma Ray	150
-160	RXO/RT	40
-200	SP (mV)	0

0.2	Deep Resistivity (Ohm-m)	2000
0.2	Medium Resistivity (Ohm-m)	2000
0.2	Shallow Resistivity (Ohm-m)	2000
10000	Line Tension (lb)	0

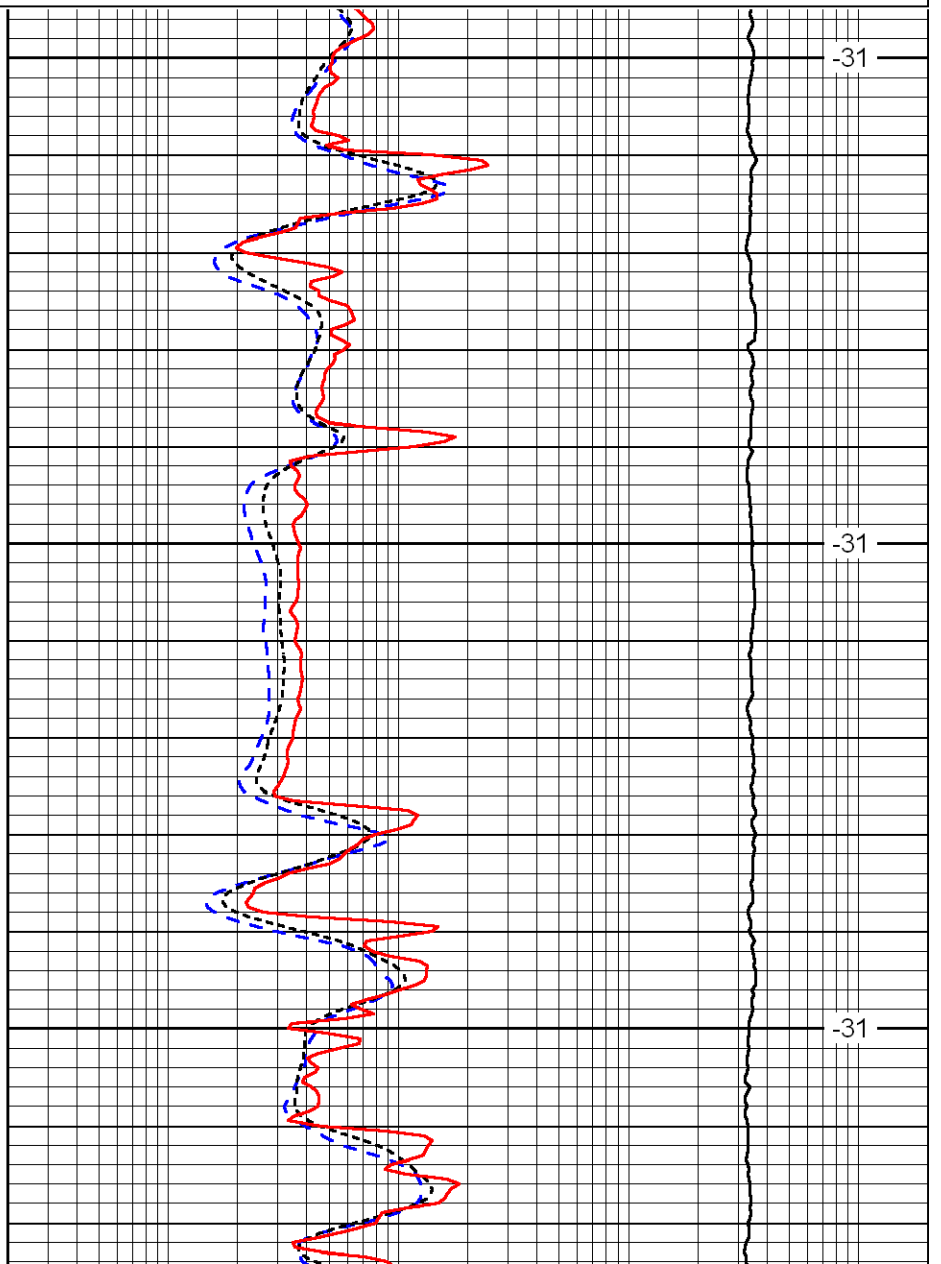
LSPD
(ft/min)



2600

2650

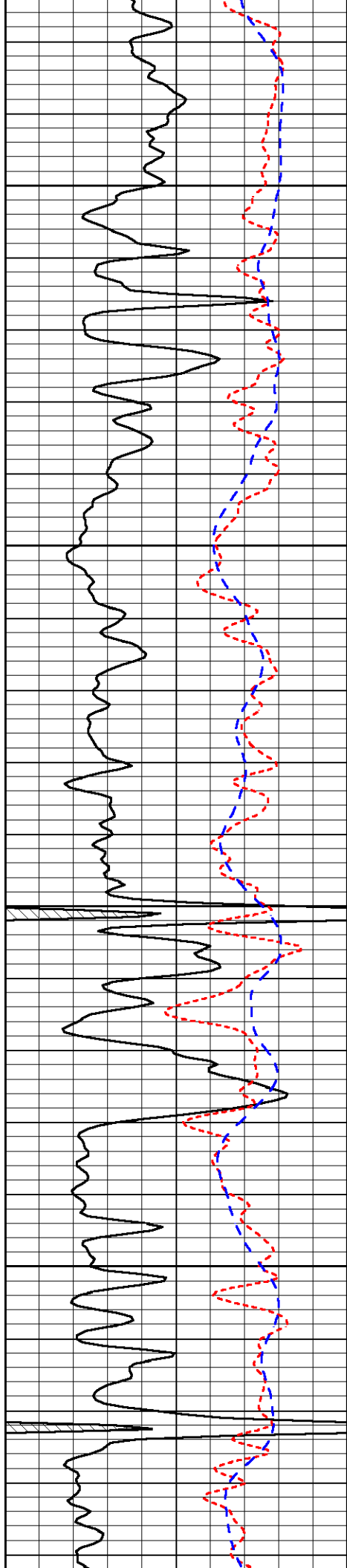
2700



-31

-31

-31

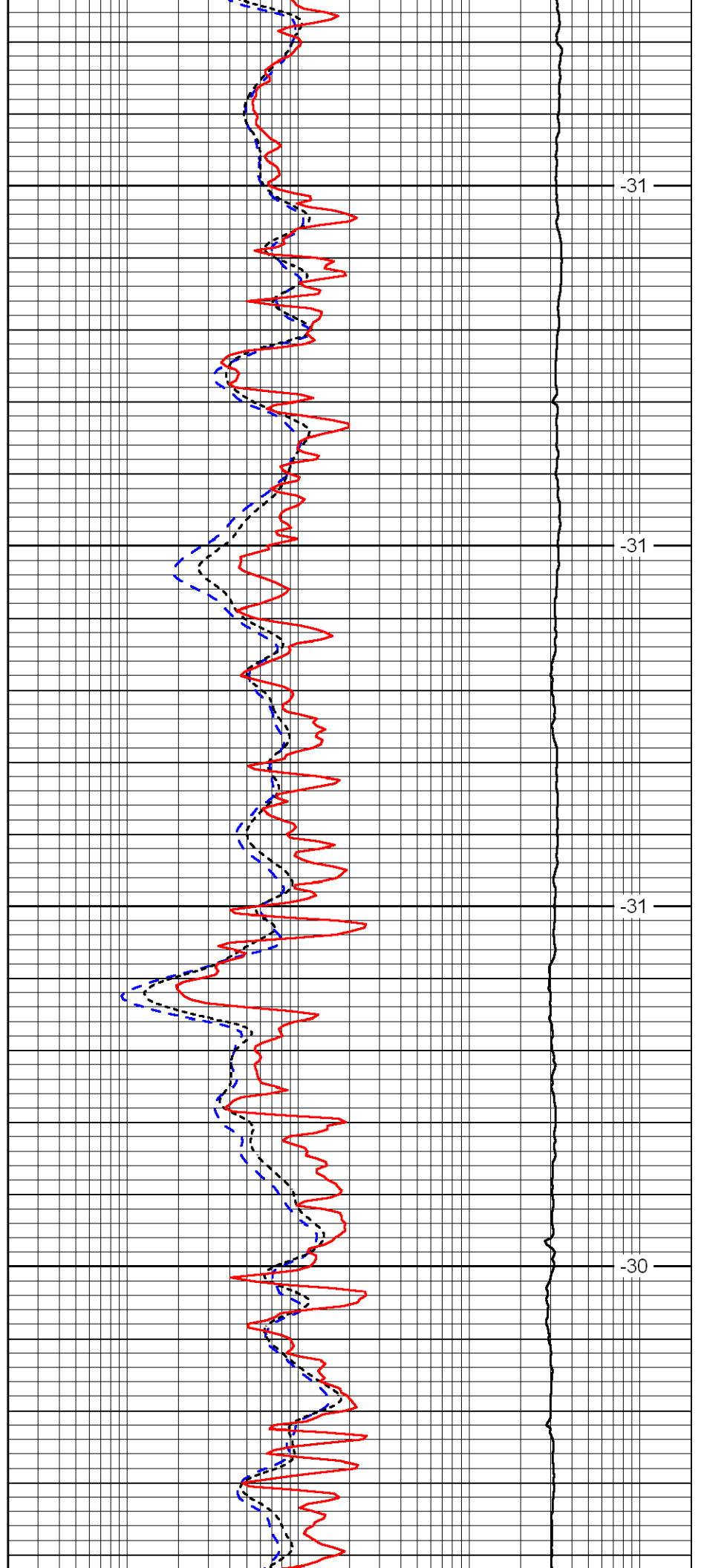


2750

2800

2850

2900

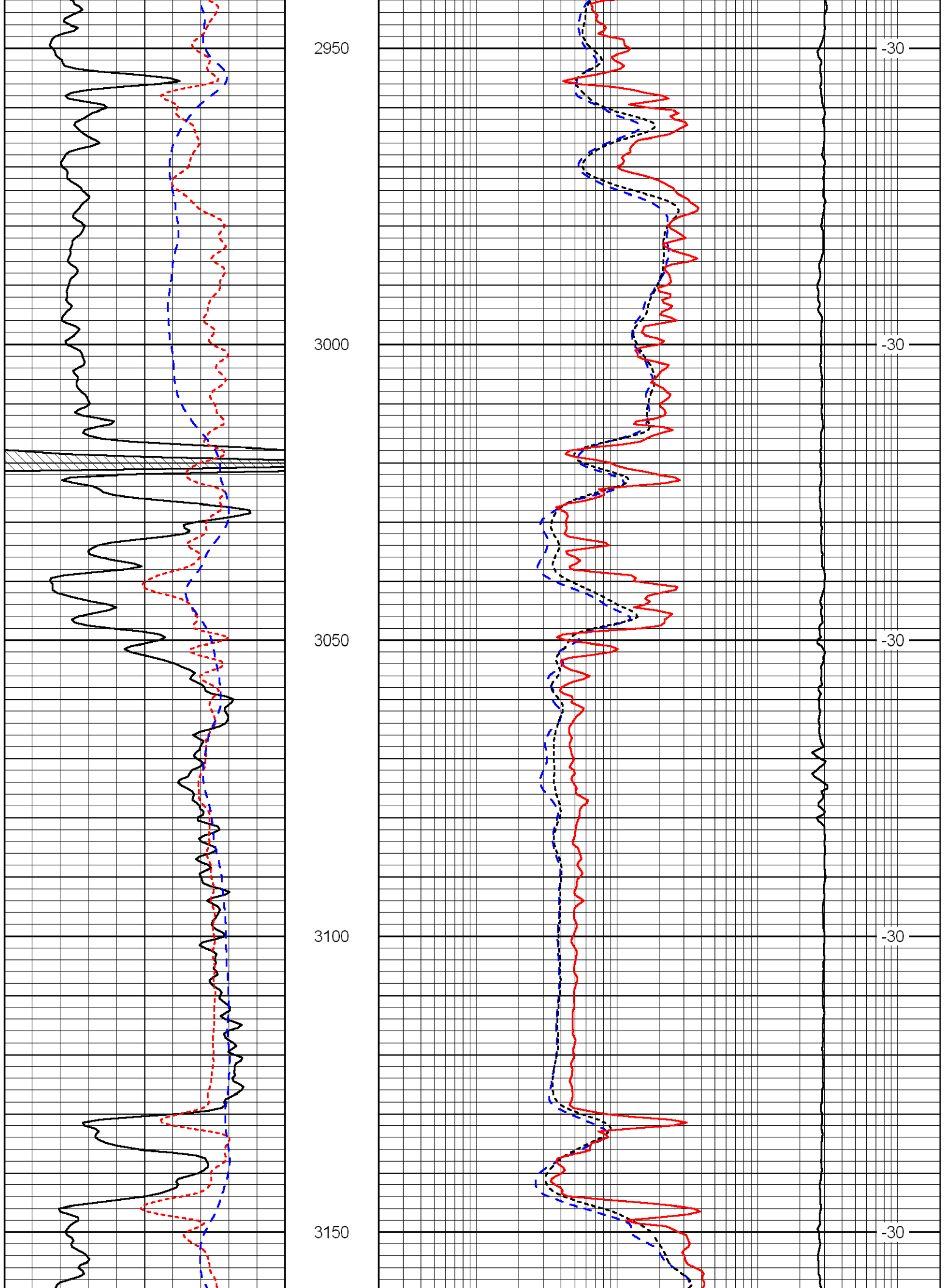


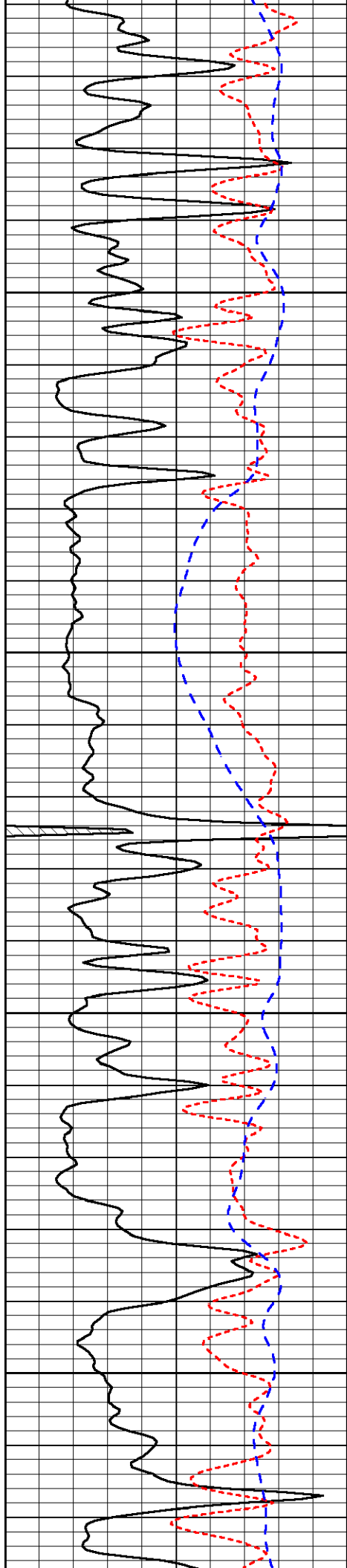
-31

-31

-31

-30



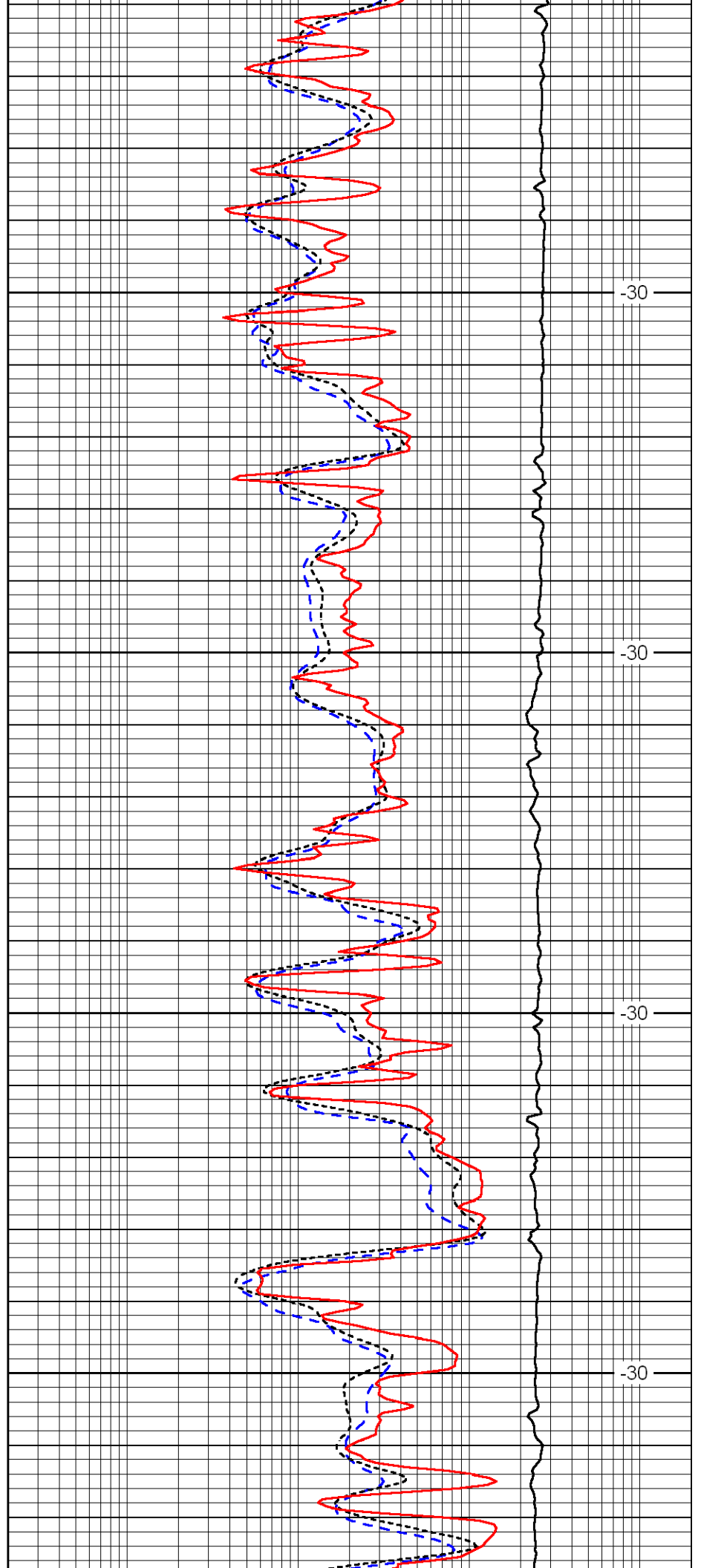


3200

3250

3300

3350

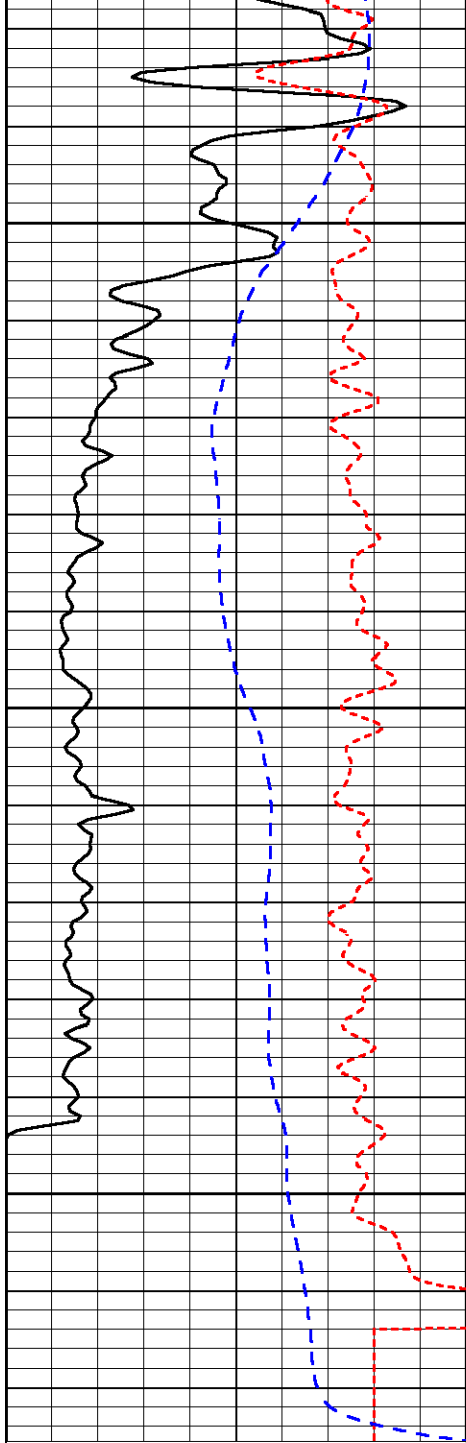


-30

-30

-30

-30

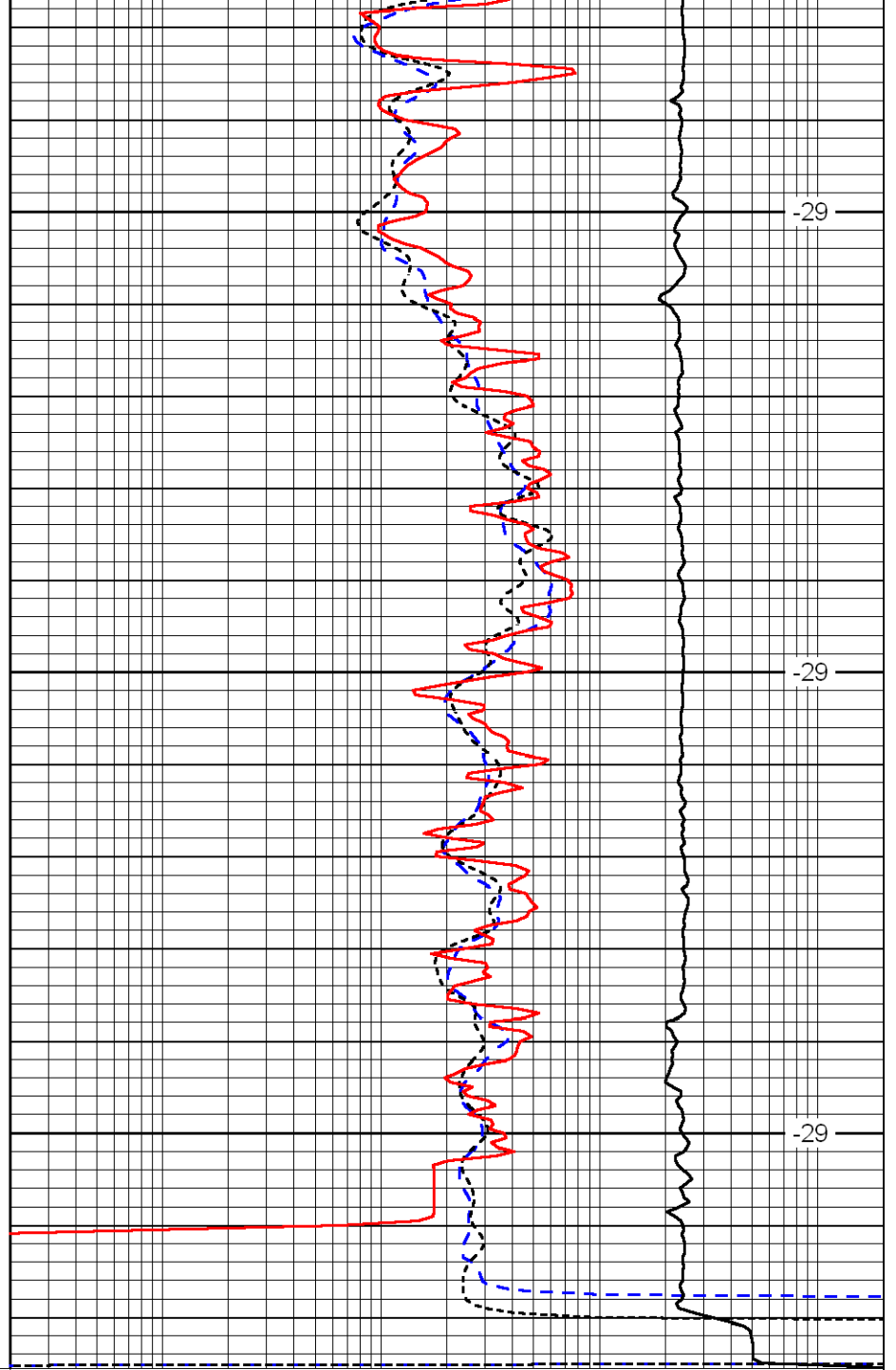


3400

3450

3500

0	Gamma Ray	150
-160	RXO/RT	40
-200	SP (mV)	0



-29

-29

-29

0.2	Deep Resistivity (Ohm-m)	2000
0.2	Medium Resistivity (Ohm-m)	2000
0.2	Shallow Resistivity (Ohm-m)	2000
10000	Line Tension (lb)	0

LSPD
(ft/min)