



Microresistivity Log

DIGITAL LOG (785) 625-3858

API No.	15-063-21,841-00-00		
Company	L.D. Drilling, Inc.		
Well	Darrel No. 1-31		
Field	Lundgren		
County	Gove	State	Kansas
Location	1,850' FSL & 330' FWL		
Sec:	31	Twp:	14S Rge: 29W
Other Services CNL/CDL DIL/RAG	Elevation K.B. 2700 D.F. 2695 G.L. 2695		

Date	7/14/2010	
Run Number	Two	
Depth Driller	4465	
Depth Logger	4464	
Bottom Logged Interval	4463	
Top Log Interval	3200	
Casing Driller	8.625 @ 267	
Casing Logger	262	
Bit Size	7.875	
Type Fluid in Hole	Chemical	
Salinity, ppm CL	3300	
Density / Viscosity	9.2	48
pH / Fluid Loss	9.2	8.9
Source of Sample	Flowline	
Rm @ Meas. Temp	.80	@ 84
Rmf @ Meas. Temp	.60	@ 84
Rmc @ Meas. Temp	1.08	@ 84
Source of Rmf / Rmc	Charts	
Rm @ BHT	.56	@ 121
Operating Rig Time	4 Hours	
Max Rec. Temp. F	121	
Equipment Number	10	
Location	Hays	
Recorded By	J. Long	
Witnessed By	Tom Funk	

<<< Fold Here >>>

All interpretations are opinions based on inferences from electrical or other measurements and we cannot and do not guarantee the accuracy or correctness of any interpretation, and we shall not, except in the case of gross or willful negligence on our part, be liable or responsible for any loss, costs, damages, or expenses incurred or sustained by anyone resulting from any interpretation made by any of our officers, agents or employees. These interpretations are also subject to our general terms and conditions set out in our current Price Schedule.

Comments

Thank you for using Log-Tech, Inc.
(785) 625-3858

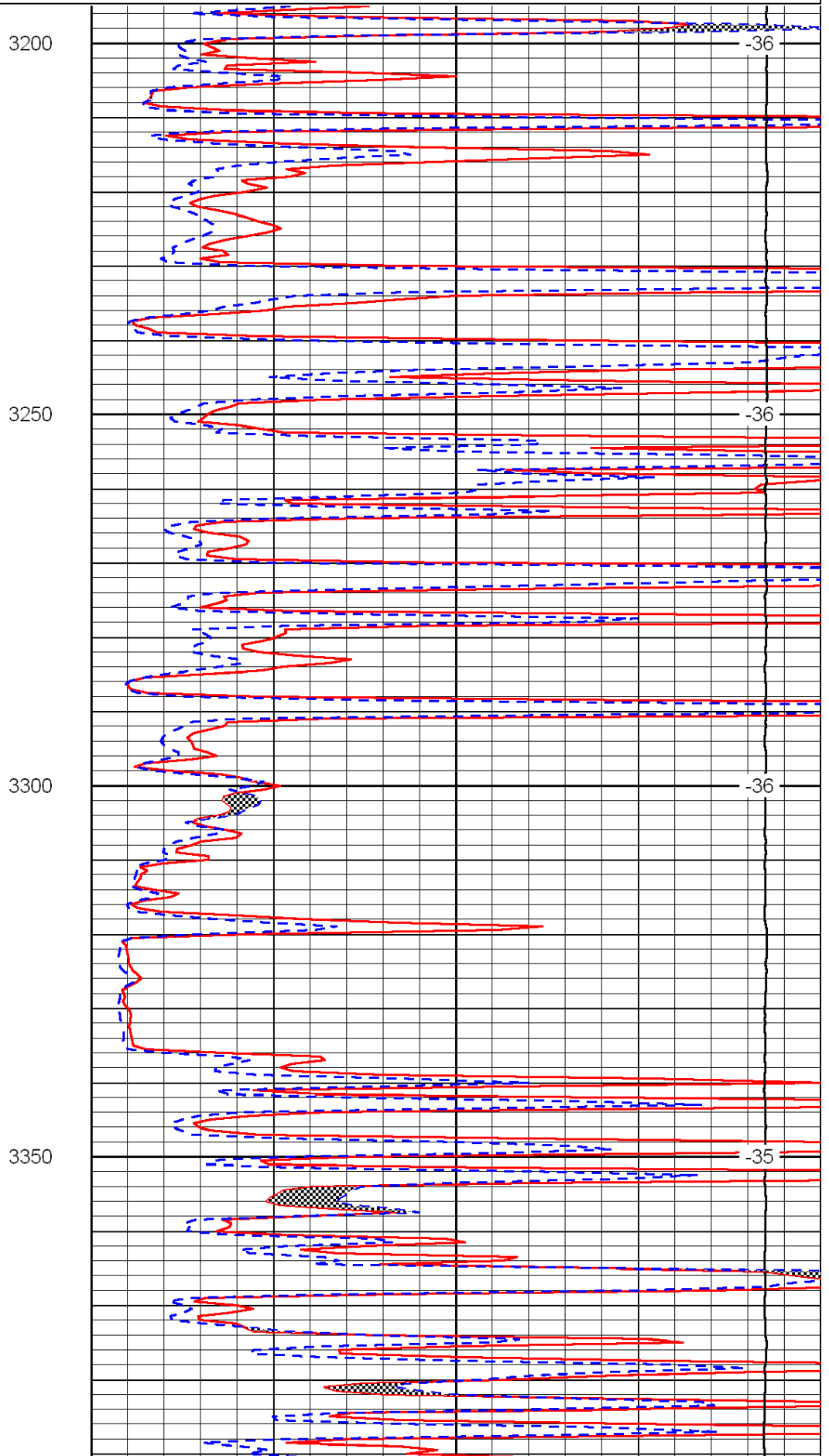
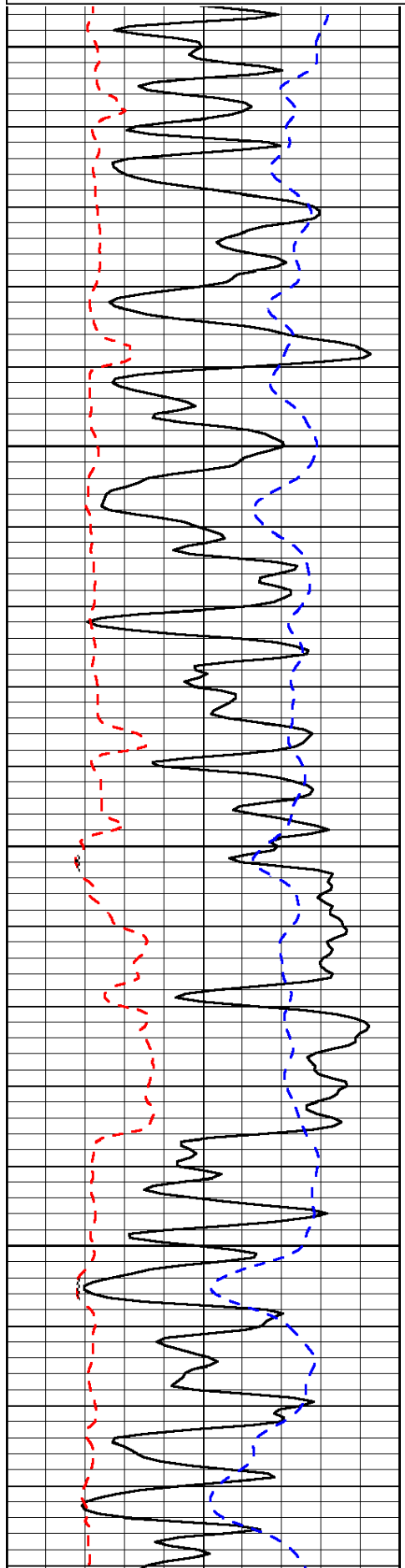
Gove, West to Rd 26, 6 South to Rd M, 3 East to Rd 32, 4 South to Rd I, 1 East to Rd 34, 1 1/2 South, South Into

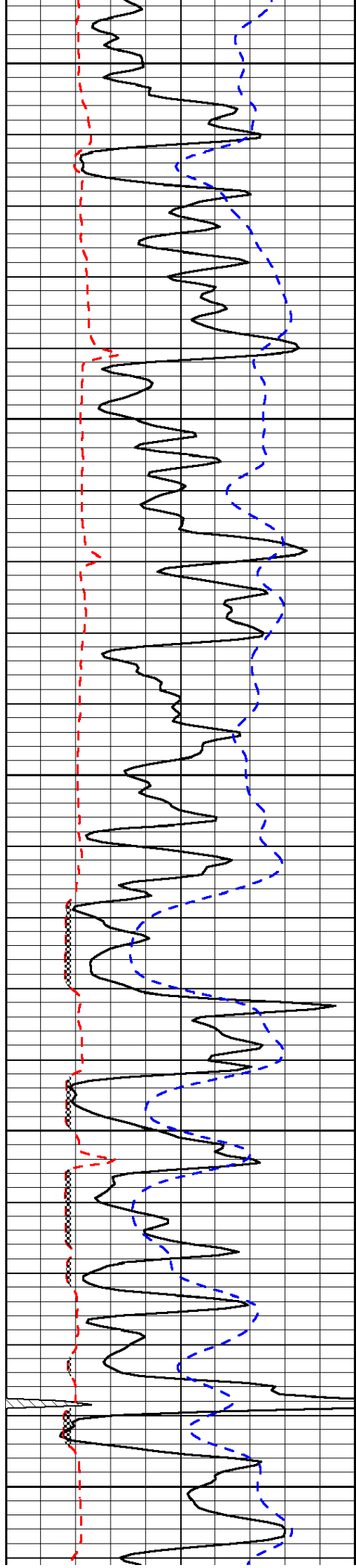
Database File: c:\warrior\data\ld drilling_darrel no. 1-31\lddrilling.db
 Dataset Pathname: dil\dstck
 Presentation Format: micro
 Dataset Creation: Wed Jul 14 23:29:34 2010
 Charted by: Depth in Feet scaled 1:240

0	Gamma Ray	150
6	Micro Log Caliper (GAPI)	16
-200	SP (mV)	0

0	Micro Inverse 1 X 1	40
0	Micro Normal 2"	40
15000	Line Weight	0

LSPD





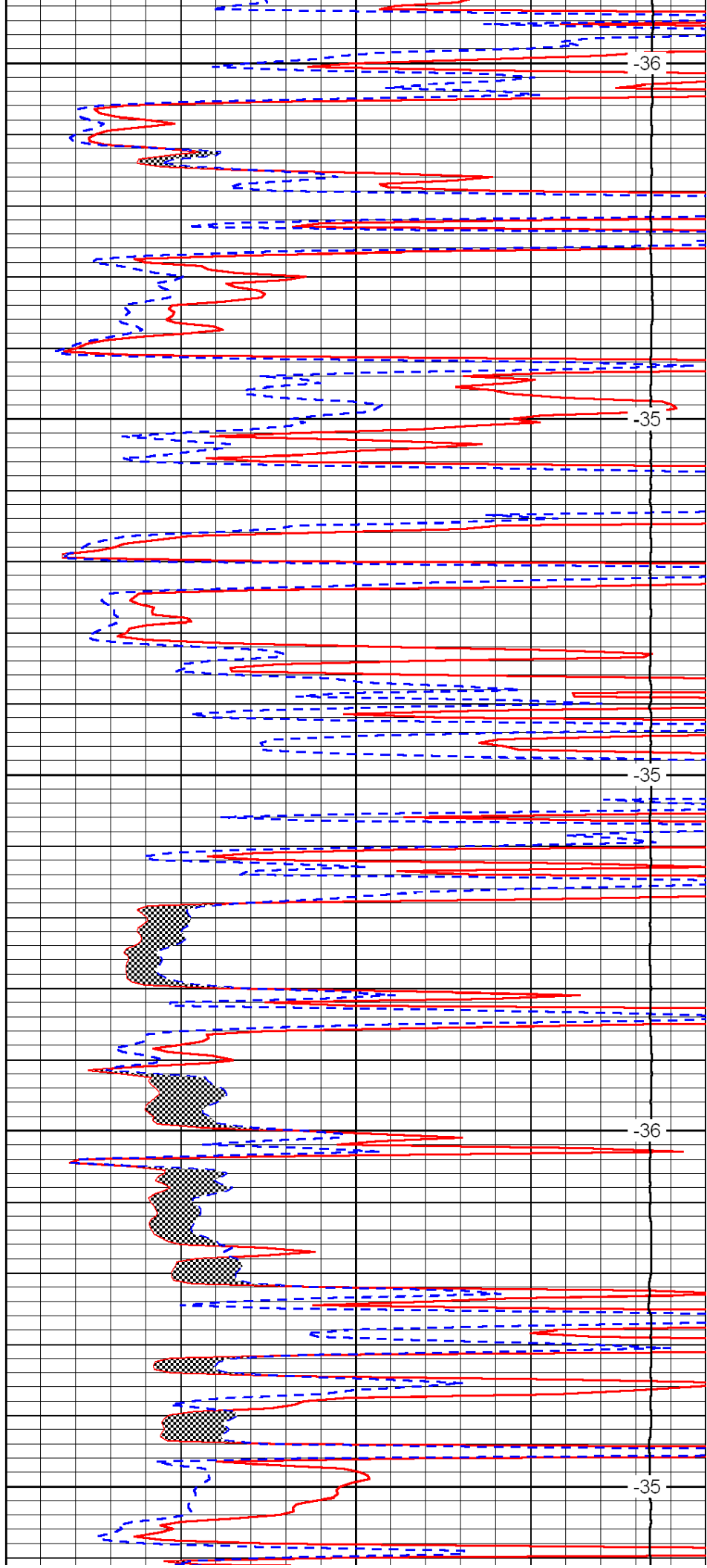
3400

3450

3500

3550

3600



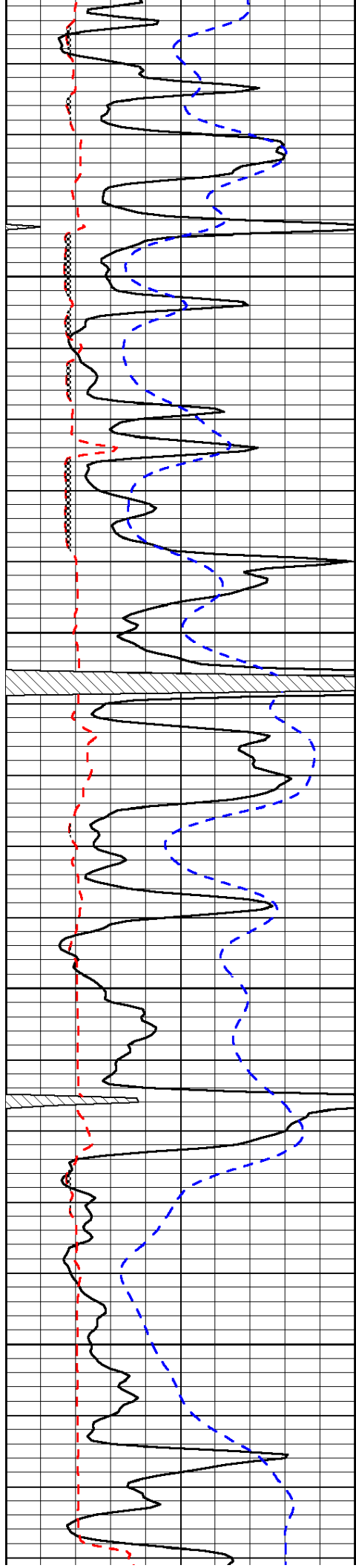
-36

-35

-35

-36

-35

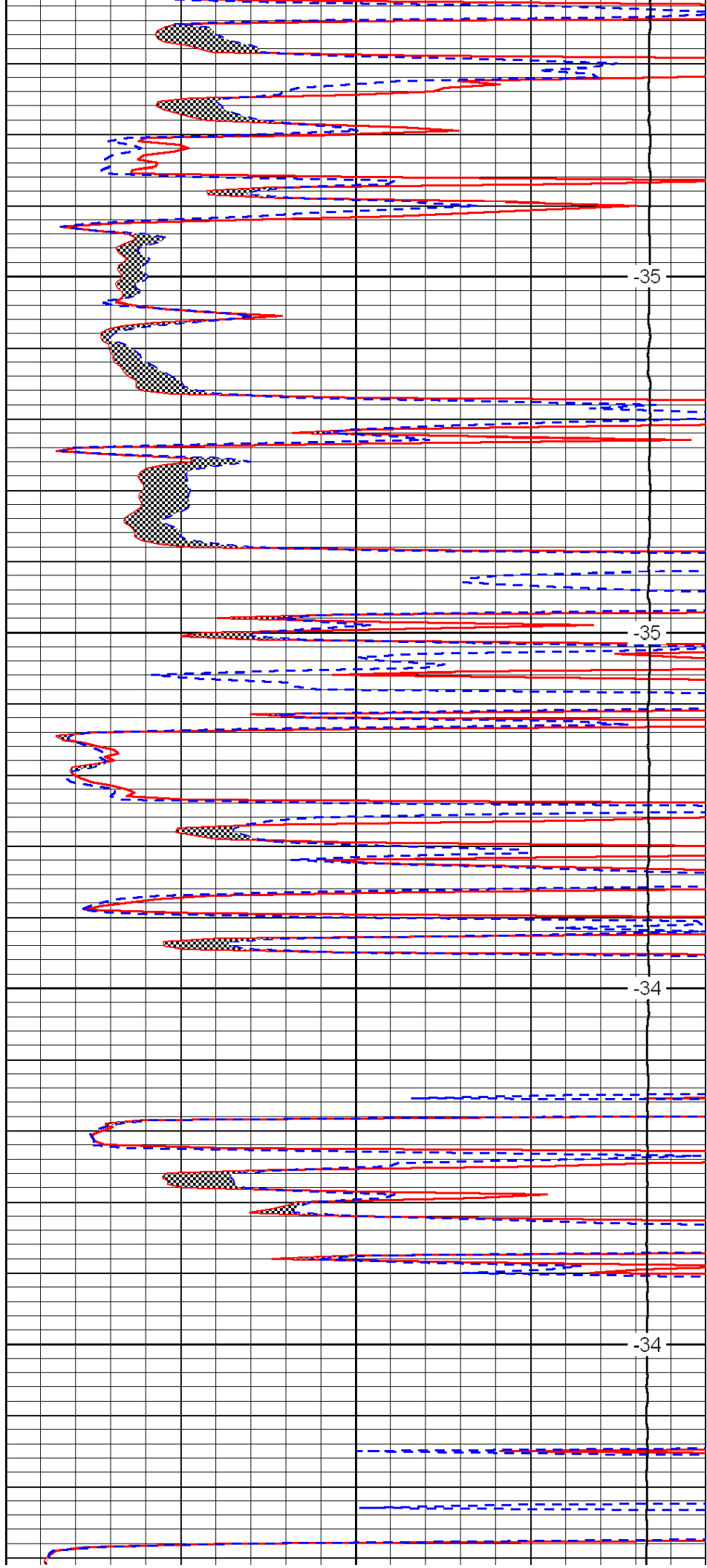


3650

3700

3750

3800

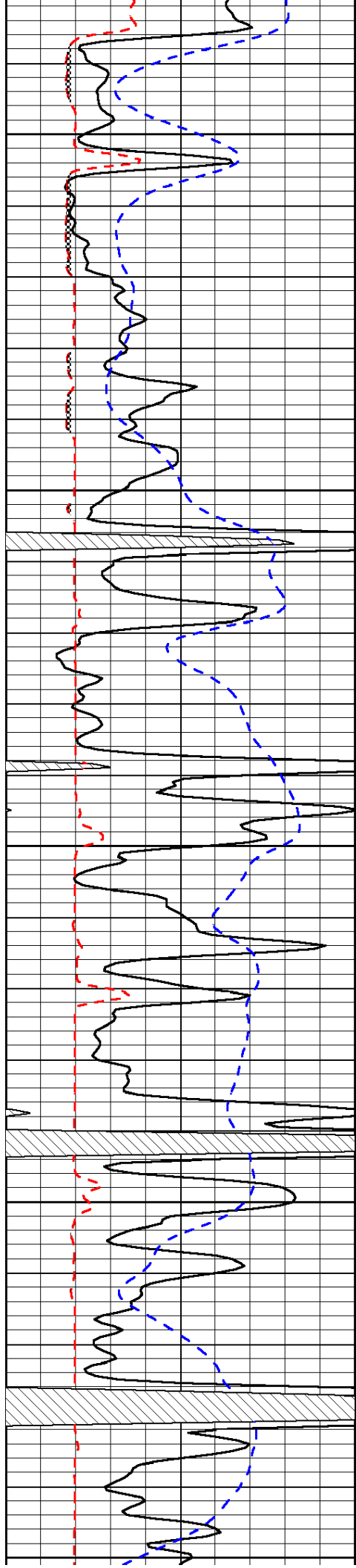


-35

-35

-34

-34



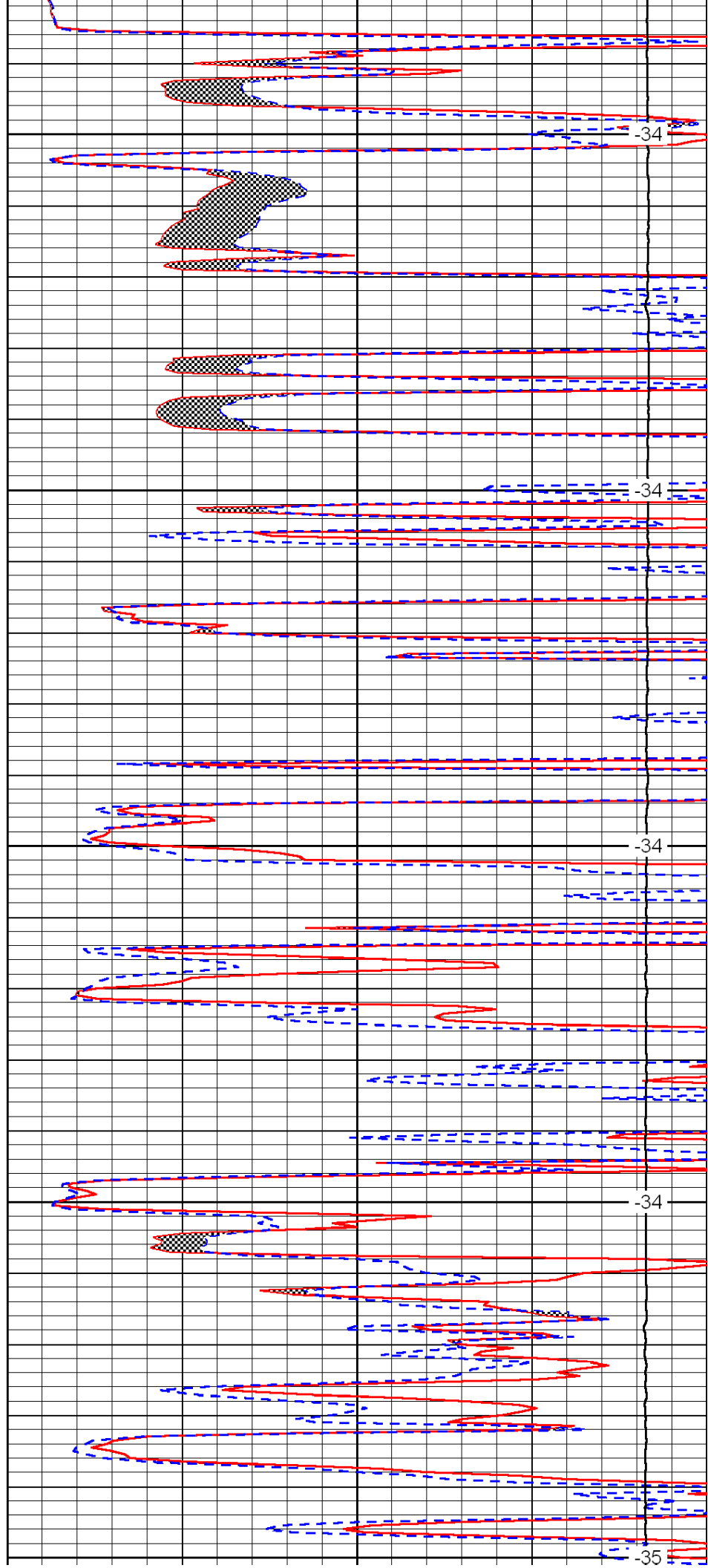
3850

3900

3950

4000

4050



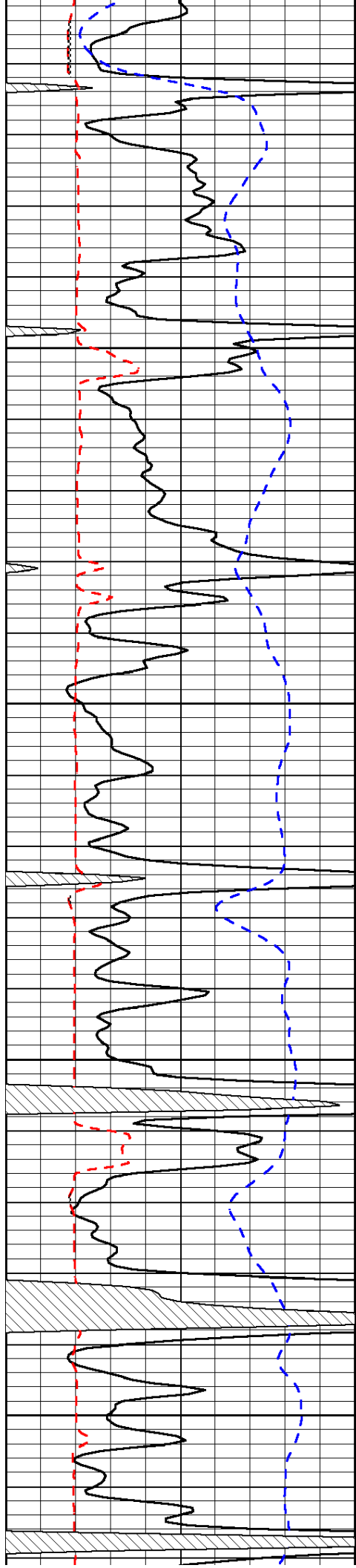
-34

-34

-34

-34

-35

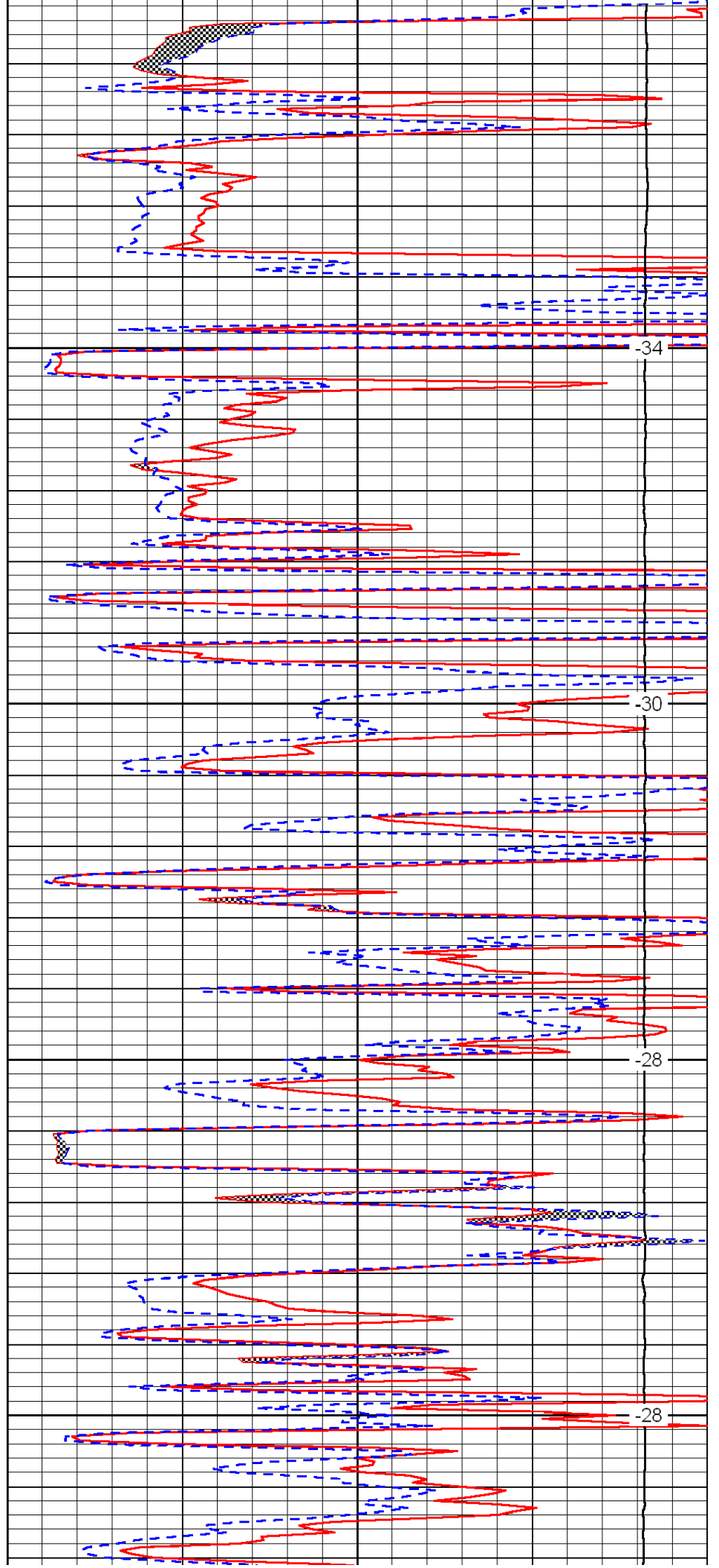


4100

4150

4200

4250

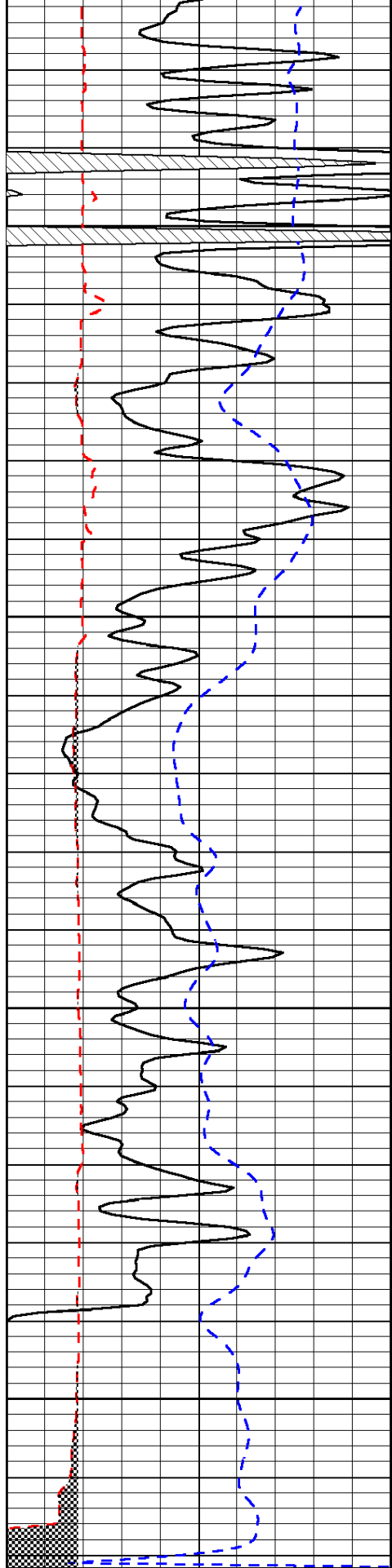


-34

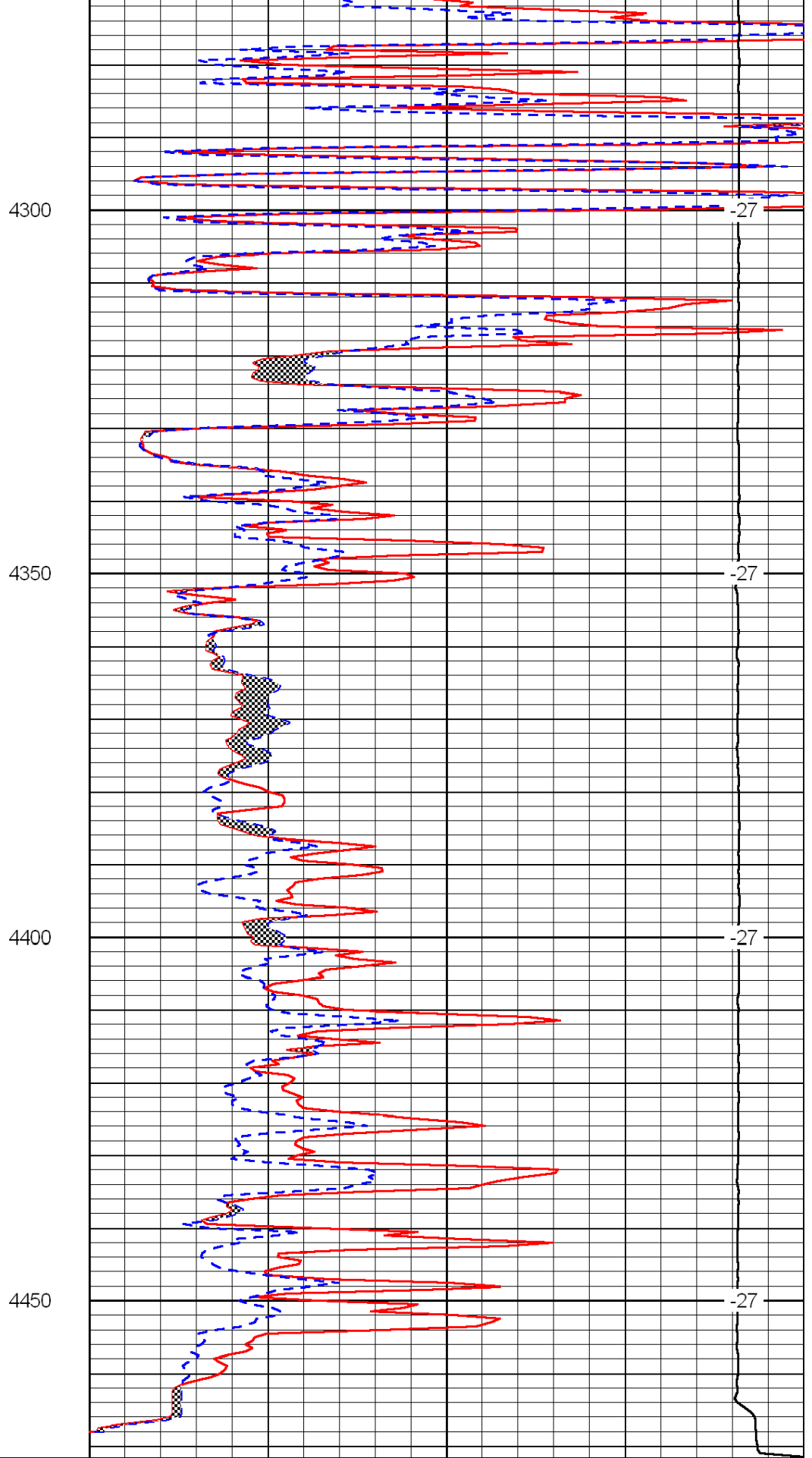
-30

-28

-28



0	Gamma Ray	150
6	Micro Log Caliper (GAPI)	16
-200	SP (mV)	0



0	Micro Inverse 1 X 1	40
0	Micro Normal 2''	40
15000	Line Weight	0

