

APR/10  
 Company: L.D. Drilling, Inc.  
 Well: Darrel No. 1-31  
 Field: Lundgren  
 County: Gove  
 State: Kansas  
 Location: 1,850' FSL & 330' FWL  
 CEMENTED D.L./M.E.L.

APR/10  
 Company: L.D. Drilling, Inc.  
 Well: Darrel No. 1-31  
 Field: Lundgren  
 County: Gove  
 State: Kansas  
 Location: 1,850' FSL & 330' FWL  
 CEMENTED D.L./M.E.L.

APR/10  
 Company: L.D. Drilling, Inc.  
 Well: Darrel No. 1-31  
 Field: Lundgren  
 County: Gove  
 State: Kansas  
 Location: 1,850' FSL & 330' FWL  
 CEMENTED D.L./M.E.L.

APR/10  
 Company: L.D. Drilling, Inc.  
 Well: Darrel No. 1-31  
 Field: Lundgren  
 County: Gove  
 State: Kansas  
 Location: 1,850' FSL & 330' FWL  
 CEMENTED D.L./M.E.L.

<<< Fold Here >>>

All interpretations are opinions based on inferences from electrical or other measurements and we cannot and do not guarantee the accuracy or correctness of any interpretation, and we shall not, except in the case of gross or willful negligence on our part, be liable or responsible for any loss, costs, damages, or expenses incurred or sustained by anyone resulting from any interpretation made by any of our officers, agents or employees. These interpretations are also subject to our general terms and conditions set out in our current Price Schedule.

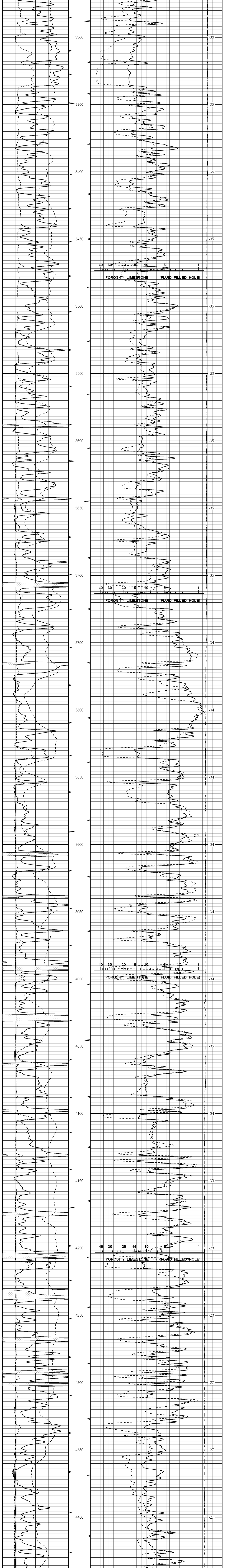
Comments

Thank you for using Log-Tech, Inc.  
 (785) 625-3858

Gove, West to Rd 26, 6 South to Rd M, 3 East to Rd 32, 4 South to Rd I, 1 East to Rd 34, 1 1/2 South, South Into

Database File: ldrilling\_darrel\_1-31.db  
 Dataset Pathname: stack/pass3.1  
 Presentation Format: ragoni  
 Dataset Creation: Wed Jul 14 23:30:58 2010 by Calc Open-Cased 090629  
 Charted by: Depth in Feet scaled 1:240

0	Gamma Ray (GAPI)	150	0.2	RLI.3 (Ohm-m)	2000
6	Caliper (in)	16	6900	CNSSC (cps)	22700
0	S P (mV)	200	10000	Line Weight (lb)	0



0	Gamma Ray (GAPI)	150	0.2	RLI.3 (Ohm-m)	2000
6	Caliper (in)	16	6900	CNSSC (cps)	22700
0	S P (mV)	200	10000	Line Weight (lb)	0

LSPD (ft/min)