



Dual Compensated
Porosity Log

DIGITAL LOG (785) 625-3858

API No. 15-063-21,841-00-00

Company L. D. Drilling, Inc.
Well Darrel No. 1-31
Field Lundgren
County Gove State Kansas

Location 1,850' FSL & 330' FWL

Sec: 31 Twp: 14S Rge: 29W

Other Services
DIL
MEL/RAG

Permanent Datum Ground Level Elevation 2695
Log Measured From Kelly Bushing 5 Ft. Above Perm. Datum
Drilling Measured From Kelly Bushing

K.B. 2700
D.F.
G.L. 2695

Date 7/14/2010

Run Number One

Type Log CNL / CDL

Depth Driller 4465

Depth Logger 4464

Bottom Logged Interval 4443

Top Logged Interval 3200

Type Fluid In Hole Chemical

Salinity, PPM CL 3300

Density 9.2

Level Full

Max. Rec. Temp. F 121

Operating Rig Time 4 Hours

Equipment -- Location 10 Days

Recorded By J. Long

Witnessed By Tom Funk

Borehole Record				Casing Record			
Run No.	Bit	From	To	Size	Wgt.	From	To
1	12.25	00	267	8.625	24#	00	267
2	7.875	267	4465				

<<< Fold Here >>>

All interpretations are opinions based on inferences from electrical or other measurements and we cannot and do not guarantee the accuracy or correctness of any interpretation, and we shall not, except in the case of gross or willful negligence on our part, be liable or responsible for any loss, costs, damages, or expenses incurred or sustained by anyone resulting from any interpretation made by any of our officers, agents or employees. These interpretations are also subject to our general terms and conditions set out in our current Price Schedule.

Comments

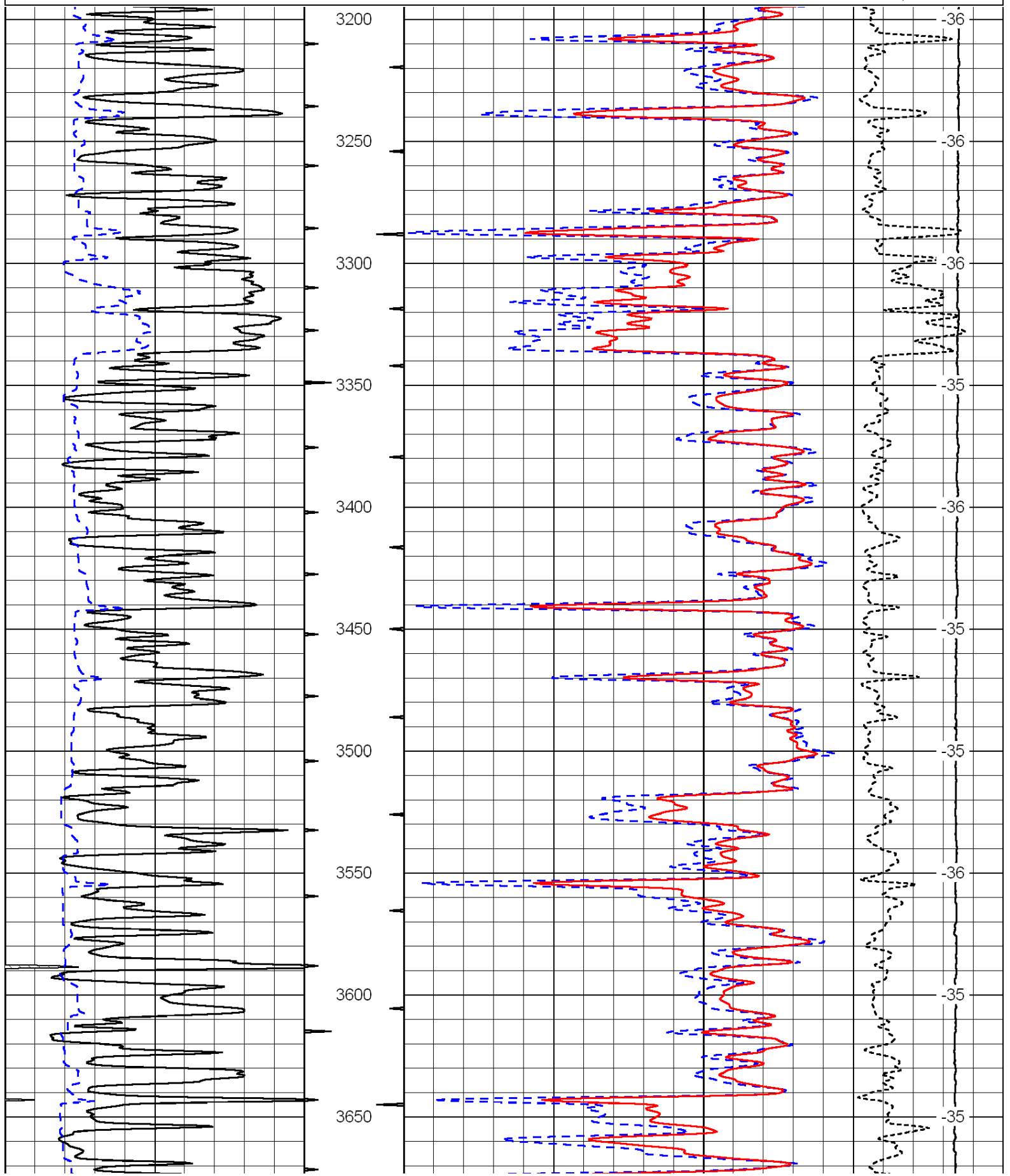
Thank you for using Log-Tech, Inc.
(785) 625-3858

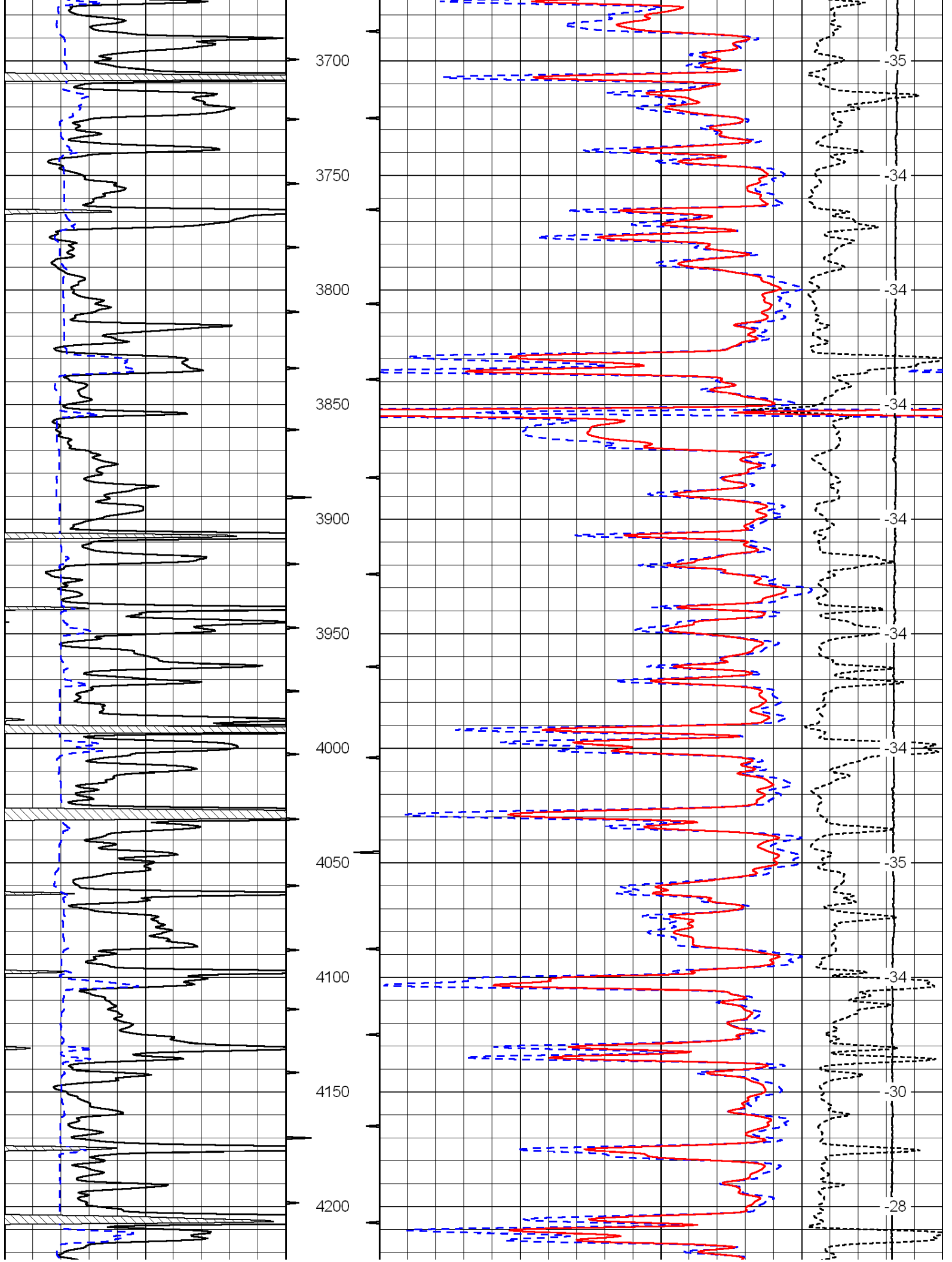
Gove, West to Rd 26, 6 South to Rd M, 3 East to Rd 32, 4 South to Rd I, 1 East to Rd 34, 1 1/2 South, South Into

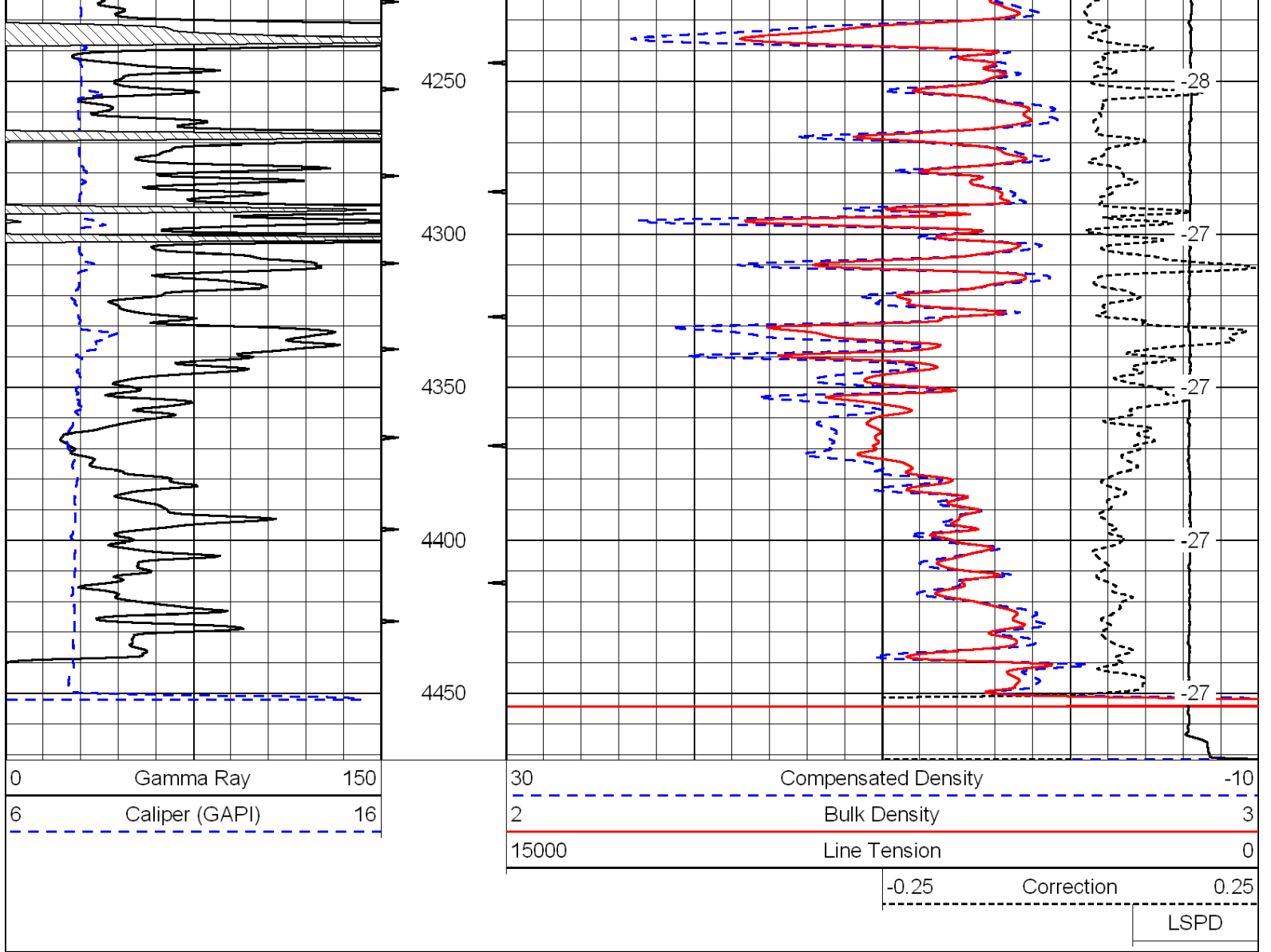
Database File: c:\warrior\data\ld drilling_darrel no. 1-31\lddrilling.db
 Dataset Pathname: dil\dstck
 Presentation Format: cdl
 Dataset Creation: Wed Jul 14 23:29:34 2010
 Charted by: Depth in Feet scaled 1:600

0	Gamma Ray	150
6	Caliper (GAPI)	16

30	Compensated Density	-10
2	Bulk Density	3
15000	Line Tension	0
-0.25	Correction	0.25
LSPD		







Database File: c:\warrior\data\ld drilling_darrel no. 1-31\ldrilling.db
 Dataset Pathname: dil/ldstck
 Presentation Format: cndlspec
 Dataset Creation: Wed Jul 14 23:29:34 2010
 Charted by: Depth in Feet scaled 1:240

