



DIGITAL LOG (785) 625-3858

Borehole Compensated
Sonic Log

API No. 15-195-22,646-00-00

Company **Murfin Drilling Company, Inc.**
Well **Hendricks No. 1-16**
Field **Wildcat**
County **Trego** State **Kansas**

Location **2000' FNL & 1220' FEL**

Sec: **16** Twp: **12S** Rge: **24W**

Other Services
CNL/CDL
MEL/DIL

Permanent Datum **Ground Level** Elevation **2453**
Log Measured From **Kelly Bushing** 5 Ft. Above Perm. Datum
Drilling Measured From **Kelly Bushing**

K.B. 2458
D.F. 2453
G.L. 2453

Date **03/28/2010**

Run Number **Two**

Type Log **BHC Sonic**

Depth Driller **4120**

Depth Logger **4119**

Bottom Logged Interval **4108**

Top Logged Interval **200**

Type Fluid In Hole **Chemical**

Salinity, PPM CL **2,100**

Density **9.0**

Level **Full**

Max. Rec. Temp. F **119**

Operating Rig Time **4 1/2 Hours**

Equipment -- Location **17 Hays**

Recorded By **Mike Garrison**

Witnessed By **Paul Gunzelman**

Borehole Record				Casing Record			
Run No.	Bit	From	To	Size	Wgt.	From	To
1	12.25	00	219	8.625	24#	00	219
2	7.875	219	4120				

<<< Fold Here >>>

All interpretations are opinions based on inferences from electrical or other measurements and we cannot and do not guarantee the accuracy or correctness of any interpretation, and we shall not, except in the case of gross or willful negligence on our part, be liable or responsible for any loss, costs, damages, or expenses incurred or sustained by anyone resulting from any interpretation made by any of our officers, agents or employees. These interpretations are also subject to our general terms and conditions set out in our current Price Schedule.

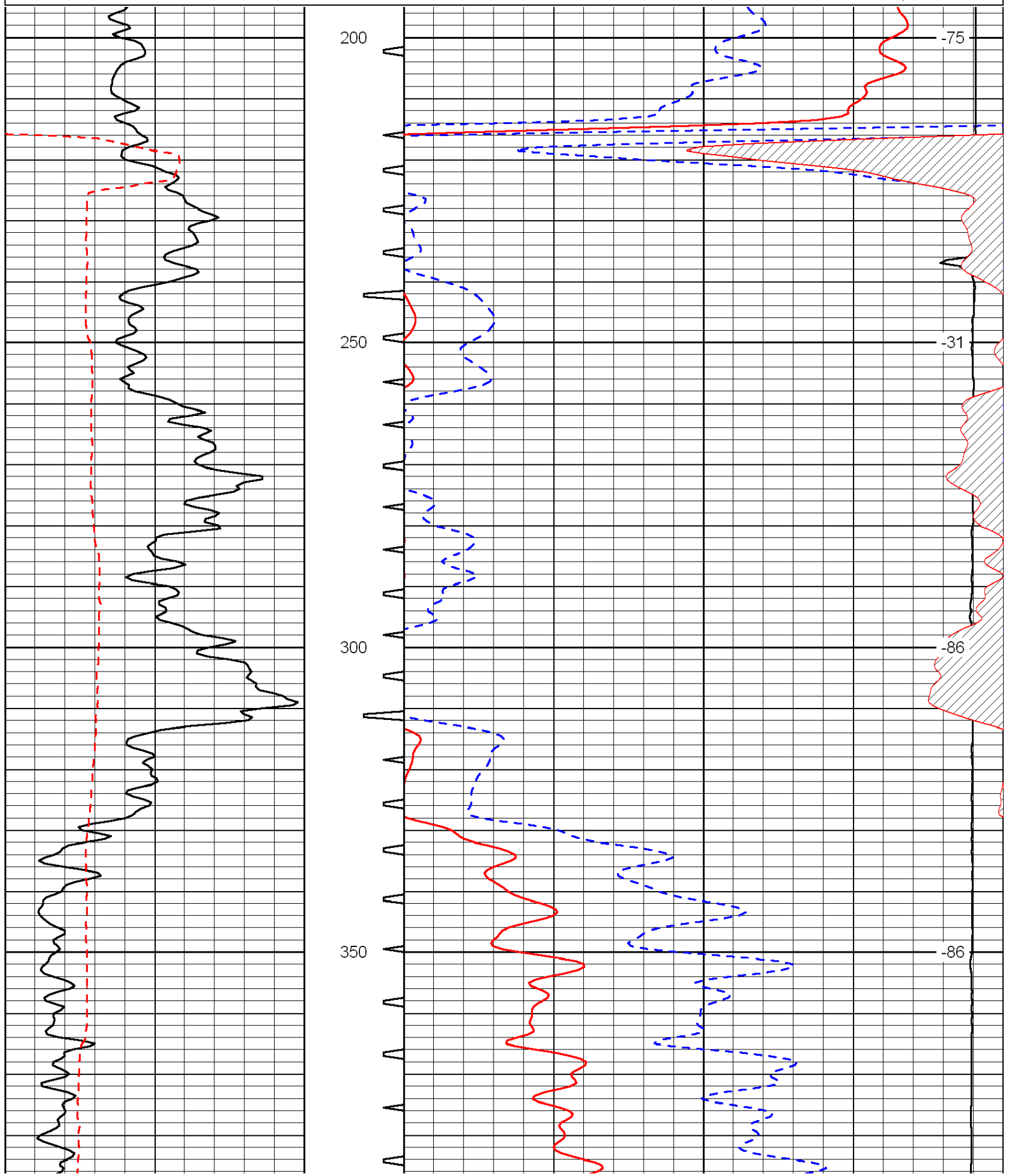
Comments

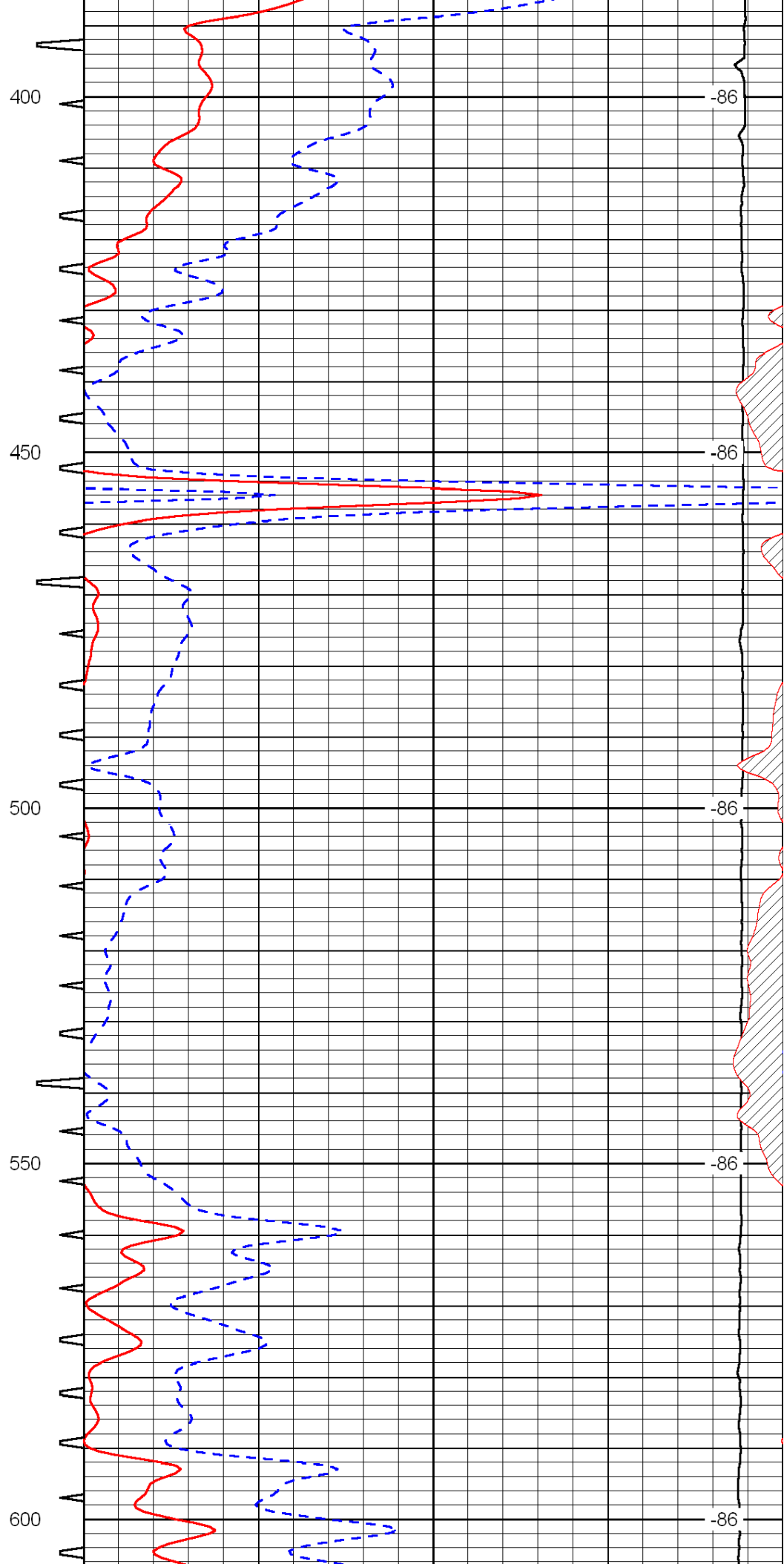
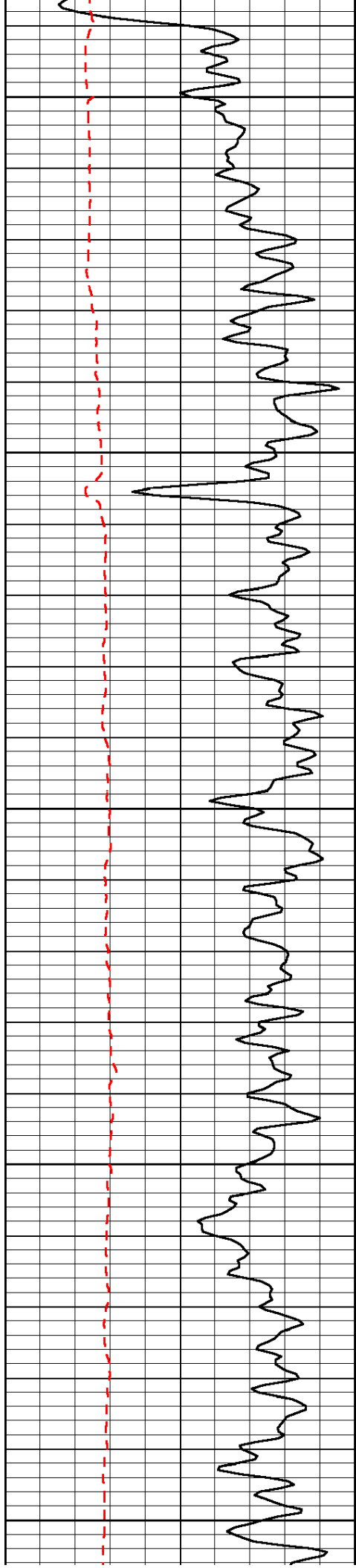
Thank you for using Log-Tech, Inc.
(785) 625-3858

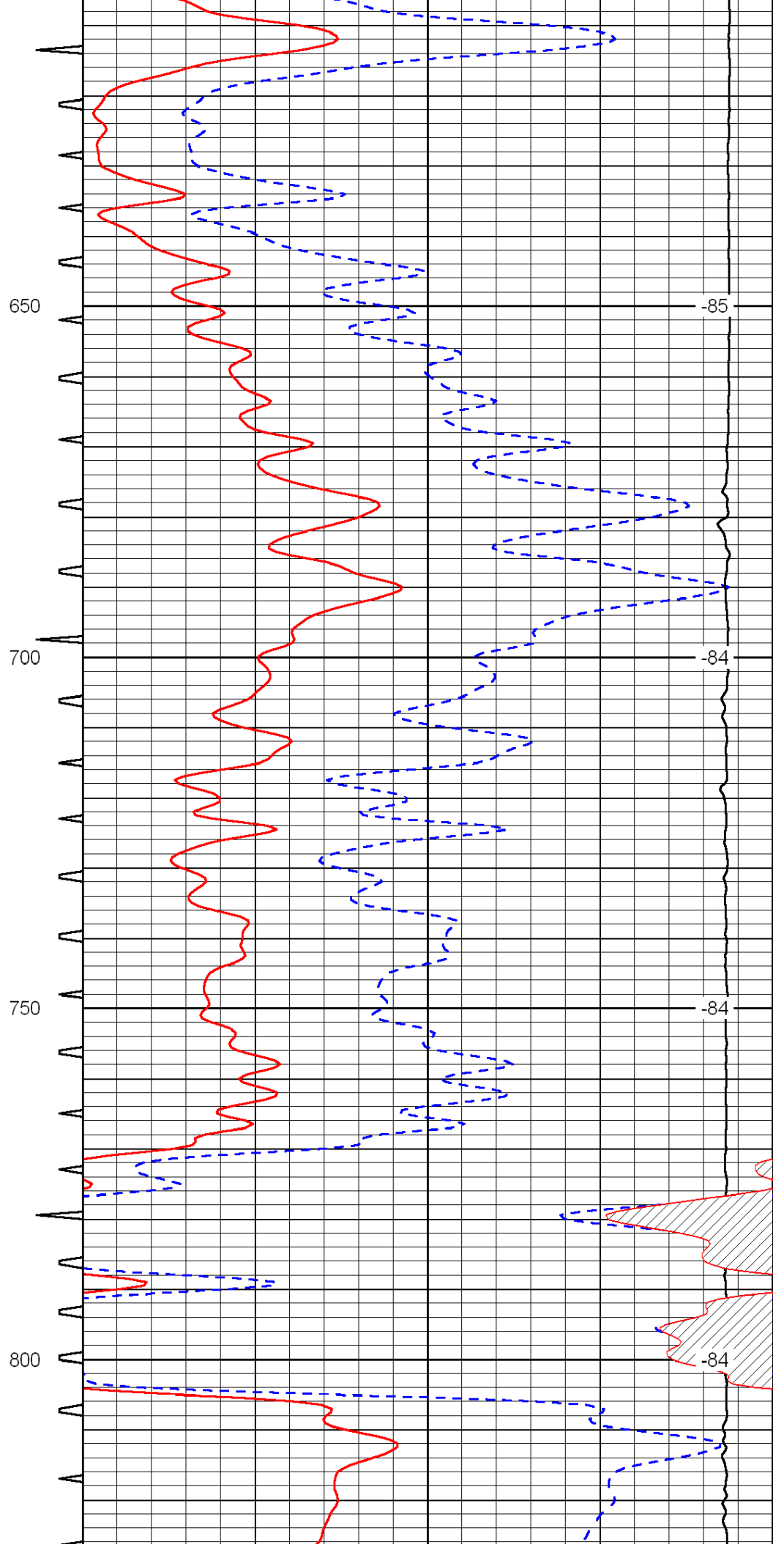
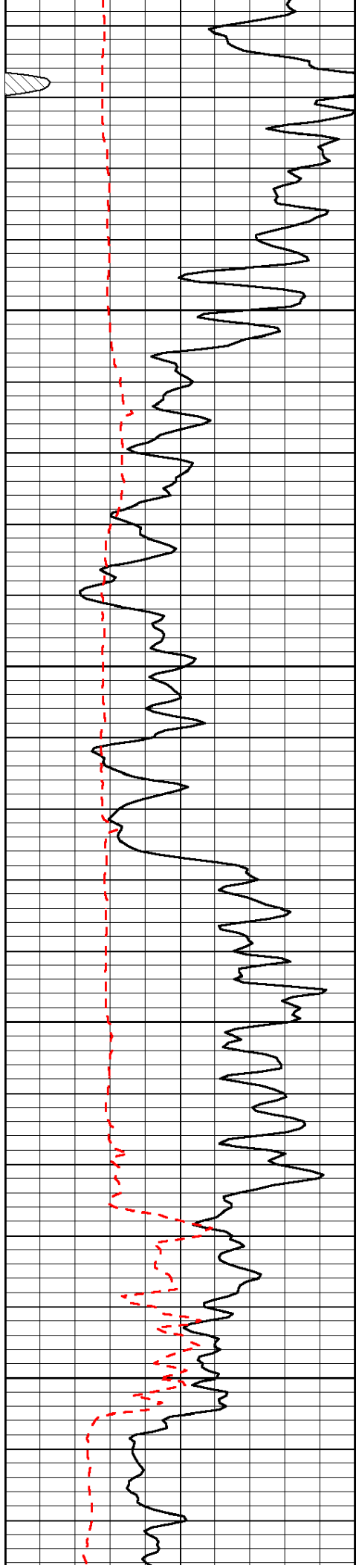
Voda Exit, 1/2 South, 2 East, 1/2 South, West Into

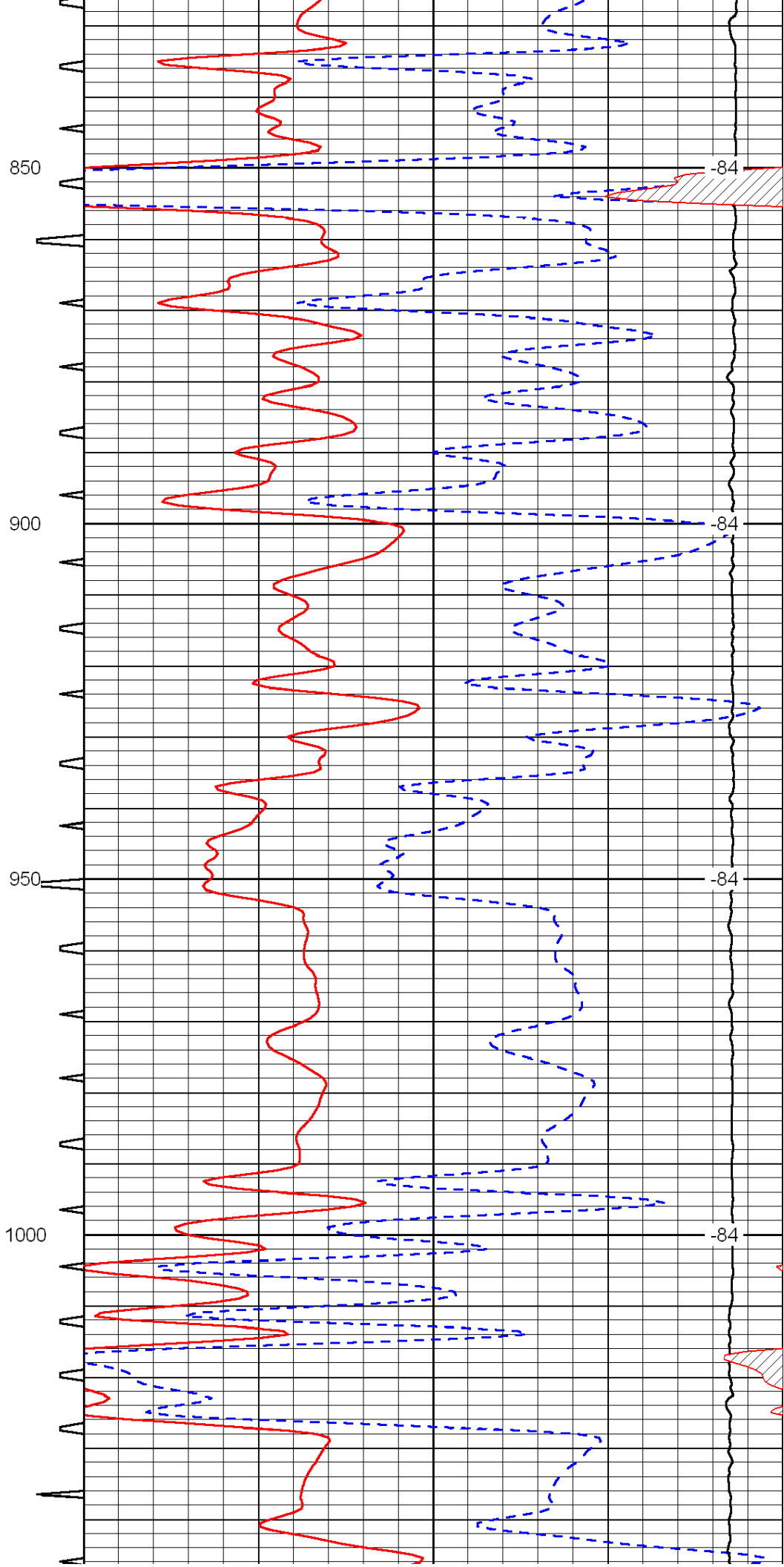
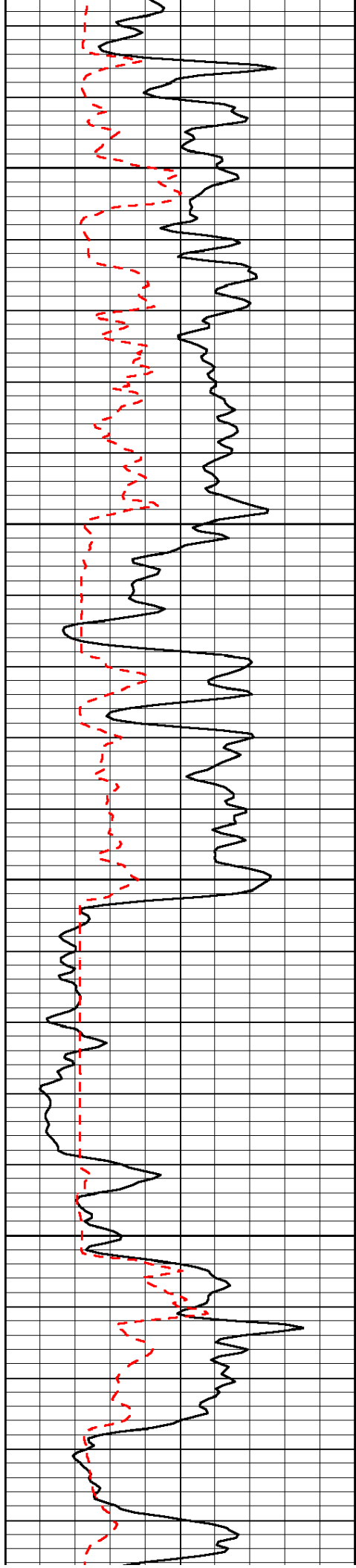
Database File: c:\warrior\data\murfin_hendricks no. 1-16\murfhd.db
 Dataset Pathname: dil/murfstck
 Presentation Format: sonic
 Dataset Creation: Sun Mar 28 08:02:49 2010
 Charted by: Depth in Feet scaled 1:240

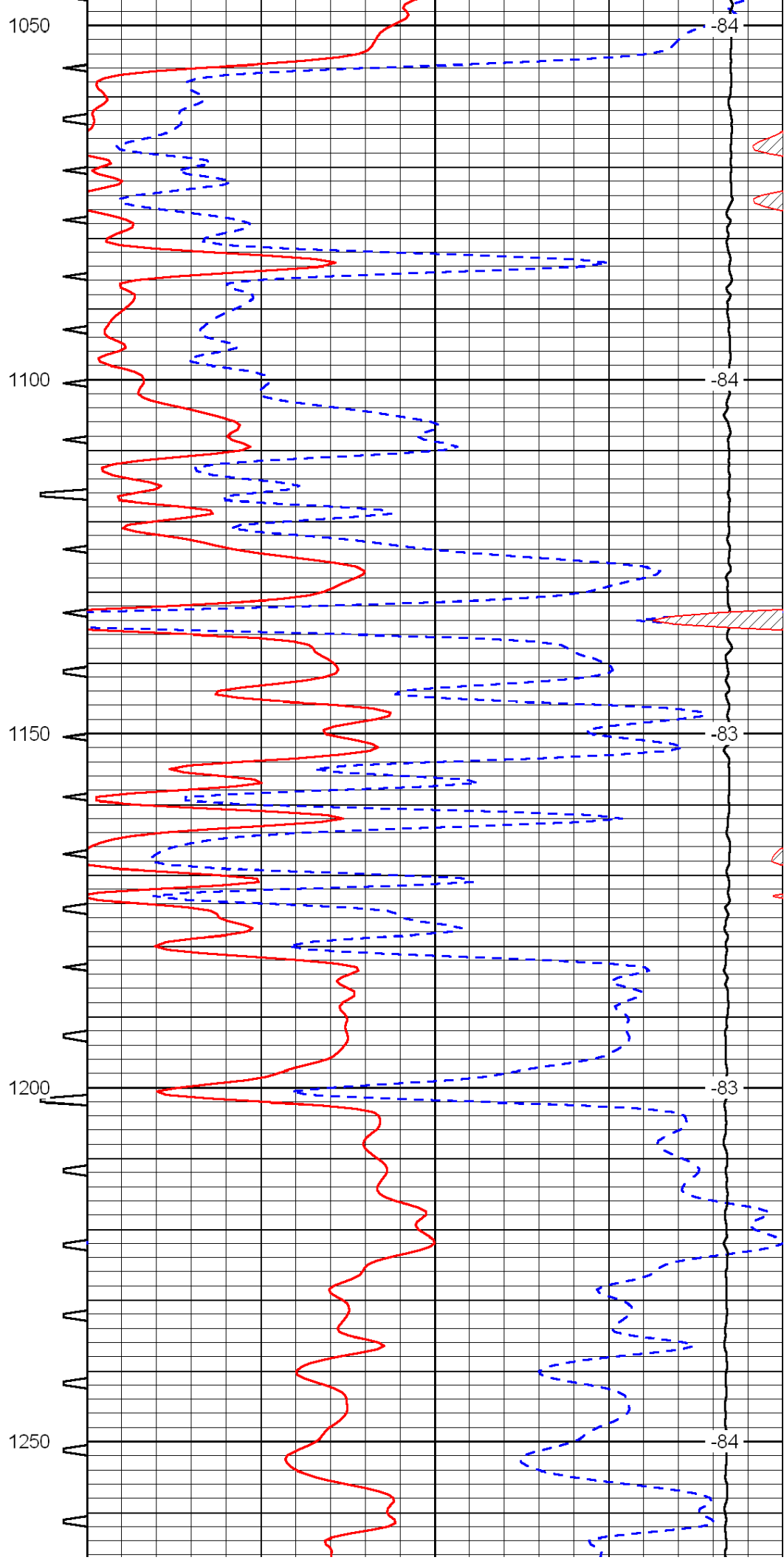
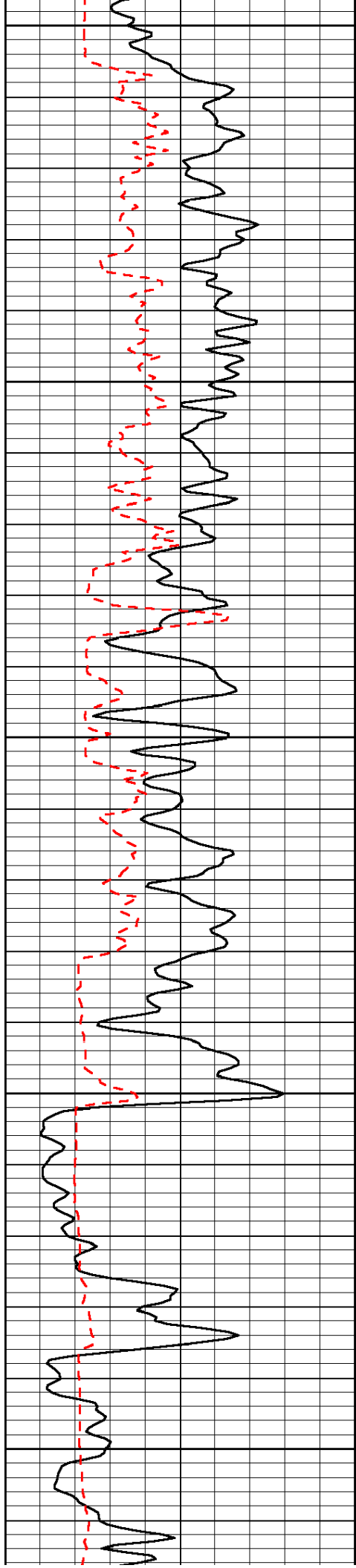
0	Gamma Ray	150	Sonic Int	140	Delta Time (usec/ft) (usec/ft)	40
150	Gamma Ray	300	5 (msec) 0	30	SPOR (pu)	-10
6	Caliper (in)	16		15000	LTEN (lb) (lb)	0
						LSPD (ft/min)

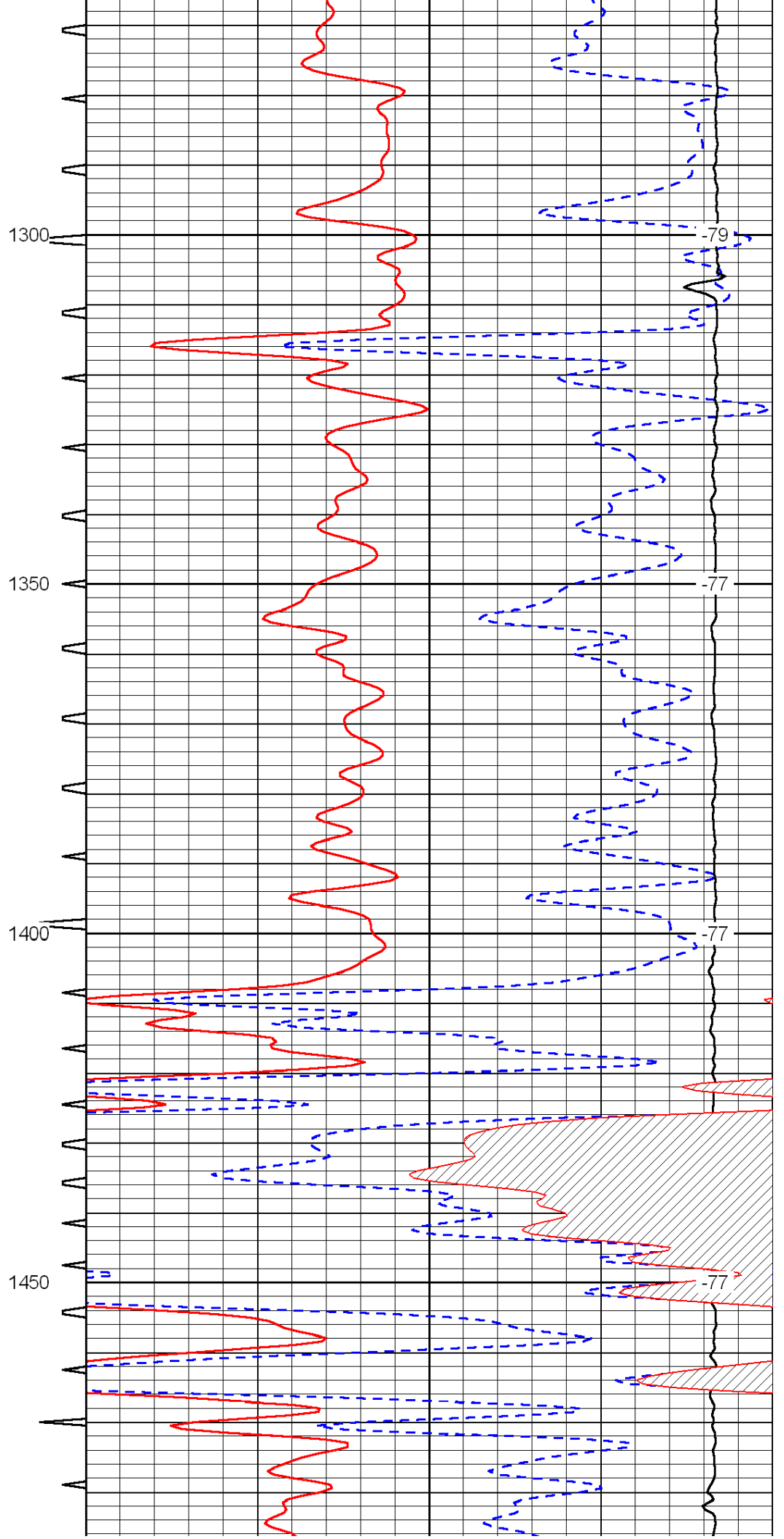
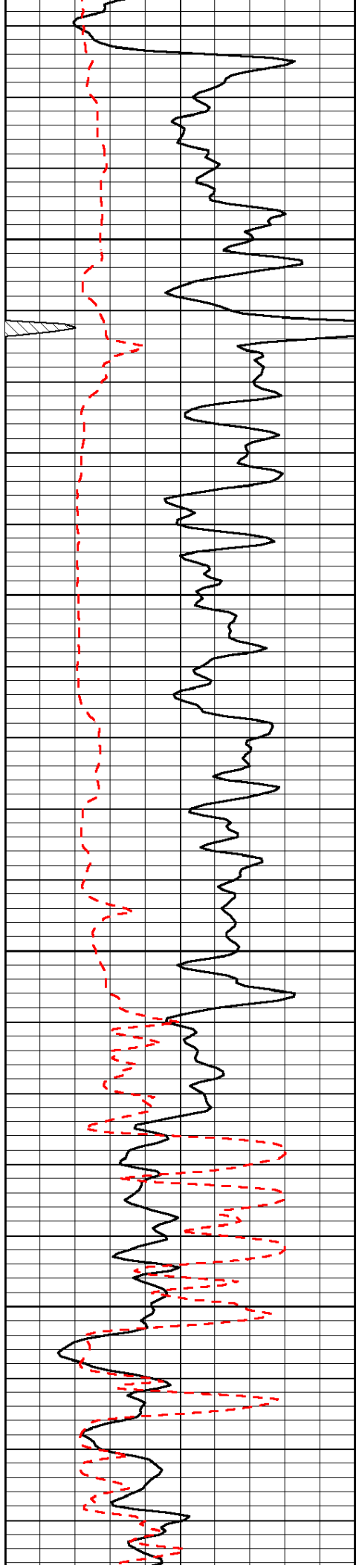


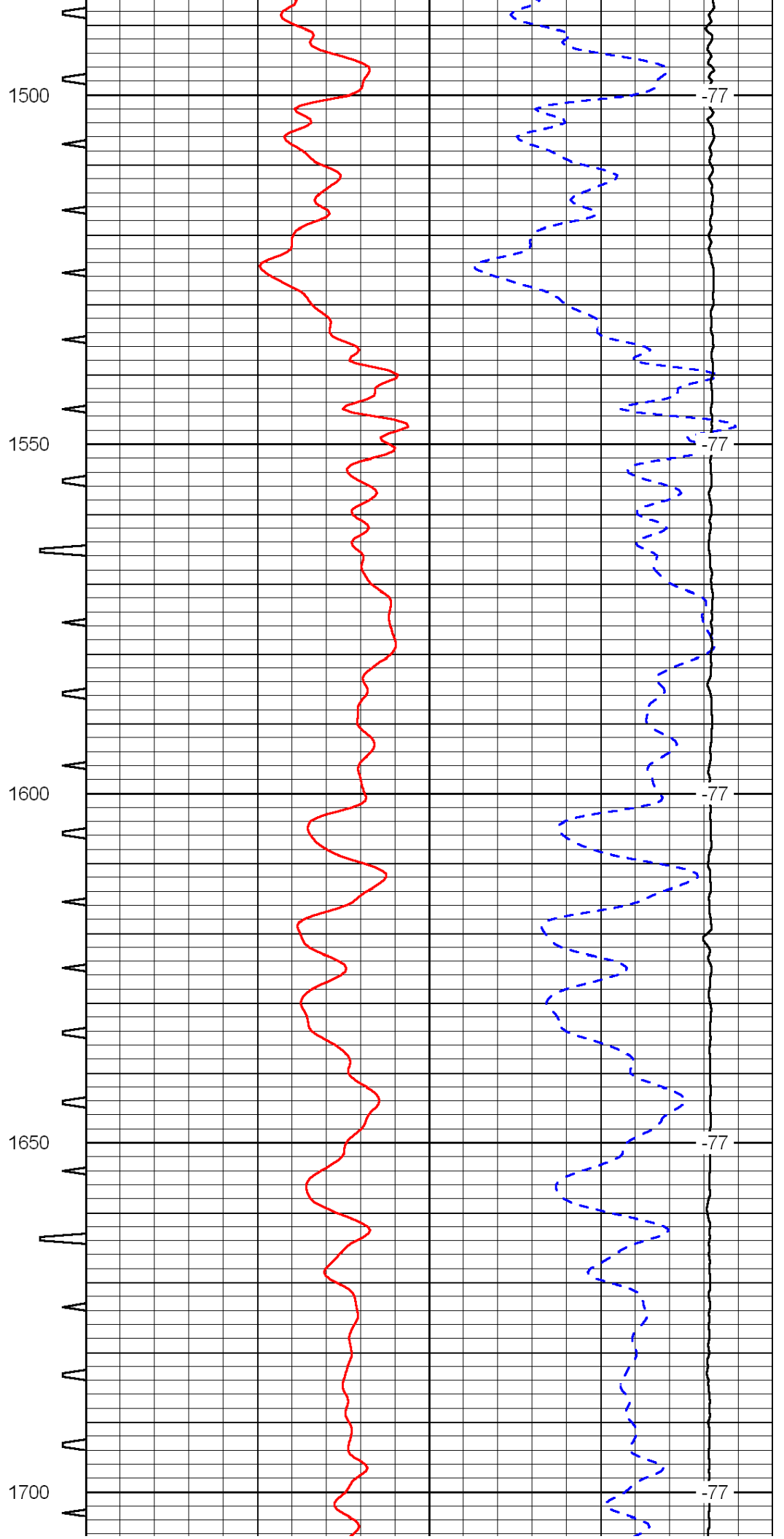
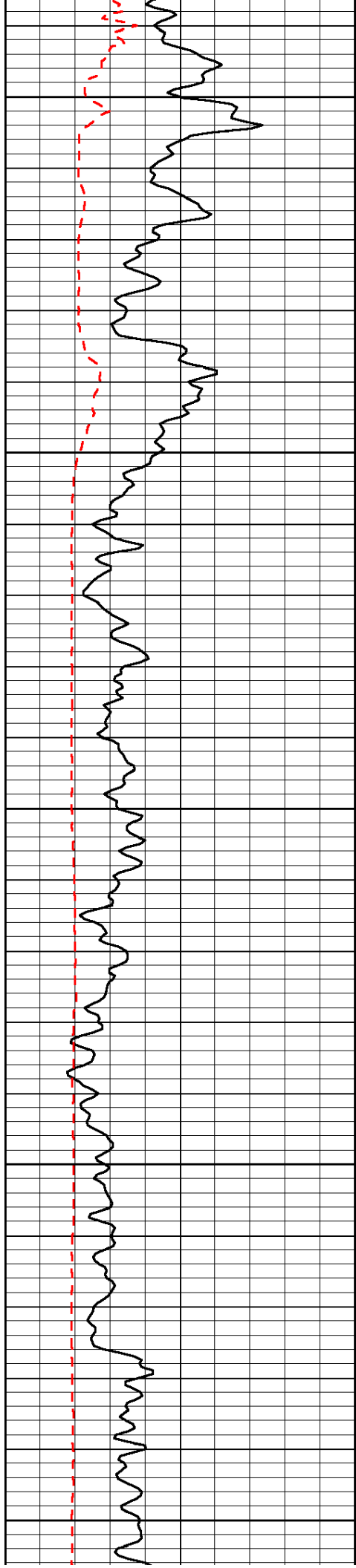


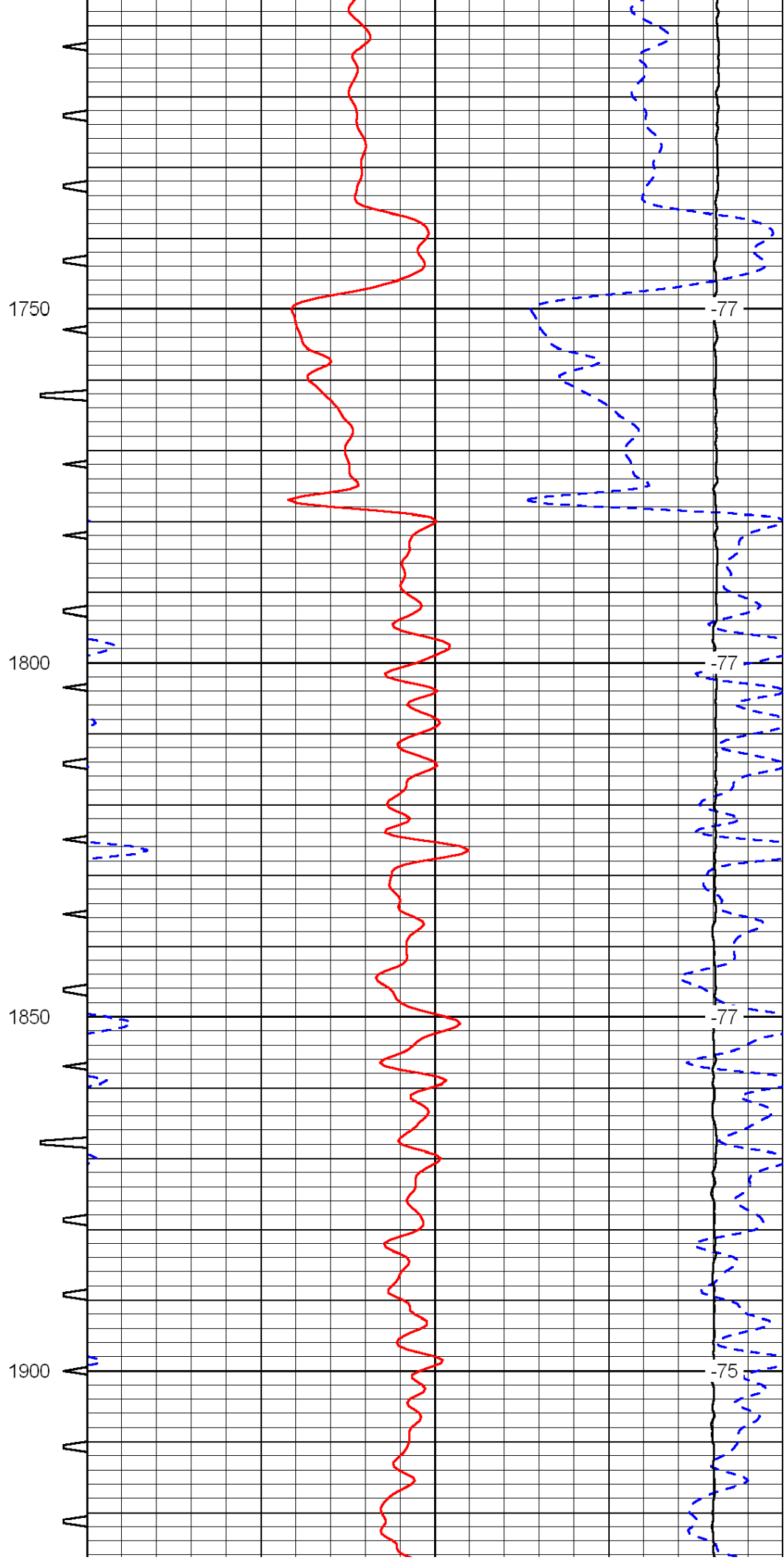
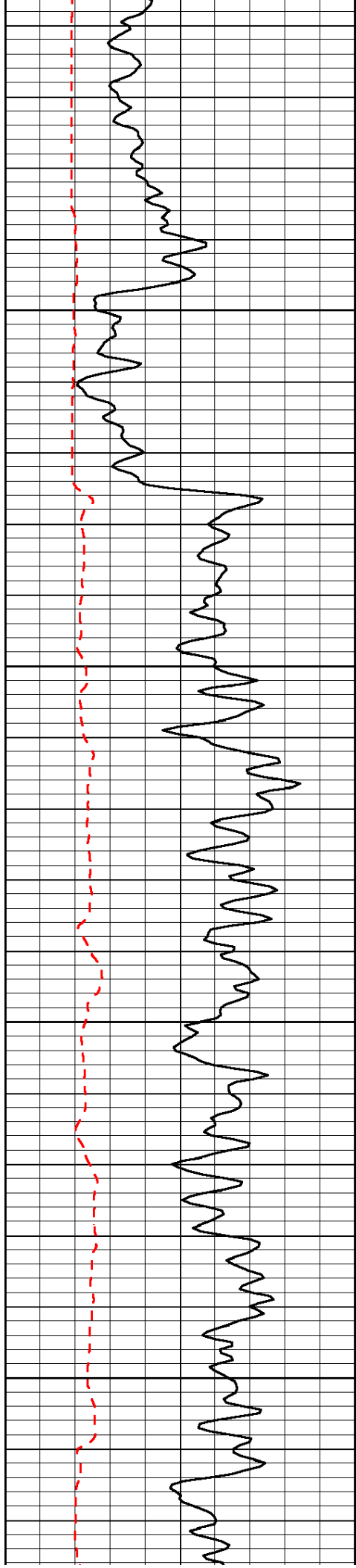


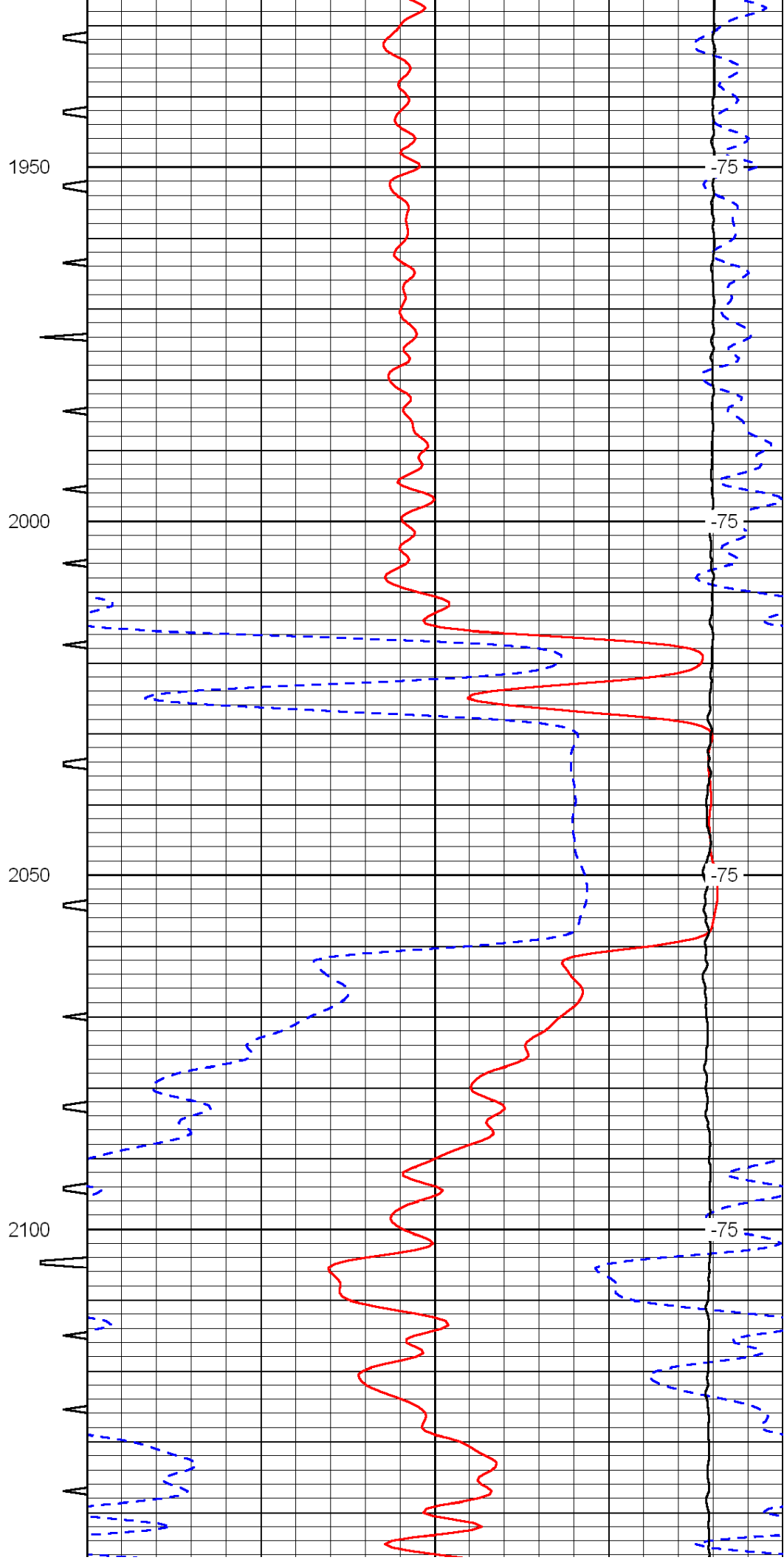
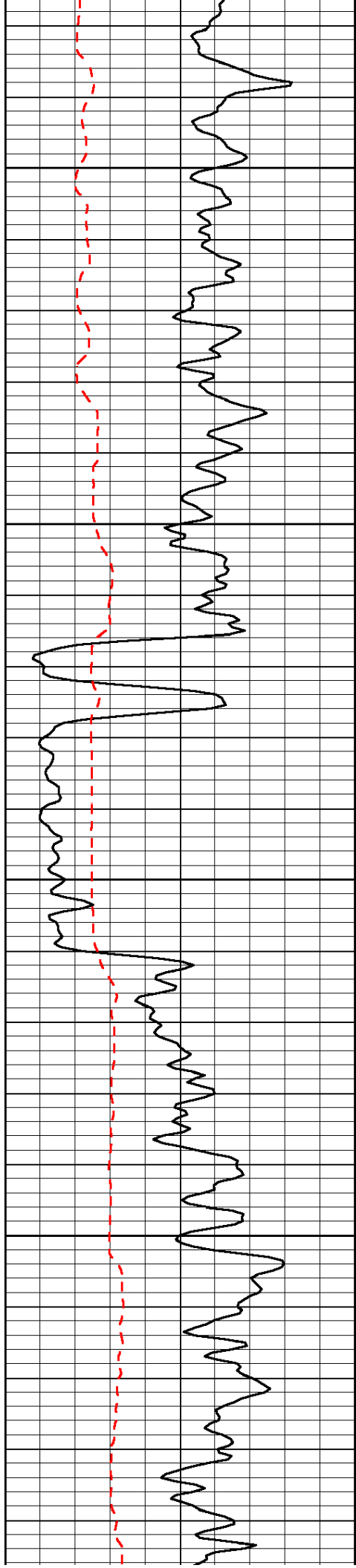


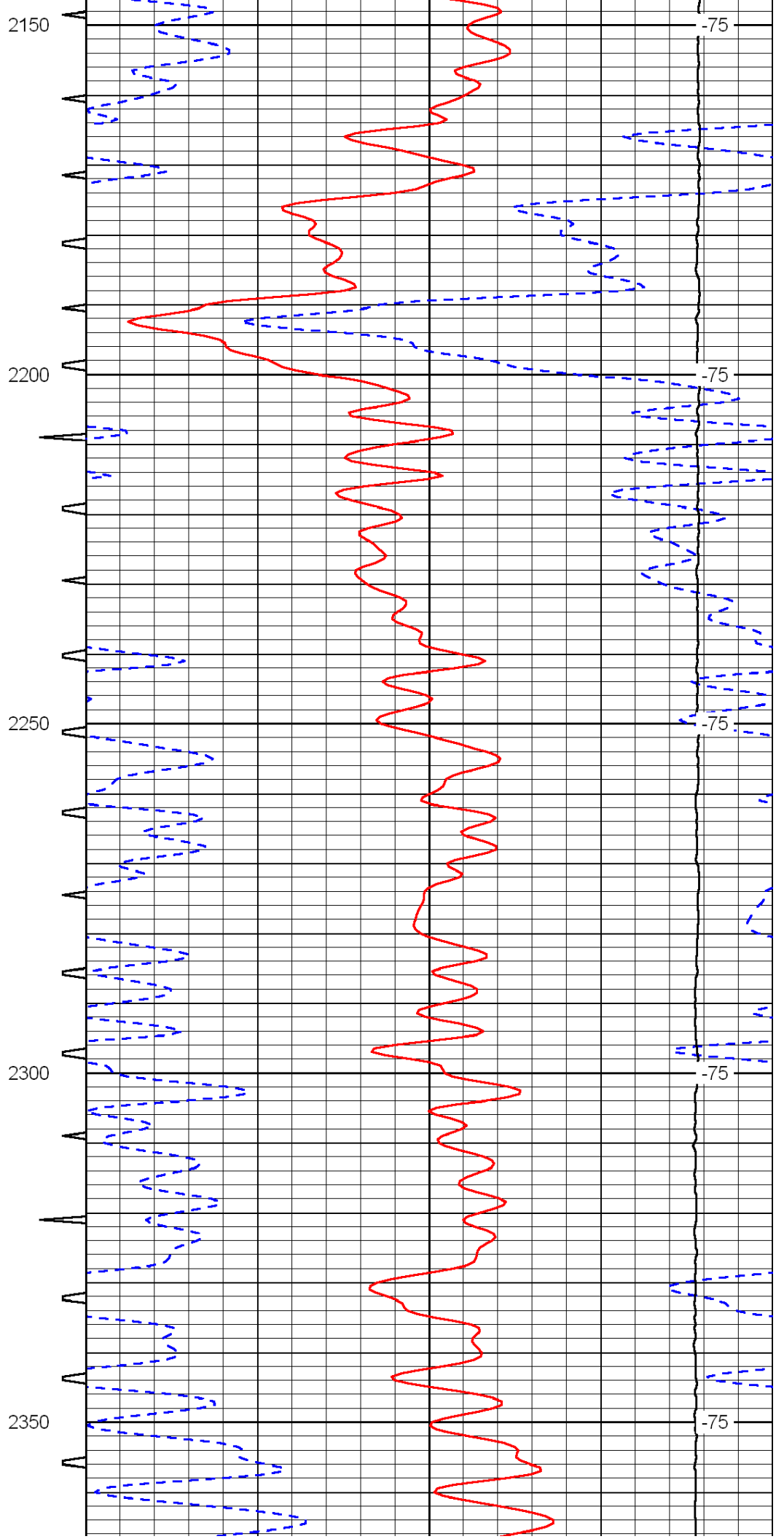
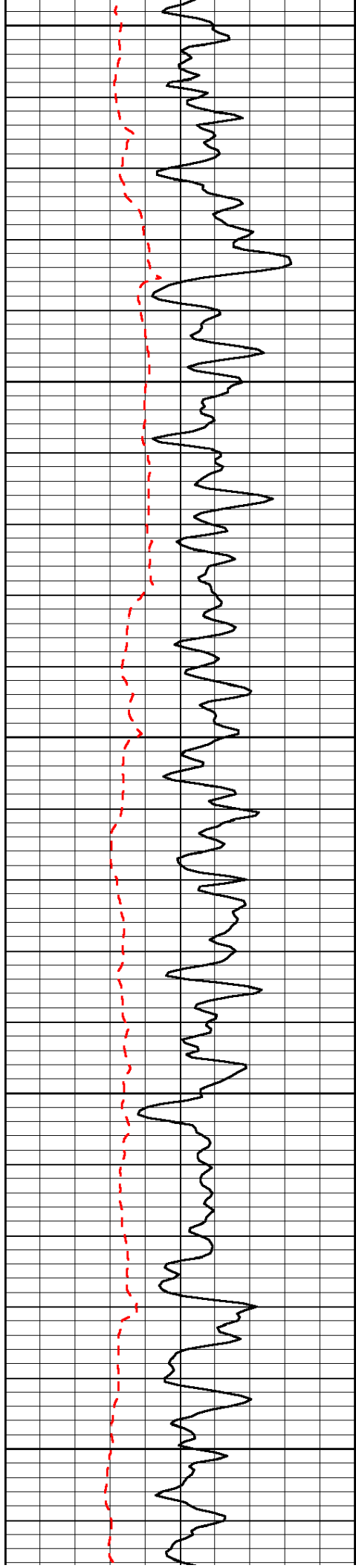


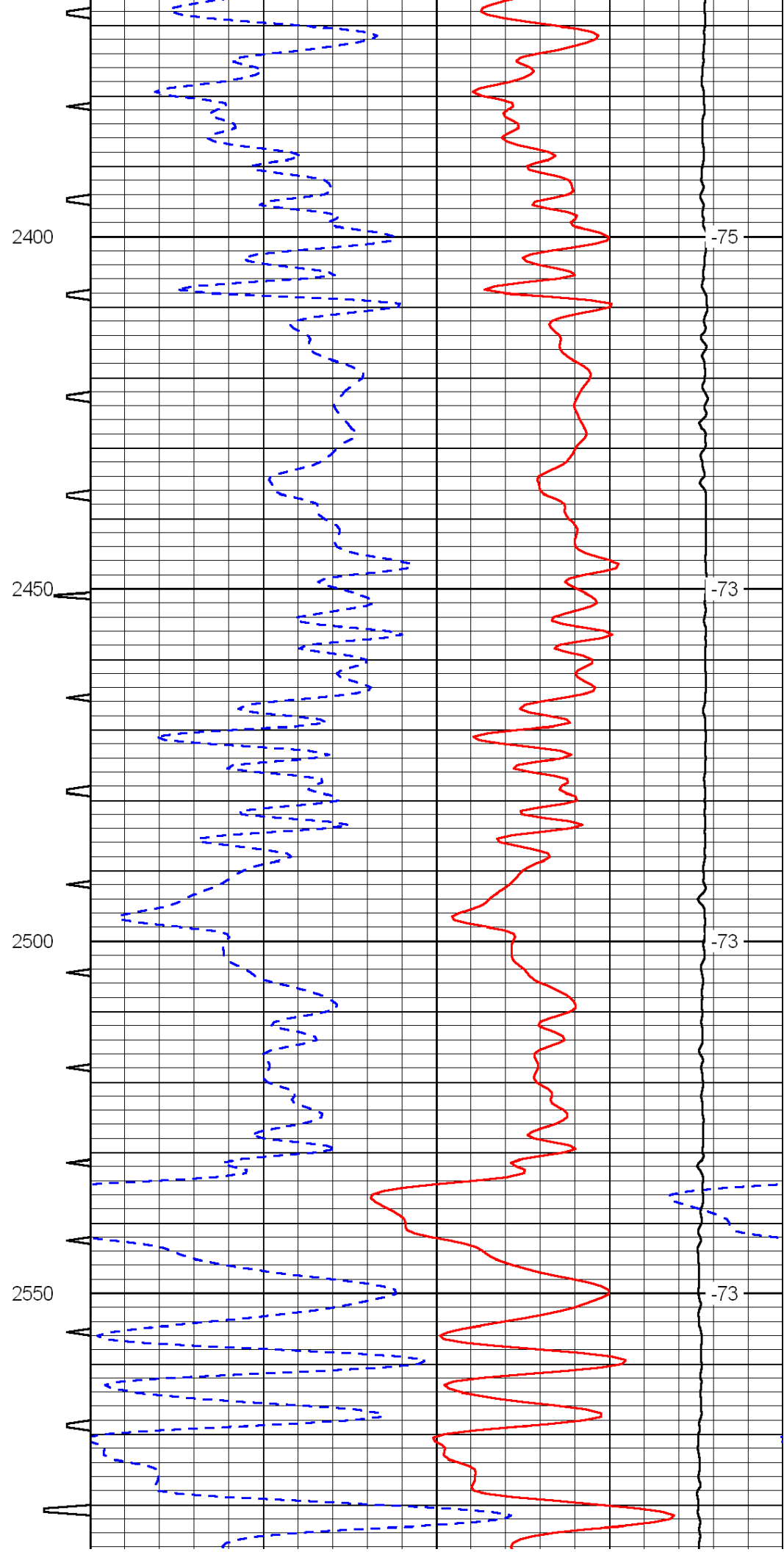
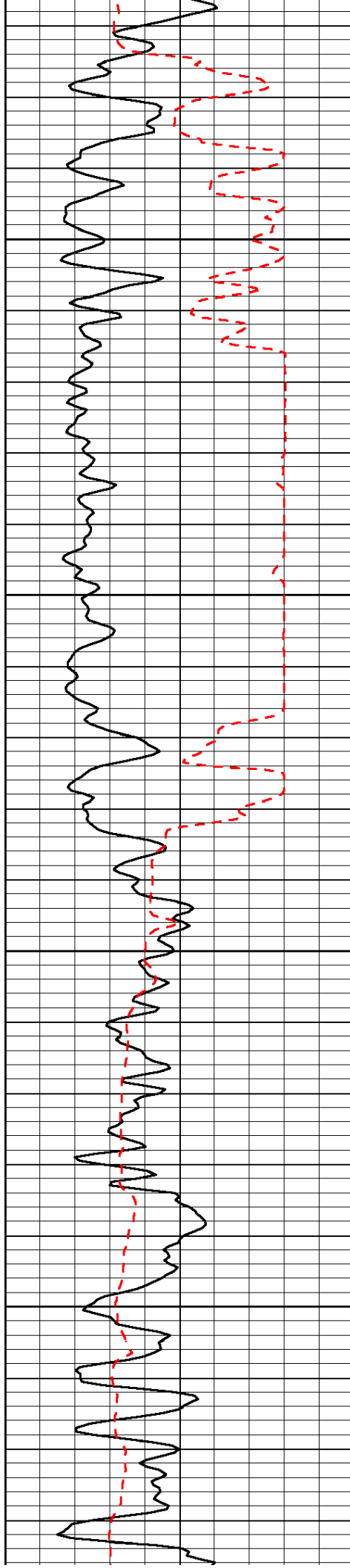


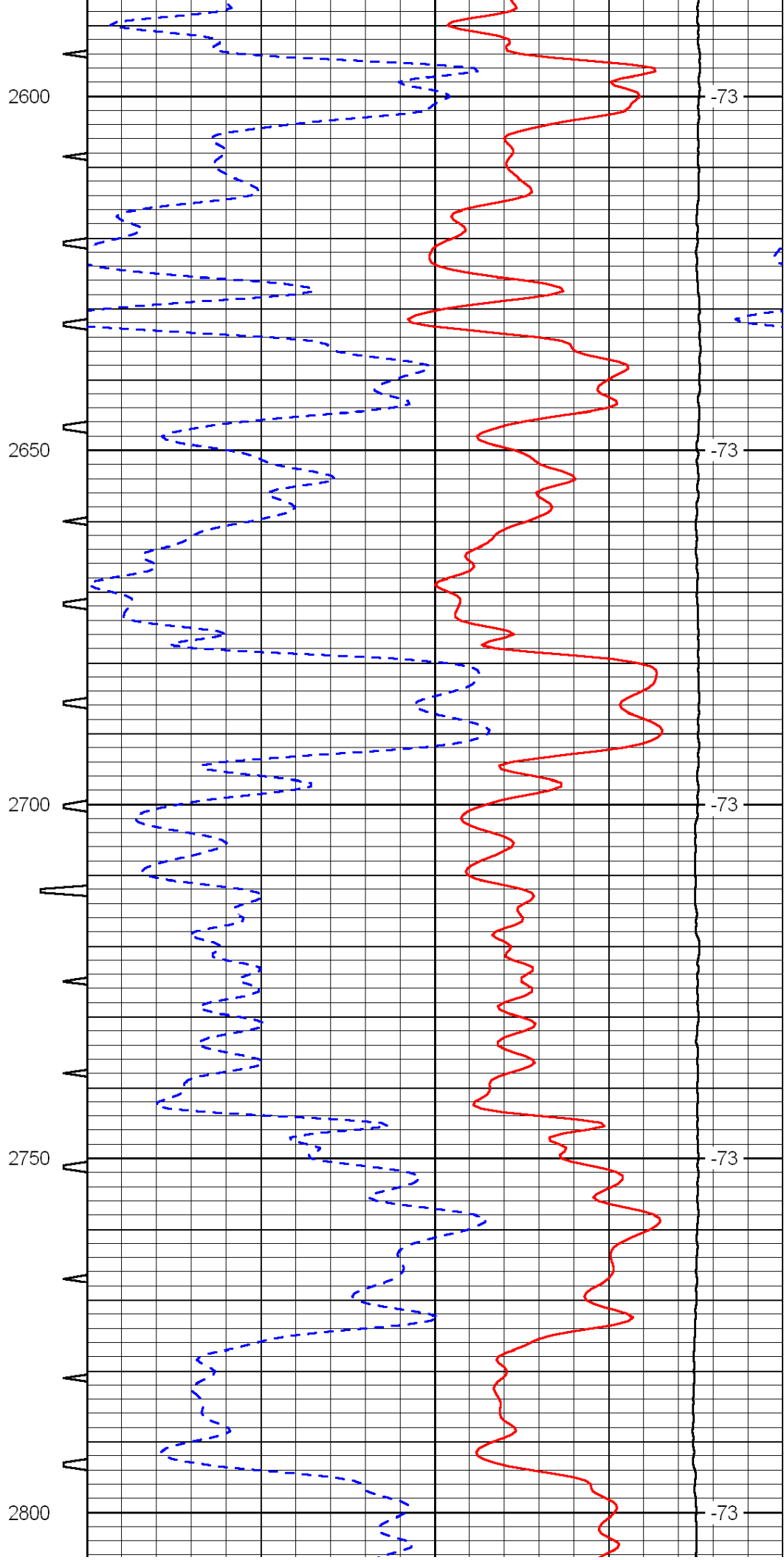
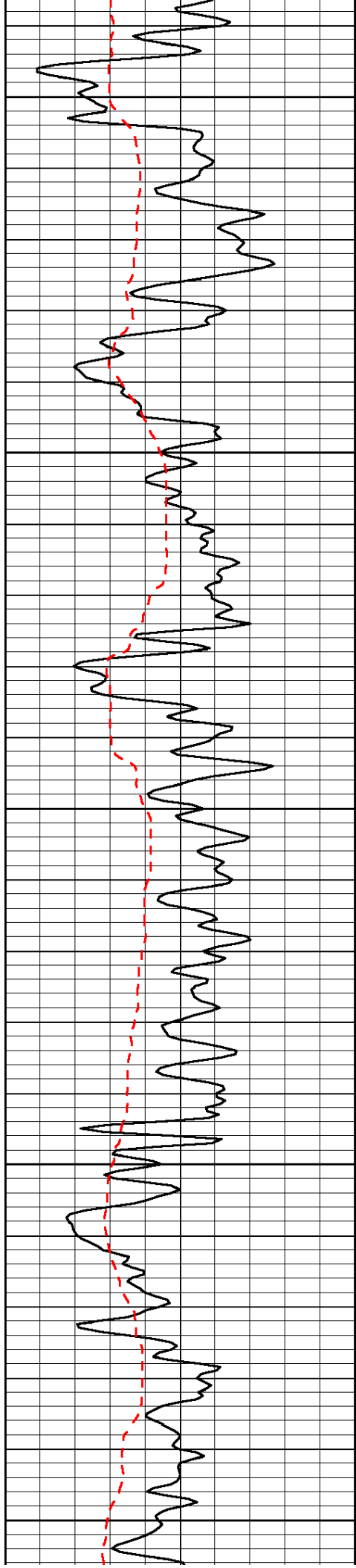


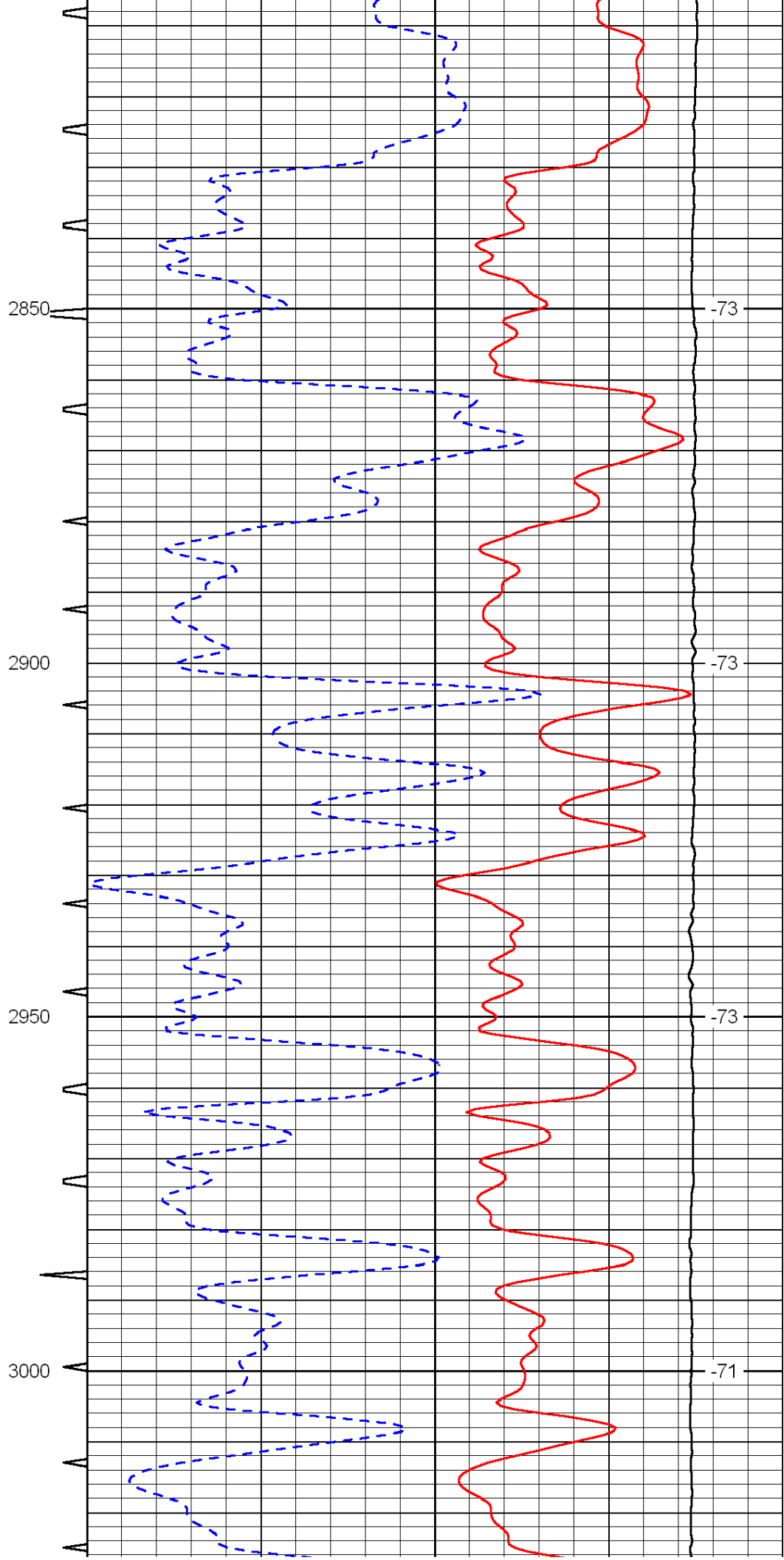
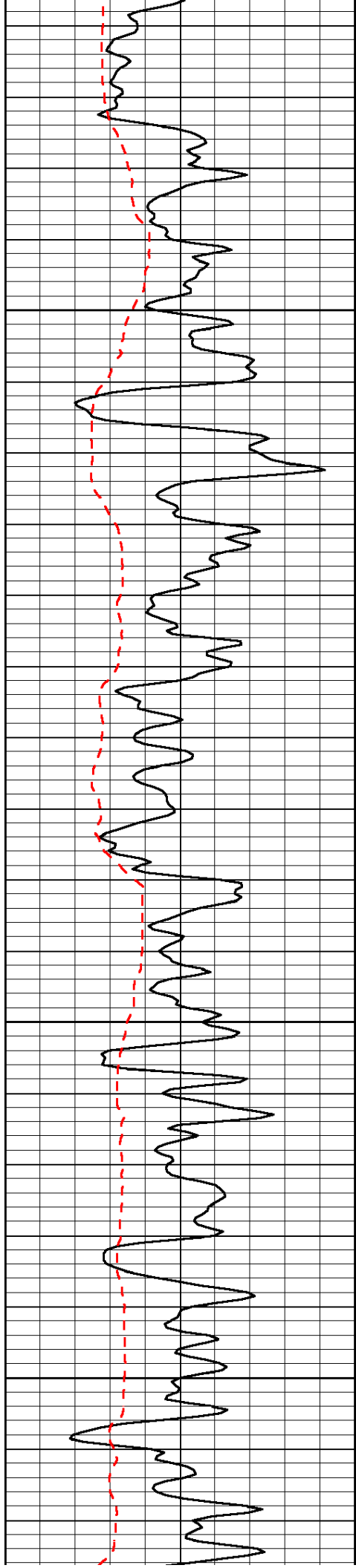


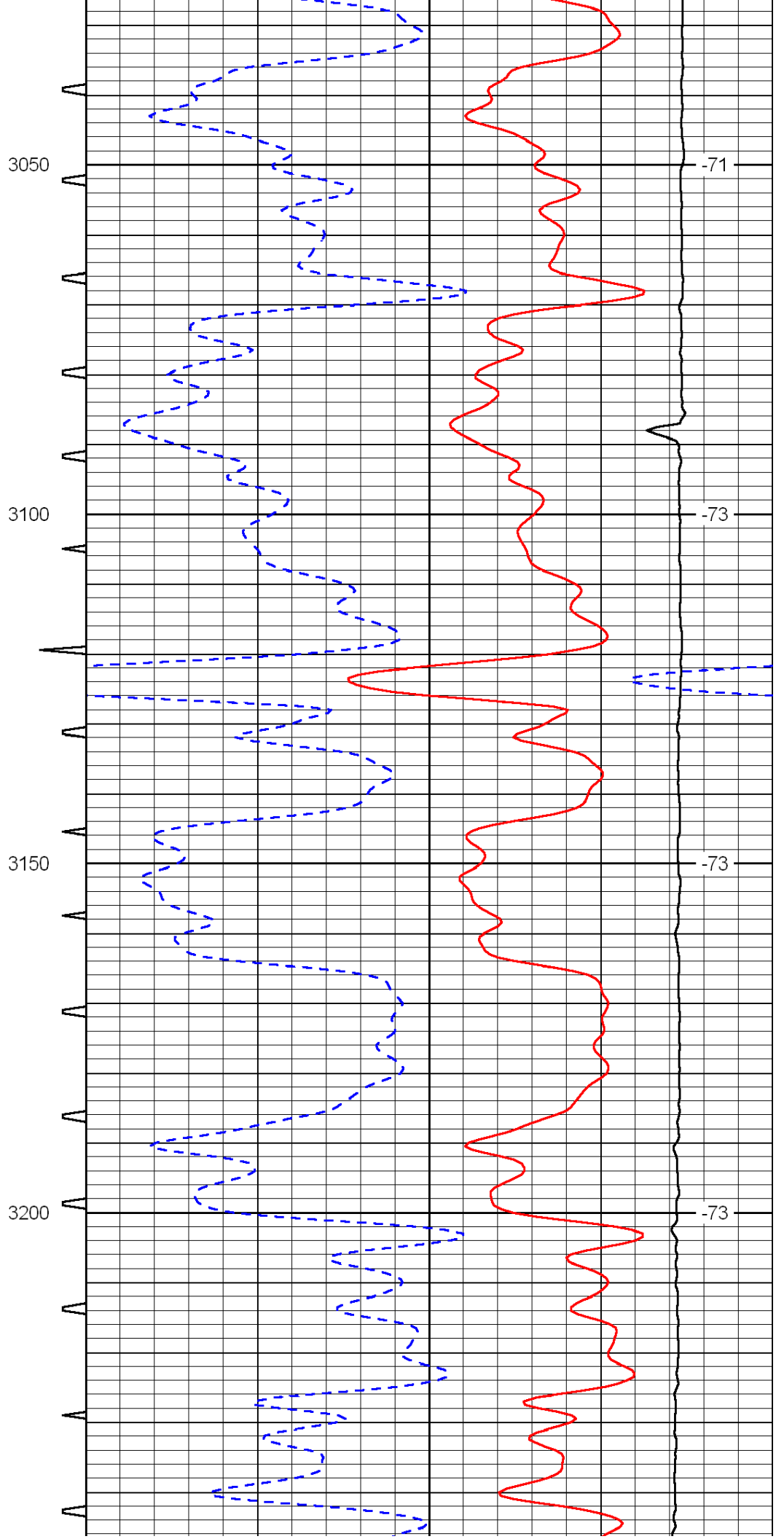
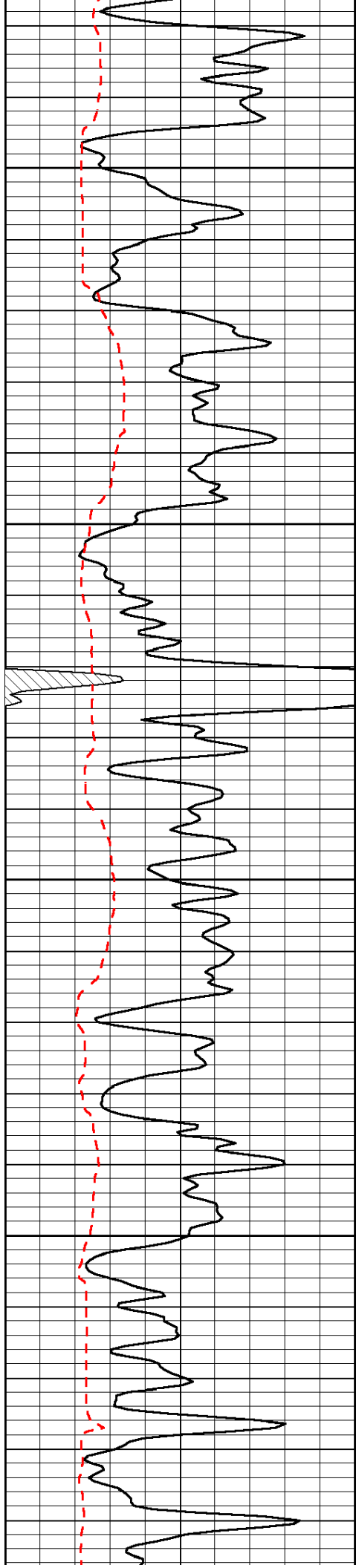


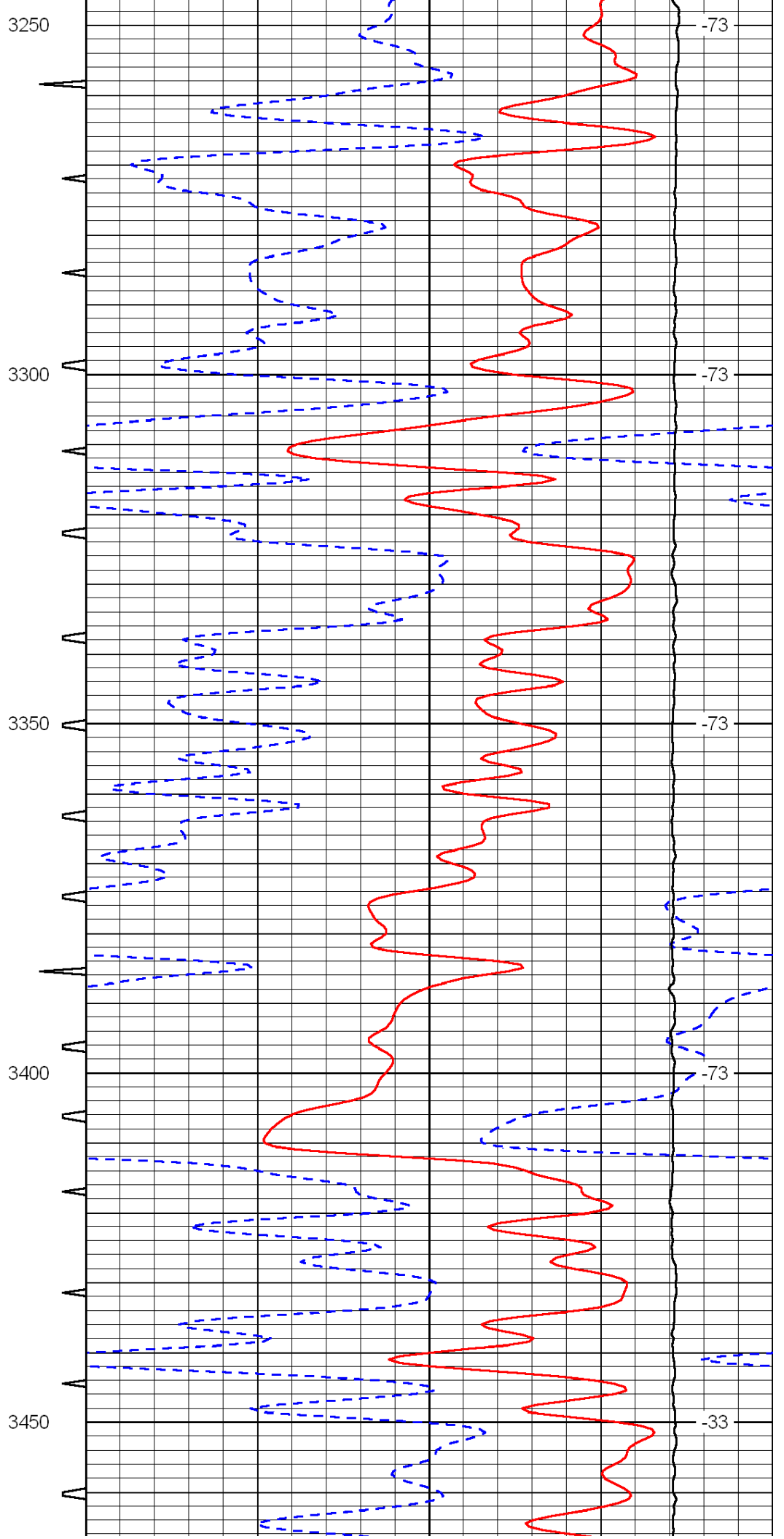
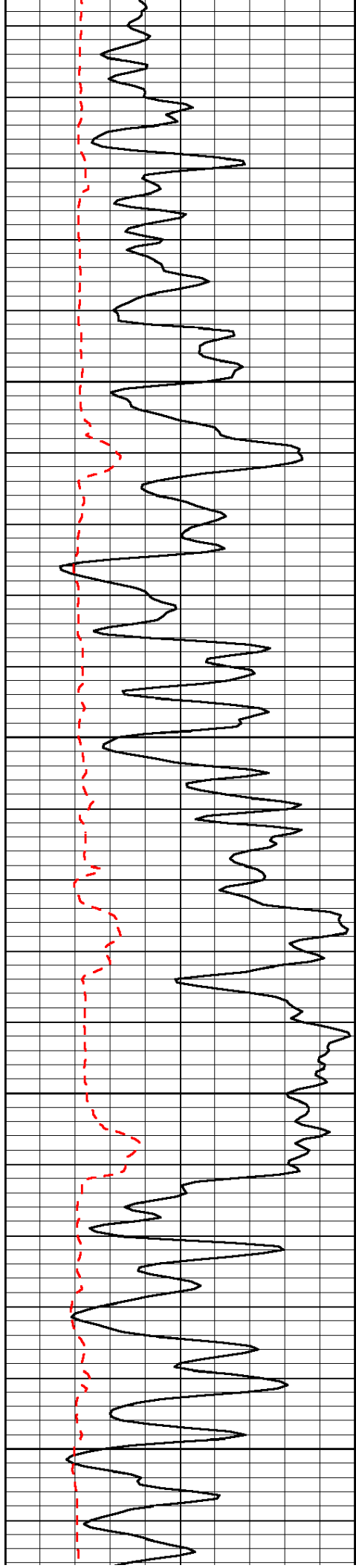


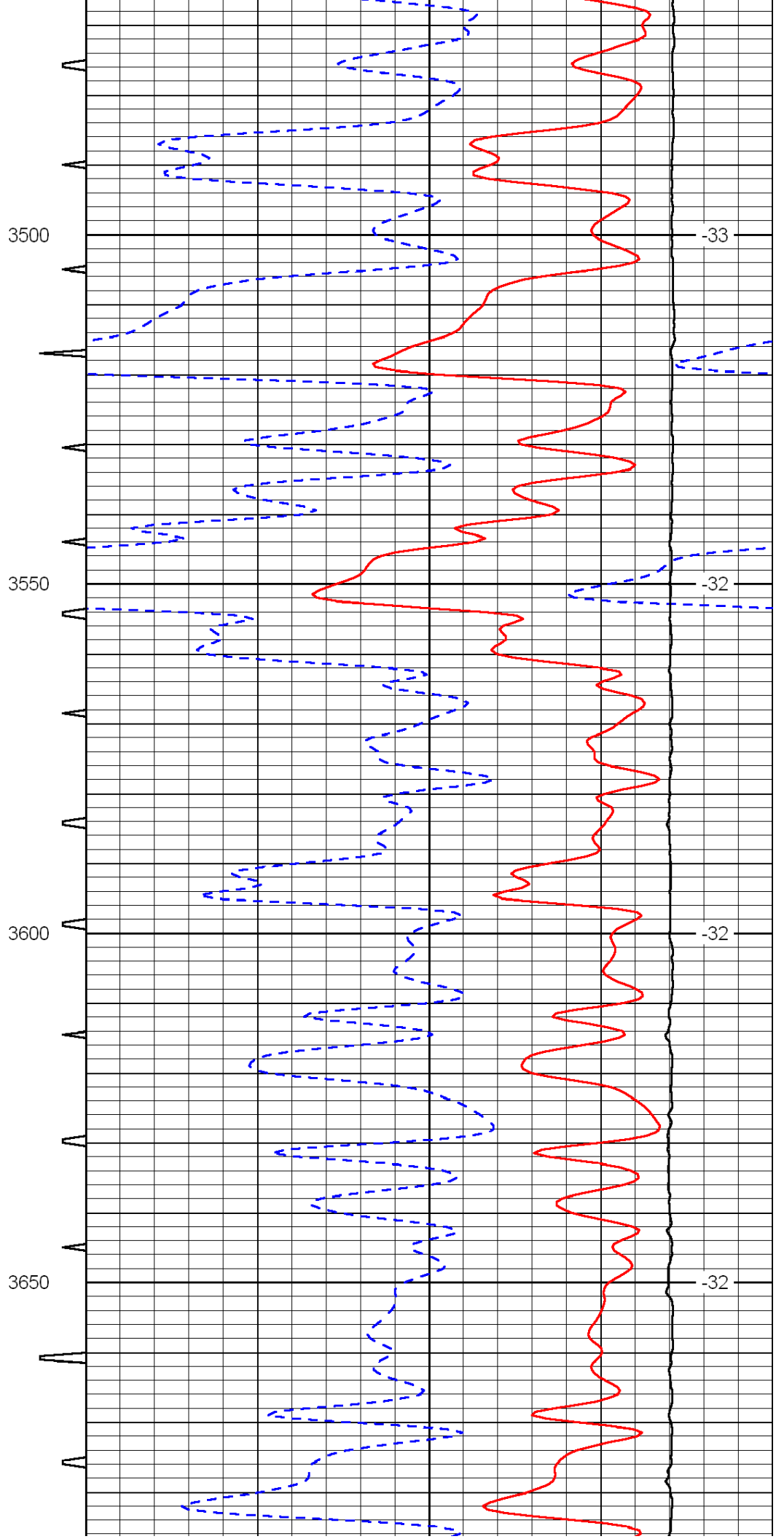
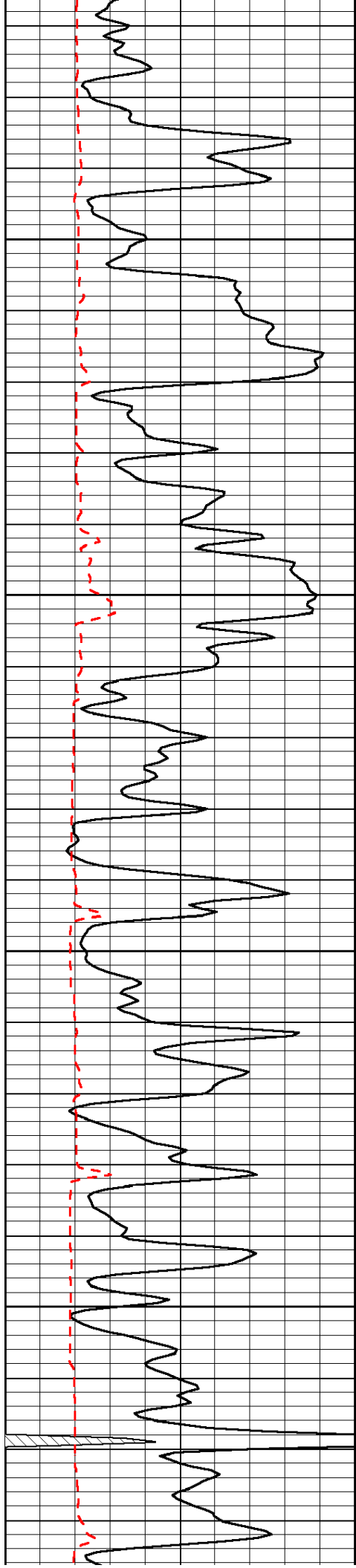


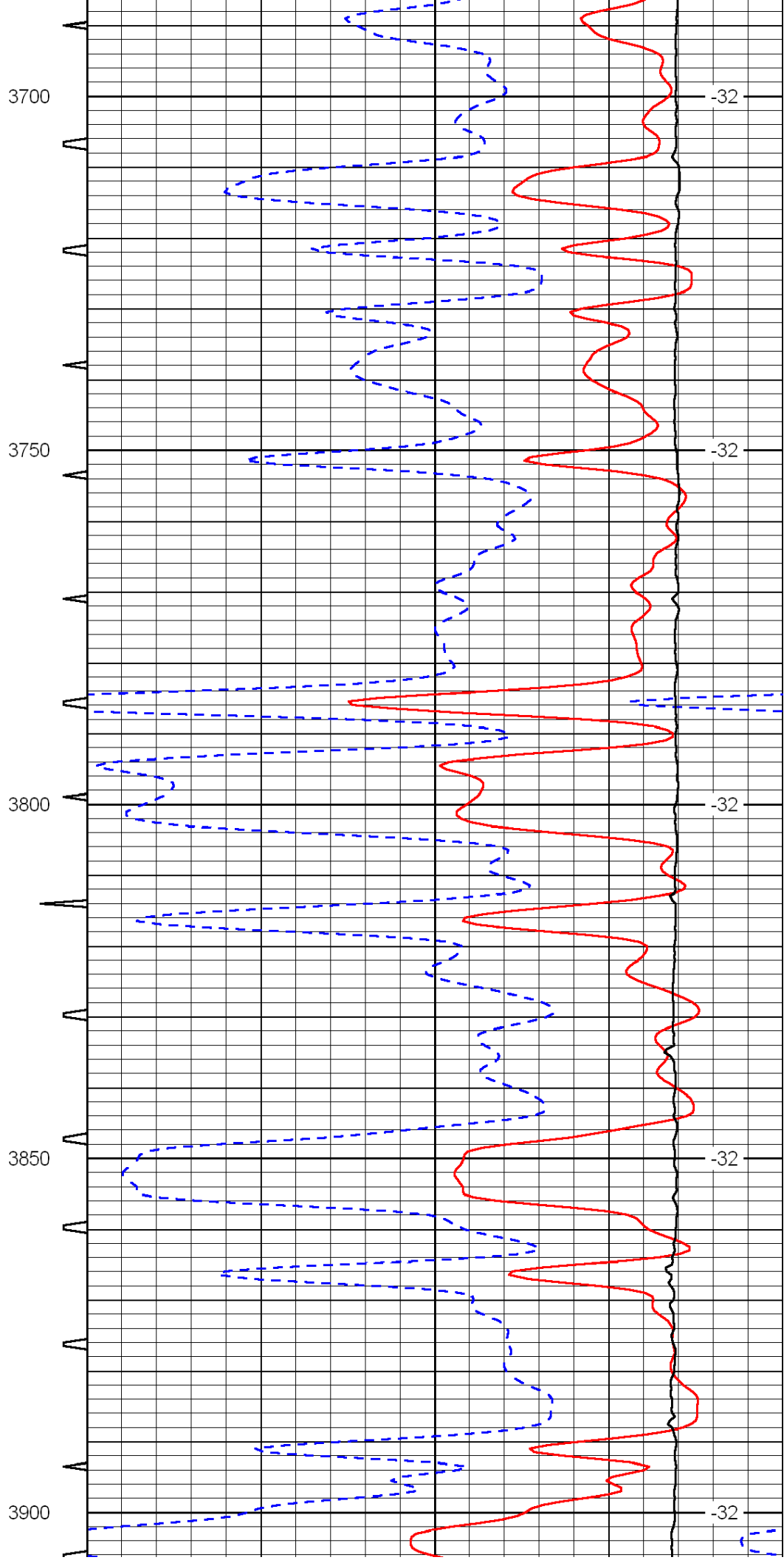
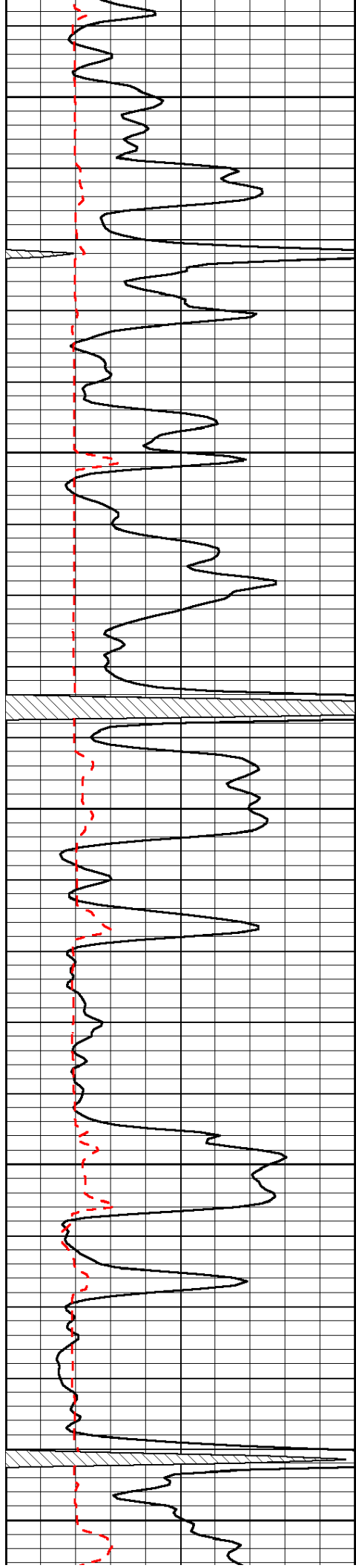


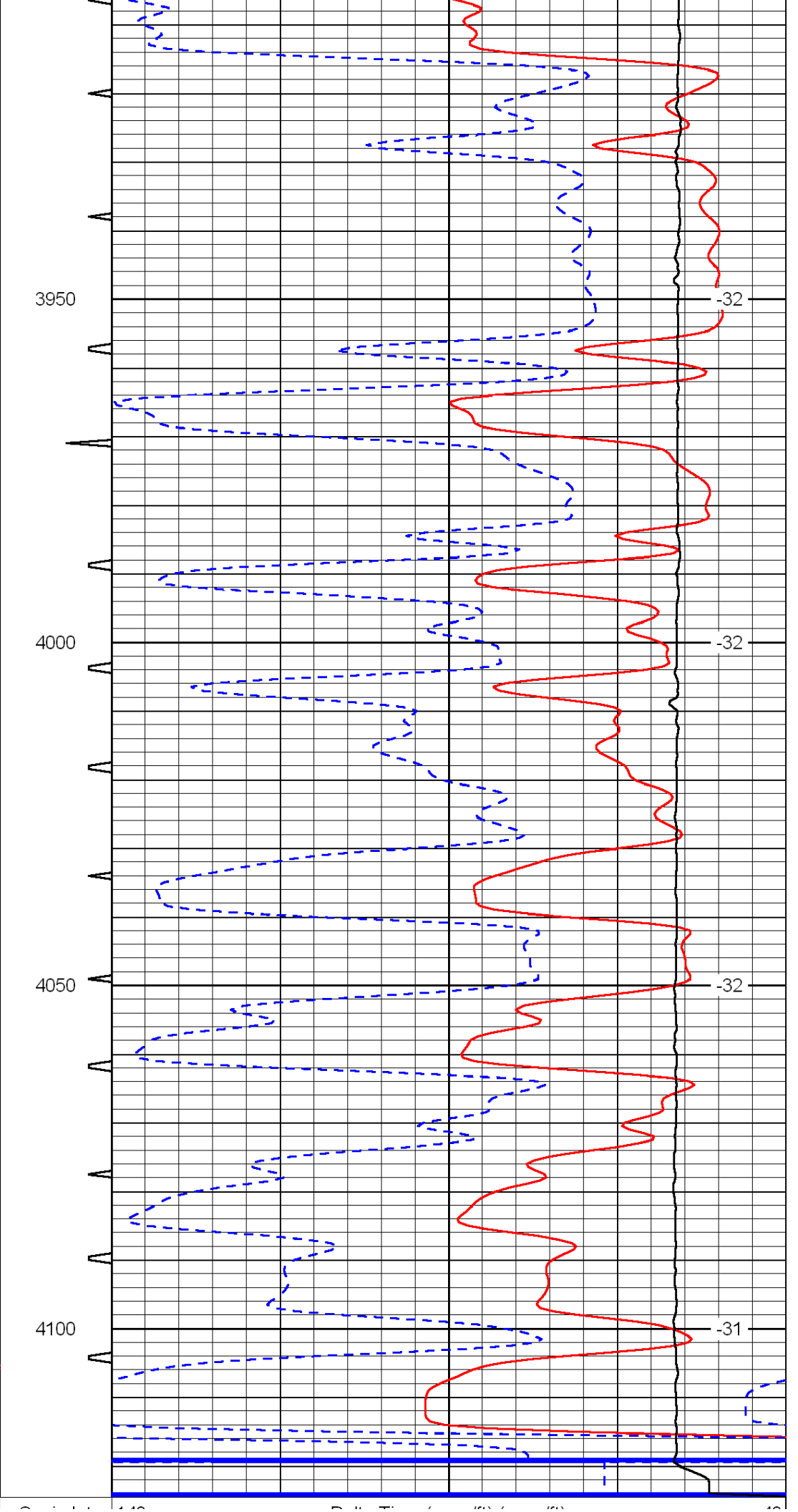
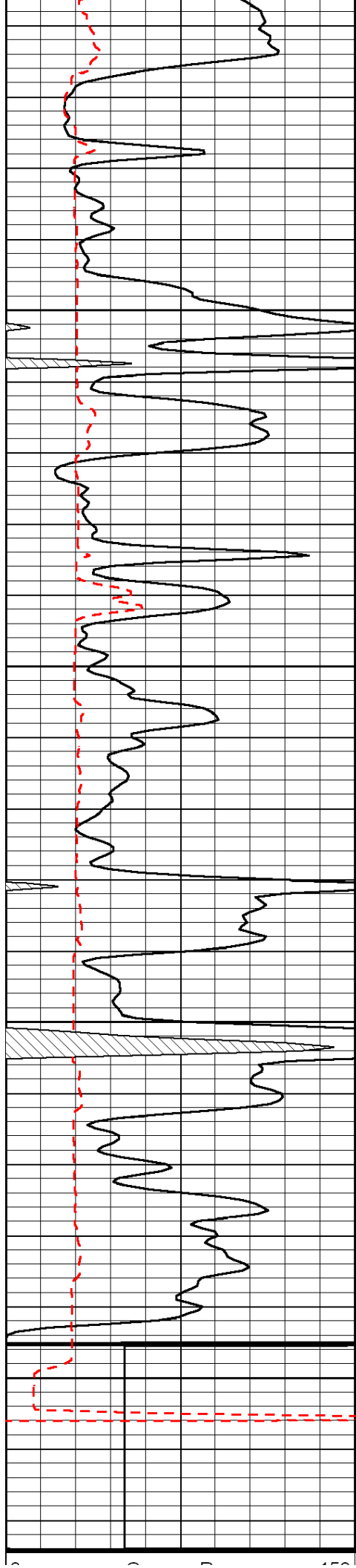












0	Gamma Ray	150	Sonic Int	140	Delta Time (usec/ft) (usec/ft)	40
150	Gamma Ray	300	5 (msec) 0	30	SPOR (pu)	-10
6	Caliper (in)	16		15000	LTEN (lb) (lb)	0
						LSPD (ft/min)