



# Microresistivity Log

**DIGITAL LOG** (785) 625-3858

API No. 15-195-22,646-00-00	Company <b>Murfin Drilling Company, Inc.</b>	Well <b>Hendricks No. 1-16</b>	Field <b>Wildcat</b>
	County <b>Trego</b>	State <b>Kansas</b>	
	Location <b>2000' FNL &amp; 1220' FEL</b>		Other Services CNL/CDL DIL/BHCS
	Sec: <b>16</b>	Twp: <b>12S</b>	Rge: <b>24W</b>
Permanent Datum Log Measured From Drilling Measured From	Ground Level Kelly Bushing Kelly Bushing	Elevation 2453 5 Ft. Above Perm. Datum	K.B. 2458 D.F. G.L. 2453

Date	03/28/2010
Run Number	Two
Depth Driller	4120
Depth Logger	4119
Bottom Logged Interval	4118
Top Log Interval	3450
Casing Driller	8.625 @ 219
Casing Logger	216
Bit Size	7.875
Type Fluid in Hole	Chemical
Salinity, ppm CL	2,100
Density / Viscosity	9.0   54
pH / Fluid Loss	11.5   6.4
Source of Sample	Flowline
Rm @ Meas. Temp	.27 @ 58
Rmf @ Meas. Temp	.20 @ 58
Rmc @ Meas. Temp	.36 @ 58
Source of Rmf / Rmc	Charts
Rm @ BHT	.13 @ 119
Operating Rig Time	4 1/2 Hours
Max Rec. Temp. F	119
Equipment Number	17
Location	Hays
Recorded By	Mike Garrison
Witnessed By	Paul Gunzelman

<<< Fold Here >>>

All interpretations are opinions based on inferences from electrical or other measurements and we cannot and do not guarantee the accuracy or correctness of any interpretation, and we shall not, except in the case of gross or willful negligence on our part, be liable or responsible for any loss, costs, damages, or expenses incurred or sustained by anyone resulting from any interpretation made by any of our officers, agents or employees. These interpretations are also subject to our general terms and conditions set out in our current Price Schedule.

**Comments**

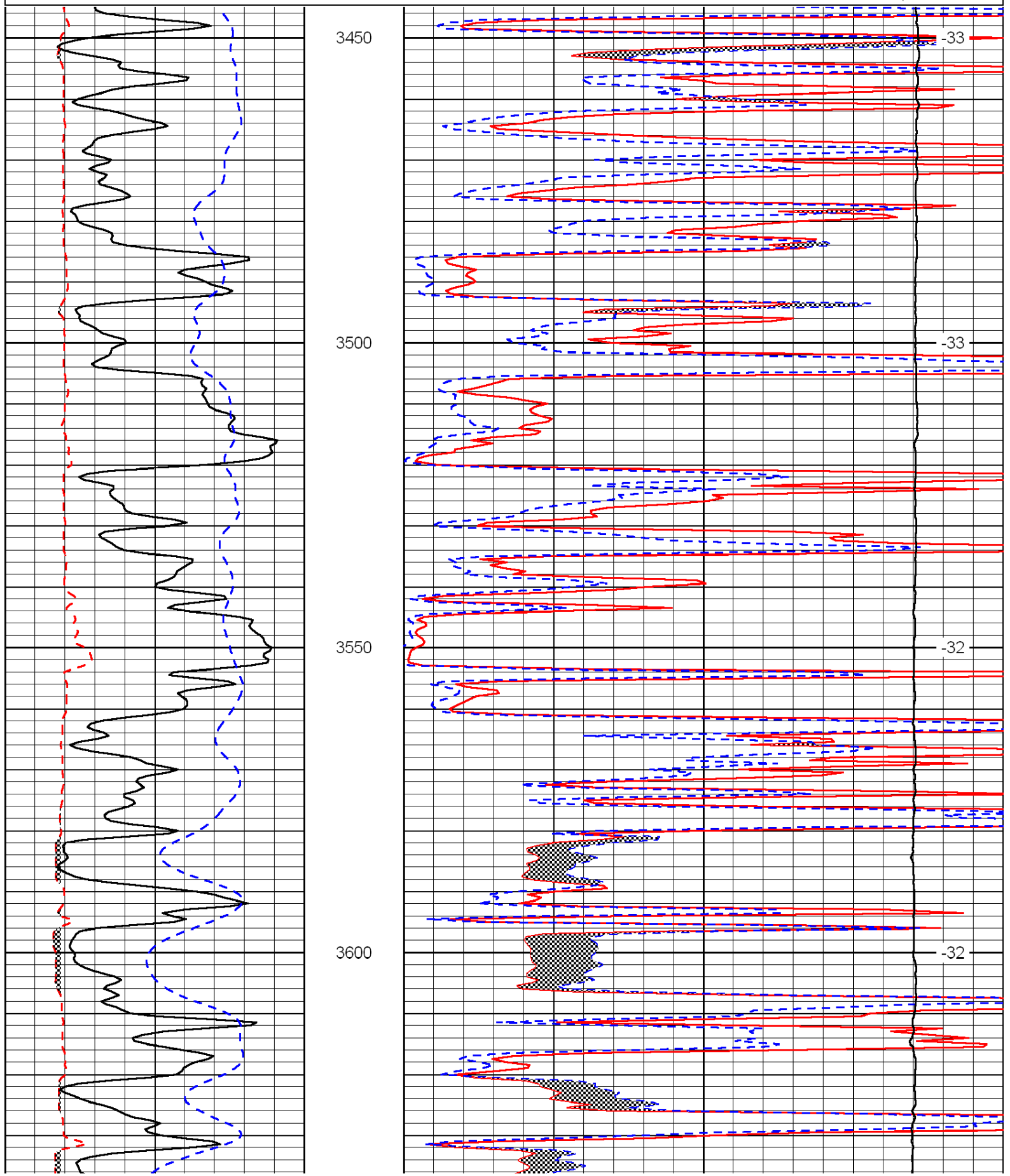
Thank you for using Log-Tech, Inc.  
(785) 625-3858

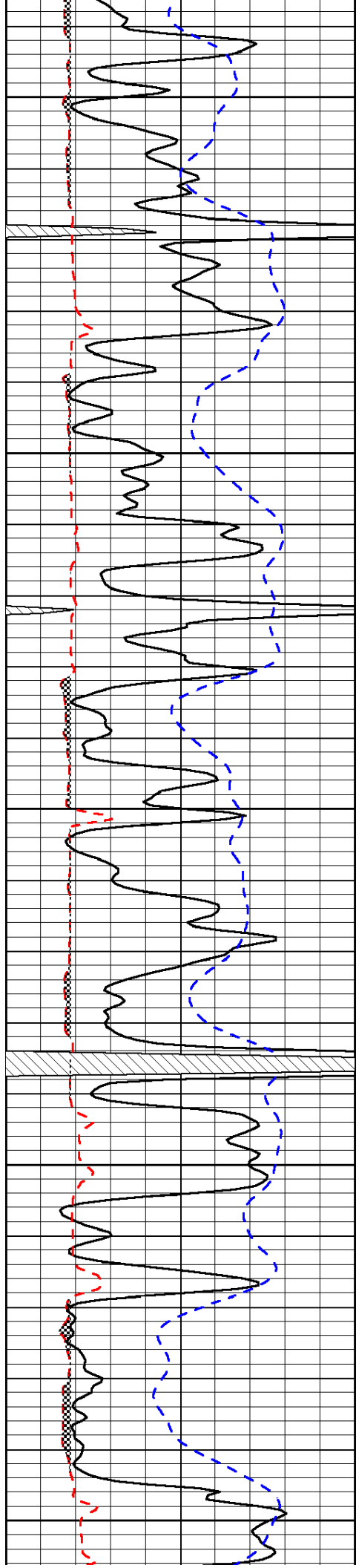
Voda Exit, 1/2 South, 2 East, 1/2 South, West Into

0	Gamma Ray	150
6	Micro Log Caliper (in)	16
-200	SP (MV)	0

0	Micro Inverse 1 X 1 (Ohm-m)	40
0	Micro Normal 2" (Ohm-m)	40
15000	Line Weight (lb)	0

LSPD  
(ft/min)





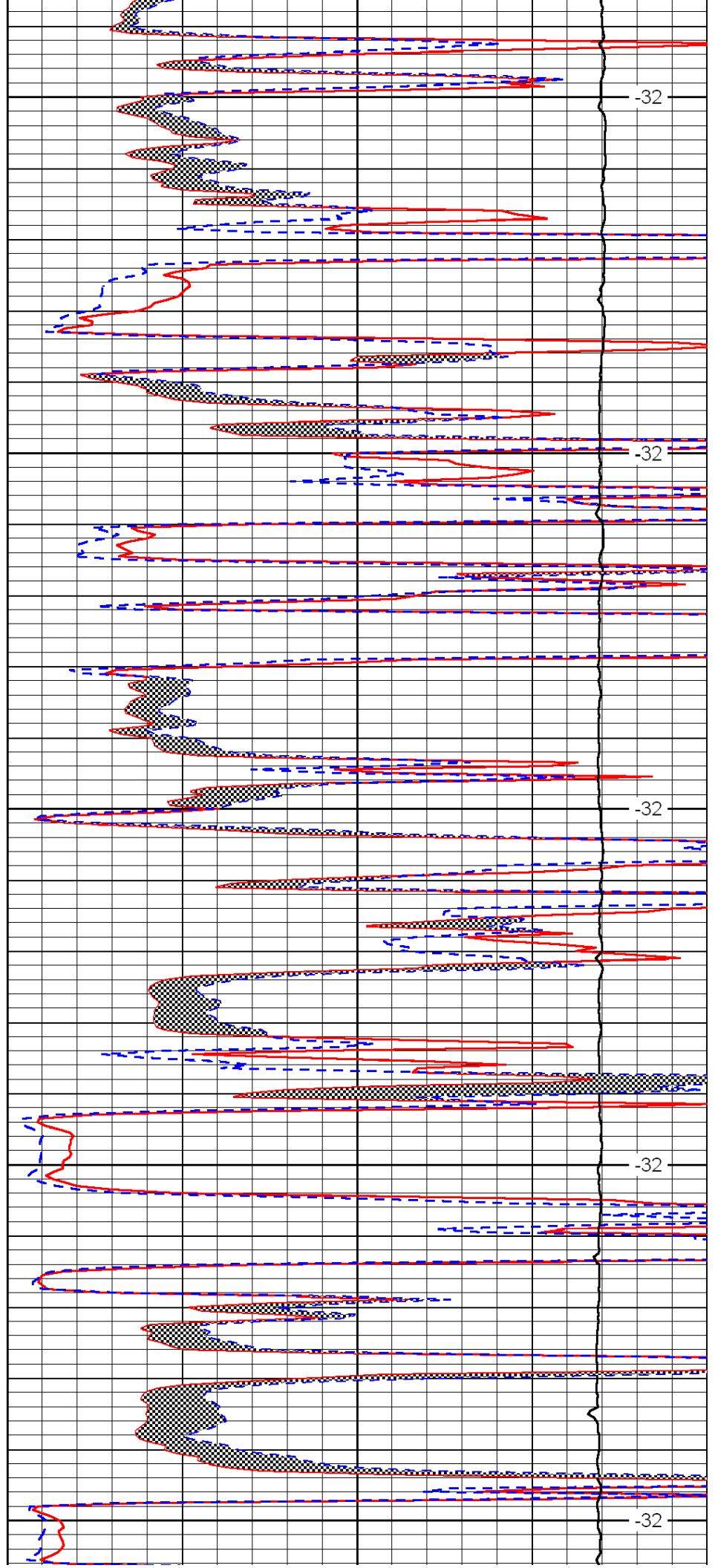
3650

3700

3750

3800

3850



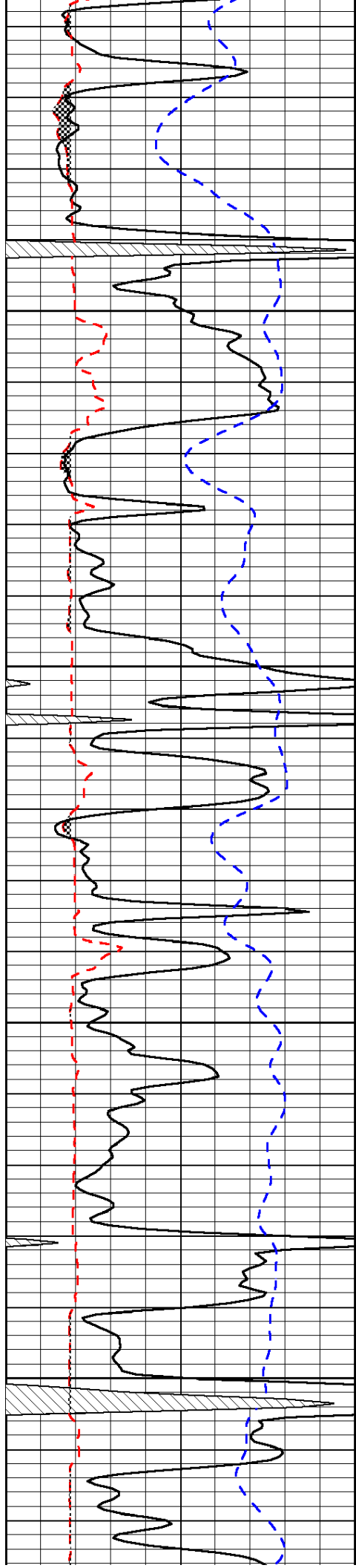
-32

-32

-32

-32

-32

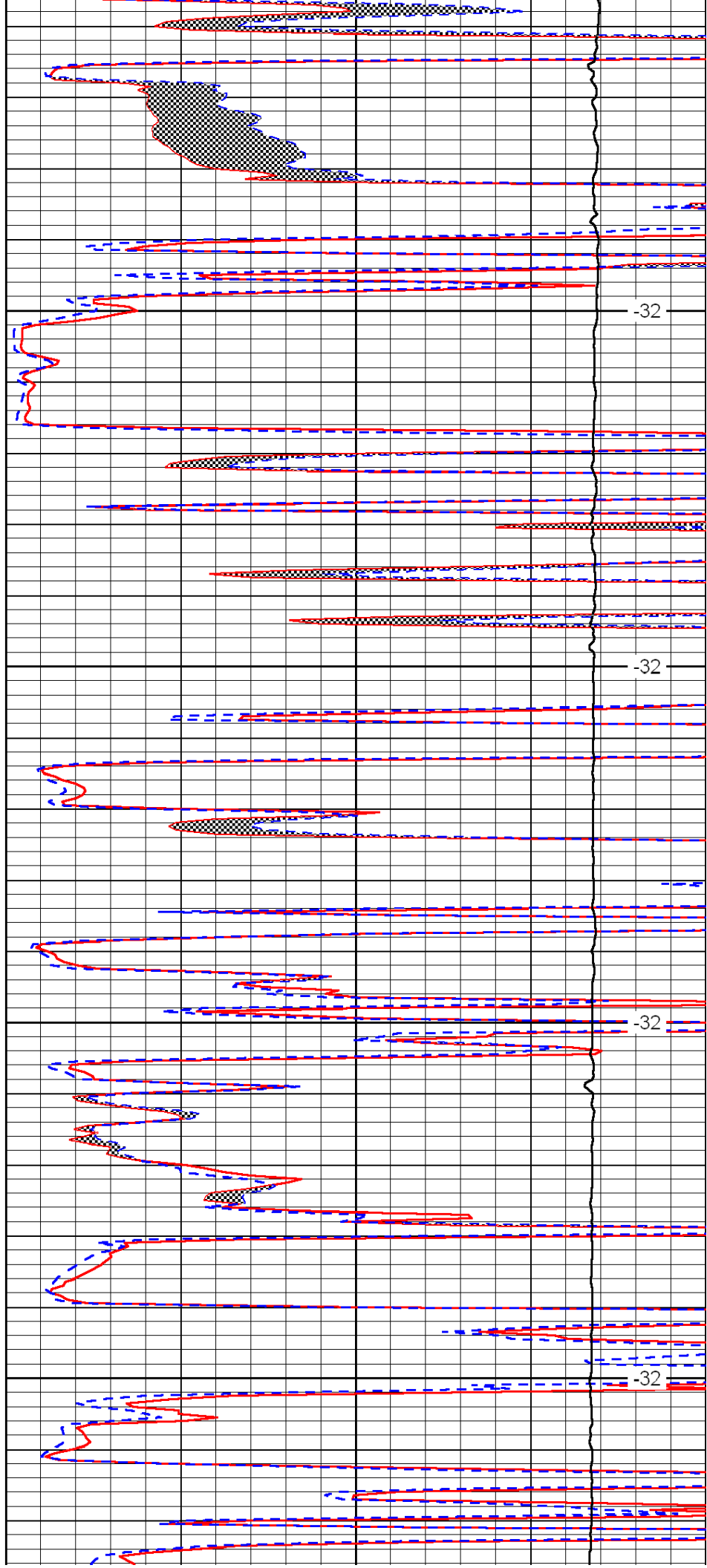


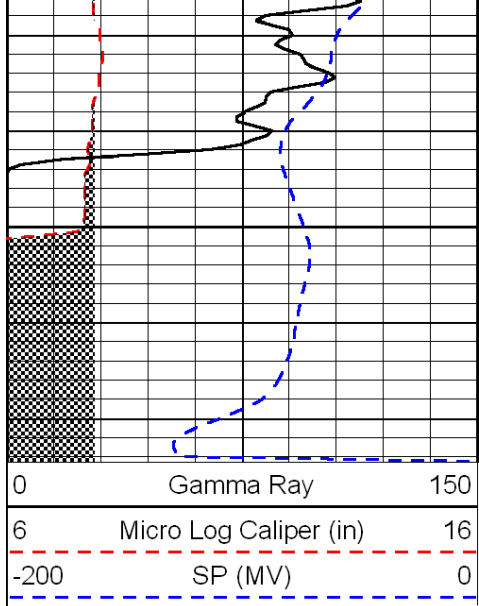
3900

3950

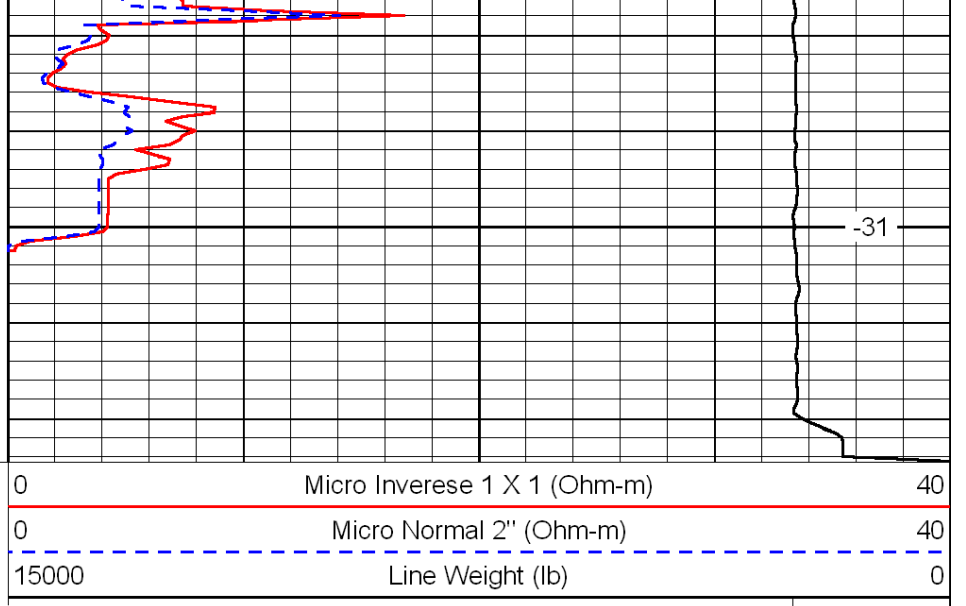
4000

4050





4100



-31

LSPD  
(ft/min)