



**SUPERIOR  
Hays,  
Kansas**

**MICRO  
LOG**

Company MULL DRILLING COMPANY, INC.  
Well KENT "A" #1-28  
Field  
County LANE  
State KANSAS

Company MULL DRILLING COMPANY, INC.  
Well KENT "A" #1-28  
Field  
County LANE State KANSAS

Location: API #: 15-101-22263  
2158' FSL & 2582' FEL  
SEC 28 TWP 17S RGE 29W  
Permanent Datum GROUND LEVEL Elevation 2811  
Log Measured From KELLY BUSHING 5' A.G.L.  
Drilling Measured From KELLY BUSHING  
Other Services  
CDL/CNL  
SONIC/DIL  
Elevation  
K.B. 2816  
D.F.  
G.L. 2811

Date	12-4-10
Run Number	TW0
Depth Driller	4650
Depth Logger	4652
Bottom Logged Interval	4634
Top Log Interval	3700
Casing Driller	226
Casing Logger	226
Bit Size	7.875
Type Fluid in Hole	CHEMICAL MUD
Density / Viscosity	9.3 / 53
pH / Fluid Loss	9.5 / 6.4
Source of Sample	FLOWLINE
Rm @ Meas. Temp	1.50 @ 73F
Rmf @ Meas. Temp	1.13 @ 73F
Rmc @ Meas. Temp	1.80 @ 73F
Source of Rmf / Rmc	MEASURED
Rm @ BHT	.900 @ 121F
Time Circulation Stopped	2 HOURS
Time Logger on Bottom	1:15 P.M.
Maximum Recorded Temperature	121F
Equipment Number	860
Location	HAYS, KS.
Recorded By	RUPP
Witnessed By	KEVIN KESSLER

<<< Fold Here >>>

All interpretations are opinions based on inferences from electrical or other measurements and we cannot and do not guarantee the accuracy or correctness of any interpretation, and we shall not, except in the case of gross or willful negligence on our part, be liable or responsible for any loss, costs, damages, or expenses incurred or sustained by anyone resulting from any interpretation made by any of our officers, agents or employees. These interpretations are also subject to our general terms and conditions set out in our current Price Schedule.

Comments

SUPERIOR WELL SERVICES  
785-628-6395  
THANK YOU FOR YOUR BUSINESS  
DIRECTIONS: DIGHTON, 4N TO RD. #190, 2W, 1/2N, W INTO.



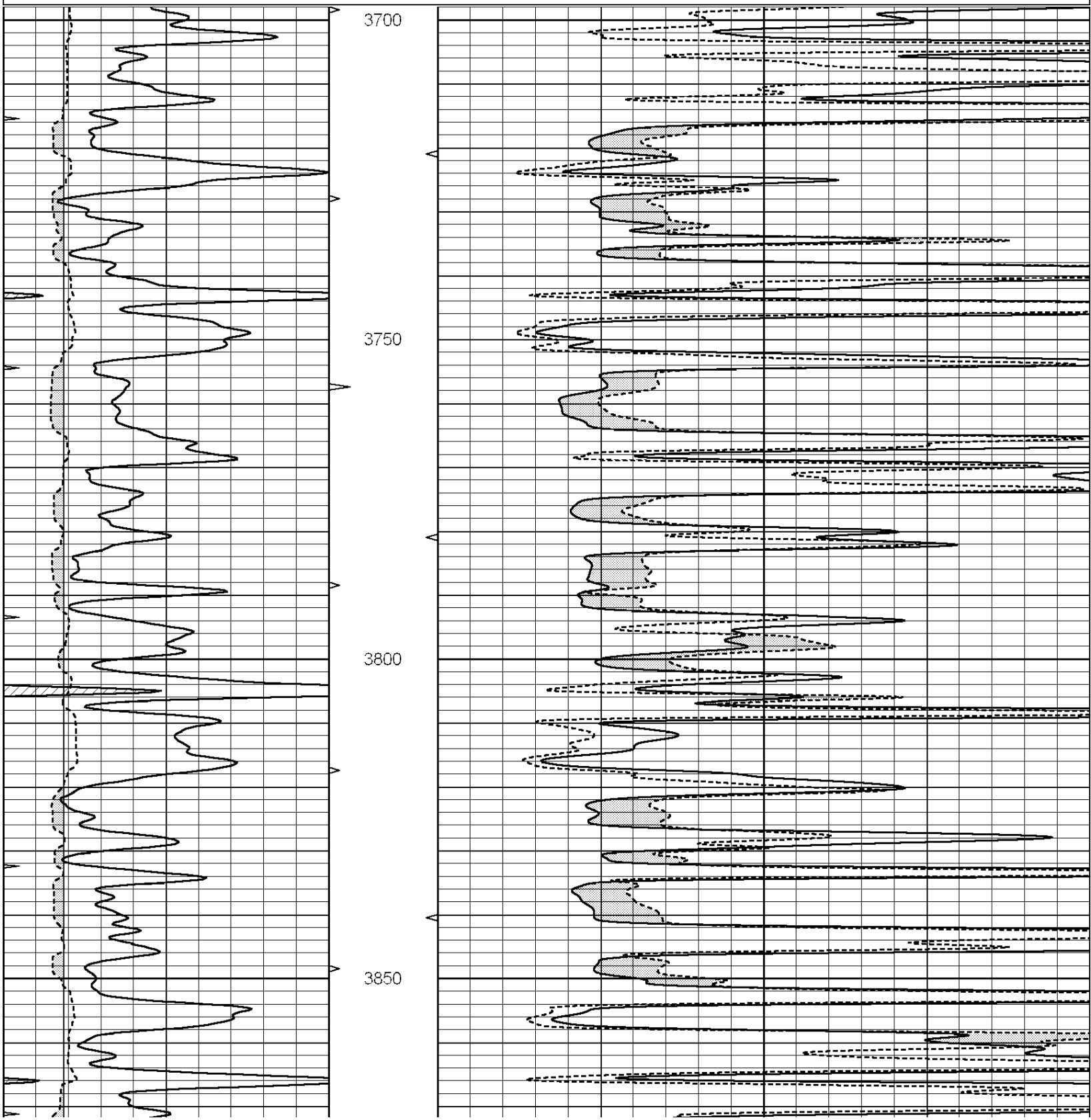
SUPERIOR  
Hays,  
Kansas

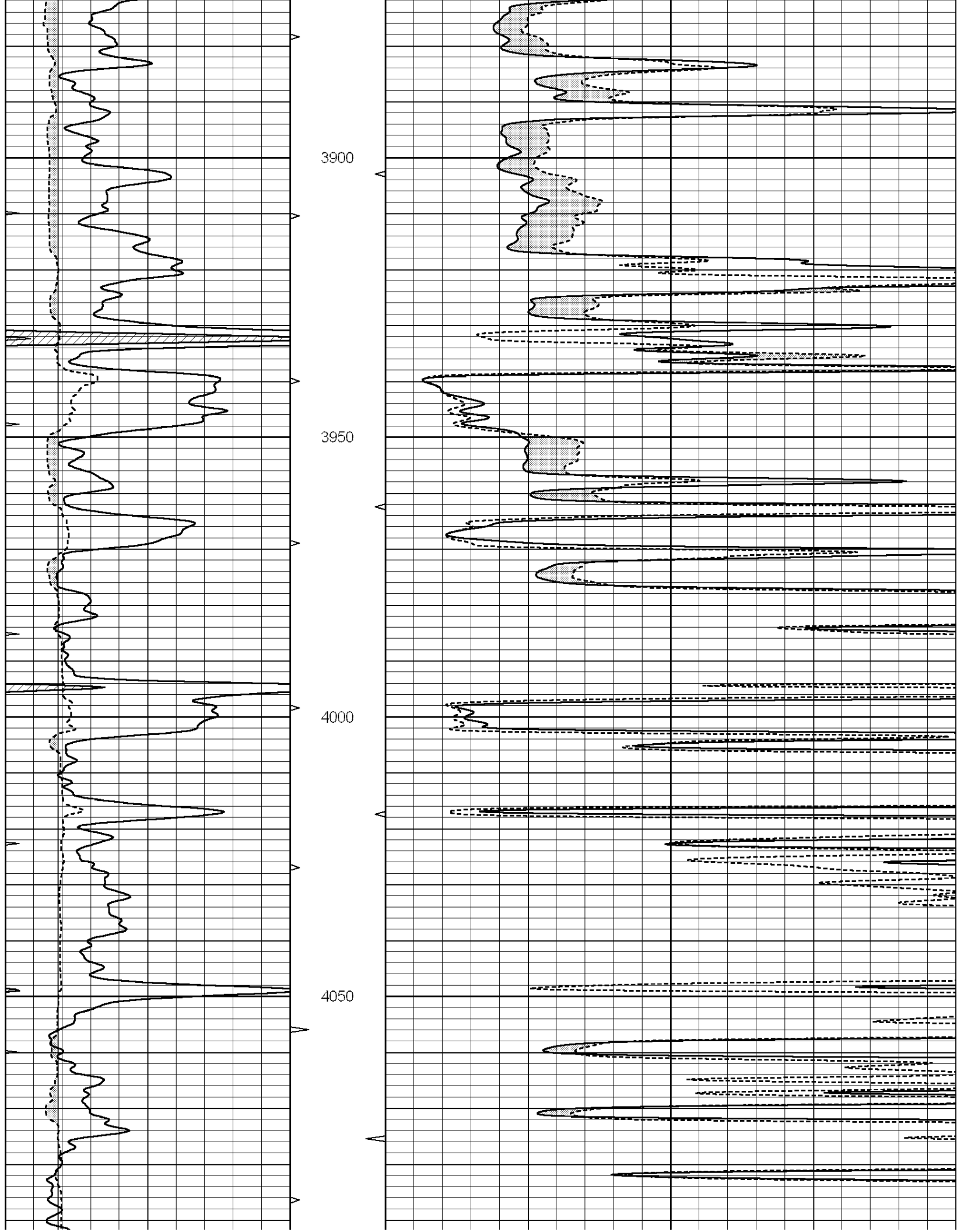
**MAIN SECTION**

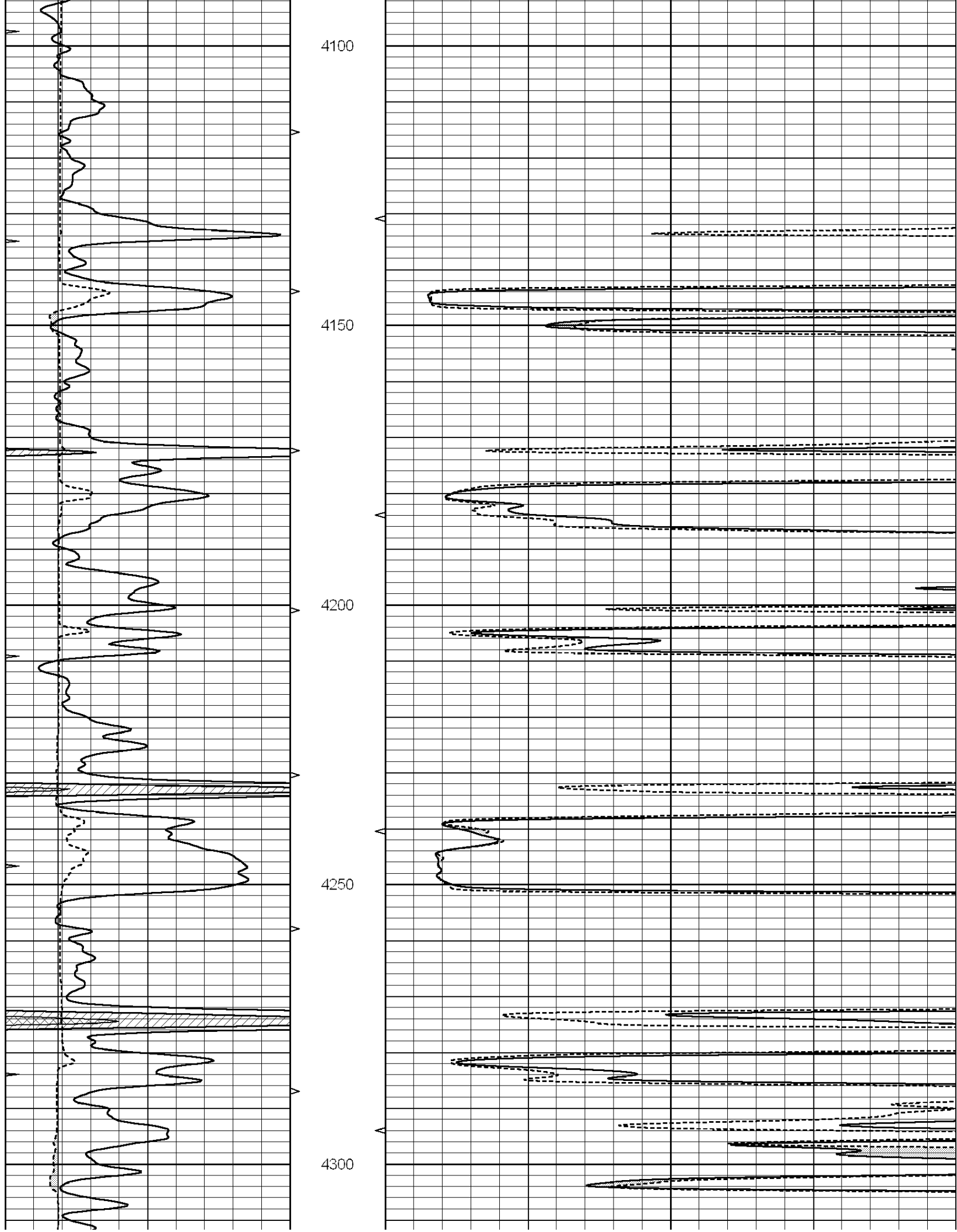
Database File: 006304ddn.db  
 Dataset Pathname: pass5.1A  
 Presentation Format: micro  
 Dataset Creation: Sat Dec 04 07:00:05 2010  
 Charted by: Depth in Feet scaled 1:240

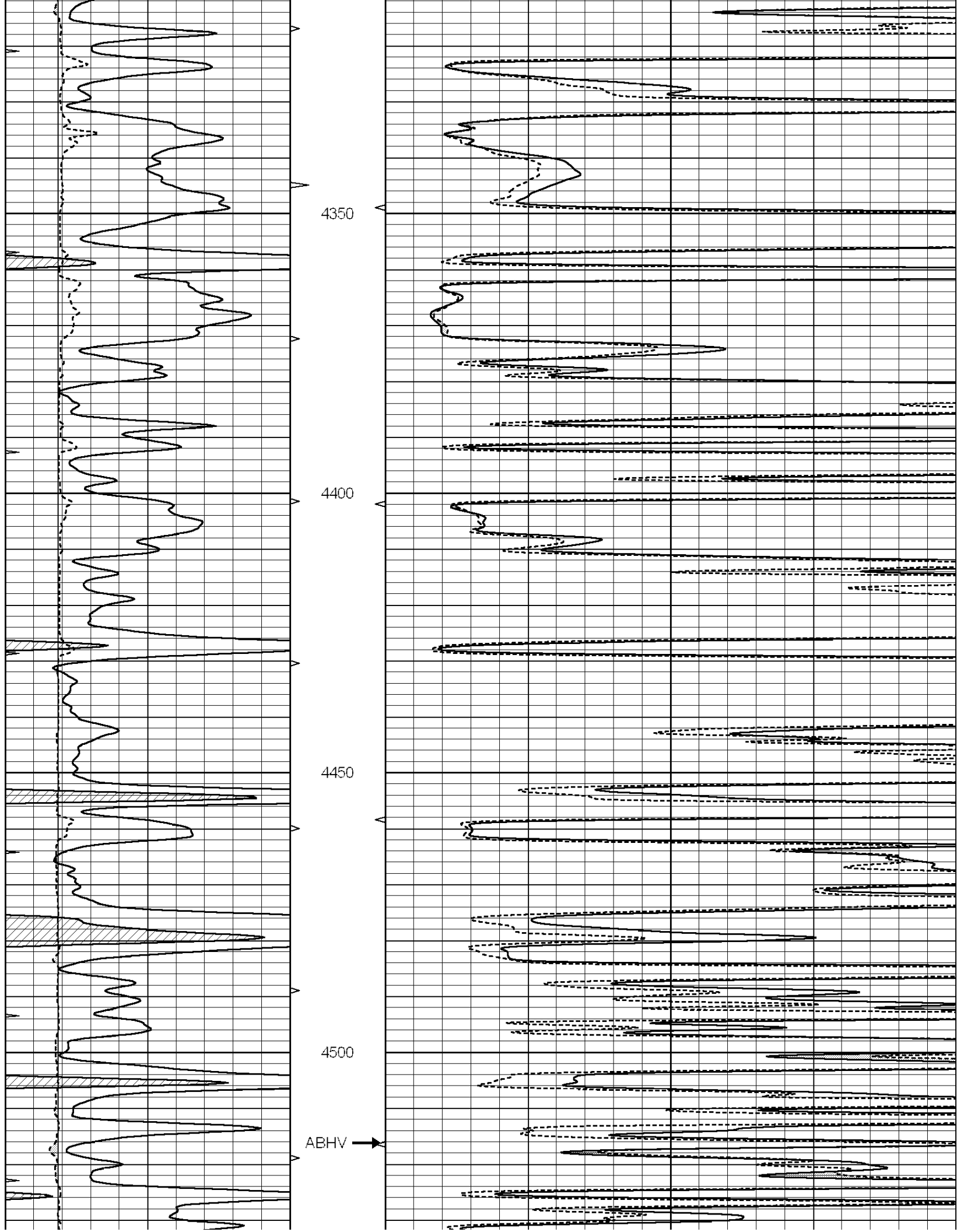
0	GAMMA RAY (GAPI)	150
6	CALIPER (in)	16
0	MINMK	20

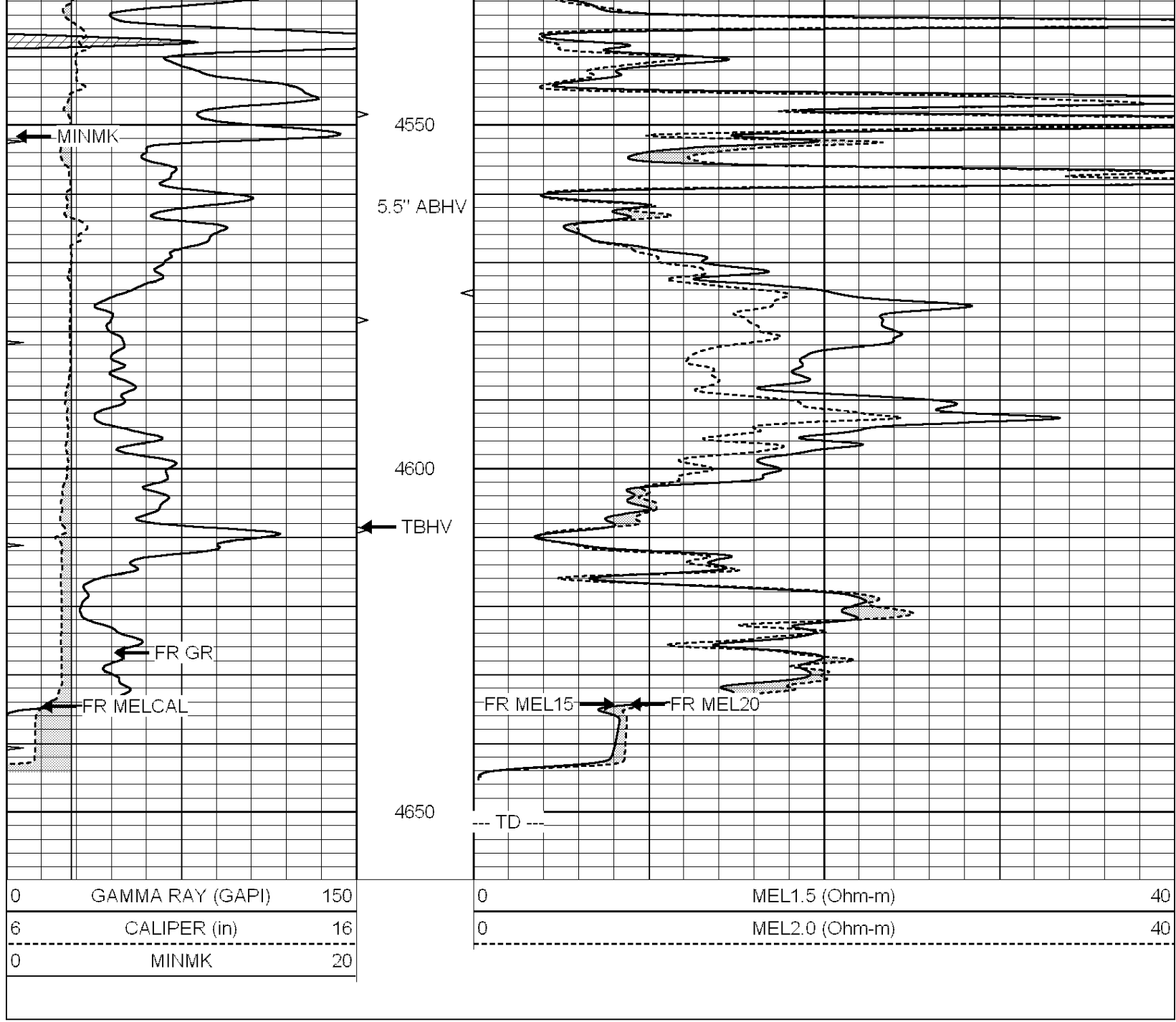
0	MEL1.5 (Ohm-m)	40
0	MEL2.0 (Ohm-m)	40











0	GAMMA RAY (GAPI)	150
6	CALIPER (in)	16
0	MINMK	20

0	MEL1.5 (Ohm-m)	40
0	MEL2.0 (Ohm-m)	40



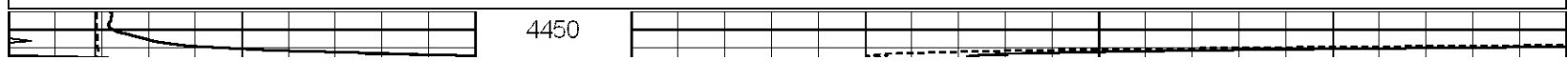
SUPERIOR  
Hays,  
Kansas

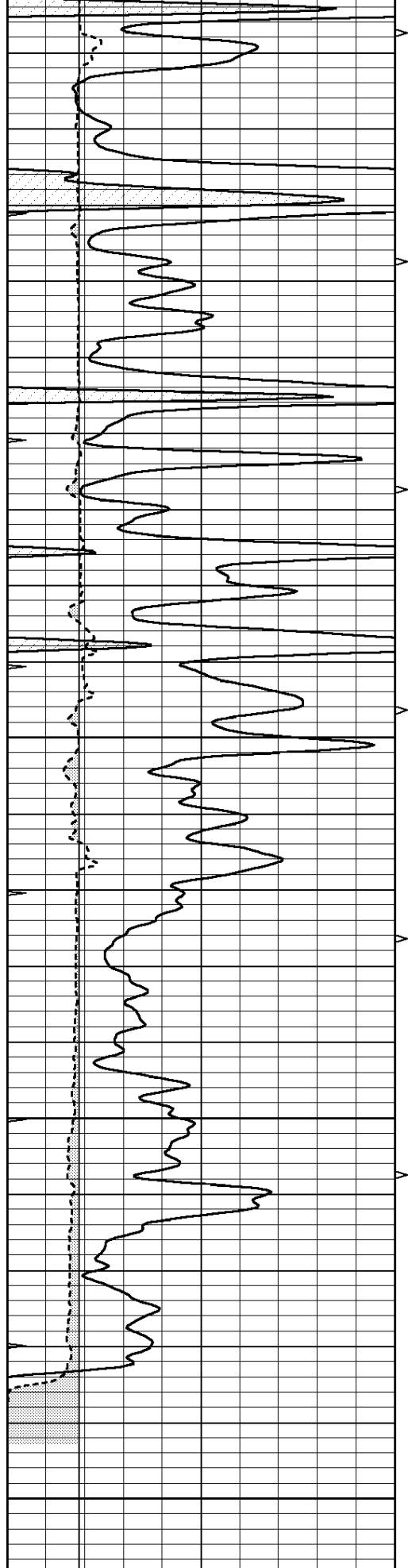
# REPEAT SECTION

Database File: 006304ddn.db  
 Dataset Pathname: pass4.1  
 Presentation Format: micro  
 Dataset Creation: Sat Dec 04 07:28:03 2010 by Calc Open-Cased 090629  
 Charted by: Depth in Feet scaled 1:240

0	GAMMA RAY (GAPI)	150
6	CALIPER (in)	16
0	MINMK	20

0	MEL1.5 (Ohm-m)	40
0	MEL2.0 (Ohm-m)	40





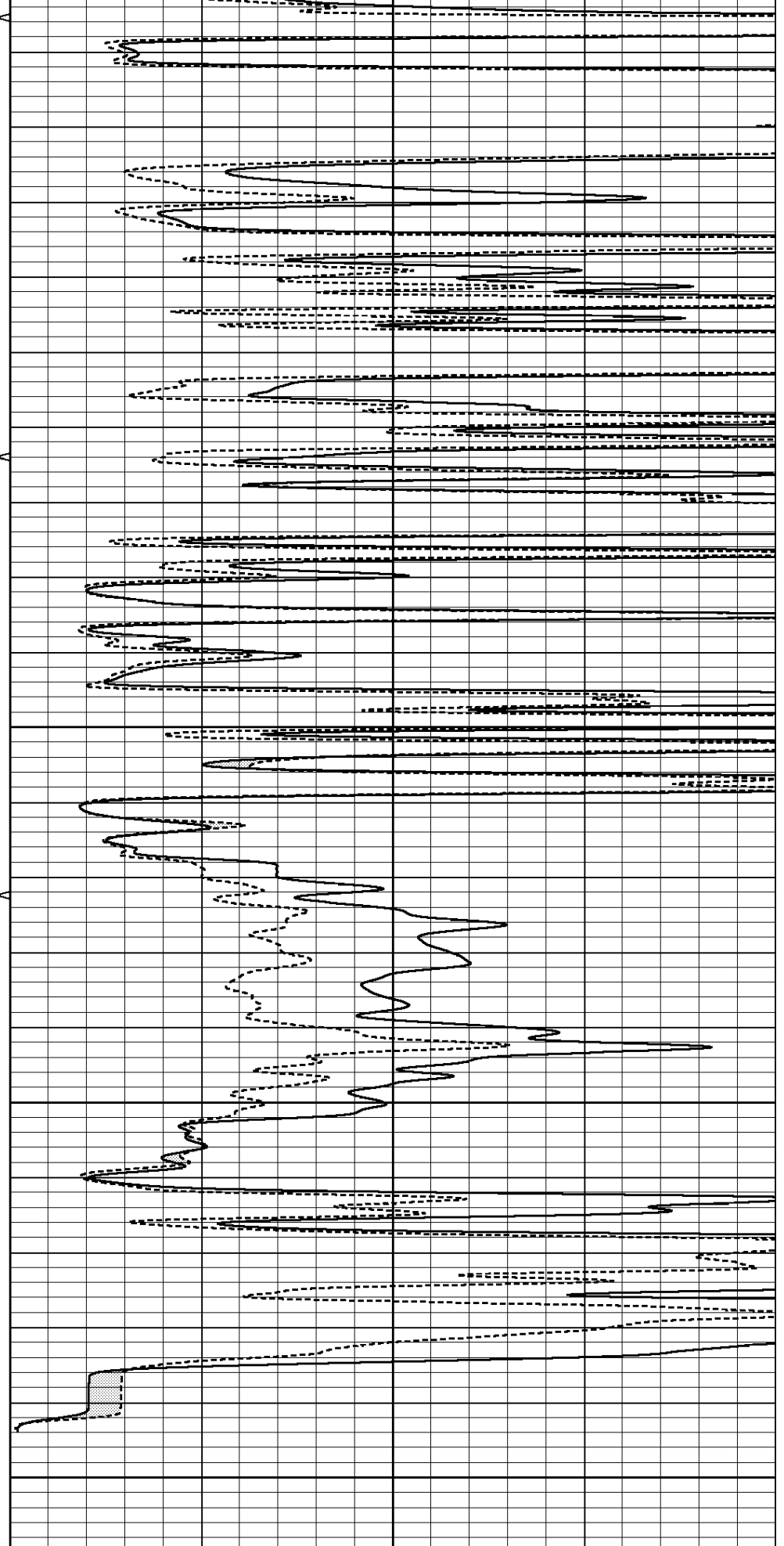
4500

4550

4600

4650

0	GAMMA RAY (GAPI)	150
6	CALIPER (in)	16
0	MINMK	20



0	MEL1.5 (Ohm-m)	40
0	MEL2.0 (Ohm-m)	40

Calibration Report

Database File: 006304ddn.db  
 Dataset Pathname: pass5.1A  
 Dataset Creation: Sat Dec 04 07:00:05 2010

MICRO Calibration Report

Serial Number: Micro1  
 Tool Model: ProbeL  
 Performed: Sat Dec 04 04:59:39 2010

Caliper Calibration: Gain=3.275      Offset=-0.458

	Low Cal	High Cal
References	7.000	14.000
Readings	2.277	4.415

1.5" Calibration: Gain=40.000      Offset=0.300

	Low Cal	High Cal
References	0.000	20.000
Readings	0.003	0.844

2" Calibration: Gain=35.000      Offset=0.400

	Low Cal	High Cal
References	0.000	20.000
Readings	0.028	0.817

Gamma Ray Calibration Report

Serial Number: GR5  
 Tool Model: OPEN  
 Performed: Sat Dec 04 05:59:47 2010

Calibrator Value: 1.0      GAPI

Background Reading:	0.0	cps
Calibrator Reading:	1.0	cps

Sensitivity: 0.6400      GAPI/cps