



**SUPERIOR
Hays,
Kansas**

**SONIC
LOG**

Company MULL DRILLING COMPANY, INC.
Well KENT "A" #1-28
Field
County LANE
State KANSAS

Company MULL DRILLING COMPANY, INC.
Well KENT "A" #1-28
Field
County LANE State KANSAS

Location: API #: 15-101-22263
2158' FSL & 2582' FEL
SEC 28 TWP 17S RGE 29W
Permanent Datum GROUND LEVEL Elevation 2811
Log Measured From KELLY BUSHING 5' A.G.L.
Drilling Measured From KELLY BUSHING
Other Services
CDL/CNL
MICRO/DIL
Elevation
K.B. 2816
D.F.
G.L. 2811

Date	12-4-10
Run Number	TW0
Depth Driller	4650
Depth Logger	4652
Bottom Logged Interval	4644
Top Log Interval	220
Casing Driller	226
Casing Logger	226
Bit Size	7.875
Type Fluid in Hole	CHEMICAL MUD
Density / Viscosity	9.3 / 53
pH / Fluid Loss	9.5 / 6.4
Source of Sample	FLOWLINE
Rm @ Meas. Temp	1.50 @ 73F
Rmf @ Meas. Temp	1.13 @ 73F
Rmc @ Meas. Temp	1.80 @ 73F
Source of Rmf / Rmc	MEASURED
Rm @ BHT	.900 @ 121F
Time Circulation Stopped	2 HOURS
Time Logger on Bottom	1:15 P.M.
Maximum Recorded Temperature	121F
Equipment Number	860
Location	HAYS, KS.
Recorded By	RUPP
Witnessed By	KEVIN KESSLER

<<< Fold Here >>>

All interpretations are opinions based on inferences from electrical or other measurements and we cannot and do not guarantee the accuracy or correctness of any interpretation, and we shall not, except in the case of gross or willful negligence on our part, be liable or responsible for any loss, costs, damages, or expenses incurred or sustained by anyone resulting from any interpretation made by any of our officers, agents or employees. These interpretations are also subject to our general terms and conditions set out in our current Price Schedule.

Comments

SUPERIOR WELL SERVICES
 785-628-6395
 THANK YOU FOR YOUR BUSINESS
 DIRECTIONS: DIGHTON, 4N TO RD. #190, 2W, 1/2N, W INTO.

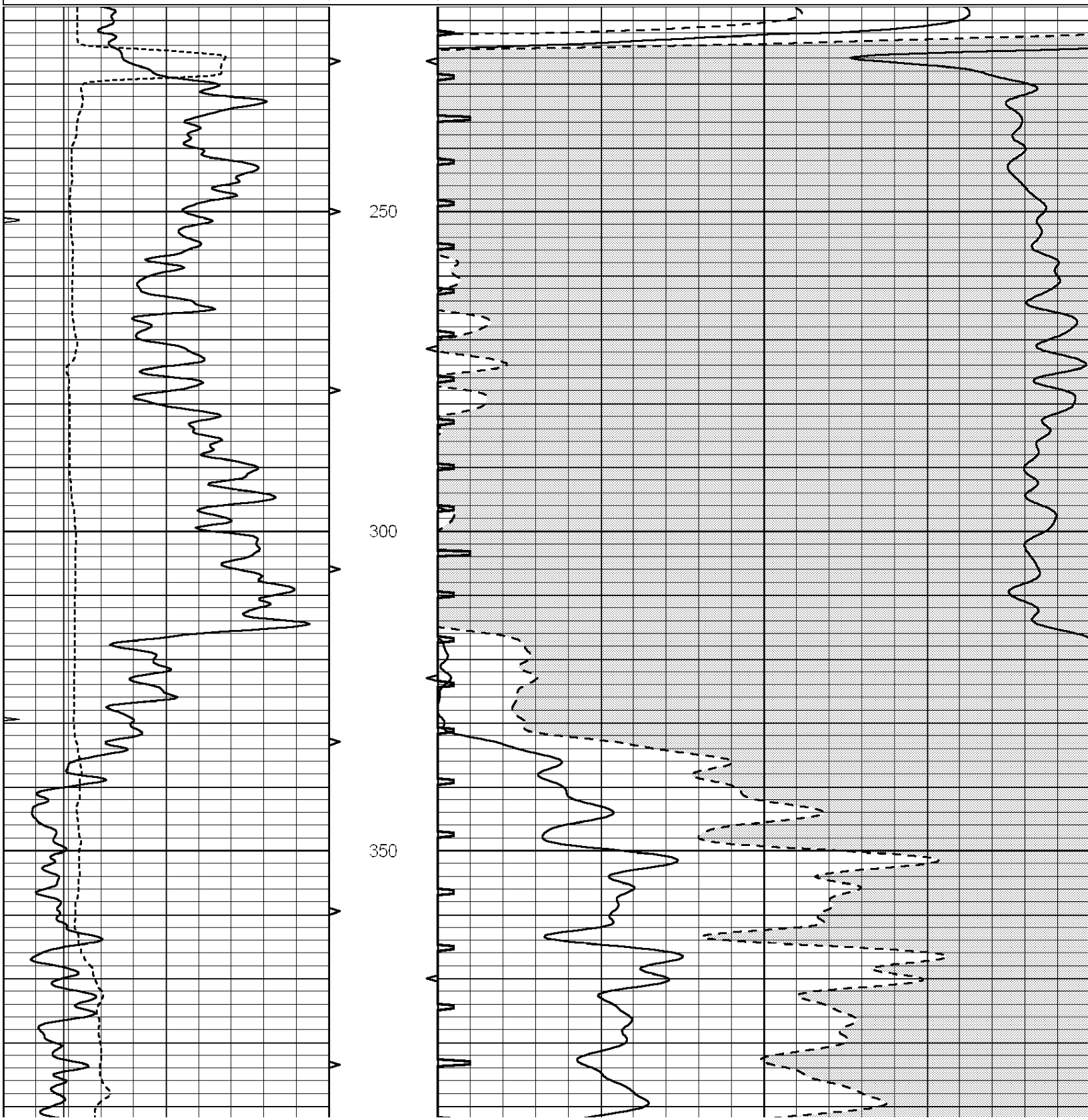


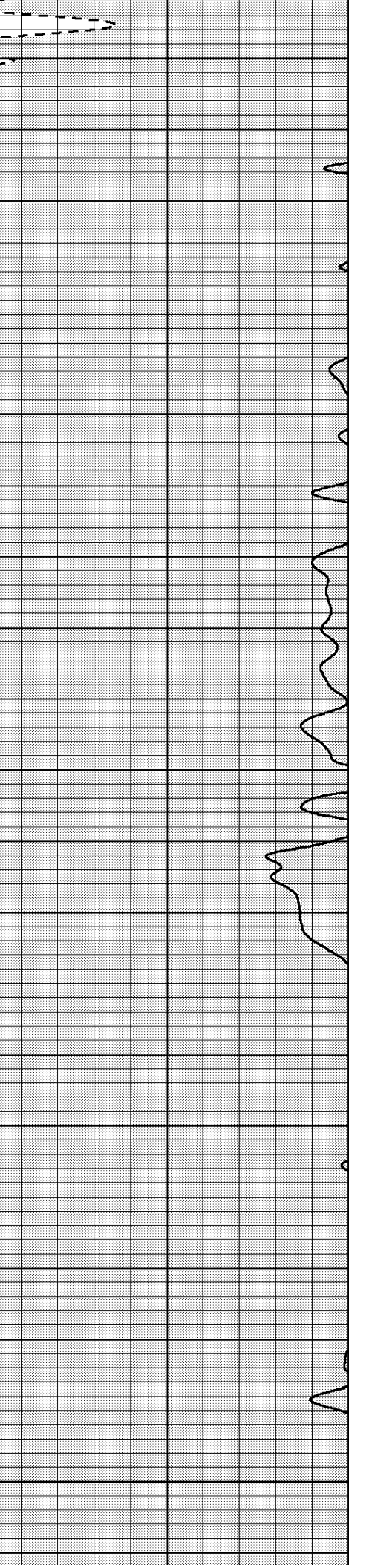
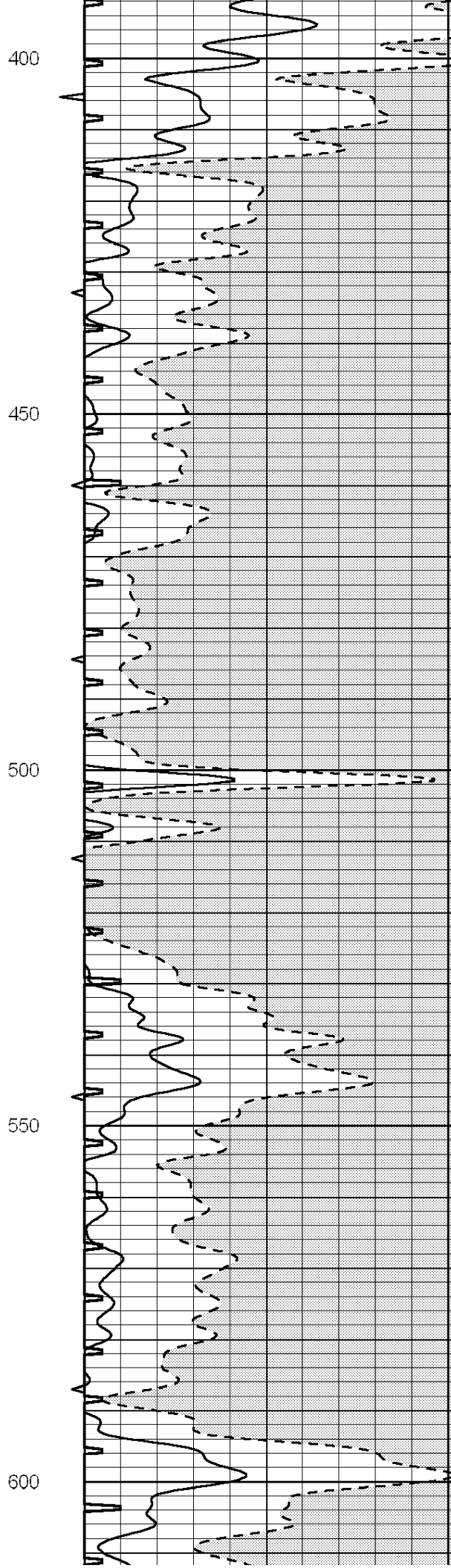
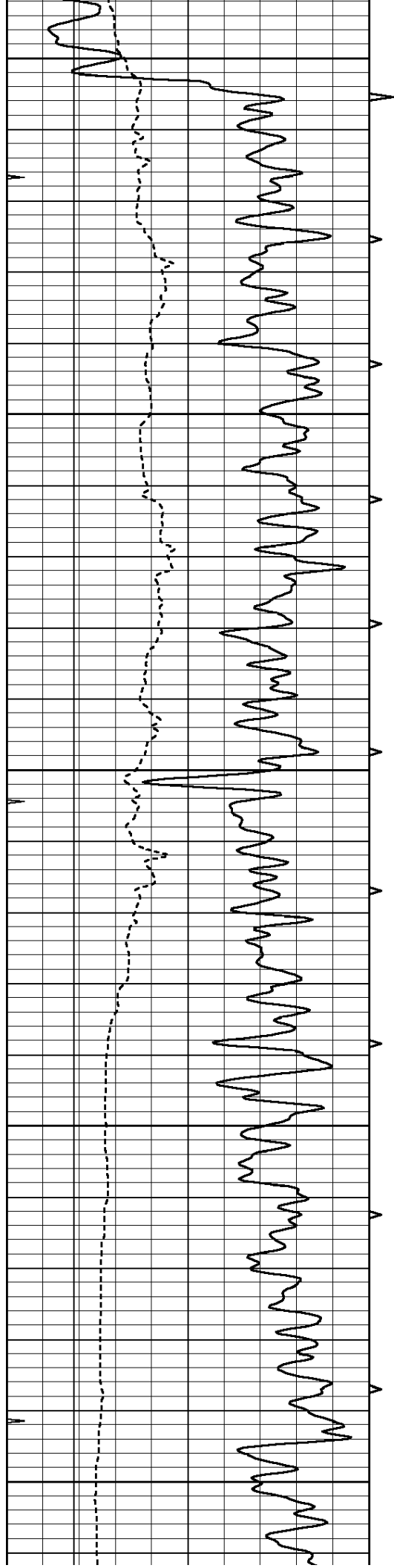
**SUPERIOR
Hays,
Kansas**

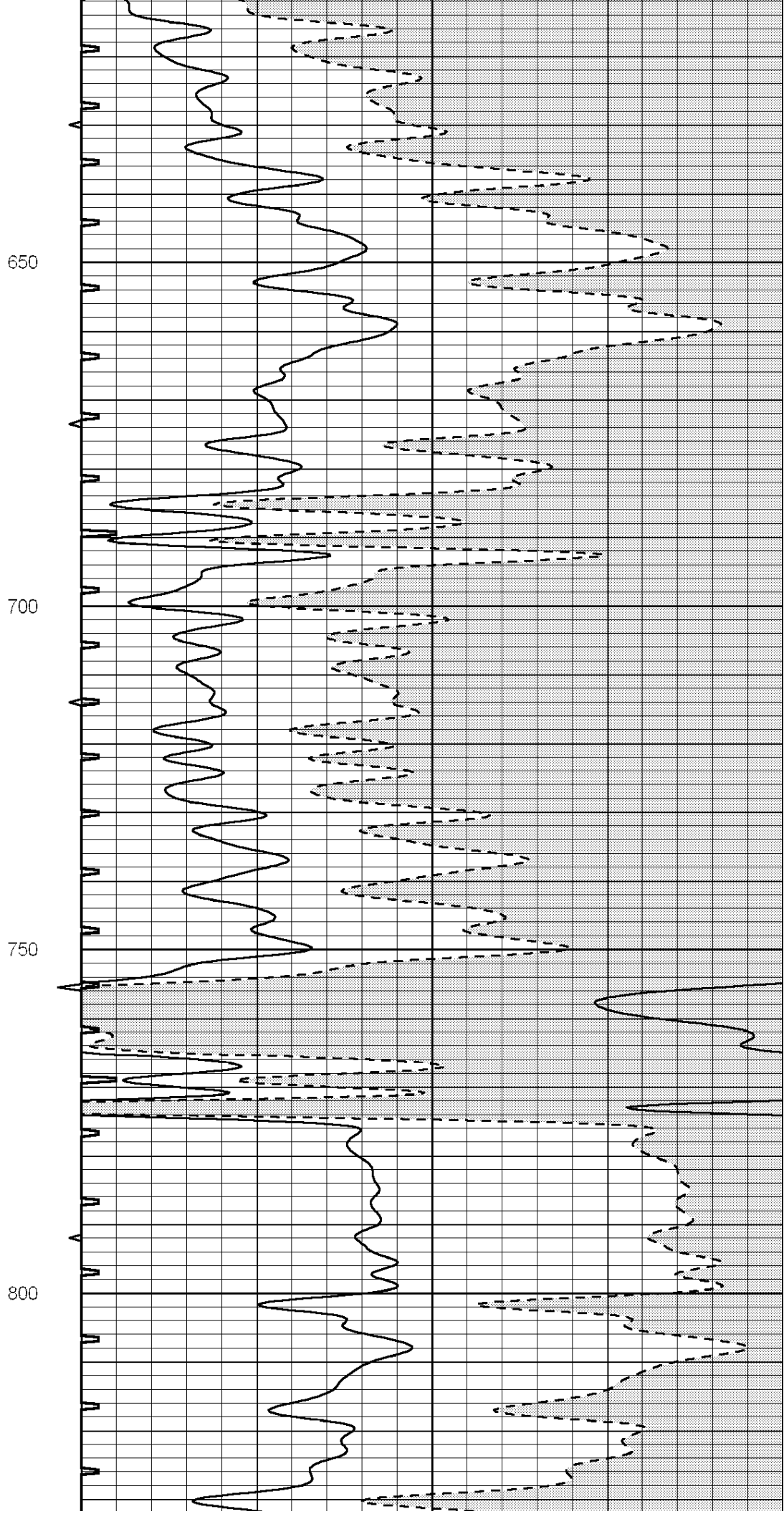
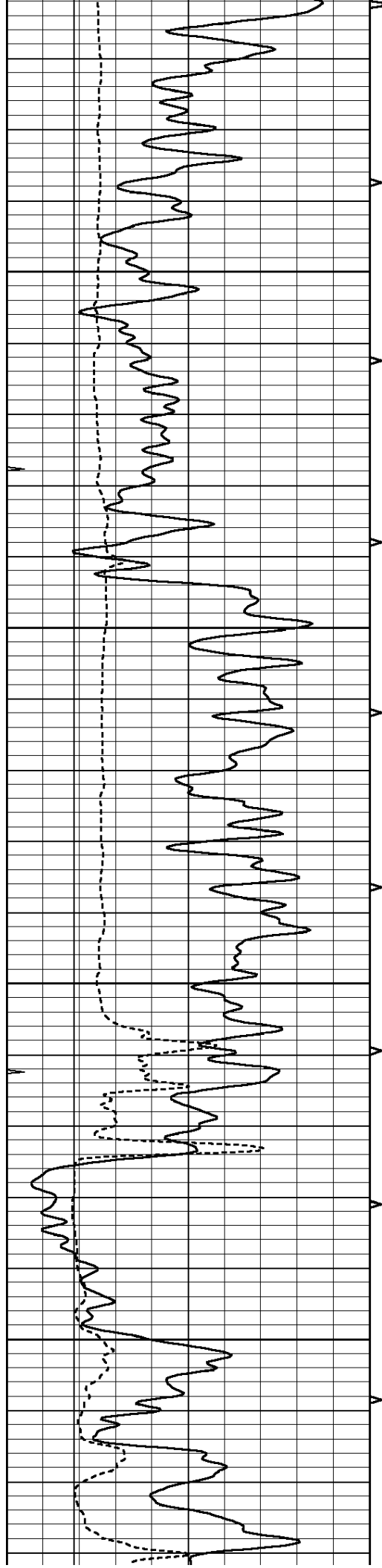
MAIN SECTION

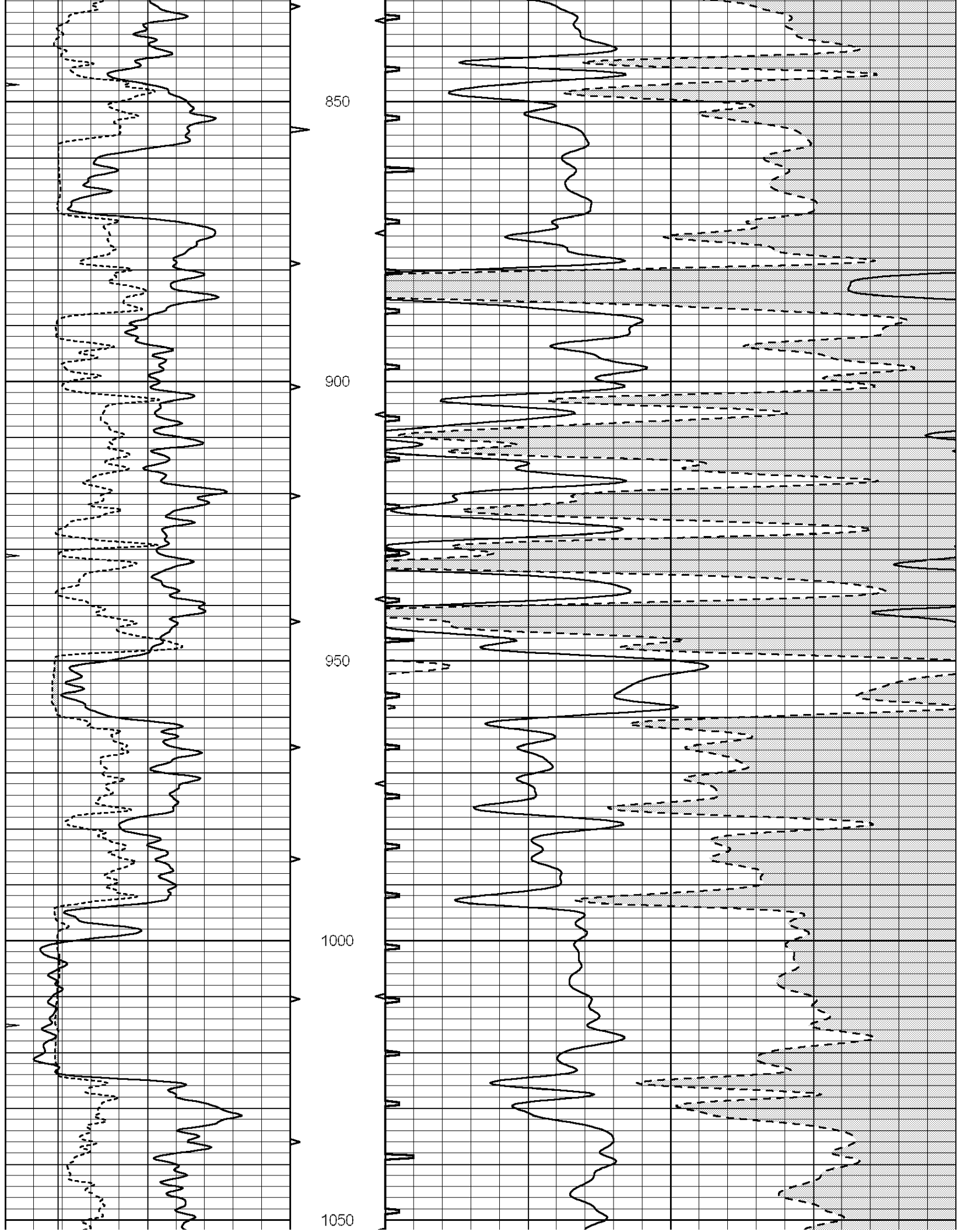
Database File: 006304ddn.db
 Dataset Pathname: pass5.1A
 Presentation Format: slt
 Dataset Creation: Sat Dec 04 07:00:05 2010
 Charted by: Depth in Feet scaled 1:240

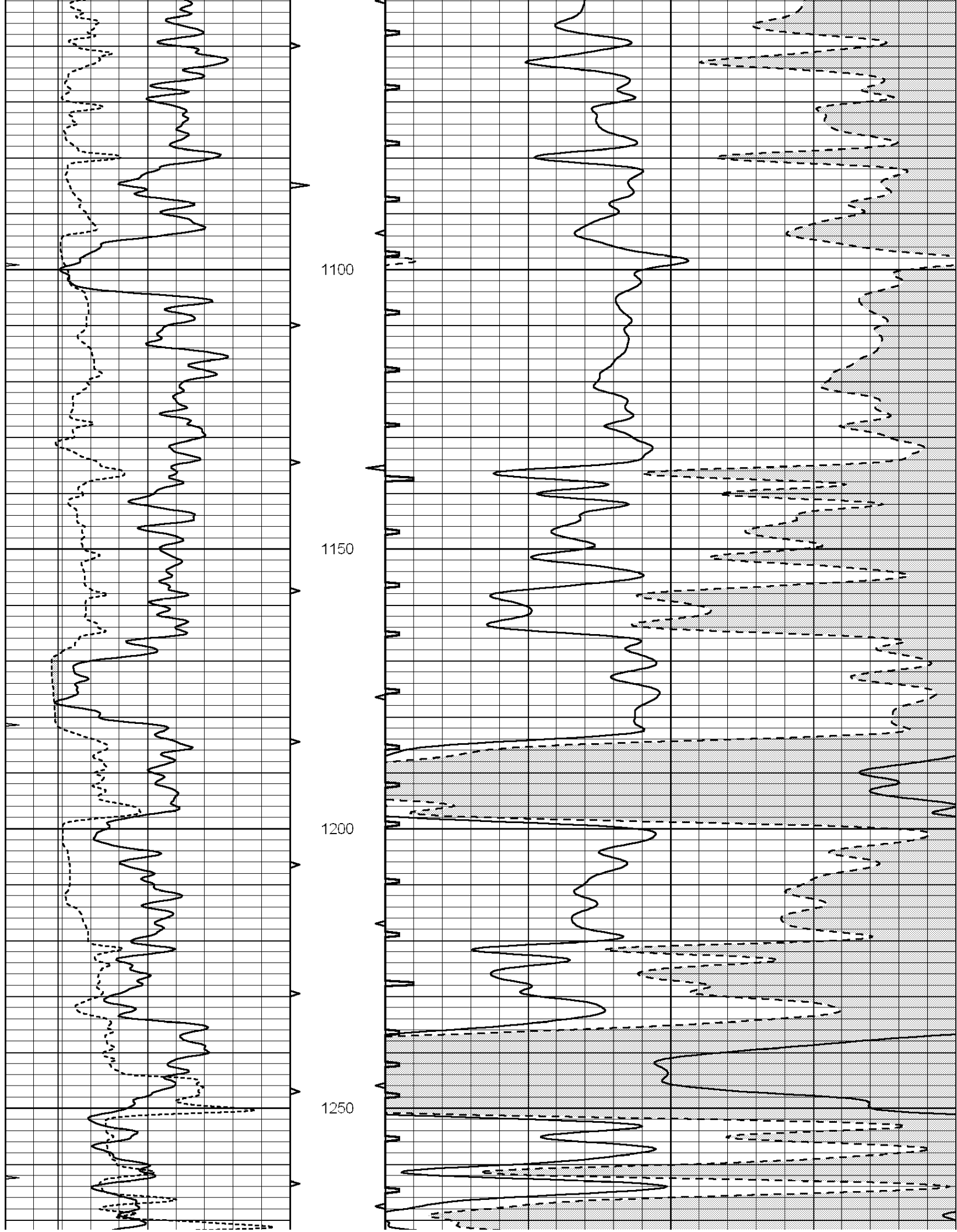
0	GAMMA RAY (GAPI)	150	ABHV	140	DELTA TIME (usec/ft)	40	
6	CALIPER (in)	16	10 (ft3)	0	30	SONIC POROSITY (pu)	-10
0	MINMK	20	TBHV	0	ITT (msec)	20	
			0 (ft3)	10			

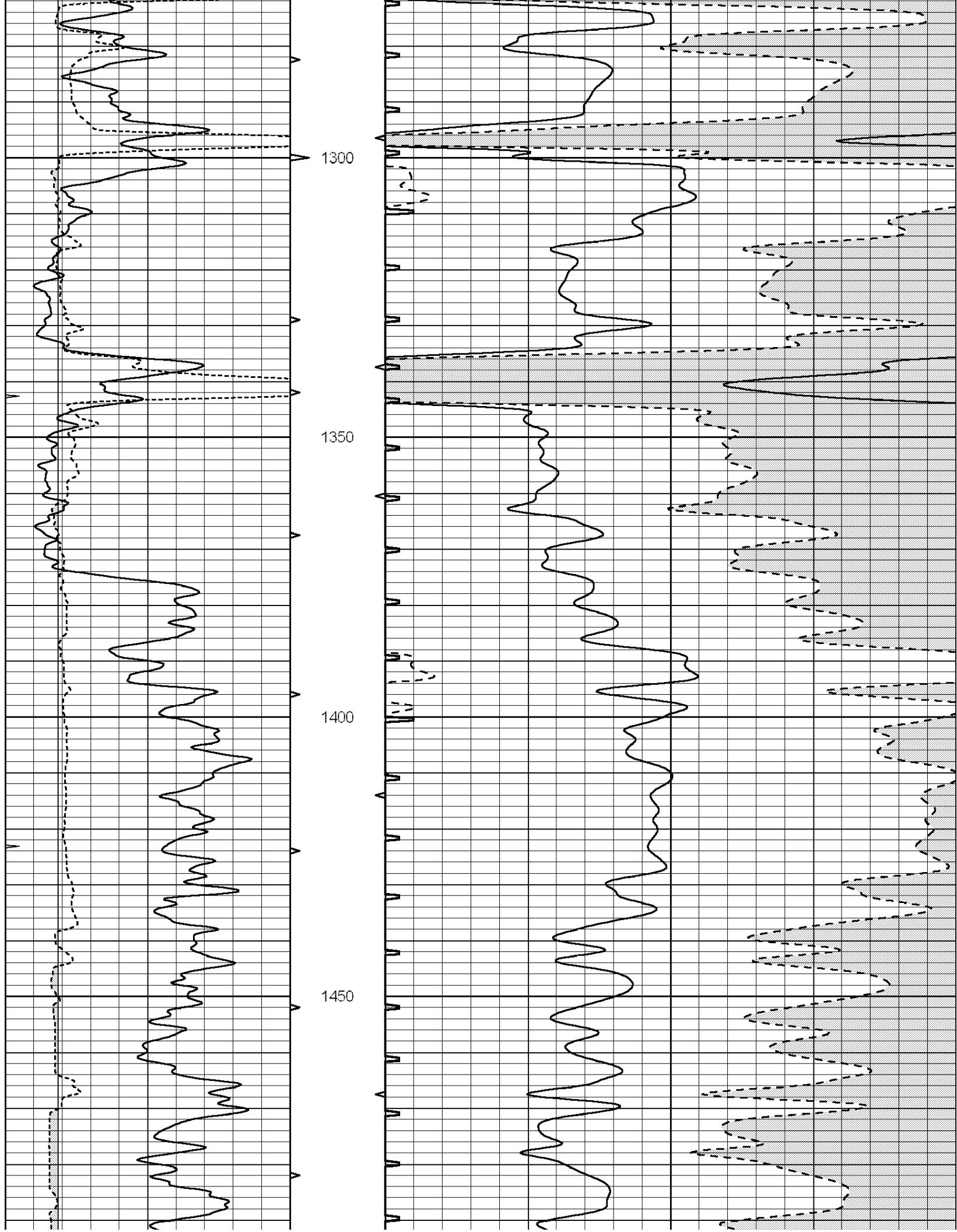


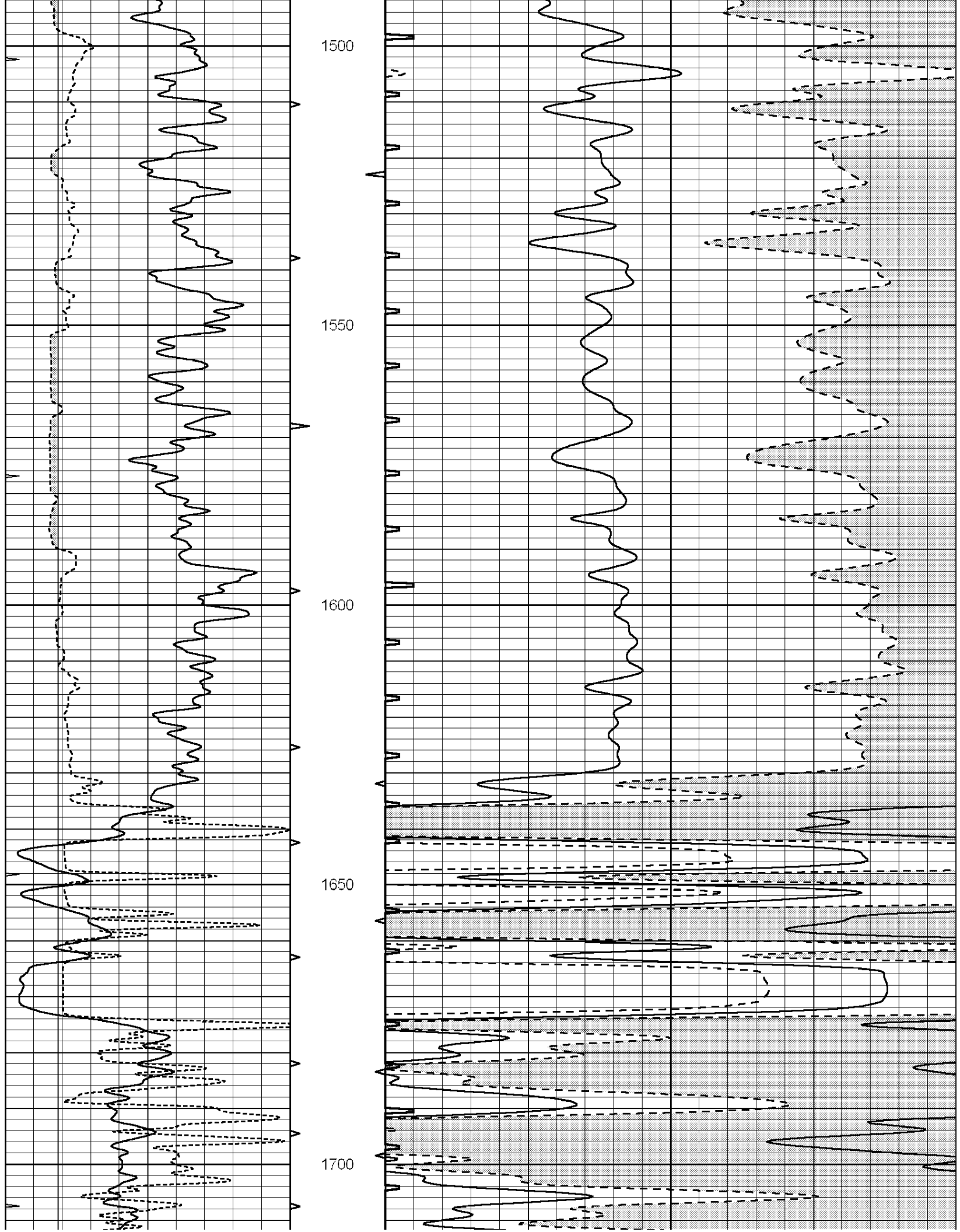


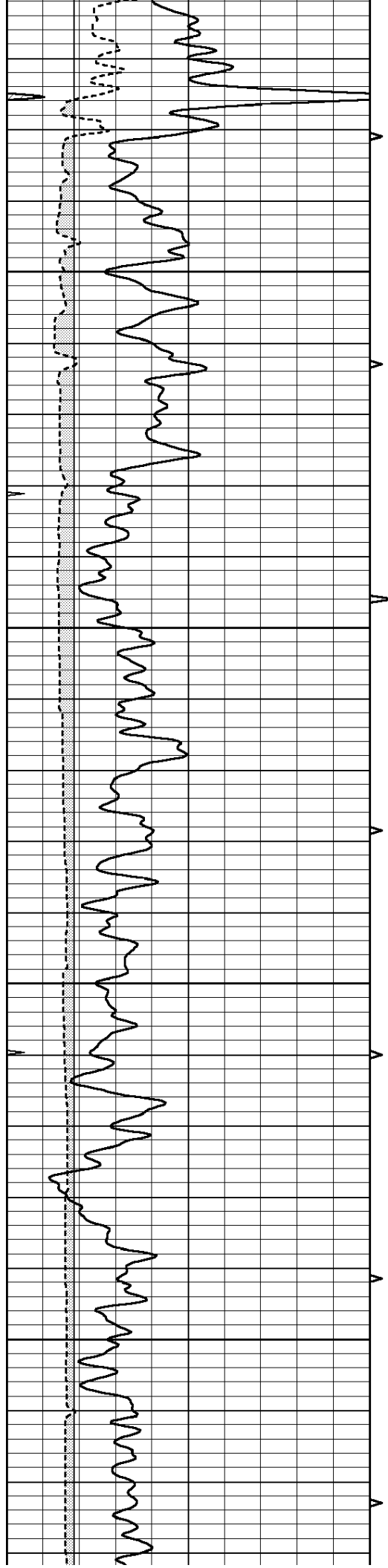










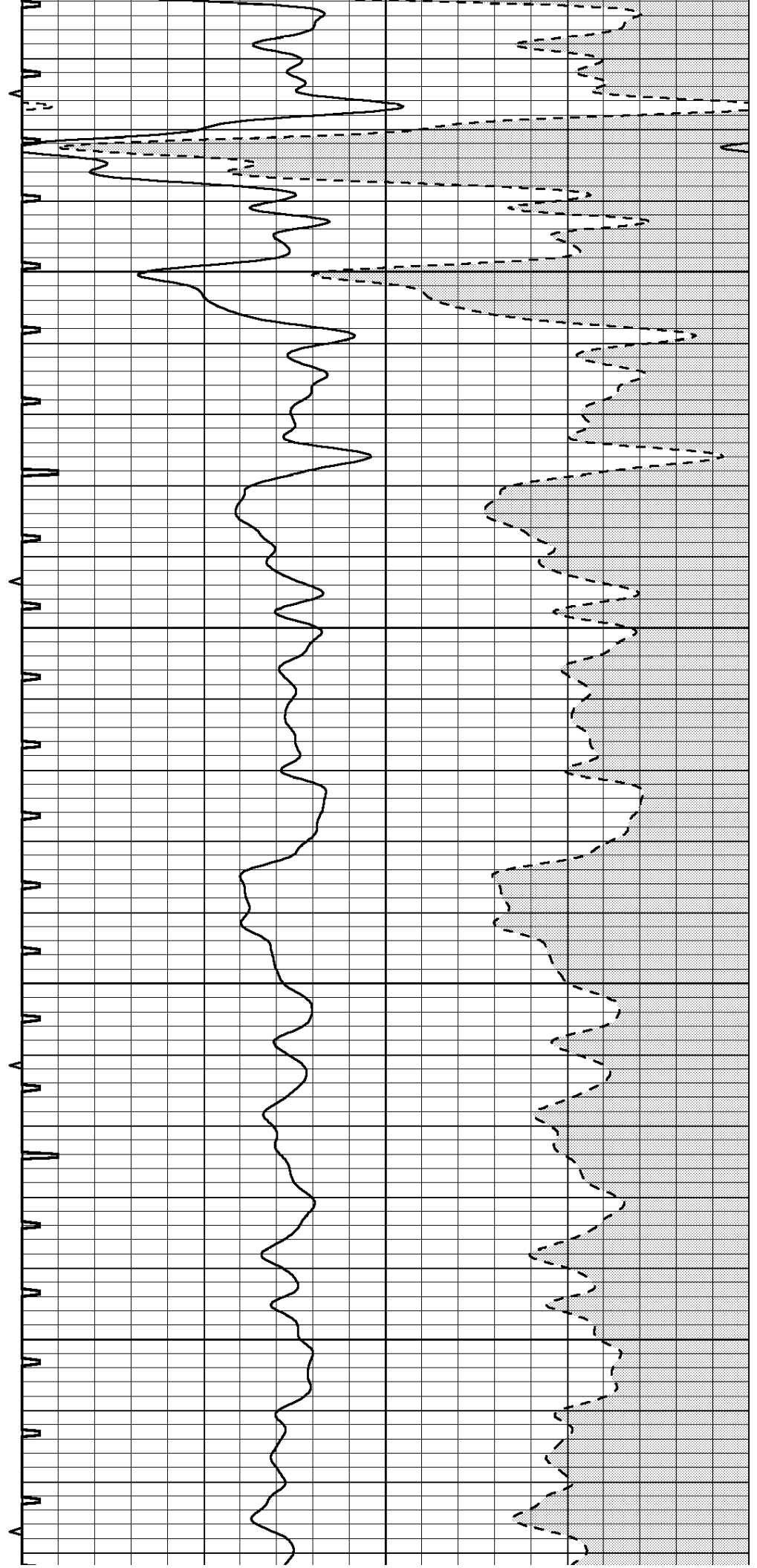


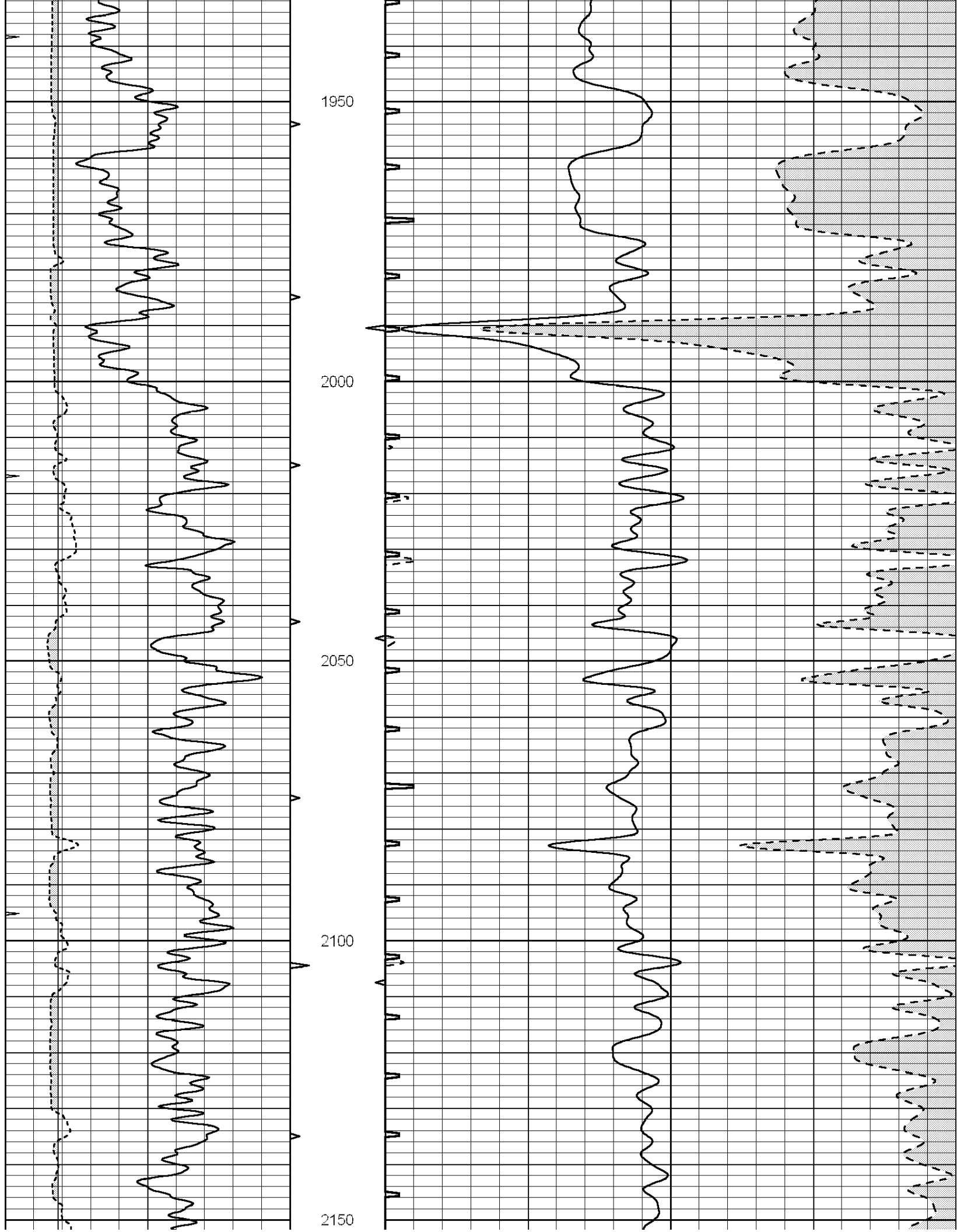
1750

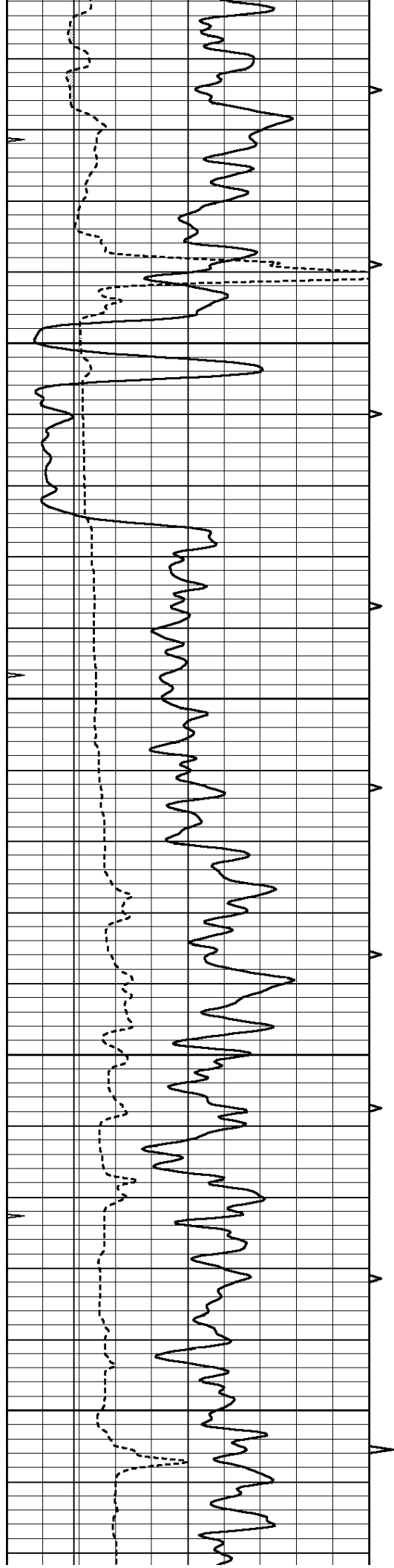
1800

1850

1900





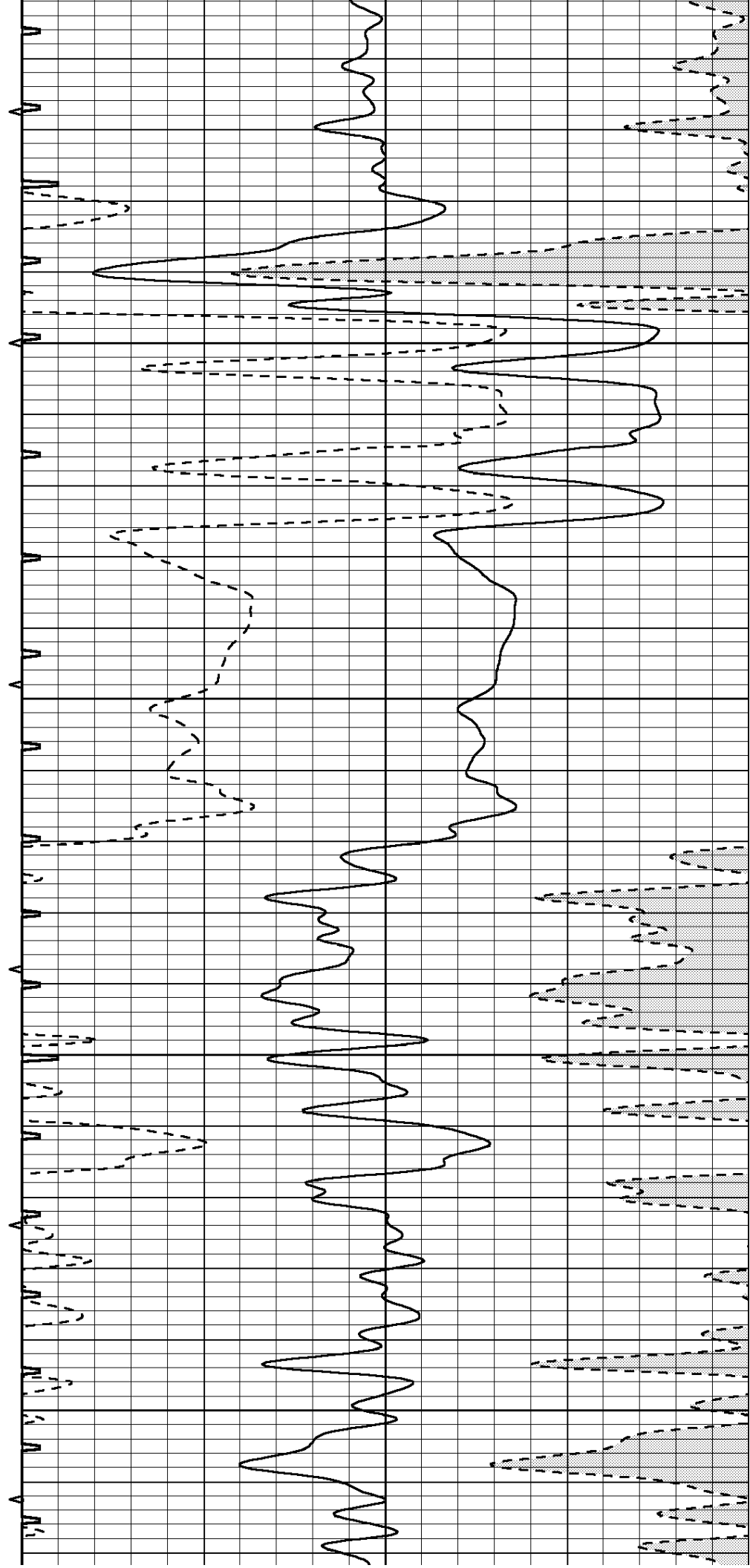


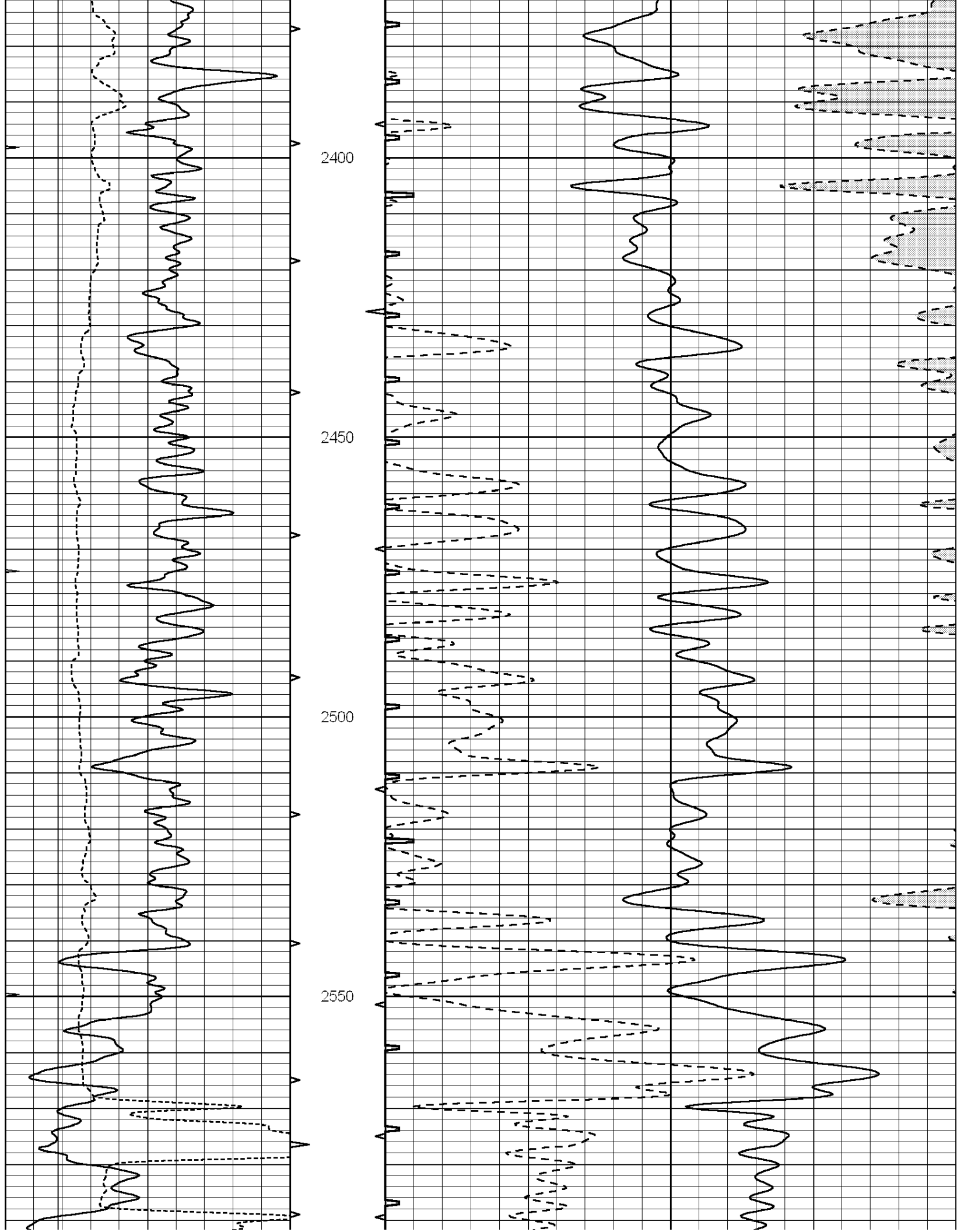
2200

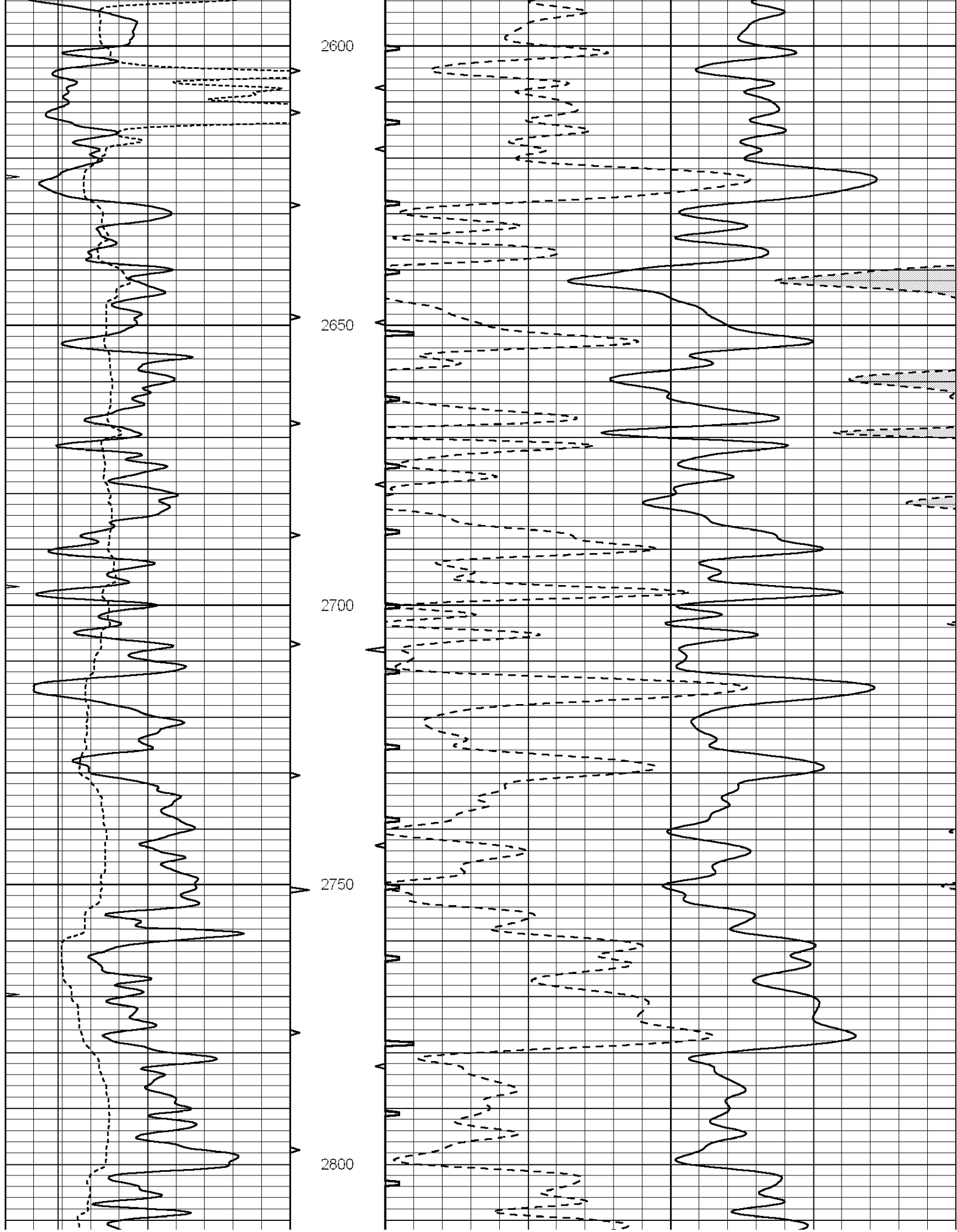
2250

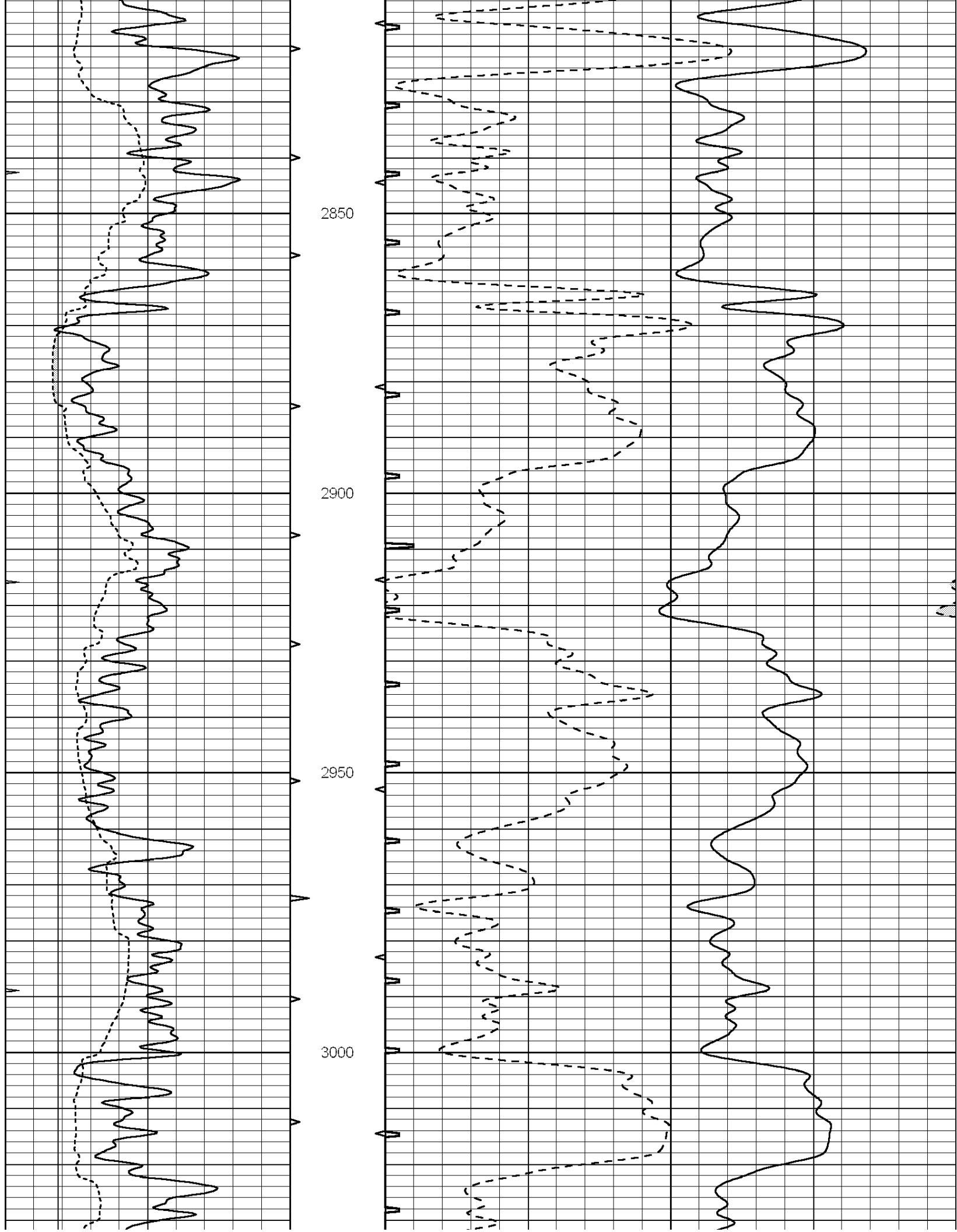
300

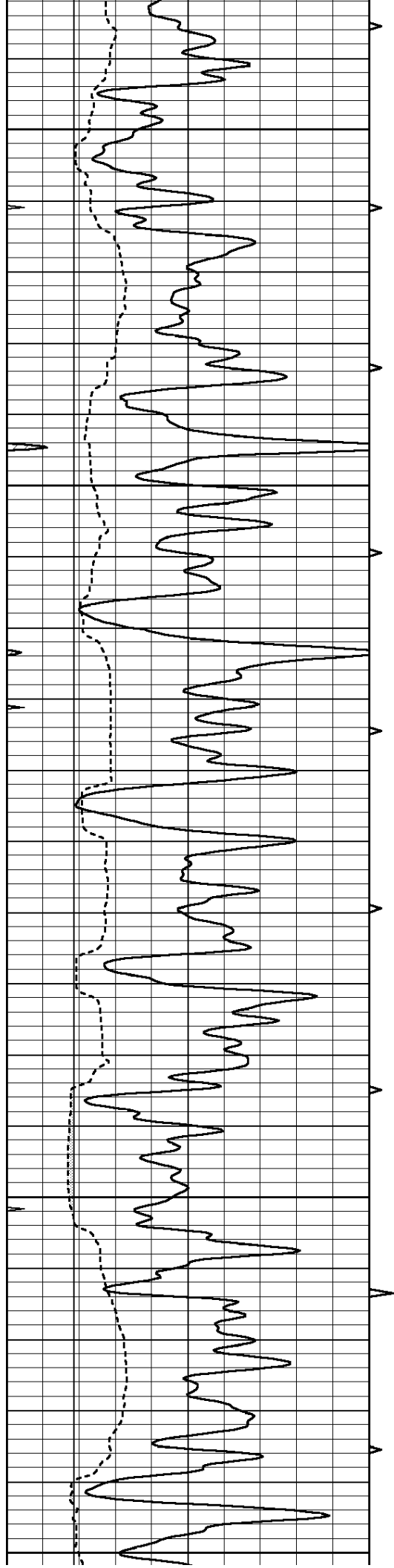
350



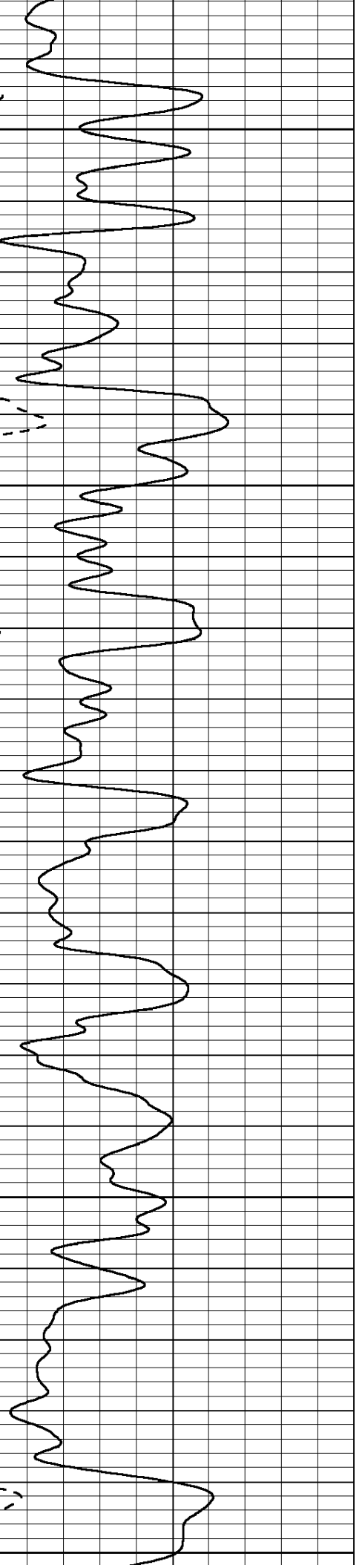
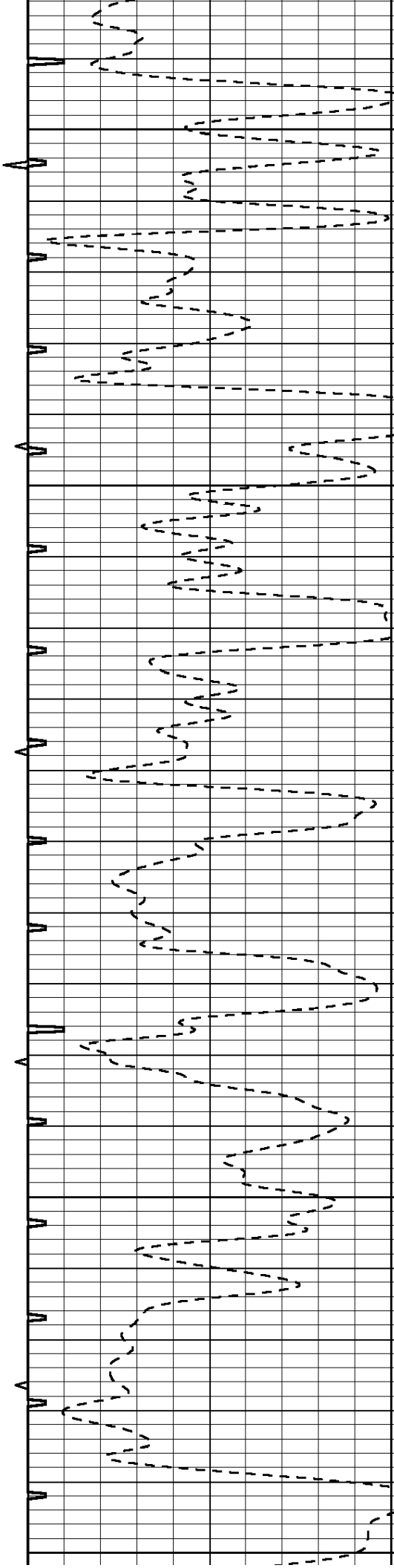


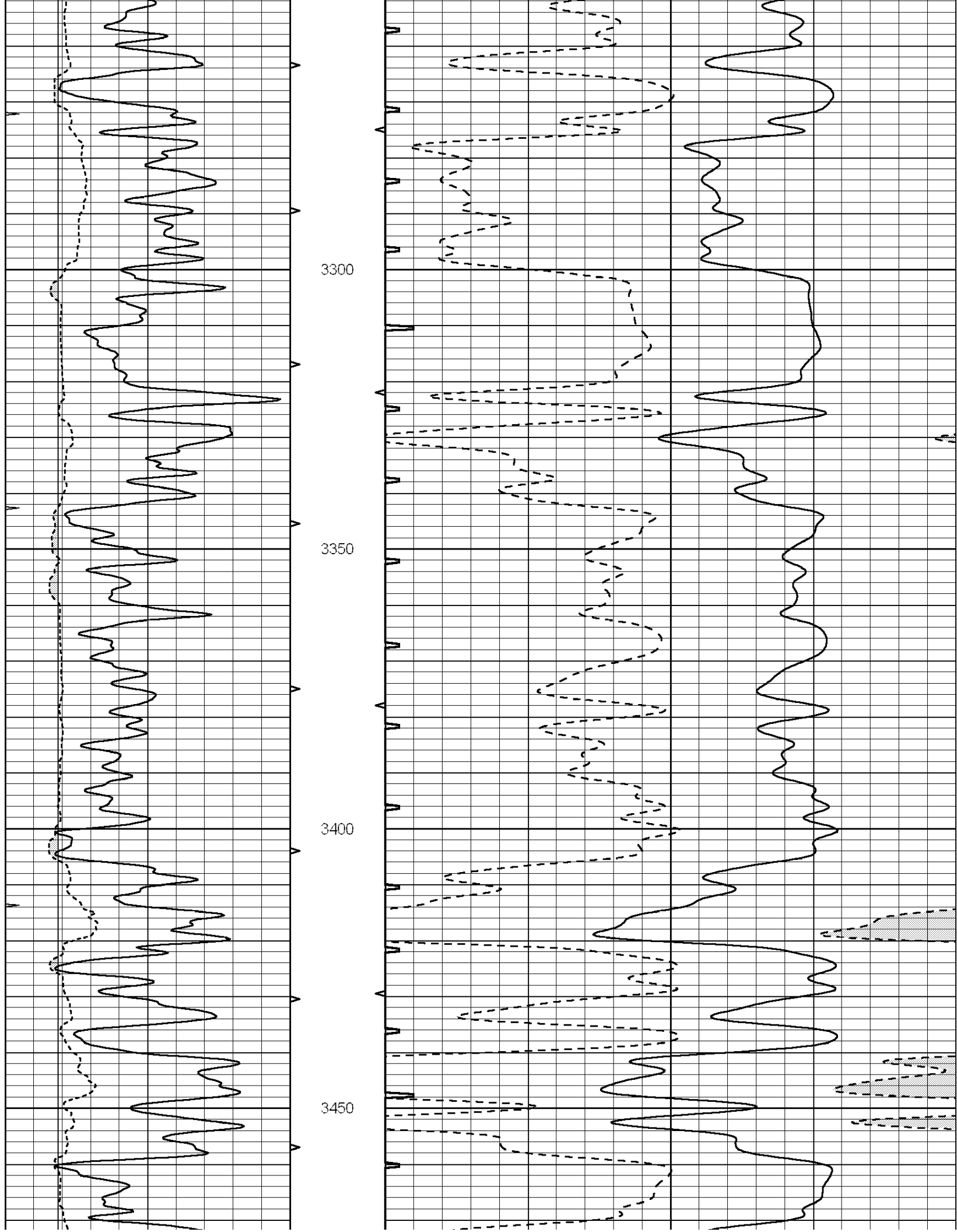


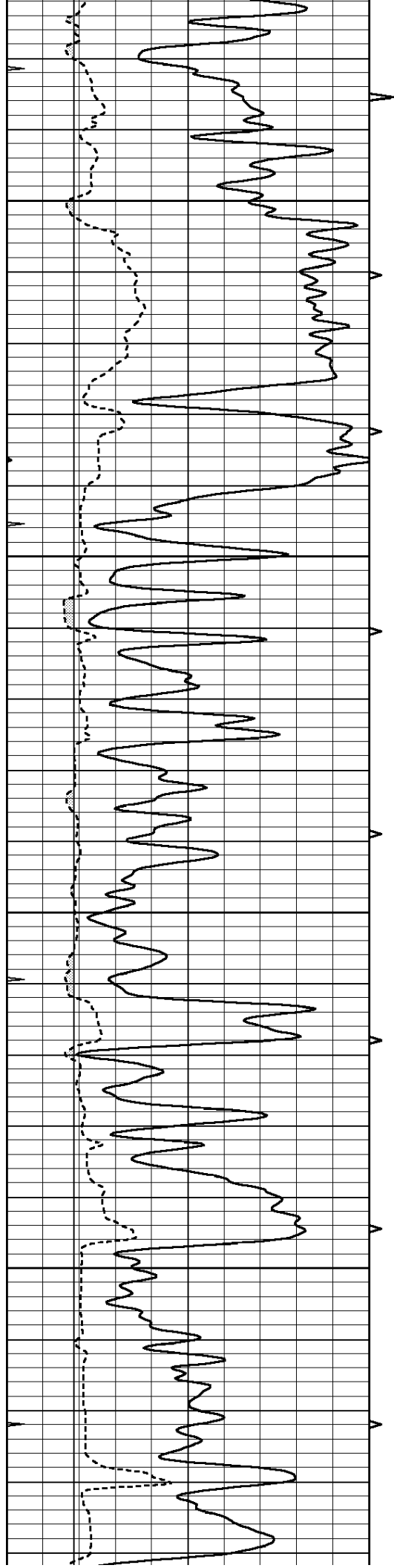




3050
3100
3150
3200
3250





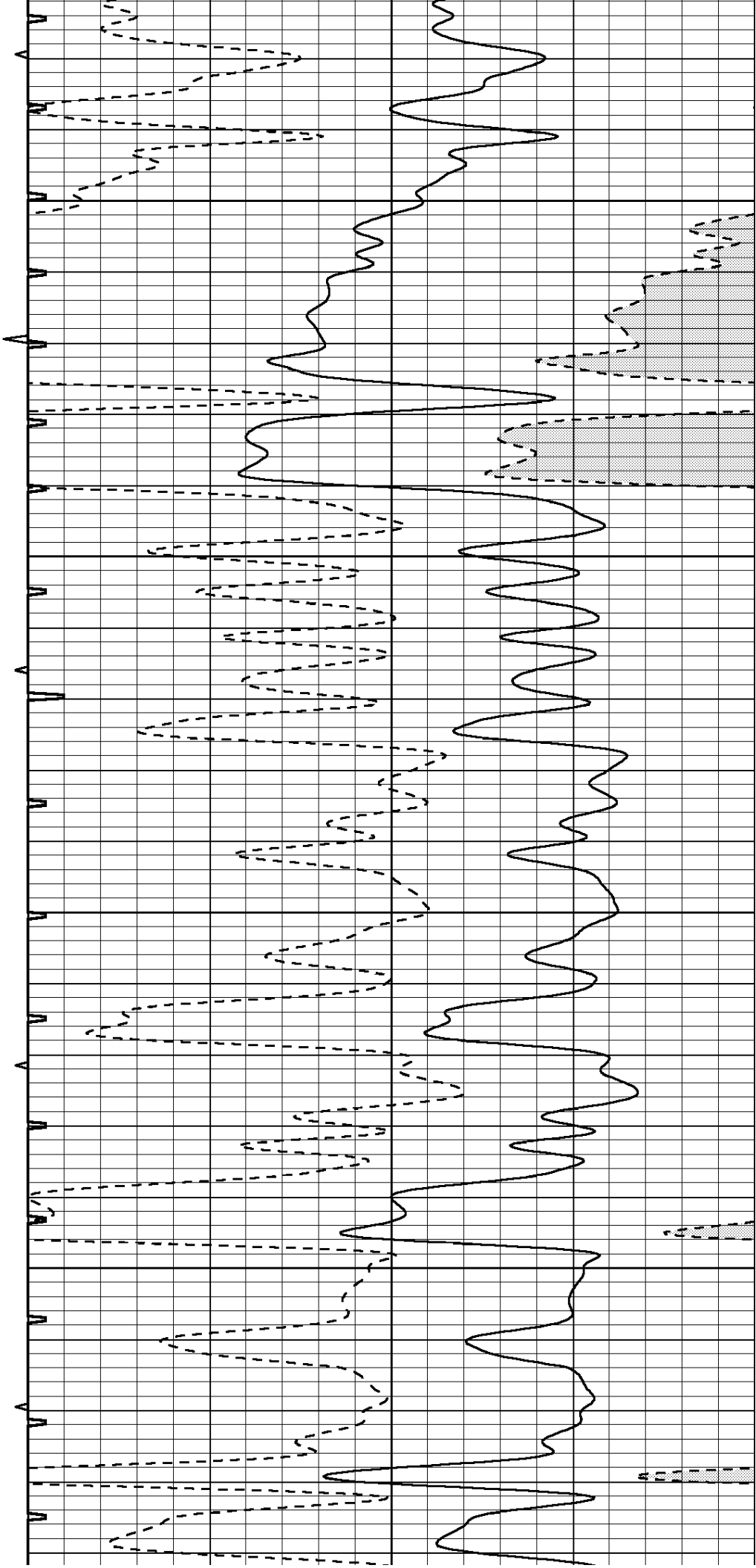


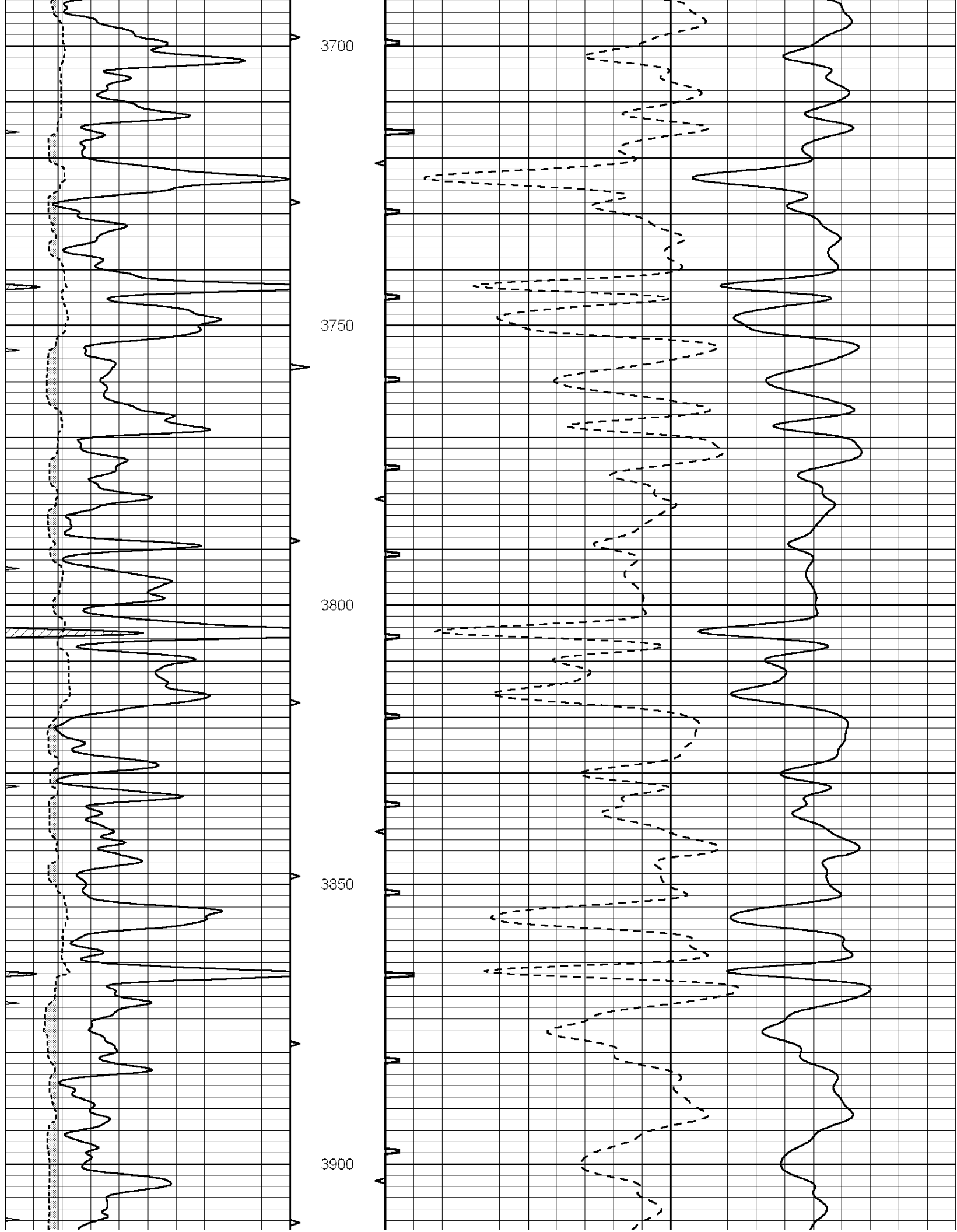
3500

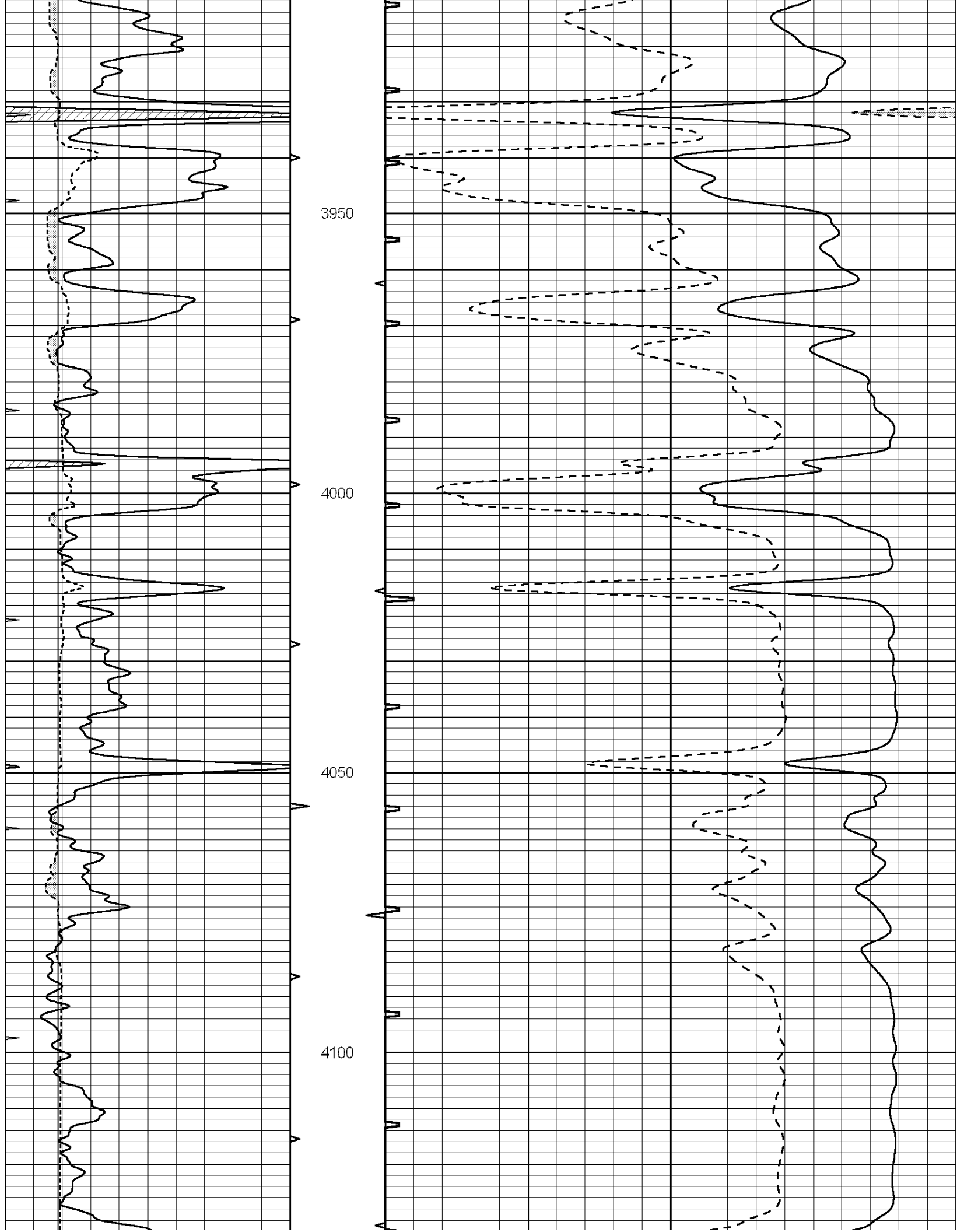
3550

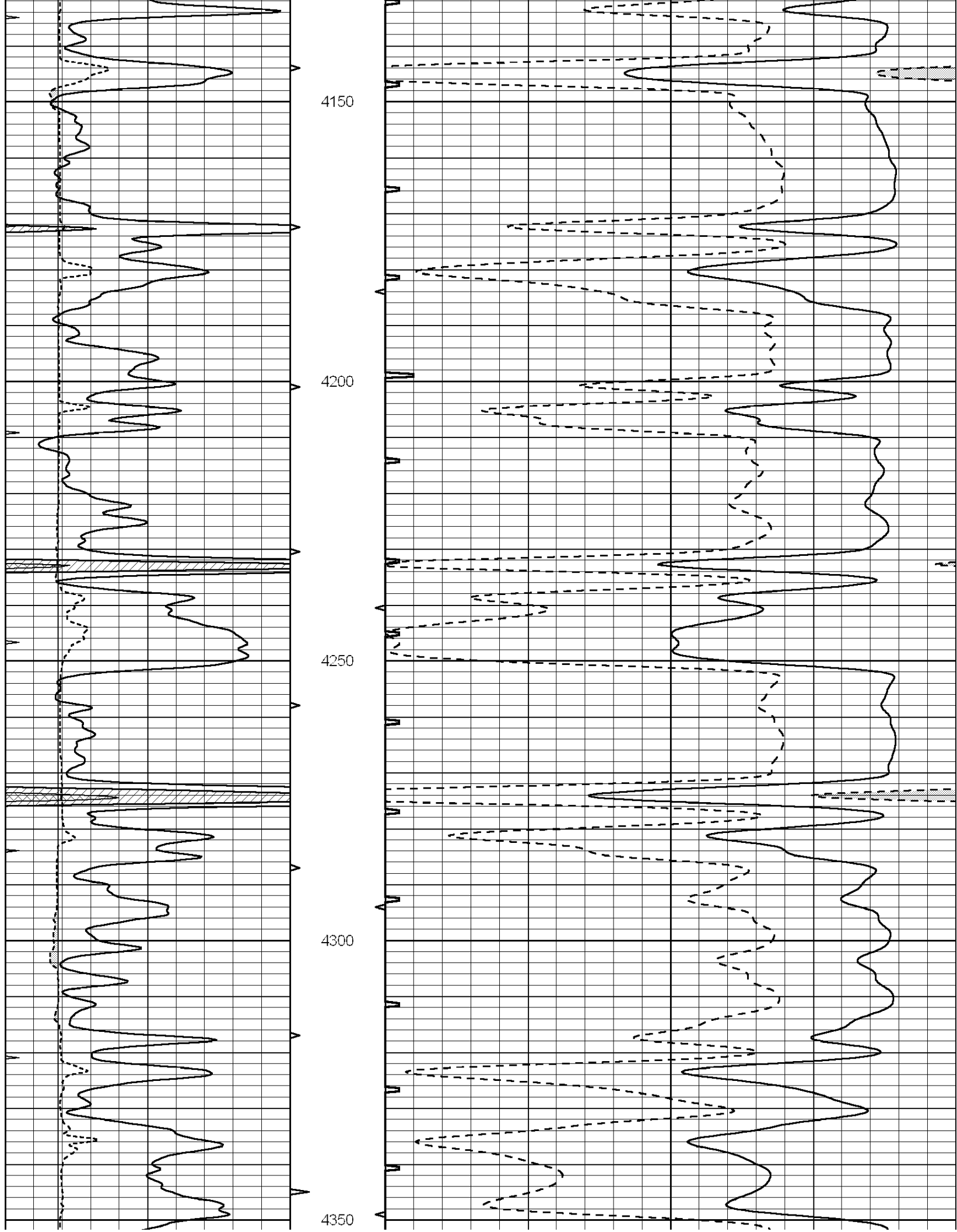
3600

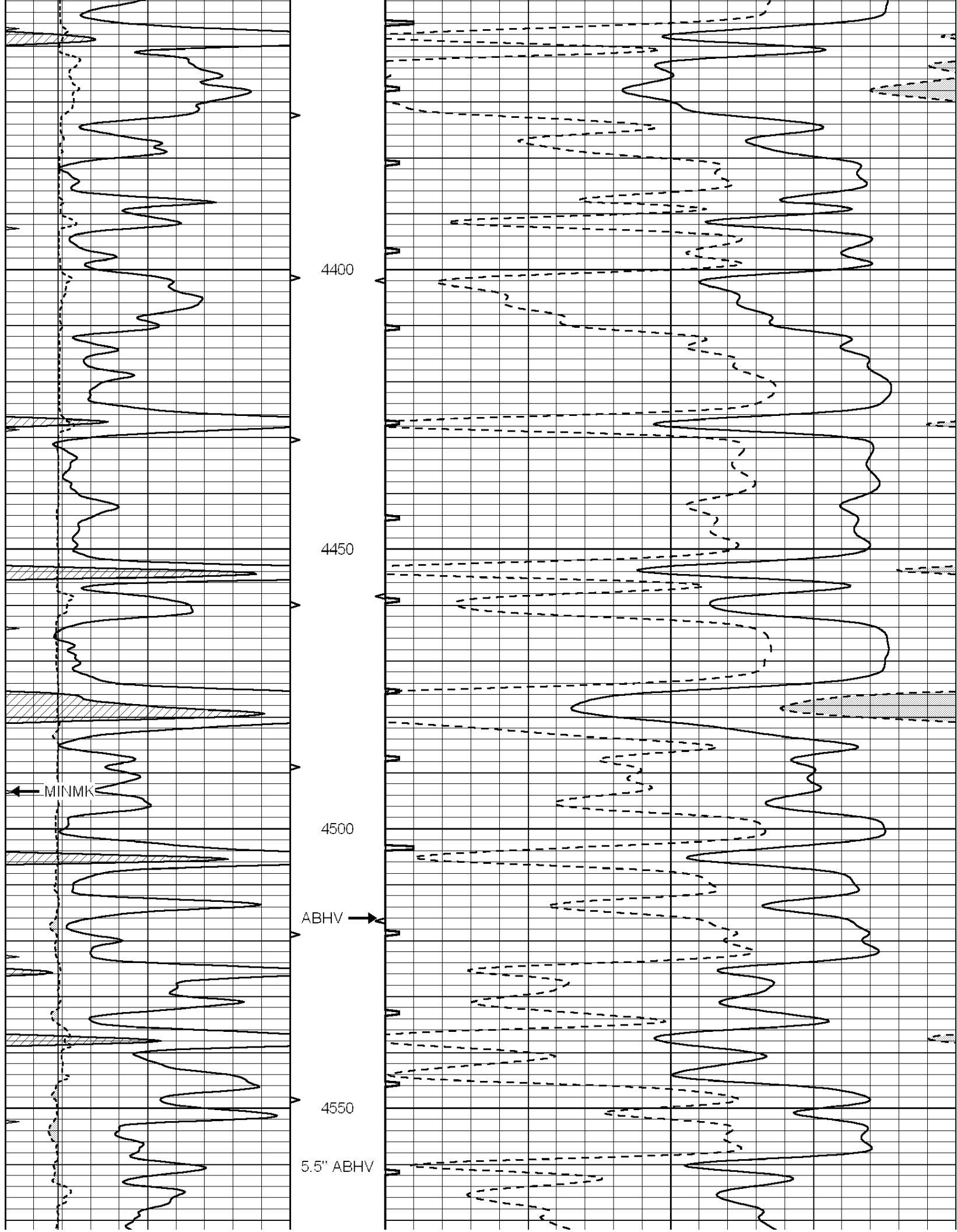
3650

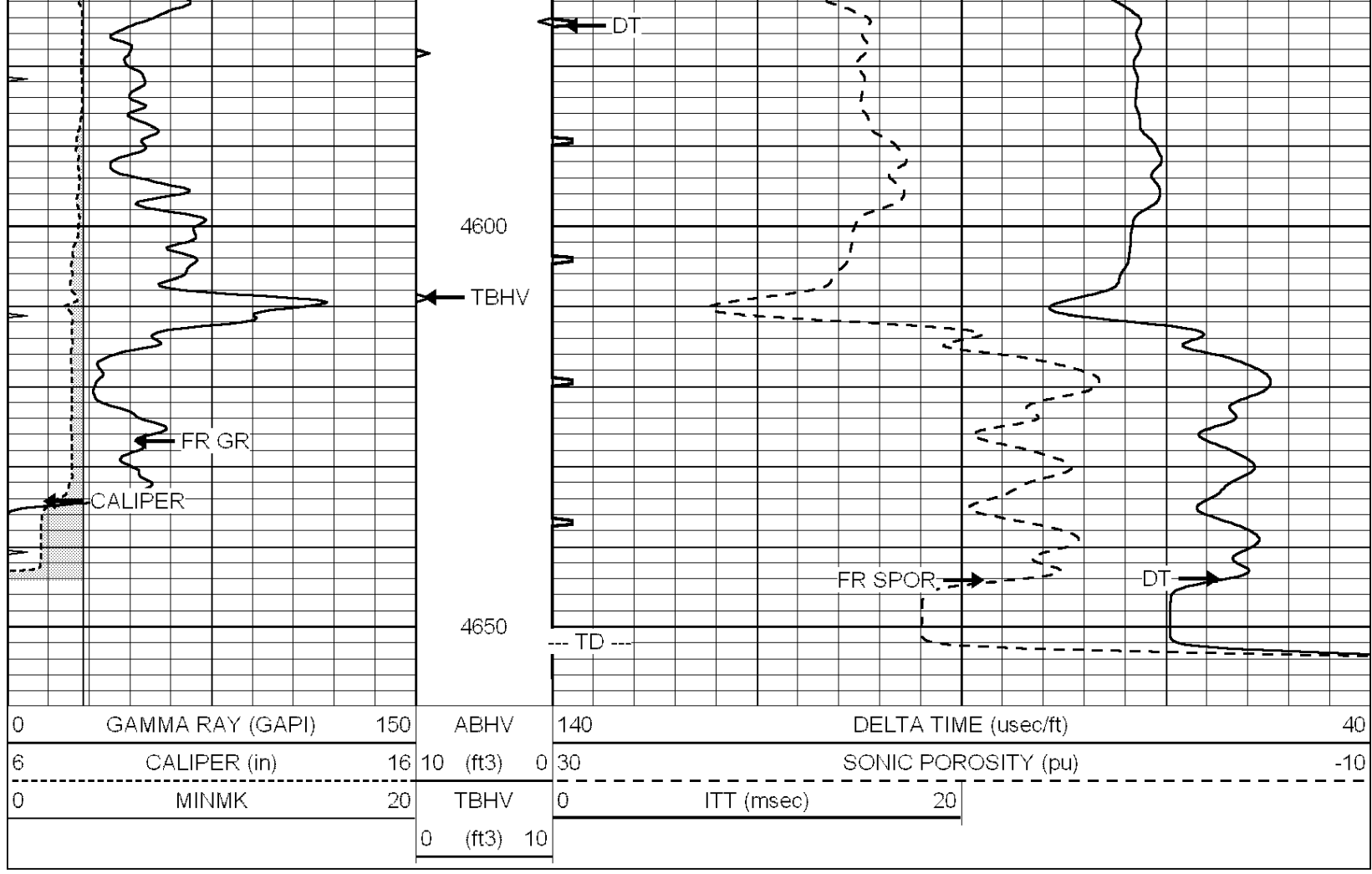










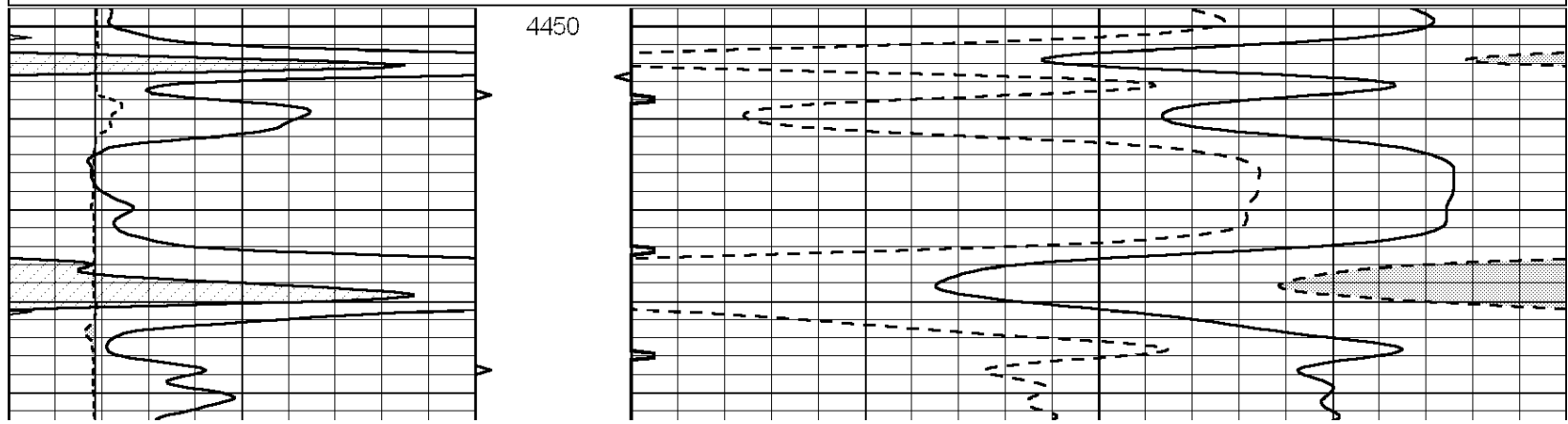


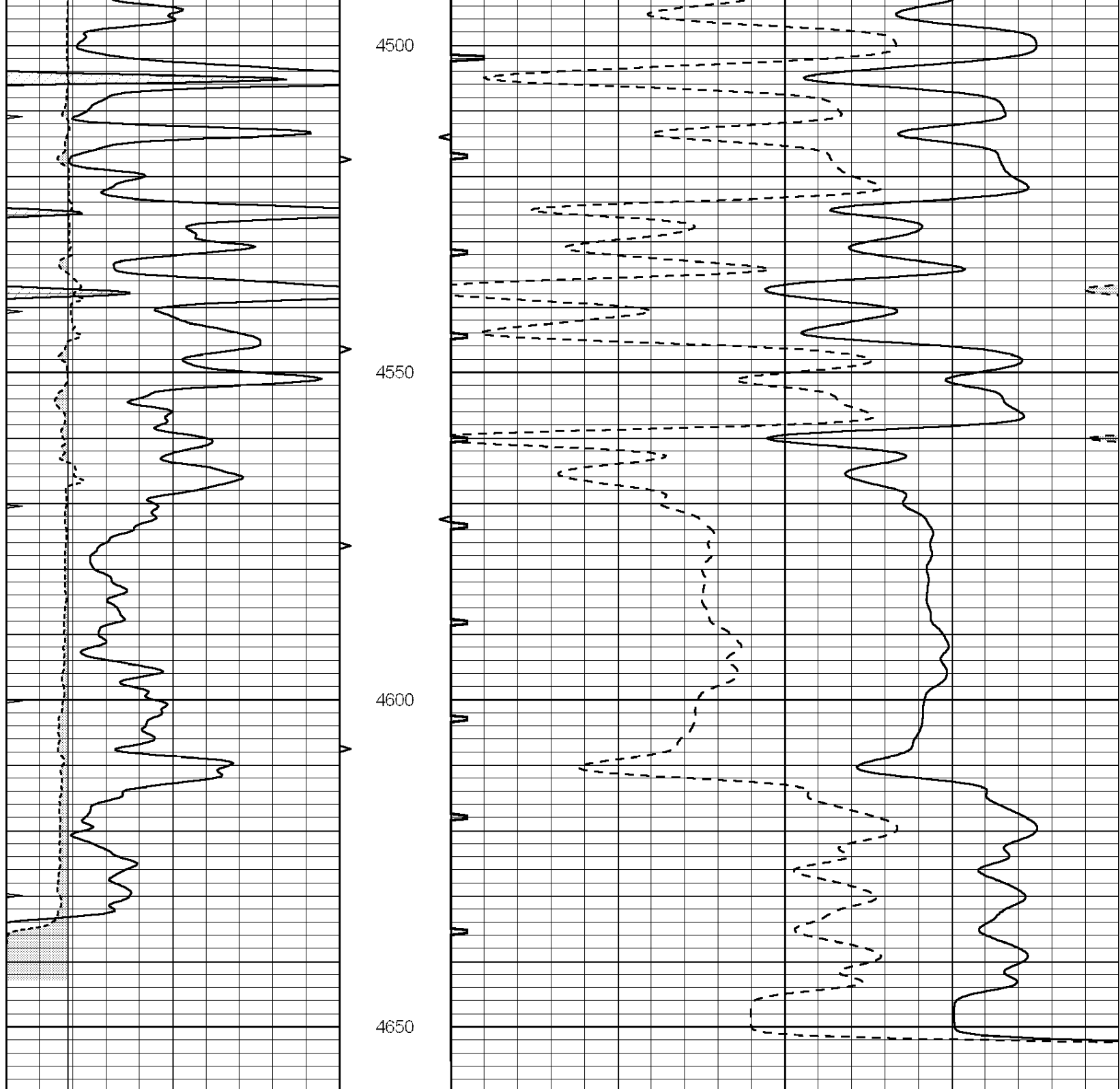
SUPERIOR
Hays,
Kansas

REPEAT SECTION

Database File: 006304ddn.db
 Dataset Pathname: pass4.1
 Presentation Format: slt
 Dataset Creation: Sat Dec 04 07:28:03 2010 by Calc Open-Cased 090629
 Charted by: Depth in Feet scaled 1:240

0	GAMMA RAY (GAPI)	150	ABHV	140	DELTA TIME (usec/ft)	40
6	CALIPER (in)	16	10 (ft3)	0 30	SONIC POROSITY (pu)	-10
0	MINMK	20	TBHV	0	ITT (msec)	20
			0 (ft3)	10		





0	GAMMA RAY (GAPI)	150	ABHV	140	DELTA TIME (usec/ft)	40
6	CALIPER (in)	16	10 (ft3)	0 30	SONIC POROSITY (pu)	-10
0	MINMK	20	TBHV	0	ITT (msec)	20
			0 (ft3)	10		