



Microresistivity Log

DIGITAL LOG (785) 625-3858

API No.	15-039-21,120-00-00		
Company	Cholla Production, LLC		
Well	Kyte-Jording No 1-14		
Field	Jording		
County	Decatur	State	Kansas
Location	2310' FNL & 1980' FEL		
Sec:	14	Twp:	2S
		Rge:	30W
Permanent Datum	Ground Level	Elevation	2818
Log Measured From	Kelly Bushing	5 Ft. Above Perm. Datum	
Drilling Measured From	Kelly Bushing		
		Other Services	CNL/CDL DIL
		Elevation	K.B. 2823 D.F. 2818 G.L. 2818

Date	11/07/2010
Run Number	Two
Depth Driller	4050
Depth Logger	4050
Bottom Logged Interval	4049
Top Log Interval	3400
Casing Driller	8.625 @ 294
Casing Logger	298
Bit Size	7.875
Type Fluid in Hole	Chemical
Salinity, ppm CL	2,300
Density / Viscosity	9.0 55
pH / Fluid Loss	10.5 7.6
Source of Sample	Flowline
Rm @ Meas. Temp	1.3 @ 68
Rmf @ Meas. Temp	.98 @ 68
Rmc @ Meas. Temp	1.76 @ 68
Source of Rmf / Rmc	Charts
Rm @ BHT	.75 @ 119
Operating Rig Time	3 Hours
Max Rec. Temp. F	119
Equipment Number	17
Location	Hays
Recorded By	Mike Garrison
Witnessed By	Bill Goff

<<< Fold Here >>>

All interpretations are opinions based on inferences from electrical or other measurements and we cannot and do not guarantee the accuracy or correctness of any interpretation, and we shall not, except in the case of gross or willful negligence on our part, be liable or responsible for any loss, costs, damages, or expenses incurred or sustained by anyone resulting from any interpretation made by any of our officers, agents or employees. These interpretations are also subject to our general terms and conditions set out in our current Price Schedule.

Comments

Thank you for using Log-Tech, Inc.
(785) 625-3858

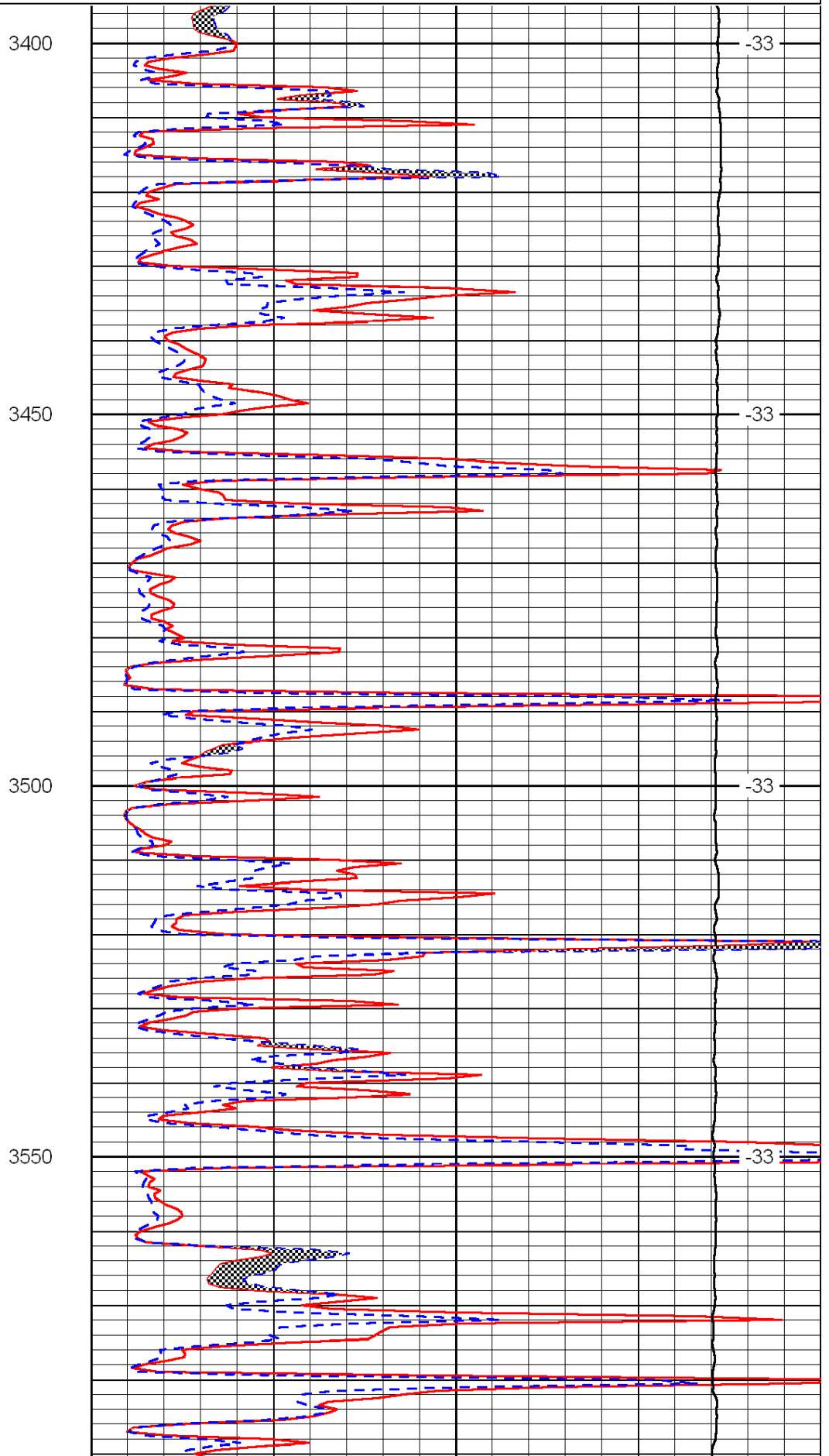
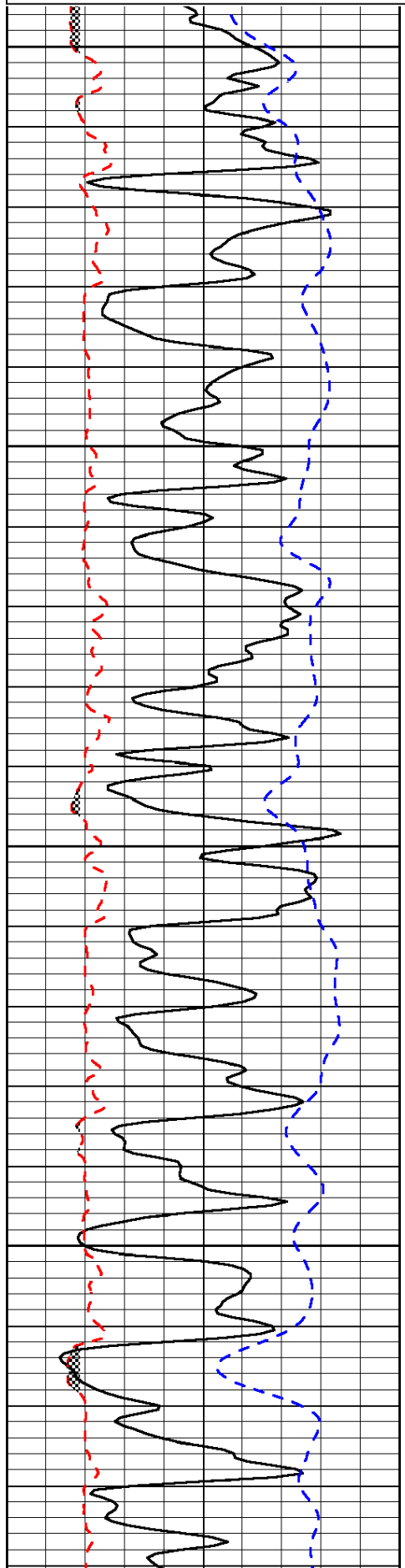
Oberlin, 5 West to Traer Rd, 3 North, 1 West, North Into

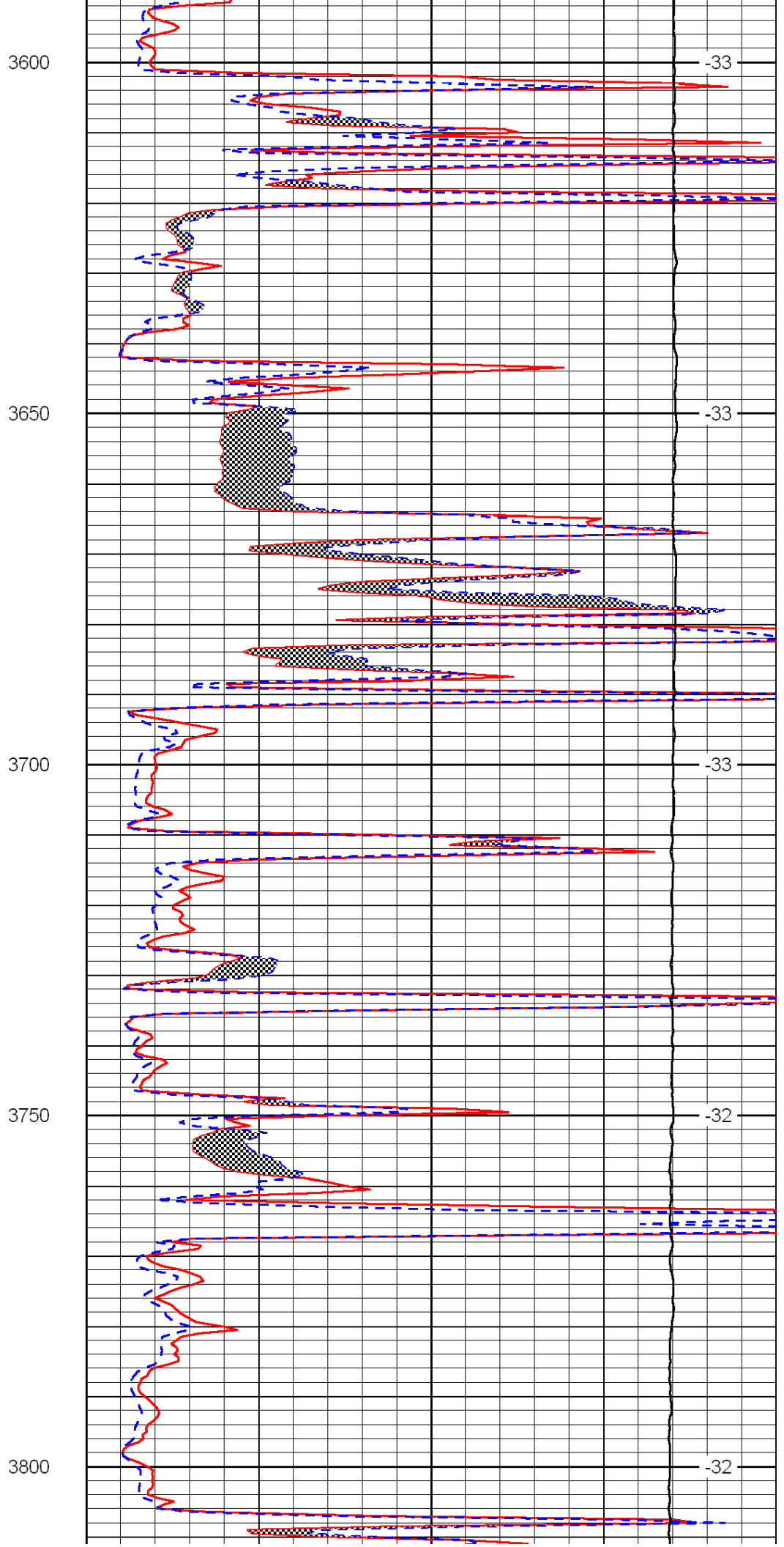
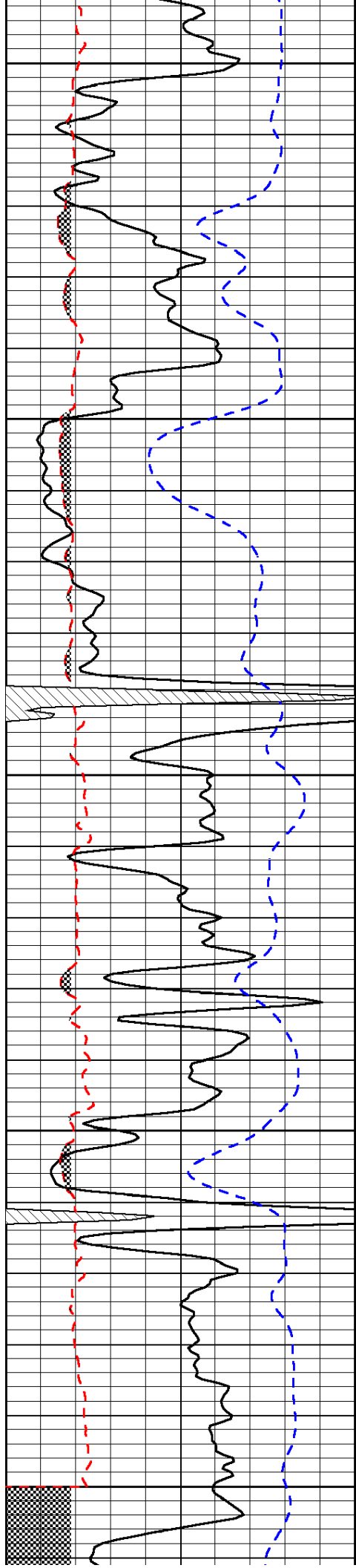
Database File: c:\warrior\data\cholla_kyte-jording no 1-14\cholla.d.db
 Dataset Pathname: dil\chollastck
 Presentation Format: micro
 Dataset Creation: Sun Nov 07 07:01:42 2010
 Charted by: Depth in Feet scaled 1:240

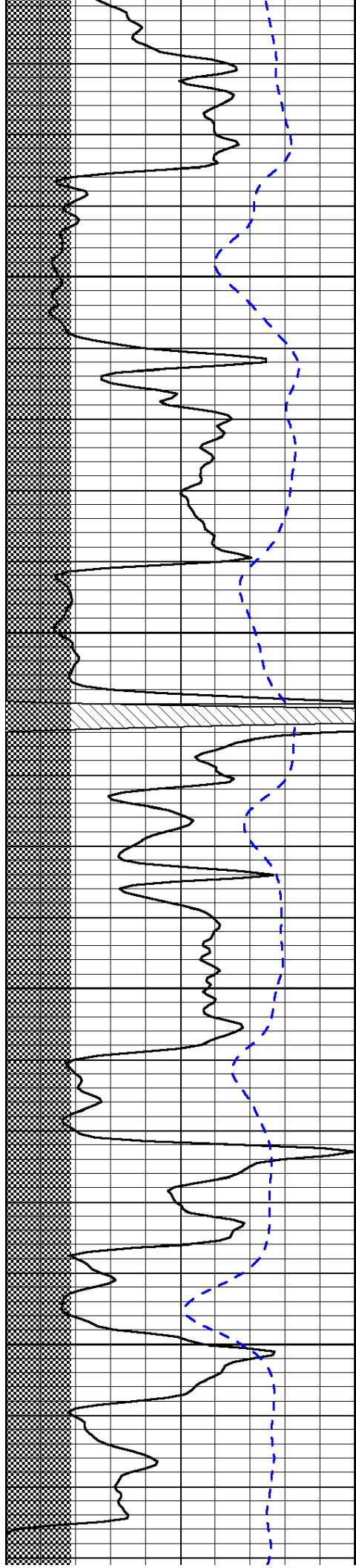
0	Gamma Ray	150
6	Micro Log Caliper (GAPI)	16
-200	SP (mV)	0

0	Micro Inverse 1 X 1	40
0	Micro Normal 2"	40
15000	Line Weight	0

LSPD







3850

3900

3950

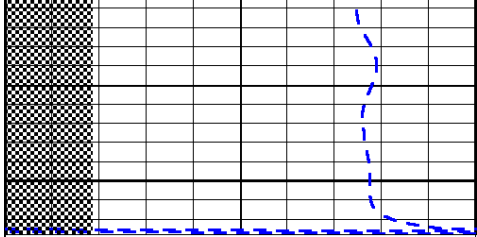
4000

-32

-32

-32

-32

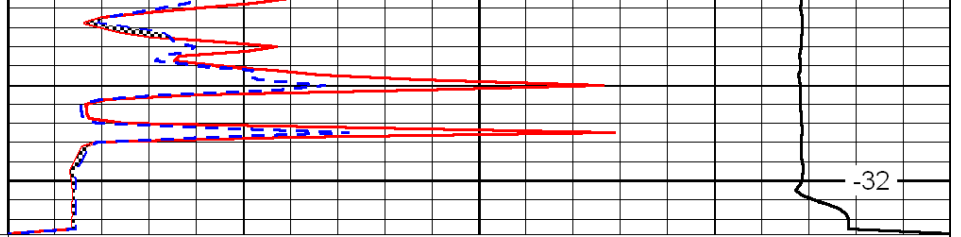


0 Gamma Ray 150

6 Micro Log Caliper (GAPI) 16

-200 SP (mV) 0

4050



0 Micro Inverse 1 X 1 40

0 Micro Normal 2" 40

15000 Line Weight 0

LSPD