



Dual Induction Log

DIGITAL LOG (785) 625-3858

API No.	15-039-21,120-00-00		
Company	Cholla Production, LLC		
Well	Kyte-Jording No 1-14		
Field	Jording		
County	Decatur	State	Kansas
Location	2310' FNL & 1980' FEL		
Sec:	14	Twp:	2S
		Rge:	30W
Permanent Datum	Ground Level	Elevation	2818
Log Measured From	Kelly Bushing	5 Ft. Above Perm. Datum	
Drilling Measured From	Kelly Bushing		
		Other Services	CNL/CDL MEL
		Elevation	K.B. 2823 D.F. 2818 G.L. 2818

Date	11/07/2010
Run Number	One
Depth Driller	4050
Depth Logger	4050
Bottom Logged Interval	4049
Top Log Interval	250
Casing Driller	8.625 @ 294
Casing Logger	298
Bit Size	7.875
Type Fluid in Hole	Chemical
Salinity, ppm CL	2,300
Density / Viscosity	9.0 55
pH / Fluid Loss	10.5 7.6
Source of Sample	Flowline
Rm @ Meas. Temp	1.3 @ 68
Rmf @ Meas. Temp	.98 @ 68
Rmc @ Meas. Temp	1.76 @ 68
Source of Rmf / Rmc	Charts
Rm @ BHT	.75 @ 119
Operating Rig Time	3 Hours
Max Rec. Temp. F	119
Equipment Number	17
Location	Hays
Recorded By	Mike Garrison
Witnessed By	Bill Goff

<<< Fold Here >>>

All interpretations are opinions based on inferences from electrical or other measurements and we cannot and do not guarantee the accuracy or correctness of any interpretation, and we shall not, except in the case of gross or willful negligence on our part, be liable or responsible for any loss, costs, damages, or expenses incurred or sustained by anyone resulting from any interpretation made by any of our officers, agents or employees. These interpretations are also subject to our general terms and conditions set out in our current Price Schedule.

Comments

Thank you for using Log-Tech, Inc.
(785) 625-3858

Oberlin, 5 West to Traer Rd, 3 North, 1 West, North Into

Database File: c:\warrior\data\cholla_kyte-jording no 1-14\cholla.d.db
 Dataset Pathname: dil\chollastck
 Presentation Format: dil2in
 Dataset Creation: Sun Nov 07 07:01:42 2010
 Charted by: Depth in Feet scaled 1:600

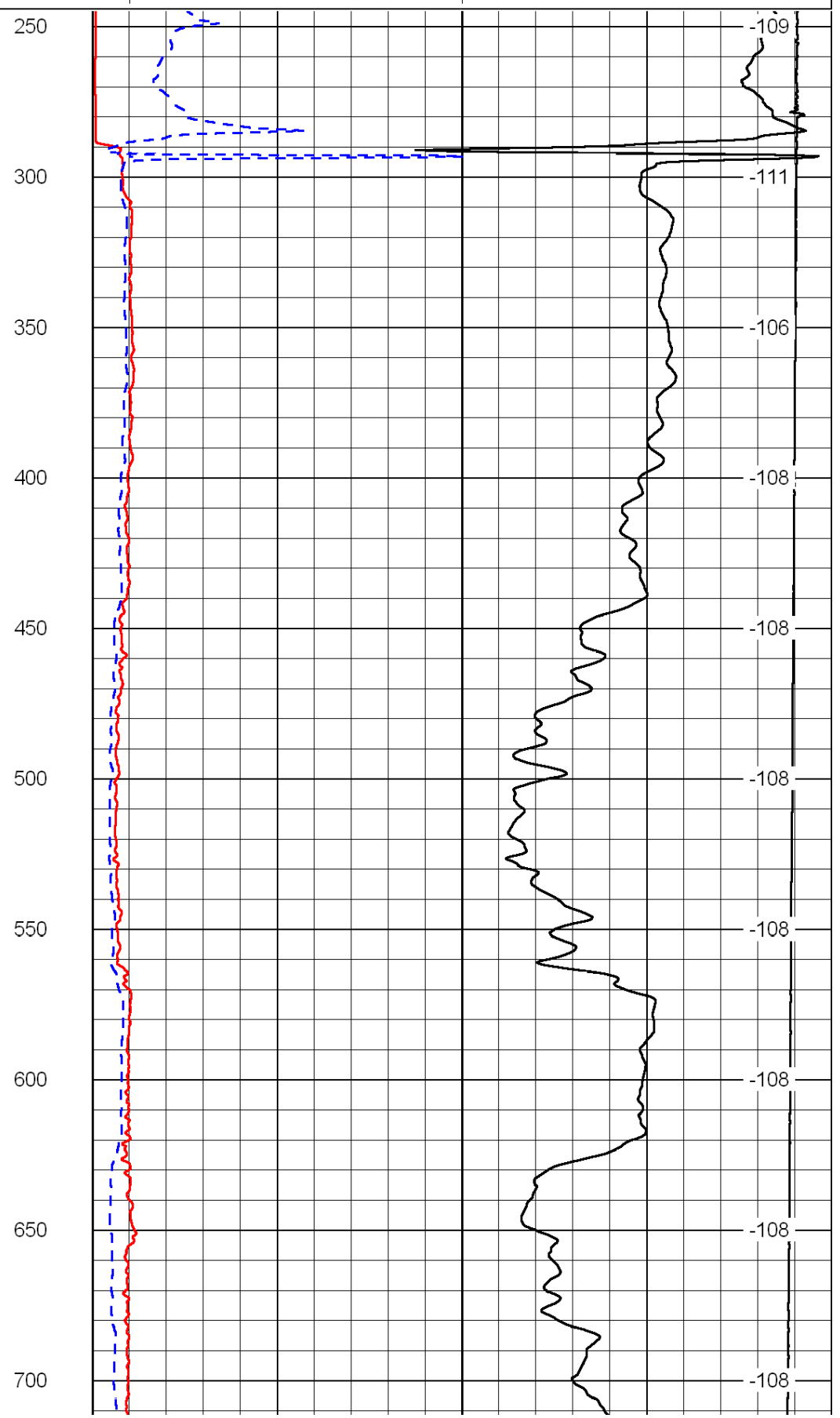
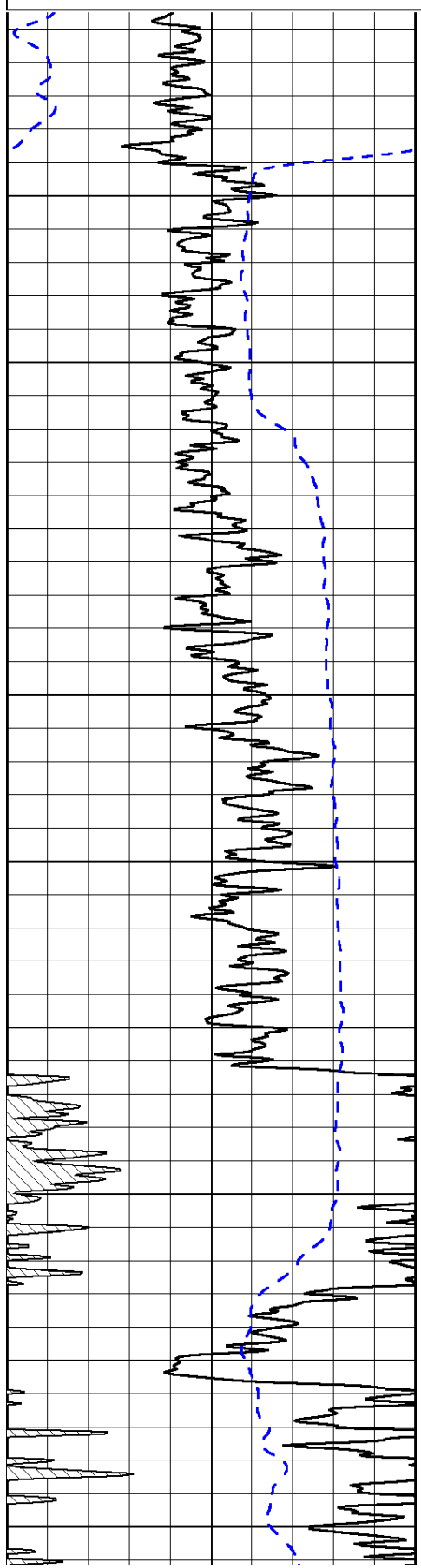
0	Gamma Ray	150
-200	SP (mV)	0

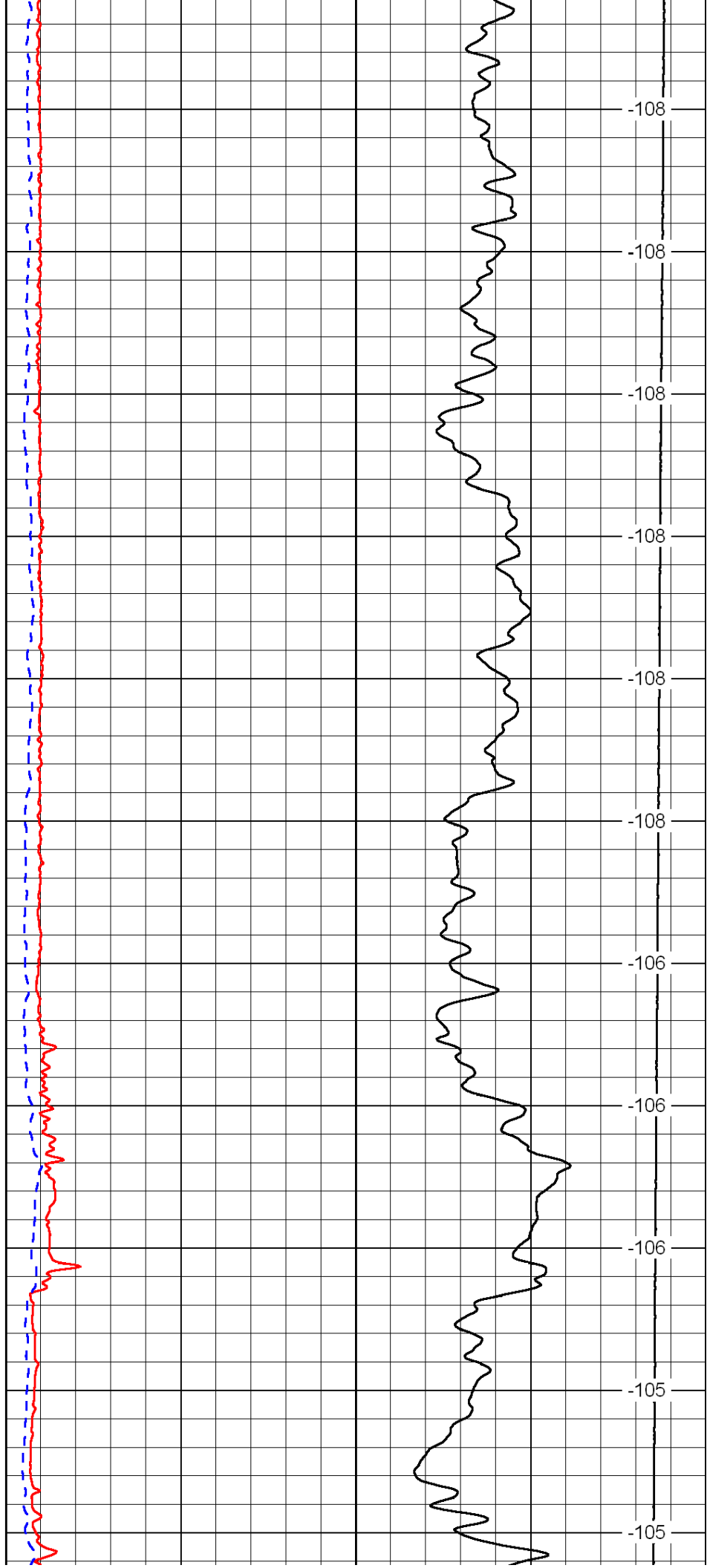
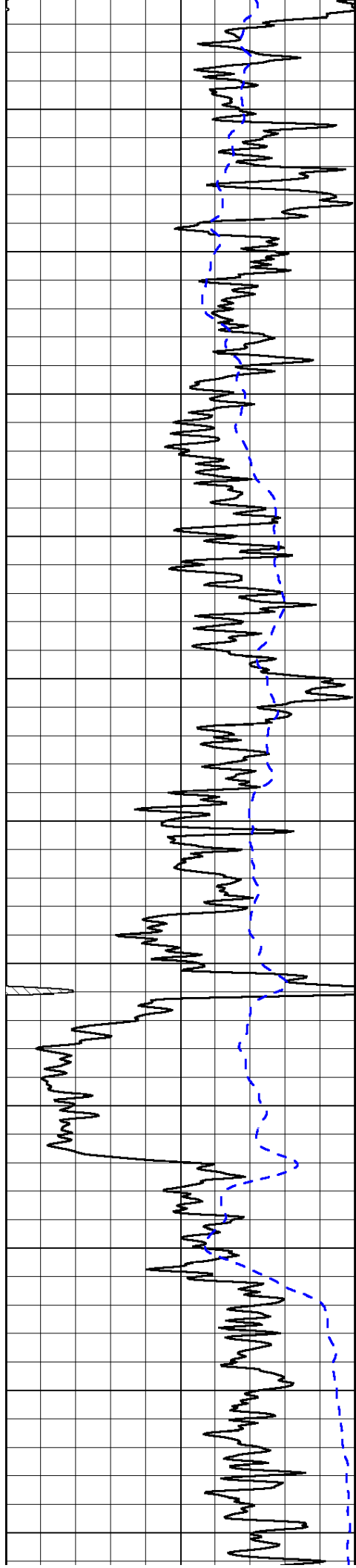
0	Shallow Resistivity	50
0	Deep Resistivity	50

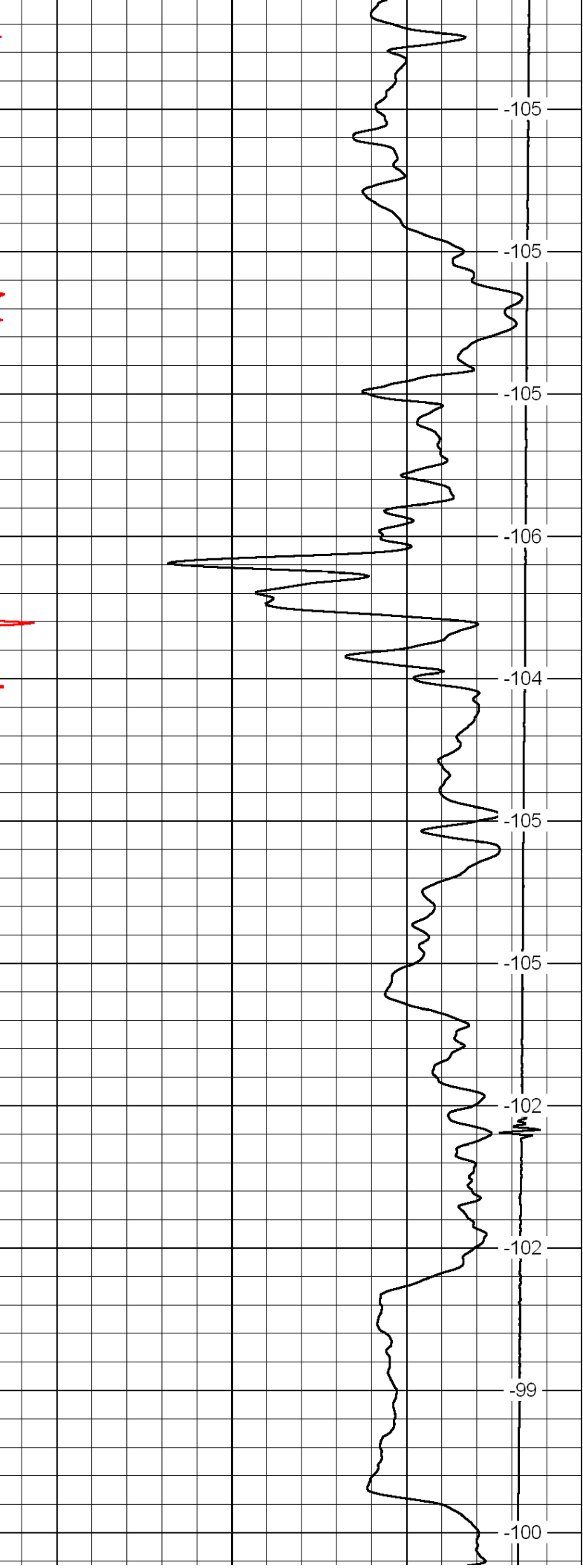
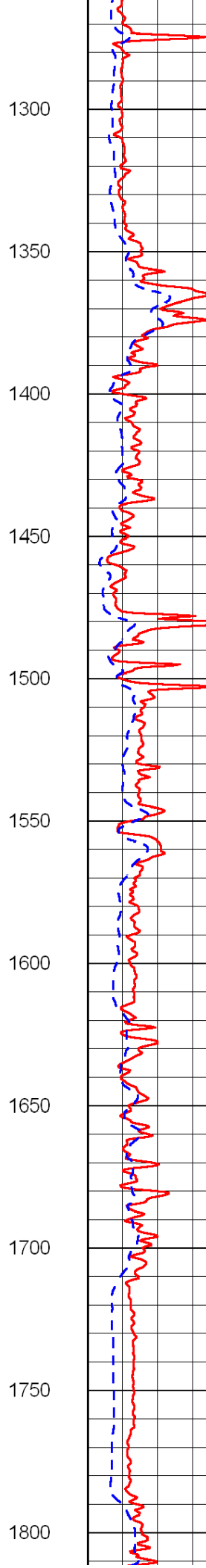
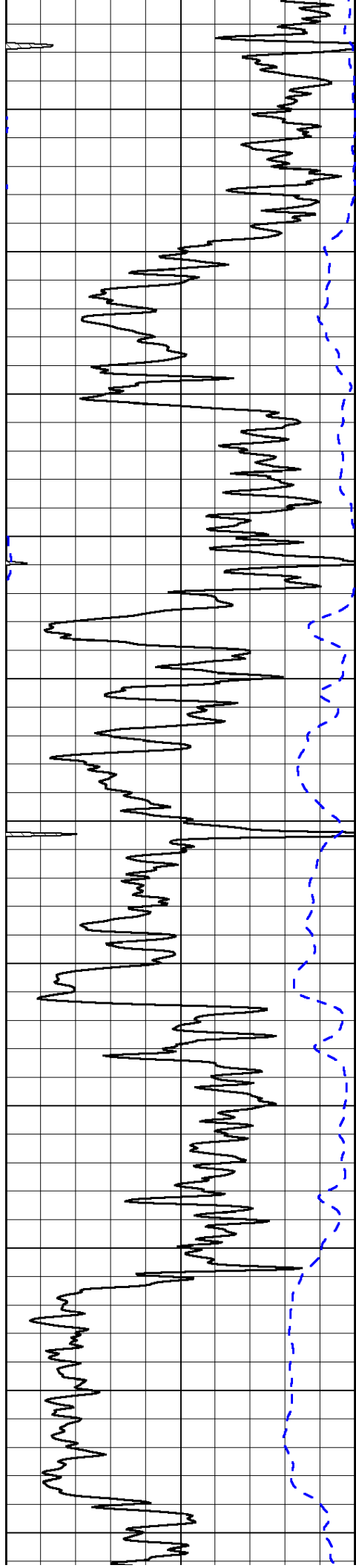
LSPD

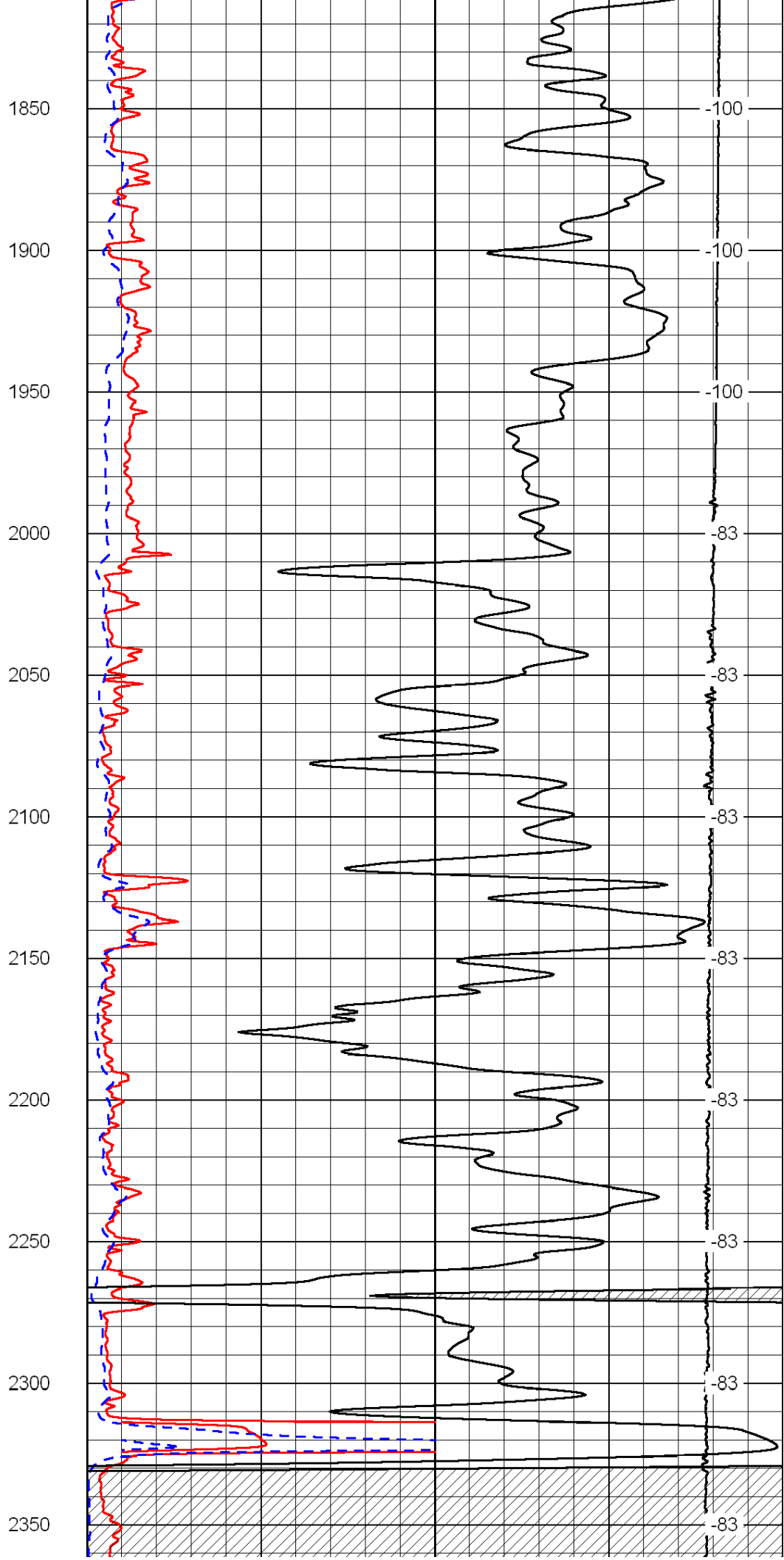
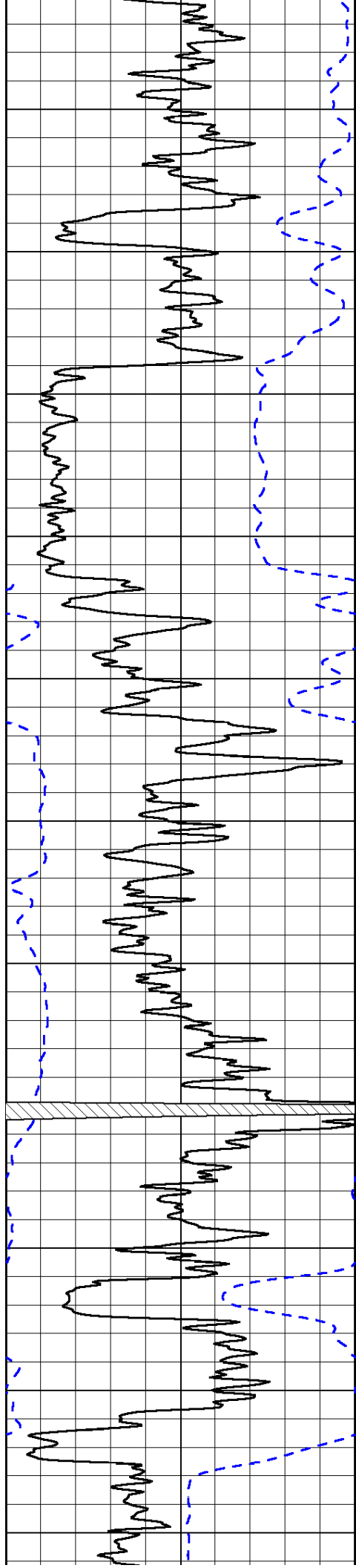
1000	Conductivity	0
15000	Line Tension	0

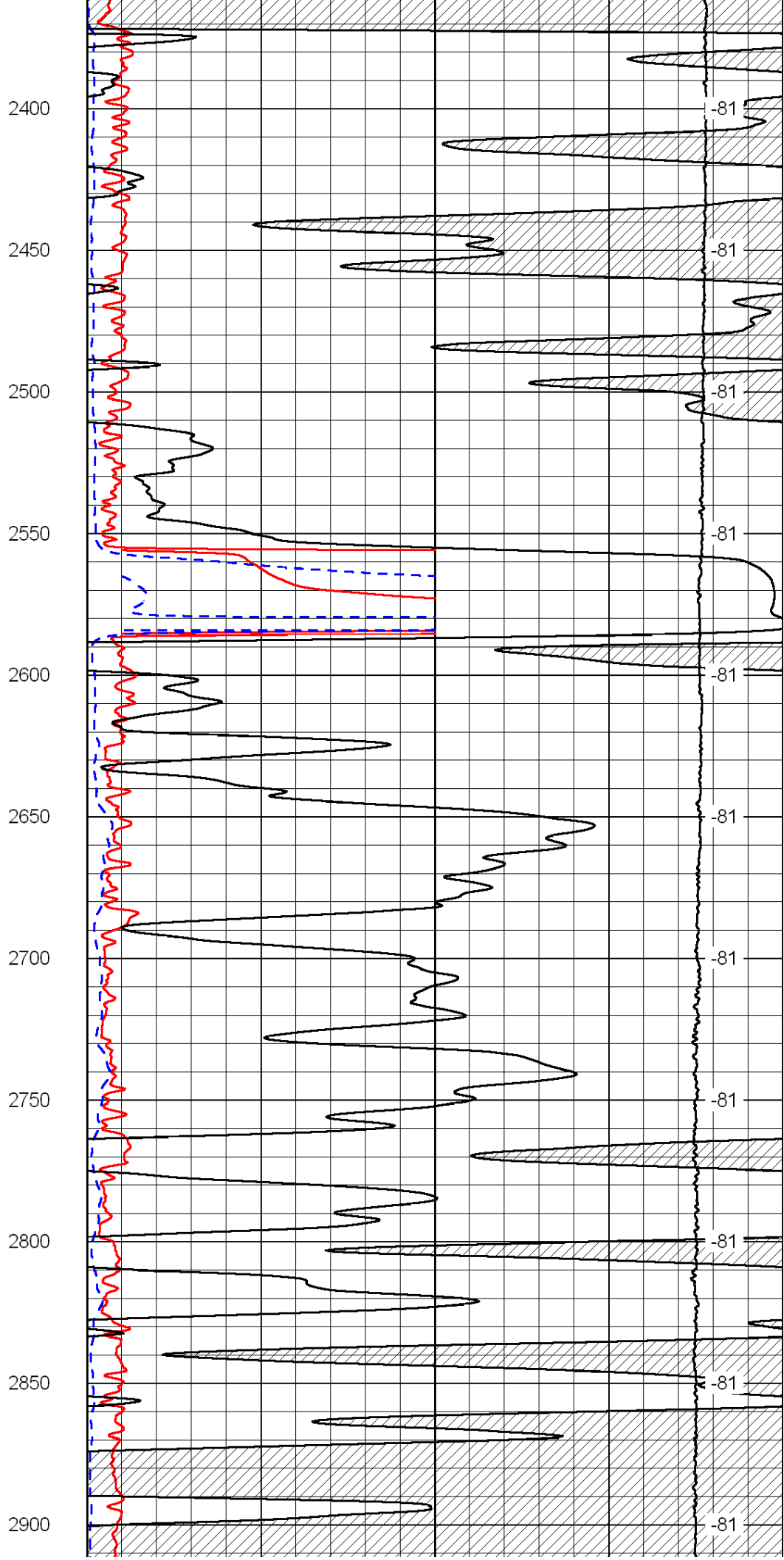
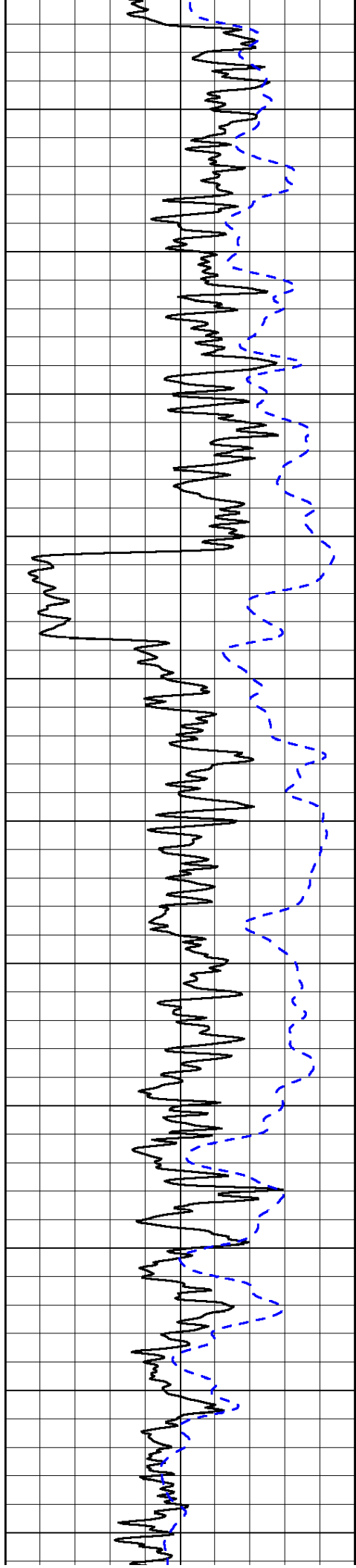
50	Shallow Resistivity	500
50	Deep Resistivity	500

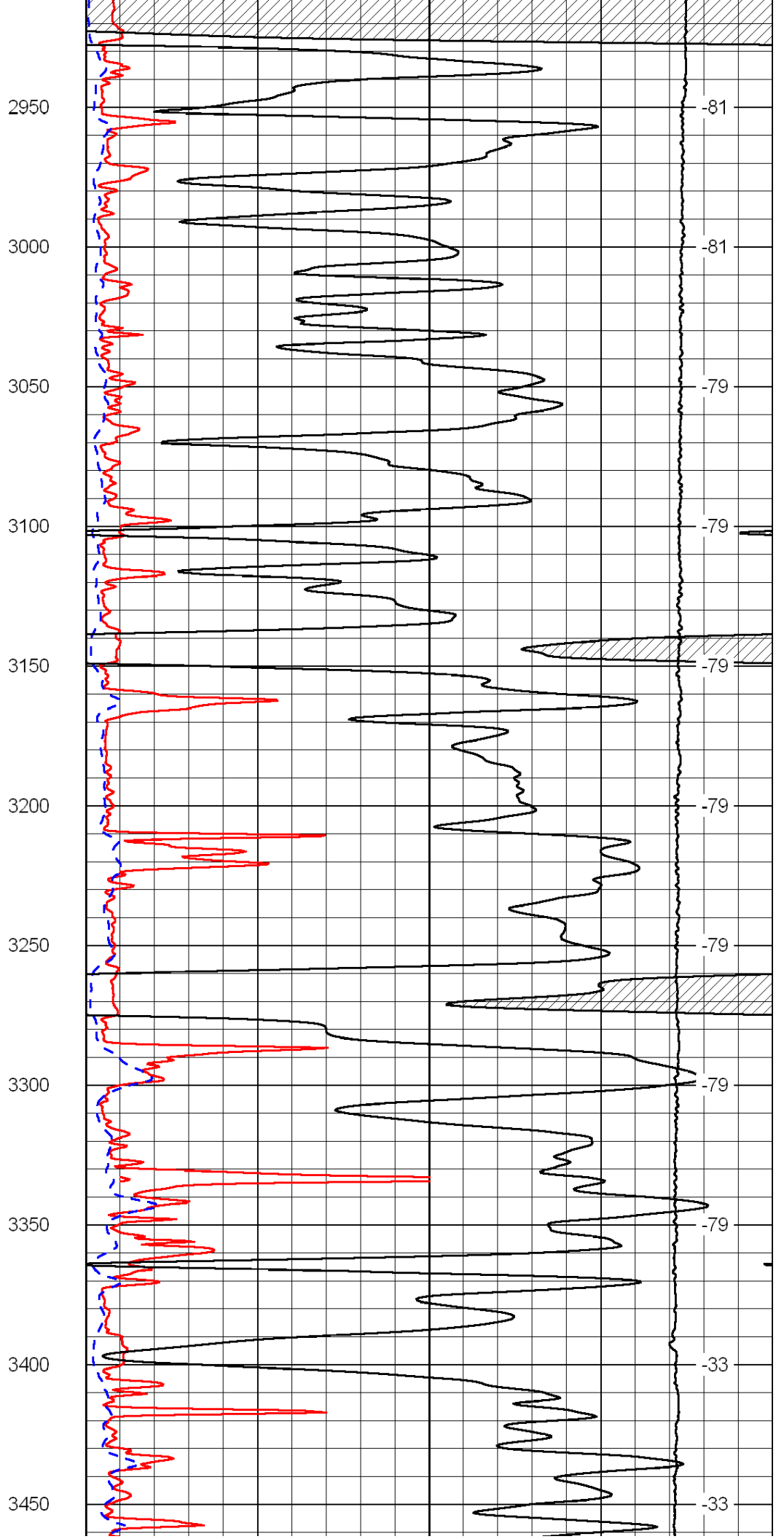
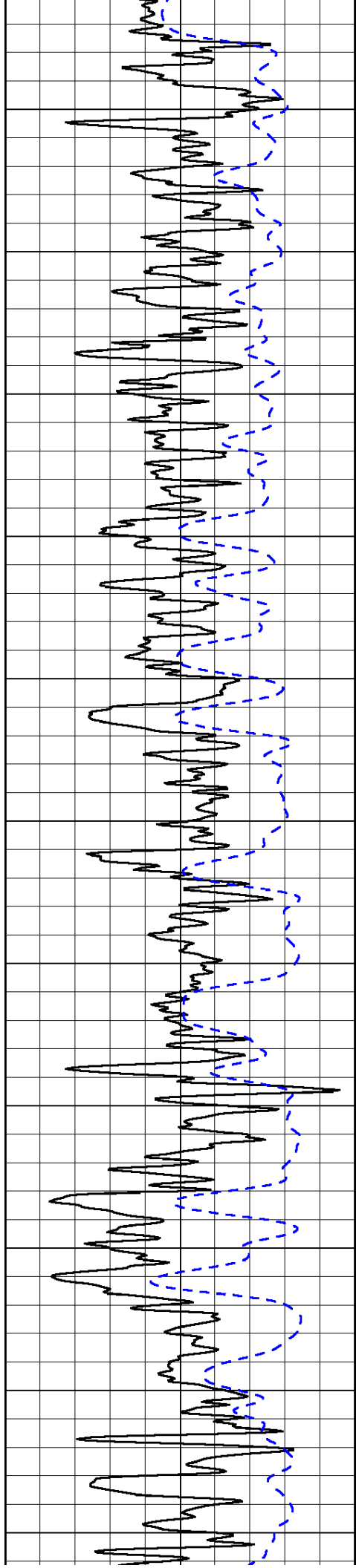


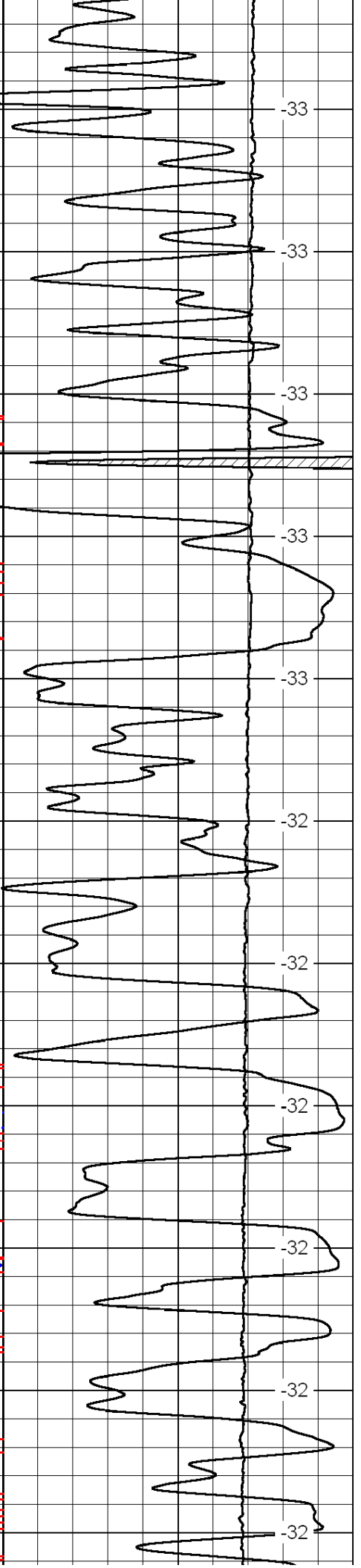
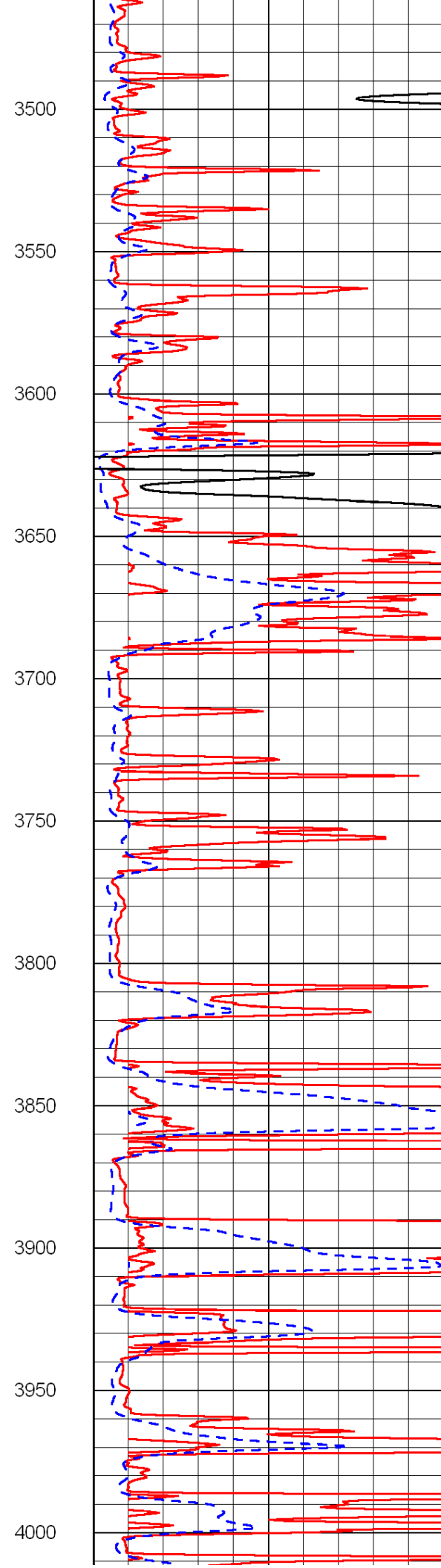
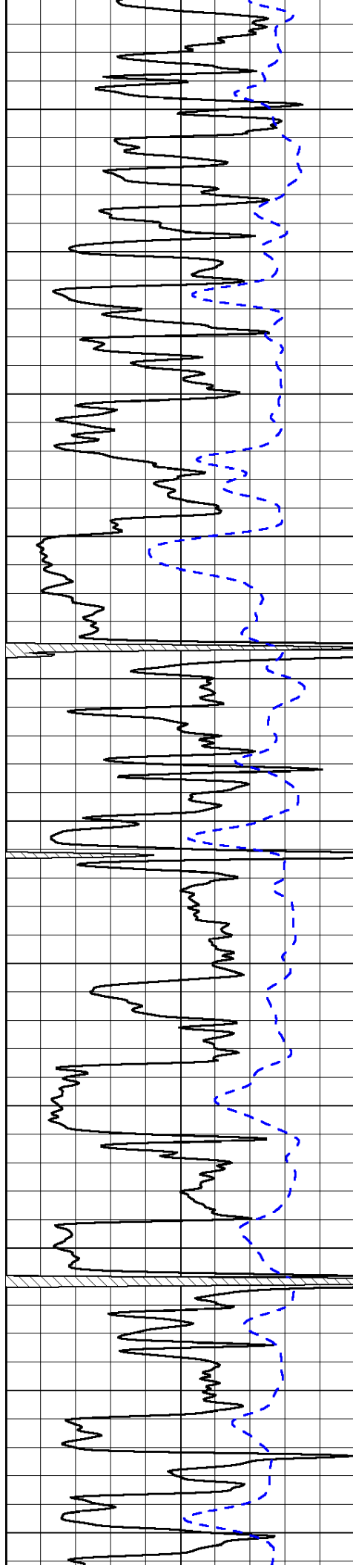


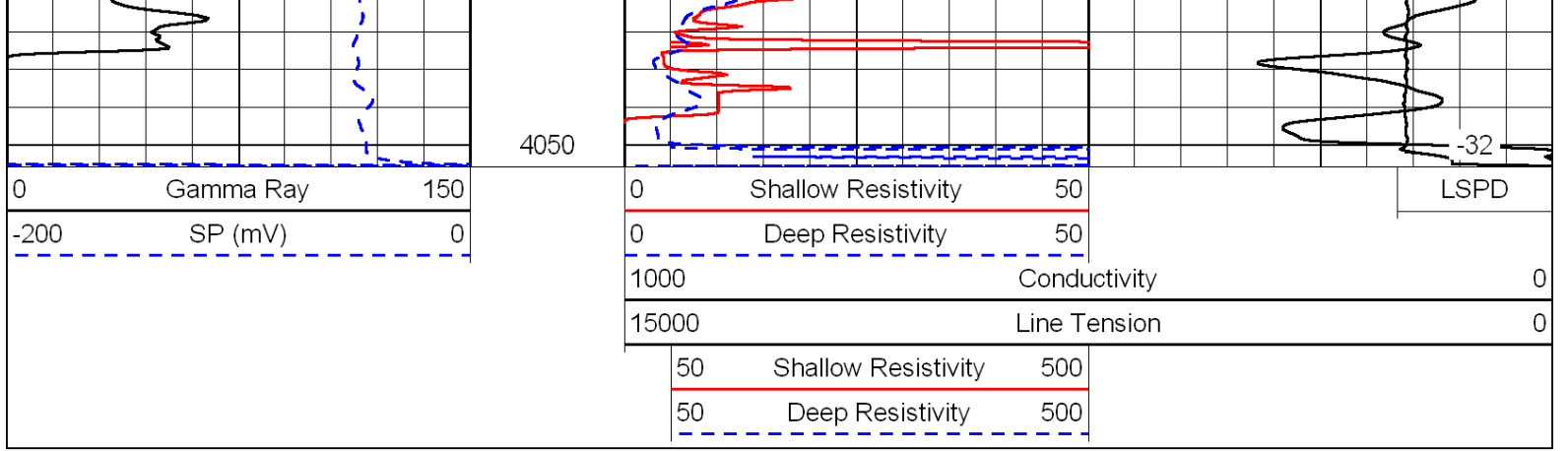




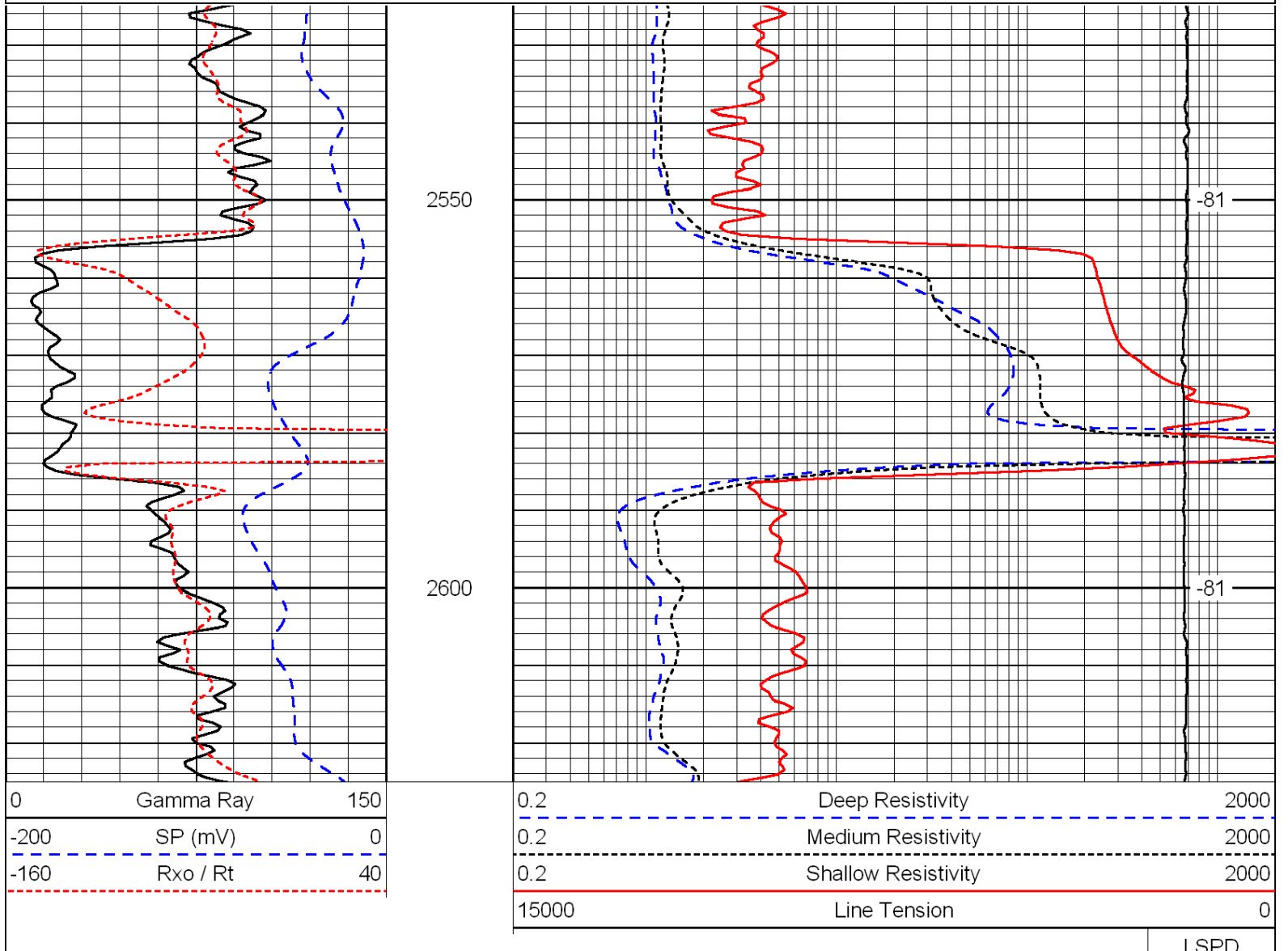
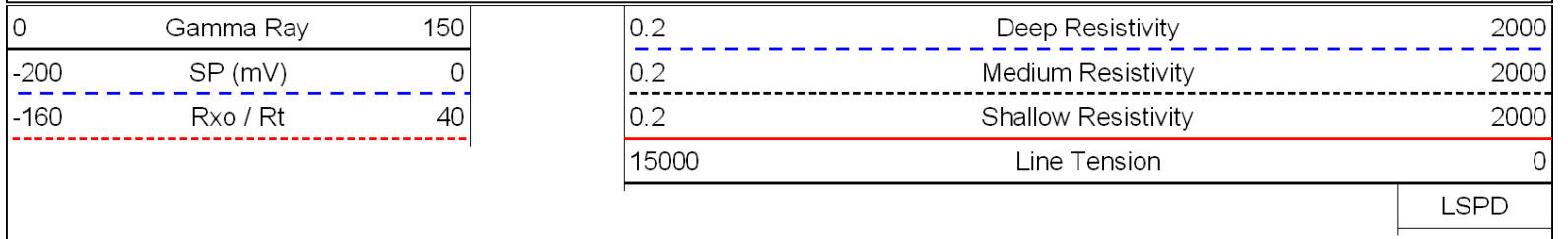








Database File: c:\warrior\data\cholla_kyte-jording no 1-14\chollahd.db
 Dataset Pathname: dil/chollastck
 Presentation Format: dil
 Dataset Creation: Sun Nov 07 07:01:42 2010
 Charted by: Depth in Feet scaled 1:240

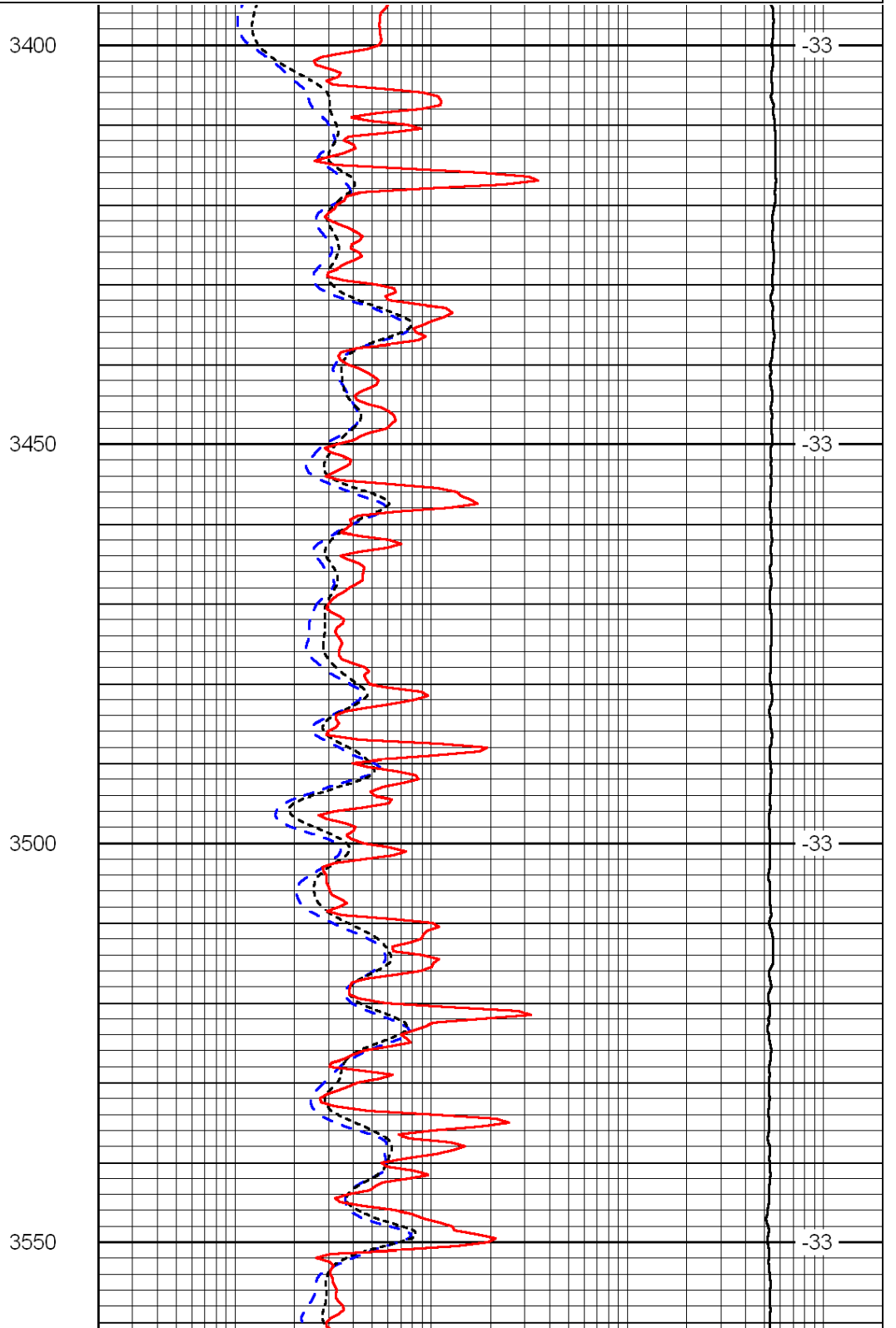
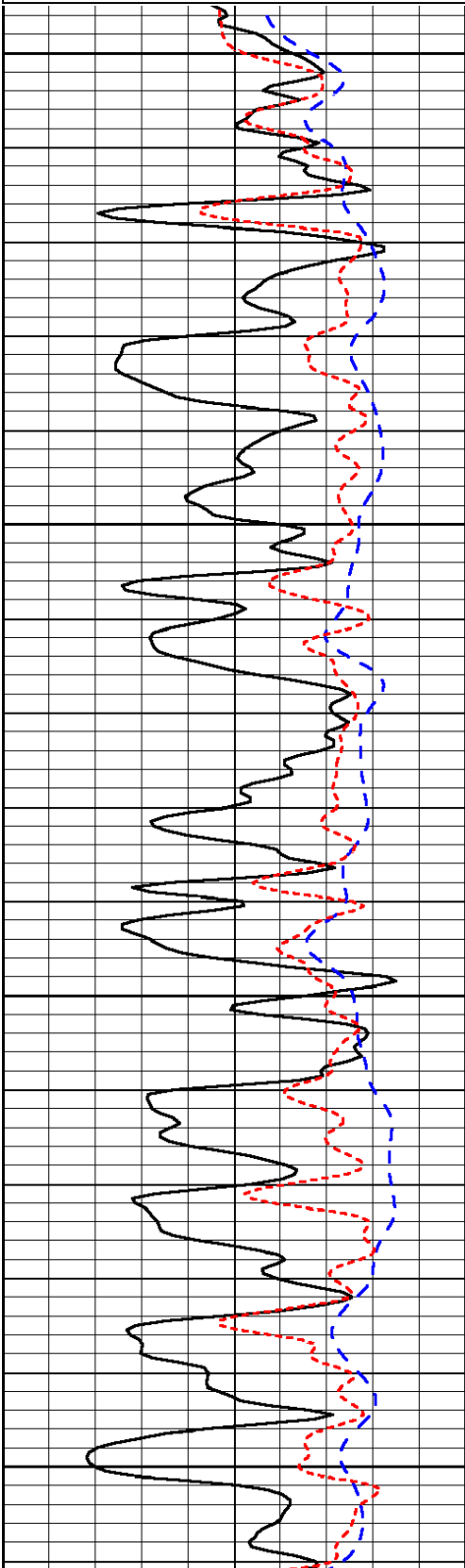


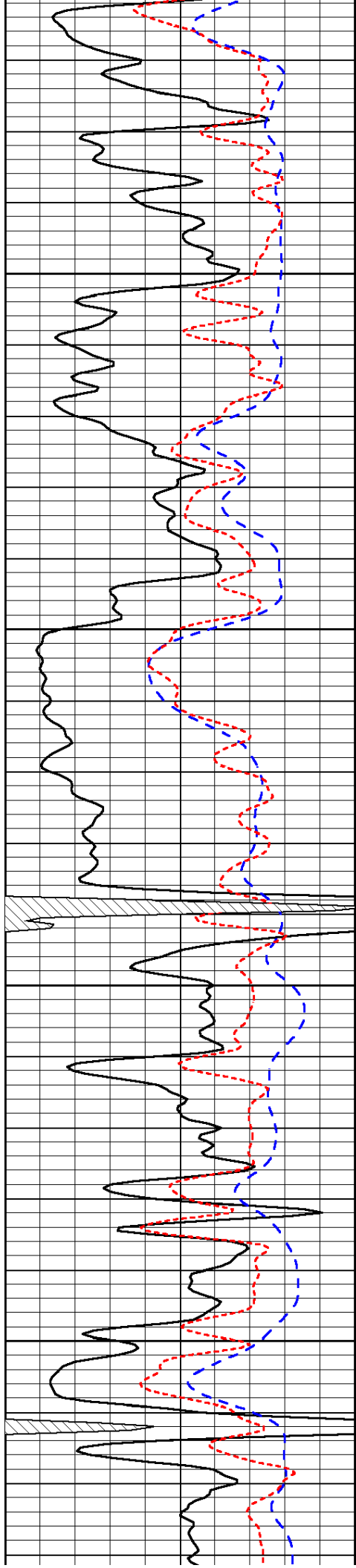
Database File: c:\warrior\data\cholla_kyte-jording no 1-14\cholla.d
 Dataset Pathname: dil/chollastck
 Presentation Format: dil
 Dataset Creation: Sun Nov 07 07:01:42 2010
 Charted by: Depth in Feet scaled 1:240

0	Gamma Ray	150
-200	SP (mV)	0
-160	Rxo / Rt	40

0.2	Deep Resistivity	2000
0.2	Medium Resistivity	2000
0.2	Shallow Resistivity	2000
15000	Line Tension	0

LSPD



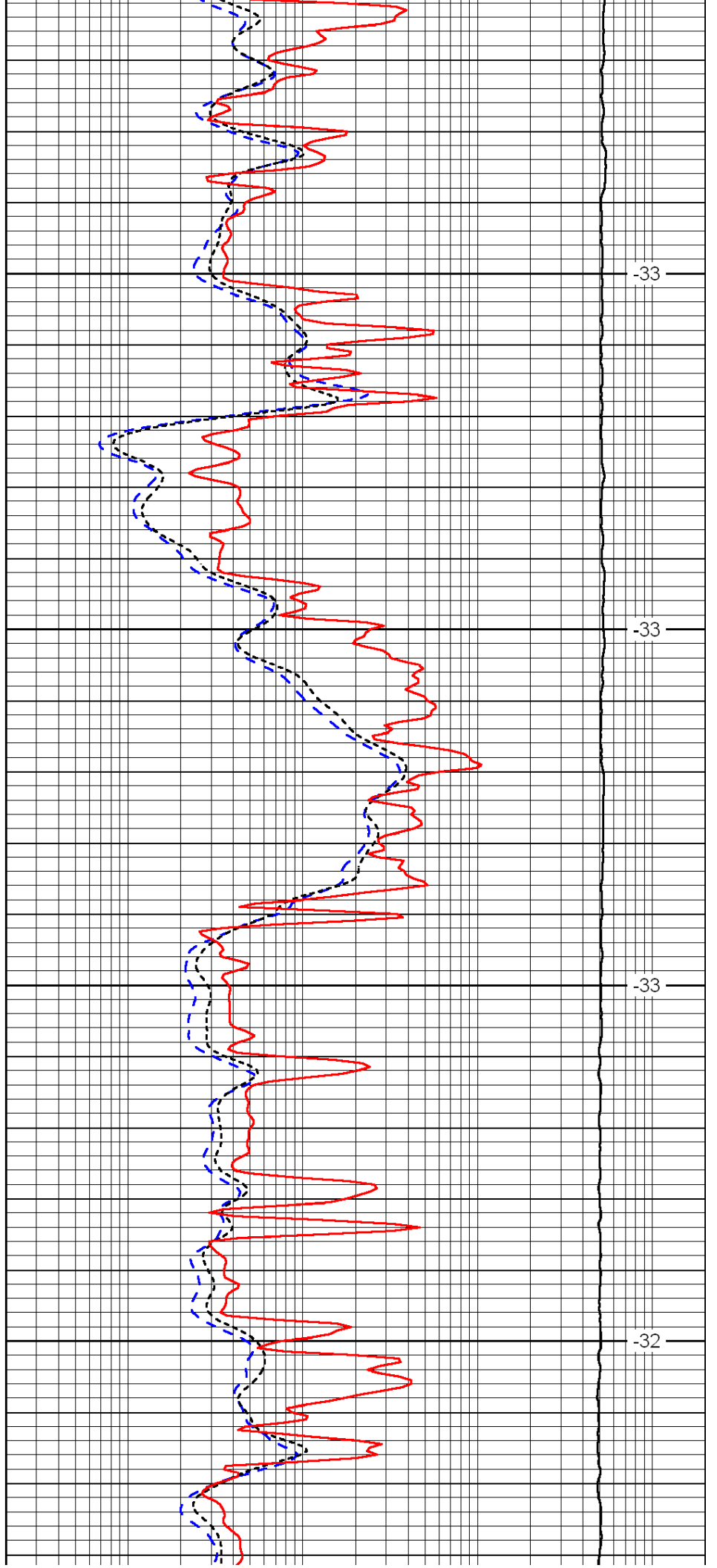


3600

3650

3700

3750

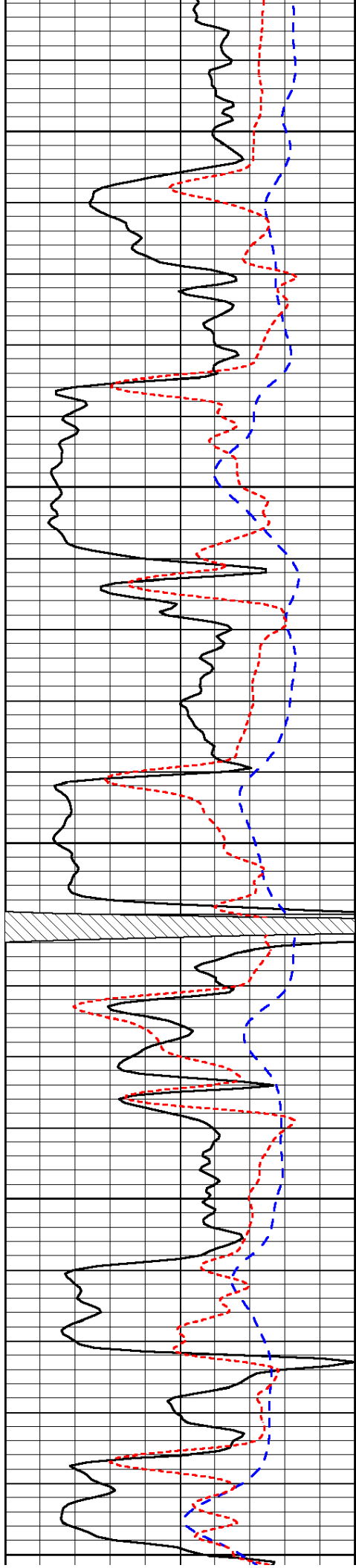


-33

-33

-33

-32



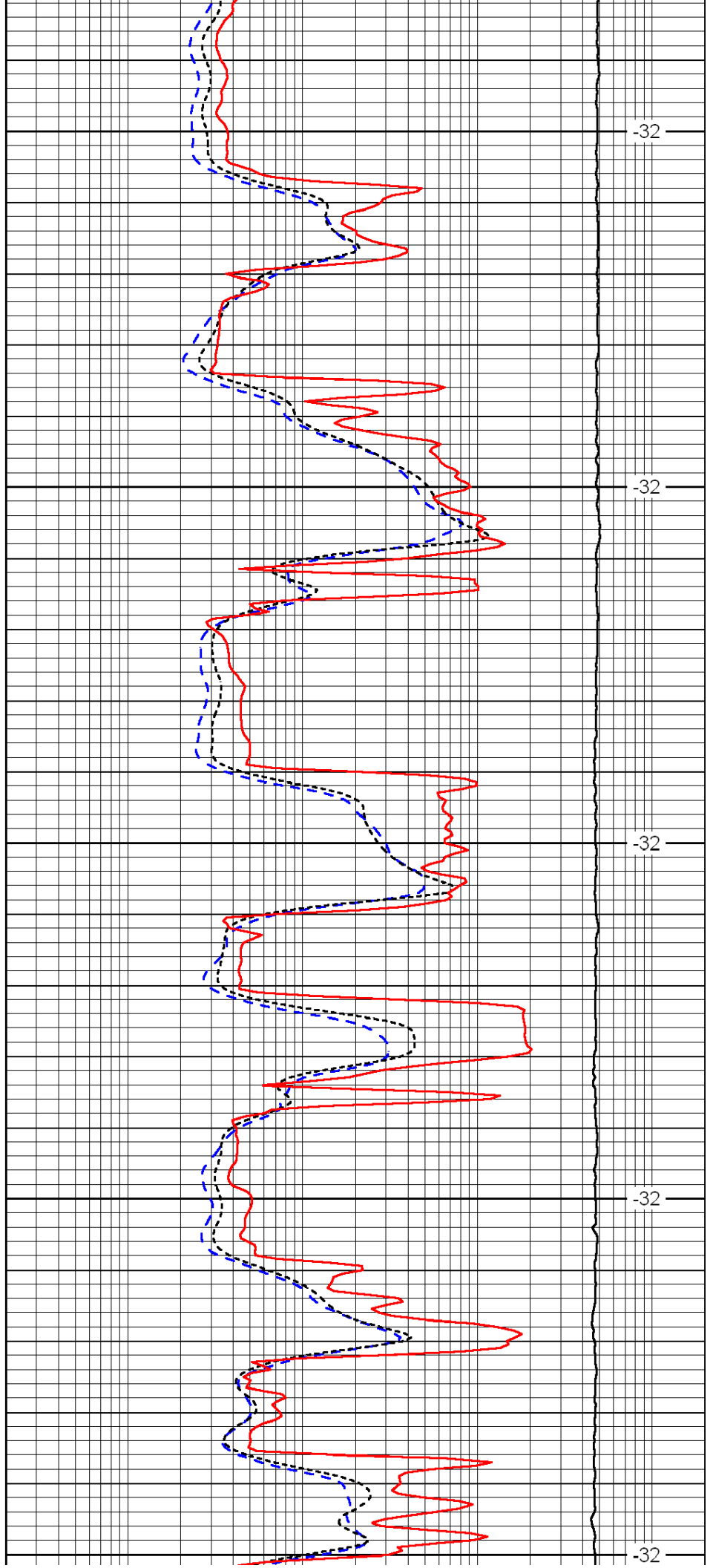
3800

3850

3900

3950

4000



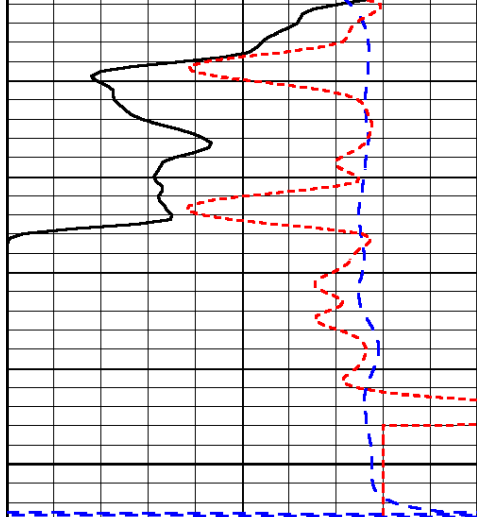
-32

-32

-32

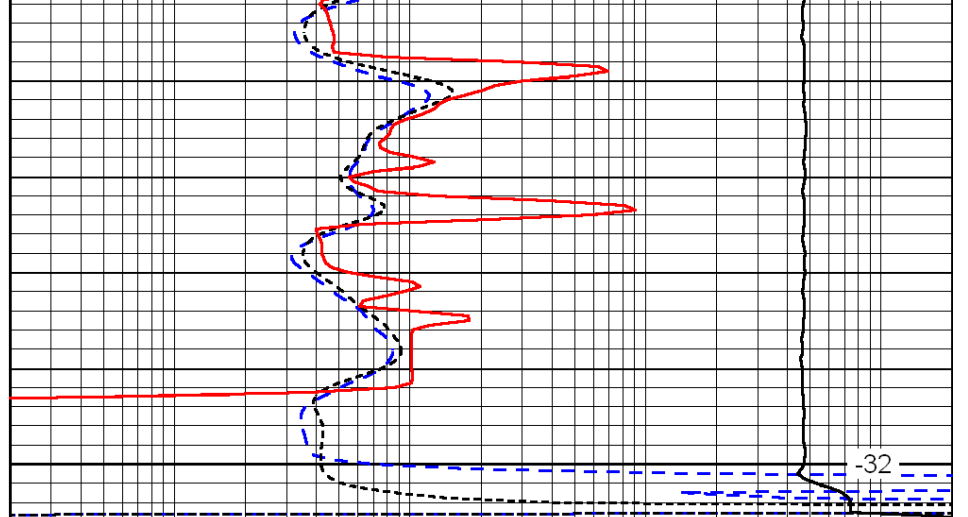
-32

-32



0	Gamma Ray	150
-200	SP (mV)	0
-160	Rxo / Rt	40

4050



0.2	Deep Resistivity	2000
0.2	Medium Resistivity	2000
0.2	Shallow Resistivity	2000
15000	Line Tension	0

-32

LSPD