



# Microresistivity Log

**DIGITAL LOG** (785) 625-3858

API No.	15-109-20,942-00-00		
Company	Russell Oil, Inc.		
Well	McDaniel N Unit No.1		
Field	McDaniel		
County	Logan	State	Kansas
Location	2090' FSL & 2640' FWL		
Sec: 28	Twp: 15S	Rge: 34W	
Permanent Datum	Ground Level	Elevation 3018	Other Services CNL/CDL DIL
Log Measured From	Kelly Bushing	11 Ft. Above Perm. Datum	
Drilling Measured From	Frotkelly Bushing		K.B. 3029 D.F. 3018 G.L.

Date	10/16/2010
Run Number	Two
Depth Driller	4800
Depth Logger	4803
Bottom Logged Interval	4802
Top Log Interval	3500
Casing Driller	8.625 @ 230
Casing Logger	224
Bit Size	7.875
Type Fluid in Hole	Chemical
Salinity, ppm CL	5.500
Density / Viscosity	9.4 54
pH / Fluid Loss	10.0 10.4
Source of Sample	Flowline
Rm @ Meas. Temp	.7 @ 68
Rmf @ Meas. Temp	.53 @ 68
Rmc @ Meas. Temp	.95 @ 68
Source of Rmf / Rmc	Charts
Rm @ BHT	.38 @ 124
Operating Rig Time	4 Hours
Max Rec. Temp. F	124
Equipment Number	15
Location	Hays
Recorded By	C. Desaire
Witnessed By	Kevin Bailey

<<< Fold Here >>>

All interpretations are opinions based on inferences from electrical or other measurements and we cannot and do not guarantee the accuracy or correctness of any interpretation, and we shall not, except in the case of gross or willful negligence on our part, be liable or responsible for any loss, costs, damages, or expenses incurred or sustained by anyone resulting from any interpretation made by any of our officers, agents or employees. These interpretations are also subject to our general terms and conditions set out in our current Price Schedule.

### Comments

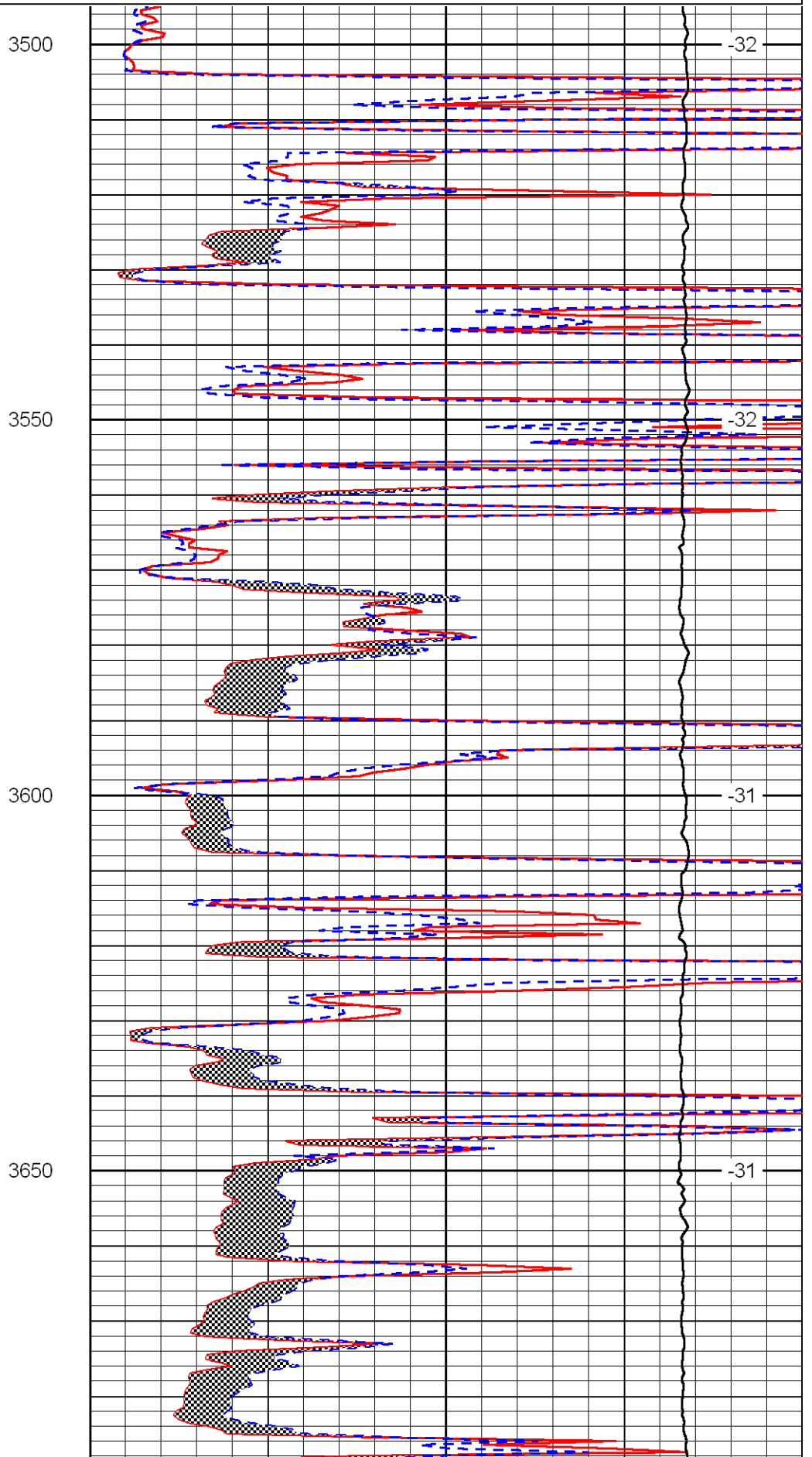
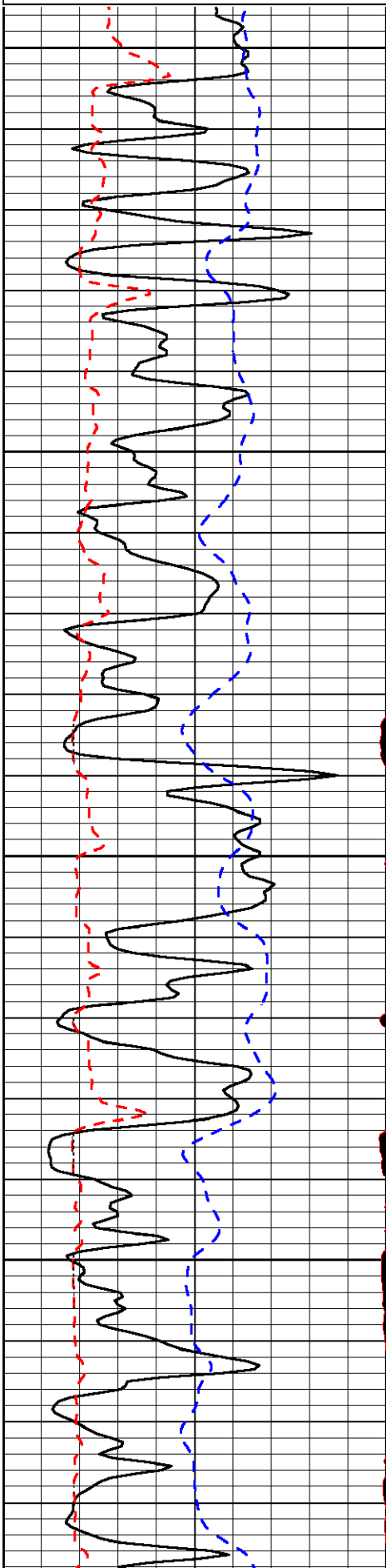
Thank you for using Log-Tech, Inc.  
(785) 625-3858

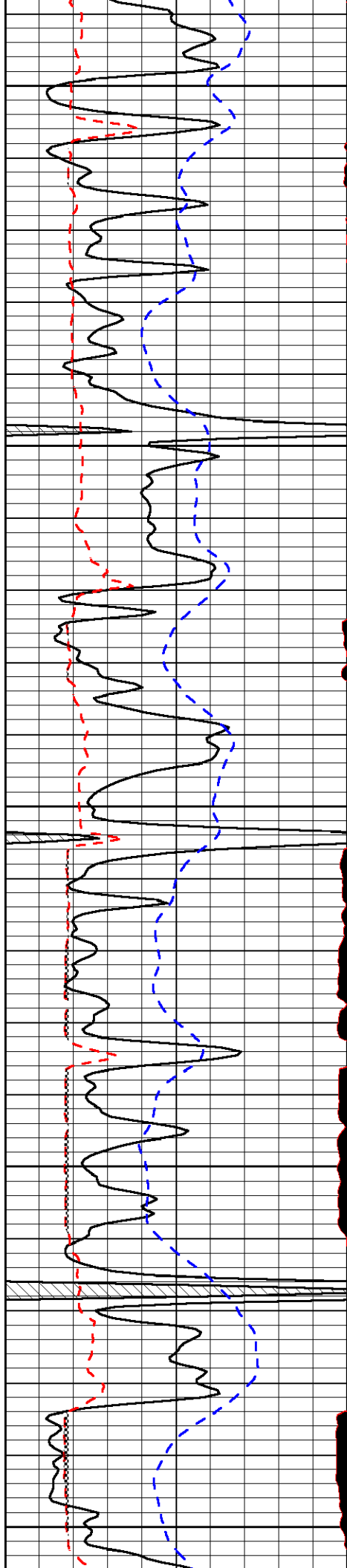
Pence Ks, 3 W, 4 N, 1 1/2 E, N Into

Database File: russhd.db  
 Dataset Pathname: dil/russtk  
 Presentation Format: micro  
 Dataset Creation: Sat Oct 16 05:01:29 2010  
 Charted by: Depth in Feet scaled 1:240

0	Gamma Ray	150
6	MCAL (GAPI)	16
2.875	Mud Cake (GAPI)	7.875
-200	SP	0

0	Micro Inverse 1 X 1	40
0	Micro Normal 2"	40
10000	Line Weight	0
		LSPD





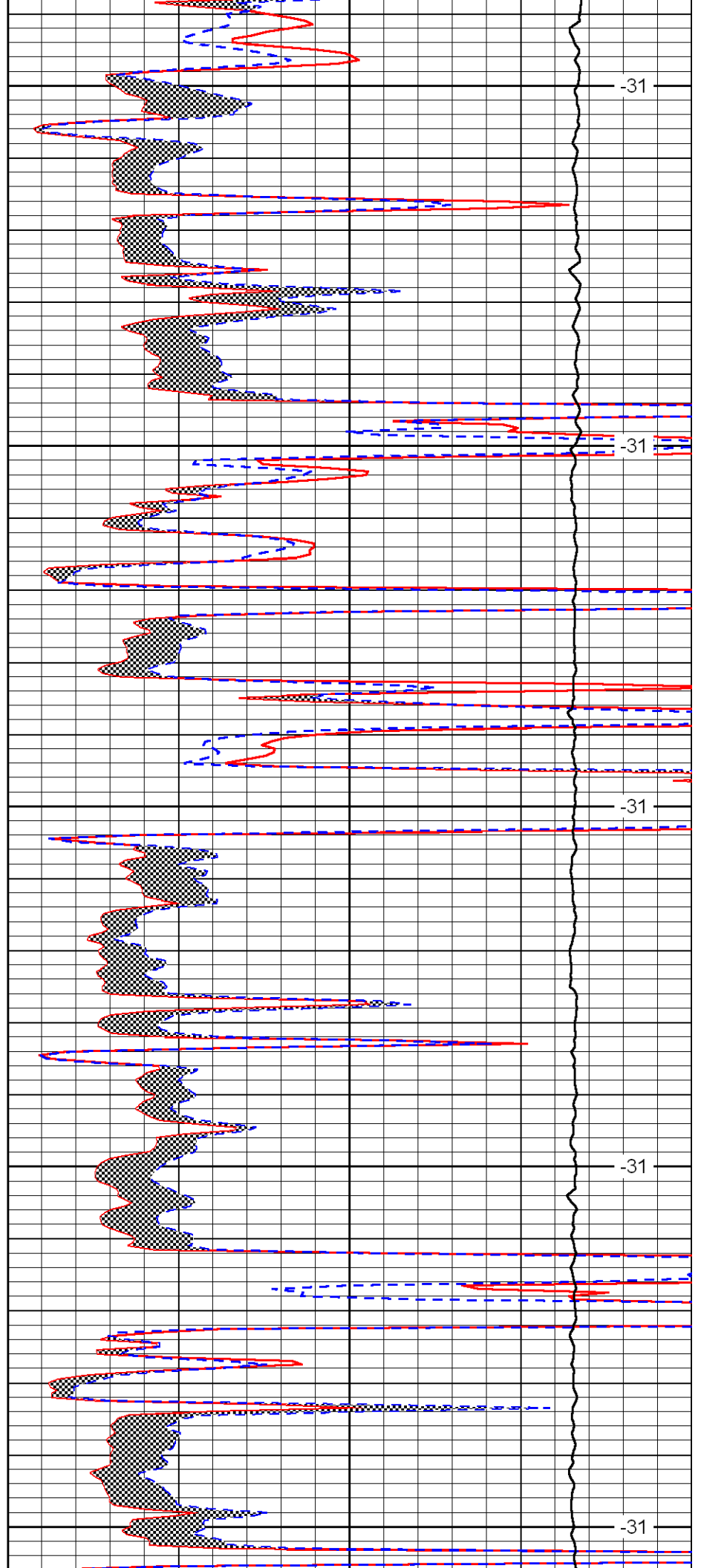
3700

3750

3800

3850

3900



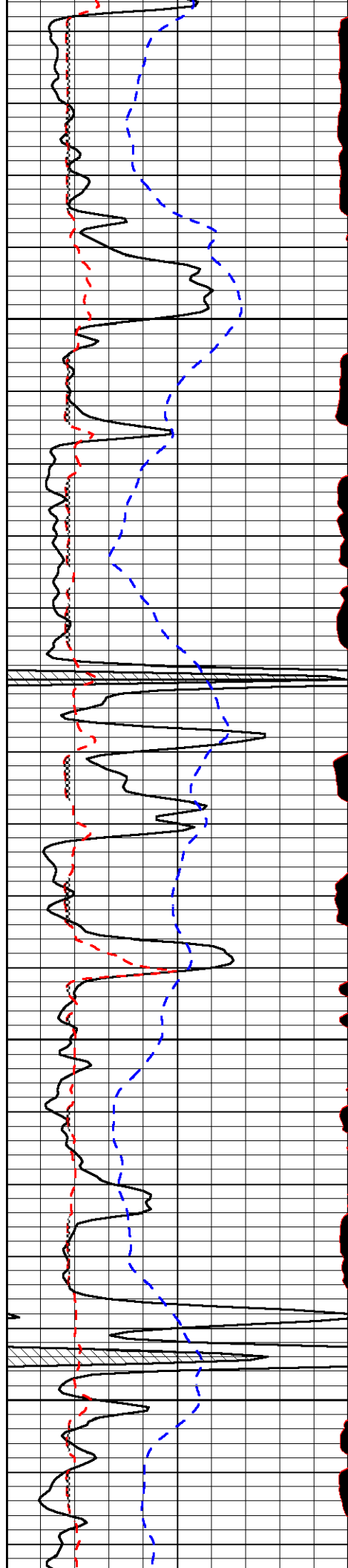
-31

-31

-31

-31

-31

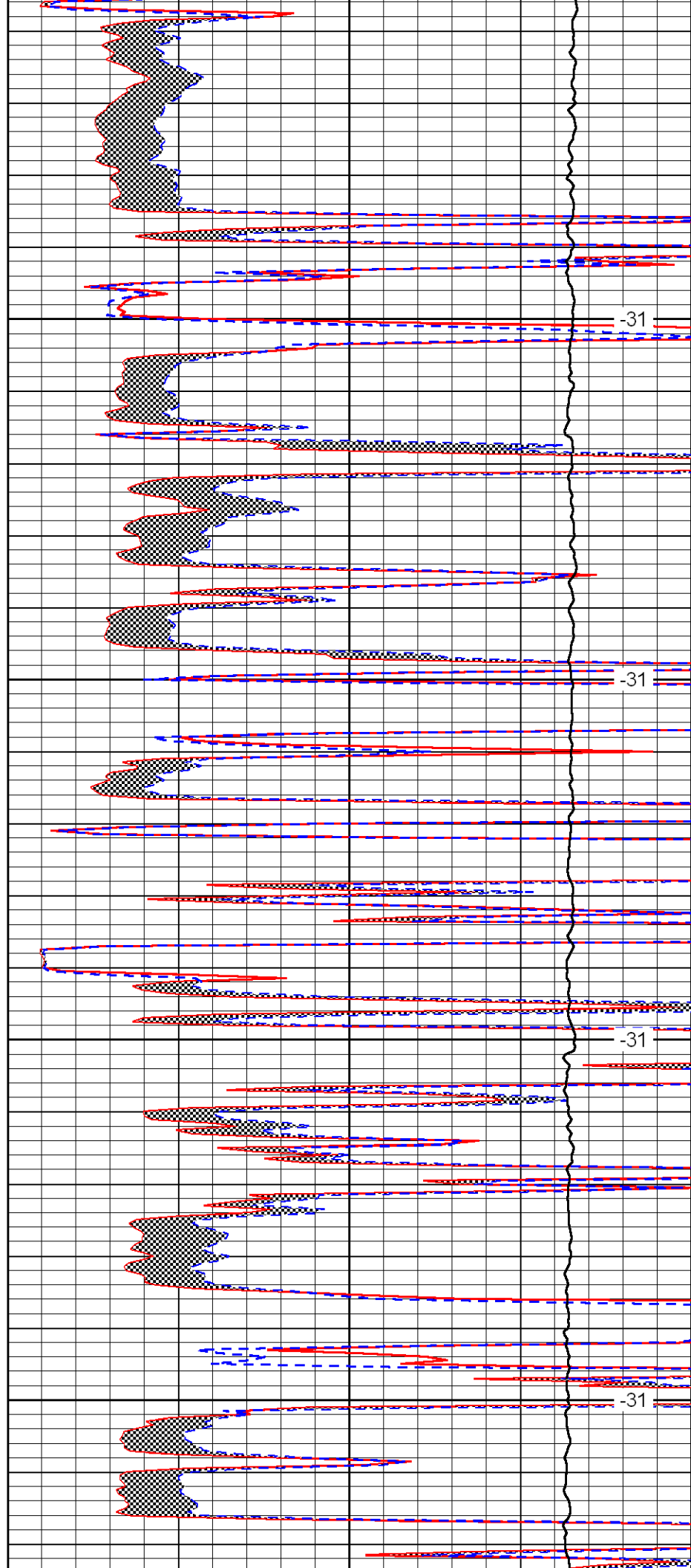


3950

4000

4050

4100

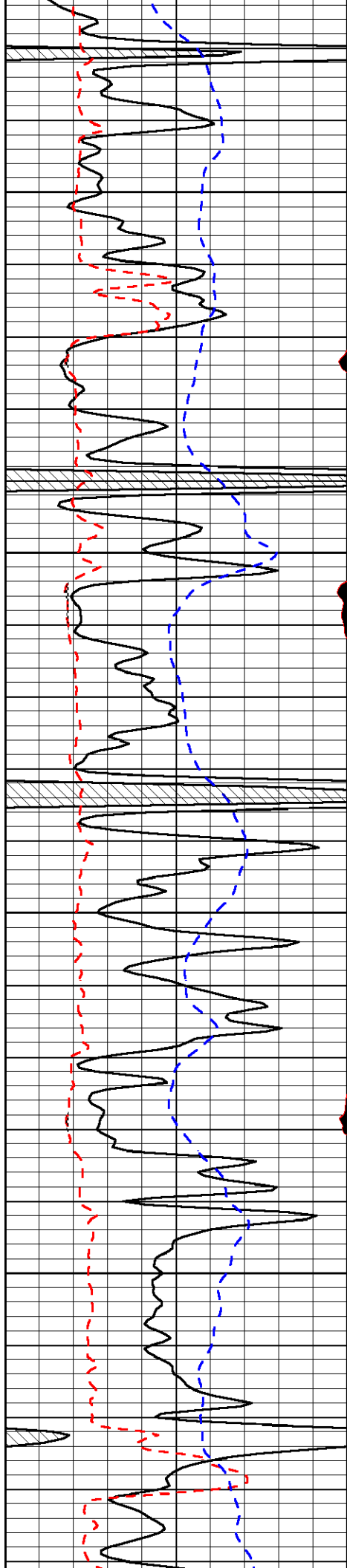


-31

-31

-31

-31

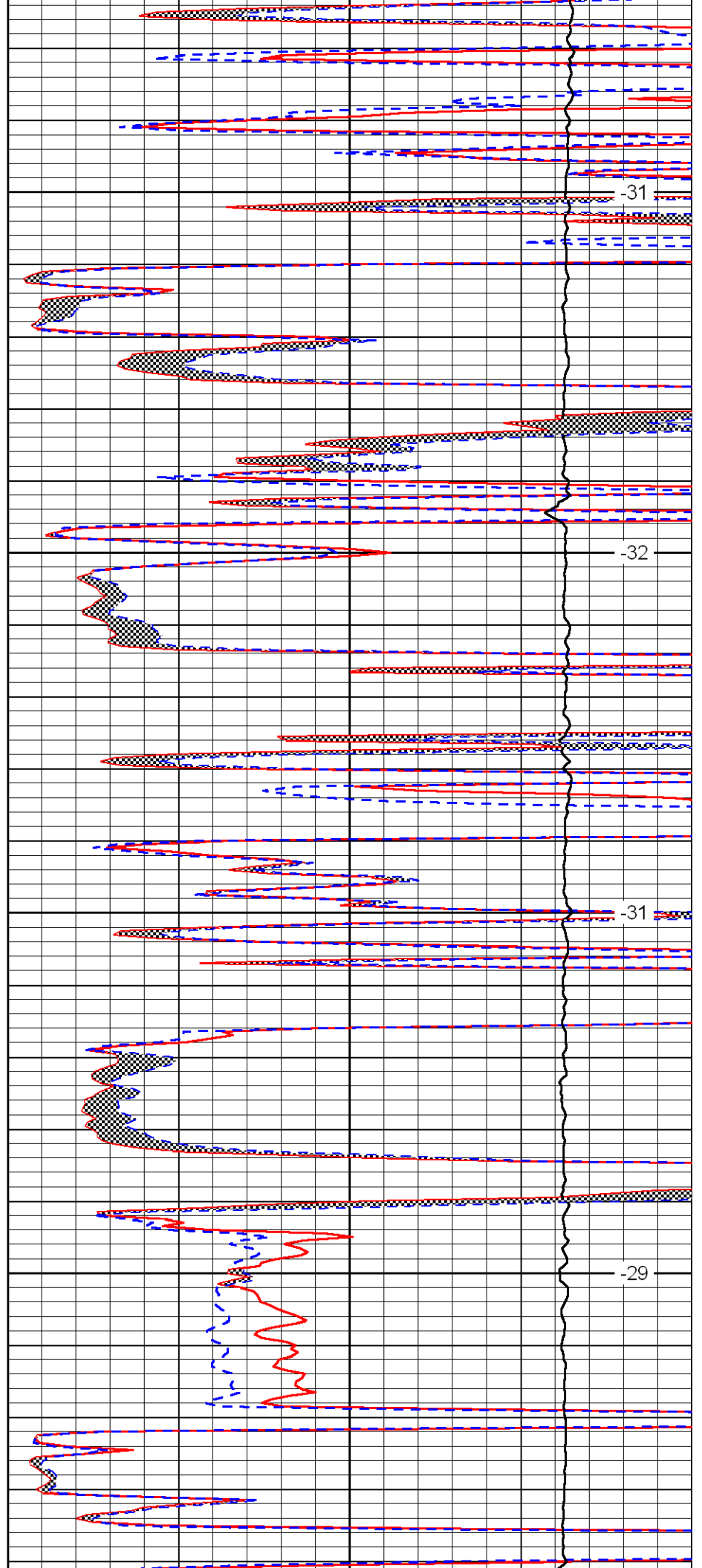


4150

4200

4250

4300

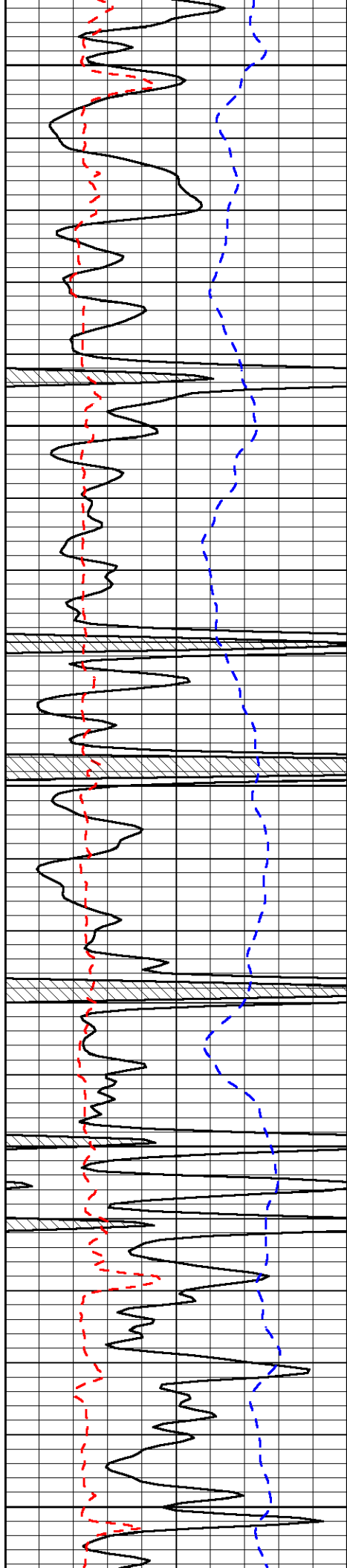


-31

-32

-31

-29



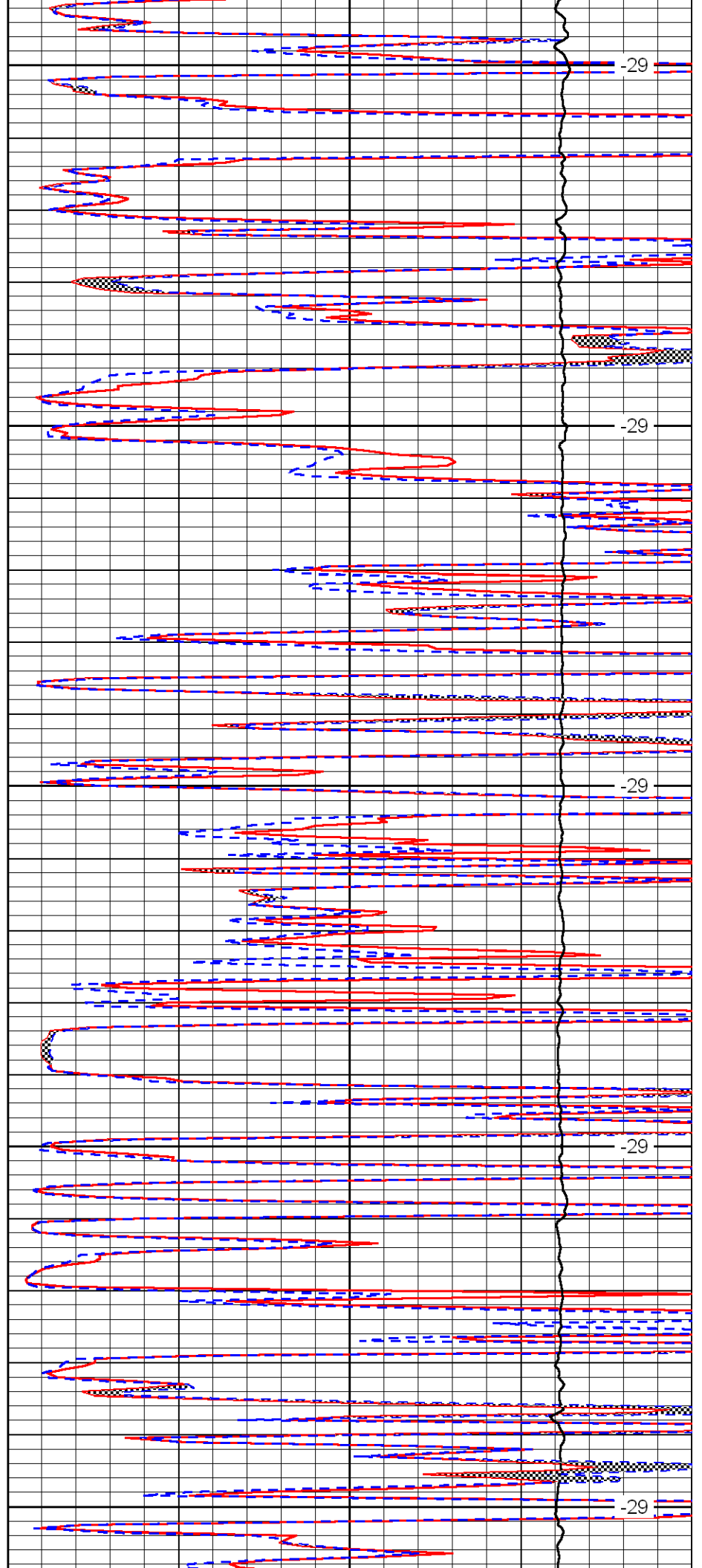
4350

4400

4450

4500

4550



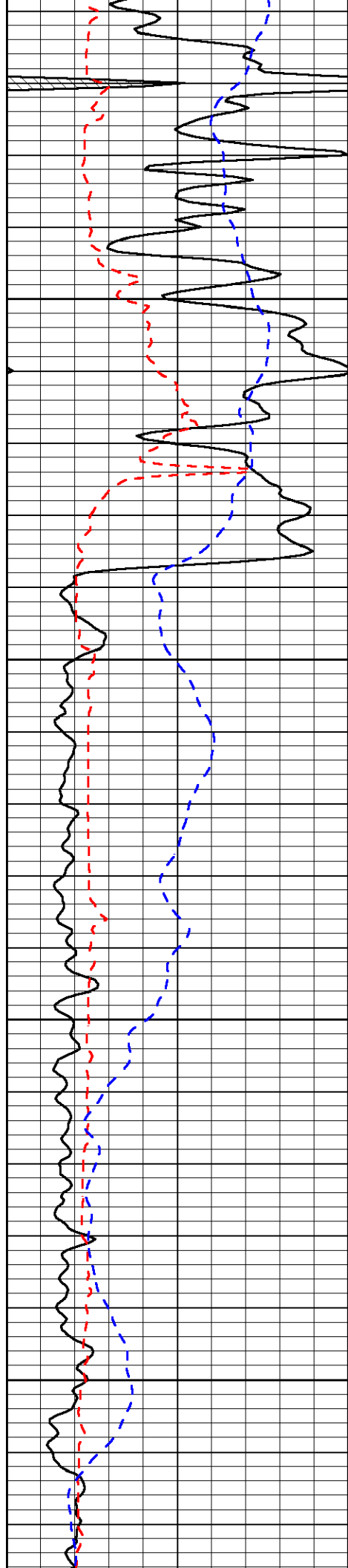
-29

-29

-29

-29

-29

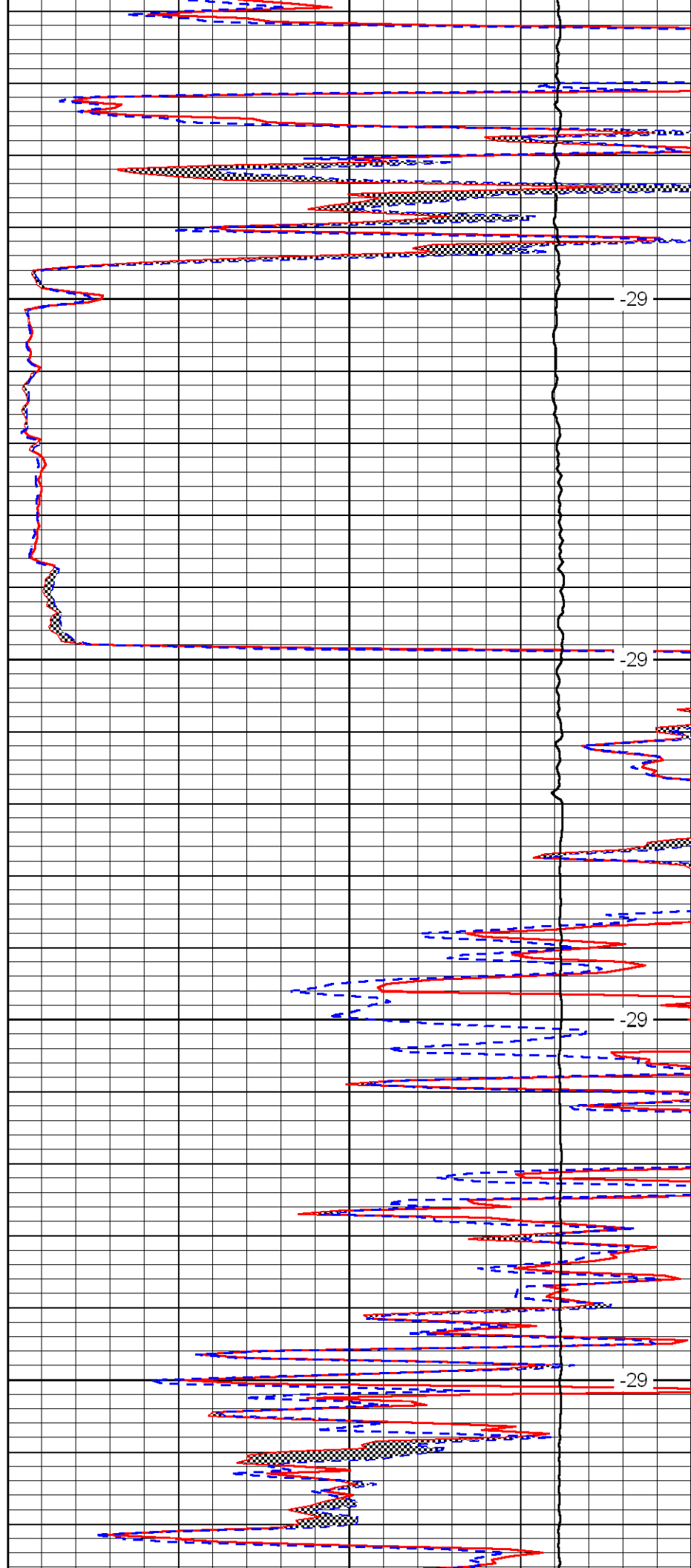


4600

4650

4700

4750

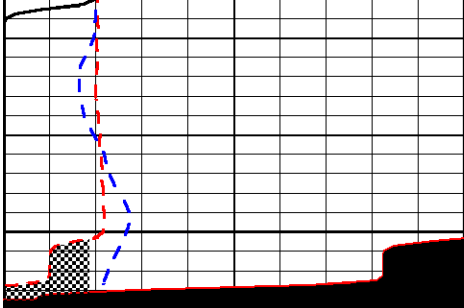


-29

-29

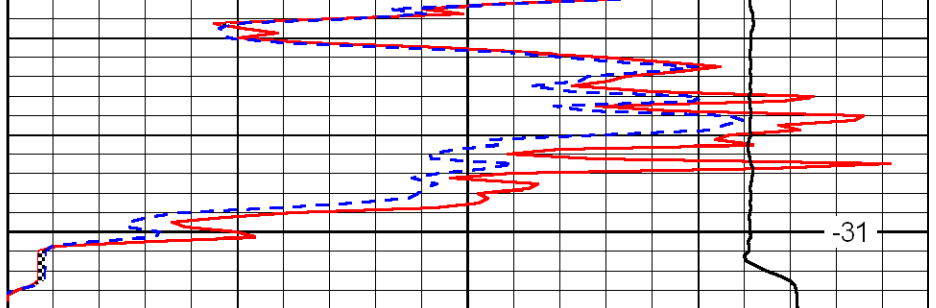
-29

-29



0	Gamma Ray	150
6	MCAL (GAPI)	16
2.875	Mud Cake (GAPI)	7.875
-200	SP	0

4800



0	Micro Inverse 1 X 1	40
0	Micro Normal 2''	40
10000	Line Weight	0

-31

LSPD