



DIGITAL LOG (785) 625-3858

Dual Induction Log

API No. 15-185-23,646-00-00

Company L.D. Drilling, Inc.  
 Well Siefkes "B" No. 15-3  
 Field Max  
 County Stafford State Kansas

Location 1206' FNL & 980' FWL

Sec: 3 Twp: 22 S Rge: 12 W

Other Services  
 CNL/CDL  
 MEL

Permanent Datum	Ground Level	Elevation 1852	
Log Measured From	Kelly Bushing	5 Ft. Above Perm. Datum	K.B. 1857
Drilling Measured From	Kelly Bushing		D.F. 1853
Date	11/08/2010		G.L. 1853
Run Number	One		
Depth Driller	3718		
Depth Logger	3717		
Bottom Logged Interval	3716		
Top Log Interval	350		
Casing Driller	8.625 @ 395		
Casing Logger	393		
Bit Size	7.875		
Type Fluid in Hole	Chemical		
Salinity, ppm CL	8.000		
Density / Viscosity	9.4   50		
pH / Fluid Loss	9.0   10.8		
Source of Sample	Flowline		
Rm @ Meas. Temp	.45 @ 65		
Rmf @ Meas. Temp	.34 @ 65		
Rmc @ Meas. Temp	.61 @ 65		
Source of Rmf / Rmc	Charts		
Rm @ BHT	.25 @ 115		
Operating Rig Time	4 Hours		
Max Rec. Temp. F	115		
Equipment Number	4		
Location	Hays		
Recorded By	K. Bange		
Witnessed By	Josh Austin		

<<< Fold Here >>>

All interpretations are opinions based on inferences from electrical or other measurements and we cannot and do not guarantee the accuracy or correctness of any interpretation, and we shall not, except in the case of gross or willful negligence on our part, be liable or responsible for any loss, costs, damages, or expenses incurred or sustained by anyone resulting from any interpretation made by any of our officers, agents or employees. These interpretations are also subject to our general terms and conditions set out in our current Price Schedule.

Comments

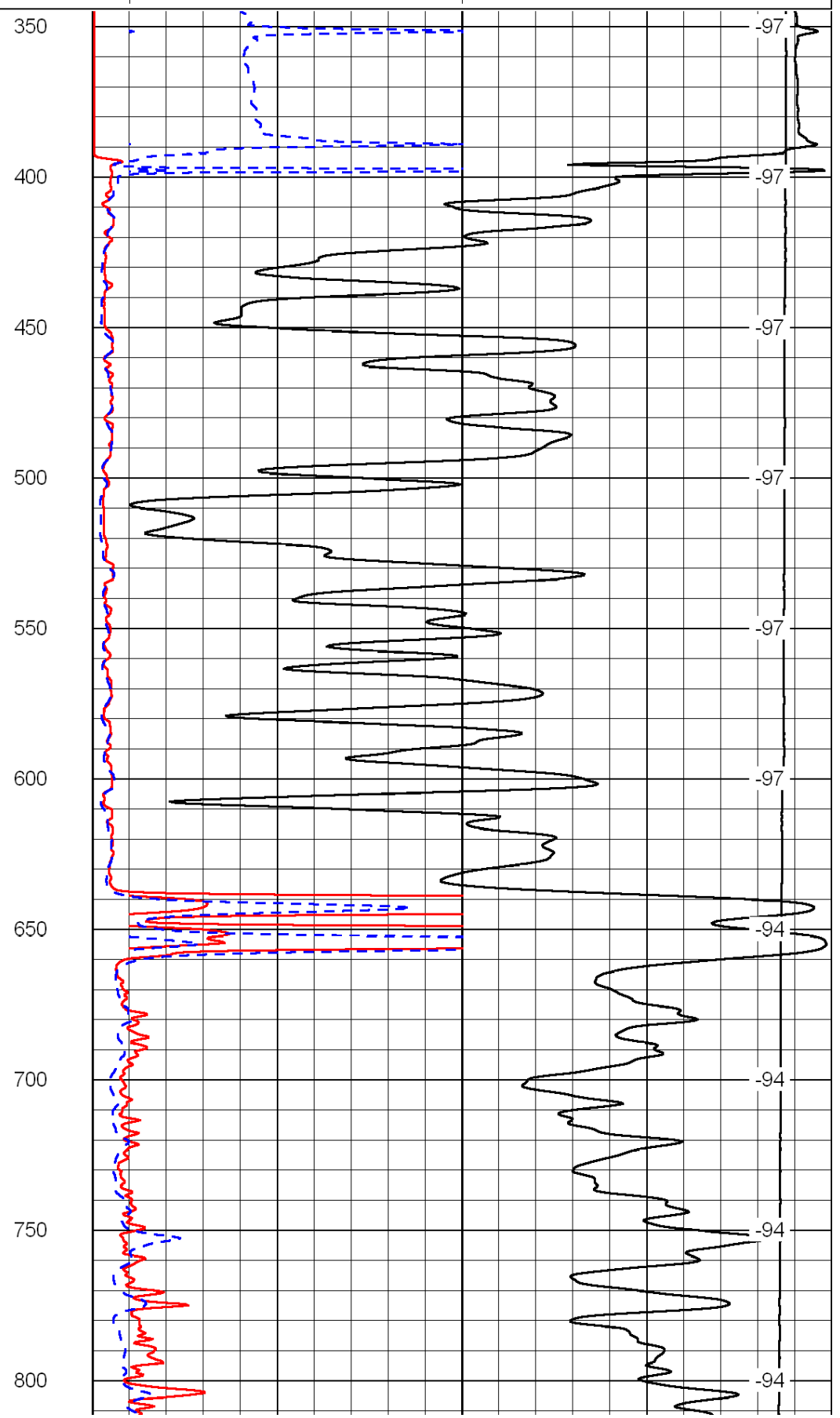
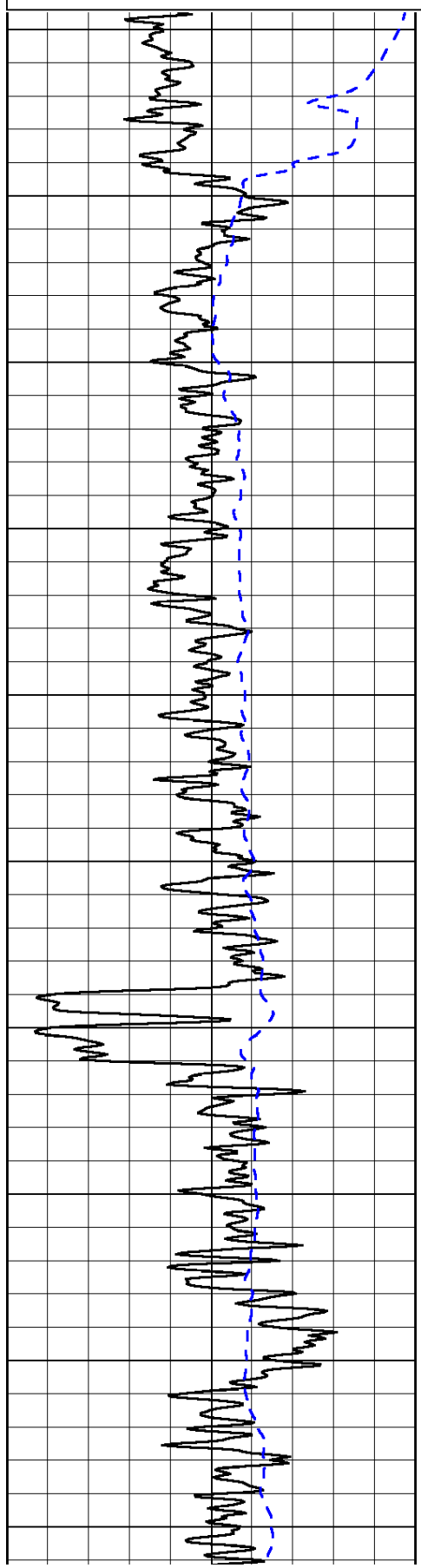
Thank you for using Log-Tech, Inc.  
 (785) 625-3858

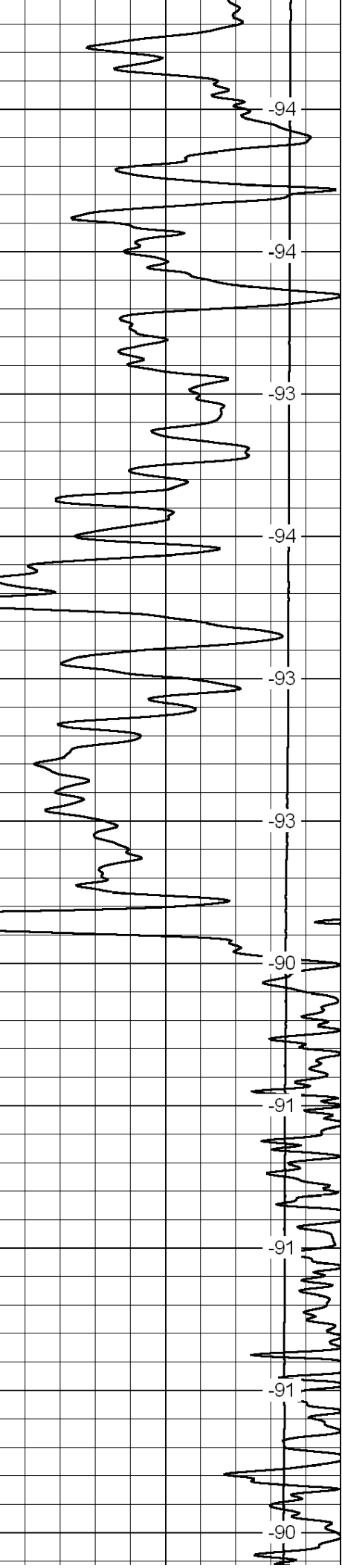
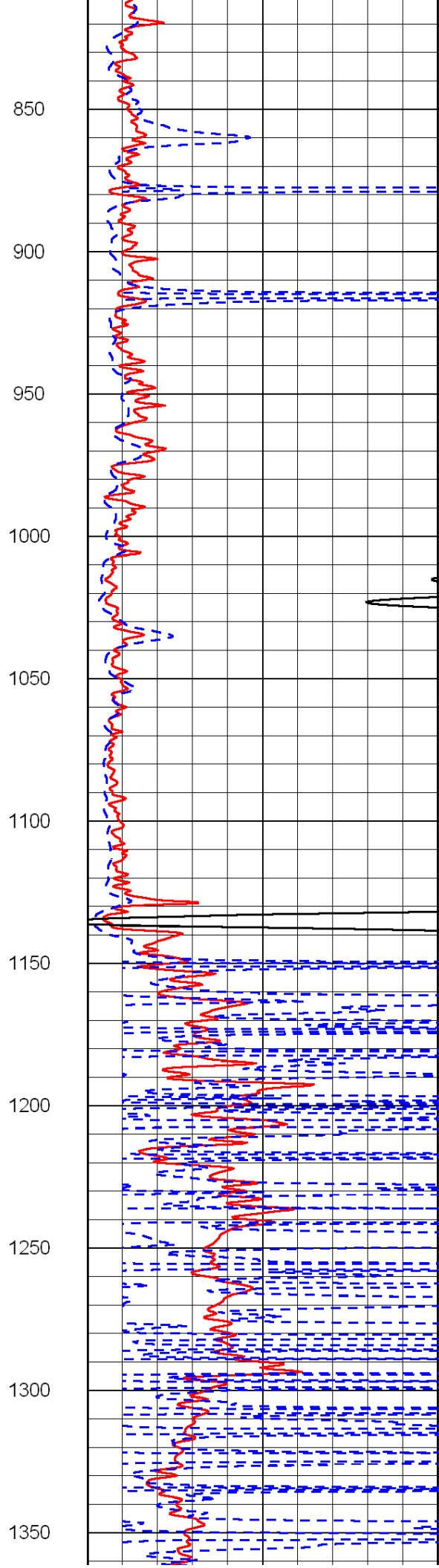
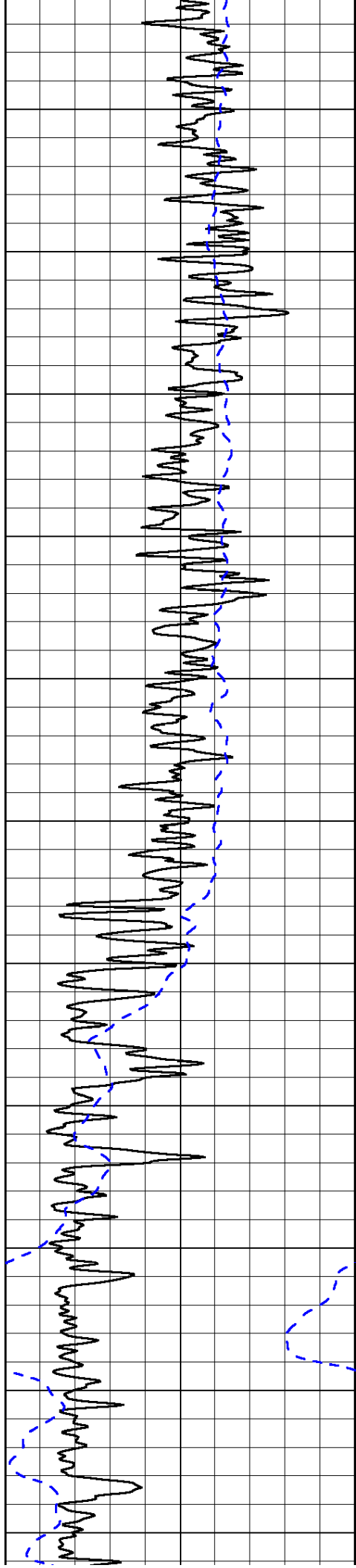
Great Bend, S to K-19, 6 E, 3/4 N, 1/4 E, N into

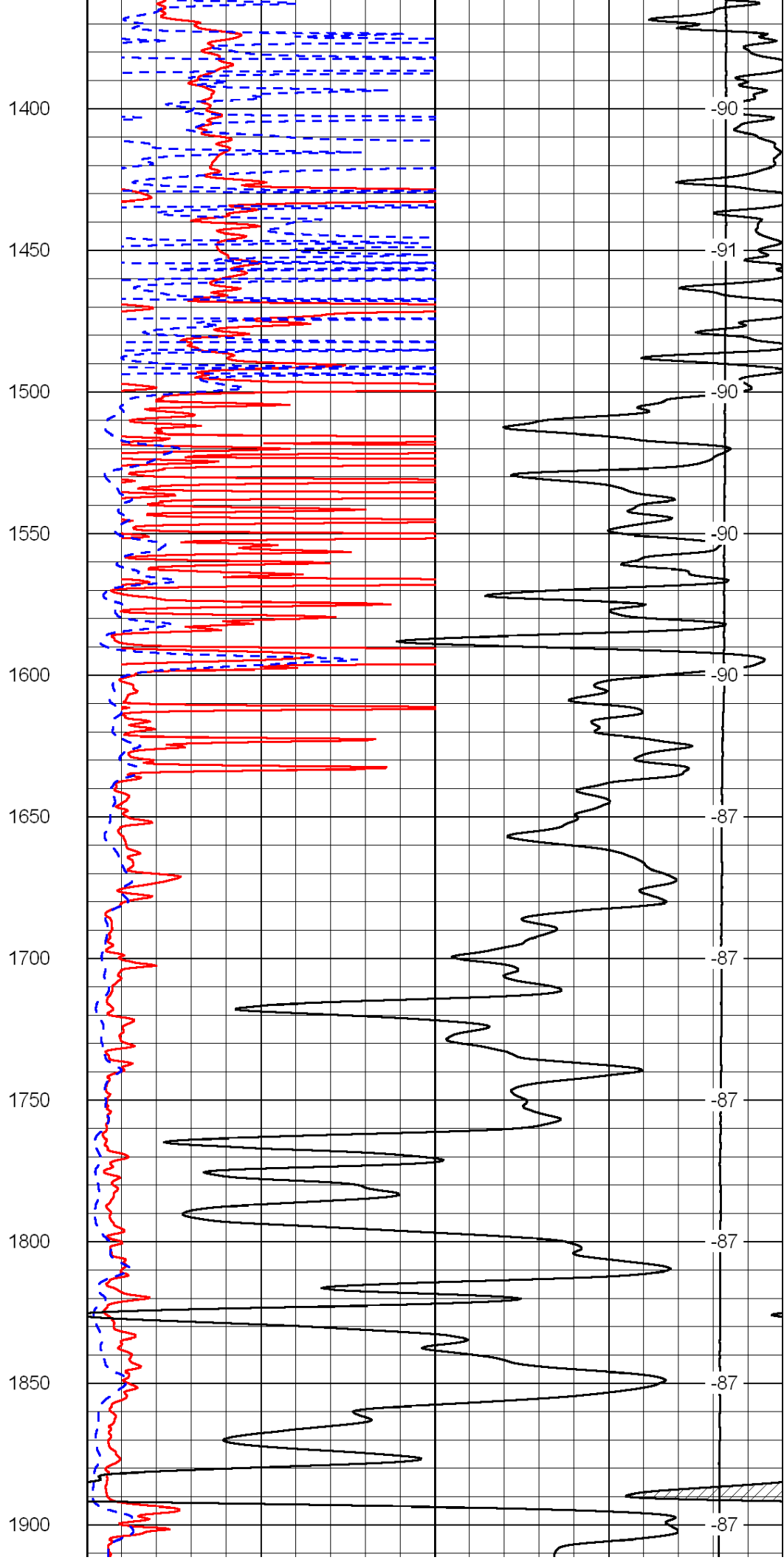
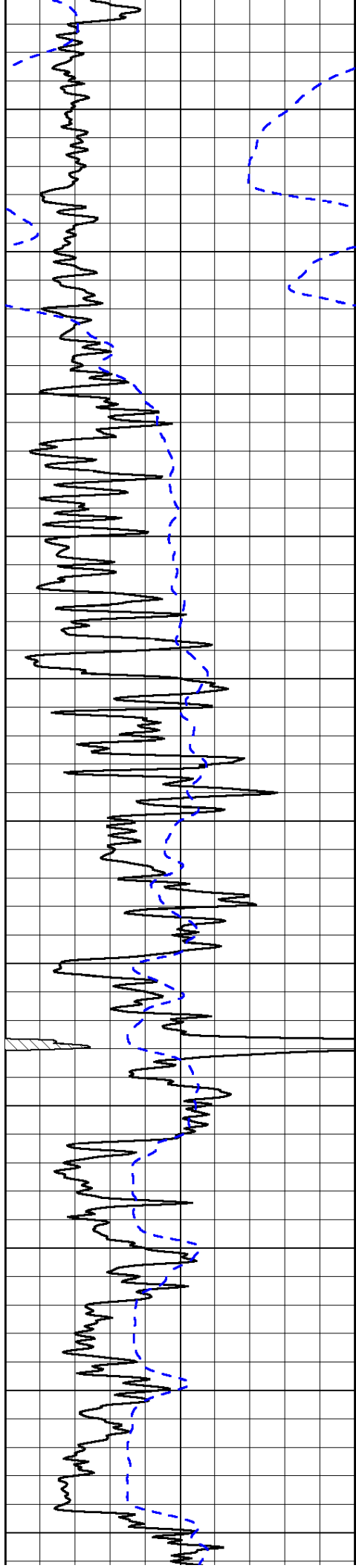
0	Gamma Ray	150
-200	SP (mV)	0

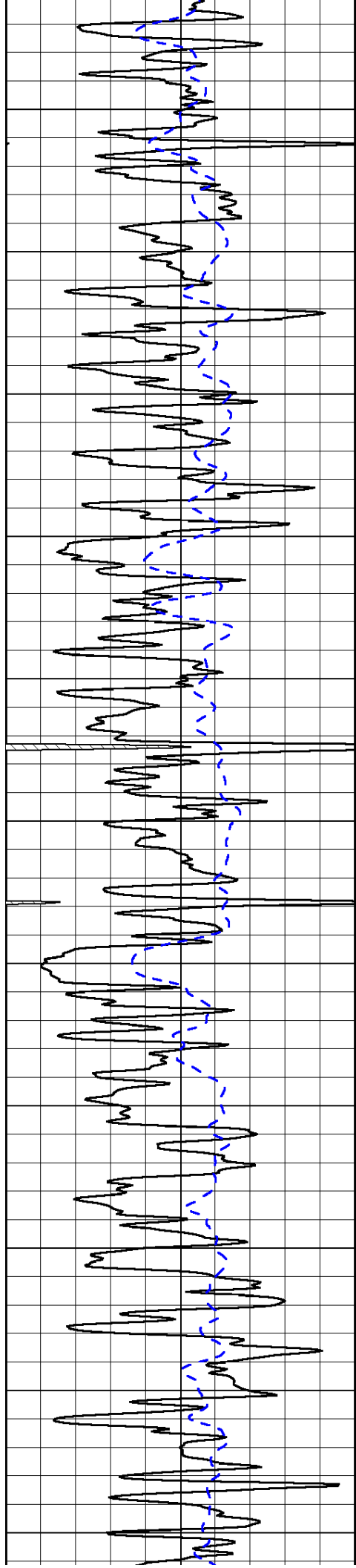
0	Shallow Resistivity	50
0	Deep Resistivity	50
1000	Conductivity	0
15000	Line Tension	0
50	Shallow Resistivity	500
50	Deep Resistivity	500

LSPD

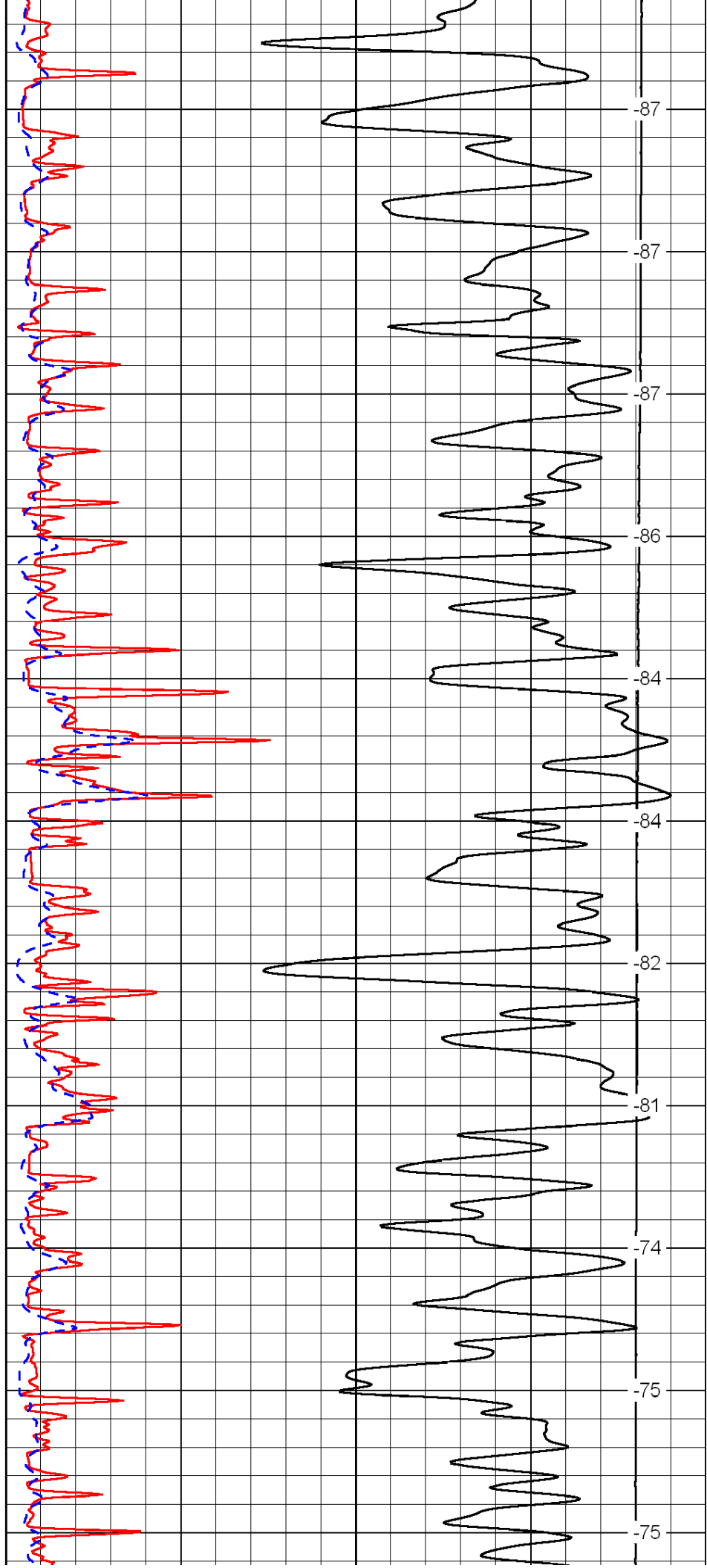




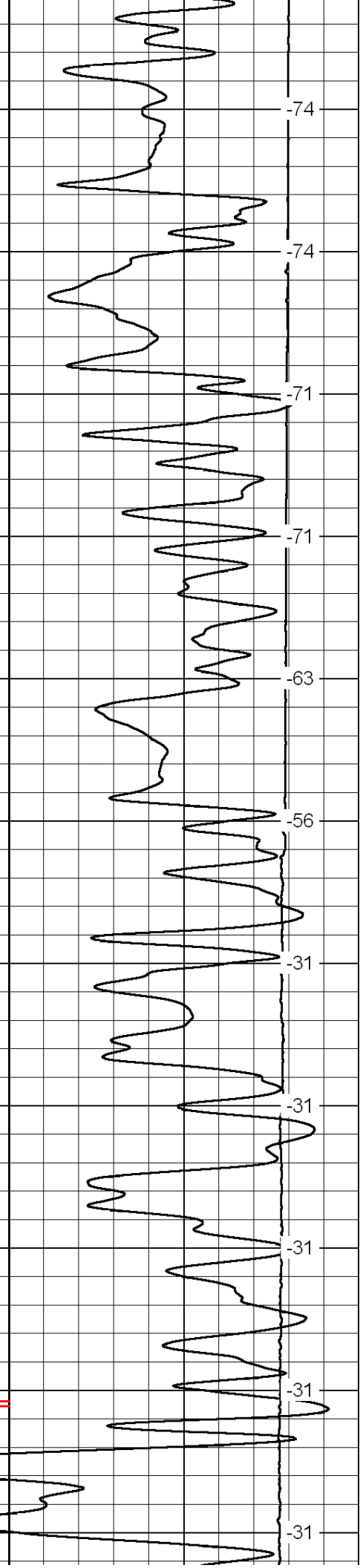
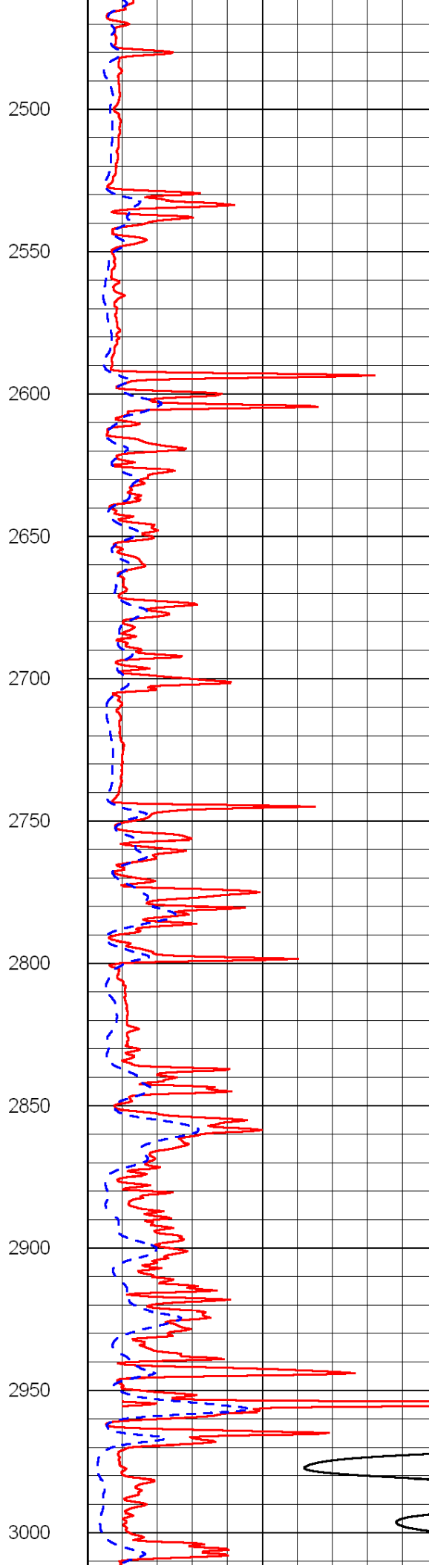
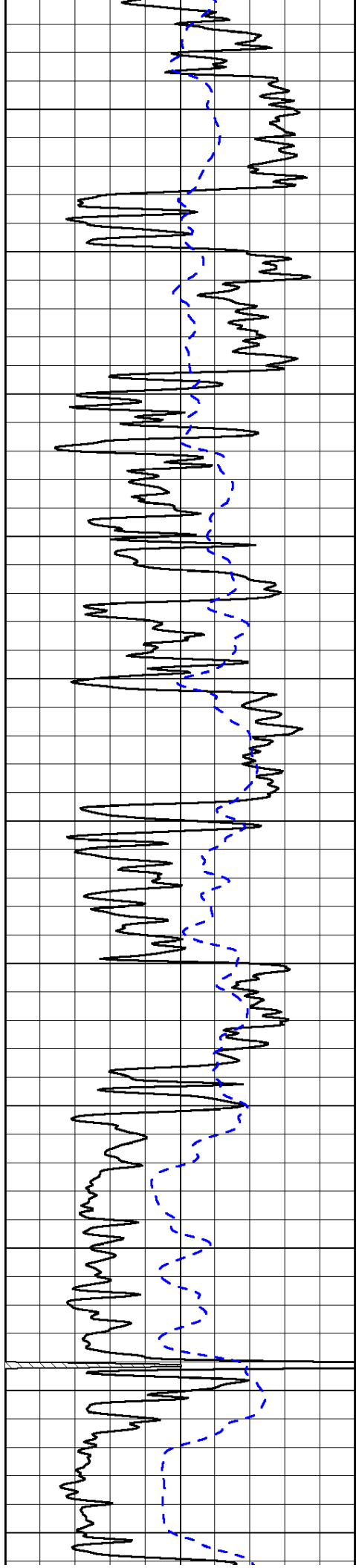


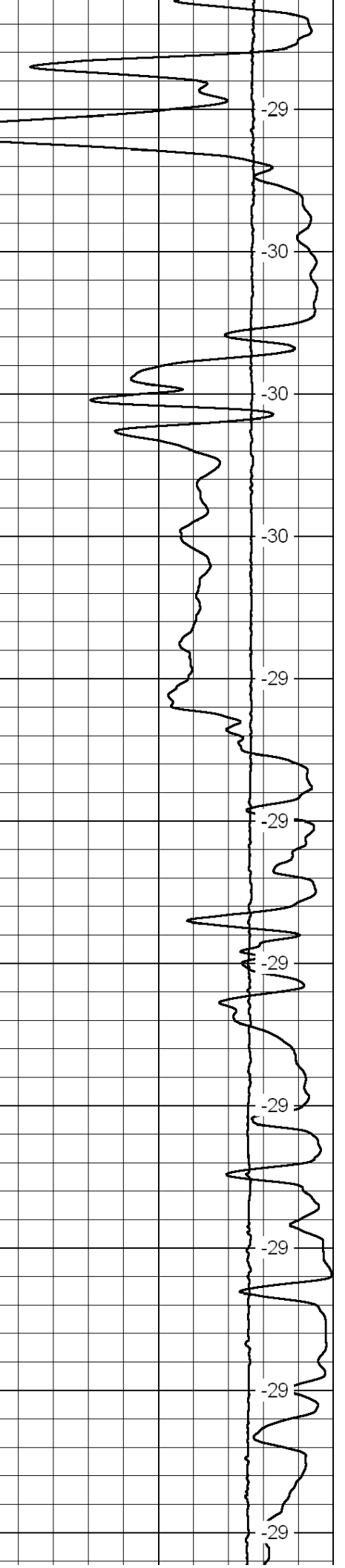
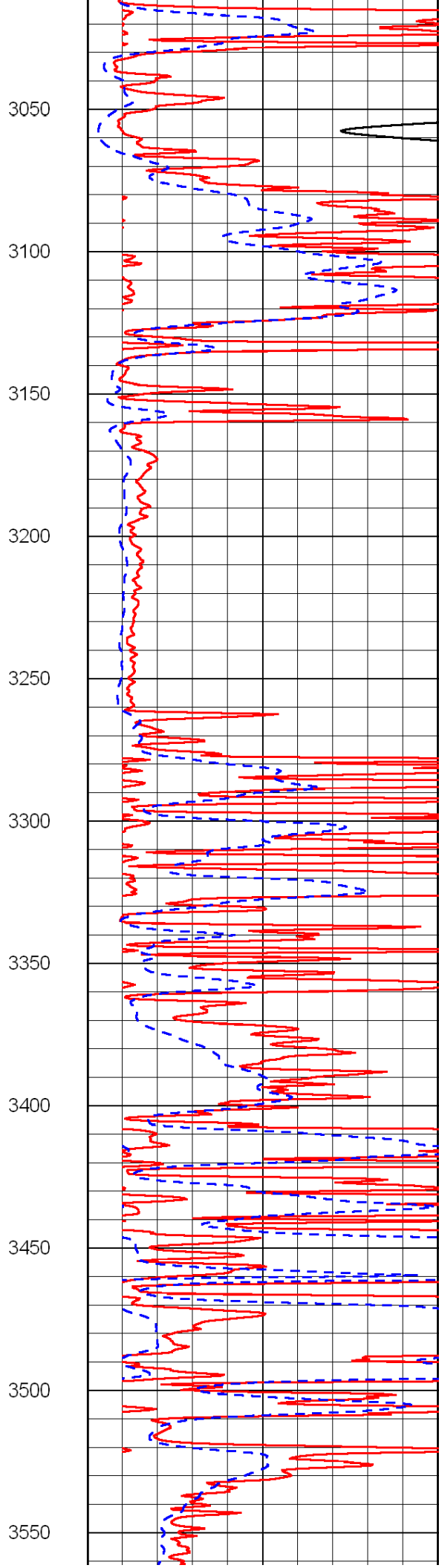
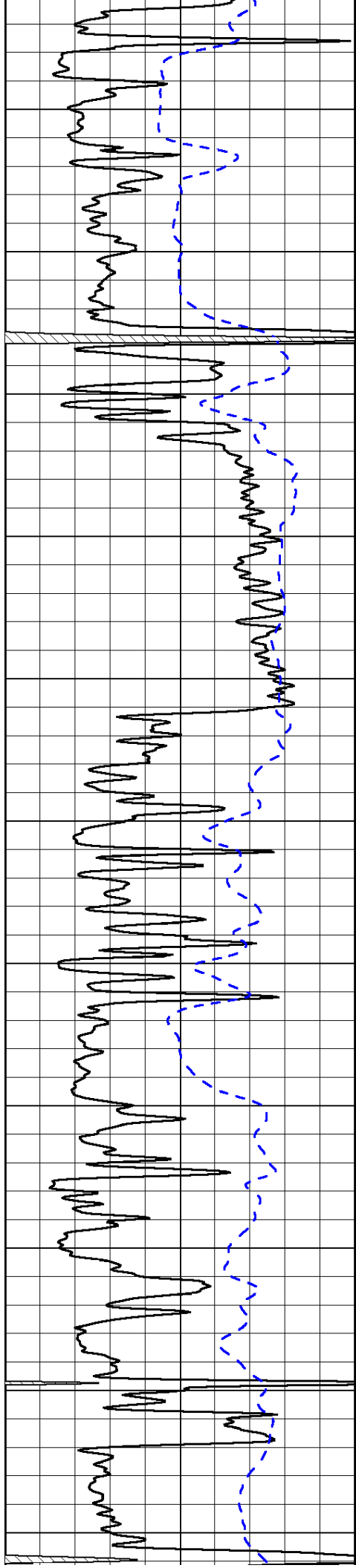


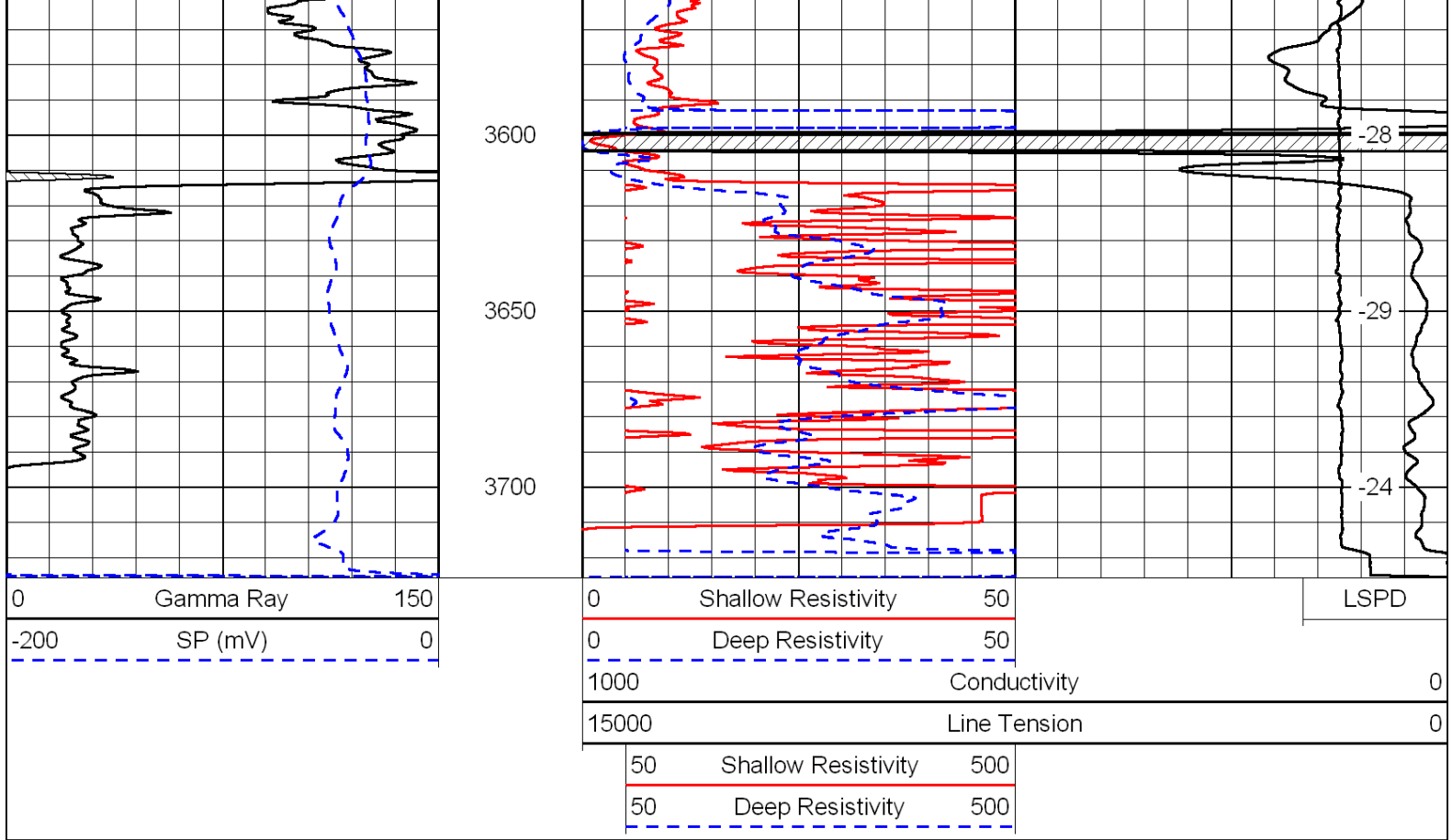
1950  
2000  
2050  
2100  
2150  
2200  
2250  
2300  
2350  
2400  
2450



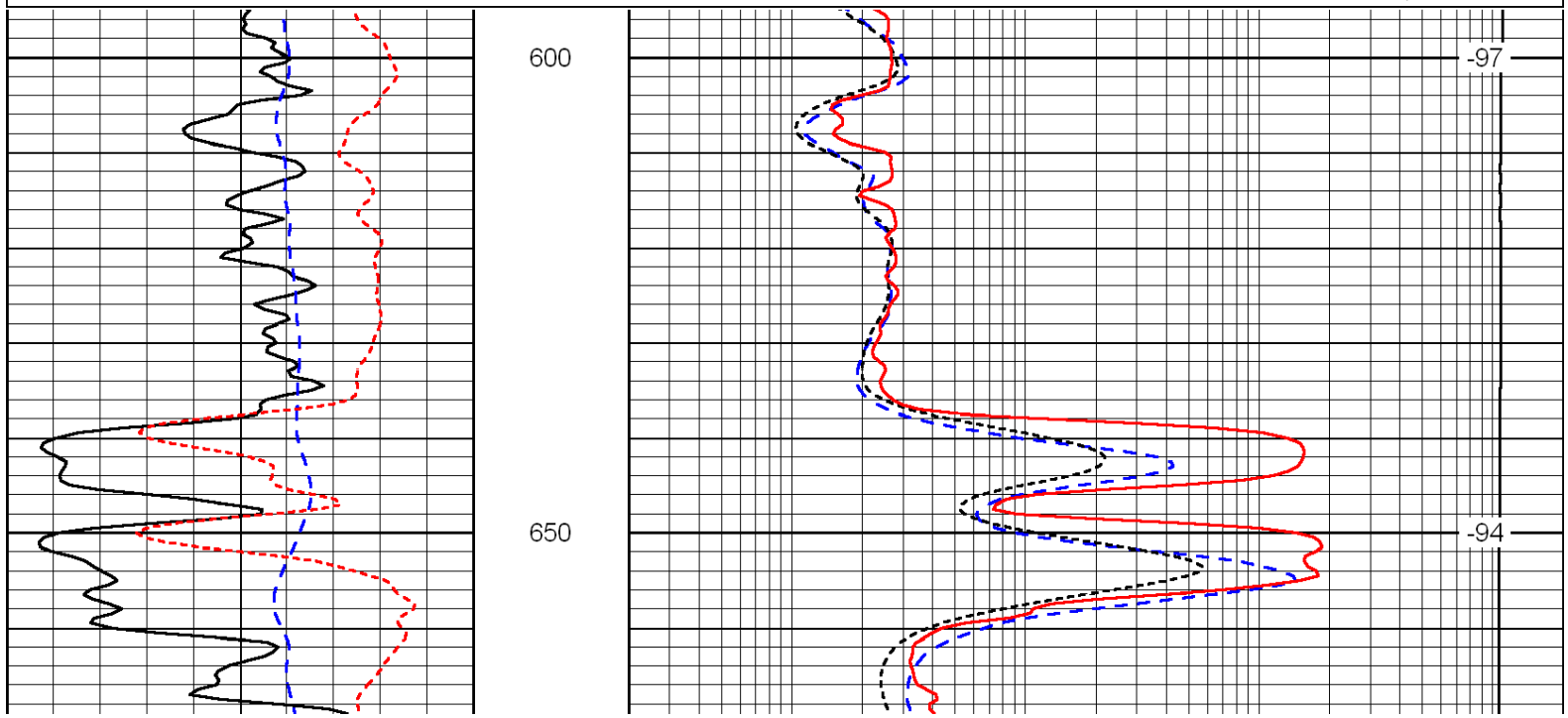
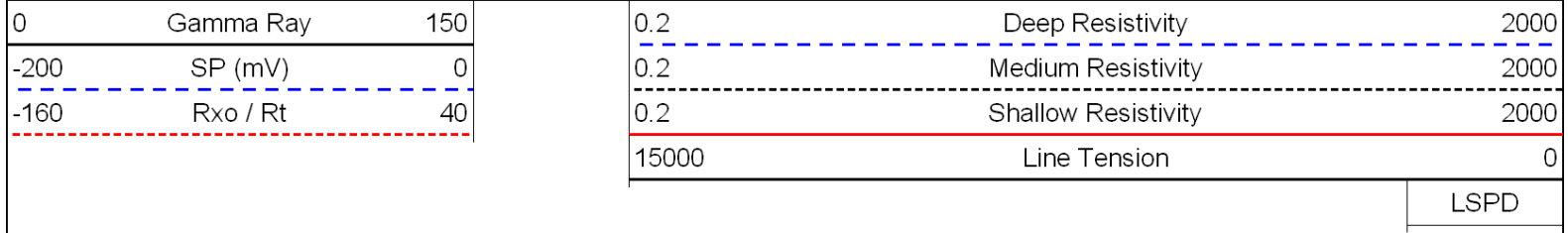
-87  
-87  
-87  
-86  
-84  
-84  
-82  
-81  
-74  
-75  
-75



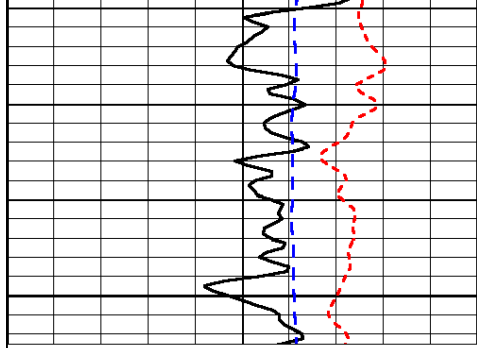




Database File: c:\warrior\data\ld drilling\_siefkes b no. 15-3\ld110810hd.db  
 Dataset Pathname: dil\ld2in  
 Presentation Format: dil  
 Dataset Creation: Tue Nov 16 14:15:19 2010  
 Charted by: Depth in Feet scaled 1:240

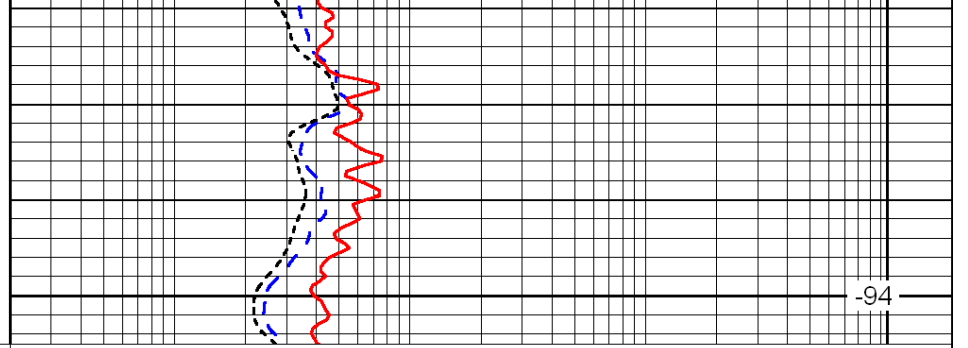






0	Gamma Ray	150
-200	SP (mV)	0
-160	Rxo / Rt	40

700



0.2	Deep Resistivity	2000
0.2	Medium Resistivity	2000
0.2	Shallow Resistivity	2000
15000	Line Tension	0

-94

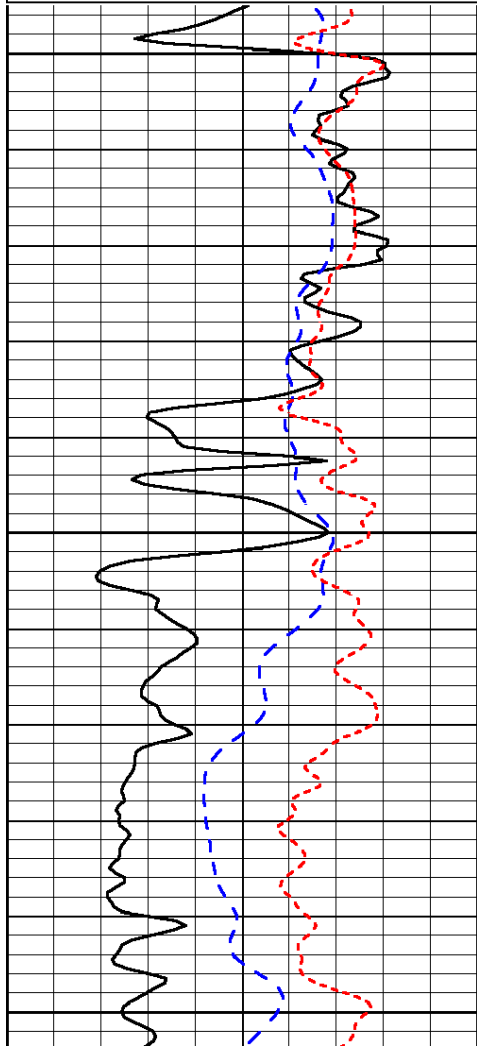
LSPD

Database File: c:\warrior\data\ld drilling\_siefkes b no. 15-3\ld110810hd.db  
 Dataset Pathname: dil\ld2in  
 Presentation Format: dil  
 Dataset Creation: Tue Nov 16 14:15:19 2010  
 Charted by: Depth in Feet scaled 1:240

0	Gamma Ray	150
-200	SP (mV)	0
-160	Rxo / Rt	40

0.2	Deep Resistivity	2000
0.2	Medium Resistivity	2000
0.2	Shallow Resistivity	2000
15000	Line Tension	0

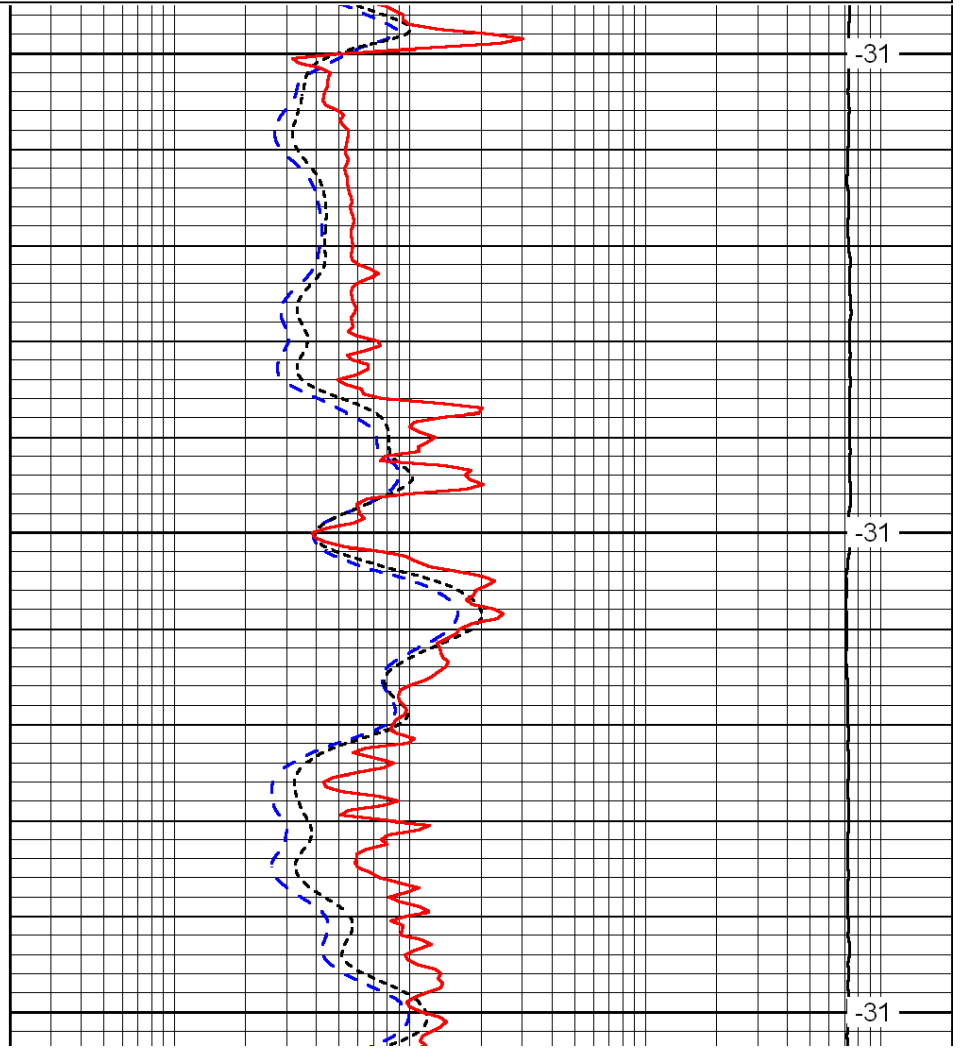
LSPD



2800

2850

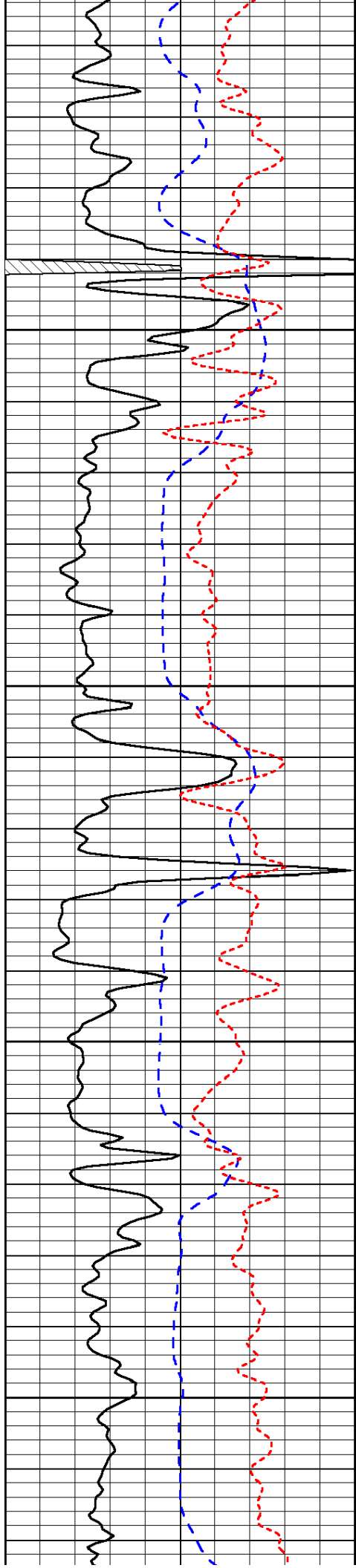
2900



-31

-31

-31

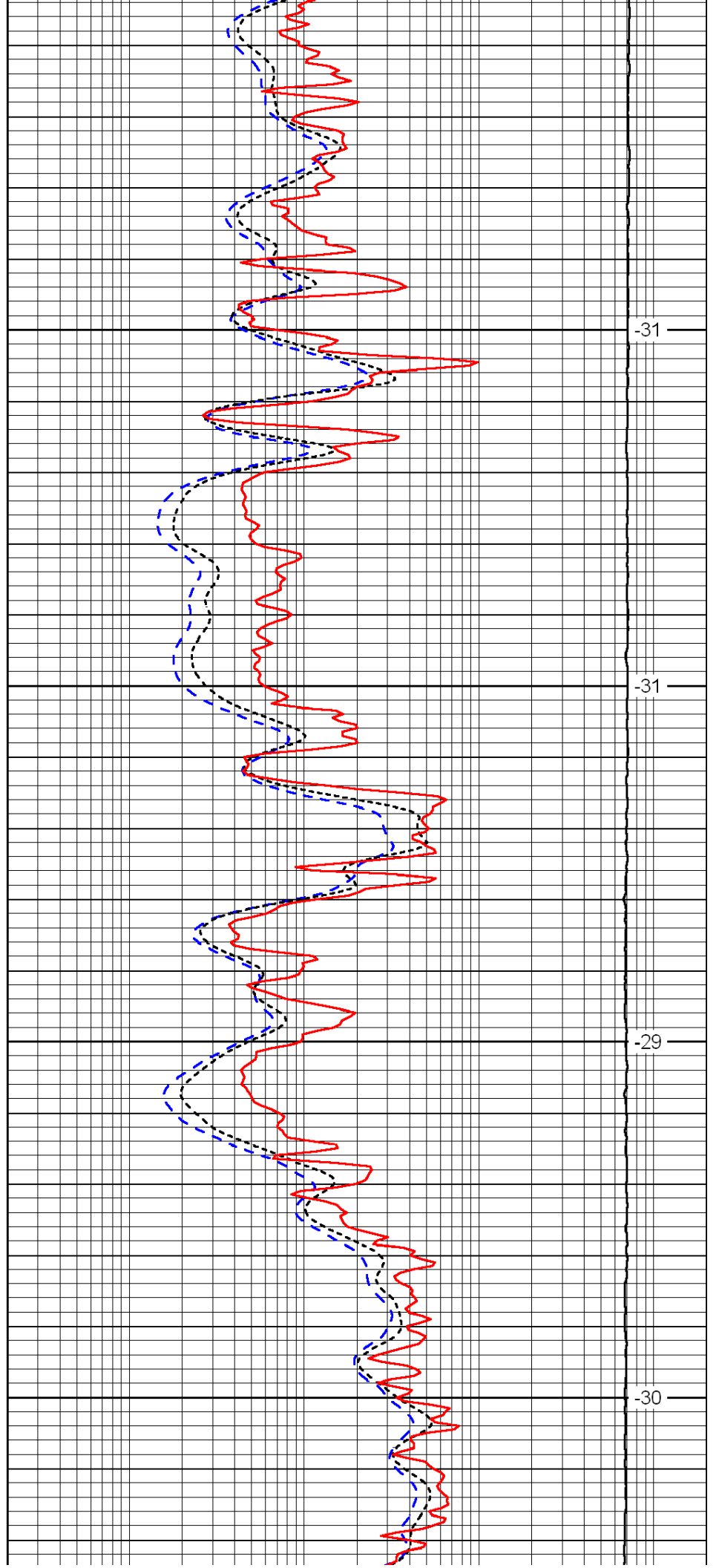


2950

3000

3050

3100

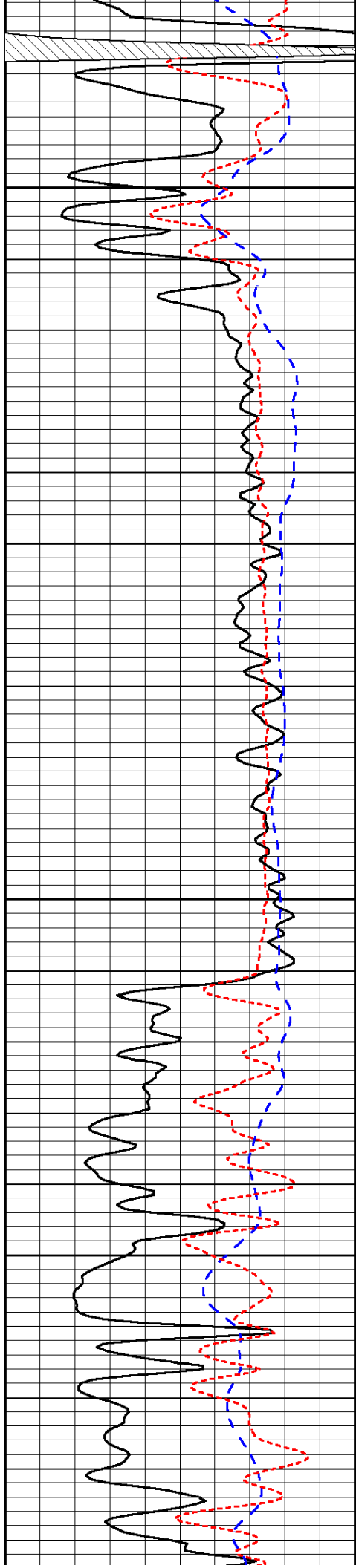


-31

-31

-29

-30

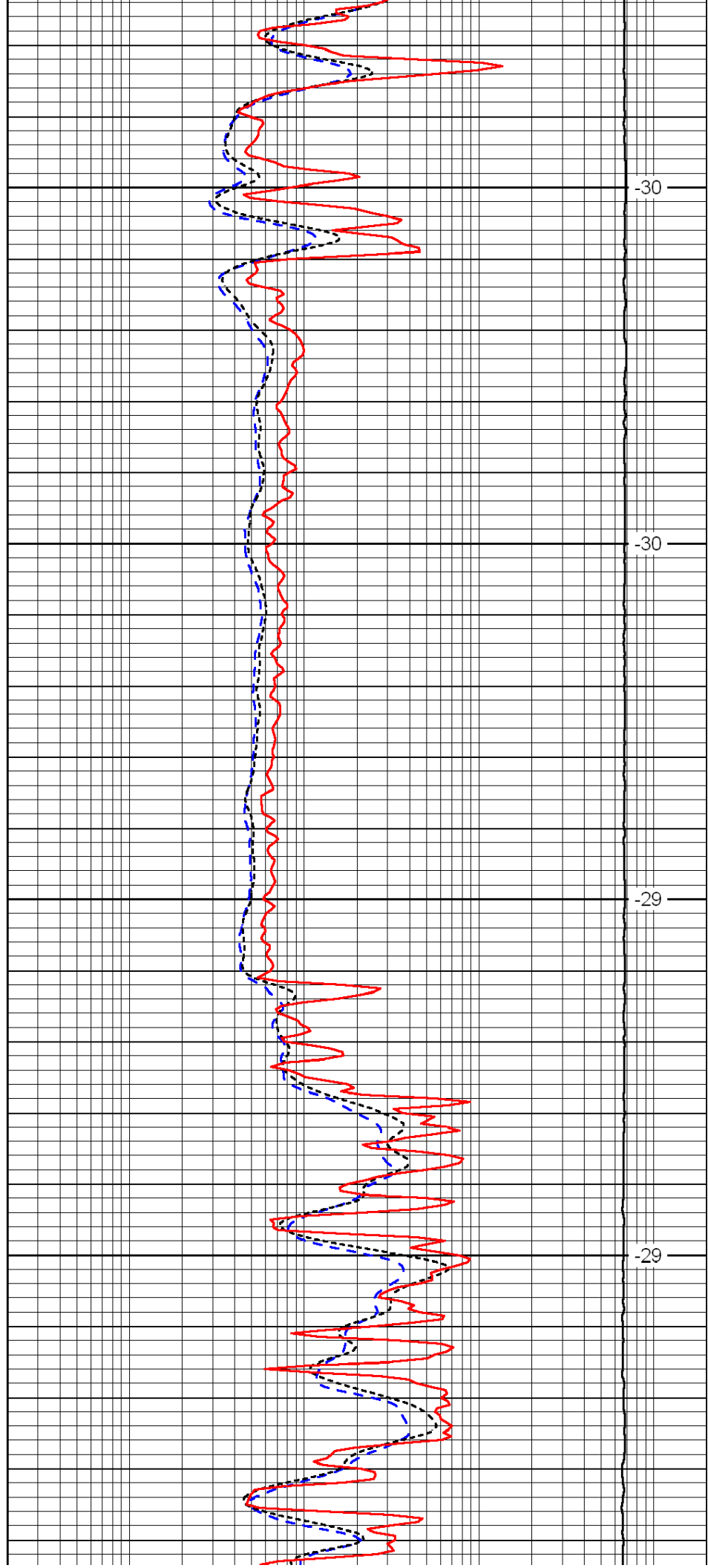


3150

3200

3250

3300

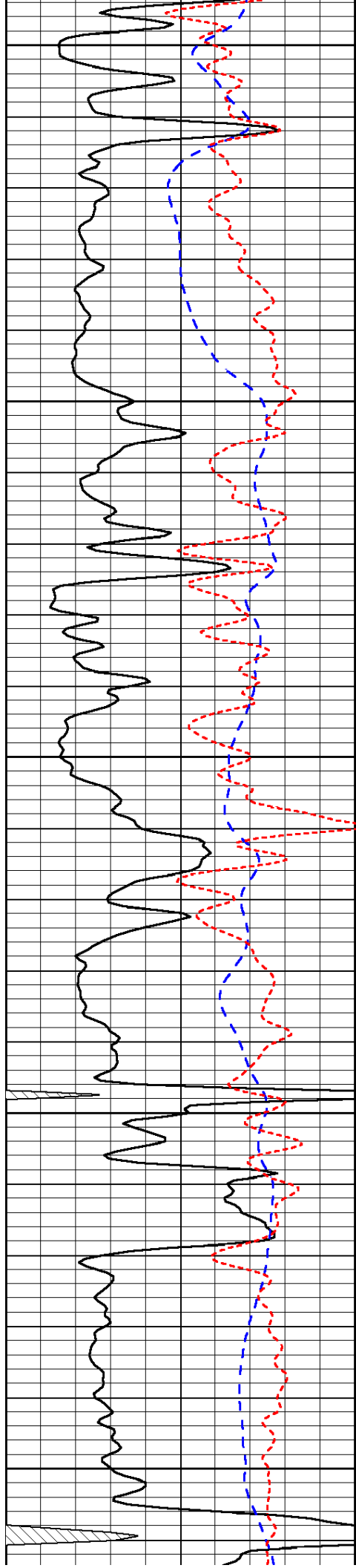


-30

-30

-29

-29



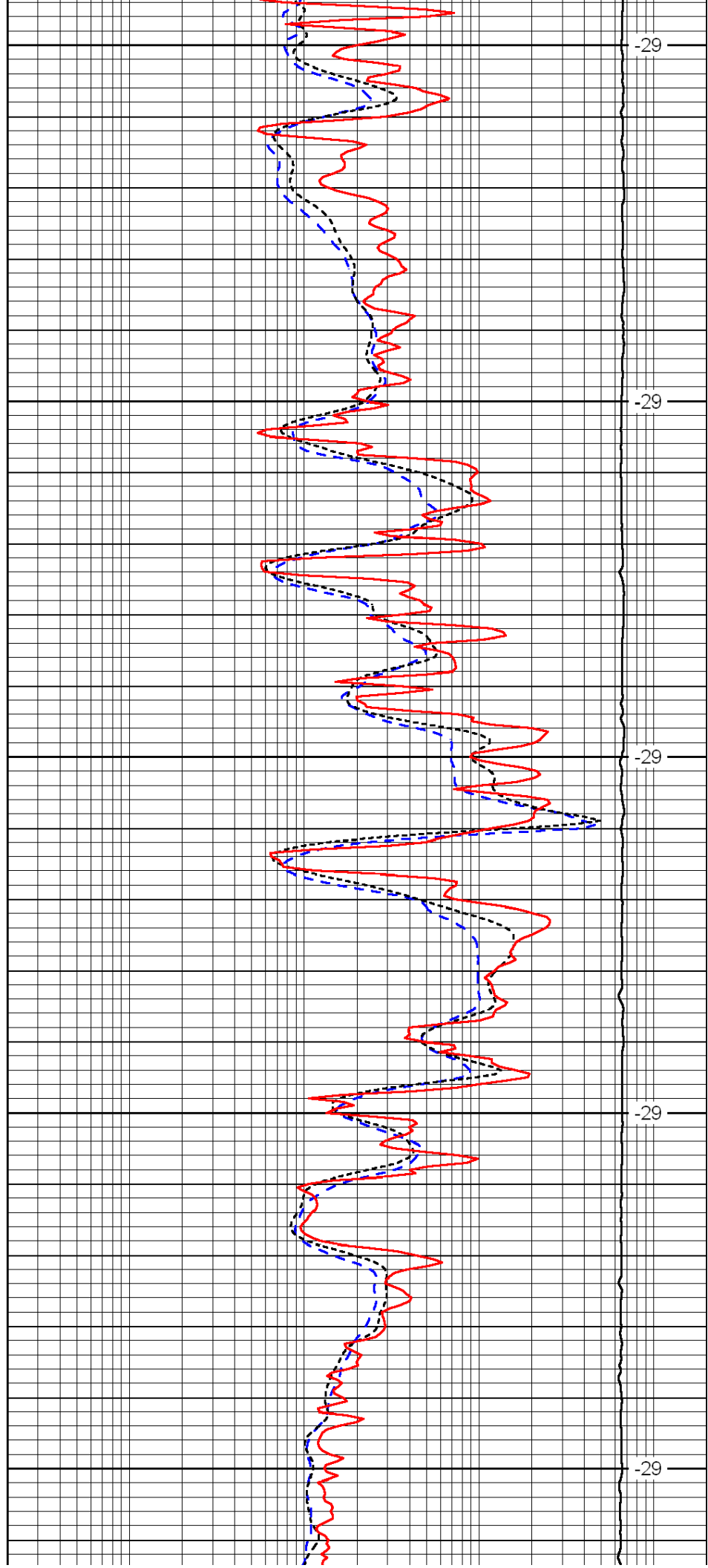
3350

3400

3450

3500

3550



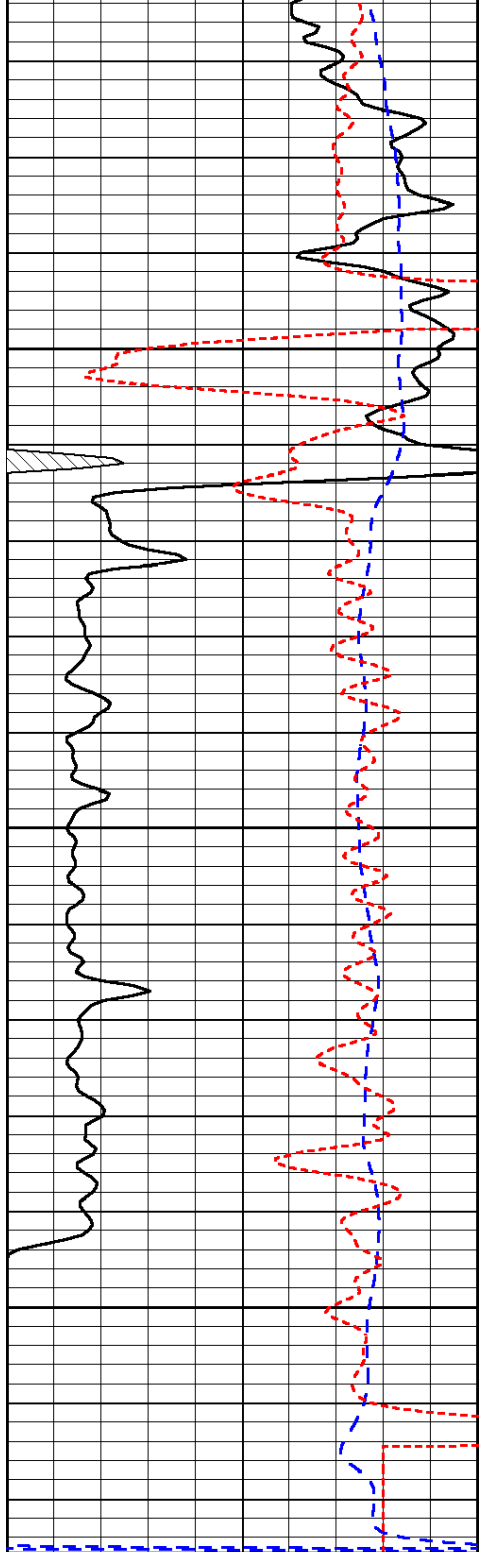
-29

-29

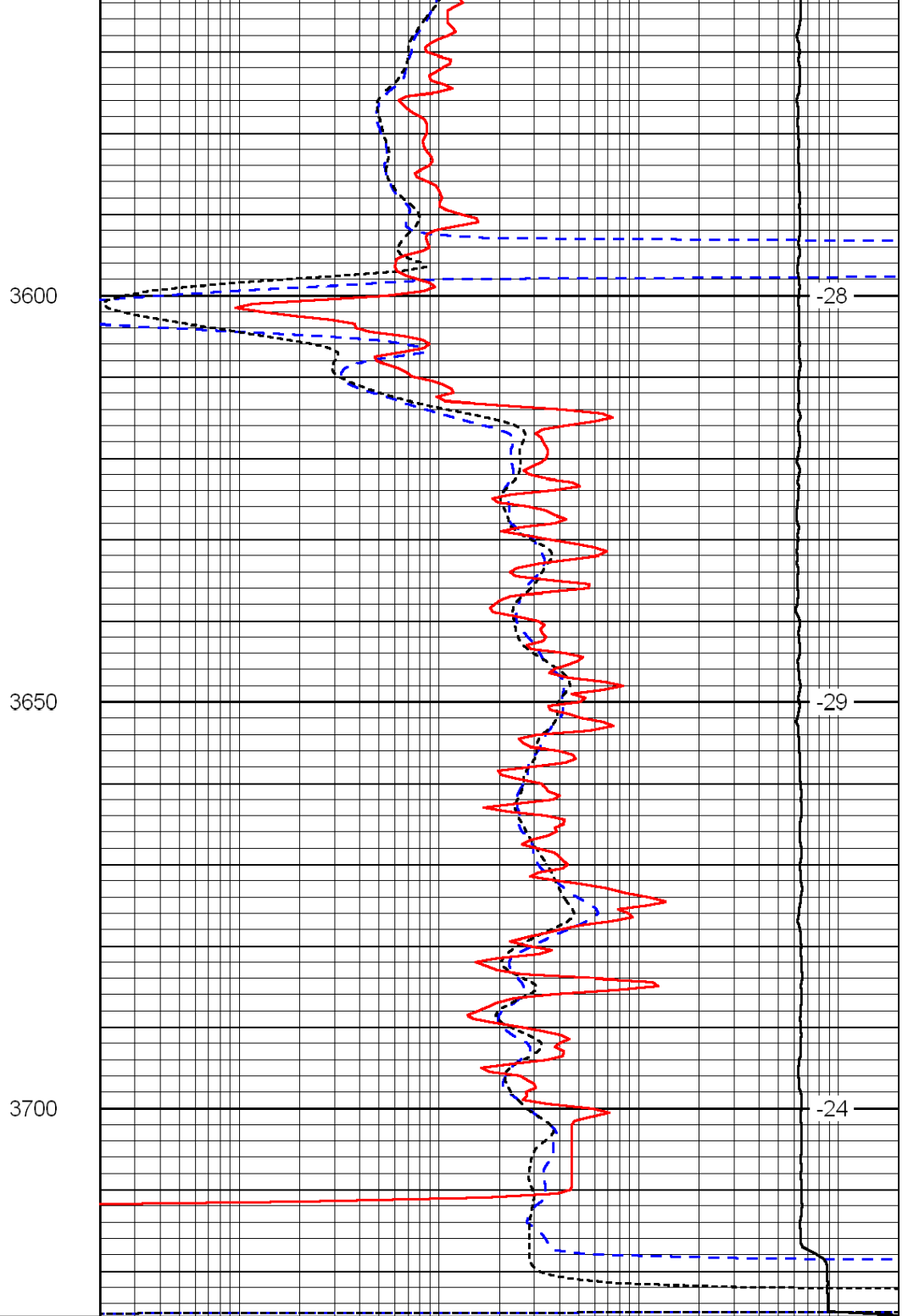
-29

-29

-29



0	Gamma Ray	150
-200	SP (mV)	0
-160	Rxo / Rt	40



0.2	Deep Resistivity	2000
0.2	Medium Resistivity	2000
0.2	Shallow Resistivity	2000
15000	Line Tension	0

LSPD