



Dual Induction Log

DIGITAL LOG

(785) 625-3858

API No.	15-109-20,942-00-00		
Company	Russell Oil, Inc.		
Well	McDaniel N Unit No.1		
Field	McDaniel		
County	Logan	State	Kansas
Location	2090' FSL & 2640' FWL		
Sec: 28	Twp: 15S	Rge: 34W	Other Services CNL/CDL MEL
Permanent Datum	Ground Level	Elevation 3018	Elevation
Log Measured From	Kelly Bushing	11 Ft. Above Perm. Datum	K.B. 3029
Drilling Measured From	Frotkelly Bushing		D.F. 3018
			G.L. 3018

Date	10/16/2010
Run Number	One
Depth Driller	4800
Depth Logger	4803
Bottom Logged Interval	4802
Top Log Interval	200
Casing Driller	8.625 @ 230
Casing Logger	224
Bit Size	7.875
Type Fluid in Hole	Chemical
Salinity, ppm CL	5.500
Density / Viscosity	9.4 54
pH / Fluid Loss	10.0 10.4
Source of Sample	Flowline
Rm @ Meas. Temp	.7 @ 68
Rmf @ Meas. Temp	.53 @ 68
Rmc @ Meas. Temp	.95 @ 68
Source of Rmf / Rmc	Charts
Rm @ BHT	.38 @ 124
Operating Rig Time	4 Hours
Max Rec. Temp. F	124
Equipment Number	15
Location	Hays
Recorded By	C. Desaire
Witnessed By	Kevin Bailey

<<< Fold Here >>>

All interpretations are opinions based on inferences from electrical or other measurements and we cannot and do not guarantee the accuracy or correctness of any interpretation, and we shall not, except in the case of gross or willful negligence on our part, be liable or responsible for any loss, costs, damages, or expenses incurred or sustained by anyone resulting from any interpretation made by any of our officers, agents or employees. These interpretations are also subject to our general terms and conditions set out in our current Price Schedule.

Comments

Thank you for using Log-Tech, Inc.
 (785) 625-3858

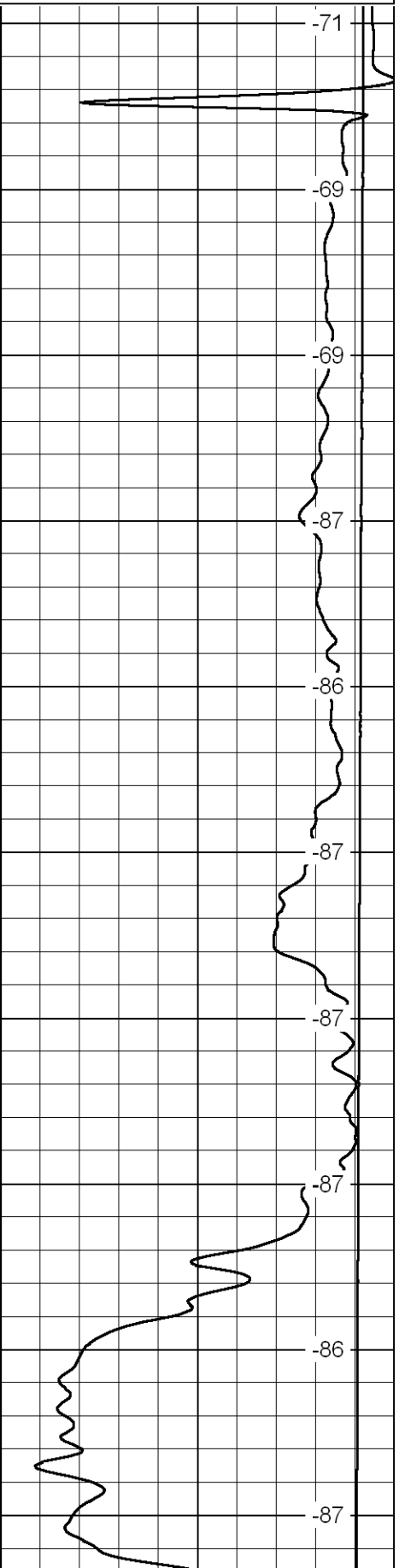
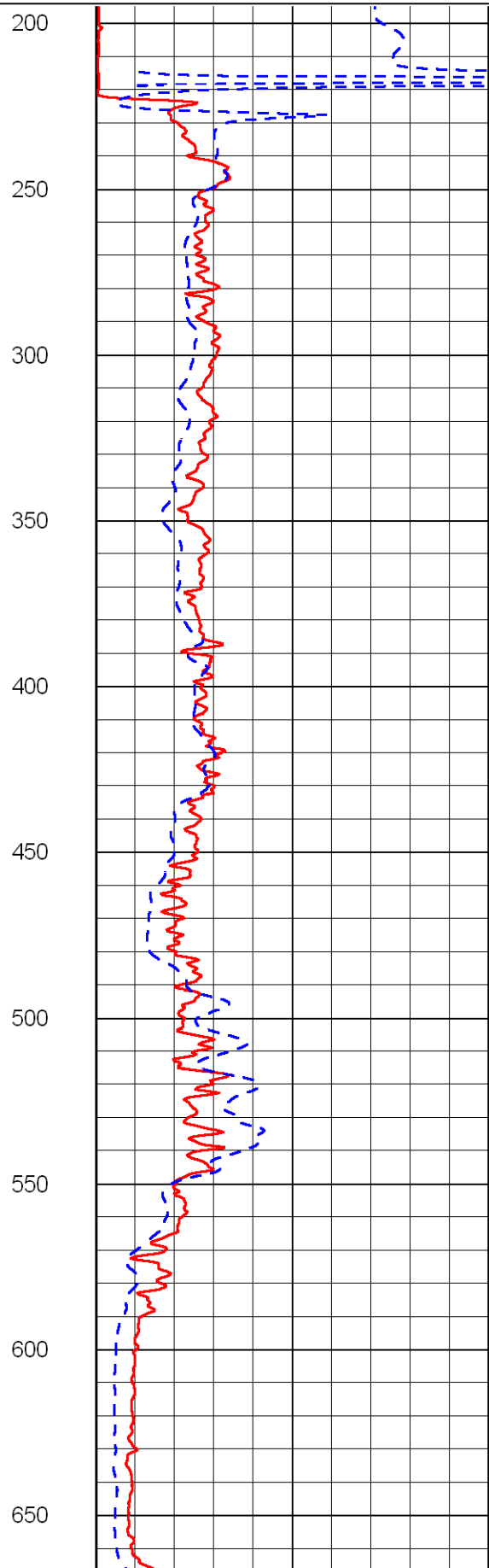
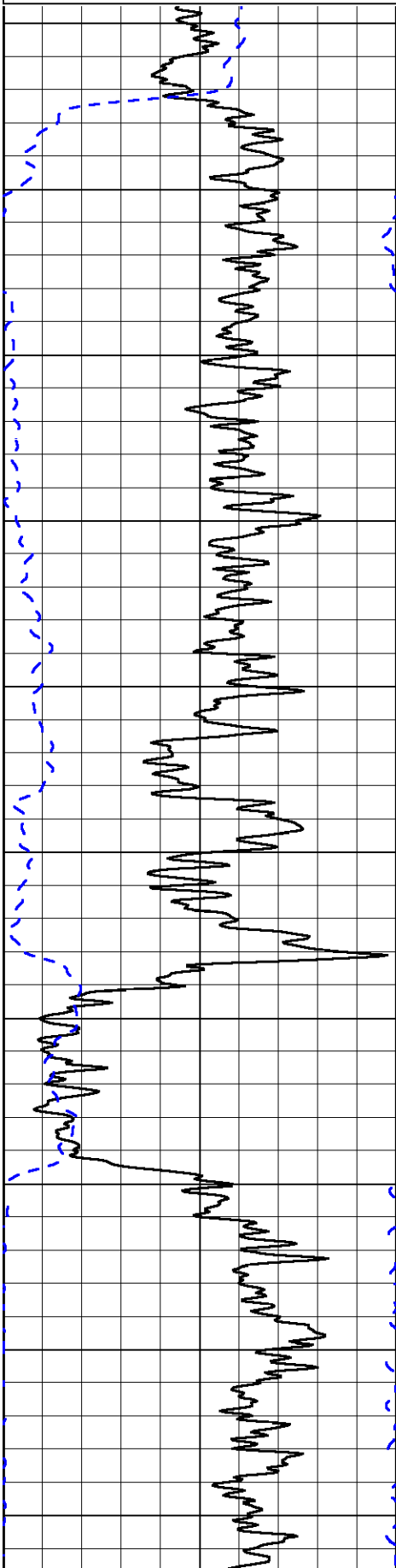
Pence Ks, 3 W, 4 N, 1 1/2 E, N Into

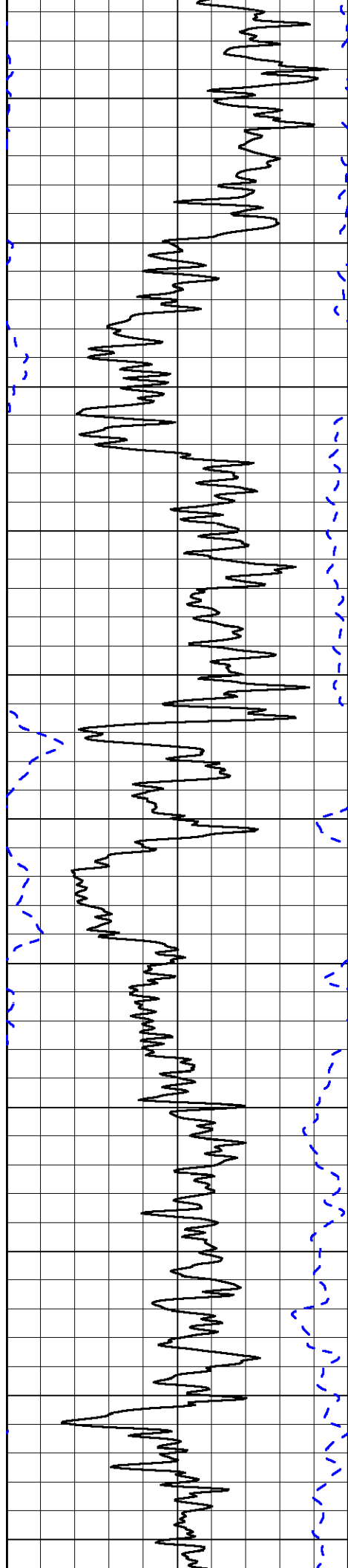
Database File: russhd.db
 Dataset Pathname: dil/russtk
 Presentation Format: dil2in
 Dataset Creation: Sat Oct 16 05:01:29 2010
 Charted by: Depth in Feet scaled 1:600

0	Gamma Ray	150
-200	SP	0

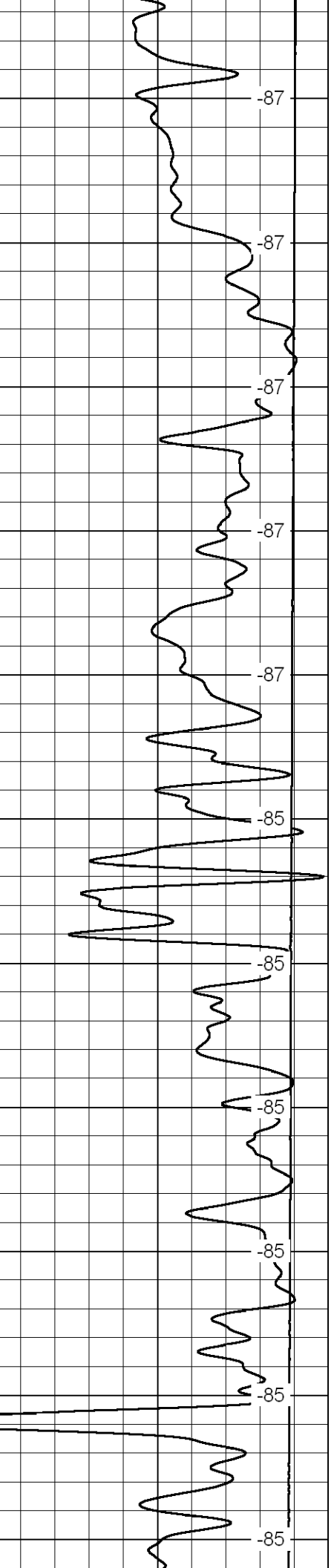
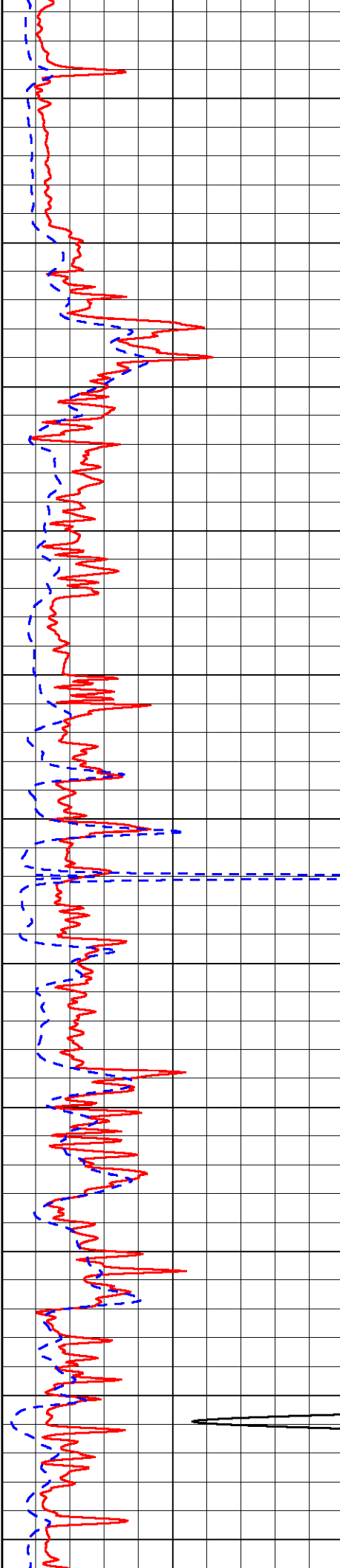
0	Shallow Resistivity	50
0	Deep Resistivity	50
1000	Conductivity	0
15000	Line Tension	0

50	Shallow Resistivity	500
50	Deep Resistivity	500

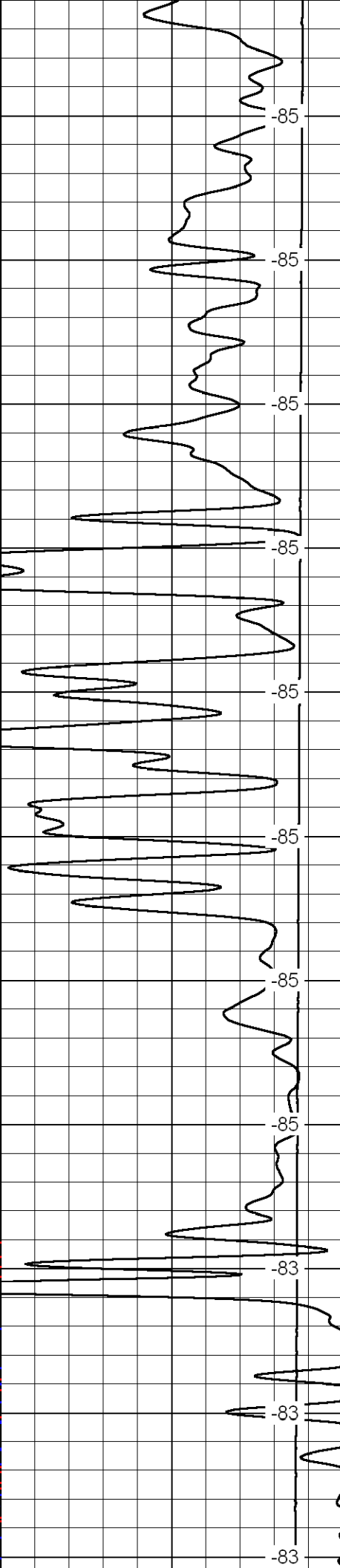
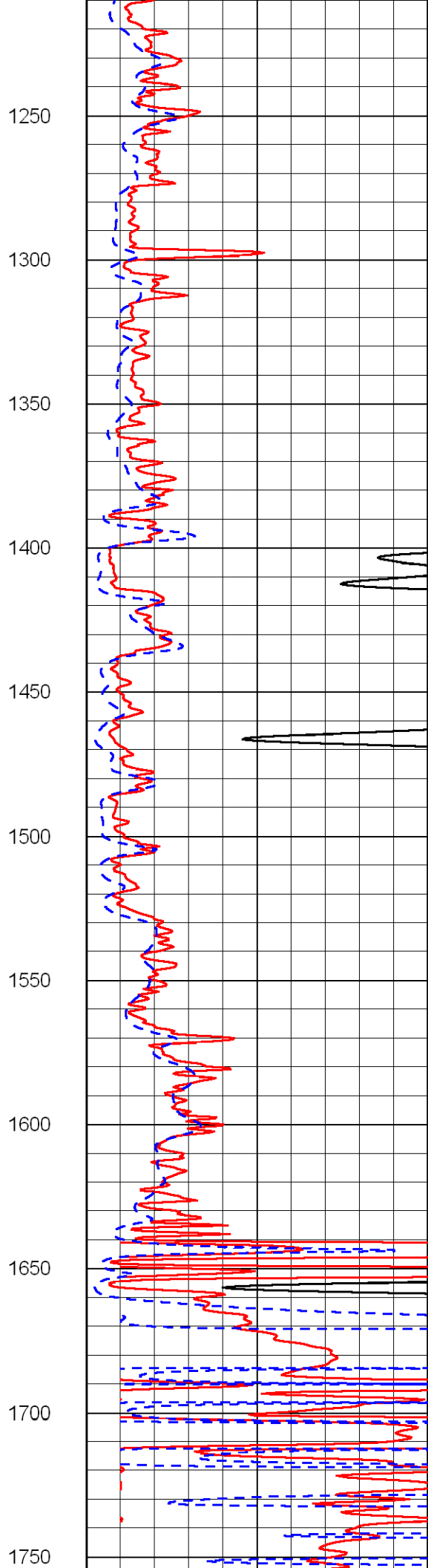
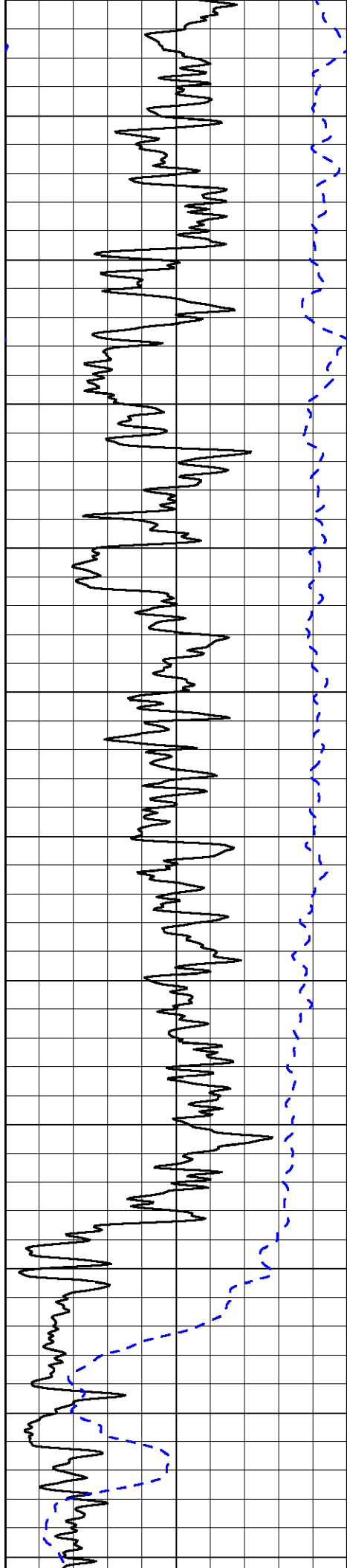


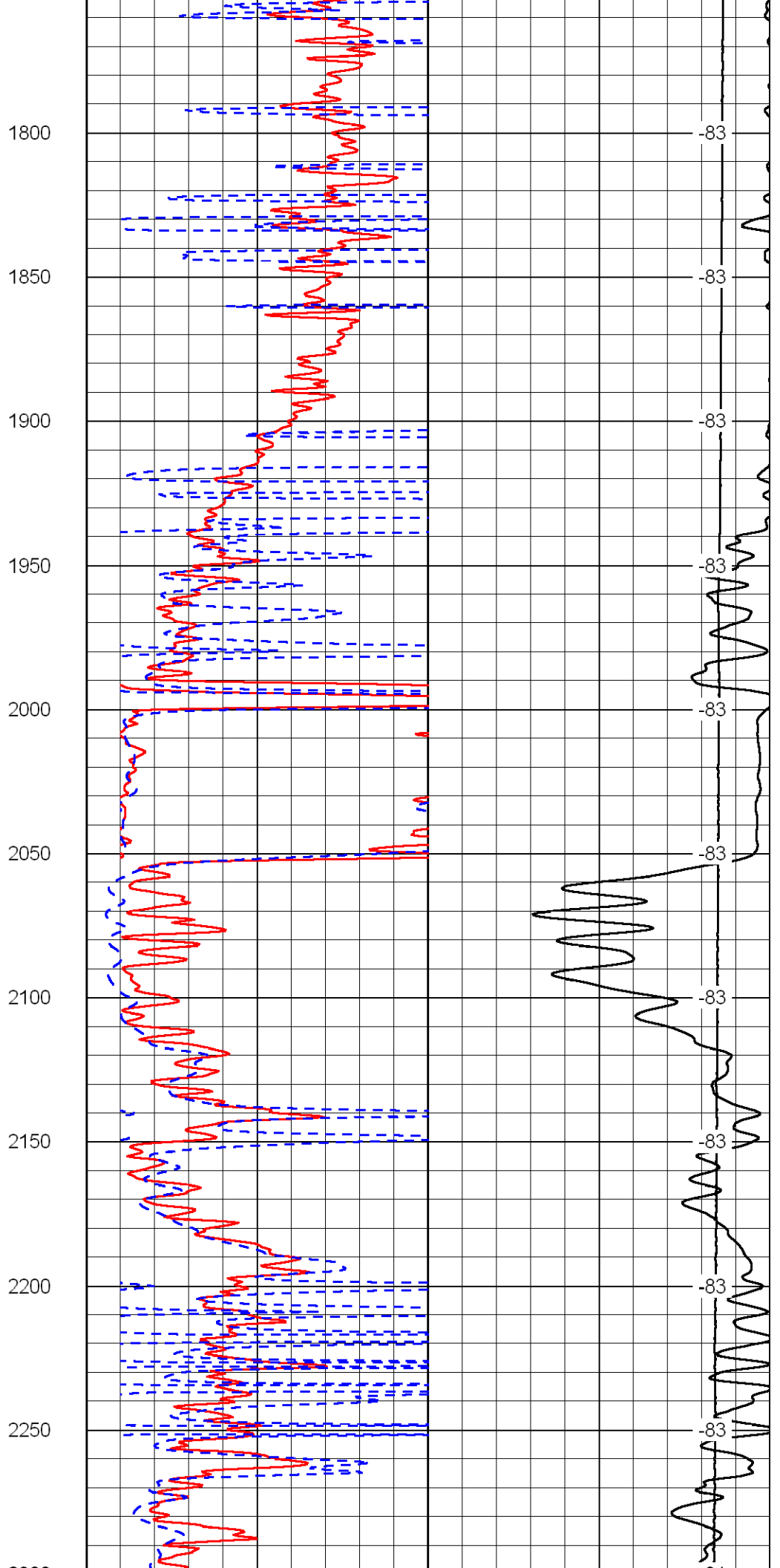
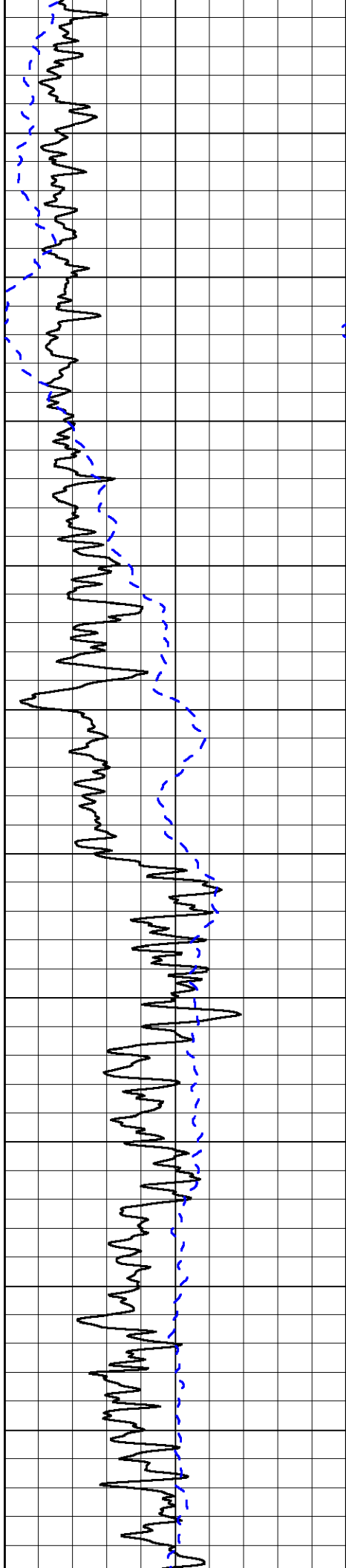


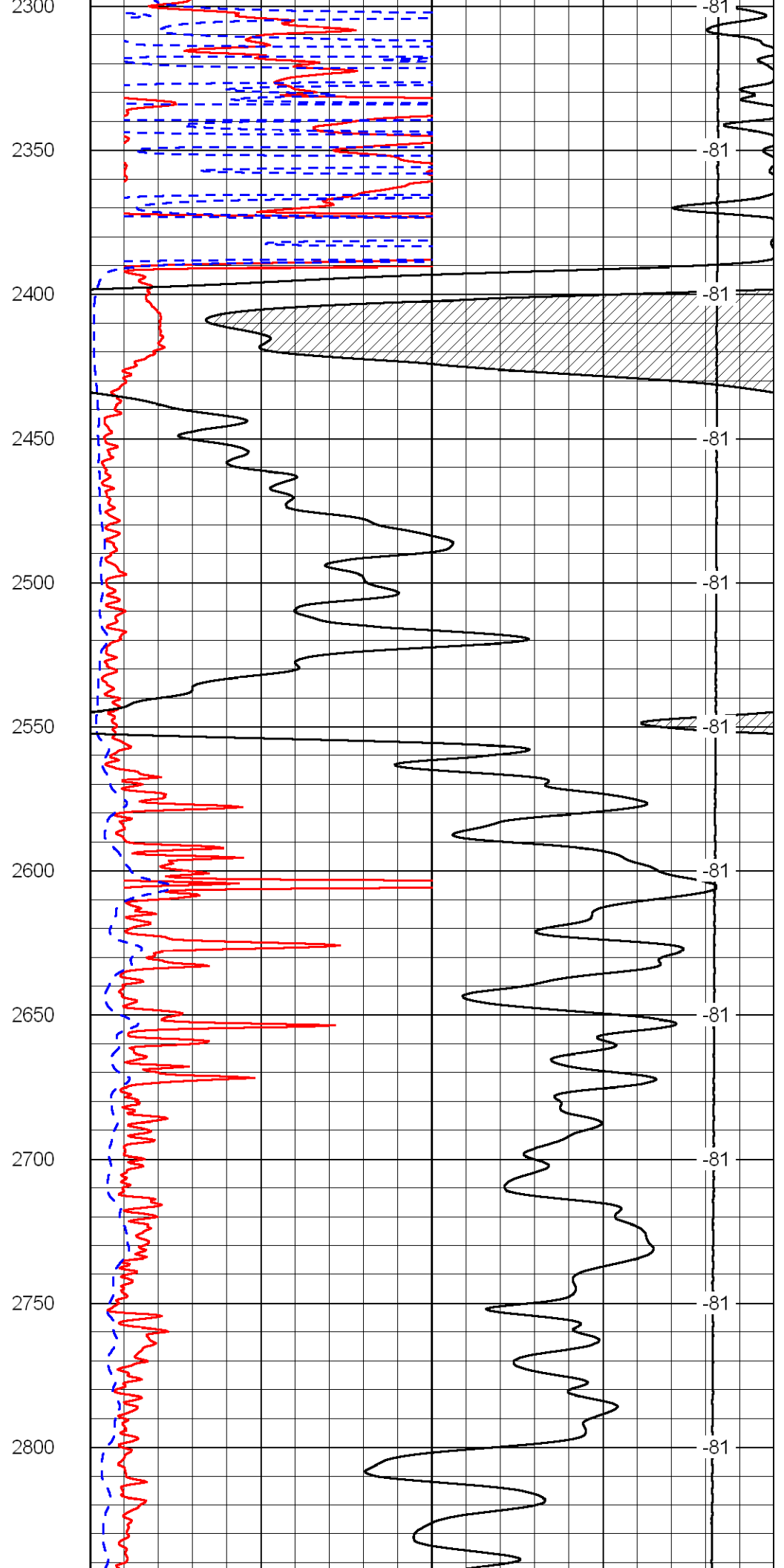
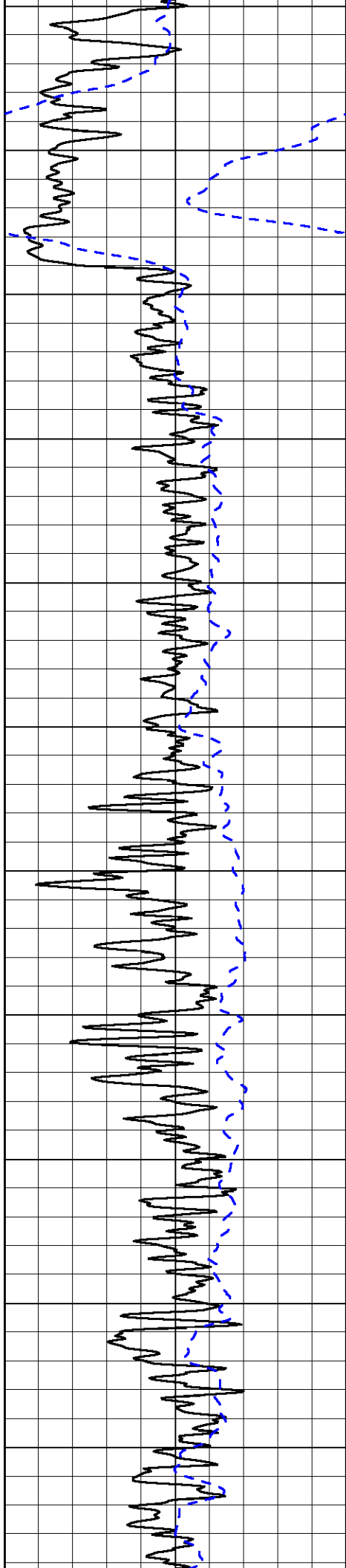
700
750
800
850
900
950
1000
1050
1100
1150
1200

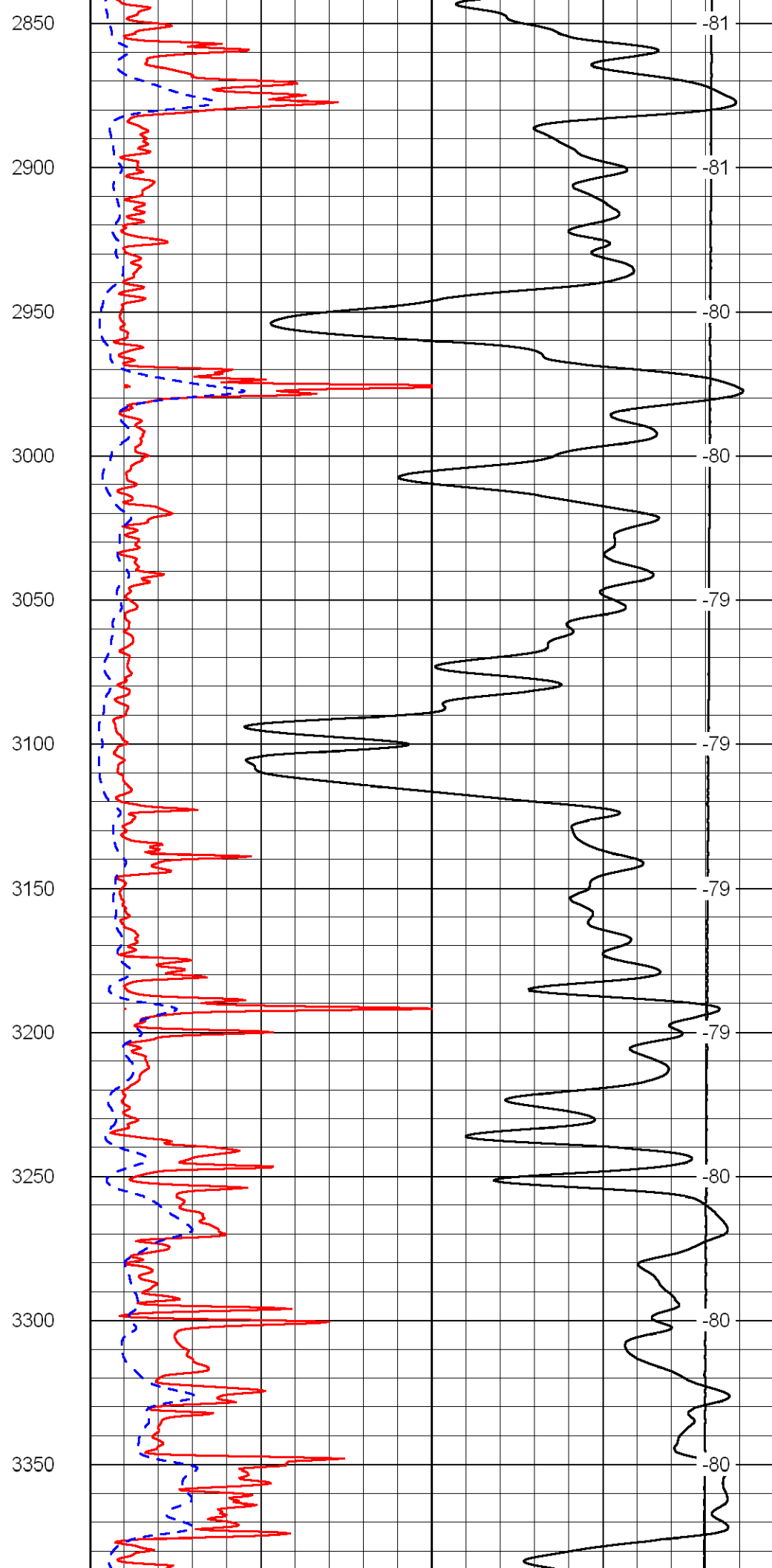
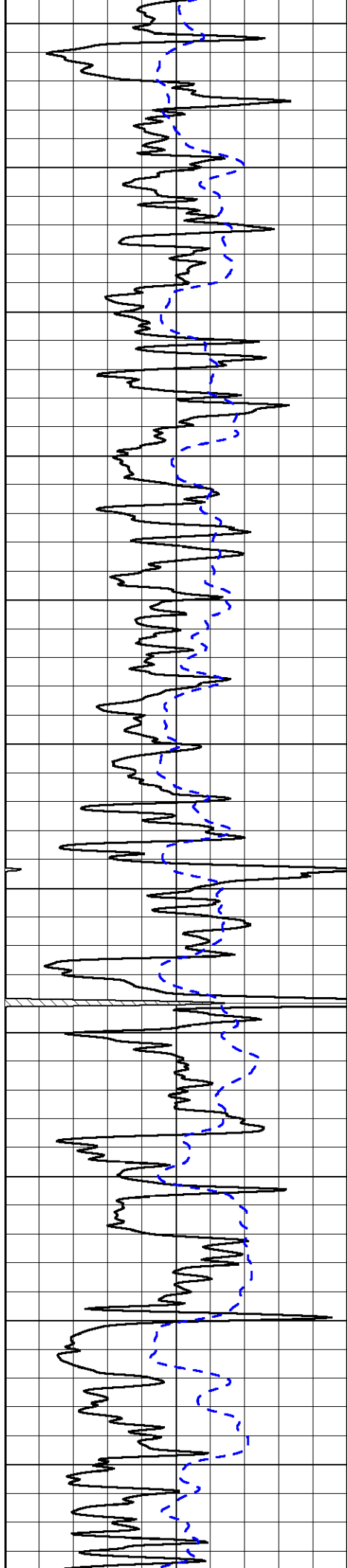


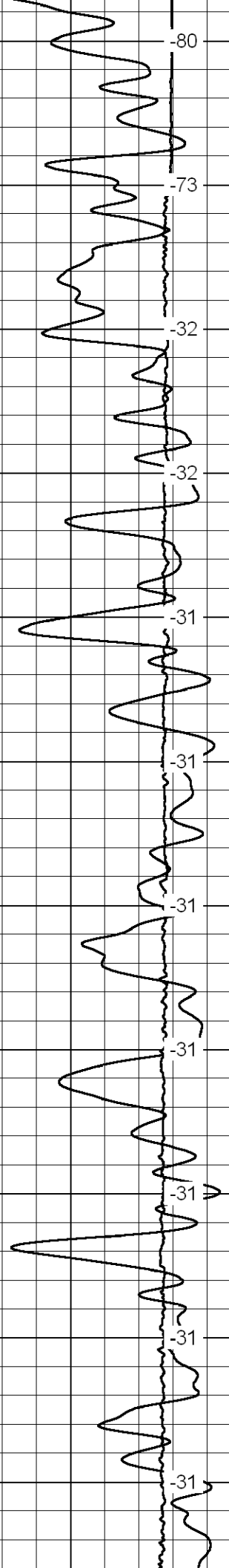
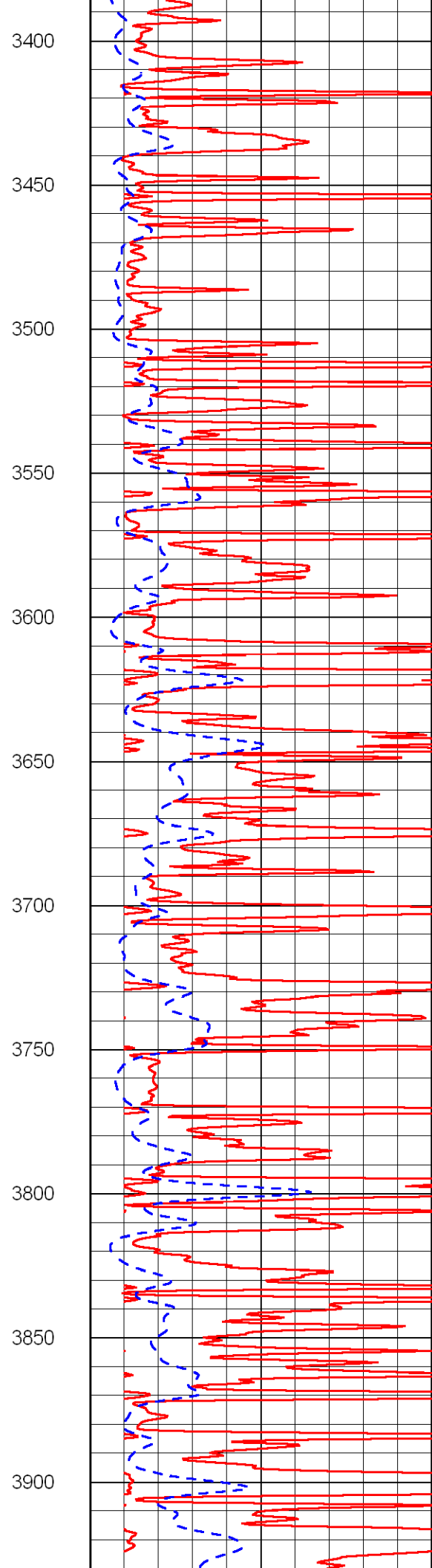
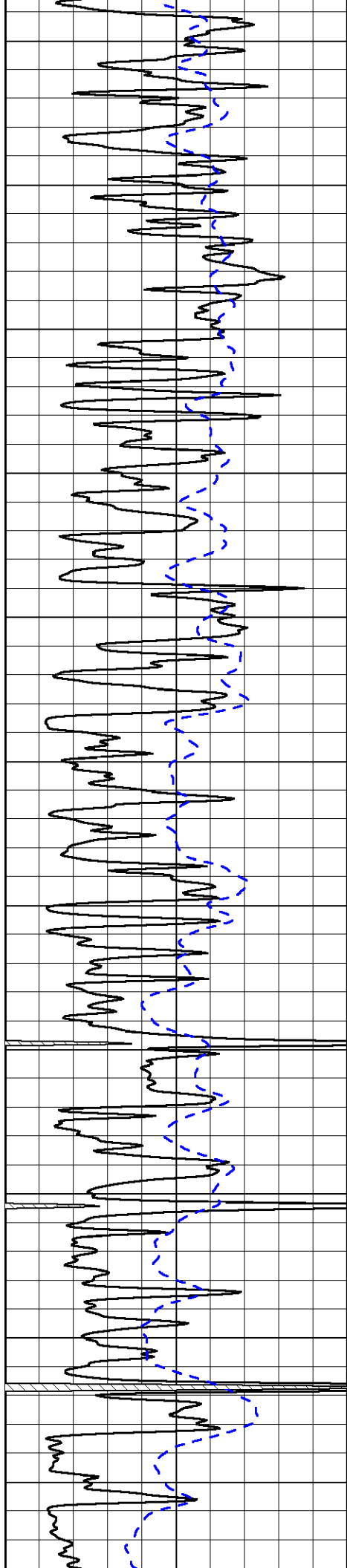
-87
-87
-87
-87
-87
-85
-85
-85
-85
-85
-85

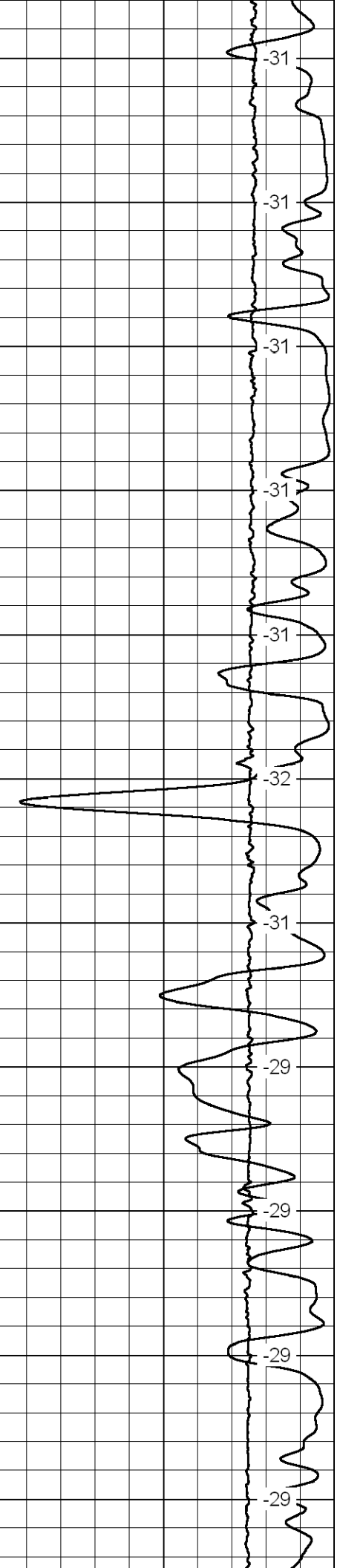
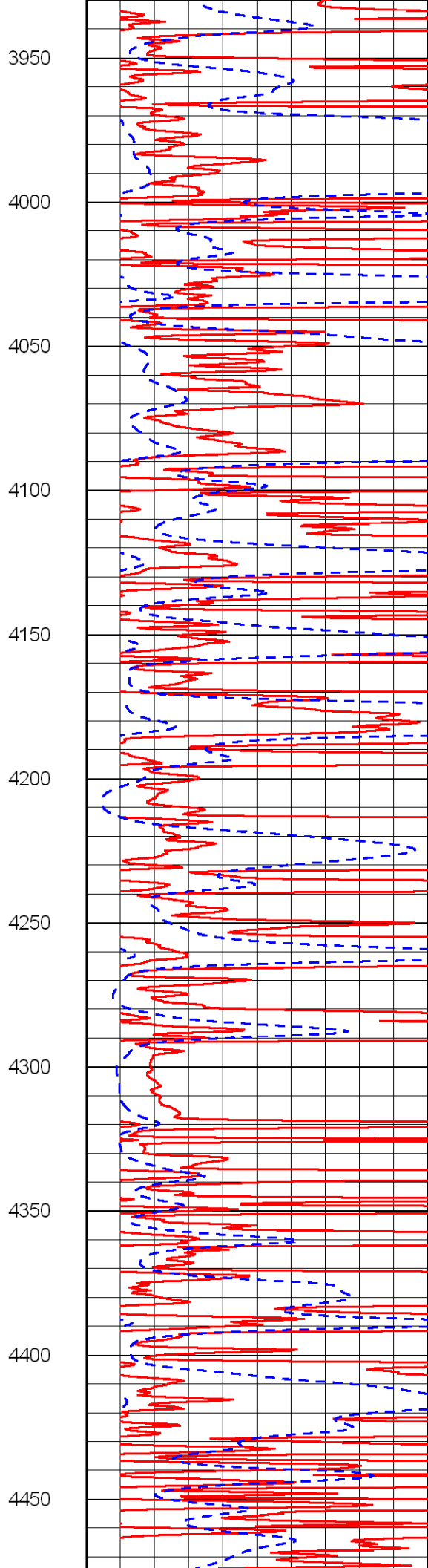
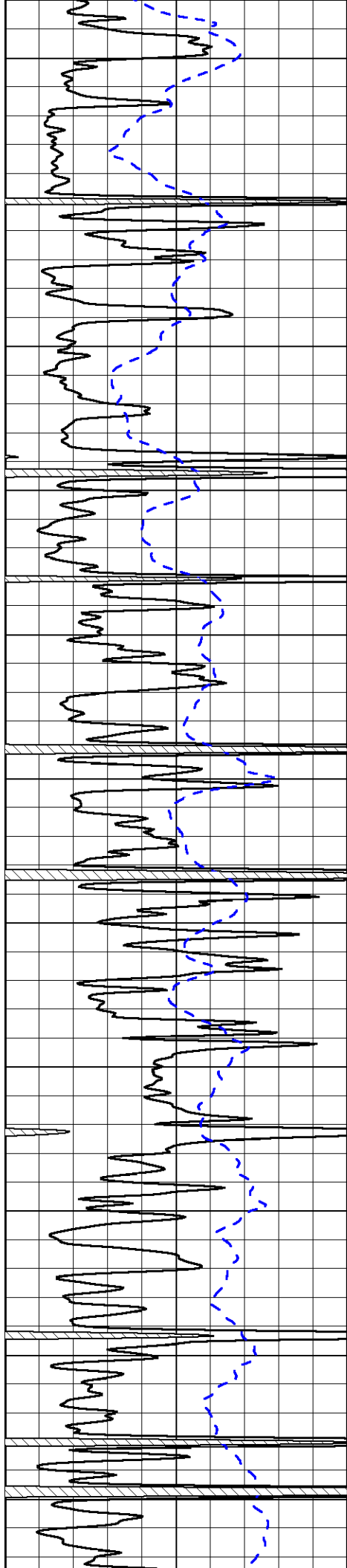


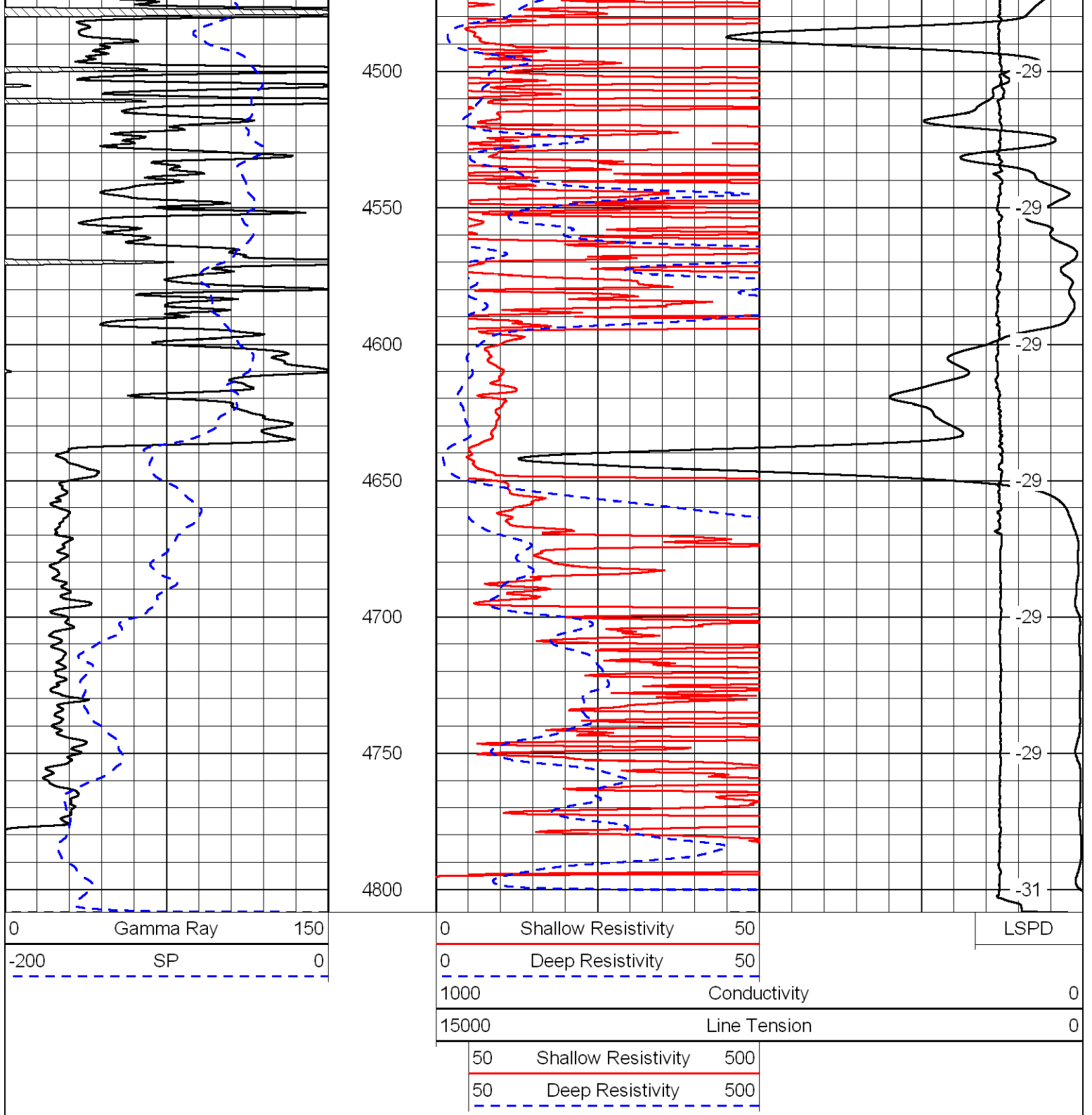




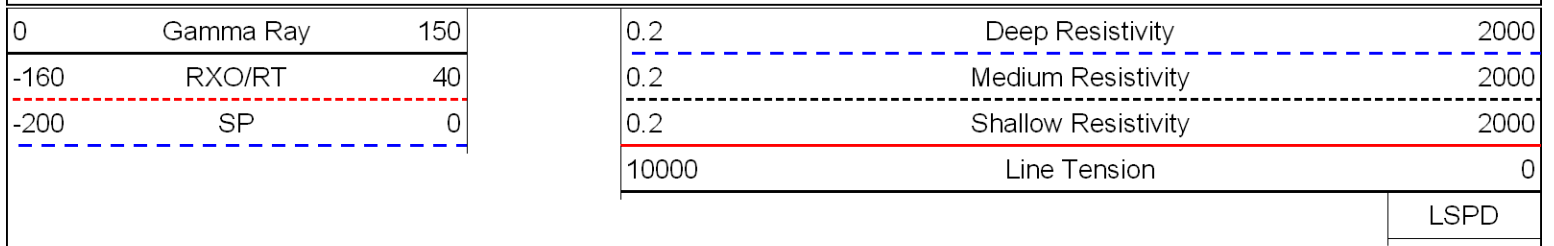


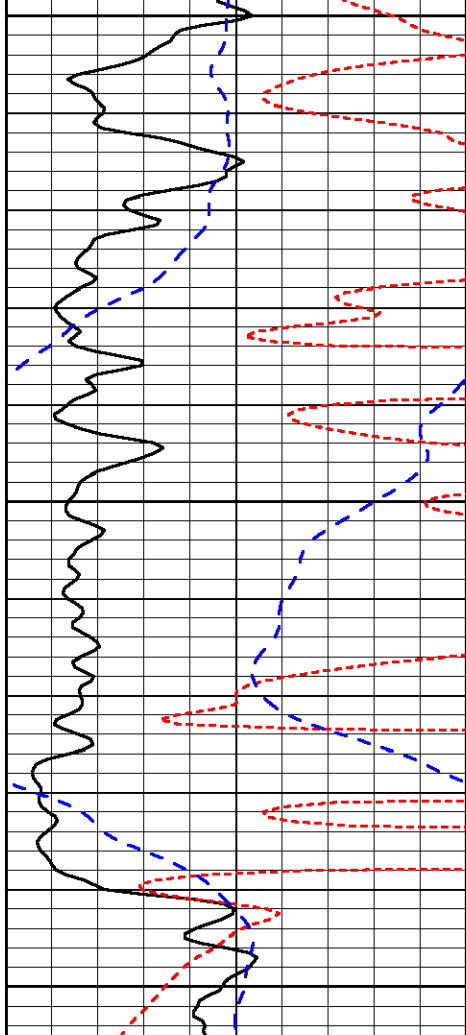






Database File: russhd.db
 Dataset Pathname: dil/russtk
 Presentation Format: dil
 Dataset Creation: Sat Oct 16 05:01:29 2010
 Charted by: Depth in Feet scaled 1:240



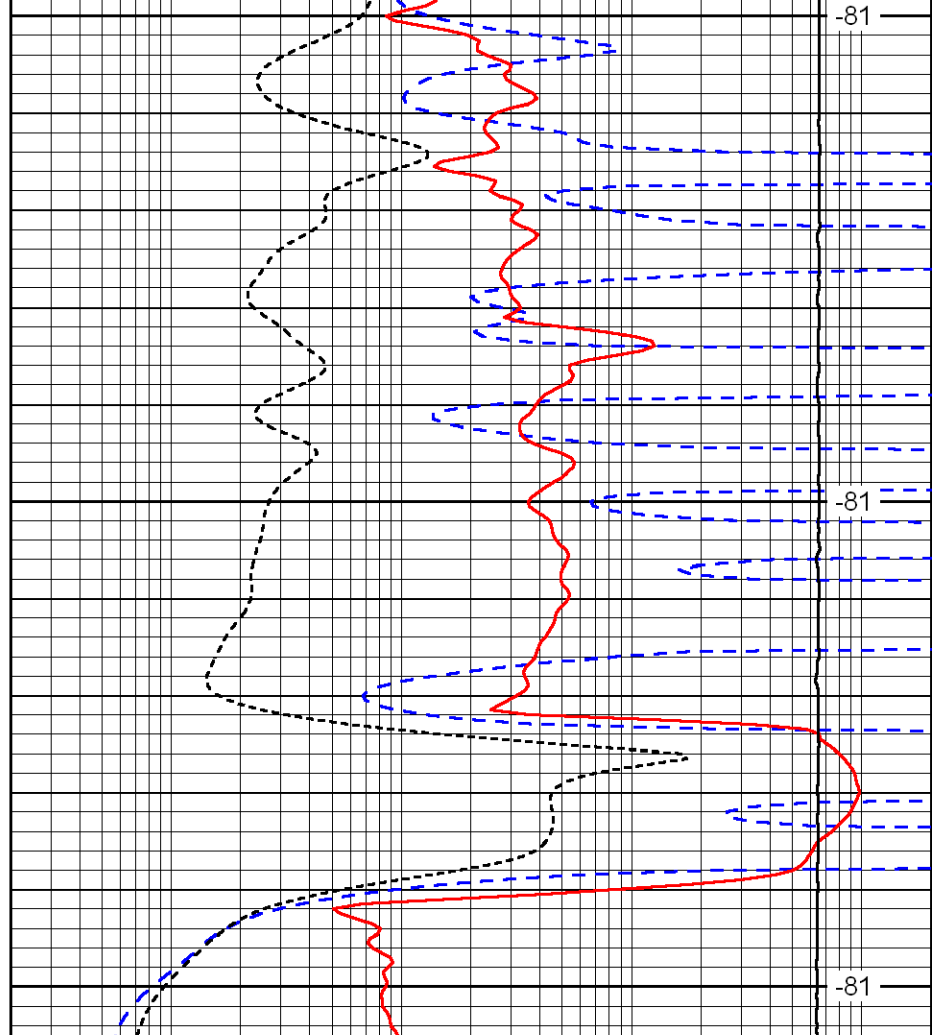


0	Gamma Ray	150
-160	RXO/RT	40
-200	SP	0

2300

2350

2400



0.2	Deep Resistivity	2000
0.2	Medium Resistivity	2000
0.2	Shallow Resistivity	2000
10000	Line Tension	0

-81

-81

-81

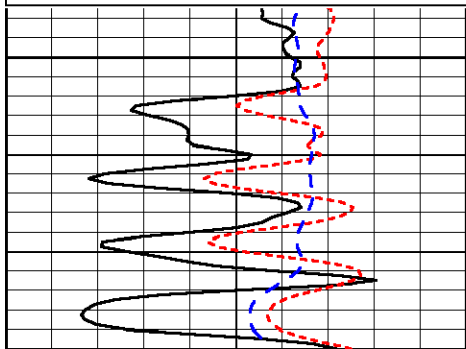
LSPD

Database File: russhd.db
 Dataset Pathname: dil/russtk
 Presentation Format: dil
 Dataset Creation: Sat Oct 16 05:01:29 2010
 Charted by: Depth in Feet scaled 1:240

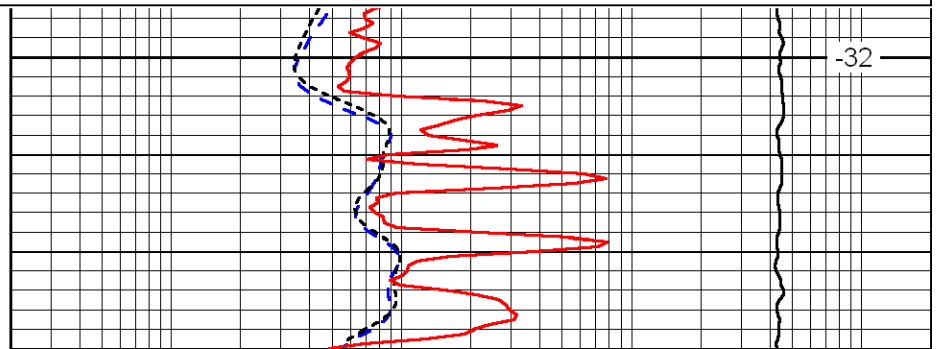
0	Gamma Ray	150
-160	RXO/RT	40
-200	SP	0

0.2	Deep Resistivity	2000
0.2	Medium Resistivity	2000
0.2	Shallow Resistivity	2000
10000	Line Tension	0

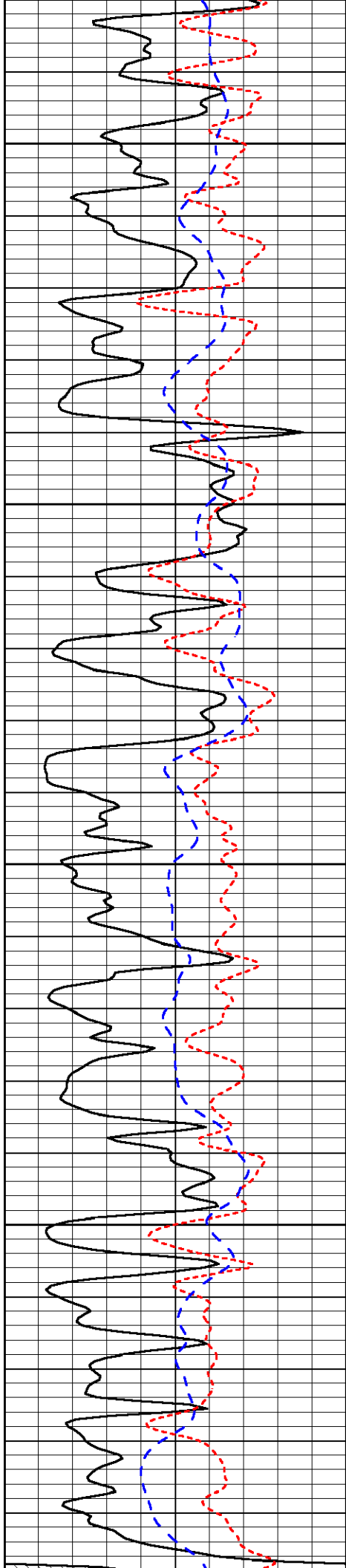
LSPD



3500



-32

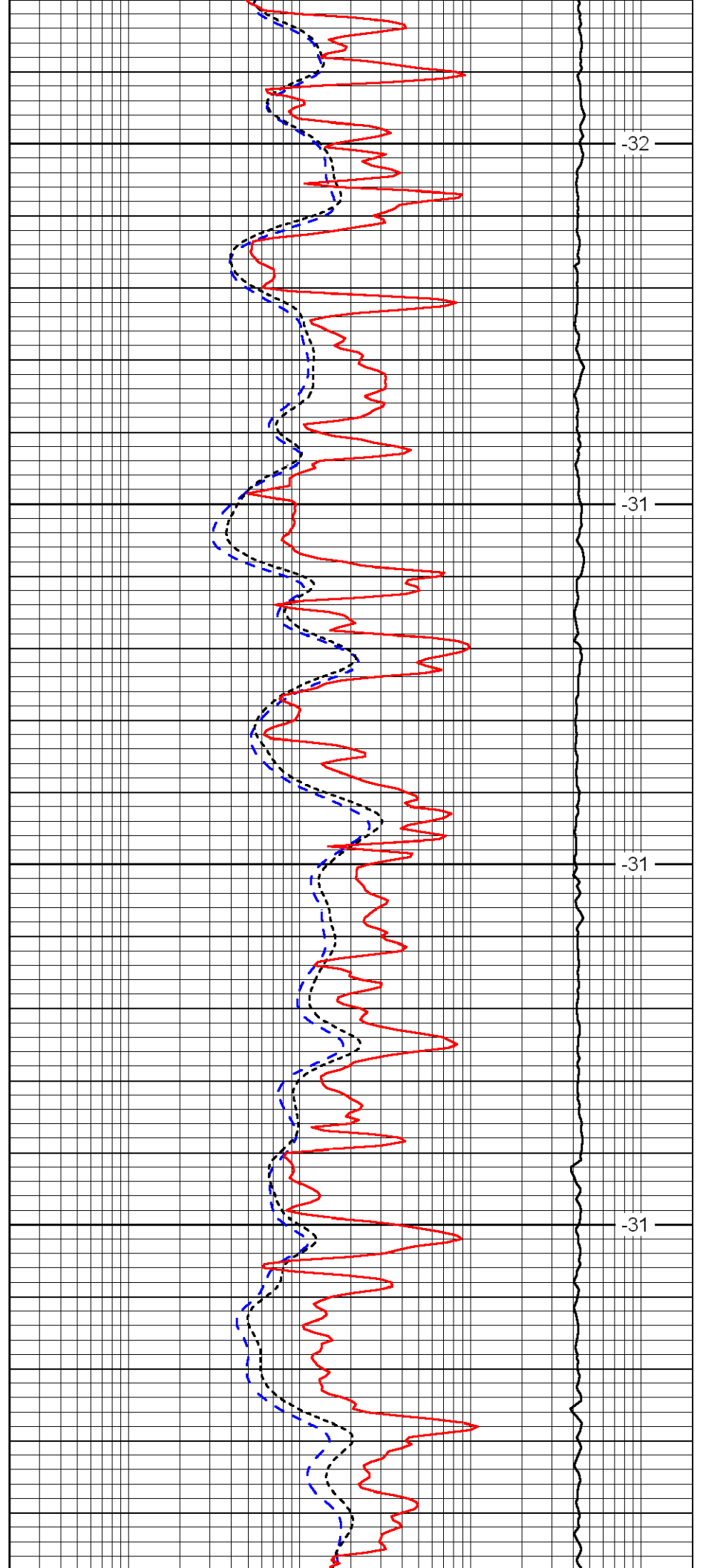


3550

3600

3650

3700

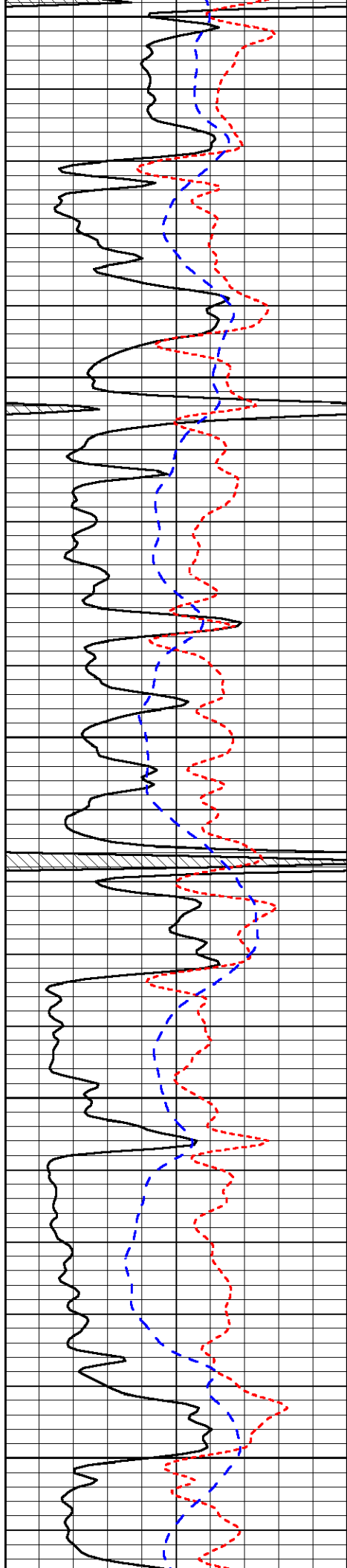


-32

-31

-31

-31



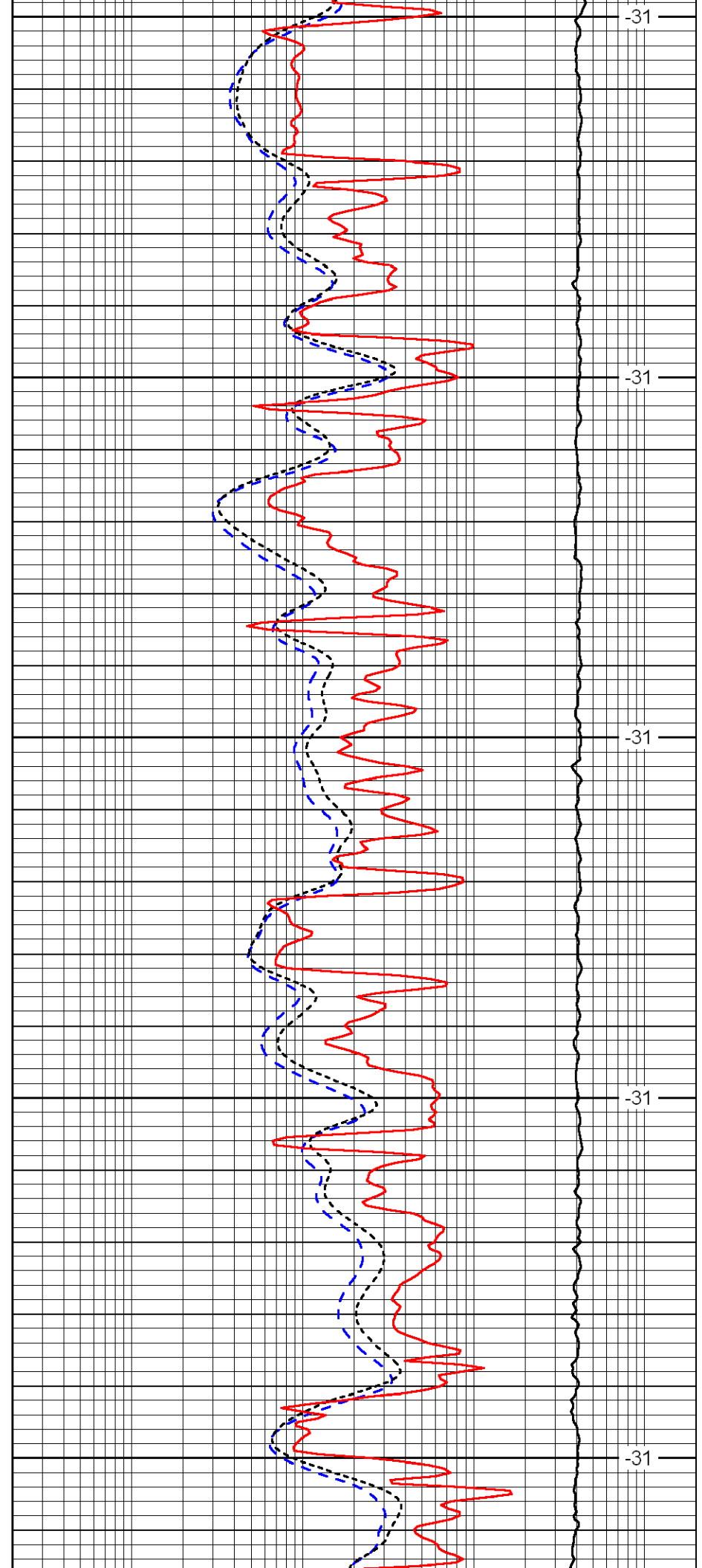
3750

3800

3850

3900

3950



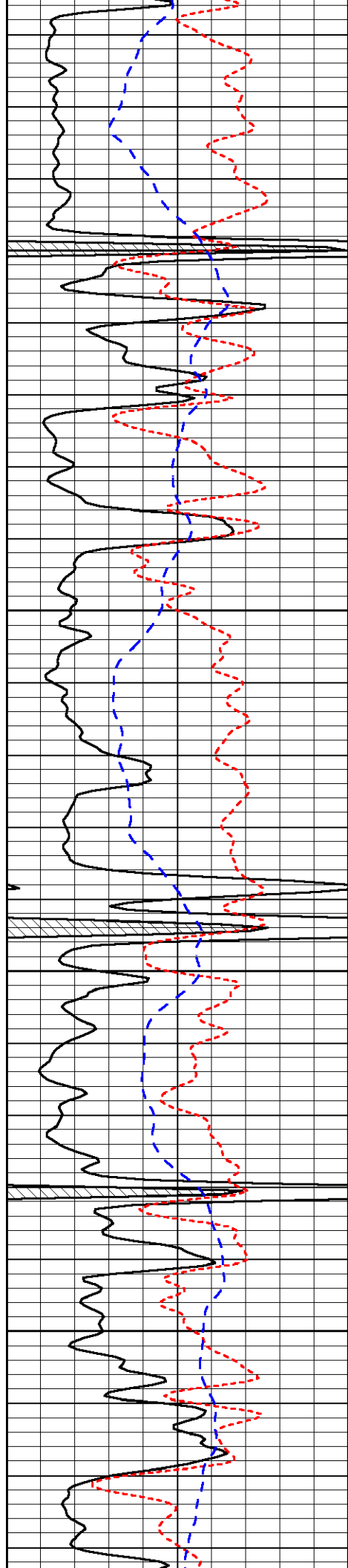
-31

-31

-31

-31

-31

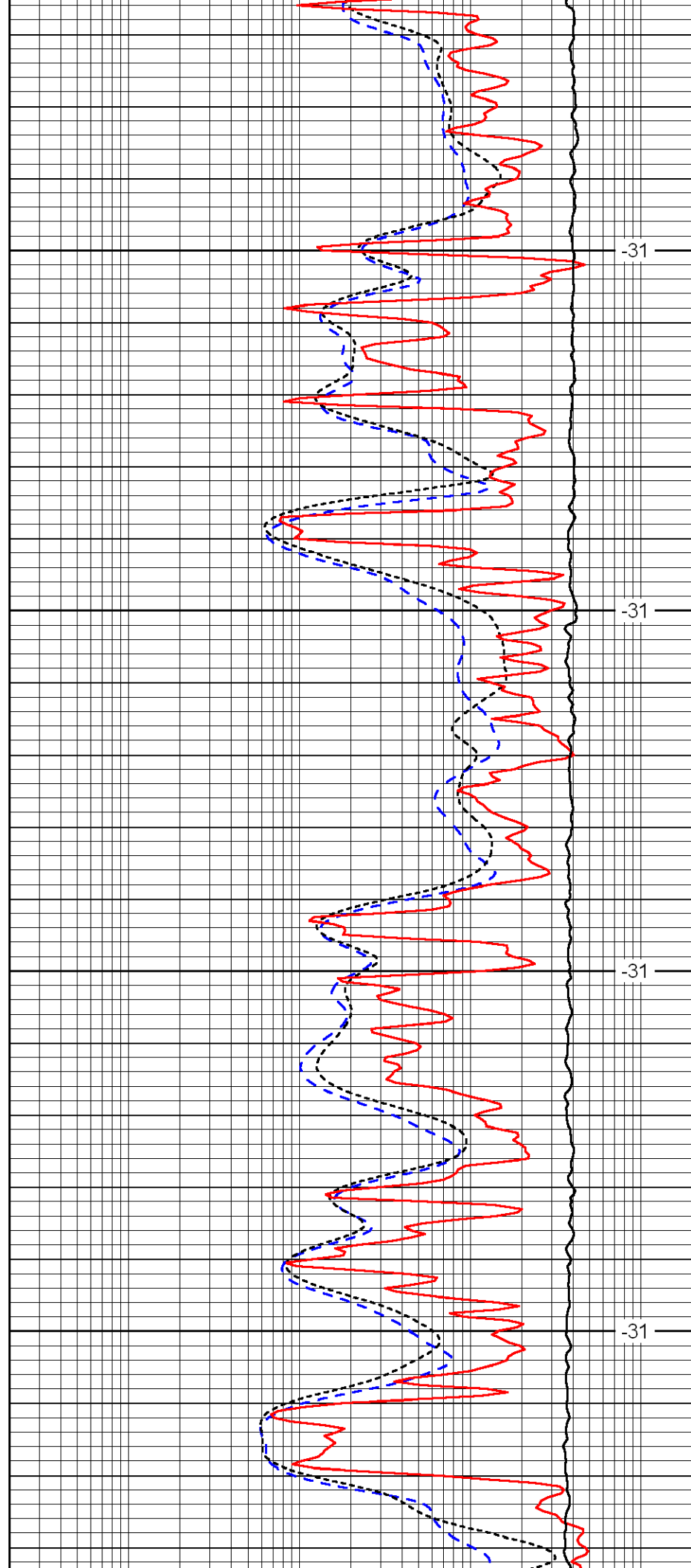


4000

4050

4100

4150

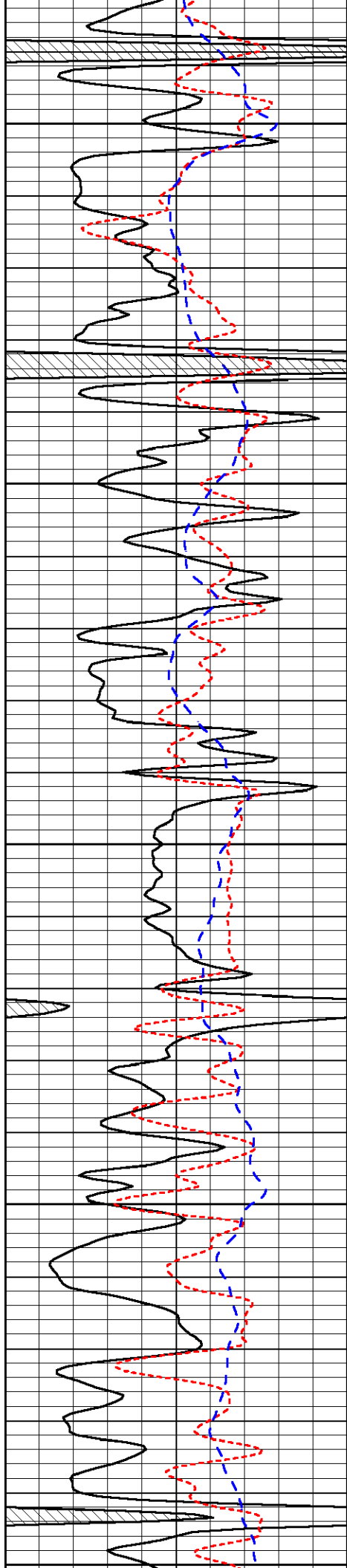


-31

-31

-31

-31



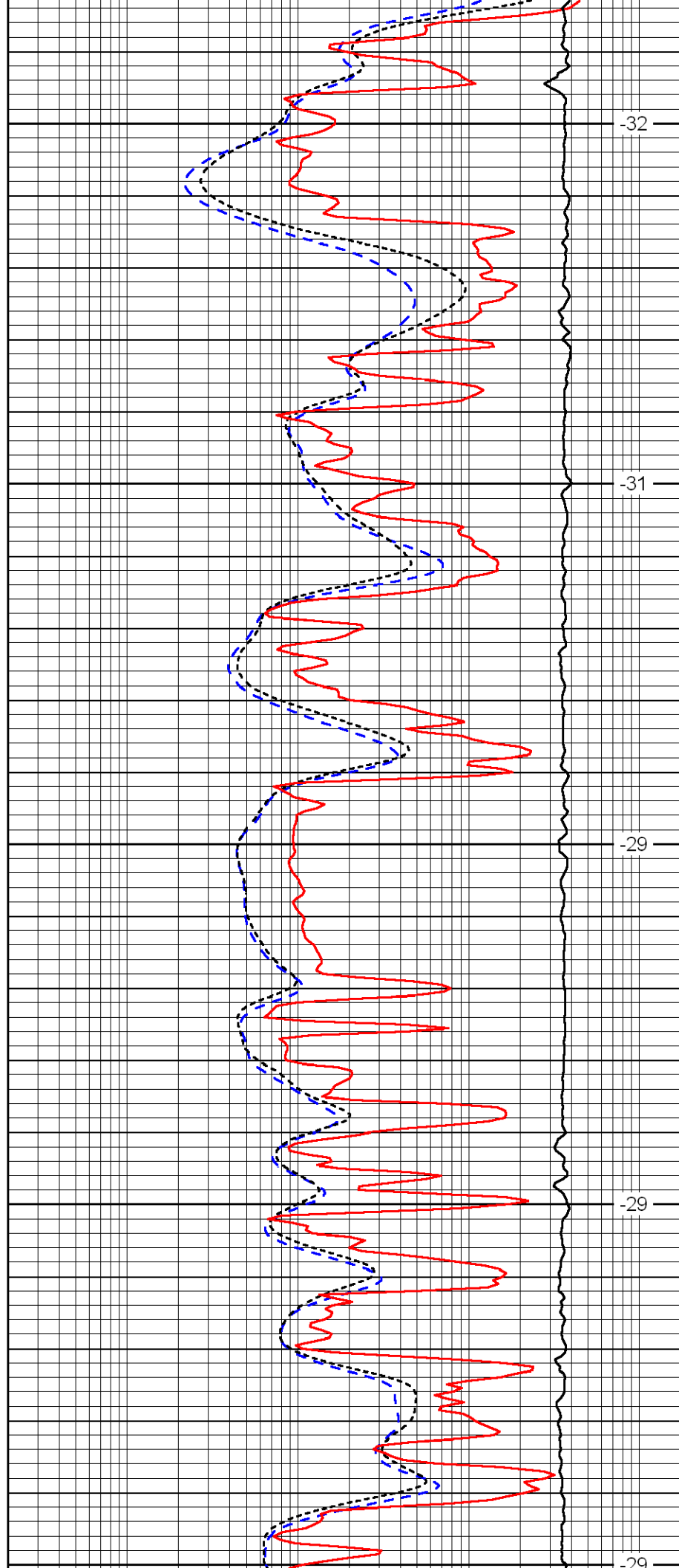
4200

4250

4300

4350

4400



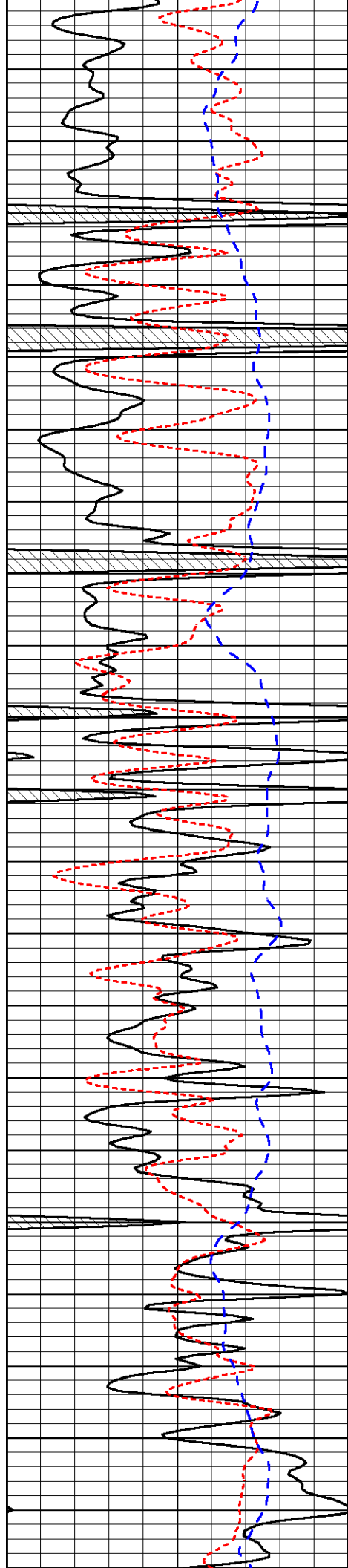
-32

-31

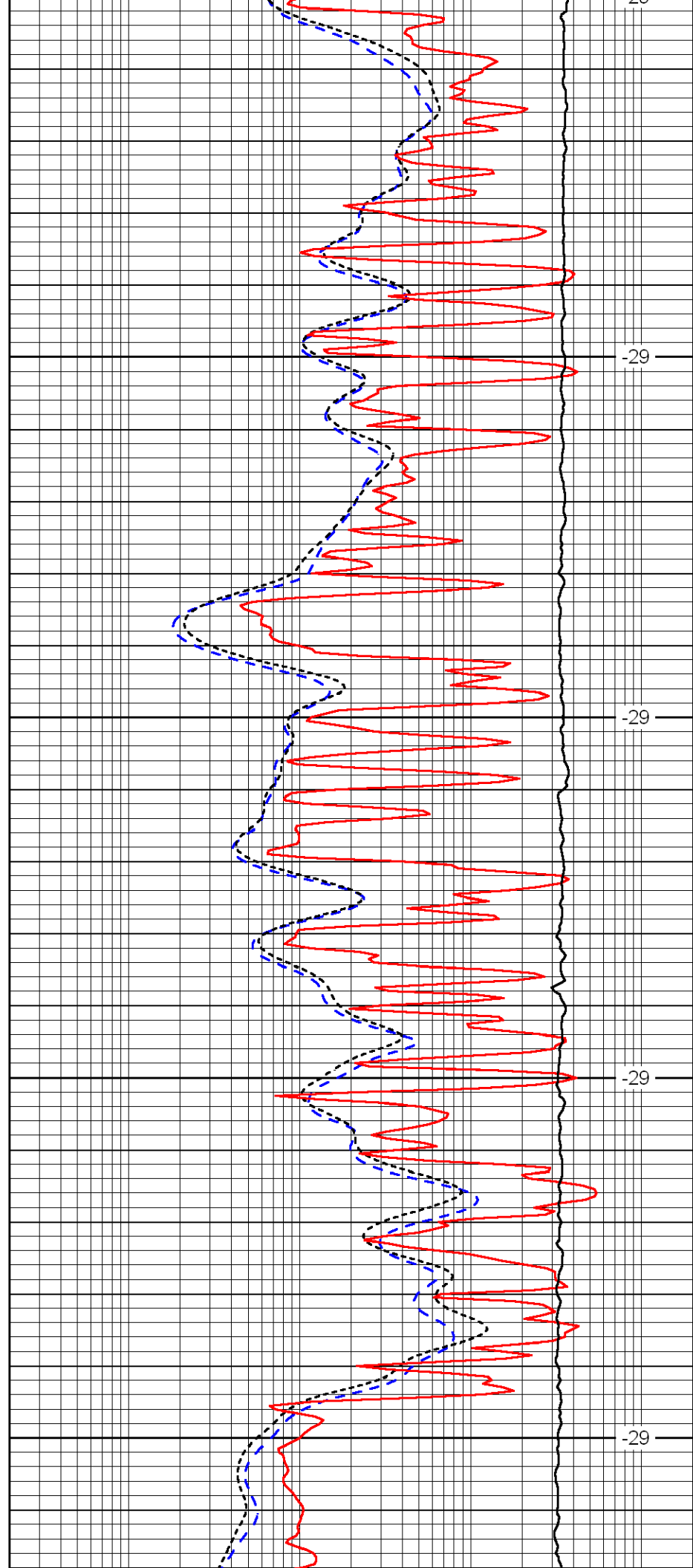
-29

-29

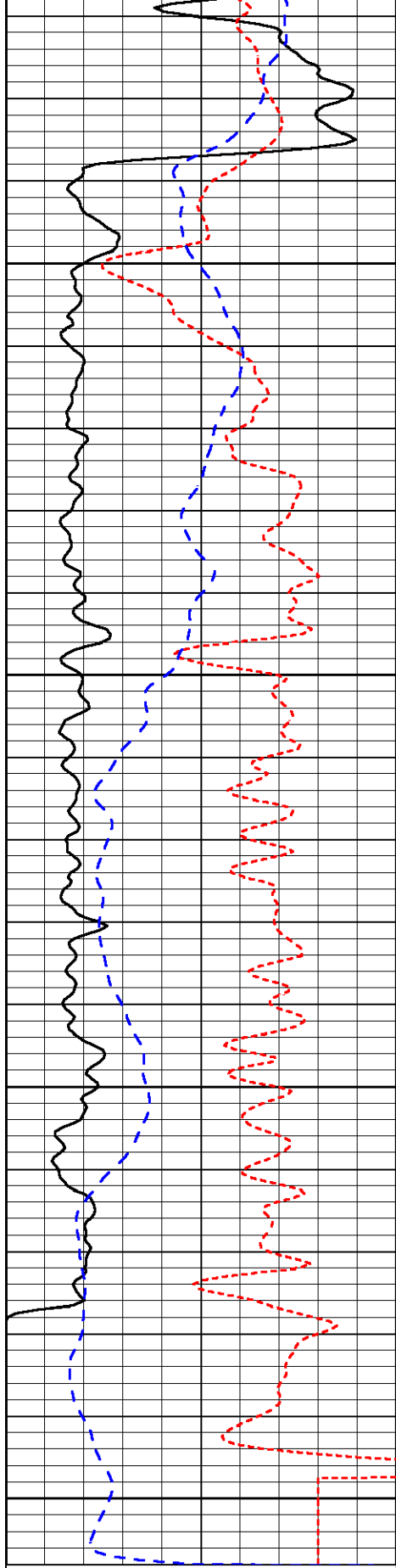
-29



4450
4500
4550
4600



-29
-29
-29
-29



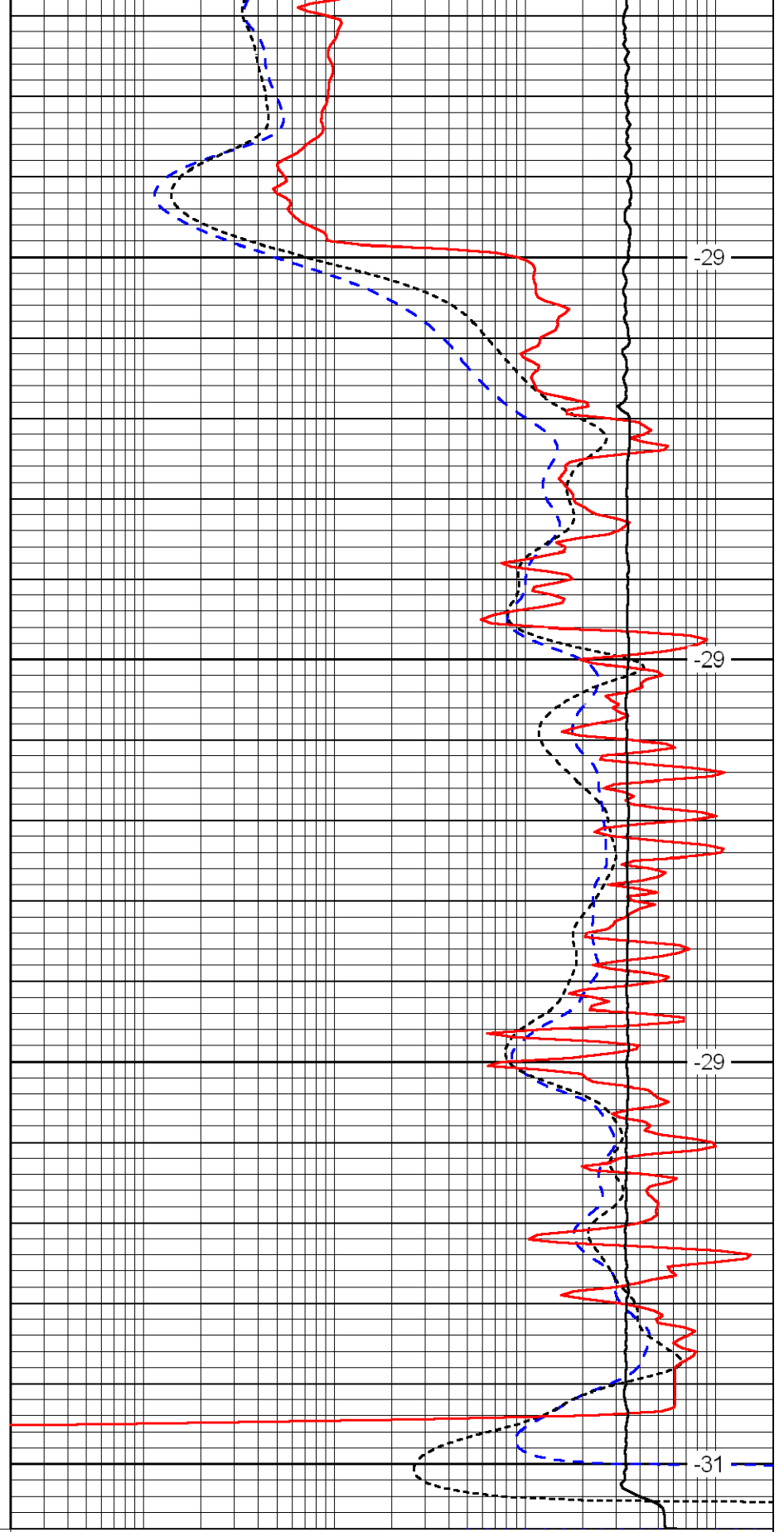
0	Gamma Ray	150
-160	RXO/RT	40
-200	SP	0

4650

4700

4750

4800



-29

-29

-29

-31

0.2	Deep Resistivity	2000
0.2	Medium Resistivity	2000
0.2	Shallow Resistivity	2000
10000	Line Tension	0

LSPD