



SUPERIOR
Hays,
Kansas

MICRO
LOG

Company VAL ENERGY, INC.
Well CAROL MEYER #1-24
Field
County BARBER
State KANSAS

Company VAL ENERGY, INC.
Well CAROL MEYER #1-24
Field
County BARBER State KANSAS

Location: API # : 15-007-23647-0000
410' FNL & 2105' FEL
SE - NW - NW - NE
SEC 24 TWP 34S RGE 11W
Permanent Datum GROUND LEVEL Elevation 1346
Log Measured From KELLY BUSHING 11' A.G.L.
Drilling Measured From KELLYB BUSHING
Other Services
CDL/CNL
DIL
Elevation
K.B. 1357
D.F. 1355
G.L. 1346

Date	2/6/11
Run Number	TWO
Depth Driller	4835
Depth Logger	4830
Bottom Logged Interval	4828
Top Log Interval	2750
Casing Driller	8 5/8" @ 219'
Casing Logger	220'
Bit Size	7 7/8"
Type Fluid in Hole	CHEMICAL MUD
Density / Viscosity	9.7/59
pH / Fluid Loss	8.5/16.8
Source of Sample	FLOWLINE
Rin @ Meas. Temp	0.45 @ 90F
Rmf @ Meas. Temp	0.34 @ 90F
Rmc @ Meas. Temp	0.54 @ 90F
Source of Rmf / Rmc	MEASUREMENT
Rin @ BHT	0.33 @ 123F
Time Circulation Stopped	2 HOURS
Time Logger on Bottom	
Maximum Recorded Temperature	123F
Equipment Number	0836
Location	HAYS, KANSAS
Recorded By	JEFF GRONEMEG
Witnessed By	STEVE VANBUSKIRK

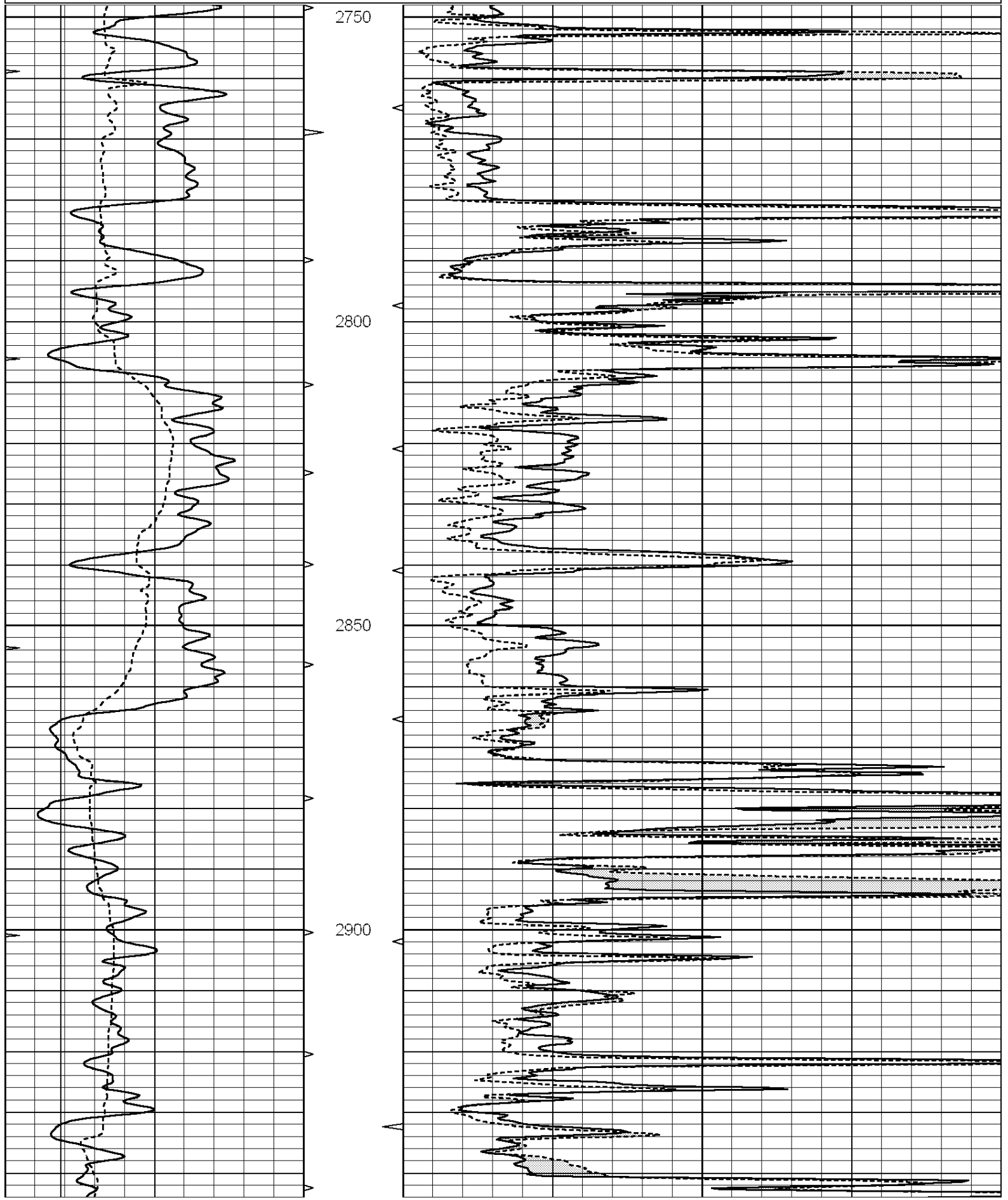
<<< Fold Here >>>

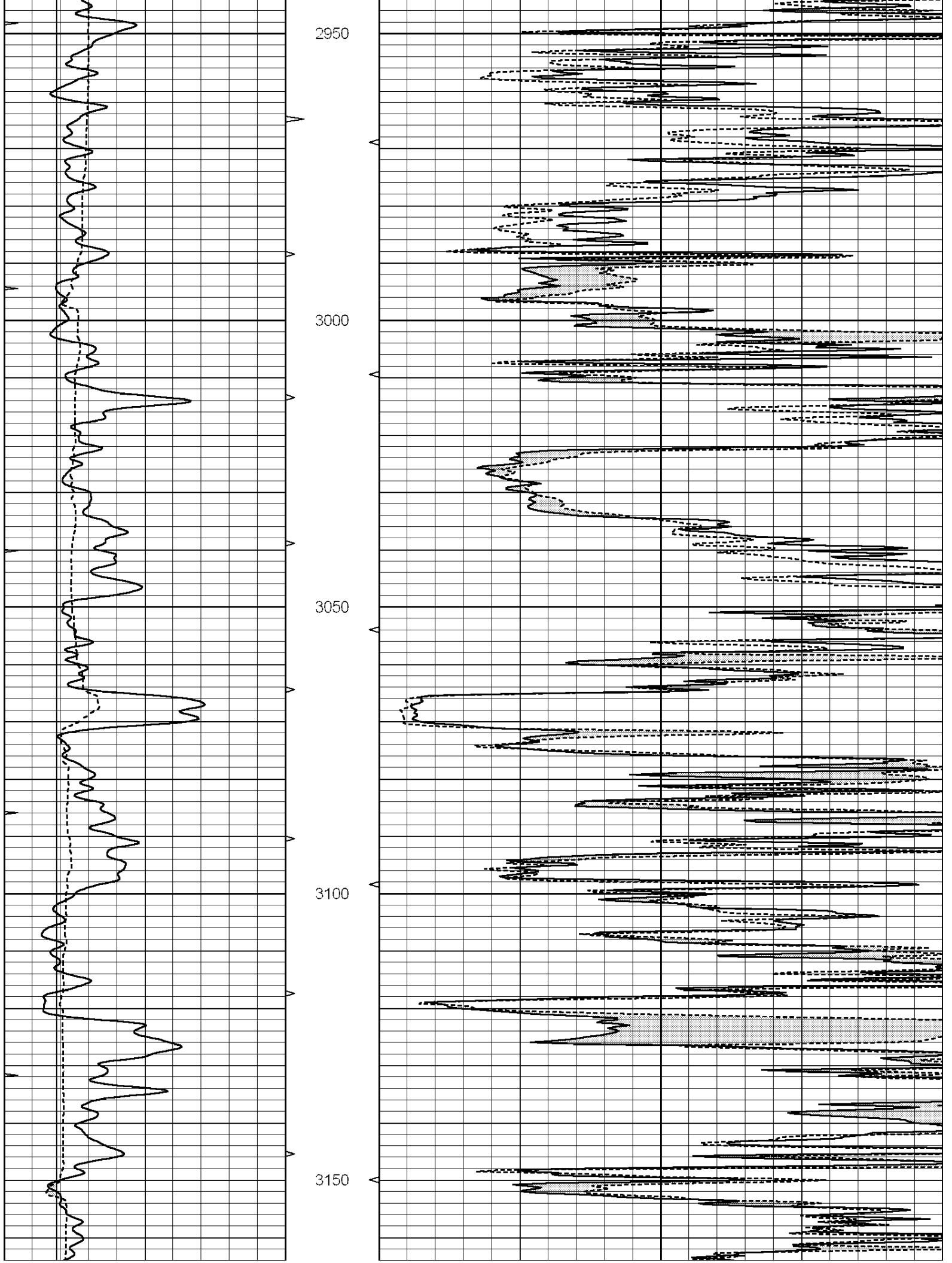
All interpretations are opinions based on inferences from electrical or other measurements and we cannot and do not guarantee the accuracy or correctness of any interpretation, and we shall not, except in the case of gross or willful negligence on our part, be liable or responsible for any loss, costs, damages, or expenses incurred or sustained by anyone resulting from any interpretation made by any of our officers, agents or employees. These interpretations are also subject to our general terms and conditions set out in our current Price Schedule.

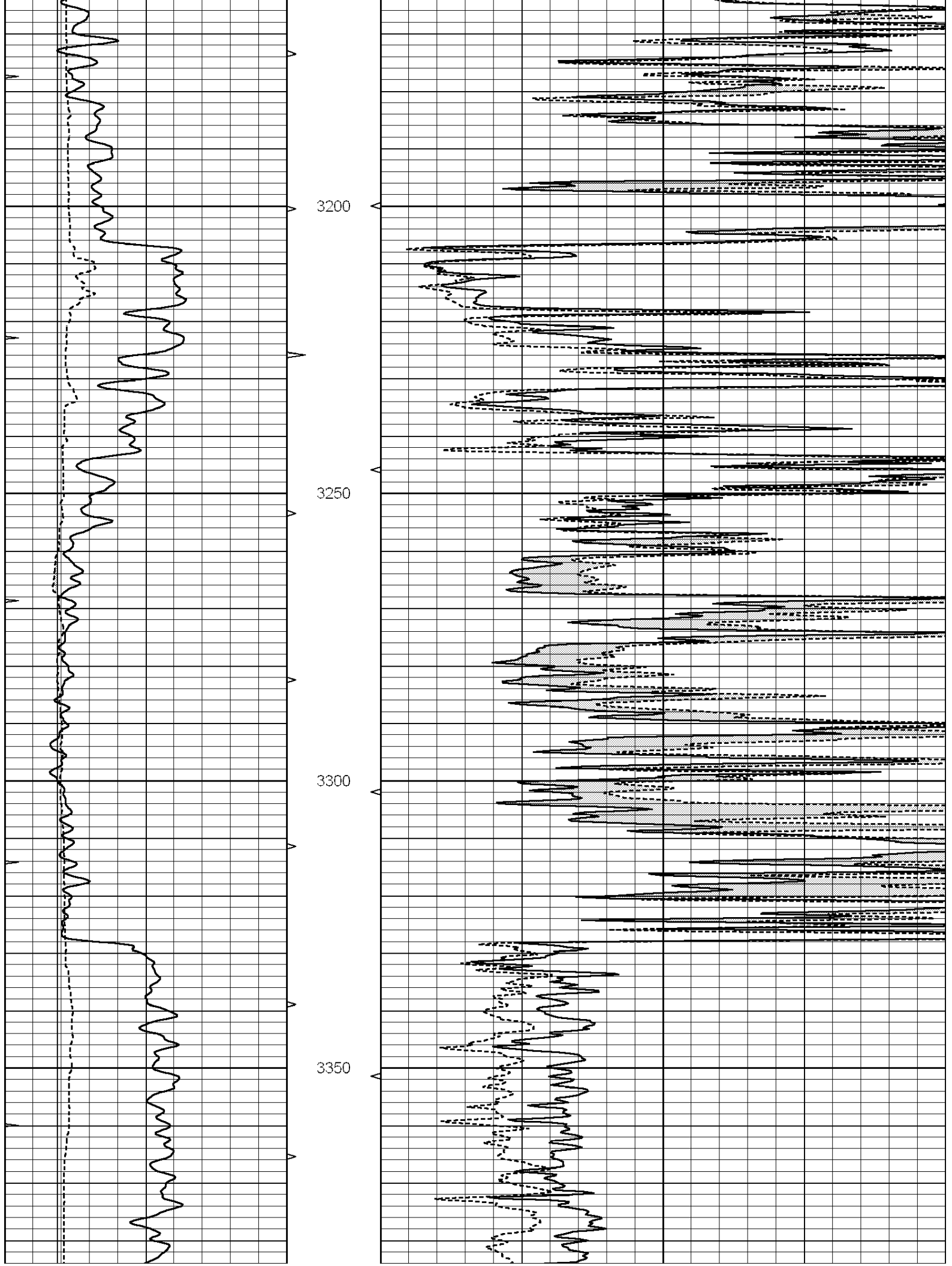
Comments

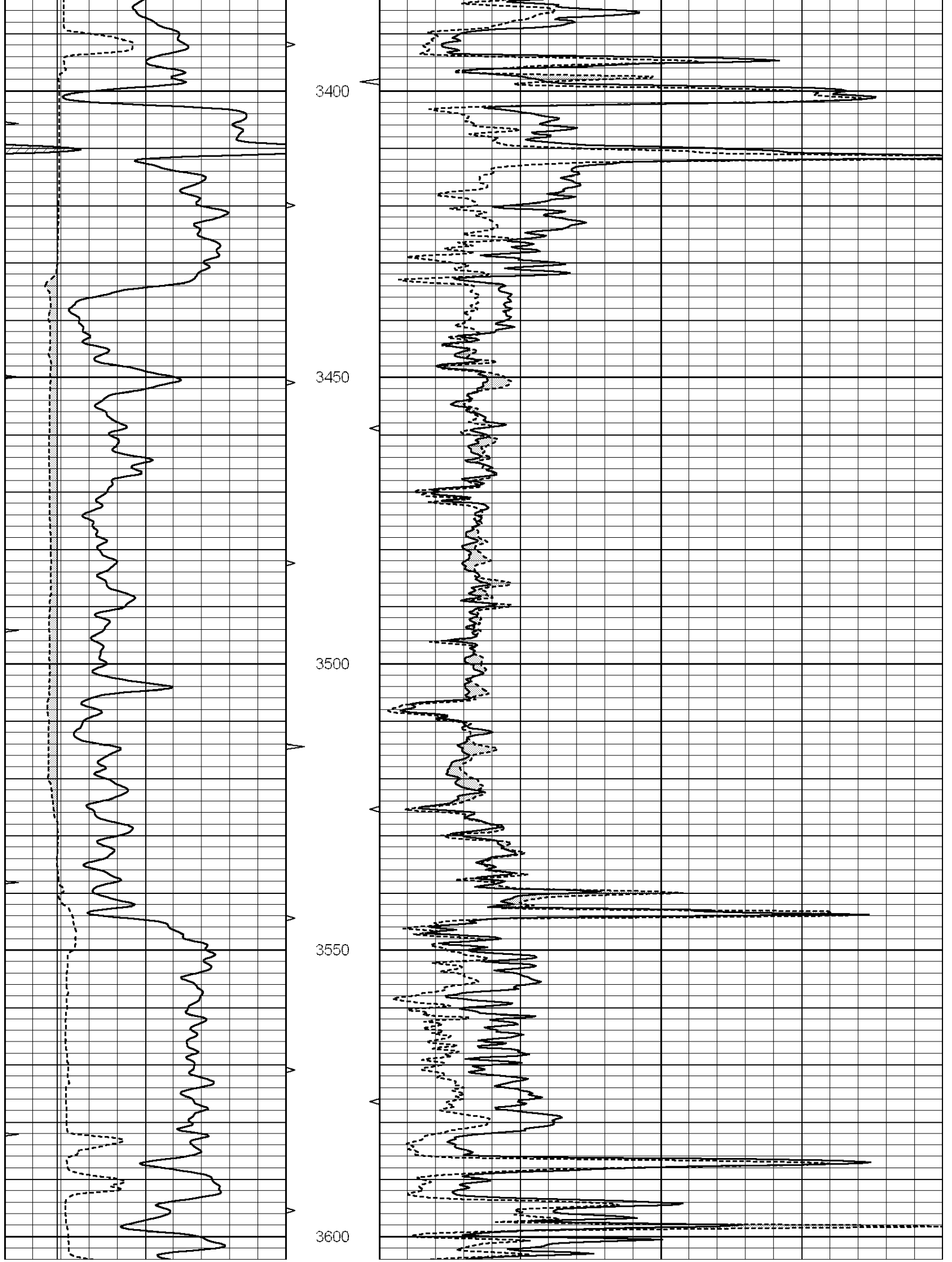
THANK YOU FOR USING SUPERIOR WELL SERVICE HAYS, KANSAS (785) 628-6395
DIRECTIONS
MEDICINE LODGE, KS - SOUTH TO GERLANE BLKTOP - 7 MILES EAST & SOUTH TO BETHEL RD
3 MILES SOUTH TO HARGIS RD - 1/2 MILE EAST - SOUTH INTO ON EAST SIDE OF FARM HOUSE

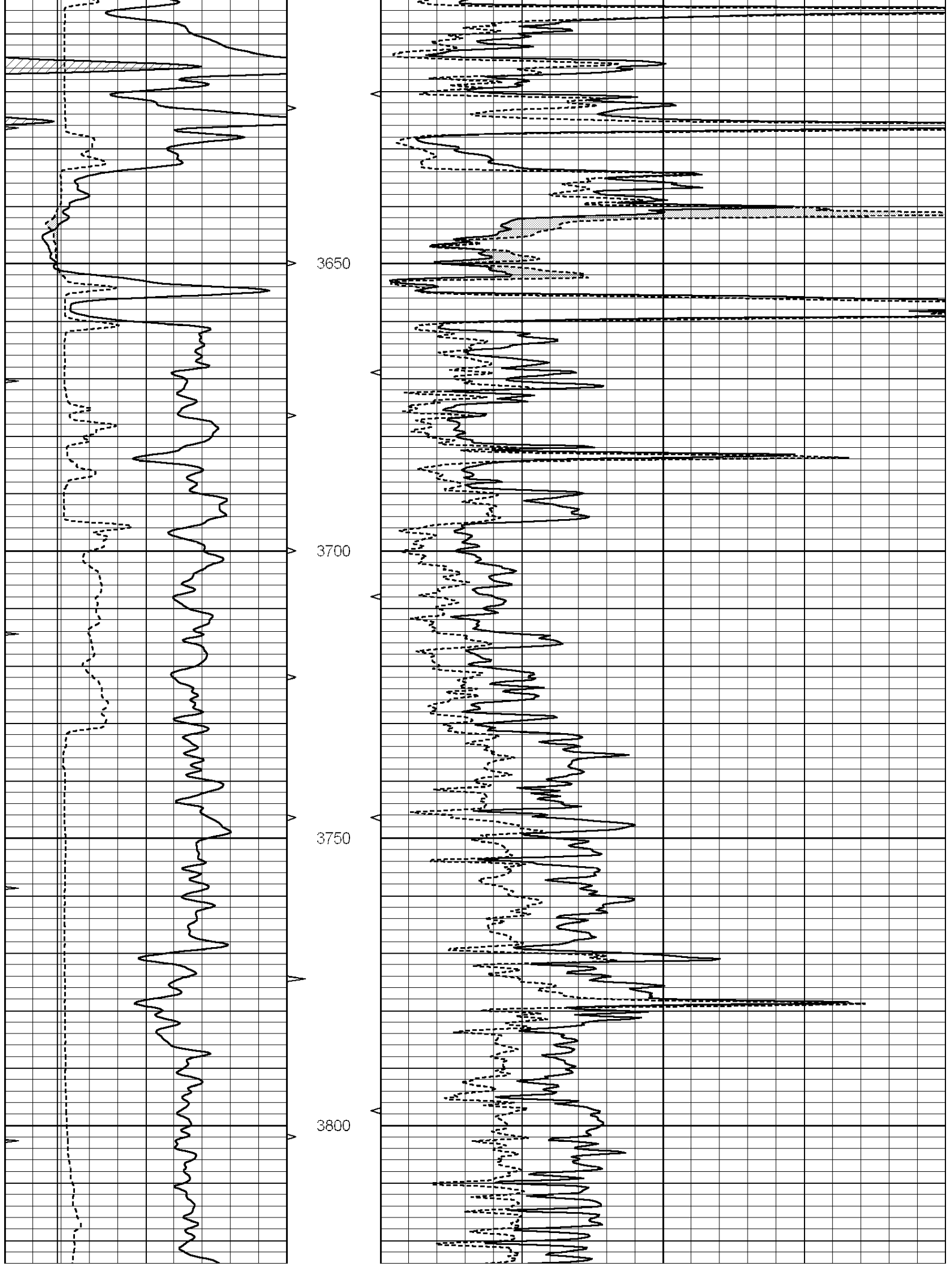
0	GAMMA RAY (GAPI)	150	ABHV	0	MEL1.5 (Ohm-m)	40
6	CALIPER (in)	16	10 (ft3)	0 0	MEL2.0 (Ohm-m)	40
0	MINMK	20	TBHV			
			0 (ft3)	10		

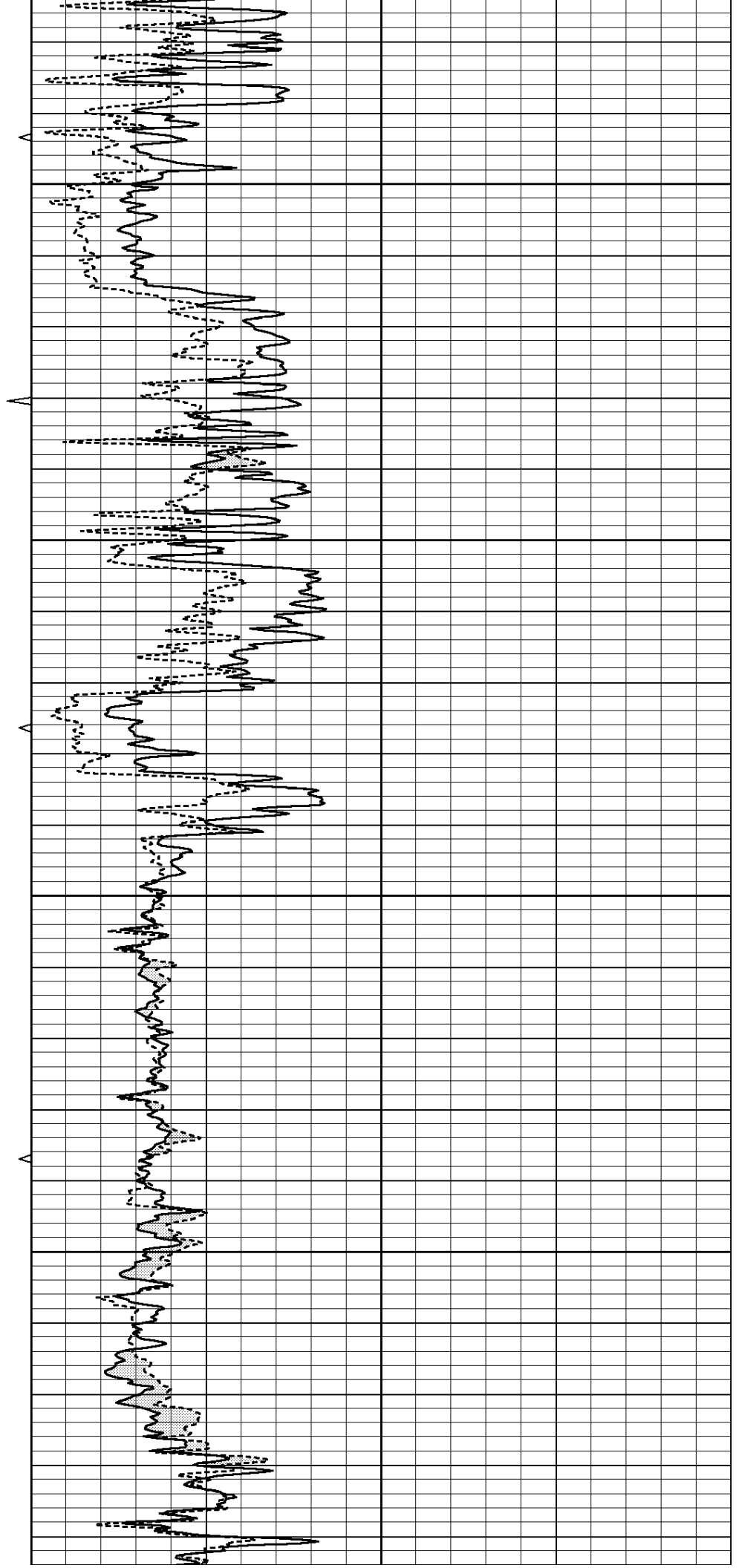
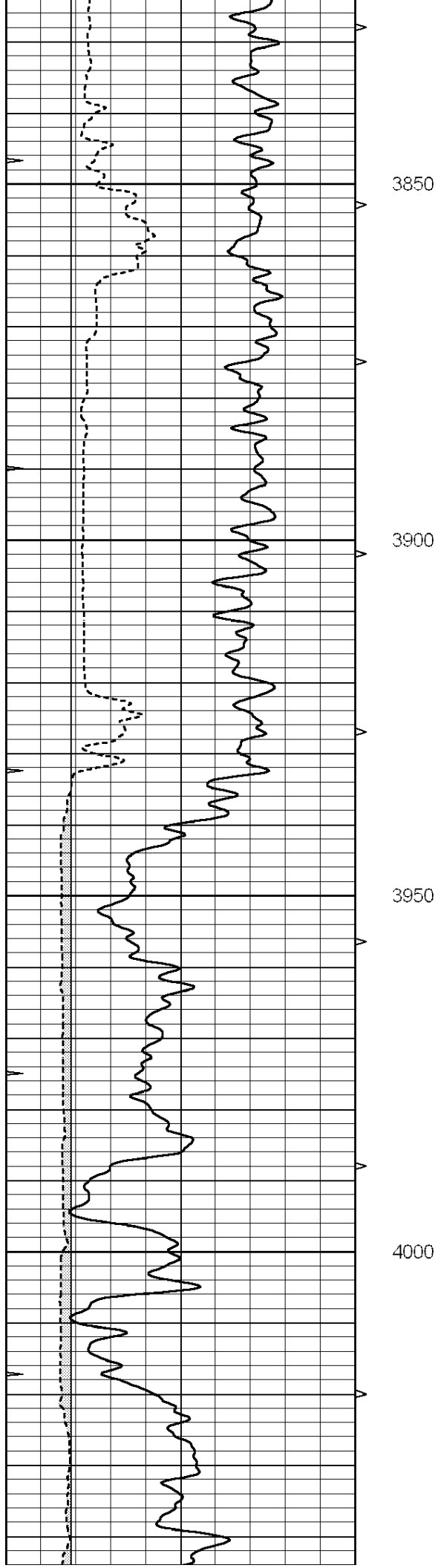


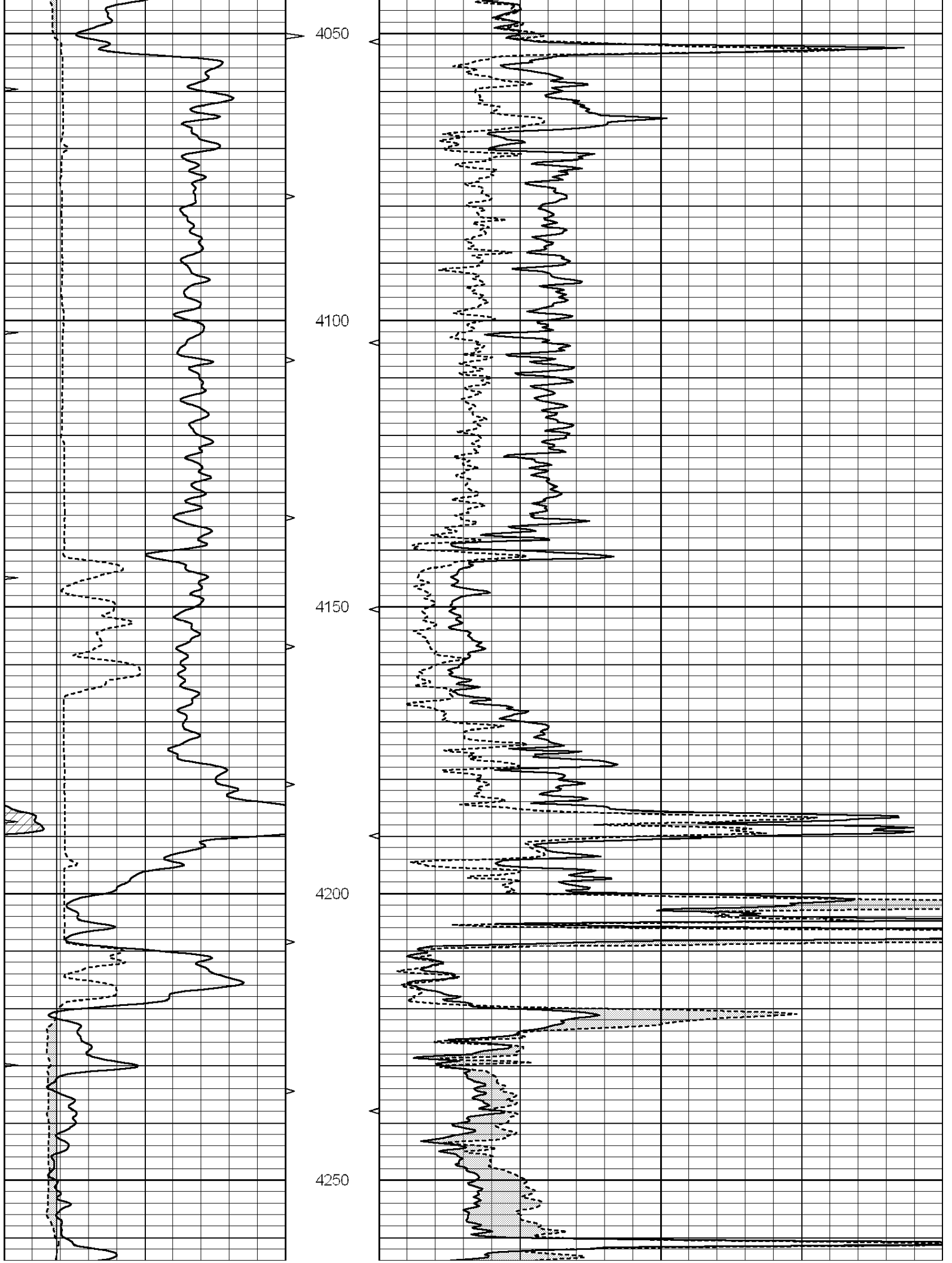


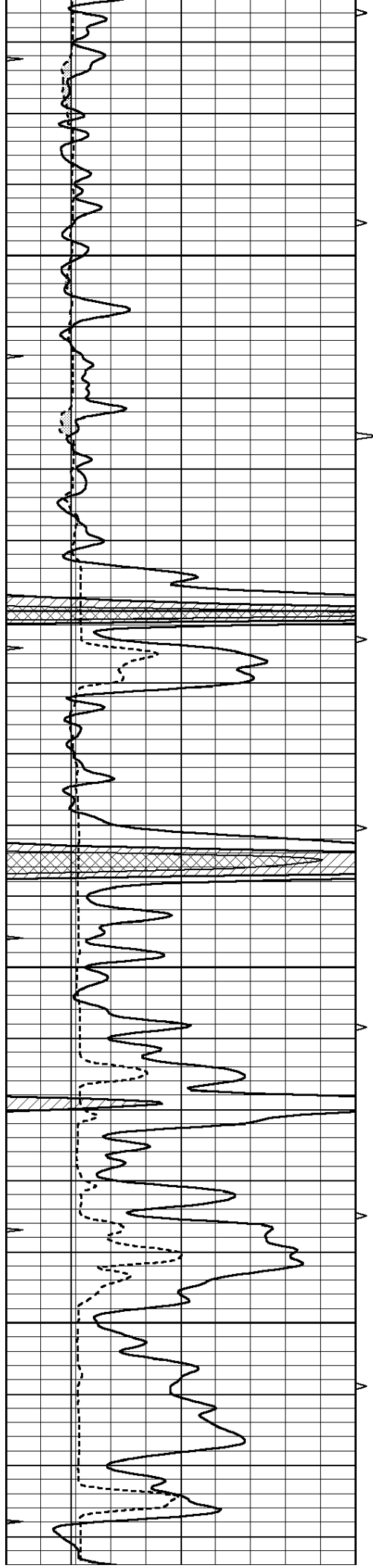










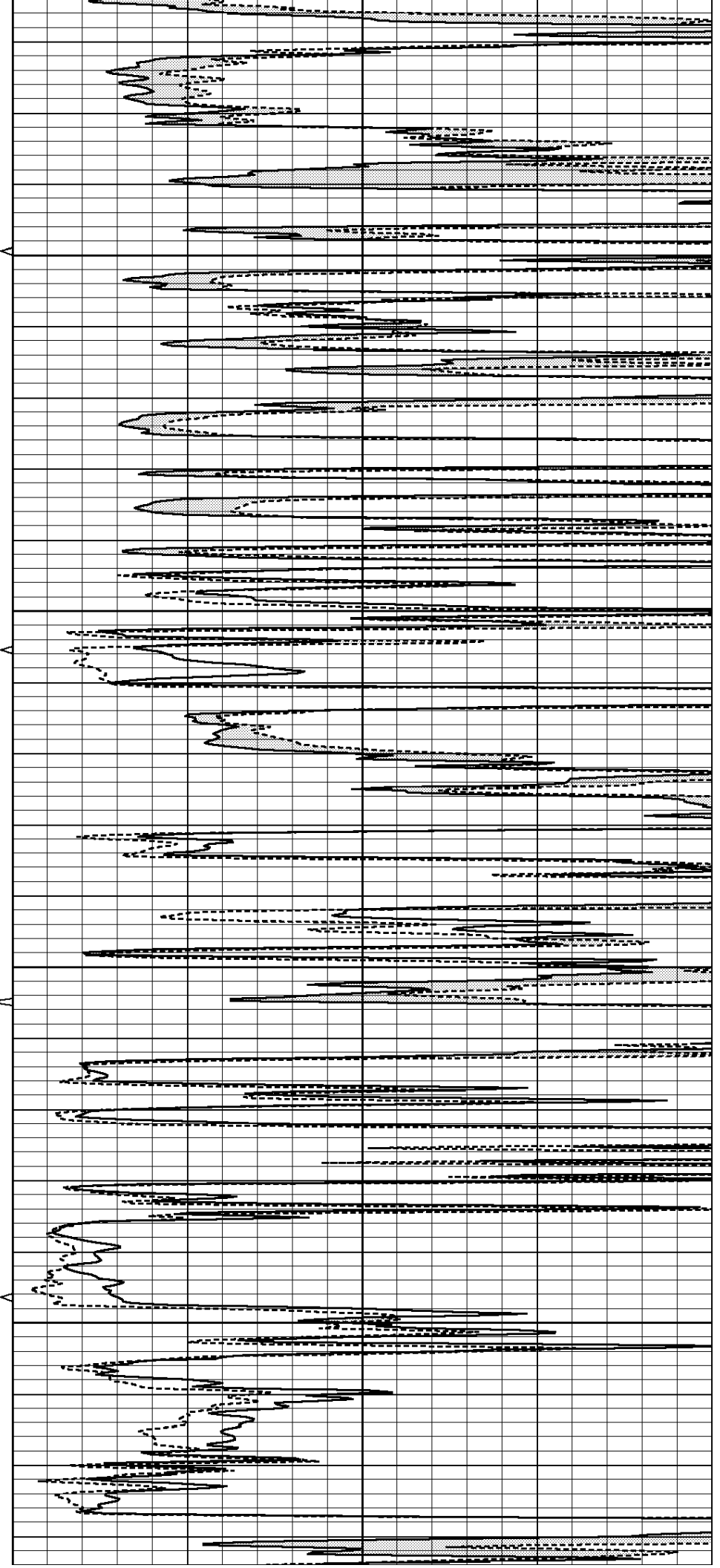


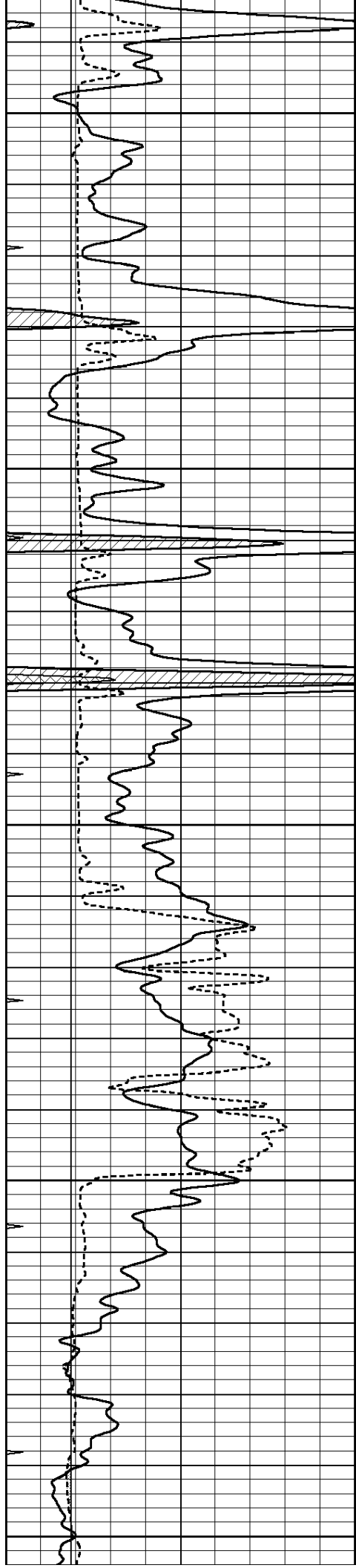
4300

4350

4400

4450





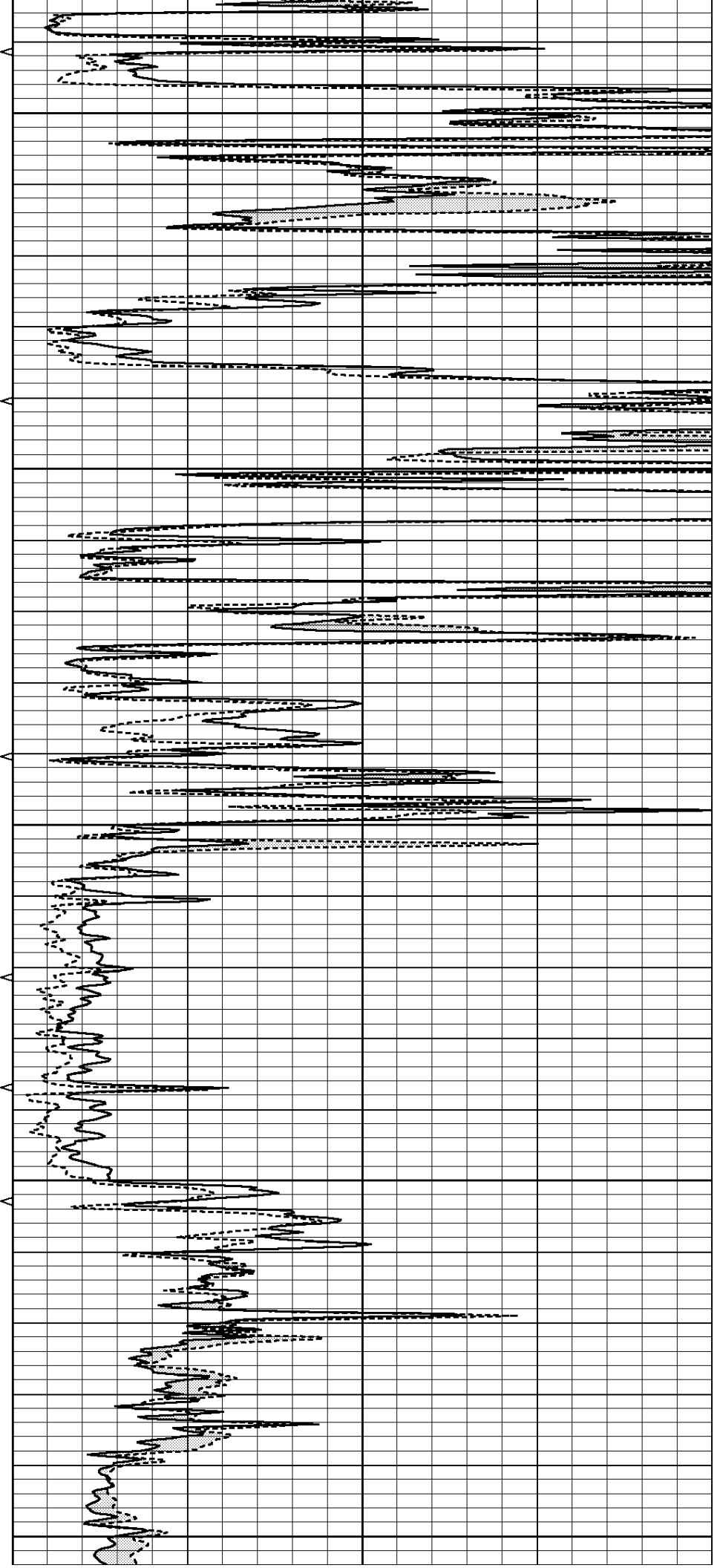
4500

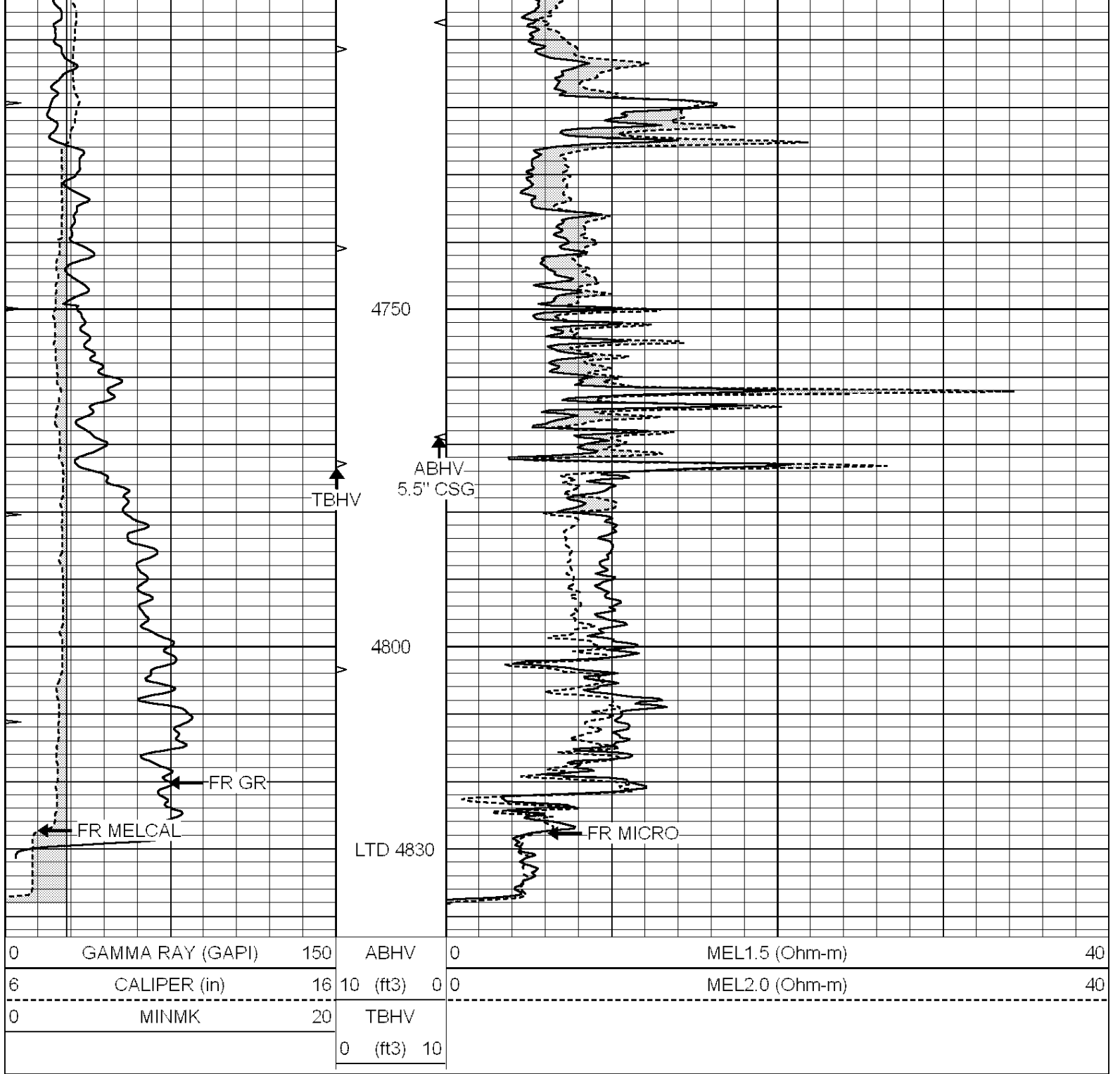
4550

4600

4650

4700





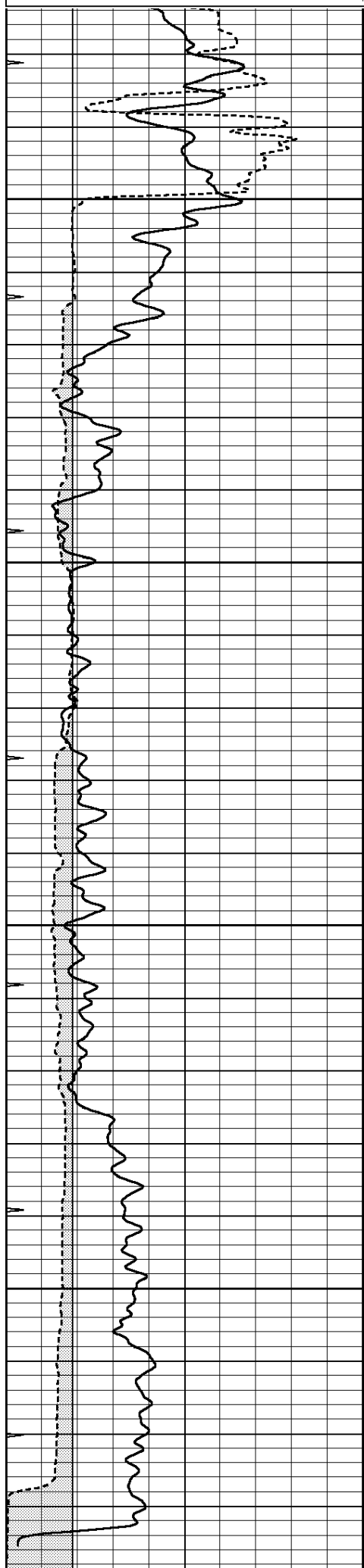
SUPERIOR
Hays,
Kansas

REPEAT SECTION

Database File: 006289ddn.db
 Dataset Pathname: pass4.1
 Presentation Format: micro
 Dataset Creation: Wed Feb 16 19:06:41 2011 by Calc Open-Cased 090629
 Charted by: Depth in Feet scaled 1:240

0	GAMMA RAY (GAPI)	150	ABHV	0	MEL1.5 (Ohm-m)	40
6	CALIPER (in)	16	10 (ft3)	0 0	MEL2.0 (Ohm-m)	40
0	MINMK	20	TBHV			

0 (ft3) 10

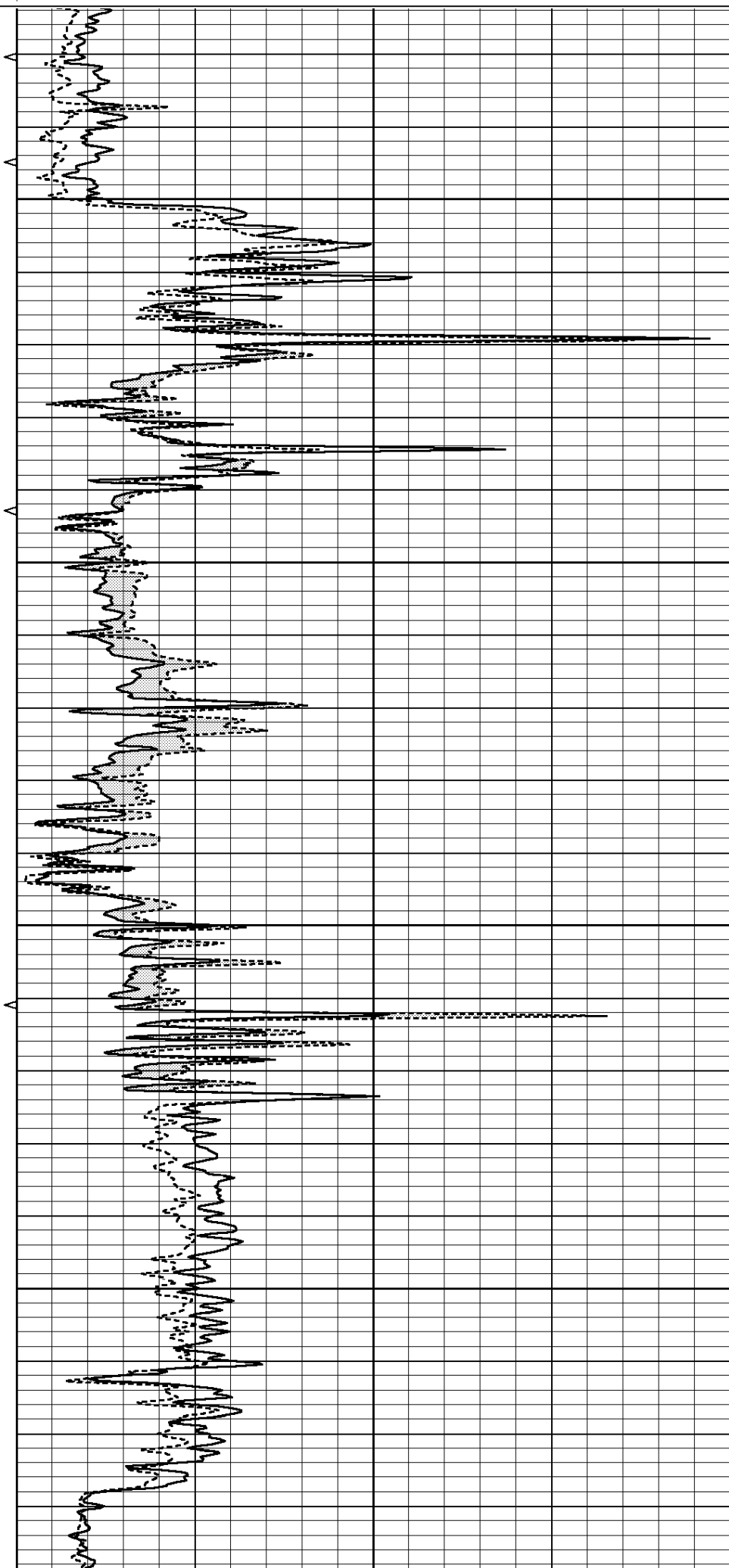


4650

4700

4750

4800



0	GAMMA RAY (GAPI)	150	ABHV	0	MEL1.5 (Ohm-m)	40
6	CALIPER (in)	16	10 (ft3)	0	MEL2.0 (Ohm-m)	40
0	MINMK	20	TBHV			
			0 (ft3)	10		

Calibration Report

Database File: 006289ddn.db
Dataset Pathname: pass5
Dataset Creation: Wed Feb 16 19:12:07 2011 by Log Open-Cased 090629

MICRO Calibration Report

Serial Number: 2
Tool Model: PROBE
Performed: Sun Feb 13 03:02:20 2011

Caliper Calibration: Gain=5.121 Offset=2.123

	Low Cal	High Cal
References	5.800	14.000
Readings	0.757	2.358

1.5" Calibration: Gain=36.000 Offset=-1.000

	Low Cal	High Cal
References	0.000	20.000
Readings	0.065	1.210

2" Calibration: Gain=50.000 Offset=0.000

	Low Cal	High Cal
References	0.000	20.000
Readings	0.012	1.043

Gamma Ray Calibration Report

Serial Number: GR3
Tool Model: OPEN
Performed: Tue Feb 15 22:43:17 2011

Calibrator Value: 200.0 GAPI

Background Reading: 3.0 cps
Calibrator Reading: 186.0 cps

Sensitivity: 0.6500 GAPI/cps