



SUPERIOR
Hays,
Kansas

**COMPENSATED
DENSITY / NEUTRON
LOG**

Company VAL ENERGY, INC.
Well CAROL MEYER #1-24
Field
County BARBER
State KANSAS

Company VAL ENERGY, INC.
Well CAROL MEYER #1-24
Field
County BARBER State KANSAS

Location: API # : 15-007-23647-0000
410' FNL & 2105' FEL
SE - NW - NW - NE
SEC 24 TWP 34S RGE 11W
Permanent Datum GROUND LEVEL Elevation 1346
Log Measured From KELLY BUSHING 11' A.G.L.
Drilling Measured From KELLYB BUSHING
Other Services DIL/MEL
Elevation
K.B. 1357
D.F. 1355
G.L. 1346

Date	2/16/11		
Run Number	ONE		
Depth Driller	4835		
Depth Logger	4830		
Bottom Logged Interval	4806		
Top Log Interval	2750		
Casing Driller	8 5/8" @ 219'		
Casing Logger	220'		
Bit Size	7 7/8"		
Type Fluid in Hole	CHEMICAL MUD	CHLORIDES 10,000 PPM	
Density / Viscosity	9.7/59		
pH / Fluid Loss	8.5/16.8		
Source of Sample	FLOWLINE		
Rin @ Meas. Temp	0.45 @ 90F		
Rmf @ Meas. Temp	0.34 @ 90F		
Rmc @ Meas. Temp	0.54 @ 90F		
Source of Rmf / Rmc	MEASUREMENT		
Rin @ BHT	0.33 @ 123F		
Time Circulation Stopped	2 HOURS		
Time Logger on Bottom			
Maximum Recorded Temperature	123F		
Equipment Number	0836		
Location	HAYS, KANSAS		
Recorded By	JEFF GRONEMEG		
Witnessed By	STEVE VANBUSKIRK		

<<< Fold Here >>>

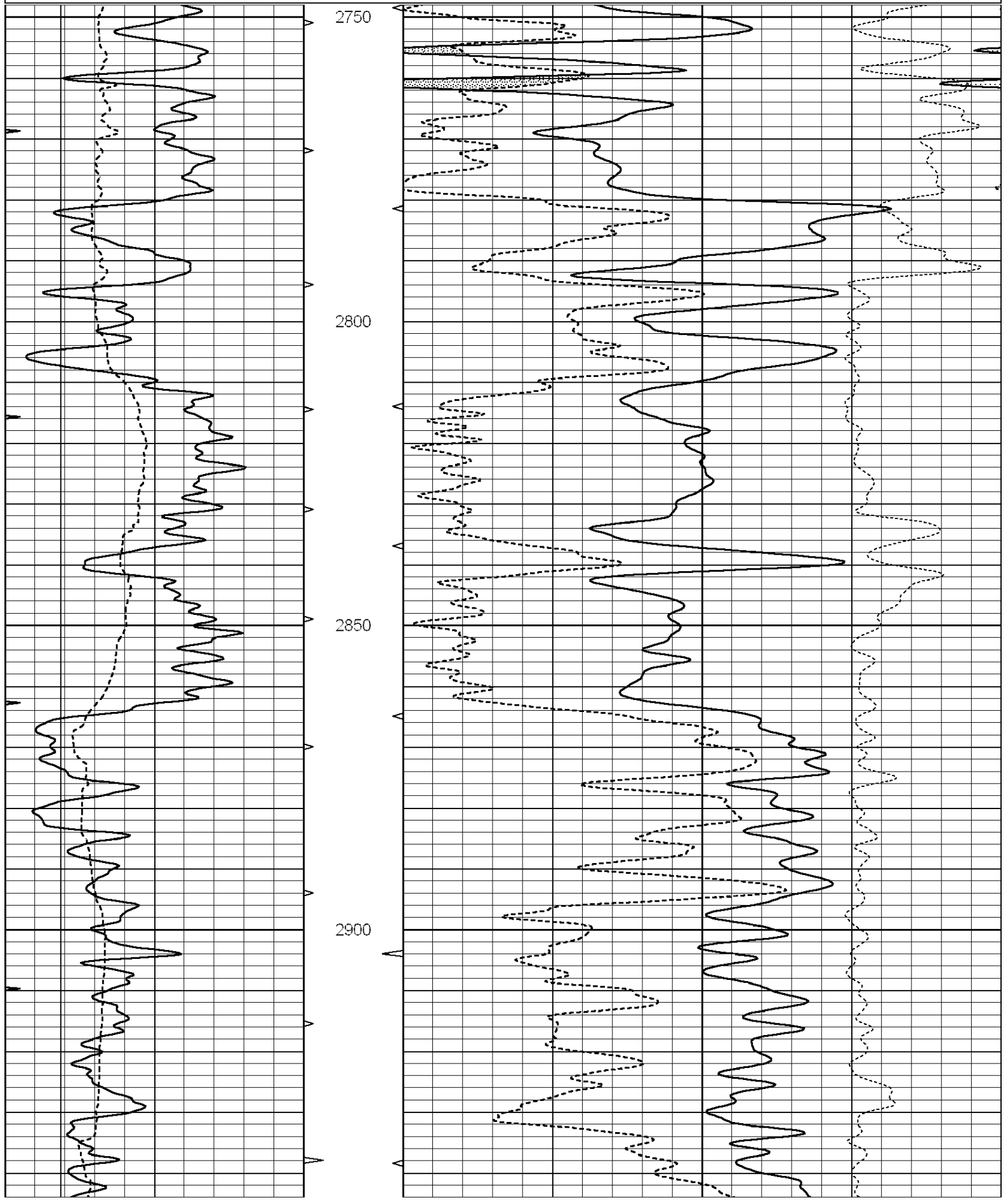
All interpretations are opinions based on inferences from electrical or other measurements and we cannot and do not guarantee the accuracy or correctness of any interpretation, and we shall not, except in the case of gross or willful negligence on our part, be liable or responsible for any loss, costs, damages, or expenses incurred or sustained by anyone resulting from any interpretation made by any of our officers, agents or employees. These interpretations are also subject to our general terms and conditions set out in our current Price Schedule.

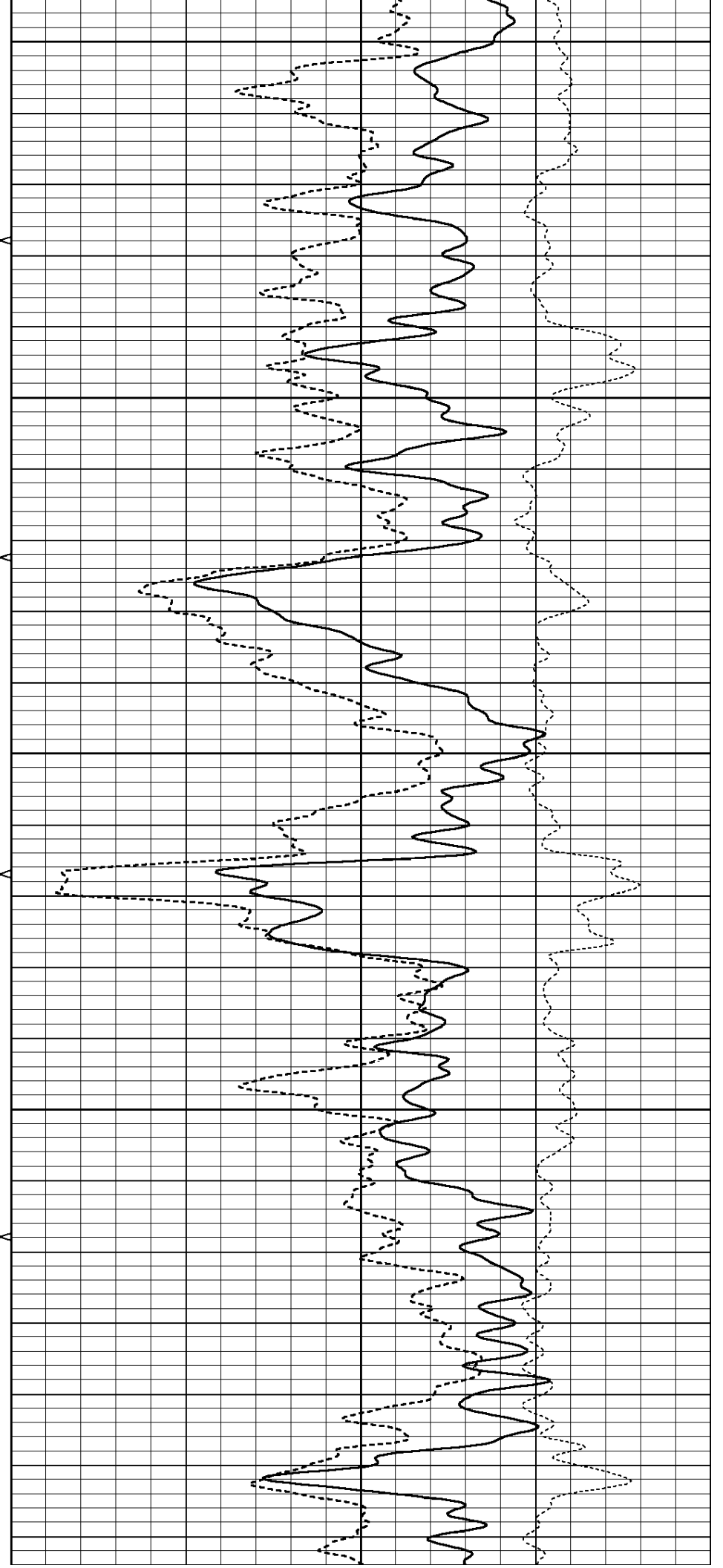
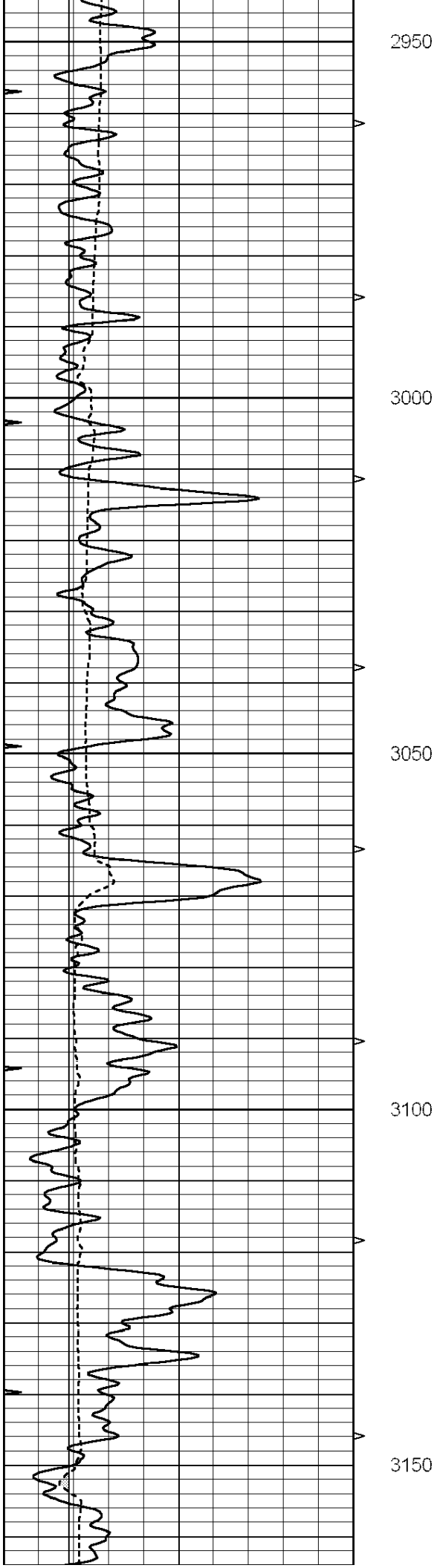
Comments

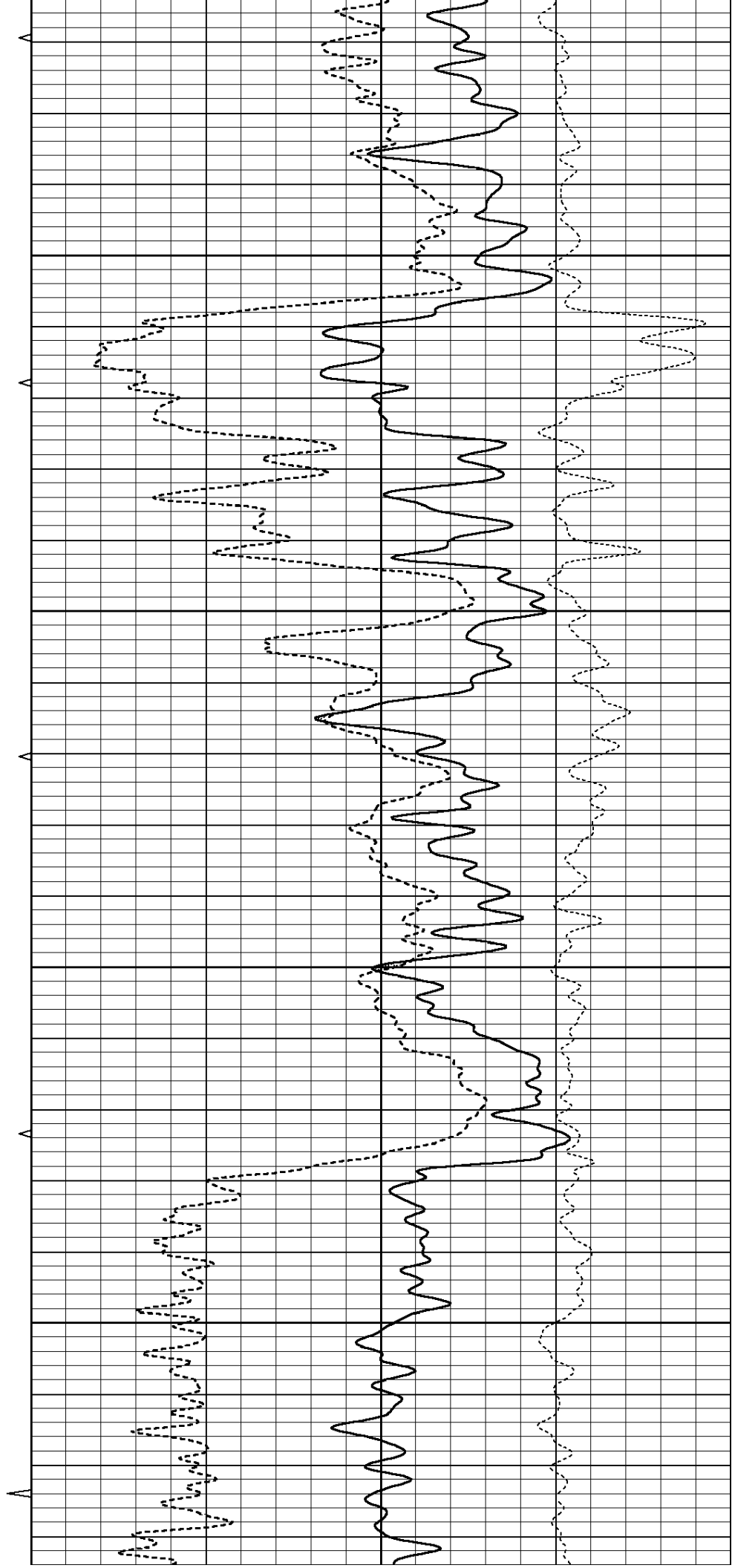
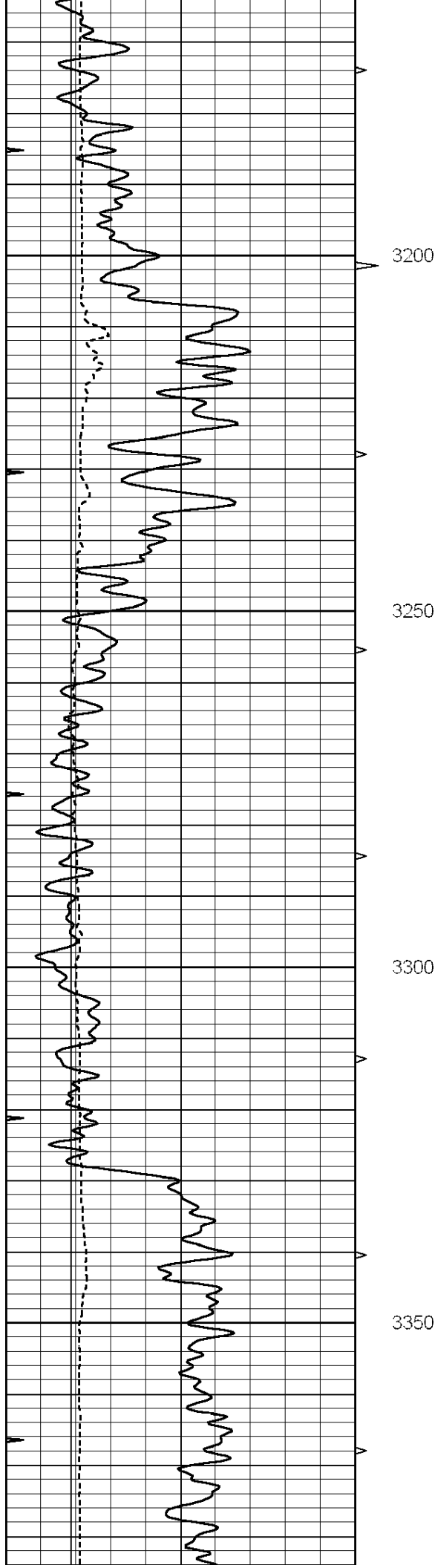
THANK YOU FOR USING SUPERIOR WELL SERVICE HAYS, KANSAS (785) 628-6395
DIRECTIONS
MEDICINE LODGE, KS - SOUTH TO GERLANE BLKTOP - 7 MILES EAST & SOUTH TO BETHEL RD
3 MILES SOUTH TO HARGIS RD - 1/2 MILE EAST - SOUTH INTO ON EAST SIDE OF FARM HOUSE

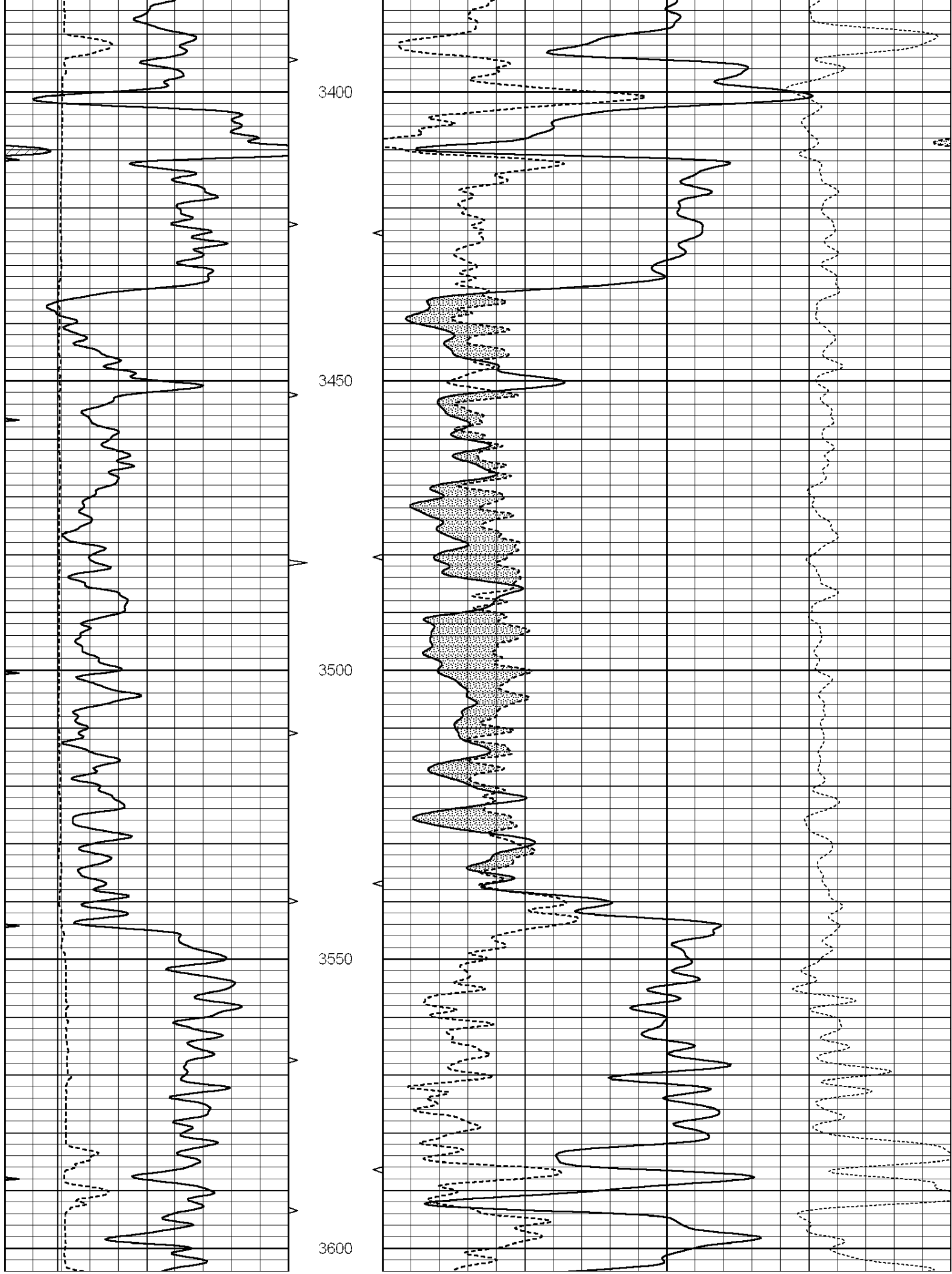
Database File: 006289ddn.db
Dataset Pathname: pass3.3
Presentation Format: den_neu
Dataset Creation: Wed Feb 16 17:45:20 2011 by Calc Open-Cased 090629
Charted by: Depth in Feet scaled 1:240

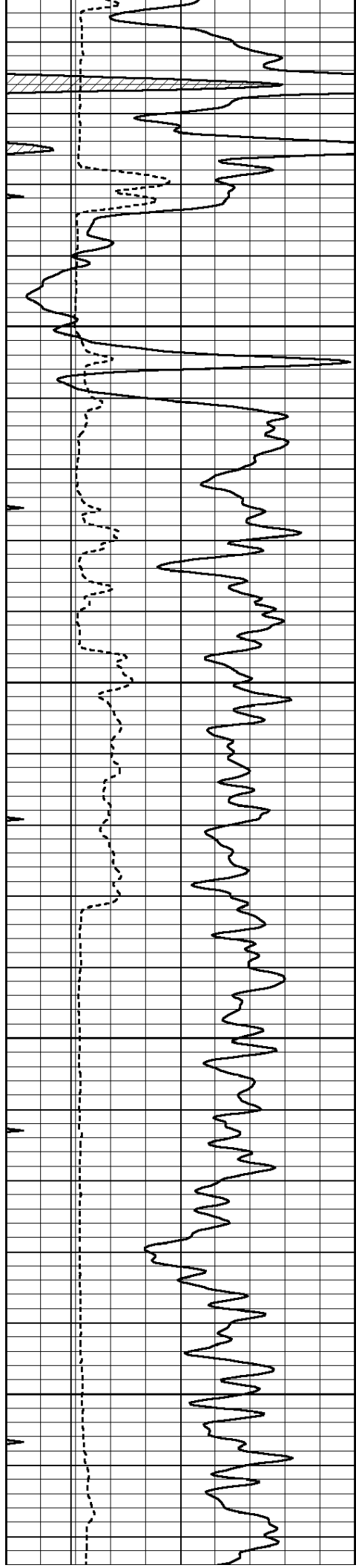
0	GAMMA RAY (GAPI)	150	ABHV	30	COMPENSATED DENSITY (pu)	-10
6	CALIPER (in)	16	10 (ft3)	0 30	COMPENSATED NEUTRON (pu)	-10
0	MINMK	20	TBHV		-0.25 CORRECTION (g/cc)	0.25
			0 (ft3)	10		









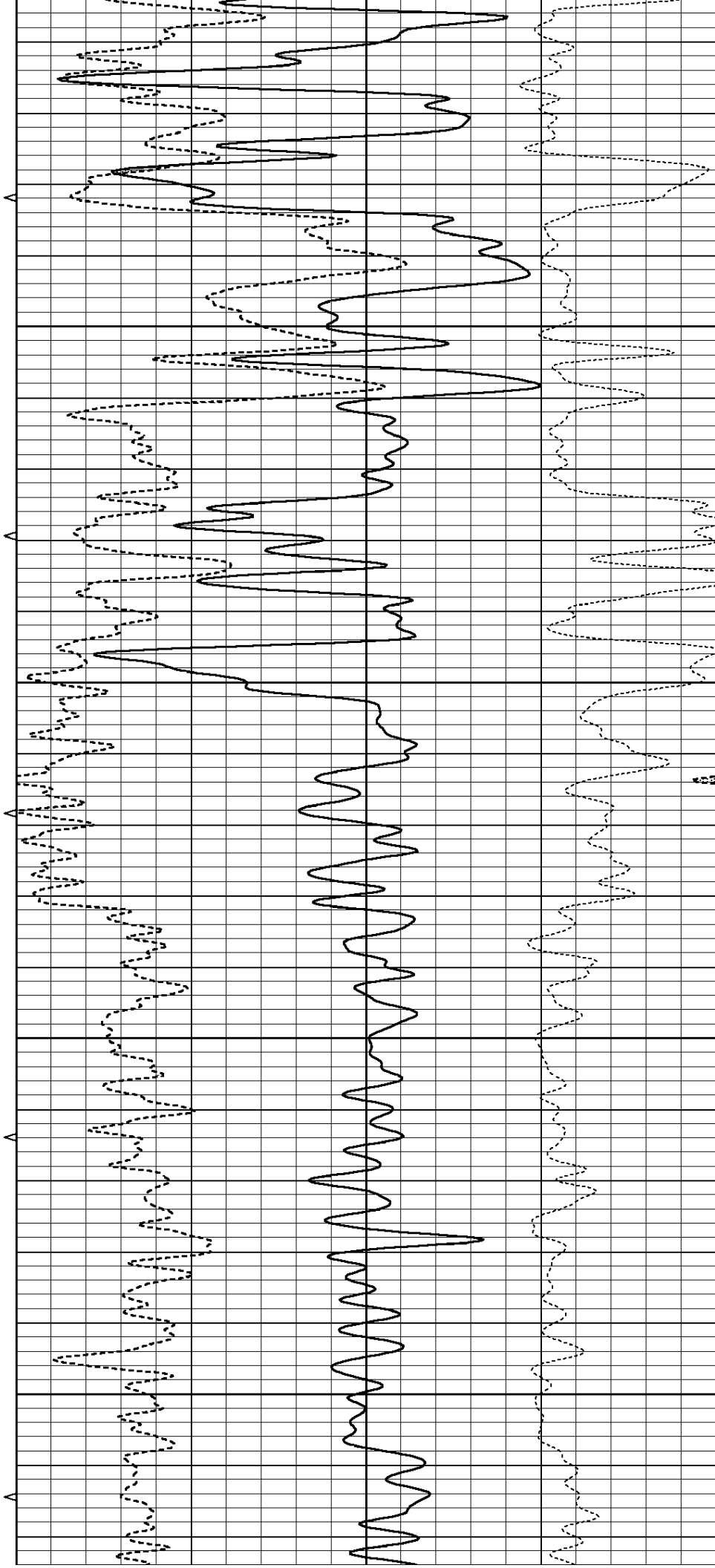


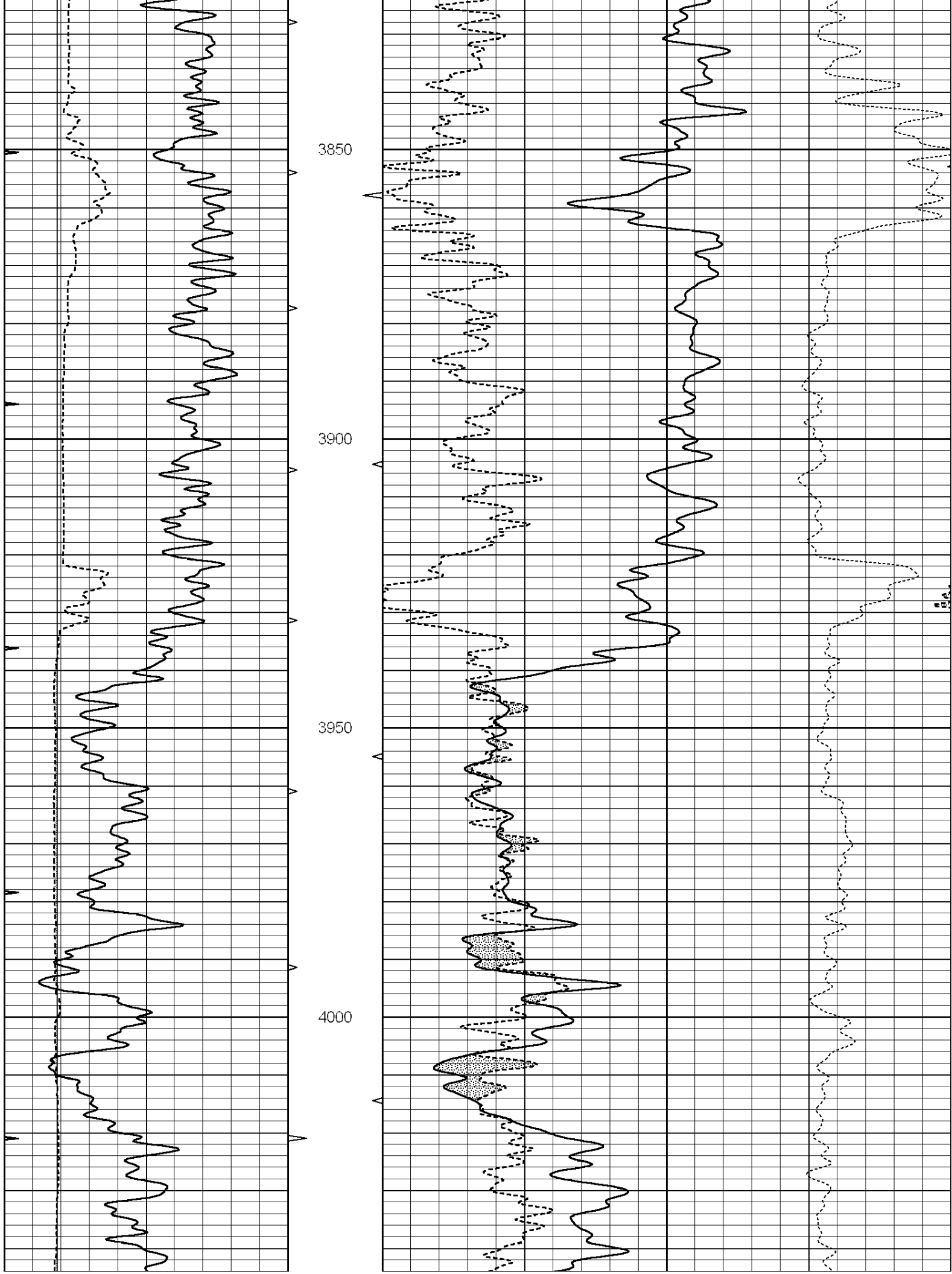
3650

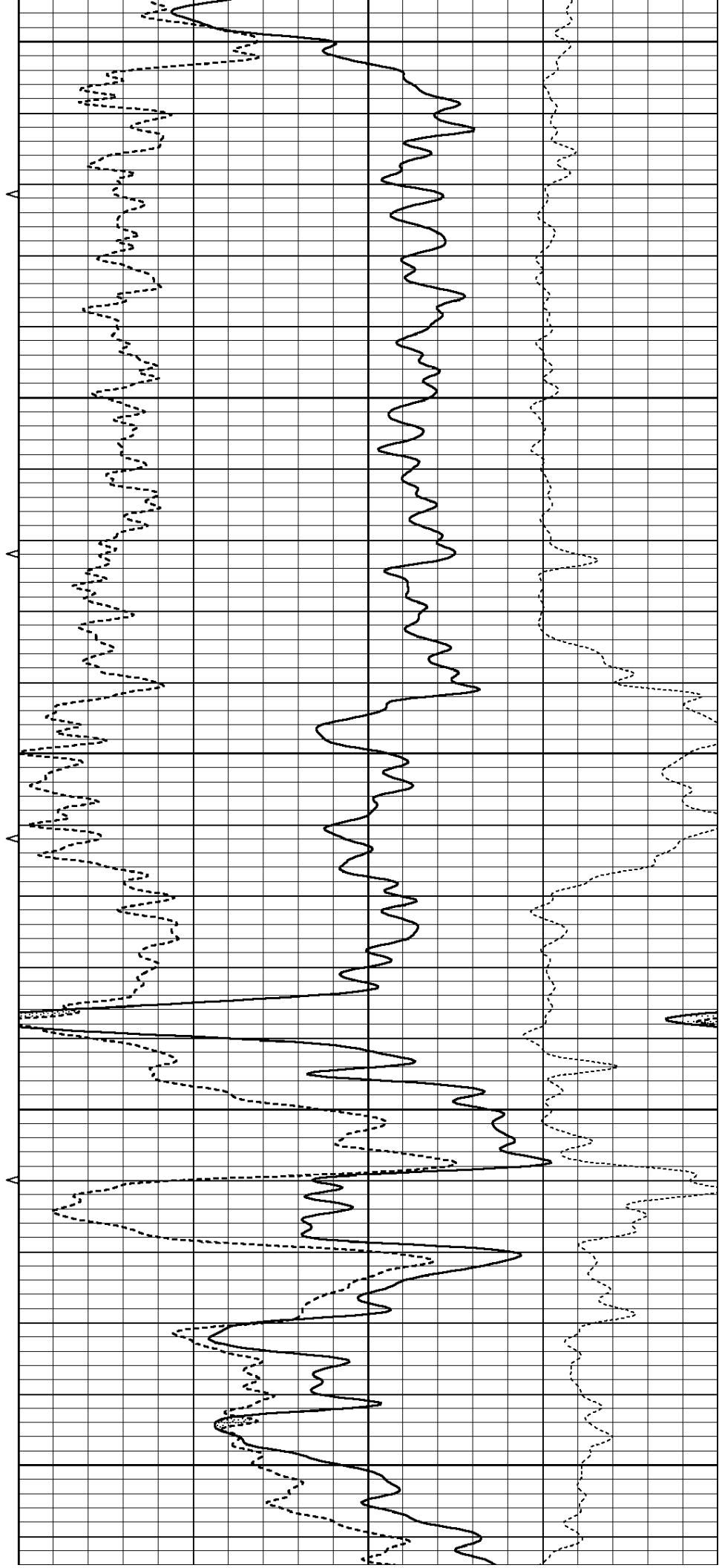
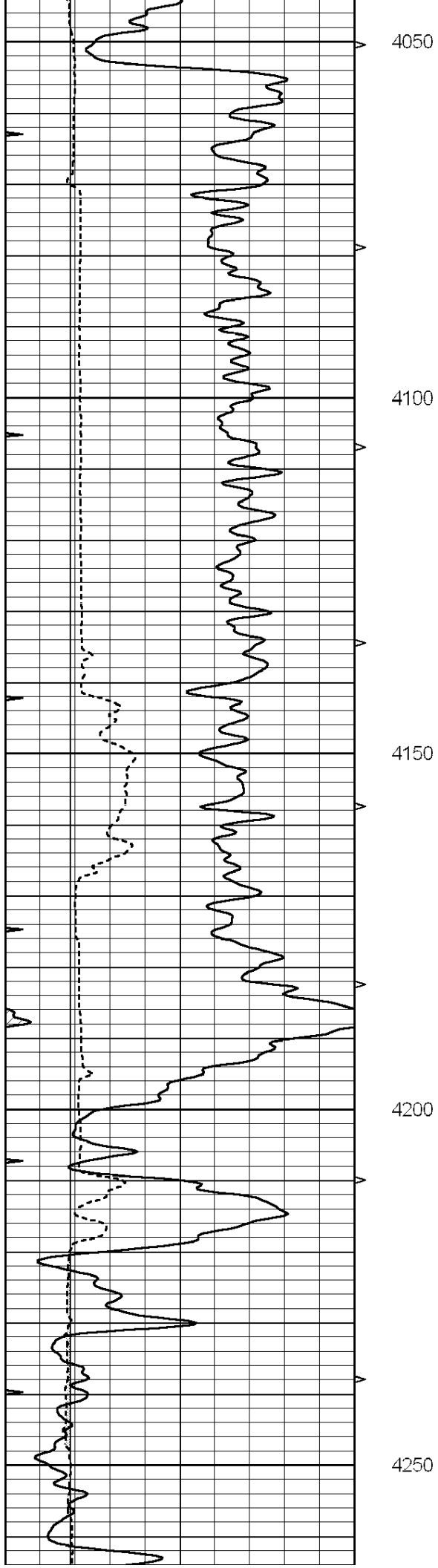
3700

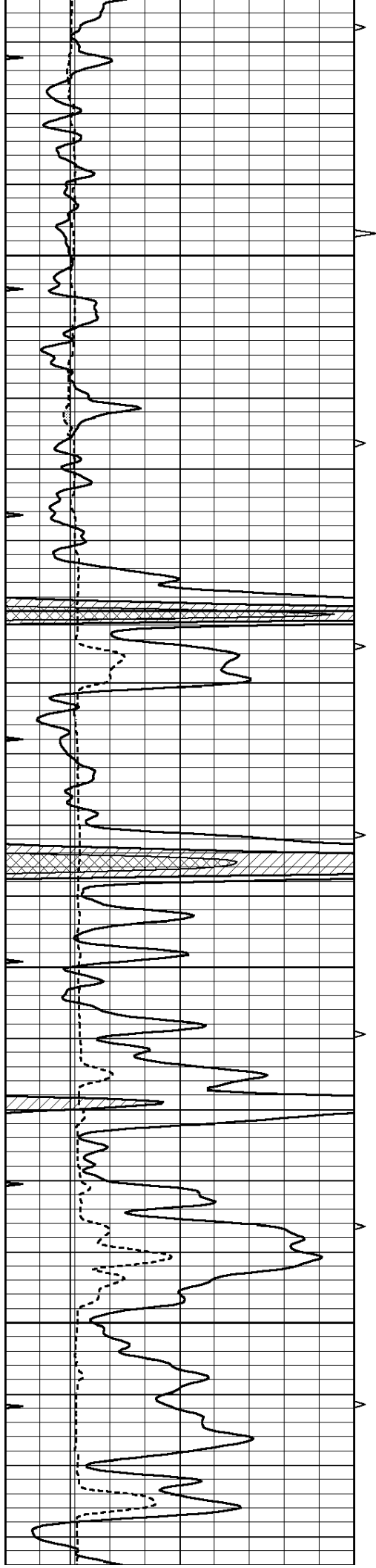
3750

3800







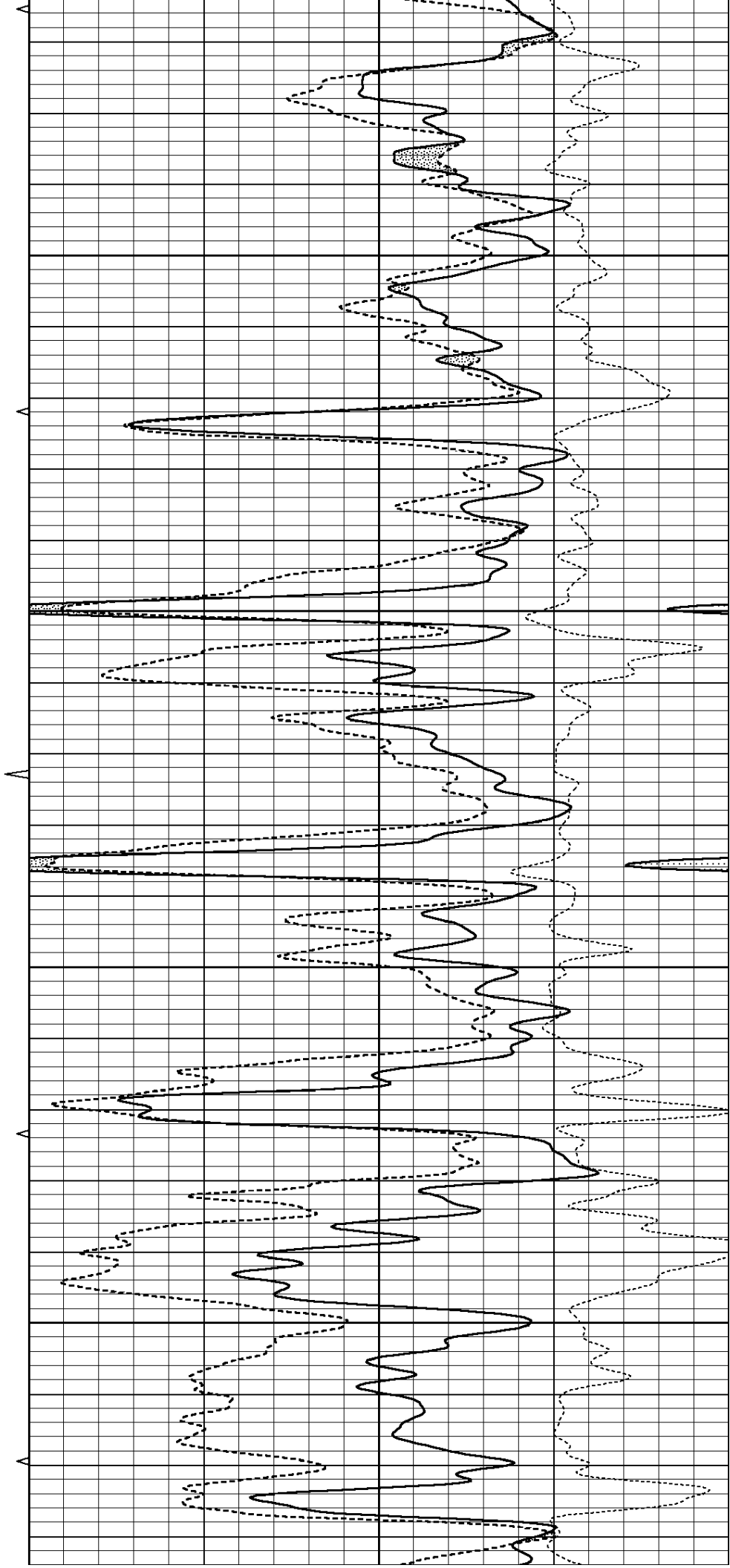


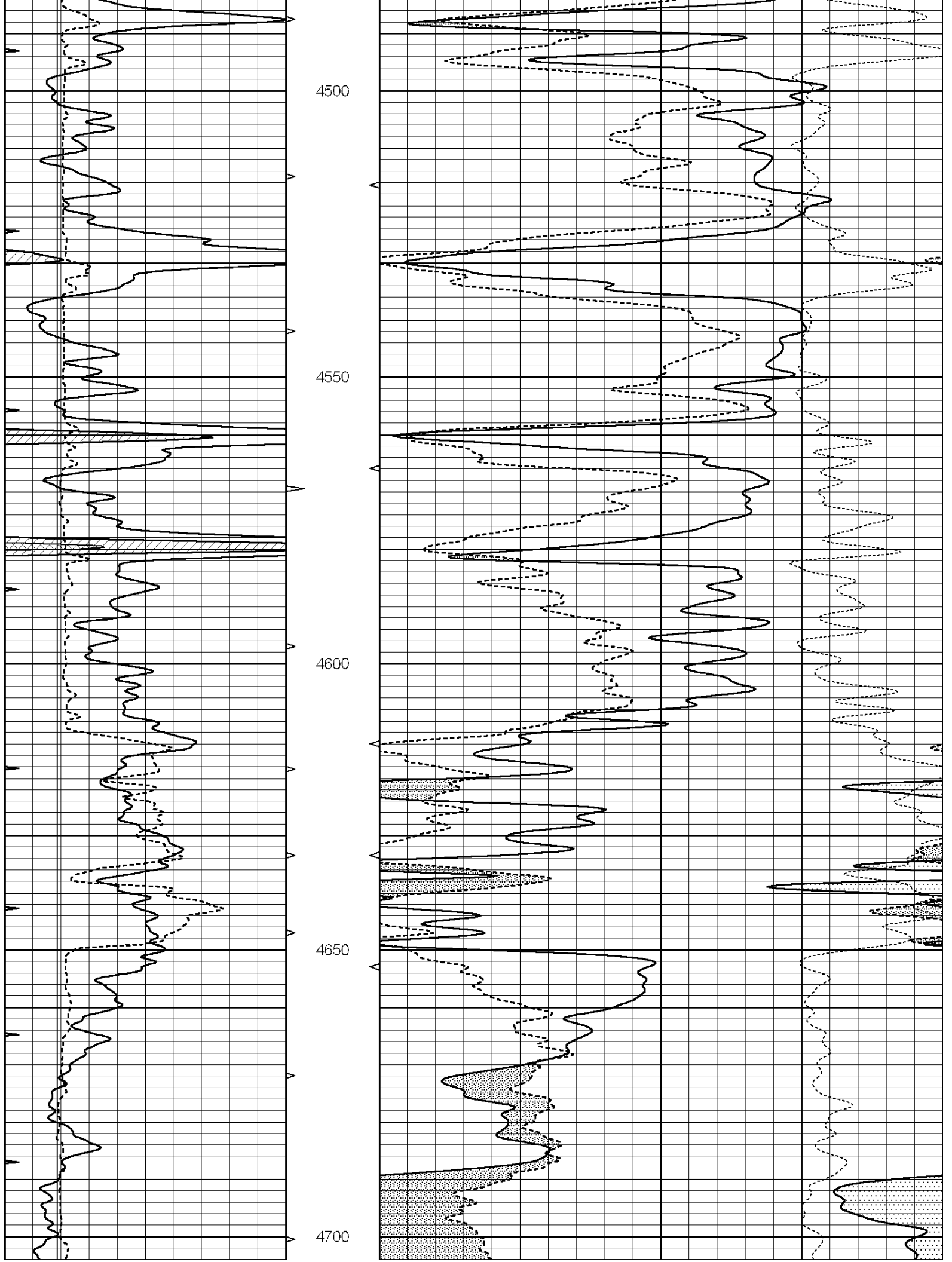
4300

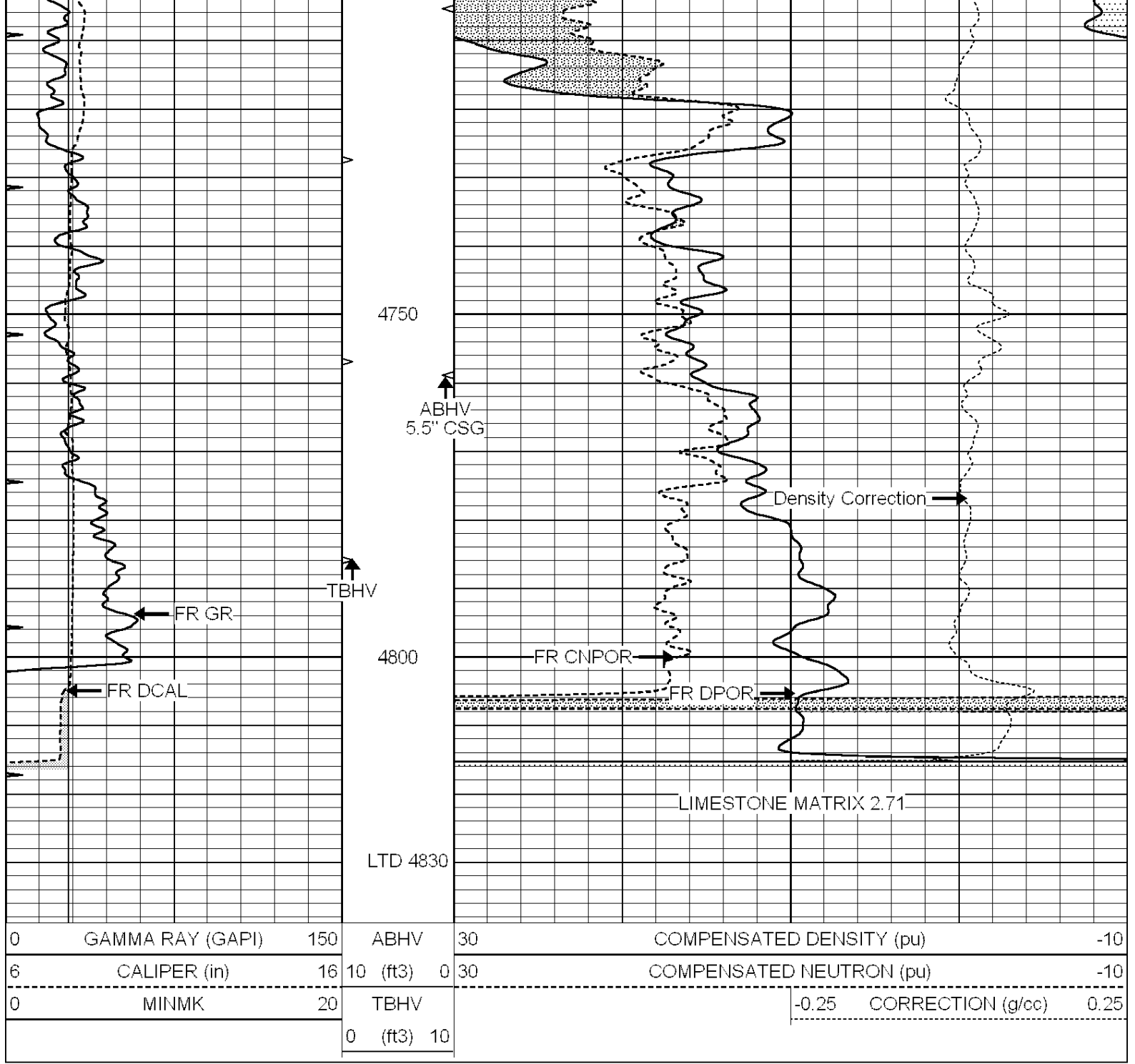
4350

4400

4450





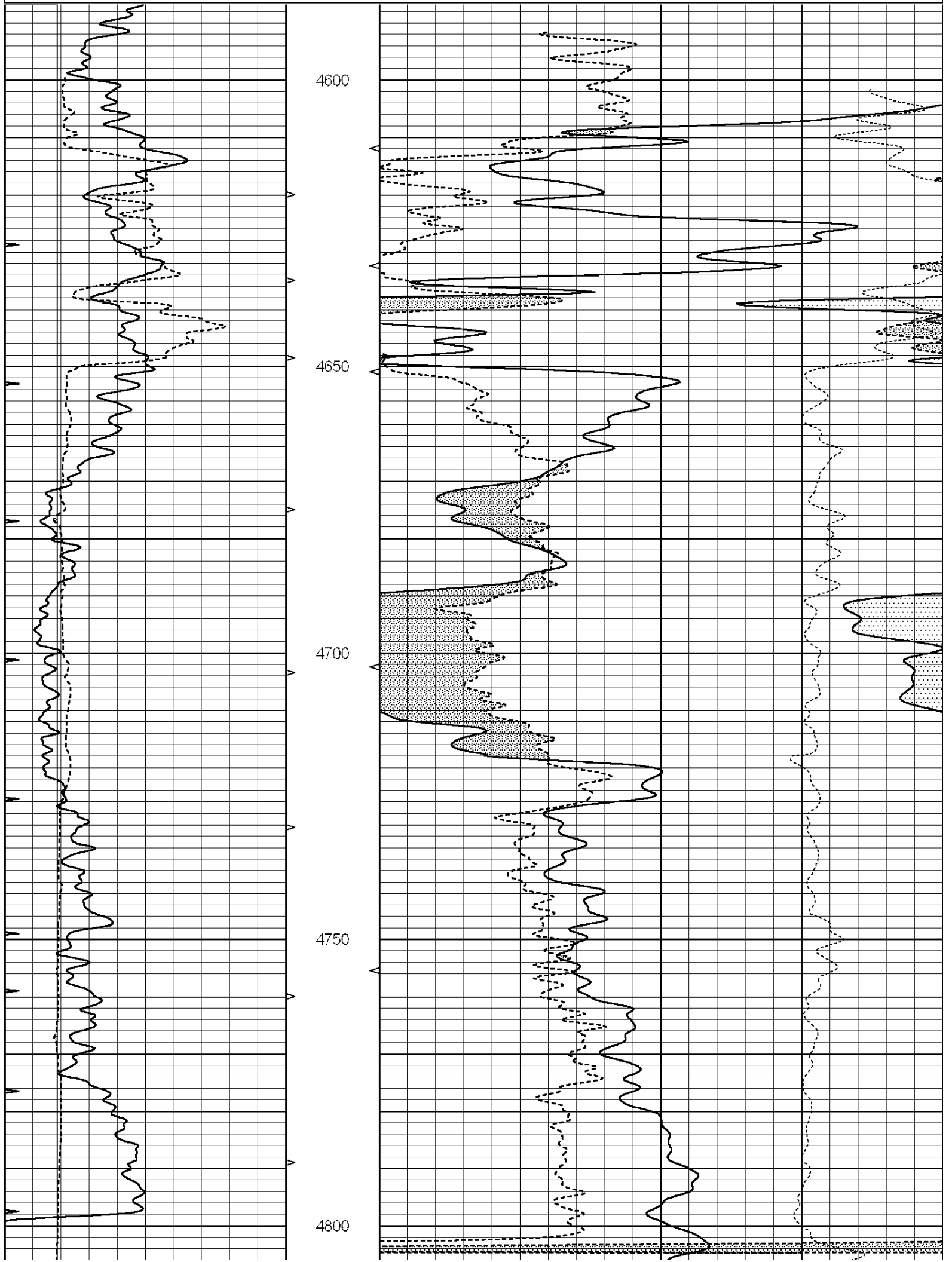


SUPERIOR
Hays,
Kansas

REPEAT SECTION

Database File: 006289ddn.db
 Dataset Pathname: pass2.1
 Presentation Format: den_neu
 Dataset Creation: Wed Feb 16 17:07:37 2011
 Charted by: Depth in Feet scaled 1:240

0	GAMMA RAY (GAPI)	150	ABHV	30	COMPENSATED DENSITY (pu)	-10
6	CALIPER (in)	16	10 (ft3)	0 30	COMPENSATED NEUTRON (pu)	-10
0	MINMK	20	TBHV		-0.25 CORRECTION (g/cc)	0.25
			0 (ft3)	10		



0	GAMMA RAY (GAPI)	150	ABHV	30	COMPENSATED DENSITY (pu)		-10
6	CALIPER (in)	16	10 (ft3)	0 30	COMPENSATED NEUTRON (pu)		-10
0	MINMK	20	TBHV		-0.25	CORRECTION (g/cc)	0.25
			0 (ft3)	10			

Calibration Report

Database File: 006289ddn.db
 Dataset Pathname: pass3.3
 Dataset Creation: Wed Feb 16 17:45:20 2011 by Calc Open-Cased 090629

Dual Induction Calibration Report

Serial-Model: DIL3-GEAR
 Performed: Tue Feb 15 19:33:25 2011

Loop:	Readings				References		Results	
	Air	Loop			Air	Loop	m	b
Deep	0.011	0.656	V	0.000	400.000	mmho/m	640.000	0.000
Medium	0.013	0.740	V	0.000	462.500	mmho/m	700.000	-12.000
Internal:	Zero	Cal		Zero	Cal		m	b
Deep	0.002	0.645	V	0.000	400.000	mmho/m	622.059	-1.071
Medium	0.007	0.740	V	0.000	462.500	mmho/m	631.393	-4.555

Litho Density Calibration Report

Serial: 003N Model: PRB
 Performed Tue Sep 08 14:14:44 2009

Litho Density Calibration

	Background	Magnesium	Aluminum	Sandstone	
Window 1	2042.6	12312.8	4225.8	13758.4	cps
Window 2	1855.8	10134.7	3624.2	11113.1	cps
Window 3	1639.4	6760.2	2716.3	7260.3	cps
Window 4	466.4	469.2	466.1	476.5	cps
Long Space	0.0	8278.9	1768.4	9257.4	cps
Short Space	2.2	2377.3	1544.1	2574.2	cps
Rho		1.7100	2.5900	1.3800	g/cc
Pe			2.5700	1.5500	
Rib Angle	: 44.4	Rib Slope	: 0.979	Density/Spine Ratio	: 0.549
Spine Angle	: 74.4	Spine Slope	: 3.577	Spine Intercept	: -18.8

Caliper

	Readings	Reference	
Low Ref	1.8	6.0	
High Ref	4.6	14.0	
Gain: 2.9			Offset: 1.0

Compensated Neutron Calibration Report

Serial Number: NEU_3I
Tool Model: G

CALIBRATION

Detector	Readings	Target	Normalization
Short Space	997.00 cps	1000.00 cps	1.0000
Long Space	986.00 cps	1000.00 cps	1.0000

Gamma Ray Calibration Report

Serial Number: GR3
Tool Model: OPEN
Performed: Tue Feb 15 22:43:17 2011

Calibrator Value: 200.0 GAPI

Background Reading: 3.0 cps
Calibrator Reading: 186.0 cps

Sensitivity: 0.6500 GAPI/cps