



**SUPERIOR**  
Hays,  
Kansas

**DUAL**  
INDUCTION  
LOG

Company VAL ENERGY, INC.  
Well CAROL MEYER #1-24  
Field  
County BARBER  
State KANSAS

Company VAL ENERGY, INC.  
Well CAROL MEYER #1-24  
Field  
County BARBER State KANSAS

Location: API # : 15-007-23647-0000  
410' FNL & 2105' FEL  
SE - NW - NW - NE  
SEC 24 TWP 34S RGE 11W  
Permanent Datum GROUND LEVEL Elevation 1346  
Log Measured From KELLY BUSHING 11' A.G.L.  
Drilling Measured From KELLYB BUSHING  
Other Services  
CDL/CNL  
MEL  
Elevation  
K.B. 1357  
D.F. 1355  
G.L. 1346

Date	2/16/11		
Run Number	ONE		
Depth Driller	4835		
Depth Logger	4830		
Bottom Logged Interval	4828		
Top Log Interval	0		
Casing Driller	8 5/8"@219'		
Casing Logger	220'		
Bit Size	7 7/8"		
Type Fluid in Hole	CHEMICAL MUD	CHLORIDES 10,000 PPM	
Density / Viscosity	9.7/59		
pH / Fluid Loss	8.5/16.8		
Source of Sample	FLOWLINE		
Rin @ Meas. Temp	0.45 @ 90F		
Rmf @ Meas. Temp	0.34 @ 90F		
Rmc @ Meas. Temp	0.54 @ 90F		
Source of Rmf / Rmc	MEASUREMENT		
Rin @ BHT	0.33 @ 123F		
Time Circulation Stopped	2 HOURS		
Time Logger on Bottom			
Maximum Recorded Temperature	123F		
Equipment Number	0836		
Location	HAYS, KANSAS		
Recorded By	JEFF GRONEMEG		
Witnessed By	STEVE VANBUSKIRK		

<<< Fold Here >>>

All interpretations are opinions based on inferences from electrical or other measurements and we cannot and do not guarantee the accuracy or correctness of any interpretation, and we shall not, except in the case of gross or willful negligence on our part, be liable or responsible for any loss, costs, damages, or expenses incurred or sustained by anyone resulting from any interpretation made by any of our officers, agents or employees. These interpretations are also subject to our general terms and conditions set out in our current Price Schedule.

**Comments**

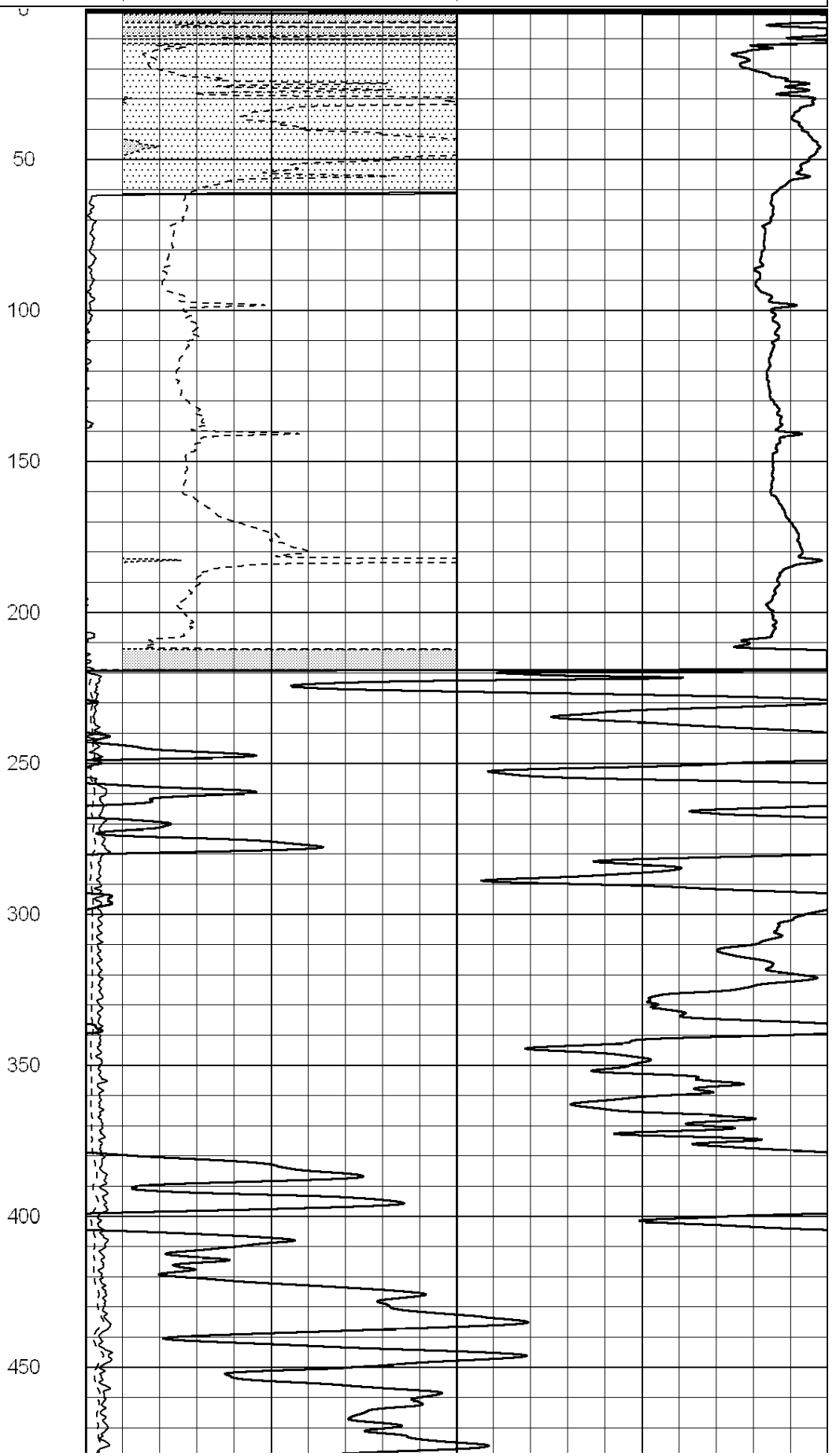
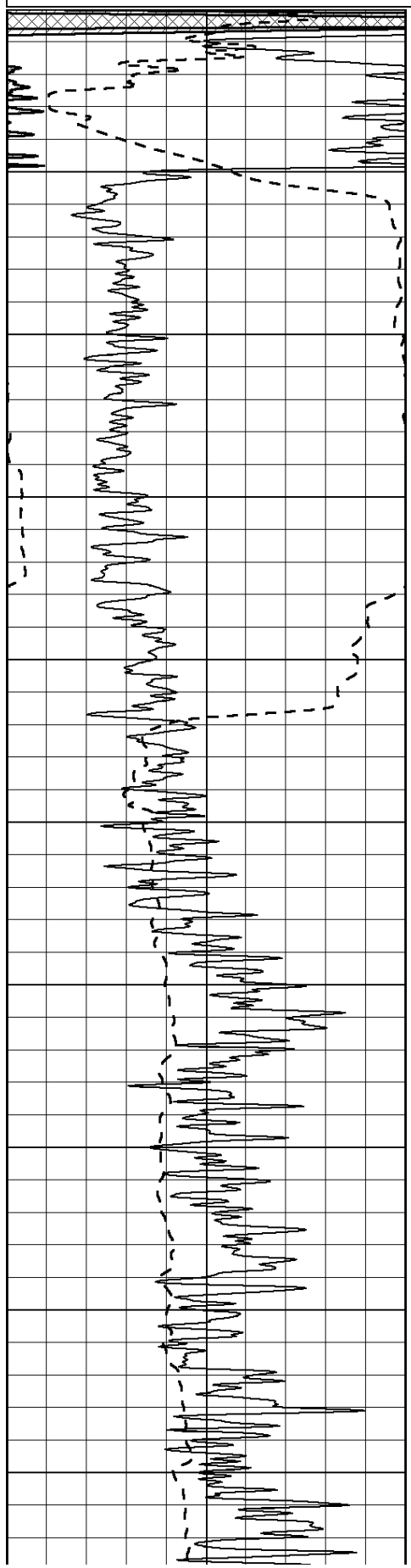
THANK YOU FOR USING SUPERIOR WELL SERVICE HAYS, KANSAS (785) 628-6395  
DIRECTIONS  
MEDICINE LODGE, KS - SOUTH TO GERLANE BLKTOP - 7 MILES EAST & SOUTH TO BETHEL RD  
3 MILES SOUTH TO HARGIS RD - 1/2 MILE EAST - SOUTH INTO ON EAST SIDE OF FARM HOUSE

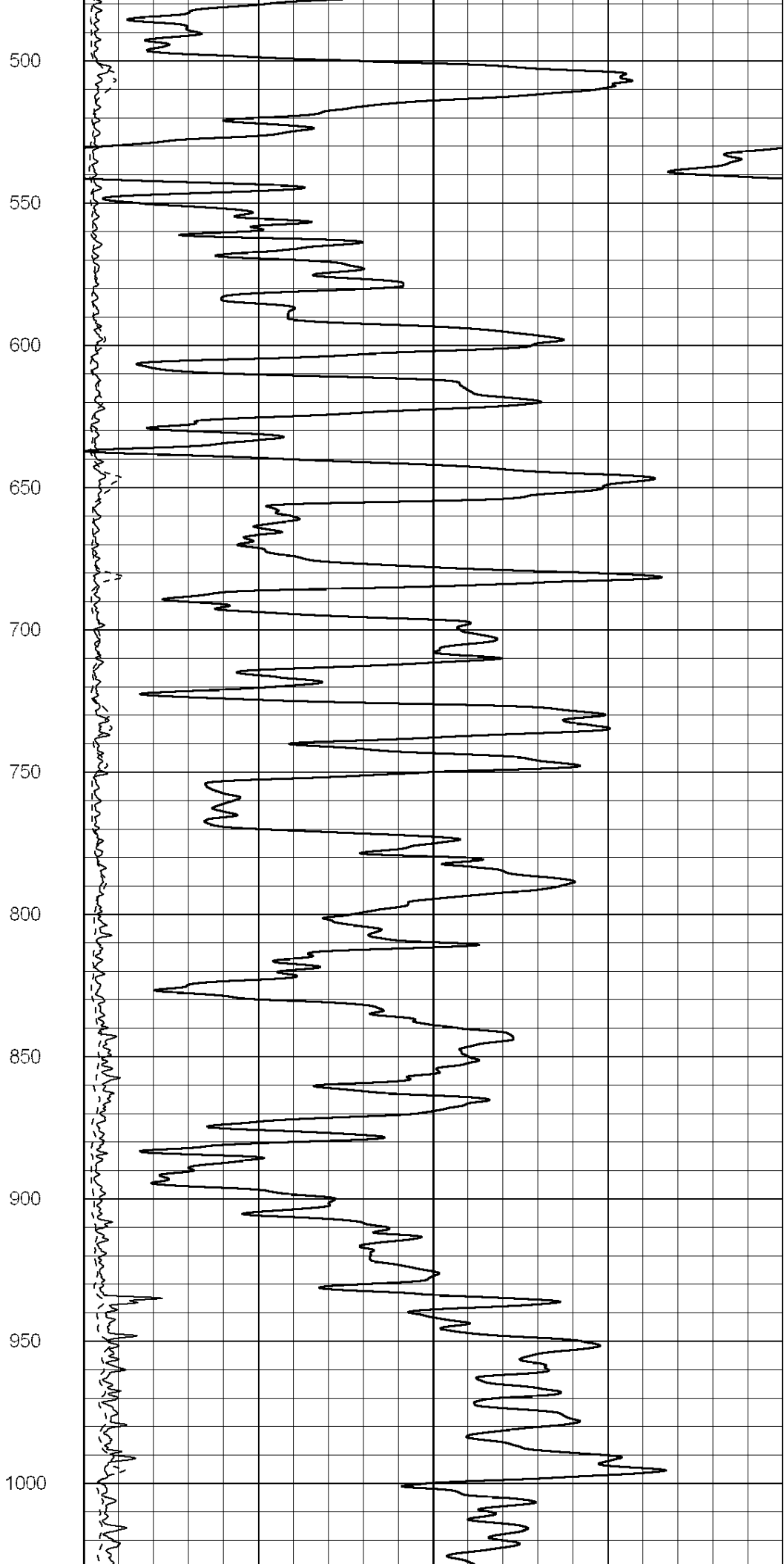
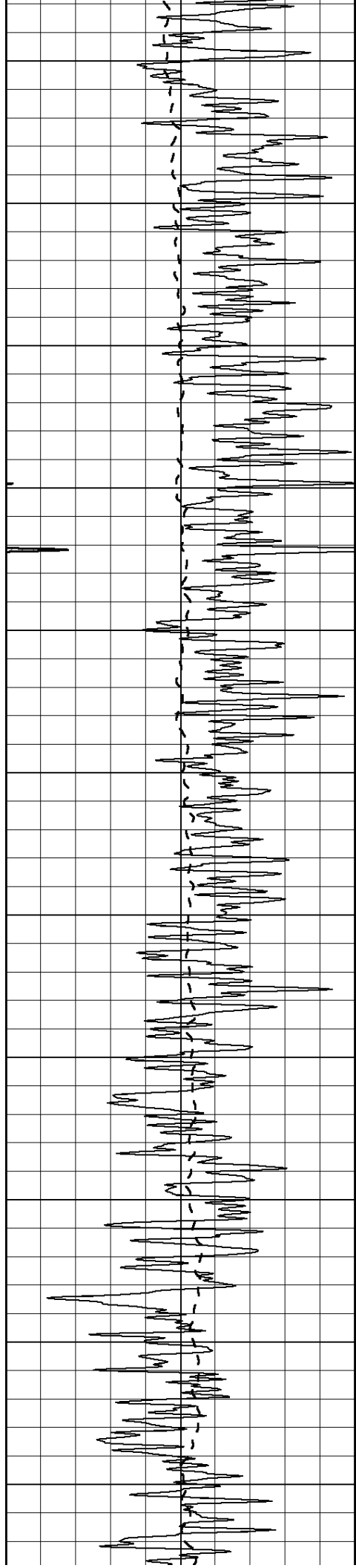
0	Gamma Ray (GAPI)	150
-100	SP (mV)	100

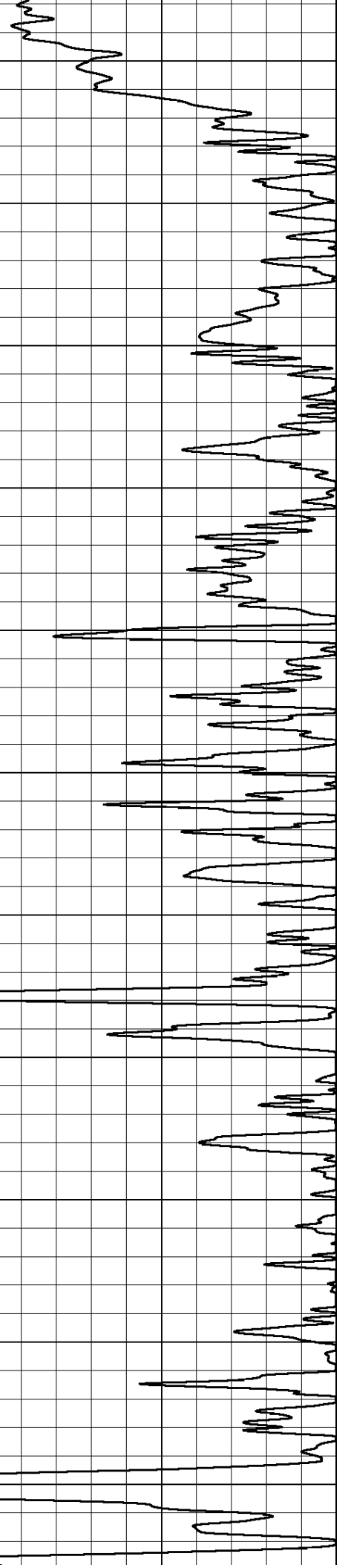
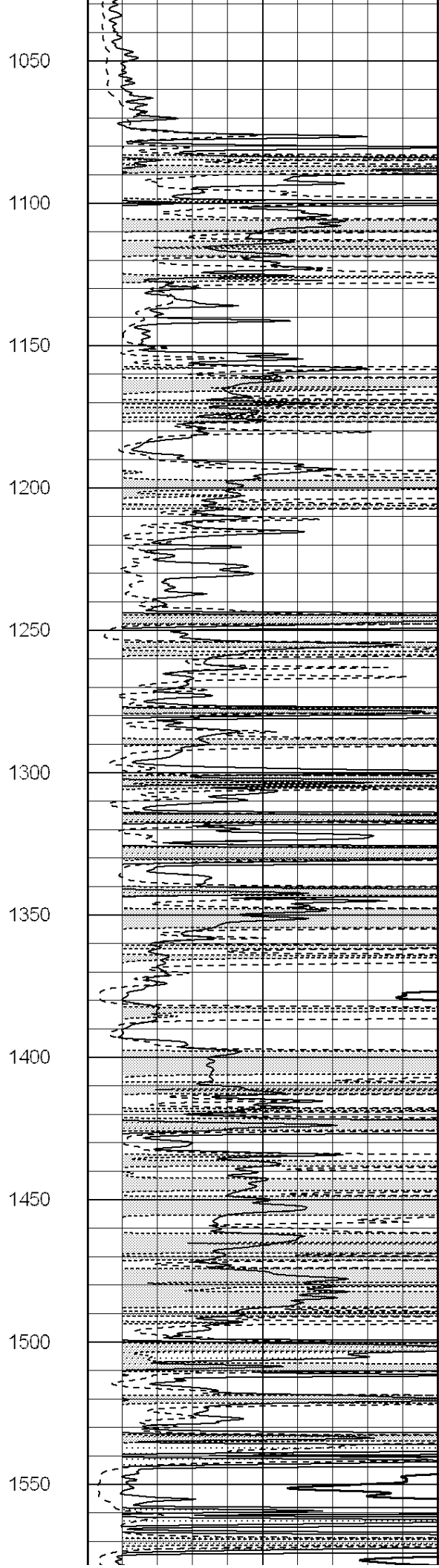
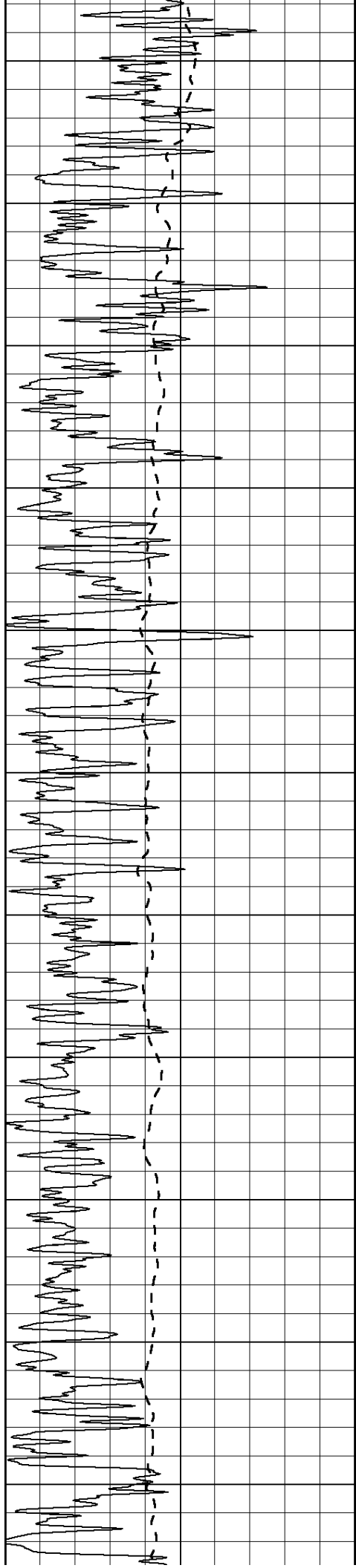
0	RLL3 (Ohm-m)	50
0	RILD (Ohm-m)	50

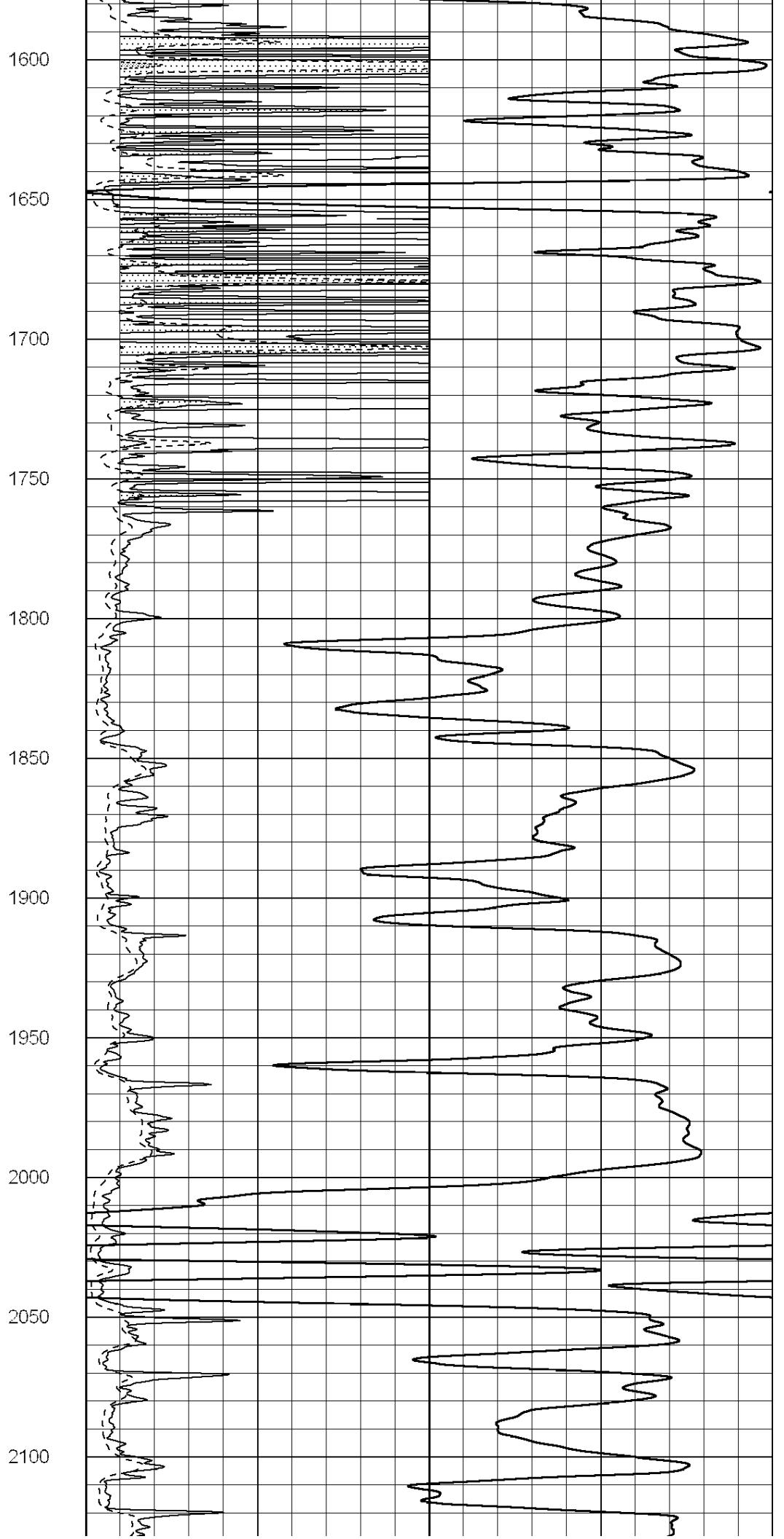
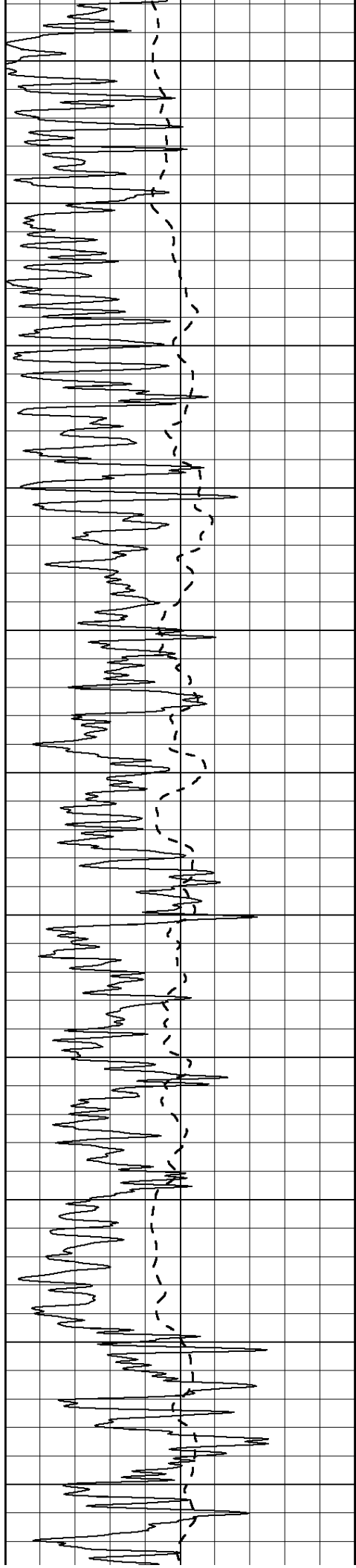
1000	CILD (mmho/m)	0
------	---------------	---

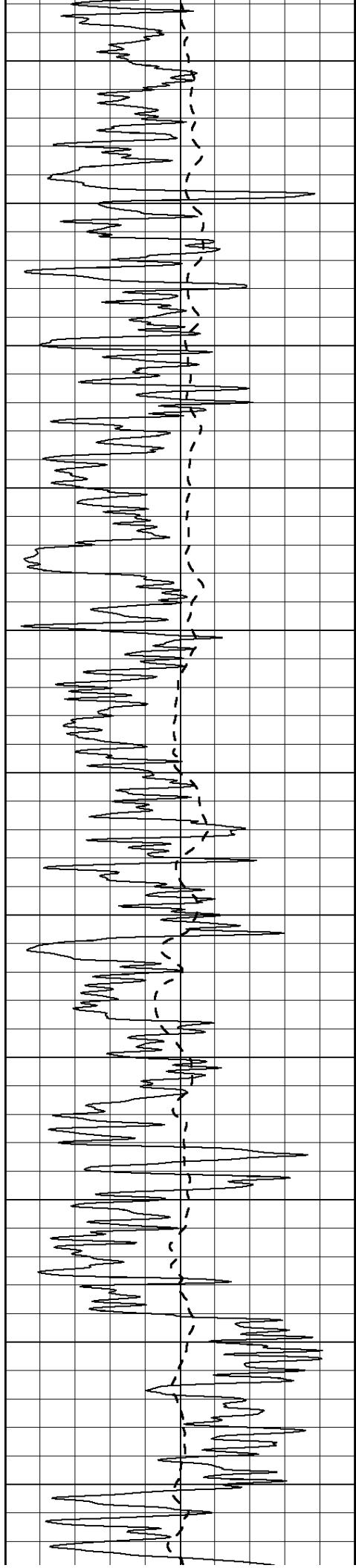
50	RILD X10 (Ohm-m)	500
50	RLL3 X10 (Ohm-m)	500











2150

2200

2250

2300

2350

2400

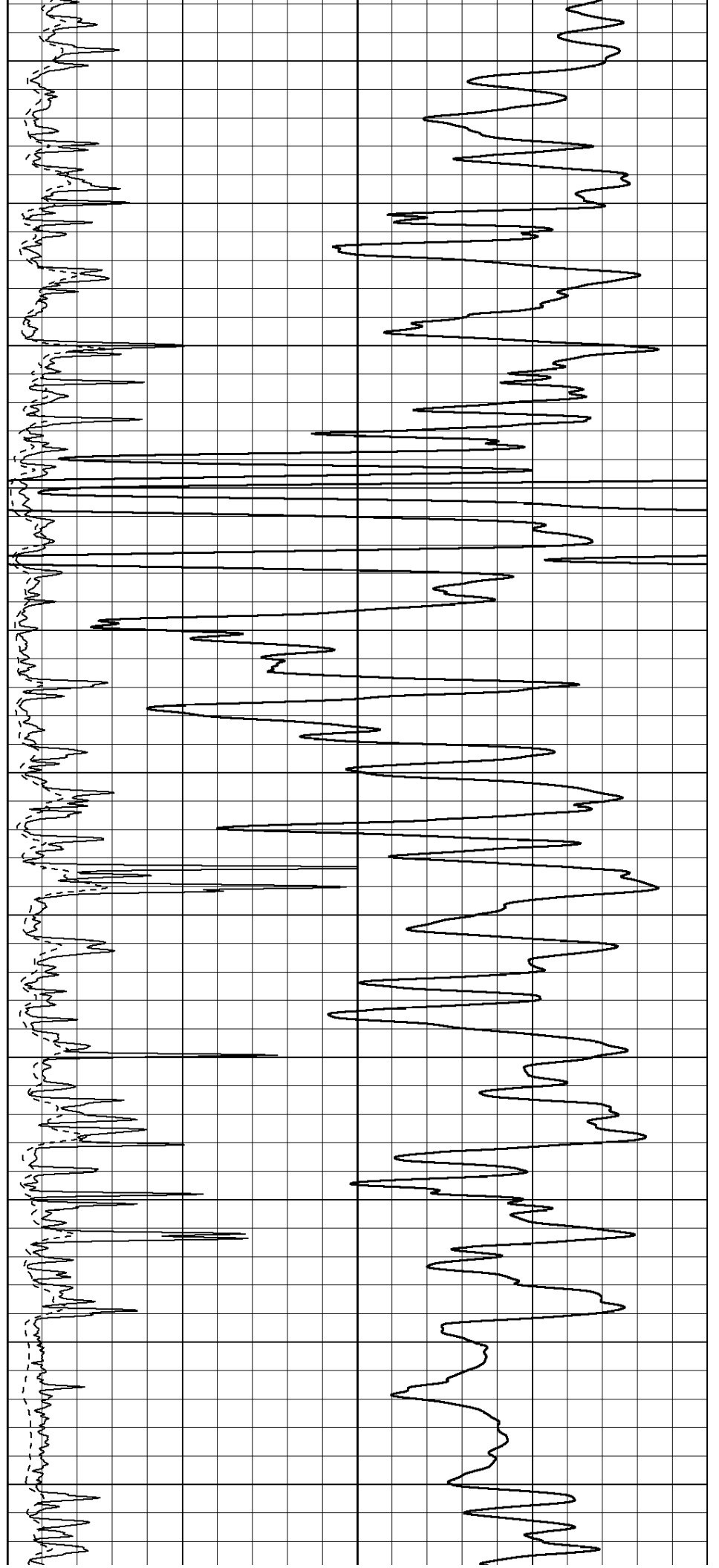
2450

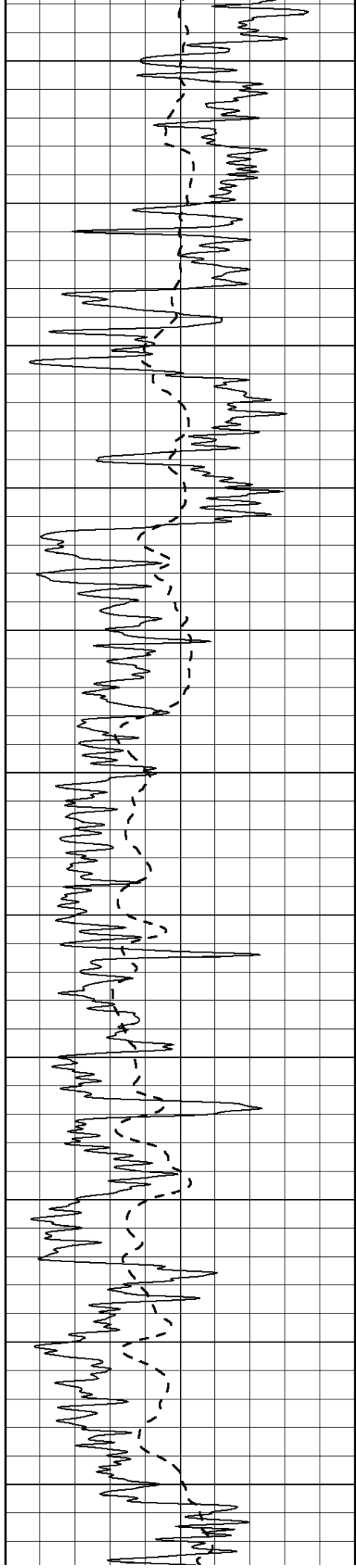
2500

2550

2600

2650





2700

2750

2800

2850

2900

2950

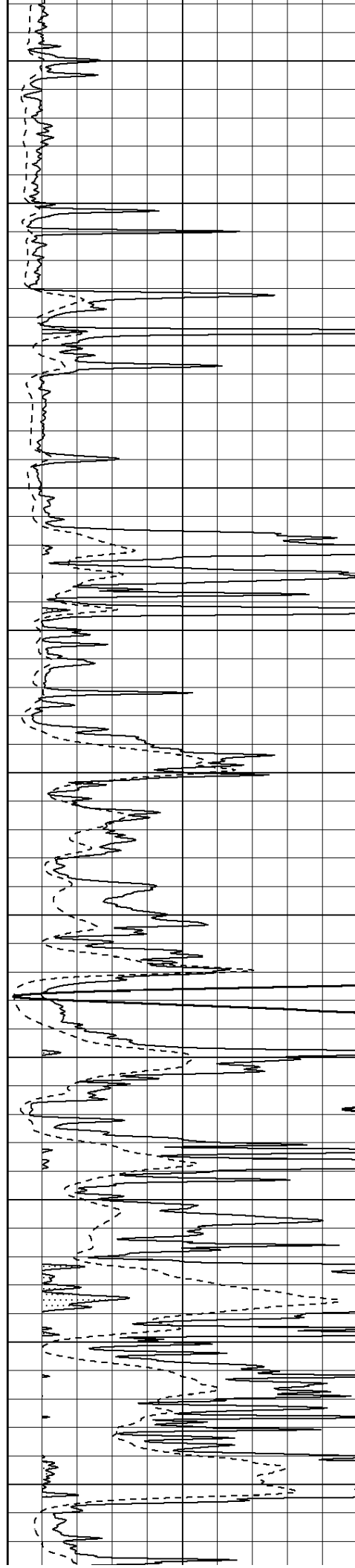
3000

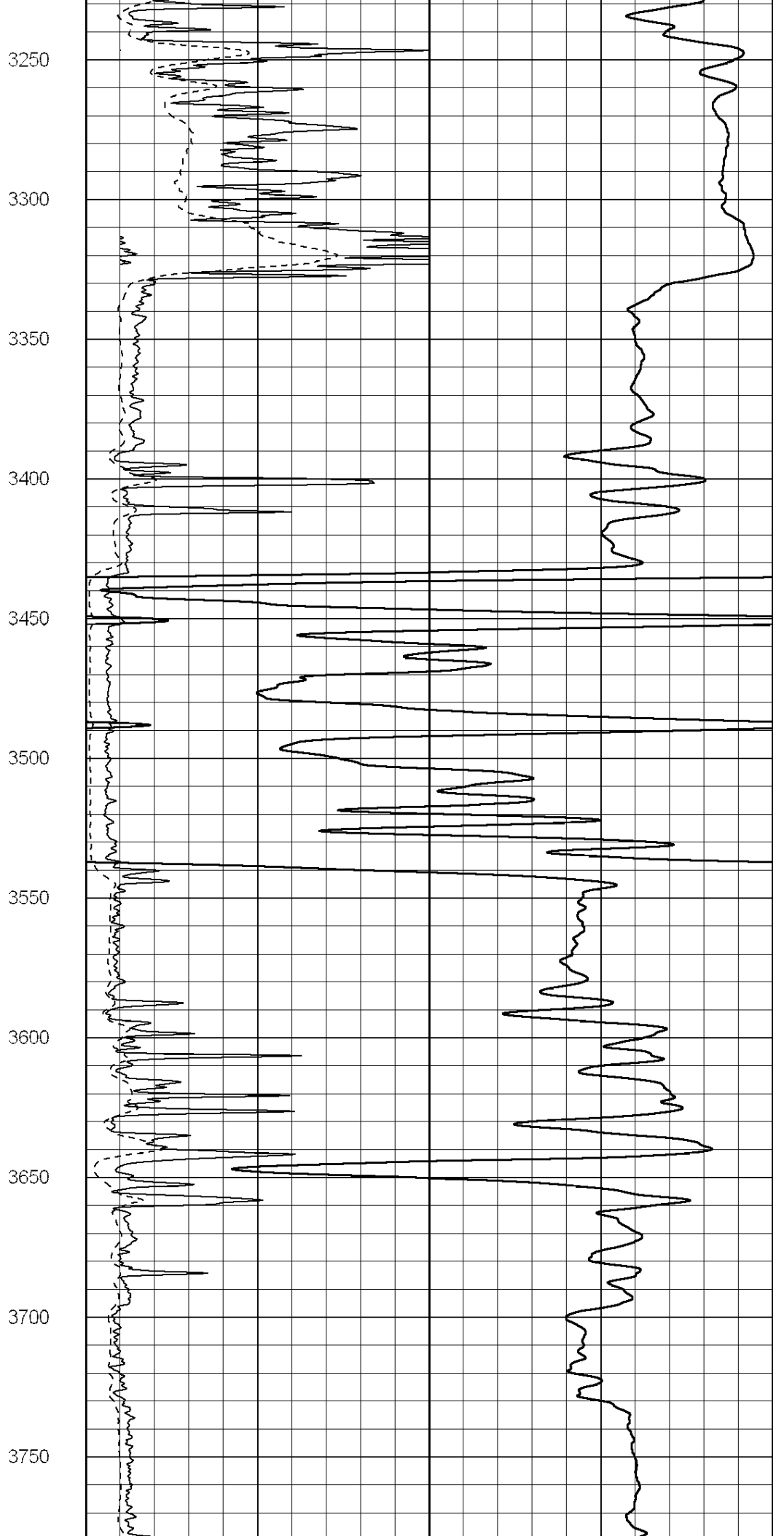
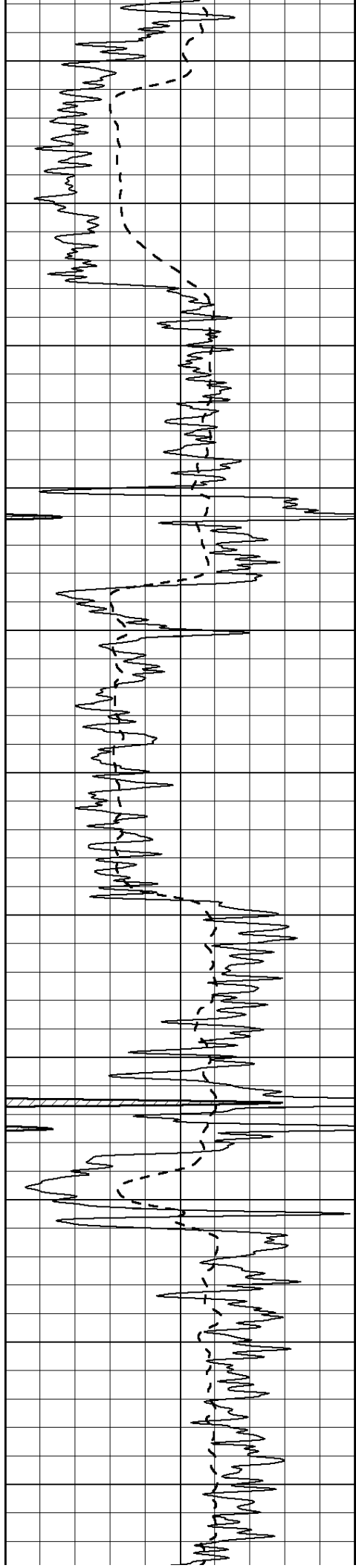
3050

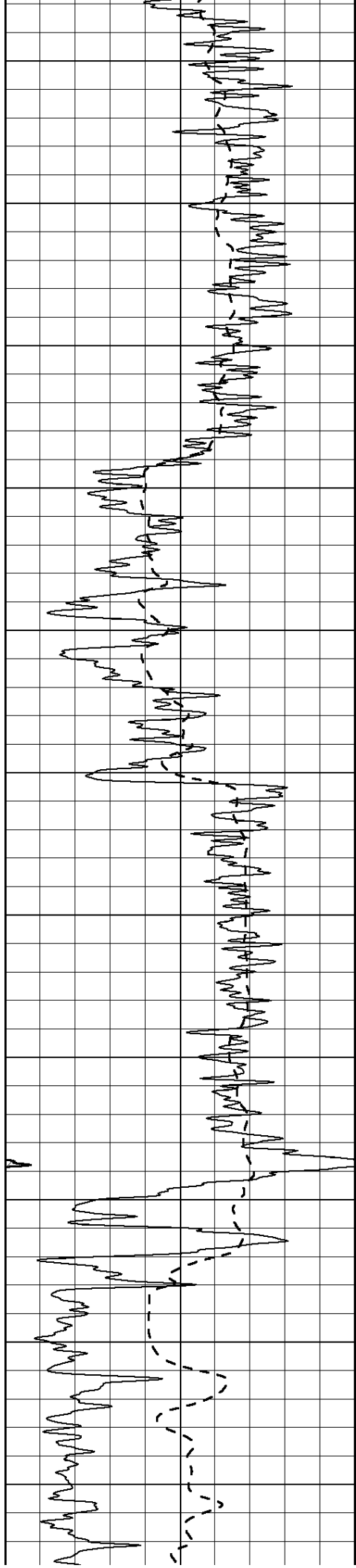
3100

3150

3200







3800

3850

3900

3950

4000

4050

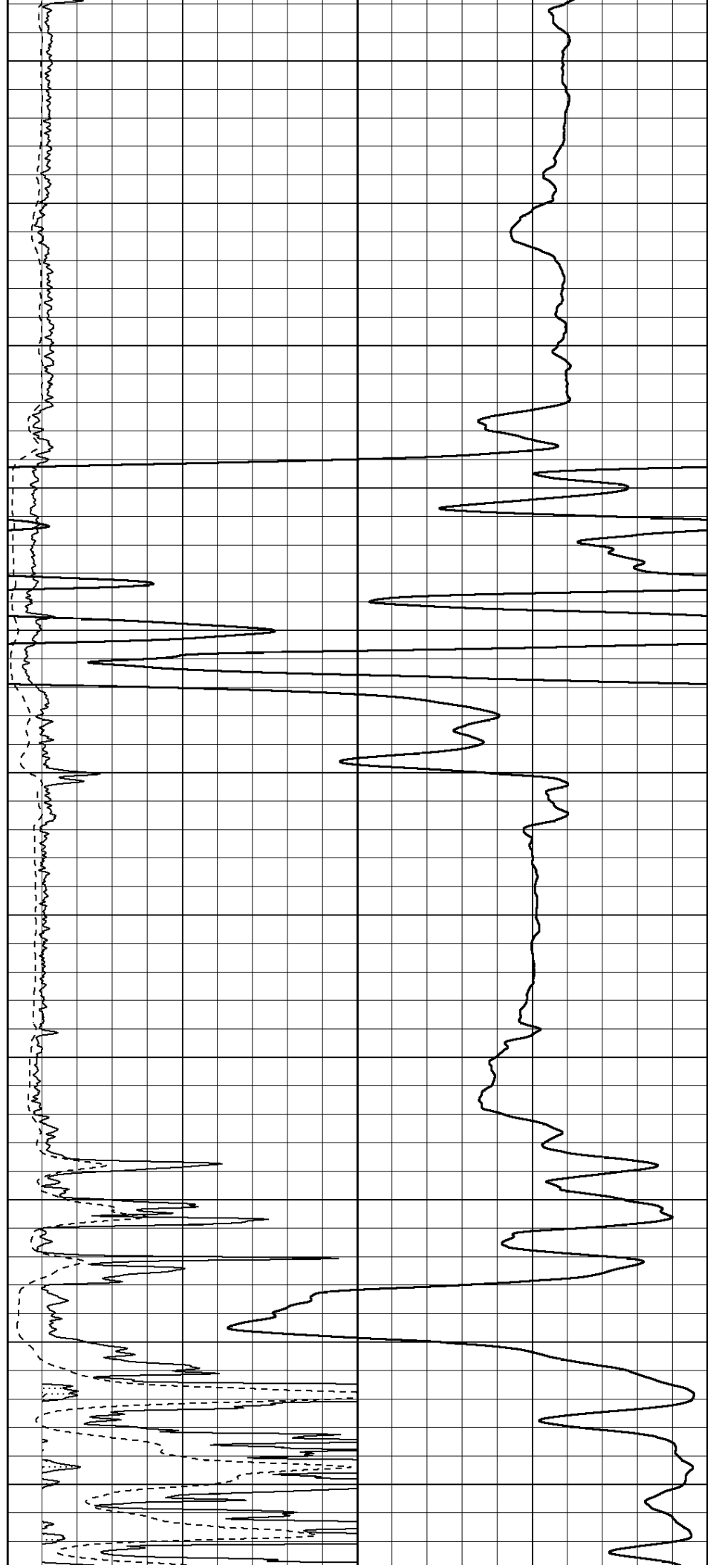
4100

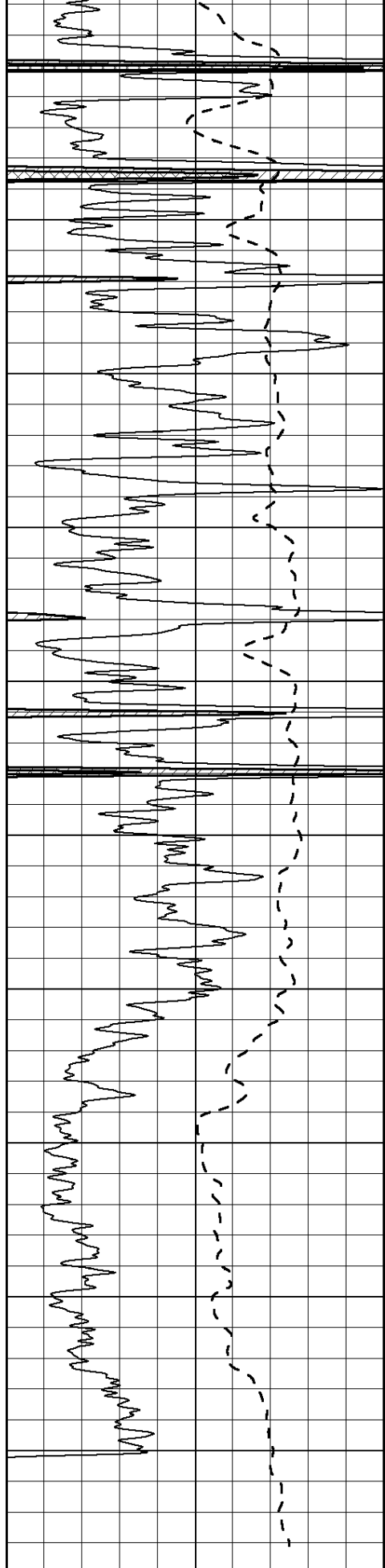
4150

4200

4250

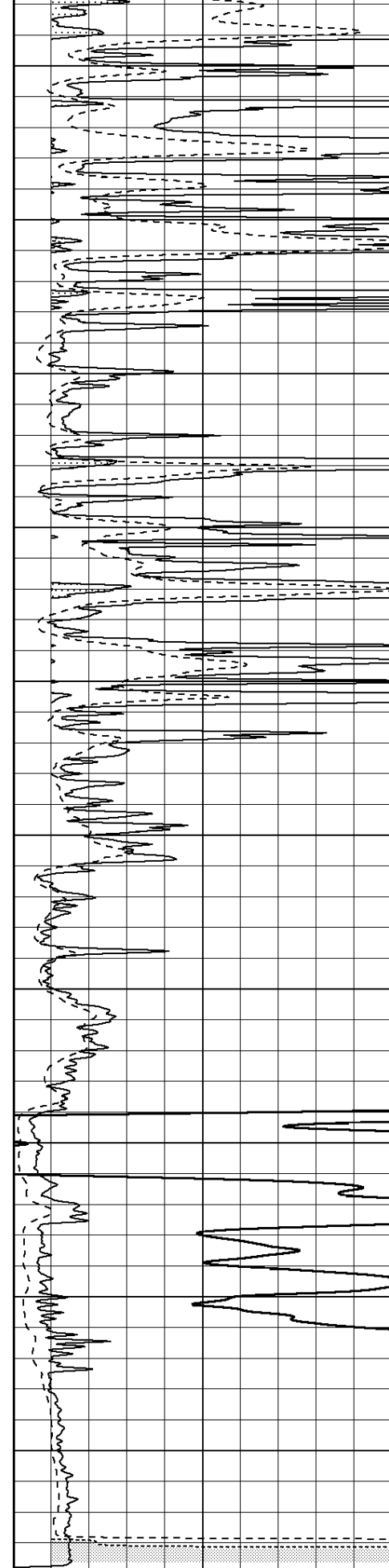
4300



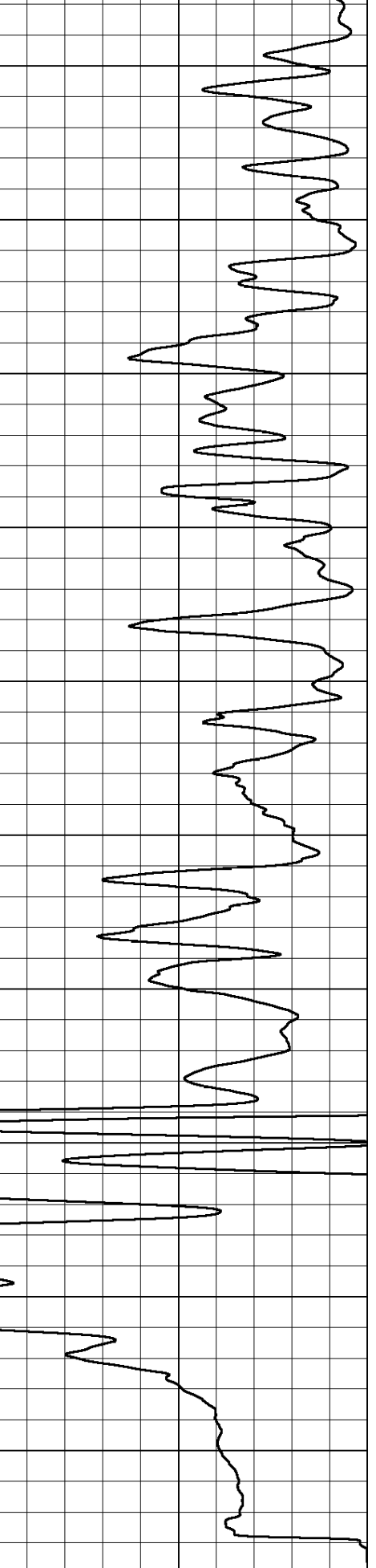


4350  
4400  
4450  
4500  
4550  
4600  
4650  
4700  
4750  
4800

0 Gamma Ray (GAPI) 150  
-100 SP (mV) 100



0 RLL3 (Ohm-m) 50  
0 RILD (Ohm-m) 50



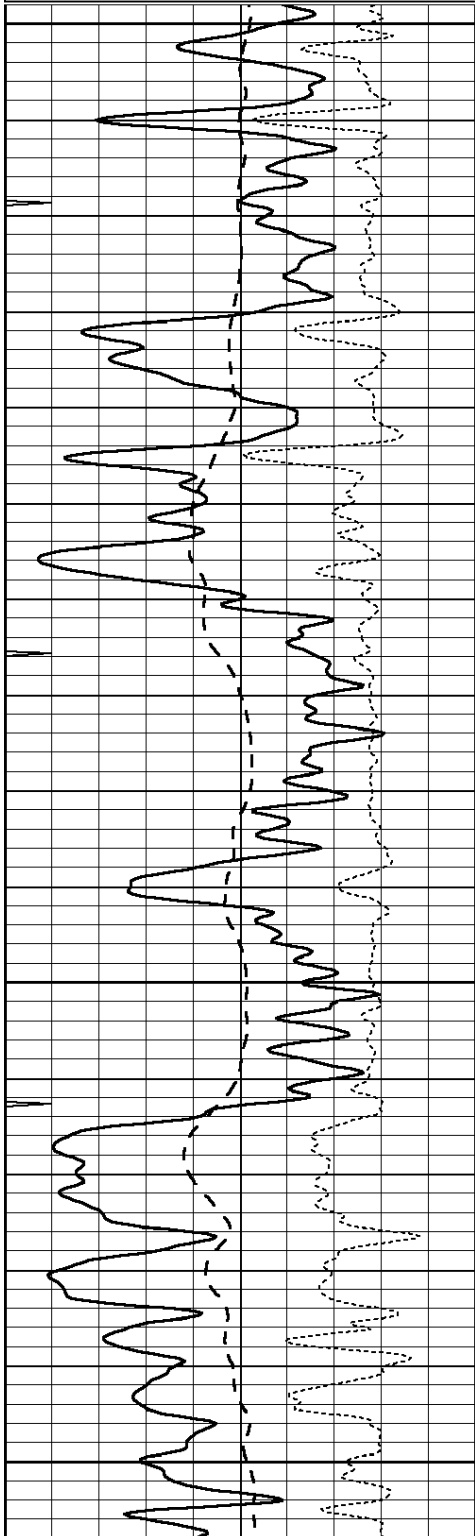
1000 CILD (mmho/m) 0

50	RILD X10 (Ohm-m)	500
50	RLL3 X10 (Ohm-m)	500

Database File: 006289ddn.db  
 Dataset Pathname: pass3.3  
 Presentation Format: dil  
 Dataset Creation: Wed Feb 16 17:45:20 2011 by Calc Open-Cased 090629  
 Charted by: Depth in Feet scaled 1:240

0	GAMMA RAY (GAPI)	150
-100	SP (mV)	100
-250	Rxo/Rt	50
0	MINMK	10

0.2	SHALLOW GUARD (Ohm-m)	2000
0.2	DEEP INDUCTION (Ohm-m)	2000
0.2	MEDIUM INDUCTION (Ohm-m)	2000

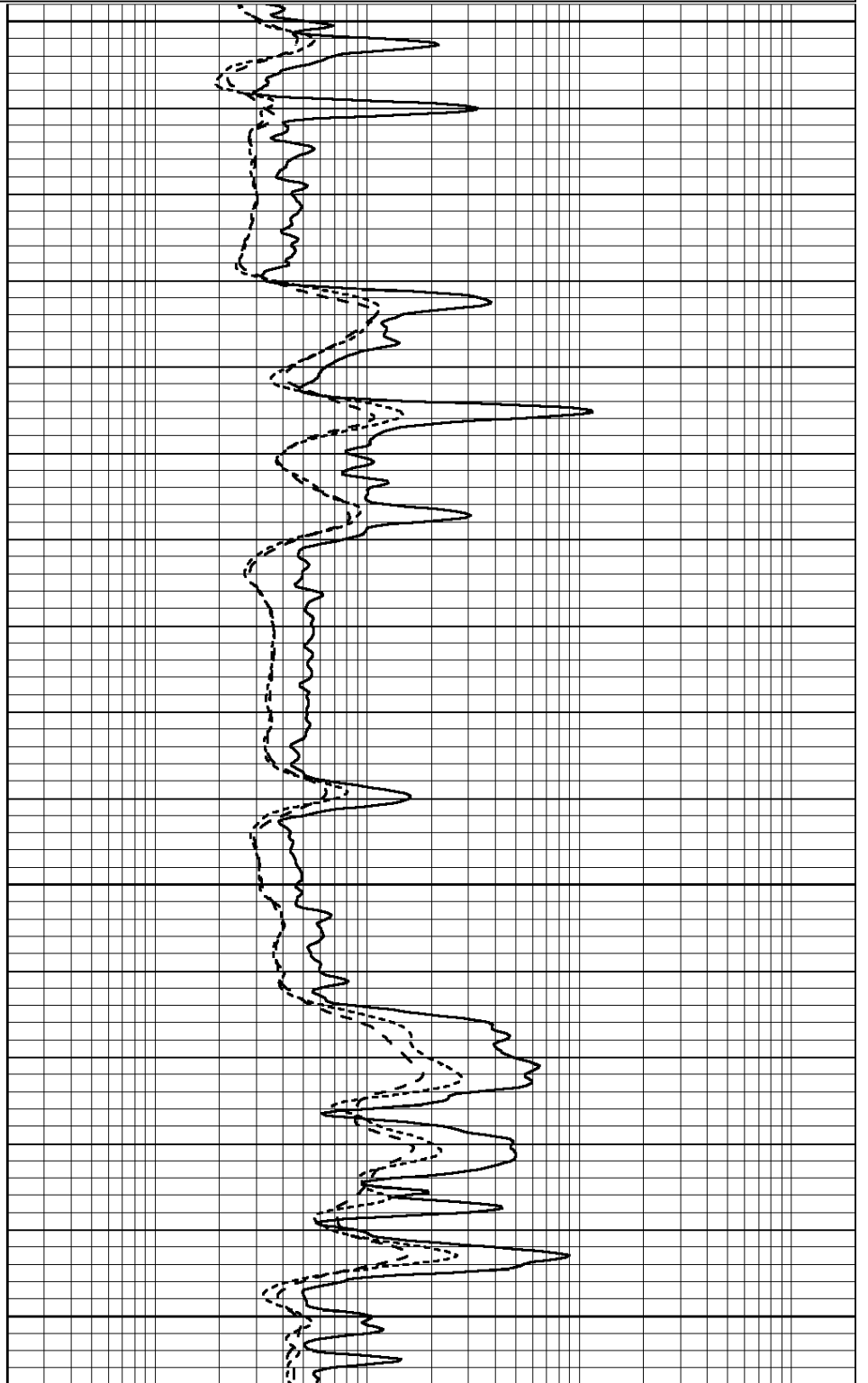


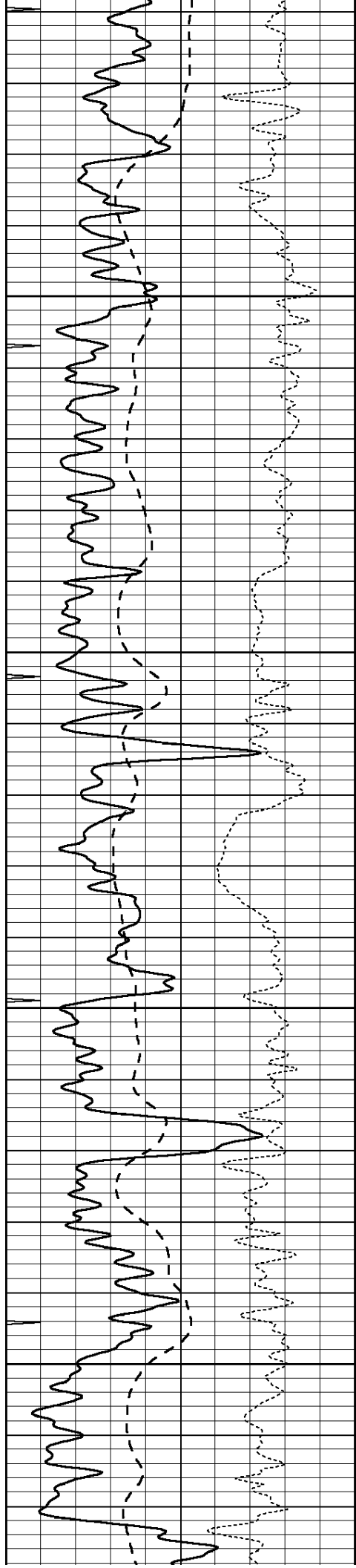
2750

2800

2850

2900



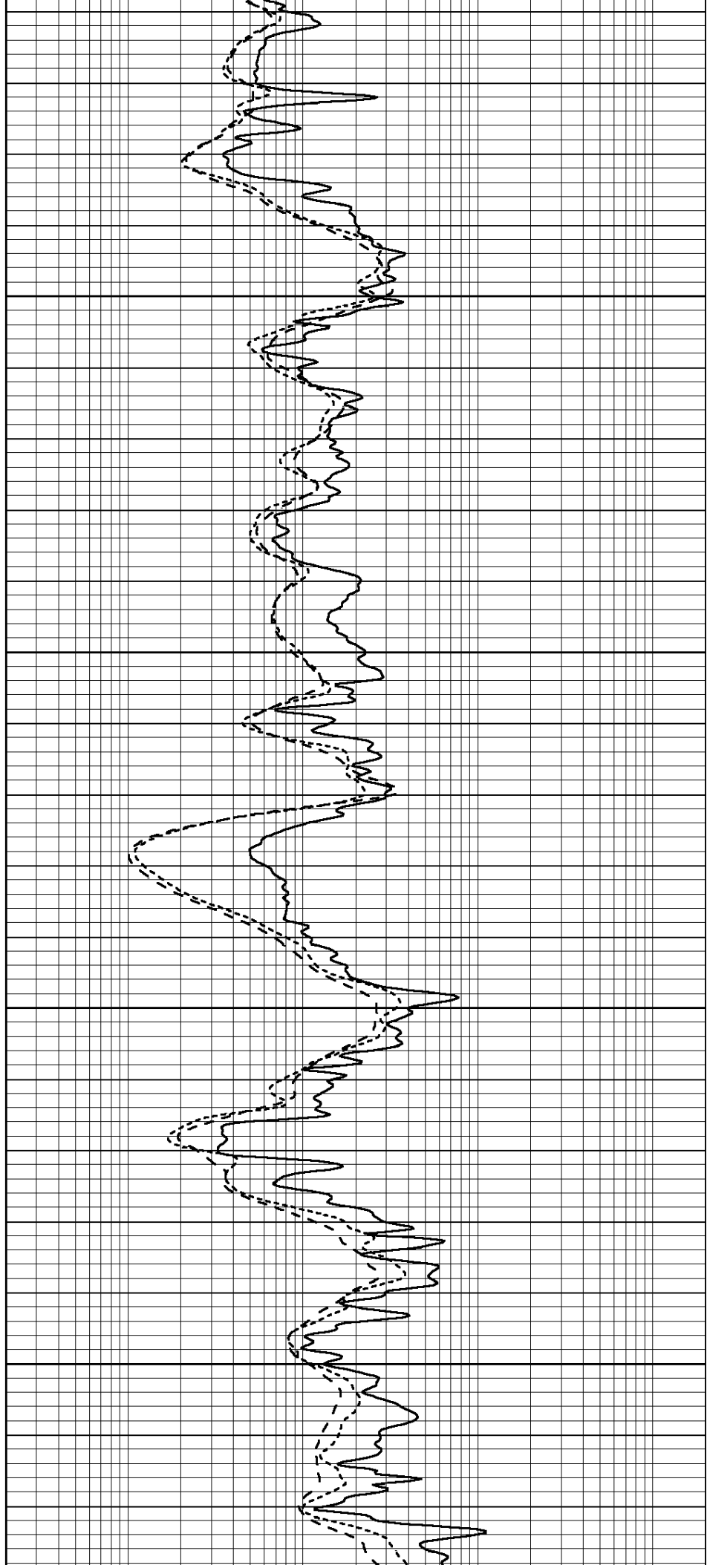


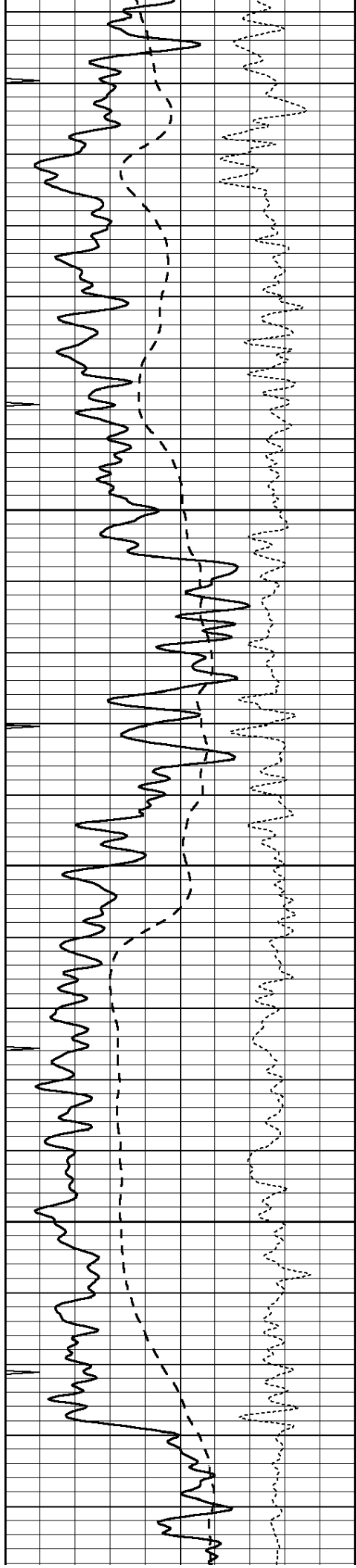
2950

3000

3050

3100



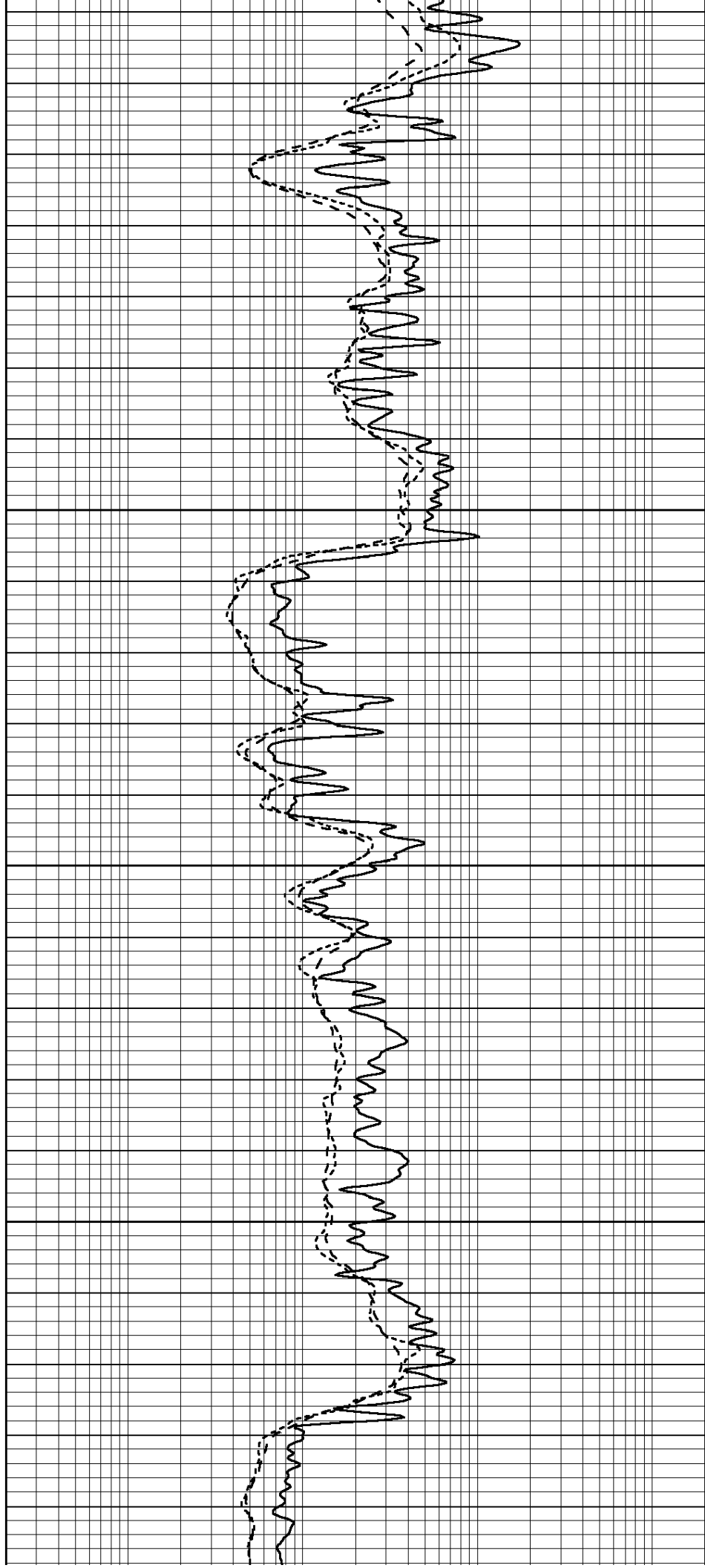


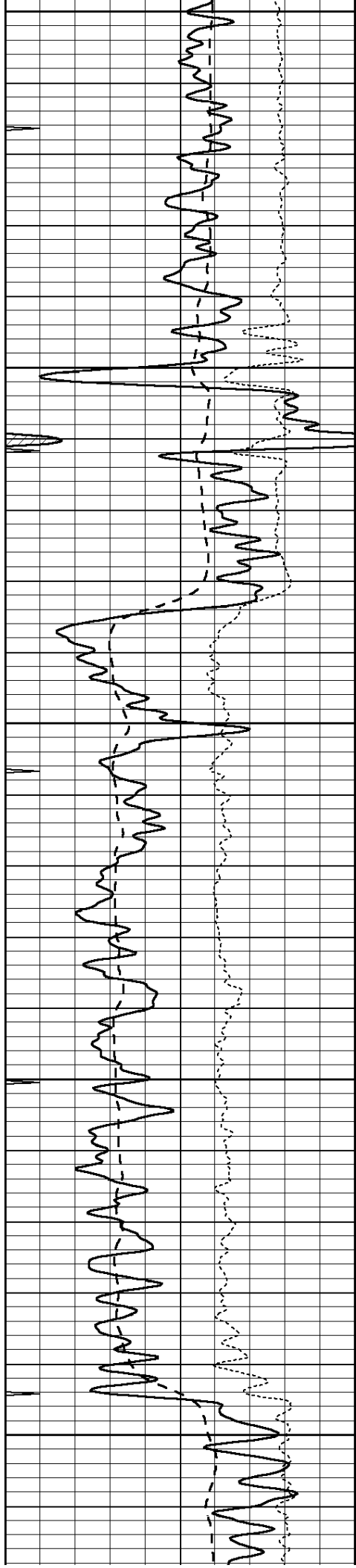
3150

3200

3250

3300





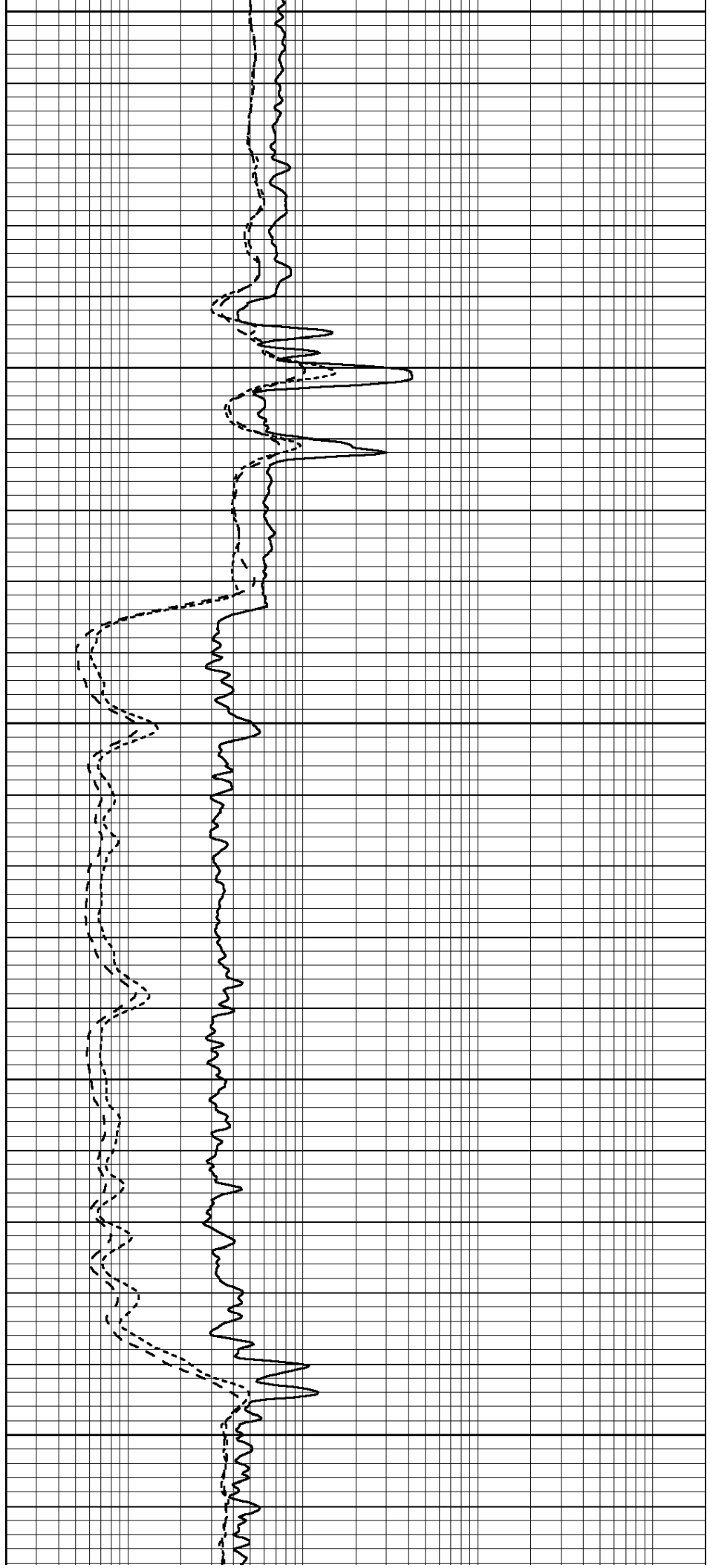
3350

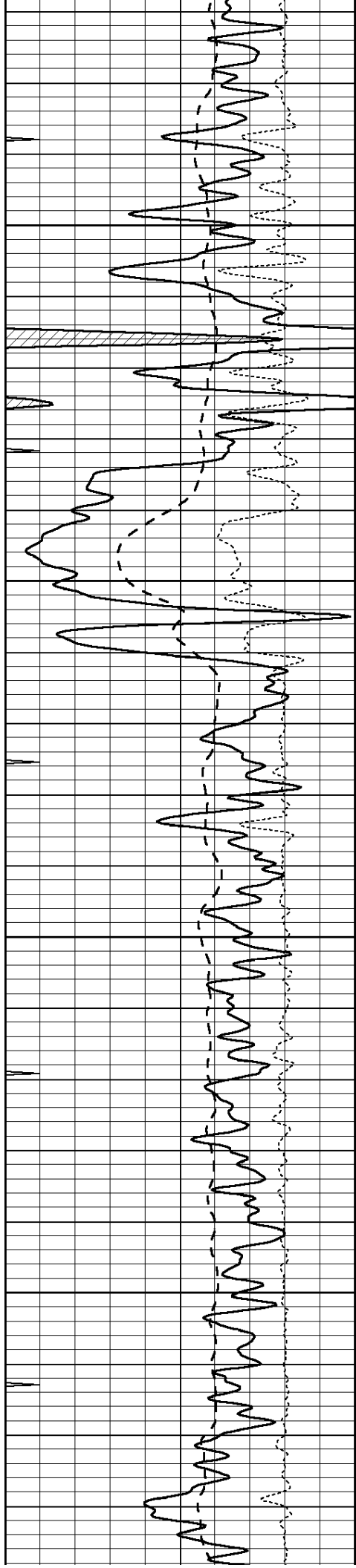
3400

3450

3500

3550



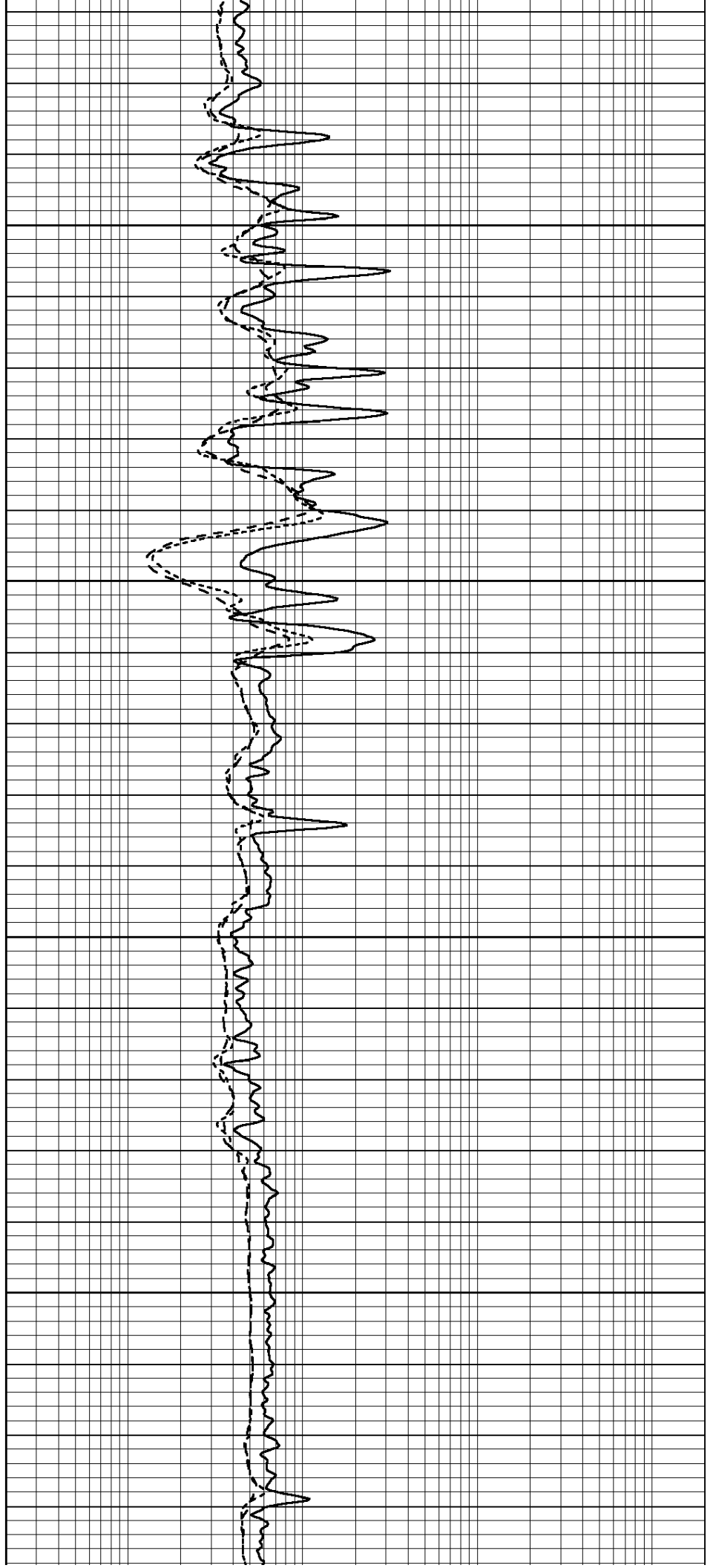


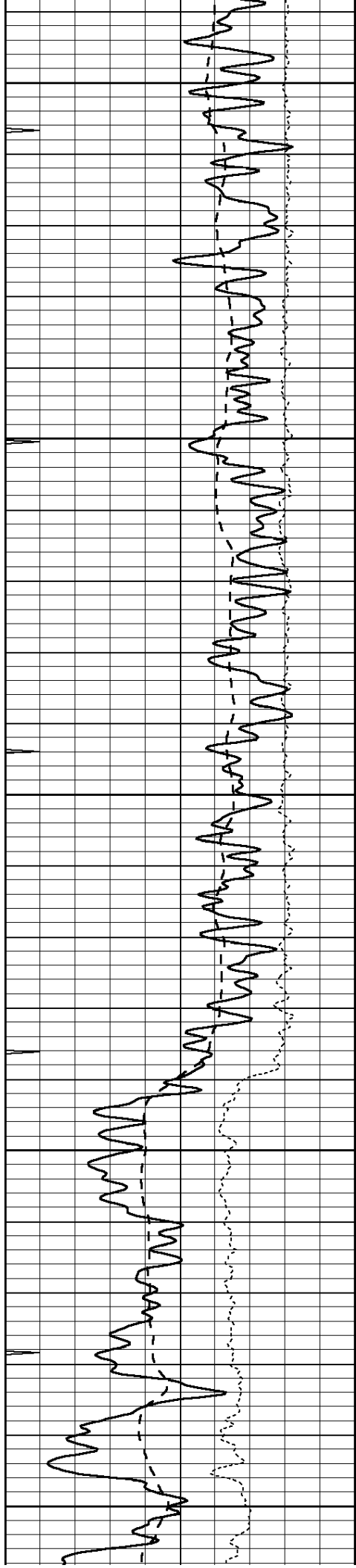
3600

3650

3700

3750





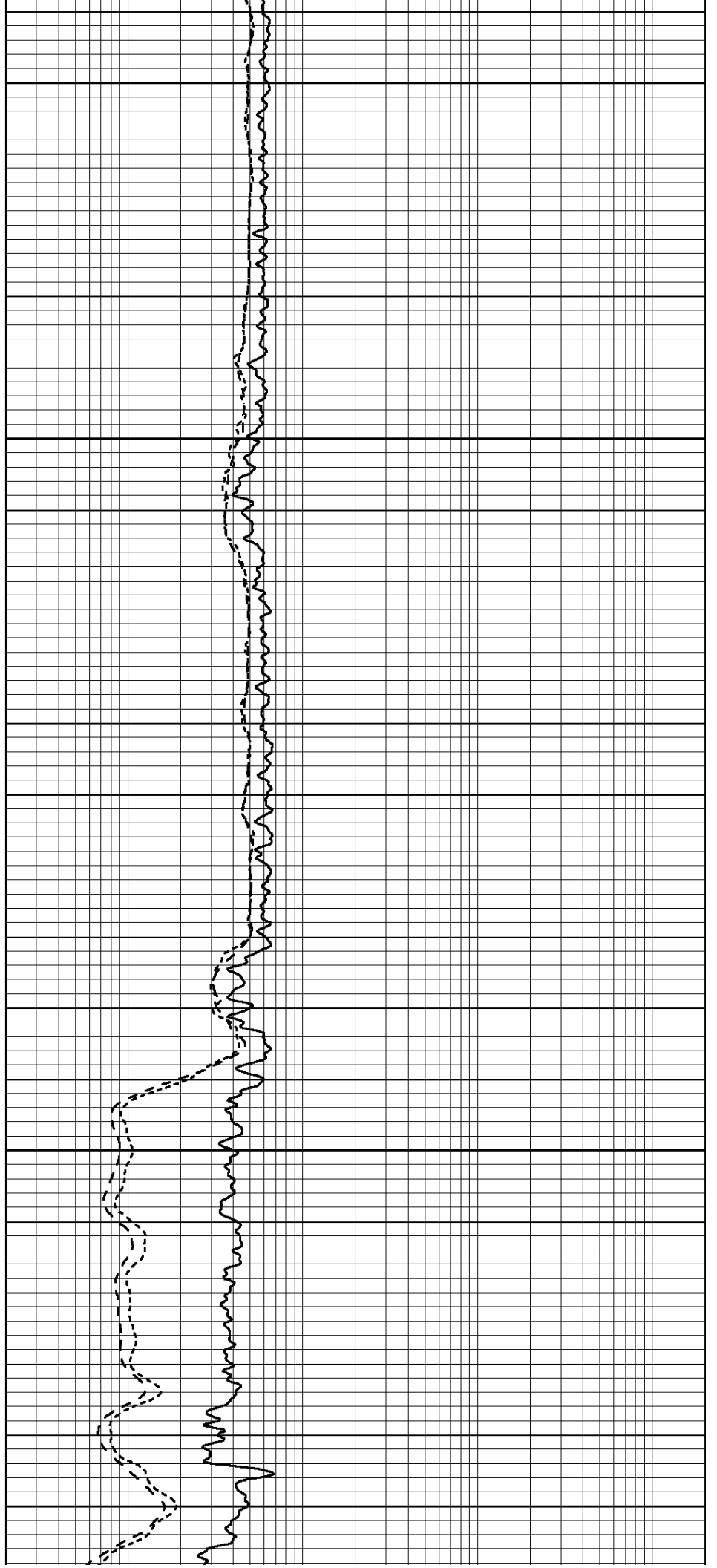
3800

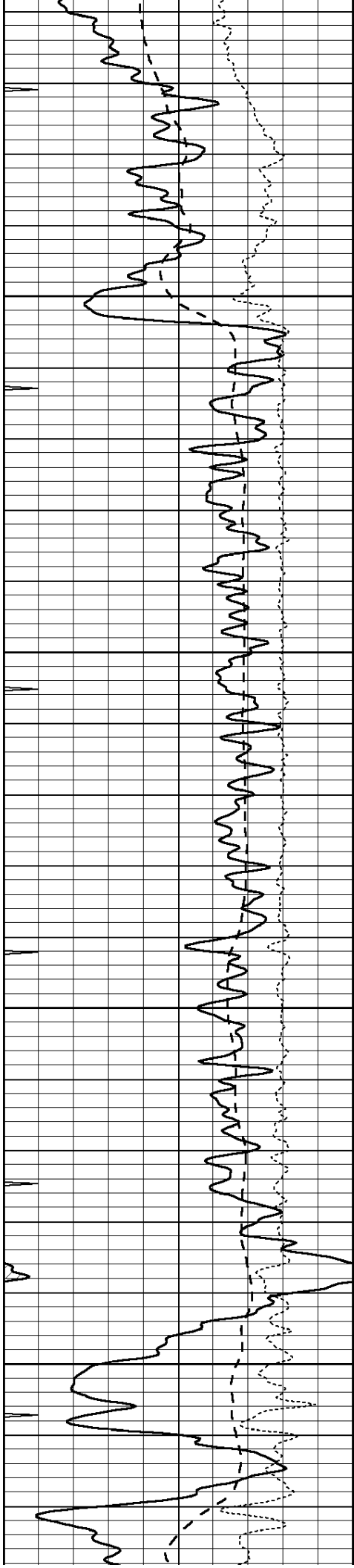
3850

3900

3950

4000



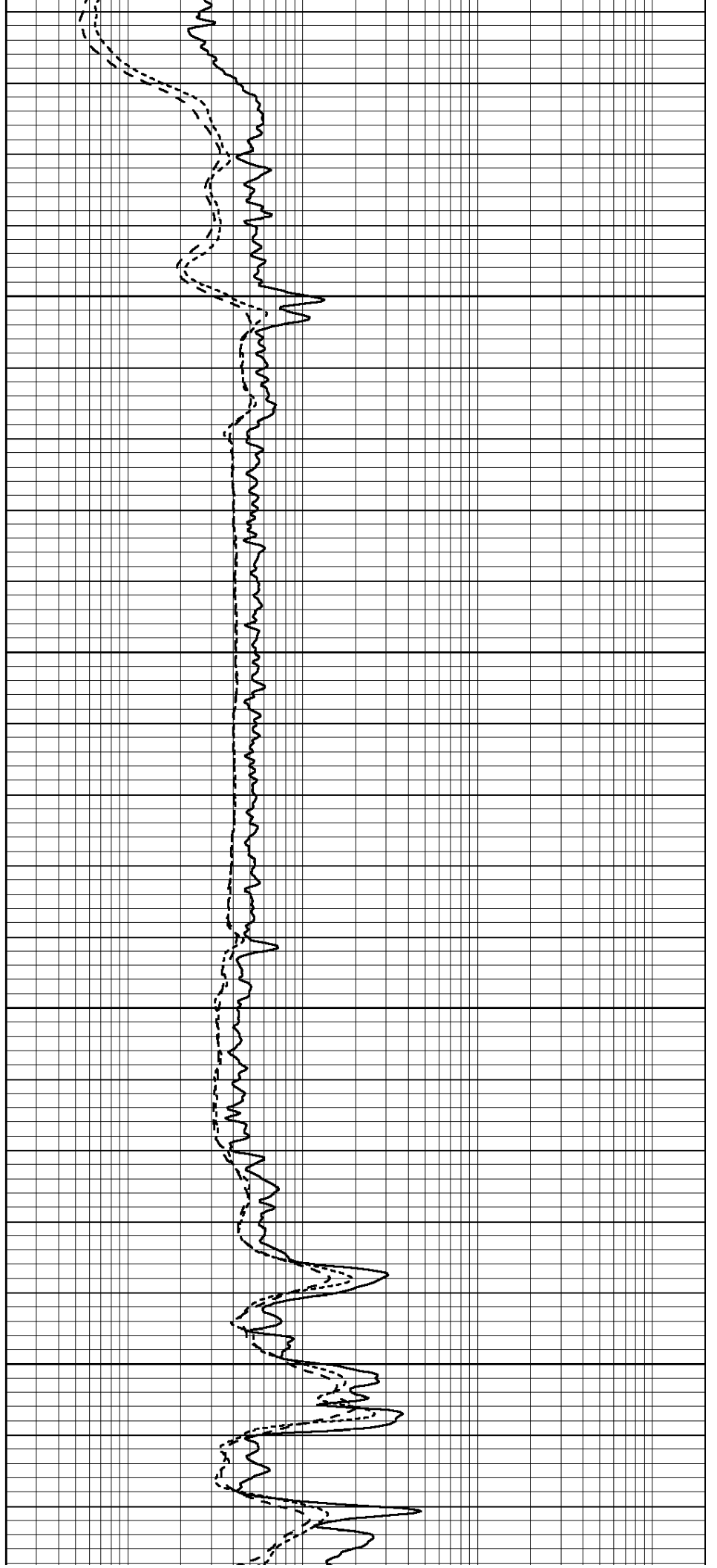


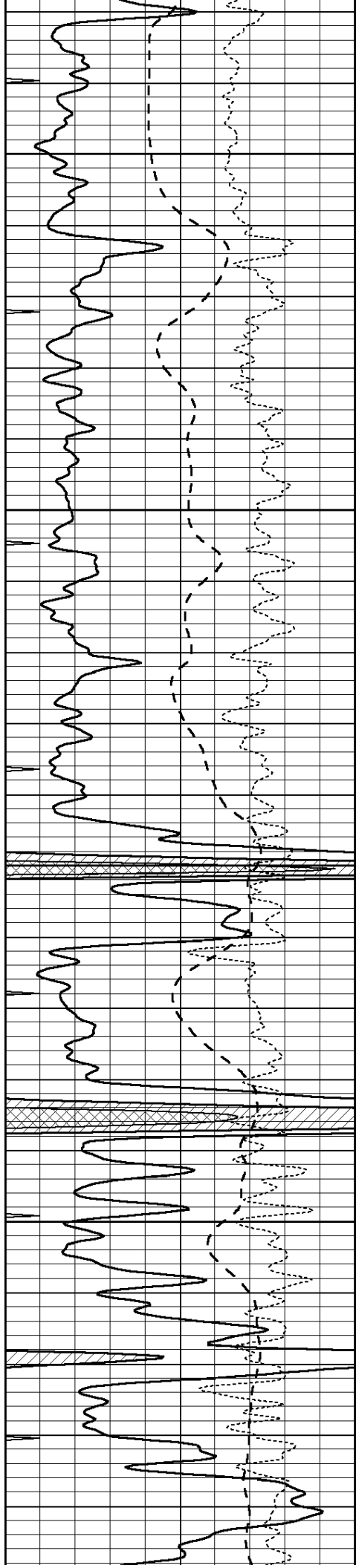
4050

4100

4150

4200



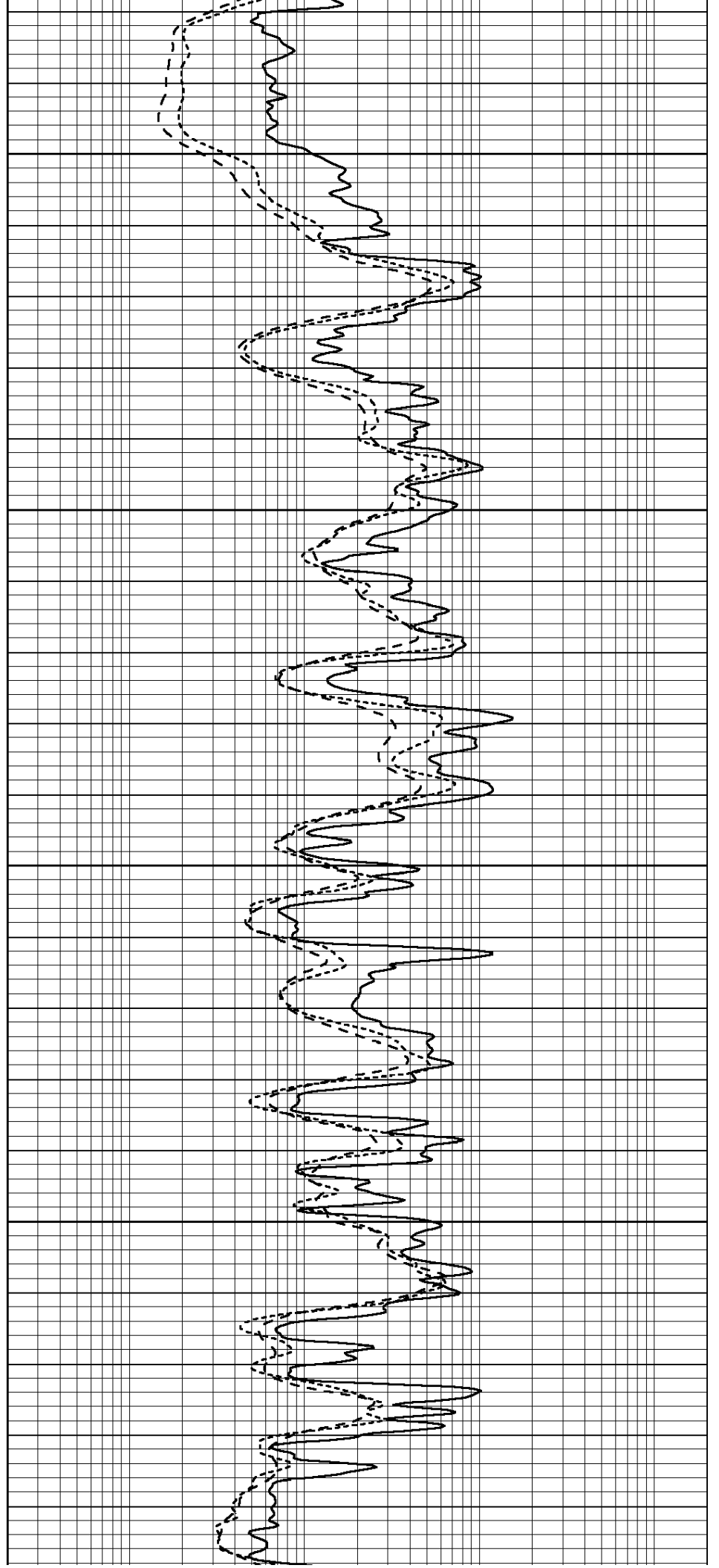


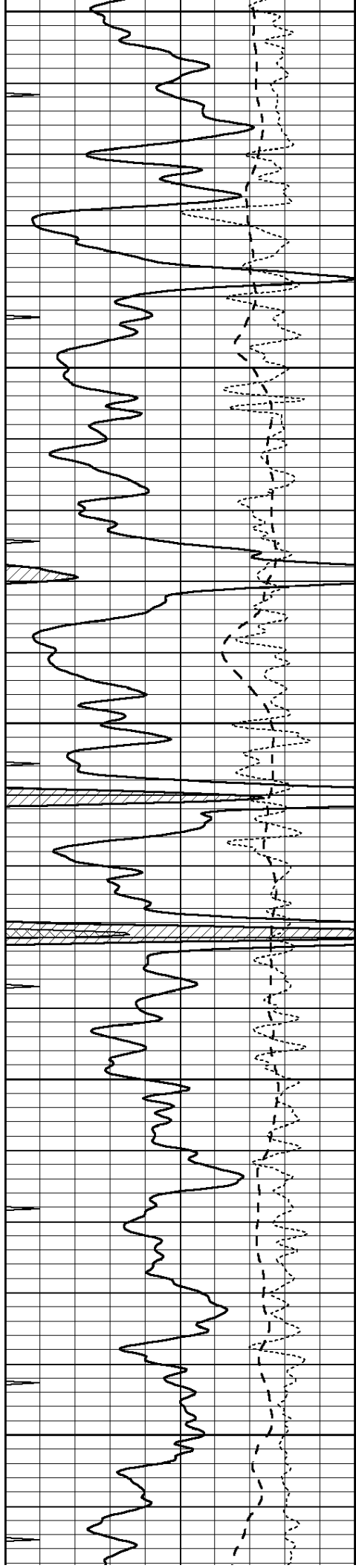
4250

4300

4350

4400





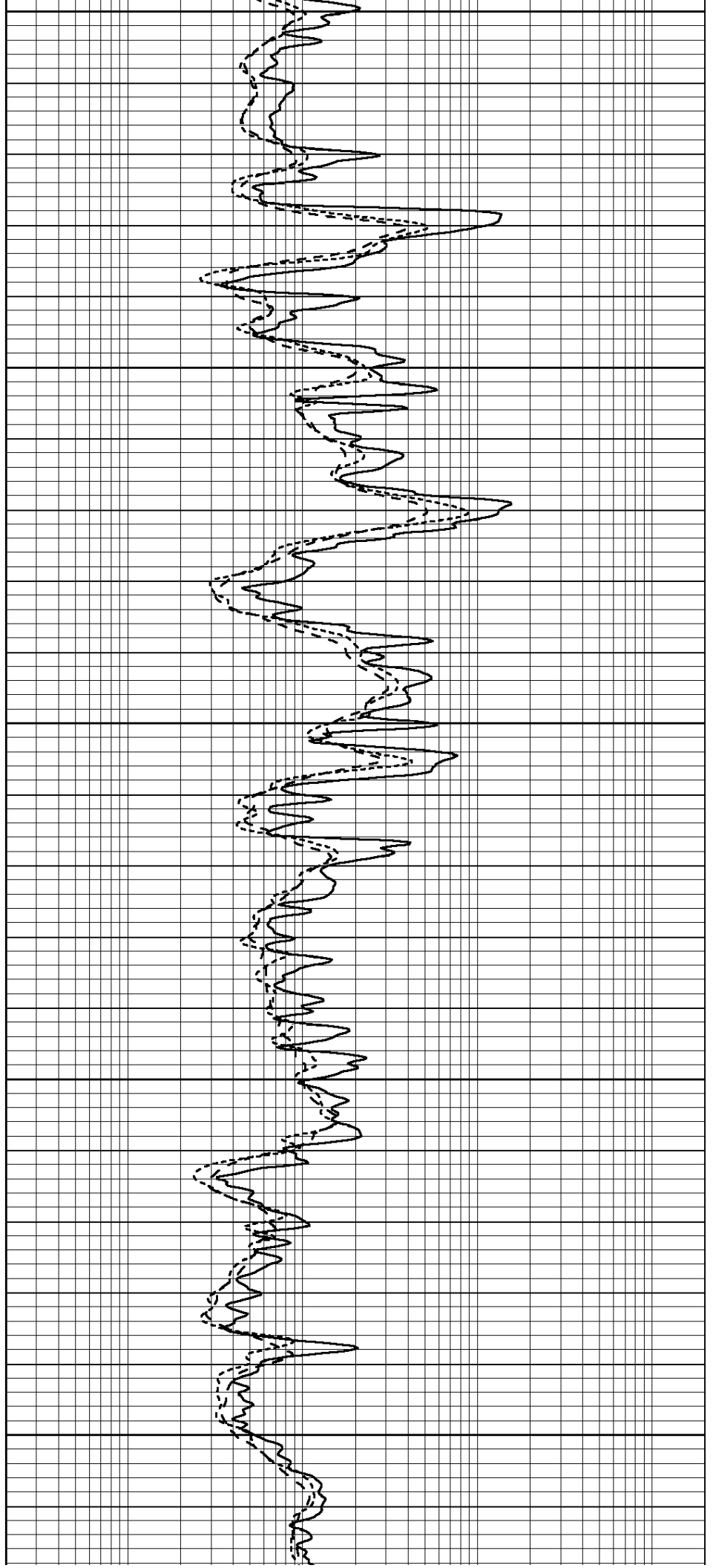
4450

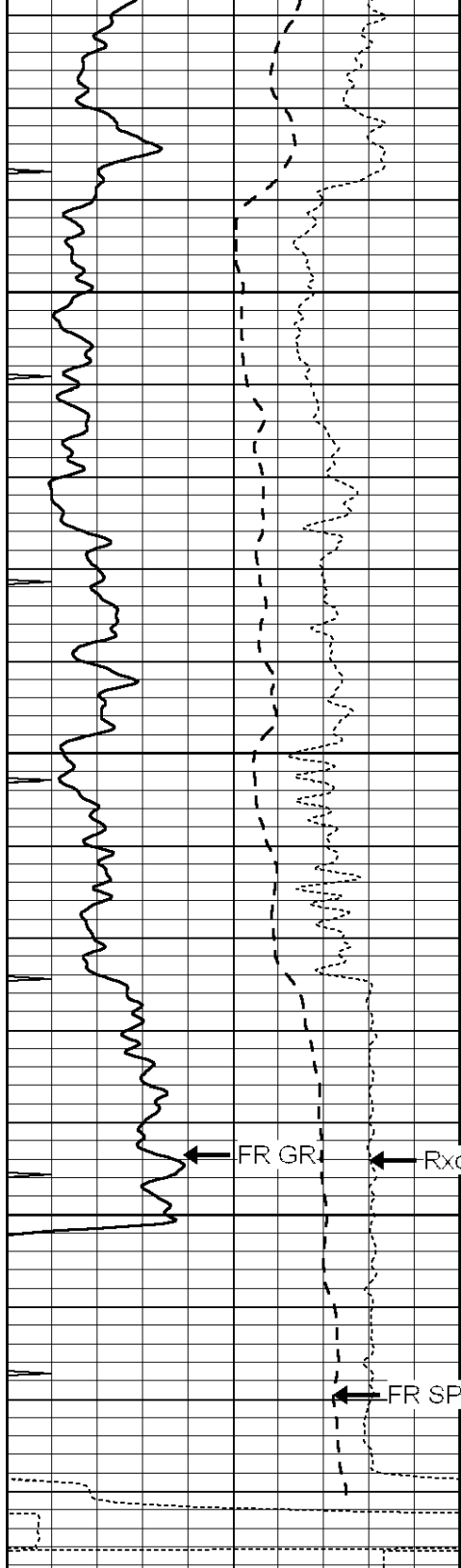
4500

4550

4600

4650





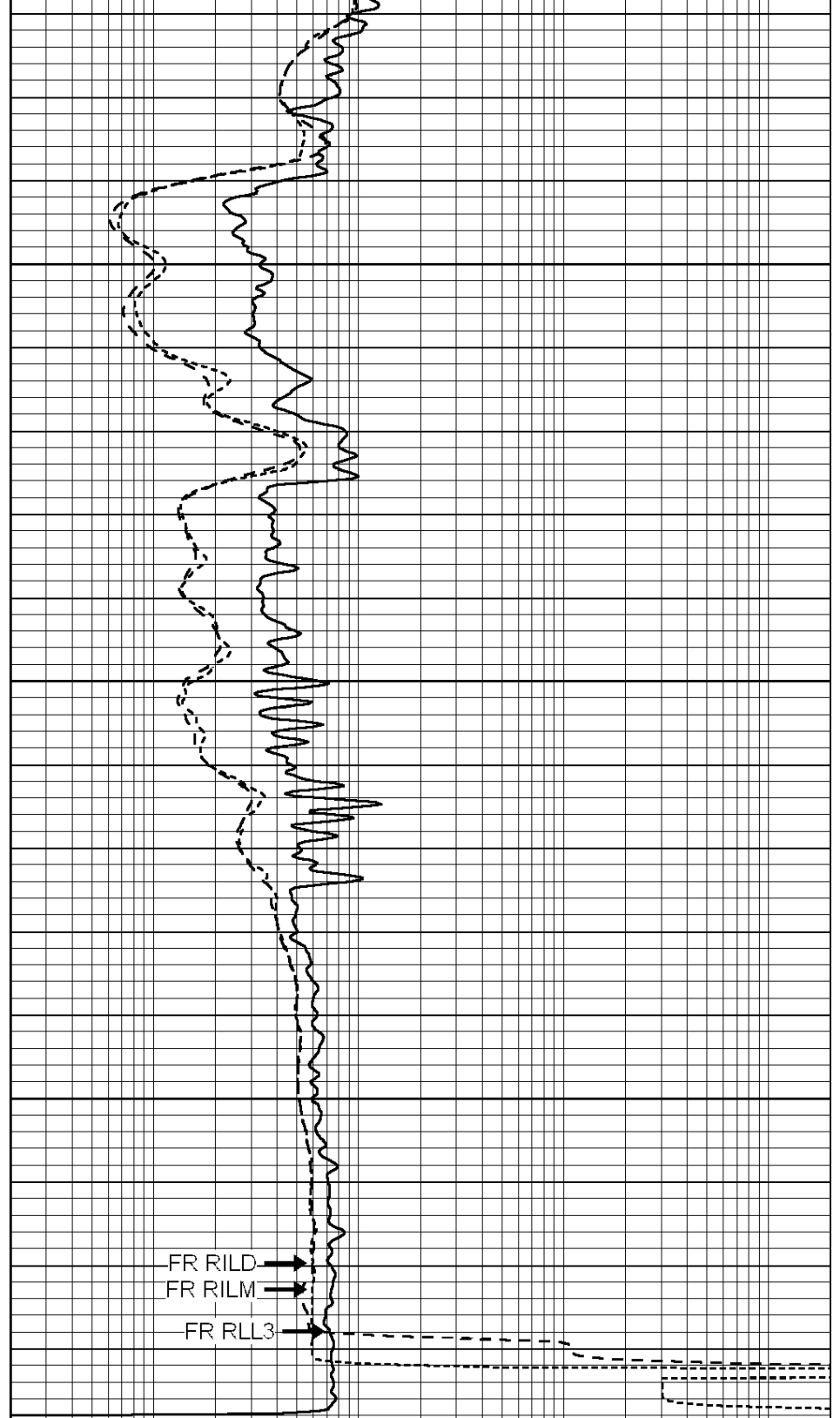
0	GAMMA RAY (GAPI)	150
-100	SP (mV)	100
-250	Rxo/Rt	50
0	MINMK	10

4700

4750

4800

LTD 4830



0.2	SHALLOW GUARD (Ohm-m)	2000
0.2	DEEP INDUCTION (Ohm-m)	2000
0.2	MEDIUM INDUCTION (Ohm-m)	2000



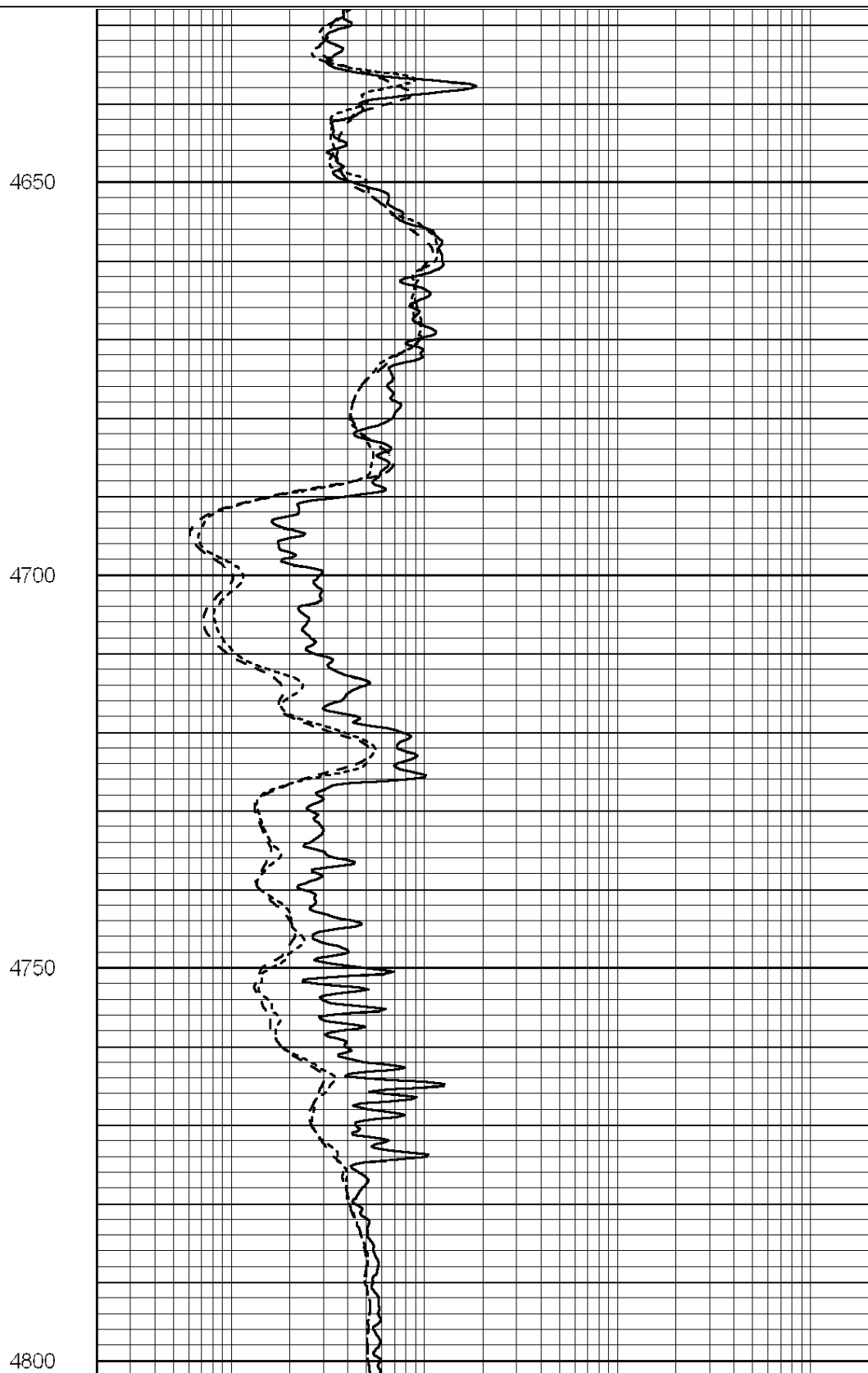
SUPERIOR  
WELL SERVICES  
Hays,  
Kansas

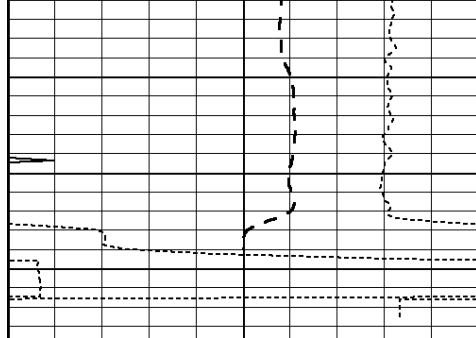
# REPEAT SECTION

Database File: 006289ddn.db  
 Dataset Pathname: pass2.1  
 Presentation Format: dil  
 Dataset Creation: Wed Feb 16 17:07:37 2011  
 Charted by: Depth in Feet scaled 1:240

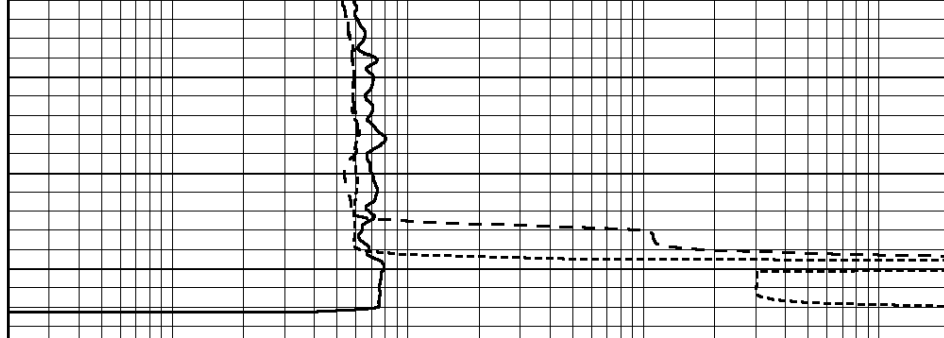
0	GAMMA RAY (GAPI)	150
-100	SP (mV)	100
-250	Rxo/Rt	50
0	MINMK	10

0.2	SHALLOW GUARD (Ohm-m)	2000
0.2	DEEP INDUCTION (Ohm-m)	2000
0.2	MEDIUM INDUCTION (Ohm-m)	2000





0	GAMMA RAY (GAPI)	150
-100	SP (mV)	100
-250	Rxo/Rt	50
0	MINMK	10



0.2	SHALLOW GUARD (Ohm-m)	2000
0.2	DEEP INDUCTION (Ohm-m)	2000
0.2	MEDIUM INDUCTION (Ohm-m)	2000

### Calibration Report

Database File: 006289ddn.db  
 Dataset Pathname: pass3.4  
 Dataset Creation: Wed Feb 16 19:47:46 2011 by Calc Open-Cased 090629

### Dual Induction Calibration Report

Serial-Model: DIL3-GEAR  
 Performed: Tue Feb 15 19:33:25 2011

Loop:	Readings			References			Results	
	Air	Loop		Air	Loop		m	b
Deep	0.011	0.656	V	0.000	400.000	mmho/m	640.000	0.000
Medium	0.013	0.740	V	0.000	462.500	mmho/m	700.000	-12.000
Internal:	Zero	Cal		Zero	Cal		m	b
Deep	0.002	0.645	V	0.000	400.000	mmho/m	622.059	-1.071
Medium	0.007	0.740	V	0.000	462.500	mmho/m	631.393	-4.555

### Litho Density Calibration Report

Serial: 003N Model: PRB  
 Performed Tue Sep 08 14:14:44 2009

#### Litho Density Calibration

	Background	Magnesium	Aluminum	Sandstone	
Window 1	2042.6	12312.8	4225.8	13758.4	cps
Window 2	1855.8	10134.7	3624.2	11113.1	cps
Window 3	1639.4	6760.2	2716.3	7260.3	cps
Window 4	466.4	469.2	466.1	476.5	cps
Long Space	0.0	8278.9	1768.4	9257.4	cps
Short Space	2.2	2377.3	1544.1	2574.2	cps
Rho		1.7100	2.5900	1.3800	g/cc
Pe			2.5700	1.5500	
Rib Angle	: 44.4	Rib Slope	: 0.979	Density/Spine Ratio	: 0.549
Spine Angle	: 74.4	Spine Slope	: 3.577	Spine Intercept	: -18.8

#### Caliper

	Readings	Reference	
Low Ref	1.8	6.0	
High Ref	4.6	14.0	
Gain:	2.9		Offset: 1.0

Compensated Neutron Calibration Report

Serial Number: NEU\_3I  
 Tool Model: G

CALIBRATION

Detector	Readings	Target	Normalization
Short Space	997.00 cps	1000.00 cps	1.0000
Long Space	986.00 cps	1000.00 cps	1.0000

Gamma Ray Calibration Report

Serial Number: GR3  
 Tool Model: OPEN  
 Performed: Tue Feb 15 22:43:17 2011

Calibrator Value: 200.0 GAPI

Background Reading: 3.0 cps  
 Calibrator Reading: 186.0 cps

Sensitivity: 0.6500 GAPI/cps