



SUPERIOR
Hays,
Kansas

MICRO
LOG

Company LOTUS OPERATING CO. LLC.
Well #2 KOPPITZ
Field STRANATHAN
County BARBER
State KANSAS

Company LOTUS OPERATING COMPANY, LLC.
Well #2 KOPPITZ
Field STRANATHAN
County BARBER State KANSAS

Location: API # : 15-007-23619-0000
2385' FNL & 360' FEL
SEC 2 TWP 35S RGE 12W
Permanent Datum GROUND LEVEL Elevation 1408
Log Measured From KELLY BUSHING 9' A.G.L.
Drilling Measured From KELLY BUSHING
Other Services
CDL/CNL/PE
DIL/SONIC
Elevation
K.B. 1417
D.F. 1415
G.L. 1408

Date	11/24/10
Run Number	TWO
Depth Driller	5270
Depth Logger	5275
Bottom Logged Interval	5252
Top Log Interval	3700
Casing Driller	10 3/4"@283'
Casing Logger	283
Bit Size	7 7/8"
Type Fluid in Hole	CHEMICAL MUD
Density / Viscosity	9.6/44
pH / Fluid Loss	10.0/9.0
Source of Sample	FLOWLINE
Rim @ Meas. Temp	1.40@64F
Rmf @ Meas. Temp	1.05@64F
Rmc @ Meas. Temp	1.68@64F
Source of Rmf / Rmc	MEASUREMENT
Rim @ BHT	706@127F
Time Circulation Stopped	5.5 HOURS
Time Logger on Bottom	8:30 A.M.
Maximum Recorded Temperature	127F
Equipment Number	0836
Location	HAYS, KANSAS
Recorded By	JEFF LUEBBERS
Witnessed By	TIM HELLMAN

<<< Fold Here >>>

All interpretations are opinions based on inferences from electrical or other measurements and we cannot and do not guarantee the accuracy or correctness of any interpretation, and we shall not, except in the case of gross or willful negligence on our part, be liable or responsible for any loss, costs, damages, or expenses incurred or sustained by anyone resulting from any interpretation made by any of our officers, agents or employees. These interpretations are also subject to our general terms and conditions set out in our current Price Schedule.

Comments

THANK YOU FOR USING SUPERIOR WELL SERVICE HAYS, KANSAS (785) 628-6395
DIRECTIONS
MEDICINE LODGE, KS. (HWY 160 & 281 JUNCTION) 17S. ON HWY 281 TO MM #7, 1W. ON "DRIFTWOOD RD." TO "T", 1/2S., W. INTO

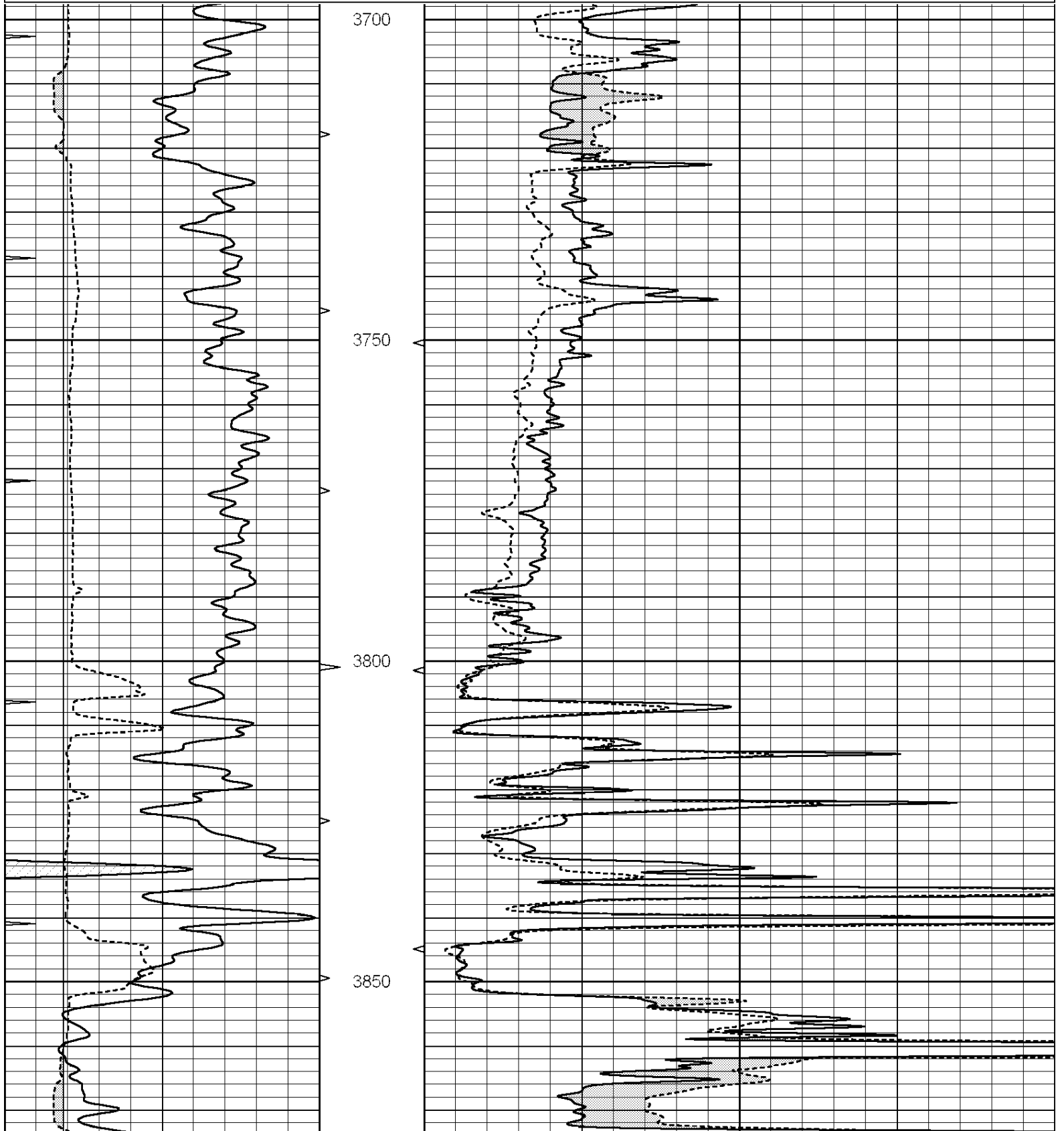


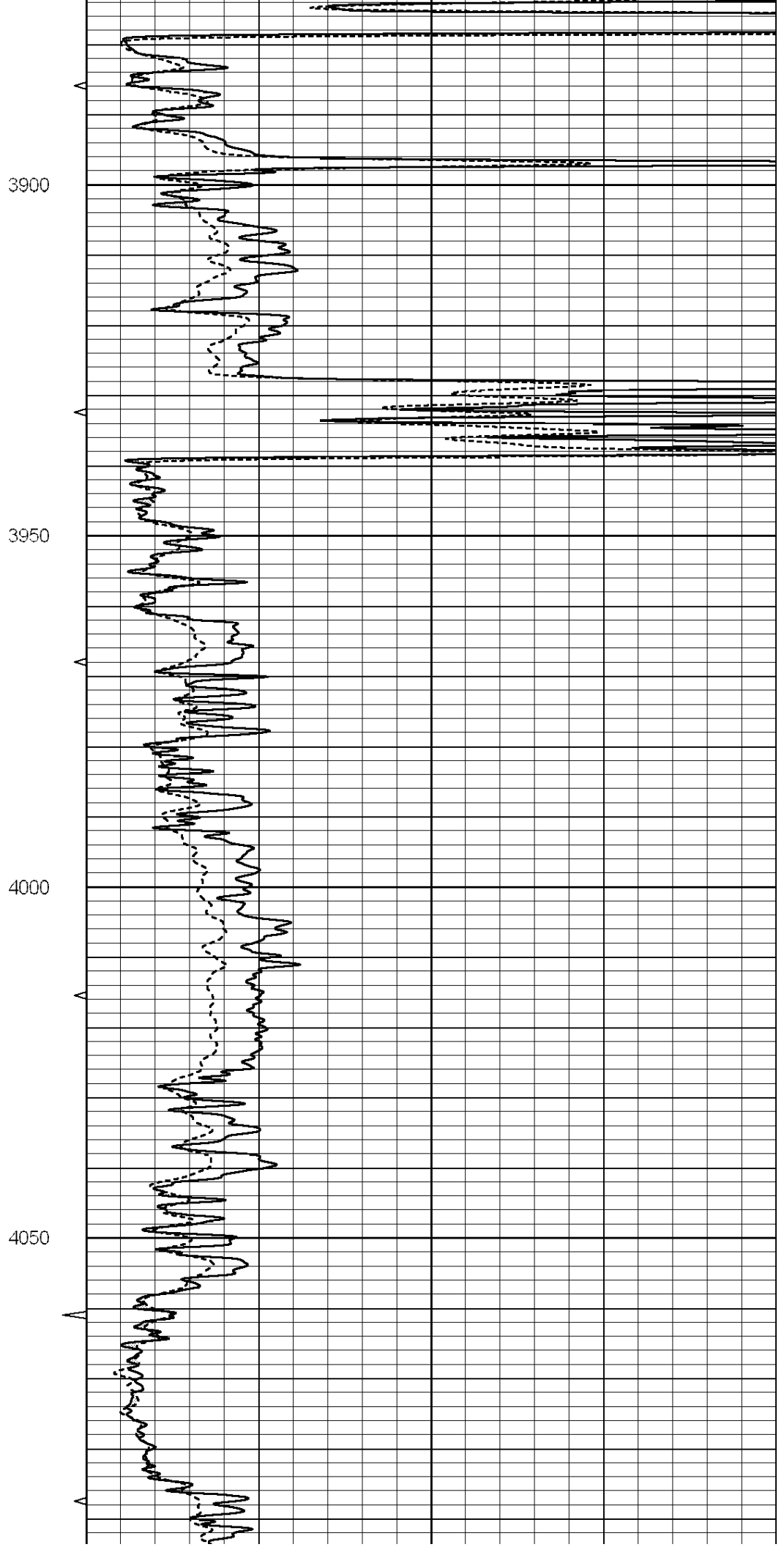
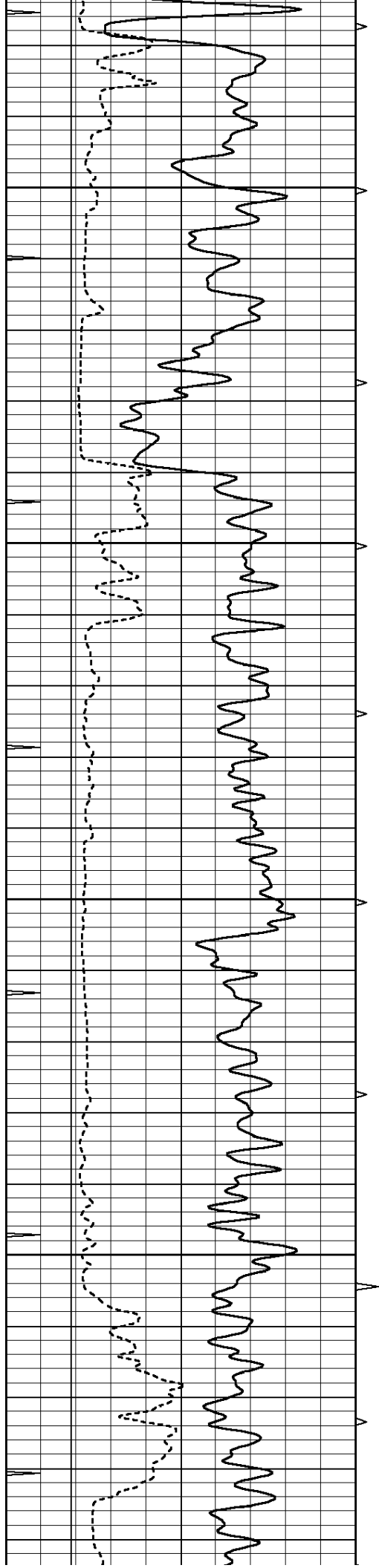
SUPERIOR
Hays,
Kansas

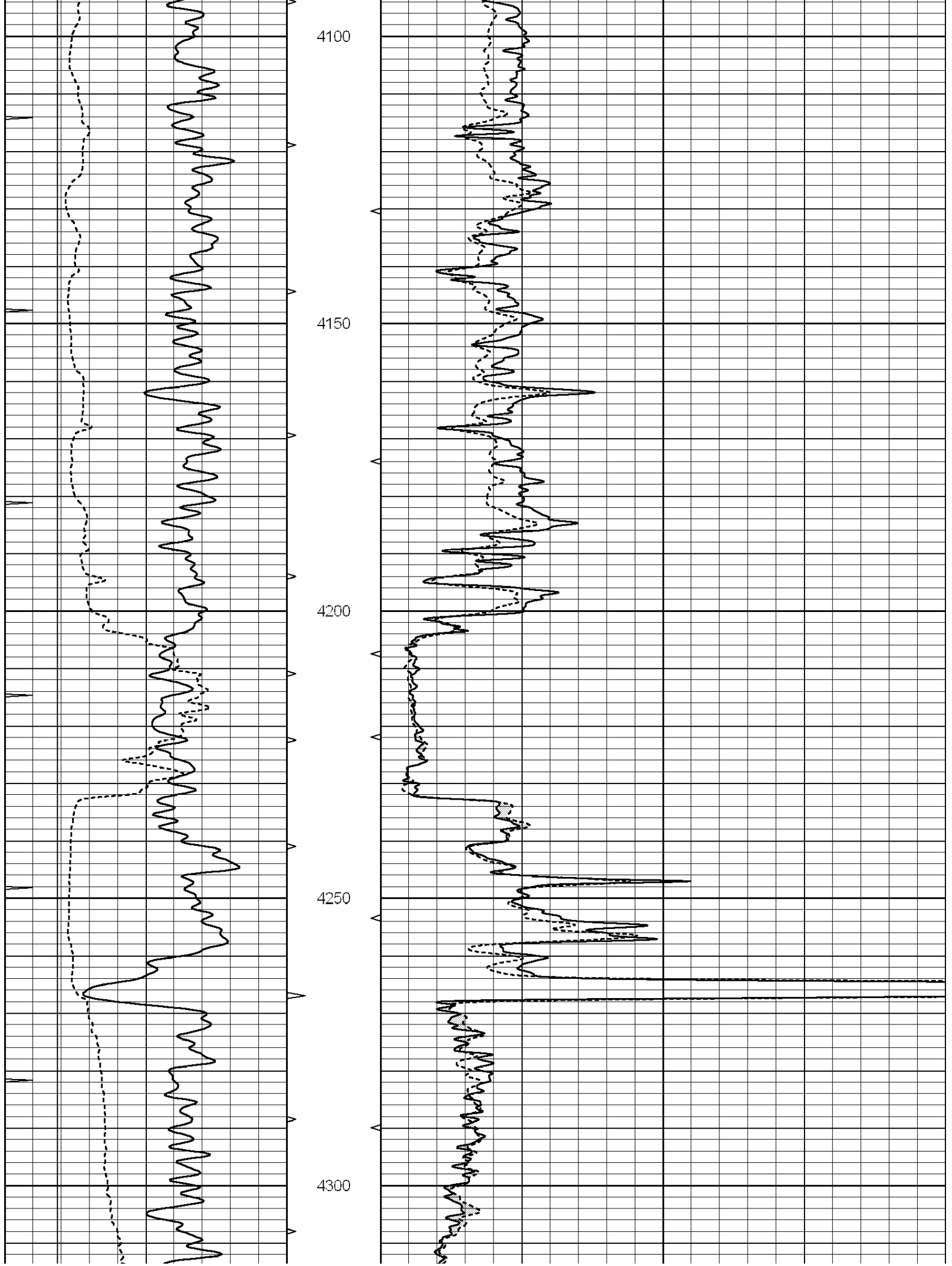
MAIN SECTION

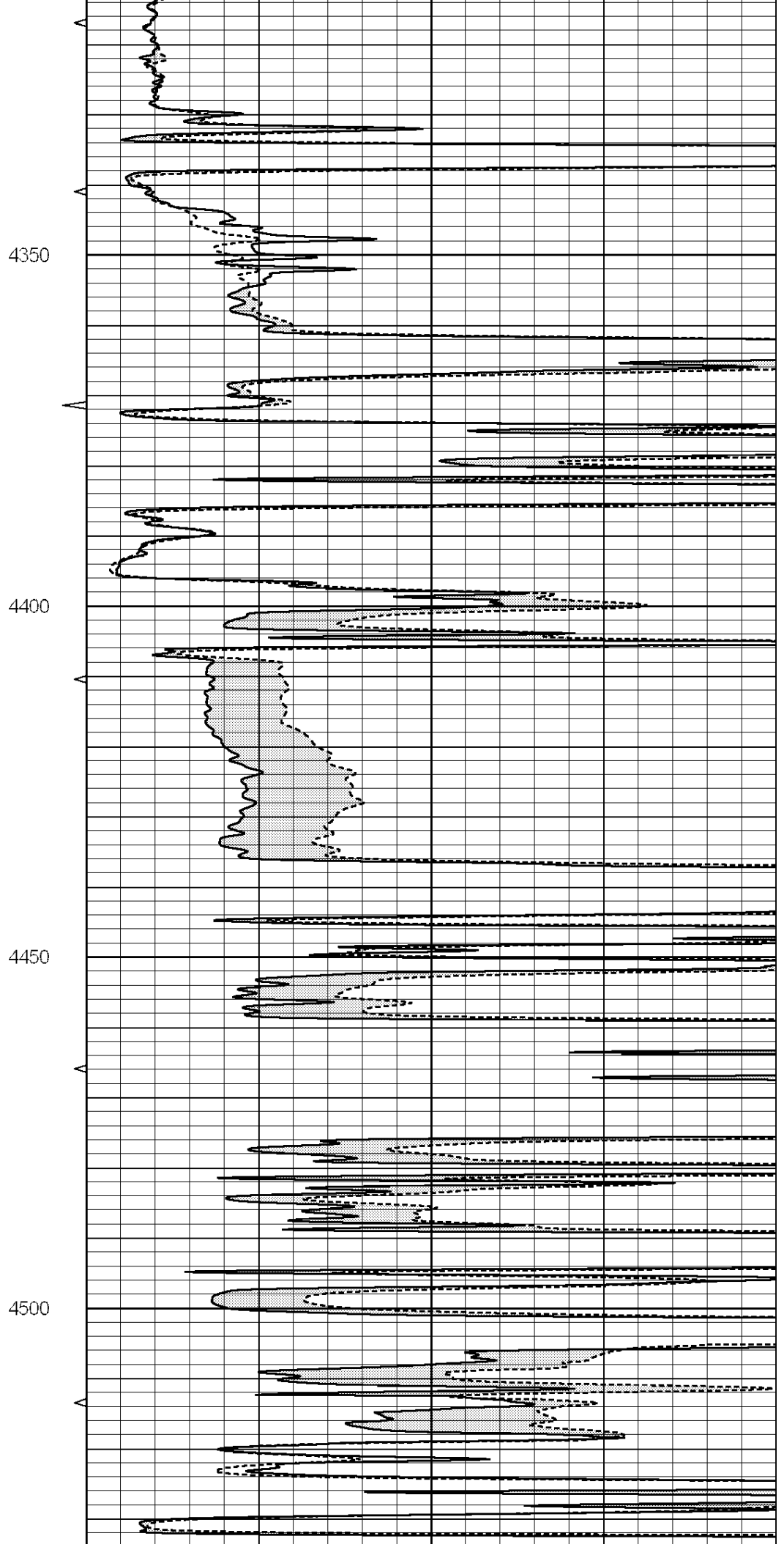
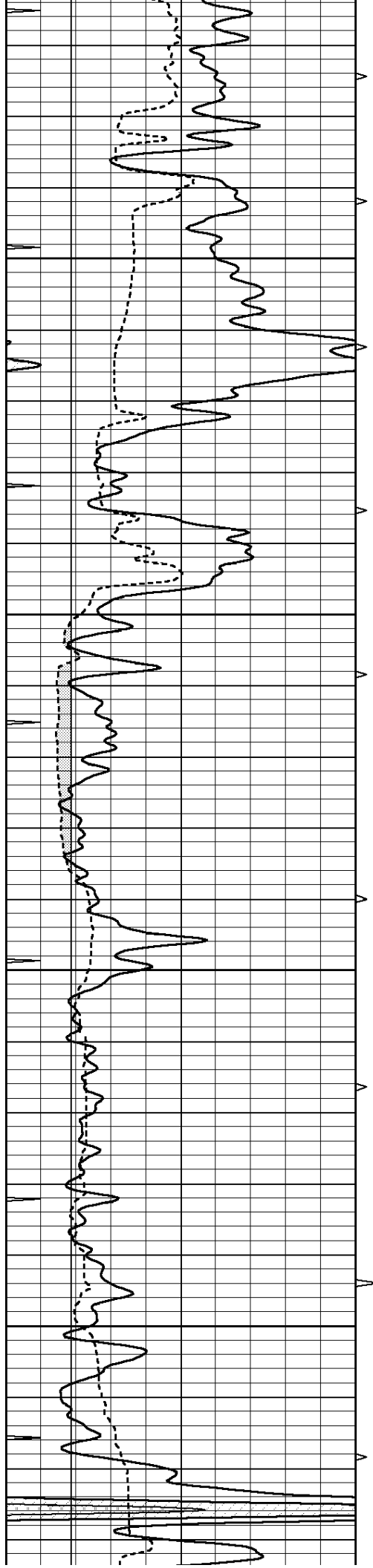
Database File: 005817pe.db
 Dataset Pathname: pass6.6
 Presentation Format: micro
 Dataset Creation: Wed Nov 24 12:13:27 2010
 Charted by: Depth in Feet scaled 1:240

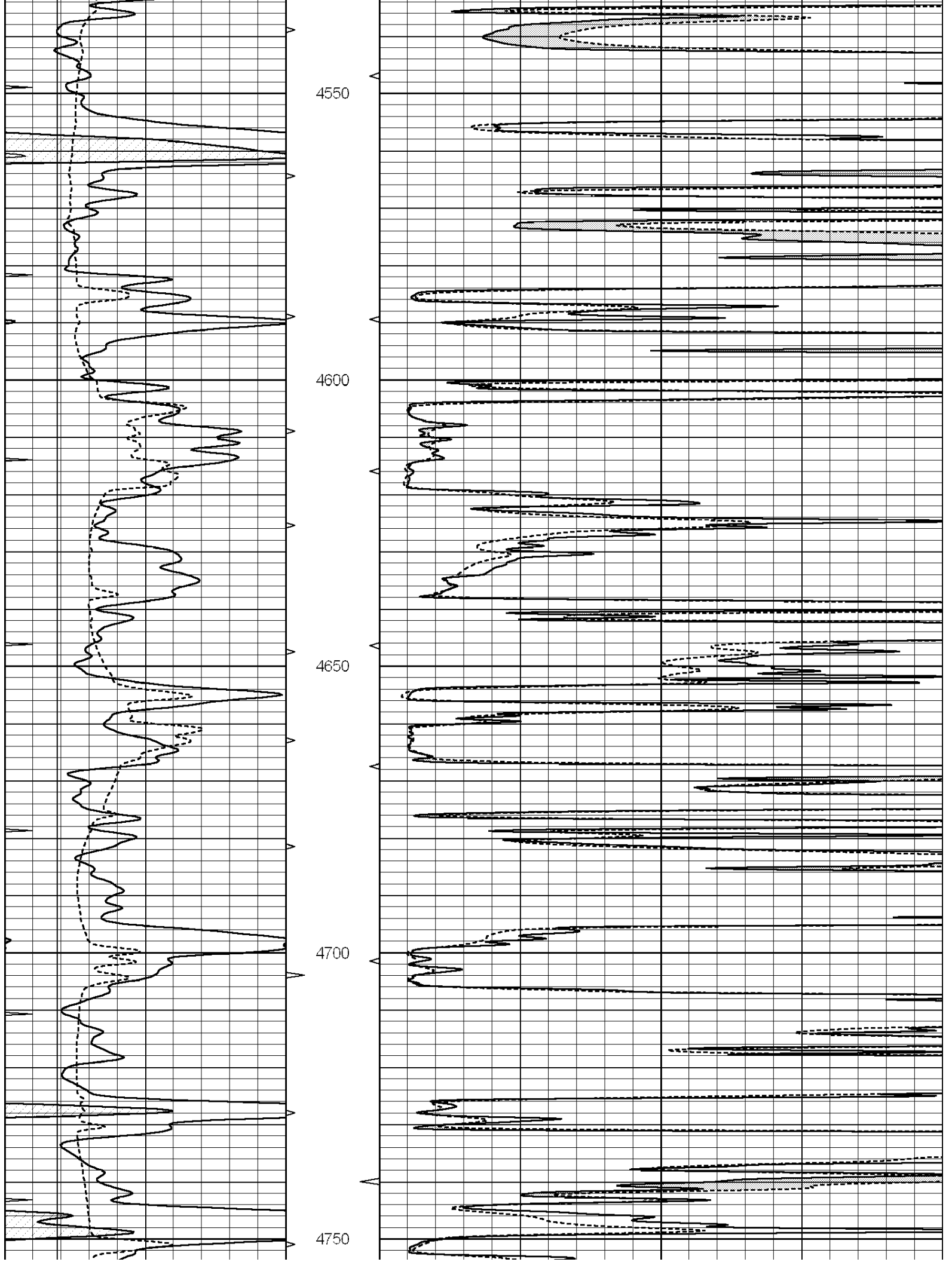
0	GAMMA RAY (GAPI)	150	ABHV	0	MEL1.5 (Ohm-m)	40
6	CALIPER (in)	16	10 (ft3)	0	MEL2.0 (Ohm-m)	40
0	MINMK	10	TBHV			
			0 (ft3)	10		

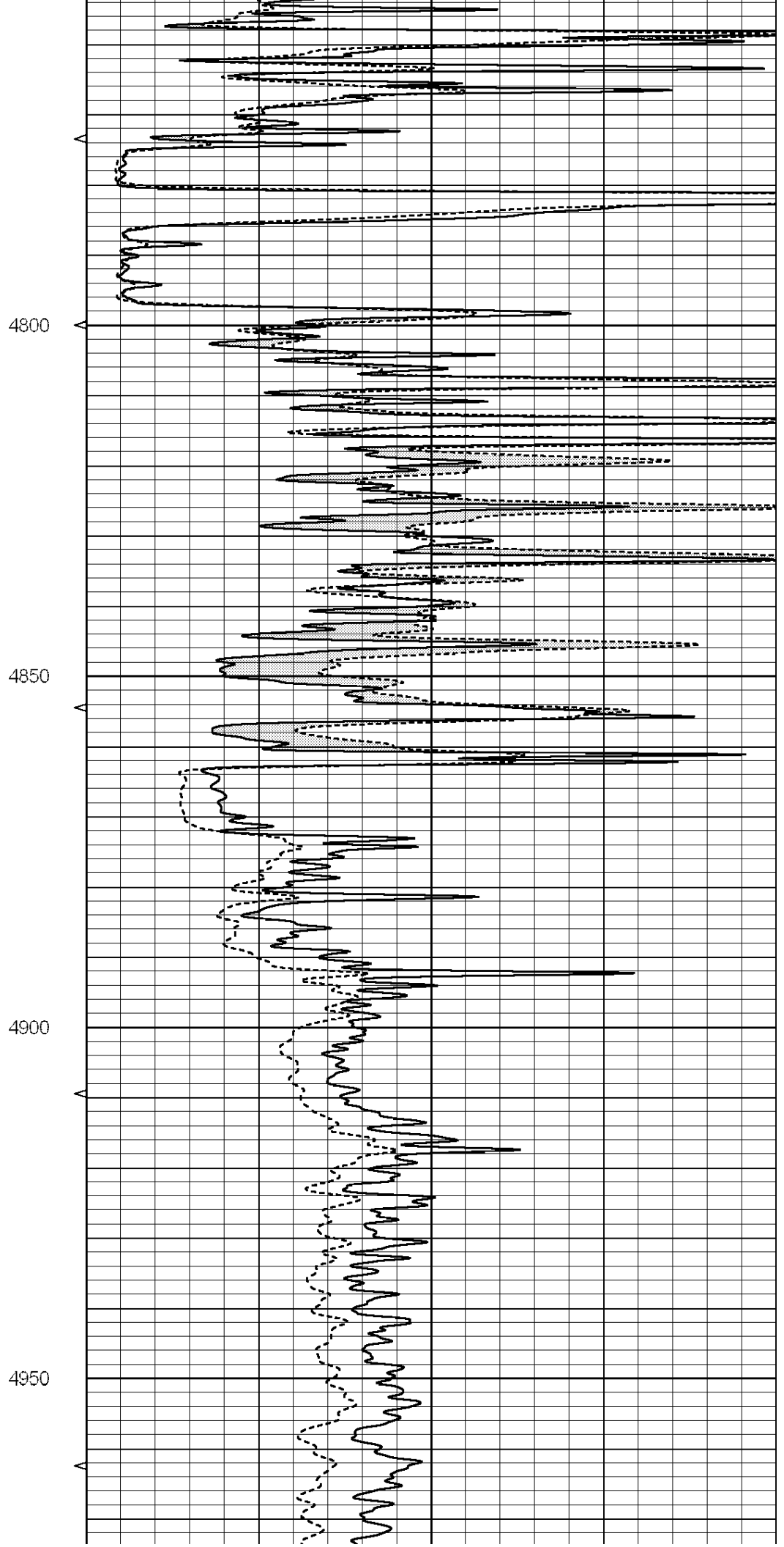
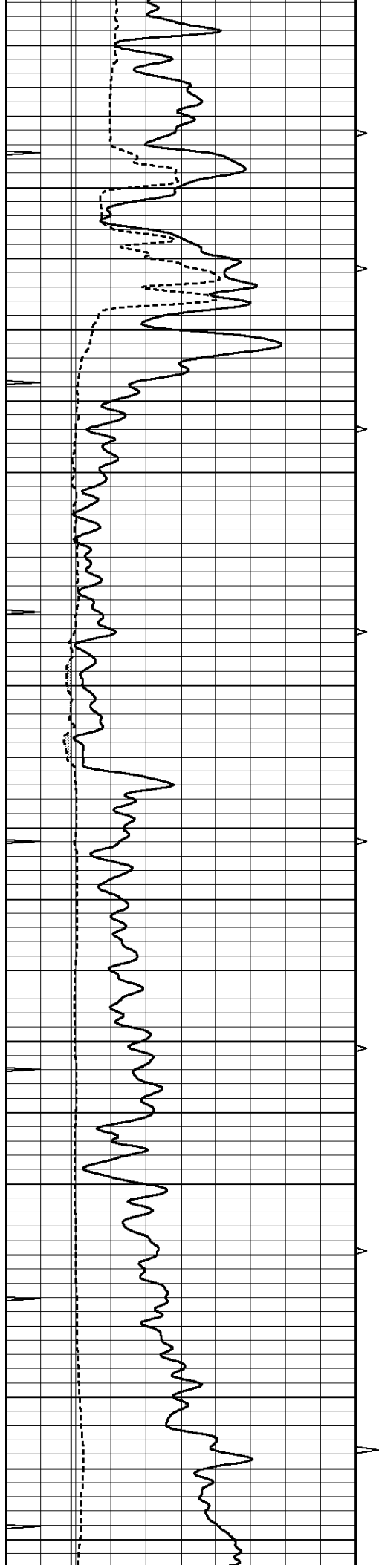


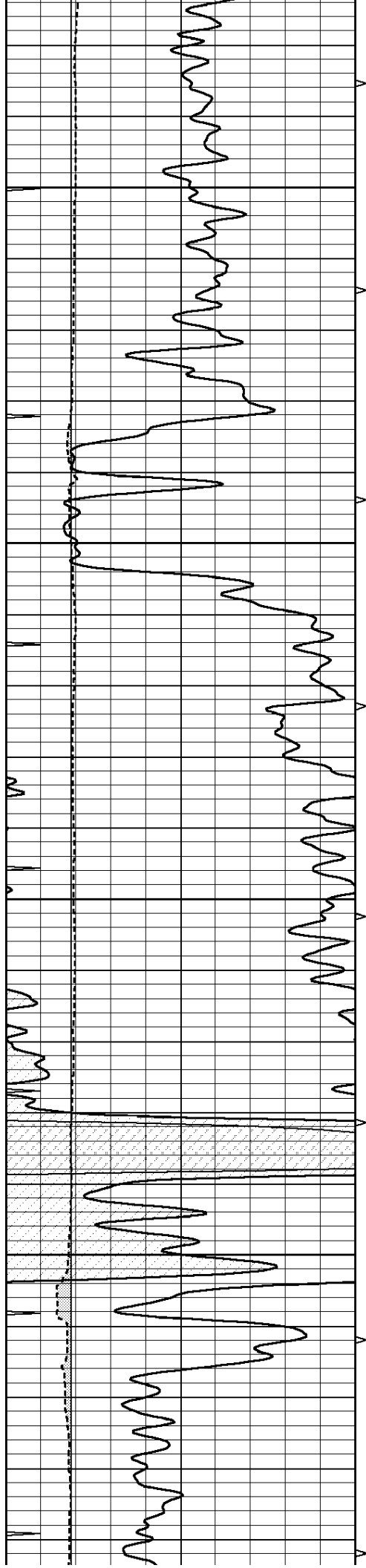












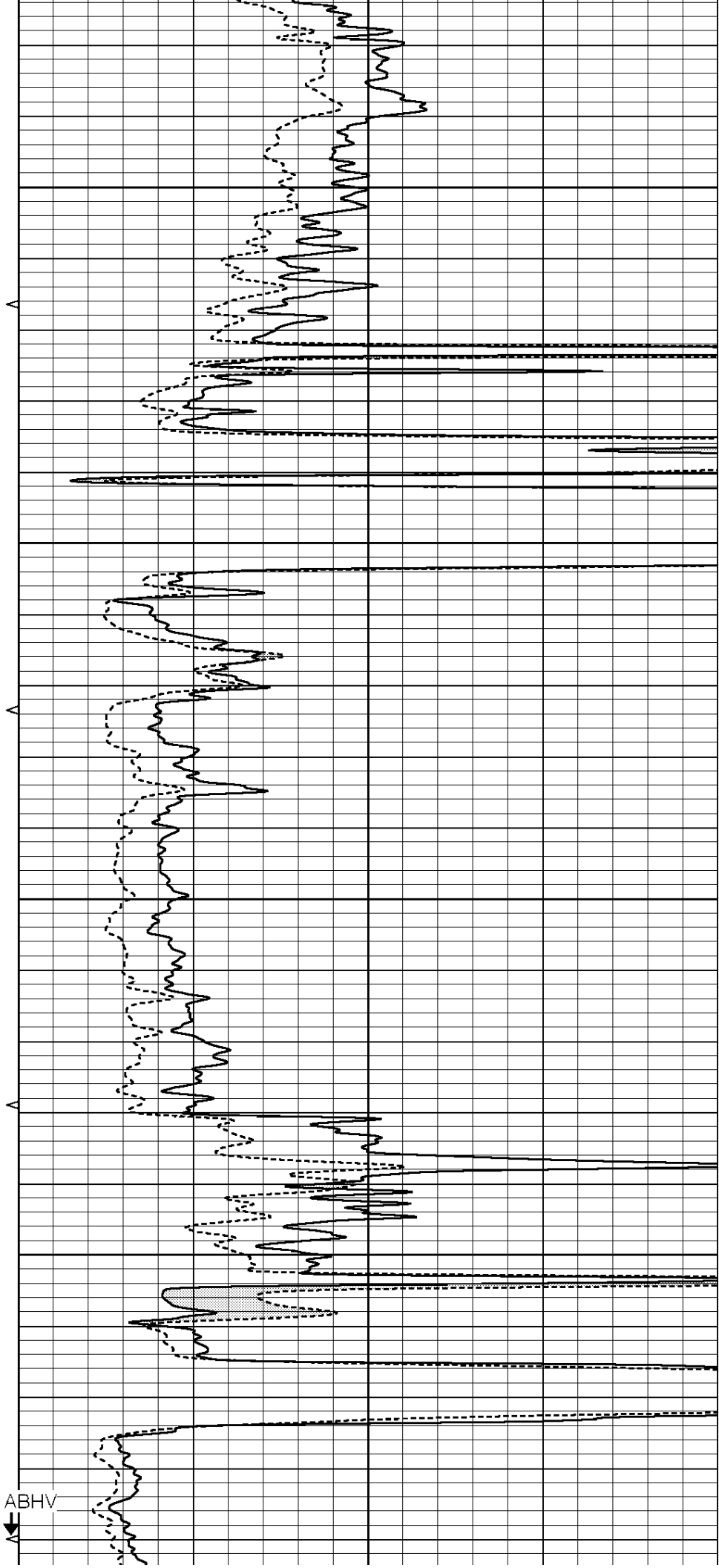
5000

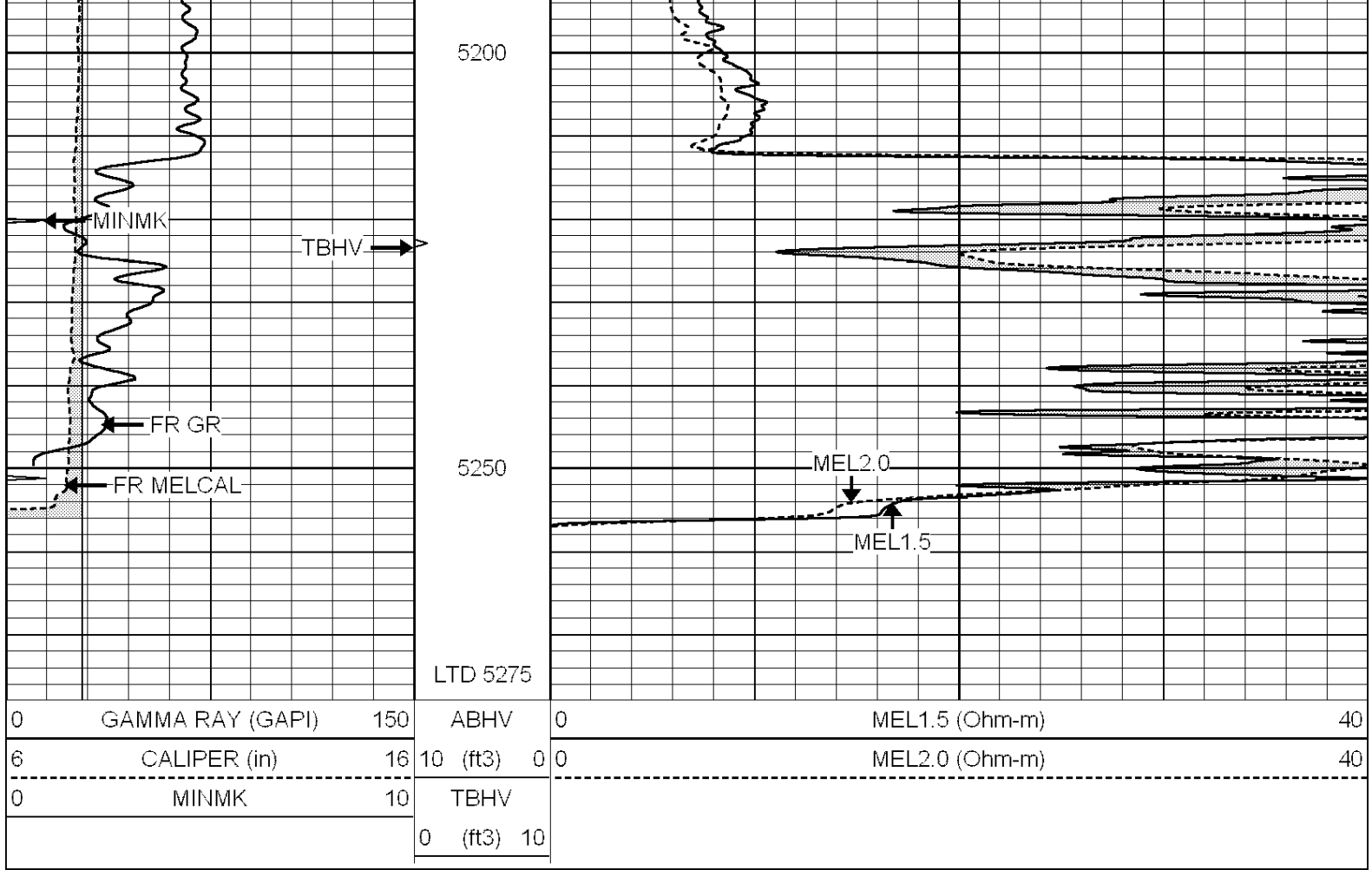
5050

5100

5150

5.5" ABHV



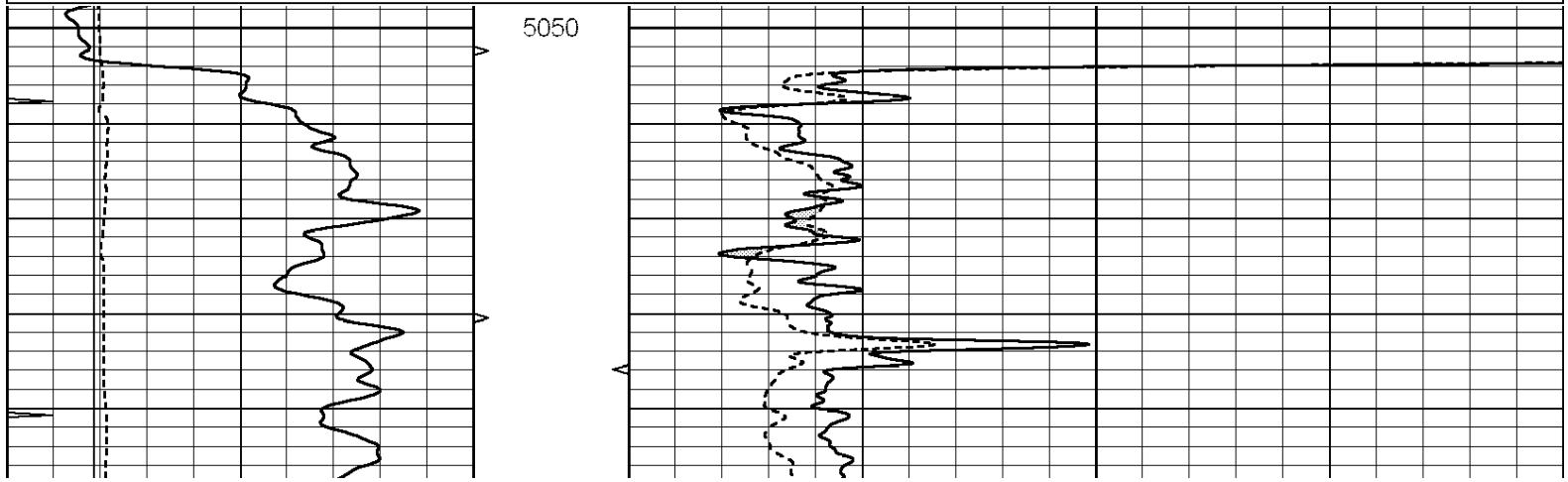


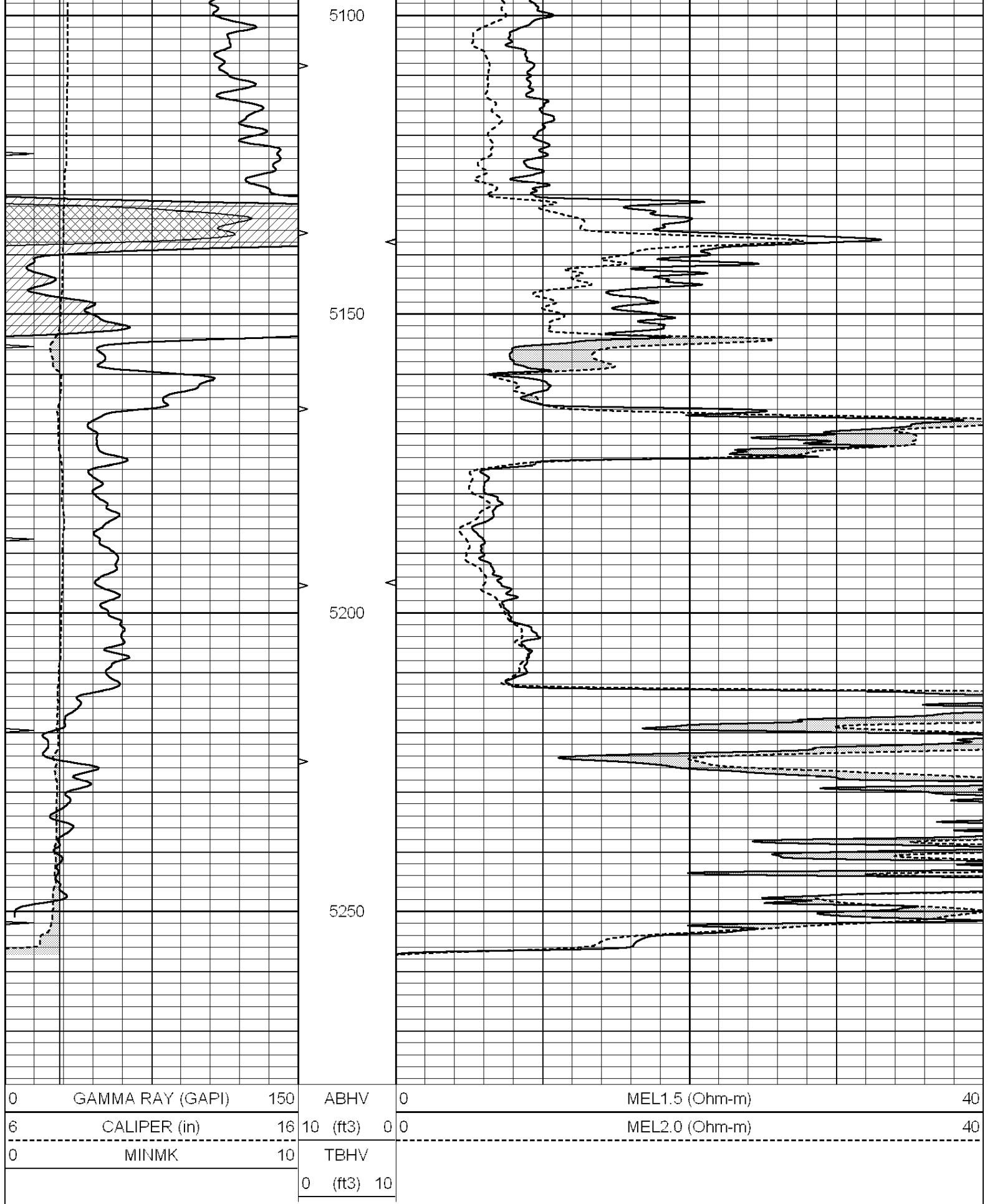
SUPERIOR
Hays,
Kansas

REPEAT SECTION

Database File: 005817pe.db
 Dataset Pathname: pass5.3
 Presentation Format: micro
 Dataset Creation: Wed Nov 24 11:10:57 2010 by Calc Open-Cased 090629
 Charted by: Depth in Feet scaled 1:240

0	GAMMA RAY (GAPI)	150	ABHV	0	MEL1.5 (Ohm-m)	40
6	CALIPER (in)	16	10 (ft3)	0	MEL2.0 (Ohm-m)	40
0	MINMK	10	TBHV			
			0 (ft3)	10		





Calibration Report

Database File: 005817pe.db
 Dataset Pathname: pass6.6
 Dataset Creation: Wed Nov 24 12:13:27 2010

MICRO Calibration Report

Serial Number:	MICRO5
Tool Model:	PROBE
Performed:	Wed Nov 24 11:24:17 2010

Caliper Calibration:	Gain=3.308	Offset=-2.353
----------------------	------------	---------------

	Low Cal	High Cal
References	5.700	13.000
Readings	2.435	4.641

1.5" Calibration:	Gain=33.000	Offset=0.000
-------------------	-------------	--------------

	Low Cal	High Cal
References	0.000	20.000
Readings	0.008	0.991

2" Calibration:	Gain=46.000	Offset=-0.800
-----------------	-------------	---------------

	Low Cal	High Cal
References	0.000	20.000
Readings	0.014	0.905

Gamma Ray Calibration Report

Serial Number:	GR4
Tool Model:	OPEN
Performed:	Wed Nov 24 11:01:13 2010

Calibrator Value:	200.0	GAPI
-------------------	-------	------

Background Reading:	0.0	cps
Calibrator Reading:	189.0	cps

Sensitivity:	2.1000	GAPI/cps
--------------	--------	----------