



SUPERIOR
Hays,
Kansas

SONIC
LOG

Company LOTUS OPERATING CO. LLC.
Well #2 KOPPITZ
Field STRANATHAN
County BARBER
State KANSAS

Company LOTUS OPERATING COMPANY, LLC.
Well #2 KOPPITZ
Field STRANATHAN
County BARBER State KANSAS

Location: API # : 15-007-23619-0000
2385' FNL & 360' FEL

SEC 2 TWP 35S RGE 12W

Permanent Datum GROUND LEVEL Elevation 1408
Log Measured From KELLY BUSHING 9' A.G.L.
Drilling Measured From KELLY BUSHING

Other Services
CDL/CNL/PE
DIL/MEL

Elevation
K.B. 1417
D.F. 1415
G.L. 1408

Date	11/24/10
Run Number	TWO
Depth Driller	5270
Depth Logger	5275
Bottom Logged Interval	5262
Top Log Interval	3700
Casing Driller	10 3/4" @ 283'
Casing Logger	283
Bit Size	7 7/8"
Type Fluid in Hole	CHEMICAL MUD
Density / Viscosity	9.6/44
pH / Fluid Loss	10.0/9.0
Source of Sample	FLOWLINE
Rim @ Meas. Temp	1.40 @ 64F
Rmf @ Meas. Temp	1.05 @ 64F
Rmc @ Meas. Temp	1.68 @ 64F
Source of Rmf / Rmc	MEASUREMENT
Rim @ BHT	706 @ 127F
Time Circulation Stopped	5.5 HOURS
Time Logger on Bottom	8:30 A.M.
Maximum Recorded Temperature	127F
Equipment Number	0836
Location	HAYS, KANSAS
Recorded By	JEFF LUEBBERS
Witnessed By	TIM HELLMAN

<<< Fold Here >>>

All interpretations are opinions based on inferences from electrical or other measurements and we cannot and do not guarantee the accuracy or correctness of any interpretation, and we shall not, except in the case of gross or willful negligence on our part, be liable or responsible for any loss, costs, damages, or expenses incurred or sustained by anyone resulting from any interpretation made by any of our officers, agents or employees. These interpretations are also subject to our general terms and conditions set out in our current Price Schedule.

Comments

THANK YOU FOR USING SUPERIOR WELL SERVICE HAYS, KANSAS (785) 628-6395
DIRECTIONS
MEDICINE LODGE, KS. (HWY 160 & 281 JUNCTION) 17S. ON HWY 281 TO MM #7, 1W. ON "DRIFTWOOD RD." TO "T", 1/2S., W. INTO

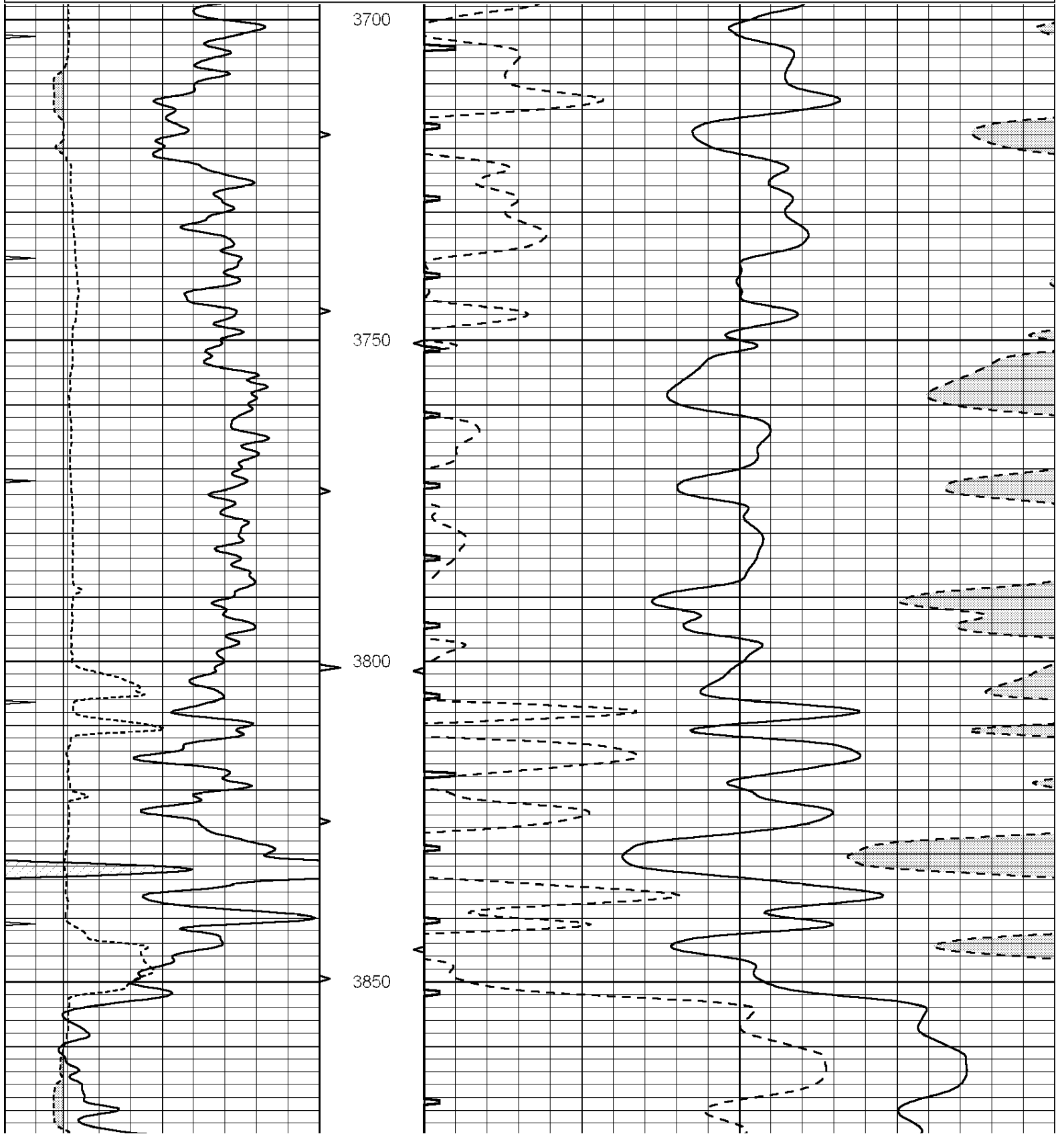


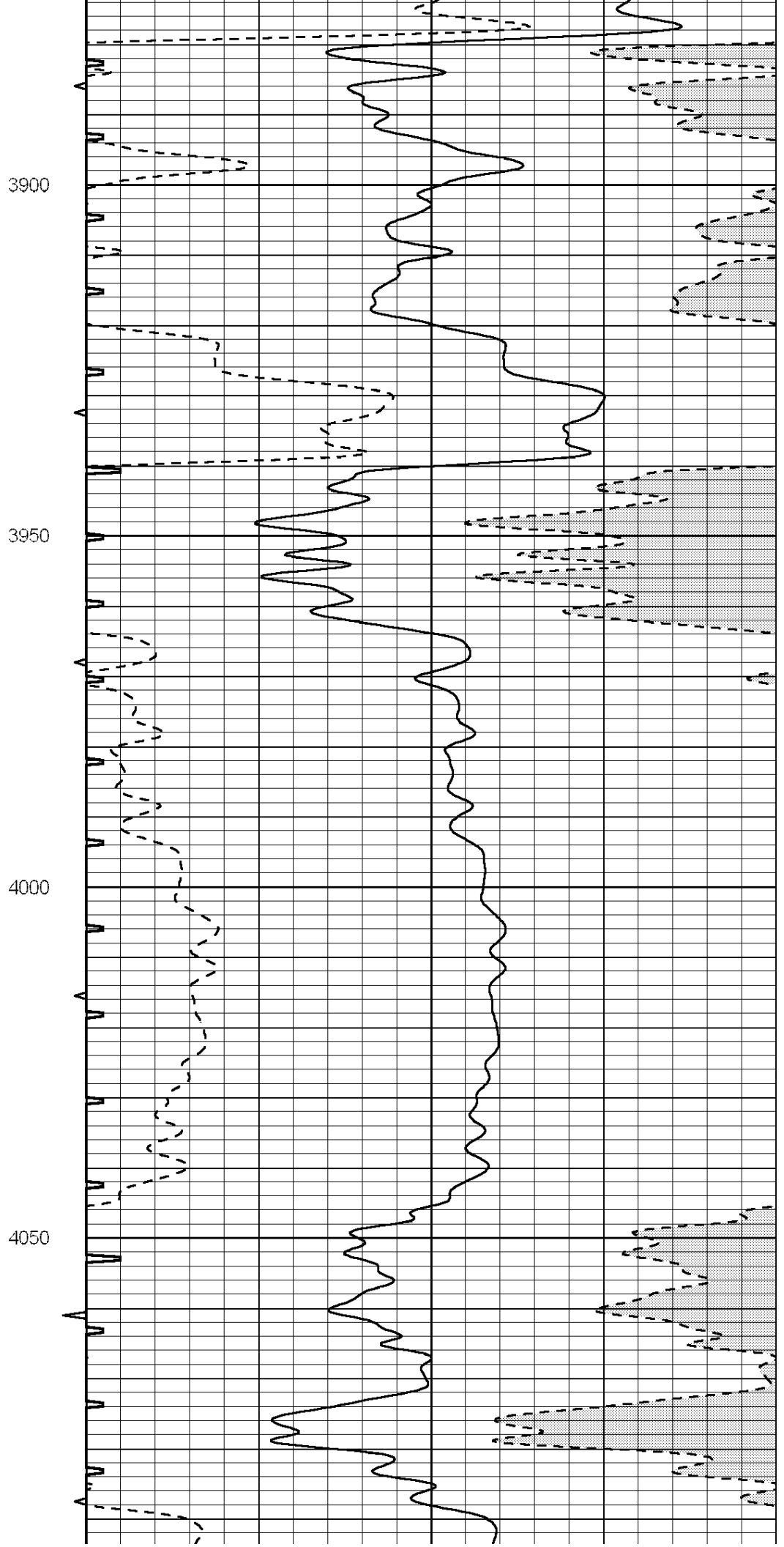
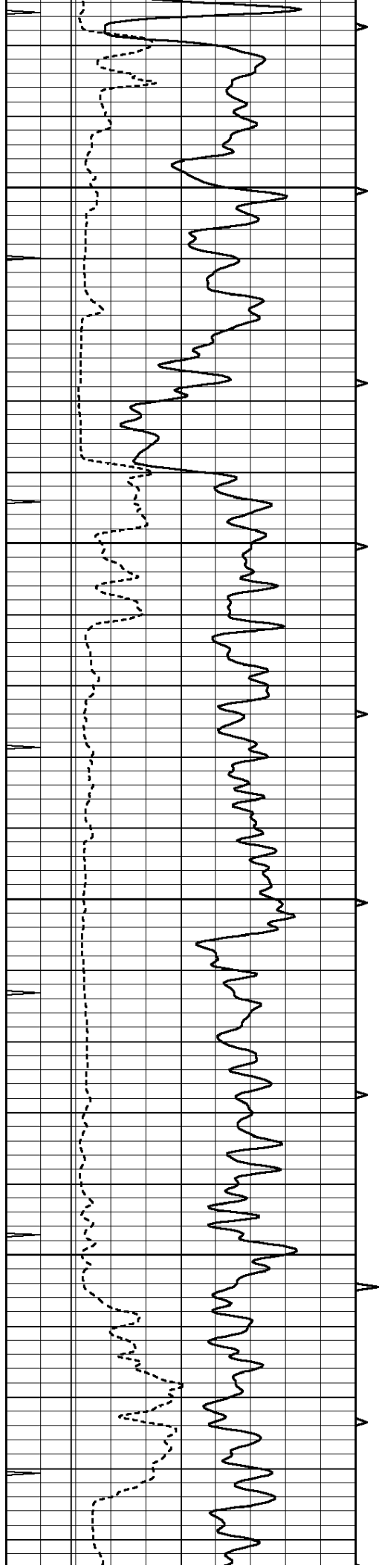
SUPERIOR
Hays,
Kansas

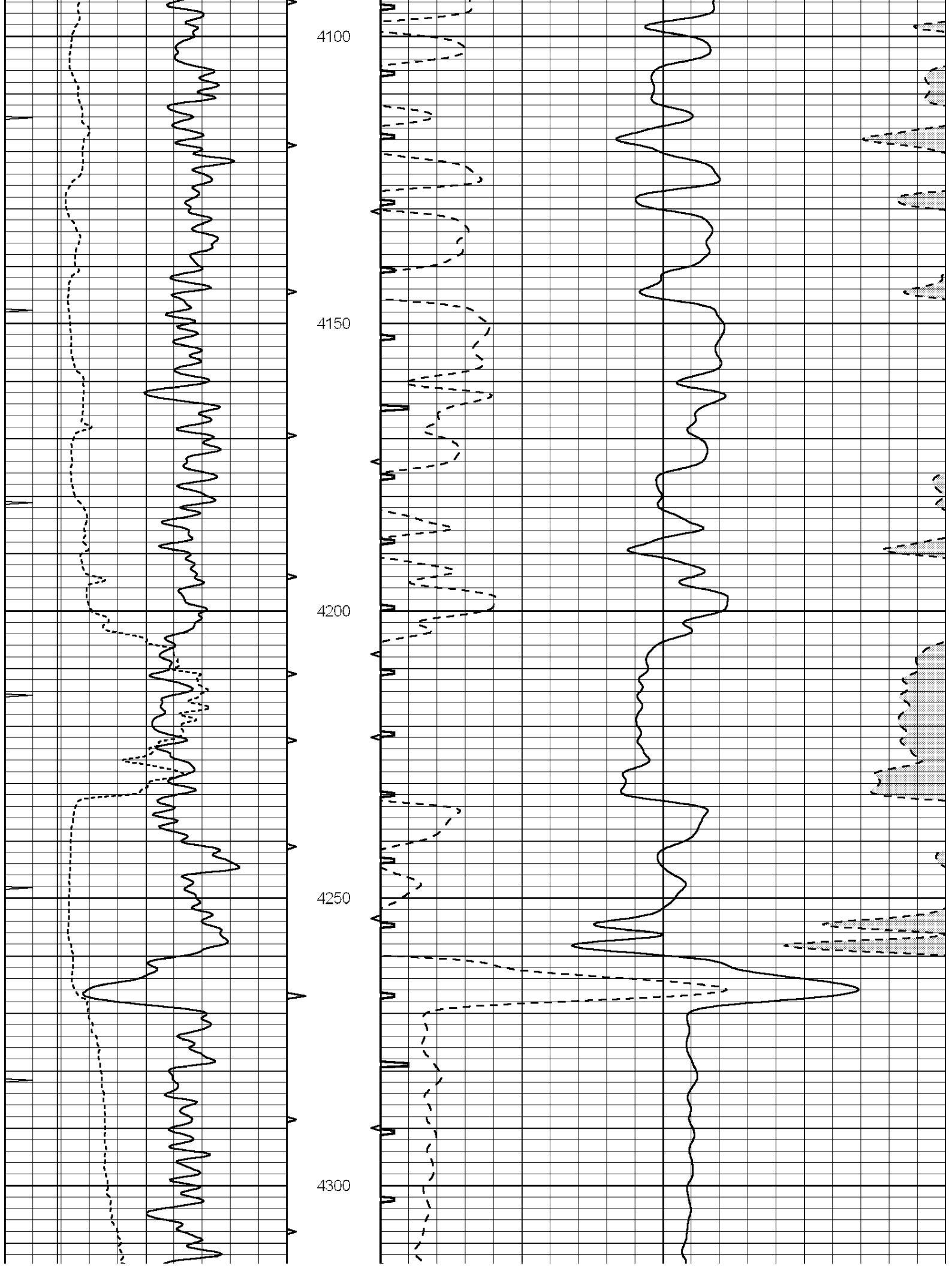
MAIN SECTION

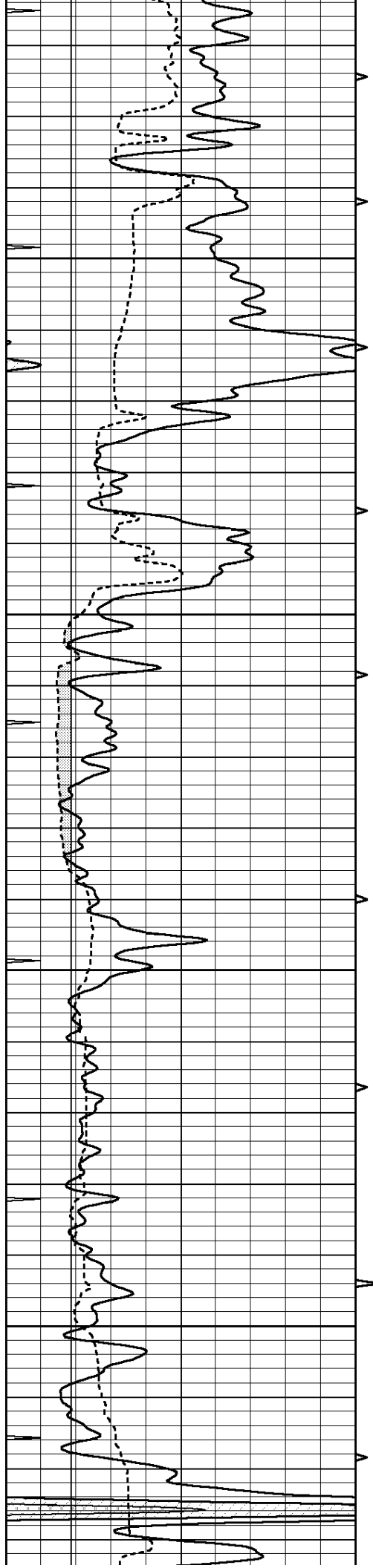
Database File: 005817pe.db
 Dataset Pathname: pass6.6
 Presentation Format: slt
 Dataset Creation: Wed Nov 24 12:13:27 2010
 Charted by: Depth in Feet scaled 1:240

0	GAMMA RAY (GAPI)	150	ABHV	140	DELTA TIME (usec/ft)	40	
6	CALIPER (in)	16	10 (ft3)	0	30	SONIC POROSITY (pu)	-10
0	MINMK	10	TBHV	0	ITT (msec)	20	
			0 (ft3)	10			







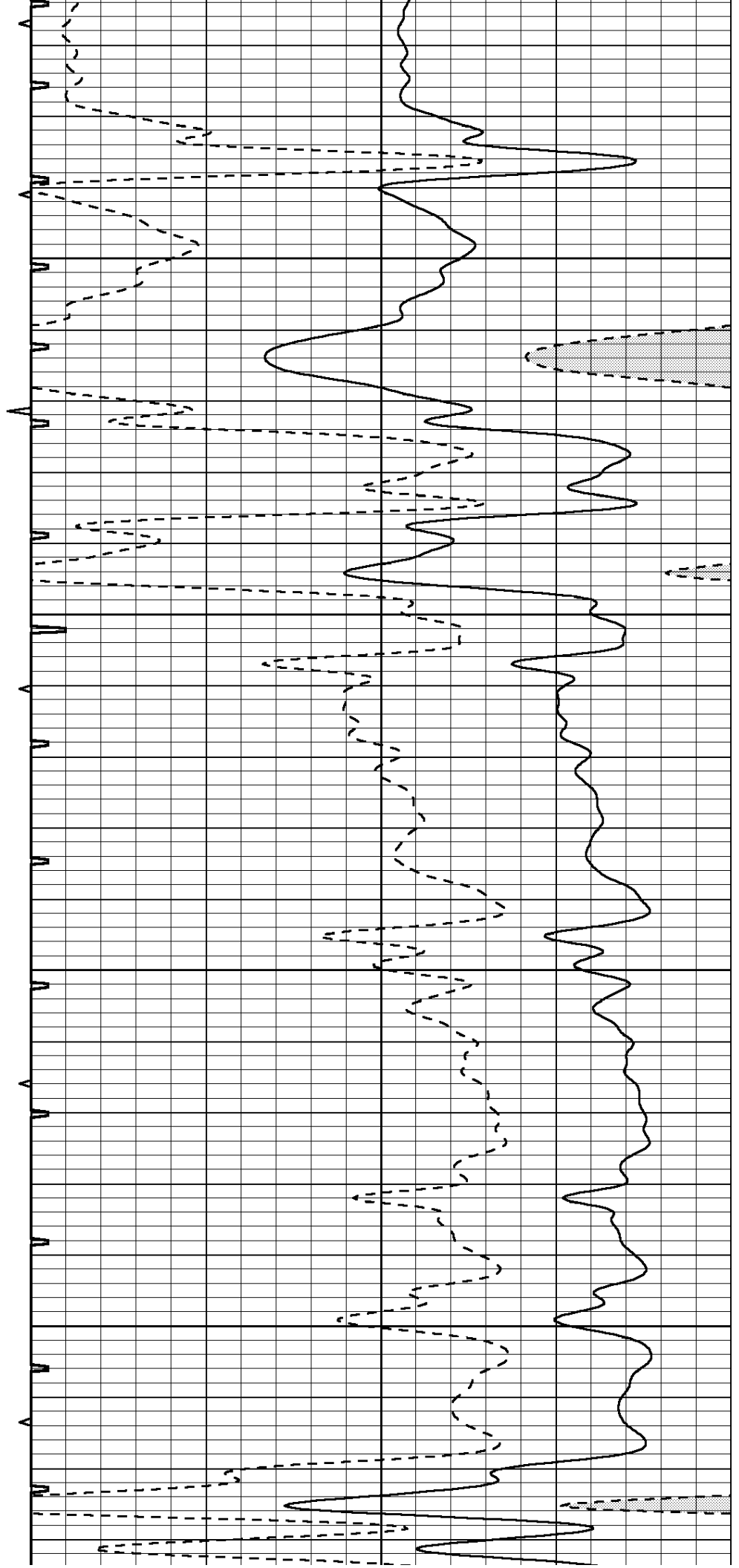


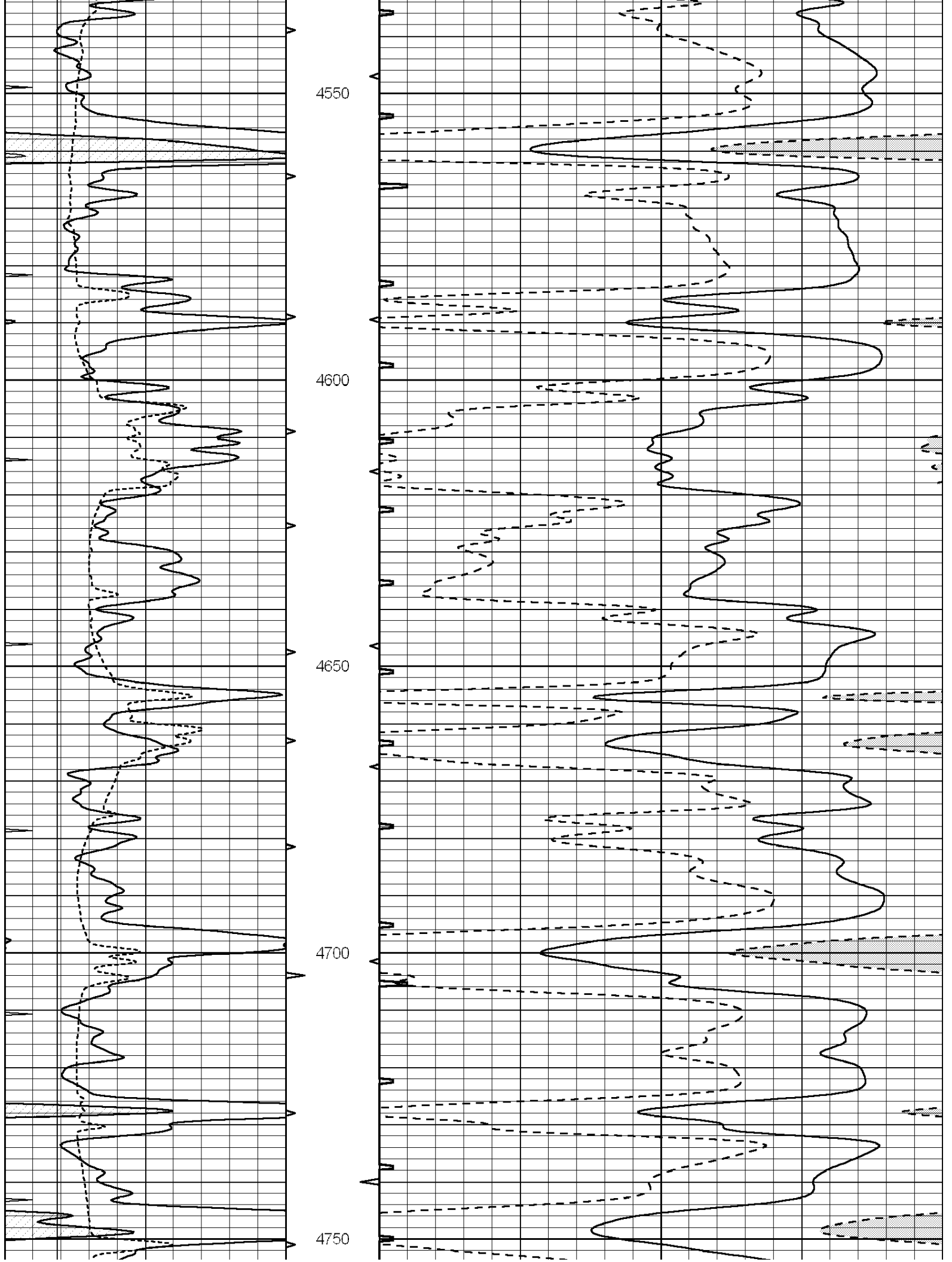
4350

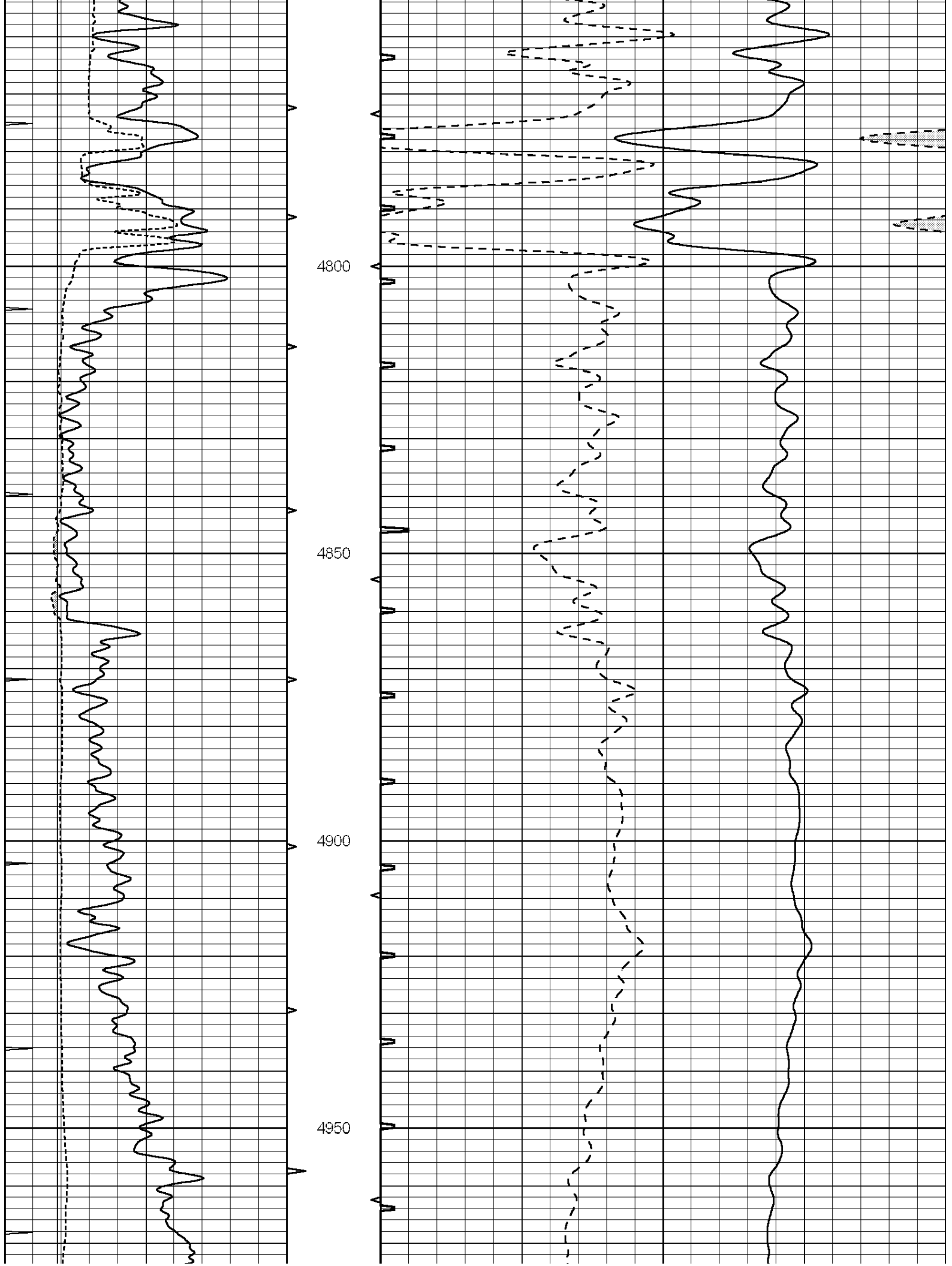
4400

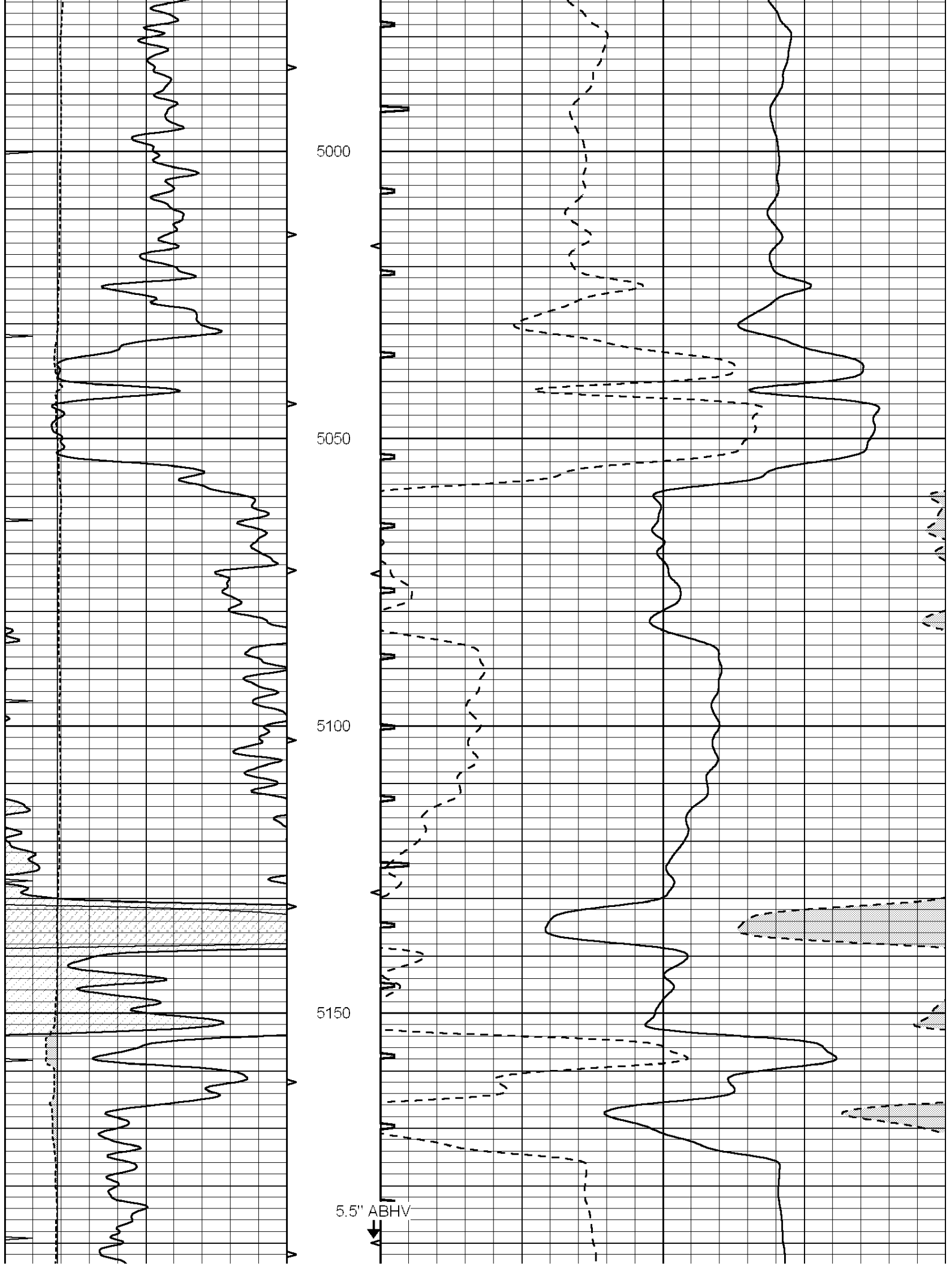
4450

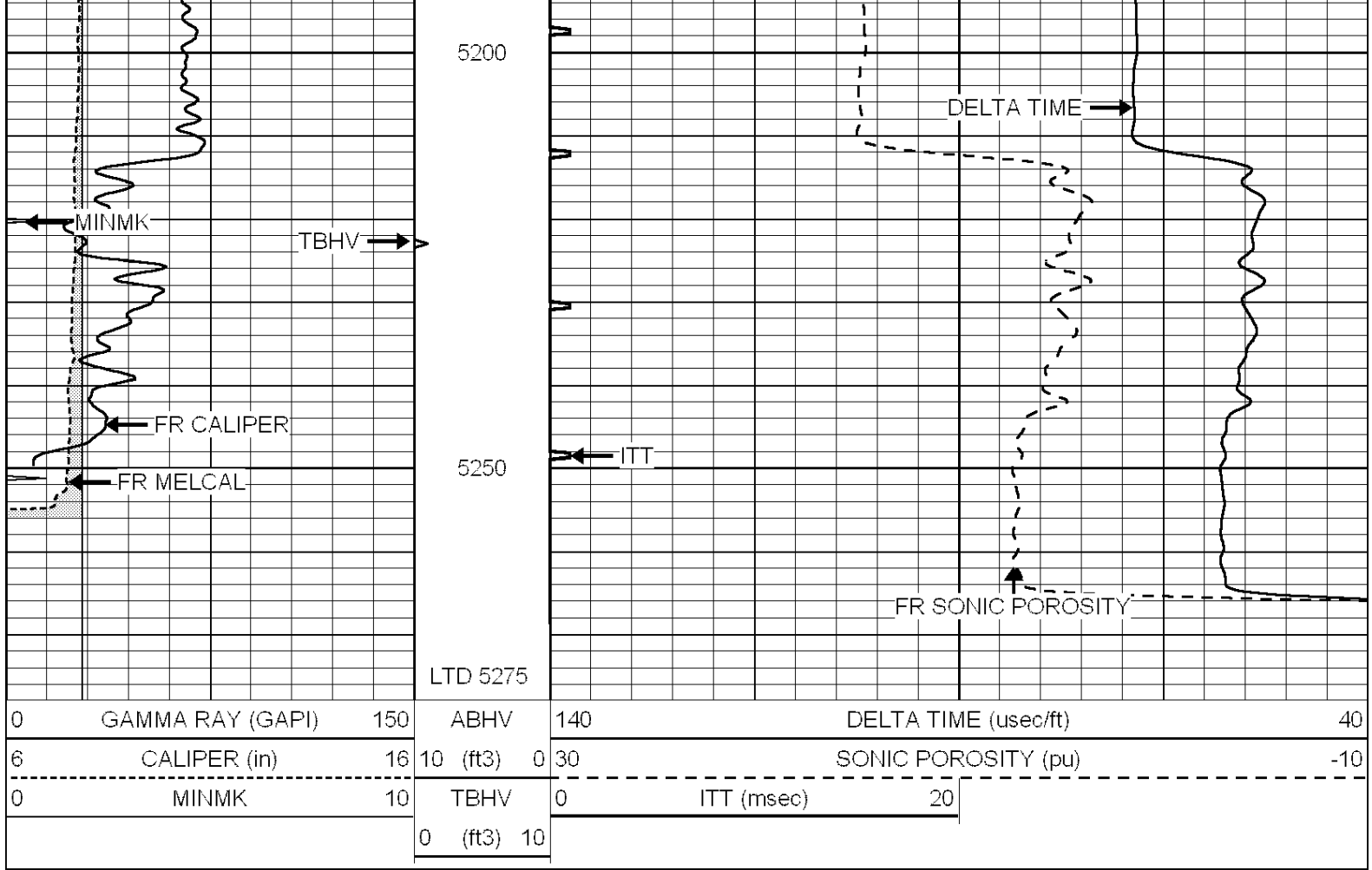
4500









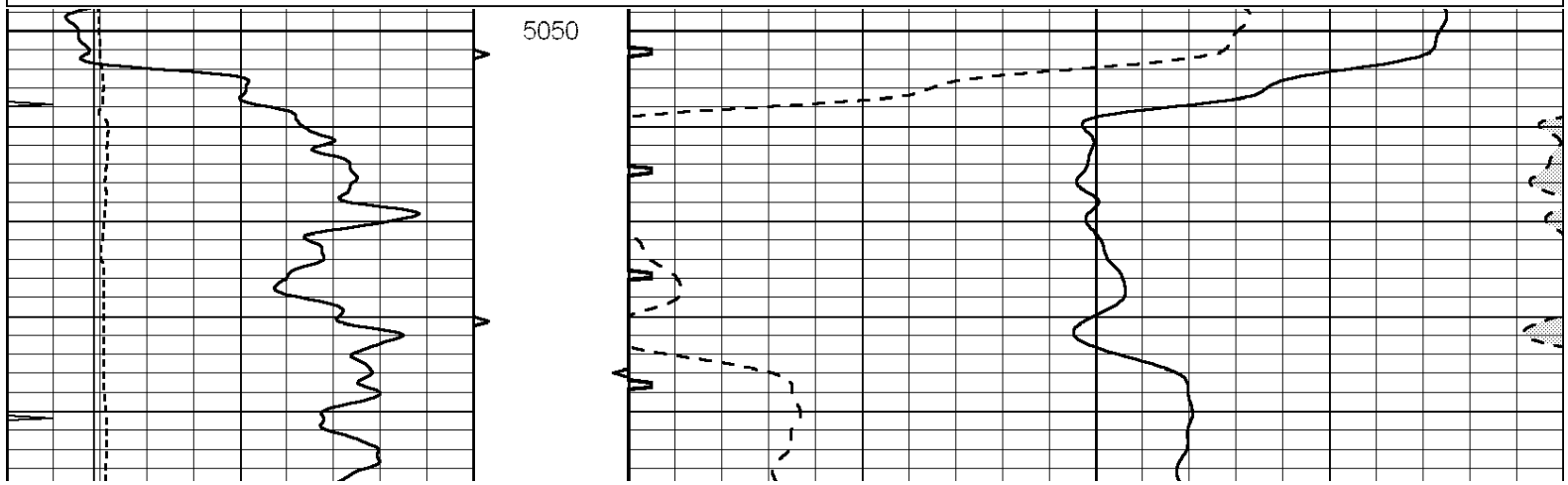


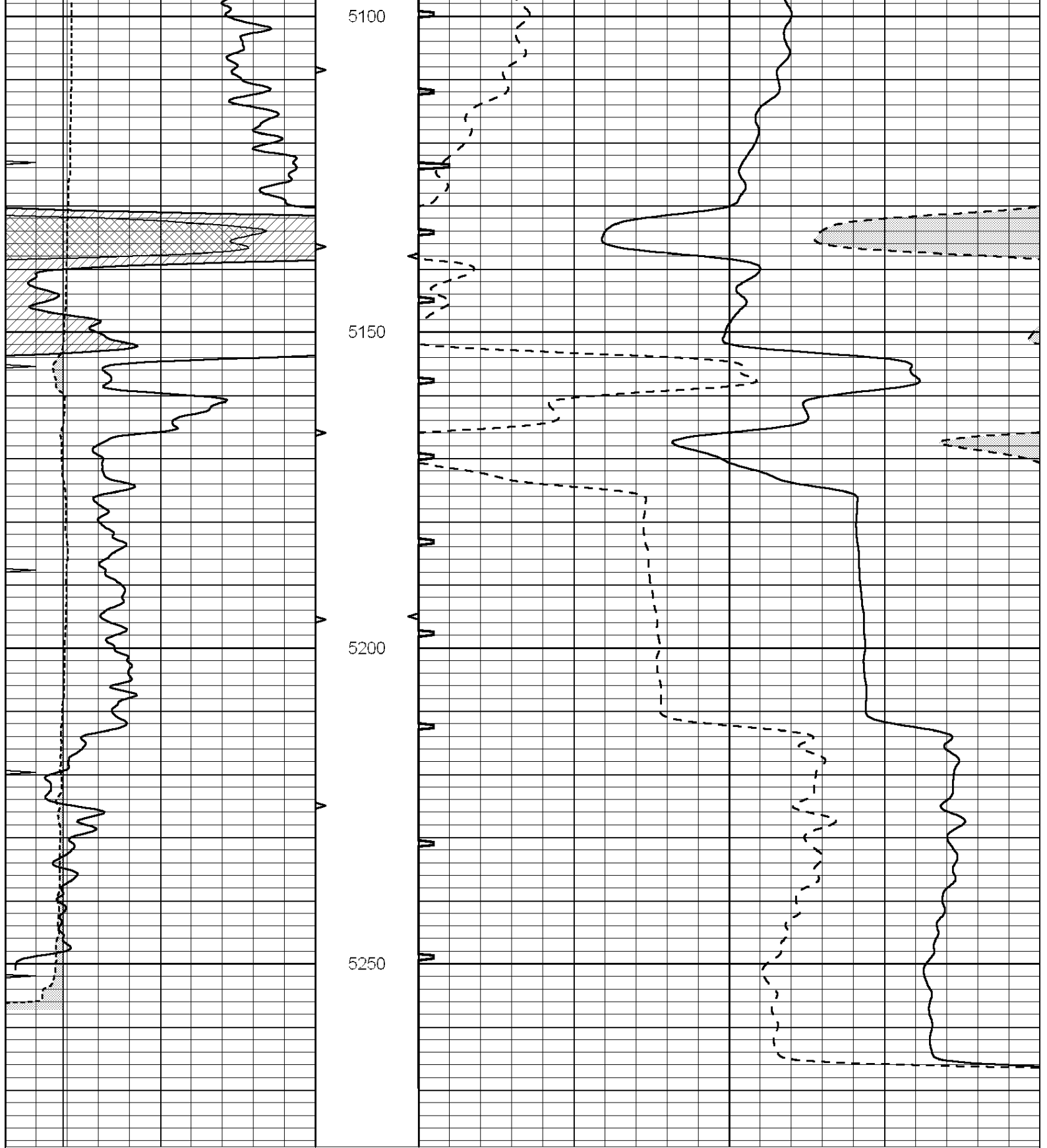
SUPERIOR
Hays,
Kansas

REPEAT SECTION

Database File: 005817pe.db
 Dataset Pathname: pass5.3
 Presentation Format: slt
 Dataset Creation: Wed Nov 24 11:10:57 2010 by Calc Open-Cased 090629
 Charted by: Depth in Feet scaled 1:240

0	GAMMA RAY (GAPI)	150	ABHV	140	DELTA TIME (usec/ft)	40
6	CALIPER (in)	16	10 (ft3) 0	30	SONIC POROSITY (pu)	-10
0	MINMK	10	TBHV	0	ITT (msec)	20
			0 (ft3) 10			





0	GAMMA RAY (GAPI)	150	ABHV	140	DELTA TIME (usec/ft)	40
6	CALIPER (in)	16	10 (ft3)	0 30	SONIC POROSITY (pu)	-10
0	MINMK	10	TBHV	0	ITT (msec)	20
			0 (ft3)	10		